



Gateshead Public Libraries

**REFERENCE DEPARTMENT**

Accession No. 58262...Class No. L:906

---



Subscription



THE PUBLICATIONS OF THE  
SOCIETY OF ANTIQUARIES  
OF NEWCASTLE UPON TYNE



THE PUBLICATIONS OF THE  
SOCIETY OF ANTIQUARIES  
OF NEWCASTLE UPON TYNE

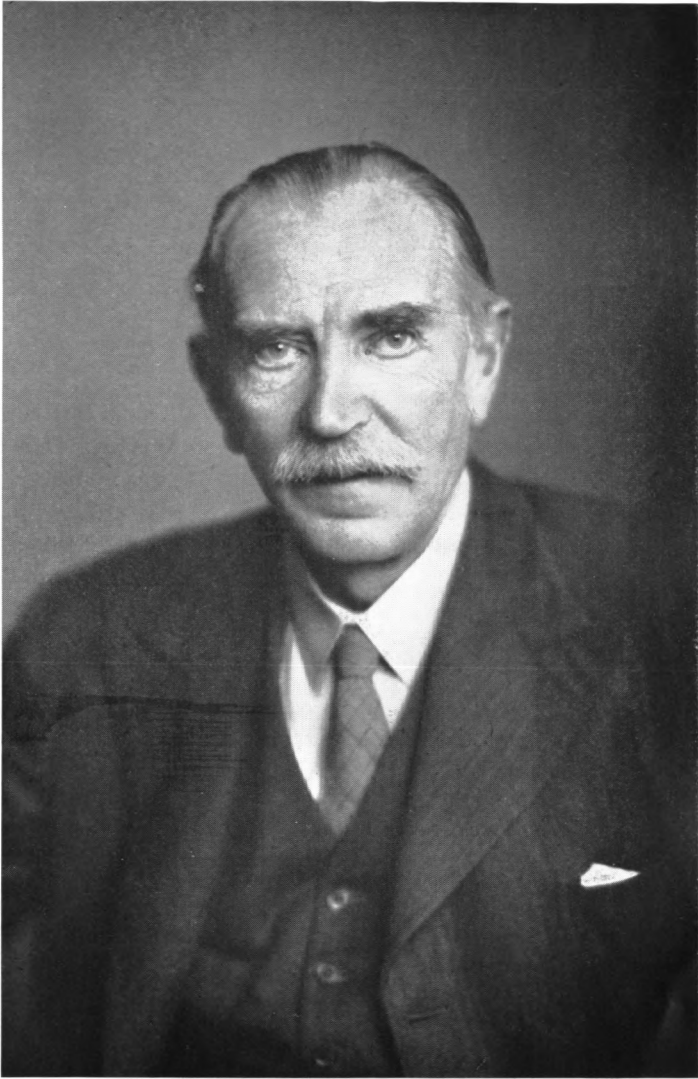


FOURTH SERIES, VOL. XXXVII  
FOR THE YEAR 1959









SIR EDMUND CRASTER.

[See p. 355.]

# ARCHAEOLOGIA AELIANA

*OR*

MISCELLANEOUS TRACTS  
RELATING TO ANTIQUITY

EDITED BY  
C. H. HUNTER BLAIR

PRINTED AND PUBLISHED FOR  
THE SOCIETY OF ANTIQUARIES  
OF NEWCASTLE UPON TYNE  
BY NORTHUMBERLAND PRESS LIMITED  
MCMLIX

GATESHEAD PUBLIC LIBRARIES	
CLASS NO.	BOOK NO.
STORE ROOM	58262
CHECKED	DATE
EMMS	15-12-59

NORTHUMBERLAND PRESS LIMITED, PRINTERS AND PUBLISHERS  
SUTHERLAND HOUSE, SOUTH SHORE ROAD  
GATESHEAD

## CONTENTS

	PAGE
List of plates . . . . .	ix
List of text illustrations . . . . .	x
Thanks for gifts . . . . .	xii
Council and officers for 1959 . . . . .	xiii
Officers of the Society from 1813 . . . . .	xiv
Editorial note . . . . .	xvi
I.—Excavations at <i>Corstopitum</i> , 1906-58. By Eric Birley	1
II.—Roman glass in Northern Britain. By Dorothy Charlesworth . . . . .	33
III.—Second-century defences at Corbridge. By J. P. Gillam and I. A. Richmond . . . . .	59
IV.—The Roman bath house at Red House, Corbridge. By C. M. Daniels . . . . .	85
V.—The defences of the Roman fort at Halton Chesters. By Michael G. Jarrett . . . . .	177
VI.—Excavations at Whitley Castle, Northumberland, 1957-58. By Noel Shaw . . . . .	191
VII.—A Palmyrene sculptor at South Shields? By David Smith . . . . .	203
VIII.—Excavation at Longbyre, Haltwhistle. By P. Salway . . . . .	211
IX.—Excavations at the native settlement at Huckhoe, Northumberland. By George Jobey . . . . .	217
X.—Pre-Conquest sculptures and the common seal of Hartlepool. By Forrest S. Scott . . . . .	279
XI.—Seals of Richard Barnes, bishop of Durham 1577-87. By C. H. Hunter Blair . . . . .	289
XII.—The origin of the families of Heron and Swinburne. By W. Percy Hedley . . . . .	291
XIII.—The life and death of John of Denton. By Constance M. Fraser . . . . .	303

	PAGE
XIV.—Records of the Bakers and Brewers of Newcastle upon Tyne at the Black Gate. By Elizabeth M. Halcrow . . . . .	327
XV.—Sixteenth-century heraldic glass at Earsdon, Northumberland. By L. C. Evetts . . . . .	333
XVI.—Models of Hadrian's Wall and its component works. By David Smith . . . . .	339

## REVIEWS.

1.— <i>Roman and native in North Britain</i> . Edited by I. A. Richmond. Review by Sir Edmund Craster . . . . .	343
2.— <i>Dunstaffnage Castle and the Stone of Destiny</i> . By W. Douglas Simpson. Review by W. Ryle Elliot . . . . .	345

## NOTES.

1.—A polished stone axe from Haydon Bridge. By George Jobey . . . . .	347
2.—Use of crane in distillation. By John Philipson . . . . .	348
3.—Excavations at High Brunton, 1957. By Michael G. Jarrett . . . . .	349
4.—A medieval coin from Heddon-on-the-Wall. By Michael G. Jarrett . . . . .	350
5.—Two Roman coins from Sunderland. By Michael G. Jarrett . . . . .	351
6.—A lead seal of Carnaby. By C. H. Hunter Blair . . . . .	351
7.—Town Moor money. By R. F. Walker . . . . .	352

## MEMOIR.

Sir Edmund Craster. By I. A. Richmond . . . . .	355
(see frontispiece of volume)	
Publications of the Society . . . . .	359
Index . . . . .	363

## PLATES AND PLANS

	Frontispiece
Sir Edmund Craster	<i>Facing page</i>
I-V.—Roman glass	58
VI.—Plan of bath house	85
VII-XXIII.—Bath house at Red House	176
XXIV-VI.—Halton Chesters	188
XXVII-XXX.—Whitley Castle	198
XXXI-IV.—Palmyrene sculptures	210
XXXV.—	
XXXVI-VIII.—Huckhoe	254
XXXIX-XLI.—Pre-Conquest sculptures	286
XLII.—Seals of bishop Barnes	290
XLIII.—	
XLIV.—Heraldic glass	338
XLV.—Robert Spence	339
XLVI-L.—Models of Hadrian's Wall	340
LI.—Crane for distillation	348

### FOLDING PLANS.

	<i>Facing page</i>
Sections, fig. 3	94
Elevations or sections, fig. 6	102
Plan bath house, fig. 24	154
Section Halton Chesters, fig. 5	189
Section Whitley Castle, fig. 2	196
Section Huckhoe, fig. 4	228

## ILLUSTRATIONS IN THE TEXT

	PAGE
Corbridge Roman station . . . . .	13
Figured samian ware . . . . .	23
Jugs or flagons . . . . .	25
Miscellaneous vessels . . . . .	27
Special cooking-pots . . . . .	29
Portion of face-jar . . . . .	31
Map— <i>millefiori</i> glass . . . . .	35
Map—plates . . . . .	37
Plates and facet-cut vessels . . . . .	39
Map—facet-cut beakers . . . . .	41
Map—bowls with painted scenes, etc. . . . .	43
Map—bowls with painted fish . . . . .	45
Plain and cut vessels . . . . .	47
Bowl, jars and flagons . . . . .	51
Bases of bottles . . . . .	53
Bottles and flasks, etc. . . . .	55
Map—Roman glass on native sites . . . . .	57
Corbridge 1955 . . . . .	61
Corbridge 1955—section north of site XI . . . . .	65
Corbridge—west gate . . . . .	79
Corbridge 1953—Antonine west gate . . . . .	81
Site of bath house . . . . .	87
Plan of bath house . . . . .	90
Bath house, plans . . . . .	97
Plan of stone . . . . .	99
Section of bath house courtyard . . . . .	107
Floor of <i>Frigidarium</i> , bath house . . . . .	113
Section of basin or pedestal, bath house . . . . .	116
<i>Laconicum</i> stokehole . . . . .	120
<i>Caldarium</i> and <i>tepidarium</i> floors . . . . .	123



	PAGE
<i>Tepidarium</i> , stokehole . . . . .	127
Buttresses, etc., of apse . . . . .	128
Chimney flue . . . . .	129
Periods of main stokehole . . . . .	135
Section of stokehole . . . . .	136
Yard plans . . . . .	143
Groups of holes dug . . . . .	148
Trench C . . . . .	149
Samian pieces . . . . .	159
Coarse pottery . . . . .	162
Glass objects . . . . .	165
Tile marks . . . . .	171
Plan Halton . . . . .	179
Sections or plans Halton . . . . .	180-186
Plan Whitley Castle . . . . .	193
Pottery sections . . . . .	201-202
Wall Longbyre . . . . .	214
Section Longbyre . . . . .	215
Map Wansbeck Valley . . . . .	218
Plan Huckhoe . . . . .	221
Huckhoe area . . . . .	223
Huckhoe buildings . . . . .	235
Huckhoe . . . . .	237
Circular hut . . . . .	239
Huckhoe huts . . . . .	241
Hut . . . . .	243
Huckhoe area 3 . . . . .	249
Small finds . . . . .	255
Bowl . . . . .	262
Pottery . . . . .	265
Querns . . . . .	271
Flints . . . . .	277
Sculptured stones . . . . .	281
Distribution map . . . . .	283
Carved stone . . . . .	285
Stone axe . . . . .	348

The thanks of the Society are given to:—

THE UNIVERSITY OF DURHAM EXCAVATION COMMITTEE who, as administrator of grants from the Sir James Knott Trustees and the Pilgrim Trust, have paid, from these grants, the cost of all the half-tone blocks and line-blocks used to illustrate papers IV, Bath House at Red House; V, Halton Chesters; VI, Whitley Castle and IX, Huckhoe. Without this substantial help these papers could not have been illustrated so lavishly, nor could the bath house excavations have been done so completely.

THE COUNCIL FOR BRITISH ARCHAEOLOGY for a generous grant of £40 towards the cost of printing paper II, Roman Glass, and of £100 towards that of paper IV, Bath House.

THE MUSEUM OF ANTIQUITIES OF THE UNIVERSITY OF DURHAM and of the SOCIETY OF ANTIQUARIES OF NEWCASTLE UPON TYNE (per Dr. D. Smith) for paying the cost of the blocks used in illustrating papers VII, Palmyrene Sculptor, and XVI, Models of Hadrian's Wall.

MISS DOROTHY CHARLESWORTH for the drawings and photographs used in paper II.

MR. C. M. DANIELS and MR. R. WALLIS for photographs and plans for paper IV.

MR. M. G. JARRETT for the plans for paper V.

MR. NOEL SHAW for plans and photographs for paper VI.

MR. GEO. JOBEY for the drawings and photographs for paper IX.

MR. F. S. SCOTT for the drawings and photographs for paper X.

MR. L. C. EVETTS for the photographs of heraldic glass for paper XV.

THE COUNCIL AND OFFICERS OF THE  
SOCIETY OF ANTIQUARIES OF NEWCASTLE UPON TYNE  
FOR THE YEAR MCMLIX

PROF. ERIC BIRLEY, M.B.E., M.A., F.S.A., PRESIDENT.

CHARLES HENRY HUNTER BLAIR, M.A., D.LITT., F.S.A.  
SIR WILLIAM W. GIBSON, B.A., LL.M., D.C.L., F.S.A.  
WILLIAM C. SODEN-BIRD.  
LIEUT.-COL. G. R. B. SPAIN, C.M.G., F.S.A.  
PROF. IAN A. RICHMOND, M.A., LL.D., D.LITT., F.B.A., P.S.A.  
WM. PERCY HEDLEY, M.A., F.S.A., F.G.S.

} PAST  
PRESIDENTS.

CHARLES ION CARR BOSANQUET, M.A., D.C.L.  
WILLIAM BULMER.  
EDWARD FOYLE COLLINGWOOD, C.B.E., M.A., PH.D., D.SC.  
JOHN DAVID COWEN, M.C., M.A., F.S.A.

} VICE PRESIDENTS

**SIR EDMUND CRASTER, KT., M.A., D.LITT., F.S.A.**

L. C. EVETTS, M.A., A.R.C.A.  
GEORGE MACAULAY TREVELYAN, O.M., C.B.E., D.LITT.,  
D.C.L., LL.D., F.B.A., F.R.S.

JOHN PHILIPSON, M.A.  
GEORGE JOBAY, D.S.O., M.A. } JOINT SECRETARIES.

R. SUMMERS HUNTER, TREASURER.

C. H. HUNTER BLAIR, EDITOR OF *Archæologia Aeliana*.

T. ARTHUR LEWIS, LIBRARIAN.

WILLIAM BULMER, SENIOR CURATOR.  
ANTHONY C. S. DIXON, A.R.I.B.A. } JUNIOR CURATORS.  
DAVID SMITH, B.A., PH.D.  
R. TAYLOR, KEEPER OF COINS.

DAVID SMITH, SECRETARY AND CURATOR OF THE MUSEUM OF ANTIQUITIES OF THE  
UNIVERSITY OF DURHAM AND OF THE SOCIETY OF ANTIQUARIES OF NEWCASTLE  
UPON TYNE.

ALGERNON HOWARD HALL, F.S.A., SECRETARY FOR COUNTRY MEETINGS.

R. A. S. COWPER, L.D.S.  
CONSTANCE M. FRASER, M.A., PH.D.  
J. P. GILLAM, M.A., F.S.A.  
RT. HON. VISCOUNT GORT, M.C.  
C. R. HUDLESTON, F.S.A.  
MRS. E. M. KENYON, B.ARCH.  
A. G. MEIN.  
NOEL SHAW.  
R. F. WALKER, M.A., LL.B.  
R. P. WRIGHT, M.A., F.S.A.  
F. M. KELLETT, F.C.A., AUDITOR.

} COUNCIL

MR. JOHN MURDY, WARDEN OF KEEP.

# OFFICERS OF THE SOCIETY FROM 1813.

## PATRONS.

### Dukes of Northumberland.

Hugh	1813-17	Algernon	1848-65
Hugh	1818-47	Algernon	1867-99

### PATRONS AND PRESIDENTS.

Henry	1899-1918	Alan	1919-30
-------	-----------	------	---------

## PRESIDENTS.

Sir J. E. Swinburne	1813-60	G. R. B. Spain	1940-41
Henry earl Ravensworth	1861-78	Rev. canon C. E. Whiting	1942-43
Henry earl Ravensworth	1879-98	Sir W. W. Gibson	1944-45
F. W. Dendy	1931-32	Wm. Soden-Bird	1946-47
R. C. Bosanquet	1933-34	Rev. T. Romans	1948-50
C. H. Hunter Blair	1935-36	Ian A. Richmond	1951-53
Robert C. Hedley	1937	W. Percy Hedley	1954-56
J. Wight Duff	1937-39	Prof. E. Birley	1957-

## VICE PRESIDENTS.

Sir C. L. M. Monck	1813-67	F. J. Haverfield	1906-19
John Carr	1813-17	Very rev. H. E. Savage	1906-29
James Losh	1813-33	J. P. Gibson	1909-11
C. W. Bigge	1818-49	R. O. Heslop	1909-15
Hon. H. H. Liddell	1850-55	Rev. C. E. Adamson	1912-21
J. Hodgson Hinde	c. 1834-69	Very rev. H. Gee	1913-29
Henry lord Ravensworth	1855-61	W. H. Knowles	1913-34
John Clayton	1856-90	J. G. Hodgson	1917-26
Sir W. C. Trevelyan	1861-79	R. C. Bosanquet	1927-32
Rev. Jas. Raine	c. 1860-96	W. P. Brewis	1927-41
R. H. Allan	c. 1860-79	C. H. Hunter Blair	1930-34
Sir C. E. Trevelyan	1880-86	W. S. Corder	1930-33
Wm. Woodman	1883-95	R. C. Hedley	1931-36
Rev. J. C. Bruce	1883-92	J. Wight Duff	1933-37
W. H. D. Longstaffe	1883-98	G. R. B. Spain	1934-40
Rev. E. H. Adamson	1887-98	Sir A. M. Oliver	1935-37
Rev. canon Greenwell	1890-1918	O. J. Charlton	1935-41
Rich. Cail	1890-93	E. R. Newbiggin	1937-40
J. C. Brooks	1890-97	Rev. canon C. E. Whiting	1938-42
A. S. Stevenson	1890-1900	F. G. Simpson	1938-52
J. Philipson	1890-98	J. Oxberry	1938-40
R. R. Dees	1890-1908	R. Bertram	1941-49
C. J. Bates	1891-1902	Sir W. W. Gibson	1941-44
Rev. G. R. Hall	1893-95	W. C. Soden-Bird	1941-46
H. A. Adamson	1894-1908	Ian A. Richmond	1942-50
Sir W. Crossman	1896-1901	Sir Edmund Craster	1945-59
D. Embleton	1896-1900	Rev. Thomas Romans	1945-47
Rich. Welford	1897-1919	John D. Cowen	1946-
Thos. Hodgkin	1899-1913	Geo. Macaulay Trevelyan	1948-
J. V. Gregory	1899-1905	E. P. Shield	1949-58
S. Holmes	1899-1900	Eric Birley	1950-56
C. J. Spence	1899-1905	Wm. Percy Hedley	1951-53
Thomas Taylor	1901-38	E. F. Collingwood	1952-
L. W. Adamson	1901-11	C. I. C. Bosanquet	1954-
F. W. Dendy	1901-30	L. C. Evetts	1957-
R. C. Clephan	1902-21	William Bulmer	1959-
J. C. Hodgson	1903-26		

## OFFICERS OF THE SOCIETY FROM 1813

XV

## PAST PRESIDENTS.

F. W. Dendy	1933-40	Rev. canon C. E. Whiting	1944-53
R. C. Bosanquet	1935	Sir W. W. Gibson	1946-
C. H. Hunter Blair	1937-	Wm. Soden-Bird	1948-
R. C. Hedley	1937	Rev. T. Romans	1951-57
J. Wight Duff	1940-44	Ian A. Richmond	1954-
G. R. B. Spain	1942-	Wm. Percy Hedley	1957-

## SECRETARIES.

John Adamson	1813-55	R. O. Heslop	1899-1912
Rev. J. Hodgson	1813-34	Joseph Oswald	1913-24
J. T. Brockett, jun.	1834	S. S. Carr	1924-26
Henry Turner	1835-46	Oswin J. Charlton	1925-34
Edward Charlton	1846-70	John Oxberry	1927-39
Rev. J. C. Bruce	1856-83	H. L. Honeyman	1933-56
W. H. D. Longstaffe	1870-83	J. Philipson	1957-
Robert Blair	1883-1923	G. Jobey	1957-
Thomas Hodgkin	1883-99		

## TREASURERS.

John Bell	1813-17	Sheriton Holmes	1890-1900
John Adamson	1818-55	Robert S. Nisbet	1900-25
John Fenwick	1856-58	James A. Houston	1925-37
Matthew Wheatley	1859-62	Ernest P. Shield	1938-48
Robert White	1862-64	M. C. Perrett	1948-54
William Dodd	1865-90	R. S. Hunter	1954-

## LIBRARIANS.

John Bell	1816-64	Thomas Wake	1933-37
Wm. Lyell	1888-90	G. H. Askew	1937-38
W. W. Tomlinson	1890-93	M. C. Pottinger	1938
M. Mackey	1894-99	J. V. Harrison	1939-40
Joseph Oswald	1900-03	Madeleine H. Dodds	1941-46
C. H. Hunter Blair	1904-30	Edward Hedley	1947-53
H. L. Honeyman	1930-32	T. Arthur Lewis	1954-

EDITORS OF *Archæologia Aeliana*.

First series by a committee		Robert Blair	1883-1923
W. H. D. Longstaffe	1856-82	C. H. Hunter Blair	1924-
Thomas Hodgkin	1883		

EDITORS OF *Proceedings*.

Robert Blair	1883-1923	H. L. Honeyman	1933
S. S. Carr	1924-26	Paul Brown	1934-41
J. Oxberry	1927-32	H. L. Honeyman	1941-56

## CURATORS OF MUSEUMS.

Charles J. Spence	1890-1905	I. A. Richmond	1940-43
R. O. Heslop	1890-1913	Betty Burn	1944-46
W. Parker Brewis	1906-26	J. D. Cowen	1947-48
Wm. Hardcastle	1914-20	A. S. C. Dixon	1954-
G. R. B. Spain	1921-37	J. H. Corbitt	1954-57
Thomas Wake	1927-32	D. Smith	1958-
Wm. Bulmer	1938-	R. Taylor	1958-
J. D. Cowen	1933-39		

## SECRETARIES FOR COUNTRY MEETINGS.

William C. Soden-Bird	1924-48	A. Howard Hall	1948-
-----------------------	---------	----------------	-------

## EDITORIAL NOTE.

Council decided, at the beginning of 1957, to cease publishing *Proceedings*. The high cost of publication made this economy necessary. Council also decided to issue, in early March each year, a REPORT telling of the various activities of the Society during the preceding year, this to include:

1. Reports of the Council, of its committees and of the officers of the Society.
2. Short accounts of monthly and country meetings.
3. List of officers and committees for the current year.
4. List of members, with dates of their election, as at 31st January of each year.

Council also decided that shorter papers, such as were formerly published in *Proceedings*, should in future be printed in *Archæologia Aeliana* under the heading of NOTES. The addition of these will add to the cost of the yearly volume. Council has therefore made the following regulations in order to reduce this extra cost as far as possible.

1. All papers submitted for consideration must be clearly typed, double-spaced on quarto pages, with all references filled in ready for printing, subject only to correction of printer's errors.
2. These papers, if accepted, must be in the hands of the Editor by 1st of March each year, otherwise they cannot be included in that year's volume.
3. If more papers are accepted than can be printed in any one year, the Editor will decide as to which should have priority.
4. Authors receive twelve free copies of their papers. More copies can be had at cost price if ordered at proof stage.

C.H.H.B.