

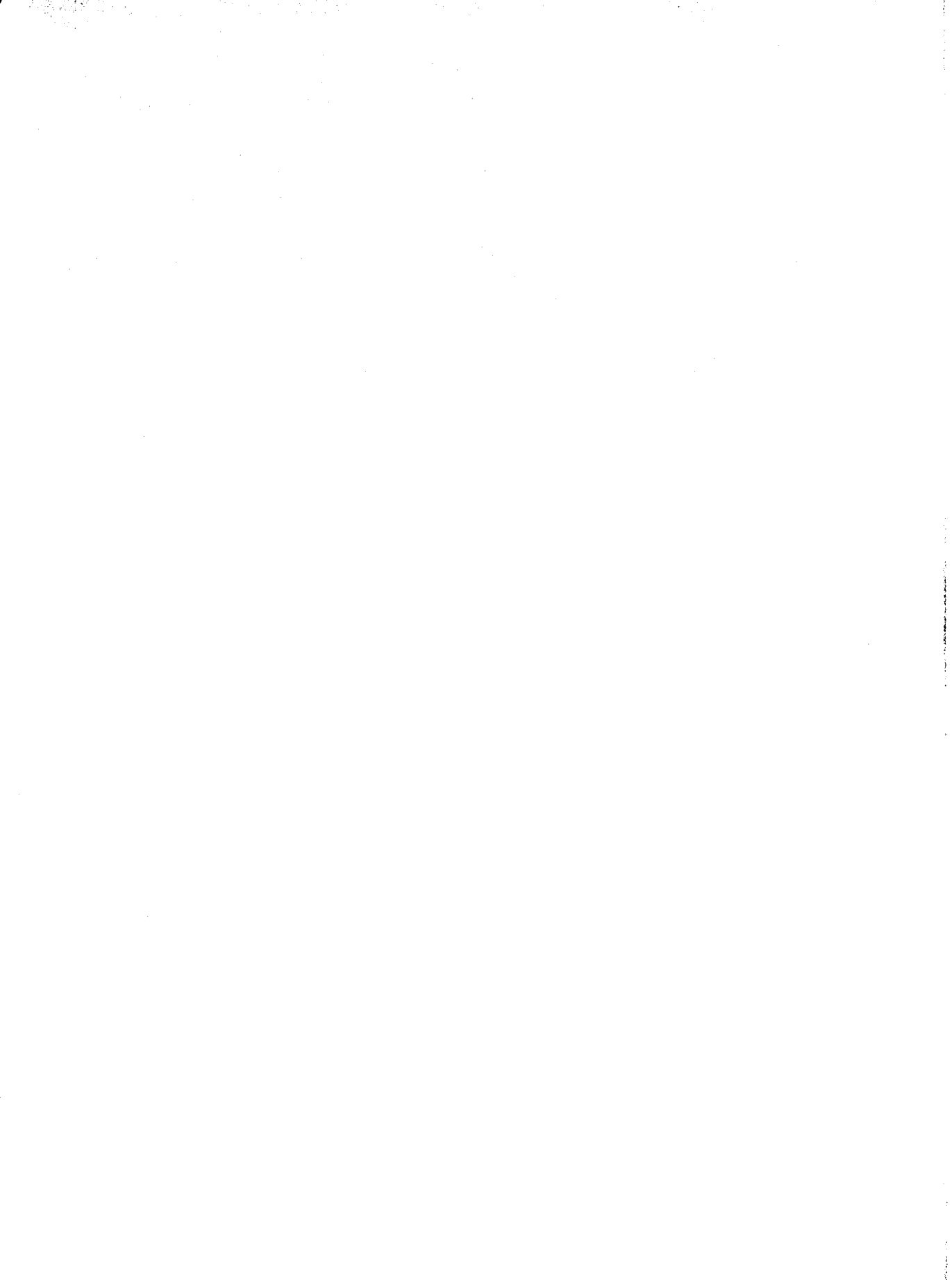
ARCHAEOLOGIA AELIANA

Fifth Series, Volume XX

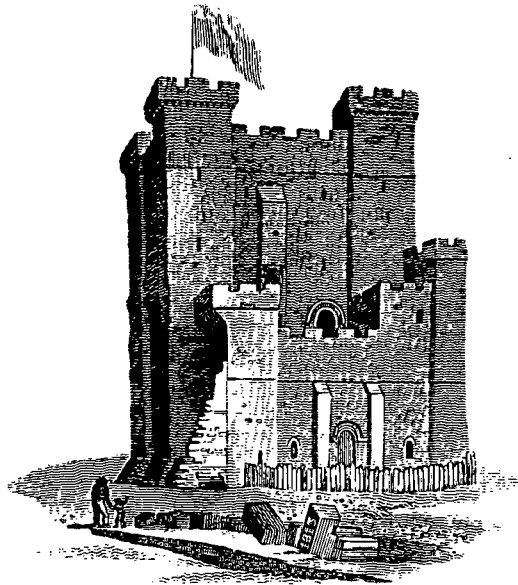


THE SOCIETY OF ANTIQUARIES
OF NEWCASTLE UPON TYNE

MCMXCII



THE SOCIETY OF ANTIQUARIES OF NEWCASTLE UPON TYNE



THE BLOCK above was printed on the half-title of the first volume published of *Archaeologia Aeliana*. Dated 1813 its engraving has been attributed to Lambert

Archaeologia Aeliana

Miscellaneous Tracts relating to Antiquity

FIFTH SERIES

Volume XX



THE SOCIETY OF ANTIQUARIES
OF NEWCASTLE UPON TYNE
MCMXCH

© 1992 Copyright reserved on behalf of the authors by
THE SOCIETY OF ANTIQUARIES
OF NEWCASTLE UPON TYNE
The Black Gate, Newcastle upon Tyne NE1 1RQ

ISSN 0261 3417
Hardback: 0 901082 49 X
Paperback: 0 901082 50 3

Editor: John Philipson M.A., F.S.A.

FILMSET BY WEARSET, BOLDON, TYNE & WEAR
AND PRINTED IN GREAT BRITAIN BY
ATHENAEUM PRESS LTD,
NEWCASTLE UPON TYNE

Contents

	Page
I Cock-fighting in Northumberland and Durham during the eighteenth and nineteenth centuries. By Professor George Jobey DSO, MA, FSA, Hon. FSA(Scot)	1
II The Design of Hadrian's Wall and its Implications. By P. R. Hill and Brian Dobson PhD, FSA	27
III Loca. By Professor J. C. Mann FSA	53
IV Barcombe B, A Second Roman "Signal" Tower on Barcombe Hill. By D. J. Woolliscroft BA, S. A. M. Swain and N. J. Lockett	57
V The Gatehouse of Morpeth Castle, Northumberland. By Peter F. Ryder BA, M.Phil	63
VI Northumberland Divided: Anatomy of a Sixteenth Century Bloodfeud. By Maureen M. Meikle Ph.D	79
VII The Castle of Ralph Fourth Baron Neville at Raby. By M. J. B. Hislop BA, Ph.D	91
VIII The Cow Port at Berwick upon Tweed. By P. F. Ryder, BA, MPhil	99
IX The White Wall, Berwick upon Tweed. By M. C. Bishop BA, Ph.D	117
X On the most advantageous line: the Tyne-Solway Canal. By Ms S. E. Thornthwaite MSc	121
XI Mrs. Gaskell and Newcastle. By Professor P. J. Yarrow MA, Doct.d'Univ. (Paris)	139
XII <i>Del. et sculp.</i> : The Society's collection of engraved copperplates. By John Philipson FSA	147
XIII Professor George Jobey DSO, MA, FSA, Hon.FSA(Scot). By Professor N. McCord FSA, FRHist.S	153
XIV Notes	
1. <i>Armamentaria</i> . By J. C. Mann	157
2. Sub-Roman brooches from Roman sites on the Northern frontier. By M. E. Snape Bsc, M.Litt	158
3. Querns at Fourstones by E. W. Lockett BA, M.Litt	160
4. A further note on the Haughton paper-moulds. By J. Philipson	161
5. A crop-circle at Longbenton Industrial Estate. By G. Jobey	162

Reviews:	
McCord, <i>North East History from the Air</i> (D. Peel)	165
Austen, <i>Bewcastle and Old Penrith; a Roman Outpost Fort and a Frontier Vicus: Excavations 1977-78</i> (B. Dobson)	165
Kearney, <i>A Social History of Consett 1840-1990</i> (J. Philipson)	167
Childs and Taylor, <i>The Anominalle Chronicle, 1307 to 1334</i> (C. M. Fraser)	167
Wallis P. and R., Ransom and Fauvel, <i>Mathematical Tradition in the north of England</i> . (J. Philipson)	168
Meaden, <i>Circles from the Sky and Goddess of the Stones</i> (K. Greene)	168
Books Received	170
Index	171

Acknowledgements

THE SOCIETY thanks the Historic Buildings and Monuments Commission (English Heritage) for grants towards the cost of publication of the reports on the Gatehouse of Morpeth Castle and the Cow Port at Berwick upon Tweed both by Peter F. Ryder and that on the White Wall at Berwick upon Tweed by M. C. Bishop. The Editor is indebted to those members who advise him on specific matters and who read papers for him. Once again he is grateful to Professor Richard Bailey who has continued to give valued assistance and to whom the Society is indebted for compiling the Index.

Editorial Note

For the guidance of authors the following regulations have been made:

1. All papers submitted for consideration must be clearly typed, double-spaced on quarto (or A4) pages, with all references filled in ready for printing, subject only to correction of printer's errors.
2. These papers, if accepted, must be in the hands of the Editor at Albany House, Blandford Square, Newcastle upon Tyne NE1 4HZ, by the second Tuesday in January each year, otherwise they cannot be included in that year's volume.
3. If more papers are accepted than can be printed in any one year, the Editor will decide as to which shall have priority.
4. Authors of articles receive twenty-five free copies of their papers. More copies can be had at cost price if ordered at proof stage.
5. Line illustrations will normally be reproduced in the text as *figures*. Line drawings should be no larger than 85×60 cm and preferably of such a proportion as will reduce to a finished size within the limits of 150×185 mm.
6. Owing to the process now adopted for printing *A.A.*, the lines of illustrations should be drawn firmly and stipples should be relatively coarse.
7. Authors are reminded that alterations at proof stage are prohibitively expensive, so the text as submitted should be final.
8. For guidance in presentation authors are referred to the *MHRA Style Book* which may be obtained from W. S. Maney & Son Ltd., Hudson Road, Leeds LS9 7DL.

Abbreviations

AA¹⁻⁵—*Archaeologia Aeliana*, first to fifth series.

AJ—*Archaeological Journal*.

CIL—*Corpus Inscriptionum Latinarum*, Vol. vii.

CW—*Transactions of the Cumberland and Westmorland Antiquarian and Archaeological Society*.

EE—*Ephemeris Epigraphica*.

JBAA—*Journal of the British Archaeological Association*.

JRS—*Journal of Roman Studies*.

Lap.Sept.—*Lapidarium Septentrionale*.

NCH—*Northumberland County History*.

NRO—*Northumberland County Record Office*

PSAN—*Proceedings of the Society of Antiquaries of Newcastle*.

PSAS—*Proceedings of the Society of Antiquaries of Scotland*.

RIB—*Roman Inscriptions of Britain*.

TWAS—*Tyne and Wear Archive Service*

THE SOCIETY OF ANTIQUARIES OF NEWCASTLE UPON TYNE

Officers and Council for 1992

PRESIDENT:

Miss C. M. Fraser, BA, PhD, FSA, FRHistS

LIBRARIAN:

D. Peel, BSc, FRSC

PAST PRESIDENTS:

Professor E. Birley, MBE, MA, DrPhil, DLitt,
FBA, FSA

L. C. Evetts, MA, ARCA

R. P. Wright, MA, FSA

J. Philipson, MA, FSA

C. M. Daniels, MA, FSA

J. M. Fleming

G. D. Robson, TD, BA

Mrs. E. M. Hart, BA

Professor N. McCord BA, PhD, FRHistS

KEEPER OF MUSEUM OF ANTIQUITIES:

C. M. Daniels, MA, FSA

COUNCIL:

Miss L. Allason-Jones, BA, MLitt, FSA

Mrs. K. M. Bibby-Wilson, BA

P. T. Bidwell, MA, LLB, FSA

Mrs. S. Bird, BA

F. C. Burton, BA

K. Charlton, FCA

R. W. Fern, BA, DipLib

A. E. Gilmour

W. V. Kendall, FIB

J. Le Gassicke, MB, BS

F. W. Manders, BA, MPhil

C. F. O'Brien, BA

Mrs. E. L. Thornborrow, BA

H. G. Welfare, BA, MPhil, FSA

VICE-PRESIDENTS:

Mrs. D. B. Charlton, BA, FSA

B. Dobson, BA, PhD, FSA

Miss R. B. Harbottle, MA, FSA

Mrs. G. McCombie, BA

D. Peel, BSc, FRSC

SECRETARIES:

D. Cutts, BA

Miss C. M. Fraser, BA, PhD, FSA

HON. SOLICITORS:

Wilkinson and Maughan

TREASURER:

P. R. M. Harbottle, MA, FCA

AUDITORS:

Price Waterhouse & Co.

EDITOR:

J. Philipson, MA, FSA