

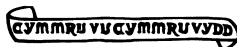
# ARCHAEOLOGIA CAMBRENSIS

Cylchgrawn Cymdeithas Hynafiaethau Cymru  
Journal of the Cambrian Archaeological Association

VOLUME 155 (2006)

Cymdeithas Hynafiaethau Cymru  
Cambrian Archaeological Association  
2007

Cymdeithas Hynafiaethau Cymru  
Cambrian Archaeological Association



Established 1846  
Registered Charity No. 216249

*The Charity's objects are to examine, preserve and illustrate the ancient monuments and remains of the history, language, manners, customs, arts and industries of Wales and the Marches and to educate the public in such matters.*

EDITOR

Material offered for publication should be sent to the Editor: W. J. Britnell, CPAT, 7a Church Street, Welshpool, Powys, SY21 7DL. Tel. 01938 553670, email [billbritnell@cpat.org.uk](mailto:billbritnell@cpat.org.uk)

REVIEWS EDITOR

Books for review should be sent to the Reviews Editor: R. J. Silvester, CPAT, 20 High Street, Welshpool, Powys, SY21 7DL. Tel. 01938 552035, email [bobsilvester@cpatfield.demon.co.uk](mailto:bobsilvester@cpatfield.demon.co.uk)

PERIODICAL LITERATURE

Periodical Literature on Wales is compiled by: J. E. Britnell, CPAT, 7a Church Street, Welshpool, Powys, SY21 7DL. Tel. 01938 553670, email [jennyb@cpat.org.uk](mailto:jennyb@cpat.org.uk)

GENERAL SECRETARY

General enquiries and enquiries regarding grants and awards should be addressed to the current General Secretary: Revd Canon Michael Coombe, 28 Gipsy Lane, Exmouth, EX8 3HN. Tel. 01395 272923, email [revparsonage@aol.com](mailto:revparsonage@aol.com)

MEMBERSHIP SECRETARY

Enquiries about membership and subscriptions and publications for sale should be addressed to the current Membership Secretary: Frances Lynch Llewellyn, Halfway House, Pontypandy, Bangor, Gwynedd, LL57 3DG. Tel. 01248 364865

© The Cambrian Archaeological Association and individual authors, 2007

ISSN 0306-6924

Typeset and Printed in Great Britain by 4word Ltd, Bristol

# Contents

Editorial note . . . . .	v
Notes on the contributors . . . . .	v
Notes on the President . . . . .	vii

## PRESIDENTIAL ADDRESS

Fragile Heritage: the archaeology of the early Roman campaigns in Wales and the borderland. By Jeffrey L. Davies . . . . .	1
---	---

## ARTICLES

Excavation of Neolithic pits, three ring-ditches and a palisaded enclosure at Cwm Meudwy, Llandysul, Ceredigion, 2003. By Kenneth Murphy and Robert T. J. Evans. . . . .	23
A Late Iron Age and Roman Farmstead at RAF St Athan, Vale of Glamorgan. Evaluation and Excavation 2002–03. By Alistair Barber, Simon Cox and Annette Hancocks. . . . .	49
Mapping <i>Isca</i> : geophysical investigation of Priory Field, Caerleon. By Peter Guest and Tim Young . . . . .	117
Conversion, Christianity, and the Late Roman transition in south-east Wales. By Andrew Seaman. . . . .	135
Maen Achwyfan and the context of Viking settlement in north-east Wales. By David Griffiths . . . .	143
St Gwynllyw’s Cathedral, Newport: the Romanesque archway. By J. K. Knight and Rita Wood . . . .	163
Some recent finds from Wales: an early medieval brooch from Powys and three medieval artefacts from south Wales. By Mark Redknap . . . . .	187

## REVIEWS AND NOTICES

Reviews . . . . .	191
Periodical Literature on Wales, 2005 . . . . .	217

THE CAMBRIAN ARCHAEOLOGICAL ASSOCIATION

Reports on Meetings .....	225
Grants and Awards .....	242
Accounts for the year ending 31 December 2005 .....	243
Officers 2005–06 .....	249
Subscriptions .....	251
The Association’s Library .....	251
Publications for sale .....	251
Index .....	253

## Editorial note

The Association is grateful for the generous grants made available by Cambria Archaeology, the Defence Aviation Repair Agency (by courtesy of Cotswold Archaeology), and Cadw for the publication of the articles on Cwm Meudwy, St Athan and Maen Achwyfan respectively. As well as thanking all those who have contributed articles or notes to this volume, the editor is also grateful to those who have acted as referees, and to the following who have given help in various different ways: Michael Coombe, Jeff Evans, Robin Griffith, John Kenyon, Frances Lynch Llewellyn, and Hugh Morgan.

W. J. BRITNELL

## Notes on the Contributors

**Alistair Barber**, BA, MIFA is Senior Project Officer at Cotswold Archaeology.

**Simon Cox**, BA, MIFA is Project Manger at Cotswold Archaeology. He was formerly a Project Officer with the archaeological fieldwork section attached to Bristol City Museum.

**Robert T. J. Evans**. Since graduating in archaeology from the University of York, he has worked in commercial archaeology for various professional units on projects in Britain and Ireland, and supervised archaeological projects in South Wales and in Lincolnshire. For about ten years he supervised on the Castell Henllys Archaeological Field School, run by the University of York, specialising in post-medieval archaeology. He collaborated with Harold Mytum on two papers on Irish gravestones. He currently works for the Gwynedd Archaeological Trust.

**David Griffiths**, BA, PhD, FSA, MIFA, is a Fellow and Lecturer in Archaeology at Rewley House, Department for Continuing Education, University of Oxford. His doctoral research was on the Viking period in the Irish Sea Region, and he has a range of relevant field survey and excavation experience, including several seasons with the National Museum of Wales at Llanbedrgoch, Anglesey. Between 1994 and 2004 he was editor of the Oxford-based research series *Anglo-Saxon Studies in Archaeology and History*, and his monograph (co-authored with R.A. Philpott and G. Egan) on the multi-period coastal trading site of Meols, Wirral, is due for completion in 2007.

**Peter Guest**, PhD, FSA is Lecturer in Roman Archaeology at Cardiff University. The archaeology of Roman Britain is his main area of research, particularly the role and use of Roman coinage, the impact of Roman ideas and practices on native British society, and the cultural changes that occurred at the end of the Roman period. His recent publications include *The Late Roman Gold and Silver Coins from the Hoxne Treasure* (British Museum Press, 2005) and *Iron Age & Roman Coins from Wales* (Moneta, 2007). He was Manager of the Roman Legionary Museum in Caerleon from 1995 to 1997.

**Annette Hancocks**, BA, MA, MIFA is Post-Excavation Manager at Cotswold Archaeology. She was formerly a Research Associate and Post-Excavation Manager at Birmingham University.

**Jeremy Knight** served as President of the Cambrian Archaeological Association in 2000–01. He is a former Inspector of Ancient Monuments in what are now English Heritage and Cadw, and has conducted excavations on Roman and medieval sites, particularly in Wales. His recent publications include *Roman France, An Archaeological Field Guide* (Tempus, 2001), *Community and Conflict: Civil War and Popish Plot in Seventeenth Century Monmouthshire* (Logaston Press, 2005), and *The End of Antiquity: Archaeology, Society and Religion AD 235–700* (Tempus, 2007).

**Kenneth Murphy** is the Director of Cambria Archaeology (Dyfed Archaeological Trust). He studied archaeology and geography at Southampton University, graduating in 1976. He joined Cambria Archaeology in 1979 and since then has worked on numerous archaeological projects across south-west Wales. Initial work for Cambria was on prehistoric and other excavations, such as the excavation of an Iron Age defended farmstead at Penycoed, Carmarthenshire and survey and excavation at Cardigan Castle, but latterly he has been engaged on a wider range of projects including surveying medieval field systems in Carmarthenshire and prehistoric fields on St David's Head, characterising the historic landscapes of south-west Wales, and research on the picturesque landscapes at Hafod, Ceredigion, Piercefield, Monmouth, and Penllergaer, Swansea. Results of his work have been published in regional, national and international journals.

**Andrew Seaman**, BA (hons), MA, has studied archaeology at Bournemouth and most recently Cardiff University. He specialises in the archaeology of Early Medieval Wales and the West, and is currently undertaking a PhD at the School of History and Archaeology, Cardiff University. His doctoral research is focusing on settlement and landscape in the Vale of Glamorgan in the first millennium AD.

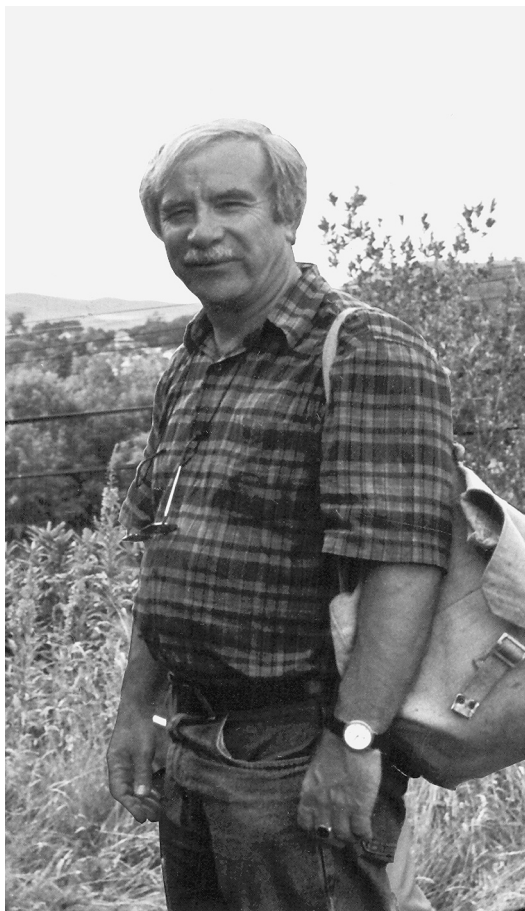
**Rita Wood** has been a fieldworker since 1995 for the *Corpus of Romanesque Sculpture in Britain and Ireland* ([www.crsbi.ac.uk](http://www.crsbi.ac.uk)), working first in the West Riding, and now in the East Riding of Yorkshire. An interest in the major themes and variations of Romanesque sculpture has led to several excursions outside Yorkshire, and papers on sculpture in the south-west of Britain have been published for Malmesbury Abbey (Wiltshire) and St Marychurch (Devon), with a paper on Fownhope (Herefordshire) expected this year.

**Tim Young**, PhD, FGS is a geoarchaeologist specialising in archaeogeophysics and archaeometallurgy. In addition to running his consultancy, GeoArch, he has worked for Cardiff University since 1988, where he is currently a Part-time Tutor teaching archaeogeophysics, and for Swansea University since 1993 as Part-time Tutor in Geology. His research interests include the development of technology for early iron extraction/working in Britain and Ireland and early, particularly Roman, mineral exploitation in South Wales.

## Notes on the President, 2005–2006

**Jeffrey Davies** BA, PhD, FSA was born in Neath and brought up in the Swansea valley. Educated at Ystalyfera Grammar School he read Archaeology at University College, Cardiff under the redoubtable trio of Richard Atkinson, Leslie Alcock and Michael Jarrett where he also obtained his doctorate. Appointed Faculty Lecturer in Archaeology at the University of Wales, Aberystwyth he initially served as a member of the Department of Classics before being transferred to the Department of History. He is currently Senior Lecturer in the Department of History and Welsh History. His research interests span the later prehistoric and Roman period, with special reference to that remarkable organisation, the Roman Army. He has undertaken fieldwork, including extensive excavations, on a number of late prehistoric and Romano-British sites in Wales and has published widely. Some of his principal works include *Excavations at Segontium (Caernarfon) Roman Fort 1975–1979* (with P. J. Casey), *Prehistoric Wales* (with F. Lynch and S. Aldhouse-Green), *Roman and Early Medieval Wales* (with C. Arnold), *Roman Camps in Wales and the Marches* (with R. H. Jones), and *Cardiganshire County History. Volume I* (ed. with D. P. Kirby). He was Editor of *Archaeology in Wales* from 1967–1984 and is presently serving or has served on a number of national and local archaeological bodies, including the General

Committee of the Cambrian Archaeological Association, two of the Welsh Archaeological Trusts, and the Archaeology & Art Committee of the Board of Celtic Studies of the University of Wales. He is currently engaged in the preparation of a new edition of *The Roman Frontier in Wales*.



Photograph: Robin Griffith

