

THREE SCOTTISH CARMELITE FRIARIES

Excavations at Aberdeen, Linlithgow and Perth 1980-86



EDITED BY J A STONES

SOCIETY OF ANTIQUARIES OF SCOTLAND MONOGRAPH SERIES NUMBER 6

**THREE SCOTTISH CARMELITE FRIARIES: ABERDEEN, LINLITHGOW
AND PERTH**

EDITED BY JA STONES

Cover illustration: group of Carmelite friars taken from marginal roundel in Book of Hours c 1470, by kind permission of the Bibliothèque Nationale, Paris (MS lat 1176, fol 132r).

JA STONES (EDITOR) DW HALL AND WJ LINDSAY
WITH MF BRUCE JF CROSS AND RM SPEARMAN

THREE SCOTTISH CARMELITE FRIARIES

EXCAVATIONS AT ABERDEEN,

LINLITHGOW AND PERTH 1980-1986

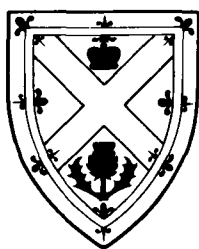
ILLUSTRATION J DUNBAR CH YARRINGTON

PHOTOGRAPHY BR WHITE

CONTRIBUTIONS BY WE BOYD IB COWAN T COWIE
B FORD NL MACASKILL JC MURRAY C SMITH
AND OTHERS

SOCIETY OF ANTIQUARIES OF SCOTLAND EDINBURGH 1989

MONOGRAPH SERIES NUMBER 6



SOCIETY OF ANTIQUARIES
OF SCOTLAND

MONOGRAPH SERIES

EDITORS IBM RALSTON HK MURRAY AN SHEPHERD

Volume editors: HK Murray AN Shepherd

PREVIOUS VOLUMES

Number 1

CL CURLE

Pictish and Norse finds from the
Brough of Birsay 1934-74 (1982)

ISBN 0 903903 01 6

Number 2

JC MURRAY

Excavations in the medieval burgh
of Aberdeen 1973-81 (1982)

ISBN 0 903903 02 4

Number 3

H FAIRHURST

Excavations at Crosskirk Broch,
Caithness (1984)

ISBN 0 903903 03 2

Number 4

JR HUNTER

Rescue excavations on the Brough of
Birsay 1974-82 (1986)

ISBN 0 903903 04 0

Number 5

P HOLDSWORTH

Excavations in the medieval burgh
of Perth 1979-1981 (1987)

ISBN 0 903903 05 9

This volume is published with the aid of a generous grant from
the Historic Buildings and Monuments Directorate of the
Scottish Development Department.

The frontispiece is published with the aid of a grant from the
Order of Carmelites.

The Society is also grateful for grants towards publication from:

Mountleigh Northern Developments Limited for
production of a full colour cover.
The Russell Trust.

British Library Cataloguing in Publication Data

Three Scottish Carmelite friaries: excavations at Aberdeen,
Linlithgow and Perth, 1980-86.—

(Society of Antiquaries of Scotland monograph series
ISSN 0263-3191; 6).

1. Scotland. Friaries. Excavation of remains

I. Stones, J. A. II. Series

941.1'

ISBN 0 903903 06 7

Printed by Waverley Press (Aberdeen) Limited

CONTENTS

Acknowledgements	7	
List of illustrations	9	
List of tables	13	
Foreword by the Very Reverend Father Provincial Piet Wijngaard, O Carm	17	
1 Introduction JA Stones	19	
2 The Carmelite friars IB Cowan	21	
3 The buildings of the friars in Scotland JA Stones	23	
4 Aberdeen Carmelite friary	28	
4.1 The documentary evidence RM Spearman	28	
4.2 Aberdeen: the excavations JA Stones	35	
5 Linlithgow Carmelite friary	53	
5.1 The documentary evidence RM Spearman	53	
5.2 Linlithgow: the excavations WJ Lindsay	57	
5.3mf Linlithgow radiocarbon determination		1: B11
6 Perth Carmelite friary	95	
6.1 The documentary evidence RM Spearman	95	
6.2 Perth: the excavations DW Hall	99	
7 The burials	111	
7.1 The burials at Aberdeen, Linlithgow and Perth friaries JA Stones	111	
7.2mf Linlithgow. The burials WJ Lindsay		1: B12
7.3 Perth. The wooden coffins. Summary report WE Boyd	117	
7.4mf Perth. The coffins and other wood samples WE Boyd		1: D6
7.5 The skeletal remains JF Cross, MF Bruce	119	
7.6mf The skeletal remains. Description of microfiche contents JF Cross		1: E5
7.7mf Aberdeen, 12 Martin's Lane. Skeleton record sheets and tables JF Cross		2: A3
7.8mf Aberdeen, Hadden Street. Skeleton record sheets and tables JF Cross		5: D7
7.9mf Aberdeen radiocarbon determinations		5: E4
7.10mf Linlithgow. Skeleton record sheets and tables JF Cross		5: F1
7.11mf Perth. Skeleton record sheets and tables JF Cross		10: G1
8 The pottery	143	
8.1 Summary report JC Murray	143	
8.2mf Aberdeen pottery JC Murray		11: G1
8.3mf Linlithgow prehistoric pottery T Cowie		11: G9
8.4mf Linlithgow Roman pottery WJ Lindsay		11: G11
8.5mf Linlithgow medieval and post-medieval pottery WJ Lindsay		12: A3
8.6mf Perth pottery NL MacAskill		12: A11

9	The small finds	147
9.1	Summary report JA Stones	147
9.2mf	The small finds. Introduction to site reports and catalogues JA Stones	12: C1
9.3mf	Aberdeen small finds	12: C2
9.3.1	Glass objects JA Stones, R Oddy	
9.3.2	Stone objects JA Stones with a contribution by G Stell	
9.3.3	Ceramic objects DW Hall	
9.3.4	Lead objects JA Stones	
9.3.5	Copper alloy objects JA Stones	
9.3.6	Iron objects JA Stones	
9.3.7	Bone objects JA Stones	
9.3.8	Coins and coin weight D Bateson, N Holmes	
9.4mf	Linlithgow prehistoric small finds	12: E6
9.4.1	Lithic objects D Lehane	
9.4.2	Jet objects IAG Shepherd	
9.4.3	Bronze object IAG Shepherd	
9.5mf	Linlithgow medieval and post-medieval small finds	12: F1
9.5.1	Glass objects WJ Lindsay	
9.5.2	Stone objects G Stell with a contribution by WJ Lindsay	
9.5.3	Silver objects WJ Lindsay	
9.5.4	Lead objects WJ Lindsay	
9.5.5	Copper alloy objects WJ Lindsay with contributions by J Cherry, AR Goodall	
9.5.6	Iron objects WJ Lindsay with contributions by IH Goodall, J Higgitt	
9.5.7	Coins and jetton N Holmes	
9.5.8	Wall plaster, pigment containers and pigments WJ Lindsay with a contribution by H Howard	
9.6mf	Perth small finds	13: B7
9.6.1	Glass objects B Ford	
9.6.2	Stone objects B Ford with a contribution by G Stell	
9.6.3	Ceramic objects DW Hall	
9.6.4	Lead objects B Ford	
9.6.5	Copper alloy objects B Ford with a contribution by J Cherry	
9.6.6	Iron objects B Ford with a contribution by A Walsh	
9.6.7	Bone objects B Ford	
9.6.8	Coin B Ford	
10	The environmental evidence	166
10.1	Introduction JA Stones	166
10.2mf	Linlithgow. The owl pellets R Ralph	13: F1
10.3mf	Perth. The animal remains C Smith	13: F2
	Reference list	167

ACKNOWLEDGEMENTS

The editor and authors wish to record their gratitude for many forms of assistance during the initial excavations and in the preparation of these reports.

FINANCE

The excavations at Aberdeen and Linlithgow and the following post-excavation work was financed by the Scottish Development Department (Historic Buildings and Monuments), which has also supported the publication of this volume. The Perth excavation was funded by the Manpower Services Commission, with additional support from Historic Buildings and Monuments. The analysis of the skeletal remains from the three friaries has also been supported by the Anatomical Society of Great Britain and Ireland and the Wellcome Trust.

ACCESS TO SITES

Permission to excavate the sites in Aberdeen was granted by Imperial House Properties, London (12 Martin's Lane) and Grampian Regional Council Roads Dept (19-25 Hadden Street). The Linlithgow site was excavated with the cooperation of the then owner of Nether Parkley House, Mr Moran. The present owner, Inglis McAulay, kindly allowed access to photograph the architectural fragment built into the house. At Perth, permission was granted by the Scottish Development Agency.

ASSISTANCE DURING EXCAVATIONS

Aberdeen: Dr Susan Baillie, Ailsa Baird, Jadwiga Barnes, Meryl Bruce, Jan Dunbar, Brian Duncan, Moira Greig, Marguerite Haites, George Leiper, the late Morag Murray, Stewart Thain, Pamela White.

Linlithgow: Steven Boyle, Jane Page, Robert Pollock, Lindsay Ross, Michael Spearman, Claire Walsh, all of whom assisted also with the initial post-excavation work.

Perth: Anthony Angus, Gerry Colquhoun, Dave Law, Bryan McMaster, Isaac Stewart and many local volunteers.

ADVICE AND ASSISTANCE IN PREPARATION OF THE ARCHAEOLOGICAL AND HISTORICAL REPORTS

Particular thanks are recorded to those, some also contributors to the volume, who have provided their advice and expertise during the long process of preparing the volume: Linda Blanchard, David Bowler, John Cherry, Geoffrey Collins, Professor Ian Cowan, Judith Cripps, Elizabeth Eames, Alison Goodall, Dr Ian Goodall, Dr John Higgitt, Philip Holdsworth, Charles Murray, Dr Revel Oddy, David Robinson, Geoffrey Stell, Richard Welander, Nan Wylie. WJ Lindsay also wishes to acknowledge his debt to the late Doreen Hunter.

ADVICE AND ASSISTANCE IN PREPARATION OF SKELETAL REPORT

Richard Abel, Dr John Calder, Alison Cameron, Dr Robert Dickie, Rachael Horberry, Mr Neill Kerr, *Charles Lee*, *Dr Keith Manchester*, *Bridgit Milne*, Charlotte Roberts, Alison Todd, Marion Simpson, Dr Jamie Weir.

OTHER ASSISTANCE

The editor would like to thank her colleagues in the Aberdeen Art Gallery and Museums Dept and the monograph editors for their help and advice. She is also grateful to Alison Cameron, whose editorial assistance in the completion of the reports was invaluable, and to Margaret Moir and Nicola Scott who typed the final (and many previous) versions.

Finally, the editor and authors gratefully acknowledge the encouragement and support of the Carmelite order throughout this project.

ACKNOWLEDGEMENTS FOR ILLUSTRATIONS

Ill 5 was provided by Aberdeen City Libraries. Ill 44, 90, 91 are reproduced by permission of the Royal Commission on the Ancient and Historical Monuments of Scotland. Ill 98 is reproduced by permission of Aberdeen University Library. Ill 69 is a photograph by Dr Juliet Cross. Ill 28, 33, 37, 82 are photographs by William J Lindsay. Ill 64, 65, 73 are photographs by Carole Ross.

ILLUSTRATIONS

Frontispiece	Seal matrix of the prior of Perth Carmelite friary 13th-14th century. Oyster and scallop shells, and sherds of pottery vessel used as containers for pigments, with lumps of pigment, from Linlithgow Carmelite friary.	16
1	Carmelite friaries in Scotland, with Hulne in Northumberland	20
2	The former church of the Carmelite friars at South Queensferry	23
3	Plans of Scottish Carmelite friaries and of the friary at Hulne, Northumberland.	25
4	Aberdeen. Location of lands in or near the burgh owned by the Carmelites or providing income through rent, and mentioned in Chapter 4.1	29
5	Part of Parson James Gordon's map of Aberdeen (1661) showing positions of Dominican, Franciscan and Carmelite friaries, and of the Trinitarian house.	31
6	Location of Aberdeen friary sites	34
7	The site at 12 Martin's Lane during excavation	36
8	Aberdeen, 12 Martin's Lane. Trenches 4, 4A and 5. Plan of Period 1	37
9	Aberdeen, 12 Martin's Lane. Trenches 4, 4A and 5. Plan of Period 2	39
10	Aberdeen, 12 Martin's Lane. Trench 4. Mason's mark on a stone used in construction of Building 1	40
11	Aberdeen, 12 Martin's Lane. Trench 5. Clay base for water pipe with opening to culvert through wall CA	41
12	Aberdeen, 12 Martin's Lane. Trench 4A. Feature EC	42
13	Aberdeen, 12 Martin's Lane. Trench 4. Interior of Building 1 at close of excavation	42
14	Aberdeen, 12 Martin's Lane. Trenches 4, 4A and 5. Plan of Period 2c	43
15	Aberdeen, 12 Martin's Lane. The post-Reformation burial of a young child, SK 18, and disturbed bones reburied during Period 4	44
16	Aberdeen, 12 Martin's Lane. Trenches 4, 4A and 5. Plan of Period 3	45
17	Aberdeen, 12 Martin's Lane. Trenches 4, 4A and 5. Plan of Period 4	47
18	Aberdeen, 12 Martin's Lane. Trenches 1 and 3. Plan of Period 2a	48
19	Aberdeen, 12 Martin's Lane. Trenches 1 and 3. Plan of Periods 3a/4a	49
20	Aberdeen Carmelite friary. Summary of evidence from excavations and stray finds in the Green area	52
21	Location of Linlithgow friary site	56
22	Linlithgow. Architectural fragment built into wall of Nether Parkley House, Linlithgow	58
23	Linlithgow. Excavations and intrusions prior to 1983	59
24	Linlithgow. Plan of Period 1. Prehistoric pits and gullies	60
25	Linlithgow. Some of the Period 1 cut features present within the chapter house, which was constructed during Period 3, Phase 10. Looking W	61
26	Linlithgow. Plan of Period 1. Neolithic stone spreads	62

27	Linlithgow. Plan of Period 2, Phase 1	65
28	Linlithgow. Plan of Period 2, Phase 2. Pre-friary chapel	67
29	Linlithgow. Plan of Period 2, Phase 3. Building 1	68
30	Linlithgow. Detail of decorated wooden handle of knife (247) found in occupation layer within Building 1	69
31	Linlithgow. Plan of Period 2, Phase 4. Building 1	70
32	Linlithgow. Plan of Period 3, Phase 6. Friary church	73
33	Linlithgow. E end of friary church, constructed in Period 3, Phase 6, with most intrusive features removed. In the foreground is the high altar with socketed stones at NE and SE corners to support a retable. Looking W	75
34	Linlithgow. Plan of Period 3, Phase 8. Building 2	76
35	Linlithgow. Plan of Period 3, Phase 8. E range	78
36	Linlithgow. Plan of Period 3, Phase 10. E range	81
37	Linlithgow. Detail of SE corner of chapter house constructed during Period 3, Phase 10. The S ends of two joist slots, mortar facing on the inner surfaces of the walls and a possible recess (6616) in the E wall are visible. Looking W	82
38	Linlithgow. Plan of pre-Phase 11 medieval features. S range	84
39	Linlithgow. Plan of Period 3, Phase 11. S range	85
40	Linlithgow. Plan of Period 3, Phases 12-14. W range and claustral area	88
41	Linlithgow. General plan of friary in the later Middle Ages	91
42	Perth. Location of lands in or near the burgh owned by the Carmelites or providing income through rent, and mentioned in Chapter 6.1	96
43	Location of Perth friary site	100
44	Perth. Plan of Period 1	101
45	Perth. Reconstruction drawing of the ridge finial base (385) found during the watching brief E of Building 1	103
46	Perth. Plan of Period 2	<i>facing</i> 103
47	Perth. Plan of Period 3, showing SK 13	105
48	Perth. Plan of Period 4 and key to maps and plans	107
49	Burials at Aberdeen friary	112
50	Aberdeen. Bracelet (134) on left wrist of SK 84	116
51	Aberdeen. Possible grave marker adjacent to SK 32 and SK 37.	116
52	Perth. Reconstruction drawing of coffin 207	118
53mf	Perth. Wooden coffins. Coffin 207. Calculation parameters for establishing minimum values of original tree trunk dimensions	1: E4
54	The human skeleton	120
55	Side view of the vertebral column	120
56	Left side of the skull	120
57	Series of thoracic vertebrae showing increasing lipping (left to right) around margins of the vertebral bodies, illustrating age-related degenerative changes of the vertebral column	121
58	Age distribution of SK burials from each site, excluding the two broad age categories of Immature and Adult	123
59	Adult male and female pelves. The female pelvis (right), although smaller in size, is proportionally broader than the male	123
60	Adult male and female skulls. The male skull (left) is more robust than the female, with prominent brow-ridges	124
61	Age by sex distribution of SK burials from each site, excluding the broad age category of Adult	124
62	Distribution of stature of SK burials (males on left) from Aberdeen and Linlithgow	125

63	Range of stature of SK burials (males on left) from Aberdeen and Linlithgow	126
64	CAT scans of adult left femora. Platymetric (right) shows marked flattening from front (top) to back; a distinct flange is also visible on the right-hand side of the shaft	128
65	CAT scans of adult tibiae. Platycnemic tibia (right) shows marked degree of flattening from side to side	128
66	Evidence of healed fracture on the left side of an adult skull SK 111 from Aberdeen	130
67	Multiple healed rib fractures in Aberdeen SK 38	130
68	The femur on the right shows a well-healed fracture of the upper shaft (normal femur on the left)	131
69	Shoulder joint (scapula and humerus) showing severe destruction of the joint surfaces with virtual loss of the humeral head and eburnation on both joint surfaces	132
70	Fifth lumbar vertebra showing detached rear portion of the neural arch—spondylolysis	132
71	Irregular raised island of bone on the knee joint surface of the femur—osteochondritis dissecans	133
72	Signs of inflammatory change—periostitis—on the tibial shaft	133
73	Radiograph of an adult tibia to show Harris lines—fine white lines passing horizontally across the shaft	134
74	Frontal bone of a child's skull showing fine pitting—cribra orbitalia—on the roof of the eye-sockets	135
75	Adult skull showing persistent metopic suture between the two halves of the frontal bone	135
76	View of the skull from behind to show small islands of bone known as wormian ossicles along the lambdoid suture	136
77	A projection or 'bun' at the rear of the skull interrupts its otherwise continuous smooth curve	136
78	Osteomyelitis in a fibula: normal bone is seen in the upper part of the section	138
79	Radiograph of the spine of Aberdeen SK 26 showing destruction and collapse of the vertebral bodies	138
80	Mandible showing large carious cavities on the molar teeth	139
81	Adult skull showing evidence of an abscess around the roots of the upper left first molar. The teeth show heavy uneven wear on their biting surfaces and moderately heavy calculus deposits	140
82	SK 19 from Linlithgow, a young woman who may have died in a fire	140
83mf	Specimen skeleton record sheet used for adult and immature SK burials	1: E7-8
84mf	Specimen skeleton record sheet showing epiphyses of immature SK burials	1: E9-10
85	Main types of pottery vessels associated with medieval and post-medieval activity at Aberdeen, Linlithgow and Perth Carmelite friary sites	144
86mf	Aberdeen. Medieval and post-medieval pottery	11: G8
87mf	Linlithgow. Medieval and post-medieval pottery	12: A10
88mf	Perth. Medieval and post-medieval pottery	12: A13
89	Linlithgow. Jet armlet	148
90	Linlithgow. Stone basin, window tracery, window mullion, corbelled capital	149
91	Perth. Base of ridge finial	150
92	Aberdeen. Roof slates	151
93	Window glass	152
94	Window lead	153
95	Perth. Copper alloy matrix of prior's seal	154

96	Copper alloy tweezers, copper alloy and silver book fittings	155
97	Binding of Duns Scotus' <i>Super sententiarum</i> , attributed by an inscription to the Aberdeen Carmelites	156
98	Copper alloy casket fittings, iron candlestick and iron keys	157
99	Linlithgow. Copper alloy and iron buckles, copper alloy strap end and silver brooch pin	158
100	Copper alloy bracelet, ring, fitting, twisted wire rings, pins and lace-ends	159
101	Linlithgow. Copper alloy vessels	160
102	Glass vessels	160
103	Perth. Stone bowl	161
104	Iron knives, spoon bit, strip, whetstone	161
105	Linlithgow. Copper alloy pendant	162
106	Aberdeen. Copper alloy coin weight	163
107mf	Aberdeen. Stone, lead, iron and bone objects	12: C2
108mf	Linlithgow. Lead, copper alloy and iron objects	12: F1
109mf	Perth. Stone, ceramic, lead, copper alloy and iron objects	13: B7

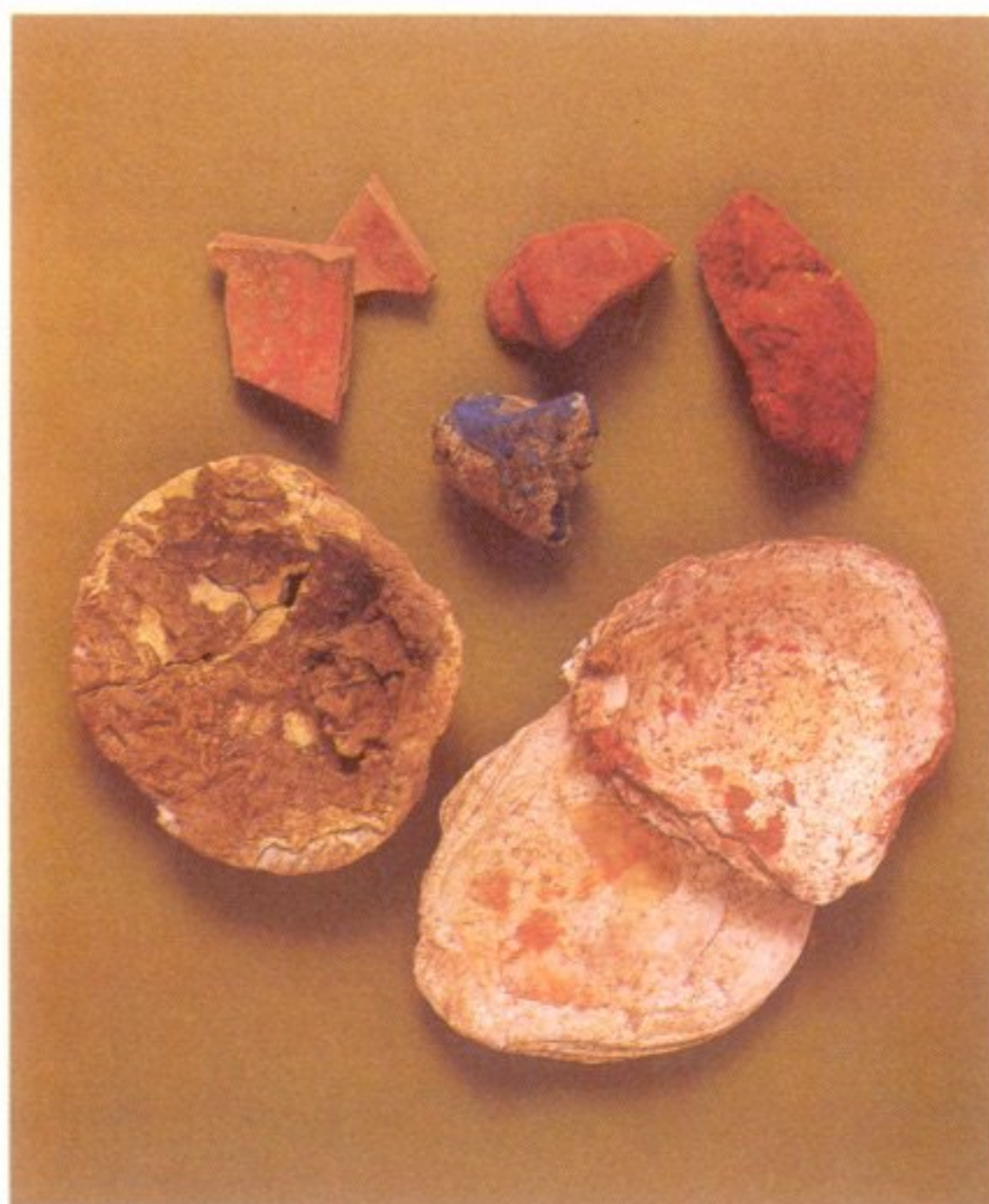
Note: Throughout the volume 'mf' indicates that the information is in microfiche inside the back cover.

TABLES

1mf	Aberdeen. Documentary evidence. Correspondence between 1542 rental and charter evidence of lands and <i>Aberdeen Friars</i>	1: A4
2mf	Aberdeen. 12 Martin's Lane. Catalogue of features	1: A5-B9
3mf	Aberdeen. Hadden Street. Catalogue of features	1: B10
4mf	Perth. Wooden coffins. Summary of wood identification	1: E1
5mf	Perth. Wooden coffins. Coffin 207. Maximum dimensions of boards	1: E2
6mf	Perth. Wooden coffins. Coffin 207. Data used and results of calculations of dimensions of the original tree trunks from which the boards were split	1: E3
7	Skeletal remains. Minimum element count of individual bones, combining the SK burials and the disarticulated bones, to give an estimate of the minimum number of individuals represented in each collection	120
8	Skeletal remains. Age categories, showing the age range and abbreviations (in parenthesis) used in the figures	121
9	Skeletal remains. Distribution of SK burials assigned to the broad age categories of Immature and Adult	122
10	Skeletal remains. Age distribution of the immature and of the adult SK burials respectively	122
11	Skeletal remains. Mean stature (cm) of males and females in a series of British skeletal collections	126
12	Skeletal remains. Description of skull and face shape, using all available adult material, for each site	127
13	Skeletal remains. Cranial index of males and females	127
14	Skeletal remains. Cranial height index of males and females from Aberdeen and Linlithgow	127
15	Skeletal remains. Distribution of meric index of all available adult femora from Aberdeen and Linlithgow	127
16	Skeletal remains. Distribution of cnemic index of all available adult tibiae from Aberdeen and Linlithgow	127
17mf	Skeletal remains. Age categories and age ranges	1: F6
18mf	Skeletal remains. Definitions of symbols and abbreviations used to describe dental formulae	1: F7
19mf	Skeletal remains. Abbreviations used as a prefix for each bone type when labelling the disarticulated bones	1: F8
20mf	Skeletal remains. Methods used to take immature and adult cranial measurements	1: F10
21mf	Skeletal remains. Methods used to take immature post-cranial measurements	1: F12
22mf	Skeletal remains. Methods used to take adult post-cranial measurements	1: F13

23mf	Skeletal remains. Abbreviations and formulae of skeletal indices calculated for the adult material	1: G1
24mf	Skeletal remains. Recorded cranial non-metric traits	1: G2
25mf	Skeletal remains. Aberdeen. Matched bones	4: E7-G4
26mf	Skeletal remains. Aberdeen. Disarticulated dentitions	5: A3-B2
27mf	Skeletal remains. Aberdeen. Minimum count	5: B4
28mf	Skeletal remains. Aberdeen. Age distribution	5: B5-6
29mf	Skeletal remains. Aberdeen. Immature cranial metric	5: B7-14
30mf	Skeletal remains. Aberdeen. Immature post-cranial metric	5: C1-4
31mf	Skeletal remains. Aberdeen. Adult cranial metric	5: C5-8
32mf	Skeletal remains. Aberdeen. Adult post-cranial metric	5: C9-12
33mf	Skeletal remains. Aberdeen. Adult indices	5: C13-14
34mf	Skeletal remains. Aberdeen. Non-metric traits	5: D1-4
35mf	Skeletal remains. Aberdeen. Pathological conditions	5: D5-6
36mf	Skeletal remains. Aberdeen, Hadden Street. Minimum count	5: E3
37mf	Skeletal remains. Linlithgow. Matched bones	10: B3-12
38mf	Skeletal remains. Linlithgow. Disarticulated dentitions	10: B13-D9
39mf	Skeletal remains. Linlithgow. Minimum count	10: D10
40mf	Skeletal remains. Linlithgow. Age distribution	10: D11-12
41mf	Skeletal remains. Linlithgow. Immature cranial metric	10: D13-E6
42mf	Skeletal remains. Linlithgow. Immature post-cranial metric	10: E7-10
43mf	Skeletal remains. Linlithgow. Adult cranial metric	10: E11-14
44mf	Skeletal remains. Linlithgow. Adult post-cranial metric	10: F1-4
45mf	Skeletal remains. Linlithgow. Adult indices	10: F5-6
46mf	Skeletal remains. Linlithgow. Non-metric traits	10: F7-10
47mf	Skeletal remains. Linlithgow. Pathological conditions	10: F11-12
48mf	Skeletal remains. Perth. Matched bones	11: C9-D1
49mf	Skeletal remains. Perth. Disarticulated dentitions	11: D2-5
50mf	Skeletal remains. Perth. Minimum count	11: D6
51mf	Skeletal remains. Perth. Age distribution	11: D7-8
52mf	Skeletal remains. Perth. Immature cranial metric	11: D9-E2
53mf	Skeletal remains. Perth. Immature post-cranial metric	11: E3-6
54mf	Skeletal remains. Perth. Adult cranial metric	11: E7-10
55mf	Skeletal remains. Perth. Adult post-cranial metric	11: E11-14
56mf	Skeletal remains. Perth. Adult indices	11: F1-2
57mf	Skeletal remains. Perth. Non-metric traits	11: F3-5
58mf	Skeletal remains. Perth. Pathological conditions	11: F6
59	Aberdeen, Linlithgow, Perth. Non-Scottish medieval and post-medieval pottery	145
60mf	Aberdeen, 12 Martin's Lane. Catalogue of layers producing pottery and small finds	12: B1-4
61mf	Aberdeen, Hadden Street. Catalogue of layers producing pottery	12: B5
62mf	Linlithgow. Catalogue of contexts producing pottery and small finds	12: B7-10
63mf	Perth. Catalogue of contexts producing pottery and small finds	12: B11-12
64mf	Linlithgow. Lithic objects. Main categories of assemblage	12: E6
65mf	Linlithgow. Lithic objects. Analysis of flakes by striking platform and bulb of percussion	12: E7
66mf	Linlithgow. Lithic objects. Analysis of flakes by (a) type and (b) condition of edges	12: E8
67mf	Linlithgow. Lithic objects. Morphological and edge damage types	12: E8
68mf	Linlithgow. Pigments. Examination of dispersion samples	13: B5-6
69mf	Seal impressions of Carmelite houses in Scotland	13: D10

70mf	Perth. Distribution of recognised nail types by period	13: E6
71mf	Perth. Animal remains. Numbers of bones identified from each species by period	13: F5
72mf	Perth. Animal remains. Minimum numbers of animals present in each period	13: F5
73mf	Perth. Animal remains. Presence of bones of food-forming mammals from nine sites in Perth (12th-16th century levels only)	13: F6
74mf	Perth. Animal remains. Numbers and percentages of cattle bones classified as to age category and period	13: F7
75mf	Perth. Animal remains. Numbers and percentages of sheep/goat bones classified as to age category and period	13: F7
76mf	Perth. Animal remains. Bones gnawed by dogs or rodents	13: F10
77mf	Perth. Animal remains. Expected and actual numbers and percentages of cattle and sheep/goat from Periods 1-3	13: F13



Frontispiece Seal matrix of the prior of Perth Carmelite friary (417) 13th-14th century. Oyster (upper: 299, lower: 300) and scallop (310) shells and sherds of pottery vessel (303) with lumps of pigment (306, 307, 308), from Linlithgow Carmelite friary.

FOREWORD

As a Carmelite Prior Provincial I am grateful to have been asked to write a foreword to this volume on the Carmelite friaries at Aberdeen, Linlithgow and Perth. Actually we should commence with the last mentioned foundation first, for the Carmelite historian, Father Joachim Smet, writes in his *A History of the Brothers of Our Lady of Mount Carmel* (Vol 1, 32; Carmelite Spiritual Center, Darien, Illinois, USA 1975): 'The Carmelite Order probably spread to Scotland and Ireland from England. Tullilum (Perth) is the earliest Scottish foundation, followed by Berwick (1270) and Aberdeen (c 1273)'. I am writing from The Friars, Aylesford (Kent), which together with Hulne was the first foundation (1242) of the Carmelites in Britain. Aylesford must have been an influence on one or more of the three friaries described in this volume.

This volume is mainly based on excavations undertaken since 1980. On behalf of the Carmelites, I would like to thank all connected with the digs for all they have done to unearth an important part of our history and for keeping us informed throughout. In 1982 Miss Judith Stones, one of the archaeologists much involved with the project, wrote to my predecessor, Father Alphonsus Brennan: 'Carmelite friaries present an intriguing problem to the archaeologist', because up to now very few have been extensively excavated. This present volume will go a long way in rectifying that situation.

Piet H. Wijngaard, O. Carm
Prior Provincial