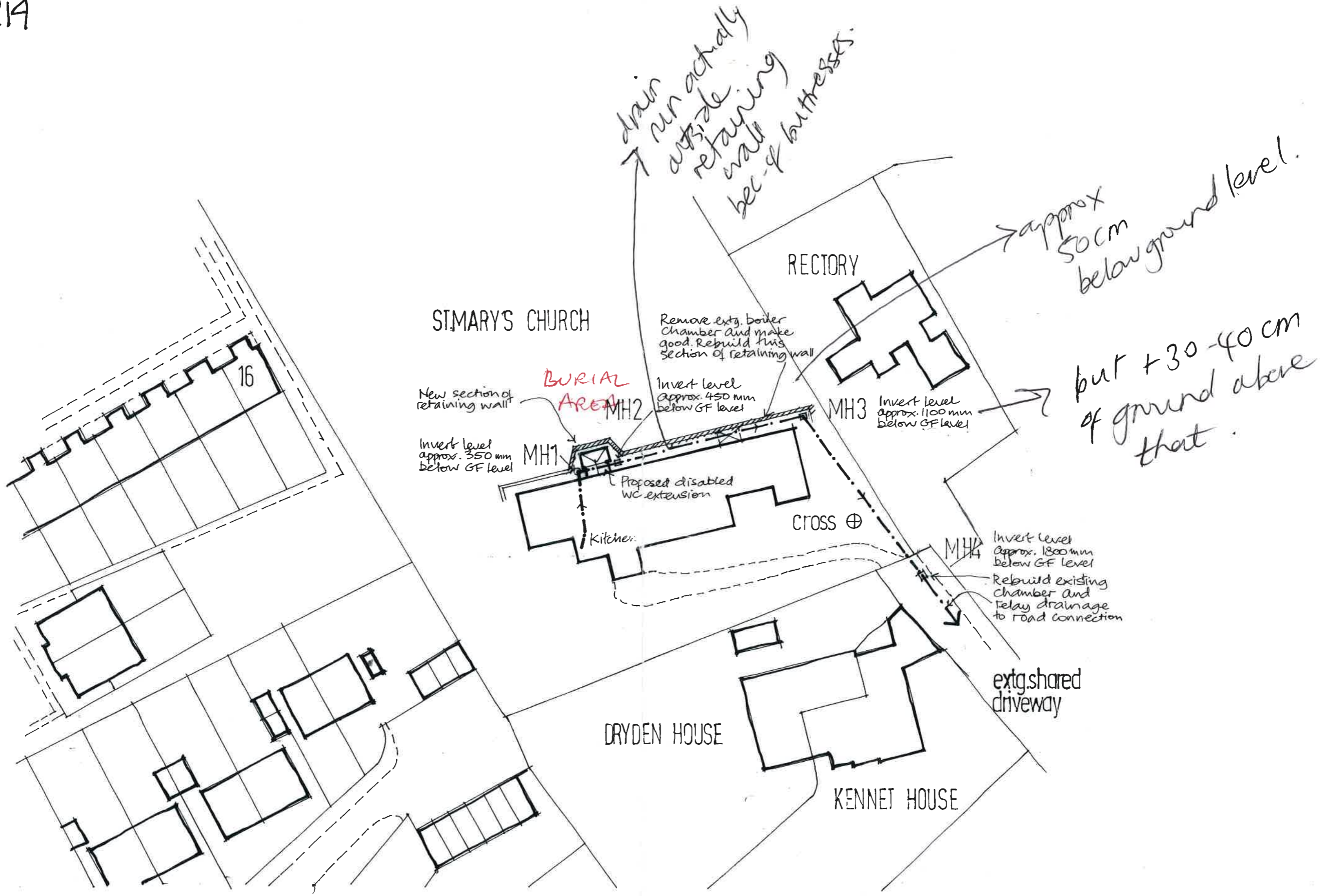
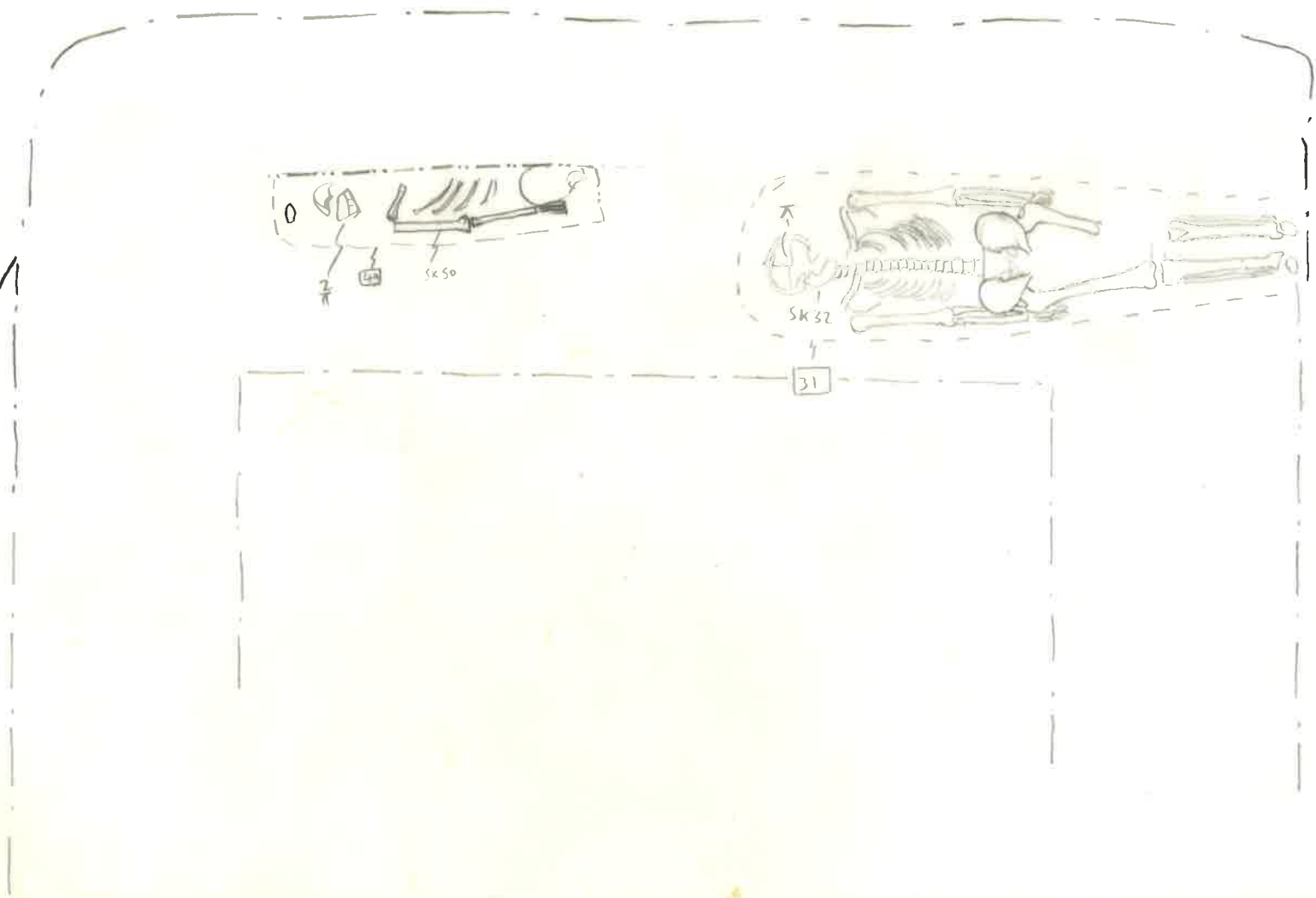


A. Extension amended. January 2014

<p>Subject St. Mary's Church Ambrosden Proposed drainage</p>	<p>Drg./Sk.No 1267 / 5A</p>	<p>PBA Designs Fox Cub Cottage High Street Charlton on Otmoor Kidlington Oxfordshire OX5 2LU Tel./Fax: 01865 331462</p>
---	--------------------------------------	---



<p>Subject St. Mary's Church Ambrosden Proposed drainage</p>	<p>Drg./Sk.No 1267 / 5</p>	<p>PBA Designs Fox Cub Cottage High Street Charlton on Otmoor Kidlington Oxfordshire OX5 2UQ Tel./Fax: 01865 331462</p>
---	-------------------------------------	---



LEVELS

TBM = 67.75

BS = 1.37

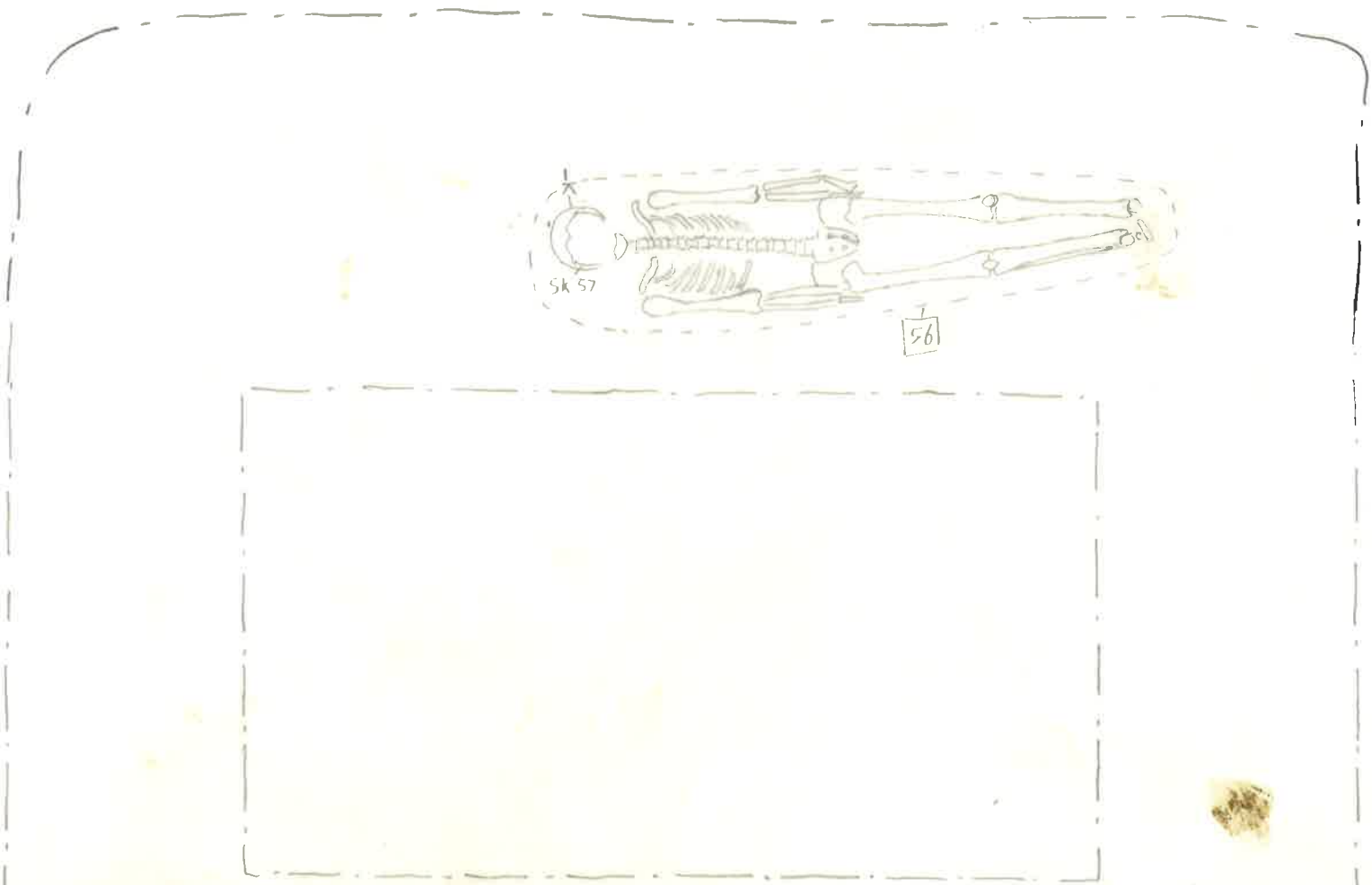
IM = 69.12

$\frac{1}{\Delta} = \frac{FS}{2.87}$

$\frac{2}{\Delta} = 2.85$

$\frac{IL}{66.25}$

66.47



LEVEL

TBM = 67.75

BS = 1.35

14 = 69.14

	<u>FS</u>	
\bar{x}	= 2.96	

	<u>RL</u>
	66.18

PLAN 4
(OVERLAY TO
PLAN 1)

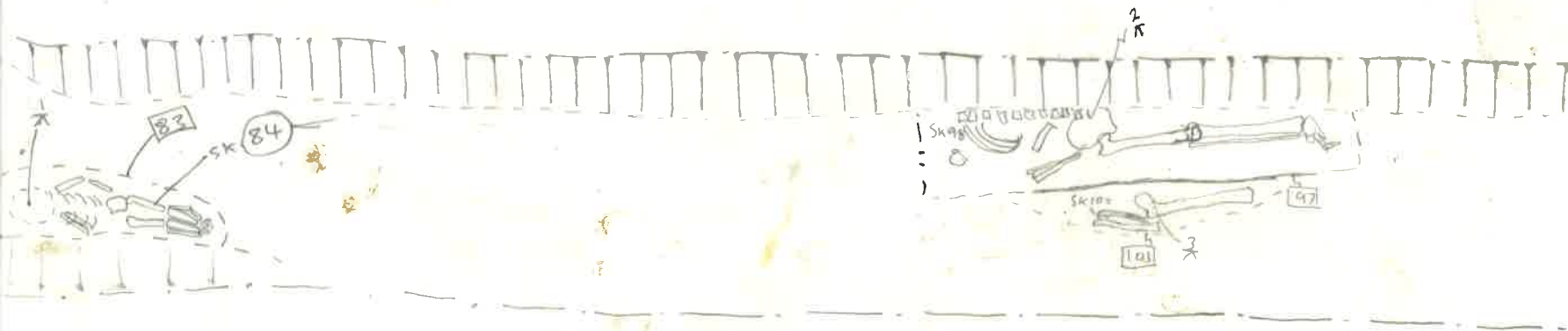


TBM = 66.74

BS = 2.34 IH = 69.06

FS	RL
$\bar{x} = 2.70$	66.38
$\bar{y} = 2.50$	66.39
$\bar{z} = 2.46$	66.43

BS = 2.15 IH = 68.89



4

5

6

7

DP
4.1

DP
4.2

TBM = 66.74
BS = 2.39
IH = 68.93

$\frac{FS}{\lambda} = 2.62$ $\frac{KC}{66.31}$
IH = 68.89

$\frac{2}{\lambda} = 2.55$ 66.34

$\frac{3}{\lambda} = 2.54$ 66.35

$\frac{4}{\lambda} = 2.57$ 66.32



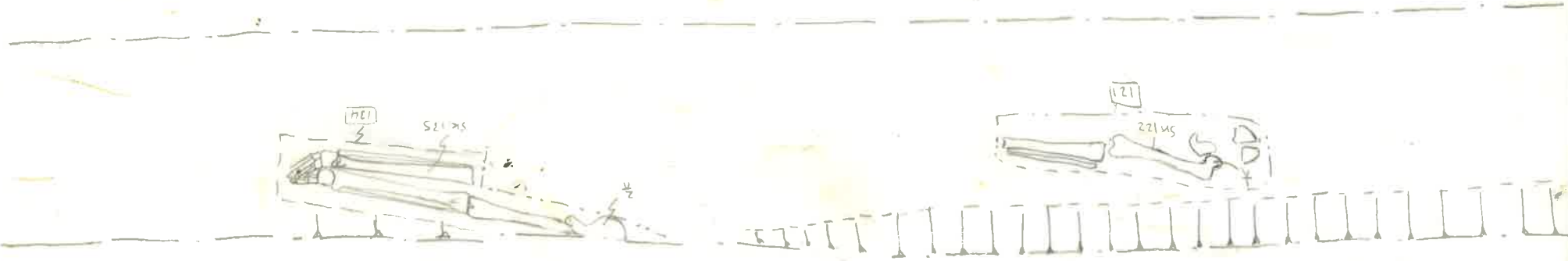
1-
DP
4-1

1-
DP
4-2

2.9
00
+

0.1
00
+

2.56 = 2.56



$\frac{1}{2} = 2.74$
 $\frac{1}{2} = 2.62$
 $\frac{1}{2} = 2.56$
 $\frac{1}{2} = 2.56$
 $1H = 69.01$
 $1H = 66.27$
 $1H = 68.89$
 $1H = 66.711$

PLAN 6

