



NAA

BUILDING RECORDING

VOLUME II: APPENDIX

THIRLEY COATES FARM
HARWOOD DALE
NORTH YORKSHIRE

prepared for
P & G Durbin Properties

Report No: **NAA 19/07**

© NAA January 2019

QUALITY ASSURANCE	
Project Number	1481
Report Number	19-07
Manager	Penny Middleton
Draft	Penny Middleton
Graphics	Damien Ronan
Edit	Frederick Foulds
Authorised	Frederick Foulds
<i>Report sent for client approval</i>	30/01/19

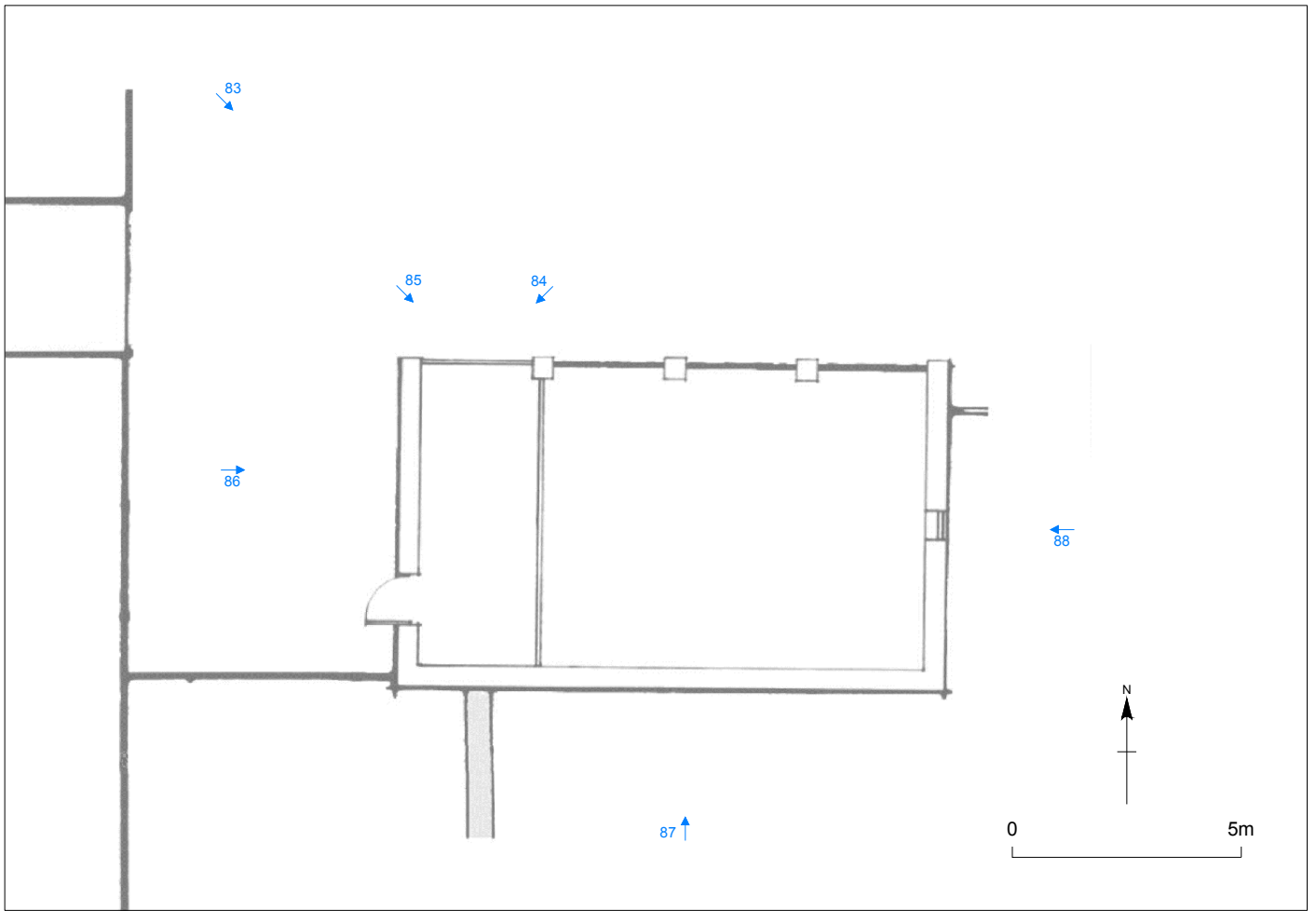
Disclaimer

This document has been prepared in good faith on the basis of information available at the date of publication without any independent verification for the exclusive use and benefit of the named client and for the sole purpose for which it is provided. Northern Archaeological Associates does not guarantee the accuracy, reliability, completeness, or currency of the content of this document nor its usefulness in achieving any purpose. This document is not intended to nor should it be relied upon by any third party. Northern Archaeological Associates accepts no responsibility nor liability should this document be used for any alternative purpose other than for which it is intended nor to any third party. Northern Archaeological Associates will not be liable for any loss, damage, cost, or expense incurred or arising by reason of any person using or relying on information in this document.

Author	Lydia Loopesko, BA, MA (York); Penny Middleton BA(Hons), MA, PGCert (Oxon), MCIfA
Photographs	Penny Middleton BA(Hons), MA, PGCert (Oxon), MCIfA
Illustrations	Kate Chapman, BA (Hons), MA (York); Dawn Knowles BA (Hons)
Client	P & G Durbin Properties
Location	Thirley Cotes Farm, Waite Lane, Harwood Dale, YO13 0DR
District	Scarborough, North Yorkshire,
Planning Ref	NYM/2018/0499/LB, NYM/2018/0247/FL
Grid Ref	SE 97591, 95054
NHL No	1296633
OASIS Ref	northern1-341278
Dates of Fieldwork	9th November 2018







©NAA 2019

Thirley Cotes Farm: cart shed photograph locations

Figure A3

Thirley Cotes Farm, Harwood Dale North Yorkshire

Photographic Catalogue

Image No	Structure/Ro	Context	Direction	Description	Date	Photographer
1	100	110, 111	N	Byre range north wall, horizontal timbers and joist holes	09-Nov-18	PMM
2	100	120, 102, 104,105,107	E	Byre range east wall, horizontal timbers, niche and door	09-Nov-18	PMM
3	100	130	S	Byre Range south wall	09-Nov-18	PMM
4	100	140	W	Byre Range west wall	09-Nov-18	PMM
5	100	106	W	Detail - tack rack	09-Nov-18	PMM
6	100	107	E	Detail - wooden tie	09-Nov-18	PMM
7	100	101, 103	W	West door and lamp niche	09-Nov-18	PMM
8	100	102, 104	E	East door and lamp niche	09-Nov-18	PMM
9	100	108	N	Truss with carpenter's marks	09-Nov-18	PMM
10	200	210, 204	N	Byre north wall with joist holes for feeder	09-Nov-18	PMM
11	200	220, 201	W	Byre west wall	09-Nov-18	PMM
12	200	230	S	Byre south wall	09-Nov-18	PMM
13	200	240, 202, 203	E	Byre east wall	09-Nov-18	PMM
14	200	202, 203	E	Detail of door and lamp niche	09-Nov-18	PMM
15	200	205, 206	E	Detail of two roof trusses	09-Nov-18	PMM
16	200	205, 206	NW	Detail of two roof trusses oblique	09-Nov-18	PMM
17	300	310, 303, 304	N	Byre north wall (slightly blurred)	09-Nov-18	PMM
18	300	320, 302, 305	E	Byre east wall with door and wooden tie	09-Nov-18	PMM
19	300	330	S	Byre south wall (slightly blurred)	09-Nov-18	PMM
20	300	304	N	Detail of fitting for feeder trough	09-Nov-18	PMM
21	300	306	N	Roof truss	09-Nov-18	PMM
22	300	306	NW	Roof truss oblique	09-Nov-18	PMM
23	400	410	NW	Loose box north wall	09-Nov-18	PMM
24	400	410	NE	Loose box north wall	09-Nov-18	PMM
25	400	420, 402	E	Loose box east wall	09-Nov-18	PMM
26	400	430	SE	Loose box south wall	09-Nov-18	PMM
27	400	430	SW	Loose box south wall (slightly blurred)	09-Nov-18	PMM
28	400	440, 402, 403	W	Loose box west wall inc. hay rack and fitting for feeder	09-Nov-18	PMM
29	400	403	N	Loose box details of feeder trough	09-Nov-18	PMM
30	400	401	E	Loose box door	09-Nov-18	PMM
31	500	510	NE	Loose box north wall	09-Nov-18	PMM
32	500	520	E	Loose box east wall	09-Nov-18	PMM
33	500	530	S	Loose box south wall (blurred)	09-Nov-18	PMM
34	500	540, 502, 503	W	Loose box west wall with feeder evidence and hay rack	09-Nov-18	PMM
35	500	501	E	Door detail	09-Nov-18	PMM
36	500	505	SE	Lamp niche detail	09-Nov-18	PMM
37	1000	1010	W	West Range east facing elevation	09-Nov-18	PMM
38	1000	1010	W	West Range east facing elevation - north end	09-Nov-18	PMM
39	1000	1010	W	West Range east facing elevation - central	09-Nov-18	PMM
40	1000	1010	W	West Range east facing elevation - central	09-Nov-18	PMM
41	1000	1010	W	West Range east facing elevation - south end	09-Nov-18	PMM
42	1000	302	W	West Range door detail	09-Nov-18	PMM
43	1000	302	W	West Range door detail - oblique showing latch bars	09-Nov-18	PMM
44	1000	202	W	West Range door detail	09-Nov-18	PMM
46	1000	401	W	West Range loose box door	09-Nov-18	PMM
47	1000	1010, 2500	S	Boundary wall and door between South and West Ranges	09-Nov-18	PMM
48	1000	1200	N	West Range south facing elevation	09-Nov-18	PMM
49	1000	1300	E	West Range west facing elevation	09-Nov-18	PMM
50	1000	1300	E	West Range west facing elevation	09-Nov-18	PMM
51	1000	1300	NE	West Range west facing elevation - south end	09-Nov-18	PMM
52	1000	1200, 601	N	West Range outshot door	09-Nov-18	PMM
53	1000	1300	E	West Range outshot	09-Nov-18	PMM
54	1000	1400	S	West Range outshot end wall	09-Nov-18	PMM
55	1000	1300	E	West Range west facing elevation north end	09-Nov-18	PMM
56	1000	101	E	Detail of door	09-Nov-18	PMM
57	1000	1400	SE	West Range north facing elevation - gable	09-Nov-18	PMM
58	600	602	W	Hayrack in outshot	09-Nov-18	PMM
59	600	601	S	Doorway to outshot	09-Nov-18	PMM
60	2000	2300	S	South Range north facing elevation	09-Nov-18	PMM
61	2000	2300, 2400	SW	South Range north and east facing elevations - oblique	09-Nov-18	PMM
62	2000	2400	W	South Range east facing elevation	09-Nov-18	PMM
63	2000	2500	N	South Range south facing elevation	09-Nov-18	PMM
64	2000	2500	E	Oblique shot of remains of outshot	09-Nov-18	PMM
65	2000	2600	SE	South Range west facing elevation	09-Nov-18	PMM
66	2000	2301	S	Cobbles in front of South Range	09-Nov-18	PMM
67	2000	2301	E	Cobbles in front of South Range	09-Nov-18	PMM
68	2000	2101	SW	Door detail	09-Nov-18	PMM
69	2000	2201	SW	Door detail	09-Nov-18	PMM
70	2000	2202	S	Louvre door detail	09-Nov-18	PMM
71	2100	2110	SW	Byre/stable west wall	09-Nov-18	PMM
72	2100	2110	NW	Byre/stable west wall	09-Nov-18	PMM
73	2100	2120	N	Byre/stable north wall	09-Nov-18	PMM
74	2100	2130-2103	NE	Byre/stable east wall	09-Nov-18	PMM
75	2100	2130-2103	SE	Byre/stable east wall - with feeder trough detail	09-Nov-18	PMM
76	2100	2140	S	Byre/stable south wall	09-Nov-18	PMM
77	2200	2210	NW	Byre/stable west wall	09-Nov-18	PMM
78	2200	2210	SW	Byre/stable west wall	09-Nov-18	PMM
79	2220	2220	N	Byre/stable north wall	09-Nov-18	PMM
80	2220	2230	NE	Byre/stable east wall	09-Nov-18	PMM
81	2220	2230	SE	Byre/stable east wall	09-Nov-18	PMM

82	2220	2240, 2103	S	Byre/stable south wall - detail of feeder trough	09-Nov-18	PMM
83	3000	3200	SE	Cart shed north facing elevation	09-Nov-18	PMM
84	3000	3201	SW	Cart shed - detail of pier	09-Nov-18	PMM
85	3000	3201	SE	Cart shed - detail of pier	09-Nov-18	PMM
86	3000	3500	SE	Cart shed west facing elevation	09-Nov-18	PMM
87	3000	3400	N	Cart shed south facing elevation	09-Nov-18	PMM
88	3000	3300	W	Cart shed east facing elevation	09-Nov-18	PMM
89	Gen	1000, 2000	SW	View of stable and byre lk SW	09-Nov-18	PMM
90	Gen		S	View area bet. house and stable with building footprint visible	09-Nov-18	PMM
91	Gen		SE	View of W gable of house.JPG	09-Nov-18	PMM
92	Gen		S	North facing elevation of house	09-Nov-18	PMM
93	Gen		S	North facing elevation of house and East Range	09-Nov-18	PMM
94	Gen		E	Passage between house and East Range	09-Nov-18	PMM
95	Gen		E	East Range of west facing elevation	09-Nov-18	PMM
96	Gen		SW	East Range north facing elevation of	09-Nov-18	PMM
97	Gen		W	East Range north facing elevation with Cart Shed in view	09-Nov-18	PMM
98	Gen		NW	East Range east facing elevation	09-Nov-18	PMM
99	Gen		SE	East Range and house	09-Nov-18	PMM
100	Gen		NE	North Range south facing elevation east end	09-Nov-18	PMM
101	Gen		NW	North Range south facing elevation east end	09-Nov-18	PMM
102	Gen		W	North Range east facing elevation	09-Nov-18	PMM
103	Gen		S	North Range north facing elevation east end	09-Nov-18	PMM
104	Gen		S	North Range north facing elevation central end	09-Nov-18	PMM
105	Gen		S	North Range north facing elevation central end	09-Nov-18	PMM
106	Gen		S	North Range north facing elevation west end	09-Nov-18	PMM
107	Gen		SE	North Range north facing elevation oblique	09-Nov-18	PMM
108	Gen		SW	North Range extension north facing elevation	09-Nov-18	PMM
109	Gen		SE	North Range extension north facing elevation and main building	09-Nov-18	PMM
110	Gen		E	North Range extension west facing elevation	09-Nov-18	PMM
111	Gen		N	North Range extension north facing elevation	09-Nov-18	PMM
112	Gen		W	House east facing elevation	09-Nov-18	PMM
113	Gen		NW	House oblique south and east facing elevations	09-Nov-18	PMM
114	Gen		N	House south facing elevation	09-Nov-18	PMM
115	Gen		NE	House oblique - south and west facing elevations	09-Nov-18	PMM
116	Gen		NW	View of farmstead from southern approach	09-Nov-18	PMM
117	100	108	N	Roof truss detail -carpenters marks IV	09-Nov-18	PMM
118	200	205, 206	NW	Roof truss detail -carpenters marks III	09-Nov-18	PMM
119	200	205, 206, 204	N	Roof truss detail - carpenters marks III with feeder joists on north wall	09-Nov-18	PMM
120	200	205, 206	NE	Roof truss detail - carpenters marks III	09-Nov-18	PMM
121	200	206	N	Roof truss detail - carpenters marks III	09-Nov-18	PMM
122	300	306	NW	Roof truss detail - carpenters marks II	09-Nov-18	PMM
123	400	405	N	Roof truss detail - carpenters marks I	09-Nov-18	PMM
124	600	610	SW	View of north wall of outshot	Sep-18	CS
125	200	201	W	View of west door of byre	Sep-18	CS
126	200	203	E	Oblique view of niche on E wall	Sep-18	CS
127	200		SE	View of south-east corner of central byre	Sep-18	CS
128	200		NE	View of north-east corner of central byre	Sep-18	CS
129	200	108	N	View of trusses in byre	Sep-18	CS
130	200		NW	View of north-west corner of central byre	Sep-18	CS
131	200		NW	View of north-west corner of central byre	Sep-18	CS
132	200	201	W	West elevation of room byre	Sep-18	CS
133	100	104	E	East niche and door of north byre	Sep-18	CS
134	100	103	SW	Oblique view of niche on west wall	Sep-18	CS
135	100		SE	View of south-east corner of north byre	Sep-18	CS
136	100		SE	View of south-east corner of north byre	Sep-18	CS
137	100	111	NE	view of north-east corner of north byre	Sep-18	CS
138	100	111	NW	View of byre stalls in north-west corner	Sep-18	CS
139	100		SW	View of south-west corner of north byre	Sep-18	CS
140	100		SW	View of south-west corner of north byre	Sep-18	CS
141	2700	2701	S	View of wall between south and west range	Sep-18	CS
142	2000	2300	SE	View of north elevation of stable/byre	Sep-18	CS
143	2000	2300	S	North elevation of stable/byre	Sep-18	CS
144	2000		SW	North elevation of stable/byre	Sep-18	CS
145	Gen		W	View of the courtyard and the east elevation of the west range	Sep-18	CS
146	Gen		S	Oblique view of the west elevation of east range and the farmhouse	Sep-18	CS
147	Gen		SE	View of the north elevation of farmhouse and south end of east range	Sep-18	CS
148	Gen		NE	View of the courtyard and the main barn and east range	Sep-18	CS
149	Gen		SE	View of courtyard and east range and farmhouse	Sep-18	CS
150	Gen		N	South elevation of main barn and courtyard	Sep-18	CS
151	Gen		SW	View of courtyard with west and south range	Sep-18	CS
152	Gen		NE	View of south elevations of south range and farmhouse	Sep-18	CS
153	1000	1200	N	View of south elevation of west range	Sep-18	CS
154	Gen		NW	Oblique view of south elevation south and west range	Sep-18	CS
155	Gen		E	West elevation of farmhouse	Sep-18	CS
156	Gen		N	South elevation of farmhouse	Sep-18	CS
157	Gen		W	East elevation of farmhouse	Sep-18	CS
158	Gen		NW	Oblique view of south end of east elevation of east range	Sep-18	CS
159	3000	3200	SE	Oblique view of north elevation of cart shed	Sep-18	CS
160	Gen		SW	Oblique view of north end of east elevation of east range	Sep-18	CS
161	Gen		SW	Oblique view of main barn from the north east	Sep-18	CS
162	Gen		SE	North elevation of barn extension	Sep-18	CS
163	Gen		N	South elevation of barn extension	Sep-18	CS
164	Gen		NE	View of south elevation of west range and west elevation of farmhouse	Sep-18	CS
165	1000	1300	E	West elevation of west range	Sep-18	CS

166	1300	101	S	Oblique view of door to north byre and north elevation of outshot	Sep-18	CS
167	1300	101	E	North end of west elevation of west range	Sep-18	CS
168	1300	301	E	South end of west elevation of west range	Sep-18	CS
169	1300	600	NE	Oblique view of west elevation of west range and outshot	Sep-18	CS
170	600	602	SE	View of out the outshot and the truss over the door	Sep-18	CS
171	2200	2204	NW	View of north-west corner of east stable/byre and hayrack	Sep-18	CS
172	2200		N	North wall of east stable/byre	Sep-18	CS
173	2200		SW	South-west corner of east stable/byre	Sep-18	CS
174	2100	2106	E	Upper section of east wall of west stable/byre	Sep-18	CS
175	2100	2101	N	North wall of west stable/byre	Sep-18	CS
176	2100		SW	South-west corner of west stable/byre	Sep-18	CS
177	500	506	S	East wall of south loosebox	Sep-18	CS
178	500		SE	South-east corner of south loosebox	Sep-18	CS
179	500		NW	North-west corner of south loosebox	Sep-18	CS
180	400	404	S	Niche on south wall of north loosebox	Sep-18	CS
181	400	405	S	Window of former hayloft in wall between north and south loosebox	Sep-18	CS
182	400		W	West wall of north loosebox	Sep-18	CS
183	300	108	SE	South-east corner and truss of south byre	Sep-18	CS
184	300		SW	South-west corner and truss of south byre	Sep-18	CS
185	300		SE	South-east corner and truss of south byre	Sep-18	CS
186	300		NE	North-east corner of south byre	Sep-18	CS
187	300		NW	North-west corner of south byre	Sep-18	CS
188	Gen		S	North elevation of west end barn	Sep-18	CS
189	Gen		S	North elevation of east end barn	Sep-18	CS
190	Gen		SW	View of north elevation of cartshed and east elevation of barn	Sep-18	CS
191	Gen		W	View of east elevation of farmhouse and east range	Sep-18	CS
192	3000		NW	South and east elevation of cartshed	Sep-18	CS
193	1010	102	W	Exterior of north door of east elevation of west range	Sep-18	CS
194	100	108	NE	North truss of west range	Sep-18	CS
195	100	108	N	North truss of west range	Sep-18	CS
196	100	108	N	North truss of west range	Sep-18	CS
197	100	108	N	North truss of west range	Sep-18	CS
198	100	105	E	Tie in north-east corner of north byre	Sep-18	CS
199	600	201	E	View of door on east wall of outshot	Sep-18	CS
200	600	201	E	View of door on east wall of outshot	Sep-18	CS
201	600		N	South elevation of outshot	Sep-18	CS
202	1300	101	E	North door of west elevation	Sep-18	CS
203	Gen		W	East elevation of barn extension	Sep-18	CS
204	1000	1400	SE	Oblique view of north elevation of west range	Sep-18	CS
205	Gen		NE	Oblique view south elevation of barn and extension	Sep-18	CS
206	Gen	1010	NW	View of north corner of east elevation of west range and barn attached	Sep-18	CS
207	Gen	1010	N	Oblique view of east elevation of west range and south elevation of barn	Sep-18	CS
208	Gen		N	East end of south elevation of barn	Sep-18	CS
209	2400		W	East elevation of south range	Sep-18	CS
210	Gen		E	View down alley between east range and farmhouse	Sep-18	CS
211	Gen		SE	View of south and west elevations of farmhouse	Sep-18	CS
212	Gen		S	View of north elevation of farmhouse	Sep-18	CS
213	Gen		SE	Oblique view of north elevation of east range	Sep-18	CS
214	Gen		SE	Oblique view of north end of west elevation of east range	Sep-18	CS
215	3000	3300	NE	View of west and south elevation of cartshed	Sep-18	CS
216	3000	3300	NE	View of west and south elevation of cartshed	Sep-18	CS
217	3000	3100	NW	North-west corner of cartshed	Sep-18	CS
218	3000	3100	SW	West wall and south-west corner of cartshed	Sep-18	CS
219	3000	3500	E	West elevation of cartshed	Sep-18	CS
220	3000	3100	SE	South-east corner of cartshed	Sep-18	CS
221	3000	3101	E	East wall and truss of cartshed	Sep-18	CS
222	3000	3100	NW	View of north-west corner of cartshed	Sep-18	CS
223	3000	3100	SW	View of south-west corner of carner	Sep-18	CS



001_100_110_N_elev



002_100_120_E_elev



003_100_130_S_elev



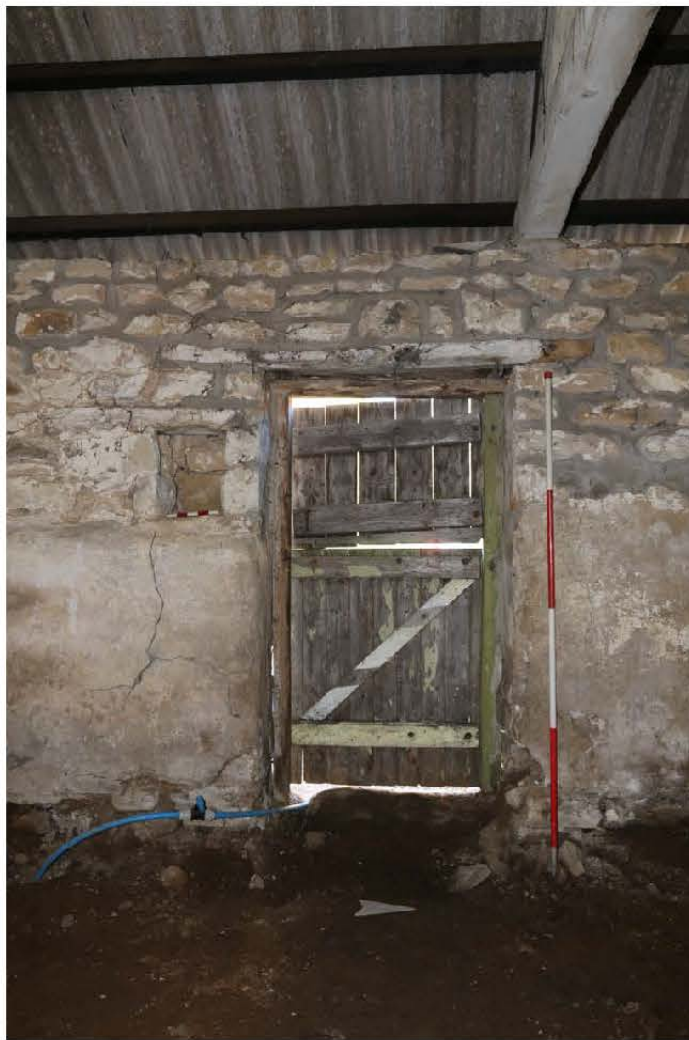
004_100_140_W_elev



005_100_106-wooden tie and tack hook



006_100_107-wooden tie



07_100_101 and 103-W_door



008_100_102-104_E_door



009_100_108_truss ik N°



010_200_210_N_elev



011_200_220_W_elev



012_200_230_S_elev



013_200_240_E_elev



014_200_202-203_E_door



015_200_205-6_trusses_lk_N



016_200_205-6_trusses_lk_NW



017_300_310_N_elev



018_300_320_302-305_E_elev



019_300_330_S_elev



020_300_301_evidence of feeding trough



021_300_306_fk_I



022_300_306_fk_NW_lathes



023_400_410_N_elev_1k_NW



024_400_410_N_elev_1k_NE



025_400_420_E_elev



026_400_410_S_elev lk SE



027_400_440_S_elev lk SW



028_100_110_W_elev



029_400_403_feeding trough fittings



030_100_101_E_door



031_500_510_N_elev_1k_NE



032_500_520_E_elev



033_500_530_S_elev_1k_SW



034_500_510_W_elev



035_500_501_E_door



036_500_505_lamp niche SE corner



037_1010_EF_elev



038_1010_EF-elev_N_end



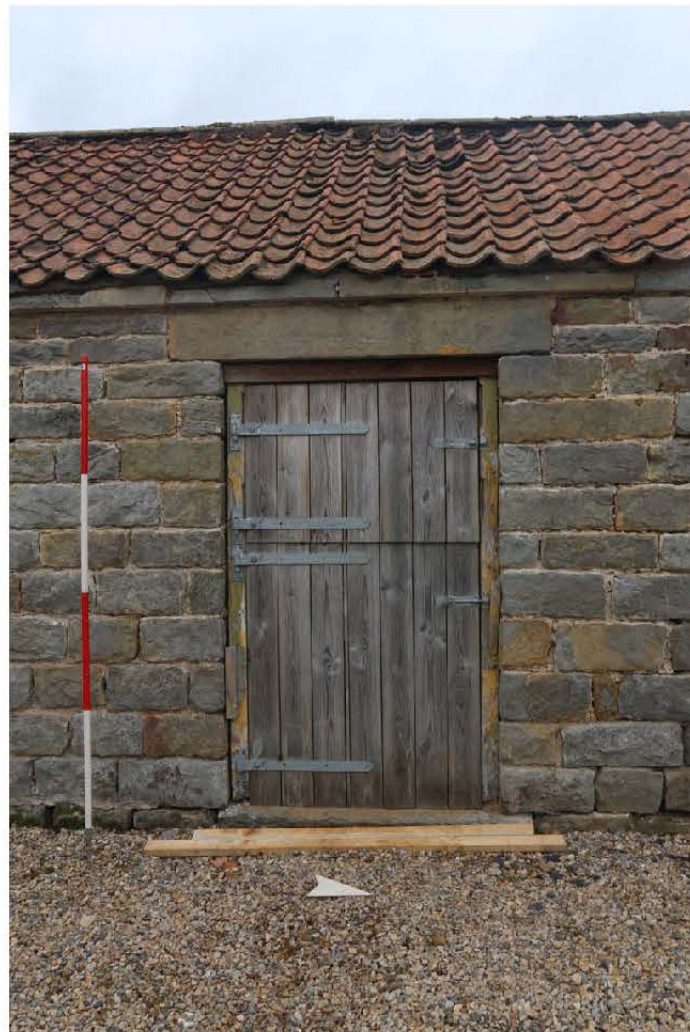
039_1010_EF-elev_central



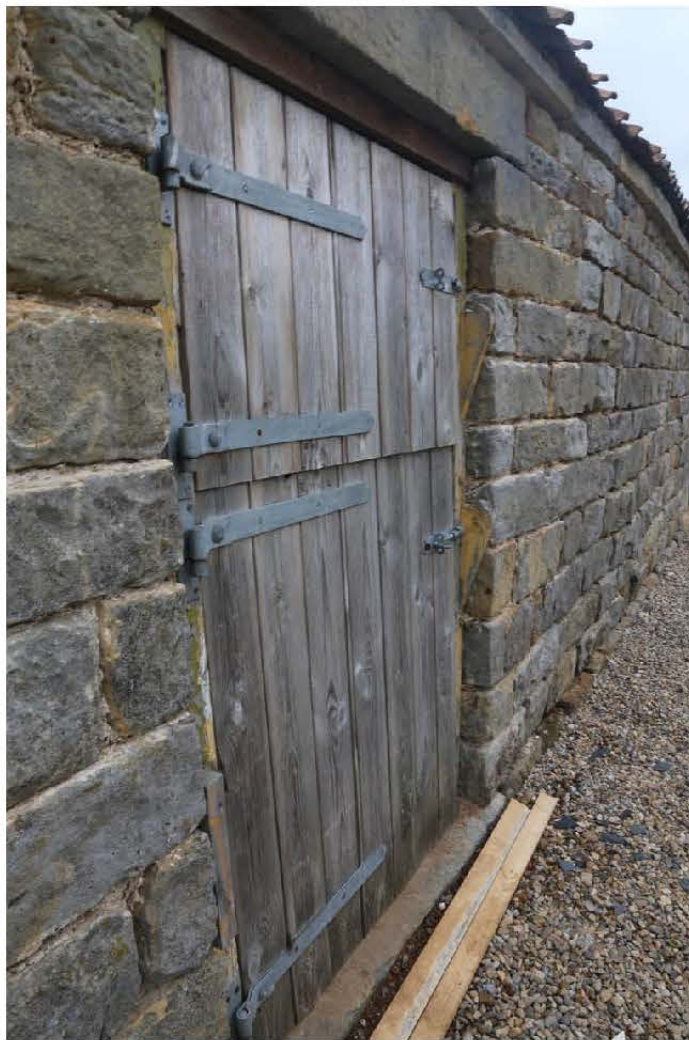
040_1010_EF-elev_central



041_1010_EF-elev_S_end



012_1010_302 EF-elev_door



043_1010_302 EF-elev_door oblique



044_1010_202 EF-elev_door oblique



046_1010_501 EF-elev_door



047_1050_boundary wall and door



048_1000_1200_SF_elev



019_1000-1300_WF_elev



050_1000-1300_WF_elev



051_1000-1300_WF_elev_S_end



052_1000-1200_SF_outshot-600



053_1000-1300_WF_outshot-600



054_1000-1400_NF_eiev_outshot_600



055_1000-1300_WF_N_end



056_1000-1300_WF_N_end_door



057_1000-1400_NE_elev



058_600_outshot interior lk NW



059_600_outshot interior lk S



060_2000_2300_NF_elev



061_2000_1k_SW



062_2000_2400_EF_elev



063_2000_-2500_SF_elev



064_2000_2500_oblique outshot remains



065_2000_2600_WF_elev



066_2000_2301_cobbles



067_2000_2301_cobbles



068_2000_2101_door



069_2000_2201_door



070_2000_2202_window



071_2000_2110_W_elev lk SW



072_2000_2110_W_elev_jk_NW



073_2000_2120_N_elev



074_2000_2130_E_elev ik NE



075_2000_2130-2103_E_elev ik SE



076_2130_S_elev



077_2000_2210_W_elev ik NW



078_2000_2210_W_elev lk SW



079_2000_2220_N_elev



080_2000_2230_E_elev lk NE



081_2000_2230_E_elev lk SE



082_2000_2240-2103_trough W wall



083_3000_3200_N_elev



084_3000_3201_brick_pier_detail



085_3000_3201_brick_pier_detail



086_3000_3500_WF_elev



087_3000_3400_SF_elev



088_3000_3300_EF_elev



089_Gen_view of stable and byre ll. SW



090_Gen_view area bet. house and stable - building footprint lk SW



091_Gen_view of W gable of house lk SW



092_Gen_view - NF elev of house



093_Gen_view - NF elev of house and E range



094_Cen_view - passgae bet house and E Range.



095_Cen_view - WF elev of E range



096_Gen_view - NF elev of E range



097_Gen_view - NF elev of E range with cart shed



098_Gen_view - EF elev of E range



099_Gen_view - of E range and house lk SE



100_Gen_view - SF elev of N Range-E end lk NE



101_Gen_view - SF elev of N Range-W end lk NW



102_Gen_view - EF elev of N range



103_Cen_view - NF elev of N range E end



104_Gen_view-NF elev of N range central



105_Gen_view-NF elev of N range central



106_Gen_view -NF elev of N range West



107_Gen_view -NF elev of N range oblique ll. SE



108_Gen_view -NF elev of N range ext



109_Gen_view -NF elev of N range and Ext Bk SE



110_Gen_view-WT elev of N range Ext



111_Gen_view-SF elev of N range Ext



112_Cen_view -WF elev of house



113_Cen_view of house oblique lk NW - East gable



114_Gen_view -SE - front elev of house



115_Gen_view of house oblique lk NE



116_Gen_view_of_approach from the south



117_100-roof detail_carpenters marks IV- 100



118_200_roof detail_carpenters marks III 200 and purlins



119-200_roof detail_carpenters marks III 200 both trusses and 201



120_200_roof detail_carpenters marks III 200 lk NE



121_200_roof detail_carpenters marks III 200



122_300_roof detail_carpenters marks II 300



123_roof detail_carpenters marks I 400



124_600_610_n_elev



125_200_201_k_w



126_200_203_fk_I



127_200_se_comer



128_200_ne_corner



129_200_108_1k_n



130_200_jk_mv



131_200_pw_corner



132_200_201_west_elev



133_100_101_k_e



134_100_103_fk_svr



135_100_fk_se



136_100_fk_se



137_100_111_fk_ne



138_100_111_fk_sw



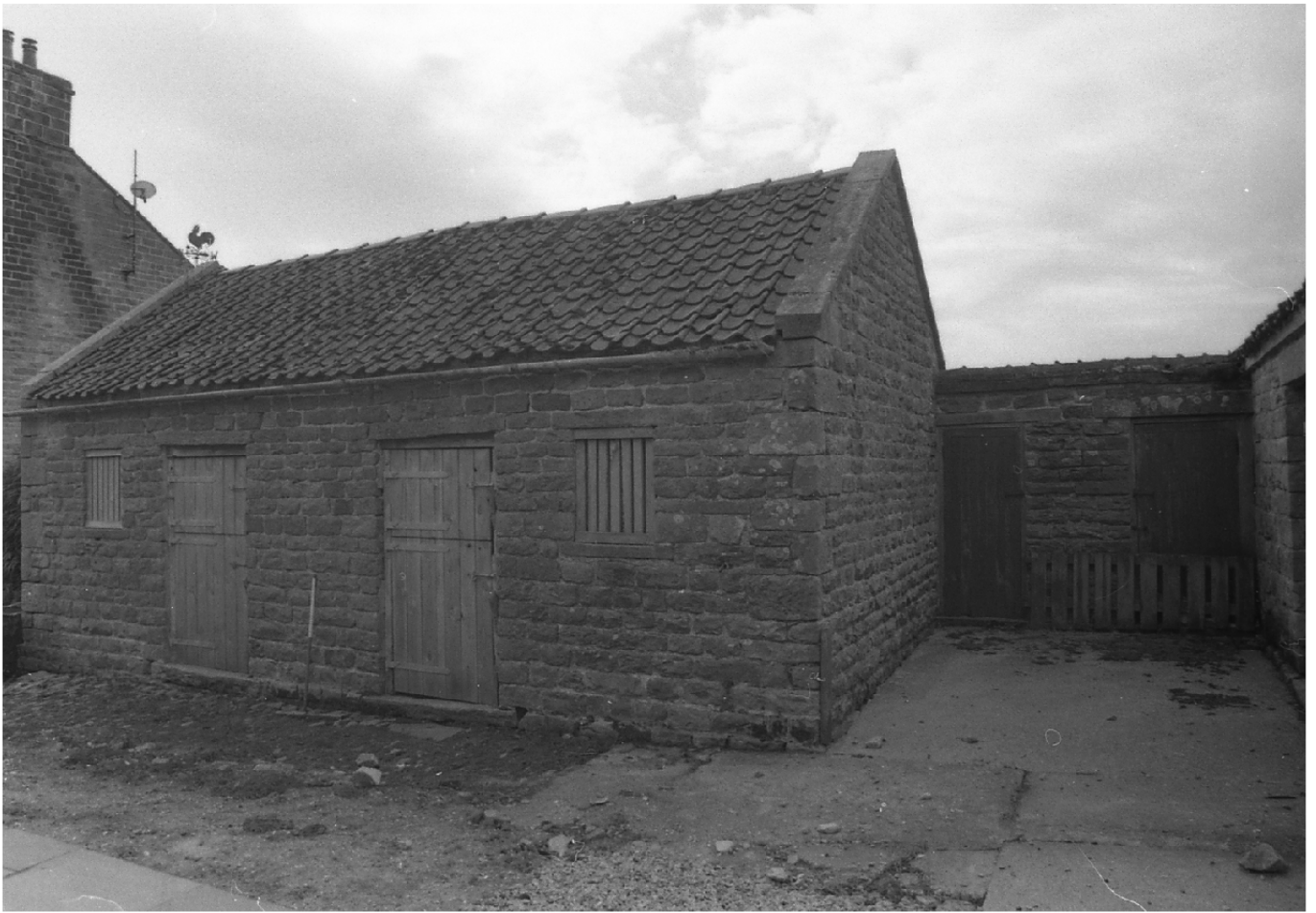
139_100_fk_sw



140_100_1k_sv



141_2700_2701_1k_s



142_2000_2300_north_elev_1k_se



143_2000_2300_1k_s



144_2000_jk_sw



115_gen_view_west_range_jk_w



146_gen_view_farmhouse_1k_s



147_gen_farmhouse_1k_se



148_gen_view_courtyard_1k_ne



149_gen_view_farmhouse_e_range_1k_se



150_gen_view_barn_s_elev_lk_n



151_gen_view_courtyard_lk_sw



152_gen_view_s_range_farmhouse_!k_ne



153_1000_1200_!k_n



154_gen_view_s_range_lk_nw



155_gen_view_farmhouse_lk_e



156_gen_view_farmhouse_s_elev_lk_n



157_gen_view_farmhouse_lk_w



158_gen_view_east_range_e_elev_ik_nw



159_3000_3200_n_elev_ik_se



160_gen_view_east_range_ik_sw



161_gen_view_barn_w_elev_ik_sw



162_gen_view_barn_ext_ik_se



163_gen_view_barn_ext_ik_n



164_gen_view_west_range_lk_ne



165_1000_1300_w_elev_lk_e



166_1300_101_1k_s



167_1300_101_1k_e



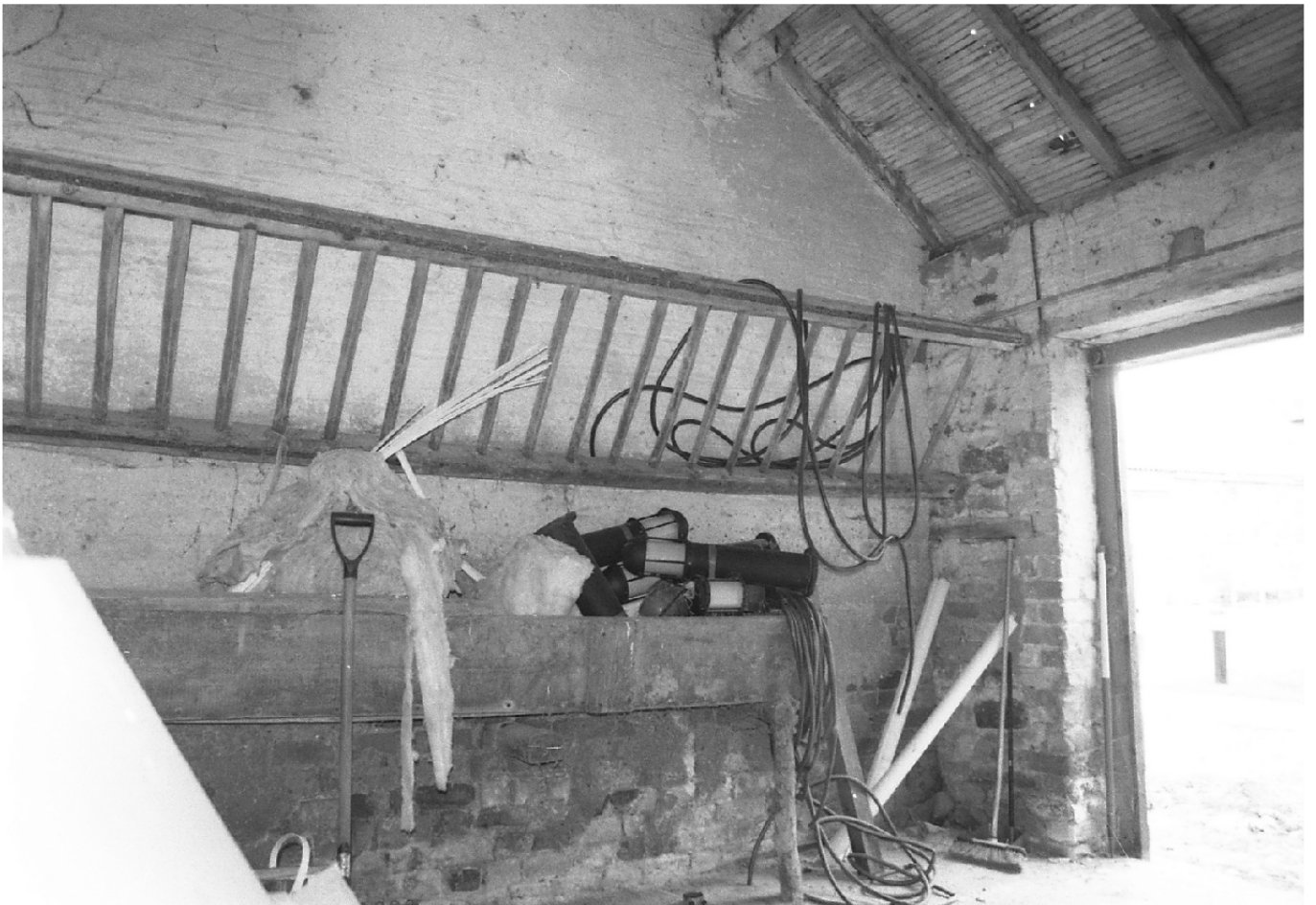
168_1300_301_1k_e



169_1300_600_1k_ne



170_600_602_ik_se



171_2200_2201_w_elev_ik_mv



172_2200_n_elev_ik_n



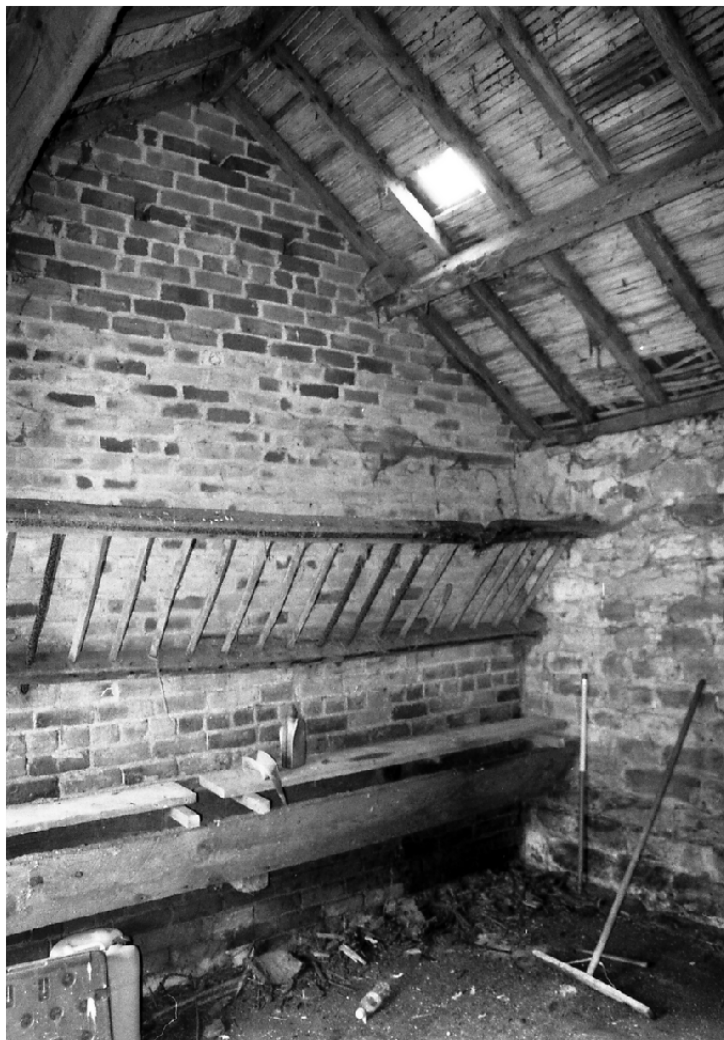
173_2200_ik_sw



174_2100_2106_e_elev_lk_e



175_2100_2101_lk_n



176_2100_sw_corner_1k_sw



177_500_506_s_elev



178_500_ik_se



179_500_ik_mw



130_400_404_ik_s



181_100_105_ik_s



182_400_jk_vv



183_300_108_jk_se



184_300_jk_sw



185_300_jk_se



186_300_ik_re



187_300_ik_mw



188_gen_view_barn_n_elev_1k_s



189_gen_view_barn_n_elev_1k_s



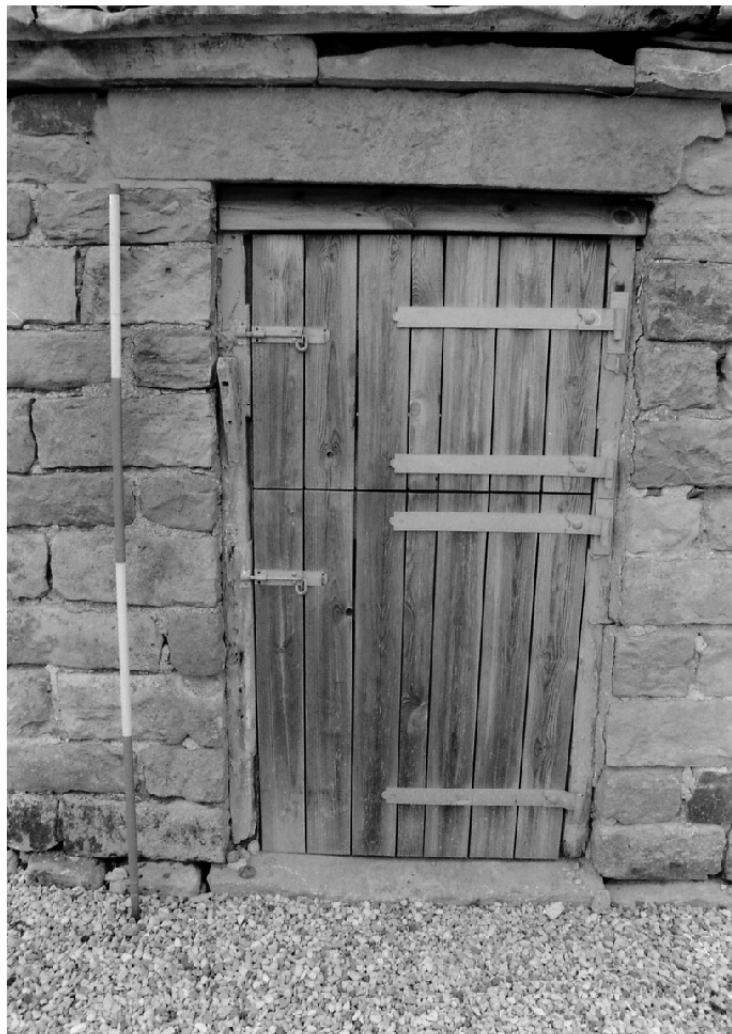
190_3000_gen_view_lk_sw



191_gen_view_east_range_lk_w



192_3000_fk_nv



193_1010_102_fk_w



194_100_108_ik_ne



195_100_108_ik_n



196_100_108_fk_n



197_100_108_fk_n



198_100_105_fk_e



199_600_201_fk_e



200_600_201_fk_e



201_600_ik_n



202_1300_101_1k_e



203_gen_view_barn_ext_1k_w



204_1000_1400_ik_se



205_gen_view_barn_ext_ik_ne



206_gen_view_1010_lk_mv



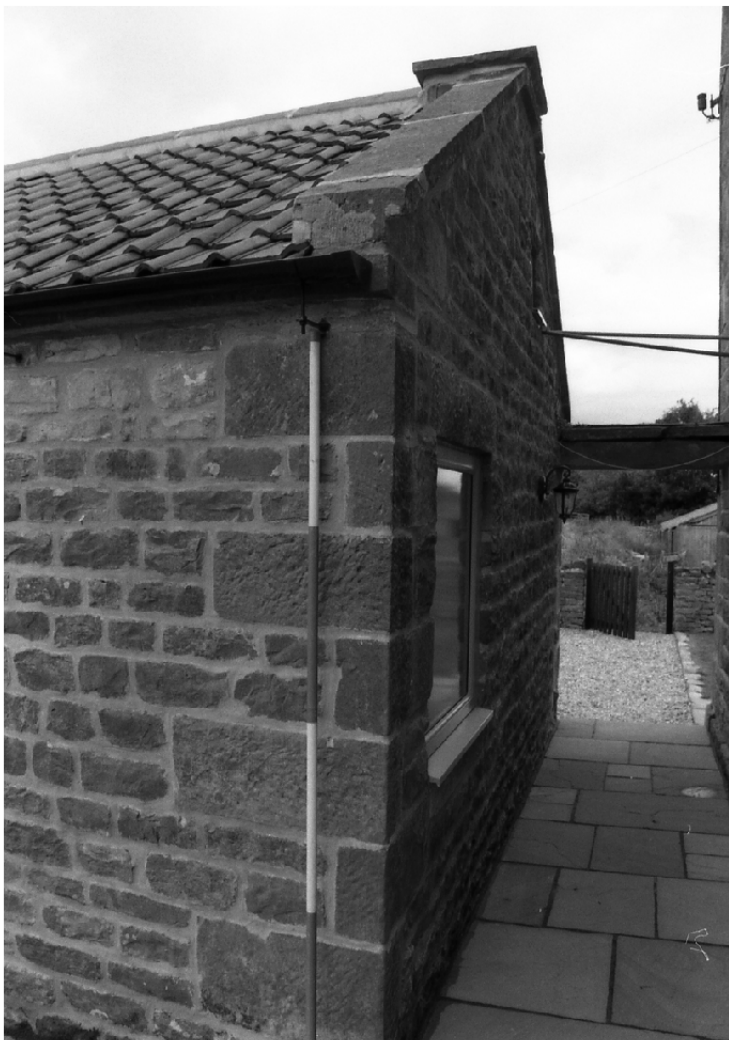
207_gen_view_1010_obliqu_lk_n



208_gen_view_barn_ik_n



209_2/00_ik_w



210_gen_view_alley_ik_e



211_gen_view_farmhouse_lk_se



212_gen_view_jamhouse_1k_s



213_gen_view_east_range_1k_se



214_gen_view_east_range_lk_se



215_3000_3300_lk_ne



216_3000_ik_ne



217_3000_3100_ik_mv



218_3000_3100_ik_sv



219_3000_3500_ik_e



220_3000_3100_lk_se



221_3000_3101_lk_e



222_3000_3100_ik_mv



223_3000_3100_ik_sw