

2. Please bring this Notice with you to the Meeting.
 N.B.—1. Nominations for any of the posts under item 3 of the Agenda should be made in writing to the Secretary prior to the meeting, and the assent of the nominee should be first obtained.

- 4. Other competent persons **1 Bulletin**
- 5. Appointment of Auditor for 1930 Accounts.
- 6. Election of Medical Officers (Rule 25-17) **1 5"**

(d) Nine Commissioners (Messrs. I. G. Brock, C.B. (Lord of Council), G. Cassar, A.M.I.N.A. (Admiralty), Sir J. H. E. Woods (Treasury) are eligible and offer themselves for re-election.

(c) Treasurer (At present Mr. D. B. WOODBURN, Treasury, occupies the post and is willing to continue.)
 (b) H. H. JAMES, Customs & Excise, occupies the post and is willing to continue. **3 Bulletins (2 marked 1 any)**

(d) Actuary (At present Mr. P. N. Harvey, Government Actuary's Department, acts in that capacity and is willing to continue.) **3 Bulletins**

(c) Finance Treasurer (At present Mr. J. M. B. M.B. are willing to act in this capacity.) **1 Bulletin**

(b) Election of Officers and Committee (At present Mr. J. Ramsay, K.C.B., acts as table to continue in this office.) **1 Key**

2. Report and Accounts for the year ended 31st December, 1929.
 3. Election of Officers and Committee. **3, 2 1/2, 4, 5"**

4. Report of the Committee on 18th December, 1929. **1 1/2 on right side.**

5. Report of the Committee on 18th December, 1929. **1 shoe with lace pattern.**

6. Report of the Committee on 18th December, 1929. **1 shoe with lace pattern.**

7. Report of the Committee on 18th December, 1929. **1 shoe with lace pattern.**

8. Report of the Committee on 18th December, 1929. **1 shoe with lace pattern.**

9th March 1930.

LONDON, W.C.2.

ROOMS 408/407

THE ASSOCIATION

MEMBERS

MEMBERS

MEMBERS

MEMBERS

MEMBERS

MEMBERS

MEMBERS

MEMBERS

MEMBERS

MEMBERS

MEMBERS

MEMBERS

MEMBERS

MEMBERS

MEMBERS

MEMBERS

MEMBERS

MEMBERS

MEMBERS

MEMBERS

MEMBERS

MEMBERS

MEMBERS

MEMBERS

MEMBERS

MEMBERS

MEMBERS

MEMBERS

MEMBERS

MEMBERS

MEMBERS

MEMBERS

MEMBERS

MEMBERS

MEMBERS

MEMBERS

MEMBERS

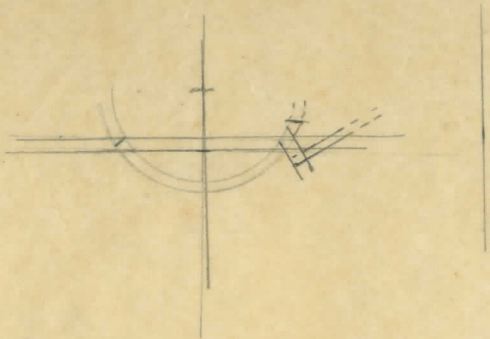
MEMBERS

MEMBERS

MEMBERS

MEMBERS

MEMBERS



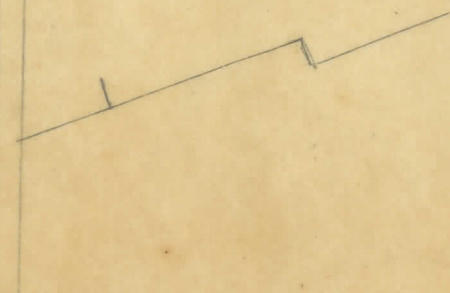
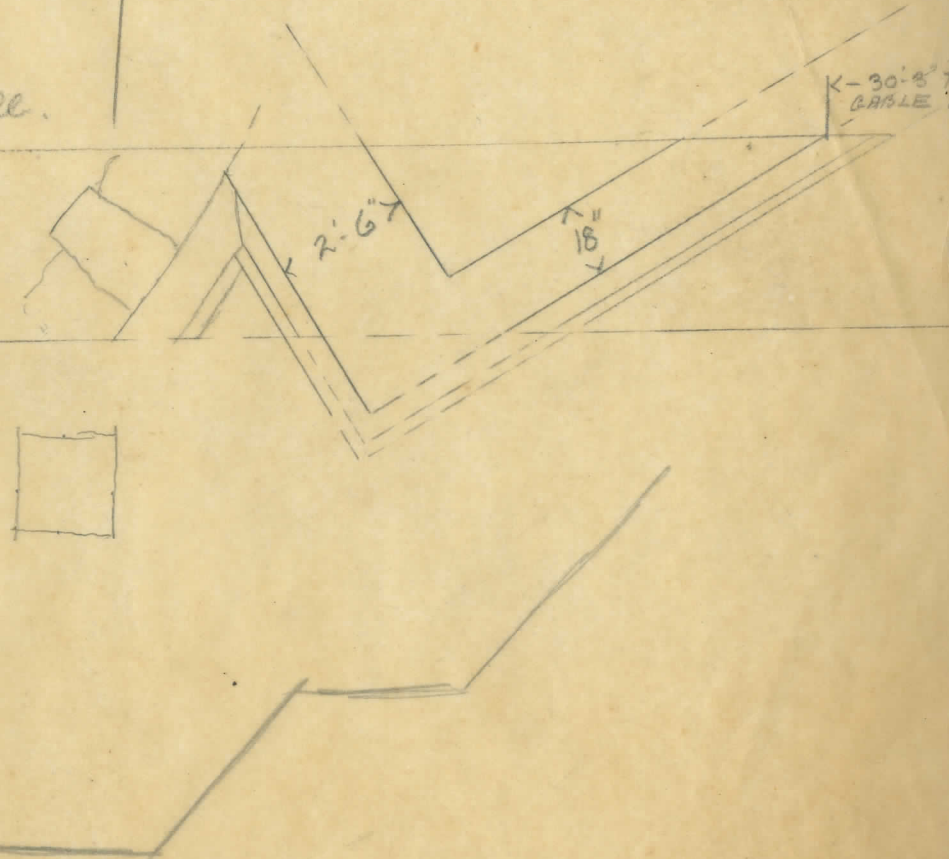
40/3 39/3 37/10 36/1 34/3 31/3

Building line back wall.

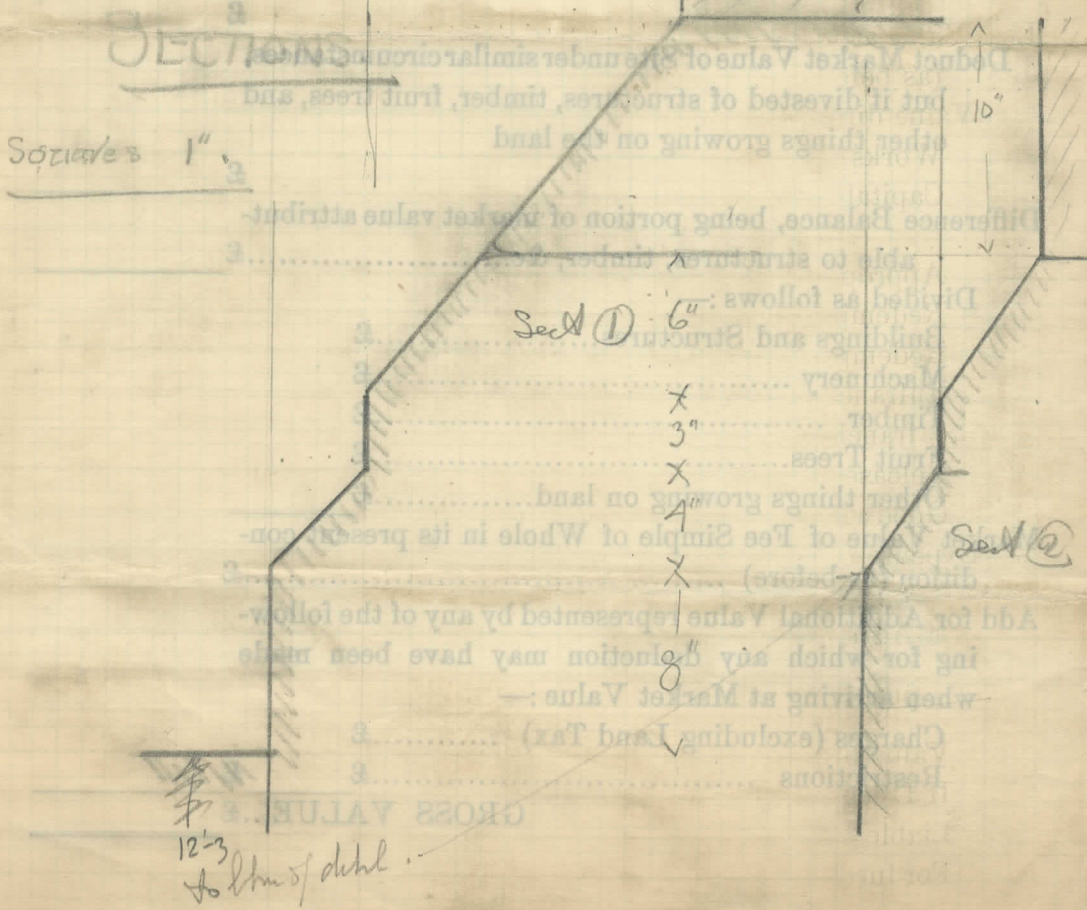
K-30° to
CABLE

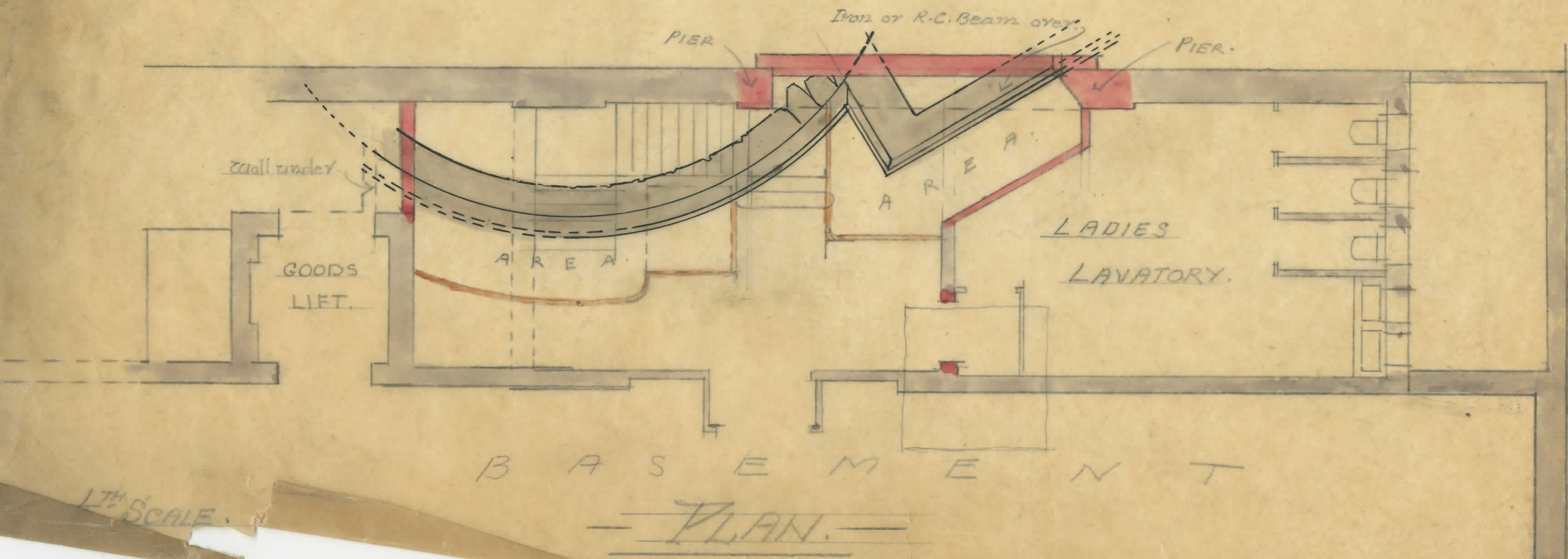
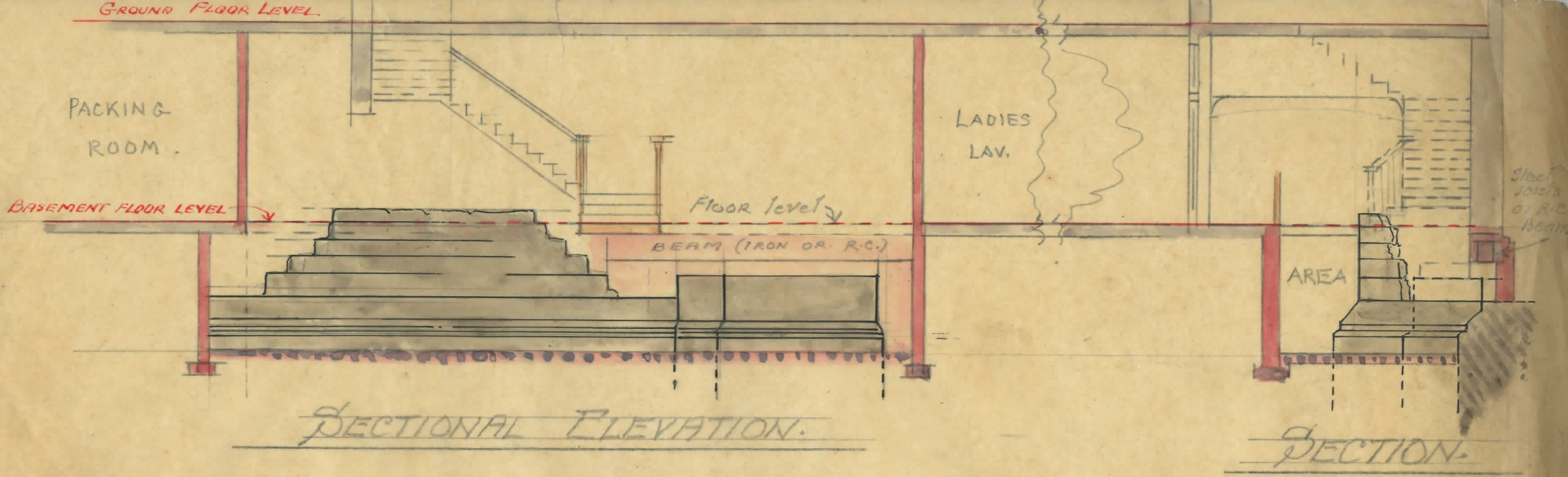
20° 15'
1/1 1/2
3/7 1/2
5/4
6/9
8/2

1/4" Scale.



Index Letter	Description of Buildings	Dimensions			Cubical Contents	Condition	Remarks
		Frontage	Depth	Height			
	$\begin{array}{r} 12-3 \\ 2-2 \\ \hline 14-9 \\ 8 \\ \hline 14 \end{array}$ <p>CASTLE.</p> <p>BASE COURSES.</p> <p>Oct. 11/27</p>		$\begin{array}{r} 14-6 \\ 16-0 \\ \hline 30-6 \end{array}$				





1/4" SCALE.

A Leslie Brantley
P.E. B.S.A.