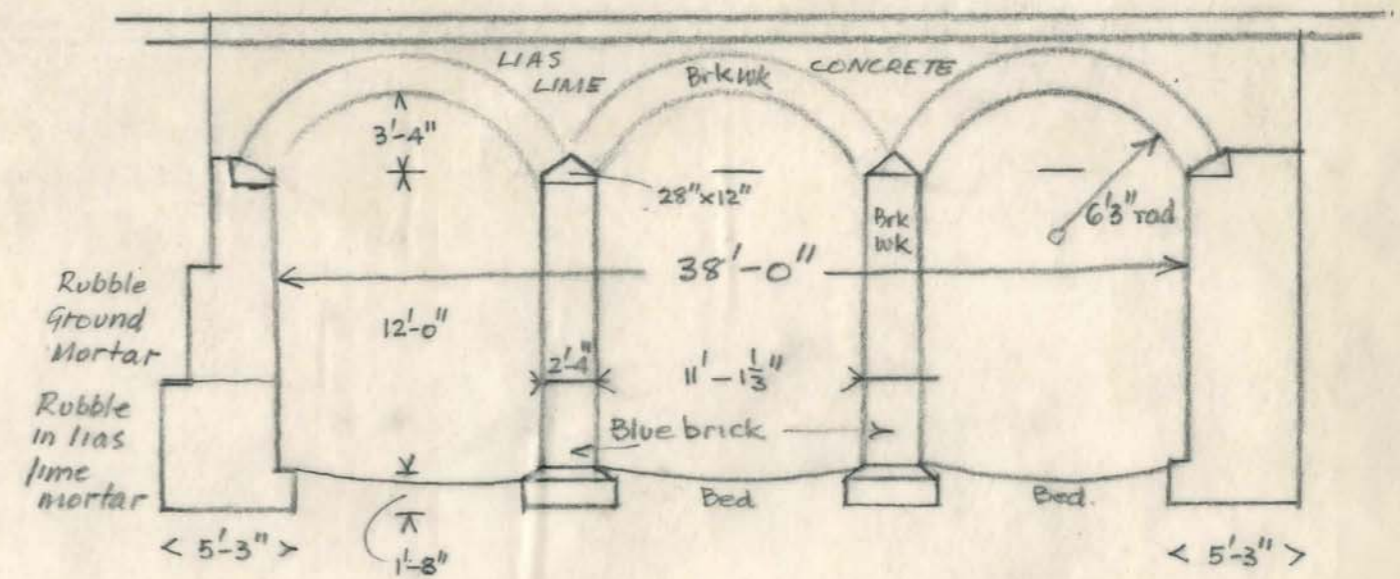
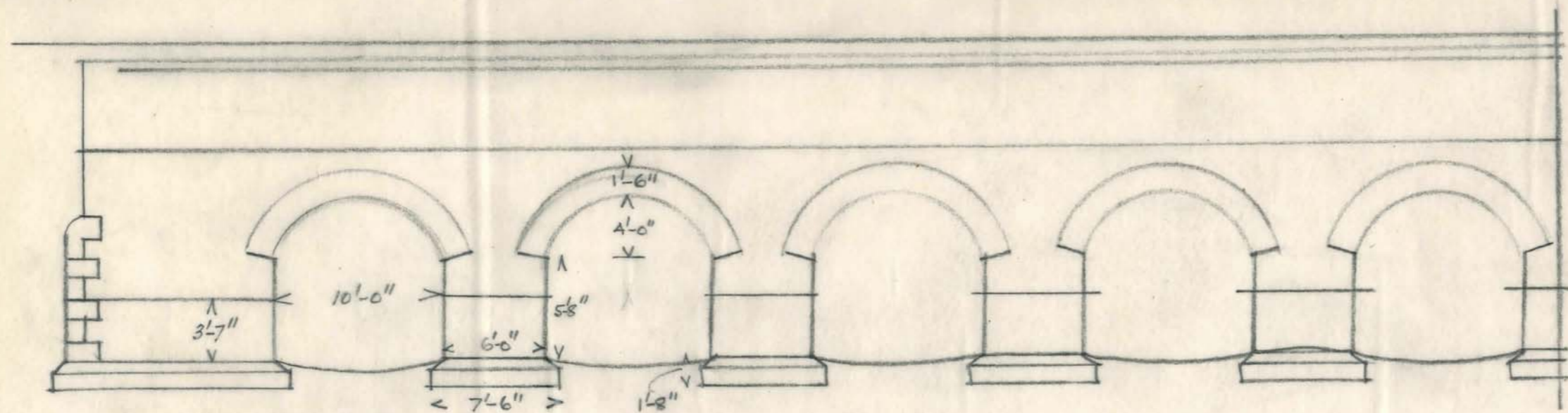


Details of culvert over R. Sheaf downstream from
Pond Hill. April 1893



Abstracted from C.E's drg.
 No D/144/12/19.

SCALE. 1 INCH = 8 FEET.

J.L. WOMERSLEY F.R.I.B.A., M.T.P.I.
CITY ARCHITECT
SHEFFIELD.