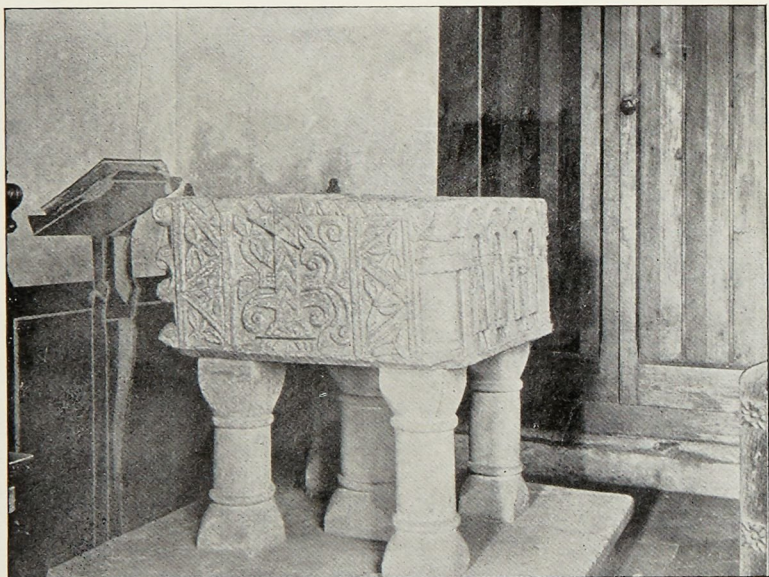


Additional Note on Breccles Font, Attleborough.

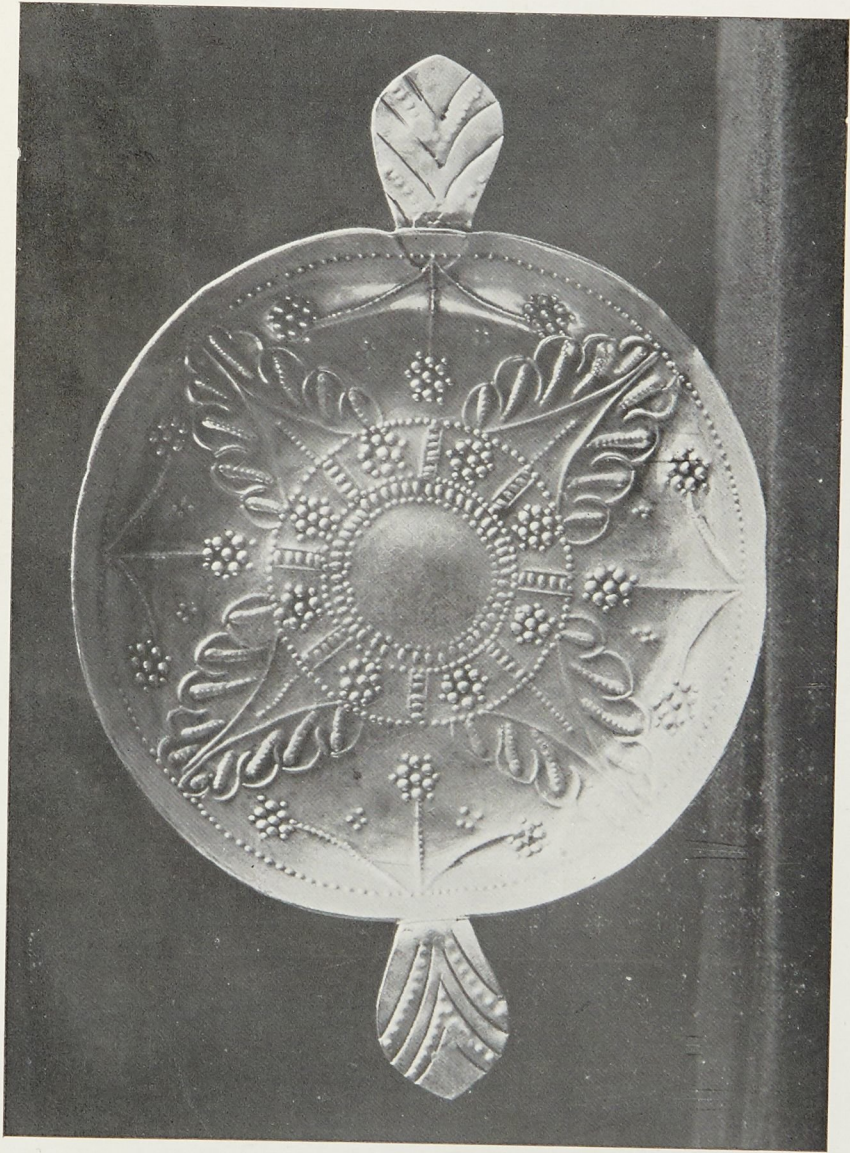
(See p. 98.)

In my enumeration of the Norman fonts of Norfolk on p. 98, I unfortunately omitted this very interesting example, not being then aware of its existence. It is a fine specimen, and falls into line completely with those described in my paper, more particularly with that at Sculthorpe.

The font is square, standing 2 ft. 10 ins. high and is 2 ft. 8 ins. across. The depth of the bowl is $13\frac{1}{2}$ ins. It is supported on five pillars, with Norman caps, one large central one forming the drain, and one at each angle. Each of the sides is adorned in a different manner: that facing the east contains four rudely carved figures, probably the Evangelists, under Norman arches and columns; two other sides contain representations of grotesque heads and foliage; that on the north contains an arcade of Norman arches. Is it a hazardous conjecture that the same artist designed the fonts at Sculthorpe and Breccles, and perhaps those at Toftrees, Shernborne, and South Wootton also? Through the kindness of the Vicar of Breccles, the Rev. H. S. Thorpe, I am enabled to supply the accompanying illustration of the east and south sides of the font.



BRECCLES.



SECULAR DISH AT WOODTON CHURCH.