

Church Plate in Norfolk.

COMMUNICATED BY

REV. E. C. HOPPER, M.A., F.S.A.,

Rector of Starston.

DEANERY OF NORTH INGWORTH.

The Deanery of Ingworth coincides with the "Hundred" of South Erpingham. It will be noted that well-known Norfolk families seem to have sprung from places in this district. Thomas Erpingham, builder of the gate bearing his name, opposite the west entrance to the Cathedral, died in 1428. It was probably built during his lifetime.

The Church Plate of this Deanery comprises the very fine pre-Reformation paten at Oulton; other pre-Reformation pieces at Colby and Banningham; but it seems a pity to have given new plate to two parishes which had the best of old plate.

It will be remembered that the Deanery of South Ingworth was undertaken by the late Rev. Beauchamp De Chair, and appears in the *Proceedings* for 1909.

The Parishes of Baconsthorpe and Beckham, formerly in this Deanery, have now been transferred to the Deaneries of Holt and Repps respectively.

I desire to express my sincere obligations to the Rev. W. Hildyard, Rural Dean, and to all the Clergy and others, who have very kindly allowed me to see the plate.

I have used and acknowledge the great assistance I have found in the late Mr. Cripps' *Old English Plate* and Mr. Jackson's *Old English Silver and Its Marks*.

ALBY, S. ETHELBERT.

Communion Cup.—Elizabethan; has the Norwich Castle and lion, C for 1567-8, and the flat fish as maker's mark. Inscribed—

“+ FOR THE TOUNSHYP OF AULBY.”

There are also two cups, a large credence paten and two smaller patens, and a large flagon without marks or inscription, not being silver.

BANNINGHAM, S. BOTOLPH.

Communion Cup.—Elizabethan, with the Norwich Castle and lion, C for 1567-8, the maidenhead, and the assay scratch. Inscribed—

“+ FOR THE TOUN OF BANINGAM.”

Paten.—Pre-Reformation. See separate notice (p. 156).

Flagon.—Large; has no marks, not being silver.

LITTLE BARNINGHAM, S. ANDREW.

Chalice.—An Elizabethan cup; having the Norwich Castle and lion, C for 1567-8, the trefoil slipped, and the assay zigzag scratch. Inscribed—

“+ LYCTLE BARNINGAME.”

The paten cover has the same marks on the convex side.

Flagon.—Glass, with silver mounts; having the leopard's head, lion passant, s for 1913, and $\begin{matrix} F D \\ W \end{matrix}$

Flagon.—Similar, with electro mounts.

The pewter flagon still remains.

BLICKLING, S. ANDREW.

Cup.—Fine Elizabethan; bearing the Norwich Castle and lion, D for 1568-9, and the flaming estoile of six points. Inscribed—

“BLYCK LING ANNO 1575.”

This and the paten are well gilt.

Paten.—Has the Norwich rose and crown, H for 1631, a pelican in her piety (probably), and one illegible, probably the Norwich Castle and lion.

Two Chalices, Credence Paten, and Large Flagon.—A modern set; each bearing the leopard's head, lion passant, queen's head, black letter I for 1844, and $\begin{matrix} C R \\ G S \end{matrix}$ for Rawlins and Sumner.

Flagon.—Large; pewter.

The H on the paten seems to be the first example noted of this year letter.

CALTHORPE, S. MARGARET.

Chalice.—Inscribed—

“+ THIS CUP IS FOR THE TOUNE OF CALTRAP.”

Has the Norwich Castle and lion, C for 1567-8, and man's head affronte.

Paten Cover.—The old paten beaten out. It is raised on a modern stand of silver, but no marks. There is the little hole in the centre where the pre-Reformation device was fixed.

Flagon.—Good ewer-shaped; no marks, not being silver.

Plate.—Pewter.

COLBY, S. GILES.

Communion Cup.—Elizabethan; has a flaming six-pointed star only. Inscribed—

“FOR THE TOWN OF COWLBY 1568.”

Paten.—Pre-Reformation. See separate notice (p. 157).

Second Chalice.—Of good early shape, but not silver.

Paten.—Plain disc; no marks.

Flagon.—Pewter.

Alms Dish.—Inscribed—

“COLBY 1845.”

CORPUSTY, S. PETER.

Chalice and Paten.—Electro-plate.

Flagon.—Pewter.

ERPINGHAM, S. MARY.

Old Plate; Elizabethan Chalice, and Paten Cover.—To each of which has been added a rim of new work.

The marks on the cup are, the Norwich Castle and lion, C for 1567-8, and the trefoil slipped. Inscribed—

“THE TONE OF ERPYNHGN WAY VII OZ H Q 1567.”

The paten has no marks. If the latter part of the inscription means “weight 7 oz.” it is unusual. What H Q means I do not know.

Modern Plate, Chalice, Paten, and Flagon.—Rather large; each inscribed—“Erpingham Church Plate MCCCCXLV.” Marks: the leopard’s head, lion passant,

queen's head, k for 1845, and R G under a crown, for Robert Garrard.

HEYDON, SS. PETER AND PAUL.

Communion Cup.—Elizabethan; of London make, with the floral band near the lip. No marks or inscription.

Paten.—Inscribed—"Orate p' aia Mariæ Dalrymple Hildyard, cuj' an' ppciet' De' Amen. In die Paschoe May 25 MDCCCXCV."

The marks are, the leopard's head, lion passant, S for 1893, a sun in glory, and T P.

Flagon, Credence Paten, and Alms Dish.—Good, but not silver.

INGWORTH, S. LAWRENCE.

A new bowl on the old Elizabethan stem of the chalice; has but one mark, TS linked. Timothy Scottow, a Norwich goldsmith, worked at Norwich from 1617 to 1644. He was Warden in 1624.

Paten.—Has the same mark.

Flagon.—Electro-plate.

Flagon.—Old; pewter.

ITTERINGHAM, S. MARY.

Chalice and Paten.—Very small, Elizabethan; of the date 1567 in all probability. The chalice has a fleur-de-lys only, and the paten A H in shaped shield.

Plate marked with a fleur-de-lys is so common in the neighbourhood of Bury S. Edmunds, that it is possible that it was made or re-made there. See my introduction to the inventory of the Rockland Deanery, *Proceedings XVII.*, 165.

Alms Dish.—Pewter.

OULTON, S. PAUL.

Communion Cup.—Elizabethan. Inscribed—

“FOR THE TOWNE OF OULTUN 1567.”

The marks are, the Norwich Castle and lion, C for 1567-8, and a man's face within rays, possibly the mark of Peter Peterson.

Paten.—A very fine pre-Reformation example. See separate notice (p. 157).

Flagon.—Pewter. Inscribed—“Oulton Flagon 1683.” The date on this piece of pewter is unusually interesting.

Alms Bowl.—Pewter. Made by S C. Two cocks crowing.

SAXTHORPE, S. ANDREW.

Chalice.—Marked with the leopard's head crowned, lion passant, king's head, R for 1812. Maker, I H, *i.e.*, John Hawkins.

Paten.—Inscribed—“I. Wood Vicarius, Saxthorpiæ dedit 1830.” It has the lion's head erased, Britannia, Court-hand C for 1698. Maker's mark barely legible, perhaps F A in an oval, for John Fawdery.

Flagon.—Electro-plate.

THWAITE, ALL SAINTS.

Communion Cup.—Elizabethan, with the Norwich Castle and lion, C for 1567-8. Maker's mark, the orb and cross. Inscribed—

“+ THE TOWNE OF TWAITE A° 1567.”

Paten Cover.—Good; has the same marks, but no inscription.

Flagon.—Good; pewter.

WICKMERE, S. ANDREW.

Chalice.—Elizabethan cup; marked with the Norwich Castle and lion, C for 1567-8. Maker's mark rather blurred (perhaps the maidenhead), and the assay zig-zag scratch. Inscribed—

“ + THIS CUP IS FOR T^HE TOUN OF WYCMER.”

Paten Cover.—Has the same marks, but not the assay. No inscription.

Paten.—Has the leopard's head crowned, lion passant, M for 1727, and J C with a heart, the mark of Joseph Clare.

WOLTERTON, S. MARGARET.

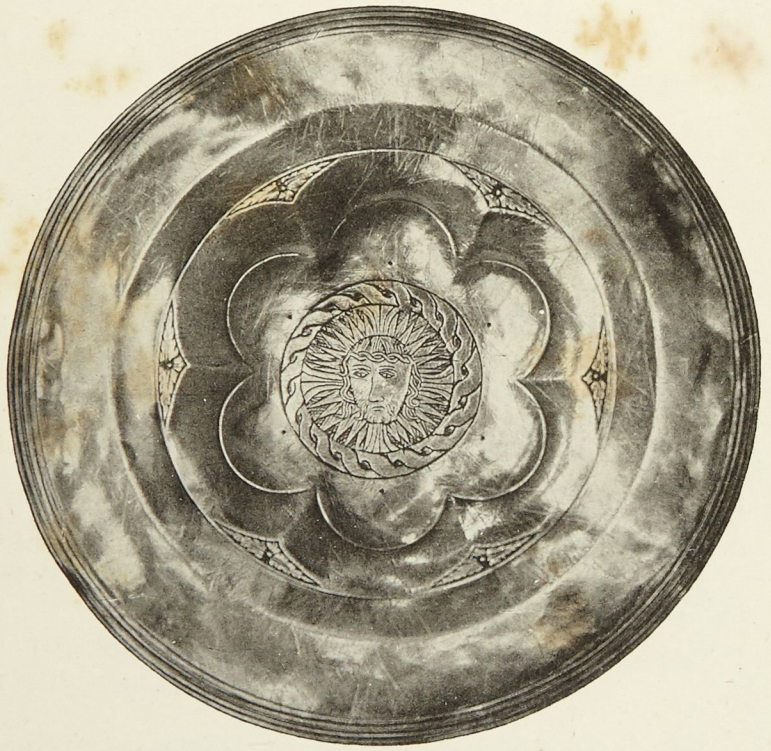
The Church has been in ruins for many years, but the old chalice remains in the possession of Lord Orford, who kindly sends me this notice:—

“ + THE TOWNE OF WOLTERTON 1568.”

The sun in splendour, the mark of Peter Peterson, the Castle and lion of Norwich, and C for 1567-8. It is $5\frac{1}{8}$ inches in height.”

From Canon Manning's Paper in the *Proceedings* for 1893 on pre-Reformation Patens in Norfolk:—

13. BANNINGHAM. Silver parcel gilt. Diameter, $5\frac{1}{8}$ ins. Device: vernicle, bust with straight hair falling on the shoulders, beard forked, shoulders in mantle, the upper half of a lozenge-shaped morse in front shown, cruciform nimbus to head with short straight lines of glory enclosed in an ellipse; all within a circle of sixteen short split rays. Spandrels with rayed leaf. Molded edge to rim. No marks. Date, *circa* 1520.



OULTON.

17. OULTON. Silver gilt. Diameter, $5\frac{7}{8}$ ins. Device: vernicle, face only, unconventional, and with crown of thorns on the brow, hair wavy and curled, beard undivided and blunt, cruciform nimbus and rays surrounding the face; all within a wreathed band and beautifully designed and engraved, spandrels with small double leaf. Molded edge to rim. No marks. Date, *circa* 1525.

19. COLBY. Silver. Diameter, $4\frac{1}{2}$ ins. Device: vernicle, bust with straight hair falling on the shoulders, beard sharply forked, cruciform nimbus and straight lines of glory in a broad ellipse, shoulders covered with a mantle, fastened in front with a diamond-shaped morse; all within a circle of thirteen short split rays. Date, *circa* 1520.

NOTE.—The Oulton Paten is, I believe, the only example where our Lord's head is crowned with thorns. Vernicle—*i.e.*, a representation of our Lord's face—so called from the legend of S. Veronica.