

- 1: Radiate brooch, foot missing, five integrally cast knobs; cross-hatched decoration on partly distorted head outlined by double groove; ring-and-dot ornament on knobs and below bow; single pin-lug on reverse with traces of iron spring. Found in Heacham parish (County Number 28503).
- 2: Fragment of head-plate and bow of radiate brooch with three surviving integrally cast knobs, each set with a garnet; vertically grooved decoration on head outlined by double groove; ring-and-dot ornament and multiple grooves on bow; double pin-lug on reverse. Found in Burnham Thorpe parish (County Number 28127).
- 3: Fragment of head-plate and bow of radiate brooch with decoration similar to No. 2; double pin-lug on reverse and traces of iron spring bar; three surviving incomplete knobs with deeply set, now empty, cells. Found in West Acre parish (County Number 16841).
- 4: Small-long brooch, lower foot missing; row of punched dots around edges of head and foot; single pin lug on reverse. The semi-circular head with its four small excrescences seems to echo the general form of the radiate brooch. However the foot, which is broader than the bow and which is flanked by slight swellings similar to lappets, makes no reference to the normally straight-sided foot of the radiate brooch. Found in Grimston parish (County Number 13800).

These new finds serve to define more closely the range of decoration on this small class of brooches; vertical grooves on the bow; close-set vertical grooving or cross-hatching within semi-circular zones on the head; ring-and-dots confined to knob and bow; and now the employment of garnets or other settings in the knobs. The five radiate brooches illustrated here and in the previous note bear a striking cohesion of treatment and may well have been manufactured in one centre. Apart from an isolated silver knob from Beachamwell (Ashley *et al.* 1990, no. 3), all are of copper alloy, whereas many continental examples are of silver.

Little can be inferred from the distribution of such a small and exotic group, especially when the distribution may change if new finds are made. At present, however, it should be noted that all, except the silver knob from Beachamwell, were found to the north of an east-to-west line through Norwich, and all except the lost example from Buxton-with-Lammas (Ashley *et al.* 1990 no. 4, not illustrated) were recovered to the west of a north-to-south line through Wymondham.

BIBLIOGRAPHY

- Ashley, S.J., Penn, K., and Rogerson, A. 1990 'Four Continental Objects of Early Saxon Date', *Norfolk Archaeol.* XLI, part I, 92-3.

ARCHAEOLOGICAL FINDS IN NORFOLK 1991

Edited by David Gurney

This is a selection of important finds, details of which have been entered onto the Sites and Monuments Record in 1991, maintained at the Norfolk Museums Service Landscape Archaeology Section at Gressenhall and at the Castle Museum, Norwich. This may be consulted by appointment.

The entries are arranged by period, and within each period by parish alphabetically. Grid references have been omitted at the request of finders. Where material of other periods is recorded but not described, this is shown by, for example (+PAL, RB).

Period abbreviations are as follows: PREHIS prehistoric; PAL/UPAL/LPAL Palaeolithic/Upper/Lower; MESO Mesolithic; NEO Neolithic; BKR Beaker; BA/EBA/MBA/LBA Bronze

Age/Early/Middle/Late; IA Iron Age; RB Romano-British; PS Pagan Saxon; MS Middle Saxon; LS Late Saxon; MED Medieval; PM post-Medieval; U undated. Metal artefacts and coins are of copper alloy (bronze) and Iron Age, Saxon and medieval coins are of silver unless otherwise stated.

Norfolk Landscape Archaeology and the Castle Museum are most grateful to all those who bring in finds for identification, thereby contributing to the Sites and Monuments Record and this annual list. The assistance of colleagues in other institutions, especially the British Museum and the Fitzwilliam Museum, Cambridge, in the identification of finds is gratefully acknowledged. The majority of the finds listed have been found in the course of metal-detector survey, but the list also includes discoveries of, for example, new earthworks, either by field observation or aerial photographic survey.

The illustrations are by Susan White.

PALAEOLITHIC

Burnham Market/Burnham Overy (Site 18496) (+RB, PS, MS, LS, MED). Late LPAL Levallois flake (D. Fox, P. West).

Hellesdon (Site 28179). Later UPAL blade core (S. Filby).

Hockham (Site 28225). Primary flake (J. Wymer).

Stoke Holy Cross (Site 28430). PAL or MESO narrow blade core c. 8000 BC (J. Cox).

Weeting with Broomhill (Site 28220). Later UPAL or early MESO flint blade (M. Stamp).

Wicklewood (Site 28407) (+PS). Primary flint flake, rolled (D. Woollestone).

MESOLITHIC

Hindringham (Site 24909) (+NEO, IA, RB, PS, MS, LS, MED). Flint scatter (P. West).

Hockham (Site 8992). Transverse or oblique arrowhead (E. Rogers).

Stoke Holy Cross (Site 28430). see PAL.

Weeting with Broomhill (Site 28220). See PAL.

Wendling (Site 28376). Quartzite macehead (Bush).

NEOLITHIC

Blofield (Site 28602). Flint flaked axe, sherds (D. Pilch).

Diss (Site 13704). NEO or EBA local quartzite pebble macehead (A. Brundle).

Drayton (Site 28596). Flint sickle (W. Picton).

Hellesdon (Site 28180). Laurel leaf arrowhead (S. Filby).

Hindringham (Site 24909) (+MESO, IA, RB, PS, MS, LS, MED). Flint scatter (P. West).

Hindringham (Site 25999) (+MED). Polished flint axe and other flints (P. West).

Redenhall with Harleston (Site 28208). Saddle quernstone fragment (G. Bartlett).

Rudham, W. (Site 28131) (+BA, RB, PS, MS, LS, MED). Flints (P. West).

Walton, E. (Site 28119) (+RB, PS, MED). Polished flint axe fragment (S. Brown).

Warham (Site 28667) (+BA). Polished flint axe fragment (P. Nelson).

Wicklewood (Site 28406) (+LS, MED, PM). Large reworked fragment of polished flint axe (D. Woollestone).

BRONZE AGE

- Ashill* (Site 28012). MBA socketed looped spearhead (R. Saunders).
- Bawburgh* (Site 25986). Cropmarks of two ring-ditches (D. Edwards).
- Brampton* (Site 24343). LBA sword hilt fragment (R. Hilliard).
- Carleton Rode* (Site 28624). Socketed spearhead (A. Hatcher).
- Cranwich* (Site 13697). LBA socketed axe fragment (D. Woollestone).
- Cranworth* (Site 25987). Cropmark of ring-ditch (D. Edwards).
- Cringleford* (Site 16229) (+RB, MS). Three LBA socketed axes, with casting flaws, cutting edges and casting seams untouched (D. Woollestone).
- Croxton* (Site 28607). Palstave blade (K. Hall).
- Deopham* (Site 25452). LBA socketed axe fragment (R. Chamberlin).
- Deopham* (Site 28498). MBA rapier/dirck/dagger blade and hilt fragment (Chase).
- Dereham, E.* (Site 15019). LBA tanged chisel (R. Jenkins).
- Diss* (Site 13704). See NEO.
- Dunham, Gt.* (Site 4188) (+IA, RB, LS, MED). LBA socketed axe fragment (P. Searle).
- Fritton* (Site 28338). MBA/LBA ? hoard of miniature knife, spear fragment and another object (N. Gardener).
- Hanworth* (Site 11685). Probable barrows visible as cropmarks and low mounds (M. Warren).
- Hellesdon* (Site 9527) (+NEO, MESO, PM). MBA looped palstave (S. Filby).
- Hoe* (Site 28281). Cropmark of ring-ditch (D. Edwards).
- Holme Hale* (Site 28573). Spearhead fragment (Saunders).
- Kilverstone* (Site 28608). Tanged chisel blade (K. Hall).
- Middleton* (Site 28121) (+RB, LS, MED). LBA tanged chisel (R. Baxter).
- Mulbarton* (Site 28679). LBA spearhead fragment (J. Bratton).
- Rudham, W.* (Site 28131) (+NEO, RB, PS, MS, LS, MED). ? Bad casting of socketed object (P. West).
- Sherborne* (Site 28125). EBA stone axe-hammer with incomplete perforation (J. Burke).
- Snettisham* (Site 28136) (+RB). LBA bronze hoard of thirty-eight pieces (socketed axe, spearhead, sword, knife, gouge, chisel, hammer, scabbard, ingot) (J. Burke).
- Sutton* (Site 28439). MBA unlooped palstave (Perchard).
- Tuddenham, N.* (Site 22176). LBA socketed chisel fragment (R. Reynolds).
- Walsingham, Gt.* (Site 2024) (+IA, RB, PS, LS, MED). Awl (D. Fox).
- Warham* (Site 28667) (+NEO). Socketed spearhead (P. Nelson).
- Weeting with Broomhill* (Site 28192). LBA socketed spearhead with basal loops (J. Cannell).
- West Acre* (Site 16841) (+RB, PS, MED). Fragment of ?'bag'-shaped ribbed chape (M. Carlile).
- Wighton* (Site 3980) (+RB, PS, MED). Awl (D. Fox).
- Wreningham* (Site 28495) (+IA, RB, PS, MED). Spearhead fragment (J. Kedge).
- Wymondham* (Site 28152). Sword hilt fragment (C. Muir).

IRON AGE

Ashill (Site 28013). La Tène III brooch (M. Howard).

Ashwellthorpe (Site 28319). Gold-dipped contemporary bronze forgery of British J ('Norfolk Wolf') stater (T. Ball).

Buxton with Lammas (Site 28394) (+MED, PM). Dispersed hoard of fourteen Gallo-Belgic E staters (C. Snowden, R. Hilliard).

Caistor St Edmund (Site 28200) (+RB, PS, MED). Gold Gallo-Belgic Dc quarter stater (D. Sutton).

Cranwich (Site 1039) (+BA/RB, MED). Boar-Horse coin (D. Woollestone).

Creake, N. (Site 25777) (+RB, LS) Coins: Face-Horse A, Face-Horse B/C, ECE B (2) (T. Harcourt).

Creake, N. (Site 28298). Plated coin of Addedomaros (Trinovantes/Catuvellauni) (A. Hopkins).

Creake, N. (Site 28299). Tankard handle (A. Hopkins).

Dunham, Gt. (Site 4188) (+BA, RB, LS, MED). La Tène III brooch (M. Bone).

Fring (Site 25758). Further coins from the Icenian silver coin hoard have been recovered, in two groups (of 16 and 8 coins) (J. Bocking).

Hindringham (Site 24909) (+MESO, NEO, RB, PS, MS, LS, MED). Gold stater, British Ja ('Norfolk Wolf') type (P. West).

Holme Hale (Site 28572). La Tène II brooch (M. Howard).

Ketteringham (Site 28162). Miniature terret (T. Evans).

Oxborough (Site 23520). Early Face-Horse C coin (D. Clark).

Postwick (Site 13603) (+RB, MED). Icenian coin, Bury A type (R. Crawford).

Stow Bedon (Site 28460) (+RB, MED). Sherd scatter (E. Savery).

Tuttington (Site 11666) (+RB, MS, LS, MED, PM). Gold stater, ? British Na (S. Garrod).

Walsingham, Gt. (Site 2024) (+BA, RB, PS, LS). Coins: gold quarter stater (Irstead type, British Nd), Boar-Horse B, Boar-Horse C, Face-Horse B/C (3), ANTED (2), ECE A (D. Fox).

Walton, E. (Site 3950) (+RB, MED). Gold quarter stater, British G, Clacton type, Mack 46 (S. Brown).

Wreningham (Site 28495) (+BA, RB, PS, MED). 'Dumb-bell'-shaped toggle (J. Kedge).

ROMANO-BRITISH

Ashill (Site 25782). Dolphin brooch (Fig. 1) (R. Saunders).

Aylsham (Site 28423). Vessel escutcheon/bucket fitting in form of human bust (Chase).

Brinton (Site 28408) (+PS, MED). Miniature (possibly votive) ?axe (T. Linford).

Burgh Castle (Site 13227) (+MS, MED). Vessel mount/escutcheon in form of bull's head (R. Rilings).

Caistor St. Edmund (Site 11757) (+MED). Scabbard runner fragment with pointed ridged terminal (J. Harrell).

Creake, N. (Site 1913). Votive stand (C. Pears).

Dunham, Gt. (Site 4188) (+BA, IA, LS, MED). Knife handle in form of ?deity (?Mars/Minerva) (M. Bone).

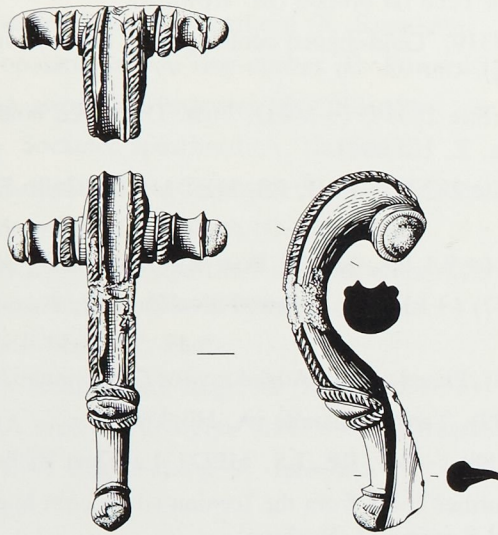


Fig. 1
Roman brooch from Ashill.
Scale 1:1

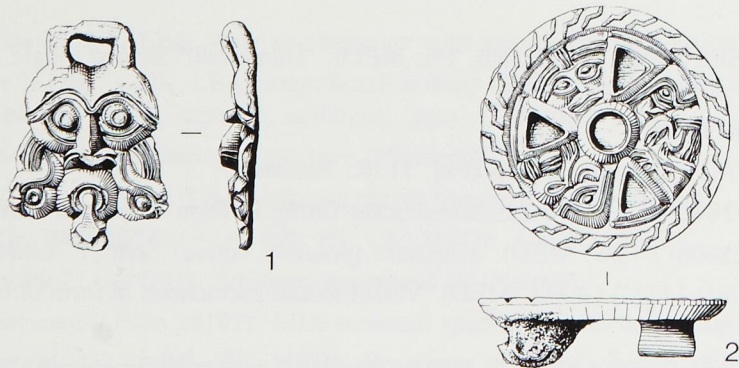


Fig. 2
Pagan Saxon objects from Caistor St. Edmund and Wramplingham.
Scale 1:1

- Fincham* (Site 28383). Claudian irregular *as* (H. Crome).
- Fulmodeston* (Site 25990) (+LS, MED, PM). Crude miniature two-handed vessel, possibly RB votive object (T. Harcourt).
- Hethersett* (Site 28417). Cart mount in form of eagle (D. Woollestone).
- Hindringham* (Site 28470) (+PREHIS, MED, PM). Finger ring, wasp brooch (rare type), figurine (P. West).
- Loddon* (Site 13009) (+MED). Punch for making moulds for faces in glass or pottery (P. Searle).
- Lopham, N.* (Site 10870). Lion-head mount in high relief (M. Bone).
- Marlingford* (Site 28306). Hoard of 168 *denarii*, with coins from Mark Antony to Marcus Aurelius, deposited c. AD 172 (D. Woollestone).
- Middleton* (Site 3391) (+LS, MED, PM). Samian sherd with deliberately notched edge, perhaps used as a potter's stamp at the nearby kiln (P. Jackson).
- Middleton* (Site 28583) (+MED, PM). End-loop cosmetic mortar (R. Baxter).
- Oxborough* (Site 28671) (PREHIS, PS, MED). Finds scatter and building materials suggest possible site of villa or building (M. de Bootman).
- Roudham* (Site 28205). Mercury figurine (Price).
- Shouldham* (Site 28645). Finds scatter with building materials suggest site of villa (M. de Bootman).
- Tuttington* (Site 28493) (+MS, LS, MED). RB or MED sheep head figurine (G. Shepherd).
- Walsingham, Gt.* (Site 2024) (+BA, IA, PS, LS, MED). Enamelled votive stand, votive axe, phallic pendant (D. Fox).
- Winch, W.* (Site 28120) (+PS, MED). Mercury figurine (B. Heslington, E. Smedhurst).
- Wramplingham* (Site 25697) (+PREHIS, PS, MS, LS, MED, PM) Late amphora-shaped strap-end (R. Knowles, R. Taylor).
- Wymondham* (Site 9437). Flat cockerel figurine with ring and dot eye, on solid cylinder with flat base and perforation at right angles to cockerel (I. Taylor).

PAGAN SAXON

- Barnham Broom* (Site 28655) (+MED). Gilt disc/vessel escutcheon (G. Allen).
- Billington* (Site 17229). Cruciform and small-long brooch (Dixon).
- Bracon Ash* (Site 28442) (+MED). Fragment of great square-headed brooch. (A. Womack).
- Burnham Market/Burnham Overy* (Site 18496) (+PAL, RB, LS, MED). PS or MS 7th C. lead matrix for repoussé metalwork or trial piece, with sunken 'mould' of bearded human face (D. Fox, P. West).
- Caistor St. Edmund* (Site 28200) (+IA, RB, MED). Gilt bronze pendant with finely-modelled human face (Fig. 2, No. 1) (D. Sutton).
- Costessey* (Site 9310) (+PREHIS, RB, MS, LS, MED). Late 6th/early 7th C. die for decorating foil for ?drinking horn mounts (A. Webster).
- Happisburgh* (Site 24004). Unusual wrist-clasp, gilded (T. English).
- Heacham* (Site 28503). Radiate brooch decorated with ring-and-dot (T. Beales).
- Holt* (Site 28656) (+LS). Small Group II cruciform brooch (D. Coleman).

- Stow Bedon* (Site 28512) (+LS, MED, PM). Cruciform brooch, Group IV (P. Woollard).
- West Acre* (Site 16841) (+BA, RB, LS, MED). Brooches, wrist clasps, other metalwork (M. Carlile, S. Brown).
- Winch, E.* (Site 28672) (+PREHIS, IA, RB, MED). Sherd scatter (M. de Bootman).
- Wrampingham* (Site 25697) (+PREHIS, RB, MS, LS, MED, PM). Late 6th/early 7th C. silver disc brooch with human mask, animal ornament and niello zig-zag border (Fig. 2, No. 2) (R. Knowles, R. Taylor).
- Wreningham* (Site 28622) (+RB). Small-long brooch (A. Womack).

MIDDLE SAXON

- Attleborough* (Site 25612). 8th C. disc fragment, once enamelled and decorated in Northumbrian or Irish style (D. Woollestone).
- Barnham Broom* (Site 28215) (+RB, LS, MED). Two ansate (caterpillar) brooches (G. Allen, R. Reynolds).
- Bawburgh* (Site 25597). Unusual ansate (caterpillar) brooch (N. Donmall).
- Bawsey* (Site 25962) (+IA, RB, PS, LS, MED). Pins, openwork plaque fragment depicting ?lion, four sceattas (S. Brown).
- Burgh Castle* (Site 13227) (+RB, MED). Sceat, Series E derivative of VICO variant, Lower Rhineland or Frisia, c. 700-720? (R. Rilings).
- Burnham Market/Burnham Overy* (Site 18496). See PS.
- Congham* (Site 11743) (+MED). Wedge-shaped strap-end (I. Mickleburgh.).
- Costessey* (Site 9310) (+PREHIS, RB, PS, LS, MED). Coin of Beonna of East Anglia, AD 749-57 or later, moneyer Efe. Penny of Coenwulf of Mercia (in East Anglia c. AD 800-21), moneyer Botred/Fotred (L. Carriage).
- Cringleford* (Site 16229) (+BA, RB). Penny of Eadwald (c. AD 796-8?), moneyer Eadnoth (D. Woollestone).
- Hindringham* (Site 24909) (+MESO, NEO, IA, RB, PS, LS, MED). Coin of Offa of Mercia, circular type, heavy coinage, c. 792-3, moneyer Osmod, Canterbury or London (P. West).
- Horstead with Stanninghall* (Site 25762) (+RB, MED). Ansate (caterpillar) brooch (D. Baldry, T. Hudson).
- Rudham, W.* (Site 28131) (+NEO, BA, RB, PS, LS, MED). Ansate (caterpillar) brooch. Two MS/LS 9th C. silver strap-ends with niello inlay and Trehiddle-style animal motifs (Fig. 3) (D. Fox, P. West).
- Thetford* (Site 28612). Tweezers decorated with ring-and-dot (K. Hall).
- Walton, W.* (Site 18947) (+RB, LS, MED). 8th C. lozengiform pinhead with interlace decoration (M. Carlile).
- Wrampingham* (Site 25697) (+PREHIS, RB, PS, LS, MED, PM). Sceat, Series E, c. AD 720-740? (R. Knowles, R. Taylor).

LATE SAXON

- Bawsey* (Site 25962) (+IA, RB, PS, MS, MED). Aethelred II long cross penny c. AD 997-1003, box mount (S. Brown).

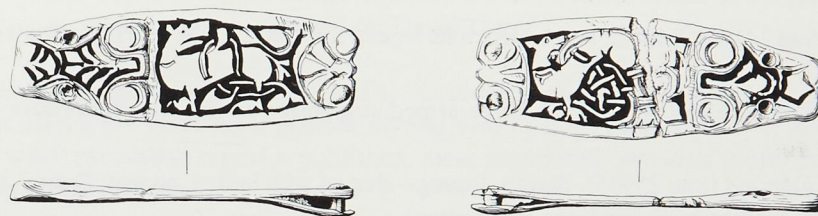


Fig. 3

Middle or Late Saxon silver strap-ends with niello inlay from West Rudham.

Scale 1:1

- Bintree* (Site 28471) (+MED). Half-barrel-shaped foot or finial (B. George).
- Brooke* (Site 28444). Cologne pfennig of Otto III, second quarter of 11th C. (D. Bennett).
- Burnham Market* (Site 28127) (+IA, RB, PS, MS, MED). Coin, silver dirham, Samanid dynasty, Ahmad ibn Isma'il ibn Ahmad (Ahmad II, AD 907-914) (D. Fox).
- Costessey* (Site 9310) (+PREHIS, RB, PS, MS, MED). Purse hoard of three Harthacnut coins, moneyers Leofwine (2) and Rinulf, all Norwich mint (A. Webster).
- Creake, N.* (Site 25777) (+IA, RB). 10th C. Winchester-style strap-end (T. Harcourt).
- Ditchingham* (Site 11674). Silver ingot, the first Anglo-Scandinavian Viking-age ingot to be recorded in East Anglia (M. Bone).
- Field Dalling* (Site 28305) (+PM). 11th C. box-mount with two Ringerike-style confronted animals (A. Kemp).
- Loddon* (Site 13009). LS or MED 11th C. strap-union with Romanesque affinities depicting cat-like animal head in centre (M. Bone).
- Holt* (Site 28656) (+PS). 10th C. Borre-style disc brooch (D. Coleman).
- Keswick* (Site 28665) (+RB). 10th C. Viking import convex disc brooch, decorated with three animal heads (A. Womack).
- Rudham, W.* (Site 28131) (+NEO, BA, RB, PS, MS, MED). Bridle cheekpiece. See also MS (P. West).
- Stow Bedon* (Site 28512) (+PS, MED, PM). Ringerike-style finial (P. Woollard).
- Swaffham* (Site 28588). Box-mount depicting quadruped (P. Green).
- Trowse with Newton* (Site 25710) (+PS). Borre-style disc brooch (G. Linton).
- Tuttington* (Site 28493) (+RB, MS, MED). 10th C. Viking trefoil brooch (G. Shepherd).
- Walsingham, Gt.* (Site 2024) (+BA, IA, RB, PS, MED). Gilt 10th C. strap-end with 'ring-chain' motif in Borre style (D. Fox).
- Walton, W.* (Site 18947) (+RB, MS, MED). Ringerike-style animal-head finial or foot (M. Carlile).
- Wramplingham* (Site 25967). 10th C. Borre-style disc brooch (R. Knowles).

MEDIEVAL

Brampton (Site 24161). 14th C. seal matrix with legend SAVNCTA CATERINA (Saint Catherine) (R. Hilliard).

Caister on Sea (Site 8675). ?12th C. three-armed suspension fitting with decorative prong (G. Cook).

Caistor St. Edmund (Site 25985). Stamp, lozenge-shaped with lattice, acorns, 'lobes' and leaves, probably for leather book-bindings (D. Sutton).

Cranwich (Site 28239) (+LS). 13th C. crucifix, originally enamelled (D. Woollestone).

Emmeth (Site 19631) (+RB). 14th C. seal matrix depicting squirrel with legend CREDE MICHI, partly misspelt Latin for 'Believe in me'. (M. Carlile).

Fincham (Site 25161). 12th C. dog-leash swivel fragment with animal heads at each end of bar (C. Sproule).

Fincham (Site 28229). Gilt copper alloy processional cross (C. Sproule).

Hindringham (Site 25996). Quarter noble of Richard II (P. West).

Horstead with Stanninghall (Site 28123). 13th C. buckle plate with ?lion in relief (M. Bone).

Houghton (Site 28476). Earthworks of deserted village found during field survey (T. Williamson).

Loddon (Site 13009). See LS.

Middleton (Site 28583) (+RB, PM). Papal bulla, Clement III, AD 1187-1191 (R. Baxter).

Mundesley (Site 28516). Lead mortuary cross (D. Johnson).

Reedham (Site 28509). Fragment of 14th/15th C. monumental brass (Cooper).

Swaffham (Site 28213) (+RB, PS). 15th C. solid cast knife handle terminal in the form of a bear with harness (R. Ludford).

Taverham (Site 24192). 12th C. corbel in form of face-mask (Gabriel).

Thetford (Site 28613). 12th C. iron horseshoe (K. Hall).

Tuttington (Site 28493). See RB.

Tuttington (Site 28657). 15th C. enamelled sword disc pommel (G. Shepperd).

Walsingham, Gt. (Site 2024) (+BA, IA, RB, PS, LS). Gilt brooch/pendant with scalloped edge and repoussé double six-petalled rose, paralleled in Fishpool (Notts) hoard pre-1464 (D. Fox).

Walton, W. (Site 18646) (+LS, MED, PM). William I penny, Thetford mint, moneyer ?Osbern. Re-used as brooch (M. Carlile).

Walton, W. (Site 18947) (+RB, MS, LS). 12th C. gilt silver cross fragment with hand in relief and legend [DEXTE]RA DEI ('Right hand of God') (M. Carlile).

Wormegay (Site 25343) (+MS, LS). Penny of Robert II of Scotland, Edinburgh mint, AD 1371-90, a scarce coin (L. Jarvis).

Wramplingham (Site 25697) (+PREHIS, RB, PS, MS, LS, PM). Gilt sword belt-chape with animal head terminal (R. Knowles, R. Taylor).

POST-MEDIEVAL

Raynham (Site 28274). Cropmarks of buildings, possibly the old rectory (D. Edwards).