

to quibble about the precise origin of this remarkable piece as it is hopeless to muse upon the circumstances leading to its arrival in Walsingham. It was certainly far from home when lost or buried, and is without parallel in England.

ACKNOWLEDGEMENTS

Our thanks are due to Dido Clark and Kenneth Penn for all their helpful comments.

BIBLIOGRAPHY

- Ashley, S.J., Penn, K. and Rogerson, A. 1990 'Four Continental Objects of Early Saxon Date', *Norfolk Archaeol.* XLI, part I, 92-3.
- Ashley, S. and Rogerson, A. 1992 'Three Radiate Brooches and a Small-long Brooch from Norfolk', *Norfolk Archaeol.* XLI, part III, 361-2.
- Jørgensen, J. 1992 'A.D. 568 – A Chronological Analysis of Lombard Graves in Italy', *Arkaeologiske Skrifter* 5 (University of Copenhagen)
- Penn, K. and Rogerson, A. 1989 'An Anglo-Saxon Brooch Fragment from Shelfanger, near Diss' *Norfolk Archaeol.* XL, part III, 324
- Kühn, H. 1974 *Die germanischen Bügelfibeln der Völkerwanderungszeit, part 2, – Die germanischen Bügelfibeln der Völkerwanderungszeit in Süddeutschland* vol. 2 (Graz).

ARCHAEOLOGICAL FINDS IN NORFOLK 1992

Edited by David Gurney

This is a selection of important finds, details of which have been entered onto the Sites and Monuments Record in 1992, maintained at the Norfolk Museums Service Landscape Archaeology Section at Gressenhall and at the Castle Museum, Norwich. This may be consulted by appointment.

The entries are arranged by period, and within each period by parish alphabetically. Grid references have been omitted at the request of finders. Where material of other periods is recorded but not described, this is shown by, for example, (+PAL, RB).

Period abbreviations are as follows: PREHIS prehistoric; PAL/UPAL/LPAL Palaeolithic/Upper/Lower; MESO Mesolithic; NEO Neolithic; BKR Beaker; BA/EBA/MBA/LBA Bronze Age/Early/Middle/Late; IA Iron Age; RB Romano-British; PS Pagan Saxon; MS Middle Saxon; LS Late Saxon; MED Medieval; PM post-Medieval; U undated. Metal artefacts are of copper alloy (bronze) and Iron Age, Saxon and Medieval coins are of silver unless otherwise stated.

Norfolk Landscape Archaeology and Castle Museum Archaeology Department are most grateful to all those who bring in finds for identification, thereby contributing to the Sites and Monuments Record and this annual list. The assistance of colleagues in other institutions, especially the British Museum and the Fitzwilliam Museum, Cambridge, in the identification of finds is gratefully acknowledged. The majority of the finds listed have been found in the course of metal-detector survey, but the list also includes fieldwalking finds and new discoveries of sites either by field observation or by aerial photographic survey.

The illustrations are by the Suffolk Archaeological Unit (Fig. 1), Sue White (Fig. 2), Kenneth Penn (Fig. 3) and Steven Ashley (Fig. 4).

PALAEOLITHIC

Bawburgh (Site 29053) (+NEO, BA, IA, PM). Flint flakes, ?blade, ?axe (D. Woollestone, P. Robins).

Docking (Site 29267). UPAL worked flint with blade removals (P. Aldis).

Melton, Lt. (Site 22600) (+NEO, MED). Nineteen brown-stained flakes and two stained and slightly worn thick primary flakes (D. Woollestone).

MESOLITHIC

Bunwell (Site 23091) (+NEO, BA, IA, RB, PS, MED, PM). Microlith (P. Day).

Dersingham (Site 28798) (+NEO, BA, RB, MED, PM). MESO or NEO arrowhead (J. Smallwood).

Riddlesworth (Site 29318) (+NEO, IA, RB, MED, PM). MESO/NEO ?micro-burin and struck flints indicating knapping site (E. Savery).

Shernborne (Site 29269). MESO or NEO macehead (J. Burke).

NEOLITHIC

Bunwell (Site 23091) (+MESO, BA, IA, RB, PS, MED, PM). Small blade and flake (P. Day).

Caistor St. Edmund (Site 9794). Axe flake and early NEO leaf arrowhead in flint-filled pit (D. Woollestone).

Dersingham (Site 28798) (+MESO, BA, RB, PS, LS, MED, PM). Early NEO flints, including flakes, end scrapers, blades, discoidal scraper, knife (J. Smallwood).

Feltwell (Site 20980) (+IA, RB). Hollow-based arrowhead made from flake of polished axe (D. Woollestone).

Heacham (Site 28850) (+IA, RB, LS, MED). Retouched flakes and blade in Bergerac flint (J. Bocking).

Holme Hale (Site 28855). Cropmarks of two parallel ditches with radius-end, possibly a cursus (D. Edwards).

Melton, Lt. (Site 22600) (+PAL, MED). Five flint flakes and fragment of polished flint axe (D. Woollestone).

Mundham (Site 28508) (+RB). Four worked flints (N. Donmall).

Riddlesworth (Site 29318) (+MESO, IA, RB, MED, PM). Side scraper, blade and struck flints indicating knapping site (E. Savery).

Shernborne (Site 29269). See MESO.

Walton, E. (Site 3768) (+IA, RB, MS, LS, MED). Flint knife (S. Brown).

BRONZE AGE

Antingham (Site 28821). Cropmark of ring-ditch (D. Edwards).

Ashill (Site 21770). EBA/MBA tanged chisel/stake from cropmark site of ring ditches (Lowe).

Bawburgh (Site 29053) (+PAL, NEO, IA, PM). BKR pottery and flint dagger (D. Woollestone, P. Robins).

Bunwell (Site 23091) (+MESO, NEO, IA, RB, PS, MED, PM). Two axe blades, one probably a

- palstave (P. Day).
- Caistor St. Edmund* (Site 29060) (+RB). Rapier fragment (C. Chesters).
- Creake, S.* (Site 28817) (+RB). Hoard of LBA sword and spearhead fragments (D. Fox).
- Cringleford* (Site 16229) (+MS). LBA decorated socketed axe (D. Woollestone).
- Denver* (Site 29074). MBA palstave (B. Lister).
- Dersingham* (Site 28798) (+NEO, RB, PS, LS, MED, PM). BKR sherds and arrowhead (J. Smallwood).
- Feltwell* (Site 5169) (+RB). Possible LBA hoard of socketed axe, cake, disc and segments, LBA chisel (D. Woollestone).
- Hindringham* (Site 25474) (+MS). LBA socketed axe (P. West).
- Hindringham* (Site 29135) (+RB, MED). Sword-blade fragment (P. West).
- Hindringham* (Site 28844) (+PS). Sword blade fragment (P. West).
- Hockwold cum Wilton* (Site 28787). Unlooped palstave (E. Secker).
- Hockwold cum Wilton* (Site 29036). Cropmarks of one double concentric and three single ring-ditches (D. Edwards).
- Hoe* (Site 29159) (+IA, RB, MED). MBA palstave (A. Lupton).
- Keswick* (Site 28714). Large flat axe, Class 4, middle EBA (A. Womack).
- Keswick* (Site 9714) (+RB). Sword blade fragment (J. Kedge).
- Methwold* (Site 22637) (+MED). EBA narrow flat axe (D. Langfield).
- Methwold* (Site 24485). MBA dagger, Burgess Group II (N. Green).
- Methwold* (Site 4885). Barrow found to north-east of group of three discovered 1914-15 (K. Penn).
- Methwold* (Site 29298). Tip of rapier blade (D. Woollestone).
- Mulbarton* (Site 28851) (+MS, MED, PM). LBA axe (J. Bratton).
- Norwich* (Site 873). Hoard of socketed axe, awl, pin and pair of tweezers (E. Ellis).
- Oxborough* (Site 29157). MBA ceremonial bronze dirk (G. Allen).
- Sporle with Palgrave* (Site 28809) (+MED, PM). LBA axe fragment (P. Willey).
- Wafield* (Site 28862). Tip of spearhead (D. Johnson).
- Swardeston* (Site 11691) (+RB, MED). MBA palstave blade (J. Kedge).
- Thetford* (Site 28984). LBA bag-shaped chape (S. Gray).
- Thetford* (Site 28985). LBA sword, Hallstatt derivative of Cowen's Thames Type, 7th C. BC. Also MBA unlooped palstave (Acton Park phase) (S. Gray).
- Thetford* (Site 29114) (+U). LBA socketed axe (S. Gray).
- Weeting with Broomhill* (Site 29253). Probable round barrow mound revealed by tree felling (E. Rose).
- Witchingham, Gt.* (Site 28968). Early MBA flanged chisel (R. Woodrow).
- Yarmouth, Gt.* (Site 28721). LBA socketed axe head (S. Jeffries).

IRON AGE (Fig. 1)

Ashill (Site 25782) (+RB, MED). Four coins: Icenian unit, crescent type; uncertain bronze unit;

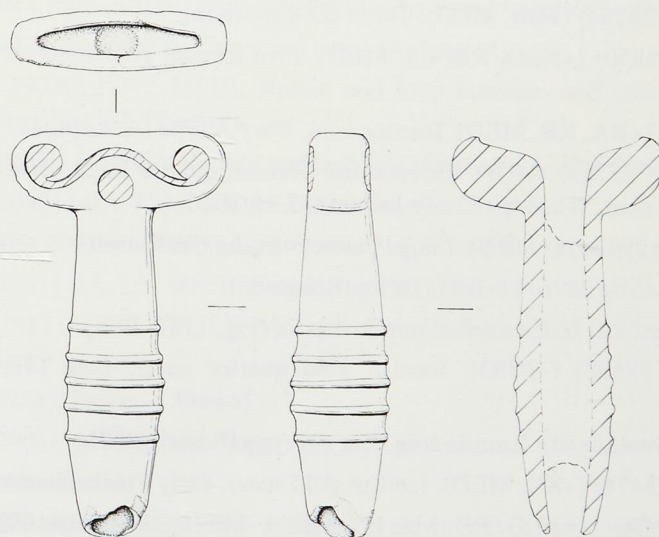


Fig. 1

Iron Age mirror handle from Moulton. Scale 1:1

Icenian gold quarter stater, Late Freckenham type; Atrebatian gold quarter stater, Abstract type (R. Saunders, M. Howard).

Attleborough (Site 29302). Lynch pin (C. Atkinson).

Barningham, Lt. (Site 28037). Enamelled escutcheon from horse trapping. Circular with three voided circles filled with red enamel (T. Hudson, D. Baldry).

Bawburgh (Site 29052). Bone gouge (P. Robins).

Besthorpe (Site 29171) (+RB, LS, MED, PM). Five Icenian coins: Boar/Horse, Face/Horse, 3 Pattern/Horse (ECEN, ECEN, ANTED) (D. Harty).

Bracon Ash (Site 28732) (+RB, PS, MED). Terret (M. Womack, A. Womack).

Brampton (Site 1124) (+RB, MED). Icenian coin, Pattern/Horse ECE (M. Bone).

Bunwell (Site 23091) (+MESO, NEO, BA, RB, PS, MED, PM). Scatter of flint-gritted pottery (P. Day).

Corpusty (Site 28973). Icenian gold stater, Early Freckenham type (R. Chamberlin).

Creake, N. (Site 28743) (+RB, MED). Stater, originally gold plated, ancient forgery of Dobunnic stater of AD 43-45 (T. Harcourt).

Didlington (Site 1040) (+RB, MED). Icenian coin, Pattern/Horse ANTED (M. Willis).

Feltwell (Site 20980) (+NEO, RB). Icenian coin Face/Horse B/C; Trinovantian bronze coin, Thurrock type (D. Woollestone).

Frettenham (Site 28765) (+RB, MED). Terret (D. Davidson).

Heacham (Site 28850) (+NEO, RB, LS, MED). Five Icenian gold staters, Norfolk Wolf type (J. Bocking).

Hoe (Site 29159) (+BA, RB, MED). Icenian coin, Bury A type (A. Lupton).

Holme Hale (Site 25783) (+RB). Three coins: Icenian quarter units, Boar/Horse derivatives (2); Trinovantian coin, Whaddon Chase variant (M. Howard).

King's Lynn (Site 29136) (+MED). Loop, ?harness fitting (A. Garrett).

Massingham, Gt. (Site 28961) (+RB). Terret (Robinson).

Moulton, Gt. (Site 29017). Enamelled mirror handle (Fig. 1) (T. Bell).

Mundham (Site 28508) (+NEO). Icenian gold quarter stater, Late Freckenham type (N. Donmall).

Pickenham, N. (Site 28874). Icenian coin, Bury A type (Edwards).

Ringstead (Site 28478) (+RB, MED). Icenian gold stater, early Freckenham type (M. Gibbon).

Walton, E. (Site 3768) (+NEO, RB, MS, LS, MED). Two Icenian coins: Pattern/Horse; plated copy of Pattern/Horse symbol type (D. Miller).

Wereham (Site 16160) (+RB, MED). Late IA or early RB terret (K. Everett).

Wrenningham (Site 28495) (+RB, MS, MED). Terret fragment (A. Womack).

ROMANO-BRITISH

Attleborough (Site 29303) (+MED). Coins, pin and steelyard weights (C. Atkinson).

Besthorpe (Site 29171) (+IA, LS, MED, PM). Roman coins (1st to 4th C.), brooches, pin, ring, nail cleaner, bucket escutcheons (D. Harty).

Blakeney (Site 29163) (+MED, PM). Brooch and animal-headed terminal from cosmetic palette (J. Stevens).

Bracon Ash (Site 28733) (+MS, LS, MED, PM). 4th C. coins and key handle (A. Womack).

Brettenham (Site 29170). End-looped cosmetic mortar (R. Carriage).

Caistor St. Edmund (Site 29060) (+BA). Spoon-probe (C. Chesters).

Cley next the Sea (Site 28773). Tiny bronze two-handled globular vessel, possibly for ointment or liquid (R. Allen).

Costessey (Site 29047). Kiln waste in pit (J. Bown).

Deopham (Site 28354) (+MED). Bucket foot, cast and decorated with interlace and ring-and-dot (R. Chamberlin).

Dereham, E. (Site 28967) (+MED). Coins, brooches and tweezers (R. Jenkins).

- Ellingham* (Site 17336) (+MED, PM). Dolphin brooch from cropmark site (Davidson).
- Ellingham* (Site 28990). Dolphin brooch (Davidson).
- Feltwell* (Site 5164) (+NEO). Military buckle (D. Woollestone).
- Feltwell* (Site 21137). Roman coins and large blue melon bead (D. Woollestone).
- Frettenham* (Site 28975) (+MS, MED). Coin and bracelet (Davidson).
- Gayton* (Site 15404). Dolphin brooch from cropmark of ring-ditch (J. Wells).
- Gunthorpe* (Site 28847) (+MED). Concentration of building material and pottery (P. West).
- Hockwold cum Wilton* (Site 29169). Enamelled skillet, base and handle missing (M. Cock).
- Hoe* (Site 29159) (+BA, IA, MED). Terret and coins (A. Lupton).
- Holme Hale* (Site 29029) (+PS, MED). Button and loop fastener, and crescentic foot from bronze vessel (R. Saunders, M. Howard).
- Itteringham* (Site 28905) (+MED). Pottery and building materials (A. Davison).
- Kettlestone* (Site 13043) (+IA, MS, MED). Gold earring (V. Chapman).
- Newton Flotman* (Site 28989) (+MED). Lead votive plaque and two brooches (G. Linton).
- Ringstead* (Site 28478) (+IA, LS, MED). Finger ring (M. Gibbon).
- Rudham, W.* (Site 28131) (+PS, MS, LS, MED) Ladle with inlaid gold in lozengiform and triangular zones (D. Fox).
- Snettisham* (Site 29268). Probe (J. Burke).
- Swaffham* (Site 29209) (+MED, PM). Finger ring with glass intaglio (A. Oliver).
- Wereham* (Site 16160). See IA.
- Weybourne* (Site 29168) (+MED, PM). Roman coins, brooches, pin, cosmetic palette (G. Abel).
- Wicklewood* (Site 29106). Concentration of tile, tesserae, pottery and metalwork, indicating site of building (D. Woollestone).
- Wootton, N.* (Site 29076). ?RB pipeclay figurine of female figure (K. Ricketts).
- Wormegay* (Site 28853) (+MED). Knobbed terret fragment (A. Garrett).

PAGAN SAXON (Fig. 2)

- Aslacton* (Site 28739). Small-long brooch (cruciform type) (M. Seager).
- Barwick* (Site 28705) (+RB, MS, LS, MED, PM). Wrist-clasp and girdle-hanger (S. Pagan).
- Bawdeswell* (Site 28911) (+MED). Gilded wrist-clasp (B. Grieves).
- Bixley* (Site 9585) (+MED). ?PS bronze stamp with one pointed end and the other to produce circle inside cross motif on pottery (G. Linton).
- Bracon Ash* (Site 28732) (+IA, RB, MED). Gold pendant, made of four concentric bands of beaded wire (M. Womack, A. Womack).
- Bracon Ash* (Site 29288). Cruciform brooch (A. Kedge).
- Bunwell* (Site 23091) (+MESO, NEO, BA, IA, RB, MED, PM). Fragment of footring from Coptic bowl (P. Day).
- Dereham, E.* (Site 28969). Sceat (N. Donmall).
- Dersingham* (Site 24261). Group V florid cruciform brooch (S. Farrow).

Dersingham (Site 28798) (+MESO, NEO, BA, RB, LS, MED, PM). Sherds in several different fabrics, some stamped (J. Smallwood).

Emneth (Site 28959) (+MED). Small-long brooch (M. Carlile).

Fring (Site 28754) (+RB, MED). Very unusual ?imported brooch (Fig. 2A) (J. Bocking).

Gayton (Site 15404) (+RB, MED). Finds suggesting cemetery on ring-ditch cropmark site (J. Wells).

Gunthorpe (Site 3182). Girdle hanger (D. Baldry, T. Hudson).

Holme Hale (Site 28852) (+MS, MED). Group I cruciform brooch (R. Saunders).

Holme Hale (Site 29029) (+RB, MED). ?PS ring with shank with moulded animal head (R. Saunders).

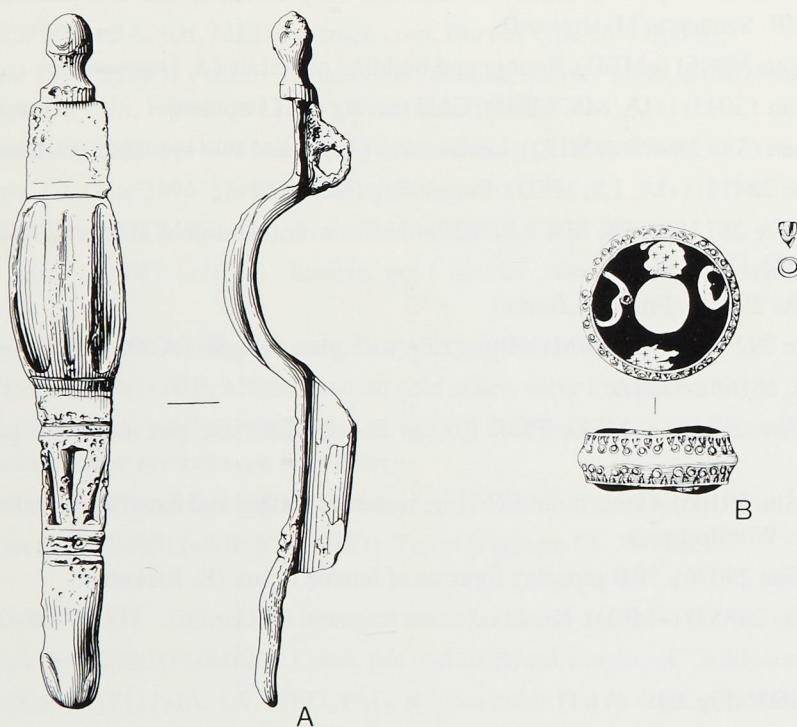


Fig. 2

- A. Pagan Saxon brooch from Fring. Scale 1:1
 B. Pagan Saxon ring from Rudham. Scale 1:1 (stamps 2:1)

Roudham (Site 28778) (+RB, MED). Openwork belt-fitting, decorated with ring-and-dot (D. Langfield).

Rudham, W. (Site 28131) (+RB, MS, MED). Gold ring (Fig. 2B) with glass bead (dark blue with yellow spots and white or very pale blue rings) inside and stamped with annulets and triangles; a 6th C. necklace pendant (P. West).

Swaffham (Site 29208). Cruciform brooch foot, Åberg Group I or early Group II (A. Oliver).

Swaffham (Site 29212). Small-long brooch, 6th C. (A. Oliver).

MIDDLE SAXON (Fig. 3)

Ashill (Site 25861). Pin with faceted head (R. Saunders).

Barwick (Site 28705) (+RB, PS, LS, MED, PM). Ipswich Ware sherds and bronze strap-end with silver wire spirals and niello inlay (S. Pagan).

Bawburgh (Site 25704) (+IA, RB). Pin (R. Budds).

Bracon Ash (Site 28735) (+MED). MS/LS pseudo-coin brooch (nummular), c. AD 830-50 (A. Womack).

Bracon Ash (Site 29304). 9th C. disc brooch with backward-turning animal (J. Kedge).

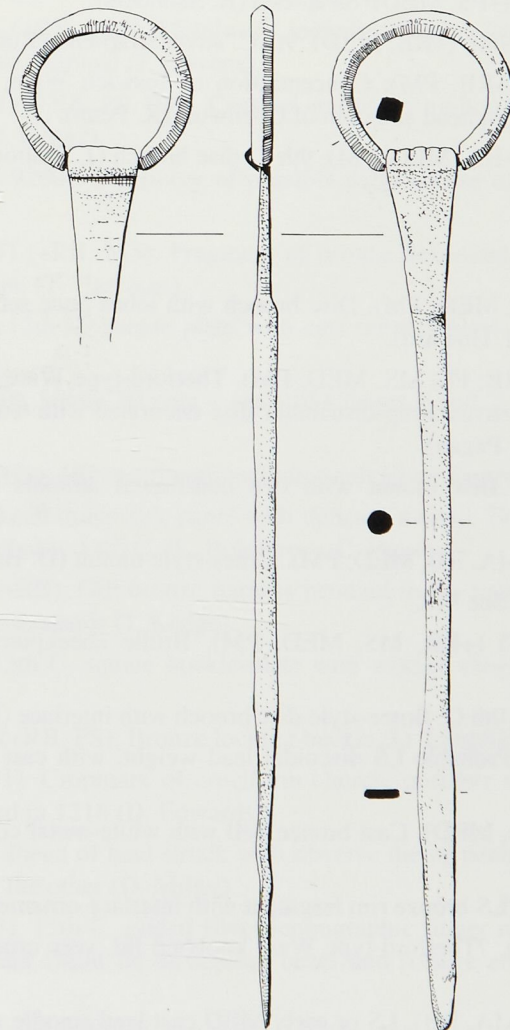


Fig. 3
Middle Saxon ringed pin from Brooke. Scale 1:1

- Bracon Ash* (Site 28733) (+RB, LS, MED, PM). Ansate brooch (A. Womack).
- Brooke* (Site 28863). 9th C. ringed pin (Fig. 3), a Viking import like examples from Hedeby and Birka (D. Bennett).
- Cringleford* (Site 16229) (+BA). Coin of Eadwald (c. AD 796-798), moneyer Eadnoth (D. Woollestone).
- Feltwell* (Site 28788). Pin with unusual wedge-shaped head, decorated with ring-and-dot (E. Secker).
- Frettenham* (Site 28975) (+RB, MED). Buckle pin or stud (Davidson).
- Hevingham* (Site 29292). 9th C. disc brooch with backward-turning animal (B. Mathewson).
- Holme Hale* (Site 28852) (+PS, MED). Strap-end (R. Saunders).
- Massingham, Gt.* (Site 28960) (+RB, MED). 9th C. silver strap-end (Robinson).
- Methwold* (Site 23120) (+RB, PM). Concentration of Ipswich Ware, zoomorphic strap-end with silver inlay, faceted pin head and coin of Coenwulf (K. Penn).
- Mulbarton* (Site 28851) (+BA, MED, PM). 9th C. disc brooch (J. Bratton).

LATE SAXON

- Ashill* (Site 28571) (+RB, MED, PM). Disc brooch with lobes once set with glass pellets, and strap-end (R. Saunders, M. Howard).
- Barwick* (Site 28705) (+RB, PS, MS, MED, PM). Thetford-type Ware sherds, 10th C. pewter disc brooch and bronze convex strap-distributor disc decorated with leaf-shaped motifs, possibly inlaid with enamel (S. Pagan).
- Bawburgh* (Site 29204). Box mount with two confronted animals meeting in centre (G. Aldborough).
- Besthorpe* (Site 29171) (+IA, RB, MED, PM). Urnes-style mount (D. Harty).
- Bracon Ash* (Site 28735). See MS.
- Bracon Ash* (Site 28733) (+RB, MS, MED, PM). Bridle cheekpiece and box mount (A. Womack).
- Fakenham* (Site 28965). 10th C. Borre-style disc brooch with interlace (F. Brown).
- Garvestone* (Site 8848). Probable LS discoidal lead weight, with cast chevron decoration on one face (R. Saunders).
- Gayton* (Site 3592) (+RB, MED). Cast bronze bell with white-metal coating and twelve triangular openings (J. Wells).
- Hethersett* (Site 29094). ?LS bronze rim fragment with interlace ornament (M. Murrell).
- Narborough* (Site 28324). ?Thetford-type Ware knobbed lid, very crudely made with incised decoration (C. Brown).
- Ringstead* (Site 28478) (+IA, RB). LS or early MED cast lead spindle whorl with dot and zig-zag decoration (M. Gibbon).
- Ryburgh, Lt.* (Site 29252). 11th C. box- or stirrup-mount, with quadruped in relief (R. Chamberlin).
- Swardeston* (Site 29293). 10th C. openwork bronze strap-end with Winchester-style decoration (A. Kedge).

Walton, E. (Site 3768) (+NEO, IA, RB, MS, MED). Box mount with an unusual flange and Ringerike-style ornament (S. Brown).

Wiveton (Site 29162) (+RB). Convex disc brooch, Viking import, Jansson Type IIIc (J. Stevens).

MEDIEVAL

Barwick (Site 28705) (+RB, PS, MS, LS, PM). MED pottery, ring brooch, 13th C. casket mount and buckle (S. Pagan).

Besthorpe (Site 29171) (+IA, RB, LS, PM). Rolled-up silver coin, barrel padlock, padlock key, 13th C. casket strip, weights, lead seal matrix, cauldron feet (D. Harty).

Blakeney (Site 29163) (+RB, PM). Metalwork including leather-binding stamp, signet ring, buckles and knife-handle terminal (J. Stevens).

Bracon Ash (Site 28711) (+RB, PS, PM). Crushed and partly molten censer or shrine fragment; gilded silver; 13th C. (J. Kedge).

Buckenham, New (Site 9200). Discovery of possible early course of town ditch with worked timbers (T. Rutledge).

Creake, N. (Site 25777) (+RB, MS). Fragment of bronze decorated disc with cast low relief vine scrolls. Romanesque (T. Harcourt).

Earlham (Site 29871). 13th C. buckle plate with cast relief dragon, originally enamelled (M. Page).

Elmham, N. (Site 17230). Henry III coin – mule of Classes 1 and 2, AD 1248, not previously recorded (G. Parsons).

Emmeth (Site 28956). Coins and metalwork including gilt silver finger ring (M. Carlile).

Harling (Site 28936). Lead openwork panel with delicate tracery. From church window, used as ventilation panel. Probably 14th C. (L. Bolderrow, C. Frost).

Keswick (Site 28665) (+RB). Gilt bronze harness pendant in the form of a moulded lion rampant. A particularly fine example (J. Kedge).

Leziate (Site 28955). 13th C. square buckle-plate with winged dragon facing right on enamelled ground (J. Wells).

Roudham (Site 28778) (+RB, PS). Bronze locking buckle (D. Langfield).

Rudham, E. (Site 29031). Cropmark of cruciform church, possibly the original priory church which moved to Coxford in 1216 (D. Edwards).

Westacre (Site 28744). Piece of lead struck with obverse die of penny of Stephen on one side and with reverse die on the other (D. Miller).

Weybourne (Site 29097). 15th C. gilded silver iconographic finger ring with clasped hands at back of loop, Virgin and Child on hexagonal bezel and foliage engraved on shoulders (A. Wright).

Wighton (Site 11320). Cropmarks of watermill (D. Edwards).

POST-MEDIEVAL (Fig. 4)

Ashill (Site 29028). Silver hawk-ring inscribed 'of Clement Paston Esq'. 16th C. (R. Saunders).

Middleton (Site 28957). Lead disc, marked for sundial. Probably 16th/17th C. (R. Baxter).

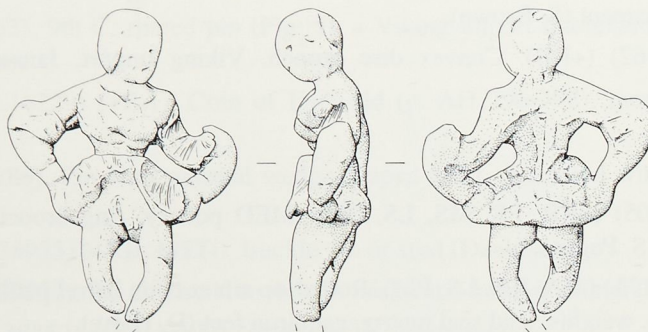


Fig. 4
Post-medieval figurine from Mulbarton. Scale 1:1

Mulbarton (Site 28851) (+BA, MED). Early post-Medieval lead figurine of female raising skirt (Fig. 4) (J. Bratton).

Shelton (Site 28779). Silver head-dress pin, first quarter of 17th C., engraved foliage, flower and leaf, and initials A. C. (V. Jarrett).

Tivetshall St. Mary (Site 11022). Iron shoe patten found beside Patten Lane (P. Emery).

Welney (Site 28954). Bone sledge runner made from left radius of horse (G. Law).

UNDATED

Bawburgh (Site 29053) (+PAL, NEO, BA, IA, PM). Human skeletal remains in gravel pit (J. Bown).

Thetford (Site 29114) (+BA). Bronze mouthpiece for musical instrument or bosun's whistle (S. Gray).

Correction to 1991 list

Wymondham (Site 9437). The RB cockerel figurine has been reidentified as part of a MED tap.

EXCAVATIONS AND SURVEYS IN NORFOLK 1992

Edited by David Gurney

This annual report comprises summaries of archaeological excavations, fieldwork and surveys carried out during the year. As it is often several years before post-excavation work is completed and a full report is published, these summaries provide a useful guide to current archaeological research in the County.

Sites are listed alphabetically by parish, and their locations are shown on Fig. 1. The directors of excavations, organisations involved, the intended place for the deposition of finds and intended place of publication are listed, where known. The following abbreviations are used:- NAU – Norfolk Archaeological Unit; NLA – Norfolk Landscape Archaeology; NCM –