

ARCHAEOLOGICAL FINDS IN NORFOLK 1989

Edited by David Gurney

This is a selection of important finds, details of which have been entered onto the Sites and Monuments Record in 1989, maintained at the Norfolk Archaeological Unit (N.A.U.) at Gressenhall and the Castle Museum, Norwich (N.C.M.). This may be consulted by appointment.

The entries are arranged by period, and within each period by parish alphabetically. Grid references have been omitted at the request of finders. Where material of other periods is recorded, this is shown by, for example, (+PAL, RB).

Period abbreviations are as follows: PREHIS prehistoric; PAL/UPAL/LPAL Palaeolithic/Upper/Lower; MESO Mesolithic; NEO Neolithic; BKR Beaker; BA/EBA/MBA/LBA Bronze Age/Early/Middle/Late; IA Iron Age; RB Romano-British; PS Pagan Saxon; MS Middle Saxon; LS Late Saxon; MED Medieval; PM post-Medieval; U undated.

The Norfolk Archaeological Unit and the Castle Museum are most grateful to all those who bring in finds for identification, thereby contributing information to the SMR and this annual list. Illustrations are by John Wymer (Figs 1-3), Susan White (Figs 4-7 No.1), Steven Ashley (Fig.7, No.2) and Kenneth Penn (Fig. 8).

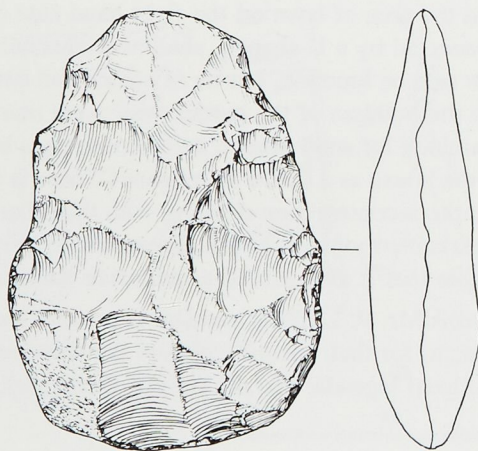


Fig. 1
Palaeolithic handaxe from Attleborough. Scale 1:2

PALAEOLITHIC

Attleborough (Site 25257). A flat butted cordate handaxe (Fig.1) is the first from the parish. Its rolled and stained condition suggests that it derives from a gravel deposit. The type is often associated with industries of Mousterian affinities (*c.*100,000-50,000 years), but is not necessarily diagnostic (E.C. Amos).

Dereham, E. (Site 25485). Primary flake (J. Lightning).

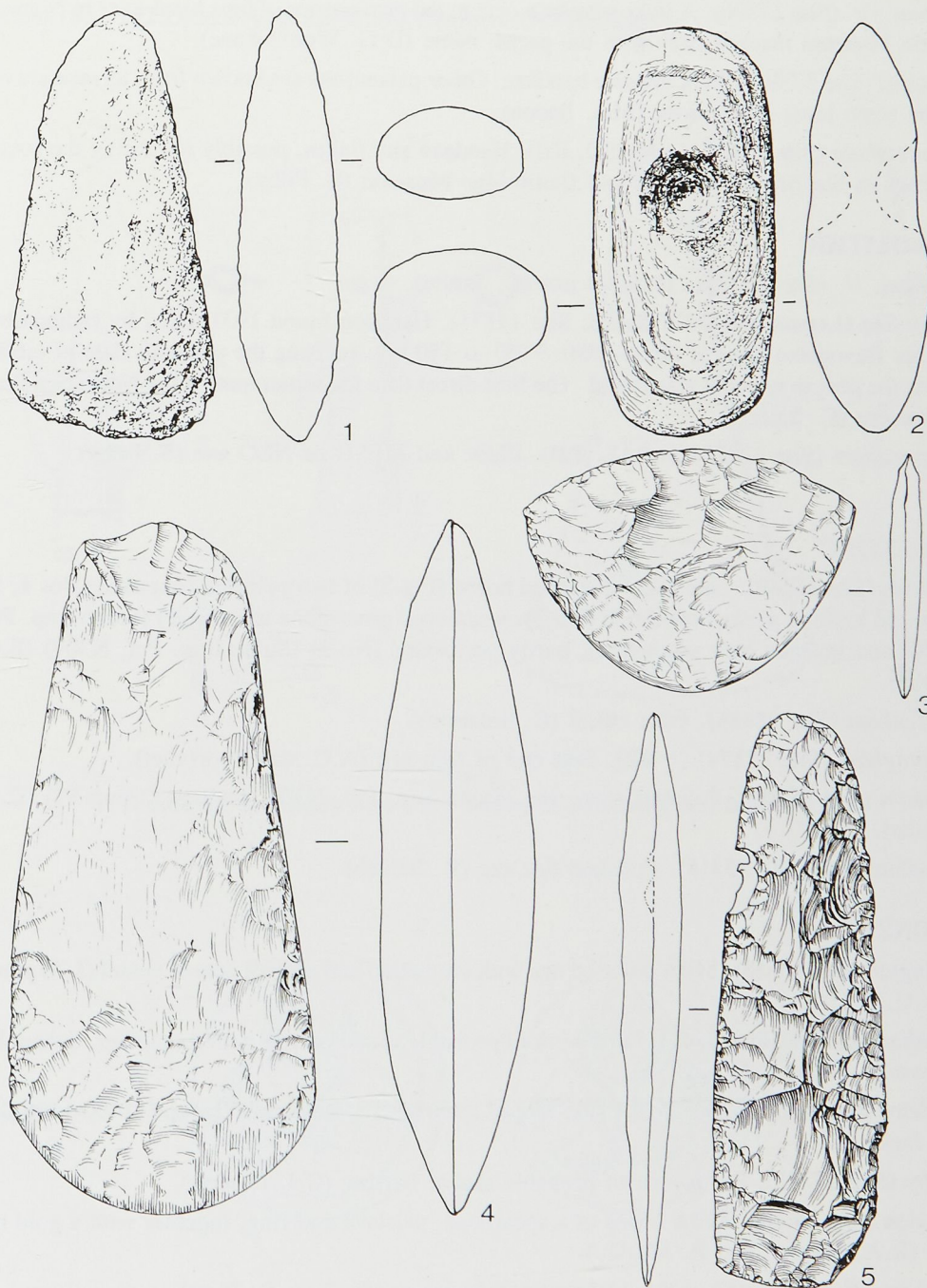


Fig. 2
Neolithic hoard from Banham. Scale 1:2

Drayton (Site 25514). A flint blade core and earlier finds confirm the presence of a later PAL/early MESO long blade industry (S. Filby).

Melton, Gt. (Site 25306). A flake may be a clue to the provenance of four hand-axes in Norwich Castle Museum marked only with the parish name (D.G. Woollestone).

Thetford (Site 5759). LPAL cordate handaxe. Other palaeoliths are known from terrace gravels at the same level in Thetford (Mrs. Bacon).

Wymondham (Site 23825) (+MESO, RB). Handaxe and flakes, possibly indicating the source of finds in the British Museum and Cambridge Museum (S. Filby).

MESOLITHIC

Elmham, N. (Site 25075). Tranchet axe (C. White).

North Sea (Leman and Ower Sands; Site 11171). Harpoon found 1931 dated by radiocarbon to Late Devensian Zone II (OxA-1950: 9790 ± 150 bc), revising the previous date of c.6500 bc for the peat in which it was found. The first direct date for settlement on the North Sea Plain in that era (C. Smith).

Wymondham (Site 23825) (+PAL, RB). Blade and MESO or NEO axe (S. Filby).

NEOLITHIC

Banham (Site 25649). Late NEO disturbed hoard (Fig.2) of two polished flint axes (Nos 4, 5), discoidal knife in perfect condition (No.3), weathered greenstone axe (No.1) (Stone Imp. Pet. N308) and igneous rock mace-head, partly perforated (No.2) (Stone Imp. Pet. N307) (E.C. Clarke).

Bradenham (Site 25486). Flint chisel (C. Simmons)

Felmingham (Site 25174) (+RB). Butt end of flint axe (A.C. van Poortvliet).

Hoveton (Site 25109). Polished stone axe (Stone Imp. Pet. N306, perhaps Group VI) (C.R. Shoults).

Woodbastwick (Site 25318). Polished flint axe (B. Ballish)

BRONZE AGE

Alpington (Site 10318). MBA collared urn with cremation and a small coarse vessel (J. Wymer, N.A.U.).

Burnham Market (Site 25347). Earthwork of probable round barrow near to another, Scheduled barrow (J. Wymer, N.A.U.)

Carleton Rode (Site 25290). MBA side-looped spearhead of Rowlands Group I (1400-1100 BC) (A. Jackson).

Colby (Site 25275). Earthwork of probable saucer barrow (C.J. Daniels).

Croxton (Site 24606). MBA hoard of a spearhead, palstave and ring, together with a gold bar torc (R.A. Sparkes and R. Morley).

Elmham, N. (Site 1100). LBA socketed axe fragment (D. Fox, P. West)

Field Dalling (Site 21317) (+RB, PS). Blade end of LBA socketed spearhead (Fig.3, No.1) (E. Hotblack)

Hindringham (Site 25157) (+LS). Butt-end of MBA rapier or dagger (Fig.3, No.3) (P. West).

Hindringham (Site 25454). LBA spearhead fragment with wood *in situ* (Fig.3, No.2) (P. West).

Mattishall (Site 25629). EBA flat axe (Fig.3, No.4) (R. Reynolds).

Merton (Site 25265). LBA socketed axe fragment (N. Phillips).

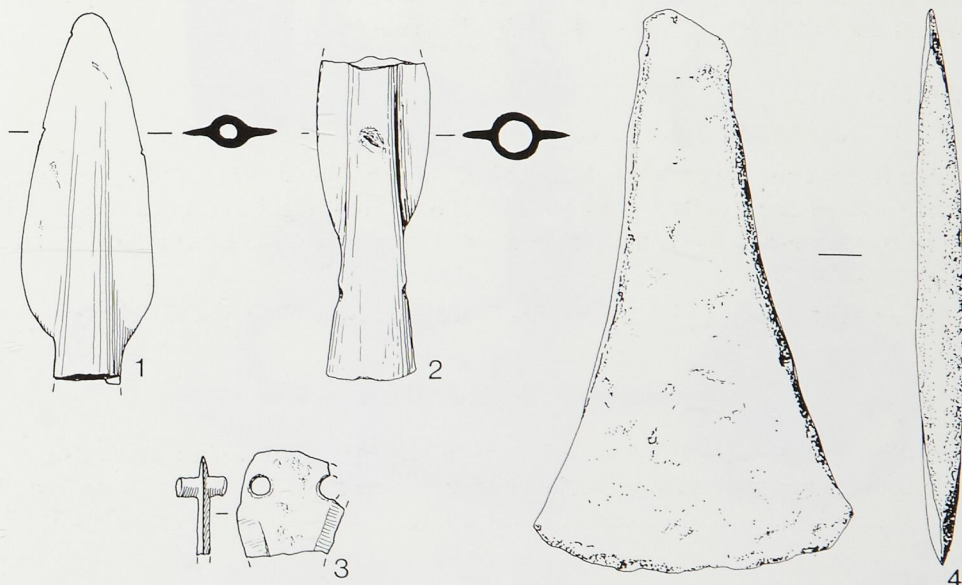


Fig. 3

Bronze age metalwork from Field Dalling and Hindringham. Scale 1:2



Fig. 4

Iron Age bronze die from Creake. Scale 1:1

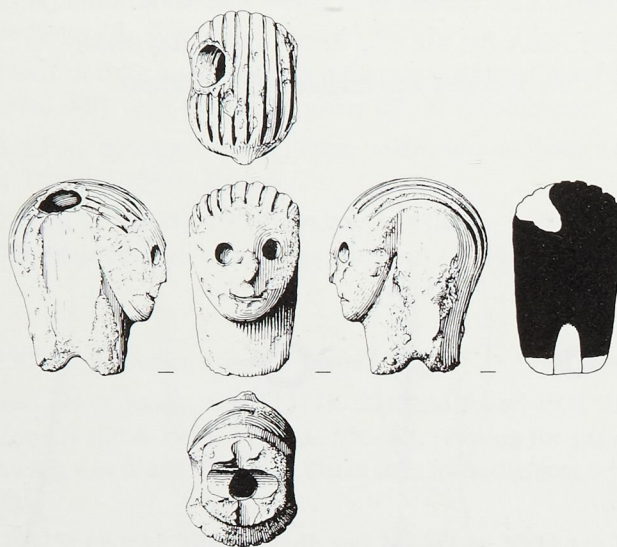


Fig. 5

Iron Age anthropoid knob from Gillingham. Scale 1:1

IRON AGE

Bawsey (Site 3326) (+MS). Electrum torc fragments (S. Brown).

Beachamwell (Site 4530) (+RB). Icenian silver coin, Pattern-Horse type ANTED (S. Brown).

Binham (Site 25464) (+RB). Icenian silver coin. Face-Horse type (P. West).

Carbrooke (Site 25084). Gold stater (British J) (N. Phillips).

Creake, N. (Site 1913) (+RB). Bronze die (Fig.4, with idealised impression to right) for decorative bronze discs, perhaps to be attached to leather. Also a silver coin Pattern-Horse AESV, and pottery (C. Pears, P. Searle).

Fincham (Site 14530) (+RB). Silver coins. Bury Type A Face-Horse; Pattern-Horse ECEN or ED; Corieltauviian (Coritanian) VEP[-CO] (C. Sproule).

Fincham (Site 25584). La Tène I brooch (C. Sproule).

Gillingham (Site 25431). Bronze knob (Fig.5) possibly from anthropoid sword or dagger (L. Carriage).

Hingham (Site 25626). Terret fragment (R. Chamberlin).

Ryburgh, Gt. (Site 11360). Bronze pole-tip or mount, probably IA or RB vehicle fitting (M.J. Savory).

Shotesham (Site 25613) (+MS). IA or RB bronze harness-loop or miniature terret (C. Pears).

Snettisham (Site 1487) (+RB). Electrum torc fragments and two gold staters (British A, British J) (C. Hodder).

Snettisham (Site 25184). Icenian silver coin. Early Face-Horse type (C.Hodder).

Snettisham (Site 25249). Two cast bronze fittings (one illustrated, Fig.6), in form of birds. Socketed. Possibly drinking-horn mounts (C. Hodder).

Wymondham (Site 25297) (+RB). Gold stater (British J) (R. Chamberlin).

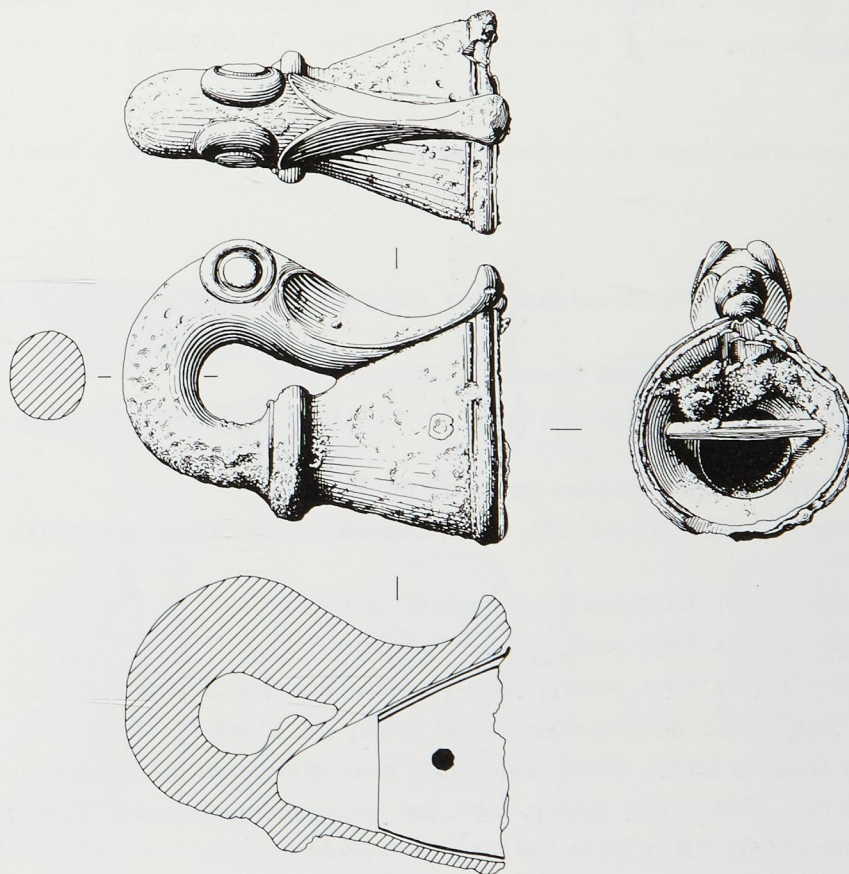


Fig. 6

Iron Age ?drinking horn mount from Snettisham. Scale 1:1

ROMANO-BRITISH

Attlebridge (Site 25137). Centre-loop cosmetic palette (M. Bone).

Bawburgh (Site 25131). Reversed fantail brooch (Fig.7, No.1) (J. Anderson).

Beachamwell (Site 4530) (+IA). Coins, brooches, bracelets, finger-rings, hairpins, pottery (S. Brown, B. Carter).

Beeston Regis (Site 25427). Enamelled triangular plate brooch (Coleman).

Binham (Site 25464) (+IA). Pottery, coins, brooches, metalwork (P. West).

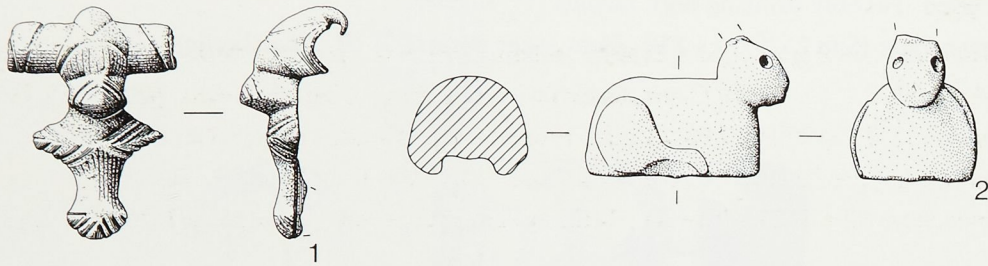


Fig. 7

Romano-British brooch from Bawburgh and model cat from Swanton Morley. Scale 1:1

Burgh Castle (Site 25319). Carved bone plate, possibly from casket mount (? or LS or early MED) (C. Simeons).

Costessey (Site 25166). Dolphin brooch (L. Carriage).

Cranwich (Site 25479). Silver bronze double brooch in form of cockerel. Mid-1st C. AD (M. Willis).

Diss (Site 13704). Bronze miniature votive axe (R. Parry).

Field Dalling (Site 21317) (+BA, PS). Coins, enamelled bridge brooch, pottery (D. Baldry, T. Hudson).

Fincham (Site 25093). Enamelled hare brooch (C. Sproule).

Fincham (Site 25162). Silver snake ring (C. Sproule).

Fincham (Site 25462). Tiles, pottery, coins, brooches, bracelets (S. Brown).

Hempnall (Site 25182). Building materials and pottery (M. Cubitt).

Hopton on Sea (Site 25088). Bronze key handle, toilet spoon, coins (P. Rilings).

Kempstone (Site 13042). Tile, pottery, coins, late openwork bronze buckle (T. Hudson).

Loddon (Site 25130). RB or PS bronze tweezers (Andrews).

Morley (Site 25460). Aesica and T-shaped brooches (M. Bone, R. Chamberlin).

Postwick (Site 25172). Tortoise on bow brooch (R. Carriage).

Quidenham (Site 25477). 'Thealby' type headstud brooch (L. Bolderrow).

Ryburgh, Gt. (Site 11360). See Iron Age.

Shotesham (Site 25613) (+MS). See Iron Age.

Snetterton (Site 25478). Oval glass centre-boss brooch (L. Bolderrow).

Snettisham (Site 1487) (+IA). Lead negroid head (C. Hodder).

Snettisham (Site 25249). See Iron Age.

Swanton Morley (Site 17486). Bronze model cat (Fig.7, No.2), coins, brooches and metalwork (P. James, B. Sharrock).

Syderstone (Site 25299). Tile, pottery, coins and brooch (P. West).

Tivetshall St. Mary (Site 11008). Lead die with graffiti (D. Jordan).

Walsingham, Gt. (Site 25133) (+MED). Bronze bracelet fragment. 4th C. light bangle type (D. Fox).

Walsingham Gt./Wighton (Site 25399). Building materials, pottery, ?tessera (Barret, Vines).

Wighton (Site 3980) (+PS). Coins, brooches, terrets, finger-rings, bracelets, pottery (D. Fox).

Winfarthing (Site 4251) (+PS). Coins, bronze pin and spoon, pottery (R. Parry).

Winfarthing (Site 25416). Bronze horse head escutcheon from bowl (R. Parry).

Wymondham (Site 23825) (+PAL, MESO). Trumpet brooch, cosmetic palette (S. Filby).

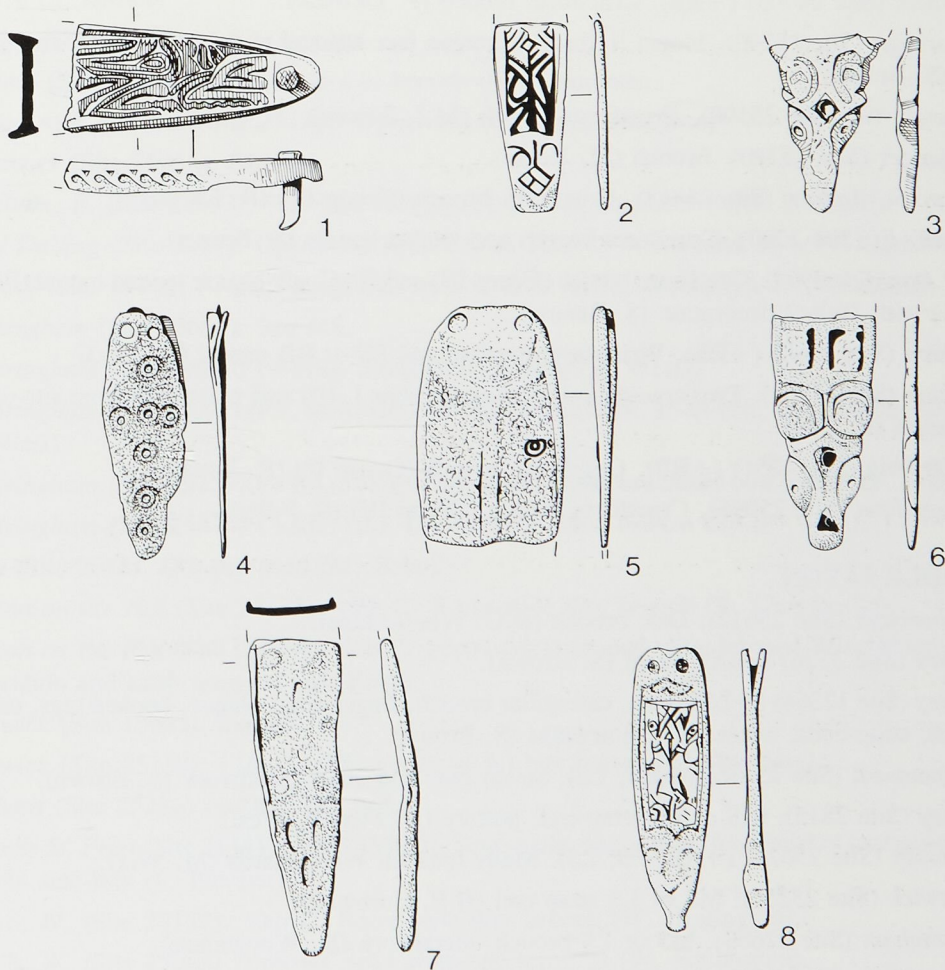


Fig. 8

Pagan Saxon mount from Westacre (No. 1)
and Middle Saxon strap-ends from Walpole St. Peter (Nos 2-8. Scale 1:1

PAGAN SAXON

- Bradwell* (Site 25295). Cruciform brooch (J. Leech).
- Field Dalling* (Site 21317) (+BA, RB). Small long brooch (D. Baldry, T. Hudson).
- Gunthorpe* (Site 25135). Cruciform brooch (D. Fox).
- Hindringham* (Site 25071) (+MS, LS). Two cruciform brooch fragments (P. West).
- Hindringham* (Site 25474) (+RB, LS). Radiate-headed brooch of Frankish/Kentish type (P. West).
- Holkham* (Site 1780). Cruciform brooch (Group V) and wristclasp (D. Fox).
- Holverstone* (Site 17367). Florid cruciform from AP ring-ditch site (K. House).
- Loddon* (Site 25130). See Romano-British.
- Long Stratton* (Site 25467). Square-headed brooch and bronze wristclasp plate (M. Fry).
- Martham* (Site 24405) (+RB). Cruciform brooch (P. Dawson).
- Oxborough* (Site 15140). Mount in form of human face flanked by birds from AP ring-ditch site (S. Brown).
- Ryburgh, Gt.* (Site 25590). Cruciform brooch (M.J. Savory).
- Shelfanger* (Site 25340). Brooch (M. Noble).
- Thorpe St. Andrew* (Site 25313). Cruciform brooch (Group IV) (R. Carriage).
- Walton, E.* (Site 1060). Cruciform brooch and bucket handle (S. Brown).
- West Acre* (Site 3954). Cruciform brooch (Group III) and 7th C. gilt bronze lentoid mount (Fig. 8, No.1) with Style 2 decoration (S. Brown).
- Wighton* (Site 3980) (+RB). Wristclasp eyeplate and PS or RB mount (D. Fox).
- Wighton* (Site 17403). Two cruciform brooches (Groups I, III) and wristclasp from site of inhumation (D. Fox).
- Winfarthing* (Site 4251) (+RB). Cruciform brooch (Group I?) (R. Parry).
- Wymondham* (Site 25096). Cruciform brooch (Group IV) (S. Filby).

MIDDLE SAXON

- Attleborough* (Site 25612). Disc brooch (D.G. Woollestone).
- Bawsey* (Site 3326) (+IA). Sceat (S. Brown).
- Bawsey* (Site 12364) (+LS). Pins, caterpillar brooch, finger-ring, plaque, hooked tags, casket mount, strap-ends, tweezers, five sceattas (S. Brown).
- Beachamwell* (Site 25476) (+RB, LS). Seven pins and other metalwork (S. Brown).
- Beetley* (Site 2815). MS or LS strap-end, pottery (D. Fox, P. West).
- Costessey* (Site 25624) (+RB, PS, LS). Many Ipswich Ware sherds (M. Wix).
- Crostwick* (Site 25255). MS or LS strap end (H.P. Cornwall).
- Heckingham* (Site 22663). MS or LS brooch, metalwork (K. Woodhouse).
- Hindringham* (Site 24909) (+LS). Strap-ends, brooches, pins, sceat, pottery (P. West).
- Hindringham* (Site 25071) (+PS, LS). Pins, forgery of solidus of Louis the Pious, sceat, brooches, pottery (P. West).
- Postwick* (Site 13603). MS or LS small long brooch (R. Crawford).

- Shotesham* (Site 25613) (+IA/RB). Enamelled disc (C. Pears).
- Spixworth* (Site 25101). Disc brooch with backward turning animal (R.J. Hilliard).
- Stibbard* (Site 25286) (+LS). MS or LS silver strap-end with animal head terminal. Niello inlay (M.J. Savory).
- Walpole St. Peter* (Site 21341) (+LS, MED). Pins, strap-ends (Fig.8, Nos 2-8), sceat (F. Bamber).
- West Acre* (Site 3954). See Pagan Saxon.
- Winch, W.* (Site 25465). Sceat (W. Heslington).

LATE SAXON

- Bawsey* (Site 12364) (+MS). Hooked tags, ?tweezers, strap-ends, metalwork (S. Brown).
- Beachamwell* (Site 25476) (+RB, MS). Strap-end and other metalwork (S. Brown).
- Beachamwell* (Site 25267) (+RB, MED). Strap-end, box/furniture fitting, silver finger-ring, pottery (S. Brown).
- Beetley* (Site 2815) (+MS). See MS.
- Blofield* (Site 25248). Borre-style disc brooch (G. Simmonds).
- Buxton with Lammas* (Site 25136). Openwork box mount (M. Bone).
- Croswick* (Site 25255). See MS.
- Dereham, E.* (Site 25593). ?LS lead rectangular brooch fragment (N.G. Donmall).
- Field Dalling* (Site 3167). Openwork strap-end of 10th C. Winchester style (T. Hudson).
- Harling* (Site 25116) (+RB). Ringerike-style 11th C. bridle cheekpiece (P. Woollard).
- Heckingham* (Site 22663). See MS.
- Hindringham* (Site 24909) (+MS). Strap-ends, pottery (P. West).
- Hindringham* (Site 25071) (PS, MS). Hooked tags, box mount, strap-end, disc brooch, pottery (P. West).
- Hindringham* (Site 25157) (+BA). Ringerike-style animal ornament box mount (P. West).
- Hindringham* (Site 25474) (+RB, LS). LS or early MED bronze key (P. West).
- Lyng* (Site 3048). Gilt pin head (M. Bone).
- Morton on the Hill* (Site 25475). 10th C. Borre-style disc brooch (R. Chamberlin).
- Morton on the Hill* (Site 25247). 11th C. openwork strap-end with debased Winchester-style decoration and knob terminal (M. Bone).
- Postwick* (Site 13603). See PS.
- Postwick* (Site 25158). 11th C. (?Ringerike style) box mount (R. Crawford).
- Stibbard* (Site 25286) (+MS). See MS.
- Walpole St. Peter* (Site 21341) (+MS, MED). Strap-ends, finger-ring, foot/finial of casket/vessel, ?bridle side-link (F. Bamber).
- Winch, W.* (Site 25155). 10th C. Borre-style disc brooch (W. Heslington).
- Winch, W.* (Site 25068). ?'model' lead strap-end terminal (W. Heslington).

MEDIEVAL

- Costessey* (Site 16398). Sword chape (K.P. Feeny).
- Cromer* (Site 25176). 15th C. bronze ewer spout in form of dragon head (Bumfrey).

- Diss* (Site 25417). 12th/13th C. lead seal matrix (R. Parry).
- Fincham* (Site 25161). 14th C. strap or belt fitting (C. Sproule).
- Fincham* (Site 25578). Four seal matrices: 13th C. inscribed S'ROGERI F(IOHI)S; 13th C. SIGILL'ROGERI'FIL'HVGOIS; 13th/14th C. S'ALICE V(XO)R ROGERI; 14th C. S'WILL-H-CVRTF[]S (C. Sproule).
- Holverston* (Site 25107) (+RB, LS). 13th C. buckle, harness pendant (K. House).
- Keswick* (Site 25600). 12th/13th C. bronze swivel from ?dog leash (N.G. Donmall).
- Postwick* (Site 25177). Bronze seal matrix (R. Carriage).
- Postwick* (Site 25178). Bronze seal matrix (G. Kemp).
- Salhouse* (Site 25317). 14th C. stone window tracery ?used as mud weight (Broads Authority).
- Theford* (Site 17268). 14th C. seal matrix inscribed S'IOHIS.DE.CORNWALEVS, made from a Roman coin, a sestertius of Trajan (B. Fisher).
- Tuttington* (Site 11662). 15th C. bronze ewer spout in form of dragon head (M. Bone).
- Walsingham, Gt.* (Site 25133) (+RB). 14th C. buckle, ?sword belt fitting (D. Fox).
- Walsingham, Lt.* (Site 25466). Harness fitting (B. Francis).
- Wattlington* (Site 25341) (+RB). Coins, silver and bronze ring brooches, metalwork (L. Jarvis).
- Wicklewood* (Site 25269). Coin hoard of Stephen and Henry II (M. Bone, R. Chamberlin).

UNDATED

- Happisburgh* (Site 25264). Pseudo hanging bowl (D. Chaplin).
- Ludham* (Site 25185). Gold bracelet (BA, RB or PM) (G. Cook).