

- Evison, V.I. 1977 'An Enamelled Disc from Great Saxham', *Proc. Suffolk Inst. Archaeol.* 34, 1-13.
 Silvester, R.J. 1988 *The Fenland Project, Number 3: Marshland and the Nar Valley, Norfolk*, E. Anglian Archaeol. 45.
 Warner, P. 1987 *Greens, Commons and Clayland Colonisation: The Origins and Development of Green-side Settlement in East Suffolk* (Leicester).

ARCHAEOLOGICAL FINDS IN NORFOLK 1993

Edited by David Gurney

This is a selection of important finds (from a total of 25,371 object identifications in 1992-3) details of which have been entered onto the Sites and Monuments Record in 1993, maintained at the Norfolk Museums Service Landscape Archaeology Section at Gressenhall and at the Castle Museum, Norwich. This may be consulted by appointment.

The entries are arranged by period, and within each period by parish alphabetically. Grid references have been omitted at the request of finders. Where material of other periods is recorded but not described, this is shown by, for example, (+PAL, RB).

Period abbreviations are as follows: PREHIS prehistoric; PAL/UPAL/LPAL Palaeolithic/Upper/Lower; MESO Mesolithic; NEO Neolithic; BKR Beaker; BA/EBA/MBA/LBA Bronze Age/Early/Middle/Late; IA Iron Age; RB Romano-British; ES Early Saxon; MS Middle Saxon; LS Late Saxon; MED Medieval; PM post-Medieval; U undated. Metal artefacts are of copper alloy (bronze) and Iron Age, Saxon and Medieval coins are of silver unless otherwise stated.

Norfolk Landscape Archaeology and the Castle Museum are most grateful to all those who bring in finds for identification, thereby contributing to the Sites and Monuments Record and this annual list. The assistance of colleagues in other institutions, especially the British Museum and Fitzwilliam Museum, Cambridge, in the identification of finds is gratefully acknowledged. The majority of the finds listed have been found in the course of metal-detector survey, but the list also includes fieldwalking finds and new discoveries of sites either by field observation or by aerial photographic survey.

The illustrations are by Sue White (Figs 1-3) and Steven Ashley (Fig. 4).

PALAEOLITHIC

Morley (Site 29416). Handaxe, black flint, Late Acheulian (M. Bone).

Shropham (Site 30195). Grey flint LPAL handaxe found on pit conveyor belt (J. Lightwing).

Wymondham (Site 23825) (+RB, ES). Handaxe (S. Filby).

MESOLITHIC

Bradenham (Site 29492). ?MESO or ?BA massive shaft-hole implement, with one-sided 'hour glass' perforation (Atkinson).

Hindringham (Site 25071) (+RB, MS, LS, MED, PM). Late MESO microlith, 2 blades/flakes (P. West).

Methwold (Site 29346). MESO, NEO or BA red deer antler mattock (C. Copsey).

NEOLITHIC

Buxton with Lammis (Site 7690). New cropmark evidence indicates that those seen previously

belong to a causewayed enclosure (D.A. Edwards).

Hanworth (Site 18190). Further cropmarks (wedge-shaped end with entrance) of the cursus, first seen in 1986 (D.A. Edwards).

Langley with Hardley (Site 17584). Cropmarks of cursus, adjacent to previously-recorded probable long barrow (D.A. Edwards).

Narborough (Site 29851) (+RB, MED, PM). Early NEO flint laurel leaf and flake (A. Oliver).

Rudham. W. (Site 28131) (+RB, MS, LS, MED). 2 chisel-ended/Petite Tranchet Derivative arrowheads, flaked axe, worked flints and scrapers (D. Fox).

Stalham (Site 29673). Dark green stone axe (J. Cooper).

Stody (Site 29721) (+RB, MED). Early NEO flint laurel leaf and piercer (T. Linford).

BRONZE AGE

Acle (Site 24118) (+RB, MED). Tip of sword/rapier/dagger (P. Dawson).

Ashill (Site 28571) (+RB, MED, PM). Awl (R. Saunders).

Ashwellthorpe (Site 30205) (+RB, ES, MS, MED, PM). Socketed axe fragment (A. Womack).

Attleborough (Site 30101) (+MED, PM). MBA swollen-necked looped pin (C. Atkinson).

Banham (Site 30095). 2 LBA socketed axes (D. Bailey).

Banham (Site 29678) (+RB, PM). LBA awl (E. Crick).

Bawsey (Site 25962) (+MS, LS, MED, PM). Pin with small quoit head (S. Brown).

Brancaster (Site 30123). MBA tubular shafted spearhead (F. Southerland).

Cawston (Site 29841) (+MED). EBA small flanged axe (C. Chesters).

Costessey (Site 29398) (+RB, MED). LBA tanged chisel (M. Miller).

Costessey (Site 29712). LBA socketed knife with attachment holes for haft (M. Miller).

Creake, N. (Site 29428) (+MS, LS, MED, PM). MBA palstave (G. Parsons).

Deopham (Site 29876). ?LBA awl (A. Kedge).

Feltwell (Site 5169). LBA socketed axe and MBA looped palstave from hoard site (D. Woollestone).

Fincham (Site 30053) (+IA, RB, LS, MED, PM). Tanged chisel and chisel blade or haft (C. Sproule).

Fincham (Site 30059) (+IA, RB, ES, LS, MED). Socketed axe blade (C. Sproule).

Foulden (Site 17292) (+IA, RB). Rapier fragment (S. Gray).

Foulden (Site 29880) (+MED). Spear/rapier tip (D. Storey).

Foulden (Site 29774) (+RB). MBA rapier (D. Storey).

Foulden (Site 29773). Butt end of rapier (D. Storey).

Geldeston (Site 29779). MBA side-looped socketed spearhead, the sides blunted as if used for some other purpose (B. Davison).

Hempnall (Site 30189). EBA flanged axe (D. Jordan).

Kettlestone (Site 30044). LBA spearhead fragment (V. Chapman).

Lopham, S. (Site 29679) (+RB, MED). LBA awl (D. Lucken).

Mundford (Site 28202) (+RB, ES, MS, MED). MBA tanged dirk/dagger (R. Sparkes).

- Quidenham* (Site 29885) (+RB, ES, MS, MED, PM). MBA palstave (P. Woollard).
- Ringstead* (Site 30133) (+RB, ES, PM). LBA socketed axe with unusual linear markings on one side (M. Bone).
- Ryburgh, Gt* (Site 23396). MBA socketed spear (M. Savory).
- Shouldham Thorpe* (Site 30235) (+RB, ES, LS, MED, PM). ?BA ring (S. Brown).
- Walsingham, Gt* (Site 29923) (+IA, RB, ES, MS, LS, MED, PM). Rapier blade (D. Fox).
- Walsingham, Gt* (Site 28254) (+RB, MS, LS, MED). Socketed axe (D. Fox).
- Wereham* (Site 30128). EBA flat axe and MBA palstave (K. Everett).
- Woodbastwick* (Site 29362) (+MS, MED). MBA palstave on pot-boiler site (M. Bone).
- Wreningham* (Site 29341). LBA socketed axe (A. Womack).
- Wymondham* (Site 29286) (+MED, PM). MBA chisel (K. Robinson).
- Ring-ditches:** newly-recorded cropmarks include *Bacton* (Site 6904) with possible annexe, *Barton Bendish* (22081), *Billingford* (29827), *Bylaugh* (29570), *Corpusty* (double concentric) (29564), *Cranworth* (29826), *Crosthwick* (29560), *Feltwell* (29698), *Hickling* (29749), *Hockwold cum Wilton* (29699), *Martham* (two) (29628), *Morton-on-the-Hill* (two, and circular enclosure) (29344), *Northwold* (29471), *Rackheath* (with ovoid enclosure) (29561), *Ringstead* (29833), *Sheringham* (29763) with central pit, *Shropham* (perhaps the tumulus recorded in the 19th C) (29472, cf 9030), and *Woodbastwick* (29574) with curious tiny conjoined enclosure (all D. A. Edwards.)

IRON AGE

- Beachamwell* (Site 4530) (+RB, MED). La Tène I brooch, 4th to 3rd C. BC (Fig. 1, No. 2) (S. Brown).
- Besthorpe* (Site 29171) (+RB, MED). Leaf-shaped object, perhaps a 3rd C. BC votive shield (D. Harty).
- Besthorpe* (Site 29690) (+RB, LS, MED, PM). Pot-boiler site (Black Carr Research Group).
- Brinton* (Site 29585) (+PM). Flat-looped terret, enamelled (T. Linford).
- Burgh Castle* (Site 17261) (+RB, ES, MS, LS, MED, PM). Strap-union, with pelleted decoration and originally with coral or enamel stud, 2nd C. BC to early 1st C. AD (D. Fox).
- Costessey* (Site 25624) (+RB, MED, PM). Trinovantian bronze coin of Cunobeline (M. Miller).
- Ditchingham* (Site 22256) (+MED). Icenian gold quarter stater, Late Freckenham type (B. Allen).
- Fincham* (Site 30053) (+BA, RB, LS, MED, PM). Icenian gold stater, Early Freckenham type (C. Sproule).
- Fincham* (+BA, RB, ES, LS, MED). 3 Icenian coins: Pattern/Horse, Boar/Horse, Face/Horse (C. Sproule)
- Flitcham with Appleton* (Site 29853) (+RB, MED). ?Shield binding (J. Burke).
- Foulden* (Site 17292) (+BA, RB). Early IA ring-necked pin, Nauheim brooch 75-25BC, strap-fitting, small involuted pin 5th to 2nd C. BC, LBA or EIA razor (S. Gray).
- Gayton* (Site 29713) (+RB, ES, MED, PM). La Tène brooch, late 5th to early 4th C. BC (Fig 1, No. 1) (S. Brown).
- Hainford* (Site 30188) (+MED, PM). Lead miniature 'Celtic' head (D. Johnson).

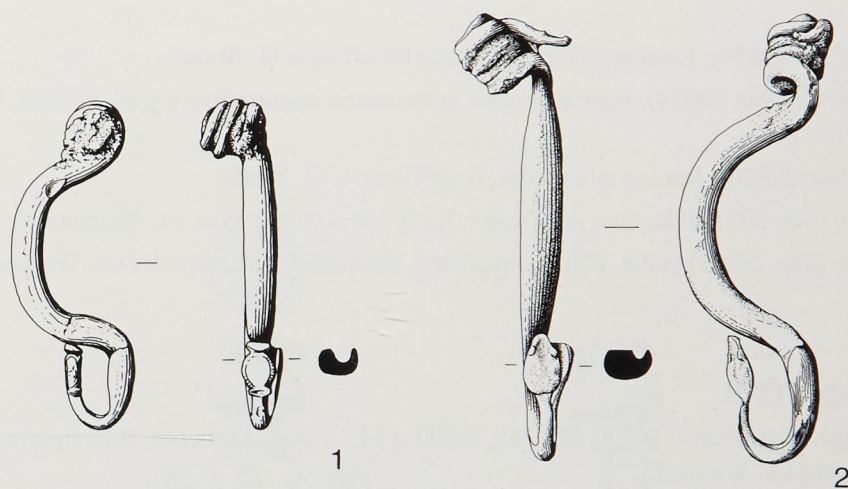


Fig. 1

Iron Age brooches from Gayton (No. 1) and Beachamwell (No. 2). Scale 1:1.

Holme Hale (Site 16285). Trinovantian gold stater, Late Whaddon Chase type (R. Saunders).

Loddon (Site 17808) (+RB). Terret fragment, with ends ?sharpened for re-use or ?from a worn bad casting (M. Bone).

Marham (Site 30141) (+BA, RB, LS, MED, PM). Scatter of pottery with impressed/stabbed decoration (R. Ludford).

Mulbarton (Site 30022) (+RB, MED, PM). Icenian silver coin, Bury B type (J. Bratton).

Mundham (Site 29312) (+RB, MS, LS, MED, PM). Terret (N. Donmall).

Roudham (Site 1057). Ring-headed pin, 600-400 BC (A. Martin).

Saham Toney (Site 29430) (+RB, MED). Icenian silver coin, Boar/Horse C (J. McLean).

Shernborne (Site 28124) (+RB, MED). Decorative binding (J. Burke).

Shouldham (Site 24083). Cropmarks of 2 ?roundhouses in ?IA enclosure (D. A. Edwards).

Snettisham (Site 29375). Icenian silver coin, new type. Obv. Celtic god head. Rev. Celticised horse right (J. Burke).

Snettisham (Site 29376). Enamelled horse-trapping fragment from a ?strap union (J. Burke).

Snettisham (Site 29664). Cast bronze coin, Trinovantian Thurrock type, Apollo head variety (J. Burke).

Snettisham (Site 29659). Icenian silver coin, early Face/Horse (J. Burke).

Walsingham, Gt (Site 29924). Icenian leaded brass stater, ancient forgery of Norfolk Wolf type, pierced (D. Fox).

West Acre (Site 29920). Icenian silver coin, Boar/Horse C (J. Wells).

Wreningham (Site 30210). Icenian gold stater, Early Freckenham type (A. Womack).

Wreningham (Site 28495) (+RB, ES). Domed stud, decorated with triquetra (A. Womack).

ROMANO-BRITISH

Ashwellthorpe (Site 30205) (+BA, ES, MS, MED, PM). Coins, brooches, lion figurine, military harness pendant (A. Womack).

Besthorpe (Site 29740) (+MED). Pottery scatter (Black Carr Research Group).

Bracon Ash (Site 29899) (+LS, MED). Protected loop terret (A. Kedge).

Broome (Site 29684) (+LS, MED, PM). Protected loop terret (B. Davison).

Caistor St Edmund (Site 9815). Goat figurine (D. Sutton).

Cawston (Site 29813) (+LS, MED). Military stud (D. Coleman).

Costessey (Site 25624) (+IA, MED, PM). Bird figurine (M. Miller).

Creake, N. (Site 30240) (+ES, MS, LS, MED). Animal-head terminal from cosmetic mortar (B. Grieves).

Cringleford (Site 16230). Complete patera (G. Andrews).

Deopham (Site 29550). Dispersed gold and silver coin hoard, 28 coins to AD 375-395 (S. Chase, J. Carroll).

Downham West (Site 4233). Two ?Barnack stone pier supports or statue pedestals (one found in 1982), each c. 46 cm square and 24 cm tall, from site of Roman field systems adjacent to the Fen Causeway and Roman canal (Johnson).

Fincham (Site 30059) (+BA, IA, ES, LS, MED). 8 brooches, spoon, pin, late belt-stiffener (C. Sproule).

Hillington (Site 29913) (+ES, MS, LS, MED, PM). Knife/razor handle (I. and K. Mickleburgh).

Hindringham (Site 28005) (+NEO, BA, MED, PM). Silver leopard head, ?from vessel (P. West).

Hockwold cum Wilton (Site 29700). Cropmarks of ?Roman enclosures (D. A. Edwards).

Kelling (Site 29805). Bronze coin hoard, 12 *folles* of Maximian Herculus and Constantine I, AD 307-310/313 (G. Abel).

King's Lynn (Site 5499). Elaborate and unusually-decorated protected loop terret (Fig. 2) (P. Sainty).

Letheringsett with Glandford (Site 29422) (+LS, MED, PM). Double-looped terret (D. Coleman).

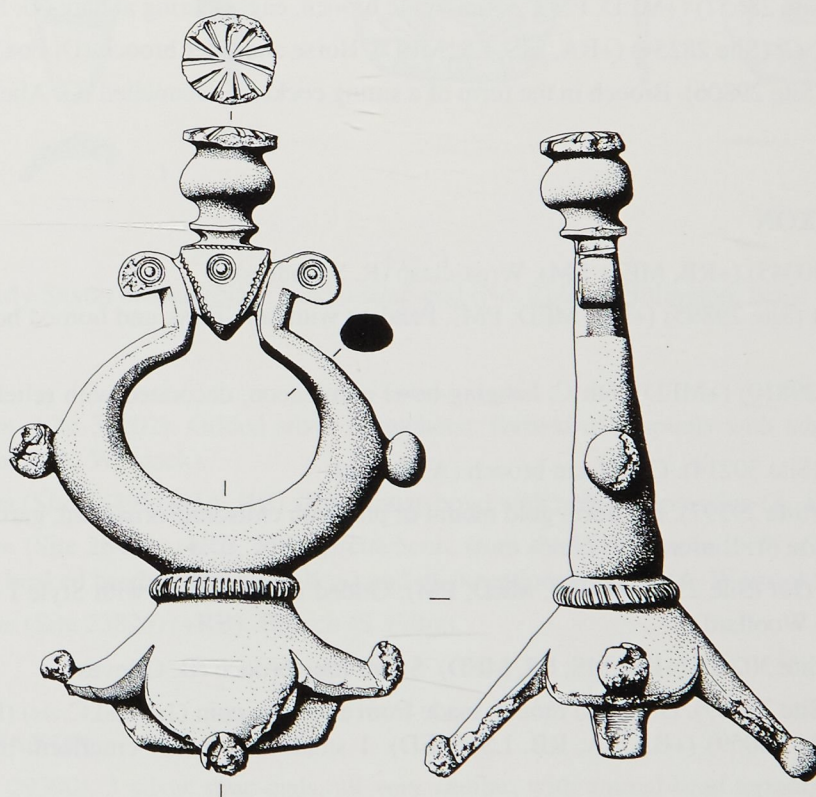


Fig. 2

Romano-British terret from King's Lynn. Scale 1:1.

Methwold (Site 22637). Two statuette heads, one Minerva, the other a youth (D. Langfield).

Needham (Site 29621) (+MED). Dispersed coin hoard of 8 silver *denarii* to Nero AD60/61 (D. Woollestone).

Lopham, S. (Site 29680). Mercury figurine (D. Lucken).

Narborough (Site 29851) (+NEO, MED, PM). Augustan leontomorphe brooch, 27BC-14AD (A. Oliver).

Narford (Site 29797). Buckle in form of animal head (P. Burke).

Quidenham (Site 29885) (+BA, ES, MS, MED, PM). Colchester-derivative brooch, AD 50-75, of a type found usually in the south-west (P. Woollard).

Ringstead (Site 30133) (+BA, ES, PM). Miniature foot from ?model stand (M. Bone).

Saxlingham Nethergate (Site 29682). Centre-looped cosmetic pestle, and mortar terminal in form of ox-head (B. Davison).

Snettisham (Site 29658). Bronze vessel (J. Burke).

Sporle with Palgrave (Site 29403) (+IA, ES, MED, PM). Seal-box lid, petal-shaped, enamelled (R. Ludford).

Tuttington (Site 28657) (+MED, PM). Zoomorphic brooch, eagle tearing at hare (G. Shepperd).

Walsingham, Gt (Site 28254) (+BA, MS, LS, MED), Horse and rider brooch (D. Fox).

Weybourne (Site 29806). Brooch in the form of a sitting cockerel, enamelled (G. Abel).

EARLY SAXON

Ashill (Site 30045) (+RB, MED, PM). Wrist-clasp (R. Saunders).

Attleborough (Site 29895) (+RB, MED, PM). Pendant with face-mask and horned headdress (C. Boyer).

Bixley (Site 29810) (+MED). 6th C. hanging-bowl escutcheon, decorated with relief spirals (G. Linton).

Bracon Ash (Site 30214). Cruciform brooch (A. Kedge).

Briningham (Site 29397). Peltiform gold mount or pin, with cloisonné ornament, garnets and filigree decoration (T. Linford).

Buckenham, Old (Site 29897) (+RB, MED, PM). Gilded silver mount, with Style I chip-carved ornament (P. Woollard).

Creake, N. (Site 30240) (+RB, MS, LS, MED). Small-long brooch (B. Grieves).

Creake, N. (Site 29389). Discoidal mount, made from a Roman coin (1st/2nd C. *as*) (B. Grieves).

Fincham (Site 30059) (+BA, IA, RB, LS, MED). 1 small-long and 4 cruciform brooches (C. Sproule).

Gayton (Site 3592) (+RB, MED). ES or MS vessel footring (J. Wells).

Hillington (Site 29913) (+RB, MS, LS, MED, PM). Gilded bronze foot of Lombardic-type brooch (Fig. 3, No. 1). Strap-end with ring-and-dot and grotesque mask in ?Style I, but unparallelled (Fig. 3, No. 2) (I. and K. Mickleburgh).

Ringstead (Site 30133) (+BA, RB, PM). Small-long brooch (M. Bone).

Quidenham (Site 30092) (+MED). Small-long brooch (E. Crick).

Quidenham (Site 30093). Equal-armed brooch (D. Bailey).

Saxlingham Nethergate (Site 30110). Cruciform brooch (B. Davison).

Sporle with Palgrave (Site 29380). ES or MS gilded bronze roundel, probably a hanging bowl mount (M. Slaven).

Winch, W. (Site 28120) (+BA, RB, MED, PM). Sword guard, lentoid, with chevron-stamped decoration (E. Smedhurst).



Fig. 3

Early Saxon brooch (No. 1) and a strap-end (No. 2) from Hillington. Scale 1:1.

Wreningham (Site 30202). Gilded silver escutcheon, formed of 2 spirals with addorsed birds' heads in centre (A. Womack).

Wreningham (Site 28495) (+IA, RB). ?ES bronze bowl with textile impression (A. Womack).

Wreningham (Site 28494) (+RB, MS). Escutcheon, from shield or box, in form of 2 spirals terminating in beaked heads. Chip-carved/cast and of exceptional quality (A. Womack).

Wymondham (Site 23825) (+RB). Brooch (S. Filby).

MIDDLE SAXON

Ashill (Site 29390). 3 silver strap-ends, all very similar, with animal-head terminals and niello inlay (R. Saunders).

Ashwellthorpe (Site 30205) (+BA, RB, ES, MED, PM). Strap-end (A. Womack).

Attleborough (Site 29896) (+RB, MED, PM). 9th C. disc brooch with backward-turning animal (C. Atkinson).

Bracon Ash (Site 30213) (+MED, PM). Pin with sub-conical head and collar (A. Kedge).

Bracon Ash (Site 29900) (+RB, ES, LS, MED, PM). Sceat, Bird type, AD 700-730 (J. Kedge).

Creake, N. (Site 30240) (+RB, ES, LS, MED) Strap-end with Trewhiddle-style animal and niello inlay (B. Grieves).

Lopham, N. (Site 29894). Frankish sceat, Series F, Cross on Steps type (B. Love).

Narford (Site 29798). Frisian sceat AD 710-715 (P. Burke).

Quidenham (Site 29883). Sceat of Beonna c. AD 758 (E. Crick).

Quidenham (Site 29674). Faceted-headed pin (P. Woollard).

Wreningham (Site 30201) (+ES, LS, MED, PM). Strap-end with animal-head terminal and ?enamel and silver wire inlay (A. Womack).

LATE SAXON

Barnham Broom (Site 29840). Bridle cheekpiece terminal (R. Reynolds).

Beachamwell (Site 2635) (+IA, RB, MS, MED, PM). 2 bells, faceted with projecting lobes at corners (S. Brown).

Besthorpe (Site 29690) (+IA, RB, MED, PM). Circular glass bead, dark blue with inlaid blobs of white, green and yellow glass (Black Carr Research Group).

Bracon Ash (Site 29288) (+RB, MED). Viking 'imported' brooch, convex disc with 3 Borre-style cat-like heads (J. Kedge, A. Kedge).

Burlingham (Site 30080) (+RB). Box-mount (R. Andrews).

Catton (Site 29738). Lead half-round cast object, perhaps model for box-mount (Fig. 4) (R. Chamberlin).

Cawston (Site 29813) (+MED). Box-mount with Ringerike-style addorsed animal heads (D. Coleman).

Creake, N. (Site 29428) (+BA, MS, MED, PM). Animal-head terminal from strap-union, with Borre-style interlace (G. Parsons).

Creake, N. (Site 28242) (+MED, PM). Bridle cheekpiece (G. Parsons).

Deopham (Site 30064) (+MED). Box-mount (A. Kedge).

Deopham (Site 30065). 10th C. Borre-style disc brooch (A. Kedge).

Dersingham (Site 29986). Openwork box-mount, with mixed Borre-and Ringerike-style decoration; a newly-noted local type (S. Farrow).

Downham Market (Site 29716). Borre-style disc brooch (D. Howlett).

Edgefield (Site 30231) (+MED). Ringerike-style hooked socketed fitting (J. Welch).

Foulden (Site 29881). Silver penny of Aethelweard c. AD 850-55 (D Storey).

Gayton (Site 30037). Silver penny of Eadgar (AD 959-973), moneyer Colenard (M. Carlile).

Gayton (Site 29715). Box-mount with backward-looking leonine quadruped (J. Wells).

Hindringham (Site 29739). 10th C. Borre-style disc brooch (C. Hudson).

Hindringham (Site 25071) (+MESO, RB, MS, MED, PM). Viking silver ingot, only the third example to be found (for the first Norfolk example see *Norfolk Archaeol.* XLI pt III (1992), p. 369 (Ditchingham 11674) (P. West).

Kenninghall (Site 29890) (+RB, MED, PM). Short cross penny of Cnut, Stamford mint, AD 1030-6 (R. Stacey).

Letheringsett with Glandford (Site 30017) (+MED, PM). Openwork strap-end with ring-and-dot, central mask flanked by tendril spirals (D. Coleman).

Marlingford (Site 29418) (+RB, MED). Trefoil brooch; closer than usual in style to Carolingian mounts with foliage decoration, and exceptionally large (A. Lupton).

Mulbarton (Site 29342) (+RB, MED). 5-lobed Viking sword-pommel, decorated with animal interlace (J. Bratton).

Snettisham (Site 29871) (+MED). Ringerike-style buckle (N. Mathews).



Fig. 4

Late Saxon lead ? model for box-mounts from Catton. Scale 1:1.

Snoring, Lt (Site 17589) (+ES, MED, PM). Gilded bronze 10th C. disc brooch (B. Grieves).

Thetford (Site 29443). 10th C. gilded bronze disc, enamelled. Probably a brooch, re-used as casket mount (M. Andrews).

Walpole St Peter (Site 20274) (+MED, PM). 10th C. lead disc brooch, with low relief decoration of almost pseudo-runic chevrons, and equal-armed cross with central boss (M. Crowson).

Weybourne (Site 29423) (+MS). Silver penny of Aethelred II, London mint, AD 985-991 (D. Coleman).

Winch, E (Site 30030) (+RB). Box-mount (J. Wells).

Wreningham (Site 28622) (+RB, ES, MED, PM). Silver penny of Edward the Confessor, AD 1048-50 (J. Kedge).

MEDIEVAL

Banham (Site 29475). Cropmark of ?moat (D. A. Edwards).

Belton (Site 28449). Gilded bronze figure (? of St John the Evangelist or the Virgin and Child), cast in the round, ?from a casket or shrine. Also trebuchet or tumbrel balance for coins (R. Rilings).

Brinton (Site 29585) (+IA, PM). Earthwork of moat and enclosures (B. Cushion).

Congham (Site 29742). Lead weight, ?weaving shuttle. Scatter of Grimston-Thetford Ware, perhaps kiln waste (J. Wells).

Edgefield (Site 29583). Earthworks of hollow way, enclosures, ?platforms, 2-3 tofts and pottery (B. Cushion).

Edgefield (Site 29584). Earthworks of enclosures and ?platforms, masonry and bricks, pottery (B. Cushion).

Garboldisham (Site 29762). Cropmark of ?moat (D. A. Edwards).

Gayton (Site 30034) (+RB). 14th/15th C. quatrefoil harness pendant, enamelled and gilded (J. Scott).

Gayton (Site 29713) (+IA, RB, ES, LS, PM). Stamp for ?leatherworking (S. Brown).

Gresham (Site 29814) (+RB, PM). 12th/13th C. dog leash swivel with animal-head decoration (D. Coleman).

Hickling (Site 8384). Cropmarks of priory; precinct boundary, buildings and enclosures (D. A. Edwards).

Kimberley (Site 29608). Village earthworks; ditched enclosures, boundary, house platforms, watercourse, ponds, tofts and pottery (B. Cushion).

Letheringsett with Glandford (Site 29421). 3-armed lamp suspension fitting with animal-head terminals (D. Coleman).

Lopham, S. (Site 29679) (+LBA, RB). Shield-shaped harness stud, enamelled (D. Lucken).

Marham (Site 4483). Cropmark of abbey; double-ditched precinct boundary (D. A. Edwards).

Stiffkey (Site 29592). Late MED brick footings exposed by the sea (Jarvis, E. Rose).

Tibenham (Site 29577). Earthwork complex of enclosures, platform, pond and pottery. Probable manor house or substantial farmhouse (B. Cushion).

Tuddenham, E. (Site 29435) (+RB, LS, PM). Lead bird-feeder (A. Lupton).

Tuttington (Site 29497). Earthworks of enclosures and ?house platforms, pottery; ?shrunk village of Burgh-next-Aylsham (B. Cushion).

Weeting with Broomhill (Site 29701). Cropmarks of moat (D. A. Edwards).

Woodbastwick (Site 29467). Cropmark of moat, possibly Cuttenham Hall (D. A. Edwards).

Woodton (Site 29782). Cropmark of ?moat (D. A. Edwards).

POST-MEDIEVAL

Brinton (Site 29585) (+IA, MED). Cylindrical lead stamp, with B on one end and a cross on the other. Perhaps a potter's stamp (T. Linford).

Gayton (Site 29713) (+IA, RB, ES, MED). Highly elaborate openwork sword buckle (S. Brown).

Correction to 1992 list

The post-medieval silver hawk ring from *Ashill* has been relocated to Site 30260 (where a second similar and ?related ring has been discovered). A separate note on both rings can be found elsewhere in this volume.

EXCAVATIONS AND SURVEYS IN NORFOLK 1993

Edited by David Gurney

This annual report comprises summaries of archaeological excavations, fieldwork and surveys carried out during the year. As it is often several years before post-excavation work is completed and a full report is published, these summaries provide a useful guide to current archaeological research in the County. The help of Heather Wallis of the NAU in the compilation of this report is gratefully acknowledged.

Sites are listed alphabetically by parish, and their locations are shown on Fig. 1. The following abbreviations are used:- NAU - Norfolk Archaeological Unit; NLA - Norfolk Landscape Archaeology; Site - Norfolk Sites and Monuments Record Site Number.

1. *Banham*, Gaymers Close (Site 24627; TM 0671 8838)
by Sarah Percival, NAU.
Evaluation trenching for Breckland District Council, close to the site of a probable Roman villa, revealed a number of Romano-British pits (possibly industrial) and ditches.
2. *Bawsey*, Mintlyn Farm (Sites 28921-4, 30292-7; TF 650 190)
by Kenneth Penn, NAU.
A fieldwalking and metal-detector survey for Mr Gray located two scatters of medieval pottery. That next to Mintlyn church has iron slag associated, and may represent the location of the deserted medieval village of Mintlyn.