

## ARCHAEOLOGICAL FINDS IN NORFOLK 1994

*Edited by David Gurney*

This is a selection of important finds (from an estimated total of more than 20,000 object identifications), details of which have been entered during 1994 onto the Norfolk Sites and Monuments Record. This is maintained at the Norfolk Museums Service Landscape Archaeology Section at Gressenhall and at the Castle Museum, Norwich, and may be consulted by appointment.

The entries are arranged by period and, within each period, by parish alphabetically. Grid references have been omitted at the request of finders. Where material of other periods is recorded but not described, this is shown by, for example, (+PAL, RB).

Period abbreviations are as follows (with approximate calendar dates in brackets): PREHIS prehistoric; PAL (UPAL/LPAL) Palaeolithic (Upper/Lower)(pre-10,000BC); MESO Mesolithic (10,000-4000BC); NEO Neolithic (4000-2000BC); BKR Beaker (2300-1700BC); BA (EBA/MBA/LBA) Bronze Age (Early/Middle/Late) (2000-650BC); IA Iron Age (650BC-AD43); RB Romano-British (AD43-410); ES Early Saxon (AD 410-650); MS Middle Saxon (AD650-850); LS Late Saxon (AD 850-1066); MED medieval (AD1066-1500); PM post-medieval (AD1500-1950); U undated. Metal artefacts are of copper alloy (bronze) and Iron Age, Saxon and medieval coins are of silver unless otherwise stated.

Norfolk Landscape Archaeology and the Castle Museum are most grateful to all those who bring in finds for identification, thereby contributing to the Sites and Monuments Record and this annual list. The assistance of Peter Robins (flint identifications) and colleagues in other institutions, especially the British Museum and the Fitzwilliam Museum, Cambridge, in the identification of finds is gratefully acknowledged. The majority of the finds listed have been found in the course of metal-detector survey, but the list also includes fieldwalking finds and new discoveries of sites either by field observation or by aerial photographic survey.

All of the illustrations have been drawn by Sue White.

### PALAEOLITHIC

*Beetley* (Site 30600)(+NEO, IA, RB, LS, MED, PM). ?PAL bifacially-worked crescentic piece (T. Gascoigne).

*Hedenham* (Site 30944)(+MESO, LS). UPAL large blade-like flake (S. Dunthorne).

*Merton* (Site 30926). PAL bifacial ovate flint hand-axe, from the Mousterian or Acheulian tradition (Lord Walsingham).

*Scole* (Site 24814). Large UPAL flint blade (E. Simms).

*Wymondham* (Site 30968). Tip of cordate handaxe (M. Bone).

### MESOLITHIC

*Costessey* (Site 30572)(+NEO, BA). Two flint blade cores, blades and core tablet (P. Alden).

*Hedenham* (Site 30944)(+PAL, LS). MESO or early NEO blade (S. Dunthorne).

*Hindringham* (Site 28844). Quartzite macehead (T. Mitchell).

*Ingoldisthorpe* (Site 30418)(+NEO). Flint scatters, including microliths (J. Smallwood).

### NEOLITHIC

*Beetley* (Site 30600)(+PAL, IA, RB, LS, MED, PM). ?Tip of small flaked axe (T. Gascoigne).

*Buxton with Lammas* (Site 7690). Cropmark of causewayed enclosure (D.A. Edwards).



*Costessey* (Site 30572)(+MESO, BA). ?Early NEO laurel-leaf, flakes, steep end-scrapers, trimming flakes. Late NEO or BA plano-convex knife, small scrapers, ?piercer (P. Alden).

*Cranwich* (Site 30751). Late NEO or EBA working floor, undisturbed, with cores, end-scrapers and oblique arrowhead (D. Woollestone).

*Crostwick* (Site 20477). Cropmark of long barrow (D.A. Edwards).

*Hanworth* (Site 18190). Cropmark of south-west end of cursus, a wedge-shape with an entrance, adjacent to two circular enclosures (D.A. Edwards).

*Ingoldisthorpe* (Site 30418)(+MESO). Extensive flint scatter, including polished axe fragment, leaf points and scrapers (J. Smallwood).

*Sall* (Site 30429)(+IA, RB, MS, LS, MED, PM). Two flint axes, one NEO, the other NEO or EBA (R. Saunders).

*Wiveton* (Site 30725). Late NEO or EBA axe, adze or unfinished dagger (S. Woodhouse).

### BRONZE AGE

*Attleborough* (Site 29895)(+MED, PM). MBA palstave butt (C. Atkinson).

*Attleborough* (Sites 30387, 30938)(+MED, PM). Two LBA socketed axe fragments (C. Atkinson).

*Brampton* (Site 1124)(+IA, RB, MED). MBA palstave (M. Bone).

*Brisley* (Site 30291). MBA dirk (Missen).

*Burnham Market* (Site 30845). MBA unlooped palstave (R. Larkinson).

*Carleton Rode* (Site 30939). MBA side-looped socketed spear (D. Harty).

*Carleton Rode* (Site 30940). Tip of MBA or LBA socketed spear (D. Harty).

*Cranwich* (Site 13696)(+RB). LBA awl (D. Woollestone).

*Fincham* (Site 30333)(+RB, MED, PM). LBA socketed axe fragment (C. and S. Sproule).

*Hillington* (Site 30772). Unlooped MBA palstave (Fig. 1)(D. Bird).

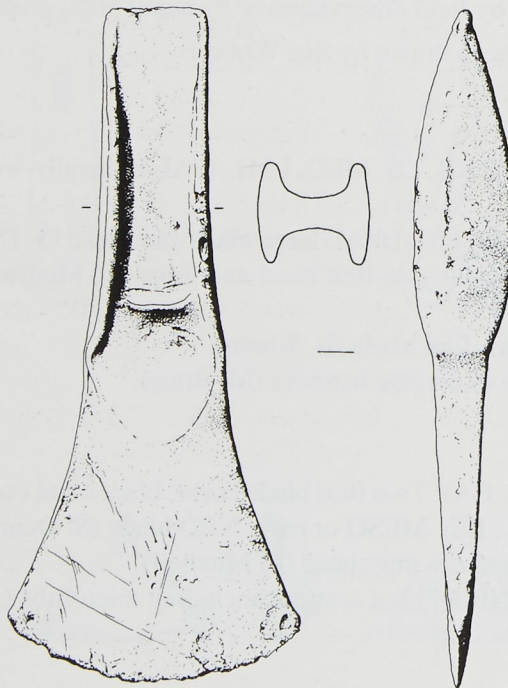


Fig. 1 Middle Bronze Age  
Palstave from Hillington. Scale 1:2



- Lopham, N.* (Site 30454)(+RB, ES, MED, PM). LBA socketed axe fragment (P. Leeder).  
*Lopham, N.* (Site 30953). EBA flat axe (P. Leeder).  
*Massingham, Gt* (Site 30802). Beaker sherd (G. Burrows).  
*Ringstead* (Site 29401)(+RB, MED, PM). LBA pin, grooved shank (M. Gibbons).  
*Sheringham, U.* (Site 30018)(+IA, RB, MS, LS, MED). Dagger or spearhead fragment (D. Coleman).  
*Shipdham* (Site 30580)(+MED). Awl (D. Sheldrake).  
*Sporle with Palgrave* (Site 28809)(+MED, PM). LBA socketed axe handle (M. Slaven).  
*Swannington* (Site 7455)(+RB, MED). LBA sickle or knife blade (T. Hudson).  
*Tharston* (Site 30395)(+MED, PM). MBA palstave butt (P. Thrower).  
*Westacre* (Site 21302)(+RB, ES, MED, PM). LBA awl (J. Wells).  
*Weybourne* (Site 29168). LBA awl (G. Abel).  
*Ring-ditches:* newly-recorded cropmarks include Bodham 30316 (double concentric), Coltishall 30290, Dunton 30859, Eaton 30557, Feltwell 21140, 30854 (2), Hanworth 30853, Hockwold cum Wilton 30284 (6), 30855 (2), Marham 30849, Melton, Gt 16258 (and square enclosure), Morton-on-the-Hill 30313, Necton 30321 (2 and enclosures), Pudding Norton 30860, Tattersett 30286 (2 incl. double concentric and enclosure), Tittleshall 17065 (all D.A. Edwards).

## IRON AGE

- Attleborough* (Site 29302). Linch pin fragment (C. Atkinson).  
*Banham* (Site 30933). C1 AD ?scabbard strap-end (B. Love).  
*Bramerton* (Site 30689)(+RB, MED). Terret fragment (M. Miller).  
*Colkirk* (Site 30867)(+RB, ES, MS, LS, MED, PM). Icenian gold stater, 'Norfolk wolf' type (P. McAllister).  
*Feltwell* (Site 5205). IA or RB ring-headed pin (A. Bidwell).  
*Fincham* (Site 30049)(+RB, ES, MED). Bracelet, decorated with half-round knobs. Icenian silver coin hoard, 44 coins of various types to c. AD 60 including SVBRIIPRATSO ESICO FECIT (Prasutagus) and a small lump of silver (C. Sproule).  
*Heacham* (Site 13032). Cropmarks of ?IA or ?RB enclosures, round houses, droves and field systems (D.A. Edwards).  
*Holme Hale* (Site 16285)(+RB). Fragment of ?S-shaped horse-trapping (M. Howard).  
*Holme Hale* (Site 30259). Gold stater, Gallo-Belgic E, 65-55BC, exergue missing (M. Howard).  
*Merton* (Site 5061)(+RB, ES, LS, MED). Silver coin, Boar-Horse E inscribed ALE SCA. Terret fragment C1 (D. Bird, B. Grieves).  
*Quidenham* (Site 30383). Tiny terret (E. Crick).  
*Rudham, W.* (Site 30883)(+RB, ES, PM). Gold quarter stater, Irstead type, 45-40BC (B. Mears).

## ROMANO-BRITISH

- Ashill* (Site 30947). Toilet/surgical instrument handle, probe from spoon-probe. End-looped cosmetic mortar (E. Sheldrake).  
*Bawsey* (Site 25962)(+IA, ES, MS, LS, MED, PM). Miniature ?votive lead claw hammer (cf Upwell 29193) (M. Carlile).  
*Beetley* (Site 30600)(+PAL, NEO, IA, ?LS, MED, PM). Cast duck figurine (T. Gascoigne).  
*Bracon Ash* (Site 29900)(+MS, LS). ?RB tweezers, decorated with ring-and-dot (A. Kedge).



*Bramerton* (Site 30689)(+IA, MED). Lead mount or setting with female Republican head, probably cast from a coin (M. Miller).

*Caistor St. Edmund* (Site 30288). Cropmark of road approaching *Venta Icenorum* from the south-east (D.A. Edwards).

*Colkirk* (Site 30867)(+IA, ES, MS, LS, MED, PM). Figurine of ?Hercules. Socketed bull's head (P. McAllister).

*Dunham, L.* (Site 30277)(+ES, LS, MED, PM). Oval military pendant. Mandolin-shaped spoon-bowl. Gold finger-ring with flat-topped colourless glass within raised box-setting surrounded by 'roped' flange. Finger-ring with bezel inscribed 'AVE' (Fig. 2A)(R. Ludford).

*Elsing* (Site 30334). Box mount in form of a head of Pan (T. Hanratty).

*Field Dalling* (Site 25251)(+LS, MED). Fused cluster of ten coins, AD 270-284 (S. Kemp).

*Grimston* (Site 3586). Lozenge-shaped brooch with millefiori enamel (Fig. 2B)(D. Bird).

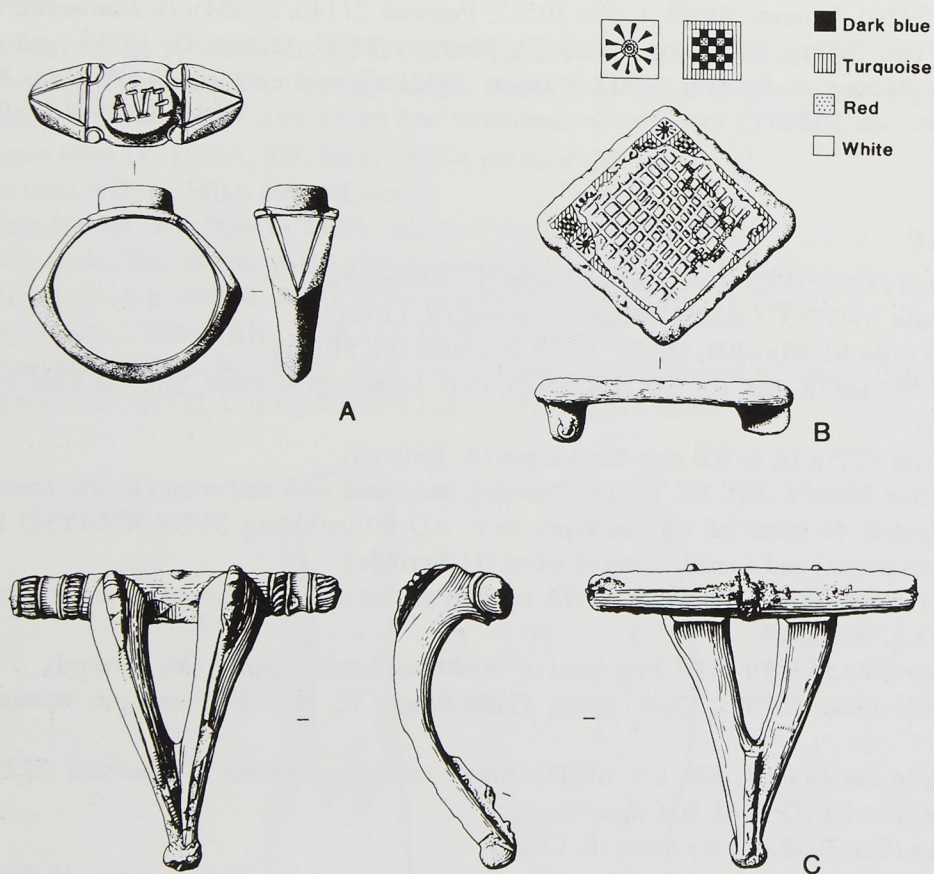


Fig. 2 Romano-British  
A. Finger-ring from Dunham. B. Brooch from Grimston.  
C. Brooch from Holme Hale. Scale 1:1

*Holme Hale* (Site 16285)(+IA). Fragment of iron chain-mail (M. Howard).

*Holme Hale* (Site 25783)(+IA, MED). 'Double Dolphin' brooch, two bows conjoined at the foot with a single catchplate, hinged pin (Fig. 2C). Centre-looped cosmetic palette (M. Howard).



- Merton* (Site 5061)(+IA, ES, LS, MED). Lion-mask stud. Stylus (P. McAllister).  
*Morley* (Site 25460)(+IA, MS, LS, MED). Coin hoard, 77 bronze coins to AD328 (M. Bone, J. Ogden).  
*Northwold* (Site 22911). Cropmarks of ?RB rectangular enclosures (D.A. Edwards).  
*Postwick* (Site 30475)(+MED, PM). Reversed fantail brooch and Dolphin brooch (K. Canham).  
*Quidenham* (Site 10792)(+MED, PM). ?RB cockerel figurine (E. Crick).  
*Quidenham* (Site 30382). Handle escutcheon; two leaf-shaped panels with transverse mouldings and moulded loop, and circular attachment plate (E. Crick).  
*Snoring, L.* (Site 2157)(+ES, MS, MED). Openwork handle (B. Grieves).  
*Tuttington* (Site 30474). Mercury figurine (Thorpe).  
*Upwell* (Site 29193)(+ES, MED, PM). Miniature ?votive lead claw hammer (cf Bawsey 25962) (M. Carlile).  
*Walton, E.* (Site 30884). Zoomorphic enamelled brooch, probably hare type (J. Wells).  
*Westacre* (Site 30821)(+LS, MED, PM, U). Patera handle, blue enamel ground, ?hare with partly-red enamel body (S. Brown).  
*Weybourne* (Site 29097)(+MED, PM). Zoomorphic brooch, fish type, with blue enamel, C2. Votive peacock figurine (G. Abel).  
*Wreningham* (Site 30394). Rectangular harness slide (J. Kedge).

### EARLY SAXON

- Aylsham* (Site 12977)(+MED). Cruciform brooch (J. Purdy).  
*Congham* (Site 30690)(RB, MED, PM). ?ES ?mount or belt-fitting, made from a cut-down brooch. Part molten silver fragment with Style 1 decoration (J. Wells).  
*Crimplesham* (Site 15539)(+MS, LS, MED, PM). Headplate fragment of gilded great square-headed brooch (S. Brown).  
*Fulmodeston* (Site 17342)(+RB, LS, MED, PM). Gilded pendant with Style 1 animal decoration (Fig. 3A)(P. McAllister).

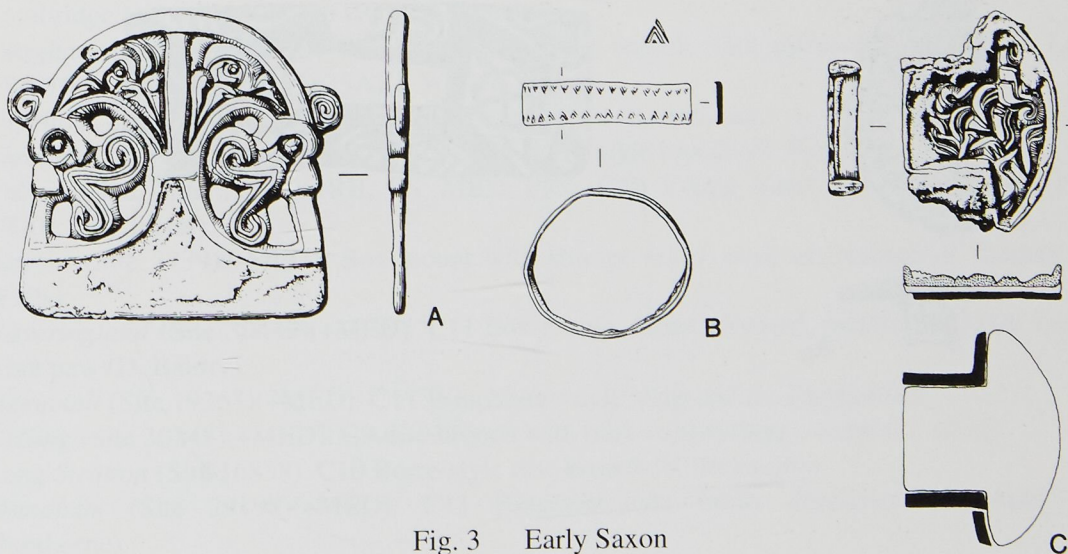


Fig. 3 Early Saxon  
 A. Pendant from Fulmodeston. B. Finger-ring from Rudham.  
 C. Buckle from Rudham. Scale 1:1 (stamp 2:1)



*Gayton* (Site 16121)(+MED, PM). Disc or plate brooch with border of crescentic stamps (J. Wells).

*Kelling* (Site 30249)(+MS, LS, MED, PM). Early (C5) narrow animal-head foot from cruciform brooch (G. Abel).

*Marham* (Site 29903)(+MED, PM). Cruciform brooch, ?Group IV (C. Seaman).

*Quidenham* (Site 30365)(+MED). Unusual wrist-clasp and fish-shaped mount from hanging-bowl, originally enamelled (E. Crick).

*Rudham, W.* (Site 30883). Gold finger-ring, decorated with triangular stamps along each edge (Fig. 3B). 'Shield-on-tongue'-type buckle, mushroom-shaped with Style 1 decoration (Fig. 3C, with outline from x-ray and iron shown solid black) (B. Mears).

*Snoring, L.* (Site 2157)(+RB, MS, MED). Brooch or toilet implement (B. Grieves).

*Sporle with Palgrave* (Site 4598). Cropmark of large mound where inhumations were excavated c. 1820 (D.A. Edwards).

*Walton, E.* (Site 12366)(+RB). Buckle, tiny ovoid frame (S. Brown).

### MIDDLE SAXON

*Bracon Ash* (Site 29900)(+RB, LS). Runic type sceat, Series C, c. AD 700-710 (A. Kedge).

*Creake, N.* (Site 11707)(+IA, RB, MED, PM). Sceat, Series Q, c. AD 720-740 (G. Parsons).

*Creake, N.* (Site 28242)(+PM). Nummular brooch, scalloped edge, pelleted border, ?imitation inscription, central profile bust (Fig. 4A)(P. McAllister).

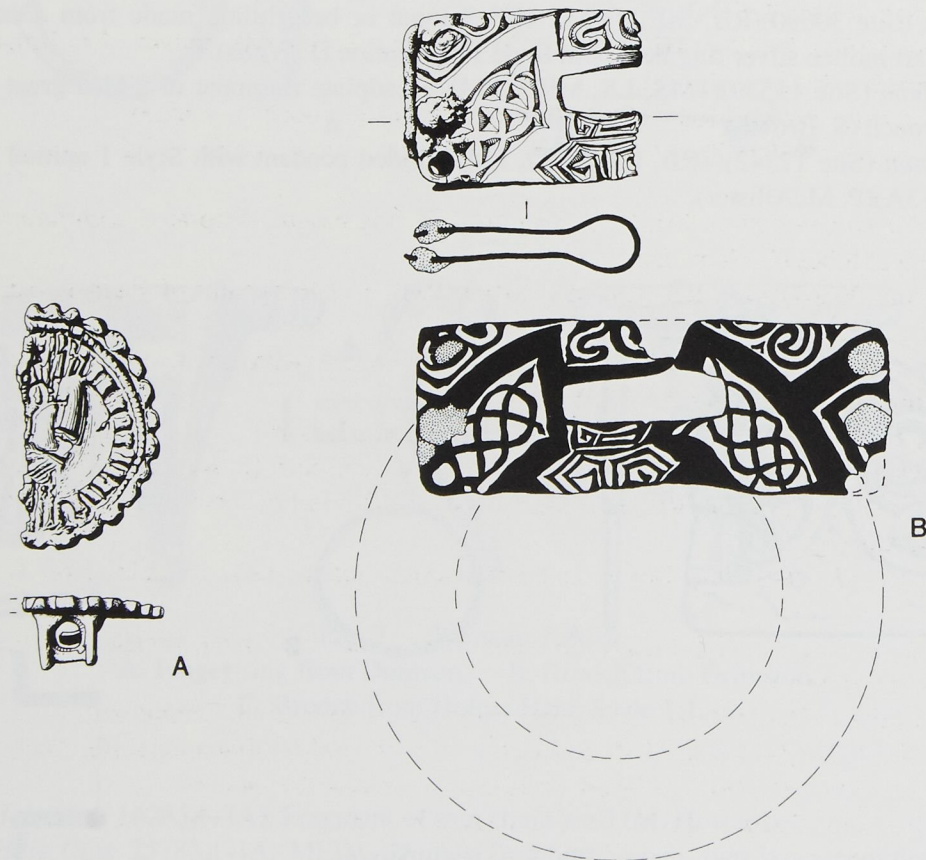


Fig. 4 Middle Saxon  
A. Nummular brooch from Creake. B. Buckle-plate from Gayton. Scale 1:1



- Dunham, L.* (Site 30272) (+IA, RB, LS, MED, PM). Ipswich Ware sherd with stamped decoration (S. Pascoe).
- Gayton* (Site 30881) (+MED, PM). Buckle plate made from part of unusually-large gilt C8 interlace-decorated mount, folded over and joined with rivets at the open end, so decorated on both sides (Fig. 4B) (A. Olma).
- Gressenhall* (Site 30563) (+RB, MED, PM). Ipswich Ware sherd, the first from the parish (M. Disney).
- Hockering* (Site 30679) (+IA, RB, MED, PM). Foot of silver square-headed brooch, with cast animal, cable, spiral ornament and inlaid niello (R. Reynolds).
- Lopham, N.* (Site 30359) (+MED, PM). Strap-end with engraved decoration. Animal-head terminal, central panel divided into two by a vertical line with a tiny Trewiddle-style animal on each side (E. Crick).
- Ovington* (Site 30610). Ipswich Ware sherd, the first from the parish (A. Sheldrake).
- Quidenham* (Site 24051). Pin with sub-biconical head (E. Crick).
- Snoring, L.* (Site 2157) (+RB, ES, MED). Two pins (B. Grieves).
- Walsoken* (Site 19047). Sceat, Series X, 'Woden/monster' type, c. AD 715-735 (M. Carlile).

### LATE SAXON

- Ashwellthorpe* (Site 30275) (+RB, MED, PM). Penny, helmet type, of Edward the Confessor, AD1053-6. Bridle cheekpiece (M. Bone).
- Ashwellthorpe* (Site 30585). Once-enamelled disc brooch of continental type, half-length figure of saint and halo (M. Bone).
- Attleborough* (Site 29896) (+MED, PM). C9 imported Borre-style convex disc brooch with three animal-heads (C. Atkinson).
- Bracon Ash* (Site 29900) (+RB, MS). C10 Borre-style disc brooch (J. Kedge).
- Bracon Ash* (Site 30392). Two lobes from 3- or 5-lobed sword pommel. ?LS trefoil decorative boss (A. Kedge).
- Buxton with Lammas* (Site 30336). Ringerike-style box-mount, decorated with animal heads and spiral leaf lobes (C. Snowden).
- Colkirk* (Site 30867) (+IA, RB, ES, MS, MED, PM). Cut halfpenny of Eadgar, Norwich or Cambridge mint, AD 973-975 (P. McAllister).
- Congham* (Site 3565) (+RB, ES, MS, PM). ?Disc brooch with openwork decoration. Late C9/C10 ring-headed pin (Fig. 5A) (J. Wells).
- Dereham, E.* (Site 30949). Winchester-type strap-end (R. Jenkins).
- Field Dalling* (Site 25251) (+RB, MED). C10 Borre-style brooch (S. Kemp).
- Fulmodeston* (Site 17342) (+RB, ES, MED, PM). C10 Viking horse and rider brooch (Fig. 5B) (P. McAllister).
- Gayton* (Site 3739) (+MED). Box-mount with strange relief mask of ?animal or ?human (J. Wells).
- Haveringland* (Site 30449) (+MED). C11 box-mount, lobed terminal, profile lion with raised front paw (D. Baldry).
- Hempnall* (Site 19363) (+MED). C11 Winchester-style strap-end (S. Dunthorne).
- Kelling* (Site 30248) (+MED). C9 disc brooch with backward-turning animal (G. Abel).
- Long Stratton* (Site 16838). C10 Borre-style disc brooch (K. Reynolds).
- Mundham* (Site 29198) (+MED). C11 Ringerike-style bridle cheekpiece fragment (S. Dunthorne).
- Riddlesworth* (Site 30925) (+RB, ES, MED). Short cross penny of Cnut, Thetford mint, AD 1030-36 (D. Storey).



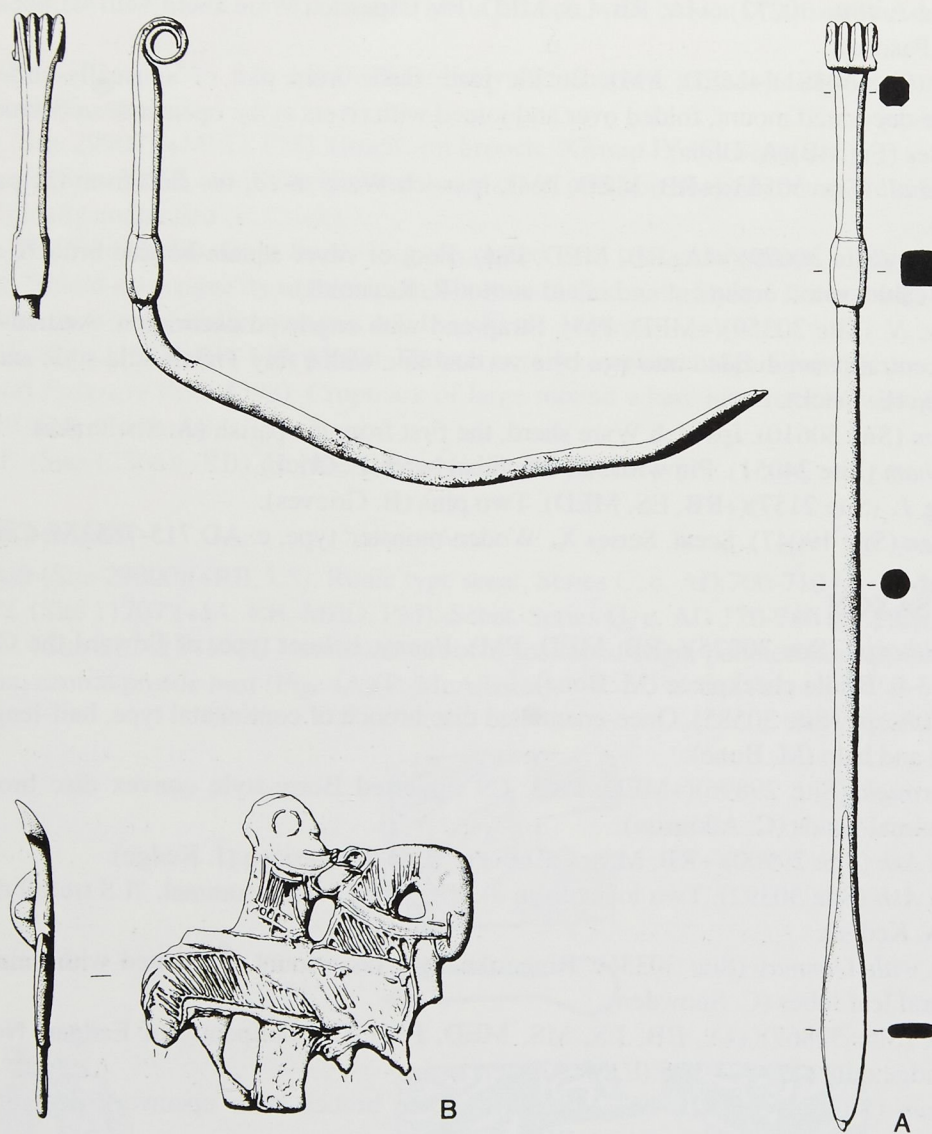


Fig. 5 Late Saxon

A. Ring-headed pin from Congham.

B. Viking horse and rider brooch from Fulmodeston.

Scale 1:1

*Rudham, W.* (Site 30441) (+RB, MED, PM). Two bridle cheekpieces. Box-mount decorated with interlace and two profile animal-heads (B. Mears).

*Sall* (Site 30974)(+MED, PM). C11 box-mount with Ringerike-style animal-head terminals (R. Saunders).

*Tasburgh* (Site 20928). Unusual openwork lozengiform imported brooch with animal head at each corner and rosette in centre (R. Reynolds).

*Walsham, S.* (Site 18330). C9 imported Borre-style convex disc brooch (M. Bone).

*Wreningham* (Site 28494)(+RB, ES, MED). ?LS finger ring (A. Womack).



**MEDIEVAL**

*Ashwellthorpe* (Site 30275)(+RB, LS, PM). Triangular balance pan, with corner-holes for suspension, a central lion mask and inscription ..]ANTOI[. (?Canterbury) (M. Bone).

*Aylsham* (Site 30459). C14 seal matrix. Falcon or hawk preying on duck, ALAS IE SV PRIS (alas I am taken) (J. Purdy).

*Brampton* (Site 1124)(+BA, IA, RB). Unusual ?MED glass bead, metal core with red and blue glass around with human figures. Crude lead model of finger-ring (M. Bone).

*Gayton* (Site 3739)(+LS). Dagger-chape with scalloped top edge and engraved and punched-dot decoration (J. Wells).

*Gressenhall* (Site 25435). Cropmarks of ?MED subcircular enclosure (D.A. Edwards).

*Grimston* (Site 3579)(+RB, ES, MS, MED). Circular seal matrix, C14, stag in centre, RIhC ON ELOD (J. Wells).

*Halvergate* (Site 30301). Cropmark of ?moat, linear features and tracks (D.A. Edwards).

*Harling* (Site 28355). Gilded pin or mount, pierced lobed terminal above elongated dragon-head with lentoid eyes and pointed ears (E. Crick).

*Haveringland* (Site 30852). Cropmarks of settlement/deserted medieval village (D.A. Edwards).

*Ingham* (Site 30900). C14/C15 French jetton, 'crown type', reused as dagger knife-guard (M. Cummings).

*Lopham, S.* (Site 30357). Lead rectangular pilgrim badge, St Peter and St Paul, Rome, probably inscribed SIGNVM PAVLI ET PETRI APOST VLORVM (E. Crick).

*Massingham, Gt* (Site 30806). ?MED skeletons found, possibly associated with the site of All Saints' church (E. Rose).

*Quidenham* (Site 30349). Papal bulla of Boniface VIII, 1294-1303 (D. Lucken).

*Quidenham* (Site 30377)(+ES). Barrel padlock, faceted 'barrel' with stamped decoration, works missing (E. Crick).

*Quidenham* (Site 30381). Gilded cast convex mount, with moulded 'eye-brow' decoration, almost a face-mask, two tiny quatrefoils in sunken fields, two lugs and reverse silvered (E. Crick).

*Ringstead* (Site 29401)(+BA, RB, PM). C15 animal-head ewer-spout (M. Gibbons).

*Wacton* (Site 30397)(+IA, RB, ES, MED, PM). Gold angel of Henry VII, AD 1485-1509 (P. Thrower).

**POST-MEDIEVAL**

*Ashill* (Site 21770)(+RB, MED). Silver toilet set, cylindrical hollow container with delicate ear-scoop and nail-cleaner (R. Saunders).

**UNDATED**

*Necton* (Site 30851). Cropmark of square enclosure, with possibly another adjoining (D.A. Edwards).

*Westacre* (Site 30821)(+RB, LS, MED, PM). Elongated rectangular silver ingot (S. Brown).