

## ARCHAEOLOGICAL FINDS IN NORFOLK 1995

*Edited by David Gurney*

This is a selection of important finds (from an estimated total of more than 20,000 object identifications), details of which have been entered during 1995 onto the Norfolk Sites and Monuments Record. This is maintained at the Norfolk Museums Service Landscape Archaeology Section at Gressenhall and at the Castle Museum, Norwich, and may be consulted by appointment.

The entries are arranged by period and, within each period, by parish alphabetically. Grid references have been omitted at the request of finders. Where material of other periods is recorded but not described, this is shown by, for example, (+PAL, RB).

Period abbreviations are as follows (with approximate calendar dates in brackets): PREHIS prehistoric; PAL (UPAL/LPAL) Palaeolithic (Upper/Lower)(pre-10,000BC); MESO Mesolithic (10,000-4000BC); NEO Neolithic (4000-2000BC); BKR Beaker (2300-1700BC); BA (EBA/MBA/LBA) Bronze Age (Early/Middle/Late) (2000-650BC); IA Iron Age (650BC-AD43); RB Romano-British (AD43-410); ES Early Saxon (AD410-650); MS Middle Saxon (AD650-850); LS Late Saxon (AD850-1066); MED medieval (AD1066-1500); PM post-medieval (AD1500-1950); U undated. Metal artefacts are of copper alloy (bronze) and Iron Age, Saxon and medieval coins are of silver unless otherwise stated.

Norfolk Landscape Archaeology and the Castle Museum are most grateful to all those who bring in finds for identification, thereby contributing to the Sites and Monuments Record and this annual list. The assistance of Peter Robins (flint identifications) and colleagues in other institutions, especially the British Museum and the Fitzwilliam Museum, Cambridge, in the identification of finds is gratefully acknowledged. The majority of the finds listed have been found in the course of metal-detector survey, but the list also includes fieldwalking finds and new discoveries of sites either by field observation or by aerial photographic survey. The illustrations are by Sue White.

### PALAEOLITHIC

*Happisburgh* (Site 31462). Cordate hand-axe with battered edges (M. Askew).

*Happisburgh* (Site 31657). Cordate to ovate handaxe (R. James).

*Hellesdon* (Site 31389). Hand-axe (K. Burke).

### MESOLITHIC

*Briningham* (Site 31484)(+NEO, BA, IA). Heavy trapezoidal flint pick (T. Linford).

*Burnham Market* (Site 18496)(+NEO, RB, ES, MS, MED, PM). MESO or NEO double-ended scraper (P. West).

### NEOLITHIC

*Besthorpe* (Site 31239)(+BA, IA, RB, MED, PM). Flints (E. Savery).

*Binham* (Site 31571)(+RB, MS, MED, PM). Flake knives, scrapers, piercers etc (P. West).

*Briningham* (Site 31484)(+MESO, BA, IA). Early NEO leaf arrowhead and laurel-leaf points, late NEO cores, late NEO/EBA plano-convex knife (T. Linford).

*Burnham Market* (Site 18496)(+MESO, RB, ES, MS, MED, PM). ?Axe roughout, flakes, scrapers, blades, core/hammerstone (P. West).



- Keswick* (Site 31555). Cropmarks of ?flint-mine shafts or ?ES ?sunken-featured buildings (D. A. Edwards).
- Methwold* (Site 29298). Fragment polished stone axe. Also U stone macehead, half perforated (D. Woollestone).
- Stody* (Site 29721)(+BA, RB, LS). Biface flint implement. Late NEO/EBA flint knife (T. Linford).
- Swainsthorpe* (Site 9724)(+RB, MS, LS, MED). Flint end scraper (G. Linton).
- Wymondham* (Site 31193)(+IA, BA). Late NEO/EBA flints (E. Savery).

### BRONZE AGE

- Attleborough* (Site 30938). Two LBA socketed axe fragments (C. Atkinson).
- Beetley* (Site 31437). Ring-ditch and small penannular ring-ditch within enclosures (probably recent fields)(D. A. Edwards).
- Beetley/Stanfield* (Site 30600)(+ RB, MED, PM). LBA spearhead (T. Gascoigne).
- Besthorpe* (Site 31239)(+NEO, IA, RB, MED, PM). Three Beaker sherds (E. Savery).
- Booton* (Site 31557). Cropmark of square enclosure and double concentric ring-ditch (D. A. Edwards).
- Bradenham* (Site 31495). MBA palstave (R. Chamberlin).
- Broome* (Site 31444). Ring-ditch and double rectangular enclosure (D. A. Edwards).
- Carleton St. Peter* (Site 17291). Cropmarks, now including large double concentric ring-ditch, almost hengiform (M. Page).
- Creake, N.* (Site 31114). MBA/LBA looped palstave (Fig. 1A).
- Ellingham, Gt* (Site 31588). LBA hoard of 6 socketed axes, 2 sword blade fragments, 1 sword hilt fragment, 1 casting jet (G. Allen).
- Elmham, N.* (Site 1100)(+PM). Battered ?awl (T. Harcourt).
- Gateley* (Site 31438). Segment of ring-ditch (D.A. Edwards).
- Gunthorpe* (Site 21925)(+RB, ES, MS, LS, MED, PM). LBA socketed axe (B. Francis).
- Hempton* (Site 31704). Palstave (M. Gray).
- Letheringsett with Glandford* (Site 31167)(+RB, LS). LBA socketed axe blade (G. Owen).
- Litcham* (Site 31522). Earthwork of round barrow (D. Voisey).
- Long Stratton* (Site 25916)(+ IA, RB, PM). MBA side-looped spearhead (P. Thrower).
- Lopham, N.* (Site 30953). Casting jets and waste (P. Leeder).
- Lopham, N.* (Site 31177)(+RB, MED). LBA projectile/spearhead point (P. Leeder).
- Methwold* (Site 17713)(+IA, RB). MBA halberd/dagger, dagger/rapier, side-looped spearhead, dagger hilt/blade (D. Woollestone).
- Methwold* (Site 31671). Side-looped spearhead (D. Woollestone).
- Methwold* (Site 21036). Palstave and jet (D. Woollestone).
- Narborough* (Site 3907)(+RB, MED, PM). Tip of spearhead (S. Brown).
- Narborough/Narford* (Site 28742)(+IA, RB, ES, MS, MED, PM). LBA socketed axe blade (A. Oliver).
- Newton Flotman* (Site 31048). Socketed axe blade fragment (S. Dunham).
- Postwick* (Site 9649)(+RB, MED, PM). Tip of LBA spearhead (R. Crawford).
- Rudham, E.* (Site 31070)(+MED). MBA spearhead blade fragment (A. Murrey).
- Saham Toney* (Site 31468)(+RB, MED). Sword blade fragment (R. Gapp).
- Sall* (Site 30974)(+MED, PM). ?LBA spearhead socket (R. Saunders).
- Sall* (Site 31346). LBA socketed axe edge (R. Taylor).
- Shipdham* (Site 31179)(+RB, LS, MED, PM). LBA socketed axe blade (D. Sheldrake).



*Shotesham* (Site 29777)(+ IA, RB). EBA flat axe butt-end, sawn from rest of axe (A. Scott).  
*Snettisham* (Site 1531)(+RB, MS). Sword blade fragment (S. Brown).  
*Stody* (Site 29721)(+NEO, RB, LS). Axe fragment (T. Linford).

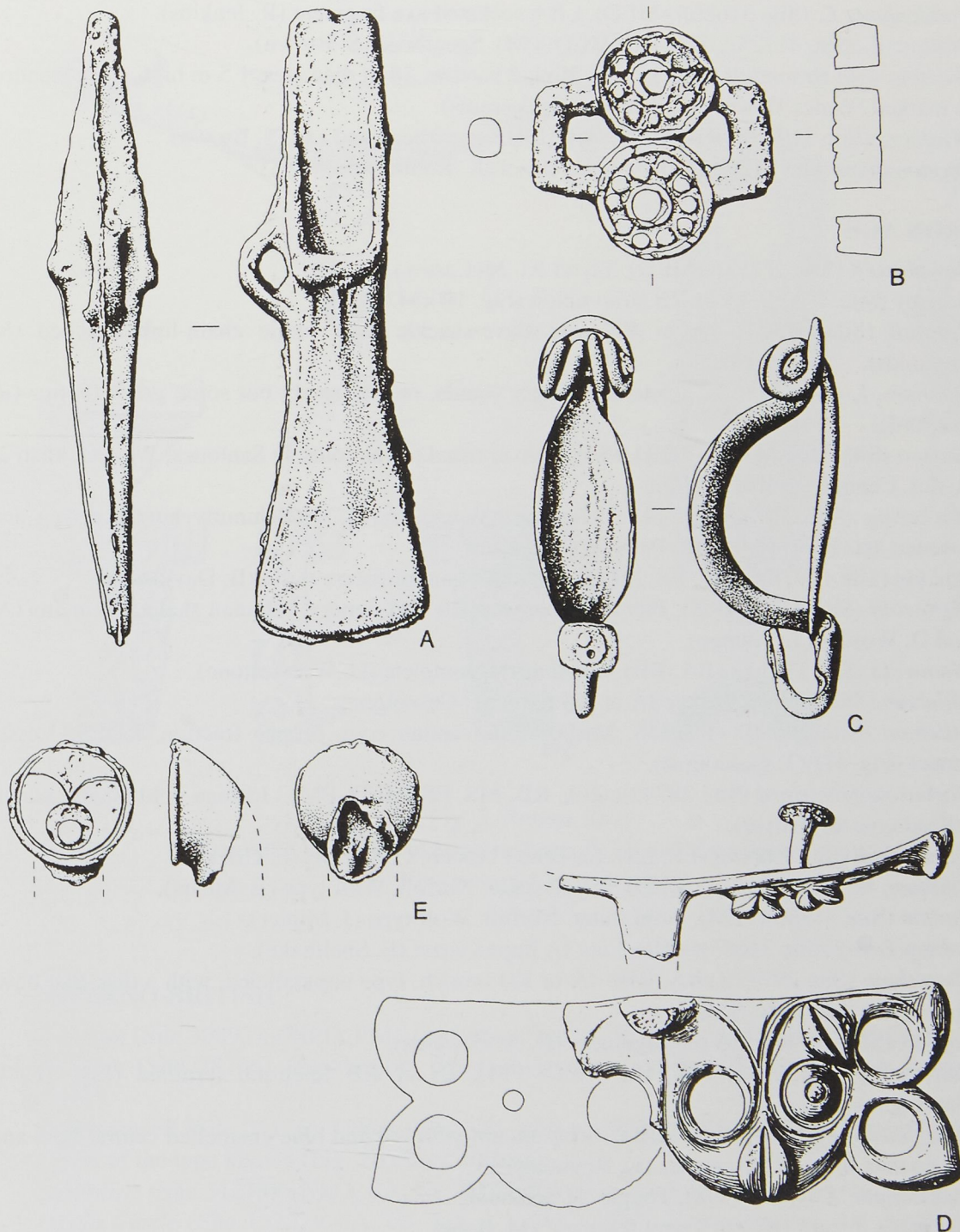


Fig. 1 Bronze Age and Iron Age finds

A: BA palstave from Creake. B: IA or RB strap-union from Bawsey. C: IA brooch from Hockering. D: IA vessel mount from Mileham. E: IA linch-pin terminal from Tattersett.

Scale 1:1, except A scale 1:2



- Stow Bardolph* (Site 31471). LBA socketed axe, with remains of wooden haft in socket (S. Brown).
- Tattersett* (Site 31293)(+MED, PM). EBA tanged dagger (T. Gascoigne).
- Thorpe St. Andrew* (Site 31078)(+RB). EBA flat axe (L. Laing).
- Tuddenham, E.* (Site 31686)(+MED). LBA socketed axe fragment (R. Jenkins).
- Walton, E.* (Site 31125)(+BA, RB, MED, PM). Spearhead (S. Brown).
- Weeting with Broomhill* (Site 15525). Round barrow, 18 m diameter, 1.5 m high. This location is marked 'Wafes Howe' on C17 map (K. Sussams).
- Westacre* (Site 31075)(+RB, MED, PM). MBA spearhead and axe (S. Brown).
- Wymondham* (Site 31269). LBA tanged chisel (K. Robinson).

## IRON AGE

- Bawdeswell* (Site 31213)(+MED). Terret (G. McCarthy).
- Bawsey* (Site 31208). IA or RB strap-union (Fig. 1B)(M. Yates).
- Bunwell* (Site 31504). IA or RB iron slave-shackle with single chain-link attached (K. Reynolds).
- Dunham, L.* (Site 31112). Scatter of pottery sherds, mostly sandy but some gritty fabrics (R. Ludford).
- Gayton* (Site 31620)(+RB, MED, PM). Two unusual silver coins 1) Santones, West Gaulish 2) Aedui, Central Gaulish (J. Wells).
- Hockering* (Site 31058). La Tène I brooch, 'Wessex type', with dummy hinged spring and wooden axis bar (Fig. 1C)(R. Pitt/I. Woodhouse).
- Loddon* (Site 17978)(+RB, ES, MED). Late IA plain miniature terret (B. Davidson).
- Methwold* (Site 4790)(+RB). Pits with loomweights and pottery. Human skeletal remains (A. and D. Wortley, J. Younge).
- Methwold* (Site 17713)(+BA, RB). Small terret, complete (D. Woollestone).
- Mileham* (Site 51511). Simple IA or RB terret (T. Gascoigne).
- Mileham* (Site 30999)(+IA, MS, MED). Trinovantian coin, bronze fraction, RUES. Vessel mount (Fig. 1D)(T. Gascoigne).
- Narborough/Narford* (Site 28742)(+BA, RB, MS, ES, MED, PM). Icenian gold quarter stater, Irstead type (A. Oliver).
- Quidenham* (Site 29888)(+ES, LS). La Tène I brooch, C5/C4 BC (E. Crick).
- Rudham, W.* (Site 30842)(+MED). Plated stater, Norfolk Wolf type (B. Mears).
- Runton* (Site 31386)(+PM). Gold stater, Norfolk Wolf type (J. Minter).
- Saham Toney* (Site 31685)(+RB). Late IA lipped terret (E. Sheldrake).
- Shotesham* (Site 29777)(+BA, RB). IA or RB brooch, type unparallelled, with a disc-like bow, open in the centre (A. Scott).
- Stiffkey* (Site 31440). ?IA pit-alignment (D. A. Edwards).
- Tattersett* (Site 30286)(+ES, LS, MED, PM). IA or RB linch-pin terminal (Fig. 1E)(T. Gascoigne).
- Tharston* (Site 31364)(+LS, MED). Strap-mount with red and blue enamelled central boss and red enamel inlay in the corners (K. Reynolds).
- Tuddenham, E.* (Site 31498). Toggle (R. Jenkins).
- Walsham, S.* (Site 18330). Terret fragment (M. Bone).
- Weybourne* (Site 31088)(+RB, MED, PM). Miniature head, ?from handle (D. Coleman).



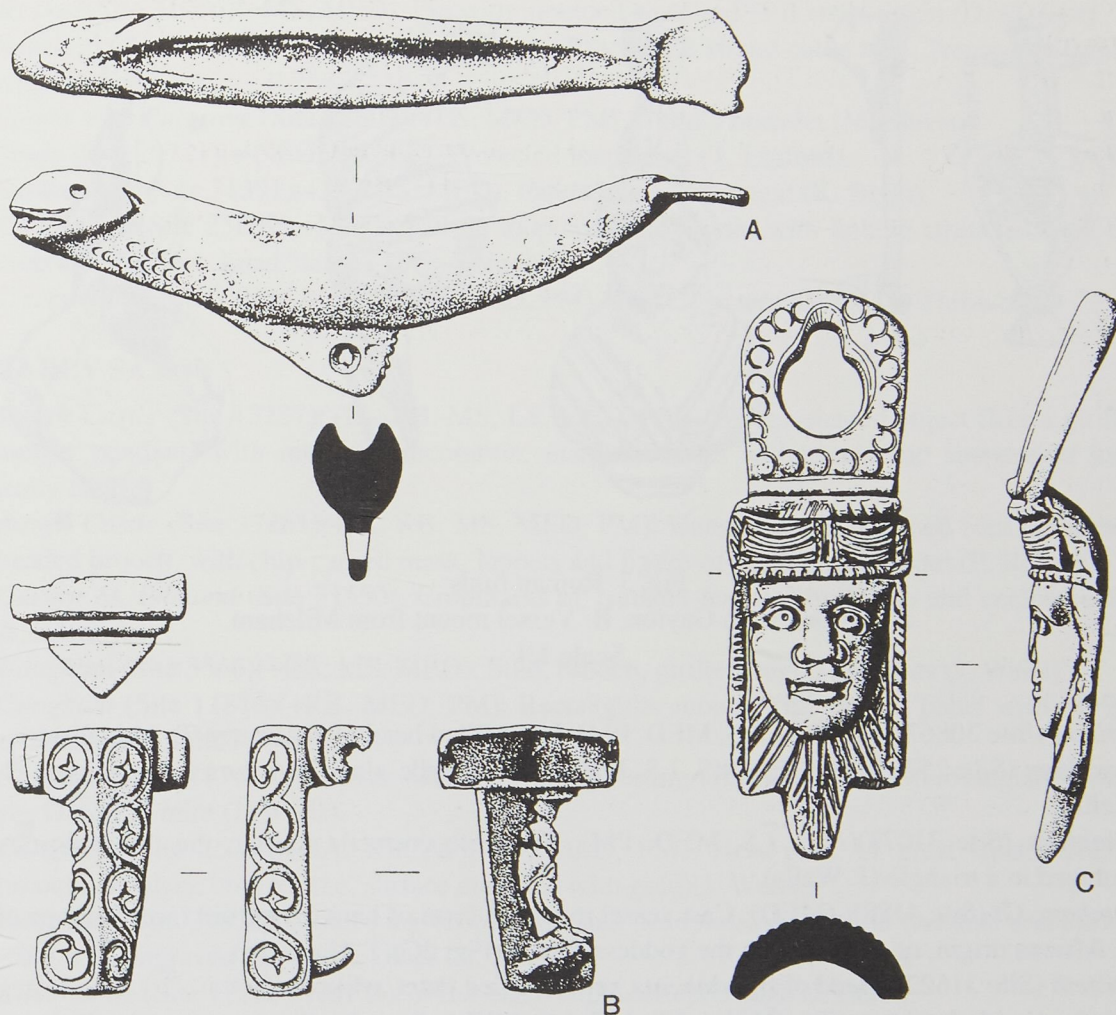


Fig. 2 Roman finds

A: Cosmetic mortar from Hindringham. B: Brooch from Beachamwell.

C: Vessel mount from Dunham.

Scale 1:1

### ROMANO-BRITISH

*Aylsham* (Site 30893)(+MED, PM). Cast vessel handle, with lobe in low relief (P. Purdy).

*Banham* (Site 28766). Zoomorphic figure fragment, depicting ?lion's mane or ?wings (D. Harty).

*Beachamwell* (Site 31126). Unusual brooch, with scroll decoration and red enamel. Only 2-3 others of the type known (Fig. 2B)(M. Carlile).

*Besthorpe* (Site 31239)(+NEO, BA, IA, MED, PM). Complete iron spoon-bit (E. Savery).

*Burgh Castle* (Site 13227)(+IA, ES, MS, LS, MED, PM). Venus figurine and phallic mount (rally finds).

*Caistor St. Edmund* (Site 9791)(+MED). Rare brooch, P-shaped, with triple bow, scalloped fin and tinned (D. Sutton).





Fig. 3 Roman finds  
 A: Brooch from Gayton. B: Vessel mount from Mileham.  
 Scale 1:1

- Colkirk* (Site 30867)(+ES, MS, LS, MED, PM). Lead-filled head of ?Mercury (P. McAllister).  
*Congham* (Site 25765)(+IA, ES, MS, LS, MED, PM). Girdle plate from *lorica segmentata* (J. Wells).  
*Congham* (Site 31073)(+ES, LS, MED, PM). Tripartite cosmetic mortar, the three mortars arranged in a triangle (J. Wells).  
*Dunham, Gt* (Site 4188)(+MED). Cast vessel mount in form of human negroid face. Perhaps of N. African origin, or representing the goddess Venus (Fig. 2C)(T. Harcourt).  
*Emneth* (Site 31622). Head of figurine, not yet identified (M. Carlile).  
*Flitcham with Appleton* (Site 3481)(+ES, MS, LS, MED). Rare Birdlip-type brooch. Early to mid-C1 (J. Burke).  
*Gayton* (Site 31560)(+MED, PM). Enamelled plate brooch in form of flagon (Fig. 3A)(J. Wells).  
*Hindringham* (Site 25007)(+LS, MED, PM). Centre-loop cosmetic mortar in the form of a fish (Fig. 2A)(P. West).  
*Hockering* (Site 31517). Cropmark of square enclosure, possibly a signal station (D. A. Edwards).  
*Holme Hale* (Site 22649)(+MED). Late RB openwork buckle (A. Lupton/E. Sheldrake).  
*Long Stratton* (Site 25916)(+BA, IA, PM). Protected loop terret (P. Thrower).  
*Lopham, N.* (Site 30454)(+PM). ?RB or ?ES ?vessel lid/handle, rather like a stylised animal-head, and with oval opening in centre and punched dots on one face (P. Leeder).  
*Methwold* (Site 4790)(+IA). Box tile, painted plaster, animal bones, slag, waste silver, pottery and human skeletal remains (A. and D. Wortley, J. Younge).  
*Mileham* (Site 30999)(+IA, MS, MED). Helmeted bust of Minerva, possibly a vessel mount (Fig. 3B)(T. Gascoigne).  
*Quidenham* (Site 31316)(+ES). End-loop cosmetic pestle (E. Crick).  
*Rudham, W.* (Site 30883)(+ES, MED, PM). Fragment of window glass (B. Mears).  
*Runton* (Site 31069). Protected loop terret (J. Lemmon).



- Ryston* (Site 31096)(+MS, MED). Pin with moulded head and ?RB strap-union (D. Mallett).  
*Snoring, Gt* (Site 2123)(+ES, MS, LS, MED). Bracelet, 2-strand cable type, ?reused as finger-ring (B. Grieves).  
*Sporle with Palgrave* (Site 28809)(+LS, MED, PM). Child's bracelet (M. Slaven).  
*Stody* (Site 29721)(+ NEO, BA, LS). Protected loop terret (T. Linford).  
*Surlingham* (Site 31391)(+IA, MS, MED). Patera handle fragment (K. Blyth).  
*Syderstone* (Site 25299)(+MED). Centre-loop cosmetic mortar with linking struts between the loop and the bow. Lead ?lamp (T. Gascoigne).  
*Tivetshall St. Mary* (Site 31307)(+LS, MED, PM). Mid C1 patera handle (P. Thrower).

### EARLY SAXON

- Burgh Castle* (Site 13227)(+IA, RB, MS, LS, MED, PM). Wedge-shaped object (like a girdle-hanger pendant) with interlace decoration, marginal holes with rivets and suspension loop (rally find).  
*Burgh Castle* (Site 17261)(+IA, RB, MS, MED, PM). Unusual tongue-shaped foot of square-headed brooch, with chip-carved mask, lappets and figure-of-eight chain border (P. Rilings).  
*Caistor St. Edmund* (Site 31550). Cropmarks of ?sunken-featured buildings and enclosure (D. A. Edwards).  
*Congham* (Site 3566)(+RB, MS, MED). Stud, brooch, girdle-hanger, pendants (J. Wells).  
*Congham* (Site 11816)(+RB, MED, PM). Rectangular mount with sunken panel with Style I ornament in relief (J. Wells).  
*Congham* (Site 11743)(+RB, LS, MED, PM). Supporting-arm brooch. C6 Merovingian tremissis, Dorestad mint (J. Wells).  
*Congham* (Site 25765)(+IA, RB, MS, LS, MED, PM). Head-plate of great square-headed brooch, of 'black bronze' (i.e. surface enriched with gold)(J. Wells).  
*Deopham* (Site 29875). Small-long brooch, unusual headplate, straight on one side and curved wing with engraved star on the other (A. Kedge).  
*Kilverstone* (Site 17268)(+MED). Wrist-clasp with scalloped edge (J. Betts).  
*Letheringsett with Glandford/Thornage* (Site 31596)(+LS, MED). Vessel or drinking-horn mount, gilded triangular sheet with Style I ornament (G. McCarthy).  
*Loddon* (Site 17982)(+RB, MED). Brooches, wristclasp, oval buckle (B. Davidson).  
*Long Stratton/Tasburgh* (Site 16838). Radiate brooch and girdle-hanger (R. Reynolds).  
*Lopham, N.* (Site 30359)(+LS). Gilded wrist-clasp with central face-masks, boss with ?shell inlay and chip-carved animal ornament (B. Love).  
*Quidenham* (Site 19544)(+ RB, MED, PM). Stylised animal head with loop for hinge (E. Crick).  
*Quidenham* (Site 29888)(+IA, LS). Mount with central lozenge-shaped plate and Style I animal-head with eye at each end (D. Lucken).  
*Quidenham* (Site 31316)(+RB). Ear-scoop with suspension loop and moulded shank (E. Crick).  
*Saham Toney* (Site 31694). Iron socketed spearhead (R. Gapp).  
*Tivetshall St. Mary* (Site 11008)(+RB, MED). Small-long brooch. ?ES suspension ring (K. Reynolds).  
*Warham* (Site 1843)(+PM). Complete small-long brooch (J. Preston).

### MIDDLE SAXON

- Burgh Castle* (Site 10486)(+RB, ES, MED, PM). Ansate brooch (rally find).  
*Congham* (Site 3566)(+RB, ES, MED). Pin. Scaet, Series D, c. 710-715 (J. Wells).



- Dunham, Gt* (Site 31580). MS or LS silver belt-slide with niello inlay (D. Woollestone).  
*Hickling* (Site 8393). Sherd from St Mary's church (A. Rogerson).  
*Ingworth* (Site 21830). MS/LS buckle-frame with relief animal heads at corners and forming pin-rest (C. Stamp).  
*Keswick* (Site 13991). Disc brooch with openwork equal-armed cross, derived from Carolingian prototype (D. Howlett).  
*Letheringsett with Glandford* (Site 31167)(+BA, RB, LS). C8 mount from book cover or vessel, with polychrome (blue, white) glass inset (G. Owen).  
*Lopham, N.* (Site 30181). Strap-end. Imported Viking lozenge-shaped brooch (E. Crick).  
*Mautby* (Site 31209). C9 lozenge-shaped Viking brooch (G. Cook).  
*Narborough/Narford* (Site 28742)(+BA, IA, RB, ES, MED, PM). Porcupine sceat, Series E, c. 710-30 (A. Oliver).  
*Oxborough* (Site 1021)(+RB, MED). ?Spoon bowl with ring-and-dot decoration (S. Brown).  
*Rudham, W.* (Site 30441). Cast decorative mount fragment, Irish, c. 800 (B. Mears).  
*Runcton Holme* (Site 2432)(+IA, RB, LS, MED, PM). Sherds in churchyard (A. Rogerson).  
*Ryston* (Site 31096)(+RB, MED). Unusually large champleve enamel plaque, with animal motifs. Possibly C9 Irish (D. Mallett).  
*Walton, E.* (Site 19635). Sceat, continental runic, Series D, c. AD 710-715 (T. Norman).  
*Witchingham, Gt* (Site 7475)(+MED, PM). Sherd of Ipswich Ware from St Faith's churchyard, Little Witchingham (A. Rogerson).

#### LATE SAXON

- Corpusty* (Site 6681)(+RB). LS (Viking) or MS buckle-frame, with 2 cat-like animal heads in the round (M. Bone).  
*Dereham, W.* (Site 31151)(+RB, MED). Ringerike cheek-piece with 'tendrill' mane of ?animal head (E. Sheldrake).  
*Gresham* (Site 31501). C10 imported disc brooch with Jellinge-style animal (G. Owen).  
*Hockwold cum Wilton* (Site 5455). Viking silver ingot, late C9 (E. Sheldrake).  
*Holt* (Site 18103)(+RB, ES, MED, PM). ?Harness mount and box/stirrup mount, both with Ringerike-style animal heads (G. McCarthy, G. Owen).  
*Lopham, S.* (Site 31413). Gold alloy Viking amulet in form of Thor's hammer (B. Love).  
*Lopham, S.* (Site 31336). Lead disc brooch with central cross, ribbed, pelleted and billeted border, and relief cross on reverse (Fig. 4A)(E. Crick).  
*Quidenham* (Site 24050). Finger-ring with tapering terminals (E. Crick).  
*Quidenham* (Site 30350)(+ES). Key with openwork oval bow and suspension loop (E. Crick/D. Lucken).  
*Quidenham* (Site 29674). C10 gilded enamelled disc brooch, with central 7-sided motif with turquoise enamel, and 7 semi-circular cloisons and 4 large and 8 small projecting lobes all with dark blue enamel (Fig. 4B)(D. Lucken).  
*Reepham* (Site 3150)(+RB, MED, PM). Buckle, cast to look twisted, ?Viking (B. Grieves).  
*Shipdham* (Site 31179)(+RB, LS, MED, PM). Bridle cheek-piece terminal (D. Sheldrake).  
*Surlingham* (Site 31390). Tiny folding balance with pointer and hinged arms (A. Blyth).  
*Tharston* (Site 31364)(+IA, MED). Triangular box-mount with quadruped in low relief (K. Reynolds).  
*Upwell* (Site 29193)(+MED, PM). Viking-type buckle, in form of flat fox-like animal (M. Carlile).  
*Walton, E.* (Site 31125)(+BA, RB, MED, PM). Two lead brooches, one with billeted border,





Fig. 4 Late Saxon finds  
 A: Brooch from Lopham. B: Brooch from Quidenham.  
 Scale 1:1

cross motif and pellets, the other with lozenges forming cross motif (S. Brown).  
*Walton, W.* (Site 18947)(+MS, MED). Shield-shaped hooked tag. Winchester-style strap-end (M. Carlile).

### MEDIEVAL

*Beeston Regis* (Site 31161). Late MED harness pendant, 8-sided, with incurving sides, and enamelled lion rampant crowned (R. Leonard).

*Bradenham* (Site 30636)(+RB, ES, MS). Three belt-mounts with almost-identical human face-masks (R. Chamberlin).

*Catfield* (Site 31344). Four miniature vessels/tankards cast together for later separation into individual ?pilgrim signs or ?toys (G. Cook).

*Docking* (Site 31215)(+RB, MS, PM). C14 seal matrix, bird in centre, inscription JE ISI PAR TI around (?I have left here')(D. Bird).

*Emneth* (Site 22564). Unusual heart-shaped button (M. Carlile).

*Field Dalling* (Site 31558). Unusual continental coin, C13, Abbey of Corvez, Westphalia (T. Hudson).



- Halvergate* (Site 14773). C14 sword-belt fitting with engraved tree-like motif (G. Simmonds).
- Holt* (Site 31352). C12/C13 double swivel-leash fastener with finely-moulded animal-head terminals (G. Owen).
- Loddon* (Site 17982)(+RB, ES). Lead circular seal matrix, SIGIL : GALFRIDI : I DRI + (B. Davidson).
- Ludham* (Site 24864). C12 Romanesque animal-head fastener/buckle (R. Budds).
- Quidenham* (Site 30368)(+ES). Fragment of inscription on bronze plate, Lombardic script NRIIG (?), possibly a mount from wooden vessel or mazer (E. Crick/B. Love).
- Rackheath* (Site 31541). 3-4 inhumations, probably from churchyard of Rackheath Parva church (A. Rogerson).
- Reepham* (Site 3150)(+RB, LS, PM). C13 gilded silver ring-brooch, the ring formed by the scaly bodies of four winged dragons (B. Grieves).
- Saham Toney* (Site 31486)(+BA, RB). Door-knocker or lock-plate handle, bar decorated with inlaid zig-zag wire and symmetrically-placed bosses (R. Gapp).
- Scarning* (Site 16366). Monastic masonry in C19 barn, probably from Wendling priory (E. Rose).
- Shipdham* (Site 31489). Gilded human head, probably C13 from Limoges enamel-type shrine or casket (E. Sheldrake).
- Sporle with Palgrave* (Site 28569)(+IA, RB, PM). C13 half-round enamelled half-figure of saint, from Limoges shrine or casket. Traces of blue enamel and glass inset eyes (M. Slaven).
- Tattersett* (Site 31295)(+RB, LS, PM). Pilgrim's badge/pendant with cloaked and crowned St Margaret lancing dragon (B. Mears).
- Tuddenham, E.* (Site 31042)(+RB, LS). C14 seal matrix with central motif of stag's head with cross between (symbol of St Hubert) and illegible inscription (A. Lupton).
- Walton, W.* (Site 25852). Gilded early MED buckle/belt-slide in form of bird (M. Carlile).
- Weasenham All Saints* (Site 3726)(+ RB, LS, PM). Unusually large C13 mirror case with decoration of applied sub-circular plates and tiny projecting bosses (J. Burke).
- Wreningham* (Site 28494). C13 gilded buckle plate with low relief mythological bird/creature (A. Kedge).

#### POST-MEDIEVAL

- Postwick* (Site 31087)(+RB). Miniature chalice/goblet (D. Parker/K. Canham).
- Warham* (Site 29433). C17 gold memorial ring, inscribed ANN CALTHORPE OB 10 JUN : 95 (J. Preston).