

94. Lead, flat with rib and two lugs on reverse. Pointed oval, lower half only (cut). Surviving dimensions 24 x 23 mm. Fleur-de-lis.I SOCd: A..... Cawston 19522.
 95. Lead, flat. Pointed oval, lower part only survives. Central motif illegible.DISCVV...E Cawston 32896.
 96. Seal patrix. Lead, lug at top. Circular, 37 mm. 9-petalled flower. +VNI· CRISTINE. Outer ring of decorative petal shapes. Beetley 17221.
- 1 Illustrations and descriptions of five seals used by the Talbots (or Talebots) of Fincham are given in G.H.D. (1847, pl.2 no.3, pl.5 no.1 and pl.8 no.4; 1862, pl.4 no.7 and pl.6 no.5). The MSS to which these seals are attached are housed in the Norfolk Record Office (NRO Hare of Stowe-Bardolph Collection). Three of the five seals are armorial, two bearing the arms *Six sinister hands three two and one* (probably derived from the Wauncys, of whom the Talbots were tenants: GHD 1862 PS). The remaining seal is that of Peter Talbot (on an indenture of 3 November 1325) which displays *Three talbots two and one on a chief a lion passant* (NRO Hare 1277, 191 x 3). These arms are clearly related to those of Richard Talbot, figured here, and further research may reveal the exact nature of this familial relationship.

BIBLIOGRAPHY

- Ashley, S. and Rogerson, A., 1998. 'A Norfolk Hundred seal matrix recently found in Kent', *Norfolk Archaeol.* XLIII pt. I, 180-1.
- Blomefield, F., 1805. *An Essay Towards a Topographical History of the County of Norfolk*, Volume II (London)
- Blomefield, F., 1807. *An Essay Towards a Topographical History of the County of Norfolk*, Volume VII, continued by C. Parkin (London)
- G.H.D[ashwood], 1847 and 1862. *Engravings from Ancient Seals attached to Deeds and Charters in the Muniment Room of Sir Thomas Hare Baronet of Stowe-Bardolph*, *Sigilla Antiqua* (Stowe Bardolph, 2 vols)
- Harvey, P.D.A. and McGuinness, A., 1996. *A Guide to British Medieval Seals* (London)
- Tonnochy, A.B., 1952. *Catalogue of British Seal-Dies in the British Museum* (London)

ARCHAEOLOGICAL FINDS IN NORFOLK 1998

edited by David Gurney

This is a selection of important finds (from an estimated total of more than 12,000 object identifications), details of which have been entered during 1998 onto the Norfolk Sites and Monuments Record. The Norfolk SMR is maintained by the Norfolk Museums Service's Landscape Archaeology Section at Gressenhall, and may be consulted by appointment. The list may include items found in earlier years but which were only entered onto the SMR during 1998.

The entries are arranged by period and, within each period, by parish alphabetically. The number after the parish name is the Norfolk SMR number. Grid references have been omitted at the request of finders.

Metal artefacts are of copper alloy (bronze) and Iron Age, Saxon and medieval coins are of silver unless otherwise stated.

Norfolk Landscape Archaeology and the Archaeology Department of Norwich Castle Museum are most grateful to all those who bring in finds for identification, thereby contributing to the SMR and this annual list. The assistance of Peter Robins (flint identifications) and colleagues in other institutions, especially the British Museum and the Fitzwilliam Museum, Cambridge, in the identification of finds is gratefully acknowledged. The majority of the finds listed have been found in the course of metal-detector survey, but the list also includes fieldwalking finds and new discoveries of sites either by field observation or by aerial photographic survey. The illustrations are by Steven Ashley (Fig. 1) and Sue White (Figs 2-6).

Palaeolithic (pre-10,000 BC)

- Cranwich* 33292. Flat butted cordate hand axe and another incomplete hand axe (M. Stubbings and D. Woollestone).
Feltwell 32957. Ovate hand axe, 'tea cosy' core and flake (D. Woollestone). Also nine hand axes, including four sharp 'Wolvercote Channel' type (E. and R. Secker).
Fransham 23080. Scraper (D. Woollestone).
Southacre 15725. Large number of handaxes, cores and flakes (R. MacCrea).

Mesolithic (10,000-4000 BC)

- Boughton* 33298. Late Upper Palaeolithic or Mesolithic burin (A. Oliver).
Corpusty 32964. Mesolithic or Neolithic flaked axe/adze (J. Pooler).
Northrepps 33237. Mesolithic or Neolithic or Bronze Age incomplete perforated pebble hammer (J. Mindham).

Neolithic (4000-2000 BC)

- Brumstead* 8223. Polished flint axe (T. English).
Costessey 28422. Neolithic or Bronze Age oblique and tanged arrowheads and plano-convex knife (P. Alden).
Feltwell 5261. Fragment of flint sickle blade (E. and R. Secker).
Horsham St. Faith 30074. Flaked axe reduced from a larger polished axe, with only traces of polish remaining. Also an axe flake, 'fabricator' or rod, 'strike-a-light' and notched flake (B. Matthewson and D. Fox).
Kenninghall 21984. Polished flint axe (J. Bassam).
Larling 31402. Laurel leaf (P. Barry).
Lessingham 21649. Stone axe (R. Ferguson and T. Pestell).
Letheringsett with Glandford/Wiveton 33796. Concentration of Late Neolithic or Bronze Age flints and a 'potboiler' site (E. Savery).
Little Barningham 33384. Probable NEO scraper/knife (P. Dawson).
Methwold 22051. Large stone axe hammer (J. Darby).
North Tuddenham 33797. Stone axe (R. Nelson).
Postwick 13603. Flaked flint axe fragment, probably the butt end broken in preparation (R. Crawford).
Repps with Bastwick 33268. Flaked axe (P. Pratt).

Bronze Age (2000-650 BC)

- Ashill* 33397. Unlooped MBA palstave, with indented shield below stop ridge (R. Lovick).
Banham 31207. ?LBA socketed axe mouth fragment (M. Yates).
Blakeney 33819. Axe fragment (T. Williams).
Bradenham 33370. LBA sword fragment, Ewart Park type, 900-800 BC (R. Roberts).
Cley-next-the-sea 33526. Cropmarks of ?Bronze Age enclosure with double concentric ring-ditch and two single ring-ditches, and a small ovoid enclosure adjacent (D.A. Edwards).
Congham 25765. LBA razor fragment, with multiple engraved line decoration. c. C7 BC (J. and P. Wells).
Corpusty 32872. MBA small half flanged axe, not full size so possibly a chisel (P. Dawson).
Felmingham 24242. LBA socketed axe fragment, Ewart Park type, 800-650 BC (C. and S. Thorpe).
Fransham 25560. MBA side-looped spearhead, 1600-1100 BC (J. Aldridge).
Fring 11775. LBA awl (J. Bocking).

- Fring* 33395. ?BA awl or chisel tang (J. Bocking).
Garveston 8842. MBA socketed spearhead with leaf-shaped blade, central rib and loops set mid-socket (Fig. 1A)(J. Graham).
Garveston 33571. LBA socketed axe with double mouth moulding, loop and on each face and five ribs ending in a pellet (Fig. 1B)(J. Graham).
Hevingham 33248. Palstave fragment (D. Lieurance).
Letheringsett with Glandford/Wiveton 33796. Scatter of late Neolithic or Bronze Age sand/flint/grog-tempered sherds (E. Savery).
Morley 33658. Large plate fragment, probably from a very large blade (W. Brooker).
Salle 30429. Awl? (R. Saunders).
Shouldham 28645. LBA ?razor; a thin blade flaring from a plain butt to a curved cutting edge, but no piercing or attachment ring so probably unfinished (H. Moore).
Skeyton 33648. EBA flanged axe, 1900-1700 BC (C. Thorpe).
Snettisham 32135. LBA large socketed axe fragment, Ewart Park type, 900-800 BC (M. Gibbons).
Stody 29721. LBA chunky ring, possibly a spindle whorl (T. Linford).
Stoke Ferry 33570. Rapier blade fragment, Pennard phase, 1300-1100 BC. Found in a peat-filled hollow, so possibly a 'wet-place' deposition of ritual significance (A. Oliver).
Wicklewood 33334. EBA chisel (W. Brooker).

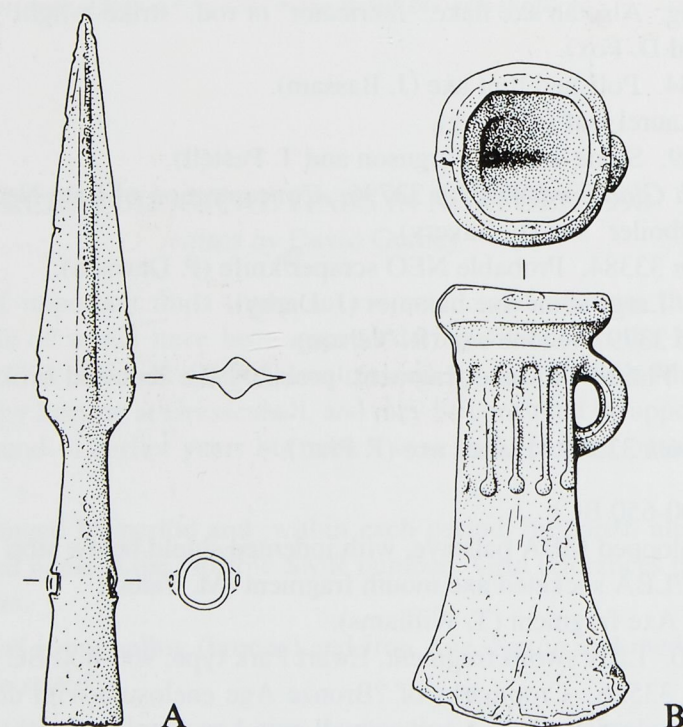


Fig. 1. Bronze Age spearhead (A) and socketed axe (B) from Garvestone. Scale 1:2.

Iron Age (650 BC-AD 43)

- Banham* 31207. Fragment of terret hoop and lip moulding (M. Yates).
Briston 33440. Flat-ringed or crescent terret fragment, with red and blue enamelled Celtic design (Fig. 2A). Also three coins: Icenian base stater 'Norfolk Wolf' type; Icenian silver unit Boar-Horse B; Trinovantian gold stater Late Clacton type (P. Dawson).

Broome 33399. Linch pin terminal (Fig. 2B). Rounded body with domed trumpet decoration around a circle of red enamel. The flat end has curvilinear decoration, also enamelled (B. Davidson).

Congham 11816. Terret hoop fragment (J. and P. Wells).

Congham 25765. Terret fragment (J. and P. Wells).

Fring 33627. Fragment from an openwork object (J. Bocking).

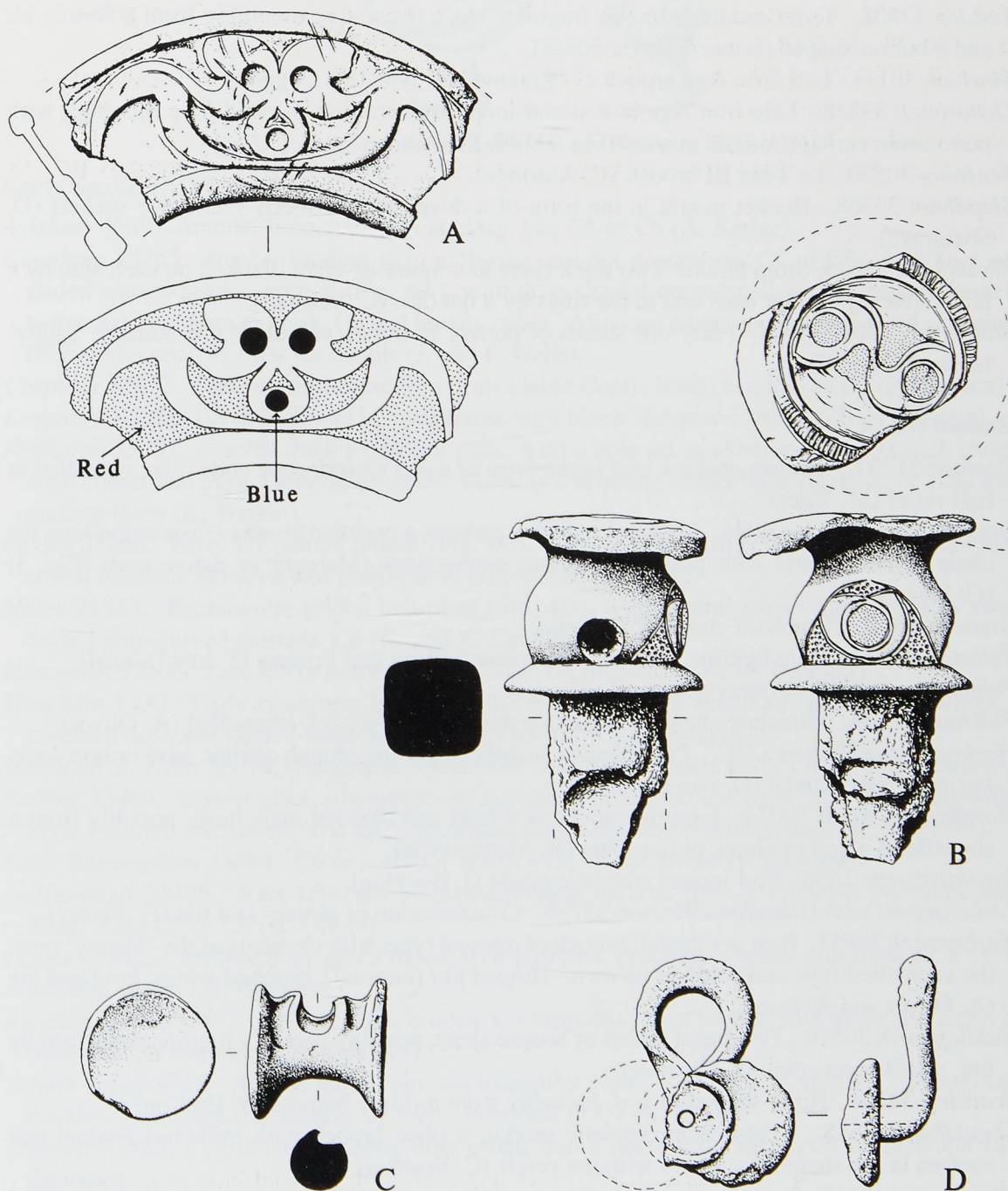


Fig. 2. Iron Age enamelled terret from Briston (A), linch pin terminal from Broome (B), toggle from Hanworth (C) and fastener from Oxborough (D). Scale 1:1.

- Fring* 33395. D-shaped ring, decorated with grooves, dished circles and moulded chevrons, perhaps a harness fitting (J. Bocking).
- Hanworth* 33645. Late Iron Age toggle (Fig. 2C). A waisted cylinder with dished ends, pierced flange on one side and white-metal coating (P. Dawson).
- Horsham St. Faith* 30074. Trinovantian silver unit, Cunobeline (B. Matthewson).
- Little Barningham* 33384. Large terret hoop fragment (P. Dawson).
- Little Snoring* 29132. Neck ring fragment. Solid, but of segmented appearance, each 'bead' with banded decoration (B. George).
- Loddon* 17808. Terret saddle bar/hoop fragment. Also decorative moulding from a ?bridle bit and a button-shaped fastener (B. Davidson).
- Marham* 30111. Late Iron Age brooch of 'Knotenfibel' type (M. Coggles).
- Oxborough* 33538. Late Iron Age button-and-loop fastener, double-lobed (one missing), with perforation perhaps to hold enamel (Fig. 2D)(P. Briers).
- Scarning* 30530. La Tène III brooch (C. Aldridge).
- Shipdham* 33368. Bucket mount in the form of a dove, with formerly-inlaid eye sockets (D. Sheldrake).
- Shouldham* 28645. Strap union. Two thick rings in a figure-of-eight, flanked on each side by a pin which is joined at each end to the rings by a flat disc (C. Seaman).
- Stoke Holy Cross* 33104. Forty-one sherds of pottery from two vessels in a handmade 'sandy' fabric (J. Harrell).

Roman (AD 43-410)

- Banham* 31207. ?Roman artefact, cast in the form of a dog's head, neck and collar, modelled in half-relief (M. Yates).
- Beeston with Bittering* 4084. Cockerel figurine, perhaps a personal amulet (suspension loop for chain or string) and with possible religious connections (Mercury or native god) (Fig. 3) (G. Parsons).
- Briston* 33440. ?Scabbard chape (P. Dawson).
- Felbrigg* 33827. Male figurine, probably the rustic fertility god Priapus (T. MacDonald).
- Felmingham* 33708. Pottery scatter (C. Thorpe).
- Fincham* 18849. Miniature stand or stool, two tiers of three extant, enamelled (A. Oliver).
- Hockwold-cum-Wilton* 33367. Possible iron hoard comprising plough coulter, adze or hoe, lock, key and hippo-sandal (G. von Bismark).
- Horsham St. Faith* 30074. Figurine/mount of a bald and bearded male head, possibly from a statuette of a god or Greek philosopher (B. Matthewson).
- Ingoldisthorpe* 1558. End-looped cosmetic pestle (J. Bocking).
- Letheringsett with Glandford/Wiveton* 33796. Concentration of pottery and tile (E. Savery).
- Narborough* 29851. Bow and fantail brooch of unusual type, with elements of the 'Maxey' type, the enamelled type and some of its own. Hinged pin (unusual), grooved wings, bow and leg (A. Oliver and A. Ison).
- Riddlesworth* 30519. Two fused pieces of bronze sheet, possibly part of a figurine destroyed by fire, and Roman coins (P. Thrower).
- Scarning* 34104. Heart-shaped mount, probably from military harness (V. Hudson).
- Shouldham* 28645. Centre-loop cosmetic mortar, a plate brooch with millefiori enamel and another in the shape of a flower with ten petals (C. Seaman).
- Wicklewood* 18111. Roman coins, including a *quadrans* of Hadrian, *rev.* Rostrum tridens r., RIC 2, 623a, AD 121-2, an extremely rare find in Britain (M. Coggles).

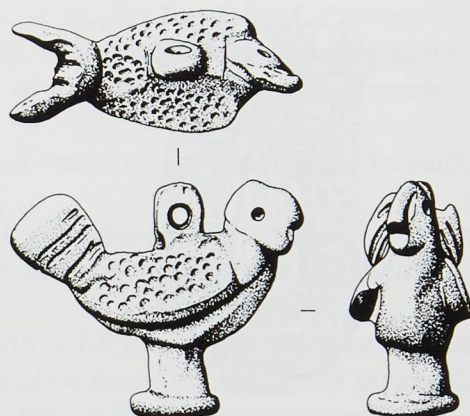


Fig. 3. Roman cockerel figurine from Beeston. Scale 1:1.

Early Saxon (AD 410-650)

Aylsham 7589. Annular brooch and wrist clasp, late C5 or C6 (A. Kedge).

Congham 25765. Bucket binding strip with ring-and-dot decoration, C5 to C7. Also foot of gilded square-headed brooch (Fig. 4A), with drop-shaped central cell with decayed enamel below a partial human mask, C6 and locally made. Also cast silver cocked-hat sword pommel (Fig. 4B) – see 1997 list for details (J. and P. Wells).

Corpusty 32872. Cast ring and vessel rim from a large Coptic bowl, first half of C7 (P. Dawson).

Corpusty 32962. ES or MS buckle, oval frame with black ?lacquer coating, C7 (P. Dawson).

Felthorpe 33091. Curved thick triangular plate, with a hole set in a flattened area at each short edge corner and Style I animal between. Possibly a drinking vessel/horn vandyke, or a die for making them (K. Wright).

Foxley 33866. Early C7 peltaic mount (Fig. 4C), Style II, with bird head to each side, double strand interlace between and guilloche at bottom (D. Howlett).

Hales 21515. Rectangular gilded belt-plate (Fig. 4D), with central garnet and border of two Style I chip-carved animals. C6 (K. and A. Canham).

Hanworth 33506. Late C5 or early C6 wrist-clasp on ring-ditch site (P. Dawson).

Heacham 1430. Early cruciform brooch, with central knob on headplate, small side 'wings', moulded bow and animal-head foot. Aberg Group I, C5 (J. Bocking).

Horsham St. Faith 30074. Large side-knob from cruciform brooch, early C6 (B. Matthewson).

Kelling 33446. Gusset plate, triangular and curved to fit around the wrist, and decorated with Style I animal ornament. The apex decorated with a human or animal mask (K. Wagstaff).

Little Barningham 33384. C6 or early C7 heavy oval buckle frame (P. Dawson).

Narborough 33306. Rare reversed S-shaped brooch, derived from a Frankish prototype *via* Kent. Late C5 or C6 (A. Oliver).

Pentney 33433. Strip of very green metal, well polished, probably a repair clip from a C5 - C7 wooden vessel (M. Coggles).

Runcton Holme 33872. C5 cruciform brooch, C5 supporting-arm brooch with triangular faceted bow, and C6 wrist-clasp (J. Coggles).

Saham Toney 8748. Buckle frame, pin and triangular plate, with Style II animals. Triangular buckles were worn exclusively by men. First half of C7 (R. Gapp).

Topcroft 32885. Cylindrical pendant, bent round into a horse-shoe shape, C7 or early C8 (S. Cushion).

West Rudham 32133. Two wrist-clasps, Hines type C1 (C6 AD) and type B1 (late C5 - early C6), the latter rare in England (A. Mears).

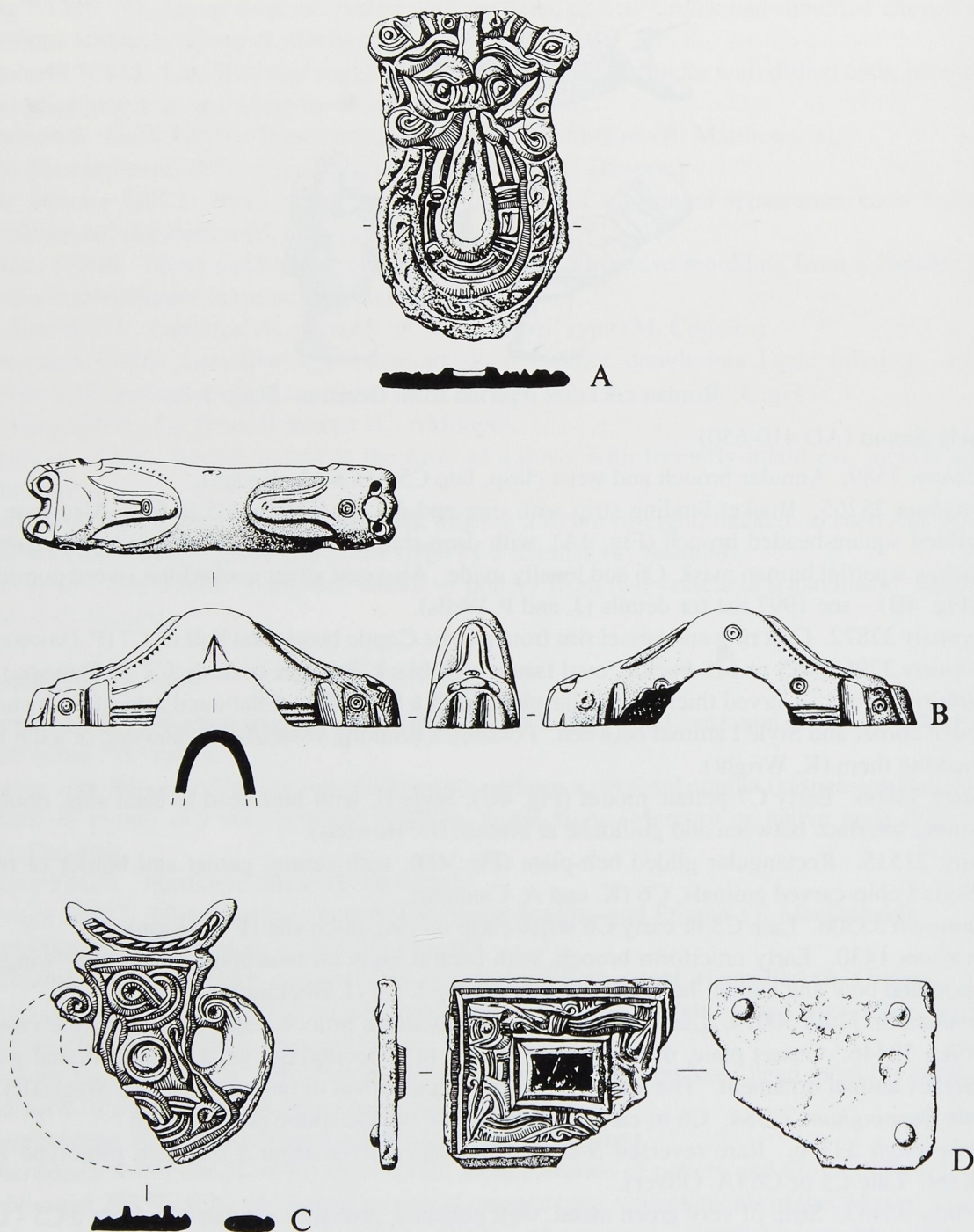


Fig. 4. Early Saxon brooch foot (A) and sword pommel (B) from Congham, mount from Foxley (C) and belt-plate from Hales (D). Scale 1:1.

Middle Saxon (AD 650-850)

Briston 33554. Series X sceat, Woden/monster type, AD 715-35 (P. Dawson).

East Walton 33610. Ansate brooch, C8 or C9 (M. Carlile).

- East Walton* 33498. Series C sceat, AD 700-710 (M. Carlile).
- Emneth* 2384. A remarkable unfinished casting for a strap-end, undecorated, casting flashes untrimmed, only the ears of the animal-head terminal visible. Probably MS or LS and C9 (M. Carlile).
- Hanworth* 33574. MS or LS strap-end with animal-head terminal and niello/silver inlay (N. Paul).
- Heacham* 28850. Strap-end with animal-head terminal, and a similar animal-head at the split end facing in the opposite direction. The field is inlaid with niello and silver wire spirals (J. Bocking).
- Horsham St. Faith* 30074. MS or LS strap-end with unusual animal-head terminal, the ears and nose made of identical elements placed as if in mirror image (B. Matthewson).
- Little Snoring* 29132. Disc brooch in odd ?pewtery metal, with backward-biting animal and ring-and-dot decoration (G. Parsons).
- Marham* 33436. MS or LS strap-end with long-eared animal-head terminal, possibly a rabbit (M. Coggles).
- West Rudham* 28130. Cross-shaped pendant, the side arms lozengiform and each engraved with a cross. Similar to contemporary cross-shaped brooches (A. Mears).

Late Saxon (AD 850-1066)

- Boughton* 33298. Stirrup angle mount, in the shape of a ?horse. Anglo-Scandinavian, C11 (A. Oliver).
- Congham* 25765. C10 pin (Fig. 5A). See 1997 list for details (J. and P. Wells). Also a disc brooch, gilded, with beaded rim, raised central field with cloisonné design of turquoise 7-pointed star in a dark blue field. Late C10 or C11 (J. and P. Wells).
- Corpusty* 33443. Unusual ?cast buckle plate (Fig. 5B), with border of inlaid niello and loose ?interlace panel. Mid C9 - mid C11 (P. Dawson).
- Corpusty* 33385. Bridle cheekpiece terminal fragment, with three knops (P. Dawson).
- Felmingham* 33635. Stirrup-strap mount, with well-modelled relief lion. C11 (C. Thorpe).
- Fring* 33627. Viking trefoil brooch with central triangular field (J. Bocking).
- Fring* 11775. Two Viking mounts (J. Bocking).
- Horsham St. Faith* 30074. Stirrup mount terminal in the shape of a foot. Anglo-Scandinavian (B. Matthewson and D. Fox).
- Kenninghall* 19026. Two Anglo-Scandinavian relief-decorated strap-ends (R. Stacey).
- Little Snoring* 2157. Openwork pendant (Fig. 5C), with a Borre-style gripping beast within a frame ornamented with animal heads. Silver or niello inlay. Parallels in the Varby (Sweden) hoard of c. AD 940 (G. Parsons).
- Morley* 33893. Bridle cheekpiece in the shape of an animal head, with arched neck, projecting ears, trefoil-ended nose and border of punched dots. Anglo-Scandinavian C11 (W. Brooker).
- North Walsham* 33633. C11 stirrup-strap mount, Williams Type 6, with two animal heads in relief with oval eyes, open jaws and long curly lips (C. Thorpe).
- Sprowston* 33928. Stirrup mount, near-rectangular, and decorated with a human face in low relief. These mounts reinforced the junction between the top of the stirrup and the stirrup leather. C11 (A. Halesworth).
- Swanton Abbott* 33634. Chunky finger ring with tapering overlapping ends (C. Thorpe).
- Thetford* 33933. Lovely bird brooch with some unusual features, most notably the cross that the bird appears to be holding. Ringerike style, Anglo-Scandinavian, C11. Also a exceptionally fine disc brooch decorated with a Jellinge-style animal. C10 (B. Fisher).

West Rudham 28131. Pendant or mount, decorated on one side in Ringerike style, with engraved borders and an engraved cross within an inverted triangle. C11 (A. and B. Mears).

West Rudham 32133. Important Carolingian-style strap-distributor (Fig. 6) with plant decoration, gilded and covered/inlaid with niello and silver wire. Of the late C9, from a north French workshop and probably brought here as a result of Viking activity (A. Mears).

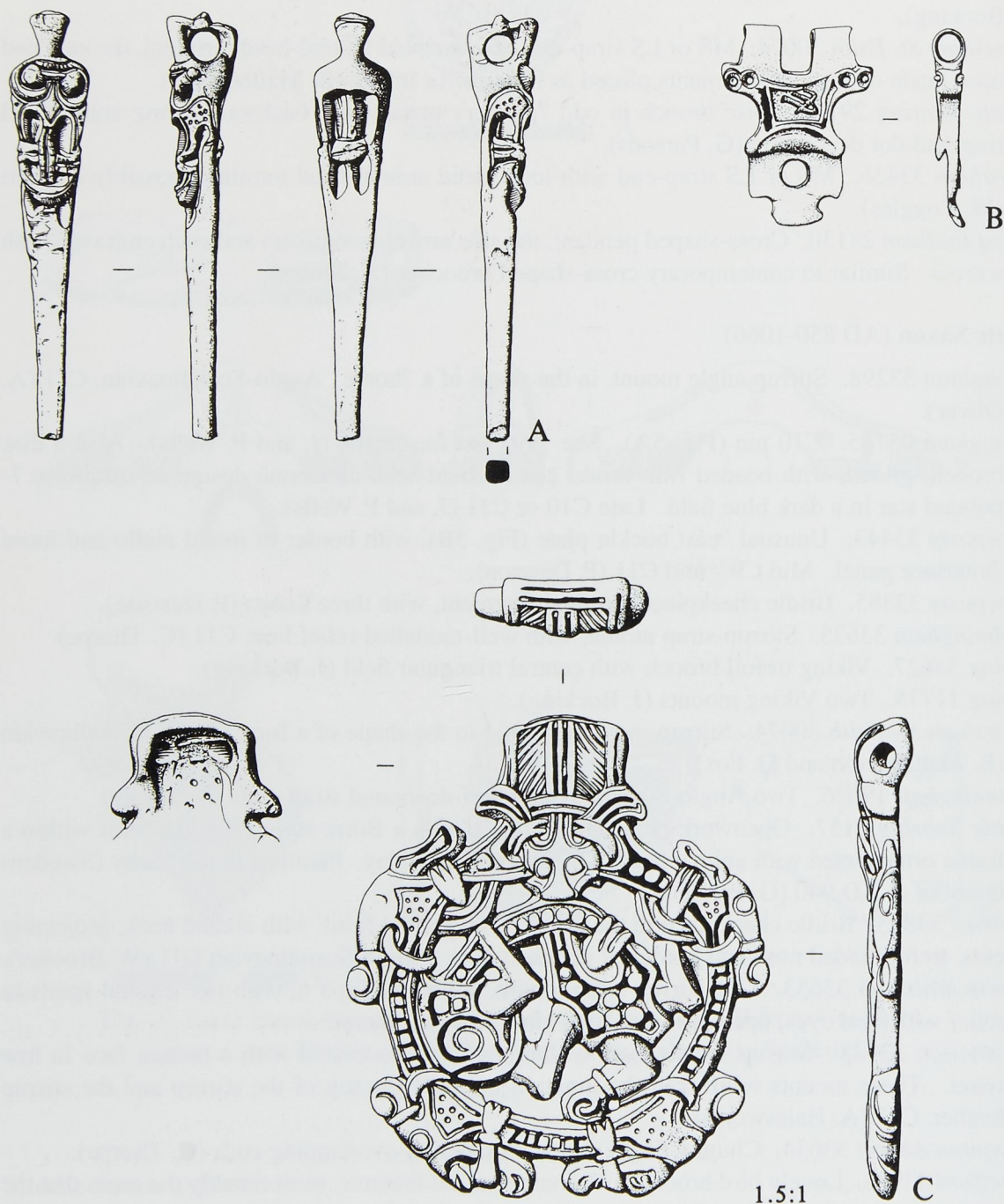


Fig. 5. Late Saxon pin from Congham (A), buckle plate from Corpusty (B), pendant from Little Snoring (C). Scale 1:1, except for C (1.5:1)

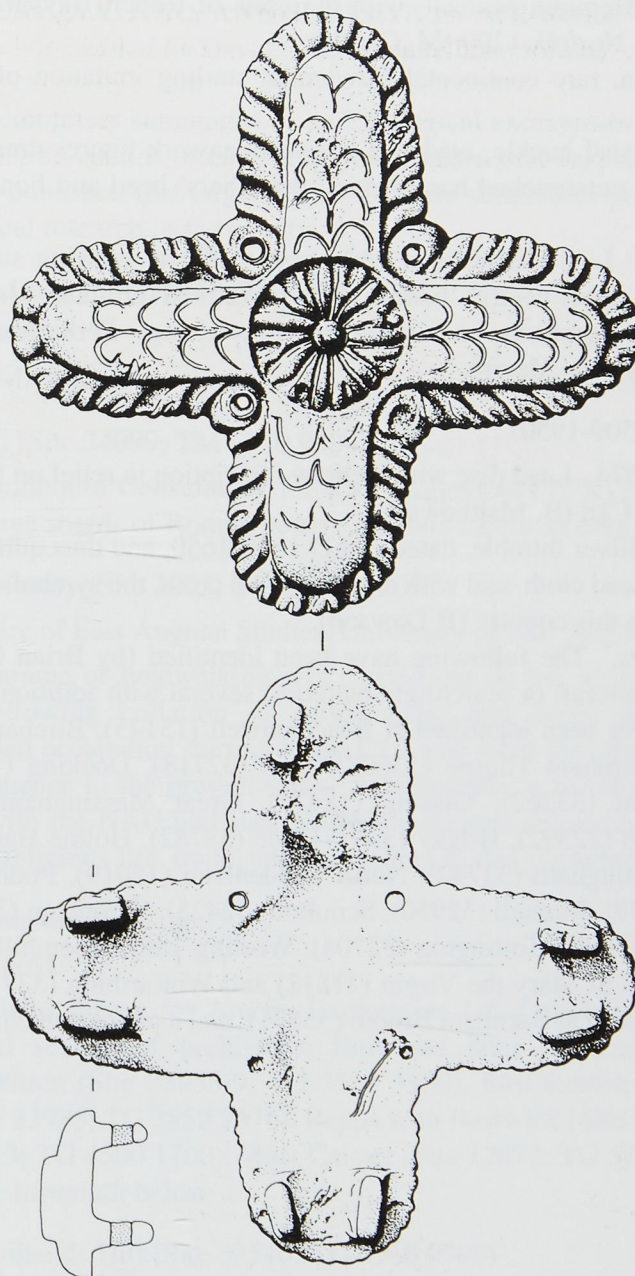


Fig. 6 Late Saxon strap-distributor from West Rudham. Scale 1:1.

Medieval (AD 1066-1500)

Broome/Ellingham 33400. Lead seal matrix + S'ALANI CHVNPEN ('Seal of Alan Chunpen?'). Also shield-shaped harness or strap stud with arms of the de Bohun family, Earls of Hertford and Essex (B. Davidson).

Cantley 10363. Fragments of two limestone (?Barnack) coffins found in trenching N of the E end of the nave of St. Margaret's church. Late C12 or early C13 (A. Rogerson).

Corpusty 33442. Lead alloy heart-shaped open frame brooch, perhaps a pilgrim souvenir. C13 - C15 (P. Dawson).

Corpusty 31877. Cast animal head, from the handle of a late medieval or early post-medieval chafing dish (P. Dawson).

East Walton 33610. Heraldic pendant, with the arms of Robert Baynard of Great Hautbois, Knight of the Shire, Norfolk 1290 (M. Carlile).

Marsham 9873. Coin, rare continental Edwardian sterling imitation of AD 1279-1377 (E. Middleton).

Thetford 25763. Unusual buckle, made up of two openwork figures dressed in short flowing robes, each with an outstretched hand behind the others' head and lion/dog at their feet (B. Fisher).

West Rudham 28131. Late medieval or early post-medieval hanging suspension device. A trefoil plate with an upper central 'handle' with perforated terminal. Underneath one central and three terminal projections, each with a perforated lug. Perhaps ecclesiastical, for the chains from a censer? (A. Mears).

Post-medieval (AD 1500-1950)

Horsham St. Faith 30074. Lead disc with Hebrew inscription in relief on both sides, possibly a kosher seal, C17 or C18 (B. Matthewson).

Kenninghall 33934. Silver thimble, dated c. AD 1600-1650, and thus quite rare (J. Bassam).

Whissonsett 31879. Lead cloth-seal with double-armed cross, the symbol of Ypres, and the first example recorded in this country (P. Dawson).

World War 2 Defences. The following have been identified (by Brian Cushion) from aerial photographs. Anti-aircraft or searchlight batteries, several with additional gun emplacements and/or buildings have been identified at Beachamwell (15145), Bircham (33735), Burnham Market (33697), Burnham Thorpe (33698), Diss (32718), Docking (13551), East Walton (30997), Gillingham (33262), Gissing (18475), Great Massingham (30801), Grimston (21713), Hilborough (32392), Hilgay (33377), Hoe (33782), Holme Hale (19457), Langham (33693), Little Walsingham (33742), North Tuddenham (15019), Pudding Norton (11747), Raveningham (17499), Runhall (32930), Scoulton (32425), Shropham (32925), South Creake (33743), Stiffkey (33696), Tottington (32704), Weeting with Broomhill (33702), West Acre (33720), Wiggshall St Mary the Virgin (21812) and Winfarthing (32711). A probable gun battery has been located at Barnham Broom (33831), and a major gun emplacement at Kelling (33638).