

## ACKNOWLEDGEMENTS

The authors are indebted to Steven Brown for his prompt reporting of the find, and to John Cherry for his assistance.

Cheetham, F., 1984, *English Medieval Alabasters* (Oxford)

Duffy, E., 1992, *The Stripping of the Altars, Traditional Religion in England c.1400–c.1580* (New Haven and London)

Margeson, S., 1989, 'A medieval musician from near Thetford', *Norfolk Archaeol.* 40, 325–6.

Stratford, N. with Blair, C., 1987 'A Gothic 'ivory' knight in the British Museum', *Antiq. J.* 57, 378–80.

## MEDIEVAL SEAL MATRICES FROM NORFOLK, 1999

by Helen Geake, Andrew Rogerson and Steven Ashley

This paper is the second in an annual catalogue of the medieval seal matrices which are reported to Norfolk Museum Service's Identification and Recording Service. Seal matrices — especially those with inscriptions — are tiny documents which give important evidence for the development of surnames, personal property, literacy, heraldry, and social hierarchy in the medieval period. The matrices catalogued all have impressions which are available for study. This year's catalogue, exceptionally, includes one pre-Conquest example (no. 8) which will be fully published elsewhere.

The catalogue is divided into sections headed thus: official secular (although there is none in this category this year); official religious; personal seals with arms; personal seals with names; personal seals with mottoes; with initials only; without inscription; illegible. As far as possible entries are in alphabetical order.

The organisation of the catalogue entries is as follows. Material, overall shape of matrix. Shape of die, and size. Central motif. Surrounding inscription (and translation). Parish name and SMR number. Any reference or supporting information.

The inscriptions have been rendered as faithfully as possible, with illegible letters thus: ..... Inferred letters have been put in square brackets. Some spaces have been added to make the reading clearer. There is no full stop added after the inscription to avoid confusion with any dot contained within the inscription itself.

## Official secular seals

No seal matrices in this category were reported during 1999.

## Official religious seals

1. Copper alloy, flat with pierced lug at one end on reverse; rest of reverse decorated with irregular rows of dots. Pointed oval, lower corner broken off but originally c. 47 x 29 mm. Virgin and Child, both nimbed, with kneeling monk below triple arch beneath and church above displacing legend to one side. S'ALANI· PRIORIS· DELIDEL· (Seal of Alan, Prior of Liddell). Alderford 19643. Which prior this seal matrix belonged to is in doubt. There is no known priory called Liddell or Liddle; but there is a priory at Haltemprice in East Yorkshire founded by Thomas Wake, Lord 'de Lidel', and its seal is Tonnochy 841. Fig. 1.

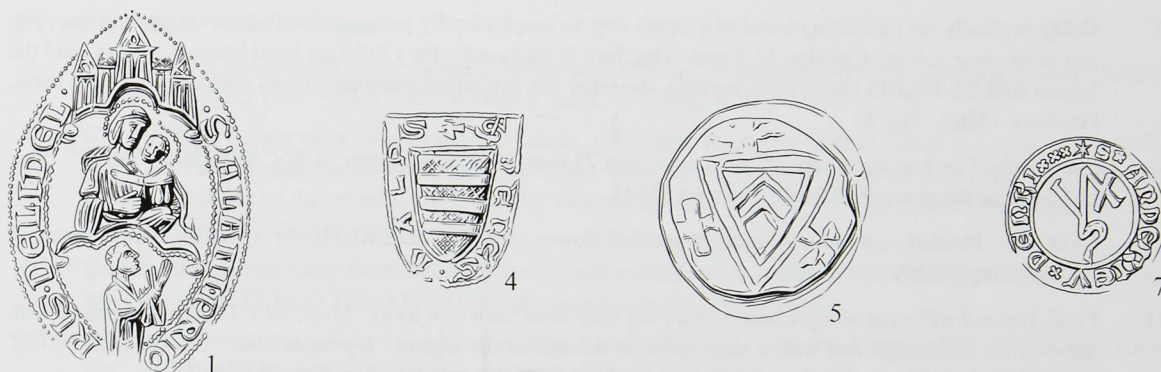


Fig. 1 Impressions taken from seal matrices. 1: Alderford. 4: Hevingham. 5: West Acre. 7: Burnham Market. Scale 1:1

2. Copper alloy, hexagonally faceted conical handle with pierced trefoil terminal. Circular, 22 mm. Tonsured figure with gridiron in left hand, star and moon either side of the head, cross-hatching to right of the figure. \* SAVNTA LAVRAVNCIE with a line curving between dots filling up the rest of the space. Quidenham 31329.
3. Silver, flat with pieced lug on reverse at base of a three-armed rib. Pointed oval, 32 x 21 mm. Virgin suckling nimbed Child above architectural frame; below central arch, the upper half of a suppliant figure. Legend begins with a fleur-de-lis. PORTA SALVTIS: AVE : + : ME: PROHIBENS AVE (Gate of Salvation, Hail; Defending Me, Hail). Shotesham 29901. Similar to Tonnochy 919.

### Personal seals with arms

4. Copper alloy, flat with pierced lug on reverse at top. Shield-shaped, 21 x 16 mm. Shield bearing *three bars*. + \$ DENES · DALPS (Seal of Denis Dalps). Hevingham 7656. Fig. 1.
5. Lead, slightly domed with broken central lug on reverse. Circular, 26 mm. Large raised rim (groove on impression) around shield bearing *a chevron within a bordure* (alternatively, *two chevrons within a tressure*), between three crosses. West Acre 33660. Fig. 1.

### Personal seals with names

6. Lead, flat; on reverse a double border ridge around an 8-point relief star and an unpierced lug at one end. Pointed oval, 33 x 21 mm. Small 5-point star with dot above and below. + S' ADE PO' B' DE ELW (Seal of Adam Pobjoy?) of Elm (in Cambridgeshire) or Elmham). East Rudham 34265.
7. Copper alloy, hexagonally faceted conical handle with large moulded collar and pierced trefoil knob. On one facet there is an engraved mark consisting of a long line with four shorter lines crossing it at right angles (like a tally mark) – this marks the top of the design. Circular, 20 mm. Merchant's mark. \* S x AnDERIEV x DENRI x x x (Seal of Andrew Denry). Burnham Market 32087. Fig. 1.

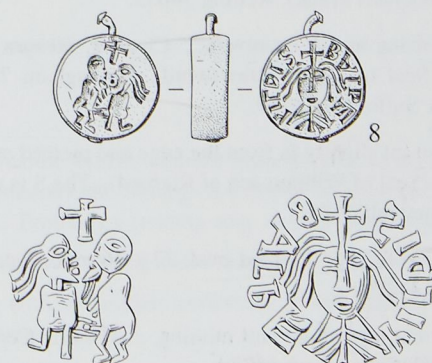


Fig. 2 8: Postwick. Matrices from pre-Conquest gold signet ring & impressions therefrom. Scales 1:1 and 2:1

8. Gold, originally the swivelling bezel of a signet ring so longitudinally perforated with a surviving axis bar. The rest of the ring is lost. Circular, 11.5 mm. One face is engraved with a full-face head beneath a cross, and the legend BALDE hILDIS (the S is retrograde); the other has two naked standing figures with a cross above them. Postwick 13603. Fig. 2.
9. Lead, stub of broken lug at top. Pointed oval, 36 x 23 mm. 4-petalled flower. + S' CATHERINE F' ROB' (Seal of Catherine daughter of Robert). Tharston 34245.
10. Lead, flat. Pointed oval, 44 x 29 mm. 8-petalled flower. + S'ERS· DE RETHVM (Seal of ? of Wretham). Field Dalling 28580.
11. Lead, flat and with scar at top where a small lug may have been torn away. Oval, 29 x 27 mm. Engraved with the oval set widthways and with a large space at the end of the legend. 6-pointed star. \* S;· GODER ELIOT (Seal of Goderic Eliot). Purchased at Fakenham Market; apparently found in Norfolk. 34171.
12. Lead, flat with raised rib ending in unpierced lug. Pointed oval, 35 x 24 mm. Inverted fleur-de-lis. + SIGILL + hELV: DE (Seal of ?Helewis.....). The legend is engraved the right way round, so that the impressions are in mirror-writing. Bintree 34840.
13. Copper alloy, flat with pierced lug on reverse. Pointed oval, 26 x 17 mm. Agnus Dei (lamb and flag). \* S' hERVEI GODEVIN (Seal of Harvey Godwin). Diss 34383.
14. Lead, flat with long flat unpierced lug on reverse which has now flopped over. Circular, 26 mm. Upside-down fleur-de-lis. + S' IOhANNIS ... .. NEIT (Seal of John.....). Purchased at Fakenham Market; apparently found in Norfolk. 34171.
15. Lead, flat with pierced lug at top. Circular, 24 mm. Cross with dot in each angle. + S' IOhIS FIL IOhANNIS (Seal of John son of John) Fincham 34896.
16. Lead, flat with scar of lug at top. Fragment only, but originally circular. 6- or 8-point star. + S' LV.... .... E (Seal of ?Luke....). The legend ends with a space-filling saltire with dots in the angles. Acle 34626.
17. Lead, flat, no surviving lug. Circular, slightly irregular, 22-25 mm. Ear of corn. : S' NICHOL' MANC' (Seal of Nicholas Mancer). Brockdish 34856.
18. Copper alloy, hexagonally faceted conical handle with flat pierced terminal. Circular, 17 mm. Squirrel. Legend starts under forepaw, \*S'IL ODO DENOTI (Seal of Odo Denot). Plumstead 34907.
19. Copper alloy, hexagonally faceted conical handle with pointed pierced terminal. Circular, 21 mm. Two heads facing one another, with plant or tree in between with bird and leaf interrupting legend. S' REGINALDI BRIT (Seal of Reginald Brett). Bradenham 31039.
20. Lead, flat with unpierced lug at top. Circular, 31 mm. + S' REGINALDI F' R' (Seal of Reginald son of R...). Long Stratton 18273.
21. Lead, flat with rib on reverse. Circular, 24 mm. 8-petalled flower with dots between the petals. S' RICARDI DVRELDI (Seal of Richard Dureld). Freethorpe 34898.
22. Lead, flat with damaged edge so that any lug is missing. Circular, 31 mm. Illegible central motif. + S' RICARDI· FRANC (Seal of Richard Frank). Kelling 34655.
23. Copper alloy, flat with pierced lug at top on reverse. Circular, 20 mm. Agnus Dei (lamb and flag). + S' ROGERI · DRAhESVERD (Seal of Roger Drawsword). Hevingham 7656. Richard Dragheswerd's name appears in the Assize Rolls for Suffolk for 1240.
24. Lead, conical handle on reverse set slightly in from the edge and pierced at the top. Circular, 17 mm. Fleur-de-lis. + S'· WIL'· FIL'· RICAR (Seal of William son of Richard). The S is retrograde and the legend begins well to the right of the top. Beachamwell 2635.
25. Copper alloy, raised rib and pierced lug. Pointed oval, 27 x 16 mm. Squirrel. + : S' WILLI· BRONT:· (Seal of William ?Bront). Thurning 34275.
26. Lead, flat. Originally circular but now about half missing, c. 31 mm. Central motif illegible. + SIG .....FIL' ODE (Seal of .....son of Odo). Surlingham 35080.
27. Lead, lower half of matrix only. No lug survives. Pointed oval, c. 43 x 25 mm. ...VXORI: COLAIM... (...wife of ?Colin). Postwick 34969.

### Personal seals with mottoes

28. Copper alloy, hexagonally faceted conical handle with pierced lozengiform terminal. Circular, 18 mm. A hawk on top of another bird. \*ALAS IE SV PRIS ↓ (alas I am caught). Sall 35137.
29. Copper alloy, hexagonally faceted conical handle with collar beneath a pierced trefoil terminal. Circular, 17 mm. Man and woman facing each other, with their arms bent upwards at the elbows and holding hands, and with a ?plant above their heads. AVE MARI, with the two halves of the M separated by the woman's dress. Costessey 34875.
30. Copper alloy, hexagonally faceted conical handle with collar beneath a pierced trefoil terminal. Circular, 19 mm. A wolf's head. ELEGO TEGO FREG (Read, conceal, break). Hales 34917.
31. Copper alloy, flat; the reverse has a bevelled edge but no rib or lug. Circular, 17 mm. IHS with ligature across top. \* EST: AMOR: MEVVS (Jesus is my love). Toft Monks 33285.
32. Copper alloy, flat with pierced lug on reverse. Pointed oval, 28 x 19 mm. Bird perched on two stems of a plant. \* FRANGE LEGE TEGE: (Break, read, conceal) Newton by Castle Acre 32935.
33. Copper alloy, conical handle with pierced terminal. Circular, 17 mm. Sleeping lion. \* IE LIVN REPOSE (I live in repose). Surlingham 35080. *cf.* Tonnochy 743.
34. Copper alloy, hexagonally faceted conical handle with pierced trefoil terminal. Circular, 17 mm. Cockerel walking, with outstretched wings. \* IE SV SEL NVIT (I am a seal of the night). Quidenham 33173.
35. Copper alloy, hexagonally faceted conical handle with double collar beneath a pierced trefoil terminal. Circular, 17 mm. Two gloved clasped hands with a bird above, all upside down. \* LEL AMI AVET (You have a loyal friend) Quidenham 35174.
36. Copper alloy, hexagonally faceted conical handle with triple collar beneath a pierced trefoil terminal. Circular, 17 mm. 4-petalled flower, each petal veined like a leaf. \* LEL AMI AVET (You have a loyal friend). Ketteringham 31274.
37. Lead, flat with no lug. Reverse has central dimple and marking-out lines. Circular, 19 mm. 8-petalled flower with dots in the angles. + SIGILLVM AMCI (Seal of a friend). Shelton 34604.
38. Copper alloy, incomplete hexagonally faceted conical handle. Circular, 17 mm. Squirrel. \* VA SVA SVA (apparently meaningless). Sculthorpe 35103.
39. Copper alloy, hexagonally faceted conical handle with flattened pierced rounded terminal. Circular, 15 mm. Corroded and hard to read; central motif is an animal, either a bird with a long beak, a hair with long ears, a stag with long antlers or a squirrel with a long tail. Legend is clear; \* VEITCINERVAVI (apparently meaningless). Norfolk, no provenance 34352.

### Seals with initials only

40. Copper alloy signet ring. Subrectangular bezel 12 x 6 mm. Black-letter e within border. Attlebridge 34460.
41. Copper alloy signet ring. Circular bezel, 10 mm. I or L with branch behind, all within border. Caister-on-Sea 32381.
42. Copper alloy signet ring. Subrectangular bezel 12 x 10 mm. Lombardic T with zig-zag to either side. Sporle with Palgrave 1058.
43. Copper alloy signet ring, incomplete. Subrectangular bezel, 10 x 8 mm. W within border. Sall 30972.

### Seals without inscription

44. Copper alloy, flattish conical handle with incomplete triple-pierced terminal. Sub-circular, 14 mm. Cartoon-like stag facing right (on the impression); the forelegs are folded underneath and are carefully drawn; the back legs are just pairs of straight lines. Probably a running stag, or *stag trippant to the sinister*. Postwick 13603.
45. Copper alloy, conical handle with oval triple-pierced terminal. Oval, 14 x 12 mm. Crossed keys. Blakeney 33247.
46. Copper alloy, conical handle with incomplete perforated trefoil terminal. Oval, 13 x 11 mm. Flaming heart transfixd by two arrows. Emneth 34259.
47. Copper alloy, hexagonally faceted conical handle with broken pierced terminal. Circular, 14 mm. Squirrel in a square frame from which tufts of ?grass grow out. Ormesby St Margaret 18914.
48. Copper alloy signet ring. Oval, 11 x 9 mm. *A dolphin embowed*. Loddon 33401.

**Illegible seals**

49. Lead, flat. Cut quarter only, but originally circular, c. 42 mm. The central motif was probably a series of radiating lines ending in dots (intended to represent nails?). The surviving fragment of legend reads RO. IS and is engraved the right way round, so that the impression would be in mirror-writing. Alderford 19643.
50. Lead, flat. Cut quarter only, but originally circular, c. 32 mm. The central motif may have been an 8-point star, and the surviving part of the legend reads SIGIL (Seal of...). Beeston 4084).
51. Lead, flat with unpierced lug at top. Oval with rounded ends, 38 x 30 mm. Fleur-de-lis cut upside down. The legend has a cross at the top, but the rest of the inscription has not been cut; probably an unfinished matrix. Reverse has SIG lightly scratched into it. Thurning 34365.
52. Lead, flat with pierced lug on reverse. Pointed oval, 44 x 21 mm. Fleur-de-lis. Legend completely illegible. Happisburgh 34331.
53. Lead, flat. Cut ?quarter only, but perhaps originally pointed oval, c. 38 x 22 mm. Legend poorly cut, ...CP... Fring 1659.
54. Lead, flat. Cut fragment, less than a quarter. Possibly originally circular, at least 30 mm. Legend neatly cut, .../IC... Fring 1659.
55. Copper alloy, flat with raised rib ending in broken pierced lug. Circular, 25 mm. 5-petalled flower with oblique ribbing on petals. Legend illegible. Mautby 34672.
56. Lead, flat. Half only, deliberately cut, now crumpled. Circular, 30 mm. Central motif illegible. . . . . .A HESSIW..... Sporle 28569.

**BIBLIOGRAPHY**

Tonnochy, A.B., 1952. *Catalogue of British Seal-Dies in the British Museum* (London)

**SEDFORD HISTORICAL AND ARCHAEOLOGICAL RESEARCH PROJECT,  
1999: FOURTH INTERIM REPORT**

*by* Melanie van Twest

*with contributions from* Andrea Cox, Neil Faulkner, Janet Hammond *and* Richard Hoggett

The Sedgeford Historical and Archaeological Research Project continues to develop its activities with the intention of building comprehensive knowledge of all periods of settlement and land-use within the parish. Current research close to the modern village seems to show Iron Age and middle-late Saxon occupation south of the river, with Roman and post-Conquest medieval settlement to the north, but further investigation will no doubt reveal a more complex pattern.

Although SHARP is a volunteer project whose main activity is a six-week summer season, post-excavation work is continuing, and the results of the first four years of excavation are due to be published in 2001. This report will cover evidence recorded in 1958 and in 1996–99, and will include a full discussion of changing methodologies together with provisional interpretations and conclusions. We hope to follow up with further reports at approximately four-year intervals, each drawing upon earlier work in developing interpretation and understanding of the site. In addition, a full edited site archive is planned for publication in CD-ROM format.