

ACKNOWLEDGEMENTS

In addition to the SHARP committee of trustees, supervisory team, volunteer fieldworkers, members of the friends organisation, various specialist consultants, supporting academic bodies, and many local residents and small businesspeople who have sponsored the project, our particular thanks are due to: Bernard and Susan Campbell, Andrew and Katherine Ramsey, Janet Hammond and Tim Snelling, Mr & Mrs Buscall, the vicar and parishioners of the Church of St Mary the Virgin, the people of Sedgford, and King's Lynn and West Norfolk Borough Council. Figure 1 is by Ray Ludford.

ARCHAEOLOGICAL FINDS IN NORFOLK 1999

edited by David Gurney

This is a selection of important finds from an estimated total of more than 13,000 objects seen by the Norfolk Museums Service's Identification and Recording Service, and details of which have been entered on the Norfolk Sites and Monuments Record during 1999. The Norfolk SMR is maintained by the Norfolk Museums Service's Landscape Archaeology Section at Gressenhall, and may be consulted by appointment.

The entries are arranged by period and, within each period, by parish alphabetically. The number after the parish name is the Norfolk SMR number. Grid references have been omitted at the request of finders. Metal artefacts are of copper alloy (bronze) and Iron Age, Saxon and medieval coins are of silver unless otherwise stated. Seal matrices are dealt with elsewhere (this volume).

Norfolk Landscape Archaeology is most grateful to all those who bring in finds for identification and recording, thereby contributing to the SMR and this annual list. The Identification and Recording Service, staffed by Helen Geake, Katie Hinds, Samantha Hyde and Andrew Rogerson, was based temporarily at Gressenhall during 1999–2000. The assistance of colleagues in the Archaeology Department at the Castle Museum (John Davies, Bill Milligan, Kate Sussams, Alan West), Steven Ashley (Norfolk Archaeological Unit), Peter Robins (flint identifications) and colleagues in other institutions, especially the British Museum, the Fitzwilliam Museum and the Ashmolean Museum in the identification of finds is most gratefully acknowledged.

The majority of the finds listed have been found in the course of metal-detector survey (with many finds being reported by members of Anglian Historical Searchers, Anglian Metal Detectors, East Norfolk Metal Detectors, Norwich Metal Detectors and the West Norfolk Search and Recovery Group), but the list may also include fieldwalking finds and new discoveries of sites either by field observation or aerial photographic survey. The illustrations are by Sue White (Norfolk Archaeological Unit).

Undated Prehistoric

Gressenhall 34145. Profuse potboilers on low mound in pasture (A. Rogerson)

Mesolithic (10,000–4000 BC)

Burnham Norton 34280. Meso or Early Neo flint blade (D. Fox)

North Walsham 34681. Flaked flint axe (M. Watts)

Postwick 30401. Tranchet axe (K. Canham)

Sedgeford 1605. Microliths and blades (N. Faulkner)

Thetford 5804. Microlith (P. Brooker)

Neolithic (4000–2000 BC)

Attleborough 34629. Stone axe (J. Kennedy)

Brinton 34251. Neolithic or EBA plano-convex knife (T. Linford)

Carleton Rode 34385. Laurel leaf (A. Garner)

Runcton Holme 34454. Polished flint axe (C. Wroth)

Sedgeford 1605. Leaf and chisel arrowhead, and a barbed and tanged arrowhead (N. Faulkner)

Shipdham 34362. Large flint dagger blade fragment, possibly kite-shaped, Neo, BA or Beaker (D. Sheldrake)

Shotesham 5393. Flaked flint axe (J. Albert)

Spixworth 24415. Unusual ?oblique arrowhead with heavily-abraded edges — perhaps used as something other than a projectile point. Neo or EBA (P. Thrower)

Sporle with Palgrave 34519. Flaked flint axe (S. and M. Slaven)

Bronze Age (2000–650 BC)

Ashill 34627. LBA sword tip (R. Barber)

Attlebridge 34631. MBA spearhead fragment (M. Embrey)

Brampton 34609. LBA socketed axe fragment (N. Paul)

Fornsett 31418. LBA socketed axe fragment (K. Wright)

Fulmodestone 3214. MBA palstave (A. McKenna)

Happisburgh 34331. LBA axe (T. English)

Hardingham 15595. Possible LBA ?suspension ring, neatly made with central groove around the outside of the D-shaped section. Made in SE England or N. France, 900–800 BC (D. Wade)

Horning 8446. Almost complete LBA axe from hoard (W. Brinded)

Horsham St. Faith and Newton St. Faith 34607. LBA socketed axe fragment (J. Kedge)

Kenninghall 32862. Socketed axe (R. Stacey)

Lynford 34666. Flint knife or dagger set into a (?modern) antler haft (A. Evans)

North Wootton 34683. Rapier tip (P. Burke)

Shouldham 34390. Tool blade fragment (C. Merchant)

Sporle with Palgrave 34520. ?Awl (M. Slaven)

Stow Bedon 28512. Sword haft/blade fragment. (M. Chapman/P. Howe)

Wicklewood 33334. Butt end fragment of EBA flat axe (W. Brooker)

Iron Age (650 BC–AD 43)

Aylsham 34396. Coin, Trinovantian cast bronze, Thurrock type (A. Kedge)

Bintree 34150. Pottery sherds (P. West)

Colkirk 34298. Pottery scatter (A. Rogerson)

Costessey 34170. One-piece Colchester brooch (C. Hawes)

Kenninghall 32862. Late IA miniature terret, unusual style with flat faces, milled rim and dotted decoration (R. Stacey)

Letheringsett with Glandford 34177. LBA/IA flints and IA pottery (E. Savery)

West Acre 33660. IA ?bridle bit. A cylindrical loop, now split, with transverse mouldings and a fine groove at each end (M. Carlile)

Roman (AD 43–410)

Carleton Rode 34589. Coins, brooches, enamelled seal box lid, patera roundel and votive stand.

The last a hollow cube without legs, the sides all decorated with a sunken rectangular cell divided into four by a reserved saltire and enamelled. Circular hole in the top (A. Womack)

Castle Rising 34618. Seven pottery sherds, found within the medieval town (K. Elfleet).

Hanworth 30853. Die stamp. Cast-bronze die, used to manufacture repoussé plates which were applied to Roman disc brooches. These have a triskele (three-part) design within a ribbed border. Previously it was thought that these plates were individually produced freehand, but this die allows mass production (Fig. 1) (N. Paul).

Hockwold-cum-Wilton 5316. Large cosmetic mortar, centre loop, moulded terminals and groove of tiny punched triangles around the rim (Deacon)

Marham 34529. Pottery scatter, coarse Nar Valley type fabrics (M. Coggles)

Mileham 34349. Pottery scatter in dykeside (M. Butler-Stoney)

North Walsham 34682. Dog figurine, very worn with no detail extant (B. Woodrow)

Poringland 34477. Gold finger ring with *aureus* of Postumus set into bezel. Second half of C3.

Gold coin-set jewellery is rarely found in Britain, so this is an important find (P. Dawson)

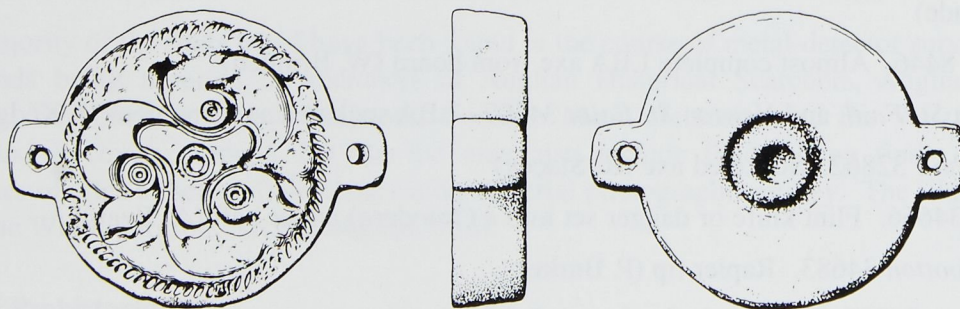


Fig. 1 Roman die from Hanworth. Scale 1:1

Riddlesworth 29013. Knife handle in the form of Hercules wrestling with Antaeus on a pedestal. Similar in style to one of the Hoxne Treasure pepperpots (D. Wade)

Sporle with Palgrave 34520. ?Nail cleaner decorated with ring-and-dot, and silver finger ring, its setting missing (M. Slaven)

Wramplingham 34457. Leaf-shaped seal box, enamelled, intact and in stunning condition (R. Purdy)

Early Saxon (AD 410–650)

Aylsham 11661. Probable cruciform brooch fragment from crop-mark site (A. Kedge)

Forncett 31418. Lead knob from a cruciform brooch, decorated with a human mask. Probably part of a lead model. First half C6 (K. Wright)

Hanworth 34463. Worn cruciform brooch (N. Paul)

Hingham 2982. Gusset plate made from gilded bronze, with the headframe and eye of a bird at the lower corners, and a central Style I animal. Mid C6, and one of the classic 'Anglian' object types of the period (P. Thrower)

Kenninghall 34595. Foot fragment from a great square-headed brooch, gilded, C6 (R. Stacey)

Newton Flotman 34676. C5 small cruciform brooch, with an unusual long transverse-ribbed projection as a major decorative feature down the central panel of the headplate (G. Linton)

Ormesby St. Margaret with Scratby 34685. Early C7 drinking horn terminal. Cast bronze, and in the shape of a very stylised bird's head (K. Fenny)

Ringland 34371. Cruciform brooch knob, decorated with a ?human face, C6 (R. Budds)

Tacolneston 33431. Bucket binding strip fragment (K. Wright)

Thompson 34532. Unusual hybrid equal armed cruciform brooch (Fig.2) (A. Beal)

Tivetshall St. Mary 34501. Cruciform brooch, found near the site of the Roman villa (Stannard)

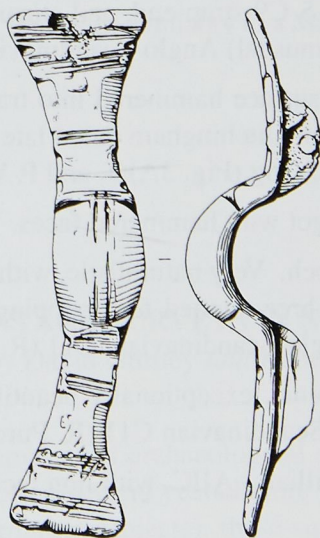


Fig. 2 Early Saxon brooch from Thompson. Scale 1:1

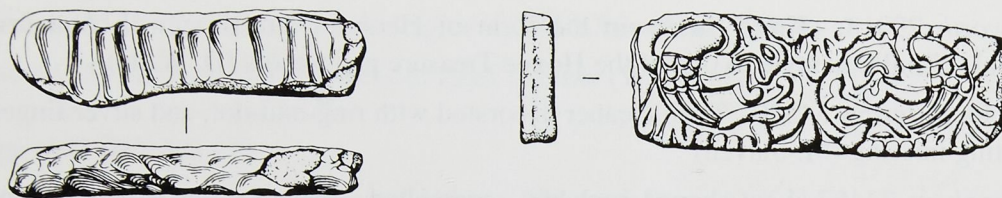


Fig. 3 Late Saxon ingot from Congham (A) and die from Sporle with Palgrave (B).
Scale 1:1

Middle Saxon (AD 650–850)

Beachamwell 4530. Circular gold sheet with a grooved projection and punch-marks or crimping opposite. Perhaps the backplate from a cabochon pendant or (less likely) a bulla pendant. Second half C7 (M. Carlile)

Brinton 34251. Two sherds of Ipswich Ware (T. Linford)

Keswick 31652. Probable MS disc with central hole and loose spherical-headed stud, around which is a deeply-drilled runic inscription TLIMHUMG (H and G may be S and N) (I. Taylor)

Old Hunstanton 34617. Sceat, Series E, c. 710–30 (J. Bocking)

Quidenham 34602. Sceat, Series E, porcupine obverse, BMC type 4, 710–30 (J. Worton)

Quidenham 34333. Brooch pin, complete, the shaft flattened and curved over to form the loop. Transverse grooves on the shaft, with panels decorated with lines of punched dots. Irish, C8 or C9 (E. Crick)

Thurning 34364. Complete pin, the head a cube with the corners cut off, an engraved cross on the top and engraved decoration on the lozengiform sides. C8 or C9 (P. Dawson)

West Rudham 32133. Gilt bronze fragment, probably the head of a pin, with very high quality Witham pin-style chip-carved ornament of most of an animal. C8 (A. Mears)

Winterton 34397. Ipswich Ware sherd found embedded in boulder clay exposure.

Late Saxon (AD 850–1066)

Beachamwell 4530. Cut farthing of Edward the Confessor, 1050–53 (M. Carlile)

Burnham Market 32087. MS or LS C9 strap end, and stirrup strap mount, Williams A1, with cast relief decoration (which is unusual) Anglo-Scandinavian, C11 (G. Parsons)

Congham 3565. Ingot, the upper surface hammered into transverse flutes and each edge to a facet. Similar to an example from Ditchingham dated late C9 or early C10. Weight 13.51g, half Viking standard weight of 25/26g (Fig. 3A)(J. and P. Wells)

Costessey 34170. Probable bar ingot with hammered faces. Weight 10.99g (C. Hawes)

Kenninghall 32862. Cockerel brooch. Very naturalistic, with bird facing right, a drooping beak and triple comb on the head. Three-taloned feet gripping a bar. The whole of the bird is decorated with fine ribbing. Anglo-Scandinavian, C11 (R. Stacey)

Little Melton 19771. Stirrup terminal, exceptionally beautiful and in the shape of an animal head in Ringerike style. Anglo-Scandinavian C11 (R. Purdy)

Mautby 34672. Stirrup mount. Williams AIIC, with lion facing left. Anglo-Scandinavian C11 (E. Bagguley)

Sporle with Palgrave 32939. Die or patrix (mould) for making pattern on foil, C10, early Winchester style (Fig.3B)(M. Slaven)

Medieval (AD 1066–1500)

Alderford 33640. Very unusual early medieval mount, in the shape of a human head and shoulders. Crude Romanesque-like modelling, perhaps C12 (J. Riches)

Beachamwell 34616. Burial cross, with each side arm ending in an onion-shaped knob. Used to pin the shroud together (A. Oliver)

Hanworth 30853. Pottery sherd scatter, brick, tile, coins and metalwork, suggestive of a settlement site (N. Paul)

Lyng 34667. Large C14 signet ring with engraved bezel, M beneath a crown (P. and S. Buckley)

Mautby 34671. New type of French jetton. Obv. stylised ?owl AVE MARIA GRACIA C, rev. triple stranded cross fleurets with quatrefoil, 'M' within each cusp (G. Featherstone)

North Lopham 31177. Part of a binding mount with a shell-shaped terminal from an archer's bow (P. Leeder)

Shipdham 34360. Lead pilgrim badge showing St. Barbara with feather and tower (W. Dodgson)

Tacolneston 34621. Well-preserved lead pencil with neatly-sharpened point and pierced flattened end (K. Wright)

Wormegay 23633. Very elaborate horse harness pendant. A square boss, from each corner of which is a projecting arm ending in a flat square terminal and decorated with a gilt cross on a red enamelled field. Crimped into the top of the boss is a flat square with projecting arms with animal-head terminals. The central square has a red enamelled roundel and a gilt central boss. Probably late C12 (J. Coggles)

Post-Medieval (AD 1500 – 1950)

Kenninghall 34596. Rare silver thimble made from hammered sheet, of c.1600–1650 (J. Bassam)

North Lopham 31177. Belt or harness mount in the shape of an openwork floriate cross. Spikes on the reverse indicate an early PM date, despite its similarity to a Middle Saxon cross brooch (P. Leeder)

EXCAVATIONS AND SURVEYS IN NORFOLK 1999

edited by David Gurney and Kenneth Penn

This annual report comprises summaries of archaeological excavations, fieldwork and surveys carried out during 1999. As it is often several years before post-excavation work is completed and a full report is published (for larger projects), these summaries provide a useful guide to current archaeological research in the county.