

REFERENCES AND BIBLIOGRAPHY

- Almeida do Amaral: C.M. Almeida do Amaral, *Catálogo descritivo das moedas Portuguesas. Museu Numismático Português*, Vol. I (Lisbon, 1977)
- AMNG, I. 1: F. Imhoof-Blumer (ed.), *Die antiken Münzen Nord-griechenlands. Die antiken Münzen von Dacien und Moesien*, Vol. I, 1 (Berlin, 1898)
- Bedoukian: P.Z. Bedoukian, *Coinage of Cilician Armenia* (Danbury, Connecticut, 1979)
- BMC: H. Mattingly, *Coins of the Roman Empire in the British Museum*, Vol. II (London, 1930); Vol. III (London, 1936); Vol. IV (London, 1940); Vol. V (London, 1950)
- BMC Gaul: D. Allen, *Catalogue of Celtic Coins in the British Museum. Bronze Coins of Gaul*, Vol. III (London, 1995)
- BMCIA: R. Hobbs, *British Iron Age Coins in the British Museum* (London, 1996)
- Bruuns: L.E. Bruuns, *Mønt=og Medaillesamling* (Copenhagen, 1928)
- Burns: E. Burns, *The Coinage of Scotland*, Vol. I (Edinburgh, 1887)
- Calicó et alii: F. Calicó, X. Calicó, J. Trigo, *Las Monedas Espanolas desde Fernando e Isabel a Juan Carlos I. Anos: 1474 a 1998* (Barcelona, 1998)
- CNI: *Corpus Nummorum Italicorum*, Vol. VII, 1 (Roma, 1915)
- Crawford: M.H. Crawford, *Roman Republican Coinage*, 2 vols (Cambridge, 1974)
- Elias: E.R. Duncan Elias, *The Anglo-Gallic Coins* (Paris-London, 1984)
- Galster: G. Galster, *Unionstidens Udmøntninger* (Copenhagen, 1972)
- Huszár: L. Huszár, *Münzkatalog Ungarn von 1000 bis Heute* (Budapest-Munich, 1979)
- Lafaurie: J. Lafaurie, *Les monnaies des rois de France. Hugues Capet à Louis XII* (Paris-Bâle, 1951)
- Mayhew: N.J. Mayhew, *Sterling Imitations of Edwardian Type* (London, 1983)
- Poey d'Avant: F. Poey d'Avant, *Monnaies féodales de France*, Vol. I (Graz, 1961)
- Pohl: A. Pohl, *Münzzeichen und Meisterzeichen auf Ungarischen Münzen des Mittelalters 1300-1540* (Budapest, 1982)
- SCBI: J. D. Bateson, N. J. Mayhew, *Sylloge of Coins of the British Isles. Scottish Coins in the Ashmolean Museum, Oxford and the Hunterian Museum*, Vol. 35 (London, 1987)
- Scheers: S. Scheers, *Traité de numismatique celtique II. La Gaule Belgique* (Paris, 1977)
- Van Gelder and Hoc: H. Enno van Gelder, M. Hoc, *Les monnaies des Pays-Bas bourguignons et espagnols 1434-1713* (Amsterdam, 1960)

ARCHAEOLOGICAL FINDS IN NORFOLK, 2001

edited by David Gurney

This is a selection of important finds from an estimated total of around 17,500 objects seen by the Norfolk Museums and Archaeology Service's Identification and Recording Service, and details of which have been entered on to the Norfolk Sites and Monuments Record during 2001. The Norfolk SMR is maintained by Norfolk Landscape Archaeology at Gressenhall and may be consulted by appointment.

The Identification and Recording Service was staffed during 2001 by Andrew Rogerson, Steven Ashley, Katie Hinds (partly funded by the Department of Culture, Media and Sport's Portable Antiquities Scheme), Adi Popescu (Department of Culture, Media and Sport's Portable Antiquities Scheme Finds Liaison Officer), Tim Pestell, Mark Hoyle and David Dobson

(illustrators) and Dave Wicks (photographer). The I&RS is most grateful to Anne Holness and Sue White (volunteer illustrators), and Natasha Hutcheson (for reports on Iron Age finds).

The entries are arranged by period and, within each period, by parish alphabetically. The number after the parish name is the Norfolk SMR number. Grid references have been omitted at the request of finders. Metal artefacts are of copper alloy (bronze) and Iron Age, Saxon and medieval coins are of silver unless otherwise stated. Bold text indicates that an object is illustrated.

Norfolk finds are being added to the Department of Culture, Media and Sport's Portable Antiquities website at www.finds.org.uk. Details of Middle Saxon, Late Saxon and medieval coins are submitted to the Fitzwilliam Museum's *Early Medieval Corpus, Single Finds of Coins in the British Isles, 410–1180*, which can be consulted online at www.fitzmuseum.cam.ac.uk/coins/emc.html. A selection of numismatic finds and seal matrices are dealt with elsewhere in this volume (Popescu, 137–49; Rogerson and Ashley, 133–37).

The assistance of colleagues in the Archaeology Department at Norwich Castle Museum (John Davies, Alan West), Peter Robins (flint identifications) and colleagues in other institutions, especially the British Museum, the Fitzwilliam Museum, the Ashmolean Museum, the Museum of London and the Institute of Archaeology, Oxford with the identification of finds is most gratefully acknowledged.

The majority of the finds listed have been found in the course of metal-detector survey, with many finds being reported by members of Anglian Historical Searchers, Anglian Metal Detectors, East Norfolk Metal Detectors, Norwich Metal Detectors, the West Norfolk Search and Recovery Group, and finds by groups of American visitors ('Discovery Tours' finds were reported by Val Fryer), but the list also includes many fieldwalking finds and new discoveries by field observation. Norfolk Landscape Archaeology is most grateful to all those who send in reports or bring in finds for identification and recording, thereby contributing to the SMR and this annual list.

The illustrations are by Anne Holness (1C, E; 2B–D; 3A, E, G; 4A, C; 5B, C; 6E–G), Mark Hoyle (1A, B, D; 3B, F; 4B, D, E; 5A, D; 6A, B, D; 7A, C, D), David Dobson (3C; 6C; 7B) and Sue White (2A, E; 3D).

Palaeolithic (pre-10,000 BC)

Bergh Apton/Hellington 35852. Incomplete handaxe, small ficron type (J. Lester).

Castle Rising 36624. UPAL blade (J. and P. Wells).

Happisburgh 36532. LPAL handaxe (S. Ashton).

Mesolithic (10,000–4000 BC)

East Carleton 33083. Late Meso or Early Neo tranchet axe (R. Ford).

Felmingham 35324. Meso (or Neo) flaked axe (M. Harmer, M. Watts).

Felmingham 36569. Meso or early Neo blades and flakes (C. Thorpe).

Lyng 36058. Blade (T. and B. Reeve).

North Sea 36533. Mineralised bone harpoon, found off Trimmingham c.1950 (Welch).

Shouldham 36175. Blade (C. Hardy).

Neolithic (4000–2000 BC)

Burlingham 20246. Flint laurel leaf (D. Hawes).

Bylaugh 36239. Late Neo/EBA (Beaker) barbed-and-tanged flint arrowhead (D. Swan).

Colney 9332. Flint fabricator or strike-a-light (D. Alger).

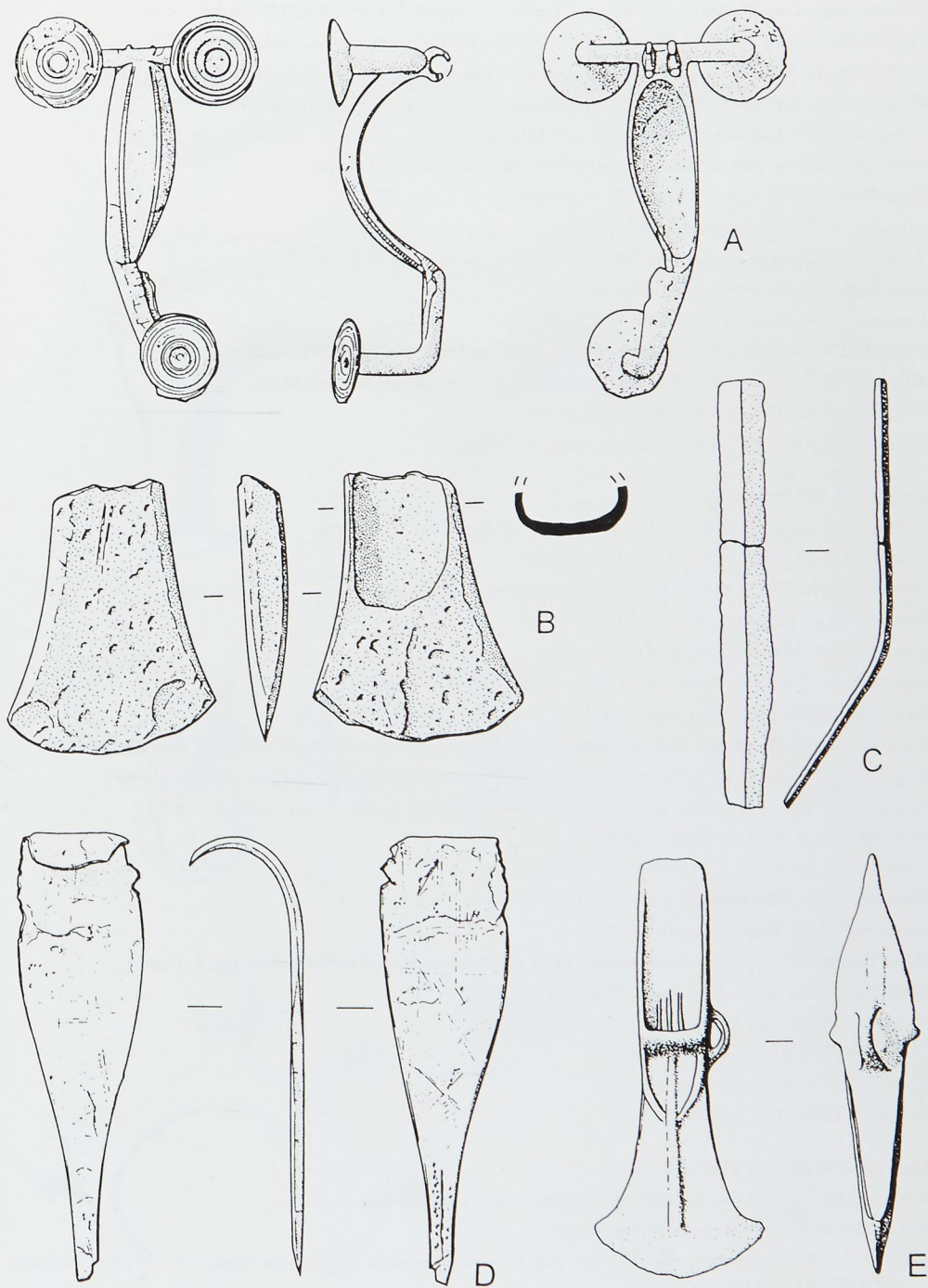


Fig. 1. Bronze Age finds. Scale 1:1, except C and E scale 1:2.

- Croxton* 18501. Late Neo/EBA (Beaker) small barbed-and-tanged flint arrowhead (T. Baxter).
Earlham 33057. Late Neo/EBA (Beaker) barbed-and-tanged flint arrowhead (A. Pollack).
Earlham 36575. Flint core fragment, with negative scars from detachment of long narrow flakes (D. Allwood).
Easton 36098. Late Neo/EBA (Beaker) flint dagger or discoidal knife (D. Marjoram).
Ellingham 35910. Late Neo polished stone axe (A. Chapman).
Felmingham 35324. Neo (or Meso) flaked flint axe/adze (H. Harmer/M. Watts).
Great Melton 36177. Flaked flint axe (D. Woollestone).
Grimston 36581. Polished flint axe (C. Thorne).
Kelling 29807. Flint projectile point (Welch).
Long Stratton 16111. Stone axe (C. Barney).
Longham 36150. Polished flint axe (P. Hodac).
Norwich 36580. Late Neo/EBA (Beaker) barbed-and-tanged flint arrowhead (Alderton).
Rackheath 36254. Late NEO/EBA (Beaker) barbed-and-tanged flint arrowhead (Wells).
Thorpe Market 35340. Polished flint axe (M. Watts).
Wood Norton 36650. Polished flint axe (S. Smith, A. Fisher).

Bronze Age (2000–650 BC)(Fig. 1)

- Alby with Thwaite* 36085. EBA barbed-and-tanged flint arrowhead (J. Barrett).
Brumstead 36626. LBA socketed axe (T. English).
Burnham Market 32087. MBA/LBA flint knife fragment (G. Parsons).
Cawston 36152. Looped palstave (B. Matthewson).
Croxton 36075. MBA dirk fragment (J. Worton).
East Rudham 35907. Hoard of fourteen LBA socketed axes (R. Battersby).
East Winch 36061. EBA/MBA axehead (P. Bell).
Fincham 30055. **LBA or EIA 'Halstatt' brooch** (Fig. 1A), hinged and possibly of 'rear finial' type (C. Sproule).
Fincham 36176. LBA hoard including spearheads, swords, annular rings, awls and pole caps (C. Sproule).
Fleggburgh 31130. Socketed axe and knife, the latter 900–800 BC; perhaps from a hoard (G. Cook).
Hockering 36541. LBA sword (A. Carter).
Long Stratton 25916. LBA tanged knife (P. Thrower).
Marsham 33240. **LBA chisel** (Fig. 1B)(A. Matthewson).
Narborough 3932. **Rapier** (Fig. 1C)(A. Ison).
North Tuddenham 35696. Spearhead, **tanged razor** (Fig. 1D) and **looped palstave** (Fig. 1E)(A. Carter).
North Tuddenham 36081. LBA founder's hoard (A. Carter).
Saxlingham Nethergate 35786. MBA palstave (T. Whiston).
Skeyton 36636. LBA flat axe (M. Watts).
Wood Norton 36169. Palstave (A. Pearson).
Wormegay 17286. Two awls (S. Brown).

Iron Age (650 BC–AD 43)(Fig. 2)

- Ashmanhaugh* 36335. **IA or Roman boar figurine** (Fig. 2A)(R. Rilings).
Feltwell 21137. La Tène III brooch (D. Woollestone).
Fring 11775. **Strap union/junction** (Fig. 2B) with three rings around a worn central ?human face in relief, probably C1 BC or C1 AD (J. Bocking).
King's Lynn/Middleton 36070. La Tène I brooch, C4/C3 BC (K. Baldero).
Lyng 35292. **IA or RB terret** (Fig. 2C)(T. and B. Reeve).
Morley 33229. **Tankard handle** (Fig. 2D)(W. Brooker).

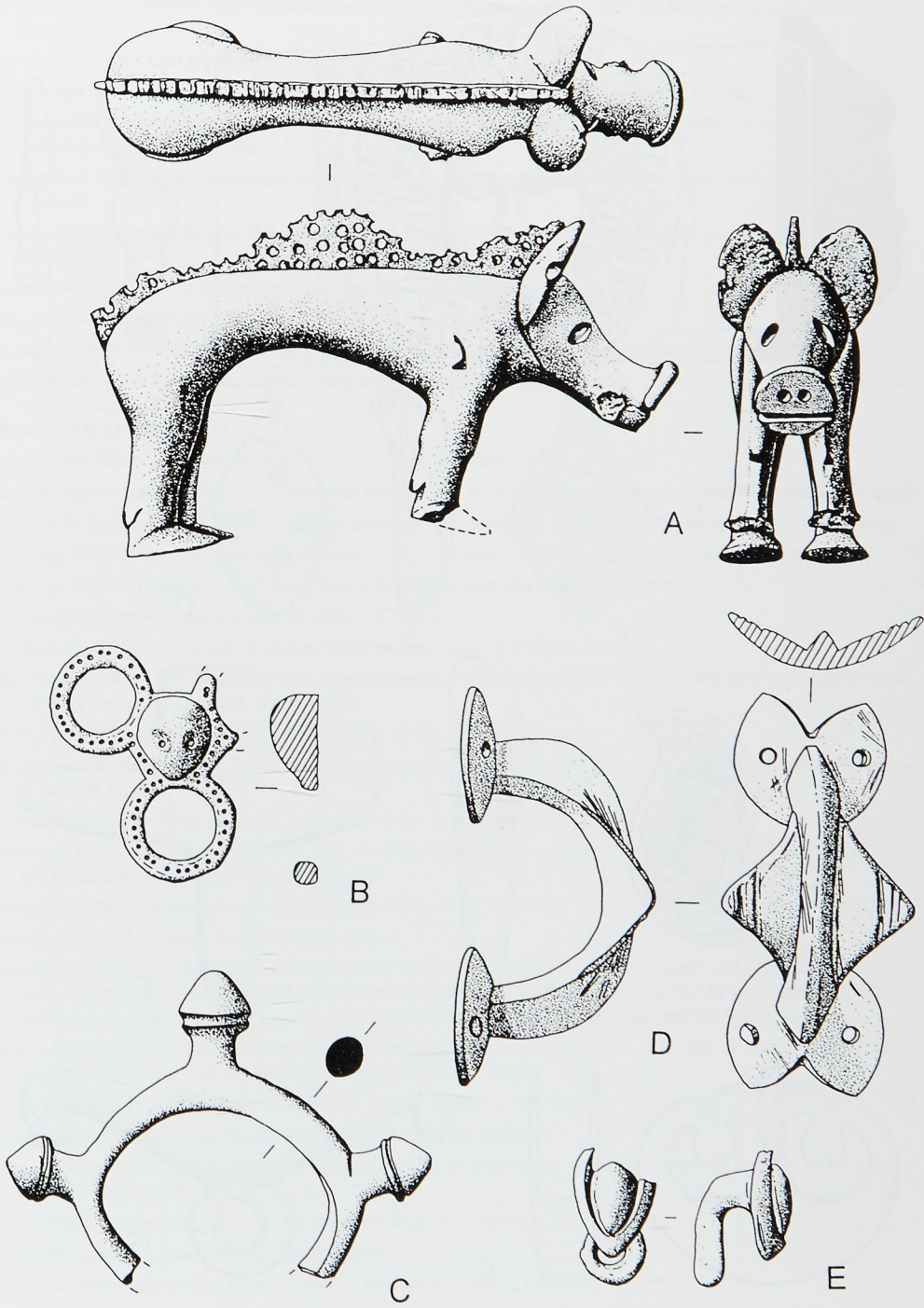


Fig. 2. Iron Age finds. Scale 1:1.

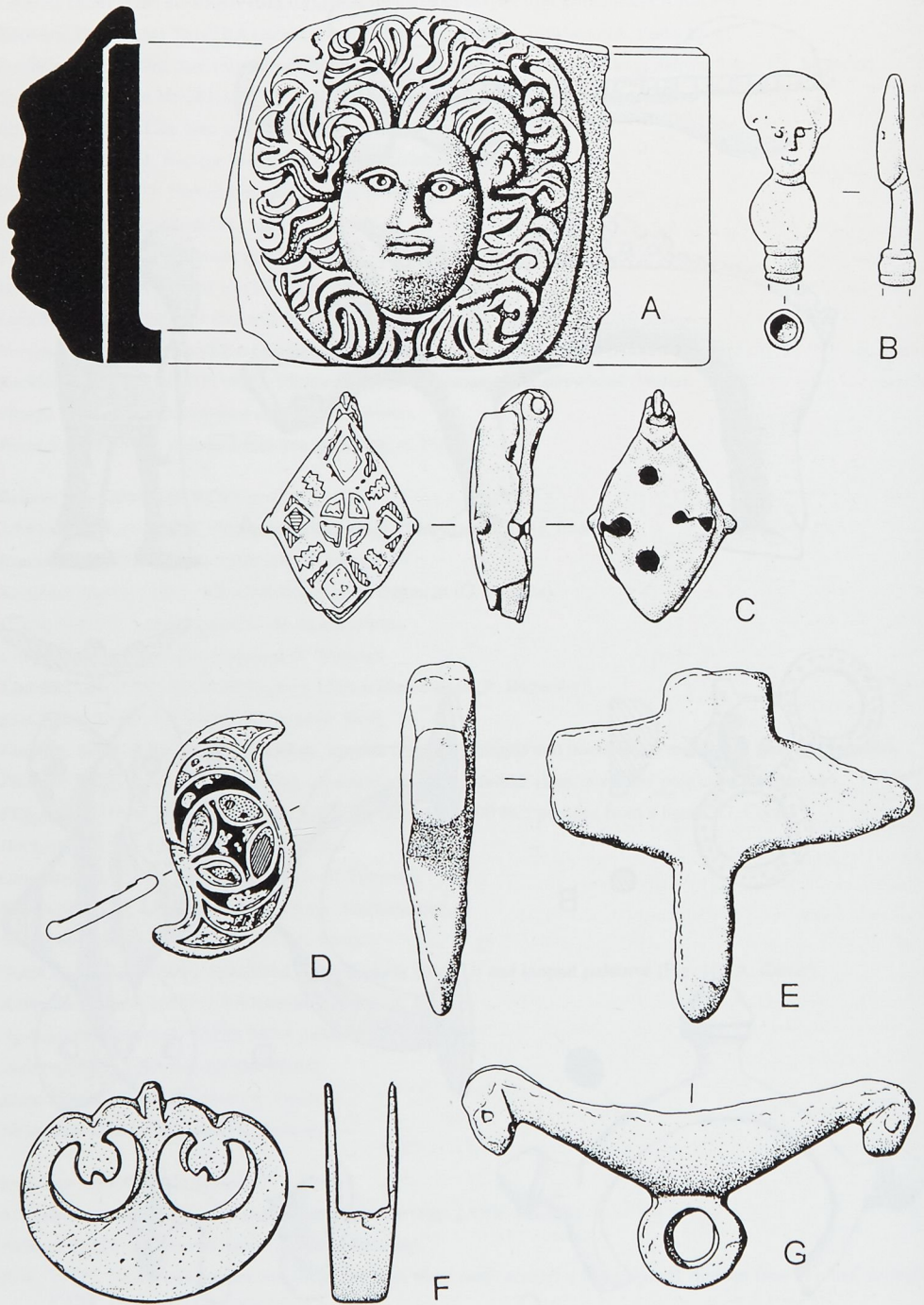


Fig. 3. Roman finds. Scale 1:1.

- Narford* 34141. Decorated strip with a design similar to the Hammersmith dagger sheath, possibly C4/C3 BC (S. Brown).
- Northrepps* 33237. Cast toggle (D. Lieurance).
- Oxborough* 34131. Incomplete brooch, probably an exotic type dating to C7–C4 BC (M. Carlike).
- Pentney* 15170. Domed openwork triskele or whirligig decorative fitting, the voids originally enamelled, function uncertain, C2/C1 BC (M. Coggles).
- Quidenham* 10792. Linchpin terminal decorated with incised 'overlapping circles', 'stippling' and ring and dot (E. Crick).
- Runtton* 36090. Curved bar with finial panel decorated with red enamel, perhaps a harness strap joiner or hook (J. Morrison).
- Tacolneston* 35918. IA or RB linch-pin terminal (A. Womack).
- Thurlton* 34820. Terret fragment, C1 BC/C1 AD (K. Woodhouse).
- Tuttington* 33592. Platform terret fragment with one enamelled platform extant, C1 AD (C. Thorpe).
- Whissonsett* 31800. IA or Roman **button and loop fastener** (Fig. 2E)(G. Linton).
- Roman (AD 43–410)**(Fig. 3)
- Bracon Ash* 35891. Knife handle in the form of a lion, probably C1/C2 (A. Kedge).
- Buxton with Lammas* 24295. Lozengeform **seal box lid** (Fig. 3C) with elaborate champlevé enamel decoration (N. Paul).
- Caistor St. Edmund* 12575. Hinge from armour and circular openwork mount from armour or harness (G. Davies).
- Cawston* 19522. Openwork gold ring, the bezel with a cabochon-cut garnet, probably late C4 (J. Blocksidge).
- Cawston* 36087. Hollow cast eagle head from a figurine or linch-pin terminal (J. Barret).
- Crimpleham* 31954. Pottery scatter (A. Oliver, A. Ison).
- Denton* 35976. Near-complete lathe-turned copper alloy vessel, C1/C2 (G. Wolston).
- East Walton* 30884. Flat 'S'-shaped **object or mount** (Fig. 3D), enamelled, of uncertain function, but reminiscent of C2 Dragonesque brooches (J. and P. Wells).
- East Winch* 30030. Protected loop terret (J. and P. Wells).
- Erpingham/Wickmere* 28524. Patena handle fragment with moulded bird on altar, with a leonine animal curled around its base (S. Horn).
- Felmingham* 36571. Solid cast knife handle with dog's head terminal (C. Thorpe).
- Fincham* 35596. Silver finger ring with gem, showing Neptune foot on prow holding a fish or small dolphin; C2/C3 and an uncommon type in Britain (C. Sproule).
- Hevingham* 29292. **Centre-loop cosmetic mortar** (Fig. 3G)(C. Hawes).
- Hockering* 36541. Multiple bow brooch (A. Carter).
- Hockwold cum Wilton*. Lead defixio tablet, rolled, with text including CELIANVS (name) and LITTERAS ('letters'). An enamelled hare brooch. A cast **leaded bronze vessel** (Fig. 3A) with ovoid medallion of Medusa in high relief. A vessel handle attachment with a female bust with elaborate hairstyle set on a vine leaf (D. Woollestone).
- King's Lynn/Middleton* 36070. Silver finger ring, the bezel with a cast male bust, helmeted (K. Baldero). Also centre-loop cosmetic pestle with the loop in the form of a bird (K. Brock).
- Little Barningham* 36556. Aesica brooch with 'foliage' decoration (B. Bing).
- Long Stratton* 12513. Lunate pendant from horse harness (M. Harmer).
- Long Stratton* 18273. Late C4/early C5 silver finger ring of 'Brancaster' type with inscription inlaid in niello VT1 / FELIX ('Use (this) happily')(L. Laing).
- Lynge* 35292. Mount from casket in the form of a snake (A. Carter).
- Lynge* 36614. **Votive hammer** (Fig. 3E)(C. Barney).
- Marsham* 33240. Enamelled animal brooch in the form of a sitting hen (N. Paul).
- Matlask* 36550. Figurine fragment in classical male pose (E. Weitz), and metalsmith's claw hammer (P. Hudson).
- Merton* 30988. Finger ring with overlapping snake-head terminals (D. Sheldrake).
- Narborough* 32309. **Head of a hairpin** (Fig. 3B) in the form of a half-round female bust (A. Oliver, A. Ison).

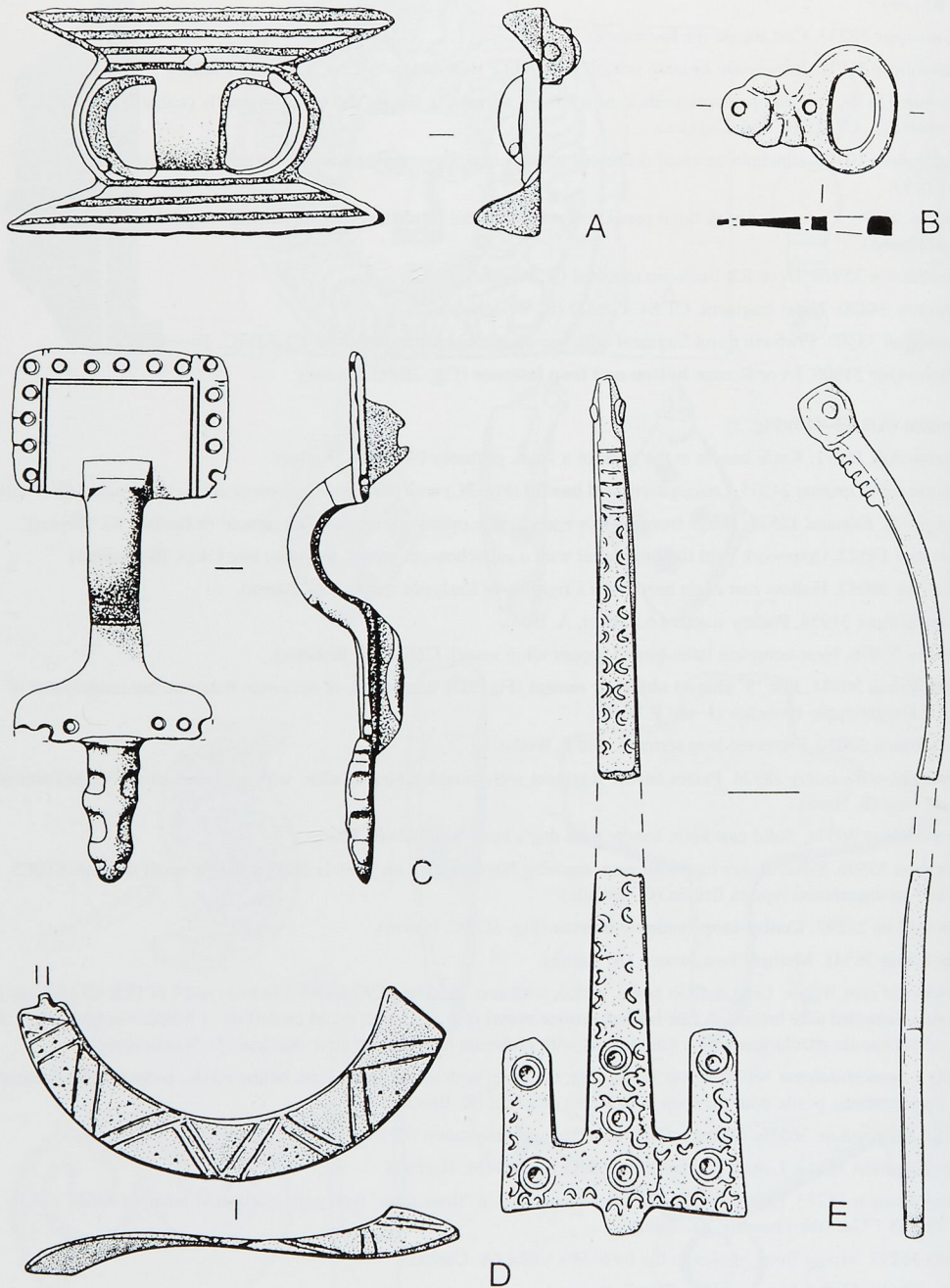


Fig. 4. Early Saxon finds. Scale 1:1.

Newton Flotman 36651. Tinned/silvered finger ring with nine external concave facets, each with a letter reading AnTNIVnOE (W. Burman).

Shelton 34604. Bracelet fragment reused as a child's finger ring (L. Laing).

Sheringham 36562. Pottery of C2/C3 found below an eroding cliff (J. Gibbs).

Shipdham 36285. Neck ring of twisted square rod, similar to C3/C4 bracelets (W. Dodgson).

Skeyton 36548. Bucket-handle escutcheon plate (C. Speer).

Snettisham 1515. High lead alloy lozengiform brooch fragment, unfinished with casting flaws and a tube for the catchplate (J. Bocking).

Stanfield 30600. C3 pelta-shaped **scabbard chape** (Fig. 3F)(K. Dickerson).

Swafield 35973. Protected loop terret (M. Watts).

Swanton Morley 36630. Military horse harness pendant (A. Carter).

Tacolneston 35831. Leaf-shaped seal box with enamelled leaves (A. Womack).

Thompson 36089. Vessel mount in the form of a bust of ?Cupid (T. Beales).

Wacton 35157. Late C4/early C5 'soldiers and settlers' type buckle (L. Laing).

Wreningham 28494. Finger ring (A. Kedghe).

Wymondham 35515. Wonderfully complete bow-and-fantail brooch (R. Purdy).

Early Saxon (AD 410–650)(Fig. 4)

Banham 10840. Iron spearhead (T. Cawston).

Brettenham 5653. Three Roman coins pierced for re-use as pendants (A. Lee).

Burnham Market 35847. Probable gusset plate (G. Houston).

Burnham Market 36623. Late C5 **equal-arm brooch** (Fig. 4A) of extremely unusual form, the head and foot plates connected by a semicircular bow flanked by arches springing from the bow-plate junction (G. Eldridge).

Colkirk 30867. Lead model for brooch (B. Grieves).

Costessey 35728. Equal-armed brooch (C. Hawes).

Feltwell 21137. Sherds from cremation urns and a blue glass bead (D. Woollestone).

Hillington 35913. Almost complete **small-long brooch** (Fig. 4C)(C. Merchant).

Little Snoring 36578. Saucer brooch and plaque/?belt mount with garnet (G. Parsons).

Longham 35915. **ES or MS buckle** (Fig. 4B)(R. Barney).

North Tuddenham 35696. **Annular brooch fragment** (Fig. 4D)(A. Carter).

Oxborough 31759. **Girdle hanger** (Fig. 4E)(A. Ison).

Shipdham 31727. Buckle (B. Dodgson).

Swafield 36604. Tiny small-long brooch (B. Woodrow).

Tuttington 33592. Part of a later C6/early C7 hanging bowl escutcheon (C. Thorpe).

Wormegay 17286. ES (or MS/LS) gilded mount or strap-distributor in the form of a Viking-style building gable with animal heads; similar to a plate at Snape of c. AD 600 (S. Brown).

Middle Saxon (AD 650–850)(Fig. 5)

Bawburgh 36592. C9 **MS/LS mount from ?strap-distributor** (Fig. 5A), with animal-head terminals and inlaid lines of niello and silver panels with engraved interlaced beasts (D. Alger).

Blakeney 33820. Gilded crescentic/sub-triangular mount decorated with pure stranded interlace; probably from horse gear, on account of its looped attachments (B. Bing).

Honingham 20008. C8/C9 MS/LS large gilt ball-headed pin decorated with bosses with spiral filigree wire and glass pellets (D. Marjoram).

North Tuddenham 22639. Gilded base silver alloy brooch or mount (A. Carter).

Oxborough 1021. **MS or LS strap-end** (Fig. 5B)(A. Oliver).

Oxborough 23506. Part of a **one-piece brooch** (Fig. 5C) with ring-and-dot decoration — a type once thought to be Bronze Age/Iron Age. Other examples found recently at Sedgeford (S. Brown).

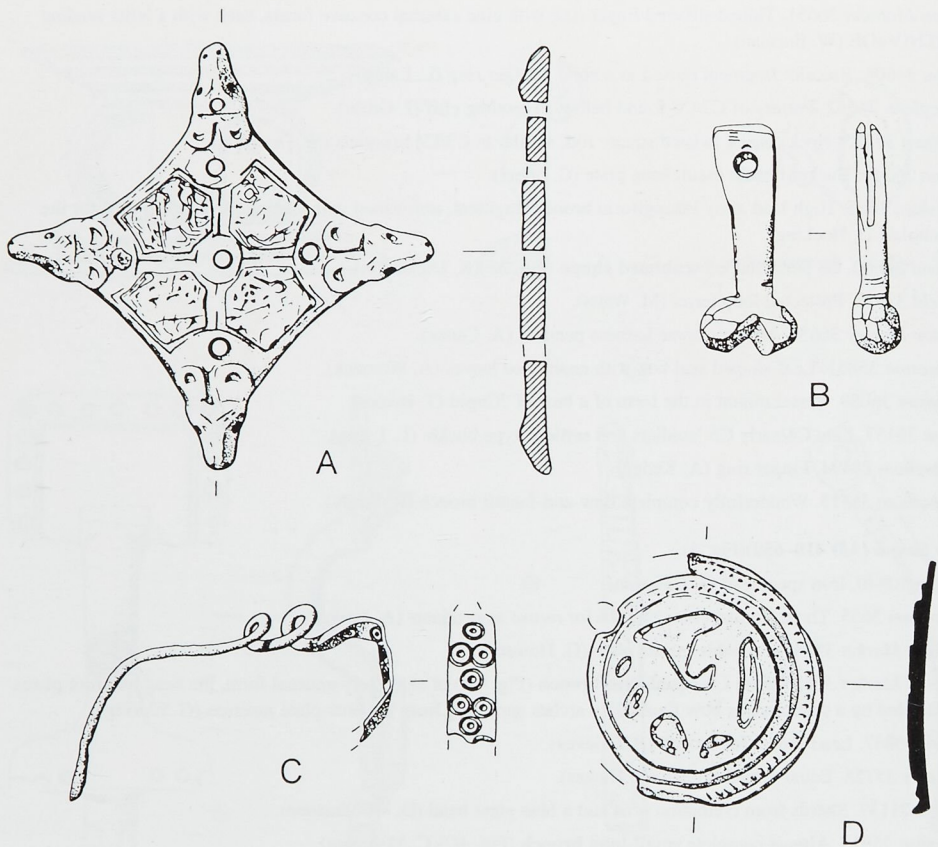


Fig. 5. Middle Saxon finds. Scale 1:1.

Riddlesworth 36076. C9 MS/LS enamelled disc brooch (Fig. 5D) with backward-turning beast (D. McCubbin).

Surlingham 31997. Two almost identical MS/LS strap ends, with animal-head terminals with niello inlay (J. Scanlon).

West Rudham 28131. Silver gilt ear-scoop with faceted shank, collared polyhedral knob and dog-like animal heads with blue-green glass eyes. C8 (A. Mears).

Wormegay 17286. Extended lozengiform brooch with ring-and-dot decoration, of a newly recognised type. Two other examples are known (Norfolk, Sedgford)(S. Brown).

Late Saxon (AD 850–1066)(Fig. 6)

Alderford 34149. Stirrup-strap mount (Fig. 6A)(P. Buckley).

Blakeney 33819. Hammered ingot (R. Walters).

Burlingham 36647. Extremely unusual stirrup terminal, with obliquely-set quatrefoil 'bezel' and backplate ending in a flattened figure-of-eight terminal (A. Brewer).

Colney 9332. Gilt convex disc brooch (Fig. 6F) with Jellinge-style ornament, a late C10 import (D. Alger).

Congham 30754. Lead trial-piece for a Winchester-style strap-end (Fig. 6C)(J. and P. Wells).

Hockwold cum Wilton 36202. Iron pattern-welded spearhead dredged from the river (J. Burbidge).

Holme next the Sea 36558. Bridle cheekpiece with engraved Ringerike-style decoration (K. Brock).

Letheringsett with Glandford 25948. Object with cast Borre-style ornament (Fig. 6B), probably an Anglo-Scandinavian buckle plate or strap fitting (G. Owen).

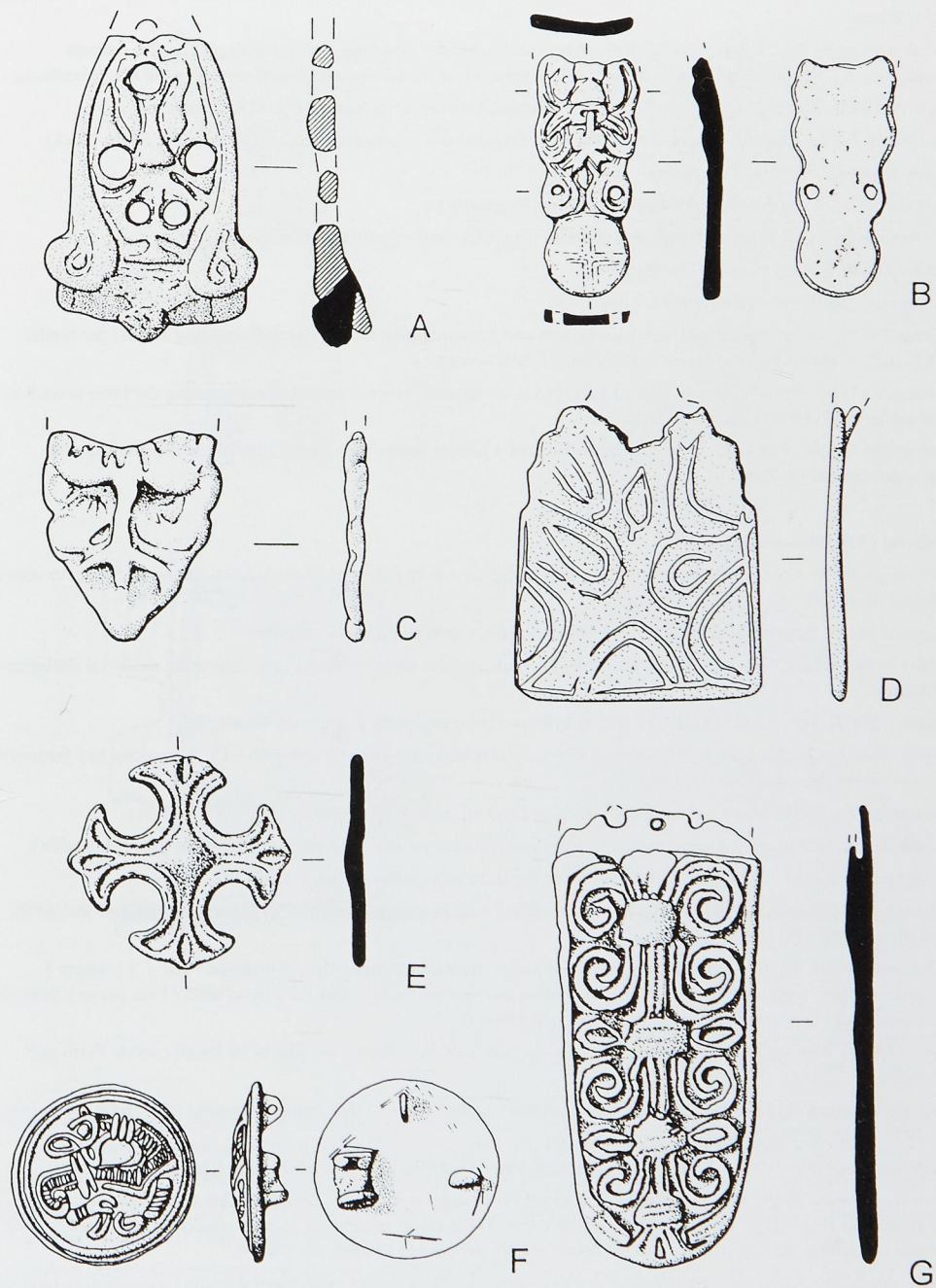


Fig. 6. Late Saxon finds. Scale 1:1.

- Norfolk no provenance* 35134. C11 trefoil bridle mount with Ringerike-style decoration, probably made in East Anglia (M. Watts).
- Norton Subcourse* 36227. Two almost identical brooch fragments, matching a third found previously; perhaps indicating a production site. Also a **brooch in the form of an equal-armed cross fleury** (Fig. 6E)(K. Woodhouse).
- Postwick* 20434. Bell with hexagonal cone, and trapezoidal stirrup-strap mount (Fig. 6D)(G. Linton).
- Quidenham* 24050. Conical, six-sided bell with faint ring-and-dot decoration, perhaps Norse and C10 (E. Crick).
- Saham Toney* 35636. Ingot (M. Nudd).
- Scarning* 35972. Crescent-shaped finger or ear ring (R. Jenkins).
- Shipdham* 36287. Gilt **Winchester-style strap-end** (Fig. 6G), probably C11 (B. Dodgson).
- Skeyton* 36548. Stirrup mount (J. Golden).
- Tacolneston* 35831. Stirrup terminal (A. Womack)
- Wiveton* 33250. Silver brooch: not a Dirham brooch and not containing a coin, but with lettering around the border X?...BP.... Within this the design is indistinct (J. Blackburn).
- Wormegay* 17286. Part of a double-shelled gilded oval or 'tortoise' brooch; probably representing the same brooch as an earlier find (1999, J. Coggles)(S. Brown).
- Wymondham* 29283. Stirrup strap mount, in the form of a human figure with outstretched arms intertwined with foliage/serpents (R. Purdy).

Medieval (AD 1066–1500)(Fig. 7)

- Aldborough* 36251. Cast handle mount, hollow with a lead core, in the form of a female head, from a C15 laver or water vessel (S. Horn).
- Alderford* 34149. Late medieval or early post-medieval toy tripod cauldron (G. Davies).
- Beetley* 35849. C12–C14 pottery found under the floor of an old cottage's outbuildings, indicating medieval settlement (White).
- Blakeney* 33820. Very unusual C11/C12 folded strap end decorated with a figure (H. McGirt).
- Burnham Market* 36155. Cast double-hooked fastener decorated with saltires, probably C12. Also a cast key fragment in extremely fine condition (G. Eldridge).
- Burnham Overy* 36648. Plain narrow globular jug in Frechen stoneware, probably 1550–75 (C. Mills).
- Emmeth* 36164. Gilt strap-end, decorated with a red enamelled cross above an engraved tower or gate (M. Carlile).
- Eppingham/Wickmere* 28524. Cast ferrule/mount in the form of a griffin's head, C12/C13 (J. Cornwell).
- Felmingham/Tuttington* 36570. Annular brooch inscribed with Lombardic letters]??NRI[on one side and]E/SAV/E[on the other (C. Thorpe).
- Hilborough* 33364. Medieval finger ring, inscribed +ies * autem * transiens * per * medium * nat / i * autem * transiens * per * medium * morinu (I am but passing through the means of/by the way of birth / I but passing through the means of / by the way of death/ plague) (C. Matthews).
- Hockwold cum Wilton* 23340. C13/early C14 souvenir badge of St. Andrew, the first to be found outside Perth and London (T. Young).
- Little Massingham* 36151. Silver-gilt devotional pendant, in the form of a dish holding the head of St. John the Baptist, c.1400–1535 (C. Merchant).
- North Runcton* 35895. Unusual late medieval double-looped buckle, with C15 parallels in London (R. Nichols).
- North Tuddenham* 35696. **Gilt pendant** (Fig. 7A) tau cross engraved with the crucified Christ and ?St. Anthony. Also a **strap-end** (Fig. 7B) engraved with a similar cross. The cross is associated with the Order of Hospitallers of St. Anthony; pilgrim badges of the order are found in C15 deposits in London (A. Carter).
- Northrepps* 33242. An exceptionally fine gilded cast openwork buckle plate, with panel depicting a classical or biblical scene, C15/C16 (D. Lapointe).
- Ormesby St. Margaret with Scratby* 36074. Very unusual copper alloy handle for an iron key. Roman examples are common but medieval examples are rare (I. Sutton).
- Pentney* 16583. Sword pommel of 'wheel' type, engraved with the English royal arms 1198–1340 but probably c.1400 (M. Coggles).

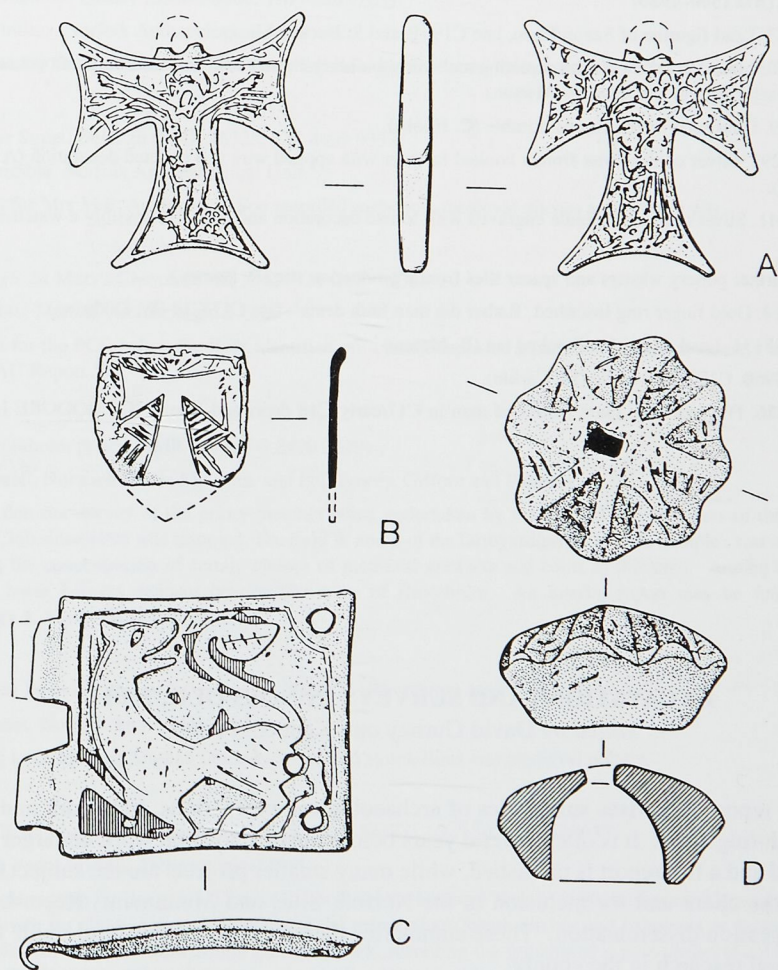


Fig. 7. Medieval finds. Scale 1:1.

Quidenham 30364. Purse bar with inlaid niello lettering PAS VIVIS/RECUIES* (perhaps 'you live' and garbled 'rest' but incomplete, so untranslatable), late C15/early C16 (K. Littlechild).

Quidenham 34974. **Buckle plate** (Fig. 7C) with Romanesque lion passant regardant on a ?Limoges enamelled field, late C12/C13 (E. Crick).

Reepham 34049. Gold finger ring, C15 (N. Cornwell).

Reepham 36573. Concentration of C12–C14 sherds (M. Champion).

Skeyton 23248. Lead papal bulla of Alexander IV (1254–61) with one side cut down the middle, presumably to cut out the tag attached to the document (J. Blocksidge).

Tacolneston 35831. **Sword or dagger pommel** (Fig. 7D) of 'scent-stopper' form, first half of C15 (A. Womack).

Wicklewood 8897. Folding clasp frame fragment with ?mitred head of ?bishop (C. Seaman).

Wiveton 33250. Gold/sapphire finger ring, C13 (J. Love).

Post-medieval (AD 1500–1950)

Alderford 19643. Lead figurine of Saxon/Dane, late C19 (P. and S. Buckley).

Edgefield 35970. Lead decorative plaque depicting a classical building/church with a central door and columns, with capitals on each side and windows (P. Dawson).

Grimston 11789. Unusual double-skinned thimble (C. Hooks).

Hevingham 29292. Silver conical boss from a hooked fastener with applied wire and pelleted decoration (A. Matthewson).

Hockering 36541. Silver cube and spindle engraved with foliate decoration and S N T P, possibly a watch-winder (A. Carter).

Lyng 12459. Further pottery wasters and spacer tiles from a production site (R. Barney).

Shipdham 36284. Gold finger ring inscribed 'Rather die then faith denie', late C17/C18 (W. Dodgson).

West Rudham 28131. Lead model for ?hooked tag (B. Mears).

West Walton 18950. C17/C18 whistle (M. Carlile).

Wormegay 17286. Fob seal with glass matrix of man in C17/early C18 dress and legend 'COMODORE HANSON' (S. Brown).

EXCAVATIONS AND SURVEYS IN NORFOLK, 2001

edited by David Gurney and Kenneth Penn.

This annual report comprises summaries of archaeological excavations, fieldwork and surveys carried out during 2001. It is often several years before post-excavation work on larger projects is completed and a full report is published, while many smaller projects are the subject of 'grey' reports for the client and for inclusion in the Norfolk Sites and Monuments Record, without further publication/dissemination. These summaries therefore provide a useful guide to recent archaeological research in the county.

A11 Roudham to Attleborough Improvement (SMR 36198)

by James Pixley, Albion Archaeology

Fieldwalking and metal-detecting surveys were undertaken for Babbie Group and May Gurney as part of the advance works, and to enable the effective targeting of areas for the watching brief representing the subsequent phase of works. Fifty-nine areas with varying degrees of archaeological visibility were surveyed along the corridor, revealing a continuous scatter of struck flints and a concentration of post-medieval material around Manor Farm, Roudham (TL 9808 8921). The two most significant concentrations of artefacts were scatters of Roman and medieval pottery at Snetterton (TL 9950 8960 and TM 0063 9065). Albion Archaeology Report 2001/25.

A143 Broome–Ellingham Bypass (SMR 35938)

by David Whitmore, Norfolk Archaeological Unit

A watching brief and subsequent excavation for Norfolk County Council recorded archaeological features at four locations. At TM 3645 9245, crop-marks (SMR 14687) were shown to represent a series of undated drainage ditches. At TM 3447 9081 enclosure and boundary ditches of prehistoric to post-medieval date were revealed. At TM 3489 9096 a small rectangular earthwork was shown to be of late medieval/early post-medieval date. At TM 3565 9176 (Broome Beck), three Bronze Age pits and linear features were recorded. NAU Report 604.