

1. We are grateful to Helen Geake for supplying details of this find.

BIBLIOGRAPHY

- Ekwall, E. 1960. *The Concise Oxford Dictionary of English Place Names* (Oxford), 4th edition.
- Hawes, T. 2000–2. *The Inhabitants of Norfolk in the Fourteenth Century, the Lay Subsidies 1327 and 1332, I–VI* (Norwich).
- Reaney, P.H., and Wilson, R.M. 1991. *A Dictionary of English Surnames* (London).
- Rogerson, A., and Ashley, S., 2003. 'Medieval Seal Matrices from Norfolk, 2002', *Norfolk Archaeology* 44, 348–53

ARCHAEOLOGICAL FINDS IN NORFOLK IN 2003

edited by David Gurney

This is a selection of important finds from an estimated total of around 17,000 objects seen and recorded by the Norfolk Museums & Archaeology Service's Identification and Recording Service for Archaeological Finds, and details of which have been entered on to the Norfolk Historic Environment Record (formerly the Norfolk Sites and Monuments Record) during 2003. The Norfolk HER is maintained by Norfolk Landscape Archaeology at Gressenhall and may be consulted by appointment (tel: 01362 869281/2 or email smr.mus@norfolk.gov.uk).

The NMAS's Identification and Recording Service for Archaeological Finds was staffed during 2003 by Andrew Rogerson, Steven Ashley, Katie Hinds (to August 2003), Erica Darch (from October 2003) (partly funded by the Department of Culture, Media and Sport's Portable Antiquities scheme) and Adrian Marsden (Department of Culture, Media and Sport's Portable Antiquities Scheme Finds Liaison Officer) and Dave Wicks (photographer).

The entries are arranged by period and, within each period, by parish alphabetically. The number after the parish name is the Norfolk HER number. Grid references have been omitted at the request of finders. Metal artefacts are of copper alloy (bronze) unless otherwise stated. Bold text indicates that an object is illustrated.

Norfolk finds are being added to the Department of Culture, Media and Sport's Portable Antiquities website at www.finds.org.uk. Details of Middle Saxon, Late Saxon and medieval coins are submitted to the Fitzwilliam Museum's *Early Medieval Corpus, Single Finds of Coins in the British Isles, 410–1180*, which can be consulted online at www.fitzmuseum.cam.ac.uk/coins/emc.html. A selection of numismatic finds and seal matrices are presented elsewhere (this volume).

The assistance of colleagues in the Archaeology Department at Norwich Castle Museum and Art Gallery (John Davies, Tim Pestell, Alan West), Peter Robins (flint identifications) and colleagues in other institutions, especially the British Museum, the Fitzwilliam Museum, the Ashmolean Museum, the Museum of London, the Institute of Archaeology in Oxford and Suffolk County Council's Archaeological Service with the identification of finds is most gratefully acknowledged. Natasha Hutcheson provided reports on Iron Age finds.

The majority of the finds listed have been found in the course of fieldwalking and metal-detector survey, with many finds from the latter being reported by members of Anglian Historical Searchers, Anglian Metal Detectors, East Norfolk Metal Detectors, Norwich Metal

Detectors and the West Norfolk Search and Recovery Group. Ian Riddler identified finds by groups of American visitors ('Discovery Tours').

Norfolk Landscape Archaeology is most grateful to all those who send in reports or bring in finds (however discovered) for identification and recording, thereby contributing to the NHER and this annual list.

The illustrations are all by Sue White, freelance illustrator, except for Fig. 3B and 3D (by Kenneth Penn, Norfolk Archaeological Unit) and Fig. 6D (by Donna Wreathall, Suffolk Archaeological Unit).

Palaeolithic (pre-10,000 BC)

- Caister on Sea*. Small thick cordate handaxe (D. Ransome).
Colkirk 37129. Flakes (N. Abram).
Diss. Pointed Late PAL handaxe (M. Noble).
East Winch 38126. Two handaxes (D. Curl).
Feltwell. Late Upper PAL or MESO plunging blade (D. Woollestone).

Mesolithic (10,000–4000 BC)

- Beetley* 39703. Flint blade (M. Riddiford).
Great Dunham 21441. MESO or early NEO blade (M. de Bootman).
Tittleshall. ?Late MESO blade core (A. Davison).
Tuttington 33592. Strike-a-light (D. Alger).
Weeting with Broomhill 14945. Two blade cores (T. Clark).

Neolithic (4000–2000 BC)

- Acle*. Massive axe (D. Baker).
Aldborough 39710. Four flaked flint axes, perhaps from a hoard. Late NEO/EBA knife/dagger (T. Linford).
Carleton St. Peter 35090. ?NEO multipurpose tool, including a scraper, knife and notch or concave scraper (S. Pagan).
Feltwell 20979. Pottery sherd (D. Woollestone).
Forncett. Massive ?ceremonial polished axe from a riverine location (B. Tunmore).
Hoveton. Polished axe (M. Pye).
Sporle with Palgrave 19824. Early NEO or possibly MESO flaked tranchet axe (T. Palmer).
Watton. Blade-like flake (H. Hines).

Bronze Age (2000–650 BC)

- Barton Bendish* 20399. MBA spearhead socket (S. Brown).
Besthorpe/Wymondham 37262. Fragment of MBA rapier (F. Garner).
Great Witchingham 39541. Spearhead (J. Golden).
Hockwold cum Wilton 37663. LBA penannular gold ring with base metal core and light and dark transverse bands creating a striped effect (J. Deacon).
Merton 37665. MBA/LBA bracelet fragment, the terminal decorated with transverse nicks. Also rapier blade (A. Harvey).
Oxborough 34131. Triangular object, perhaps a sickle re-used as a razor (A. Oliver).
Quidenham. LBA socketed axehead, Wilburton phase c. 1000 BC (K. Littlechild).
Saham Toney 4697. LBA flesh hook (B. Hamilton).
Scarning. MBA rapier point (P. Rilings).
Skeyton 38090. LBA penannular ring fragment, with gold wrapping over a base metal core. 1150–750 BC (B. Jordan).
Tacolneston 35834. MBA side-looped spearhead (P. Thrower).

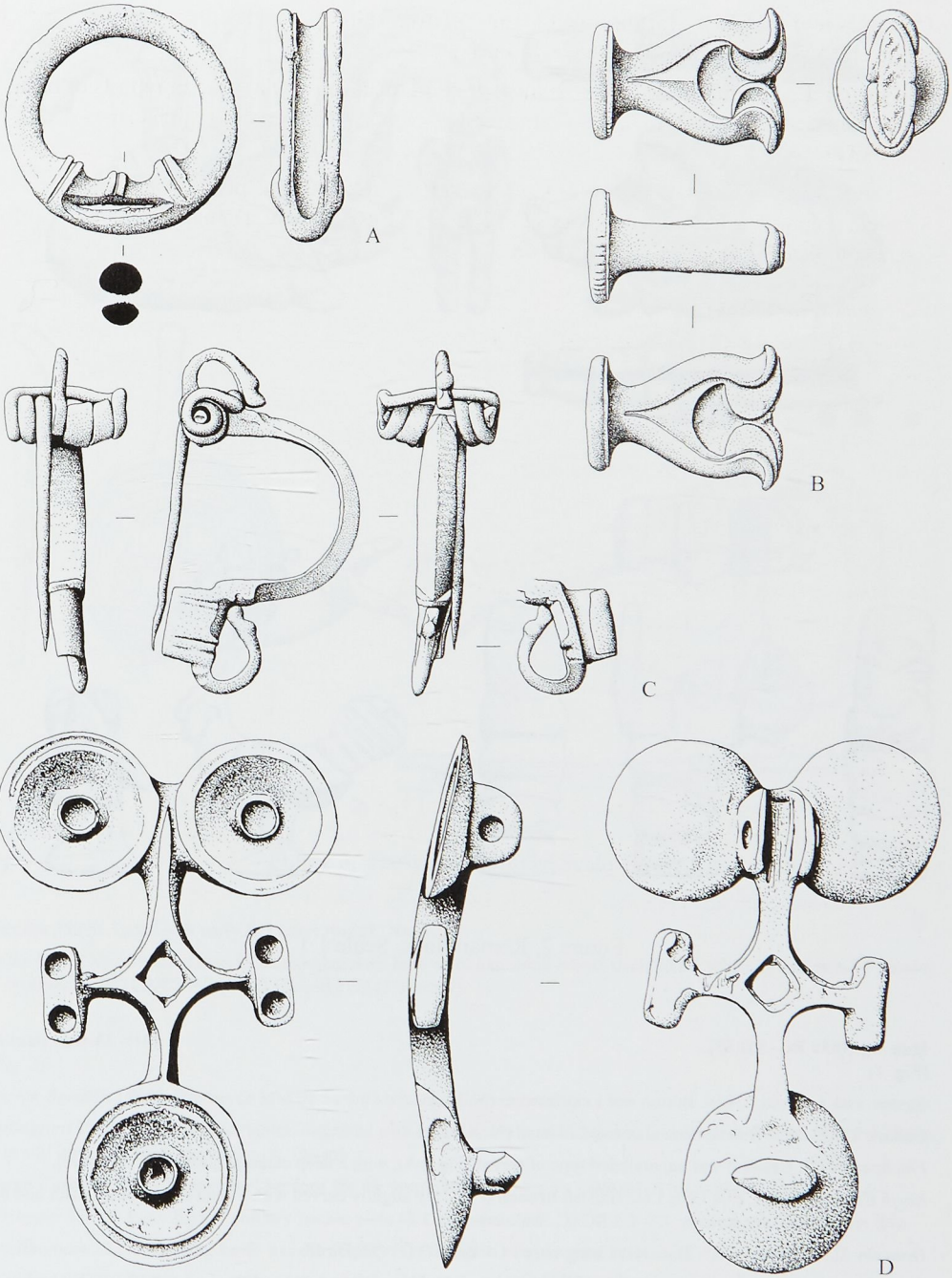


Figure 1. Iron Age finds. Scale 1:1.

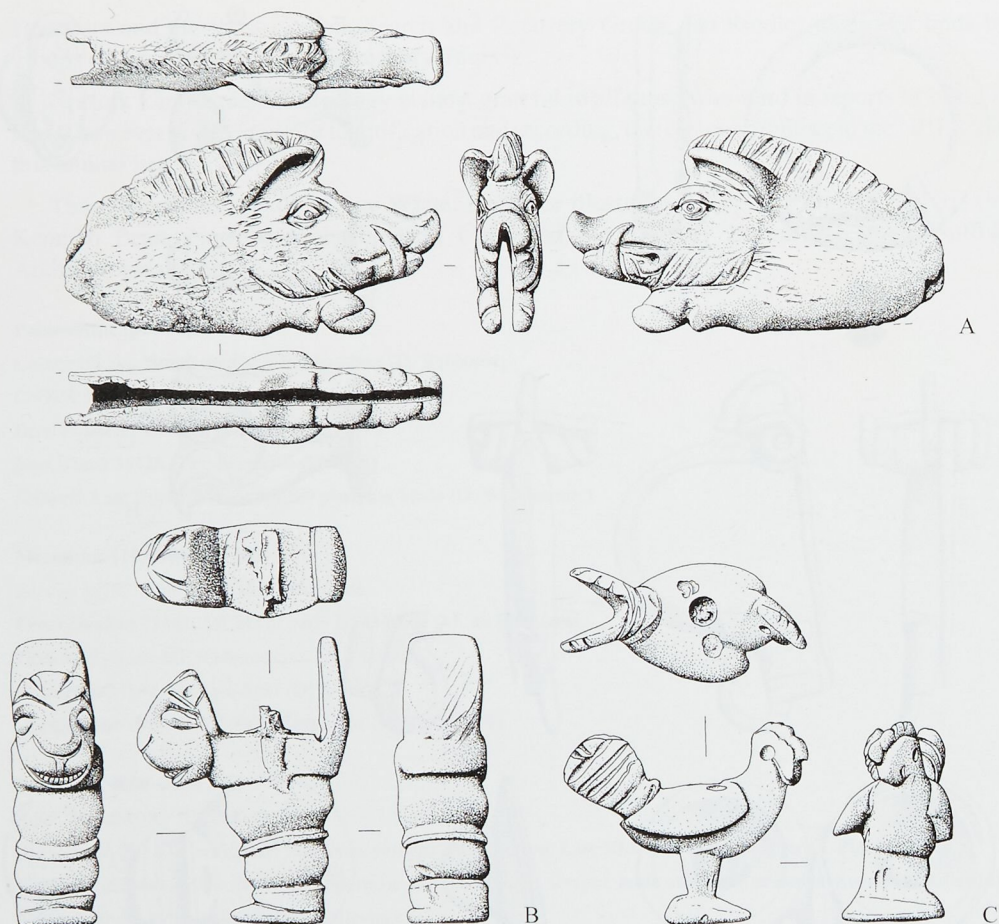


Figure 2. Roman finds. Scale 1:1.

Iron Age (650 BC–AD 43)

(Fig. 1)

Buxton with Lammas 35860. Button and loop fastener (N. Paul).

Colkirk 37132. Nail with decorated enamelled head (N. Abram).

Fincham 38089. Unusual and unparalleled type of **terret** (Fig. 1A), with a deep external channel (C. Sproule).

North Elmham 38164. EIA/LBA Late Halstatt **brooch** (Fig. 1D), slightly curved with a head of conjoined discs and bow with rectangular attachments. C7–C5 BC (C. Walters).

Ormesby St. Michael 39263. Transverse wing **terret**. C1 BC/AD C1 (M. Bird).

Quidenham 35174. La Tène I **brooch** (Fig. 1C) with a high arched bow and swan's head terminal. C4/C3 BC (E. Crick).

Ryston 31096. Cast knife/razor handle in the form of a horse's head. Probably C2 BC/AD C1 (D. Mallet).

Shipdham 37201. **Handle or foot** (Fig. 1B) with recessed pelta, once filled with red enamel. Probably C1 AD (B. Dodgson).

Shouldham Thorpe 39265. Fragment of a 'moustache' (J. Coggles).

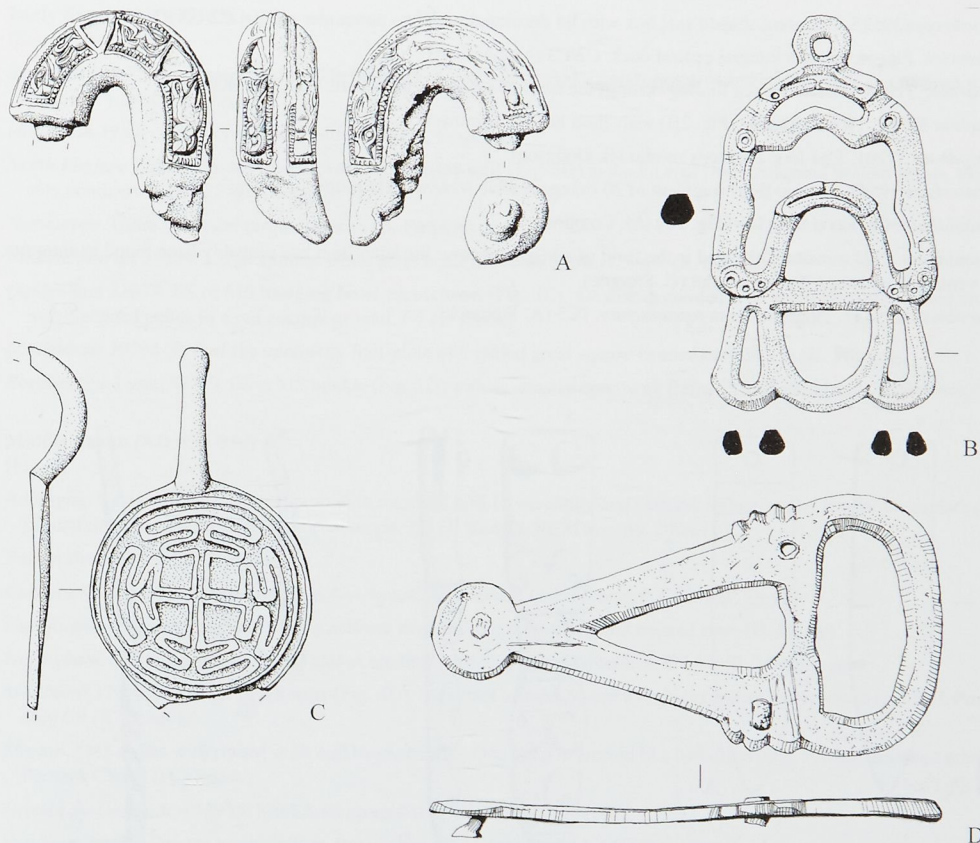


Figure 3. Early Saxon finds. Scale 1:1.

Skeyton 38090. Late IA or early RO torret ring (F. Nielsen).

Stoke Holy Cross 39624. Glass bead, annular, dark blue with nine small bosses each with a white trailed spiral. Probably continental and C2/C1 BC to AD C1/early C2 (J. Harrell).

Roman (AD 43–410)

(Fig. 2)

Barton Bendish 18852. Roman or Middle Saxon stylus eraser (S. Brown).

Billingford 39283. Gold *lamella* (tablet) inscribed with magic symbols and Latin and Greek text to the god Abrasax. Found in soil imported from elsewhere (K. Owen).

Burgh Castle 22934. Chopped bar, perhaps for the preparation of flans for counterfeit coins (M. Drake).

Costessey 35726. Late Roman military buckle plate (J. Carrigan).

Ditchingham 22255. Folding **knife handle** (Fig. 2A) in the form of a charging boar. C1/C2 (F. Crickmore).

Grimston 3579. Tile fragment with unshod adult heel impression (J. and P. Wells).

Letheringsett with Glandford 39278. *Patera*. See *Excavations and Surveys* (this volume, p.580).

Loddon/Mundham 21872. Late Roman amphora-shaped strap end (M. Frolo).

Narford 3974. Exquisite and complete Dragonesque brooch with enamelled chequered decoration. Lead-filled steelyard weight in the form of the head of Venus. C2 (J. and P. Wells).

*Northrepps*39525. Diamond-shaped seal box with lid decorated with two pomander motifs. C2/C3 (D. Baker).

Postwick. Flagon lid with integral central duck. C2/C3 (M. Lambert).

Scarning 31038. Handle from a folding razor in the form of a dog seizing a hare. C3/C4 (P. Rilings).

Shelton 32302. ?**Knife handle** (Fig. 2B) with ?lion head (P. Thrower).

Shipdham 37201. End-loop cosmetic mortar (B. Dodgson).

Shotesham 39547. Mosaic floor fragment of 20 orange marble *tesserae* (Hartnup).

Shouldham. **Cockerel figurine** (Fig. 2C) (M. Coggles).

Shouldham. ?RB miniature axehead in the form of a MBA palstave: the latter item had probably been found in antiquity, venerated and copied as an amulet (C. Sproule).

*Tacolneston*35831. ?Ingot for coin manufacture. ?C3 (A. Womack).

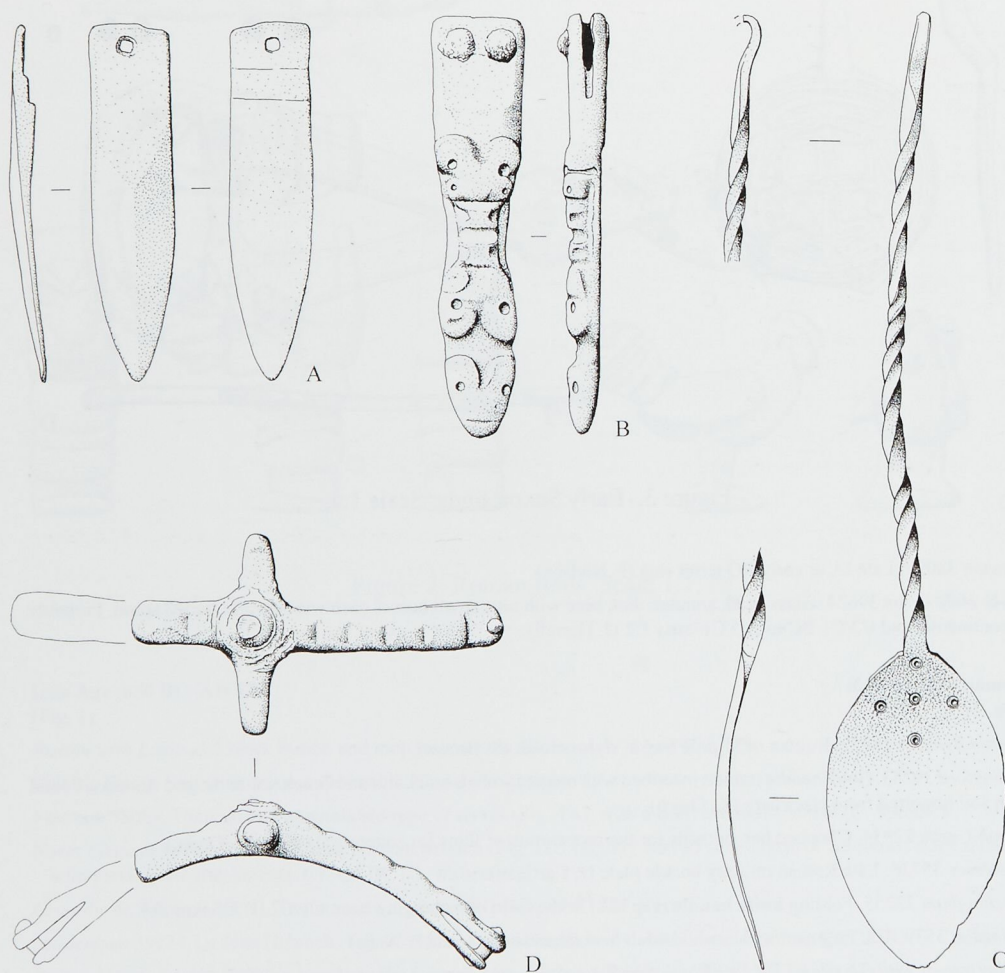


Figure 4. Middle Saxon finds. Scale 1:1.

Early Saxon (AD 410–650)

(Fig. 3)

Beachamwell. ?Base silver gilded **buckle frame** (Fig. 3A) with Style I animal ornament and empty triangular settings with gold foil. Late C6 (S. Brown).

Hillington 39307. Cruciform brooch side knob (M. Coggles).

North Elmham 25848. ES or MS openwork **suspension unit** (Fig. 3B) in the form of two confronted beaked beasts. Probably continental and C7 (B. George).

Northrepps. Glass biconical turquoise bead (B. Purpura).

Pulham Market 39384. Large annular white glass bead with blue spiral. C5–C7 (R. Creasy).

Quidenham 31677. ES or MS **hanging bowl escutcheon** (Fig. 3C), the disc decorated with a central equal-armed cross with flattened peltas in a red enamel ground. C7 (E. Crick).

Quidenham 39294. Part of the openwork foot-plate of a gilded great square-headed brooch. C6 (K. Worton).

Roydon (near Lynn) 39719. ES or MS **buckle** (Fig. 3D) with an unusual openwork frame. ?Continental and C7 (C. Hooks).

Middle Saxon (AD 650–850)

(Fig. 4)

Babingley. Cast openwork silver mount with interlace bird-like creature and features influenced by insular exemplars (*cf.* Lindisfarne Gospels) of Northumbrian-origin. C8 (J. Burge). NCM acc. no. 2003.171.

Barton Bendish 18852. See *Roman*.

Carleton Rode 34859. **Strap-end** (Fig. 4A), unusual because it is undecorated. C8/C9 (P. Day).

East Rudham. **Spoon** (Fig. 4C) with cruciform ring-and-dot decoration and twisted stem (B. Mears).

Hevingham. MS or LS gilt mount or casket binding with chip-carved interlace. C8/C9 (B. Matthewson).

Mattishall 37264. MS or LS **prick spur** (Fig. 4D), the extant arm decorated with nicks and an animal-head terminal. Probably C9 (K. Brock).

Merton. ?MS stylus with ribbed shaft and banded collar. One band is faceted like MS dress pins. Flaring, rounded eraser. Perhaps C8/C9 (H. Hines).

Newton by Castle Acre 32935. MS/LS **strap-end** (Fig. 4B). C9 (M. Slaven).

Roudham 39659. Double hooked clasp dress fastener or 'shroud hook'. C8/C9 (L. Swallow).

South Walsham 39277. MS or LS stylus with a faceted stem. C8/C9 (D. Howes).

Sporle with Palgrave 28738. Stylus or styliform pin with triangular 'eraser' (M. Slaven).

Tibenham 17868. Silver finger ring, with oval bezel decorated with a Trewhiddle-style animal and niello. C9 (P. Day).

Wighton 34521. ?MS styliform pin, with a slot for a ?linking chain (D. Fox).

Wrampingham 33055. MS or LS nummular brooch with a portrait on both sides. One based on Alfred the Great's coins of c. AD 885–90 and the other on Byzantine coins of C8 and later (R. Purdy).

Late Saxon (AD 850–1066)

(Fig. 5)

Blakeney. Zoomorphic stirrup mount in the form of a wolf's head with vestigial beasts. C10 (O. Bing).

Bradwell 39556. Silver ingot bar with rounded triangular section. 58.26g (B. Taylor).

Hillington. Lead weight, 106.73g, which is almost exactly four times the significant unit of weight (26.6g) known from published Dublin finds (C. Seaman).

Horning 5199. Lead plaque with runic inscription: 49 runes (48 Norse and one an Anglo-Scandinavian hybrid) the meaning of which is not known, so perhaps in code. Probably early C11 (I. Tubby).

Merton. Lead disc brooch. C10 (H. Hines).

Northrepps. Strap-end decorated with back-turned leonine beast biting at foliage. C10 (B. Weaver).

Sandringham. Lead ?Thor's hammer **pendant** (Fig. 5A), coarsely finished if not a model (J. Burke).

Skeyton. **Bridle cheek-piece** (Fig. 5C) with zoomorphic mask (C. Thorpe).

Starston 39359. Balance **suspension unit** (Fig. 5B) with animal-head terminals. C10/C11 (J. Hutchings).

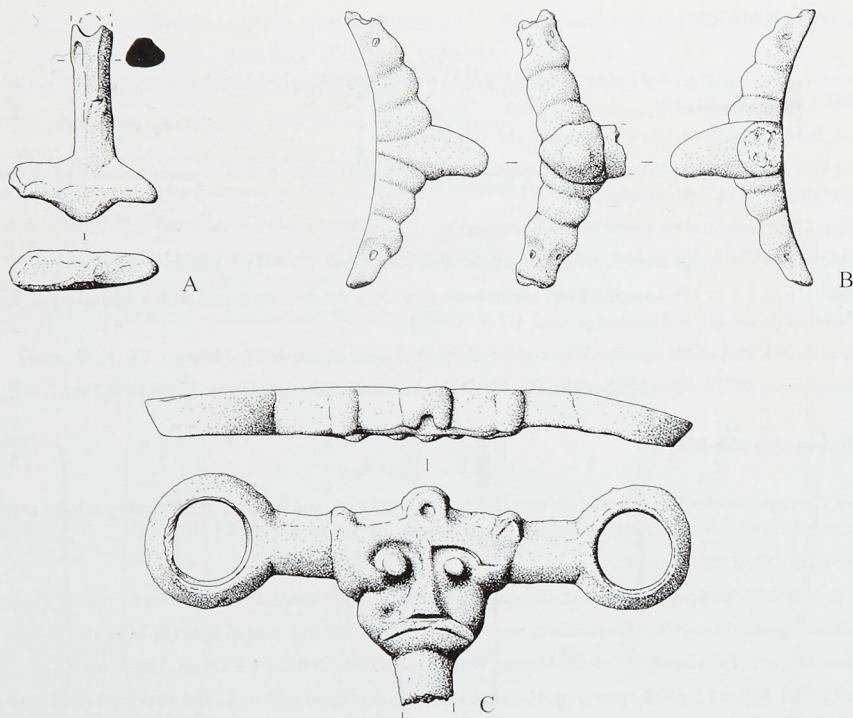


Figure 5. Late Saxon finds. Scale 1:1.

West Dereham 37525. Gold ingot bar of flattened oval section with rounded ends. Probably Viking and later C9/C10 (M. Webb).

Medieval (AD 1066–1500)

(Figs 6 and 7)

Aldborough. Late MED cast spout in the form of a dog's head. C14/15 (B. Purpura).

Blakeney. Knife terminal in the form of a horse's/donkey's head. C14/C15 (C. Frederick).

Buxton with Lammas 7625. Silver gilt mount from strap or box, engraved with a swan. C14 (N. Paul).

Congham. Gilt **cross** (Fig. 6A), the front depicting Christ crucified with champlevé enamel and the reverse with engraved ornament of the Hand of God emerging from a cloud (?) between flowers in a scroll. Limoges, late C12/C13 (A. Reeve).

Costessey 28422. Silver annular **brooch** (Fig. 6B) with finely cast and modelled wyvern (dragon-like creature). C13 (C. Hawes).

Harling. **Buckle plate** (Fig. 6C) with repoussé decoration of a seated king with a bird perched on his left hand. Late C12/early C13 (M. Forder).

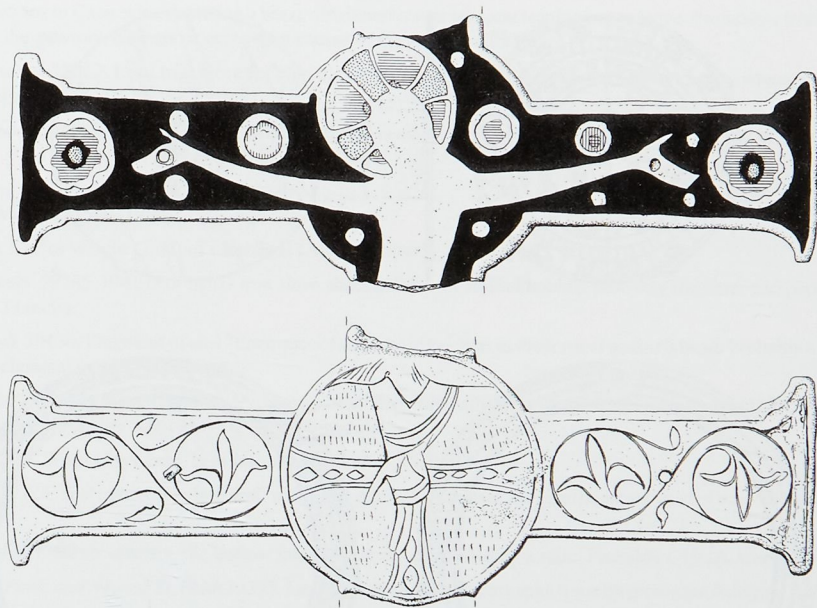
Hevingham 39539. Lead papal bulla of Pope Paul II (1464–71) (J. Blackburn). Large diamond-shaped pendant, C14/C15 (D. Middleton). Pilgrim badge depicting seated and crowned Virgin Mary, C14/C15 (J. Fleming).

Horsham St. Faith and Newton St. Faith 35284. Page holder fragment (A. Kedge).

Kirby Cane 36238. Elaborate decorated **swivel** (Fig. 6D) from dog's lead or similar (R. Caddy).

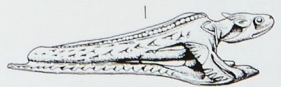
Little Witchingham 37280. Late Med. or EPM lead pencil/stylus (B. Sharrock).

Merton 38055. Pottery bowl rim in a very odd part-oxidised fabric (H. Hines).



A

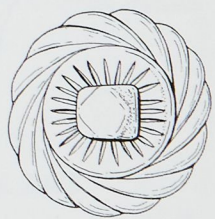
Dark Blue
 Mid Blue
 Yellow
 Red
 White
 Green



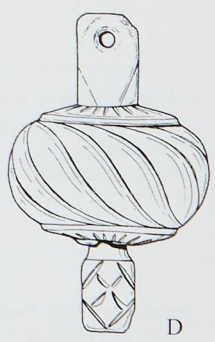
B



C



E



D

Figure 6. Medieval finds. Scale 1:1, except B (2:1).

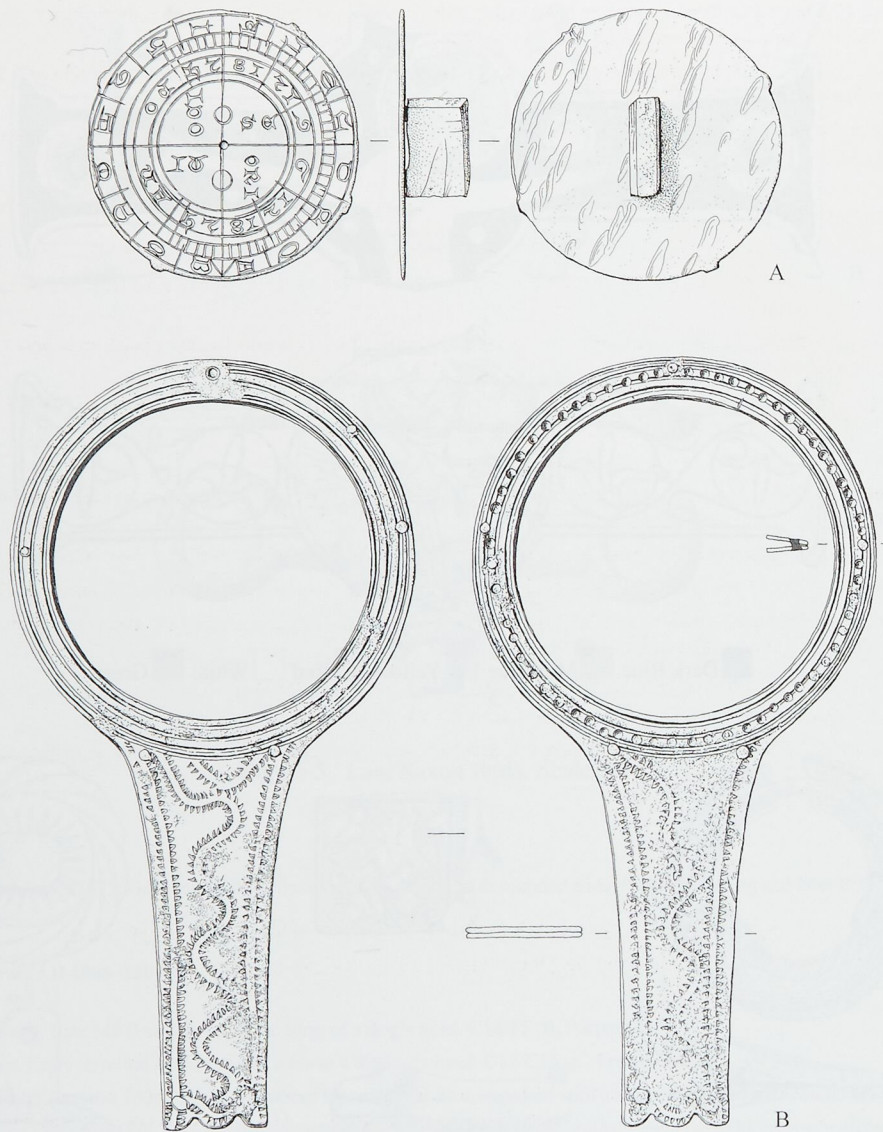


Figure 7. Medieval finds. Scale 1:1.

Mundesley 39454. Found during building restoration, the wooden heads from a late MED hammerbeam roof or from the jetty of a house (P. Carter).

Newton by Castle Acre 32935. Minute silver annular brooch, perhaps to fasten a silk veil (M. Slaven). Animal-head **finial** (Fig. 6E) from an elaborate ?shrine or ?lamp. Probably C12 (M. Slaven).

Shotesham 39266. Late MED or EPM **pocket sundial** (Fig. 7A) with Lombardic letters and numerals (P. Asinall).

Shouldham 39658. Triangular strap-end with split end and animal-head terminal. C11/C12 (C. Sproule).

South Walsham 29489. **Reading glass** (Fig. 7B); a circular frame with integral handle. ?C15 (P. Rilings).

Thetford. Carving in Caen stone depicting a beast with massive rear legs and leaning over a ledge. Probably a frieze decoration from the gateway, buttress or eaves-drip course of the Augustinian Friary (T. Clark).

Thetford/Croxton 38083. Lead trial piece for coin die for Henry II cross and crosslets (Tealby) penny, moneyer Turstain, mint Thetford. AD 1158–80 (G. Powell).

Tibenham. Socketted object with animal-head finial, the jaws gripping a ball or sphere. Perhaps a pin or stylus handle, shrine finial, or staff tip. C12 (P. Day).

Post-medieval (AD 1500–1950)

Aldborough. Coffee weight (2 oz) of Charles II (AD 1660–1685). (G. Meyer).

Burnham Overy 39285. PMED or MED iron slave shackle/fetter or animal hobble, probably the latter and perhaps for a horse. (S. Francis).

Carleton Rode 39434. Fragment of cast ?three-piece lamp, the upper part in the form of a satyr's head. Probably a C18/C19 copy of a classical original (Graham).

Felthorpe 33090. White metal finger ring, with oval bezel depicting silhouette of a U-boat and inscribed U-BOOT KRIEG ('U-boat war'). Probably AD 1914–18. (R. Hollingdale).

Gresham 39723. Worn silver coin, bent into a love token (J. Pooler).

Hevingham 39724. Seal matrix for cloth seal, with privy mark. An unusual and significant survival of this class of object (S. Bedder).

Hockering 36541. Silver crucifix, the hollow interior perhaps once holding a relic. Probably C19 (A. Carter).

Horsham St. Faith and Newton St. Faith 34393. Lead hollow cast mask, perhaps a toy with grotesque features (J. Minter).

Kenninghall 35131. Extraordinary ?ferrule, conical with projecting sheet strips riveted on, decorated with engraved transverse lines and curled backwards to form loops (K. Worton).

Little Massingham 25138. Gold dress fastener with glass inlay. C16 (D. Downing).

North Elmham 25848. Gold posy ring inscribed 'Rather dye then fayth denye'. Early C17 (B. George).

Sustead. Lead alloy figurine, 'pendant' figure or toy, with flattened nose, prominent headgear and in the attitude of a horse rider. ?C16/C17 (T. Crenshaw).

EXCAVATIONS AND SURVEYS IN NORFOLK 2003

edited by David Gurney and Kenneth Penn

This annual report comprises summaries of archaeological excavations, fieldwork and surveys carried out during 2003. It is often several years before post-excavation work on larger projects is completed and a full report is published, while many smaller projects are the subject of 'grey reports' for the client and the Local Planning Authority and for inclusion in the Norfolk Historic Environment Record (HER), without further publication/dissemination. These summaries therefore provide a useful guide to recent archaeological research in the county.

Acle, Mautby, Great Yarmouth and Halvergate, A47 Acle Straight (HER 39599; TG 458 088)
by Mick Boyle, Norfolk Archaeological Unit

Evaluation by field survey and trenching for Hyder Consulting (UK) Ltd recorded a low linear earthwork and other minor superimposed earthworks, all undated. A suspected mound (HER 21295) was not found, and had possibly been removed. NAU Report 858.

Ashill, The Glebe (HER 38135; TF 8846 0412)
by Edwin Rose, Norfolk Landscape Archaeology

A previously unrecorded type of C18 ice well was recorded.