

*grassy mound with a vertical frond to dexter*, above which are six openwork cusped arches within upper half of cable border (deep, fine engraving). Stoke Holy Cross 41093. Fig. 1.

48. Lead, flat, broken lug at top on reverse. Shield-shaped, 13 x 15mm. Line of five short and broad vertical lines in chief above a horned prancing devil with tail and hands outstretched. East Rudham 40787.
49. Lead, flat, broken lug at top. Circular, 21mm. Symmetrical plant motif, an elaborate and well executed fleur-de-lis. Harling 40338.
50. Copper alloy, hexagonally faceted handle with pointed pierced terminal, punched dot on reverse at top to indicate alignment. Circular, 14mm. Bird walking to sinister. Norfolk unprovenanced 40486.
51. Copper alloy signet ring, very worn, bezel and broken tapering shoulders only, most of flat-sectioned hoop missing, approx. internal dia. 20mm. Oval bezel, 16 x 13mm. Fleur-de-lis. North Walsham 40281.
52. Copper alloy, flat, non-pierced lug at one end on reverse. Pointed oval, 31 x 20mm. Non-inscribed, non-engraved, the front entirely flat. West Rudham 32133.

#### Illegible

53. Copper alloy, flat with median rib ending in pierced lug on reverse. Pointed oval, 28 x 16mm. Star over ?plant motif. · A..... (Inscription almost totally illegible through wear). Howe 30401.
54. Lead, flat, longitudinal groove on reverse. Approximately half surviving with damaged edge at top where ?lug is missing. Circular, 39mm. Elaborate quatrefoil. + SIGILL' S[.....]LEIS (Seal of ?). Watlington 31072.
55. Lead, flat. Approximately quarter surviving with small fragment of outside edge. Circular, c. 32mm (reconstructed). Cross-crosslet between four radiating crosses (reconstructed). ][?G] · W[ (most of inscription missing). Ormesby St Margaret with Scratby 37120.
56. Lead, flat. Less than half surviving with pierced lug projecting from top. Circular, c. 25–6mm (reconstructed). Incomplete unidentified central motif. + S'[.....]P (Seal of ?). Little Barningham 40242.
57. Copper alloy, flat with pierced lug at one end on reverse. Pointed oval, 28 x 17mm. Seated Virgin and Child, with kneeling tonsured supplicant below arch beneath. Inscription illegible (worn and corroded). Cawston 30455.

#### BIBLIOGRAPHY

- Blomefield, F 1806. *An Essay Towards a Topographical History of the County of Norfolk*, Vol. V, continued by C. Parkin (London)
- Corder, J. 1965. *A Dictionary of Suffolk Arms* (Suffolk)
- Greenwood, R., and Norris, M. 1976. *The Brasses of Norfolk Churches* (Woodbridge)
- Taylor, G., and Scarisbrick, D. 1978. *Finger Rings* (London)
- Reaney, P.H., and Wilson, R.M. 1991. *A Dictionary of English Surnames* (London)
- Woodcock, T., Grant, J., and Graham, I. 1996. *Dictionary of British Arms: Medieval Ordinary* Vol. 2 (London)

## ARCHAEOLOGICAL FINDS IN NORFOLK IN 2004

*edited by David Gurney*

This is a selection of important finds from an estimated total of around 17,000 objects seen and recorded by the Norfolk Museums & Archaeology Service's Identification and Recording Service for Archaeological Finds, details of which have been entered on to the Norfolk Historic Environment Record (formerly the Norfolk Sites and Monuments Record) during 2004. The Norfolk HER is maintained by Norfolk Landscape Archaeology at Gressenhall and may be consulted by appointment (tel. 01362 869281/2 or email [smr.mus@norfolk.gov.uk](mailto:smr.mus@norfolk.gov.uk)).

The NMA's Identification and Recording Service for Archaeological Finds was staffed during 2004 by Andrew Rogerson, Steven Ashley, Erica Darch (partly funded by the Department of Culture, Media and Sport's Portable Antiquities scheme) and Adrian Marsden (Department of Culture, Media and Sport's Portable Antiquities Scheme Finds Liaison Officer), and Dave Wicks (photographer).

The entries are arranged by period and, within each period, by parish alphabetically. The number after the parish name is the Norfolk HER number. Grid references have been omitted at the request of finders. Metal artefacts are of copper alloy (bronze) unless otherwise stated. Bold text indicates that an object is illustrated.

Norfolk finds are being added to the Department of Culture, Media and Sport's Portable Antiquities website at [www.finds.org.uk](http://www.finds.org.uk). Details of Middle Saxon, Late Saxon and medieval coins are submitted to the Fitzwilliam Museum's *Early Medieval Corpus, Single Finds of Coins in the British Isles, 410–1180*, which can be consulted online at [www.fitzmuseum.cam.ac.uk/coins/emc.html](http://www.fitzmuseum.cam.ac.uk/coins/emc.html). A selection of numismatic finds and seal matrices are presented elsewhere in this volume.

The assistance of colleagues in the Archaeology Department at Norwich Castle Museum and Art Gallery (John Davies, Tim Pestell, Alan West), Peter Robins (flint identifications) and colleagues in other institutions, especially the British Museum, the Fitzwilliam Museum, the Ashmolean Museum, the Museum of London, the Institute of Archaeology in Oxford and Suffolk County Council's Archaeological Service with the identification of finds is most gratefully acknowledged. Natasha Hutcheson provided reports on Iron Age finds.

The majority of the finds listed have been found in the course of fieldwalking and metal-detector survey, with many finds from the latter being reported by members of Anglian Historical Searchers, Anglian Metal Detectors, East Norfolk Metal Detectors, Norwich Metal Detectors, the West Norfolk Search and Recovery Group and by groups of American visitors ('Discovery Tours').

Norfolk Landscape Archaeology is most grateful to all those who send in reports or bring in finds (however discovered) for identification and recording, thereby contributing to the NHER and this annual list.

The illustrations are by Jason Gibbons and Sue White.

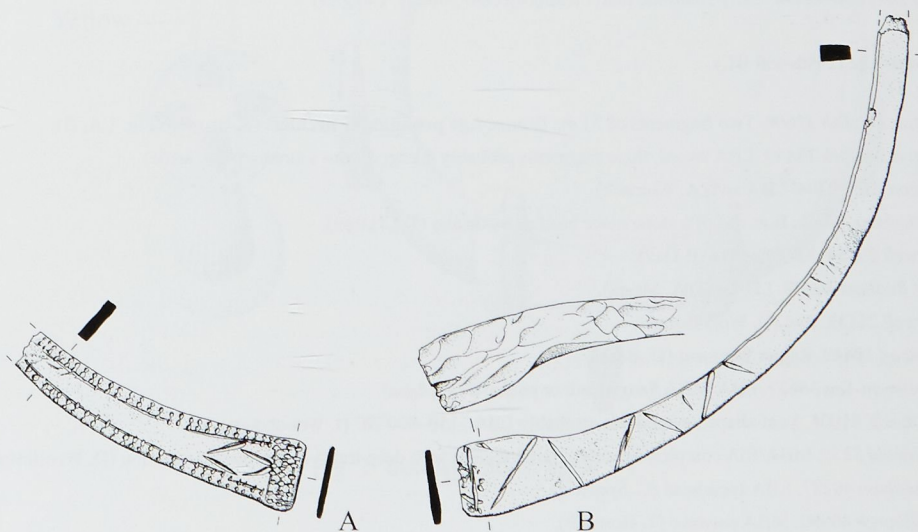


Fig. 1 Bronze Age penannular necklets. Scale 1:1

**Palaeolithic (pre-10,000 BC)**

- Happisburgh* 36532. Lower Palaeolithic handaxe found *in situ* (S. Parfitt).  
*Keswick* 39957. Lower Palaeolithic pointed handaxe (M. Addison).  
*Lessingham* 40775. Lower Palaeolithic pointed ovate handaxe, > 500,000 years BP (C. Lee).  
*Lymford* 5090. Final Upper Palaeolithic blade (E. Mallett).  
*Methwold* 5235. ?Late Palaeolithic chert ?hand axe (D. Woollestone).  
*Pentney* 40727. Lower Palaeolithic small slightly pointed ovate handaxe, 700,000–100,000 years BP (S. Mitchell).  
*Postwick* 31761. Late Upper Palaeolithic blade, c. 12,000 years BP (R. Crawford).

**Mesolithic (10,000 – 4000 BC)**

- Colkirk* 37128. Blade core (N. Abram).  
*Costessey* 30572. Two blade cores (P. Alden).  
*Felmingham* 30562. Late Mesolithic or early Neolithic tranchet axe, 6000–3000 BC (C. Thorp).  
*Northrepps* 40243. Elongated trapeze microlith, of unusual form (J. Mindham).  
*North Tuddenham* 3066. Flaked axe (M. Dorrell).  
*Oxborough* 1021. Blades (S. La Buda).  
*Postwick* 13603. Mesolithic or Early Neolithic blade (R. Crawford).  
*Scole* 40443. Blade (M. Noble).  
*Trowse with Newton* 40903. Utilised blade (J. Harrell).

**Neolithic (4000–2000 BC)**

- Feltwell* 20979. Early Neolithic sickle blade (D. Woollestone).  
*Grimston* 39964. Early Neolithic leaf arrowhead (C. Hooks).  
*Marlingford* 40893. Axe roughout (F. Hyett).  
*Marsham* 40404. Late Neolithic or Early Bronze Age rod (B. Matthewson).  
*Quidenham* 30730. Late Neolithic or Early Bronze Age adze blade or small discoidal knife (E. Crick).  
*West Dereham* 40444. Early Neolithic laurel leaf/projectile point (J. Coggles).

**Bronze Age (2000–650 BC)**

(Fig. 1)

- Barton Bendish* 17600. Two fragments of ? Late Bronze Age **penannular necklets** (S. Brown) (Fig. 1 A, B).  
*Barton Bendish* 18849. LBA sword; three fragments probably dredged from a stream (M. Carlile).  
*Bracon Ash* 30204. LBA awl (A. Womack).  
*Brettenham* 39967. Butt end of a stone mace head or battle axe (T. Claxton).  
*Bunwell* 29454. EBA flat axe (P. Day).  
*East Rudham* 40573. LBA awl (A. Mears).  
*Feltwell* 21137. Awl (D. Woollestone).  
*Kirstead* 10449. Rapier fragment (G. Bush).  
*Hopton-on-Sea* 36627. EBA/MBA flanged axe or palstave (T. Mann).  
*Mattishall* 41006. Leaf-shaped tanged axe, probably LBA 1150–800 BC (I. Woodhouse).  
*Methwold* 5235. MBA/EIA complete bracelet, round section with deep transverse groove decoration (D. Woollestone).  
*Shouldham* 40287. LBA spearhead (C. Sprowle).  
*Smallburgh* 40990. MBA palstave (T. Hornsell).  
*Sporle with Palgrave* 34520. LBA spearhead (M. Slaven).  
*Sustead* 40483. EBA dagger (R. Hollingdale).

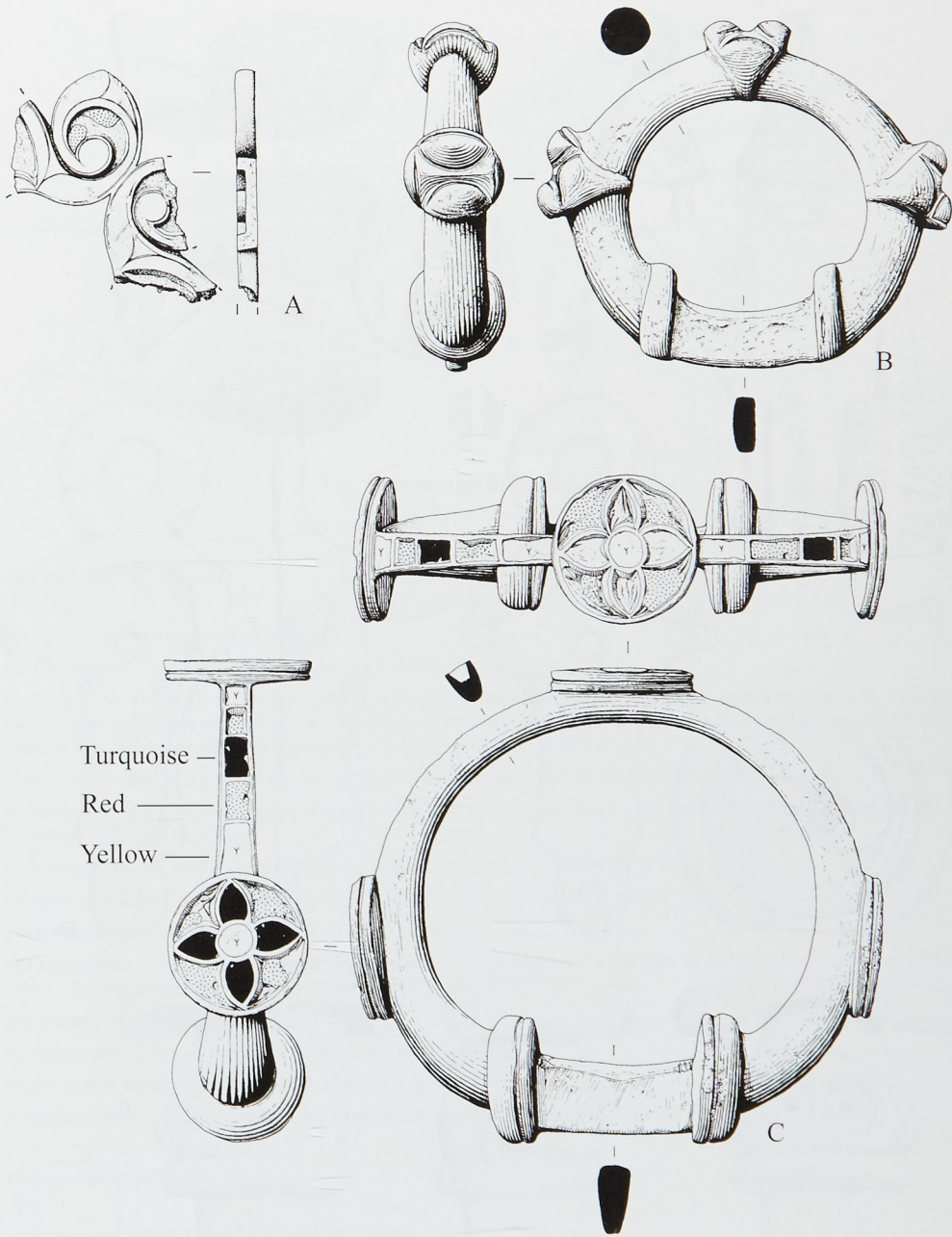


Fig. 2 Iron Age finds. Scale 1:1

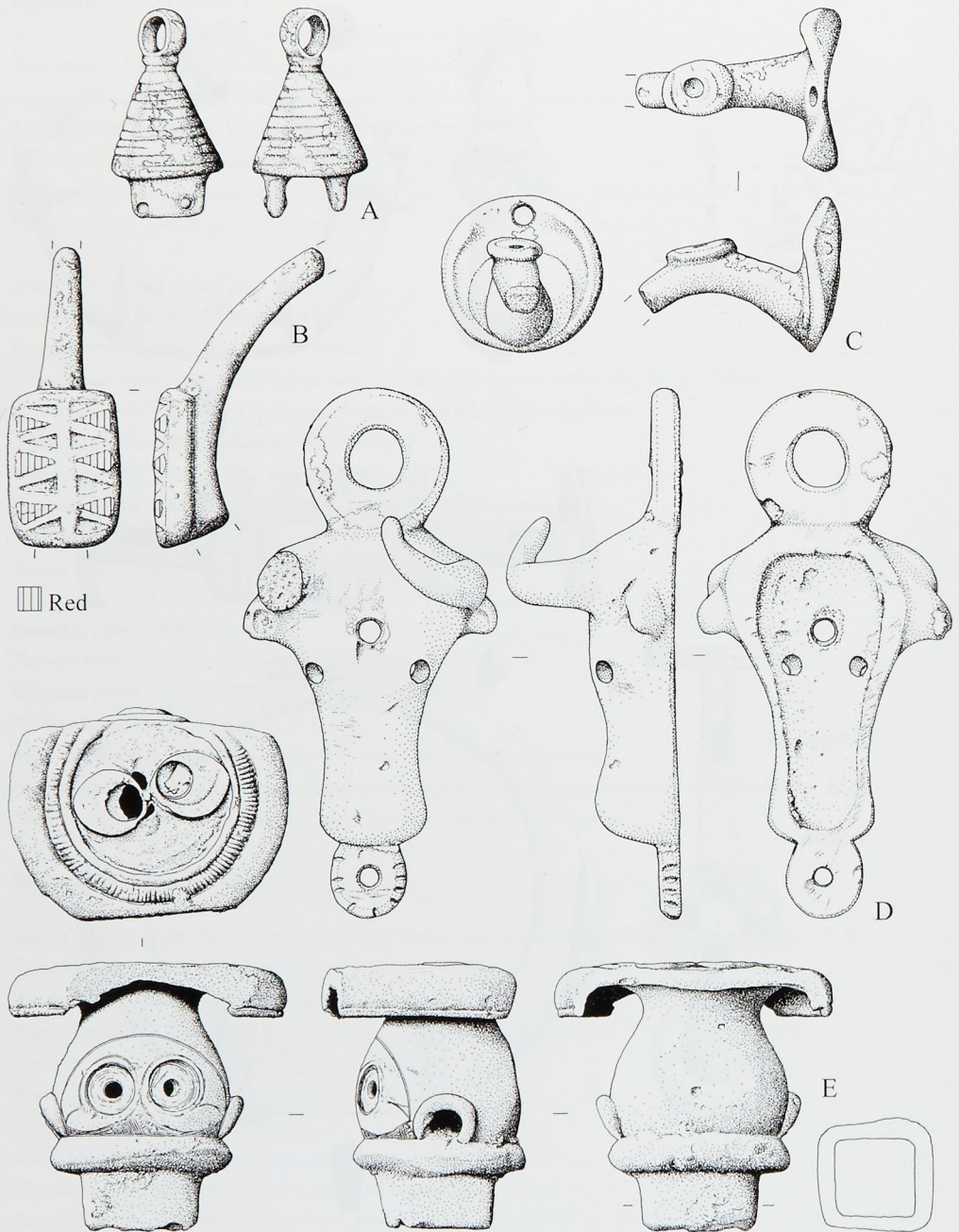


Fig. 3 Iron Age finds. Scale 1:1

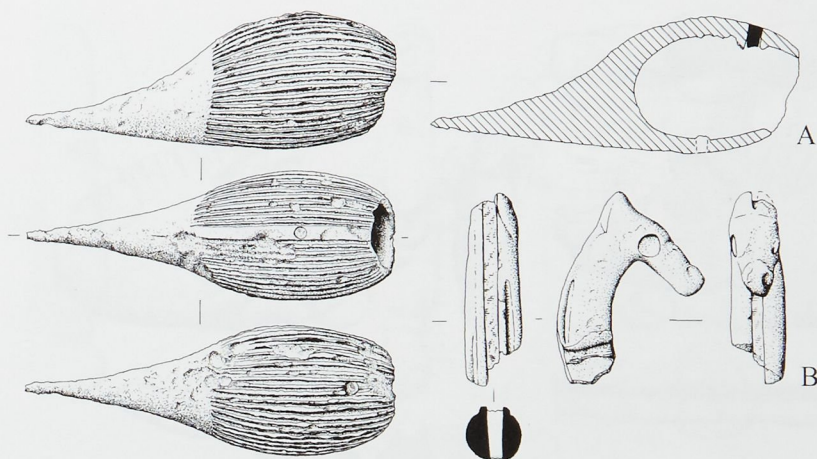


Fig. 4 Iron Age finds. Scale 1:1

#### Iron Age (650 BC–AD 43)

(Figs 2–4)

*Acle* 40570. Pottery scatter (D. Clarke).

*Barton Bendish* 17600. Birdlip brooch, early C1 AD (S. Brown).

*Carleton Rode* 39434. Hoard of three objects. 1) **harness mount or plaque** with lobed decoration (Fig. 2A). 2) three-lipped or parallel-ringed **terret** (Fig. 2B). 3) platform **terret** with three disc-like platforms decorated with multi-coloured enamels in a simple geometric flower design. C1 AD (Fig. 2C)(B. Anderson).

*Colkirk* 37301. Part of a pendant from a La Tène III **brooch**, as Hattatt 1453 (N. Abrams) (Fig. 3A).

*Erpingham* 40246. Complete toggle, shaped like the head of a hammer-head shark and with a tiny cell with red enamel. Probably C1 AD (C. Franklin).

*Holme-next-the-Sea* 36062. Platform **terret** fragment, enamelled, C1 AD (M. Carlile) (Fig. 3B).

*Marham* 29262. Bovine head **vessel fitting**, C2 BC–C1 AD (M. Coggles) (Fig. 3D).

*Narborough/Narford* 32309. Unusual La Tène II brooch, C2–1 BC (J. Coggles).

*Old Hunstanton* 1270. **Tankard handle** fragment with an oval 'platform' at the apex of the curve with a circular cell for coral or enamel. Probably C1 BC–C1 AD (J. Bocking) (Fig. 3C).

*Quidenham* 35409. Birdlip brooch (E. Crick).

*Rackheath* 40112. Top of **linch pin** (S. Merralls) (Fig. 3E).

*Ryston* 31096. **Knife/razor handle** (D. Mallett) (Fig. 4B).

*Shouldham Thorpe* 39265. 'Moustache' of uncertain function (J. Coggles) (Fig. 4A).

#### Roman (AD 43–410)

(Fig. 5)

*Ashwellthorpe* 30205. Cockerel figurine (R. Oakes).

*Barton Bendish* 17600. Gold finger ring with an openwork filigree lattice and engraved fish and ?dolphin on either side. C4 (S. Brown).

*Billingsford* 7206. Finger ring inset with blue/black glass intaglio possibly depicting Spes (Hope). C3 (J. Harrell).

*Billingsford* 7206. Iron cleaver for butchering (chopping) meat (J. Harrell).

*Brampton* 35055. Key handle with two openwork dolphins *embowed confrontée* (S. Clarkson).

*Brettenham* 41002. Five iron hobnails and a pottery scatter (D. Richardson).

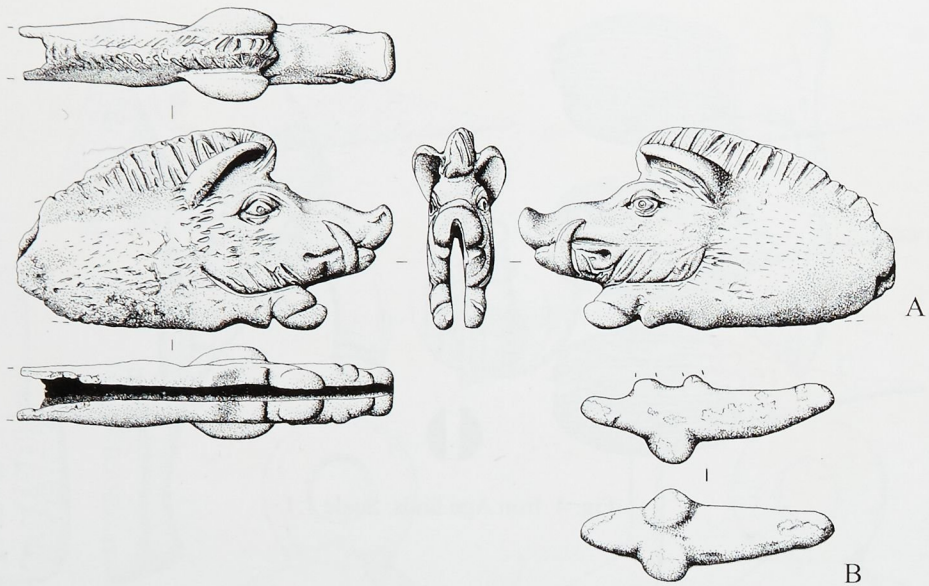


Fig. 5 Roman finds. Scale 1:1

*Burgh and Tuttington* 33592. Possible votive leaf fragment (C. Thorpe).

*Carleton Rode* 40257. Two cut coins, possibly evidence of the production of 'barbarous radiates' (P. Day).

*Ditchingham* 22255. **Folding knife handle** in the form of a charging boar (associated with hunting, war and Legio XX). C1-2 (F. Crickmore) (Fig. 5A).

*Hockwold cum Wilton* 12716. A pair of tweezers of highly unusual form, with arms which narrow then flare out before turning outwards and then inwards to the blades, and decorated with punched ovoid dots (D. Woollestone).

*Lynford* 40854. Duck brooch, enamelled (M. Barker).

*Marsham* 39717. **Phallic pendant** (A. Matthewson) (Fig. 5B).

*Merton* 40116. Votive axehead (S. Driscoll).

*Newton Flotman* 40445. Ram figurine, perhaps associated with Mercury (B. Aspinall).

*North Creake* 40442. Cast bird mount with hollow splayed wings on a hollowed three-way base, perhaps attached to a convex surface (C. Baker).

*Northrepps* 40663. Toilet implement with loop, baluster moulding and circular pointed shaft, C1/2 (O. Bing). Stylus fragment, C1-C2 (J. Blackburn).

*Quidenham* 35174. Ring-key, possibly C4-early C5 (K. Littlechild).

*Shernborne* 31666. Spring bow brooch of highly unusual form; Dolphin-type rings, rear hook, the bow a round hollow-backed boss with an engraved triangle and fantail-like foot. Similar to Hattatt 1275, late C1-early C2 (J. Burke).

*Sporle with Palgrave* 34520. Protected loop terret, late C1 (M. Slaven).

*Sporle with Palgrave* 34520. Tinned/silvered amphora-shaped strap-end; late C4 military (M. Slaven).

*Swardeston* 39785. Lathe-turned bowl, upturned over a group of iron objects including knives, nails and a clamp or staple (A. Barnett).

*Thorpe St. Andrew* 40273. Key handle in the form of a squatting monkey (unknown).

*Tuttington* 40901. Handle from folding razor, the openwork dog seizing hare missing. C3-4 (C. Thorpe).

*Yelverton* 33109. Silver finger ring with snake-head terminal. C2 AD (A. Green).

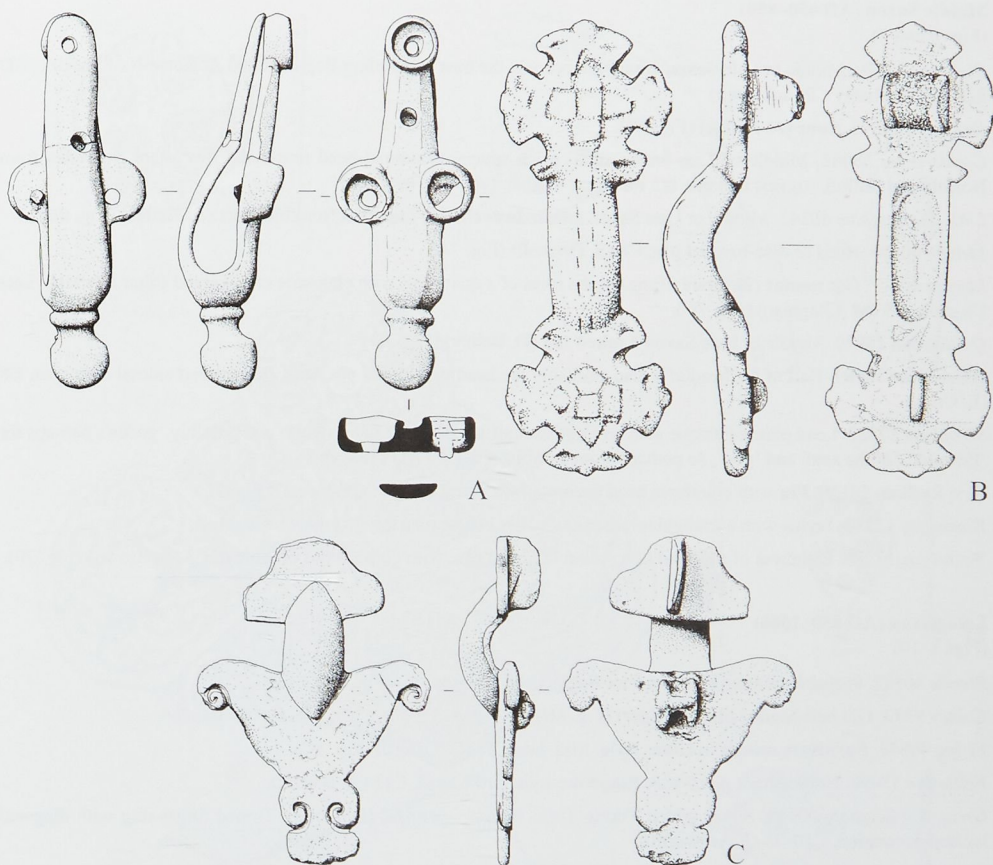


Fig. 6 Early and Middle Saxon finds. Scale 1:1

#### Early Saxon (AD 410–650)

(Fig. 6)

*Binham* 40776. Gold type 'B' bracteate, with repoussé decoration of a sword-wielding helmeted male figure in contact with a beak-headed quadruped (D. O'Neill).

*Burnham Thorpe*. 32340. **Sword-scabard chape**, C5/6 (S. Tuck) (Fig. 6A).

*Caistor St Edmund* 31653. Gilt jewelled disc brooch, with beaded border and cells with shell and decayed settings. Mid-late C6 (J. Harrell).

*East Rudham* 40547. Pyramid-shaped mount from sword belt, the cells with gold foil underlays and garnet or glass inlays. Early C7 (B. Mears).

*Merton* 40117. Headplate and bow of **long brooch**, probably C6 and with continental connections (S. Driscoll) (Fig. 6C).

*Runhall* 40897. Pendant, made from a gold *solidus* of Honorius (R. Jenkins).

*Sedgeford* 39892. Gold plated silver continental imitation of pseudo-imperial coinage, C5–6, probably Merovingian, pierced for suspension (K. Brock).

*Wormegay* 17286. Pottery vessel sherd, with stamped decoration of a creature with lentoid head, large round eye and wavy tail, perhaps a tadpole, eel, or *wyrm* as in the placename (S. Brown).



**Middle Saxon (AD 650–850)**

(Figs 6 and 7)

*Blakeney* 33820. Middle or Late Saxon nummular brooch, the bust resembling Ecgberht and Aethelwulf of Wessex (AD 828–43). Probably C9 (unknown).

*Deopham* 29875. **Spur** (A. Kedge) (Fig. 7B).

*Gooderstone* 36082. Middle or Late Saxon small prick spur with animal-head terminals; four other examples from Norfolk and Suffolk suggest that this is a rare East Anglian type (B. Hamilton).

*Little Barningham* 40242. Middle or Late Saxon **ansate brooch**, C9, imported from Flanders (A. Kedge) (Fig. 6B).

*Merton* 40116. Head of **disc-headed pin**, C8 (S. Driscoll) (Fig. 7A).

*Merton* 40117. Gilt **mount** (furniture fitting) in the form of a quatrefoil with elaborate chip-carved foliar interlace. Late C8–early C9 (M. Chapman) (Fig. 7C).

*Quidenham* 24050. Middle or Late Saxon **hooked tag** (D. Bailey) (Fig. 7D).

*Quidenham* 35409. Half of the head of a disc, probably the head of a linked pin, with chip-carved animal ornament, C8 (E. Crick).

*Shropham* 17722. Lead plate or plaque with an English runic text, 'ward', 'des[s]aule' and possibly 'godes'; perhaps for 'Edward', 'of the soul' and 'god', so perhaps from a coffin. C8–C10 AD (T. Marsh).

*West Rudham* 28130. **Pin** with cruciform head decorated with ring-and-dot (B. Mears) (Fig. 7E).

*Wormegay* 17286. Stylus with a triangular eraser and collar bands; possibly Roman (J. Coggles).

*Wormegay* 17286. Fragment of the head of a probable linked **pin**, with chip-carved ornament. C8 (S. Brown) (Fig. 7F).

**Late Saxon (AD 850–1066)**

(Figs 8–10)

*Brooke* 40522. Probable **penannular bracelet** fragment (S. Dunthorne) (Fig. 8A).

*Colney* 9332. Gilt ball-headed **pin** (D. Alger) (Fig. 8B).

*Elsing* 40644. **Furniture mount** in Urnes style. Mid–late C11 (G. Orford) (Fig. 8C).

*Felthorpe* 33090. Bridle cheek piece with Ringerike style bird's head, C11 (A. Barrett).

*Great Witchingham* 40668. Silver gilded Viking Thors hammer pendant (K. Cote). Tinned finger-ring with diagonal incised decoration, C10–11 (P. Ashworth).

*Heacham* 37217. **Strap end**, of unusual form (S. Brown) (Fig. 8E).

*Heckingham* 22666. Possible silver ingot, 5.59g (K. Woodhouse).

*Hedenham* 40305. **Strap-end**, C11 (S. Dunthorne) (Fig. 8D).

*Horning* 34464. Scandinavian strike-a-light handle in the form of two horses and riders. Only the second example from this country (the other is from Postwick), with parallels in Russia and Finland. Late C9–10 (W. Brinded).

*Kelling* 29807. **Stirrup-strap mount**, unusual in that the animal has arms. C11 (G. Abel) (Fig. 8F).

*Kenninghall/Quidenham* 32254. Fragment of gilt **harness fitting** (K. Littlechild) (Fig. 8G).

*Keswick* 32108. Incomplete ingot of flattened, rounded triangular section. Probably a 25/26g unit like other Viking examples (J. Harrell).

*Long Stratton* 16111. Fragment of trefoil **brooch or strap-end** terminal, with Borre-style animal head in high relief. Probably Scandinavian, late C9–C10 (P. Thrower) (Fig. 9A).

*Mautby* 37426. Urnes-style **mount**, C11 (P. George) (Fig. 9B).

*Merton* 38055. Cloisonné enamel **disc brooch**, late C10–C11 (H. Hines) (Fig. 9C).

*North Walsham* 40666. Lock plate, C10–11 (R. Baker). Stirrup terminal in the form of a beast's head, C10–11 (C. Sparks).

*Ormesby St Margaret* 24047. Probable integral plate for stirrup, and perhaps only the second example to be found in Britain. C11 (A. Jarrett).

*Quidenham* 24050. Convex **disc brooch**, a mix of Borre and Jellinge styles. Probably Scandinavian C10 (Fig. 9D).

*Quidenham* 31678. Cloisonné enamel gilt **disc brooch** with seven lobes, each originally with a glass sphere. Late C10/11 (E. Crick) (Fig. 9E).

*Quidenham* 37284. **Strap fitting** in the form of a building's gable end, with ring-and-dot decoration (E. Crick/K. Littlechild) (Fig. 9F).

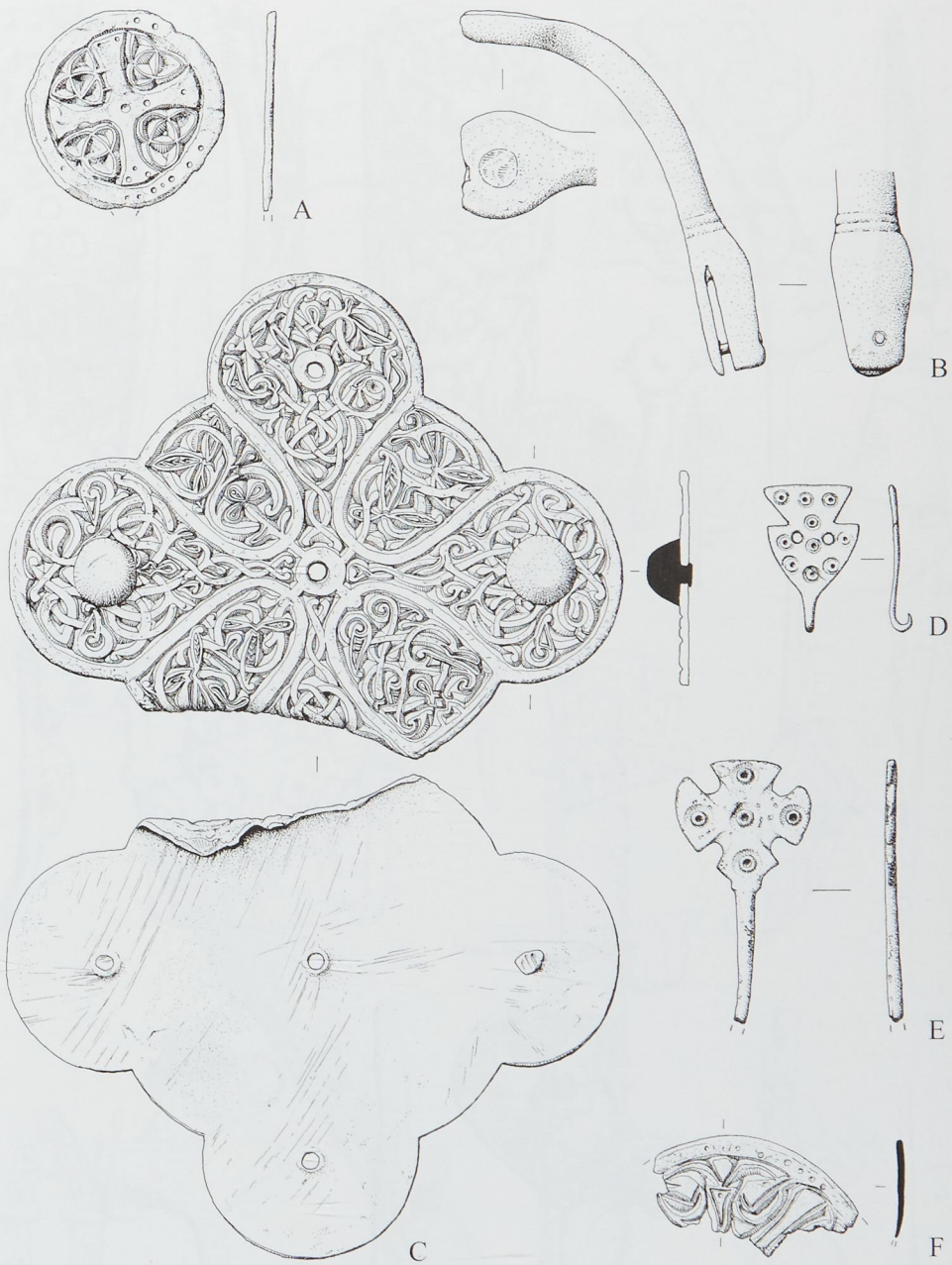


Fig. 7 Middle Saxon finds. Scale 1:1



Fig. 8 Late Saxon finds. Scale 1:1

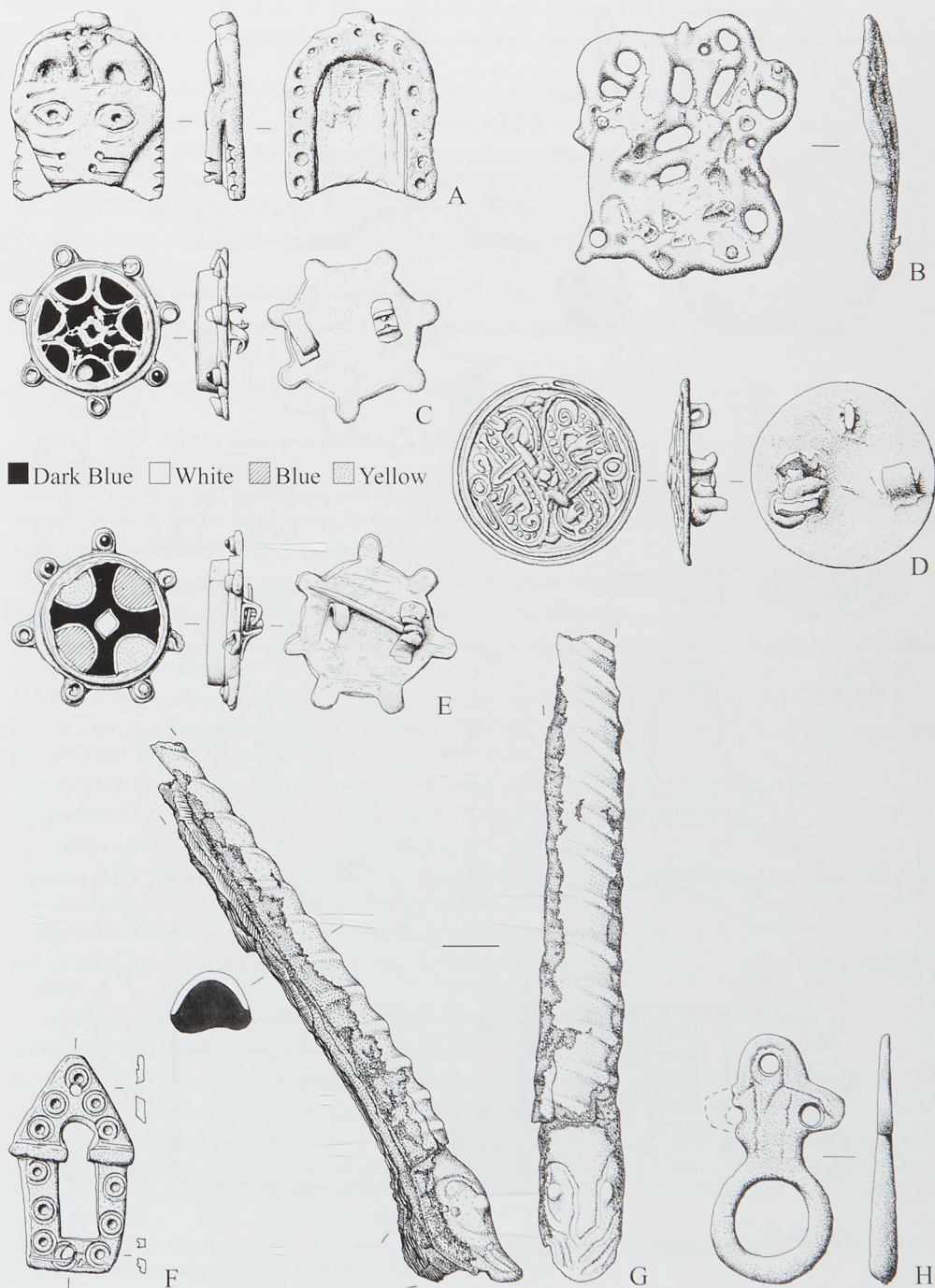


Fig. 9 Late Saxon finds. Scale 1:1

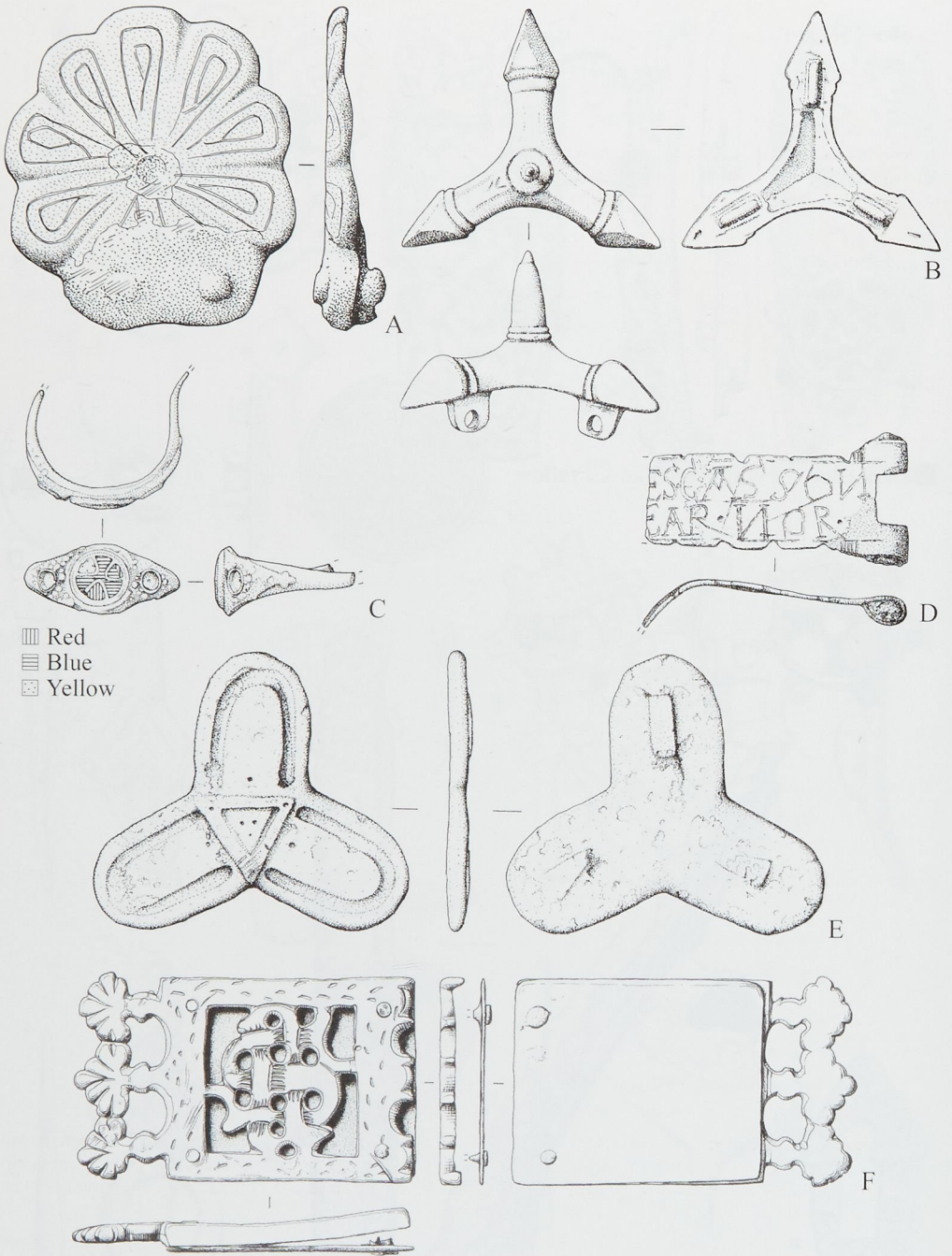


Fig. 10 Medieval finds. Scale 1:1

- Shipdham* 40788. **Stirrup terminal** and sheath containing side of iron stirrup, C11 (B. Dodgson) (Fig. 9G).
- Shotesham* 40000. Fragment of a silver penny, re-used as jewellery or an ornament/mount/badge/brooch. C10/early C11 (M. Turner).
- Somerton* 31345. Nine-petalled flower-shaped stirrup-strap mount, C11 (S. Whymark) (Fig. 10A).
- Sporle with Palgrave* 1058. Silver ingot of rectangular section 2.61g, so around 1/10th of 25/26g (M. Slaven).
- Upton with Fishley* 29671. **Belt or strap mount** with debased Ringerike-style engraving. Eleven similar examples are known, from Denmark (eight), Norway (one) and England (two). C11/early C12 (B. Sharrock) (Fig. 9H).
- West Dereham* 37525. Gold Viking type ingot, ovoid section, 58.26g (M. Webb).
- Whissonsett* 31800. **Suspension unit** from ?censer. Gilt **finger ring**, with cloisonné enamel. Late C10–C11 (G. Linton) (Fig. 10 B and C).
- Wymondham* 40446. Trefoil ?**harness fitting** (M. Turner) (Fig. 10E).
- Yelverton* 33109. Ingot, trapezoidal bar with a flattened rectangular section, 14.50g (A. Green).

### Medieval (AD 1066–1500)

(Figs 10 and 11)

- Bawburgh* 20659. **Casket hasp** inscribed JES.CASSON/JEAR.NOR. (*Casson* = Latin *cassa* for case or box) (S. Maloney) (Fig. 10D).
- Beachamwell* 34533. Lead pilgrim badge with openwork cloth bearing an image of the head of Christ, a souvenir of the Veronica (the cloth used by Christ to wipe his face on the way to Calvary). Probably C13–C14 (J. Coggles).
- Blo Norton* 21119. Mercury flask (A. Aves).
- Bracon Ash* 30204. English jetton (c. 1280–1343) converted into a brooch (A. Womack).
- East Rudham* 30841. Lead stylus, of Winchester Class III (C13–15) (B. Mears).
- Corpusty* 32872. Gilt and enamelled cap from wand or pointer decorated with a gilt-winged quadruped. Probably Limoges and C12 (P. Dawson).
- East Rinton* 40476. Silver finger ring with inscription BALTASAR+CASPER+MELCHIOR. C15 (C. Gibbons).
- Emmeth* 19631. Lead papal bulla of Innocent III (AD 1198–1216) in excellent condition, the detail suggesting that a number of seal dies may have been in use by this pope (M. Carlile).
- Emmeth* 39308. Very elaborate two-part **strap-end**, with openwork monogram SA (M. Carlile) (Fig. 10F).
- Harling* 40963. Lead Byzantine seal with Greek lettering. C12 (A. Parr).
- Howe* 40301. Incomplete figure of Christ from a crucifix, C13–14 (S. Dunthorne).
- Marsham* 39717. Cast **vessel** with oval body, two looped handles and two inscribed crosses. Probably from a travelling Chrismatory (set of three holy oils). C12 (A. Matthewson) (Fig. 11A).
- Mautby* 39962. Unusual mirror case, the circular discs with lugs acting as a catch (T. Stamp).
- Merton* 40117. Monumental brass fragment, from the brass of William de Grey (1495) in Merton church (8945) (S. Driscoll).
- North Walsham* 40666. Nummular brooch, gilded, based on a penny of Harold II. AD 1066 (M. Martin).
- Norwich* 36200. Enamelled Limoges casket mount, late C12 (W. White).
- Quidenham* 39287. Enamelled saint figurine, probably from a casket. A Limoges product, early C13 (E. Crick).
- Ryston* 40984. **Strap-end**, with knob of unusual form (D. Mallett) (Fig. 11B).
- Shotesham* 39266. A late medieval portable horological device, in the form of a flat disc divided into four quarters with numbers and letters for cardinal points and subdivisions and hours. It has a handle and removable gnomon (missing). Despite the markings this item makes little sense as either a sundial or nocturnal, and it remains largely mysterious. Late C14 (P. Aspinall).
- Strumpshaw* 40908. Lead papal bulla of Innocent VI (1352–62), with curious deliberate ancient scarring/defacement and pierced for attachment/suspension (D. Howes).
- Sustead* 39535. Circular **mount** from the centre of the base of a bowl or *mazer* (drinking vessel), depicting the winged lion of St Mark with an illegible inscription. C14–15 (G. Abel) (Fig. 11C).
- Wickmere* 28523. A silver *gros tournois* coin of Henry VII, Count of Luxemburg 1288–1309, converted for use as a brooch (E. Snyder).

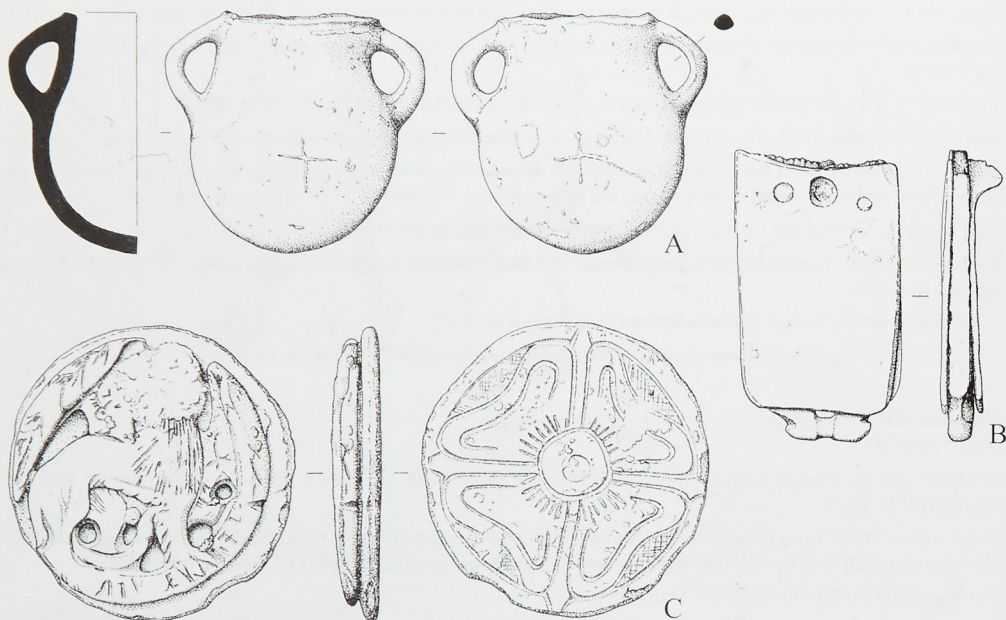


Fig. 11 Medieval finds. Scale 1:1

#### Post-medieval (AD 1500–1950)

*Beetley/Stanfield* 30600. ?Weight in the form of a miniature grimacing human mask (K. Dickerson).

*Brancaaster* 40539. Silver-plated contemporary imitation of a halfcrown of Charles I (1625–49) (S. Hammond).

*Colkirk* 37130. A lead disc with the impression of a jetton (J. Gibbons).

*Costessey* 40424. A scatter of 30 lead musket balls (G. James).

*Diss* 40872. Iron key found bricked up in a fireplace (G. Woollard).

*Emneth* 40567. Handle for a knife or tool in the form of a snake's or dragon's head and decorated with ring-and-dot motif. Similar objects have been suggested as Late Saxon (M. Carlile).

*Hevingham* 40679. Lead kosher meat seal with Hebrew inscription. C17–18 (S. Bedder).

*Hevingham* 40545. Gold posy ring, inscribed 'I LOVE TO FYNDE' and 'A CONSTANT MINDE'. Probably C16–17 (K. Underdown).

*Mattishall* 19307. Toy musket, C17 (A. Carter).

*Mattishall* 40852. Late C17–early C18 gun flint in a lead sleeve, perhaps to secure it in use (K. Brock).

*Postwick* 31087. Toy musket, C17 (D. Parker).

*Quidenham* 39287. Lead toy figure of Sir Francis Drake playing bowls (E. Crick).

*Shotesham* 40847. Incomplete mount with relief inscription 'SEEK FOR PEAC[E]'. C19 (M. Turner).

#### Undated

*Brisley* 39991. Gold bar or ingot (R. Davies).

*Runton* 39994. Stone saddle quern, unusual triangular form and perhaps Egyptian (M. Dowding).