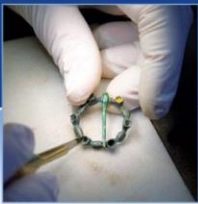


Divethill Farm, Capheaton, Newcastle-upon-Tyne, Northumberland Historic Building Recording Report

AOC Project: 24982

30th March 2020



ARCHAEOLOGY

HERITAGE

CONSERVATION

Divethill Farm, Capheaton, Newcastle-upon-Tyne, Northumberland: Historic Building Recording Report

On Behalf of:	Cemex UK 2 Kilmartin Place Tannochside Place Uddingston Glasgow G71 5PH
National Grid Reference	NY 98016 78993
(NGR): AOC Project No:	24982
Planning Application No:	17/04633/VARCCM
OASIS No:	aocarcha1-390413
Prepared by:	Diana Sproat Jamie Humble
Date of Report:	30 th March 2020

This document has been prepared in accordance with AOC standard operating procedures.

Author: Diana Sproat	Date: 30th March 2020
Approved by: Graeme Cavers	Date: 30th March 2020
Draft/Final Report Stage: Draft	Date: 30th March 2020

Enquiries to: AOC Archaeology Group
Edgefield Industrial Estate
Edgefield Road
Loanhead
EH20 9SY

Tel. 0131 440 3593
Fax. 0131 440 3422
e-mail. admin@aocarchaeology.com

Contents

	Page
List of Figures.....	iv
List of Plates.....	iv
List of Appendices.....	v
<i>Summary</i>	1
1 INTRODUCTION	2
1.1 Project Background	2
1.2 Site Location	2
2 OBJECTIVES	2
3 METHODOLOGY	2
4 HISTORICAL BACKGROUND	3
5 RESULTS.....	6
5.1 Building A: Cottage	6
5.2 Building B: Barn	7
6 DISCUSSION.....	10
7 CONCLUSIONS	10
8 REFERENCES	11
7.2 Cartographic references	11
APPENDIX 1: DIGITAL PHOTOGRAPHIC RECORD	12

List of Figures

- Figure 1: Site Location plan
 Figure 2: Site Plan showing the outline of the development area
 Figure 3: Extract from Ordnance Survey map, 1866
 Figure 4: Extract from Ordnance Survey map, 1895
 Figure 5: Extract from Ordnance Survey map, 1922

- Figure 6: Extract from Ordnance Survey map, 1951
 Figure 7: Topographic site plan of Buildings A (Cottage) and B (Barn)
 Figure 8: Building A (Cottage), Ground Floor Plan
 Figure 9: Building B (Barn), Ground Floor Plan

List of Plates

- Plate 1 (08): Building A (Cottage), general view from the south
 Plate 2 (11): Building A (Cottage), general view from the WSW
 Plate 3 (06): Building A (Cottage), general view of the south-east elevation from the SSE
 Plate 4 (09): Building A (Cottage), general view of the south-east elevation from the south
 Plate 5 (07): Building A (Cottage), detail of the main entrance in the centre of the south-east elevation, from the south-east
 Plate 6 (01): Building A (Cottage), general view of the north-west elevation from the north-west
 Plate 7 (02): Building A (Cottage), detail of the back door and adjacent window in the north-west elevation, from the north-west
 Plate 8 (03): Building A (Cottage), detail of the north-east facing side of the small brick lean-to addition in front of the north-west elevation, from the north-east
 Plate 9 (04): Building A (Cottage), general view of the north-east elevation, from the north-east
 Plate 10 (05): Building A (Cottage), detail of the sash window in the north-west side of the north-east elevation, from the north-east
 Plate 11 (13): Building A (Cottage), general view of the south-west elevation from the south-west
 Plate 12 (10): Building A (Cottage), general view of the south-west elevation (original cottage), from the south-west
 Plate 13 (12): Building A (Cottage), detail of the south-east elevation of the extension to the west side of the original cottage, from the south-east
 Plate 14 (14): Building A (Cottage), general view of Room A1a from the north-west
 Plate 15 (15): Building A (Cottage), detail of central doorway between Rooms A1a and A1b, from the south-east
 Plate 16 (16): Building A (Cottage), detail of central doorway between Rooms A1a and A1b, from the north-west
 Plate 17 (18): Building A (Cottage), detail of doorway in Room A1a leading into Room A5 (now no longer in use and nailed shut), from the north-east
 Plate 18 (17): Building A (Cottage), detail of the door in the north-east side of corridor A1b (through to the back passage, Room A8a), from the south-east
 Plate 19 (19): Building A (Cottage), general view of Room A2 from the west
 Plate 20 (20): Building A (Cottage), general view of Room A3 from the south-west
 Plate 21 (21): Building A (Cottage), general view of Room A4 from the WSW
 Plate 22 (23): Building A (Cottage), general view of the south-west elevation of Room A5, from the NNW
 Plate 23 (22): Building A (Cottage), detail of the window in the south-west elevation of Room A5, from the east
 Plate 24 (24): Building A (Cottage), general view of the south-west elevation of Room A6, from the north-east
 Plate 25 (25): Building A (Cottage), detail of window in the south-east elevation of Room A7, from the north
 Plate 26 (27): Building A (Cottage), general view of Room A8a looking into side cupboard, A8b, from the north-east
 Plate 27 (26): Building A (Cottage), detail of window in the north-west elevation of Room A8a, from the south-east
 Plate 28 (28): Building A (Cottage), general view of Room A9, coal shed/log store, showing the blocked rear window, from the north-east
 Plate 29 (29): Building B (Barn), general view from the east
 Plate 30 (30): Building B (Barn), general view of the north-east side of the south-east elevation, from the south-east
 Plate 31 (31): Building B (Barn), detail of the entrance into Barn B1 and the adjacent slit window in the north-east end of the south-east elevation, from the south-east
 Plate 32 (32): Building B (Barn), detail of the door through to Barn B2 and the adjacent window and slit window in the north-east side of the south-east elevation, from the south-east
 Plate 33 (33): Building B (Barn), general view of the south-west side of the south-east elevation, from the east
 Plate 34 (34): Building B (Barn), detail of the window in the south-west end of the south-east elevation, from the east
 Plate 35 (37): Building B (Barn), general view from the north
 Plate 36 (38): Building B (Barn), general view of the north-west elevation from the north
 Plate 37 (39): Building B (Barn), general view of the north-east side of the north-west elevation, from the north-west
 Plate 38 (40): Building B (Barn), detail of the easternmost slit window in the north-east side of the north-west elevation, from the north-east
 Plate 39 (41): Building B (Barn), detail of the inserted window of Barn B2 in the north-east side of the north-west elevation, from the north-east
 Plate 40 (42): Building B (Barn), detail of window of Barn B3 in the centre of the north-west elevation, from the north-west
 Plate 41 (43): Building B (Barn), general view of the south-west side of the north-west elevation showing the inserted windows in Barn B4, from the north-west
 Plate 42 (44): Building B (Barn), detail of the inserted windows in Barn B4, from the north-west
 Plate 43 (45): Building B (Barn), general view of the south-west end of the north-west elevation, from the north
 Plate 44 (46): Building B (Barn), general view of the north-west elevation of Barn B5, from the north
 Plate 45 (35): Building B (Barn), general view of the north-east gable, from the north-east
 Plate 46 (36): Building B (Barn), detail of the boarded window in the north-east gable, from the north-east
 Plate 47 (48): Building B (Barn), general view of the south-west end of the barn, from the south
 Plate 48 (47): Building B (Barn), general view of the south-west gable, from the south
 Plate 49 (54): Building B (Barn), Barn B1, general view showing the doorway in the south-east elevation, from the east
 Plate 50 (49): Building B (Barn), Barn B1, general view showing the boarded window in the north-east elevation, from the south
 Plate 51 (53): Building B (Barn), Barn B1, detail of the small opening in the centre of the south-west elevation, from the north-east

Plate 52 (52): Barn B1, Building B (Barn), detail of the timber partition for the animal pen, from the south-east

Plate 53 (50): Barn B1, Building B (Barn), general view of the timber roof truss from the south

Plate 54 (51): Barn B1, Building B (Barn), detail of the rafter of the timber roof truss resting over the north-west wall and showing the bolting of the tie beam, from the south

Plate 55 (58): Barn B2, Building B (Barn), general view of the south-west side of the south-east elevation showing the low timber and slit window (to the right) and the main doorway (to the left), from the north-west

Plate 56 (55): Building B (Barn), Barn B2, detail of inserted window in the north-west elevation, from the south-east

Plate 57 (57): Building B (Barn), Barn B2, detail of the north-east side of the south-east elevation showing the slit window and low timber, from the WNW

Plate 58 (56): Building B (Barn), Barn B2, detail of low timber in the north-east side of the room, from the south

Plate 59 (59): Building B (Barn), Barn B2, general view of the north-east timber roof truss from the west

Plate 60 (65): Building B (Barn), Barn B2, general view of the north-east timber roof truss from the WNW

Plate 61 (66): Building B (Barn), Barn B2, general view of the north-east timber roof truss from the SSW

Plate 62 (60): Building B (Barn), Barn B2, detail of the bolt fastening the king post and tie beam in the north-east timber roof truss, from the south-west

Plate 63 (62): Building B (Barn), Barn B2, detail of the top of the north-east roof truss showing the king post bolted to the rafters, from the south-west

Plate 64 (61): Building B (Barn), Barn B2, detail of the rafter of the north-east timber roof truss as it sits over the south-east wallhead, from the west

Plate 65 (63): Building B (Barn), Barn B2, detail of rafter of the north-east timber roof truss resting over the north-west wallhead, from the south-west

Plate 66 (64): Building B (Barn), Barn B2, detail of the strut slotted into the rafter of the north-east timber roof truss on north-west side, from the south-west

Plate 67 (67): Building B (Barn), Barn B3, general view from the north-east

Plate 68 (68): Building B (Barn), Barn B3, general view from the south-west

Plate 69 (69): Building B (Barn), Barn B4, general view from the north-east

Plate 70 (72): Building B (Barn), Barn B4, detail of the north corner showing the rubble-blocked opening (left) and the doorway through to Barn B3 (right), from the south

Plate 71 (71): Building B (Barn), Barn B4, detail of the inserted openings in the north-west wall, from the SSE

Plate 72 (70): Building B (Barn), Barn B4, detail of the window in the south-east elevation, from the north-west

Plate 73 (73): Building B (Barn), Barn B4, detail of the north-east timber roof truss from the WSW

Plate 74 (76): Building B (Barn), Barn B5, detail of the doorway (and upper opening) in the north-east elevation, from the west

Plate 75 (75): Building B (Barn), Barn B5, detail of the window in the south-east elevation, from the north-west

Plate 76 (74): Building B (Barn), Barn B5, detail of the tiny inserted opening in the north-west elevation, from the south-east

Plate 77 (77): Building B (Barn), general view of the south-west elevation from the NNE

Plate 78 (78): Building B (Barn), detail of the base of the south-west elevation, from the NNE

List of Appendices

Appendix 1: Digital Photographic Record

Summary

AOC Archaeology Group was commissioned by Cemex UK to undertake an historic building survey of two former farm buildings, a cottage and a barn, at Divethill Quarry near Capheaton in Northumberland. The works were completed in advance of the demolition of the buildings for quarry working.

Northumberland is a rural county and retains a number of farm and agricultural buildings, including examples of 'model' farms and rural farmsteads which developed over many centuries of use. These types of buildings are, however, now surplus to requirements given the changes in agricultural practices employed since the mid-late 20th century, which has steered away from the courtyarded farmsteads and now relies more heavily on larger steel shed construction. As such, many late 18th and 19th century farmsteads are now abandoned and left empty awaiting new use, or - in many cases - demolition for new development or industry, such is the case at Divethill.

There were two remaining buildings relating to Divethill Farm at the time of survey. A linear barn to the west side was probably constructed in the early-mid 19th century and is depicted on the First Edition Ordnance Survey map of 1866. The farmhouse – or 'cottage' – was built later between 1895 and 1922 as a single-storey dwelling with a south-east facing façade. This was later appropriated by the quarry with some of the rooms used as laboratories and offices, which necessitated the construction of a single-roomed extension in the west corner and the addition of a large water tank. The single-storey barn was subdivided into three distinct units, the roof levels rising to the south-west taking in the natural slope of the ground, and appears to have been used as a range of cow byres. The roof was supported by a number of king post roof trusses, crudely bolted together, which had been replaced in one of the barns by a more modern saw-cut king post truss.

No further historic building survey is recommended on the site prior to development, although this will need to be confirmed in writing by the Northumberland County Council. The need for further works, including the archaeological monitoring of the demolition and other ground reduction works, has been discussed with the Northumberland County Council Conservation Team who have confirmed that this is not necessary for this project.

1 INTRODUCTION

1.1 Project Background

1.1.1 AOC Archaeology Group was commissioned by Cemex UK to undertake an historic building survey of two former farm buildings – a cottage and a barn – at Divethill Quarry near Capheaton in Northumberland. The works have been completed as part of the planning consent (Planning Ref: 17/04633/VARCCM). The extent of the works was defined by the Northumberland County Council (NCC) and was undertaken in accordance with the principles as set out in the ClfA Standard and *Guidance for the Archaeological Investigation and Recording of Standing Buildings and Structures* (2019).

1.1.2 The development will see the demolition of the buildings in advance of quarry works.

1.2 Site Location

1.2.1 The site is located within Divet Hill Quarry which is situated between and to the west of Great Bavington (to the north) and Little Bavington (to the south) near Capheaton in Northumberland. The site consists of a former single-storey cottage and an adjacent barn and is centred on NY 98016 78993 (Figures 1 & 2).

2 OBJECTIVES

2.1 The objective of the historic building recording survey was to create a ‘preservation by record’ of the buildings through photographic, written and drawn record to include within the local Northumberland County Council Historic Environment Record (HER).

3 METHODOLOGY

3.1 A Level 2 historic building survey was required by the Northumberland County Council of the farmhouse and farm buildings prior to development, which included a photographic, written and drawn record. The works adhered to the guidelines set out in the Historic England publication *Understanding Historic Buildings: A Guide to Good Recording Practice* (2016) and the Northumberland County Council (NCC) Conservation Team *Brief for Recording Historic Farm Buildings*. Both the exterior and interior of the buildings were examined, described and photographed.

3.2 A general and detailed photographic survey was undertaken of the buildings using a digital SLR in both .jpg and .raw format. General views of the elevations (both head on and oblique) were made in addition to detailed shots of specific features or examples of features. The buildings were also photographed in their setting from a number of vantage points. Internally, all rooms and spaces received one or more general photographs, with additional detail shots of features such as doorways, windows, blocked openings, structural detail, changes in construction and anything else pertinent to the historic record. A running register of photographs was made on site and included as an appendix to the report, together with a site plan and floor plans of the buildings showing the position and direction of each photograph. All photographs taken have been used as plates to illustrate this report, and these are also referenced in the photo location plans.

3.3 The photographic record was supported by a written account of the buildings using AOC *pro-forma* Exterior and Room Data recording sheets to form the basis of the architectural appraisal of the buildings for this report. Comment was made on condition, construction, architectural detail, structural detail, evidence for phasing and function and any other features pertinent to the historical record.

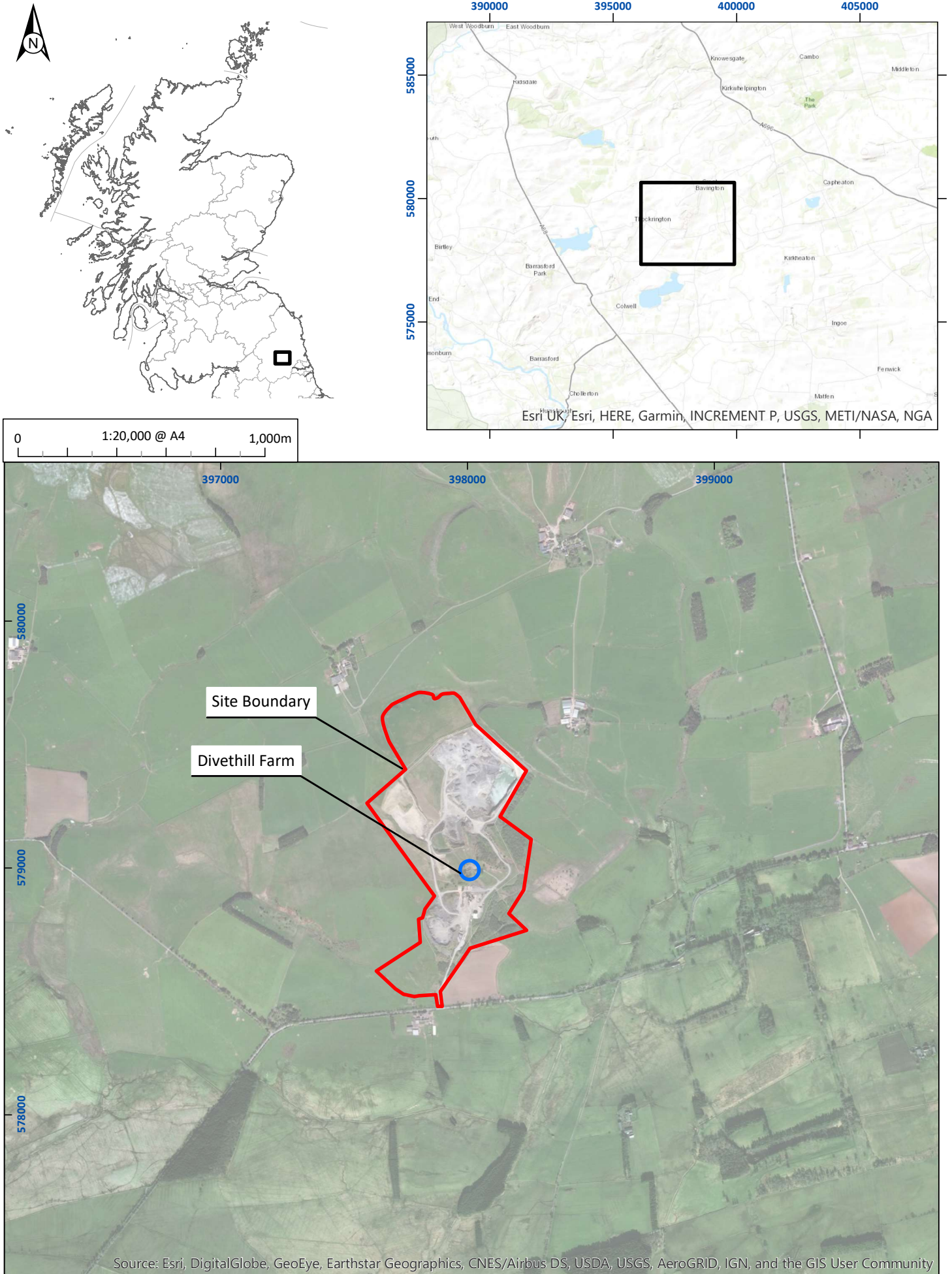


Figure 1: Site location plan

01/24982/HBRREP/01/01



Figure 2: Detailed site plan

01/24982/HBRREP/02/01

- 3.4 A drawn record of the site was also required, which included floor plans of the buildings. As no present plans existed, the survey was undertaken using a 3D Trimble TX5 laser scanner with additional measurements undertaken where necessary using hand tapes, long 30m/50m tapes and a DISTO® laser distance measurer. The plans show all wall lines, structural detail, architectural detail, windows, doors, blocked openings, phase lines, evidence of fireplaces, steps, changes in internal levels and other internal fixtures and fittings. A digital OS base map was also obtained to place the site on the National Grid (Figure 7).
- 3.5 Each building received a unique identifier (Cottage A; Barn B) and each room within each building then received a unique identifier relating to that building letter (Figure 7). This can be fully cross-referenced between the photographic, written and drawn record.

4 HISTORICAL BACKGROUND

- 4.1 Northumberland is a rural county and retains a number of farm and agricultural buildings, including examples of 'model' farms and rural farmsteads which developed over many centuries of use. These types of buildings are, however, now surplus to requirements given the changes in agricultural practices employed since the mid-late 20th century, which has steered away from the courtyarded farmsteads and now relies more heavily on larger steel shed construction. As such, many late 18th and 19th century farmsteads are now abandoned and left empty awaiting new use, or - in many cases - demolition for new development or industry, such is at the case at Divethill. Unfortunately, there is no data on the site in the Historic Environment Record, although a desk-based assessment was completed by Archaeology Services WYAS (2003) in advance of proposed gravel and sand extraction. However, this report did not mention Divethill Farm.
- 4.2 Divethill Farm is thought to be early 19th century in date and first appears in detail on the 1866 Ordnance Survey map (Figure 3). It is depicted as consisting of a long linear north-east/south-west barn (which is the barn which survives today) with another smaller detached barn to its north. There is then a much smaller detached barn or outbuilding to the south.
- 4.3 The exact same layout can be observed on the 1895 Ordnance Survey map (Figure 4). By the early 20th century, the 1922 Ordnance Survey map shows that the farm has been greatly expanded (Figure 5). There is now a farmhouse, which is the present 'cottage', located to the east of the farm and there has been expansion of the barns to the north, which is now shown as subdivided into two units. The same layout continues into the mid-20th century, as can be seen in the slightly smaller scale map of 1951 (Figure 6).
- 4.4 By the 1970s, a large (whinstone) quarry site was established to the immediate north-east of the farm and further to its south-west. However, the farm was still operational until the late 20th and early 21st century when the quarry encroached upon the farm's land and it was subsequently abandoned. Today, it lies at the centre of Divethill Quarry and consists of the farmhouse (cottage) and adjacent barn.

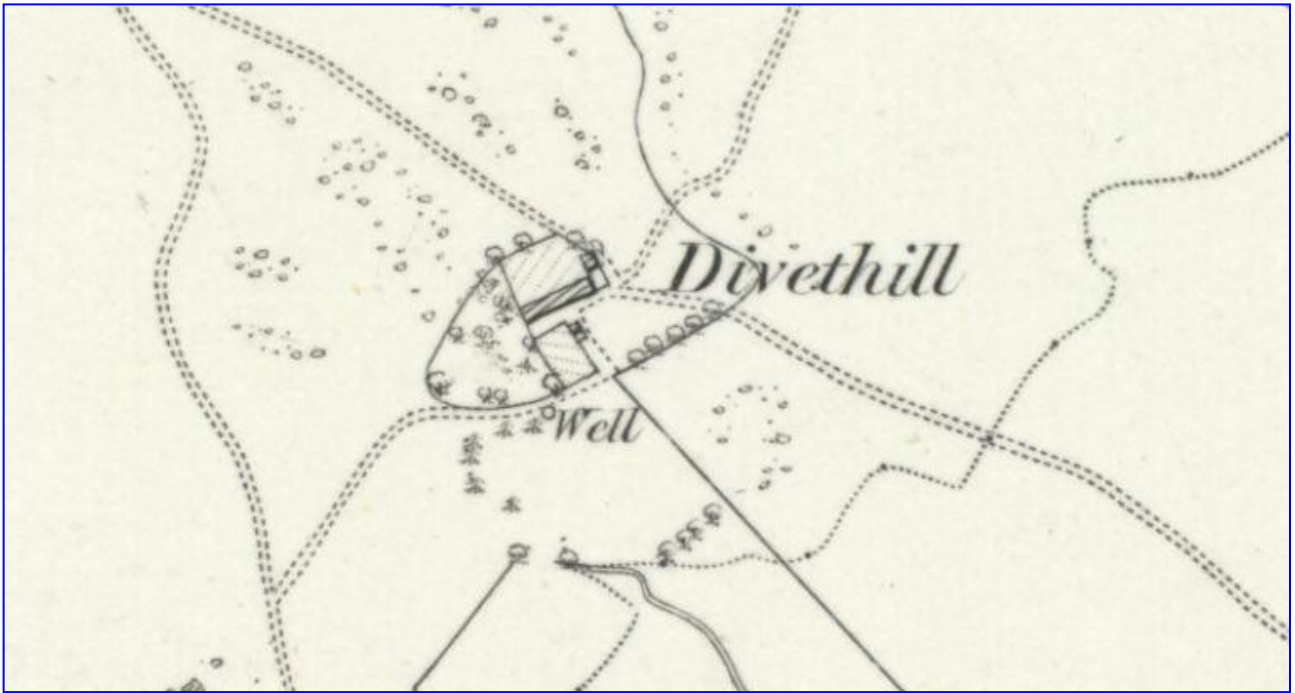


Figure 3: Extract from Ordnance Survey map, 1866

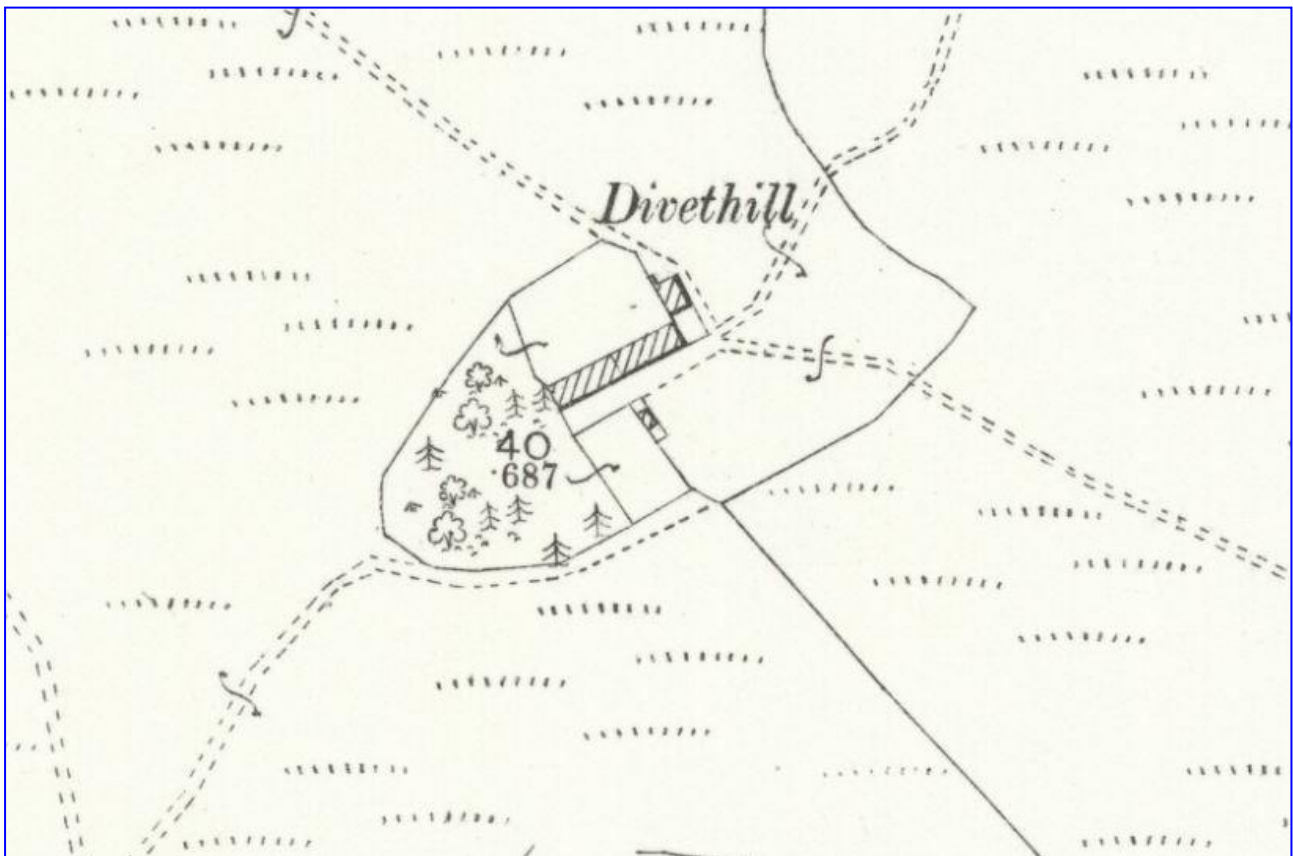


Figure 4: Extract from Ordnance Survey map, 1895

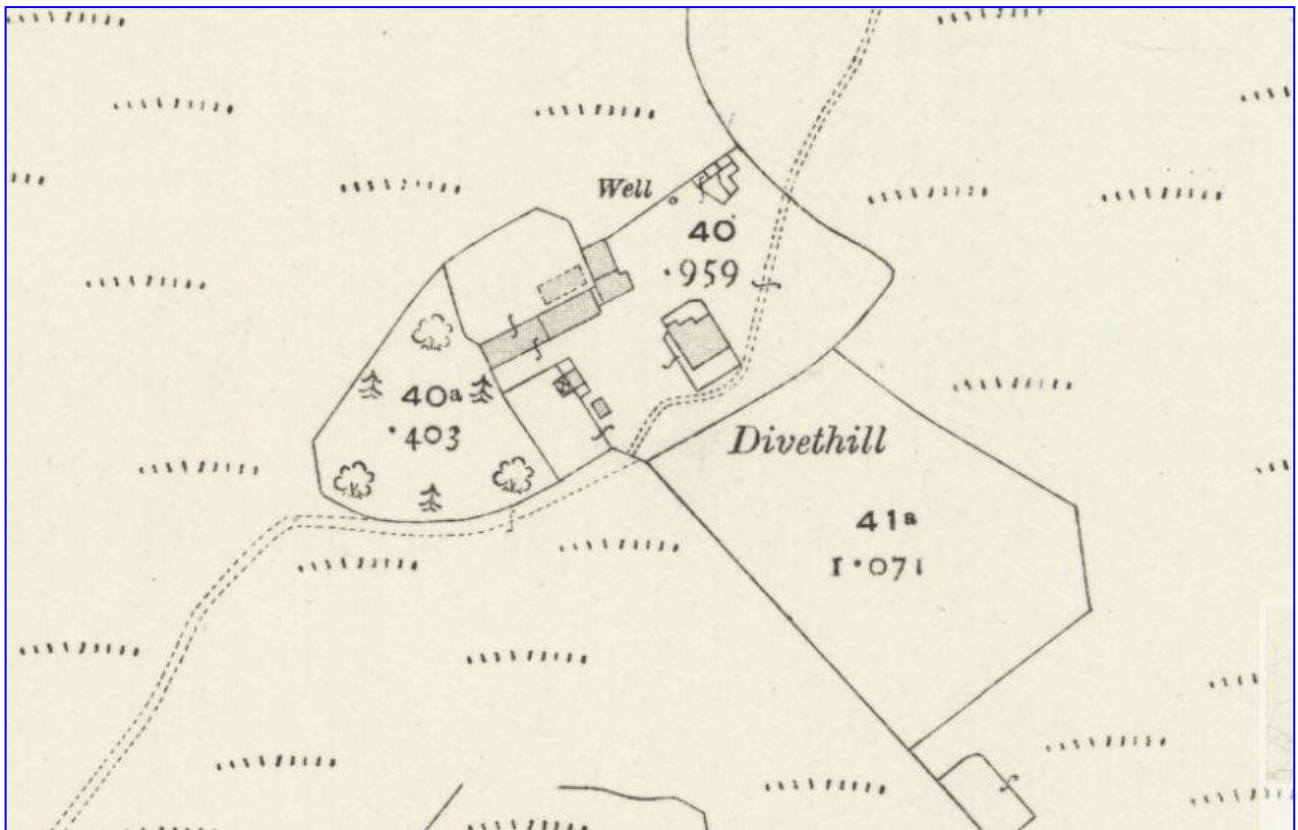


Figure 5: Extract from Ordnance Survey map, 1922

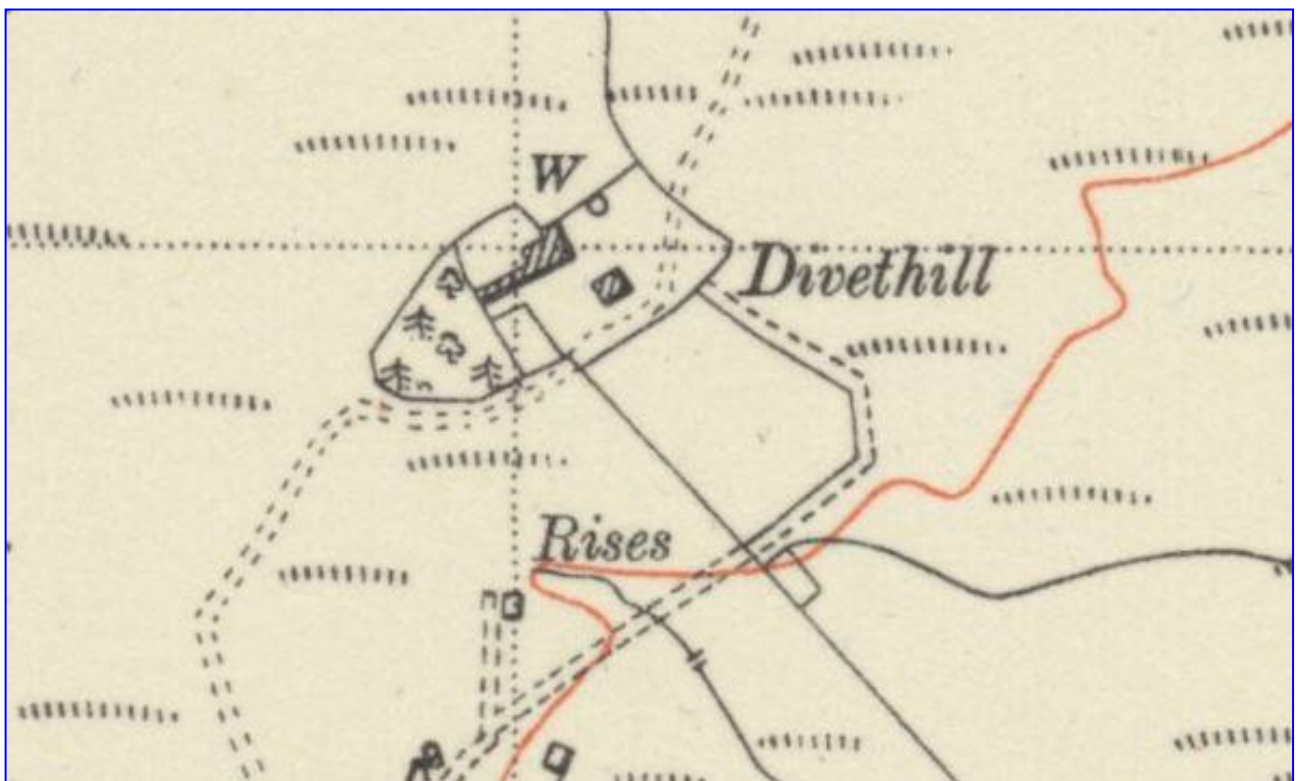


Figure 6: Extract from Ordnance Survey map, 1951

5 RESULTS

5.1 Building A: Cottage

5.1.1 Exterior

The cottage has been abandoned for some time, although was most recently used by the quarry, with some rooms converted to office and laboratory use. It is a detached three- by one-bay single-storey detached building of red brick construction and rendered in roughcast, although the bottom six courses are exposed to the brick walling (Plates 1 & 2). It has a hipped slate roof with terra-cotta flashing.

The original main entrance to the cottage is in the south-east elevation, comprising a central timber-panelled door with two-paned rectangular light above flanked by a two-over-two sash window to each side (Plates 3 – 5). Some of the render has come away from the façade in the north-east side, exposing the more orange brickwork contrasting with the red brick footings.

The rear entrance is to the north-west elevation, which comprises a plain modern inward-opening door to the south-west side with an adjacent three-paned top-opening timber casement window (Plates 6 & 7). The north-west elevation on the north-east side is set back from this rear porch area with two additional timber top-opening casement windows to the main kitchen and pantry, the latter window being much shorter. On the south-west end of the cottage is a small coal store/log shed in stretcher bond brick with a lean-to felt roof. It has a tall vertically timber-panelled north-east facing doorway (Plate 8).

The north-east side elevation is relatively plain with only a single window in the north-west side, another two-over-two sash window (Plates 9 & 10). The opposite south-west elevation has another two two-over-two sash windows, although the south-east window is narrower than the rest (Plates 11 & 12). The small laboratory extension has been added to the west corner of the cottage, which is again brick-built and covered in a roughcast render, with tall wide casement windows and a shallow lean-to felt roof (Plate 13). A steel tank has also been added to the north-west side of this extension behind the brick coal shed/log store.

5.1.2 Interior

The interior of the original cottage consists of a number of rooms to the north-west and south-west of a central corridor, which is itself divided into Rooms A1a and A1b (Figure 8). Room A1a to the south-east end has retained its north-west/south-east-orientated timber floorboards, although to the main corridor, A1b, these have been covered by linoleum. The main front door in the south-east elevation is a timber-panelled door with its original fittings with a two fixed-paned lights above, all set in a moulded timber doorframe (Plate 14). An additional inner door located halfway along the corridor divides the two spaces, which is timber-panelled and glazed, a flower pattern etched into the glass, again with its original fittings including a plain keyhole and keyhole cover on the south-east side (Plates 15 & 16). Both corridors have timber-panelled doors throughout leading to the surrounding rooms (Plates 17 & 18).

Room A2 is located to the east corner of the cottage and was filled with paperwork and other office equipment at the time of survey. The timber floorboards and moulded skirting continues from the adjacent hallway, and it has an inward-opening timber-panelled door in the south-west wall and a two-over-two sash window in the south-east wall set in a moulded frame (Plate 19). A chimney breast is located in the centre of the north-west wall, although the fireplace has long since been removed and the space rendered over. A small cupboard is located to the south-west side.

In the centre of the north-east side of the cottage is a small thin bathroom, Room A3, with the linoleum floor covering continuing from the corridor and a much plainer modern timber skirting. There is an inward-opening timber-panelled door in the south-west wall and a two-over-two sash window, with frosted glass, in the opposite north-east wall (Plate 20).

Room A4 is the kitchen which is located in the north corner of the cottage and is a narrow galley-style kitchen with the linoleum continuing from the corridor to its south and a plain modern timber skirting identical to the bathroom. It has an inward-opening timber-panelled door in the south-west wall dividing it from the corridor, with its original fittings and keyhole. There is then another tall timber top-opening

casement in the north-west wall (Plate 21). There is a small pantry in the north-east side with a small one-over-one casement window, also in the north-west wall.

Room A5 is located to the west corner of the cottage and is a relatively large room with non-slip panels over the timber floorboards and a moulded timber skirting. The original access to this room from the corridor (A1a) in the south-east wall has now been nailed shut and the present access is in the north-west wall from Room A6. The door has now been removed, leaving the moulded timber frame. There are two windows in this room, a large two-over-two sash window in the south-east wall and another narrower window in the south-west wall, off-set to the north-west side (Plates 22 & 23). A chimney breast is present in the north-west wall, although (as with Room A2) the fireplace has long since been removed, filled in and rendered over. Most recently used as a laboratory, there are modern workbenches, fixtures and fittings and strip lighting.

Room A6 was also most recently used as a laboratory with square terra-cotta floor tiles, a course of tiles also acting as a skirting around the room. It has an inward-opening plain modern door in the north-east wall from the corridor and in the south-west wall is the aforementioned open doorway from Room A5. There is a two-over-two sash window in the south-west wall and, adjacent to this, another open doorway through to the west extension, Room A7 (Plate 24). Another chimney breast – again the fireplace removed and rendered over – is located in the south-east wall. The room has modern fixtures and fittings throughout and strip lights. Room A7 is the later extension to the cottage, the floor tiles and skirting continuing from Room A6, and an open doorway in the north-east wall from that room. There is a large three-over-two top-opening casement window in the south-east wall providing an abundance of light to this laboratory space (Plate 25).

Room A8a is the rear porch entrance, which has a small side cupboard on the south-west side, Room A8b. Both have a smooth concrete floor with a very plain flat timber cornice with the ceiling taking in the slope of the roof. The back door of the cottage is in the north-west wall, a modern plain inward-opening door. The main corridor, Room A1b, can be accessed via the corridor through another outward-opening timber-panelled door in the north-east side of the south-east wall. The doorway to the cupboard, Room A8b, is in the south-west side and has a thin vertically timber-panelled and braced door (Plate 26). There are two windows in Room A8a, including a three-paned casement in the north-west wall and a much smaller top-opening casement in the north-east wall (Plate 27). Room A9, originally built as a coal shed/log store, was later appropriated by the quarry, and features a bricked-up window in its rear south-west wall (Plate 28).

5.2 Building B: Barn

5.2.1 Exterior

The barn, which is the only survivor of the farm buildings at Divethill, is a linear north-east/south-west single-storey barn in whinstone rubble with dressed sandstone to the original openings (Plate 29). It is set at three differing heights, all with pitched roofs, with a pitched corrugated asbestos roof over the long lower section of the building to the north-east, a slightly taller central section with a corrugated-iron roof, and an even taller section to the south-west end of the barn, also with a corrugated-iron roof, albeit in a much more dilapidated condition.

The south-east elevation is the frontage of the barns, with the long north-east section housing two doorways leading into two large former cow byres with slit windows and an additional square window in the south-west side (Plates 30 – 32). Additional light has been added with clear plastic panels in the pitched corrugated asbestos panelling. The centre section of the barn with the corrugated-iron roof has a small doorway in the south-west side and an additional window (Plate 33). The whinstone rubble here has also been largely rendered over and an upper course of red brick is visible in the build, just below the roof line. The south-west end of this elevation then forms the highest section of the barn, built as such due to the rise of the ground level and the proximity of the adjacent bank, with a small window in the centre, the glazing gone although the timber framing still in place (Plate 34).

The opposite north-west elevation is much shorter in height due to the slope of the ground level here, the long north-east section of the barn only approximately 1.5m in height at the north-east end (Plates 35 & 36). There are a number of features in this north-east section, including two slit windows located to either side of an inserted window with brick surround just below the roof line, and another smaller window

with a timber lintel and frame still partially *in situ* (Plates 37 – 40). The central section of the barn is in a very poor condition with a very crudely blocked opening on the north-east side. As with the south-east elevation, there is a row of red brick to the upper part of the wall here, and there is then a sequence of inserted openings including a wide central opening flanked by two small windows, the frames partially *in situ* (Plates 41 & 42). The south-west barn on this rear wall is very low in height and is mostly obscured by quarry debris and boulders, although the whinstone rubble construction can be seen together with a clear phase line in the north-east side, indicating that this end of the barn may have been a later addition (Plates 43 & 44).

The north-east gable has a small ground floor window off-set to the south-east side, the timber frame still in place although it is now boarded-up on the interior side (Plates 45 & 46). The opposite south-west gable has no apparent features and is set immediately adjacent to the steep bank here (Plates 47 & 48). A removed section of roof material at the end of the gable has exposed the deep slot that was built into the wall to support the purlins. Within the build, there are also the occasional projecting stone, which may be related to how the barn was initially constructed.

5.2.2 Interior

The interior of the barns consists of four distinct rooms, B1 – B5, each of which is divided by a thick gable internal wall (Figure 9). All of the interior of the barns have earthen floors and are open to the bare whinstone rubble and the timber-framed roofing. Barn B1 to the north-east end has an open doorway in the south-west wall, the door removed, although the position of the jamb indicates it was an inward-opening door (Plate 49). In the north-east wall is a small window, now boarded-up, the wall collapsed beneath it (Plate 50). There is also a tiny window, 240mm in width, in the south-west internal gable wall (Plate 51). A timber partition is located in the south-west side of the room to create a separate and secured animal pen to the north-east side (Plate 52). The exposed timber-framing comprises of two crude king post roof trusses with the king post bolted to the tie beam and the struts fitted around the rafters, the tie beam and further bolted to secure them (Plates 53 & 54). There are no sarking boards above the purlins, and the underside of the corrugated roof is visible.

Barn B2 is a slightly larger barn with a vertically timber-panelled inward-opening door in the south-east wall with a round loop door handle to the exterior and latch to the interior (Plate 55). There is a high-set window in the north-west wall, an inserted window with cement mortaring around the window bay and the timber frame still intact (Plate 56). There are then two slit windows in the north-east and south-west gable walls, indicating that this barn was probably used as a cow byre (Plate 57). In both the north-east and south-west sides of the room are two timbers comprising whole trunks – embedded into and set low to the wall – just to the inside of the slit windows (Plate 58). There are also raised stone platforms to both sides of the room either side of the doorway denoting the former position of possible animal pens. There are two king post roof trusses in this room identical to those in Barn B1 (Plates 59 – 66). Here, nails have been attached to the tie beam for hanging tools and equipment.

Barn B3 is a small single-bay barn only accessed to the south-west through an open doorway with timber lintel in the north-west side of the south-west wall from Barn B4. There is a splayed window to both the north-west and south-east walls, each with timber lintels (Plates 67 & 68).

Barn B4 is the largest barn with an inward-opening vertically timber-panelled door in the south-east wall. The original lock fittings have been removed and it has a pull handle and a square panel cut out of the top of the door for viewing inside (Plate 69). There is also a square-set doorway in the south-west wall through to Barn B5 with a stone threshold, and another to the north-east wall, already mentioned, through to Barn B3 (Plate 70). In the north-east side of the north-west wall there is a wide rubble-blocked splayed opening (see Plate 70) and to the south-west side there are three inserted square-set windows with a brick surround with two narrower windows to either side (Plate 71). In the south-east wall, adjacent to the doorway, there is a splayed original window with a timber sill and lintel (Plate 72). The upper part of the wall here has been built up in concrete. At the top of the south-west gable there is a small loft window, splayed on this side, and in the north-east gable there is a recess with a crude timber lintel on the south-east side. It has a small bricked-up adjacent window in the centre of this wall. The timber roof trusses in this barn appear to have been replaced with newer king posts which have no struts (Plate 73).

Barn B5 is located to the south-west end of the barn, the only access being an open doorway in its north-east wall from Barn B4 (Plate 74). The timber frame of the door has survived, noting that it would have been an inward-opening door. There is a splayed window in the south-east wall with a timber lintel and a tiny inserted window to the centre of the north-west wall with a brick surround (Plates 75 & 76). The south-west wall is, as the exterior, devoid of features with large boulder-like foundations stones visible at the base of the wall (Plates 77 & 78).

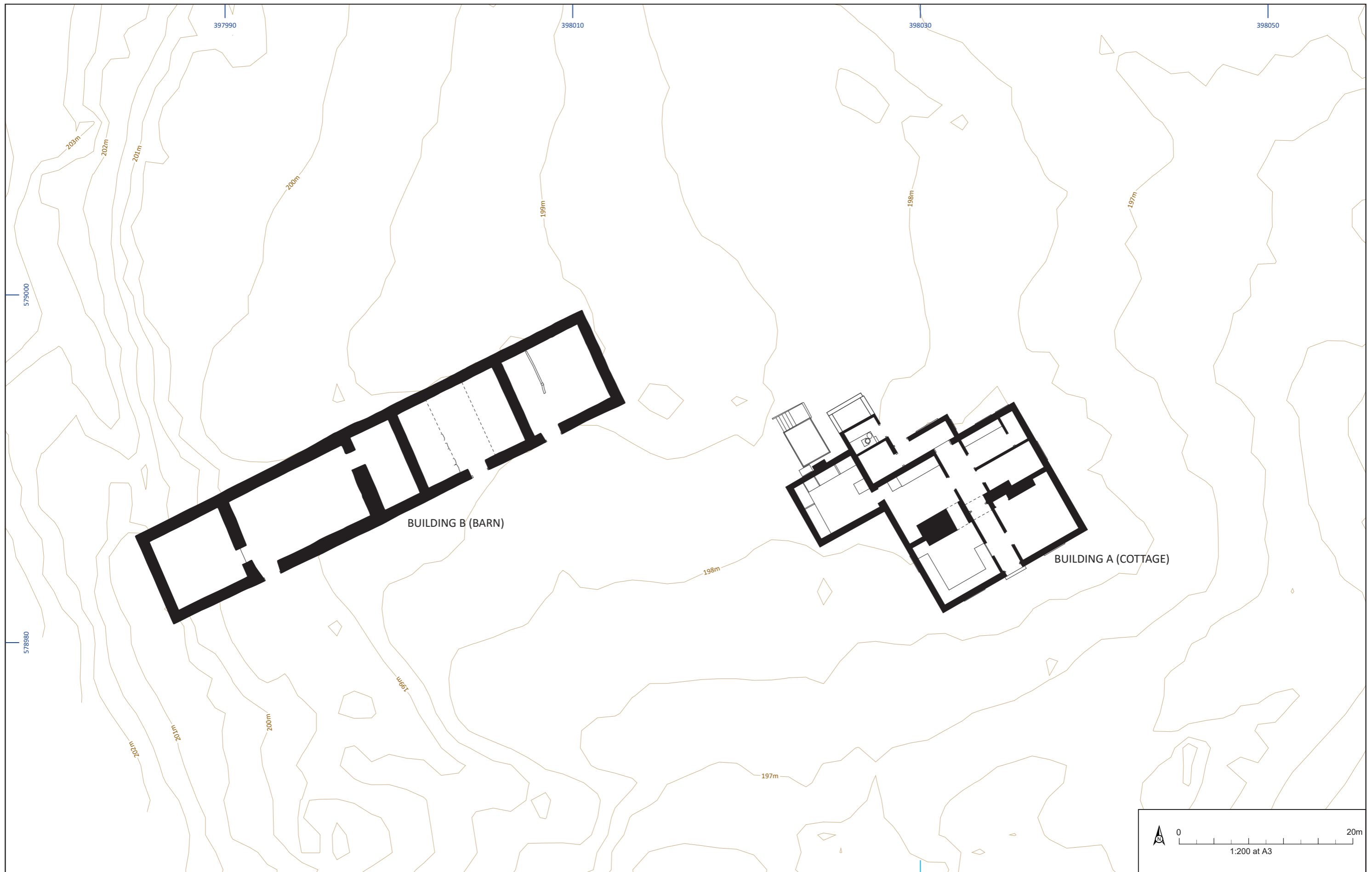


Figure 7: Topographic Site Plan

01/24982/HBRREP/7/01

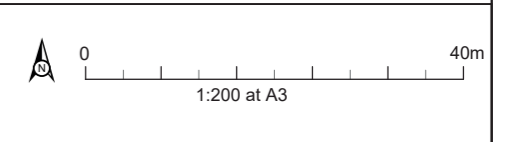
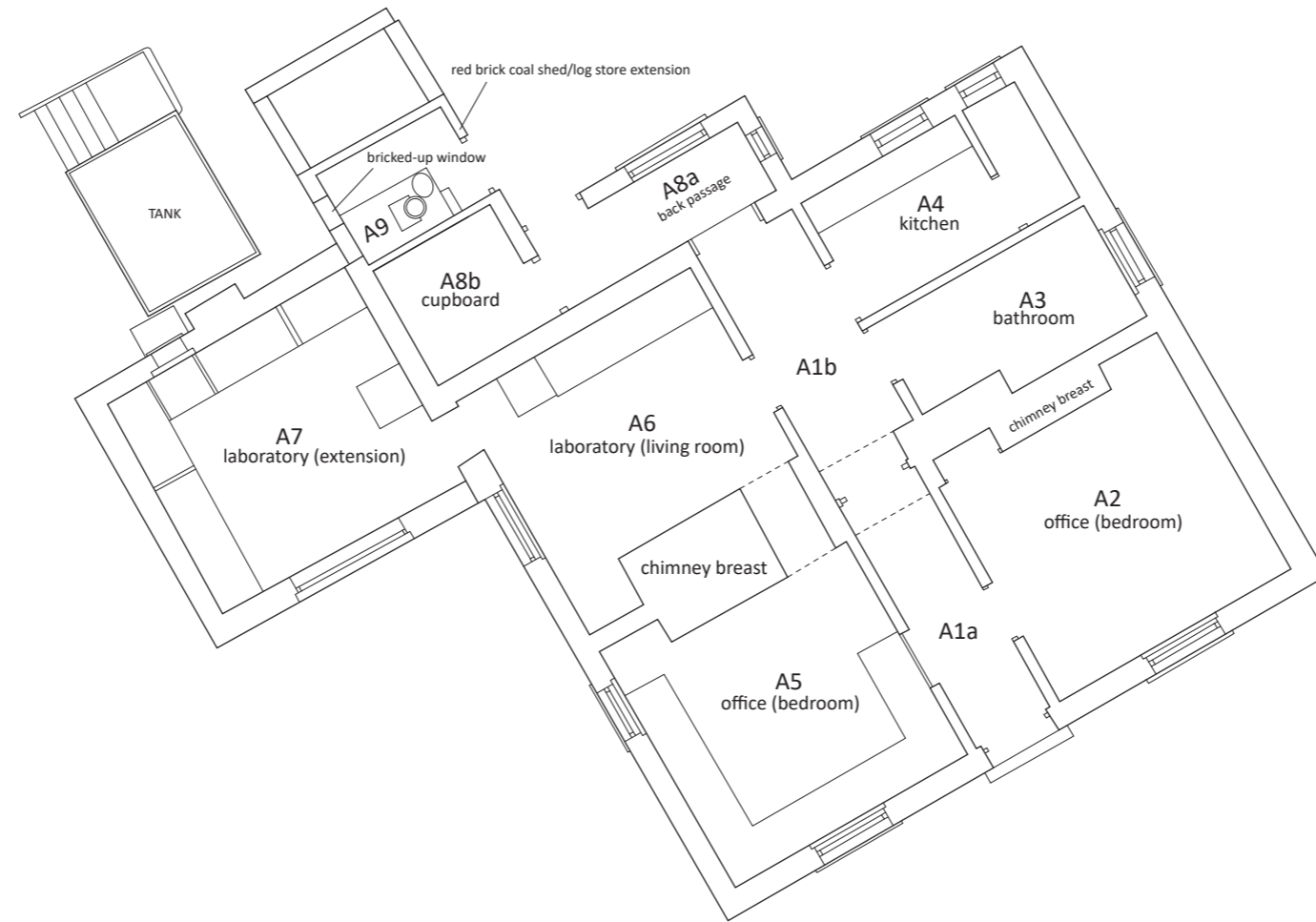
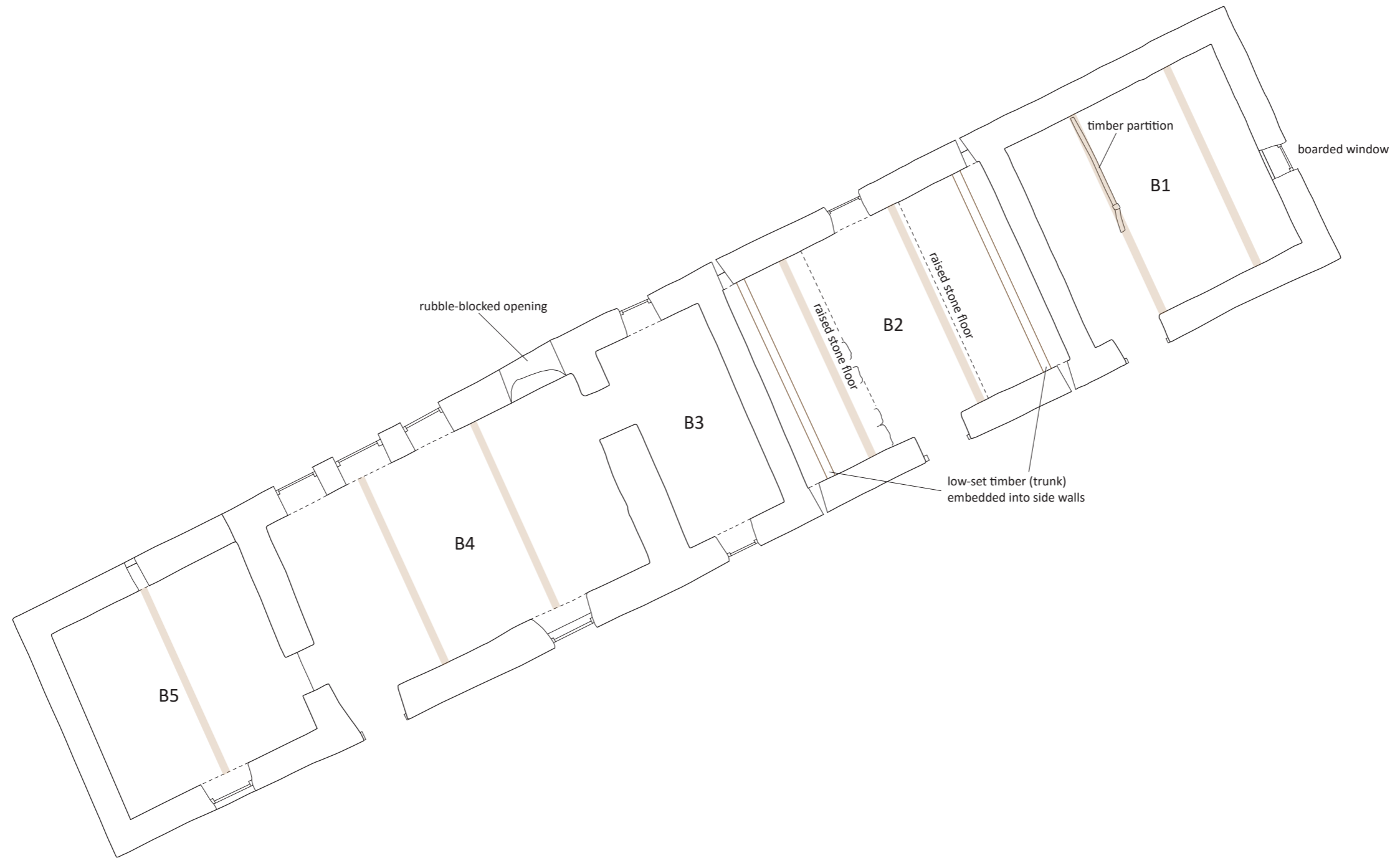


Figure 8: Building A (Cottage), Ground Floor Plan



KEY
= position of timber roof truss

0 40m
1:200 at A3

Figure 9: Building B (Barn), Ground Floor Plan

01/24982/HBRREP/9/01



Plate 1 (08): Building A (Cottage), general view from the south



Plate 2 (11): Building A (Cottage), general view from the WSW



Plate 3 (06): Building A (Cottage), general view of the south-east elevation from the SSE



Plate 4 (09): Building A (Cottage), general view of the south-east elevation from the south



Plate 5 (07): Building A (Cottage), detail of the main entrance in the centre of the south-east elevation, from the south-east



Plate 6 (01): Building A (Cottage), general view of the north-west elevation from the north-west



Plate 7 (02): Building A (Cottage), detail of the back door and adjacent window in the north-west elevation, from the north-west



Plate 8 (03): Building A (Cottage), detail of the north-east facing side of the small brick lean-to addition in front of the north-west elevation, from the north-east



Plate 9 (04): Building A (Cottage), general view of the north-east elevation, from the north-east



Plate 10 (05): Building A (Cottage), detail of the sash window in the north-west side of the north-east elevation, from the north-east



Plate 11 (13): Building A (Cottage), general view of the south-west elevation from the south-west



Plate 12 (10): Building A (Cottage), general view of the south-west elevation (original cottage), from the south-west



Plate 13 (12): Building A (Cottage), detail of the south-east elevation of the extension to the west side of the original cottage, from the south-east



Plate 14 (14): Building A (Cottage), general view of Room A1a from the north-west



Plate 15 (15): Building A (Cottage), detail of central doorway between Rooms A1a and A1b, from the south-east



Plate 16 (16): Building A (Cottage), detail of central doorway between Rooms A1a and A1b, from the north-west



Plate 17 (18): Building A (Cottage), detail of doorway in Room A1a leading into Room A5 (now no longer in use and nailed shut), from the north-east



Plate 18 (17): Building A (Cottage), detail of the door in the north-east side of corridor A1b (through to the back passage, Room A8a), from the south-east



Plate 19 (19): Building A (Cottage), general view of Room A2 from the west



Plate 20 (20): Building A (Cottage), general view of Room A3 from the south-west



Plate 21 (21): Building A (Cottage), general view of Room A4 from the WSW



Plate 22 (23): Building A (Cottage), general view of the south-west elevation of Room A5, from the NNW



Plate 23 (22): Building A (Cottage), detail of the window in the south-west elevation of Room A5, from the east



Plate 24 (24): Building A (Cottage), general view of the south-west elevation of Room A6, from the north-east



Plate 25 (25): Building A (Cottage), detail of window in the south-east elevation of Room A7, from the north



Plate 26 (27): Building A (Cottage), general view of Room A8a looking into side cupboard, A8b, from the north-east



Plate 27 (26): Building A (Cottage), detail of window in the north-west elevation of Room A8a, from the south-east



Plate 28 (28): Building A (Cottage), general view of Room A9, coal shed/log store, showing the blocked rear window, from the north-east



Plate 29 (29): Building B (Barn), general view from the east



Plate 30 (30): Building B (Barn), general view of the north-east side of the south-east elevation, from the south-east



Plate 31 (31): Building B (Barn), detail of the entrance into Barn B1 and the adjacent slit window in the north-east end of the south-east elevation, from the south-east



Plate 32 (32): Building B (Barn), detail of the door through to Barn B2 and the adjacent window and slit window in the north-east side of the south-east elevation, from the south-east



Plate 33 (33): Building B (Barn), general view of the south-west side of the south-east elevation, from the east



Plate 34 (34): Building B (Barn), detail of the window in the south-west end of the south-east elevation, from the east



Plate 35 (37): Building B (Barn), general view from the north



Plate 36 (38): Building B (Barn), general view of the north-west elevation from the north



Plate 37 (39): Building B (Barn), general view of the north-east side of the north-west elevation, from the north-west



Plate 38 (40): Building B (Barn), detail of the easternmost slit window in the north-east side of the north-west elevation, from the north-east



Plate 39 (41): Building B (Barn), detail of the inserted window of Barn B2 in the north-east side of the north-west elevation, from the north-east



Plate 40 (42): Building B (Barn), detail of window of Barn B3 in the centre of the north-west elevation, from the north-west



Plate 41 (43): Building B (Barn), general view of the south-west side of the north-west elevation showing the inserted windows in Barn B4, from the north-west



Plate 42 (44): Building B (Barn), detail of the inserted windows in Barn B4, from the north-west



Plate 43 (45): Building B (Barn), general view of the south-west end of the north-west elevation, from the north



Plate 44 (46): Building B (Barn), general view of the north-west elevation of Barn B5, from the north



Plate 45 (35): Building B (Barn), general view of the north-east gable, from the north-east



Plate 46 (36): Building B (Barn), detail of the boarded window in the north-east gable, from the north-east



Plate 47 (48): Building B (Barn), general view of the south-west end of the barn, from the south



Plate 48 (47): Building B (Barn), general view of the south-west gable, from the south



Plate 49 (54): Building B (Barn), Barn B1, general view showing the doorway in the south-east elevation, from the east



Plate 50 (49): Building B (Barn), Barn B1, general view showing the boarded window in the north-east elevation, from the south

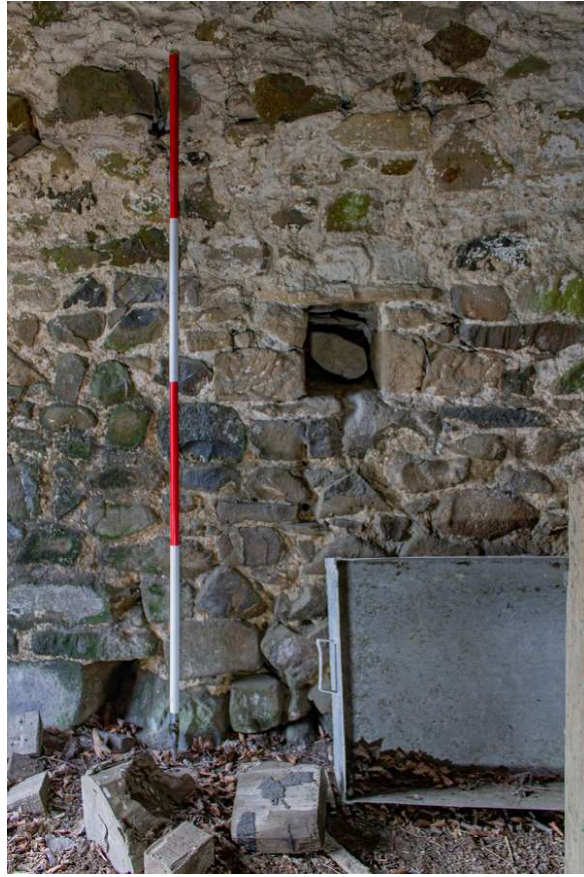


Plate 51 (53): Building B (Barn), Barn B1, detail of the small opening in the centre of the south-west elevation, from the north-east



Plate 52 (52): Barn B1, Building B (Barn), detail of the timber partition for the animal pen, from the south-east



Plate 53 (50): Barn B1, Building B (Barn), general view of the timber roof truss from the south



Plate 54 (51): Barn B1, Building B (Barn), detail of the rafter of the timber roof truss resting over the north-west wall and showing the bolting of the tie beam, from the south



Plate 55 (58): Barn B2, Building B (Barn), general view of the south-west side of the south-east elevation showing the low timber and slit window (to the right) and the main doorway (to the left), from the north-west



Plate 56 (55): Building B (Barn), Barn B2, detail of inserted window in the north-west elevation, from the south-east



Plate 57 (57): Building B (Barn), Barn B2, detail of the north-east side of the south-east elevation showing the slit window and low timber, from the WNW



Plate 58 (56): Building B (Barn), Barn B2, detail of low timber in the north-east side of the room, from the south



Plate 59 (59): Building B (Barn), Barn B2, general view of the north-east timber roof truss from the west



Plate 60 (65): Building B (Barn), Barn B2, general view of the north-east timber roof truss from the WNW



Plate 61 (66): Building B (Barn), Barn B2, general view of the north-east timber roof truss from the SSW



Plate 62 (60): Building B (Barn), Barn B2, detail of the bolt fastening the king post and tie beam in the north-east timber roof truss, from the south-west



Plate 63 (62): Building B (Barn), Barn B2, detail of the top of the north-east roof truss showing the king post bolted to the rafters, from the south-west



Plate 64 (61): Building B (Barn), Barn B2, detail of the rafter of the north-east timber roof truss as it sits over the south-east wallhead, from the west



Plate 65 (63): Building B (Barn), Barn B2, detail of rafter of the north-east timber roof truss resting over the north-west wallhead, from the south-west



Plate 66 (64): Building B (Barn), Barn B2, detail of the strut slotted into the rafter of the north-east timber roof truss on north-west side, from the south-west



Plate 67 (67): Building B (Barn), Barn B3, general view from the north-east



Plate 68 (68): Building B (Barn), Barn B3, general view from the south-west



Plate 69 (69): Building B (Barn), Barn B4, general view from the north-east



Plate 70 (72): Building B (Barn), Barn B4, detail of the north corner showing the rubble-blocked opening (left) and the doorway through to Barn B3 (right), from the south



Plate 71 (71): Building B (Barn), Barn B4, detail of the inserted openings in the north-west wall, from the SSE



Plate 72 (70): Building B (Barn), Barn B4, detail of the window in the south-east elevation, from the north-west



Plate 73 (73): Building B (Barn), Barn B4, detail of the north-east timber roof truss from the WSW



Plate 74 (76): Building B (Barn), Barn B5, detail of the doorway (and upper opening) in the north-east elevation, from the west



Plate 75 (75): Building B (Barn), Barn B5, detail of the window in the south-east elevation, from the north-west

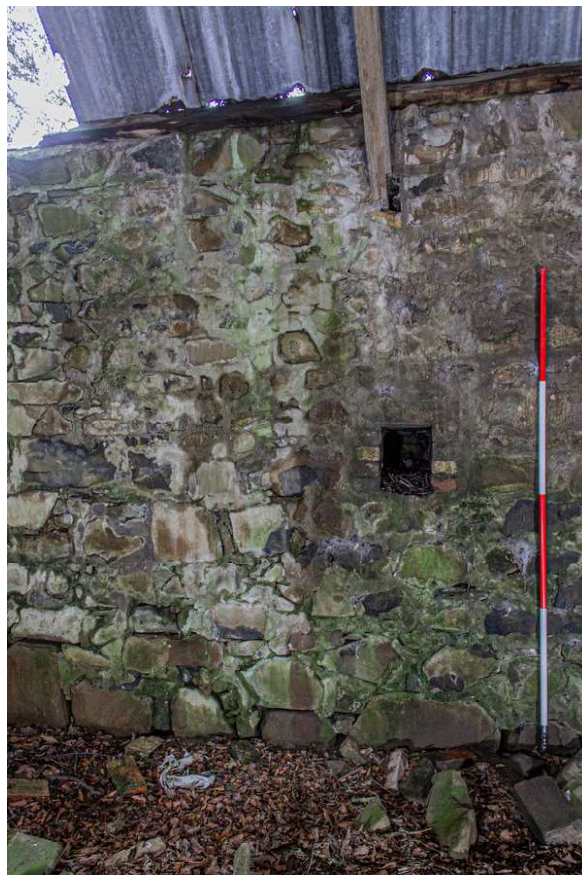


Plate 76 (74): Building B (Barn), Barn B5, detail of the tiny inserted opening in the north-west elevation, from the south-east



Plate 77 (77): Building B (Barn), general view of the south-west elevation from the NNE



Plate 78 (78): Building B (Barn), detail of the base of the south-west elevation, from the NNE

6 DISCUSSION

- 6.1 Divethill farm was established in the early-mid 19th century centred around the linear barn (B) that has survived today. There is little to suggest that the barn was ever occupied – there is no evidence of any fireplaces or other domestic features – although the detached barn to the north of Barn B seen on the 1866 and 1895 maps may have served as a bothy or small dwelling. As a small farm complex, the barns probably had a number of functions, although to the north-east section at least, the slit windows suggest that this area was used as a cow byre.
- 6.2 Between 1895 and 1922, the present cottage was constructed, at a time where the farm expanded. A well was dug and the detached north barn became integrated with the main barn, although was subsequently demolished in the late 20th century. In terms of its layout, the cottage is very simple in design, a central hallway with a small galley kitchen (A4), bathroom (A3) and bedroom (A2) in the north-east side and another bedroom (A5) and lounge (A5) in the south-west side. Once appropriated by Divethill Quarry as a laboratory and related offices, a single-roomed extension (A7) was constructed to the west corner and a door was knocked through the wall between Rooms A5 and A6, the door to the corridor in Room A5 nailed shut to create a self-contained and controlled-access area for the quarry's scientific activities.

7 CONCLUSIONS

- 7.1 The two remaining buildings comprising the former Divethill Farm consist of an early-mid 19th century barn and an early 20th century cottage, the latter built at a time of expansion of the farm buildings together with the excavation of a new well. The barn probably served a number of functions as part of the farm, although was largely used as a cow byre. The cottage is fairly simple and typical of a small early 20th cottage, with four large rooms and a small kitchen centred around a central hallway or corridor. Most latterly used by the quarry, a small single-room laboratory was built on the south-west side.
- 7.2 No further historic building survey is recommended on the site prior to development, although this will need to be confirmed in writing by the Northumberland County Council. The need for further works, including the archaeological monitoring of the demolition and other ground reduction works, has been discussed with the Northumberland County Council Conservation Team who have confirmed that this is not necessary for this project.

8 REFERENCES

8.1 Bibliographical References

Archaeology Services WYAS 2003 *Divethill Quarry, Little Bavington, Northumberland: Archaeological Assessment*. Grey literature report for RMS Aggregates (UK).

CIfA 2014 *Standard and Guidance for the Creation, Compilation, Transfer and Deposition of Archaeological Archives*.

https://www.archaeologists.net/sites/default/files/CIFAS&GArchives_2.pdf, Accessed 2nd September 2019.

CIfA 2019 *Standard and Guidance for the Archaeological Investigation and Recording of Standing Buildings and Structures*. https://www.archaeologists.net/sites/default/files/CIfAS%26GBuildings_2.pdf, Accessed 2nd September 2019.

Historic England 2015 *Management of Research Projects in the Historic Environment. Management of Research Projects in the Historic Environment*.

<https://historicengland.org.uk/images-books/publications/morphe-project-managers-guide/heag024-morphe-managers-guide/>, Accessed 2nd September 2019.

Historic England 2016 *Understanding Historic Buildings: A Guide to Good Recording Practice*.

<https://historicengland.org.uk/images-books/publications/understanding-historic-buildings/>, Accessed 2nd September 2019

8.2 Cartographic references

1866	Ordnance Survey	<i>Northumberland Sheet LXXVII</i>
1895	Ordnance Survey	<i>Northumberland (Old Series) Sheet LXXVII.4</i>
1922	Ordnance Survey	<i>Northumberland (New Series) Sheet LXXV.5</i>
1951	Ordnance Survey	<i>Northumberland Sheet nLXXV.NW</i>

APPENDIX 1: DIGITAL PHOTOGRAPHIC RECORD

Ref No	Building	Description	Taken From	Date
DVT_01	Cottage Exterior	General view of the NW Elevation	NW	09/10/2019
DVT_02	Cottage Exterior	Detail of the rear porch, door and window in the NW Elevation	NW	09/10/2019
DVT_03	Cottage Exterior	Detail of the brick extension to the SW side of the NW Elevation (NE-facing)	NE	09/10/2019
DVT_04	Cottage Exterior	General view of the NE Elevation	NE	09/10/2019
DVT_05	Cottage Exterior	Detail of window on the NE Elevation	NE	09/10/2019
DVT_06	Cottage Exterior	General view of the SE Elevation	ESE	09/10/2019
DVT_07	Cottage Exterior	Detail of the main entrance in the SE Elevation	SE	09/10/2019
DVT_08	Cottage Exterior	General view of the SE Elevation	S	09/10/2019
DVT_09	Cottage Exterior	General view of the SE Elevation	S	09/10/2019
DVT_10	Cottage Exterior	General view of the SW Elevation	SW	09/10/2019
DVT_11	Cottage Exterior	General view of the SW Elevation	SSW	09/10/2019
DVT_12	Cottage Exterior	Detail of the extension in the SW side of the cottage	SW	09/10/2019
DVT_13	Cottage Exterior	General view of the SW Elevation	SW	09/10/2019
DVT_14	Cottage Interior	Room A1a, general view showing main entrance in the SE Elevation	NW	09/10/2019
DVT_15	Cottage Interior	Room A1a, detail of the interior door between Rooms A1a and A1b	SE	09/10/2019
DVT_16	Cottage Interior	Room A1b, detail of the interior door between Rooms A1a and A1b	NW	09/10/2019
DVT_17	Cottage Interior	Room A1b, detail of outer rear door between Rooms A1b and A8	SE	09/10/2019
DVT_18	Cottage Interior	Room A1a, detail of door in SW Elevation (now no longer in use) to Room A5	NE	09/10/2019
DVT_19	Cottage Interior	Room A2, detail of window in the SE Elevation	W	09/10/2019
DVT_20	Cottage Interior	Room A3, general view	SW	09/10/2019
DVT_21	Cottage Interior	Room A4, general view showing window in the NW Elevation	S	09/10/2019
DVT_22	Cottage Interior	Room A5, detail of the window in the NW side of the SW Elevation		09/10/2019
DVT_23	Cottage Interior	Room A5, general view showing window in the SE Elevation	N	09/10/2019
DVT_24	Cottage Interior	Room A6, detail of windows in the SW Elevation	NE	09/10/2019
DVT_25	Cottage Interior	Room A7, detail of window in the SE Elevation	N	09/10/2019
DVT_26	Cottage Interior	Room A8, detail of window in the NE side of the NW Elevation	SE	09/10/2019
DVT_27	Cottage Interior	Room A8, general view	NE	09/10/2019
DVT_28	Cottage Interior	Room A9, general view	NE	09/10/2019
DVT_29	Barn Exterior	General view	ESE	09/10/2019
DVT_30	Barn Exterior	General view of the NE side of the SE Elevation	SE	09/10/2019
DVT_31	Barn Exterior	Detail of the door and slit window to Room B1 in the NE side of the SE Elevation	SE	09/10/2019
DVT_32	Barn Exterior	Detail of door to Room B1 and window to Room B2 in the NE end of the SE Elevation	SE	09/10/2019
DVT_33	Barn Exterior	General view of the SW side of the SE Elevation	ESE	09/10/2019
DVT_34	Barn Exterior	Detail of window to Room B5 in the SW side of the SE Elevation	ESE	09/10/2019
DVT_35	Barn Exterior	General view of NE Gable	NE	09/10/2019
DVT_36	Barn Exterior	Detail of window in the NE Gable	NE	09/10/2019
DVT_37	Barn Exterior	General view	N	09/10/2019
DVT_38	Barn Exterior	General view of the NW Elevation	N	09/10/2019
DVT_39	Barn Exterior	General view of the NE side of the NW Elevation	NW	09/10/2019
DVT_40	Barn Exterior	Detail of window in the NE side of the NW Elevation (to Room B2)	NW	09/10/2019
DVT_41	Barn Exterior	Detail of window in the NE side of the NW Elevation (to Room B2)	NW	09/10/2019
DVT_42	Barn Exterior	Detail of window in the centre of the NW Elevation (to Room B3)	NW	09/10/2019
DVT_43	Barn Exterior	General view of the SW side of the NW Elevation showing openings to Room B4	NW	09/10/2019
DVT_44	Barn Exterior	General view of the SW side of the NW Elevation showing openings to Room B4	NW	09/10/2019

DVT_45	Barn Exterior	General view of the SW end of the NW Elevation	NNE	09/10/2019
DVT_46	Barn Exterior	Detail of the N end of the NW Elevation	NNE	09/10/2019
DVT_47	Barn Exterior	General view of the SW Gable	S	09/10/2019
DVT_48	Barn Exterior	General view of the SW Gable showing roof over Room B5	S	09/10/2019
DVT_49	Barn Interior	Room B1, general view of the NE Elevation	SSW	09/10/2019
DVT_50	Barn Interior	Room B1, detail of the timber roof framing	S	09/10/2019
DVT_51	Barn Interior	Room B1, detail of the rafter of the timber roof framing as it ties into the NW wall	S	09/10/2019
DVT_52	Barn Interior	Room B1, detail of timber partition	SSE	09/10/2019
DVT_53	Barn Interior	Room B1, detail of small slot in the SW Elevation	NE	09/10/2019
DVT_54	Barn Interior	Room B1, detail of main entrance in the SE Elevation	N	09/10/2019
DVT_55	Barn Interior	Room B2, detail of window in the NW Elevation	SE	09/10/2019
DVT_56	Barn Interior	Room B2, general view of the N corner	S	09/10/2019
DVT_57	Barn Interior	Room B2, general view of the E corner	WNW	09/10/2019
DVT_58	Barn Interior	Room B2, general view of the SE Elevation showing doorway	NW	09/10/2019
DVT_59	Barn Interior	Room B2, detail of timber roof frame	SW	09/10/2019
DVT_60	Barn Interior	Room B2, detail of timber roof frame (showing upright attached to the main beam)	SW	09/10/2019
DVT_61	Barn Interior	Room B2, detail of timber roof frame (showing rafter resting over the SE wall)	W	09/10/2019
DVT_62	Barn Interior	Room B2, detail of timber roof framing (showing upright attached to the rafters at the top)	SW	09/10/2019
DVT_63	Barn Interior	Room B2, detail of timber roof frame (showing rafter resting over the NW wall)	SW	09/10/2019
DVT_64	Barn Interior	Room B2, detail of timber roof framing (showing cross rafter attached to the main rafter on the NW side)	SW	09/10/2019
DVT_65	Barn Interior	Room B2, detail of timber roof frame	WSW	09/10/2019
DVT_66	Barn Interior	Room B2, detail of timber roof frame	SSW	09/10/2019
DVT_67	Barn Interior	Room B3, general view	SE	09/10/2019
DVT_68	Barn Interior	Room B3, general view	NW	09/10/2019
DVT_69	Barn Interior	Room B4, general view	NE	09/10/2019
DVT_70	Barn Interior	Room B4, detail of window in the SE wall	WNW	09/10/2019
DVT_71	Barn Interior	Room B4, detail of the windows in the NW wall	E	09/10/2019
DVT_72	Barn Interior	Room B4, detail of the E corner and doorway through to Room B3	W	09/10/2019
DVT_73	Barn Interior	Room B4, detail of timber roof frame	SSW	09/10/2019
DVT_74	Barn Interior	Room B5, general view of the NW wall	ESE	09/10/2019
DVT_75	Barn Interior	Room B5, detail of window in the SE wall	NW	09/10/2019
DVT_76	Barn Interior	Room B5, detail of doorway through to Room B4 in the NE wall	W	09/10/2019
DVT_77	Barn Interior	Room B5, general view of the SW gable end	NNE	09/10/2019
DVT_78	Barn Interior	Room B5, detail of the ground floor of the SW gable end	NNE	09/10/2019

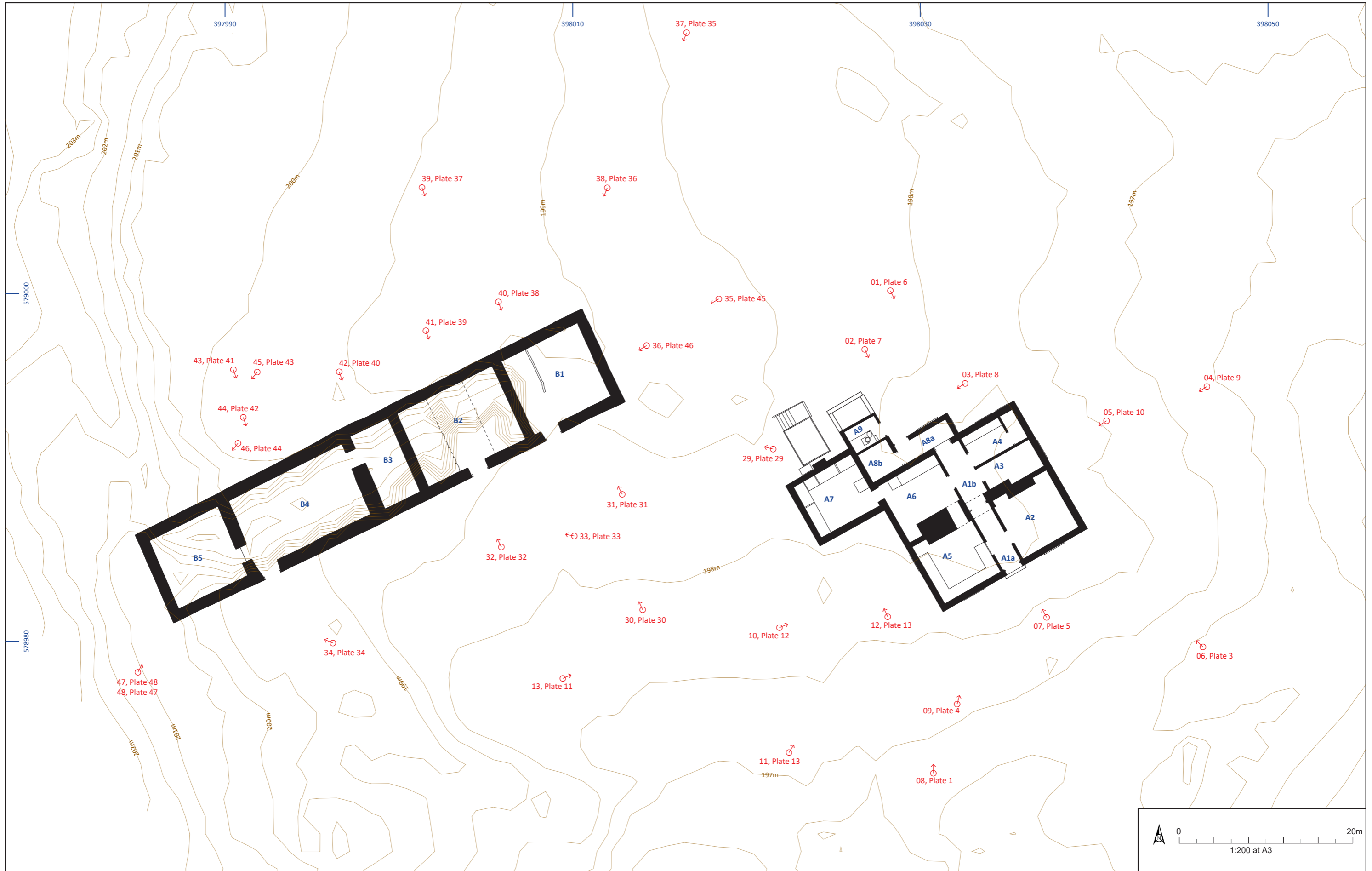


Figure 7: Divethill Quarry, Plan showing position and direction of exterior photographs and plates

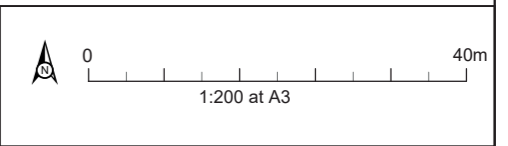
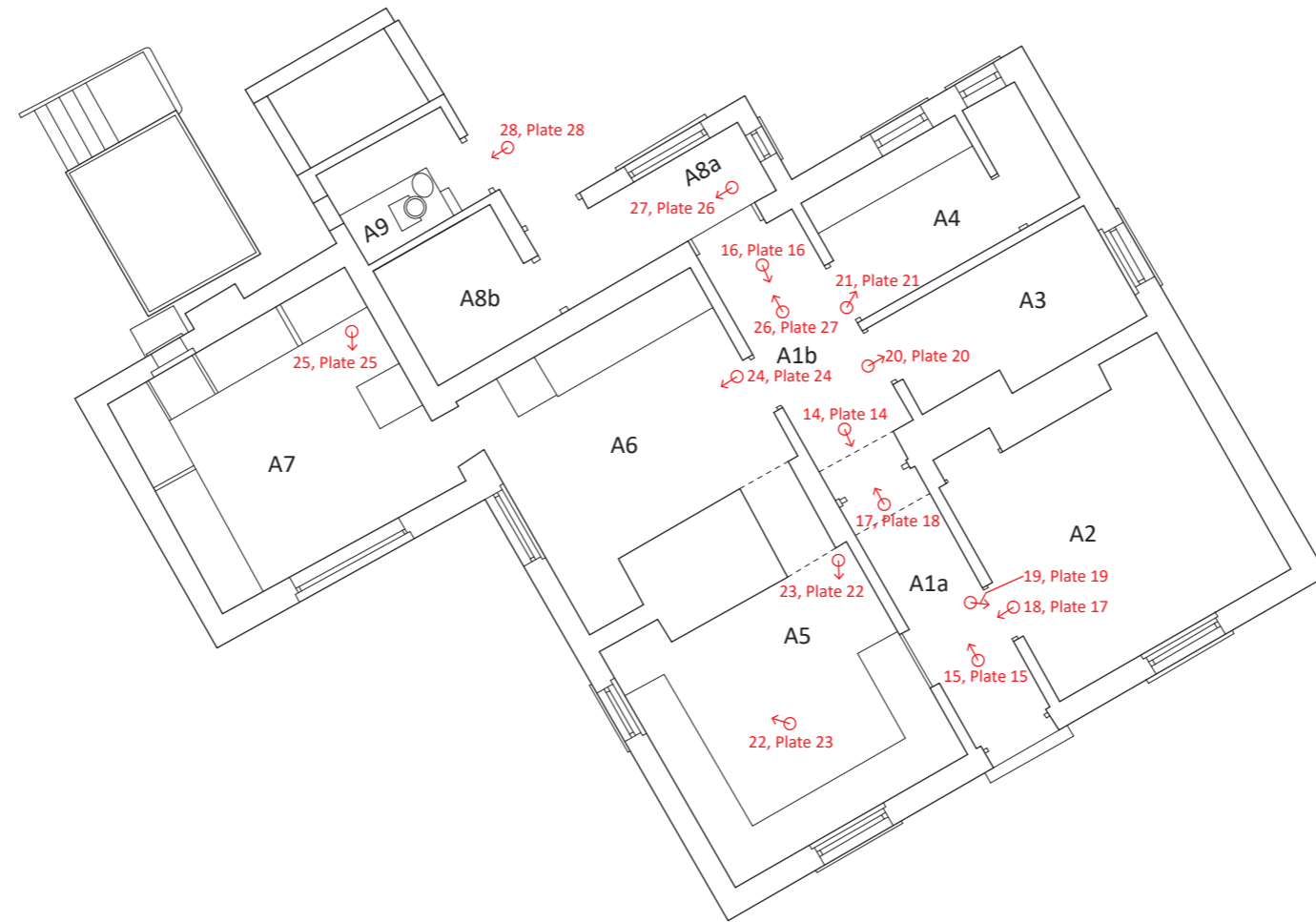
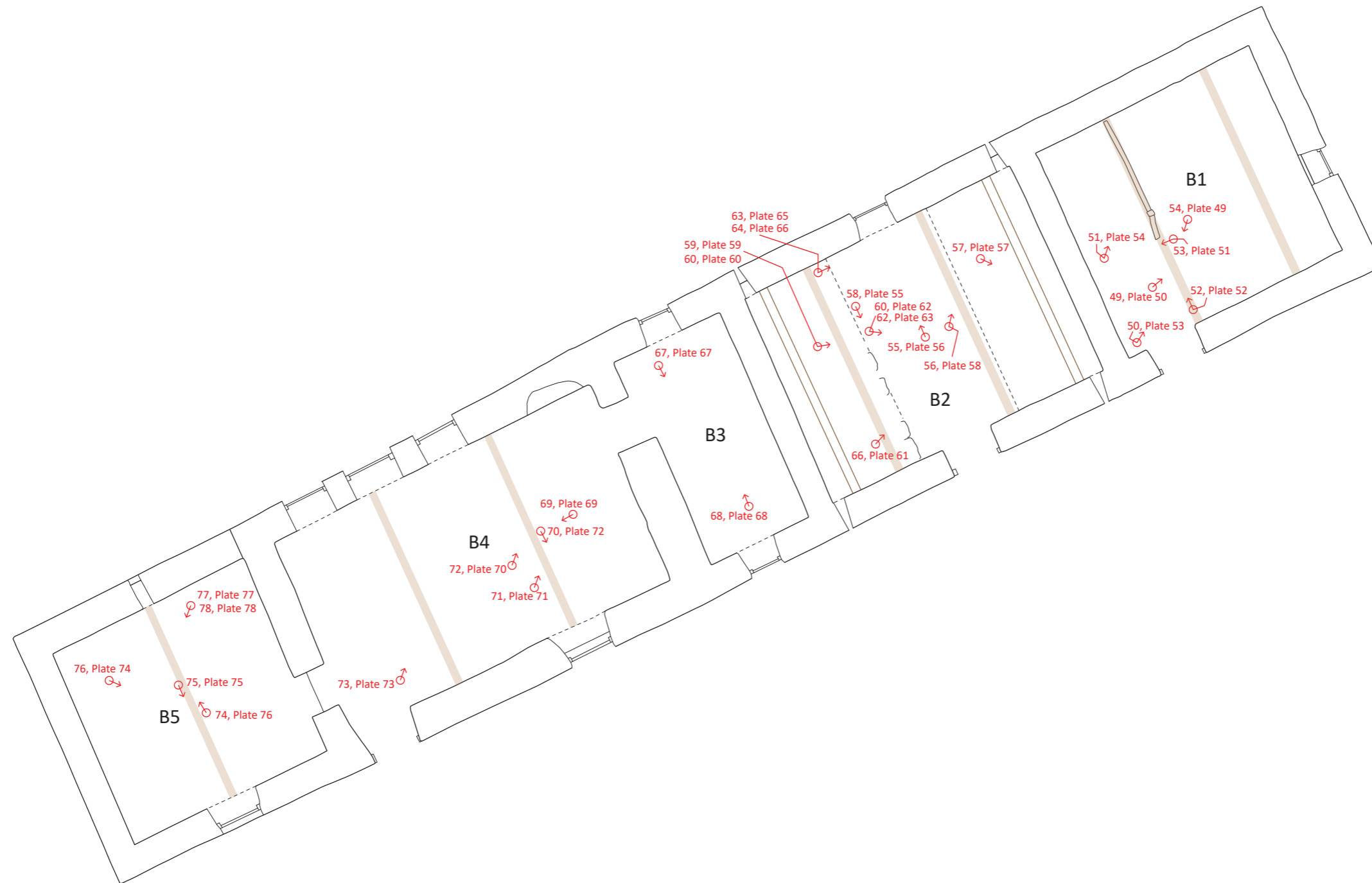



Figure A2: Building A (Cottage), ground floor plan showing position and direction of photographs and plates

01/24982/HBRREP/A2/01



KEY
 = position of timber roof truss


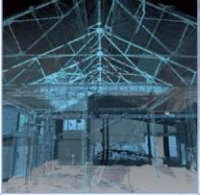
 0 40m
 1:200 at A3

Figure A3: Building B (Barn), ground floor plan showing position and direction of photographs and plates



AOC Archaeology Group, Edgefield Industrial Estate, Edgefield Road, Loanhead EH20 9SY
tel: 0131 440 3593 | fax: 0131 440 3422 | e-mail: edinburgh@aocarchaeology.com

www.aocarchaeology.com