

Quarrying, structured deposition and landscape appropriation in Ewell

ALEXIS HASLAM and REBECCA HASLAM

SUPPLEMENT CONTENTS

- S17 Fig 3 Diagram to show the relationship between land uses and phasing presented in the article (not to scale).
- S18 Fig 19 Scatter chart of the isotope values from all bone samples (ribs and femora).
- S18 Fig 20 Scatter chart showing all isotope values gained from the analysis (bone and tooth values). Light green are the values from bone samples (ribs and femora), dark blue are the values gained from the tooth samples. No great value difference can be seen between bone and tooth samples with one exception, from Inhumation 1.
- S19 Fig 21 Scatter chart showing the values from the articulated remains Inhumation 1 (light green), Inhumation 7 (orange) and infant A[289] from Quarry 2 Infill Event 3 (light blue).
- S19 Fig 22 Age distribution from epiphyseal fusion for major taxa within Quarry 1 Infill Event 1. N=total number of identifiable bones (shown in brackets).
- S20 Fig 23 Age distribution for major taxa within Quarry 1 Infill Event 2. N=total number of identifiable bones (shown in brackets).
- S20 Fig 24 Age distribution for major taxa within Quarry 1 Infill Event 3. N=total number of identifiable bones (shown in brackets).
- S21 Fig 25 Quantification of all pottery.
- S21 Fig 26 Quantification of Period 4 pottery.
- S21 Fig 27 Period 4 forms by % EVEs.
- S22 Fig 29 Quantification of Period 5 pottery.
- S22 Fig 30 Period 5 forms by % EVEs.
- S23 Fig 37 Chronological distribution of Roman coins from Ewell Sites A and B compared with Reece's (1995, 183) and Walton's (2011, 420) British means.
- S23 Fig 38 Chronological distribution of Roman coins from Ewell Sites A and B compared with coins from Chichester (Reece 1991, site 14), Gloucester (Reece 1991, site 49), and Sea Mills (Reece 1991, 59).
- S24 Fig 42 Location of test pits 1–30 and distribution of 5m² areas subject to controlled surface collection of worked flint.
- S25 Table 5 Non-metric traits of the early Roman adults
- S29 Table 6 Non-metric traits for the late Roman and Saxon adults
- S32 Table 7 Identifiable human bone fragments within Quarry 1 Infill Event 1 (Period 4)
- S33 Table 8 Identifiable human bone fragments within Quarry 1 Infill Event 2 (Period 4)
- S33 Table 9 Crude prevalence of the condition of the disarticulated bone recovered from Quarry 1
- S34 Table 10 ¹⁵N and ¹³C values of all samples
- S36 Table 11 Results of the detailed taphonomic analysis undertaken on a subsample of human bone from Quarry 1 Infill Events 1 and 2 (Period 4)

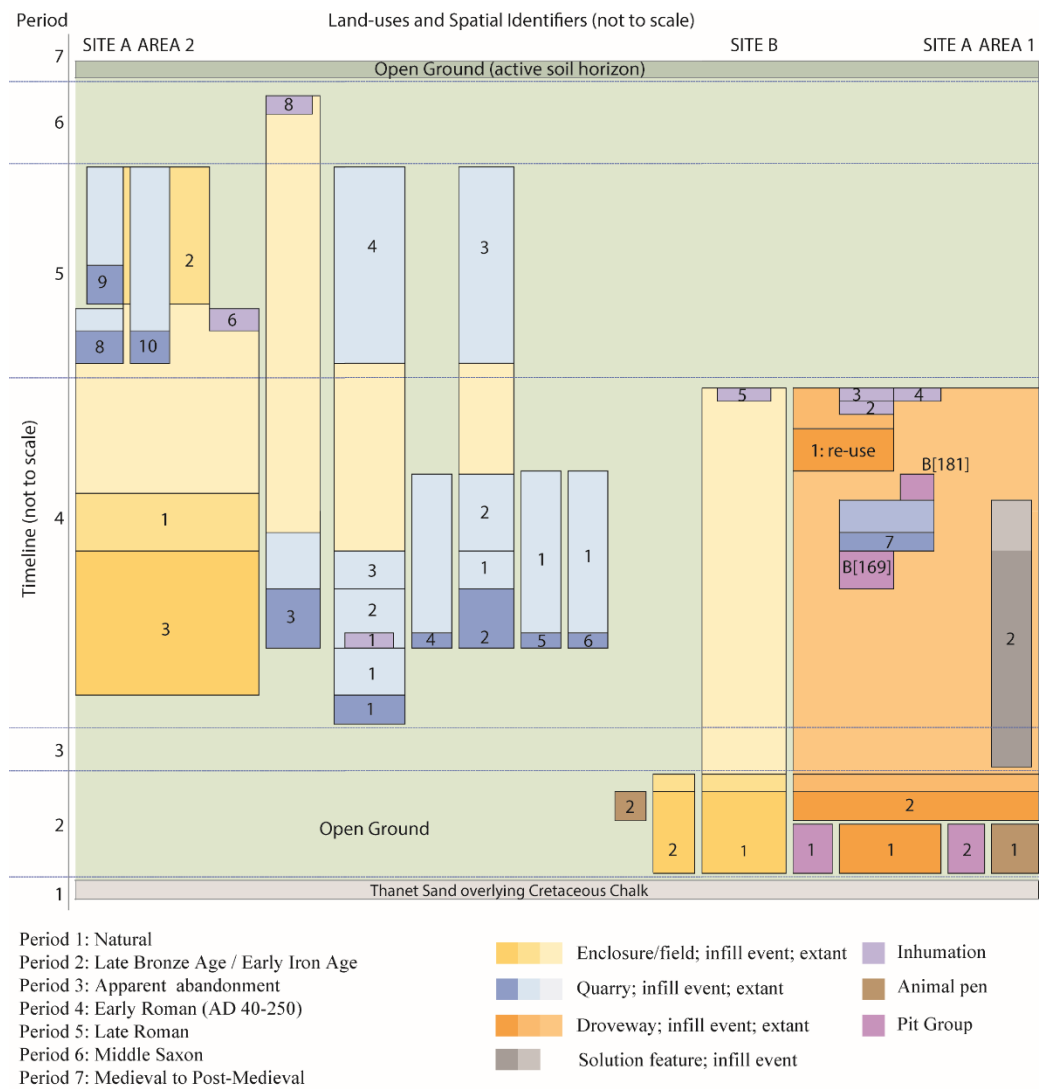


Fig 3 Diagram to show the relationship between land uses and phasing presented in the article (not to scale).

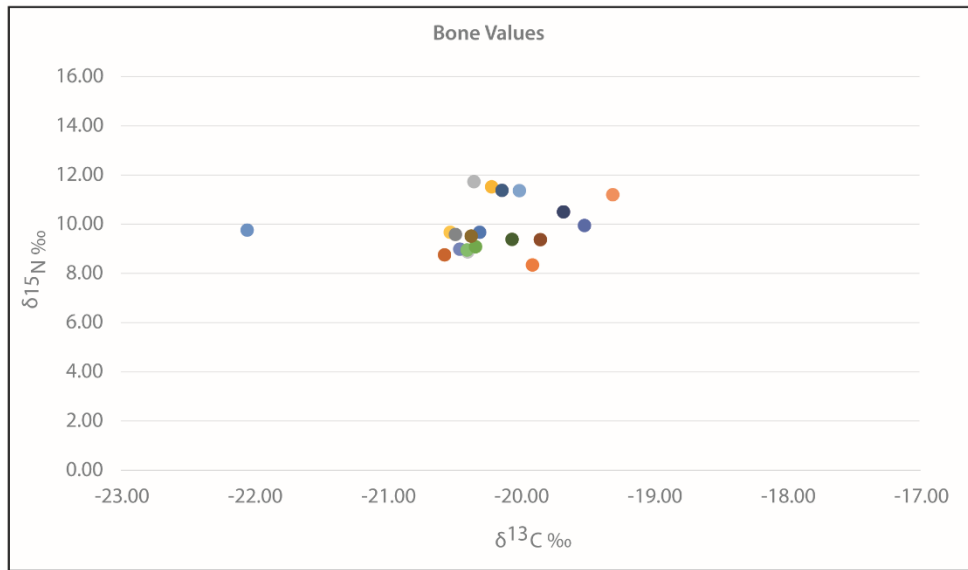


Fig 19 Scatter chart of the isotope values from all bone samples (ribs and femora).

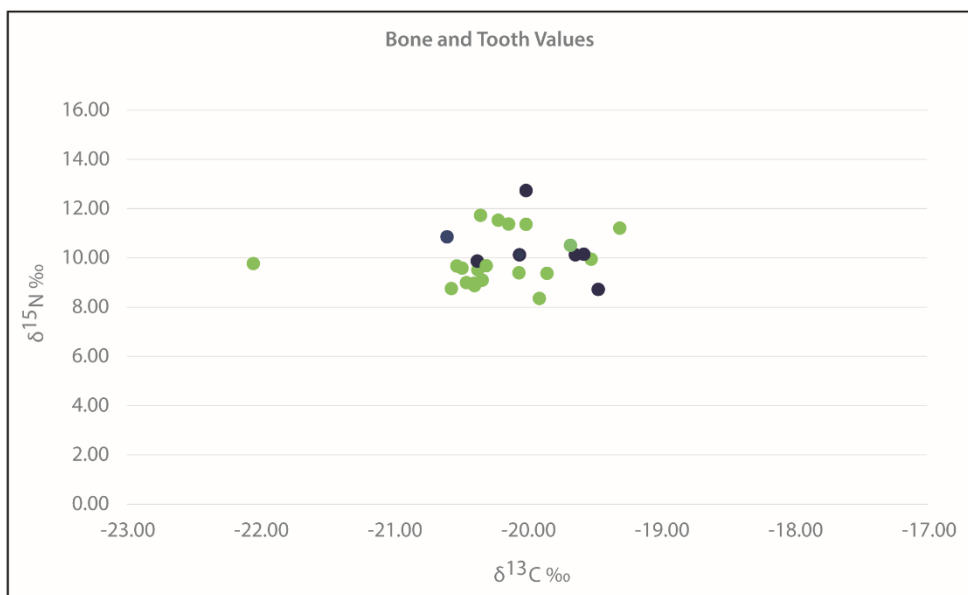


Fig 20 Scatter chart showing all isotope values gained from the analysis (bone and tooth values). Light green are the values from bone samples (ribs and femora), dark blue are the values gained from the tooth samples. No great value difference can be seen between bone and tooth samples with one exception, from Inhumation 1.

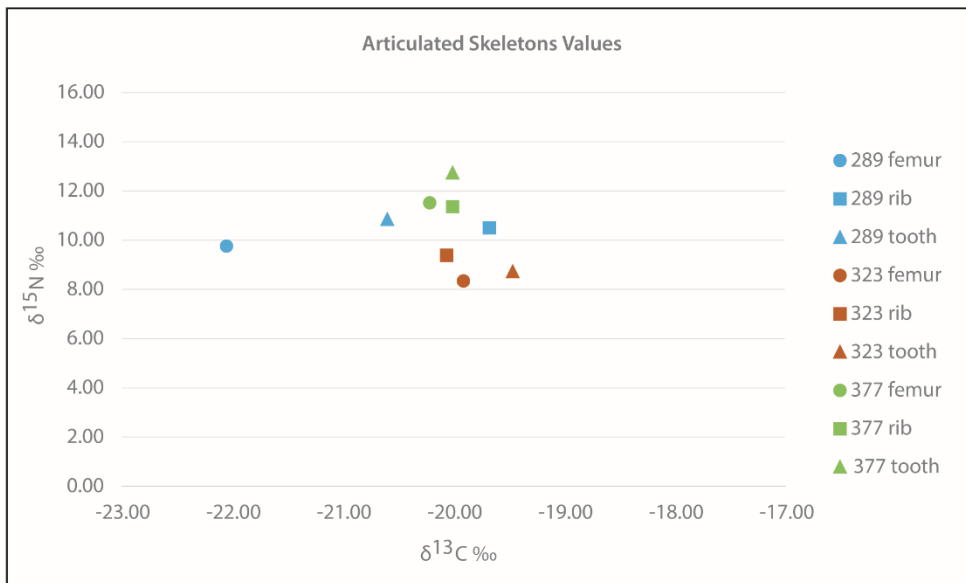


Fig 21 Scatter chart showing the values from the articulated remains Inhumation 1 (light green), Inhumation 7 (orange) and infant A[289] from Quarry 2 Infill Event 3 (light blue).

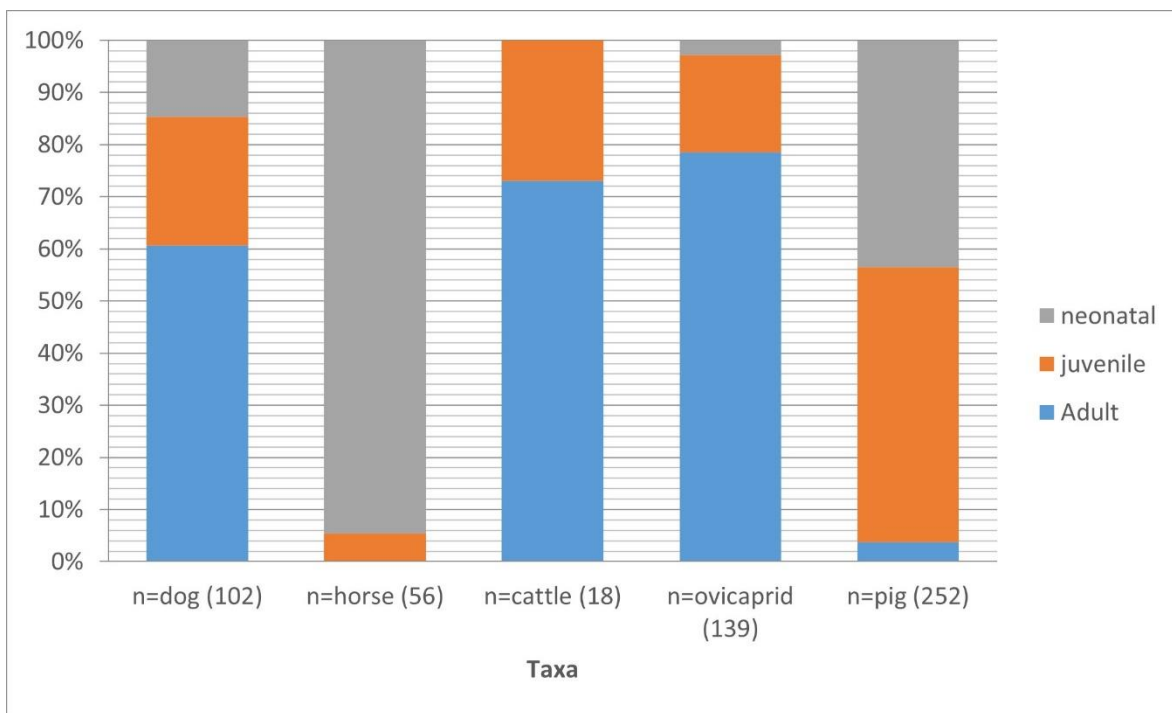


Fig 22 Age distribution from epiphyseal fusion for major taxa within Quarry 1 Infill Event 1. N=total number of identifiable bones (shown in brackets).

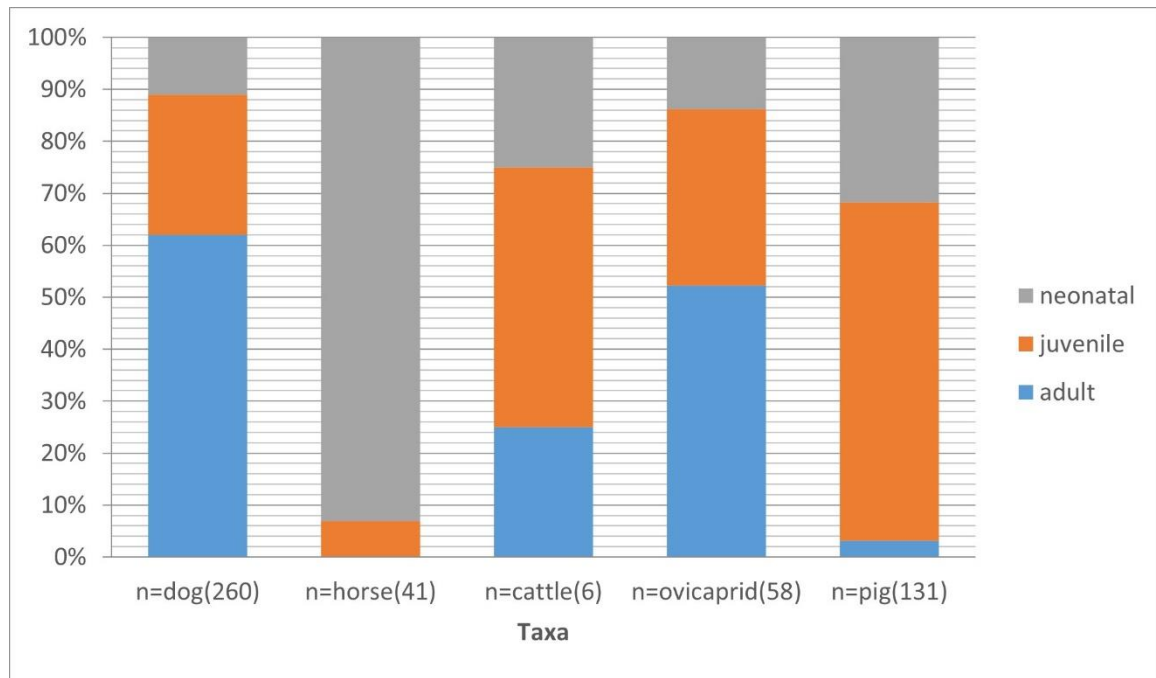


Fig 23 Age distribution for major taxa within Quarry 1 Infill Event 2. N=total number of identifiable bones (shown in brackets).

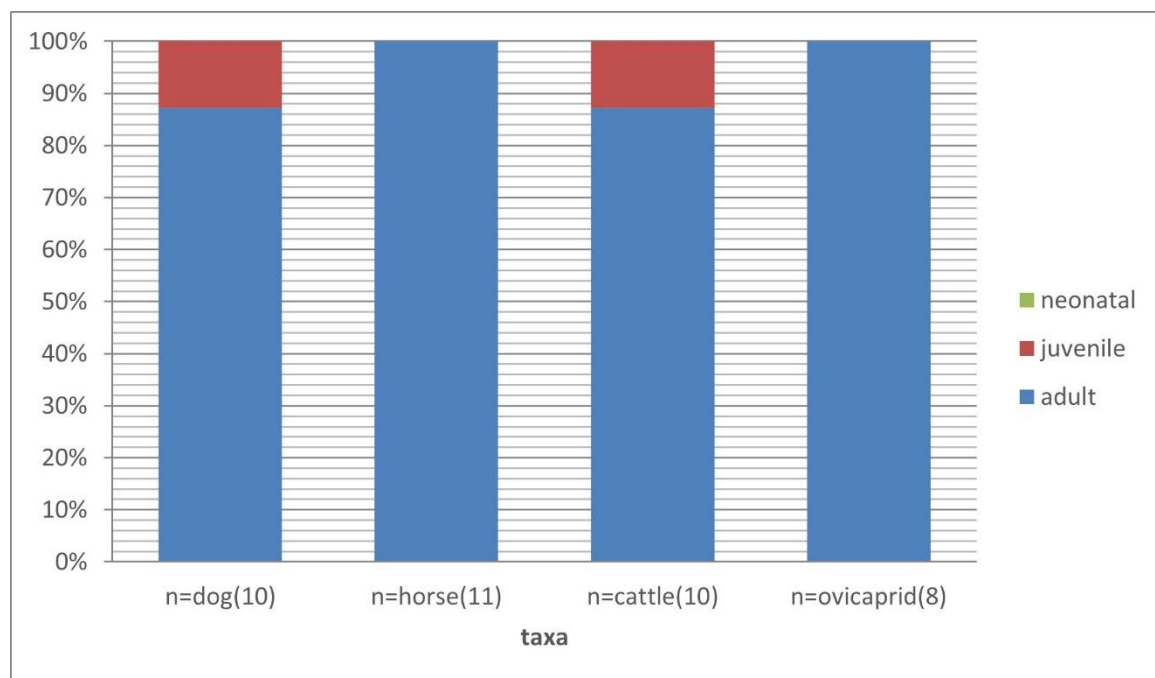


Fig 24 Age distribution for major taxa within Quarry 1 Infill Event 3. N=total number of identifiable bones (shown in brackets).

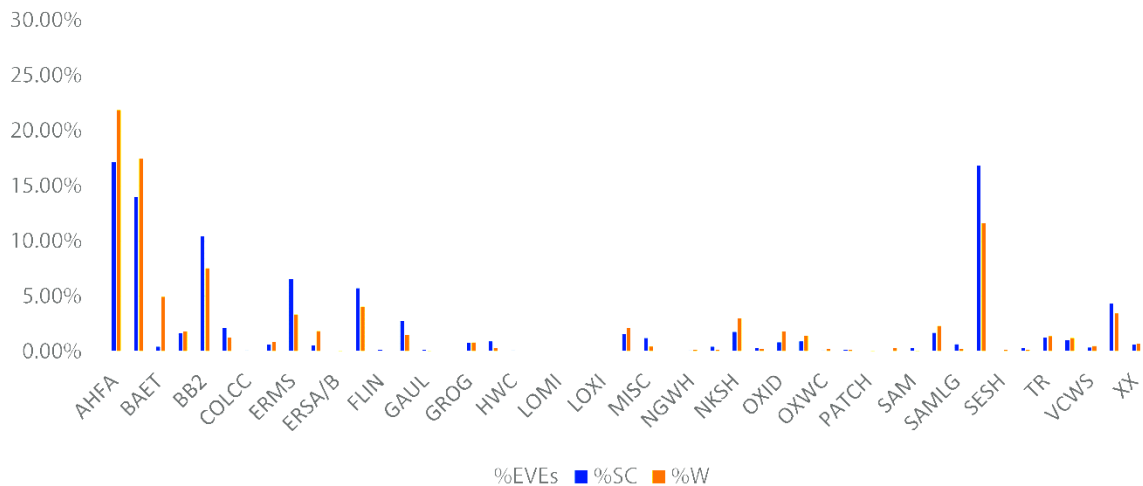


Fig 25 Quantification of all pottery.

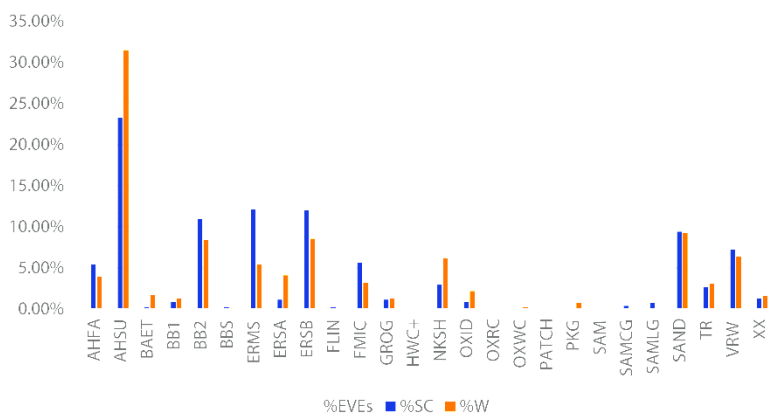


Fig 26 Quantification of Period 4 pottery.

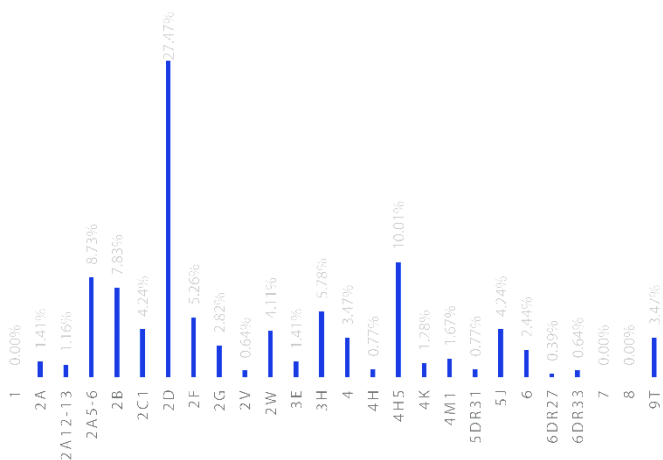


Fig 27 Period 4 forms by % EVEs.

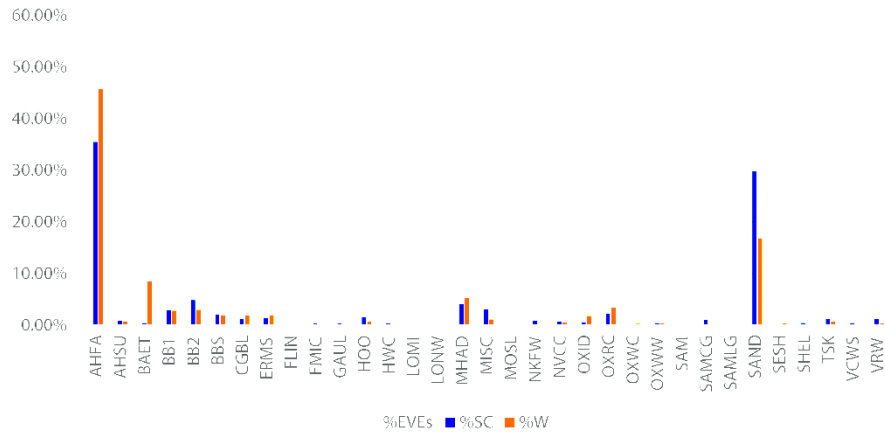


Fig 29 Quantification of Period 5 pottery.

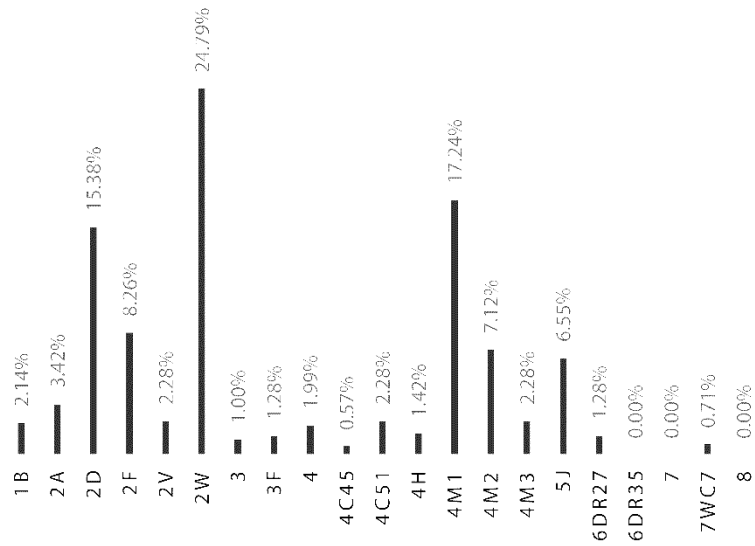


Fig 30 Period 5 forms by % EVEs.

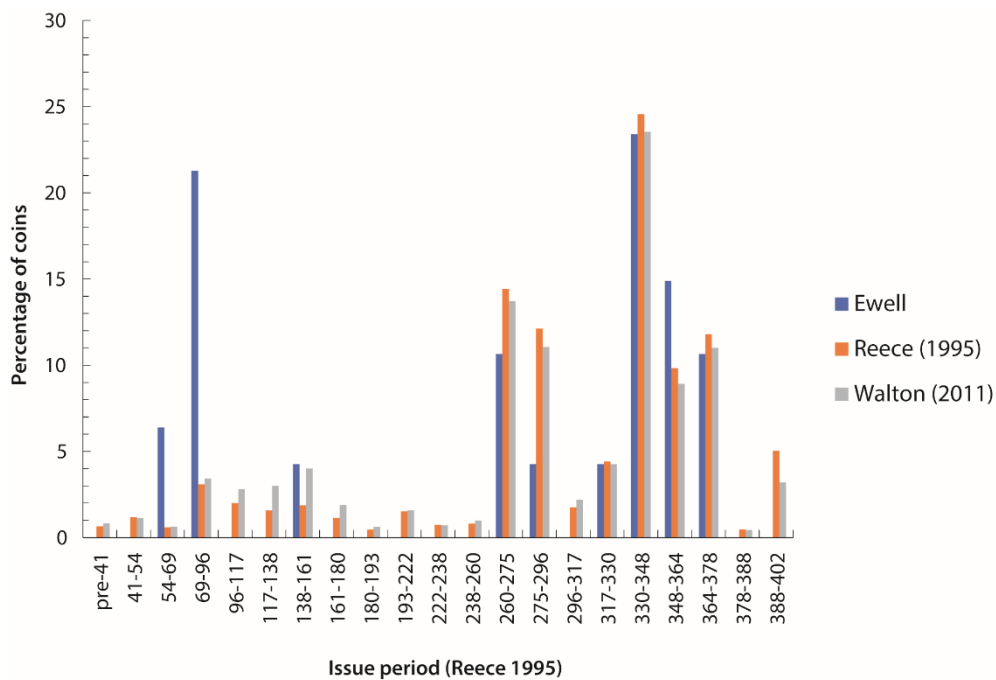


Fig 37 Chronological distribution of Roman coins from Ewell Sites A and B compared with Reece's (1995, 183) and Walton's (2011, 420) British means.

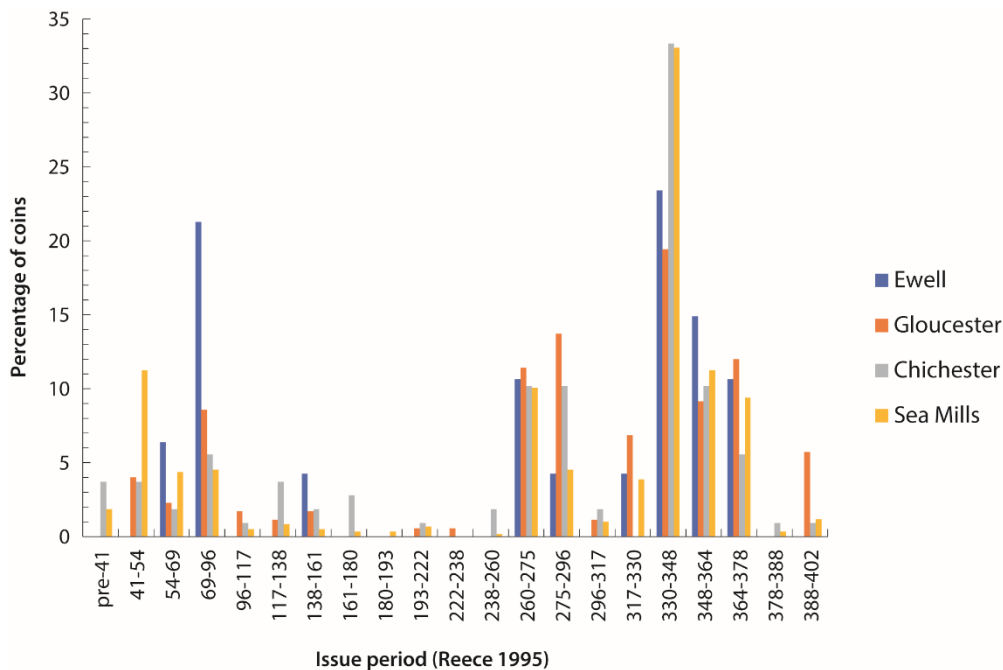


Fig 38 Chronological distribution of Roman coins from Ewell Sites A and B compared with coins from Chichester (Reece 1991, site 14), Gloucester (Reece 1991, site 49), and Sea Mills (Reece 1991, 59).



Fig 42 Location of test pits 1–30 and distribution of 5m² areas subject to controlled surface collection of worked flint.

Table 5 Table showing non-metric traits of the early Roman adults (Period 4)

Non-metric trait	Skeleton [96]	Skeleton [129]	Skeleton [205]	Skeleton [377]
Cranial non-metric traits				
Metopic Suture	0	1	Required element not present	1
Supraorbital Notch (Left / Right)	1/1	1/0	Required element not present	1/1
Supraorbital Foramen (L/R)	0/0	0/1	Required element not present	0/0
Infraorbital suture (L/R)	Required element not present	Required element not present	Required element not present	1/1
Multiple Infraorbital Foramina (L/R)	Required element not present	Required element not present	Required element not present	0/0
Zygomatiko-facial Foramina (L/R)	Required element not present	Required element not present	Required element not present	1/1
Parietal Foramen (L/R)	Required element not present	0/0	Required element not present	1/1
Epipteric Bone (L/R)	Required element not present	Required element not present	Required element not present	0/0
Coronal Ossicle (L/R)	Required element not present	0 / Right element not present	Required element not present	0/0
Bregmatic Bone	Required element not present	Required element not present	Required element not present	0
Sagittal Ossicle	Required element not present	0	Required element not present	1
Apical Bone	Required element not present	Required element not present	Required element not present	1
Lambdoid Ossicle (L/R)	Required element not present	0/0	Required element not present	1/1
Asterionic Bone (L/R)	Required element not present	0 / Right element not present	Required element not present	0 / Right element not present
Ossicle in Occipito-Mastoid Suture (L/R)	Required element not present	Required element not present	Required element not present	0/0
Parietal Notch Bone (L/R)	Required element not present	0 / Right element not present	Required element not present	0/0

Non-metric trait	Skeleton [96]	Skeleton [129]	Skeleton [205]	Skeleton [377]
Inca Bone	Required element not present	0	Required element not present	0
Condylar Canal (L/R)	Required element not present	Required element not present	Required element not present	Required element not present
Divided Hypoglossal Canal (L/R)	Required element not present	Required element not present	Required element not present	Required element not present
Flexure of Superior Sagittal Sulcus (R/L/B)	Required element not present	Required element not present	Required element not present	Required element not present
Foramen Ovale Incomplete (L/R)	Required element not present	Required element not present	Required element not present	Required element not present
Foramen Spinosum Incomplete (L/R)	Required element not present	Required element not present	Required element not present	Required element not present
Pterygo-spinous Bridge (L/R)	Required element not present	Required element not present	Required element not present	Required element not present
Pterygo-alar Bridge (L/R)	Required element not present	Required element not present	Required element not present	Required element not present
Tympanic Dihiscence (L/R)	Required element not present	Required element not present	Required element not present	Required element not present
Auditory Exostosis (L/R)	0/0	0/0	Required element not present	0/0
Mastoid Foramen (L/R)	Required element not present	Required element not present	0/0	Required element not present
Mental Foramen(L/R)	1/1	0/0	0/0	0/0
Mandibular Torus (L/R)	0/0	0/0	Required element not present	0/0
Frontal grooves (L/R)	Required element not present	0/0	Required element not present	0/0
Ethmoidal foramina (L/R)	Required element not present	Required element not present	Required element not present	Required element not present
Supratrochlear Notch or foramen (L/R)	Required element not present	Required element not present	Required element not present	Required element not present
Trochlear Spine (L/R)	Required element not present	Required element not present	Required element not present	Required element not present
Double occipital condylar facets (L/R)	Required element not present	Left element not present / 0	Required element not present	0/0
Paracondylar process	Required element not present	Required element not present	Required element not present	Required element not present

Non-metric trait	Skeleton [96]	Skeleton [129]	Skeleton [205]	Skeleton [377]
Bridging of Jugular foramen (L/R)	Required element not present	Required element not present	Required element not present	Required element not present
Pharyngeal tubercle	Required element not present	Required element not present	Required element not present	Required element not present
Clinoid bridges or spurs (L/R)	Required element not present	Required element not present	Required element not present	Required element not present
Accessory lesser palatine foramina (L/R)	Required element not present	Required element not present	Required element not present	0/0
Palatine torus (L/R)	Left element not present / 0	Required element not present	Required element not present	0/0
Maxillary torus (L/R)	Left element not present / 0	Required element not present	Required element not present	0/0
Divided parietal bone (L/R)	Required element not present	Required element not present	Required element not present	0/0
Os Japonicum (L/R)	Required element not present	Required element not present	Required element not present	0/0
Marginal tubercle (L/R)	Required element not present	Required element not present	Required element not present	0/0
Mylohyoid Bridge (L/R)	0/0	Required element not present	0/0	Required element not present
Post-cranial non-metric traits				
Atlas Lateral Bridging (L/R)	0/0	0/0	Required element not present	Required element not present
Atlas Posterior Bridging (L/R)	0/0	1/0	Required element not present	Required element not present
Accessory Transverse Foramina in 7th cervical vertebrae (L/R)	0/0	0/0	Required element not present	Required element not present
Septal Aperture	0/0	0/0	Required element not present	0 / Right element not present

Non-metric trait	Skeleton [96]	Skeleton [129]	Skeleton [205]	Skeleton [377]
Sixth Lumbar vertebrae	0	0	Required element not present	0
Accessory sacro-iliac articulation (L/R)	0/0	0/0	Required element not present	Required element not present
Supra scapular Foramen or notch form (L/R)	0/0	0/0	Required element not present	Required element not present
Accessory acromial articular facet (L/R)	0/0	0/0	Required element not present	Required element not present
Unfused acromial epiphysis (L/R)	0/0	0/0	Required element not present	Required element not present
Glenoid fossa extension (L/R)	0/0	0/0	Required element not present	Left element not present / 0
Circumflex Sulcus (L/R)	0/0	0/0	Required element not present	Required element not present
Sternal foramen	0	Required element not present	Required element not present	Required element not present
Supratrochlear Spur (L/R)	0/0	0/0	Required element not present	0 / Right element not present
Trochlear notch form (L/R)	0/0	0 / Right element not present	Required element not present	Required element not present
Allen's fossa (L/R)	0/0	0 / Right element not present	Required element not present	Required element not present
Poirier's facet or extension (L/R)	0/0	0/0	Required element not present	0 / Right element not present
Third trochanter (L/R)	0/0	0 / Right element not present	Required element not present	Required element not present
Vastus notch (L/R)	Left element not required / 0	0/0	Required element not present	Required element not present
Tibia Squatting facets (L/R)	0 / Right element not required	0 / Right element not present	Required element not present	Left element not present / 0
Talus Squatting facets (L/R)	0 / Right element not required	0/0	Required element not present	Left element not present / 0
Dental non-metric traits				
Shovel shaped incisors (L/R)	0/0	0/0	Required element not present	0/0
Carabelli's cusp (L/R)	0/0	0/0	Required element not present	0/0

Non-metric trait	Skeleton [96]	Skeleton [129]	Skeleton [205]	Skeleton [377]
Parastyle mandible (L/R)	0/0	0/0	Required element not present	0/0
Tuberculum dentale (L/R)	0/0	0/0	Required element not present	0/0
Interruption groove (L/R)	0/0	0/0	Required element not present	0/0
Peg shape (L/R)	0/0	0/0	Required element not present	0/0
Bushman canine (L/R)	0/0	0/0	Required element not present	0/0
Paracone ridge (L/R)	0/0	0/0	Required element not present	0/0
Hyper cone (L/R)	0/0	0/0	Required element not present	0/0
Enamel extension (L/R)	0/0	0/0	Required element not present	0/0
Protoconid (L/R)	0/0	0/0	Required element not present	0/0
Hypoconulid (L/R)	0/0	0/0	Required element not present	0/0
Protostylid (L/R)	0/0	0/0	Required element not present	0/0

Table 6 Table showing non-metric traits for the late Roman and Saxon adults (Periods 5 and 6)

Non-metric trait	Late Roman Skeleton [204]	Saxon Skeleton [323]
Cranial non-metric traits		
Metopic Suture	Required element not present	0
Supraorbital Notch (Left / Right)	Required element not present	1/1
Supraorbital Foramen (L/R)	Required element not present	0/0
Infraorbital suture (L/R)	Required element not present	0/1
Multiple Infraorbital Foramina (L/R)	Required element not present	0/0
Zygomatoco-facial Foramina (L/R)	Required element not present	1/0
Parietal Foramen (L/R)	Required element not present	1/1
Epipteric Bone (L/R)	Required element not present	0/0
Coronal Ossicle (L/R)	Required element not present	0/0
Bregmatic Bone	Required element not present	0
Sagittal Ossicle	Required element not present	0
Apical Bone	Required element not present	1

Non-metric trait	Late Roman Skeleton [204]	Saxon Skeleton [323]
Lambdoid Ossicle (L/R)	Required element not present	0/0
Asterionic Bone (L/R)	Required element not present	1/0
Ossicle in Occipito-Mastoid Suture (L/R)	Required element not present	0/0
Parietal Notch Bone (L/R)	Required element not present	1/0
Inca Bone	Required element not present	0
Condylar Canal (L/R)	Required element not present	0/0
Divided Hypoglossal Canal (L/R)	Required element not present	0/0
Flexure of Superior Sagittal Sulcus (R/L/B)	Required element not present	1
Foramen Ovale Incomplete (L/R)	Required element not present	Required element not present
Foramen Spinosum Incomplete (L/R)	Required element not present	Required element not present
Pterygo-spinous Bridge (L/R)	Required element not present	Required element not present
Pterygo-alar Bridge (L/R)	Required element not present	Required element not present
Tympanic Dihiscence (L/R)	Required element not present	1/0
Auditory Exostosis (L/R)	Required element not present	0/0
Mastoid Foramen (L/R)	Required element not present	0/0
Mental Foramen(L/R)	Required element not present	0/0
Mandibular Torus (L/R)	Required element not present	0/0
Frontal grooves (L/R)	Required element not present	0/0
Ethmoidal foramina (L/R)	Required element not present	0/0
Supratrochlear Notch or foramen (L/R)	Required element not present	0/0
Trochlear Spine (L/R)	Required element not present	0/0
Double occipital condylar facets (L/R)	Required element not present	0/0
Paracondylar process	Required element not present	0/0
Bridging of Jugular foramen (L/R)	Required element not present	0/0
Pharyngeal tubercle	Required element not present	Required element not present
Clinoid bridges or spurs (L/R)	Required element not present	Required element not present
Accessory lesser palatine foramina (L/R)	Required element not present	0/0
Palatine torus (L/R)	Required element not present	0/0
Maxillary torus (L/R)	Required element not present	0/0
Divided parietal bone (L/R)	Required element not present	0/0
Os Japonicum (L/R)	Required element not present	0/0
Marginal tubercle (L/R)	Required element not present	0/0
Mylohyoid Bridge (L/R)	Required element not present	0/0
Post-cranial non-metric traits		
Atlas Lateral Bridging (L/R)	Required element not present	0/0
Atlas Posterior Bridging (L/R)	Required element not present	0/0
Accessory Transverse Foramina in 7 th cervical vertebrae (L/R)	Required element not present	0/1
Septal Aperture	Required element not present	0/0
Sixth Lumbar vertebrae	Required element not present	1

Non-metric trait	Late Roman Skeleton [204]	Saxon Skeleton [323]
Accessory sacro-iliac articulation (L/R)	Required element not present	0/0
Supra scapular Foramen or notch form (L/R)	Required element not present	0/0
Accessory acromial articular facet (L/R)	Required element not present	0/0
Unfused acromial epiphysis (L/R)	Required element not present	0/0
Glenoid fossa extension (L/R)	Required element not present	0/0
Circumflex Sulcus (L/R)	Required element not present	0/0
Sternal foramen	Required element not present	Required element not present
Supratrochlear Spur (L/R)	Required element not present	0/0
Trochlear notch form (L/R)	Required element not present	0/0
Allen's fossa (L/R)	Required element not present	0/0
Poirier's facet or extension (L/R)	Required element not present	0/0
Third trochanter (L/R)	Required element not present	0/0
Vastus notch (L/R)	Required element not present	Left element not present / 0
Tibia Squatting facets (L/R)	0/0	0/0
Talus Squatting facets (L/R)	0/0	Required element not present
Dental non-metric traits		
Shovel shaped incisors (L/R)	Required element not present	0/0
Carabelli's cusp (L/R)	Required element not present	0/0
Parastyle mandible (L/R)	Required element not present	0/0
Tuberculum dentale (L/R)	Required element not present	0/0
Interruption groove (L/R)	Required element not present	0/0
Peg shape (L/R)	Required element not present	0/0
Bushman canine (L/R)	Required element not present	0/0
Paracone ridge (L/R)	Required element not present	0/0
Hyper cone (L/R)	Required element not present	0/0
Enamel extension (L/R)	Required element not present	0/0
Protoconid (L/R)	Required element not present	0/0
Hypoconulid (L/R)	Required element not present	0/0
Protostylid (L/R)	Required element not present	0/0

Table 7 Identifiable human bone fragments within Quarry 1: Infill Event 1 (Period 4)

Skeletal Element	No of identifiable human bone fragments within Infill group 1	% of identifiable human bone fragments within Infill group 1
Clavicle	4	0.85%
Femur	19	4.03%
Fibula	18	3.82%
Foot (inc. tarsals, metatarsals, and phalanges)	46	9.77%
Hand (inc. carpals, metacarpals, and phalanges)	87	18.47%
Humerus	9	1.91%
Patella	5	1.06%
Pelvis (including ilium, ischium, pubis, and sacrum)	26	5.52%
Radius	13	2.76%
Rib	94	19.96%
Scapula	5	1.06%
Skull (including cranium, mandible, and loose dentition)	52	11.04%
Sternum	2	0.42%
Tibia	6	1.27%
Ulna	12	2.55%
Vertebrae	73	15.50%

Table 8: Identifiable human bone fragments within Quarry 1: Infill Event 2 (Period 4)

Skeletal Element	No. of identifiable human bone fragments within Infill group 1	% of identifiable human bone fragments within Infill group 1
Clavicle	3	1.60%
Femur	5	2.67%
Fibula	3	1.60%
Foot (inc. tarsals, metatarsals, and phalanges)	36	19.25%
Hand (inc. carpals, metacarpals, and phalanges)	6	3.21%
Humerus	9	4.81%
Patella	3	1.60%
Pelvis (including ilium, ischium, pubis, and sacrum)	27	14.44%
Radius	6	3.21%
Rib	14	7.49%
Scapula	6	3.21%
Skull (including cranium, mandible, and loose dentition)	41	21.93%
Sternum	1	0.54%
Tibia	22	11.76%
Ulna	4	2.14%
Vertebrae	1	0.54%

Table 9 Crude prevalence of the condition of the disarticulated bone recovered from Quarry 1

Condition of disarticulated bone	% of skeletal fragments within the disarticulated assemblage
Very good	6.38%
Good	24.47%
Good-Moderate	23.76%
Moderate	24.47%
Moderate-Poor	14.89%
Poor	6.03%

Table 10 ^{25}N and ^{13}C values of all samples

Context No	Element	Age & Sex	Land use	Period	$\delta^{15}\text{N}$ ‰	$\delta^{13}\text{C}$ ‰
A[377]	femur	Middle aged to older probable female	Inhumation 1	4: Early to Mid-Roman	11.5	-20.2
A[377]	Molar M3	Middle aged to older probable female	Inhumation 1	4: Early to Mid-Roman	12.7	-20
A[377]	rib	Middle aged to older probable female	Inhumation 1	4: Early to Mid-Roman	11.3	-20
A[404]	femur		Quarry 1: Infill Event 1	4: Early to Mid-Roman	9	-20.3
A[405]	femur		Quarry 1: Infill Event 1	4: Early to Mid-Roman	11.3	-20.1
A[407]	rib		Quarry 1: Infill Event 1	4: Early to Mid-Roman	8.8	-20.4
A[413]	incisor		Quarry 1: Infill Event 1	4: Early to Mid-Roman	10.1	-20
A[413]	rib		Quarry 1: Infill Event 1	4: Early to Mid-Roman	9.6	-20.5
A[414]	rib		Quarry 1: Infill Event 1	4: Early to Mid-Roman	8.9	-20.4
A[415]	Molar M2		Quarry 1: Infill Event 1	4: Early to Mid-Roman	10.1	-19.5
A[416]	rib		Quarry 1: Infill Event 1	4: Early to Mid-Roman	8.9	-20.4
A[417]	femur		Quarry 1: Infill Event 1	4: Early to Mid-Roman	9.3	-19.8
A[419]	molar		Quarry 1: Infill Event 1	4: Early to Mid-Roman	10.1	-19.6
A[420]	femur		Quarry 1: Infill Event 1	4: Early to Mid-Roman	9.5	-20.4
A[420]	rib		Quarry 1: Infill Event 1	4: Early to Mid-Roman	9.6	-20.3
A[424]	femur		Quarry 1: Infill Event 1	4: Early to Mid-Roman	9.5	-20.3
A[424]	molar M1		Quarry 1: Infill Event 1	4: Early to Mid-Roman	9.8	-20.3
A[424]	rib		Quarry 1: Infill Event 1	4: Early to Mid-Roman	8.7	-20.5
A[350]	femur		Quarry 1: Infill Event 2	4: Early to Mid-Roman	11.7	-20.3
A[385]	femur		Quarry 1: Infill Event 2	4: Early to Mid-Roman	9.9	-19.5
A[385]	rib		Quarry 1: Infill Event 2	4: Early to Mid-Roman	11.2	-19.3
A[289]	femur	Infant	Quarry 2: Infill Event 3	5: Late Roman	9.7	-22

Context No	Element	Age & Sex	Land use	Period	$\delta^{15}\text{N}$ ‰	$\delta^{13}\text{C}$ ‰
A[289]	incisor	Infant	Quarry 2: Infill Event 3	5: Late Roman	10.8	-20.6
A[289]	rib	Infant	Quarry 2: Infill Event 3	5: Late Roman	10.5	-19.6
A[323]	femur	Young to middle-aged adult male	Inhumation 7	6: Saxon	8.3	-19.9
A[323]	molar M3	Young to middle-aged adult male	Inhumation 7	6: Saxon	8.7	-19.4
A[323]	rib	Young to middle-aged adult male	Inhumation 7	6: Saxon	9.3	-20

Table 11 Results of the detailed taphonomic analysis undertaken on a subsample of human bone from Quarry 1: Infill events 1 and 2 (Period 4)

Context	Land-Use	Skeletal Element	Taphonomic Observations
A334	Quarry 1: Infill Event 2	Rib	Pitting
A350	Quarry 1: Infill Event 2	Femur	Deep scratches along shaft - Gnawing mark
A377	Inhumation 1	Femur	Splitting on breaks- Scratches along and slightly diagonal to shaft - Pitting
A377	Inhumation 1	Rib	Light scratches - Pitting
A378	Quarry 1: Infill Event 2	Rib	Scratches
A385	Quarry 1: Infill Event 2	Femur	Many anomalies - Pitting
A385	Quarry 1: Infill Event 2	Rib	Pitting - Scratches
A386	Quarry 1: Infill Event 2	Rib	Light scratches
A387	Quarry 1: Infill Event 2	Metatarsal 1	Big indentation (puncture?) on distal end; damage on proximal end
A393	Quarry 1: Infill Event 1	Rib	Pitting
A404	Quarry 1: Infill Event 1	Femur	Very smooth surface - Pitting - Scratches along shaft
A405	Quarry 1: Infill Event 1	Femur	Pitting - Light scratches
A406	Quarry 1: Infill Event 1	Rib	Pitting / Punctures - Light scratches
A407	Quarry 1: Infill Event 1	Rib	Pitting
A409	Quarry 1: Infill Event 1	Rib	Pitting / Punctures
A410	Quarry 1: Infill Event 1	Rib	Pitting - Scratches
A413	Quarry 1: Infill Event 1	Rib	Pitting - Scratch vertical too shaft
A414	Quarry 1: Infill Event 1	Rib	Pitting
A415	Quarry 1: Infill Event 1	Mandible	Only taphonomic damage
A416	Quarry 1: Infill Event 1	Humerus	Damage on distal end - Scratches and punctures (?) on shaft - Greater and lesser tubercle not recognisable(unfused?)
A416	Quarry 1: Infill Event 1	Rib	Pitting - Scratches along shaft
A416	Quarry 1: Infill Event 1	Sacpula	Most of blade missing; puncture on blade; cut close to lateral border
A417	Quarry 1: Infill Event 1	Femur	Punctures on head - Damage between head and neck - Damage to trochanters - Marks on shaft - Damage to condyles - Puncture (?) on condyle
A417	Quarry 1: Infill Event 1	Femur	Pitting - Scratches
A418	Quarry 1: Infill Event 1	Rib	Light scratches
A420	Quarry 1: Infill Event 1	Femur	Scratches along shaft - Splitting on breaks
A420	Quarry 1: Infill Event 1	Humerus	Mark on posterior side of shaft - Damage at capitulum - Punctures (?) on shaft
A420	Quarry 1: Infill Event 1	Pelvis	Puncture on ilium under iliac crest (superior) - Puncture on lateral side under iliac tubercle - Puncture (?) left of acetabulum
A420	Quarry 1: Infill Event 1	Rib	Pitting
A422	Quarry 1: Infill Event 1	Rib	Pitting / Punctures - Scratches
A423	Quarry 1: Infill Event 1	Rib	Scratches
A424	Quarry 1: Infill Event 1	Femur	Pitting - Scratches along shaft
A424	Quarry 1: Infill Event 1	Rib	Pitting - Scratches vertical to shaft