

SHEFFIELD MANOR

SITE RECORDS

VOL. 9

1973 (2)

---

AREA: ~~XVII~~

TRENCHES: BAULK 7-7A, 7A-17D  
7B 17C 17E 18B 'OSCAR'  
(EXTN)

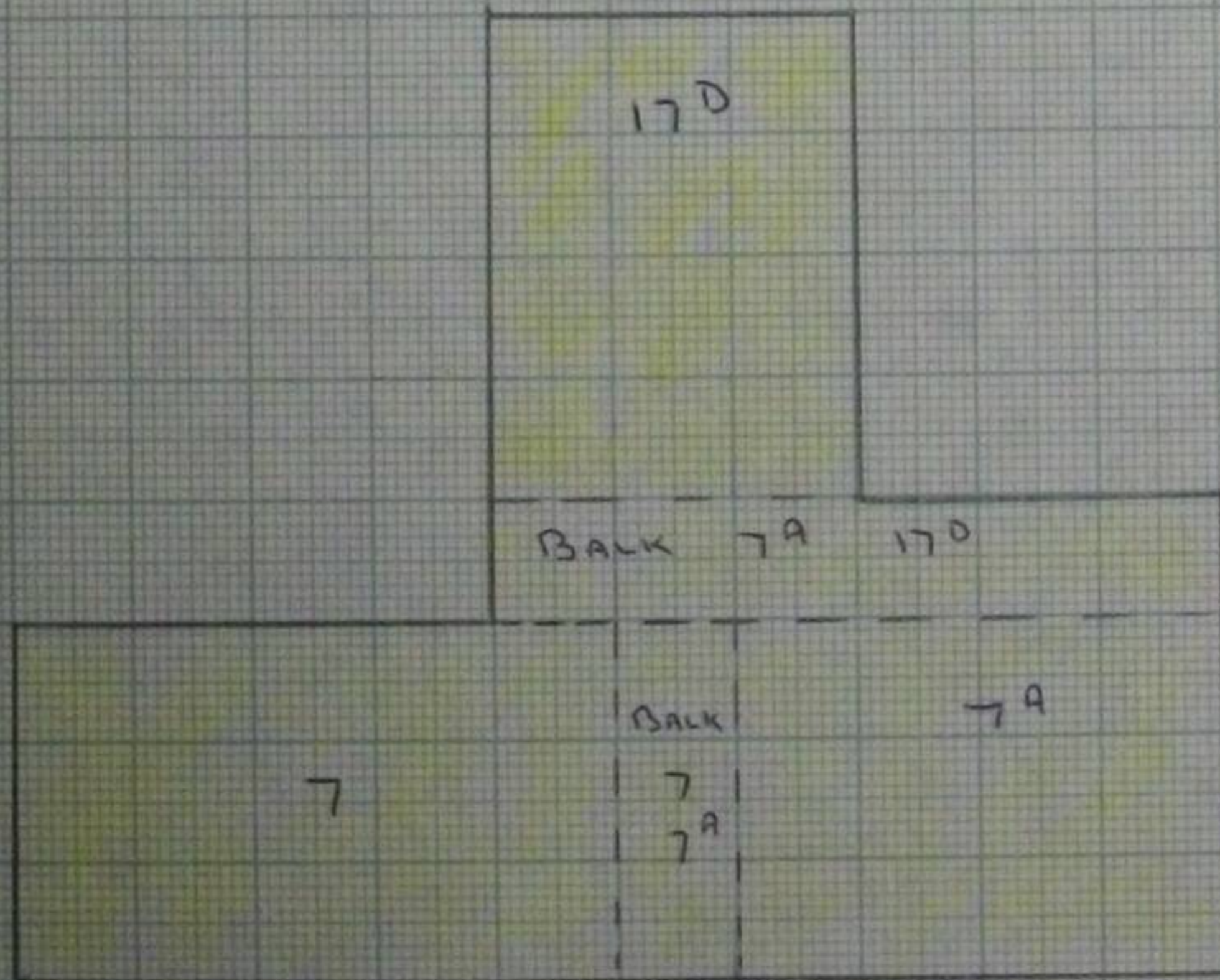


FOR SKETCH PLAN OF THOSE TRENCHES SUPERVISED  
BY J. S. McCracken + WHOSE NOTES

ARE IN BOOKS I + II SM73

SEE PG. X BOOK I

OSCAR TRENCH - IN YELLOW





# INDEX

## TRENCH

PG.

17<sup>c</sup>

~~18<sup>D</sup>~~ (18 B EXTENSION)

17<sup>E</sup>

BALK 7 7<sup>A</sup>

BALK 7<sup>A</sup> 17<sup>D</sup>

7<sup>B</sup>

"OSCAR TRENCH

10-11

20-21

24-27

36-39

46-49

55-57

61-81

F 43

63, 67, 69

F 46

71, 67

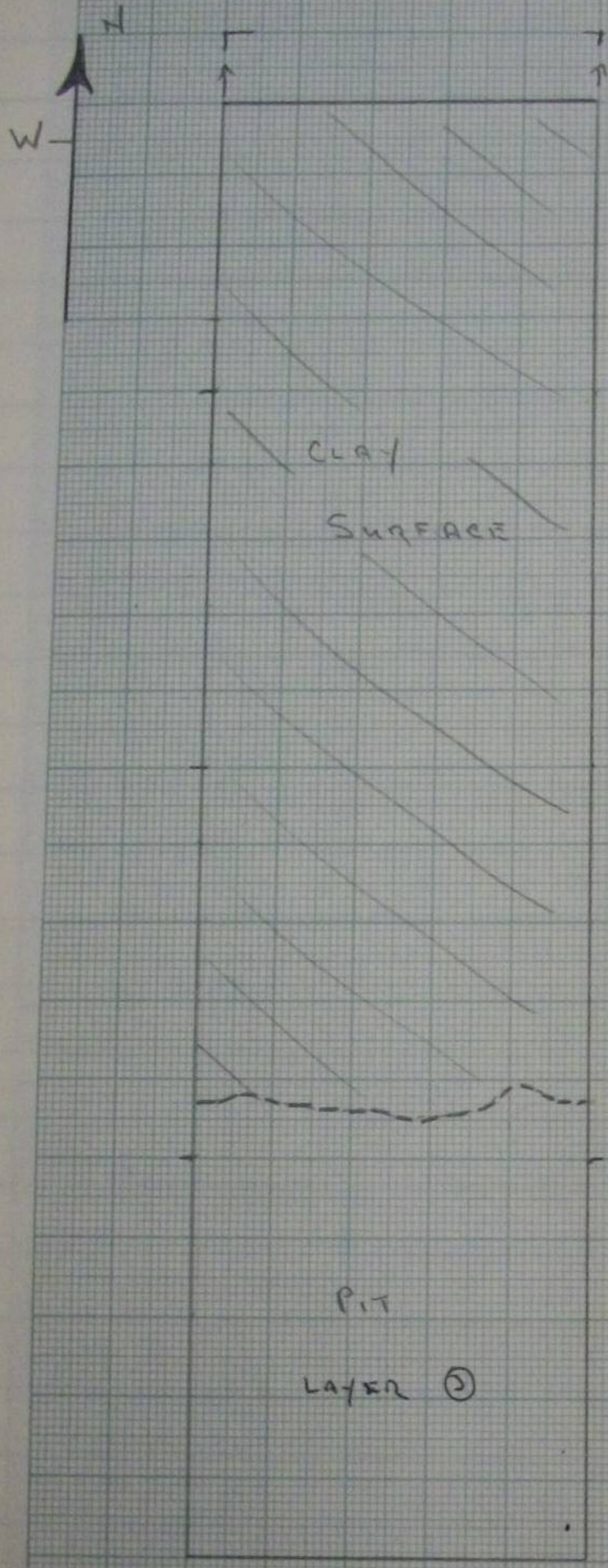
F 49

73, 75

F 50

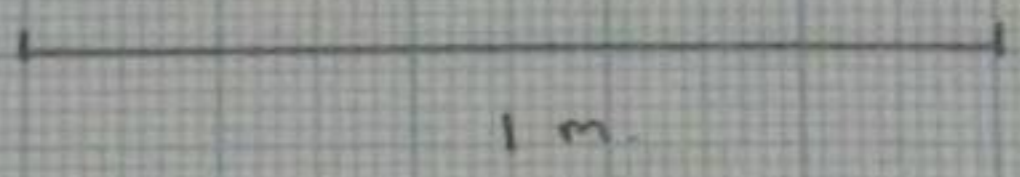
73-75, 79





To SHOW EDGE OF  
"CLAY PIT"

Scale 1:20



PIT  
LAYER ②



SM 73 / XXIII / 17<sup>c</sup>

4m x 1m

Turf removed, not considered a layer

LAYER ① TOPSOIL 0 - 20 cm.

- black topsoil removed over entire trench to depth approx. 20 cm. Finds of a mixed nature.

LAYER ② BROWN SOIL WITH SMALL STONES 20 - 25/35 cm.

- layer varied in thickness between 5 - 15 cm. At the southern end of the trench rubble was reached 35 cm below surface but in the N portion clay was reached <sup>25</sup>/<sub>35</sub> cm below surface.

The soil was loose - texture with small stones.

Finds were not numerous - some bone.

LAYER ③ RUBBLE

- the rubble was picked out + the edge of the trench defined. (See plan p. 10)

LAYER ④ CONTAMINATED CLAY

- a thin layer of trampled - soil / stones was removed (3 cm) to show the surface of the clay.

No features. Clay edge of rubble pit defined

Finds included bone, pottery, charcoal + bits of iron.



SM 73 / XXIII / ~~18D~~ (NOTE 1973 To be called 18B to avoid confusion w. 1974 18D.)

2 m x 1 m  
NOW CALLED 18B EXTN  
TO AVOID CONFUSION  
WITH 18B VOL. 8!  
(JB'80.)

Turf removed not considered a layer.

18D is a N-S extension to 17A 18A running 2 m S from the southern edge of 17A 18A, 1 m wide. (See plan, <sup>Site Vol 8</sup> Book I p. 37\*)

LAYER ① Topsoil 0 - 30 cm.

- black topsoil removed over entire trench to depth approx. 28/30 cm. The finds were numerous + of a mixed nature.

LAYER ② BROWN SOIL WITH COMPACT RUBBLE 30 - 40/45 cm.

- this layer varied between 10 + 15 cm, being shallowest along the S section. The brown soil with packed small stones overlay a mixture of clay + stone (cobbles). These occur at approx. the same depth as the cobbles in Trench 8 8A + maybe connected.

layers  
③?

Finds included a brick, pottery + bone.

LAYER ③ STONE RUBBLE + YELLOW SAND c 46 cm.

- this layer was immediately below the brown soil layer ②. Cobbles of a type similar to those found in Trench 8 + 8A were found in this layer + there are most likely a continuation of these. ? Perhaps these cobbles are a track for access to the rubble pit - used for carts to get the clay out IF the pit were used as a clay-pit for clay for the MAJOR Kilns?

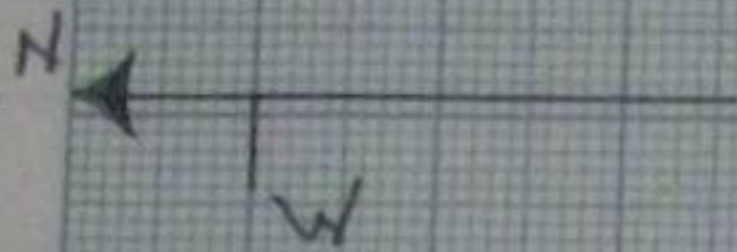
Planned pg. 20.

\* More likely connected with rubble in 17A 18A

+ Mud in Ocean Trench.

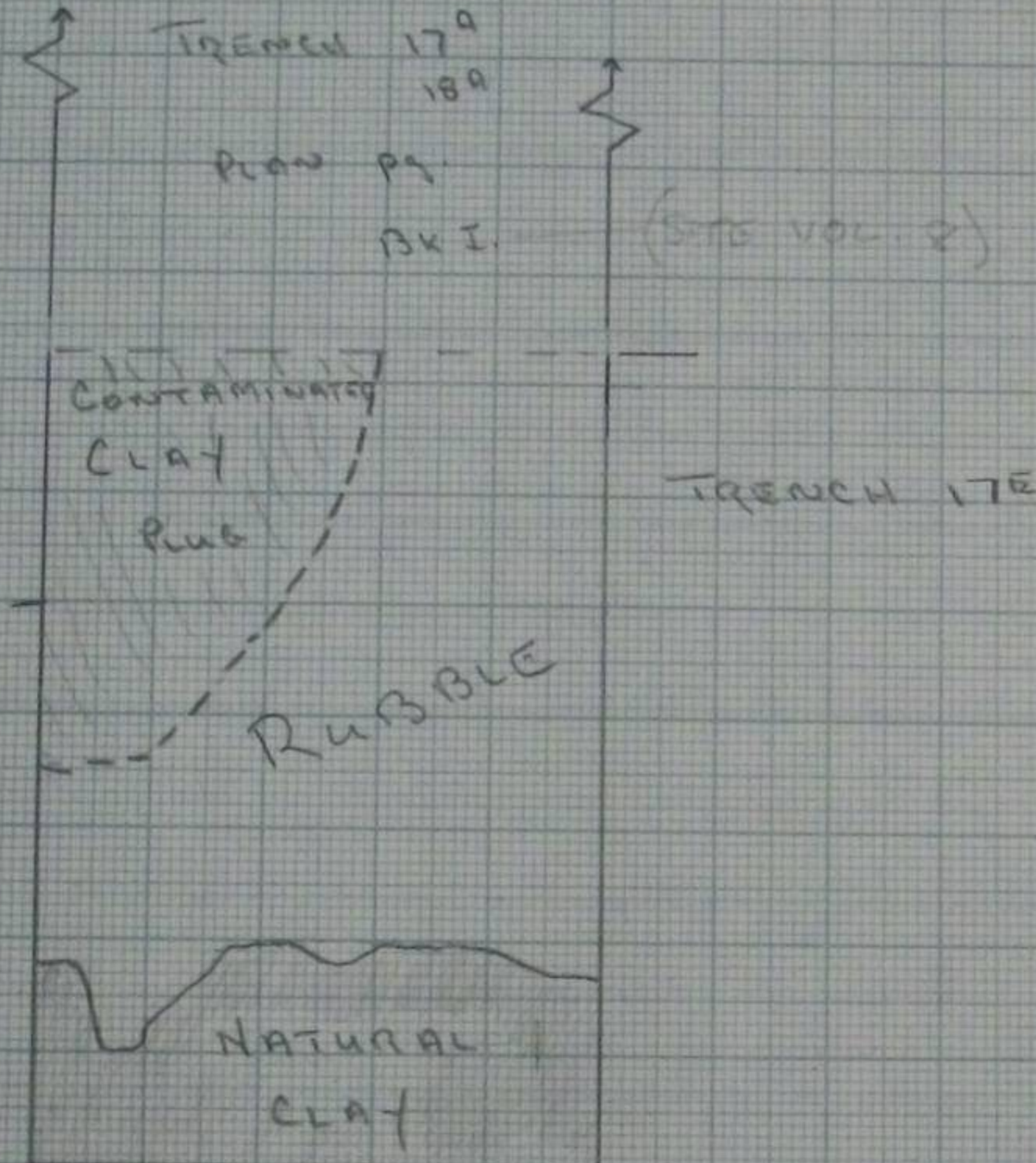


Bottom Layer ③



To Show EDGE of  
 CLAY PIT ( 17A 180 17C )  
 ( 18A 18B )

SCALE 1:20





SM 73/XXIII/17E

1 m x

Turf Removed, Not Considered a Layer

LAYER ① Topsoil 0 - 25 cm.

- black topsoil removed over entire trench. Layer approx. 25 cm. thick, contained numerous finds of a mixed nature.

LAYER ② 25 - 30/33 cm.

- a layer of brown soil approx. 5-8 cm thick was removed over the entire trench. This layer of brown soil with compact rubble overlay a clayey surface. This clayey surface is assumed to be clay with rubble + not natural. It appears similar to the "clay plug" in the <sup>nw</sup> corner of Trench 17<sup>A</sup> 18<sup>A</sup> (pg 1).

Finds in the brown soil not very numerous; some glass-bone.

LAYER ③ CONTAMINATED CLAY 30/33 - 38/50 cm.

- this layer of 'contaminated' clay was removed over the eastern 2/3<sup>rd</sup> of the trench in an effort to define the edge of the pit (? a clay pit for mana kiln?). The natural edge was found extending approx. 35 cm out from the W edge (See plan p. 24)

As well, the "clay plug" found in the NW edge of the N + W sections of Trench 17<sup>A</sup> 18<sup>A</sup> was found + planned. At this point work was stopped because of the high water table in Trench 17<sup>A</sup> 18<sup>A</sup> (THE TRENCH WAS FULL !!)

(Now numbered layer ④ for convenience \$80)

so does ③ overlay ④?

③ This layer was termed "contaminated" because it contained frags of brick + rubble + overlay rubble.

⑤ The top of the natural clay surface was 38 cm below

④ the surface, the top of the clay plug 50 cm below surface. The



layer thus varied between 15 + 20 cm. in thickness.

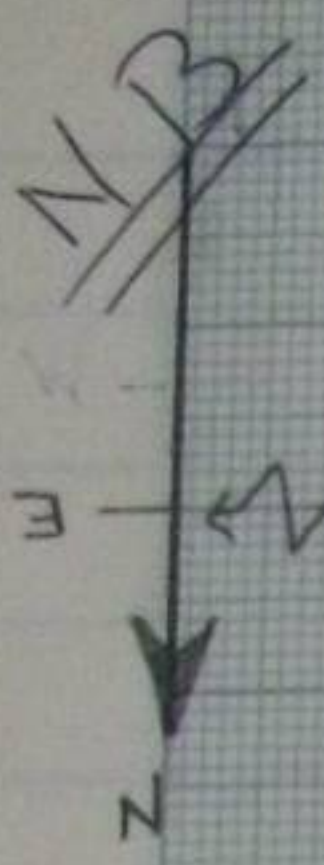
Finds were very few - some glass + bone.

No Further work - WATER !!



Compass  
REVERSED!!

SCALE 1:20



Fog  
Plan  
7A  
  
SEE  
BK. I  
Pg.  
70

Fog Plan  
7A SEE  
BK. I  
Pg. 56

BALK 7A 170  
PLAN PG. 46

○ STONE

x MORTAR FRAG.



SM 73 / XXIII / BALK 7

3m x 1m

7A

- This is the 1 metre balk E side Trench 7, W side of Trench 7A.

TURF REMOVED, NOT CONSIDERED A LAYER.

LAYER ① Topsoil 0 - 20 cm.

- black topsoil removed over entire length of balk. Varied between 18 - 20 cm thick. There is a definite slope from S (high end) to N. More small stones appearing in top layer ② near S section than in rest of balk.

Finds were numerous + of mixed nature.

LAYER ② BROWN SOIL WITH SMALL STONES 20 - 28/30 cm.

- Brown soil with small stones comprised this layer, removed over the entire trench. Approx. 10 cm. thick.

At this point some stones were beginning to appear but they appear to be rubble (wall tumble) as was found in the E portion of Trench 7 + W portion of Trench 7A.

Mortar flecks are beginning to show up across the balk, the heaviest concentration being towards the N end.

Finds included a large amt. of bone, again similar to what was found in Trench 7, east portion.

LAYER ③ 30 - 35 cm. BROWN SOIL, STONES + MORTAR FRAGS.

- a layer of brown soil mixed with small rubble + mortar frags. was removed over the entire balk to bring to the level of 7A ④

17<sup>D</sup> ④, - Balk 7A 17<sup>D</sup> ③. This layer was approx 5 cm thick

was planned (pg 36).

The rubble (stones) show no obvious pattern. The mortar frags.



were spread over the entire area but the heaviest concentration was to the ~~west~~ north. This links F [42] Trench 7 with F [43] Trench 7<sup>A</sup> + the mortar found in 17<sup>D</sup> + Balk 7<sup>A</sup>, 17<sup>D</sup>. Finds were not numerous.

\*

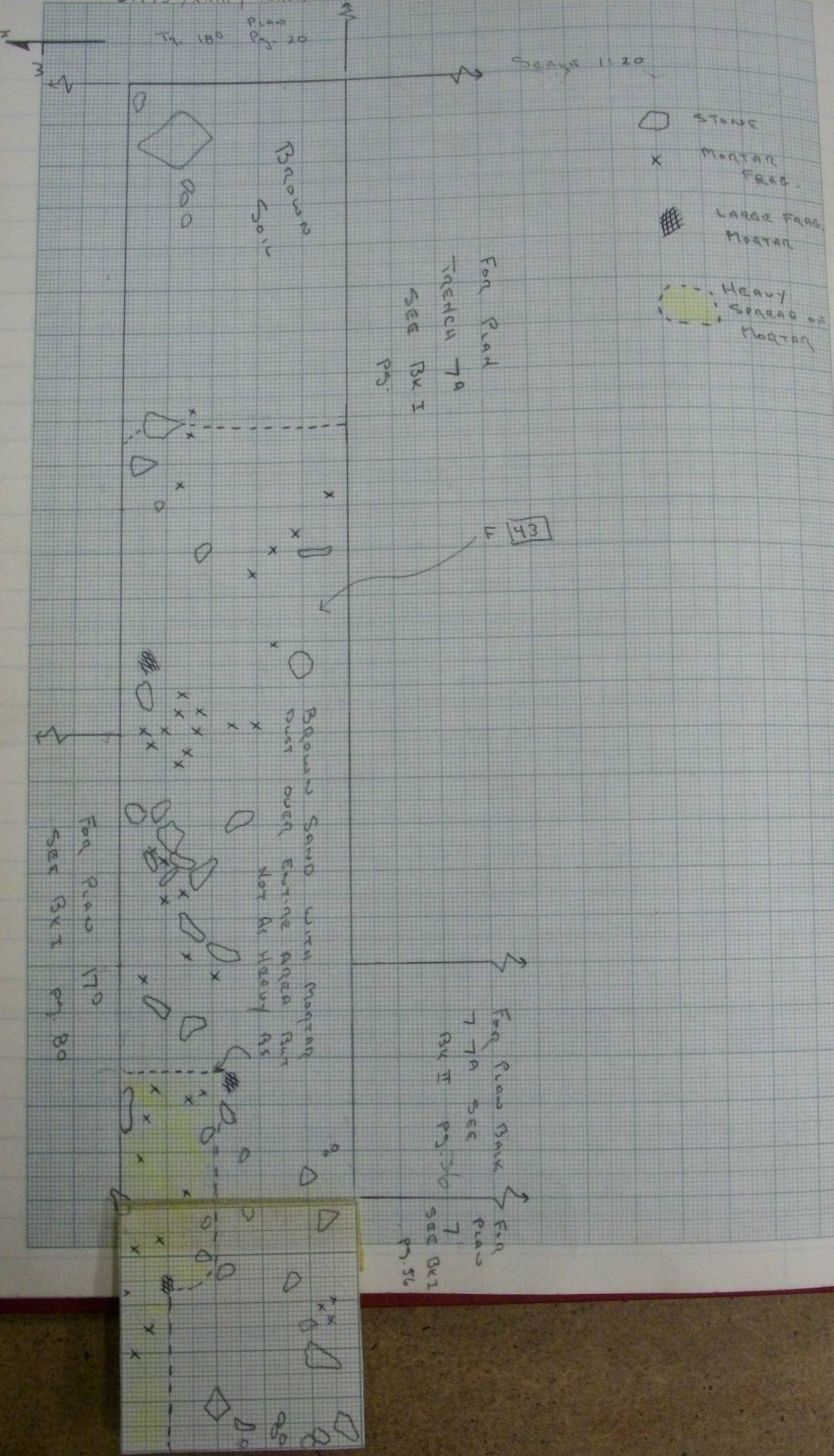
At this point notes for Balk 7 7<sup>A</sup> were combined with notes for Trench 7, 7<sup>A</sup>, Balk 7<sup>A</sup>, 17<sup>A</sup>, Trench 17<sup>D</sup>. See Book II pg 60.



Plan Pg. 20  
Tr. 180

SCALE 1:20

- STONE
- x MORTAR FRAG.
- ▣ LARGE FRAG. MORTAR
- ▭ HEAVY SPREAD OF MORTAR





Sm 73/xxiii / BALK 7<sup>A</sup> 17<sup>D</sup>

6 x 1 m

The balk between 7<sup>A</sup> + 17<sup>D</sup> (1 metre wide) was removed + continued as a one metre strip along the N section of 7<sup>A</sup> to ent into Trench 8. (See plan). In effect, Trench 7<sup>A</sup> has been extended 1 metre to the N. along its entire N section.

Turf Removed, Not Considered A Layer

LAYER ① Topsoil 0 - 20 cm.

- a layer of black topsoil was removed over the entire trench to a depth of approx. 20 cm. Finds were numerous of mixed nature.

LAYER ② BROWN SOIL WITH SMALL STONES 20 - 25 / 30<sup>cm</sup>

- a layer of brown soil mixed with stones, loose in texture + varying between 5 + 10 cm (deepest at the junction with trench 8) was removed over the entire balk.

Finds were still mixed so a new layer number was given to the 4 next layer, also of brown soil. Finds included bone, pottery (of various dates!) + pipe stems.

Plaster began to appear across the balk near the N section at a point where it meet Trench 17<sup>D</sup>.

LAYER ③ BROWN SOIL WITH SMALL STONES 30 - 35 cm.

- a layer of brown soil with small stones was removed across the trench to define any limits of plaster/mortar spread + to bring the balk to the same level as Trench 7<sup>A</sup>, Trench 17<sup>D</sup> and Balk 7 7<sup>A</sup>.

The balk was then planned (See pg. 46). It is significant that the line of mortar/subble in Trench 7<sup>A</sup> F [43] continues



across the balk, also as a straight line. There is no sign of a wall, a beam, or in fact, anything, for the mortar to have fallen against to have produced ~~the~~ such a straight line. The concentration, or spread of mortar, is not as dense across the bottom of Layer ③ Balk 7<sup>A</sup> 17<sup>D</sup> as in F [43] Trench 7<sup>A</sup> except in an area in the NW corner of Balk 7<sup>A</sup> 17<sup>D</sup> <sup>southward</sup> marked on the plan in yellow. There is mortar <sup>on the rest</sup> of the feature, however. The difference is that in the area marked 'yellow', there is a continuous spread. This spread of mortar/subble under the balk has also been termed F [43]. This would connect F [42] + F [43] as the Balk connects the spreads in the respective trenches. Also the removal of Balk 7 7<sup>A</sup> proves F [42] + F [43] are also connected.

The stones appear to be random scatter, there is no pattern, ~~except~~ except they are found on the eastern edge of F [43] + not beyond (with one exception, Balk 7<sup>A</sup> 17<sup>D</sup>).

F [43] must also be connected with the mortar + rubble spread in Trench 17<sup>D</sup> ~~with~~ which also has an edge to its spread. ? Perhaps inside of a room?

Finds were not that numerous - included pottery + bone.

\* At this point notes for Balk 7 7<sup>A</sup> were combined with notes for Trench 7<sup>A</sup> Trench 17<sup>D</sup>, Balk 7 7<sup>A</sup> + Trench 7. See Book II pg 60.



50cm x 2m

TURF REMOVED, NOT CONSIDERED A LAYER

LAYER ① Topsoil 0-25 cm.

- a layer of black topsoil removed over entire trench.

Finds not numerous, + of a mixed nature.

There was a modern post hole in the <sup>SE</sup> corner of the trench containing wood, nails + some strips of plastic wrap. This was cleaned out as best as possible.

LAYER ② Brown Soil (Reddish-Brown) 25-45 cm.

- with this layer of brown soil (20 cm thick) have appeared a number of large stones, possibly tumble from a ? field wall running along Main Lane. These have been removed.

The layer was composed of a reddish-brown soil loose in texture + very deep. A number of stones were removed from the layer as these were assumed to be wall tumble. At the bottom of the layer (between 42 + 45 cm) flecks of mortar began to appear.

There was no pattern observed in the stones + mortar.

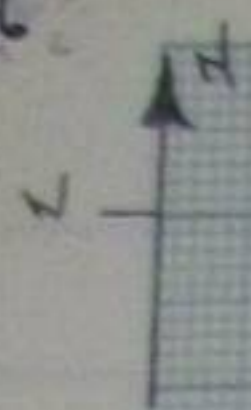
Finds were very few - some bone, a shell + a few pieces of pottery.

LAYER ③ LOOSE MORTAR DUST, BROWN SOIL, SMALL STONES 45-60 cm.

- this layer, approx. 15 cm. thick, was removed over the entire trench. The layer was composed of a thick deposit of mortar frags, dust, + small stones mixed with a brown soil. It was of very loose texture + composition. There was no pattern to the stones nor

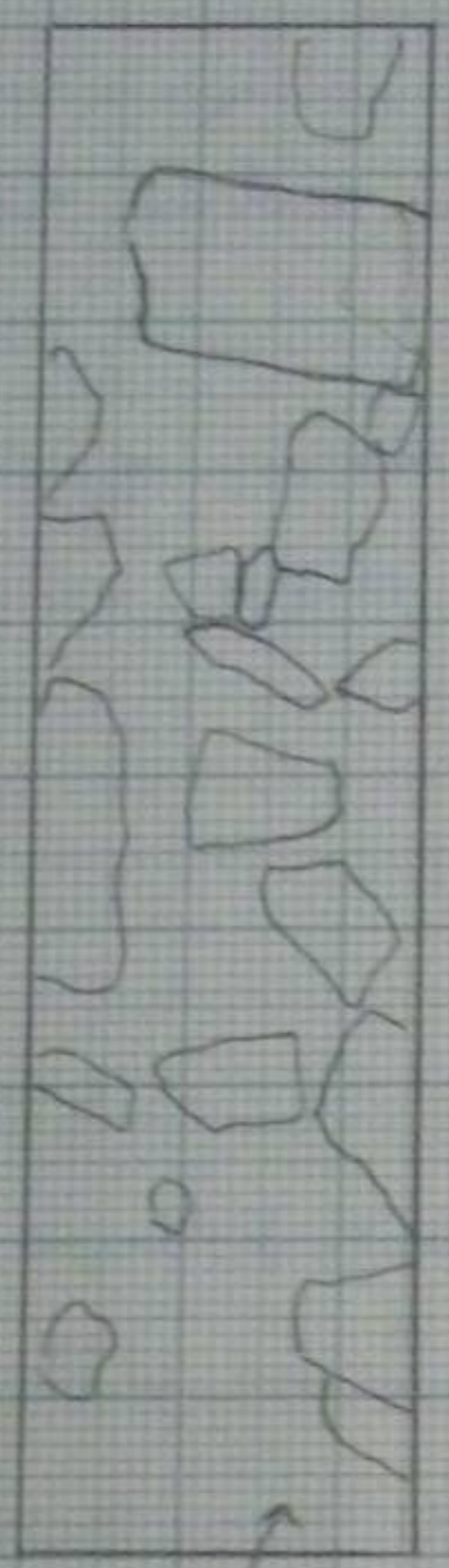
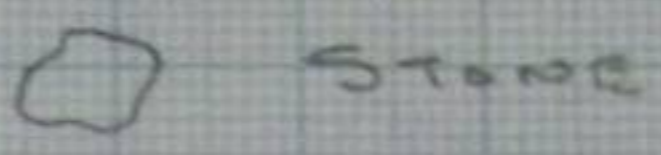


56

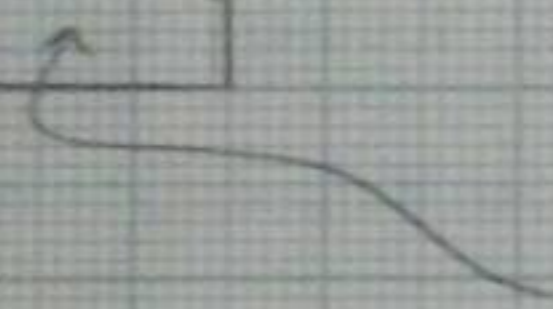


SM 73 / XXIII / 7B

PLAN LAYER (4) Bottom



SCALE 1:20



THE ENTIRE FLOOR OF 7B AT  
 THIS LAYER WAS NATURAL CLAY.  
 THE STONES WERE IN/ON THIS  
 CLAY.



57  
any obvious angle of rest. The bottom of the bottom was established when dark? soil, appearing as if it were burnt, was found.

No Finds.

LAYER (4) Black (Burned) soil with mortar frags. 60-70 cm - a layer of black soil mixed with mortar frags. + some stones was removed over the entire trench for a depth of approx. 10 cm. The layer was very loose in texture.

Beneath this layer was a number of stones set in thick yellow clay. These stones were planned (pg. 56) but in such a narrow trench it is difficult to see any pattern.

Appears as if there was some sort of burning to account for the burnt-looking soil + mortar mixture.

There were no finds.

LAYER (5) STONES REMOVED c. 70 cm.

- the stones found below layer (4) were removed. The floor of the entire trench was found to be yellow clay. A trial section dug in the N 30 cm. (+ 10 cm deep) of 7<sup>13</sup> proved this to be natural clay.

No finds around the stones.



TRENCH 7<sup>A</sup> BALK 7<sup>A</sup> 7 BALK 7<sup>A</sup> 17<sup>D</sup>TRENCH 17<sup>D</sup> TRENCH 7

As the above were all joined as the result of removing the 2 above mentioned balks, it was decided to combine notes for the above "super trench". The above trenches were now considered as a unit - the first layer given to this unit was (10). The unit is termed OSCAR TRENCH!

TRENCH 7<sup>A</sup> BALK 7<sup>A</sup> 17<sup>D</sup> LAYER 10 (35-40 cm)

- a layer of brown soil with many small stones was removed (5 cm thick) over the E portion (east of F 143).

Patches of clay still showed in irregular pattern along the S section immediately E of the line of mortar/s rubble forming the border of F 143. The soil itself was loose in texture.

The edge of F 143 remained very distinct but as yet no trace of walling or any form of barrier is apparent along the edge of the ~~unit~~ feature.

There is a disturbance in F 143 (see plan) but there is little sign of it in the soil east of F 143, except for a slightly darker patch of soil. This may be a plow furrow going E-W; the fill would be the same as to E of F 143 + no material would have been dragged out from the feature.

Finds included frags of bone + few pieces of pottery.

There was one small find, a Bronze ? mount. 159



BALK 7 7<sup>A</sup>

TRENCH 7

BALK 17<sup>D</sup> 7<sup>A</sup>

F 143 ONLY!

LAYER ⑪ ⑩ ⑪  
 LAYER ⑩ ⑪  
 MORTAR FRAGS, RUBBLE, BROWN SOIL MIXTURE 35-40 cm  
 - a layer c. 5 cm thick was removed over the whole of F 143. LAYER ⑩ here + LAYER ⑩ 7<sup>A</sup>, BALK 17<sup>D</sup> 7<sup>A</sup> correspond in so much as the floor of Oscar trench (from Balk 7 7<sup>A</sup> to E section 7<sup>A</sup>, excluding Trench 7) was kept level right across.

The layer consisted of mortar frags + stones. The mortar frags mixed with soil + of a loose texture was found to significant depth at the south end of Balk 7 7<sup>A</sup>. This is similar to the great depth of mortar frags + soil in the SE corner of Trench 7. (Layer ⑤ F 142)

An almost complete skull (fox) came from a point 92 cm from the S section, 350 cm from E section 7<sup>A</sup>.

Number 3  
 → There is a disturbance in the form of a shallow trench appearing in F 143. This "trench" cuts the E edge of F 143 at a point 1 m 30 cm from the N wall. It continues in a more or less straight line across F 143 to run into the W section of Trench 17<sup>D</sup>. The fill of this hollow is brown earth, the same as found in Oscar Trench, 7<sup>A</sup> Balk 17<sup>D</sup> 7<sup>A</sup> layer ⑩. There is still mortar on the bottom of the trench right across + it may be this is a? plow furrow.

Number 2  
 → As well, there is an area (see plan) butting the S section just inside the <sup>mortar</sup> plaster edge approx sq. in which little mortar is to be seen.

Number 1  
 → A third, possible disturbance, has been planned. This is a narrow band (35-40 cm) of brown soil with some mortar in it running N-S beginning in 17<sup>D</sup> just west of the E balk of the trench + continuing into F 143 for approx 3.5 metres. The fill appears to be brown



soil similar to that in the E-W hollow. The point where they crossed was unfortunately blurred by the heavy rainfall of the week.

Finds not numerous - mostly bone. Note that there is no brick being found here at all.

BALK 7<sup>A</sup> 17<sup>D</sup> 7<sup>A</sup> OSCAR TRENCH

(10) =

LAYER ⑪ BROWN SOIL (DIRTY BROWN) 40-48/65 cm

- This layer, 6-25 cm. thick, was removed over the entire area E of F [43] to the E side Trench 7<sup>A</sup>. The brown soil, with some small stones, was removed to a layer of yellow clay immediately below it.

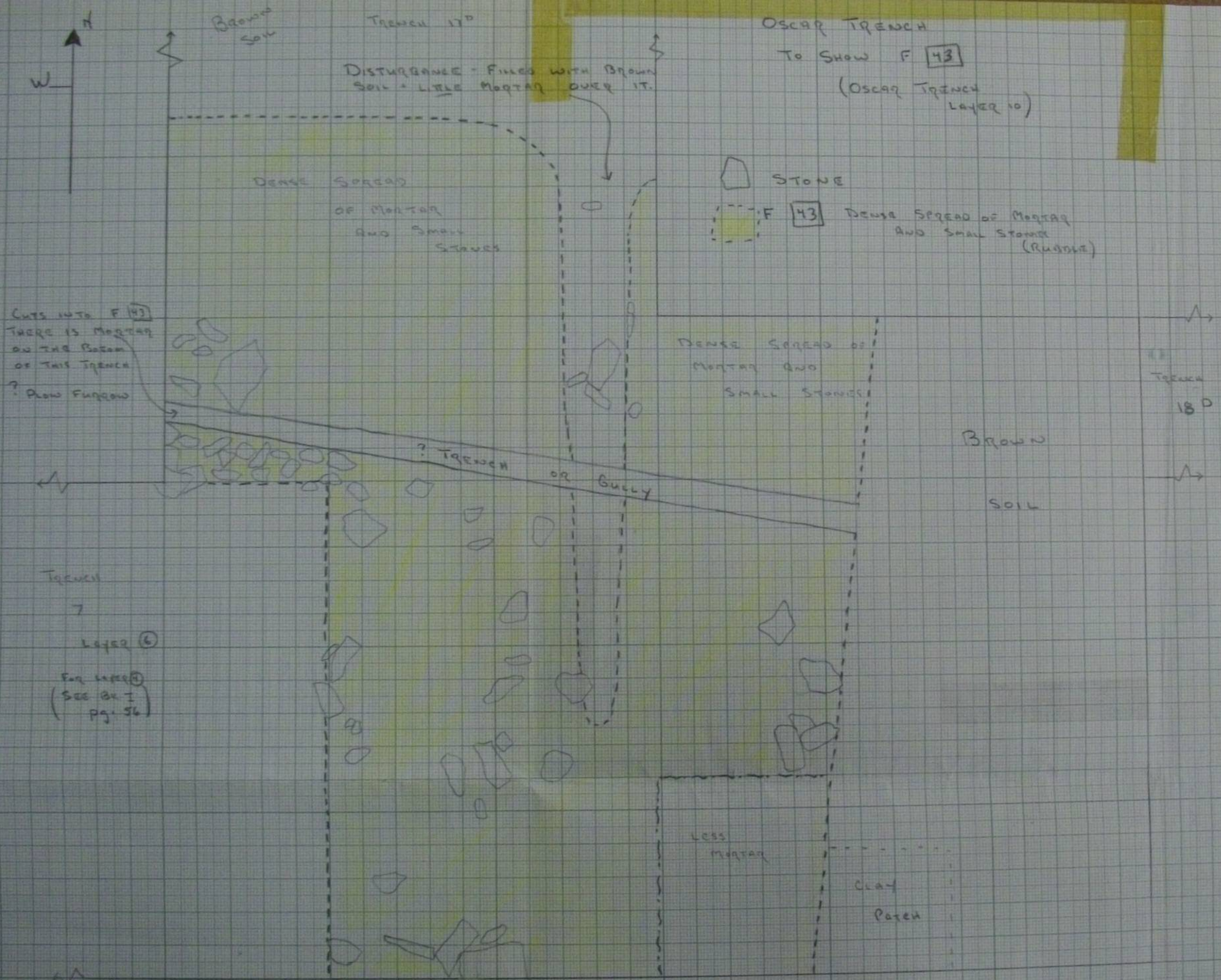
The soil here is a deeper brown than that of Trench 7 layers ⑦ + ⑧ which lay immediately above natural clay. Suggestion is that Layer ⑪ has been more disturbed.

The layer was very thick towards the S section. Depth below surface was 65 cm. here as opposed to 48 cm. against the N section.

This layer is the same as Trench 18<sup>D</sup> Layer ③. The cobbles in the latter do not run into 7<sup>A</sup> \*

\* See F [49] pg 75





NOTE: TRENCH 7 LAYER 6  
 IS BELOW LAYER 10 OSCAR  
 TRENCH  
 LAYER 10 BEST EQUALS  
 7 LAYER 4

SCALE 1:20

THIS IS, IN FACT, A  
 SKETCH PLAN TO  
 SHOW THE  
 GENERAL OUTLINE



# Oscar Trench

Trench 7<sup>A</sup>, Bank 7 7<sup>A</sup>, Tr. 17<sup>D</sup>, Bank 7<sup>A</sup> 17<sup>D</sup>

F [43]

Layer ⑪

10

- the original intent was to remove all mortar + small stone rubble from F [43] on Layer ⑪ to order to bring the entire area of "Oscar Trench" down to the level of Trench 7 Layer ⑥.

This was done over the W half of F [43] until the "disturbance" running N-S was reached (see plan)

The disturbance consists, at this layer, of a long tongue of clay, seemingly contaminated, extending N-S for approx 3 M., approx. 80-20cm. wide. It ends 100 cm from the S section, Tr. 7<sup>A</sup>, Bank 7 7<sup>A</sup>.

The "gully" noted earlier running E-W has cut into the clay slightly proving the clay "tongue" is earlier. This disturbance thus divides the rubble scatter termed F [43]

The rubble + mortar continues on the E of the clay "tongue" + the depth of the rubble is much greater to the E than to the W of the clay.

On the E there is a clear edge of the face (F [46]) where the mortar/rubble contrast to brown soil.

The other edge of the rubble/mortar backs into the "clay tongue" or its ( " " ) western side. This is now termed F [46].

The stones, while large, form no observed pattern except that they are confined within the edge of the mortar scatter.

Against the S section, between the 2 edges of F [46], the deposit of mortar + rubble is much deeper than anywhere else in F [46]. (See plan pg 141). The mortar lumps are mixed with a

See Report IA 1973



dark black soil; apparently this mixture is the result of some sort of burning.

The edge of F 143 in 17<sup>D</sup> was not so "knife-edged" as in 7<sup>A</sup>, though there were more small stones in a cluster in Balk 7<sup>A</sup> 17<sup>D</sup> - the SW corner of 17<sup>D</sup>. The "tongue" of clay merges into the clay surface of Tr. 17<sup>D</sup> layer ⑤.

Finds from layer ⑪ were not numerous - included some pottery - bone.

F 143

LAYER ⑫

- the stones were removed over all of F 143, that is, the area of mortar + rubble confined to the W of the clay tongue. Layer ⑫ does not include F 146.

No pattern found to the stones.



## LAYER ⑬

July 22

- Layer ⑬ consists of the contents of F 46. Large stones + small rubble were removed by hand. Any large stones lying horizontal + embedded in the mortar were left in place in order to see if there were any courses of laid flagstone. Satisfied there were none, all stones + mortar were taken out as one layer. HOWEVER - the heavy rain of July 21<sup>st</sup> 73 caused a rise in the water table. It was found necessary to dig to the water table as a natural level.

To the top of the water table (c. 50 cm below surface) the layer consisted of brown soil mixed with mortar, small stones thru out the entire area of F 46 + a number of large stones set at no particular angle or in any obvious pattern.

Lumps of apparently natural clay were found. These lumps overlap + were overlain themselves by rubble. ? They may be up cast from an original trench?

The edges of the feature are quite definite - follow those planned at Layer 1.

It is of interest that one brick was found, against the E side of F 46 approx 1.5 m. - from the N section. This is the ~~at~~ only brick found in the feature. Note - a second piece of brick was found near the S section.

Finds included pieces of bone only.

July 23/73

The southern portion of F 43 was cleaned up after the floods!!

The entire Feature was travelled over. Layer ⑬ consists of the above (July 22) as well as all stone mortar + brown soil down to a layer of yellow clay. This clay may be contaminated.

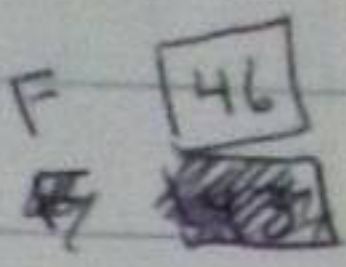
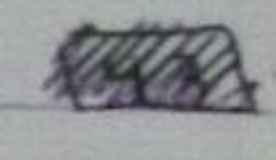
The layer was approx cm in thickness.

Finds over the S portion of the trench included more bone.

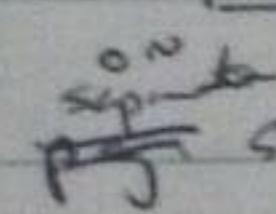


In summary, Layer ⑬ was composed of brown soil, stone rubble + mortar frags removed over the entire trench feature, except for the two features F 49 + F 50 noted below.

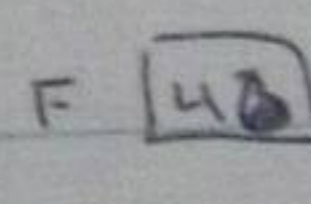
### F 49

This feature was observed at the bottom of  Layer 13. It is a linear feature running approx. NW-SE across the southern portion + central area of  + F 46

The soil within this is black/dark brown + there are a great number of small + large stones scattered over its length. At the N end there is a tumble of stone, some being still imbedded in an upright position + one can see a ? cover slab suggesting that F 49 is a drain.

At its southern end, F 49 would appear to cut into or just butt against F 50 (see below). The yellow clay surrounding F 50 has been removed by the cutting of F 49 along the N face of F 50 (see plan  sheet).

### F 50

- This feature was observed at the bottom of  Layer ⑬. It is a more or less rectangular feature extending out from the S section for approx. 160 cm. The feature is surrounded by yellow <sup>clay</sup>, except where it goes into the section + along its N edge where F 49 has cut into it. It would seem F 49 has just touched F 50 after cutting away the clay surrounding F 50 on N edge.



The feature has a black soil fill with large stones & there are blocks of mortar over the top.

Both F [49] + F [50] <sup>were</sup> ~~was~~ planned. (p. 78) ~~(Pg 71)~~  
(Pg 71)

OSCAR TRENCH 7<sup>A</sup> BALK 7<sup>A</sup> 17<sup>D</sup> F [49]

LAYER (17) (14)

- this layer consists of the contents of F [49]

F [49] was not confined within the borders of F [40]. F 49 is not a collapsed drain! F [49] consists of a deep layer of rubble spread over the east portion of 7<sup>A</sup>, Balk 7<sup>A</sup> 17<sup>D</sup> Oscar Trench. Top 58 cm. below surface.

The bottom is not exactly known because of the high water table. Approx 20 cm. H. cl. The top layer of the rubble consists of large stone, some dressed (removed as small finds), & others quite flat. latter may have been used as flooring stone. Below this the rubble is smaller, tightly packed. Below this are pebbles that seemingly just overlie clay.

There is no pattern to the rubble but it is most likely this is connected with the so-called cobbles in Trench 88<sup>A</sup>, Trench 18<sup>D</sup> & possibly, with the clay pit unexcavated by Trench 17<sup>A</sup> 18<sup>A</sup>, 17<sup>E</sup>, 17<sup>C</sup>, 18<sup>B</sup>. The rubble layer in Oscar Trench differs from the other rubble in the "CLAY PIT" in that pottery, bone, shell has come up in large amts. from the rubble in Oscar Trench.

In 7<sup>A</sup>, Balk 7<sup>A</sup> 17<sup>D</sup>, the rubble was not entirely removed. Instead, because of lack of time, a section was dug along the S section to find the depth of rubble; a trench was dug E-W to prove the rubble ran thru. the



entire trench + most likely connects with the cobbles in 18<sup>0</sup>, 88<sup>A</sup>; a section was dug along the N section Bulk 7<sup>A</sup> 17<sup>0</sup>. Rubble continues under the unexcavated bulk.

18 → Against the S section the rubble is overlain by clay, a thick yellow clay, that appears to be natural except for the rubble under it! This clay varies between 10-30 cm in thickness, being thickest just E of F 50. There were no finds in the clay, all finds came from the rubble. A complete bracelet came from the rubble.

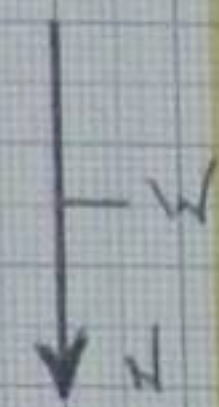
There are 2 areas where the soil around the larger stones in the uppermost layer of rubble is very sandy: against the N section for approx 1 metre + running S for another metre; there was a small patch of sandy soil near the junction of 7<sup>A</sup> + 18<sup>0</sup>, by the E section of 7<sup>A</sup>. May be decayed sandstone.

(See pg. 78 for plan)





OSCAR TRENCH  
TO SHOW  
FEATURES **49** + **50**  
+ RUBBLE UNDER **F49** **F50**



Scale 1:20

SURFACE

NATURAL  
CLAY

Area within  
which "OUG" dug  
out to rubble - to  
top of its high (!)  
water table

--- ORIGINAL EDGE  
OF **F49**

**F50**

**F49**

**F49** - Brown Soil with number  
of stones. At first  
thought to be collapsed  
drain.

**F50** - Black Soil, some mortar  
and stones very shallow  
7-10 cm deep.

NOTES: ON REMOVING **F49** + **F50** IT WAS FOUND  
THE "CLAY" OVERLAY A VAST RUBBLE PIT OF  
UNKNOWN DEPTH. SECTIONS WERE CUT IN THE  
LITTLE TIME LEFT AND ARE DRAWN IN ABOVE.  
THE WESTERN EDGE OF **F49** WAS NATURAL  
CLAY + FORMED ONE EDGE OF THE CLAY  
PIT.



OSCAR TRENCH

7A

F [50]

LAYER (15)

F [50]

- this layer consists of F [50]. The feature was removed in its entirety, it was not sectioned. F [50] was apparently a shallow hollow (7-10 cm deep) filled with medium sized stone, some showing signs of burning, + very black soil.

The feature contained no finds at all!

In outline it followed that planned (78 ps) + was removed to a layer of yellow clay. It was thought the clay to the E of F [50] was natural - this was not so + the clay, not containing anything, overlay a layer of rubble. This rubble is under the clay over the entire E portion of Oscar trench, East of the west edge of F [46].

The bottom of the rubble was not reached owing to a high water table. The rubble apparently bottomed out c. 10cm below the water table + rested on clay (Found by "clawing" thru the water!).

The rubble contained pottery, glass, bone, brick,

see p. 82

F [50]

130 cm \* S section \* 150 cm N

~~section~~ Top 60 cm. below surface



91

Oscar Trench 7, 7<sup>A</sup>, Balk 7 7<sup>A</sup>, Balk 7<sup>A</sup> 17<sup>D</sup>  
17<sup>D</sup>

LAYER (16) Brown soil with top spread of mortar

- a layer of brown soil with small stones + having some mortar on top, was removed over the area between F [37] + F [43]. Layer 16 is immediately below layers (4) + (5), Tr. 17<sup>D</sup>. The layer was approx. cm. thick, + was removed to a layer of yellow clay assumed to be natural. This level is the same as at the bottom of F [50] + the bottom of the section against the E wall of F [37].

Finds include bone, shell + a ? coin/jeton in very poor condition. The latter was small find.

No features. Baren surface that is at same level of 17<sup>B</sup>.

The layer was 3-5 cm. thick + clay is approx 60 cm. below surface

(17) Brown/black soil, no mortar, over lies (18)  
(See S. Section)

(18) Redeposited clay (see p 77)

(19) "Tongue" of clay in 17<sup>D</sup>, 7/7<sup>A</sup>, 7<sup>A</sup> - merges with layer (6) in 17<sup>D</sup> - natural?



25.9.73. Oscar Trench - pit bottomed along S section

See annotated drawing

Findings include bars, pottery,

& carved masonry - ca. v. black deposit present. - a

Parts of roofing ~~plate~~ <sup>flags</sup> - kept

lot of air spaces.

2 lots of ~~four~~ flags - decorated.

? floor flag (1) Finished edge 6" long X 1" thick

but broken. Largest measurement 12".

? Roof flag (2) Finish at 8" X  $\frac{1}{2}$ " - but broken

Max measurements  $13\frac{1}{2}$ " X 9".

Depth < size of stone rubble in at E ends with line of brick <

small brick flags < stone over top & tailing off to W →

? tipped from E.