

PLAN of EXCAVATION.

1976

Area known as INNER COURT.

Aim (a) To continue along w. front from where A. Battenworth left of in 1970.

- Area excavation - SITE XIII

(b) To investigate southern half of ~~excavation~~ earth possibility of crosswing & continuation of E. wing.

Trial trenches - XIV

& XV.

GRID - based on 5m. squares - see main site plan.

FINDS -

(1) Small finds - see Finds Assistant.

Number individ. Δ & plotted 3 dimensionally.

(2) Quantities - into trays. -

ONE for EACH LAYER & a NEW ONE each DAY.

2 LABELS per tray:

eg. SM 76 / XIV / (5) mortar & rubble deposit.

Significant deposits & scatters read on ~~site~~ layer plan in site notebook.

LAYERS - number conventionally eg (3).

NB Topsoil (1).

Detailed description & plans in site notebook.

FEATURES - number conventionally. eg [4] -

Can see clearly in each Trench/Site

HEIGHT DATUM - SE corner of Tower House - bottom of lower string course.

AUGUST '76

Post holes dug by PWS for fence across front entrance.

From stand have N:

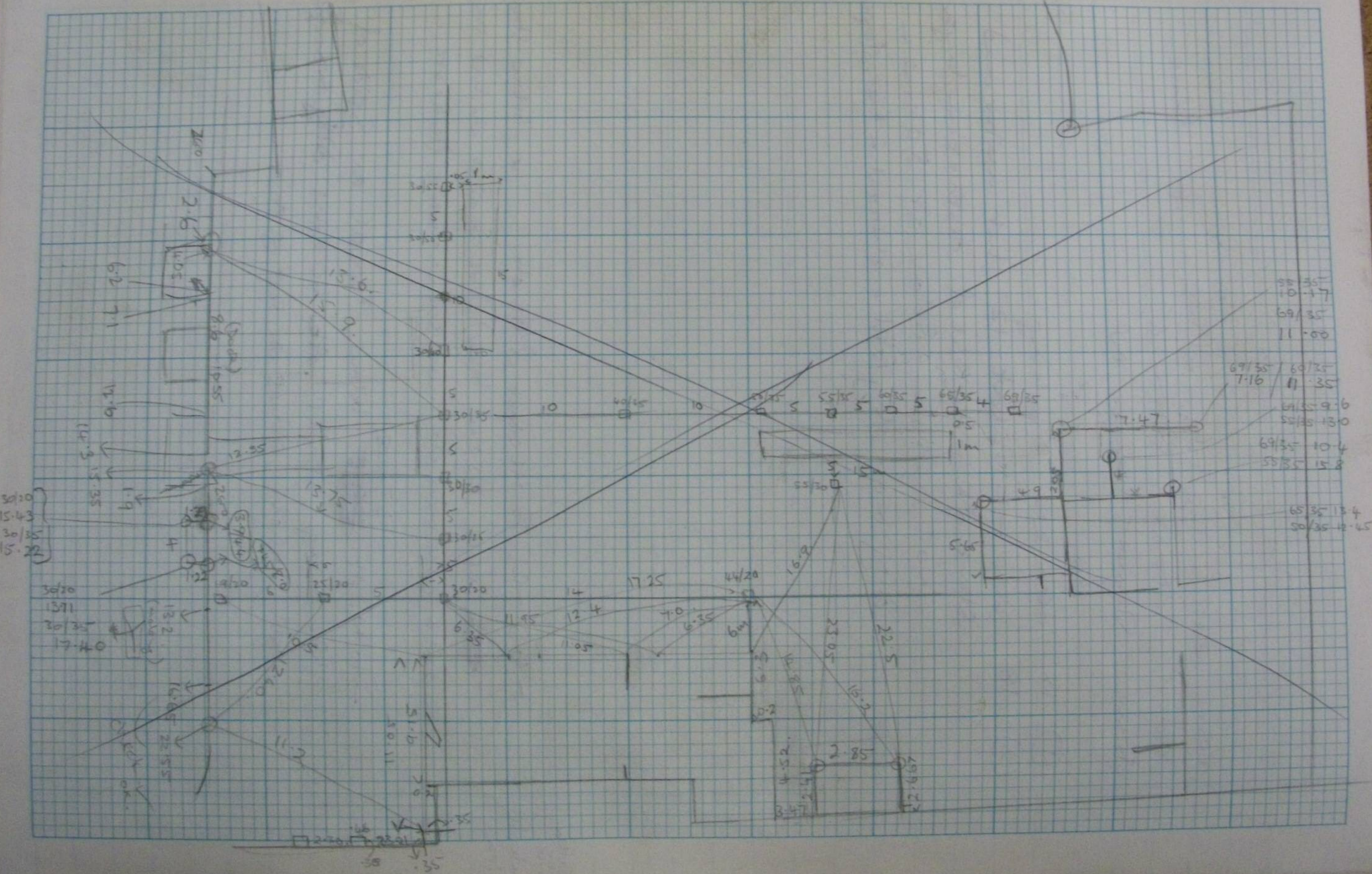
- ① 18" deep into banking
- ② 18" deep - at about 12" hit mortar and stonework - typical of destruction layer - NOT in situ. Below at 50 cms - dirty brown clay/soil - charcoal & brick frags. etc.

Either side of entrance road.

- to S. - cut into NE corner of Trench & below stone
- ~~at~~ surface (15 cms below) where excavat. wk. had stopped -
was a dark brown clay mixed soil w. charcoal flecks etc.

- to N. At ~~15~~ ^{43 cms.} below topsoil on S side of hole - large stones. At 60 cms dirty brown clay/soil which stones are resting on.

SEE TAIN PLAN



Am.

- (1) To complete Site XIII & start an area to S if time permits. Top metre removed by J.C.B.
- (2) To area excavate betw. XIV & W. front - joining up w. Allie's Trench X, which is still open.

8.8.77

local inhabitant's mother said to have gone down tunnel from N. side of Naught Lane (he thought ^{entrance was located} to W. of main front) - & tunnel led under Naught Lane down hill (S) & up again to large 'pond'.

NB

1975 2 brick vaulted cellars of Norfolk Arms - Examined.

Easterly one cleared - barrel rolling steps on N. side & an ~~east~~ east arched opening below bar. Sketched into large plan & slide taken.

1. Thurs.
2

	Mon	Tue	Wed	Thu	Fri	Sat	Sun	Mon	Tue	Wed	Thu	Fri	Sat	Sun
	✓	✓	✓	✓	✓	✓	✓	1/2	1/2	✓	✓	✓	✓	✓
	✓	✓	✓	✓	✓	X	✓	1/2	✓	✓	✓	✓	✓	✓
	✓	✓	✓	✓	✓	✓	✓	✓	✓	✓	X	✓	✓	✓
	✓	✓	✓	✓	X	X	✓	✓	✓	✓	✓	✓	✓	✓
	✓	✓	✓	1/2	✓	✓	✓	1/2	*✓	*✓	*✓	1/2	X	1/2
	✓	✓	✓	✓	✓	X	X	✓	✓	✓	✓	1/2	X	X
	✓	✓	✓	✓	X	X	X	✓	✓	✓	✓	✓	X	X
	X	X	X	X	X	✓	✓	X	X	X	X	X	X	X
	✓	✓	✓	✓	✓	✓	✓	✓	✓	✓	✓	✓	✓	✓
	EMERGENCY BOX		X	X	X	X	X	X	X	X	X	X	X	X
	✓	✓	✓	✓	✓	✓	X	✓	✓	X	✓	1/2	X	X
	X	X	X	X	X	X	X	X	X	X	X	X	X	X
	✓	✓	✓	✓	✓	✓	✓	✓	✓	X	X	X	X	X
	✓	✓	✓	✓	✓	✓	X	✓	✓	✓	✓	✓	X	✓
	✓	✓	✓	✓	✓	✓	✓	1/2	✓	✓	X	✓	✓	✓
	✓	✓	✓	✓	✓	✓	✓	✓	✓	✓	✓	✓	✓	✓
	X	X	X	X	X	X	X	X	X	X	X	X	X	X
	✓	✓	✓	✓	X	✓	X	✓	X	✓	✓	✓	✓	✓
	✓	✓	✓	✓	✓	✓	✓	✓	✓	✓	✓	✓	✓	X
	✓	✓	✓	✓	✓	✓	✓	X	X	X	X	X	X	X
	✓	✓	✓	✓	✓	✓	✓	✓	✓	✓	✓	✓	✓	✓
	X	X	X	X	X	X	X	1/2	✓	✓	✓	✓	X	✓
	X	X	X	X	X	X	X	1/2	✓	✓	✓	✓	X	✓
	X	X	X	X	X	X	X	1/2	✓	X	X	X	X	X
	✓	✓	✓	✓	✓	✓	✓	X	✓	✓	✓	✓	X	✓
	✓	✓	✓	✓	✓	✓	✓	X	✓	✓	✓	✓	X	✓
	X	X	X	X	X	X	X	✓	✓	✓	✓	✓	X	X
	✓	✓	✓	✓	✓	X	X	X	X	X	X	X	X	X
	X	X	X	X	X	X	X	1/2	✓	✓	✓	✓	✓	✓

M	T	W	Th	Fri	Sat	Sun	M	T	W	Th	Fri	Sat	Sun
---	---	---	----	-----	-----	-----	---	---	---	----	-----	-----	-----

✓	✓	✓	✓	✓	✗	✓	✓	✓	✓	✓	✓	✓	✓
---	---	---	---	---	---	---	---	---	---	---	---	---	---

✓	✗	✗	✗	✗	✗	✗	✗	✗	✗	✗	✗	✗	✗
---	---	---	---	---	---	---	---	---	---	---	---	---	---

✓	✓	✓	✓	✓	✓	✗	✓	✓	✓	✓	✓	✓	✗
---	---	---	---	---	---	---	---	---	---	---	---	---	---

✗	✗	✗	✗	✗	✗	✗	✓	✓	✓	✓	✓	✓	✓
---	---	---	---	---	---	---	---	---	---	---	---	---	---

✓	✓	✓	✓	✓	✓	✓	✓	✓	✓	✓	✓	✓	✓
---	---	---	---	---	---	---	---	---	---	---	---	---	---

✓	✓	✓	✓	✓	✗	✗	✗	✗	✗	✗	✗	✗	✗
---	---	---	---	---	---	---	---	---	---	---	---	---	---

17 14

S

M T W Th Fr Sat

✓ ✓ ✓ ✓ ✓ ✓

✓ ~~2~~ ✓ ✓ ✓ ✓

✓ ✓ ✓ ✓ ✓ ✓

$\frac{1}{2}$ ✓ ✓ ✓ ✓ ✓ ✓

✗ ✗ ✗ ✗ ✗ ✗

✗ ✗ ✗ ✗ ✗ ✗

✓ ✓ ✓ ✓ ~~5~~ ✓

✗ ✗ ✗ ✗ ✗ ✗

✓ ✓ ✓ ✓ ✓ ✓

✓ ✓ ✓ ✓ ✓ ✓

✓ ✓ ✓ ✗ ✓ ✓

✓ ✓ ✓ ✗ ✓ ✓

✓ ✓ ✓ ✓ ✓ $\frac{1}{2}$

✓ ✓ ✓ ✓ ✗ ✓

✗ ✗ ✗ ✗ ✗ ✗

✓ ✓ ✓ ✓ ✓ ✗

✓ ✓ ✓ ✓ ✓ ✗

✗ ✗ ✗ ✗ ✗ ✗

✓ ✓ ✓ ✓ ✓ ✓

✓ ✓ ✓ ✓ ✓ ✓

✓ ✓ ✓ ✓ ✓ ✗

✓ ✓ ✓ ✗ ✓ ✓

✓ ✓ ✓ ✓ ✓ ✗

✓ ✓ ✓ ✓ ✓ ✓

✗ ✗ ✗ ✗ ✗ ✗

✗ ✗ ✗ ✗ ✗ ✗

✓ ✓ ✓ ✓ ✓ ✗

✓ ✓ ✓ ✓ ✓ ✗

✓ ✓ ~~2~~ ✓ ✓ ✓ ✗

KEY to disturbances by Estates

- See large scale
plan 1" - 8"

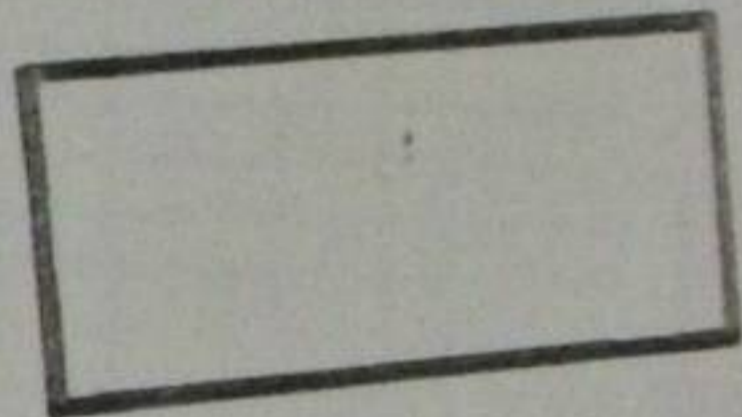
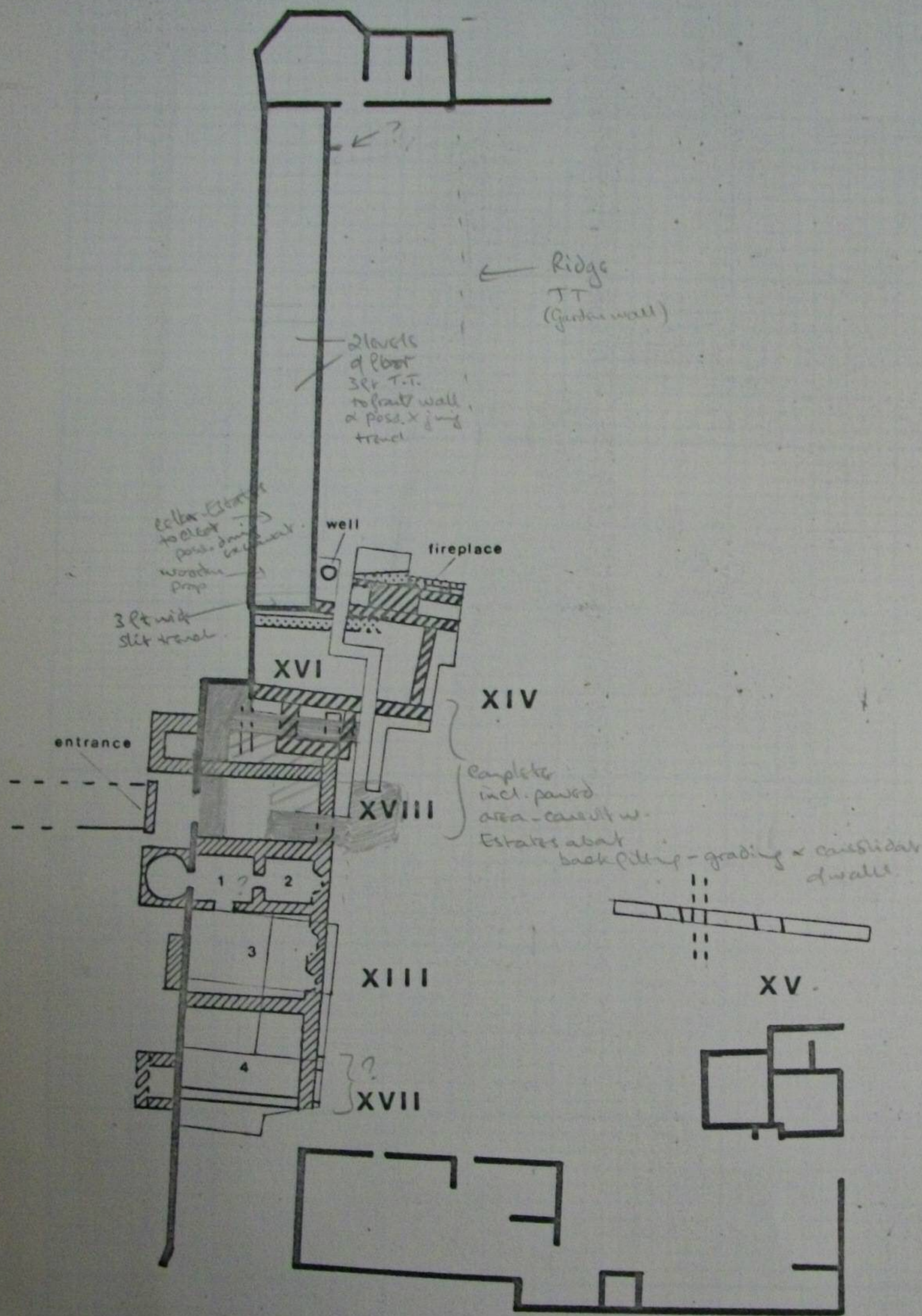
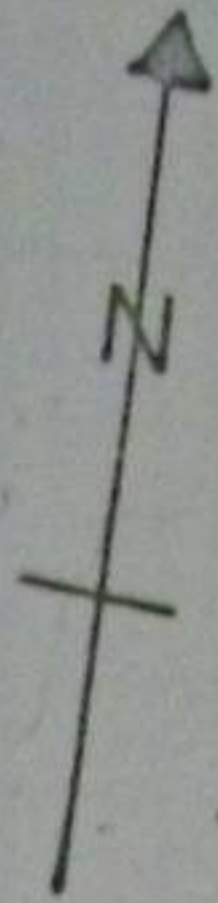
- (A) Laying on floor of long gallery at higher level & on edge of rise
labourer removed kiln saggers & shards which had been used
to build up the paving. Autumn, 1973.
Finds labelled S.1.73.L.G.
- (B) Stone vaulted arch of cellar not banded into N. facing wall -
dug out by labourer by mistake in 1973.
- (C) Foundations of wall collapsed - dug out & concrete filled,
May 1974. Top 18" v. loose & incl (18)-(19) pottery. Photographed
18" to 2' down flat stones & ? recess w. ? door jamb
on left. Poss. alterations in (18)-(19) cellar & part of earlier structure.
- (D) 2 brick vaulted cellars of Norfolk Arms - most easterly
are cleared & examined in 1975. N side - stepped ramp
for rolling down barrels; E side - arched opening below bar;
S side flight of steps down.
Sketched onto large 1"-8" plan & slides taken. Brass tap - Sept, 1978
- (E) Said by Ray Gargate to be (19) cellar with steps
down at W. end. Backfilled 1972-3.
- (F) Areas disturbed in 1973.

1978

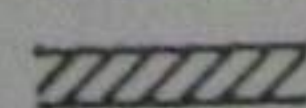
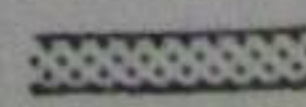
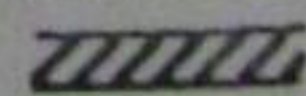
Conventions : Red - brick
Green - mortar
Purple / Blue - coal.

Scale : 1:20 for plans & sections.
(in notebooks -

Sheffield Manor 1976 & 77

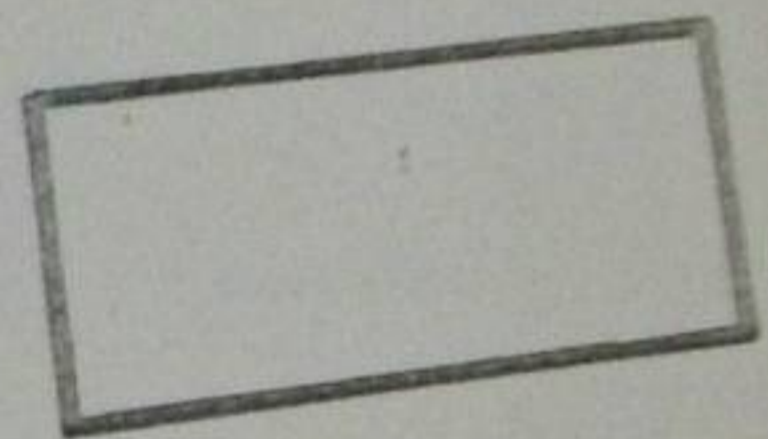
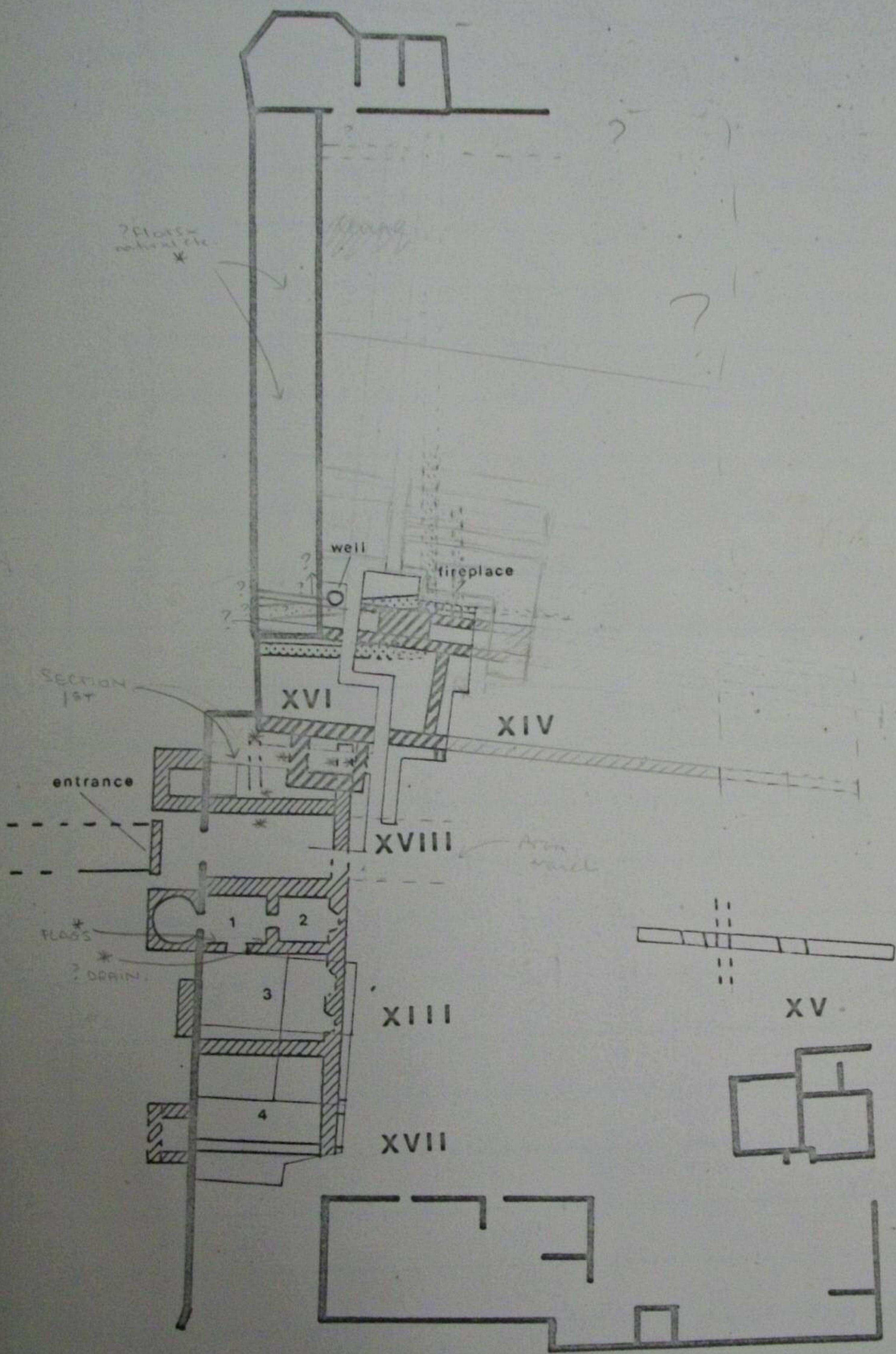
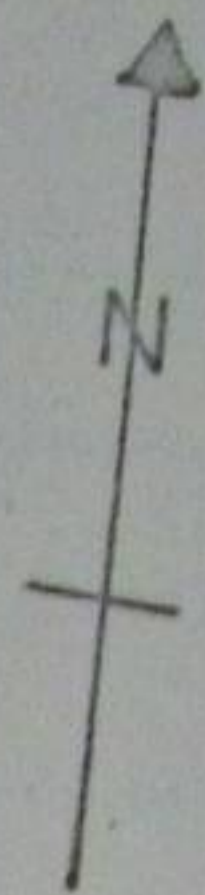


KEY

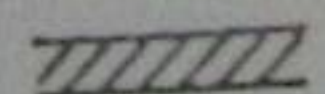
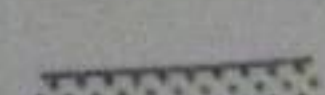
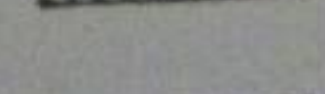
-  Entrance block
-  Clay grouted footings
-  Mortared footings

1:500

Sheffield Manor 1976 & 77



KEY

-  Entrance block
-  Clay grouted footings
-  Mortared footings

1:500

WBS Weaver's comments.

Winder's plan & Estates hierarchical plan.

Scale ruler

Tie up sections & pages in John's XVIII trench & XVI

T	W	T	F	S	S
✓	✓	✓	✓	✓ ²	✓
✓	✓	✓	✓ ³	✓	✓
✓	✓	✓	✓	X	X
✓	✓	✓	✓	X ²	✓ ²

31.7.79 Site observations;

W. wing - S. $\frac{1}{2}$. Inner outer wall - recessed large rectangular blocks of masonry - NOT present in outer outer wall of wing
Rooms off S tower - N. wall as line of lag gallery \rightarrow a break in the building line.
Presumably reflect earlier building phases - less utilitarian evidence
might be found in inner court?!

Guided tour Sat 4 Aug. - 2.0. c. 30 people. $1\frac{1}{2}$ hrs - windy

π^2

✓
✓
✓
✓
X
✓
X

π^3

✓
✓
✓
✓
X
✓
✓

π^4

✓
✓
✓
X
X
X

π^5

✓
✓
✓
X

π^6

X
X
X
X

π^7

✓
✓
✓
X

π^8

✓
✓
✓
✓

	13	14	15	16	17	18	19	20	21	22	23	24	25	
	M	T	W	T	F	S	S	M	T	W	T	F	S	
	✓	✓	✓	X	✓	✓	✓	✓	✓	✓	✓	✓		X
	✓	✓	✓	X	✓	✓	✓	✓	✓	✓	✓	✓		X
	✓	✓	✓	X	✓	✓	✓	✓	✓	X	✓	✓		X
	1/2	✓	✓	X	✓	✓	✓	✓	✓	✓	✓	✓		X
	✓	1/2	✓	X	✓	✓	✓	1/2	1/2	✓	✓	✓		X
	✓	✓	✓	X	✓	✓	✓	✓	✓	✓	✓	✓		X
	✓	✓	✓	X	✓	✓	✓	✓	✓	✓	✓	✓		X
	✓	✓	✓	X	✓	✓	X	✓	✓	✓	✓	✓		X
	✓	✓	✓	X	✓	✓	✓	✓	✓	✓	✓	✓		X
	✓	✓	✓	X	✓	X	X	✓	1/2	✓	✓	10:45	1/2	X
	✓	✓	✓	X	✓	X	X	✓	✓	✓	✓	✓	X	X
	✓	✓	✓	X	✓	✓	✓	✓	✓	✓	✓	✓	✓	X
	✓	1/2	✓	X	✓	✓	✓	✓	1/2	✓	✓	✓	X	X
				X			✓	✓	✓	✓	✓	✓		X
3:0	✓	✓	✓	X	3:0	2:0 later	3:0	3:0	3:0	10:15	✓	3:0	3:0	X
	✓	✓	✓	X	✓	✓	X	✓	✓	✓	✓	✓	✓	X
	✓	✓	✓	X										X
	✓	✓	✓	X	1/2	X	1/2	✓	1/2	10:45	1/2	1/2		X
	✓	✓	✓	X	✓	✓	✓	✓	✓	1/2	✓	1/2		X
	X	X	X	X	X	✓	✓	✓	✓	✓	9:30	✓	✓	X
	✓	✓	✓	X	✓	X	X							X
	✓	✓	✓	X	✓	✓	✓	✓	✓	✓	✓	✓	X	X
	✓	✓	✓	X	✓	✓	✓	✓	✓	✓	✓	✓	X	X
	✓	✓	X	X	1/2	✓	1/2	11:50 12am	1/2	10:30	10:30	1/2	✓	X
				X							✓			X
X	X	X	X	X	X	X	X	X	✓	X	X	X		X
✓	X	✓	X	X	X	X	X	✓	✓	1/2	✓	✓	X	X
✓	✓	✓	X	✓	X	X	✓	✓	✓	1/2	✓	✓	X	X
1/2	✓	1/2	X	✓	✓	✓	X	✓	✓	X	✓	✓	X	X
✓	✓	✓	X	✓	✓	✓	✓	✓	✓	X	✓	X	✓	X
✓	✓	✓	X	✓	✓	✓	✓	✓	X	✓	X	✓	✓	X

21	22	23	24	25	26	27	28	29	30	31	1	2	3
M	T	W	T	F	S	S	M	T	W	T	F	S	S
✓	✓		✓	✓	✓	✓	✓	✓		✓	✓	✓	✓
✓	✓		✓	✓	✓	✓	✓	✓		✓	✓	✓	✓
✓	✓		✓	✓	✓	✓	✓	✓		✓	✓	✓	✓
✓	✓		✓	✓	✓	✓	✓	✓		✓	✓	✓	✓
✓	✓		✓	✓	✓	✓	✓	✓		✓	✓	✓	✓
✓	✓		✓	✓	✓	✓	✓	✓		✓	✓	✓	✓
✓	✓		✓	1/2	1/2	✓	✓	3/4		x	✓	✓	✓
✓	✓		✓	✓	✓	✓	*	x		x	x	x	✓
✓	✓		✓	✓	x	x	x	x		x	x	x	x
✓	✓		✓	✓	x	x							
✓	✓		✓	✓	x	x							
x	x		x	x	x	x	x	x		x	x	x	x
✓	✓		✓	✓	✓	✓	✓	✓		✓	✓	✓	✓
✓	✓		✓	✓	✓	✓							
✓	✓		✓	✓	✓	✓	✓	✓		✓	✓	✓	✓
✓	✓		✓	x	x	✓	✓	✓		✓	✓	✓	✓
✓	✓		✓	✓	✓	x	✓	✓		x	✓	x	x
✓	✓		✓	✓	✓	✓	✓	✓		✓	✓	x	✓
✓	1/2		✓	✓	✓	✓	✓	✓		✓	✓	✓	✓
✓	✓		✓	✓	✓	x							
✓	✓		✓	✓	✓	x							
✓	✓		✓	✓	✓	x	✓	✓		✓	✓	x	✓
✓	✓		✓	✓	✓	✓	✓	✓		✓	✓	✓	✓
✓	✓		✓	✓	✓	x							
✓	✓		✓	✓	✓	x							
✓	✓		✓	✓	✓	✓	✓	✓					
1/2	1/2		1/2	1/2	x	x	x	x		x	x	x	x
✓	✓		✓	✓	✓	✓	✓	✓		✓	✓	✓	✓
✓	✓		✓	✓	✓	✓	✓	✓		✓	✓	2	✓
✓	✓		✓	✓	x	x	✓	x		✓	✓	✓	✓
✓	✓		✓	✓	✓	x							

27 S	28 M	29 T	30 W	31 T	1 F	2 S	3 S
✓	—	—	}	—	—	—	—
—	✓	✓		✓	✓	✓	X
—	✓	✓		X	—	—	—
—	✓	✓		✓	✓	X	X
—	X	✓		X	X	X	X
—	✓	✓		✓	✓	✓	✓
—	✓	✓		✓	✓	✓	X
—	✓	✓		✓	✓	✓	X
—	✓	X		X	X	X	X
—	—	—		—	—	✓	X

	18	19	20	21	22	23
	F	T	W	T	F	S
	✓	✓	}	✓	✓	✓
	✓	✓		✓	✓	✓
	✓	✓		✓	✓	✓
	✓	✓		✓	✓	✓
	✓ ₊	✗ ₊		✓ _✗	✓ ₊	✓ ₊
	✓	✓		✓	✓	✓
	✗	✗		✓	✓	✓
	✗	✗		✗	✗	✗
	✓	✓		✓	✓	✓
	✓	✓		✓	✓	✓
	✓	✓		✓	✓	✓
	✗	✗		✗	✗	✗
	✓	✓		✓	✓	✓
<i>January</i>	✓	✓		✓	✓	✓
	✓	✓		✗	✓	✓
	✗	✗	✗	✗	✗	
	✗	✓	✓	✓	✓ ₂	
	✓	✓	✓	✓	✓	
	✓	✓	✓	✓	✓	
	✗	✓	✓	✗ ₂	✗	
	✗	✓	✓	✗	✗	
	✗	✗	✓	✓	✗	
	✓	✓	✓	✓	✓	
	✓	✓	✓	✓	✓	
	✓	✓	✓	✓	✓	
	✓	✓	✓	✗	✗	
	✓	✓	✓	✗	✗	
	✓	✓	✓	✗	✗	
	✗	✓	✓	✗	✗	

NO.

2'-1"

2'-8"

140.

6'-6"

10'-2"

day clays.
19'-6"

Clay
+ small
stones

Stones
+ sandy clay
+ clay stain

stones

Clay
stone free
grayish
mixed

(52"
width)

JUGS or JARS. : various large diam. w. flared rims & raised line decoration. No complete profile

CRUCIBLES : 3 concave, various sizes
1 complete. & 2 frags. 1 inside other, smaller
w. lump of slag inside.

SAGGERS: Numerous & various sizes.

MANOR WARE analyzed carried out by Stephen Minette
April '73. fd: -

XXA/11. Bases:

- 3 plates (unglazed)
- 12 chamber pots
- 3 crucibles
- 48 tankards
- 7 storage jars (?)

(18) POTTERY.

PROVISIONAL

TYPES

BAGGED (mainly quadrant B)
S17.71/XX unstratified
material removed
March 1971 from deposit
approx betw. D & E flagst.
wall)

TANKARDS

Type A

- I. Plain bodies; small; yellow brown glaze
- II. ^{Bands of} Raised lines on bodies grouped round a raised CONVEX LINE. Brown glaze. Medium sized.
- III. Raised // ~~lines~~ lines in bands of 6. Hard toffee brown glaze inside & out. wide range of sizes & v. common.
- IV. white clay & rough glaze. Features:
- Poor quality; interior wheel lines; body sherds probab. of same ware w. multiple // lines (6+);
Concave moulding round base.
Medium sized.
- V. indeterminate: Glaze gr. variation & not all-over -
+ speckled in colour. Uncertain if raised line decoration on body.

TYPE B.

All-over convex bands on body.
Medium size. Glazes mixed colours & finishes.

HANDLED BOWLS.

Bellied; bands of raised lines in neck vary in number
handles common find

BOWL. S shaped profile. No ridges. (1 only)

HANDLED CUPS.

Tulip shaped. Similar to bowls but small diam.
Ridges in neck have convex band at top & bottom.

CUPS. Straight-sided w.verted rim.

CHAMBER POTS.

Bellied w. round verted rim ->). Thick brown glaze.
1 eq. flat-topped.

STORAGE JAR.

6" base & straight sided (1 only).

PLATE

1 rim piece - flat & 7/8" wide. Poss. base & body piece.