

1976

Phred Ferguson.

SHEFFIELD MANOR

SITE RECORDS

VOL. 13

1976(1)

---

AREAS: XIII B XIII C



# PLAN of EXCAVATION.

1976

AIM (a) To continue along w. front of main house from where A. Butterworth left of in 1970.

Area excavation - SITE ~~■~~ XIII

(b) To investigate southern half of inner courtyard

Trial (i) Possibility of cross wing - SITE XIV

Trenches (ii) " " continuation of E. wing - SITE XV.

GRID based on 5m. squares - see main site plan.

HEIGHT DATUM S.E. corner of Tower House - bottom of lower string course.

FINDS (1) Small finds - numbered individually eg  $\triangle 10$  & plotted 3 dimensionally. See Finds Assistant.

(2) Quantities - into trays; one for each layer and a new one each day.

2 LABELS per tray:

eg. S1176 / XIV / (5) mortar & rubble deposit.

Record significant deposits & scatters on layer plan in site notebook.

LAYERS Number conventionally eg (3). NO Topsoil (1).

Detailed description and plans in site notebook.

FEATURES Number conventionally eg [4]. - consecutive numbers for each Site.



SM 76 XIII B

Scale 1cm = 50cm

2  
↑

29/30

Eroded edge  
of trench

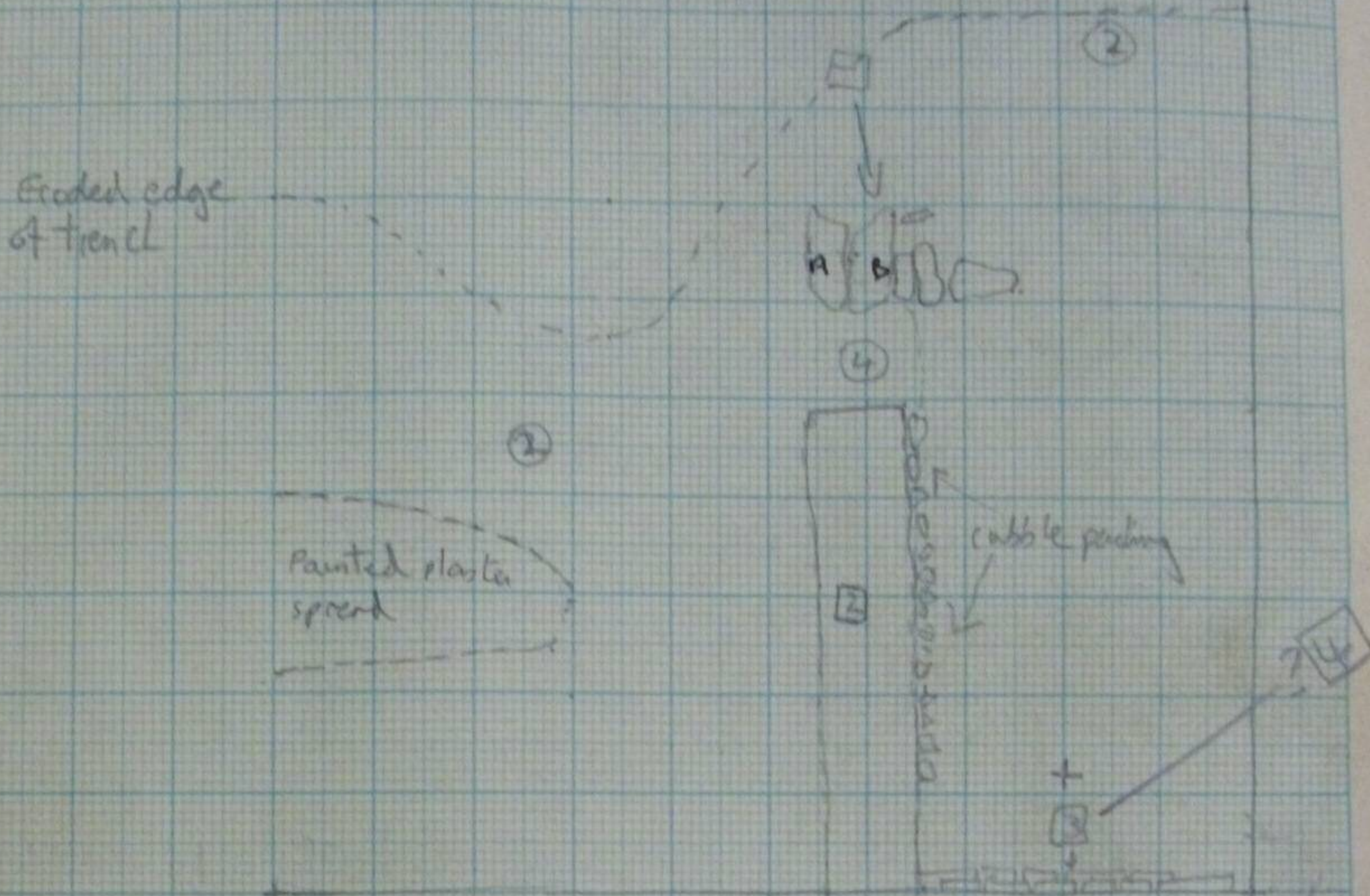
Painted plaster  
spread

cobble paving

24/25

29/25

[1] & [2] below [2] but interlocking from below





SM 76 XIII B

① Topsoil + turf

② Grey/Black soil with much rubble, brick, stone, mortar. Below  
①. Spread of painted plaster in west end (see sketch) Continued  
sagging, glazed brick. In W section plaster still joined to bricks  
Max thickness 25cm

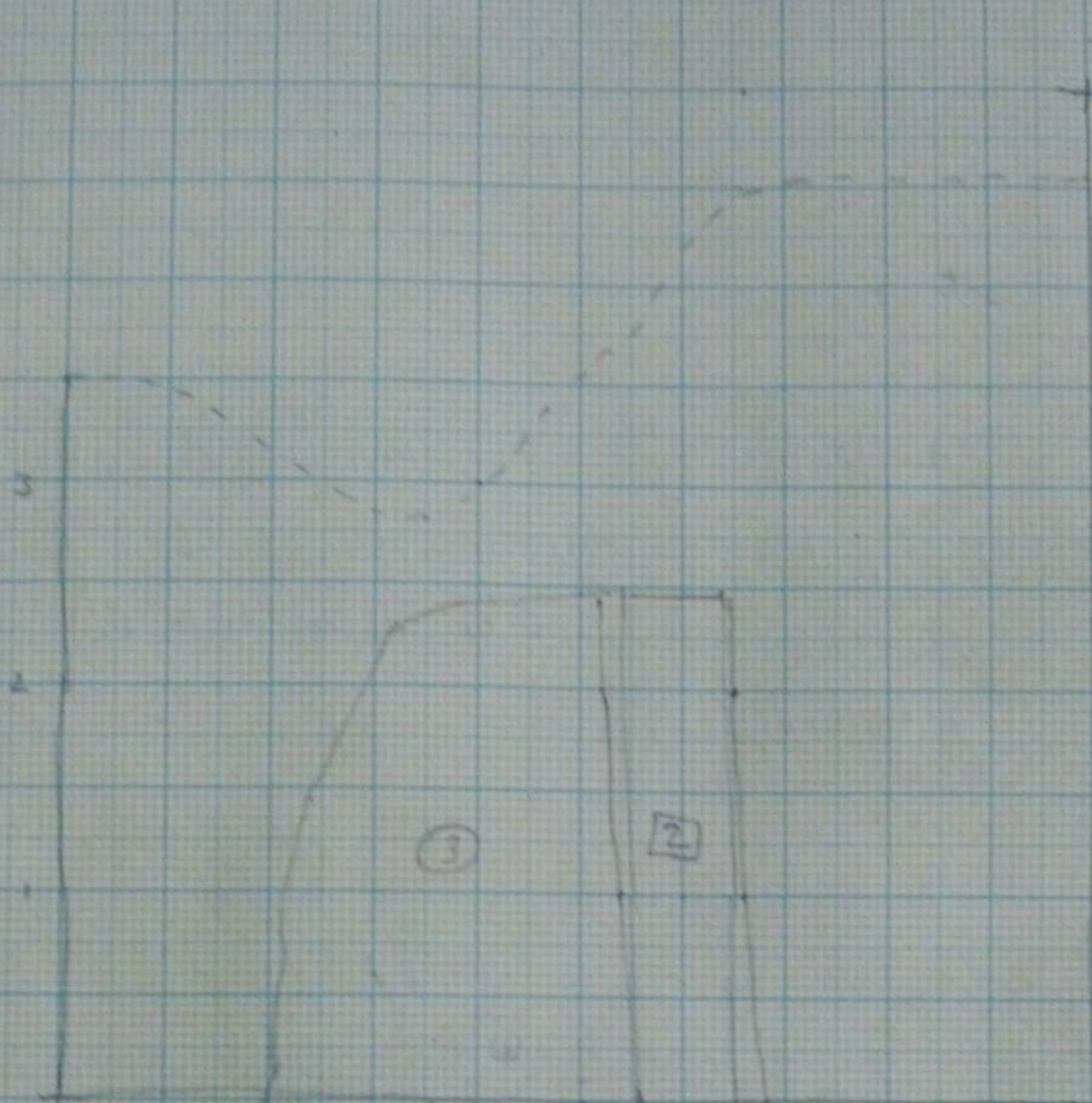
① Wall footings? Large flat stones, <sup>20x40cm</sup> seemingly running  
east west, look to be at 90° to Wesleyan Chapel  
Below ② (see sketch) but intruding up from below. 2 large  
stones (A+B on sketch) now thought to be part of ② other stones loose  
coincidental rubble

② Wall footings? Mortar and small 15cm flat stones, <sup>+brick</sup> At  
right angles to ① and at same level but not  
touching (see sketch) Below ②. Packed with brick + stone  
rubble on eastern edge in black soil. but intruding up from below  
Built into a trench then packed with rubble?



SM 76 XII B

↑  
N



30/20

24/23

29/25



③ Very hard compacted layers of small stones, earth, brick frags, mortar frags etc. Extending over most of trench area, varying depth thickness.

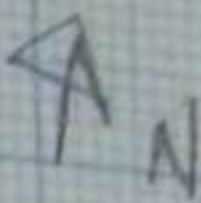
Seems to be cut by ① & ②, sloping downwards south west from ②

There are several layers of ③, the number & thickness varying according to position. Appears to be successive floor levels, patched where necessary, probably contemporary with ②. The layers in the S.W corner contain a higher percentage of soil and some coal frags.

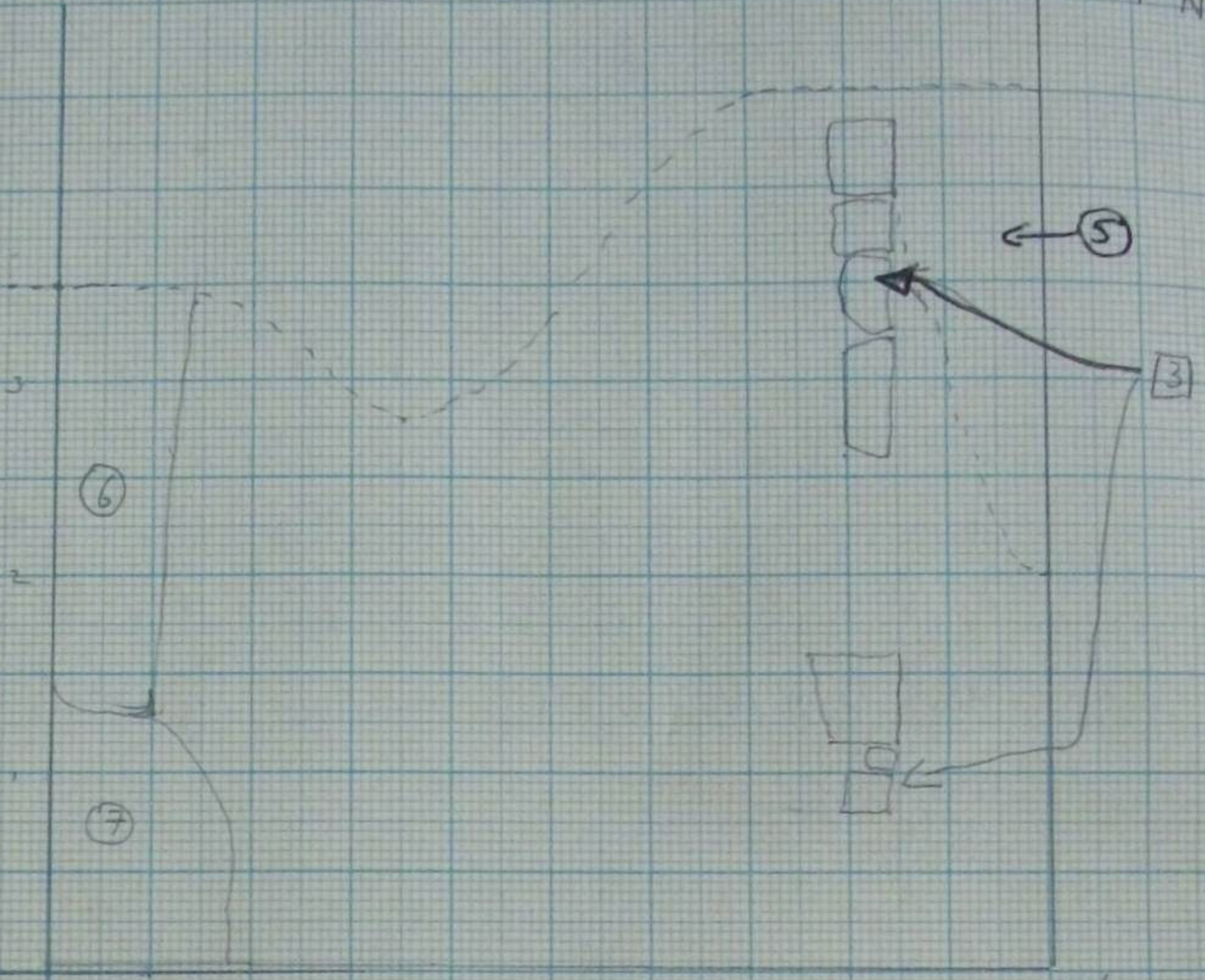
In the western end ③ underlain by small stone (10 cm) rubble. (Shown in section)

④ Area between ① & ② Stone & brick soil. An extension of trench for ② but only containing rubble fill and soil.





Eroded  
Edge of  
Trench



6

7

5

3

29/25



⑤ Brick & mortar <sup>hard packed</sup> rubble below ③. In ~~W~~<sup>E</sup> end of trench ~~cut~~  
 by ② & ④ ~~and extending just past ② & ④ in N. corner~~  
 Max thickness 7cm thinning towards ③. Found only to  
 E of ③ (see sketch)

⑥ Stone & mortar base fill. Below ② & ~~South~~<sup>W.</sup> East of  
 Tip ③. ~~Probably~~ & above ⑩. [Probably a thin extension  
 of ⑪ at higher level. More likely robber trench  
 above ⑩ for ⑤ & ⑤]

call  
 all ⑪

NB ⑥ probably construction trench for ⑦




3 Row of flat squared stones running N-S approx 75cm from ~~W~~ E edge of trench. Below 3. Cut into 5  
Back wall of front wing of manor

7 Loose black ashy soil, much black mortar. A loose tip  
Tip in <sup>Western</sup> eastern edge of trench approx 15cm thick. Below  
2, to ~~east~~ <sup>W.</sup> of 3 or S of 6 (see sketch previous page)  
No finds.  
Probably extension of 10 at higher level.

7a Recorded from sect. Level between 7 & 10 Black &  
ashy but with mud mortar & less ash. Really a  
gradual change between 7 & 10 but drawn as a  
separate layer (so ~~well~~ we all make mistakes!)



⑧ Brown soil, mortar, brick & stone flakes. In ~~SW~~<sup>SW</sup> corner of trench below  ③ towards western limit of its area. Large stones (40 cm) appearing in furthest S. W. corner. Max <sup>thickness</sup> ~~depth~~ 30 cm.

⑨ Loose brick rubble to ~~E~~<sup>W</sup> of [3]. Much saggar & kila debris.



19/25

24/25

N  
↑

19/20

24/20

Scale 1cm = 50cm



SM 76/XIII C

6

① Turf

② Topsoil Below ① Mud rubble, especially in N.W. corner adjacent to wall. This rubble is modern disturbance see sect.

③ Black ashy surface. Below ②. Only over ~~SE~~ <sup>SE</sup> corner of trench, but finds from ~~below~~ rubble level below and on a level with it were confused with it.

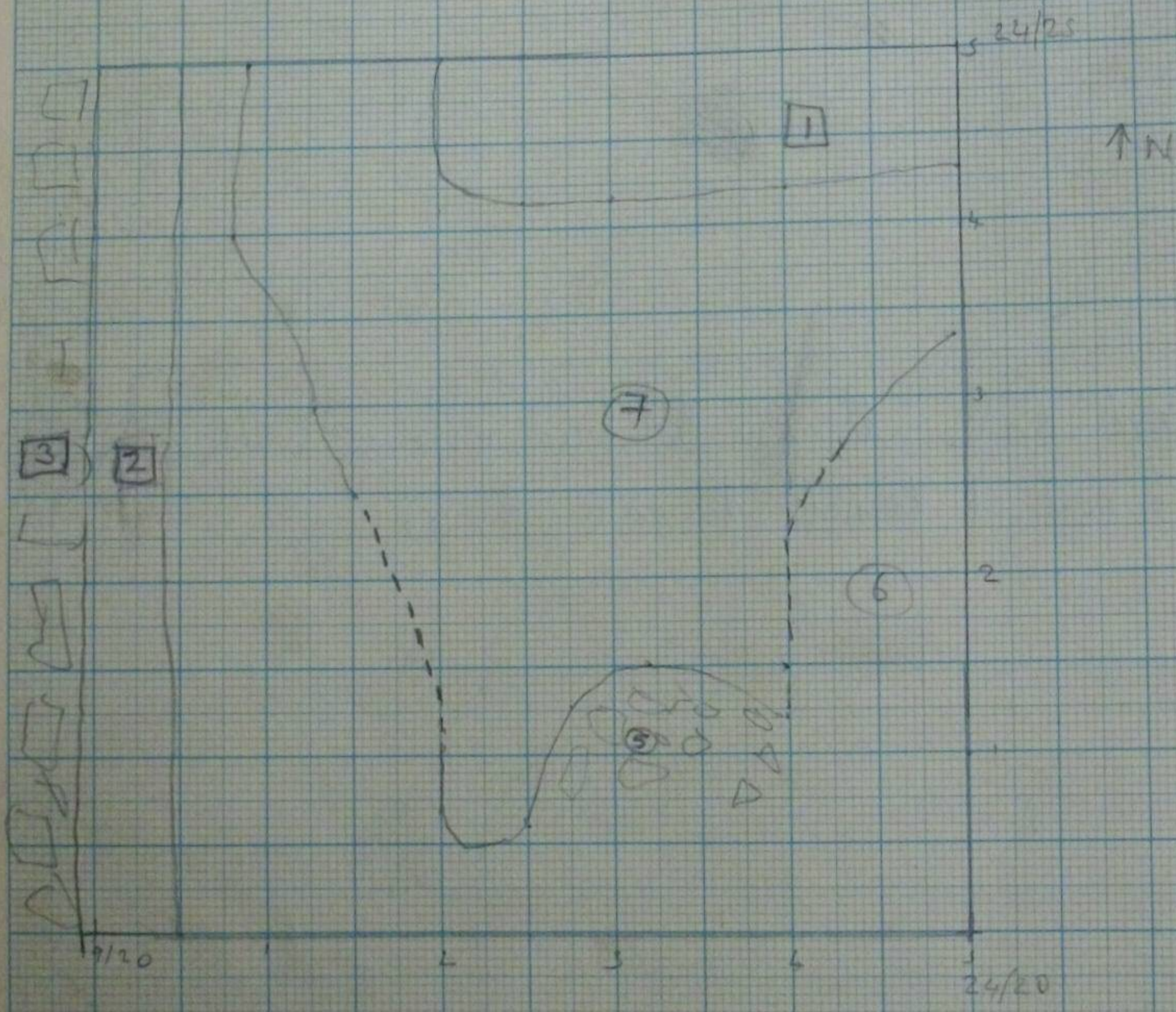
④ Below ③. Brown clayey soil flecked with mortar & mud large (20cm) stone frags.



⑤ Hard packed stone & brick rubble area in centre of trend running N-S. Below ③ & ② Mixed with ⑦ southern end. 35cm thick in N. section. Cut by ①

⑥ Brown/black soil with small brick & stone rubble. Below ② in E part of trend. To east of ⑤





Dotted lines, exact line unknown, dug away



- ⑦ Clay hard packed perhaps burnt. Below ③ ④ ⑤ ⑥  
 (See sketch - but E area dug away, exact area unknown)  
 Hardly shows in any section. Deepest in NE quadrant  
 max ~~15~~ 20 cm.

- IV ⑧ V. loose large rubble in N end of trench. Seems to cut ⑦  
 running roughly E-W. Approx 80 cm wide. Black  
 soil, mud ⑩ pottery. Extends to 200 cm south  
 of ③ [SM 76 XIII B ⑩] possibly)

- IA } Modern pot holes in E. section. Below ① IA still has pot  
 IB } remnants



3

9

Low area of

8

5

AN

4

3

2

1

2

3

4

5



[2] Slot running along edge of [3]. ~~is~~ Contained polythene therefore modern. Approx 50cm wide

[3] East wall of main wing. forms eastern edge of trench. <sup>W</sup>

(8) Brown soil & rubble. Below (7) & (5) ~~Rubble Ore~~ rubble Ore, whole area cut by [1], [2] Rubble content far greater in area down centre of trench (running N-S, position similar to (5).

The area of rubble & brown soil seemed to dip in the aforementioned central area and cut through (9). Area rather illdefined but stretched opposite. Max thickness of area 45cm

(8a) Thin layer bricks mortar crud mixed with brown soil between (8) & (9) in E section.



Tip  
⑨

Bluish purple <sup>soil</sup> ~~Thin layer~~ <sup>Cut by</sup> ~~cut by~~ 9 below ⑧. Mostly  
by in W side of trend by [3] Above ⑩. Thickness  
and content - varied over area, much coal in some areas  
Thickest in N area of trend, 25cm thick.

Tip  
⑩

~~Small~~ Blue frags & matrix. Below ⑨ Over whole trend area  
Variable in content, similar to ⑫ but in central E.  
even finds separated between ⑩ & ⑫



(11) Thin layer of ~~to~~ fine brick & mortar frags. Only in NW corner of trench. Above (9). Shows in sect. No finds

Tip (12) ~~to~~ Stone & brick with mortar in brown soil. Below & mixed with (10). See (10). Lower down (12) a definite separate layer. Much large masonry frags, notably window. Thin layer with local variations of content, esp. some black soil. Much brick & mortar.

(13) Next layer of [1] Dark brown/black soil, stone rubble, some brick.



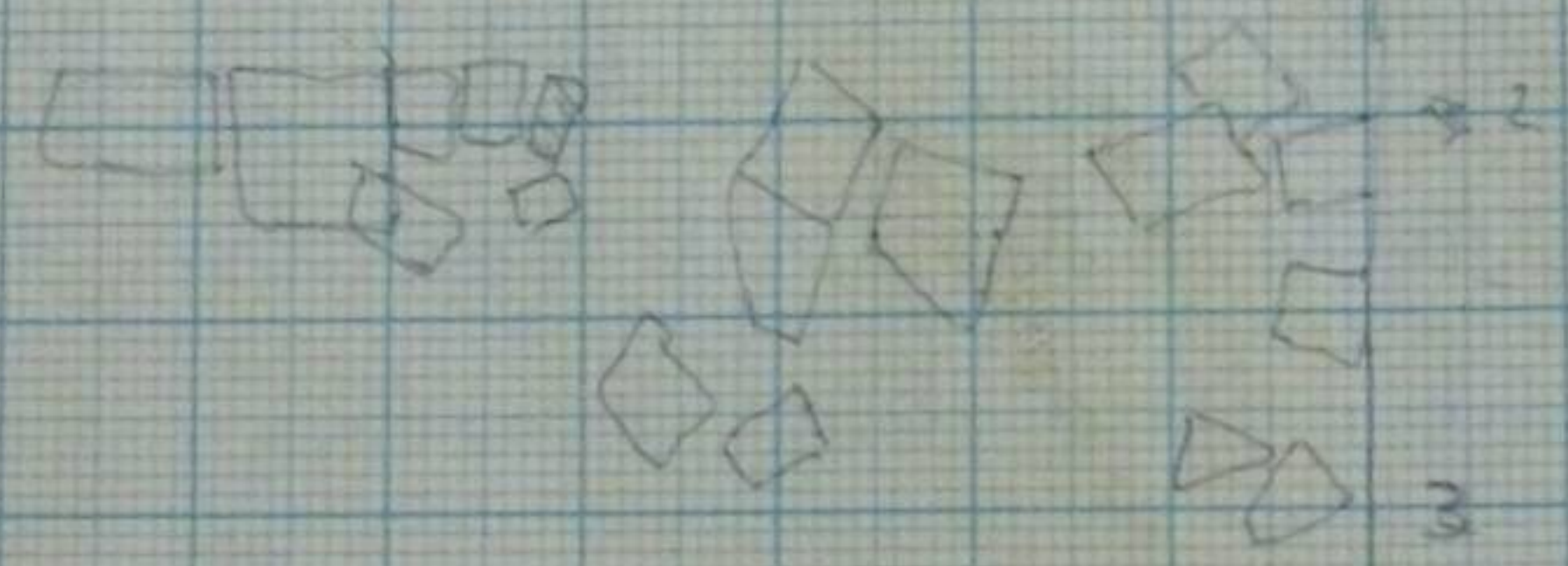
SM 76

XIVIC

Scale 1:50

1 2 3 4 24/25

↑ N



Stone slabs [4]

19/20

1 2 3 3 4

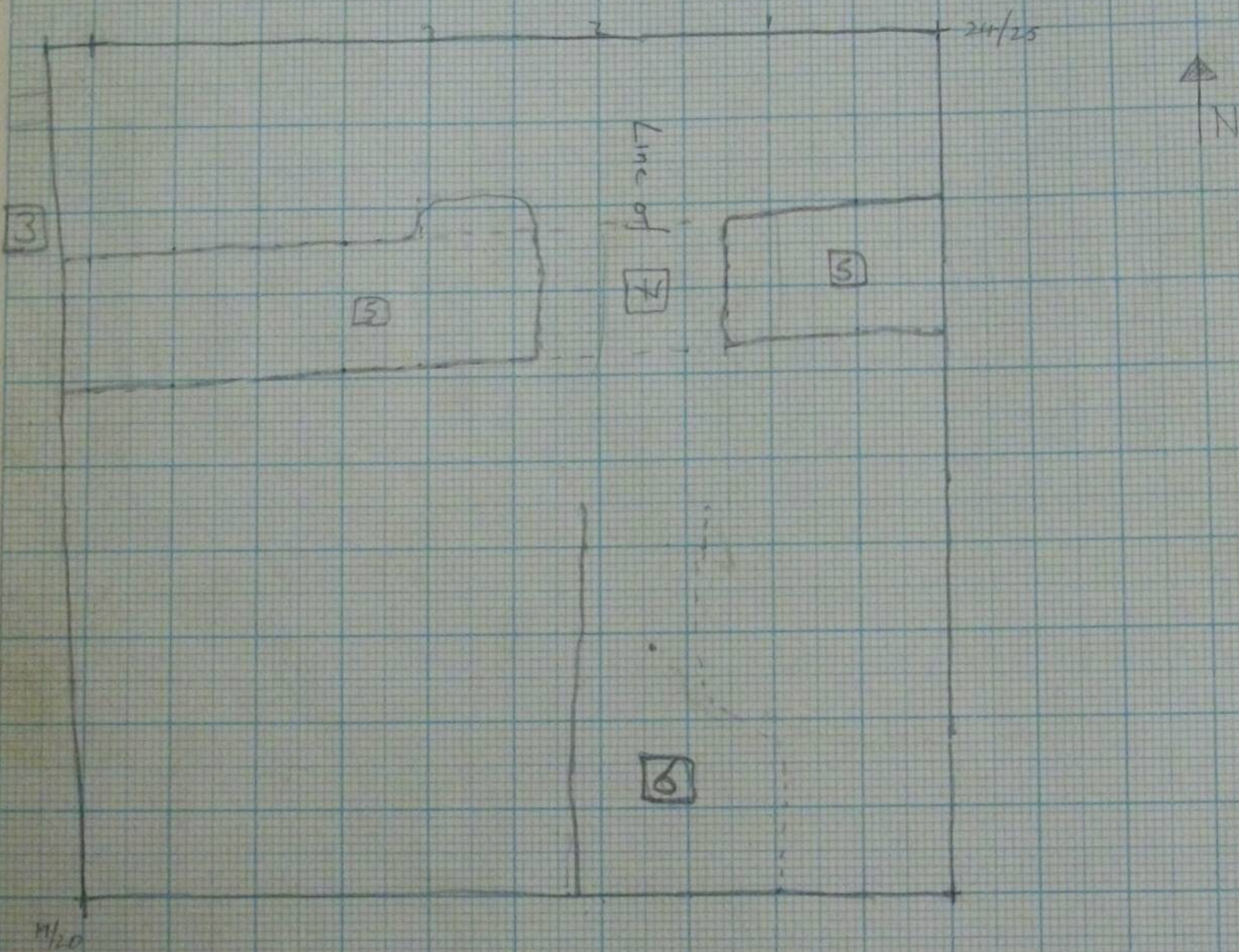


(14) Beige clay. Below (12) Mud mortar ~~from~~ crumbly  
some large stone

[4] Stone slabs Below (14) Two seem to be proper lay laid, other  
look more random. floor level relative to wall [5] <sup>and</sup> probably.  
See opposite

(15) Yellow sandy level Thin Below (14) Cut by [5]  
Not over whole area, patchy. Shows well in N. section  
Merges & mixes with (16)





Scale 1:50



[5] Robber trench for wall E-W [8]. Butts up to [4] & to N. of it.  
 Bottom course evident where [3] + [5] meet, <sup>see [8]</sup> Filled with  
 brick & stone rubble with mortar and black soil. Can be  
 seen in section from below (9) but not recognised on dig as  
 a separate layer until relationship with (15) noted

[6] Possible feature. Depression in (15) filled with plaster. Running  
 N-S to S. of [5] Max 5cm thick.



- (16) Mixed layer of decomposed stone, yellowish sandy material & some clay. Below (15) in places, otherwise below (14).  
Cut by [5] & overlain by [6]. Merges & mixes with (15).

~~267~~ SILVER COIN posthumous issue of HEN. VIII  
~~268~~ m.m. marker (1550) GREAT.

- [7] <sup>Drain</sup>~~Wall~~, running SE - NW cut into (17), overlain by (16).  
Earlier than [5] which used it as foundations where they intersected. [6] filled a depression running roughly along this line. ~~Drain, not wall.~~ Stone made, large slabs for base & top, large well cut blocks for sides. Where it coincides with the S. edge of wall [8] internal dimensions alter, perhaps a meeting of two working parties or a change in line. See ground plan.

- (17) Bad & mortar, crusted & fairly hard packed. Below (16) cut by [5].



(18) Black loamy soil Thin layer against [3] of about 65 cm width. Only seen in section. Above (19) below (17)

(19) Hard packed mortar layer. Against [3] about 40 cm wide and decreasing from a max of 10 cm to 1 cm as distance from [3] increases. Below (18), above natural.

(8) Wall footings running E-W to wall [3] in bottom of [5]. Only a few stones remaining up against [3]. The stone slabs [4] butt up to the S. edge of this and are 20 cm above it. Seems to use [7] as footings where they coincide.

(20) Brown clayey soil above natural & below (15). In section to E of (15) [7] only 10 cm thick. In E section contains varied amounts of casual stone & mortar



SM 76 XIII B cont'd from p(5)

(16)

(10) Blak ashy fill with mud rubble & brick. Blak mortar & willow pattern. (Weslyan Chapel destr?)  
Tip (7) is probably the top of the layer but will be kept separate. Below (8) in S.E. corner, & (6) on E. edge. Above (12) Now seen to cut through (11) vertically down to (5)

(11) Large stone & mortar rubble (Destructive rubble)  
Tip Above (9) & to <sup>W</sup>E of it. Below (3), (12). (6) is probably the top of the layer

called (11a) in E-W section.

(12) Brown clayey soil flecks of brick, mortar, coal.  
Tip Above (11) & to east of it



(13) Area along eroded N. end of trench. Mixed layers of  $\checkmark$  like debris & ~~modern~~ modern Topsoil

(14) ~~2~~ Purple/black ash in N. window on [3]  
Tip Below (13) & (9). Mural manor pot. Thin layer only.

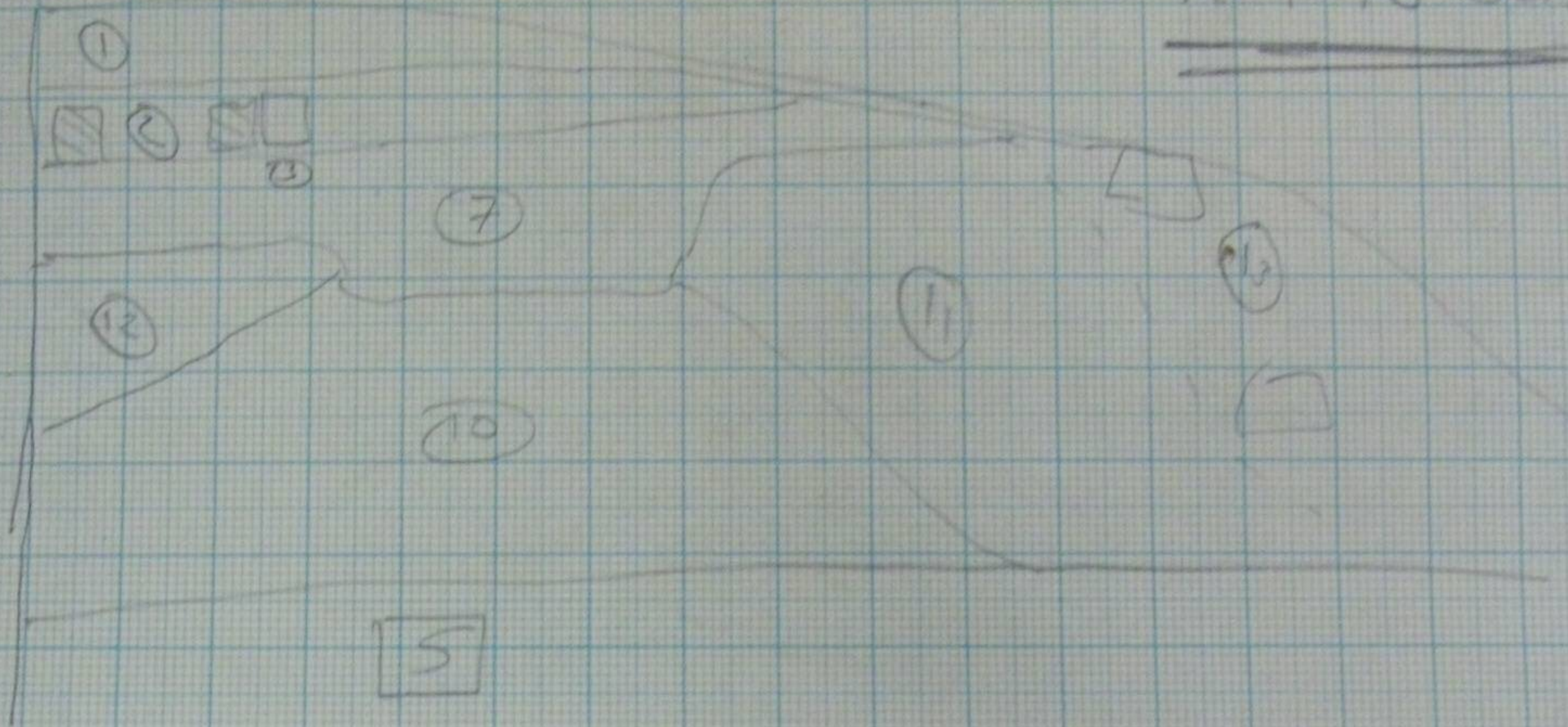
(15) Brown stony soil with much small stone, bird manure & ash. As fill of S. window in [3]. Below (9) & (11), (16)  
Tip Continues over much of trench area



RECORD  
ONLY

N →

NOT TO SCALE

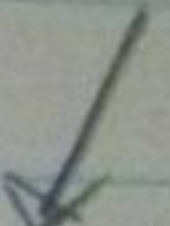


W section XIII B



[4] Well made wall in S. section running E-W. Cuts  
[3]. Construction trend contained (19) pot. Below (2)

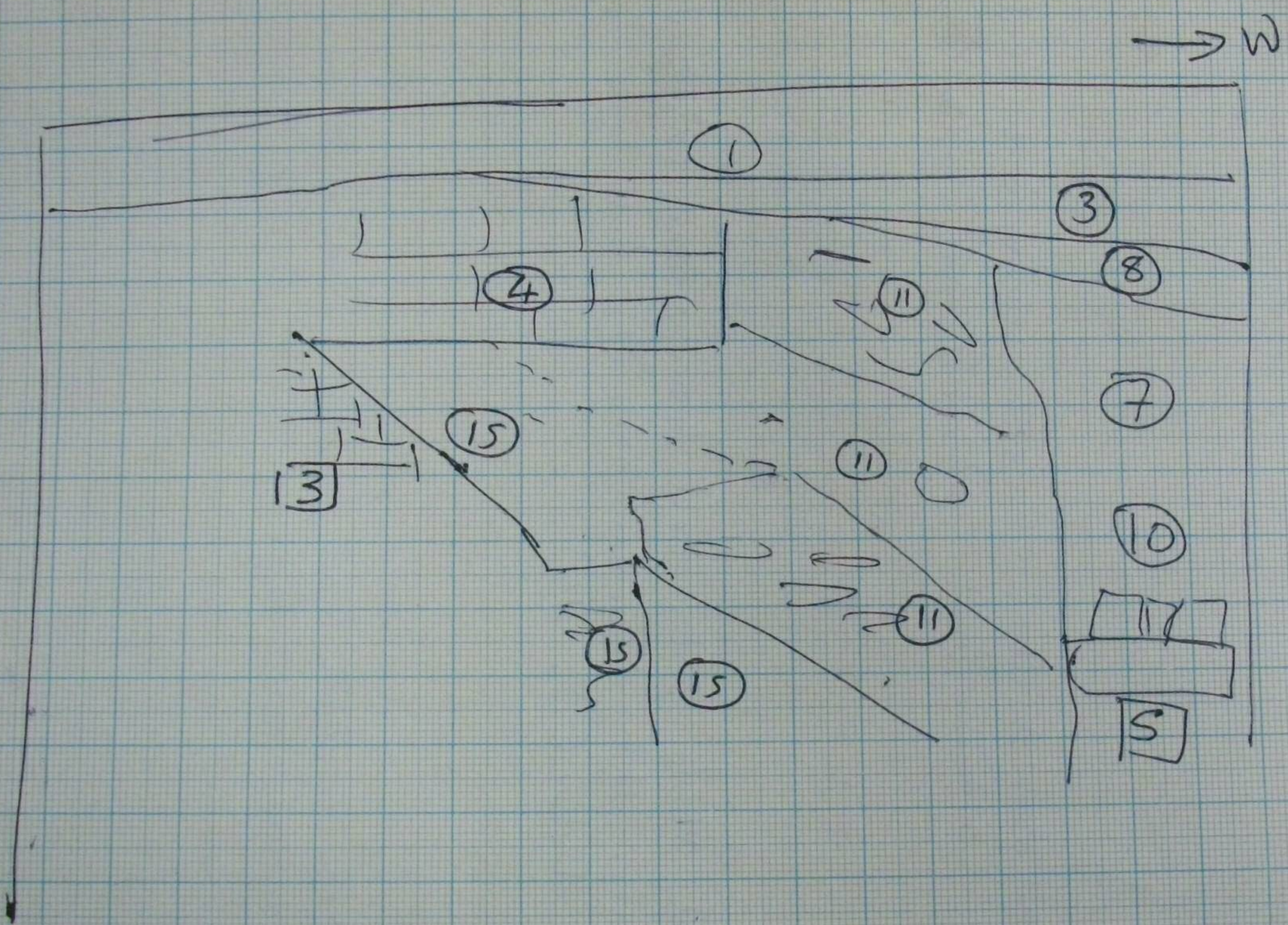
? artifacts



(T6) Brick rubble fill, light brown mortary soil & kiln debris. Not dissimilar from (9) but more brown soil Below (9), (14)

[4a] Possible construction trend for [4] Seen in section only not excavated as a layer.





NOT to  
scale

XIII B

S. section

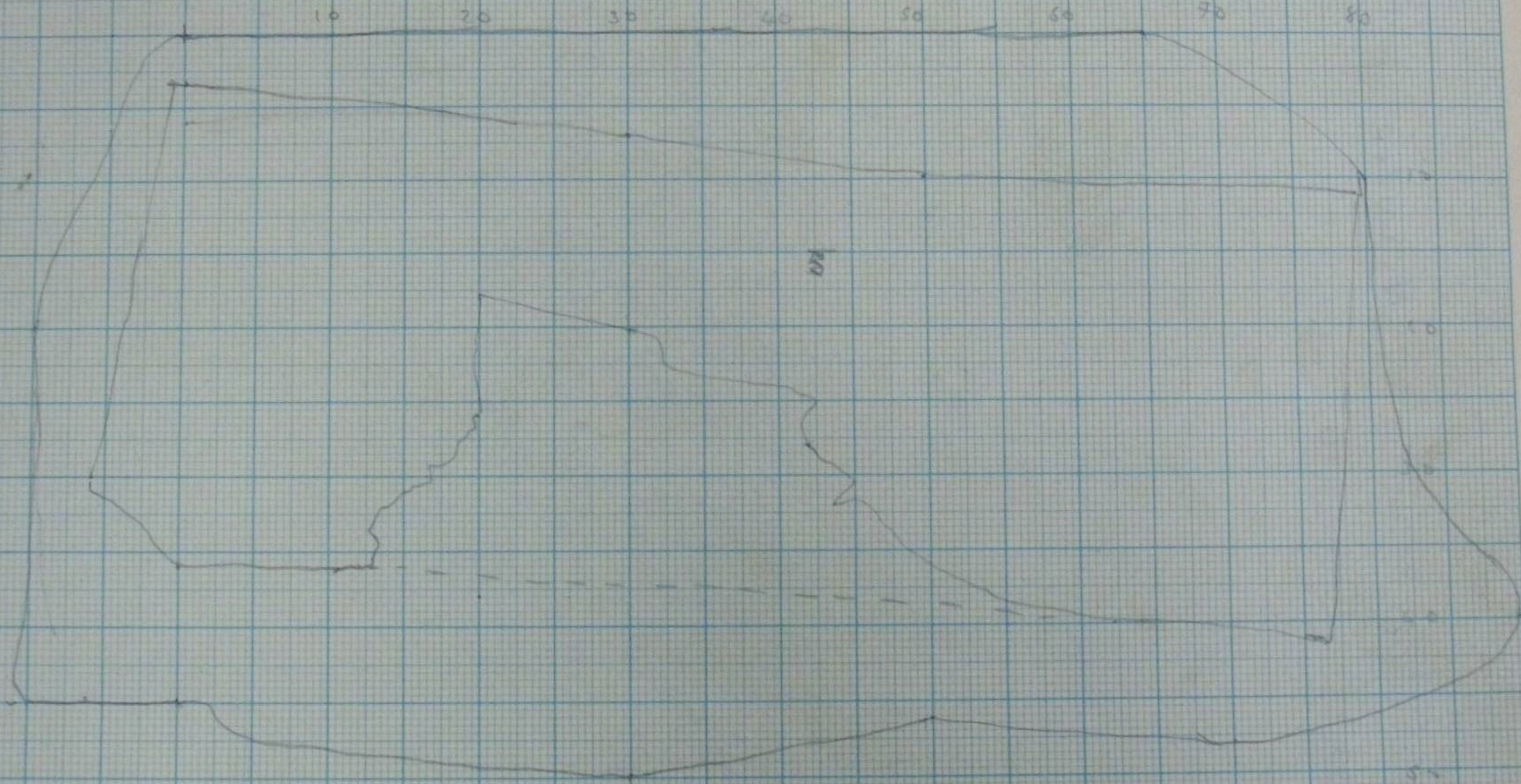


(17) Small brick frags & mortar in N window of [3] on bottom ledge Below (14)

(18) Small area A blank soil above (17) in centre of area <sup>W</sup>E of [3]. During excavation finds confused partially with (13) which is its N. edge Contains brick & stone rubble as (9) & (16)



9



Scale 1cm = 5cm



5 Wall? in bottom of 10 Very badly made, black mortar.

19 Mud whole brick, mortar black soil & ash. Below 16 & 18. Difference from 16 only in black ash content. Large pieces of stone masonry towards bottom of layer

20 Shaly yellow/grey clay. Below 19 No finds



- (21) Clean-ish orange/yellow clay. Below (20). Floor made up?
- (21a) Crusted brick/mortar mixed with (21). A variant of (21) in certain areas of the trench notably S + SW sections.
- (22) Mixed clean blue & dirty grey/brown clay with mud broken stone. Below (21). Mud bone in lower layers.
- (25) Cut through (21) feature with organic material. Mud wood, some leather. Against (3) see sketch on previous page. Position - S edge of feature 170 cm from S end of trench.



(23) Layers of hard packed blue soil + small stones To E of [3]  
 Various layers, mainly numbering ~~3~~ three, but some patching  
 evident No finds kept but (19 in top layer

(24) Small stone & mortar Hard packed. Below (23)

(25) Fine crushed brick & mortar Below (24)

[7] Wall, in W. section only, running E-W. Possibly joins  
 [5]. Roughly made, blue mortar @ 19?

NO - probably  
 latent



[8] Cross wall of [3] in N end of trench running E-W.  
Well made faced stones, packed with yellow clay.  
(Record purposes only)

(26) Area between [7] + [8] Partially excavated previously.  
Full of mixed mortar & clay with some small  
stone. Above (21).

(27) Below (19) in SE corner, against bottom of [3]  
Mixed layer of fine clay, mortar charcoal & brick hoop.  
Not excavated as a separate layer. Above (21a)