

1976

John Burton

Dept. Archaeology

Univ. of Sheffield

SHEFFIELD MANOR

SITE RECORDS

VOL. 14

1976 (2)

AREAS XIV XV

LEVELS

SMALL FINDS

PLAN of EXCAVATION.

1976

AIM (a) To continue along W-front of main house from where A. Butterworth left of in 1970.
Area excavation - SITE XIII.

(b) To investigate southern half of inner courtyard.
Trial Trenches { (i) Possibility of cross wing - SITE XIV.
(ii) " " continuation of E wing - SITE XV.

GRID based on 5m squares - see main site plan.

HEIGHT DATUM S.E. Corner of Turret House - bottom of lower string course.

FINDS (1) Small finds - numbered individually eg $\triangle 10$ & plotted 3 dimensionally. See Finds Assistant.
(2) Quantities - into trays; one for each layer & a new one each day.

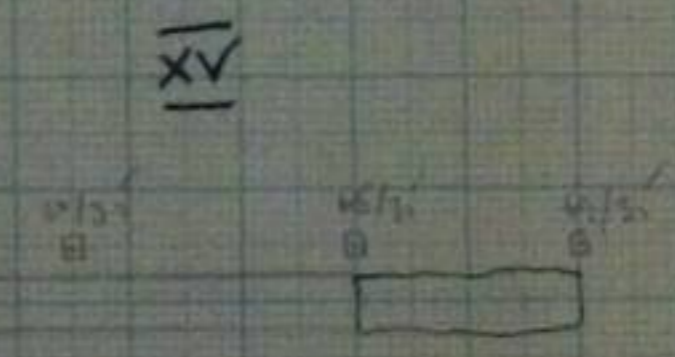
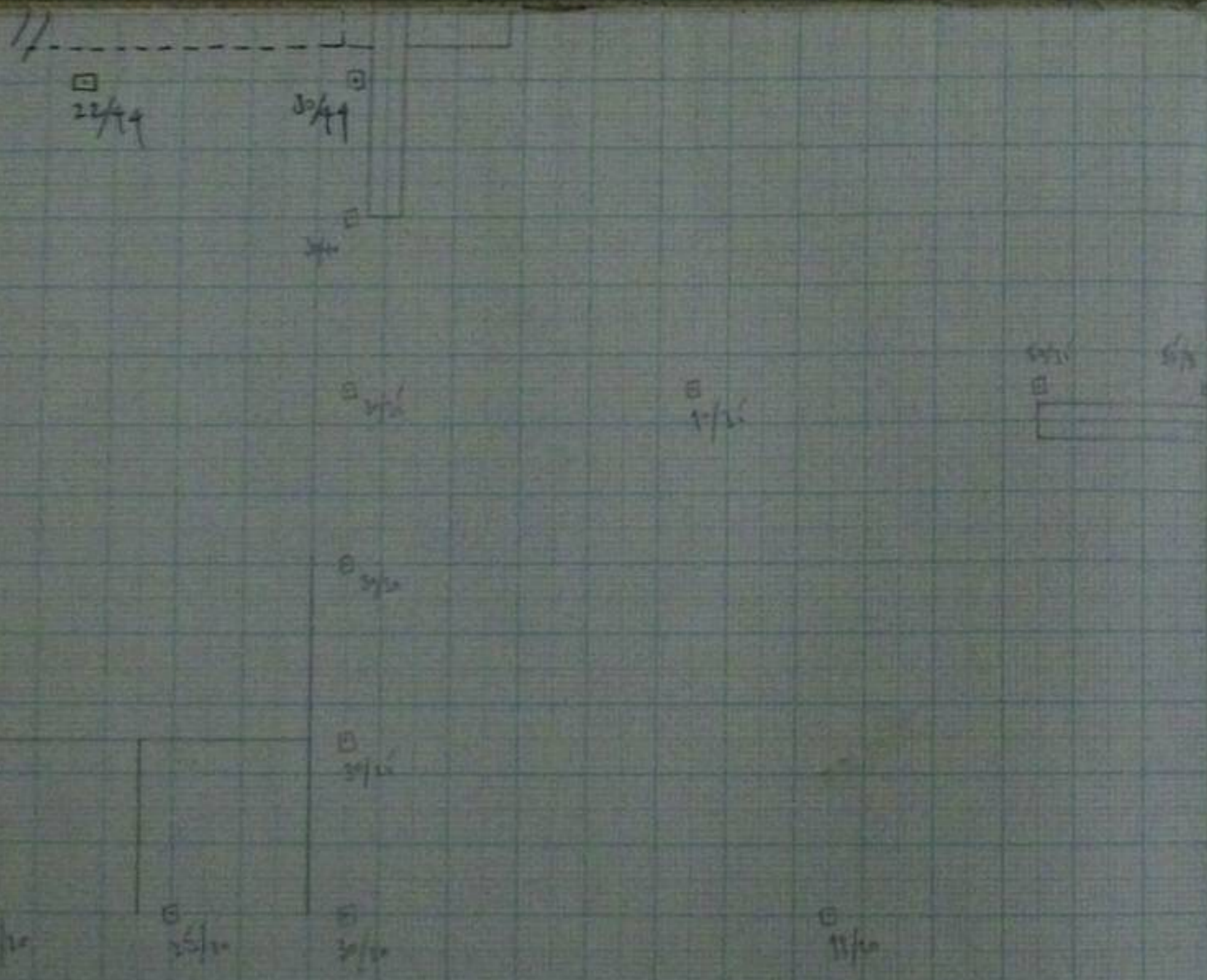
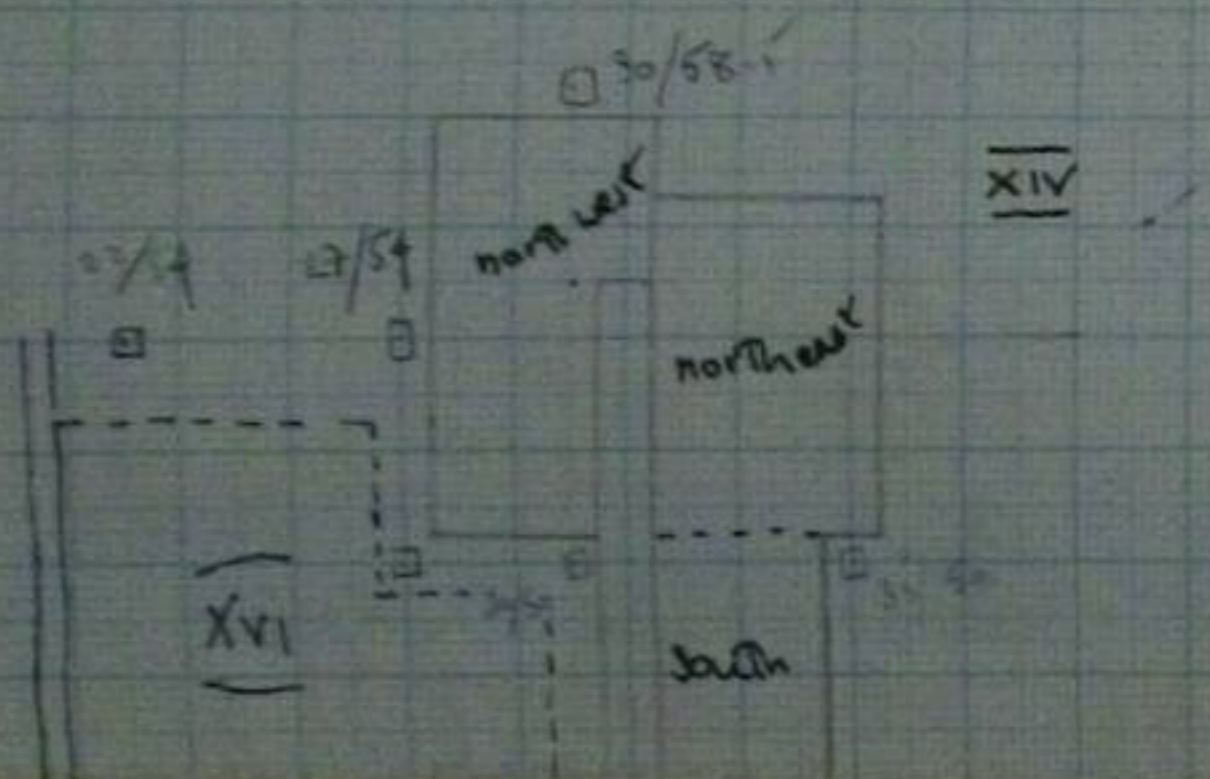
2 LABELS per tray:

eg. SM 76 / XIV / ⑤ mortar & rubble deposit.

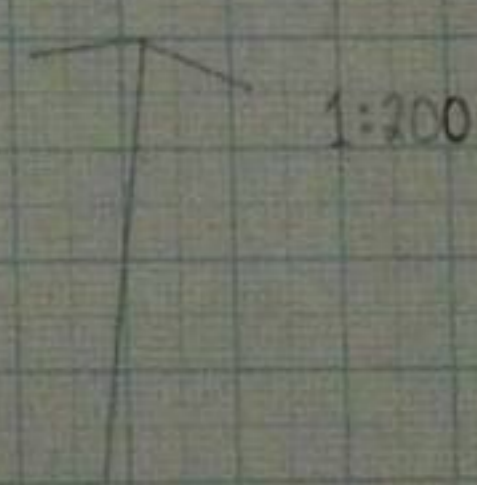
Record significant deposits & scatters on layer plan in site notebook.

LAYERS Number conventionally eg. ③. NB Topsoil ①.
Detailed description & plans in site notebook.

FEATURES Number conventionally eg. [4] - consecutive numbers for each Site.



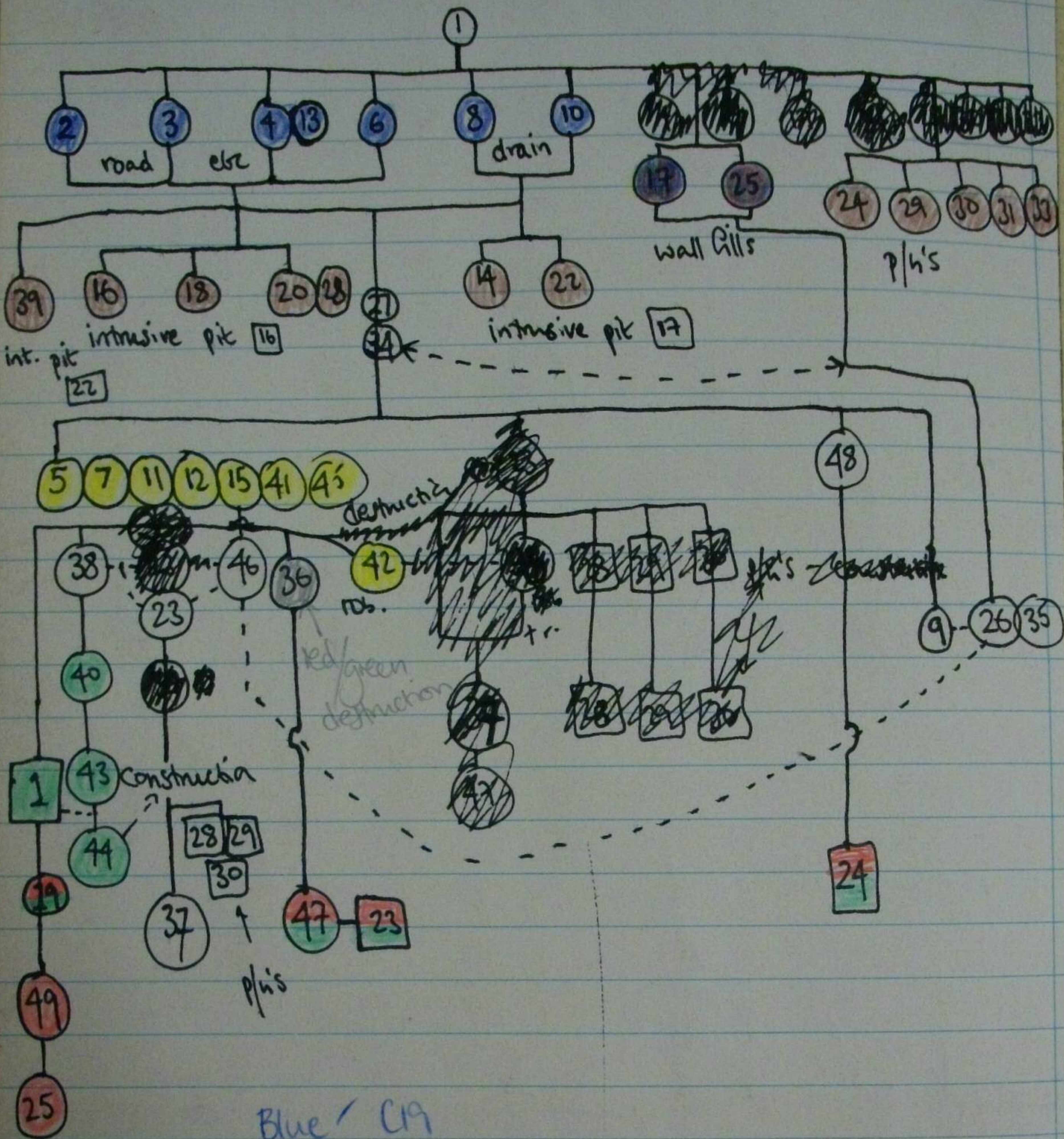
SM 76



1:200

General Grid System
John Burton 12.1.22

Phasing on the basis of stratigraphy in Area XIV :



Blue / C19

Brown / earlier

Yellow / complex 1: destruction

Green / " " construction

Red / earlier than 1

Clear / clear - strat. relationship

9.19.

list of Drawings

	<u>Plans</u>	<u>Scale</u>	<u>Content</u>	<u>levels</u>	<u>By</u>
SM 76	P1a	1:10	"main plan" of area XIV North \bar{XIV} (51) in back of this book		JB
	P1b	"	" " " " " South		JB
	P1c	1:20	triangular plan for P1a [see p. 71]		JB
	P2a	1:10	plan of road & C18 wall in XIV north; levels p. 65	east	JB
	P2b	1"	ditto etc in XIV south	"	JB
	P3	"	C19 structures in XIV north-west	p. 65	JB
	P4	1:10	" " " XV		JB
	P5	1:10	plan of Plonish Trench XV feature [3]		JB
	P6	1:10	plan of structures in Trench XV [3][4][5]		PB

join together effectively

see relevant plans for horizontal location of layers

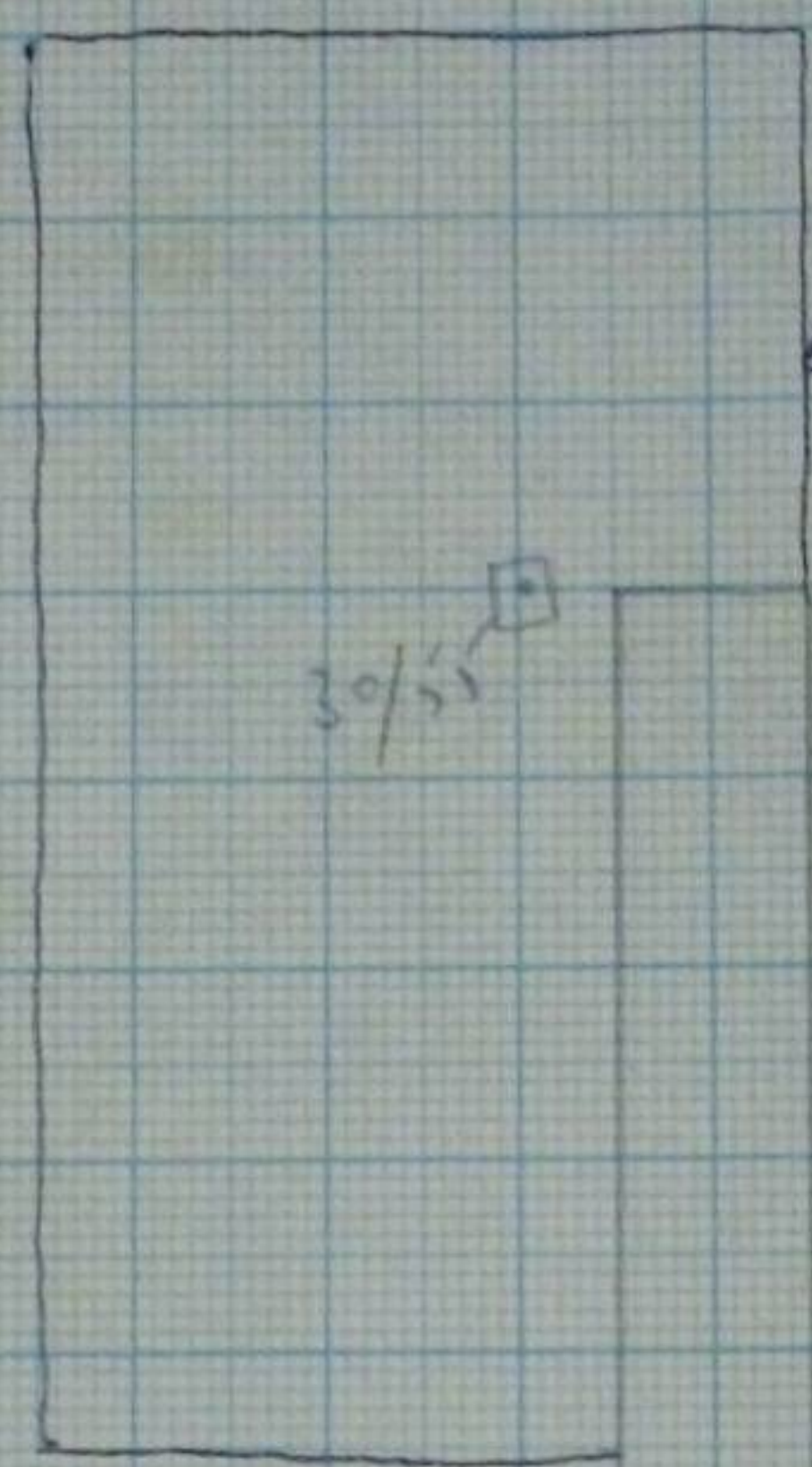
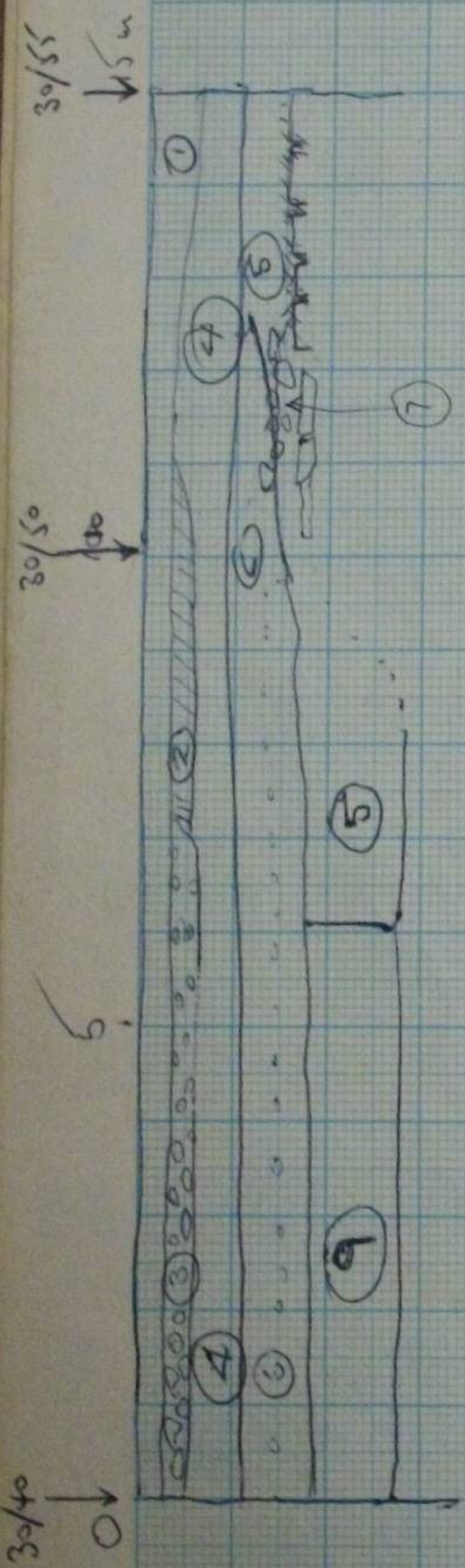
Sections Scale Content

layers nos.

SM 76	S1	1:10	"Trial section" in Trench XIV	(1)(2)(3)(4)(5)(6)(7)(9)(11)(12)(13)(15) (23)(27)	JB
	S2	1:10	N.E. section of XIV	(1)(4)(15)(22)(48)(21)	PB
	S3a	1:20	W. section of XIV	(1)(5)(8)(16)(18)(19)(20)(23)(28)(37)(41)	PB
	S3b	1:20	western S. " " "	(1)(2)(4)(5)(6)(8)(32)	PB
	S3c	1:20	eastern " " "	(1)(15)(14)(22)(25)(26)(39)(42)(46)	PB
	S4	1:10	SE-W section of [3] in XV	(1)(2)(4)(5)(6)(7)(8)(9)	Fon
	S5	1:20	South facing section in XV	(1)(2)(3)(4)(5)(6)(7)(8)(9)(10)(11)(12)(13)(14)(15)(16)	PB

Grid location

6



9.8.76

30/40

SITE XIV

7.8.76: trial trench 15m x 1m laid out

- SI ✓ (1) topsoil 15-30cm depth.
- SI ✓ (2) ash lens 7-11m [on sketch]
- SI ✓ (3) medium* rubble of sandstone (+ brick) 0-7m.
about 15cm in depth.

* 10-20cm rubble
 ** < 10cm rubble

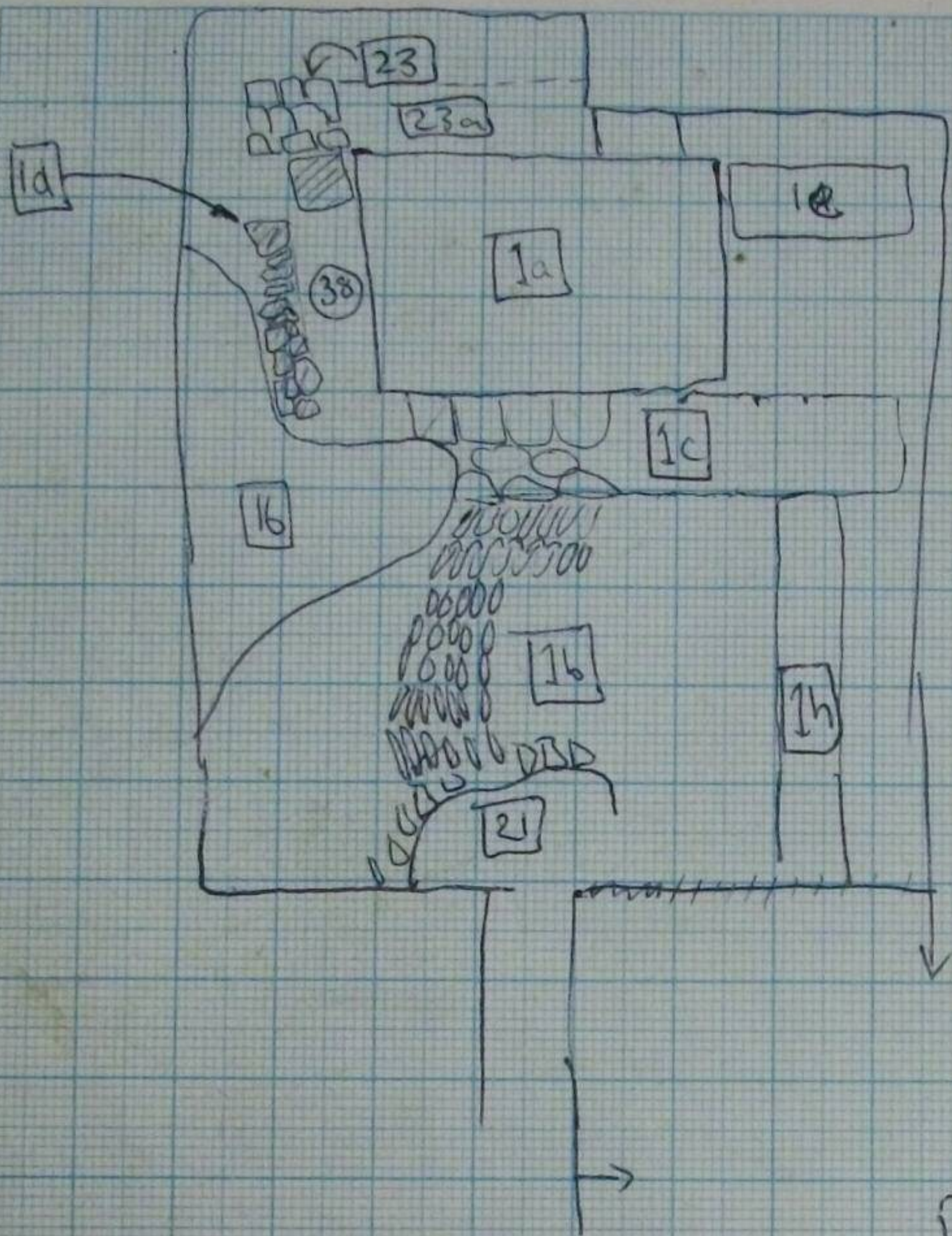
- SI ✓ (4) packed/trampled ashy surface - continuous below (1) (2) and (3)

10.8.76 TRENCH EXTENDED AS ON PLAN to trace [1]

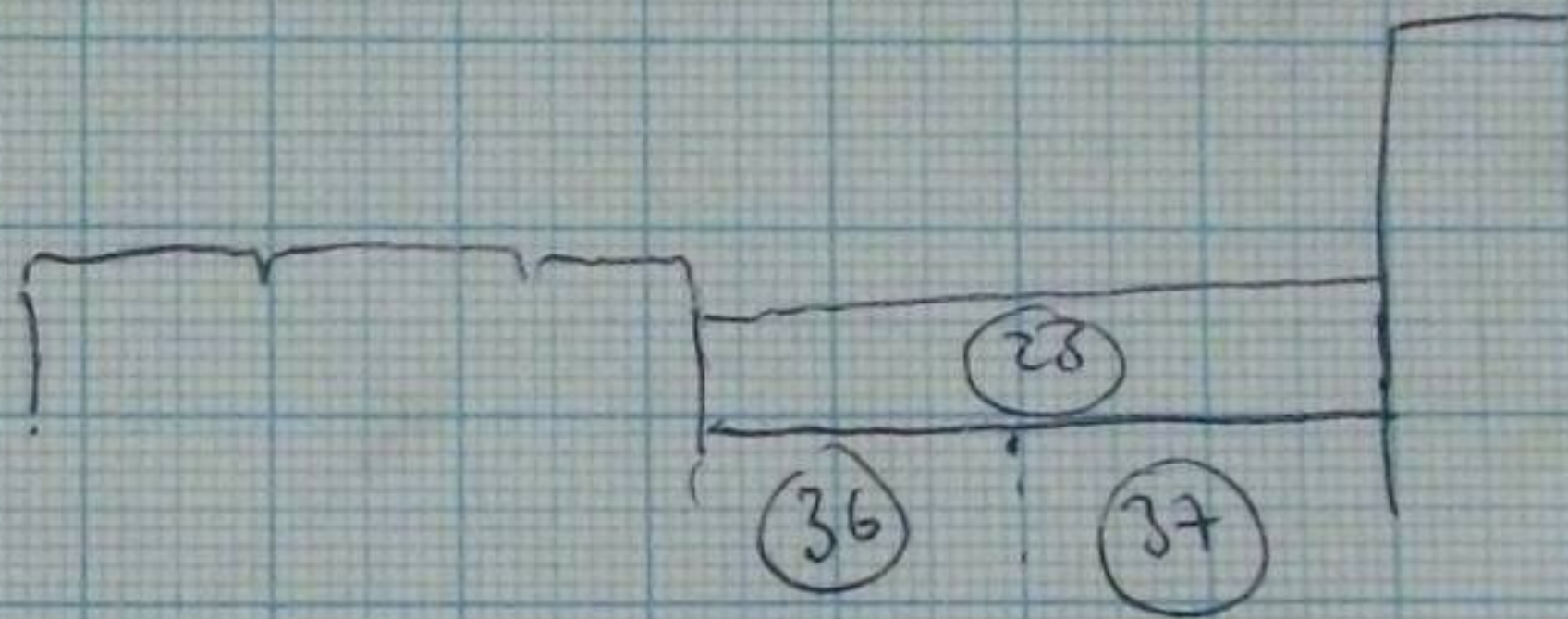
- SI ✓ (5) plaster / broken brick rubble ~~overlying masonry~~ at ~~5m~~ ^{Small**} ^{over [1b]} ? 1708 destruction level, under (6). 6m - 12m
- SI ✓ (6) Solid road-type surface of ash / small rubble packed and indurated. See features [2]

12.8.76

- SI ✓ (7) plaster [masonry] rubble over masoned structures from c. 14m - 17m.
of (15) (11) + (5)
- P3 (8) Topsoil in/on the drainage system [3]
- SI ✓ (9) Stony rubble in brown loam abutting (5) at 6m + under (6)



Features 1
and 16



Features

[1] at approx. 30/52 in the trial trench, to 30/55 a masonry structure was encountered consisting of vertically set ~~brickwork~~ ^{stone work} abutting a mortared stone wall footing. A large slab lay directly on top of the brickwork. Interpretation [10.8.16]: a possible cellar roof, barrel-vaulted.

The 1 x 15 m trench was extended [as on plans] to take in more of this feature.

[1a] The masonry to north 71 cms high bricked on mortar & all mortared

[1b] The vertically set stonework

[1c] an intervening wall. c. 75 cms high. all mortared.

[1d] ? paving set on plaster to west of [1a] [removed marks to excavate [1b]]

[1e] 37 cms high bricked on mortar - ragged S. face, on disturbed soil containing a combination of the Northern facing, butted on to [1a] ^{mortar a stain} see also [18]

[1f] below (38) & (43) a plaster/mortar surface joining [1a] [see notes for (43)]

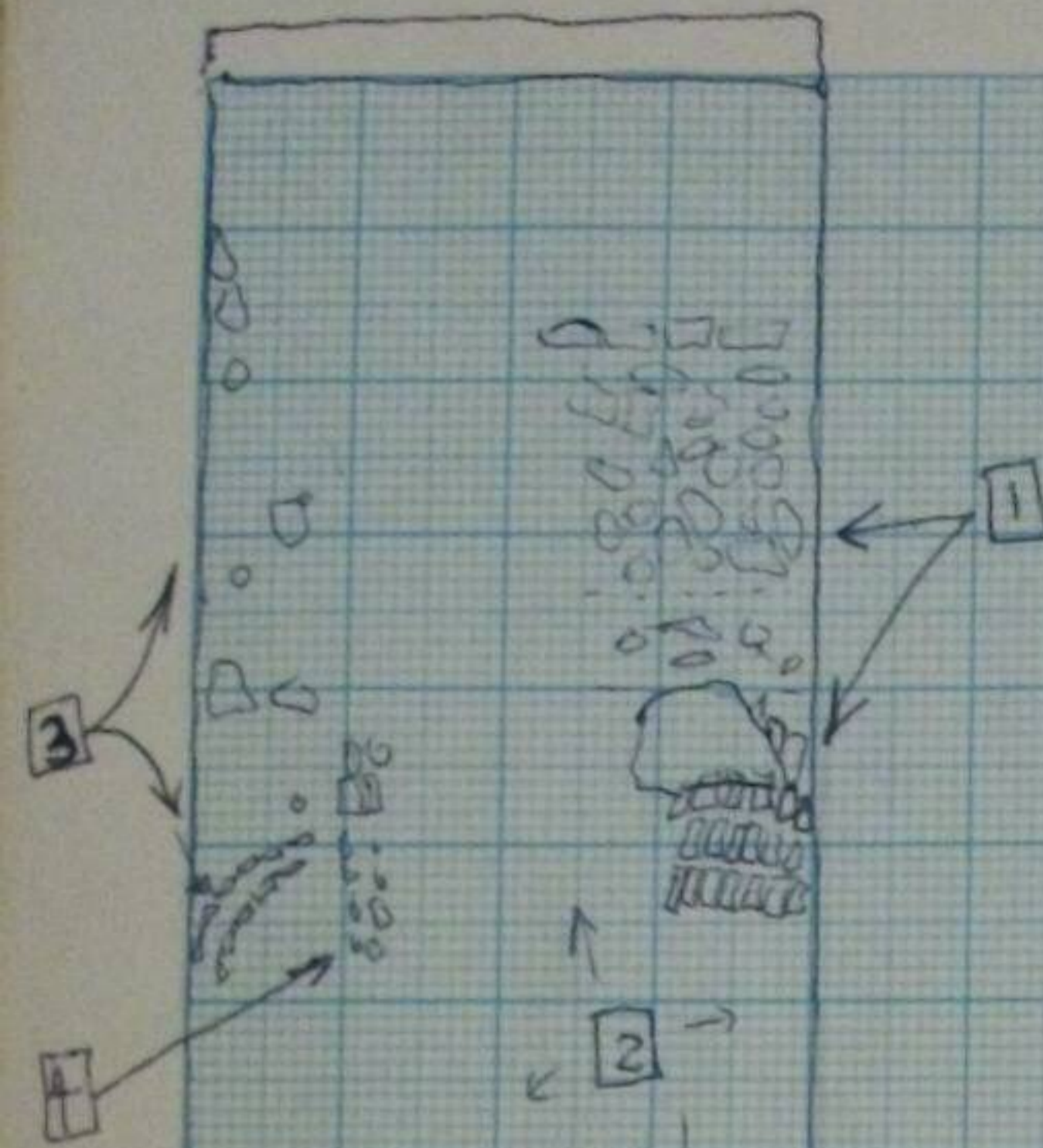
[1g] short piece of wall on the with [1e] on the opp. side of [1a]

[1h] wall bounding Eastern flank of [1b]

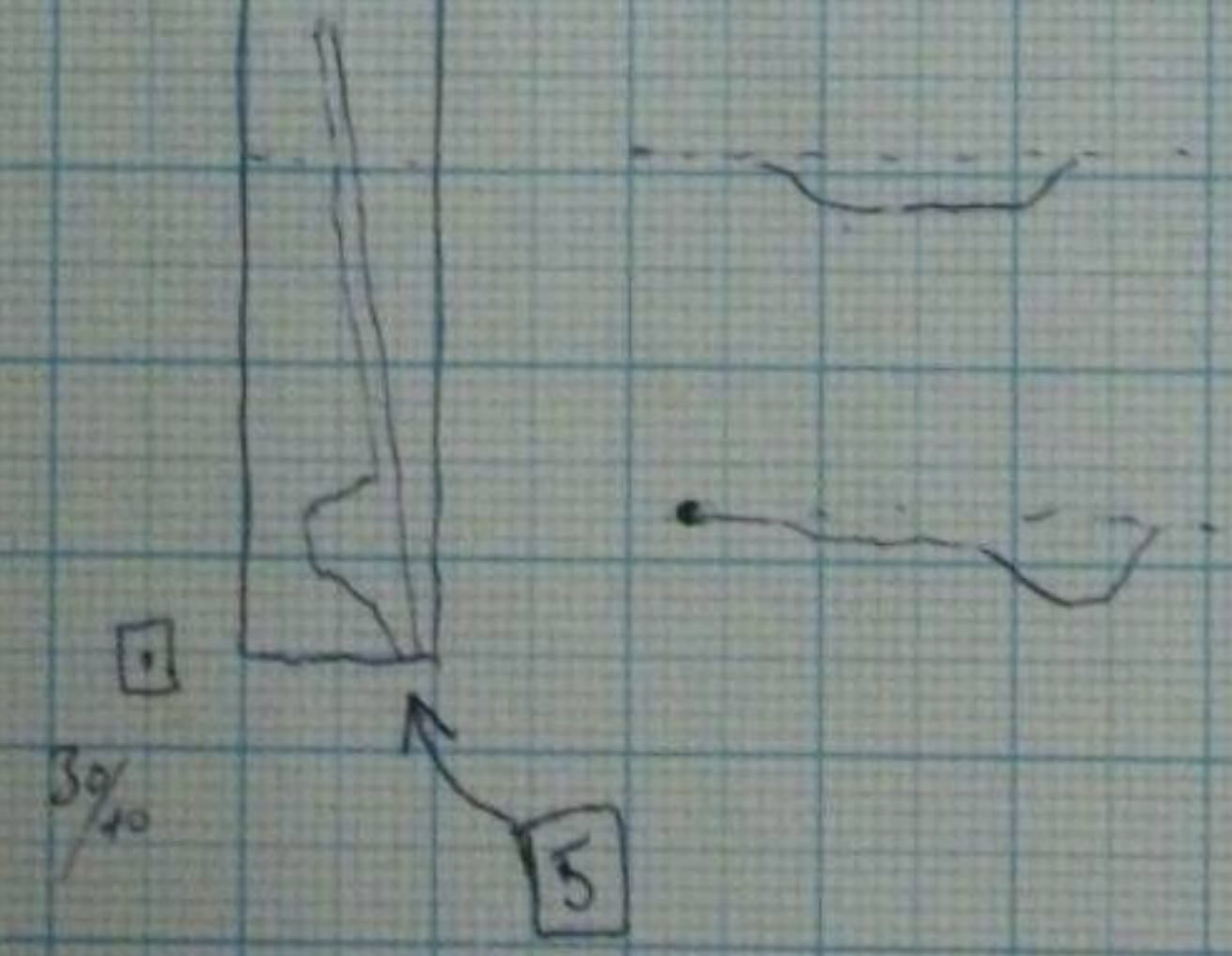
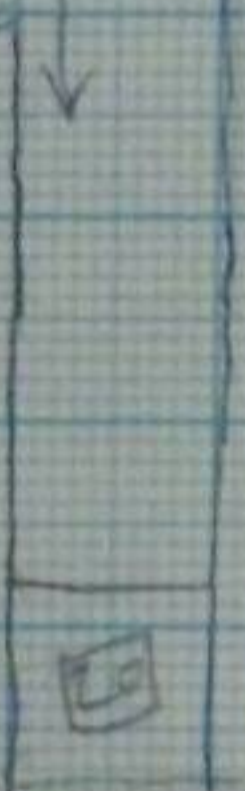
[2] layer (6) formed a v. hard tarmac-like surface, consisting of indurated ash, slag and small cobbles. This sealed layers

(9) and (5) and the brickwork of feature [1]. In the trench extension it runs to feature [4]. It did not cover the

masonry beyond 30/54 [north]. Interpretation (19) lane, associated with feature [4]



30/50



Sketch profiles of 5 at 1:10.

Features contd

[3] in the trench XIV extension, on the western margin. a ~~series~~ drain complex with C19 pottery in situ.

Cleaned 11.8.76 -

[4] wall footing associated with feature [3].

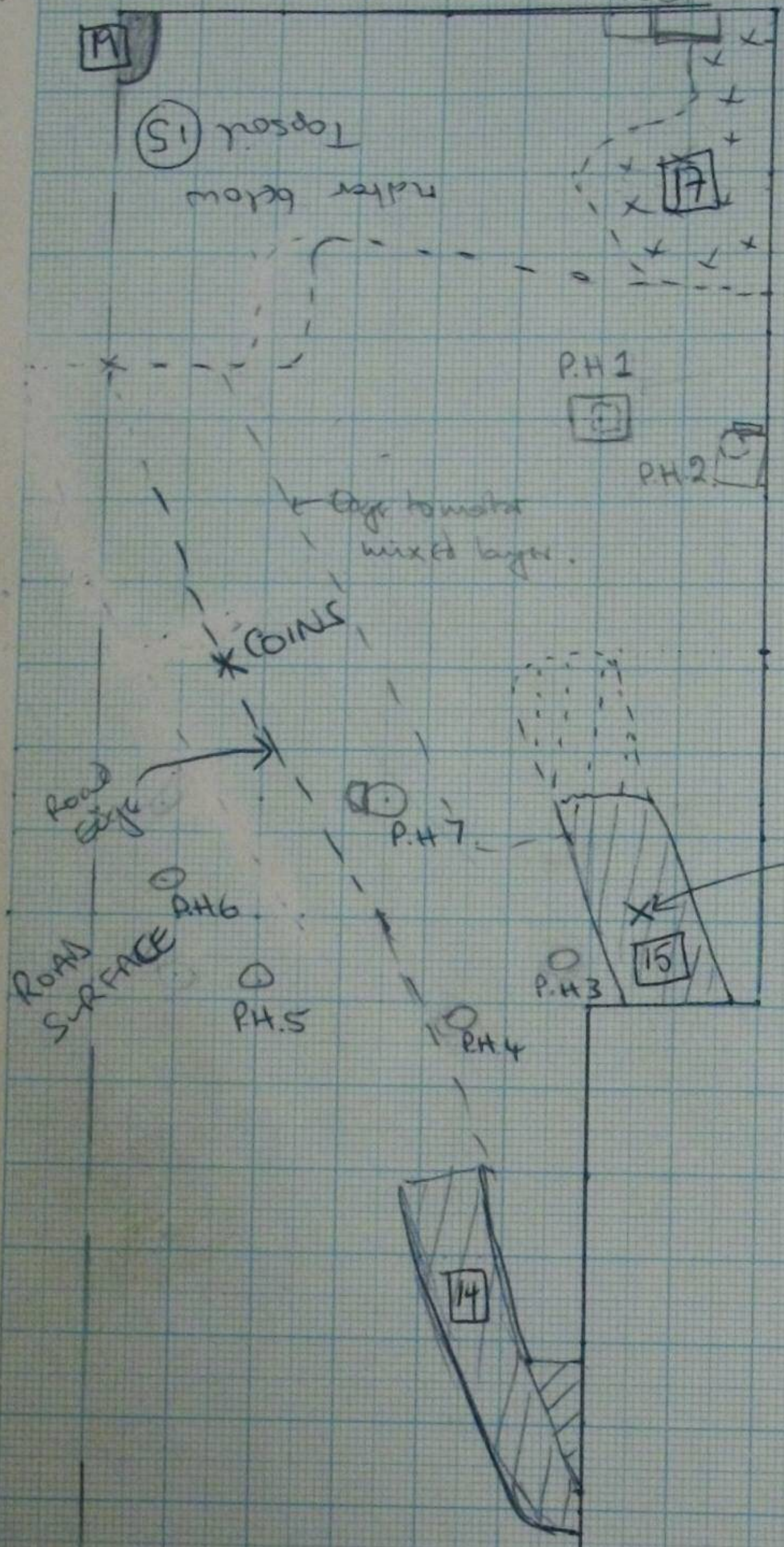
[5] linear feature, av. width 10-15 cm 30/40
length c. 3.30m disappearing into end section at
depth 2-5cm

Interpretation: ? post negative packed with plaster and pieces of
bricks, formed during the deposition
of layer (9)

12
N
↑

Extension to XLV
18.8.76

2 stones
2.2 meter



/// Walls
 - - - - Wall Trench.

x x Dark soil
 x x x stone
 intrusion into
 top of matorred
 layer.

Some packed
 hole.

13. 8. 76

- P3 ✓ (10) drain fill. black humus and/or local topsoil
 ↳ [3] see P3 =

15. 8. 76

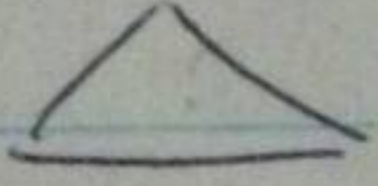
- S1 ✓ (11) loam with plaster sealed by metalling of [2] beyond
 [11]

- S1 ✓ (12) plaster & brick fill [essentially (5)] from robber trench ~~[20]~~ [20]

17. 8. 76

- S1 ✓ (13) ash / rubble in XIV E. extension over (6) i.e. in S1 this
 is represented as (4)

18. 8. 76

Travelled down to road surface & on E. edge found ditch
 of (18) brange coine (small lined )

Peg 30/50 - 3.85m

Peg 35/50 - 3.55m

- ✓ (14) Dark soil & stone in intrusion dug into mottled
 layer at N/E end of trench (see plan opposite) in [17]
 see Pla =

- S1 ✓ (15) Plaster layer above N. wall i.e. in S1 this is represented
 by layer (11). (11) was used west of the section, (15) east of it. Pla
 see also (7) =

6 Post Hole 1 - In top of hard packed surface below layer (13) - showed up as approx ~~3~~ 35 cm square dark patch with 15 cm approx. post socket. (see plan on previous page). Fill - Victorian pottery, clay pipe stem & brick

7 Post Hole 2 - similar to 1. Fill Victorian etc.

8 9 10 11 P.H.s. 3-7 part of group. Wood in P.H. 7 & 5.
12 + Victorian pottery.

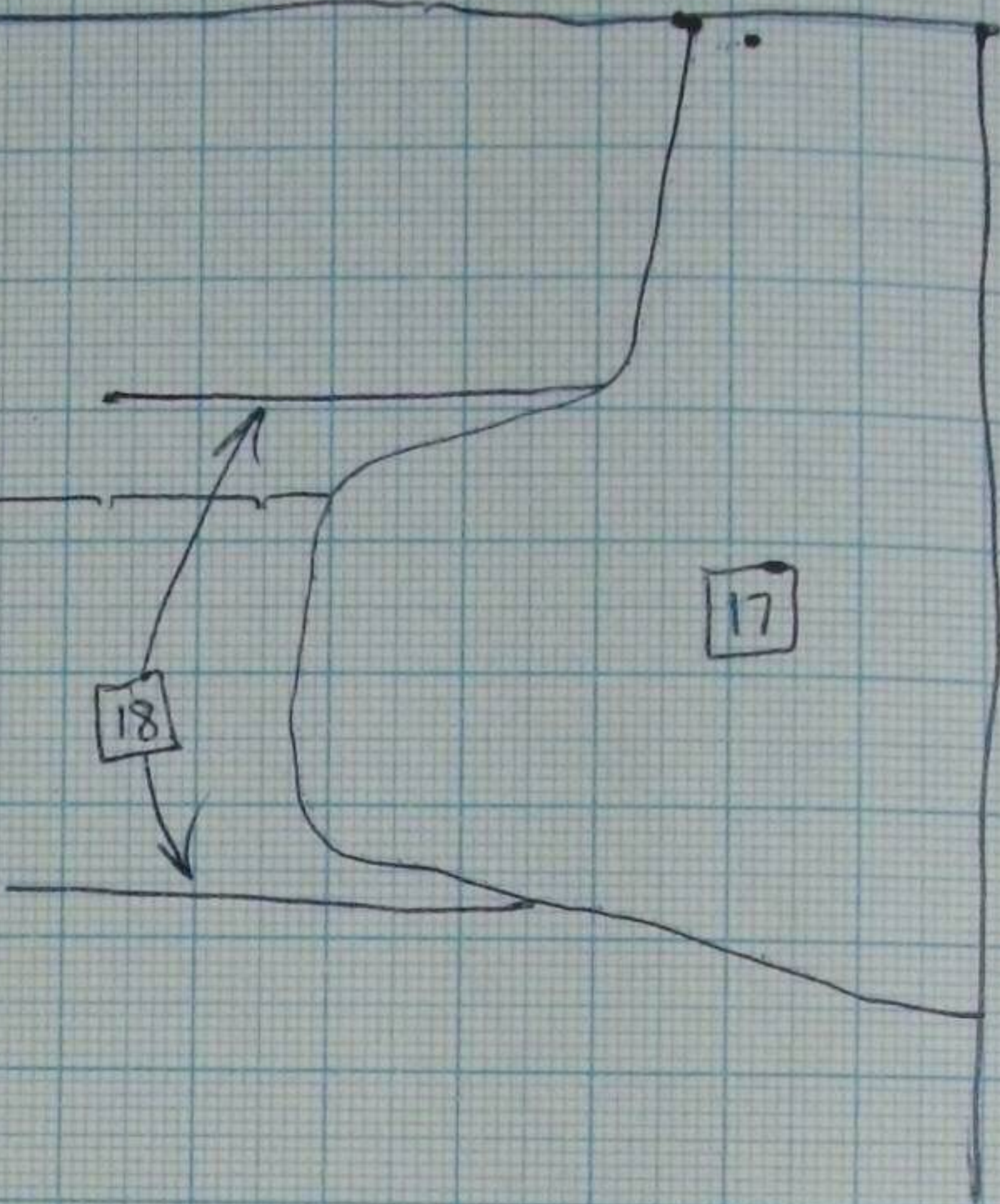
13 Feature at N.W. corner of trench - Stone-packed hole.

14 Parallel masonry walls [see sketch plan]. Drystone construction, with
15 rubble packing at the core.

19



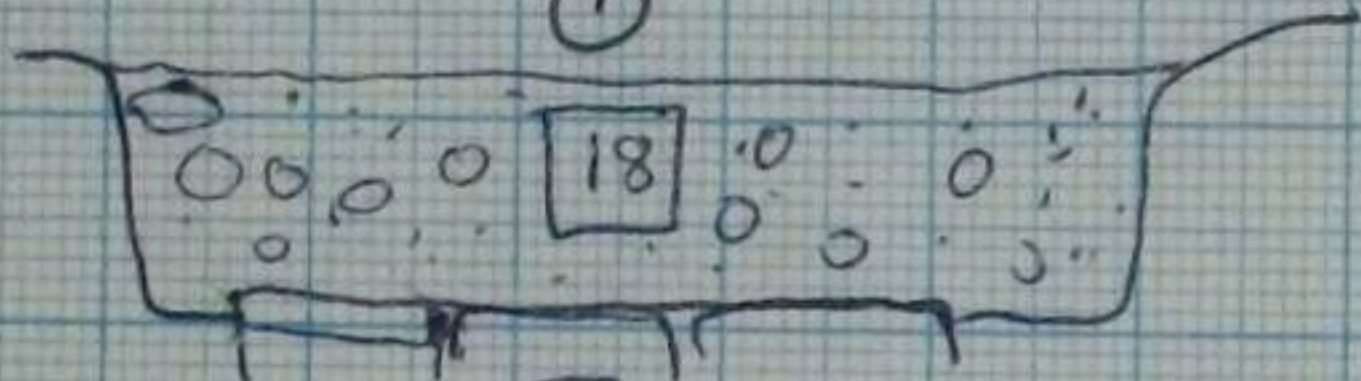
1e



17

18

1



1e

[16] [See sketch plan opposite [1]]

a pit which cuts F1

Containing black loam, stones, ash

much animal bone - butchered.

[17] a pit cut from topsoil in the N.E. corner of XIV.

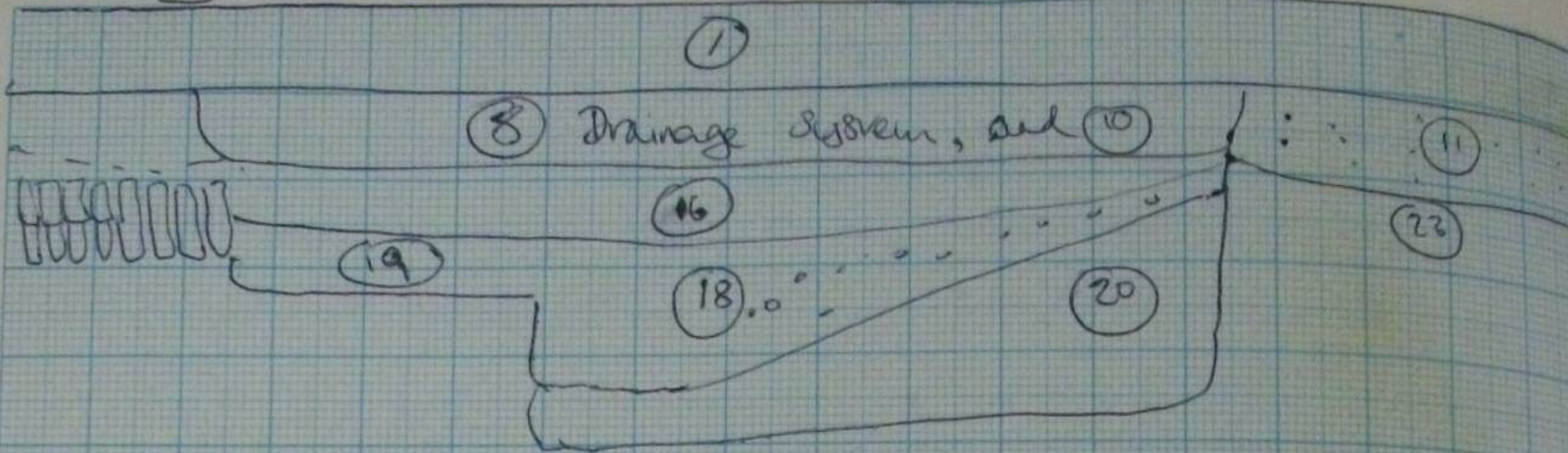
fill: a black loam with large [20-40 cm] blocks of un-mortared masonry (14)

followed by a dirty brown loamy fill with small and large sand-stoned pebbles and blocks i.e. redeposited material. (22)

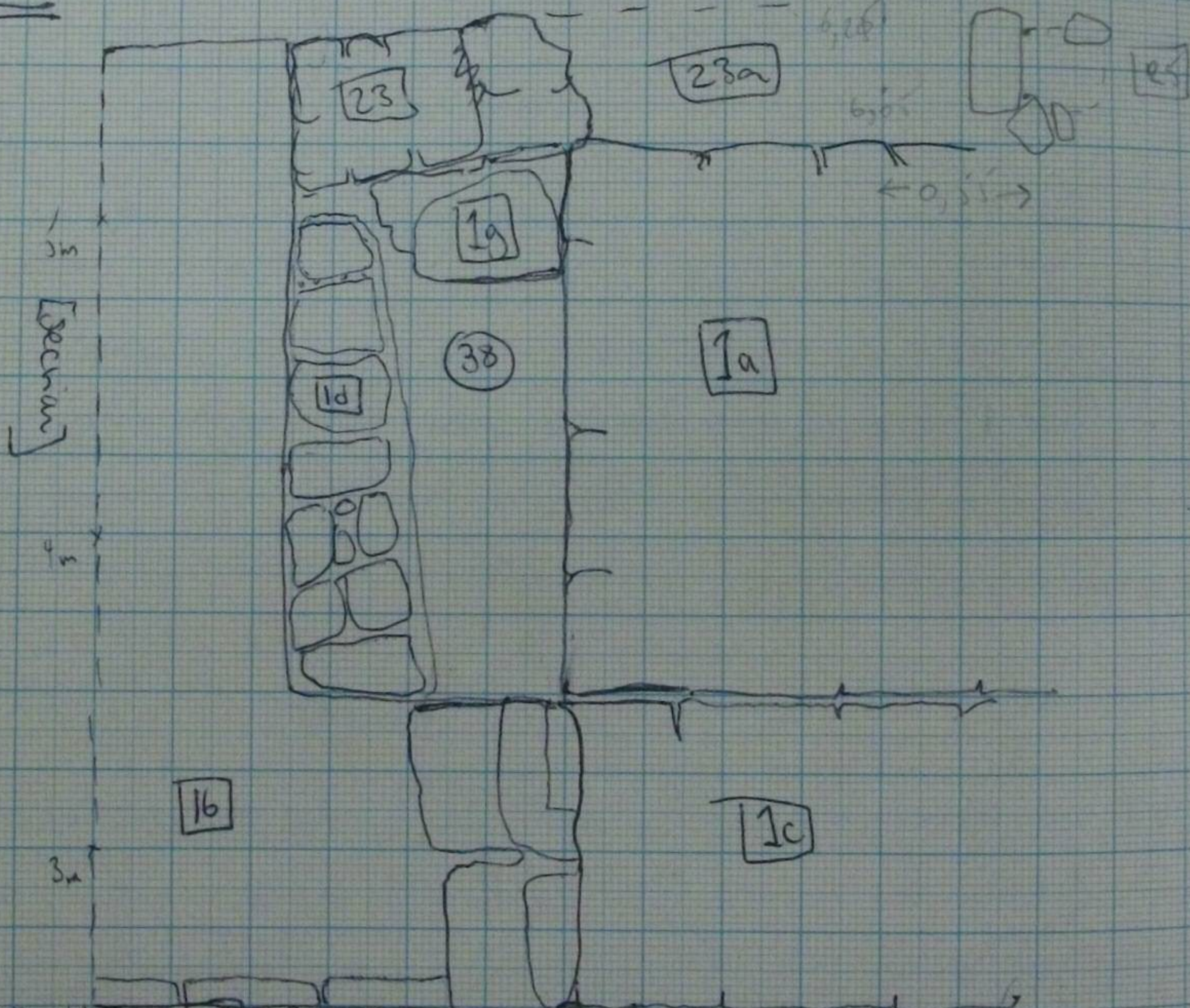
into [17]

[18] a robber trench following [1e], fill: loose mortar + masonry debris

Pit 16



In section



In plan [roughly measured]

N ↑

27.5/52.5

• 19.8.76 / (16) back loam fill at top of [16] (a pit). flecks of plaster
many animal bones. see P1a

• (17) fill of wall [14] see P2b

• 20.8.76 / (18) ^{ashy} back loam below (16) essentially the same but darker see P1a

• (19) light coloured loam, almost sandy with small stones
adjacent to pit [16] see P1a

• (20) yellow, plastic, sandy loam with small stones
in pit [16] and charcoal see P1a

below (18) probably masons chips & bedrock debris i.e. actually the base of [16]

P1a
B70 ✓ (21) brown loam around footings of [1e] ^{i.e. over} ~~over~~ relative [24]
complex.

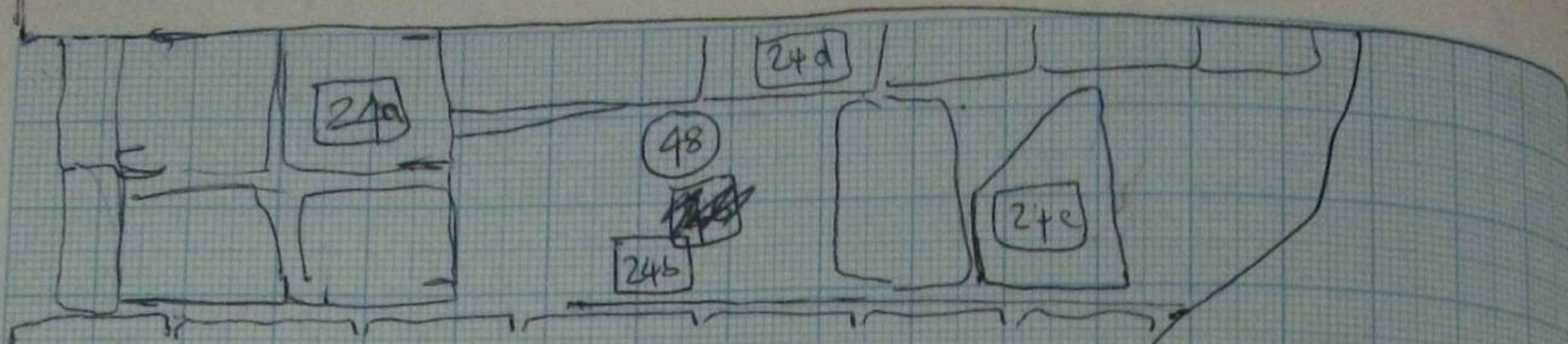
• 21.8.76 (22) redeposited material - a dirty, stony brown loam in [17]
below [14] see P1a

• S1 / (23) clearance [2cm dip] off area north of [1a] i.e. clayey
brown loam grading into darker loam with plaster
underneath [11] see P1a S1

• (24) black loam fill of post hole [19] ~~blocked~~ blocked by
large [15-20 cm] stones P2a

• (25) fill [back loam] of wall [15] see P2a

• ✓ (26) clayey brown loam under wall [15] + under (6) (road)
N of 36/50 = (35) see P1a/b

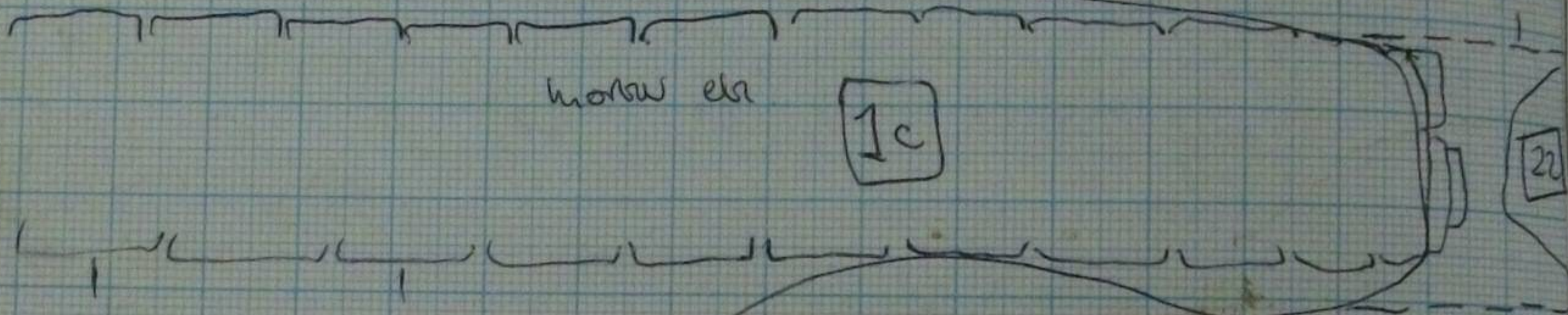


1e

15 → morbu elz

17

brown loam (26)



41

morbu elz

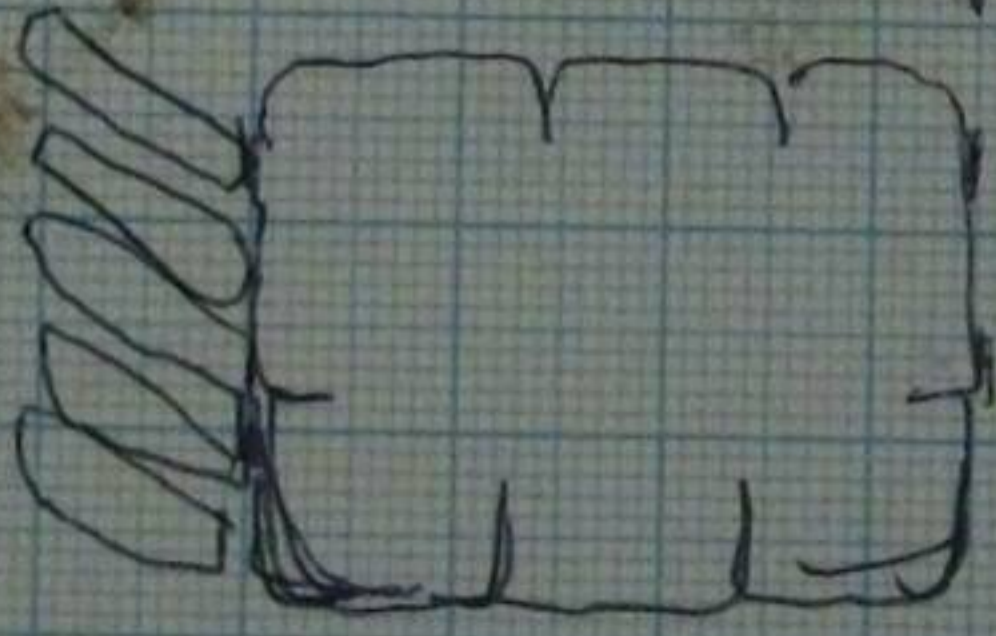
brown clayey stoney loam

1h

~~scribble~~

26

1b



[19] posthole at approx 32/56 see layer (24) = pliers

~~20~~

[20] robber trench at approx. 30/45 adjacent to
S. end of [15] The vertically set stonework.
Some stones survived at the junction of [20] and [16]

~~[20]~~

[21] area of ~~the~~ robbing of the vertically set slabs [16]
fill: (32)

There was a piece of fallen masonry 50cm x 40cm
at approx. 31/51

[22] "black pit" cut into ^{robber} ~~robber~~ trench of wall [1c] on
eastern bank [modern finds - (39)]

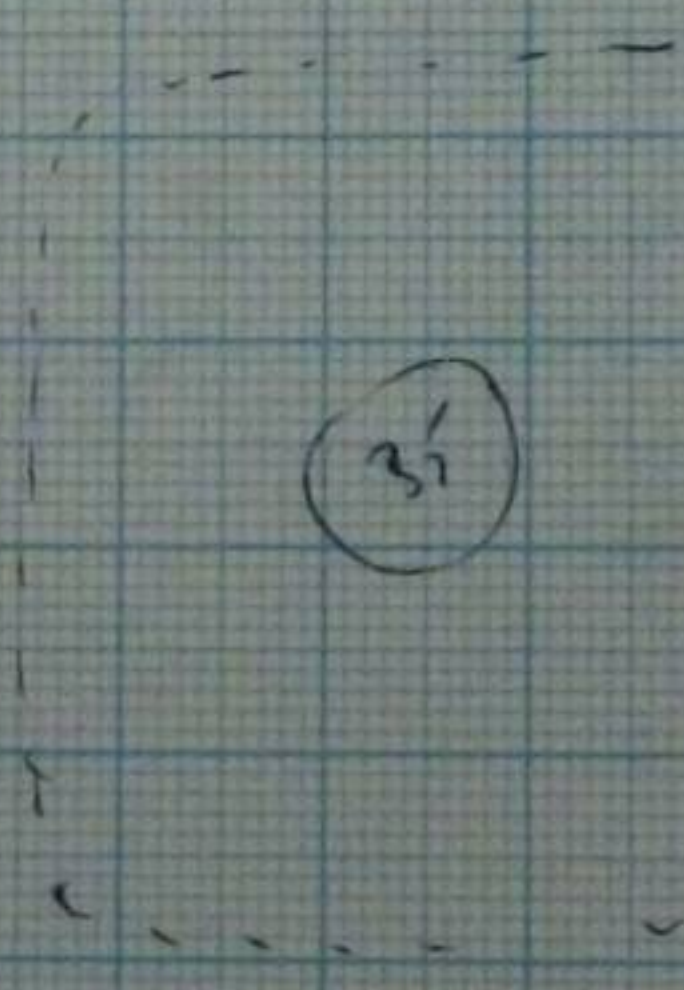
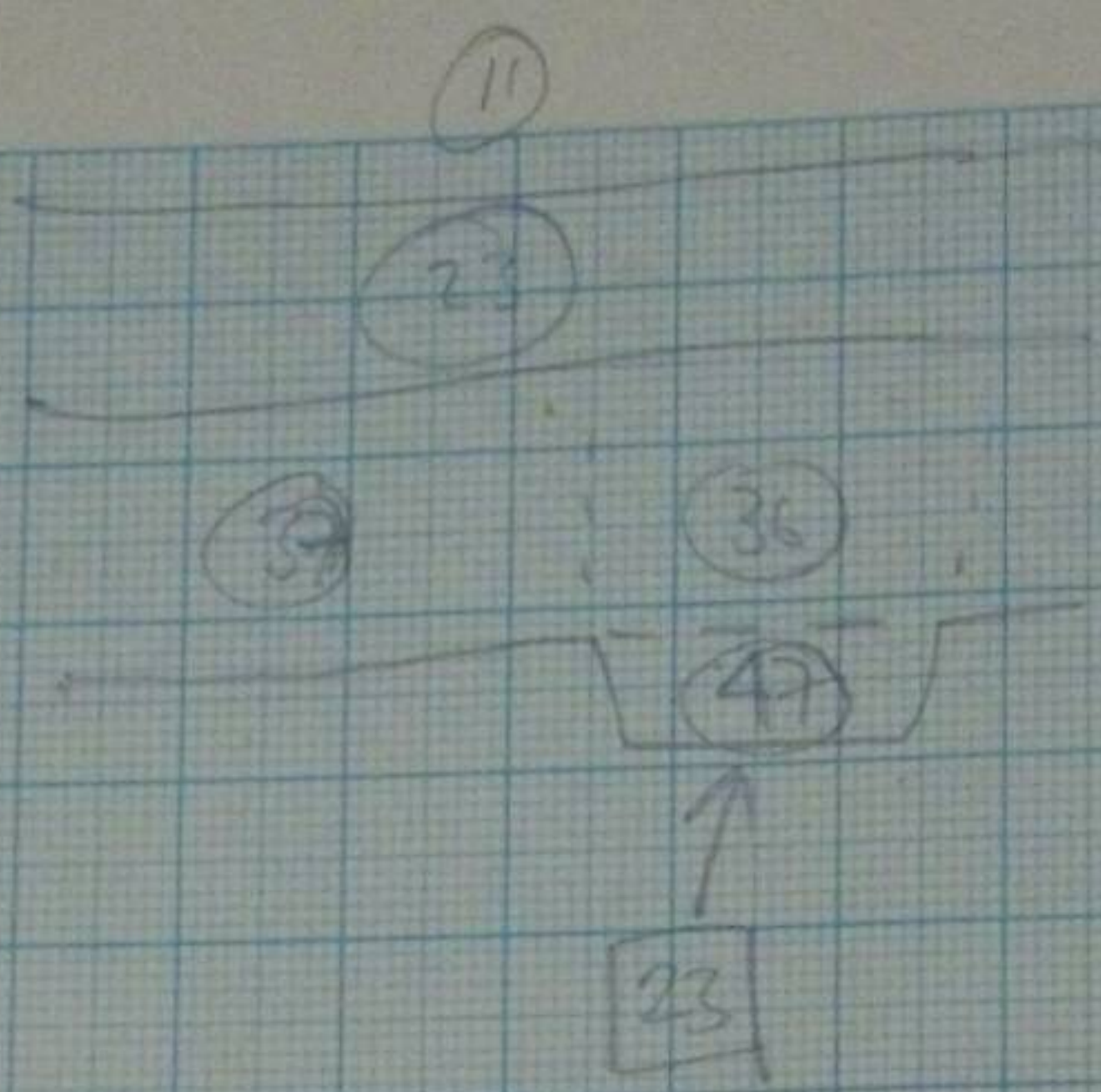
[23] see plan of feature [1]. North of [1a] a wall
off-line with [1a] and its robber trench [23a].

At [23] 78cm high x 12 courses of thin slab masonry.

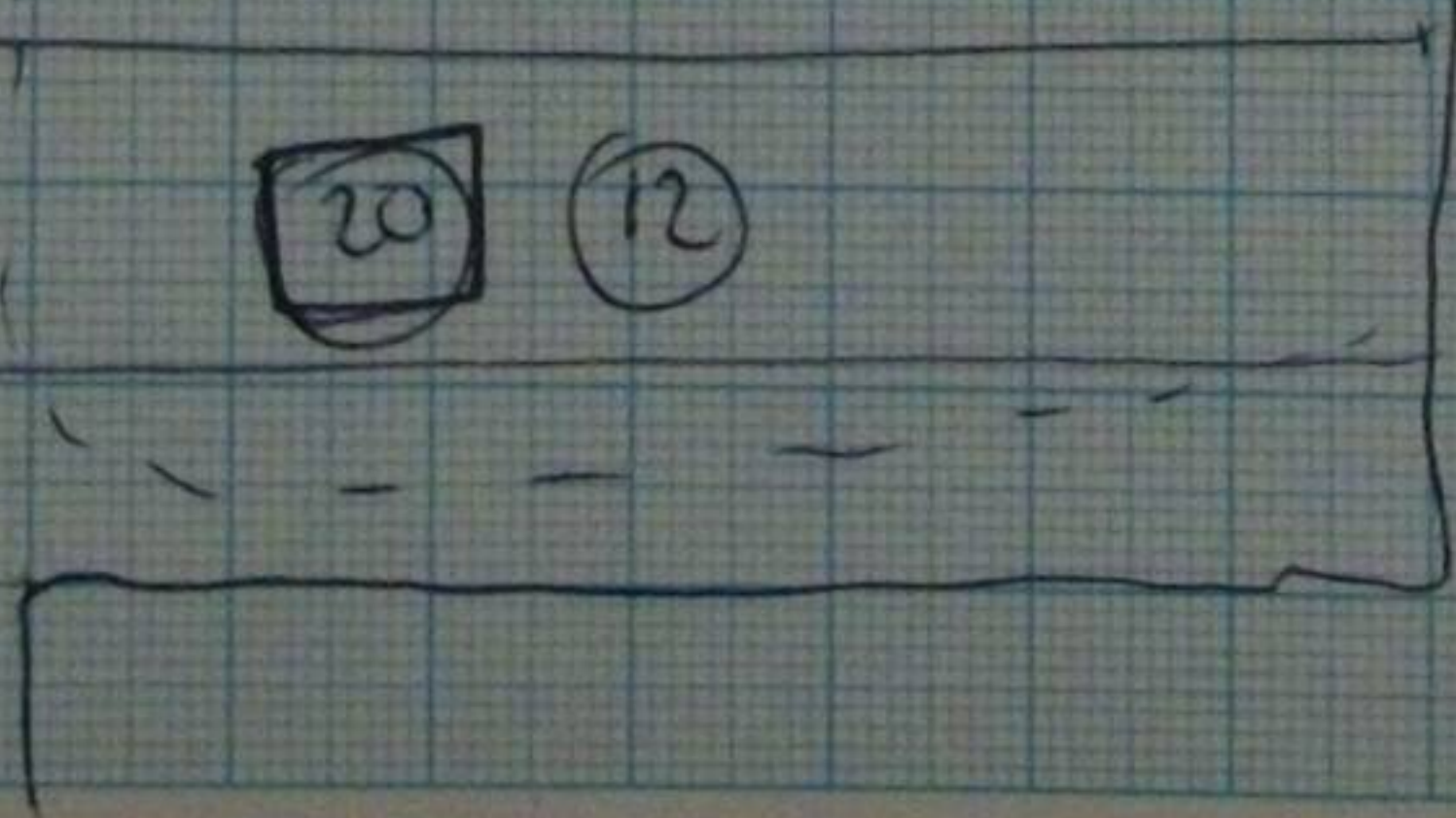
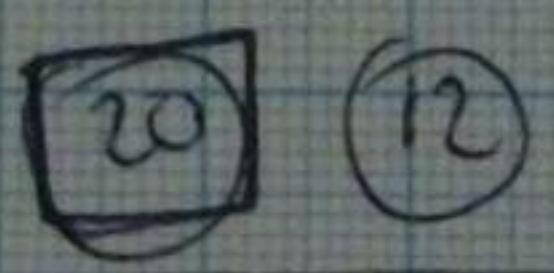
[24a] short piece of clay grouted wall N. of [1e]
deeper footing than 24c x similar to 24d. See below (p. 29)

[25] posthole cut into wall trench of [23]
intentional
it is banded

~~[25]~~



34 → a 2-5 cm dia.



SI (27) stony brown loam below (6) and more or less above the robber trench (20) Southern boundary / S. bank. above (34) in XIV Souda P1b and its line projected to east section

✓ (28) very like (20) with which it may join Yes 23.8.2
ie. see (20)

✓ (29) Gill of p.h. [12]

✓ (30) Gill of p.h. [10]

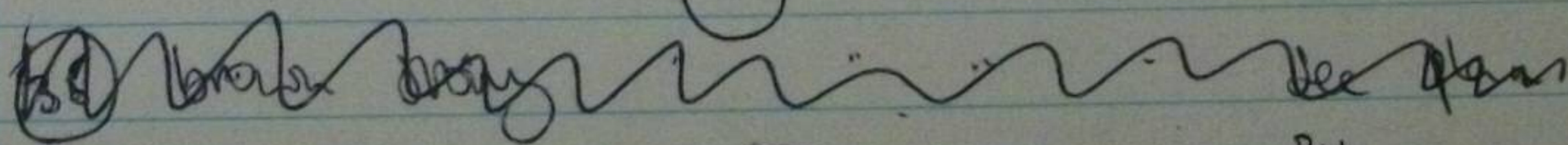
✓ (31) Gill of p.h. [11]

27.8.76 ✓ (32) ash / mortar / small stone cilling [21] P1a

✓ (33) Gill of p.h. [8]

SI ✓ (34) clearance under (6) off [20] i.e. contaminated (12) P1b

✓ (35) brown stony loam on E. margin of trench P1b
=

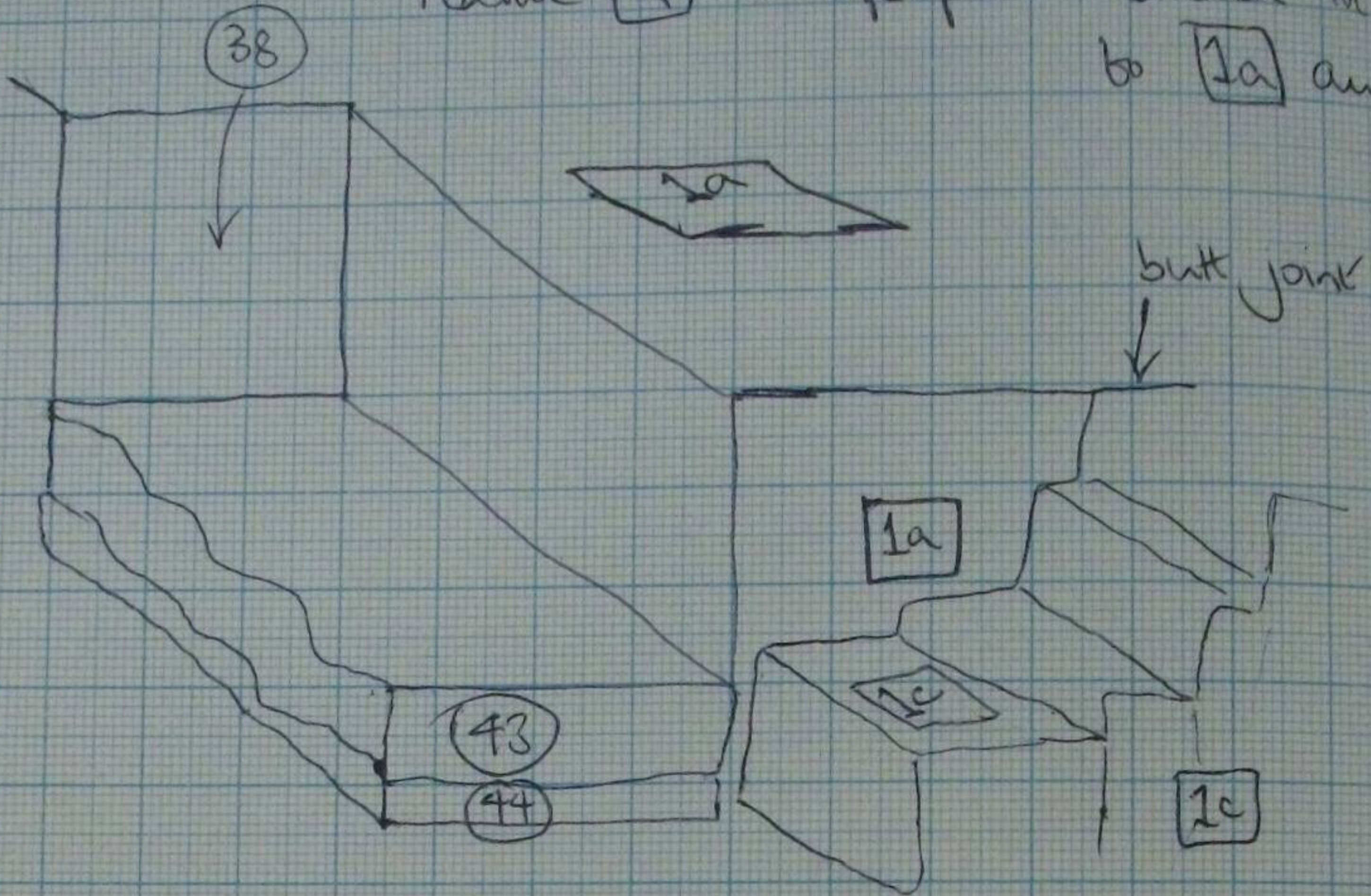
~~(34)~~  See plan

may link up with (26) yes P1b
=

below (23) { (36) orange clayey loam difficult to distinguish but corresponds
(37) darker clayey loam N. of robber P1a to robber trench in fill(?)
trench of [23] = 4 [23] } (36)

✓ (38) see plan of features [1] and [16] : brown stony loam W. of [1a] probably links up with (23) (36) and (37)
P1a

Feature **1f** : perspective sketch in relation
to **1a** and **1c**



39 fill of pit [22]

~~40 top of slabs [1b] is below (5) but its~~
~~equation.~~

40 interface between (38) and redeposited material below (43). 24.8.76 - include Qads with (43)

41 mortar and rubble core of [1c], east of [1b]
in [26] $\frac{P1a}{=}$

42 fill of robber trench of [1c] ~~is~~ between [1c] and [2c]

24.8.76. 43 crudy, very crumbly sandstone looks like redeposited material - but more crumbly & less clay content. loose buff coloured. No. This a layer of S.S chips left by masons. $\frac{P1a}{=}$

44 ~~rough~~ Mortar surface underneath (43) $\frac{P1a}{=}$

45 essentially (41) but actually on top of wall [1c] $\frac{P1a}{=}$

46 brown loam beneath (15) and (26) between [1a], [1e], [1c] and ~~the~~ e. section $\frac{P1a}{=}$

25.8.76

47

orangey / clayey / charcoally fill + bones east
th 23a P1a
=

25

26.8.76

48

brown loam ~~fill~~ 24b

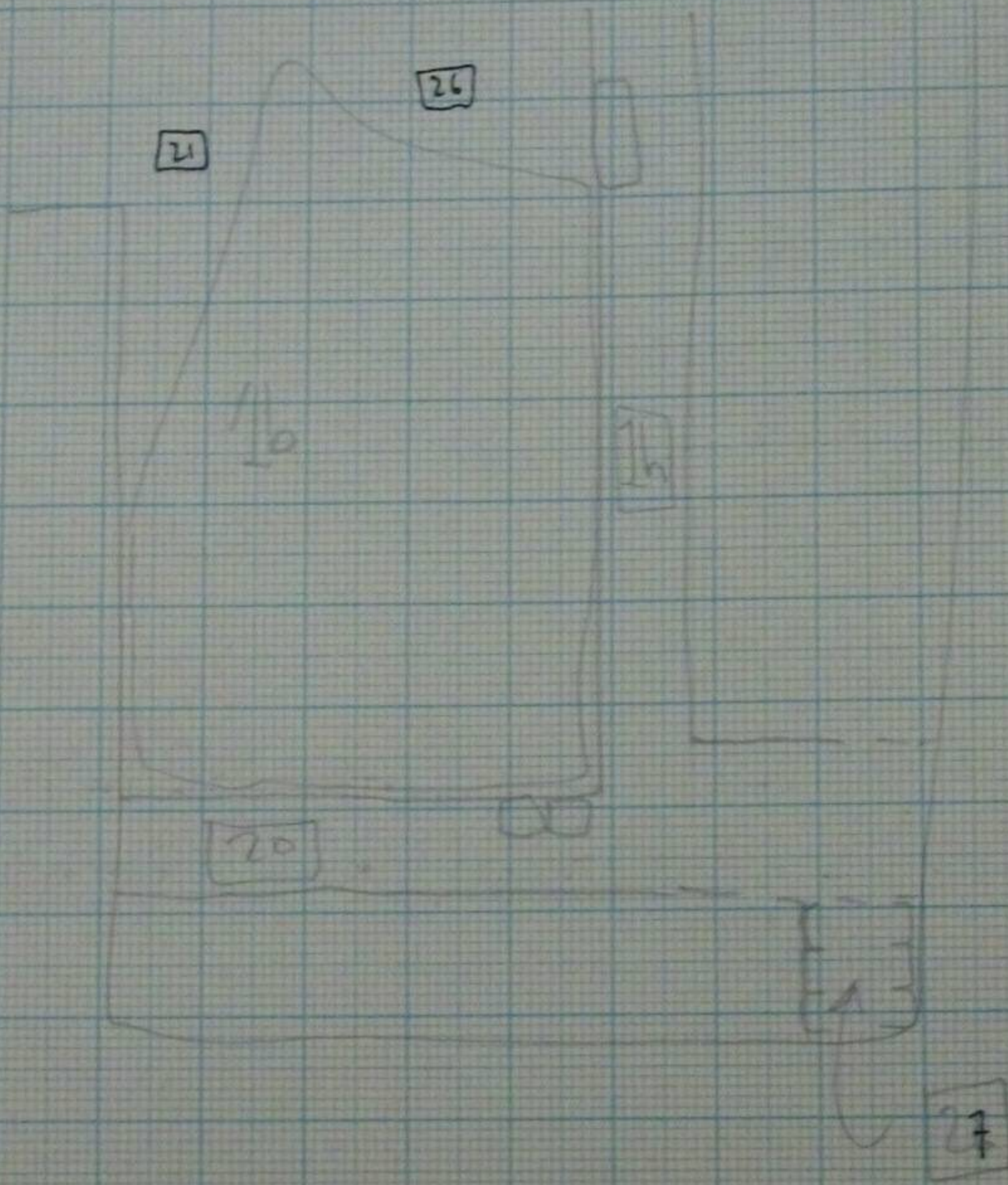
P1a
-

49

yellow sandy material covering 25 . Not possible to state whether it's the

fill of some robbing trench or another feature : Sandbagged to expose 25

Curves excav. under 15 required. S3a



~~24a~~ 24b ? shaft N. of 1e, south of 24d

fill: gray brown loam (48), which changes to a ~~black clayey (argass?) loam.~~ darker loam.

24e Narrow clay grouted wall - 3 courses only.
x banded into 24d.

24d Wall running E.-W. large indressed masonry.
loose soil & air fill on outside but signs of clay grouting
better inside wall. Upper part disturbed by 17 but continuation
N-S. shown in section.

25 clay grouted wall below 1b [see plan of 1]
at approx 28/53

27 Short piece of wall [one course] in the extreme S.E. corner of
the trench. Not directly associated with ~~any~~ open feature. Rough N-S
alignment.

26 area of robbing E. of 1b
fill: 41

28 }
29 } post-holes N. of 23. Manifested themselves as upright slabs grouted
30 } in around hole [no trace of which]

c. 70-80 cm
inside

↑
30 a little doubtful

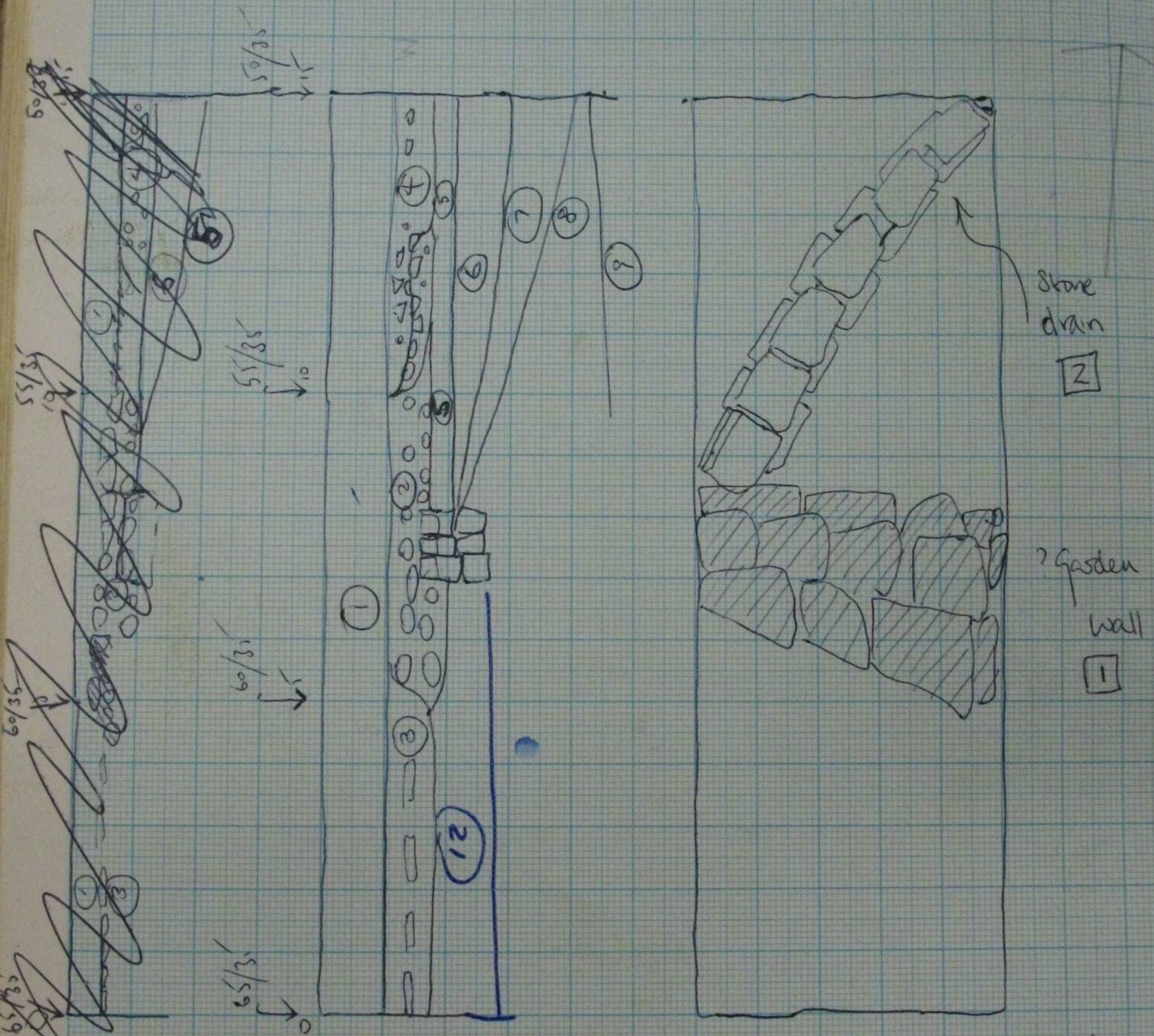
50/35

55/35

Grid location

60/36

65/35



Sketch section

Sketch plan

(exaggerated details)

SITE XV

9.8.76 trial trench 15x1 m laid out

16.8.76

- ① topsoil 10-20 cm depth
- ② large* sandstone rubble spill 6-10 m [on sketch]

* rubble > 20 cm

Covering a ? garden wall [1]

- ③ scatter of stone tile etc in ~~base~~ base of topsoil and below
- ④ plaster/brick/stone rubble lens 11-15 m
- ⑤ indurated ash/stone/brick forming a hard surface

12.8.76

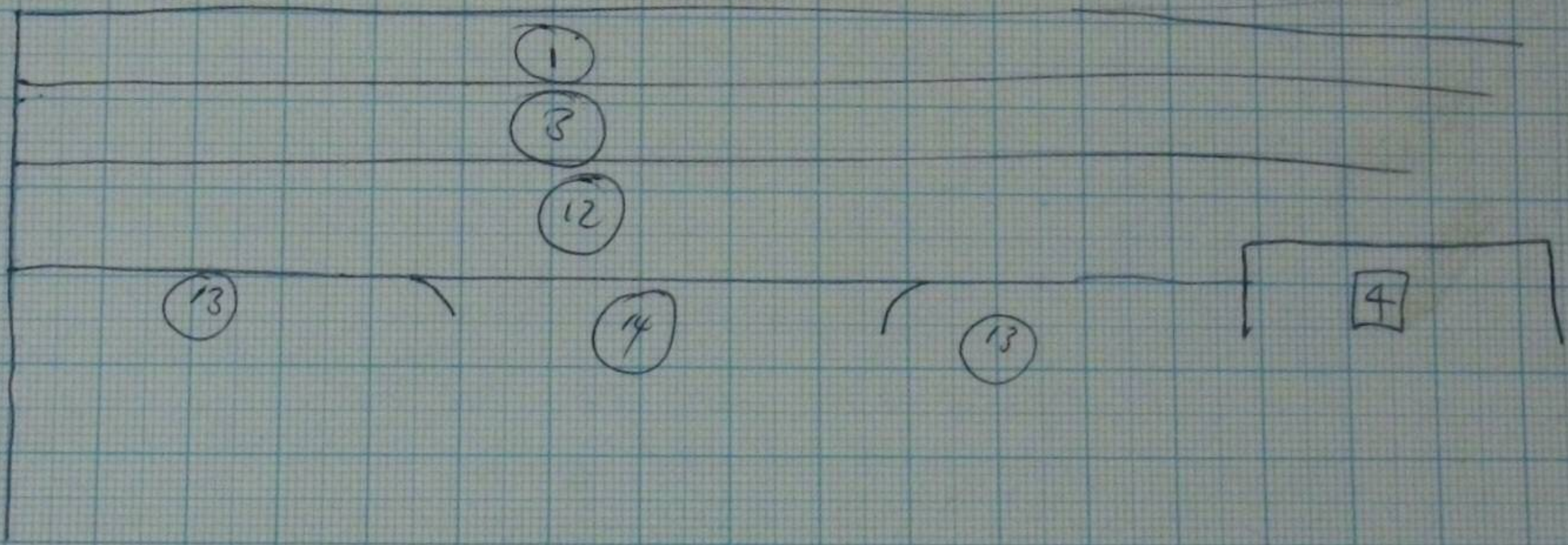
② Stone drain located [11.8.76] running obliquely across the trench, bedded in ⑦ and covered by ⑥

⑥ Rich black loam in a lens starting from the ? garden wall at 7m.

⑦ Brown clayey loam underlying ⑥.

⑧ ash, surfaced. byer

↑ F



13.8.76

⑨ brown loam with charcoal etc under ⑧

⑩ drain Gill ^{black} rich humus

16.8.76

⑪ Ashy Gill in feature ③

17.8.76

⑫ black loam to the east of Manor wall [feature ④]

18.8.76

Further excavation into ⑫.

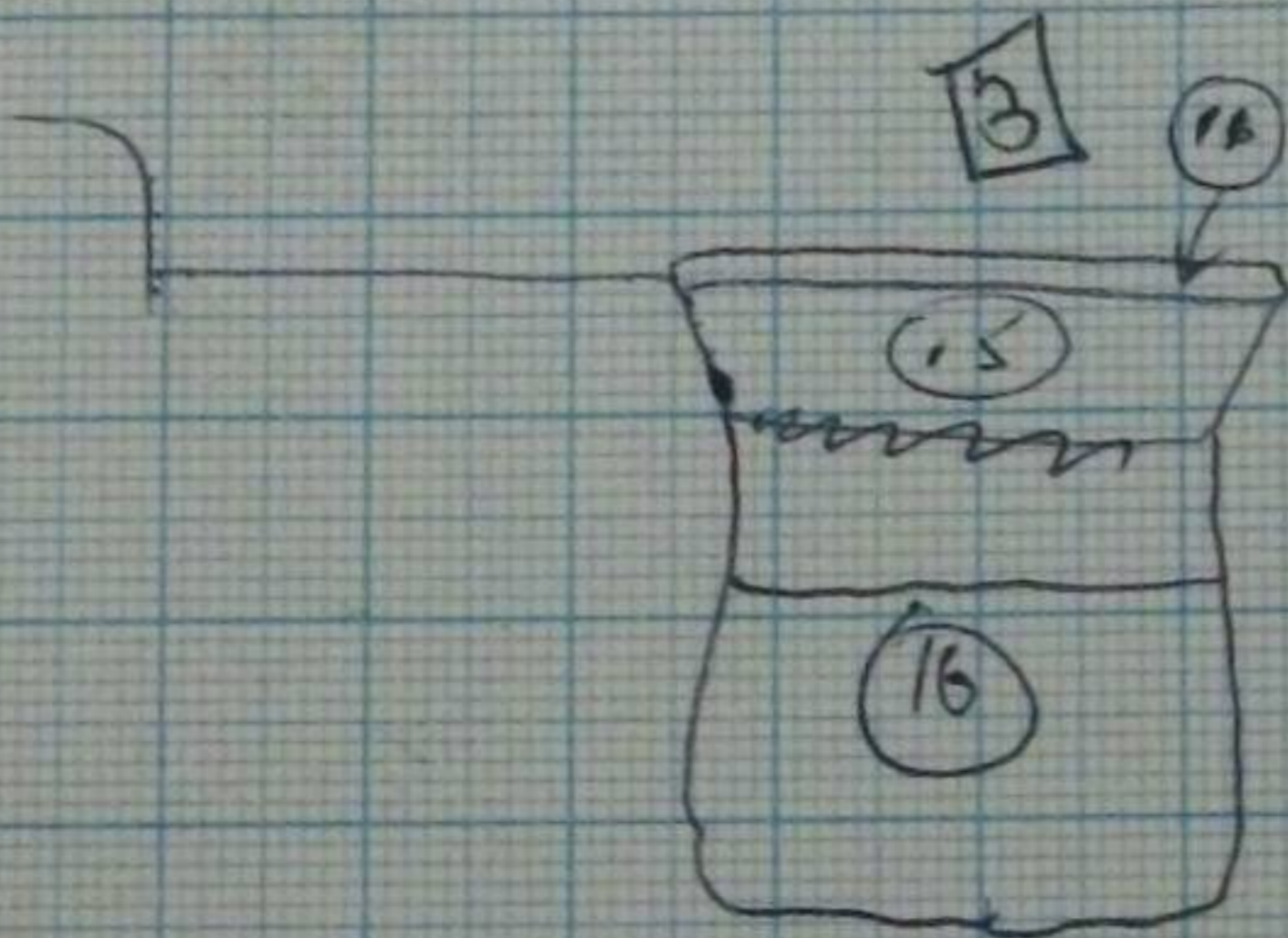
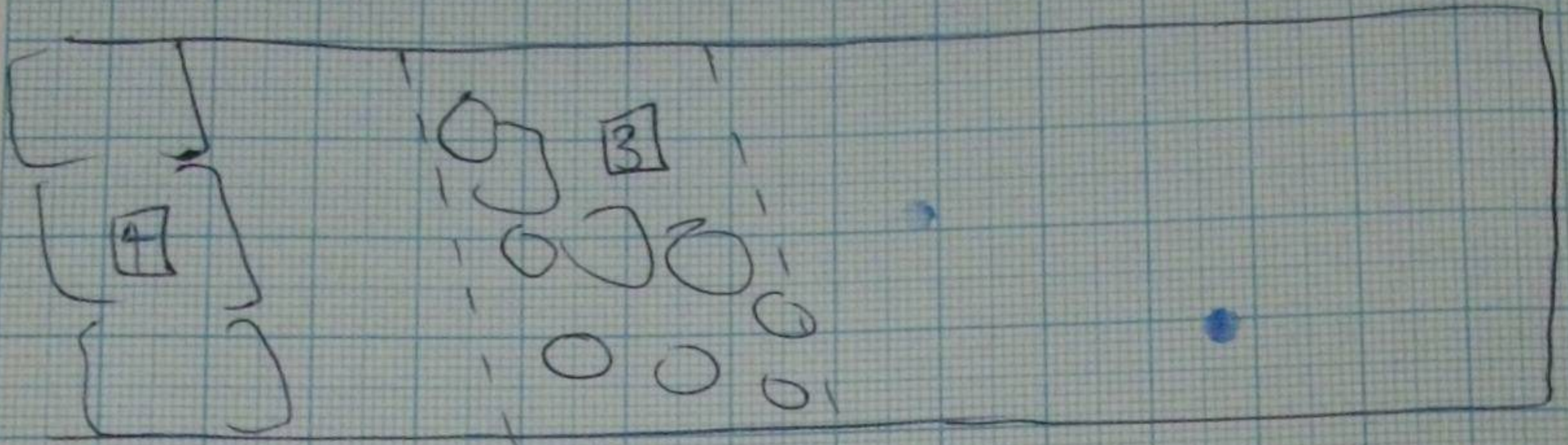
19.8.76

a ? robber trench cuts a brown loam to E of ④ :

⑬ brown loam, stony, few finds

⑭ black loam, with charcoal and large [10-20cm] stones
cuts ⑬ and plaster

? robber trench



Features

see SM 76 P2 for drawings of

[3] ash-filled feature to west of [4]
* large (11)

21.8.76 excavated: appears to be a robber trench parallel to [4] and filled with a spill of rubble [planned etc]

[4] Manor wall

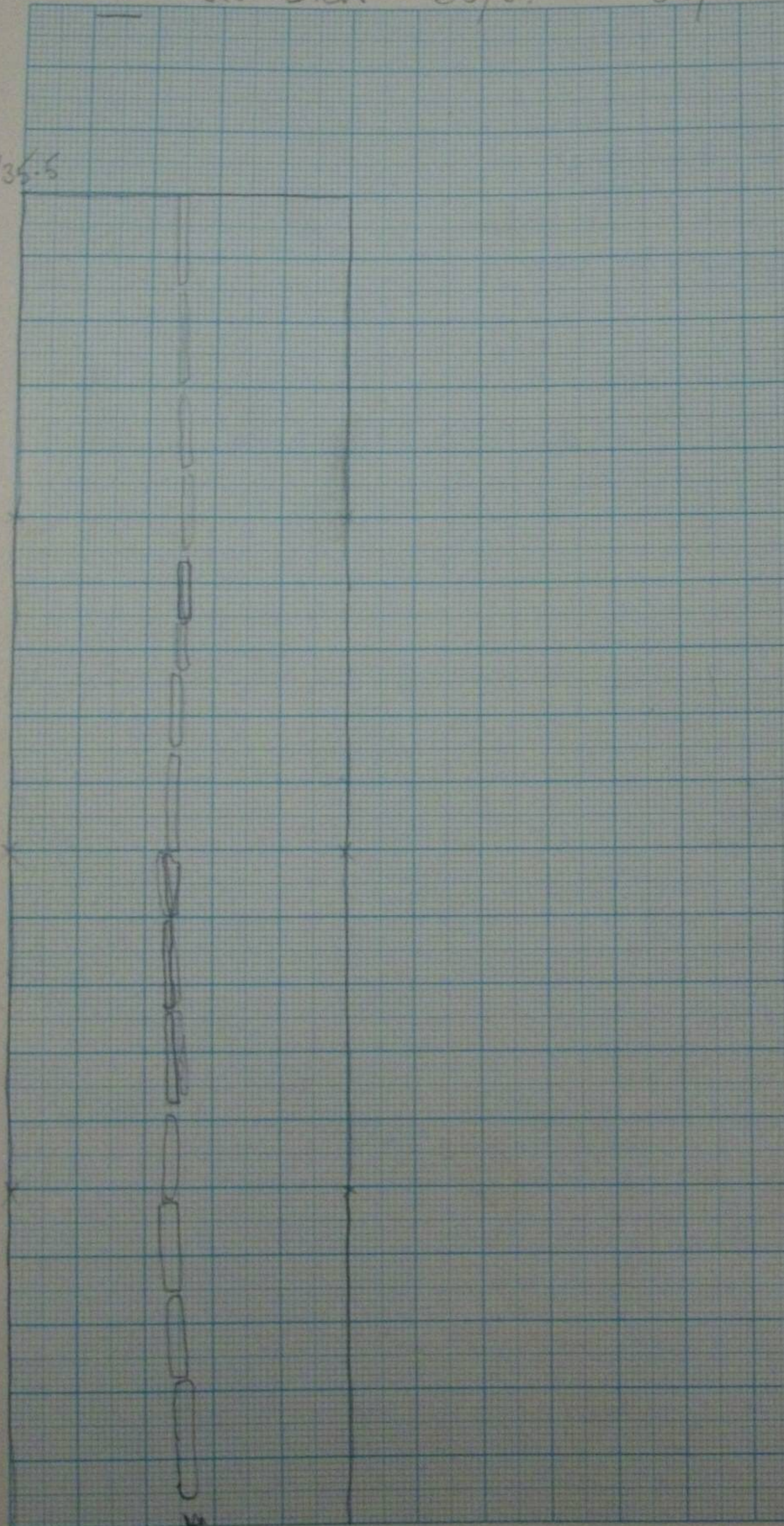
[5] ? robber trench to East of [4]

42

XV extension

65/35 - 69/35

69/35-5



65/35-5

21.8.76

✓ (15) ashier bill of [3]. The same as (11) but (arbitrarily) lower in the buyer. Contains coal.

↓ (75) below (15)

\leftarrow SD	SD'			
0.81	0.90	SD'	5 cm lower	} mean 6 cm
0.80	0.87 0.87	SD'	7 cm lower	

~~sum~~

Site datum [SD] - on the SE corner of the Kurrek house
 SD' - temp. datum on site at 21.6/33.5 [wall top]
 SD' = -6 cm SD [to correct, ~~add~~ subtract 6 cm from SD' figures]

3.86	3.86	3.62	3.46
2.98	1.69	1.66	1.53
1.68	<hr/> 2.17	<hr/> 1.96	<hr/> 2.33

SD'

	3,67 m
	1,90 m
+	<hr/> 1,57 m

Corrected against SD

LEVELS

Corrected against SD	SD'	3.62		corrected against SD'		
+ 2.11			1.41	+ 2.17 m	2.11	top of drain
+ 1.79			1.77	+ 1.85 m	1.79	bottom
+ 1.90			1.66	+ 1.96 m	1.90	masonry
+ 2.41			1.15	+ 2.47 m	2.41	gdn wall large block
+ 2.19			1.37	+ 2.25 m	2.19	E. end of drain
+ 2.15			1.41	+ 2.21 m	2.15	mid. course
+ 2.33			1.23	+ 2.39 m	2.33	W. end of drain

in XIV
see plan P3
in XV
see
P2

18 m section :

SD'	3.86	2.16	
		2.76	①
		2.16	②
		2.162	③
		2.15	④
			⑤

2.18	1.69	masonry
1.69	2.17	top of dr.
2.04	1.82	bottom of dr

20.8.76	XIV E. extension [P2]	SD' =	3.64 m
reading	corr. against SD'	against SD	localia reading
+ 1.86		+ 1.80 m	PH 1 top 1.78
+ 1.69		+ 1.63 m	bottom 1.95
+ 1.85		+ 1.79 m	PH 2 top 1.79
+ 1.62		+ 1.56 m	bottom 2.02
+ 1.90		+ 1.84 m	PH 3 top 1.74
+ 1.71		+ 1.65 m	bottom 1.93

Checked off

SD'	SD				
+ 1.90	+ 1.84 m	PH 4	top	1.74	1.74
+ 1.71	+ 1.65 m		bottom	1.93	1.93
+ 1.90	+ 1.84 m	PH 5	top	1.77	1.77
+ 1.66	+ 1.60 m		bot.	1.98	1.98
+ 1.86	+ 1.80 m	PH 6	top	1.78	1.78
+ 1.74	+ 1.68 m		bot.	1.90	1.90
+ 1.94	+ 1.88 m	PH 7	top	1.70	1.70
+ 1.65	+ 1.59 m		bot	1.99	1.99
+ 2.19	+ 2.13 m	[14]	top 14'	[see plans B3/B7]	
+ 2.37	+ 2.31 m	[15]	top	1.27	1.27

Trench XV SD' = 3.6m

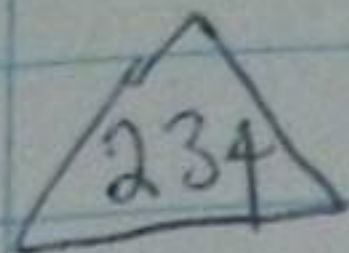
linear feature in extension top at 65/36 1.80

boxes in [3] 1.80 m

3209 3.58
 1.80
 + 1.78 = 59

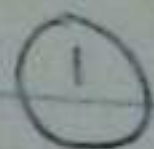
69

SMALL FINDS.

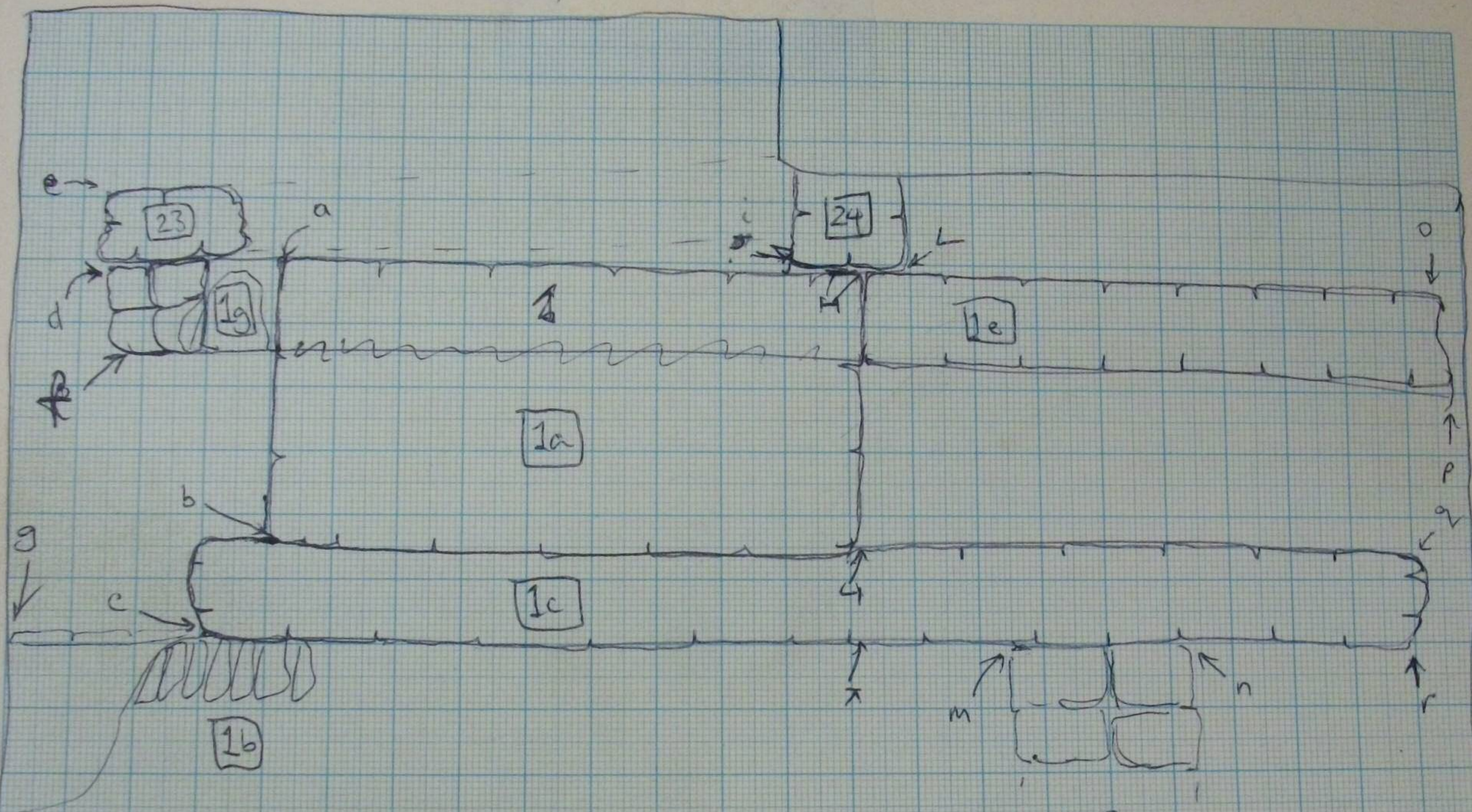


XIV

9.8.76

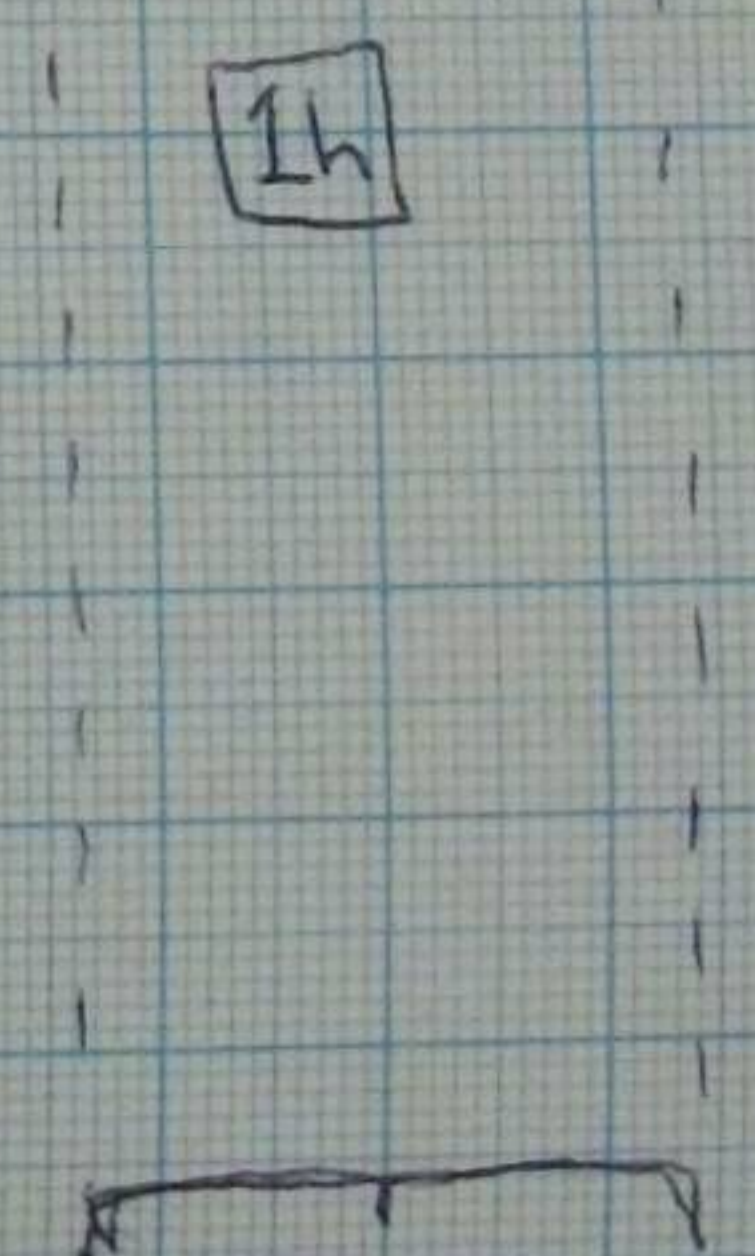


Newemburg letter of Hans Schurkes.



$bj = 1,19m \quad 1,82m$
 $ab = 2,16m \quad 1,82$
 $po = 80cm \quad \frac{1}{2}$
 $qr = 64m$
 $bc = 64m \quad 64$

$df = 35cm$
 $ed = 50cm$
 $il = 1,13m \quad \text{boskup}$
 $mn = 64$



Main Plan - P1

Δngulations.

<u>point</u>	30/50	30/58.5	30/50
a			
b		2,91	8,31
c	7,26	4,7	7,26
d		5,32	6,63
e		3,40	8,92
f		2,90	9,15
g		3,57	8,50
h		5,75	7,95
i	5,86		6,53
j	5,96		6,29
k	4,28		4,82
l	3,60		4,47
m	6,23	4,05	
n	4,35	6,29	
o	4,81	6,65	
p	7,15	5,45	
q	6,28	5,65	
r	6,12	6,97	
s	5,79	7,45	
t			
u			
v			
w			
x			
y			
z			

Levels

$SD' = 3.62m$

ie. $SD = 3.56$

point :

Reading :

corrected (SD') :

corrected (SD) :

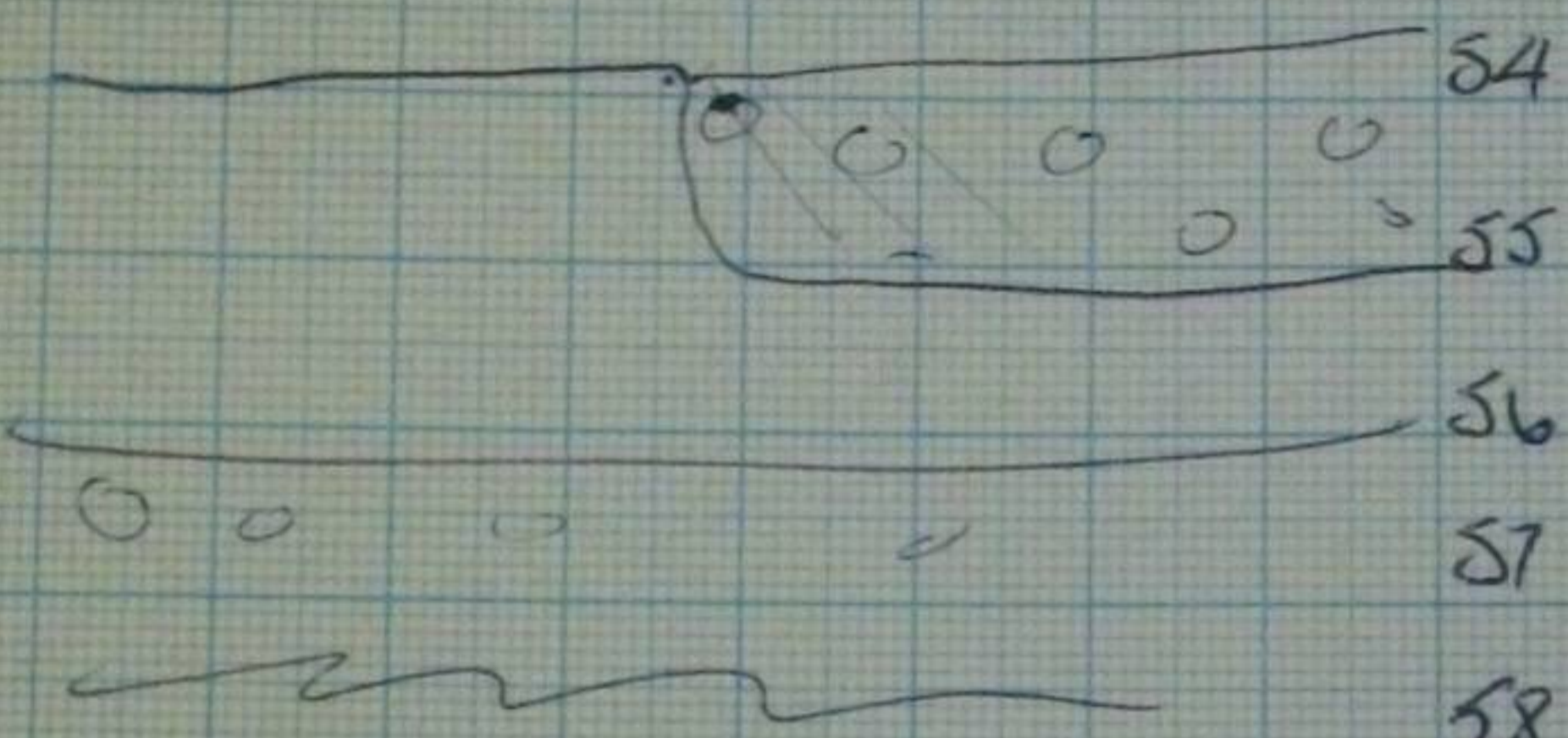
point	Reading	corrected (SD')	corrected (SD)
1	2.76	0.80	0.80
2	2.02	1.60	1.64
3	2.11	1.51	1.45
4	2.04	1.58	1.52
5	2.67	0.95	0.89
6	2.32	1.30	1.24
7	2.18		1.38
8	2.17		1.39
9	2.54		1.02
10	2.28		1.28
11	2.55		1.04
12	2.36		1.20
13	1.83		1.73
14	2.09		1.47
15	2.04		1.52
16	2.60		0.96
17	2.62		0.94
18	2.09		1.47
19	2.01		1.55
20	2.01		1.55
21	1.97		1.59
22	2.82 2.75		0.81
23	2.83		0.73
24	2.72		0.84

Point		Corrected against SD
25	2.54	1.02
26	2.71	0.81
27	1.96	1.60
28	2.44	1.12
29	2.23	1.33
30	2.03	1.53
31	2.12	1.44
32	1.96	1.60
33	2.03	1.53
34	1.83	1.73
35	1.93	1.63
36	1.87	1.69
37	1.94	1.62
38	1.93	1.63
39	1.86	1.70
40	1.90	1.66
41	1.91	1.65
42	1.99	1.57
43	2.16	1.70
44	1.92	1.64
45	1.70	1.86
46	2.21	1.31
47	2.36	1.20
48	1.88	1.68
49	2.87	0.69
50	2.64	0.92

24
↓

Corrected
SD

51	3.02	0.54
52		
53		
54		
55		
56		
57		
58		
59		
60		



Fish's dalam 1.60
1.63

1.62 mean

SD' = 3.62
1.62

+ 2.00 SD'

= 1.94 SD