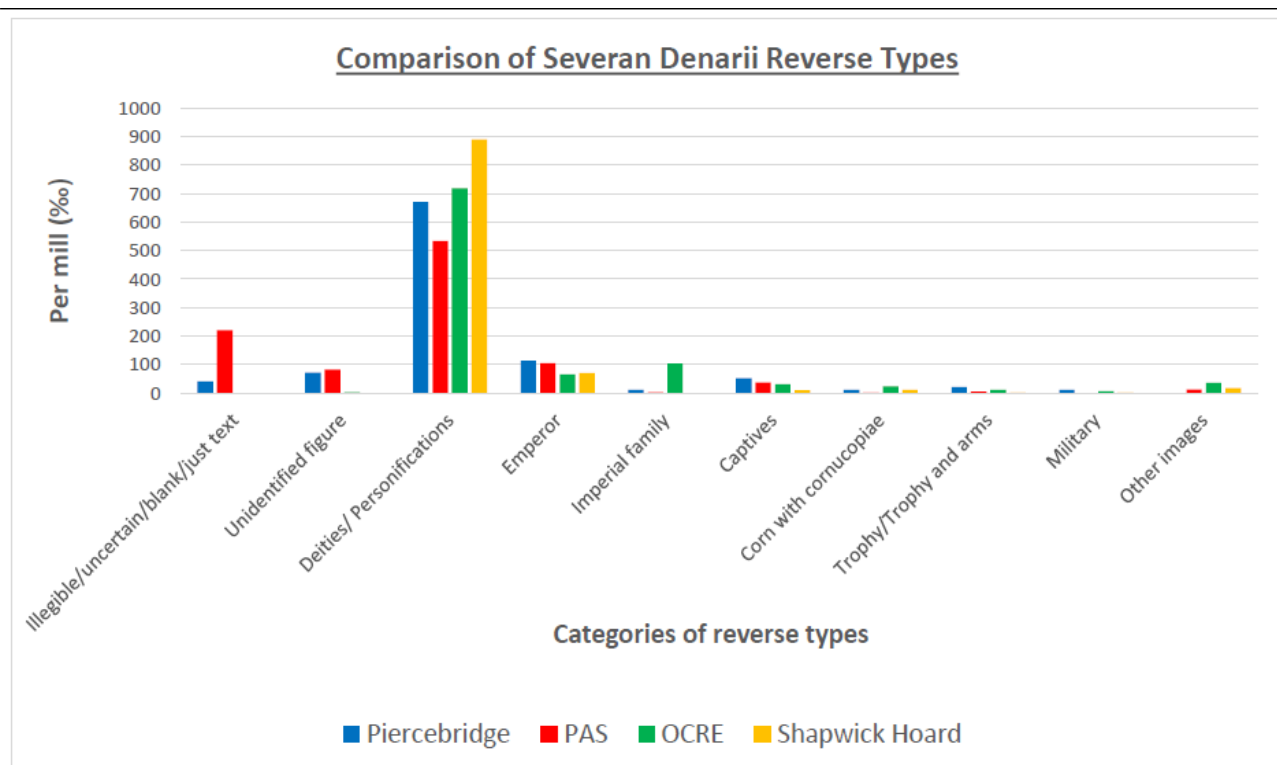


## Comparison of Severan Denarii from Piercebridge with Other Coin Collections

### Overview

- Overall, there appears to be little evidence for reverse type selection based on different image types (deities, emperor, military imagery etc.).
- Reverse types showing the emperor and captives appear to be slightly more common at Piercebridge than in the comparison collections
- Deities and Personifications make up the largest group of reverse types
- The Piercebridge data doesn't show any trends different from those in the compared collections

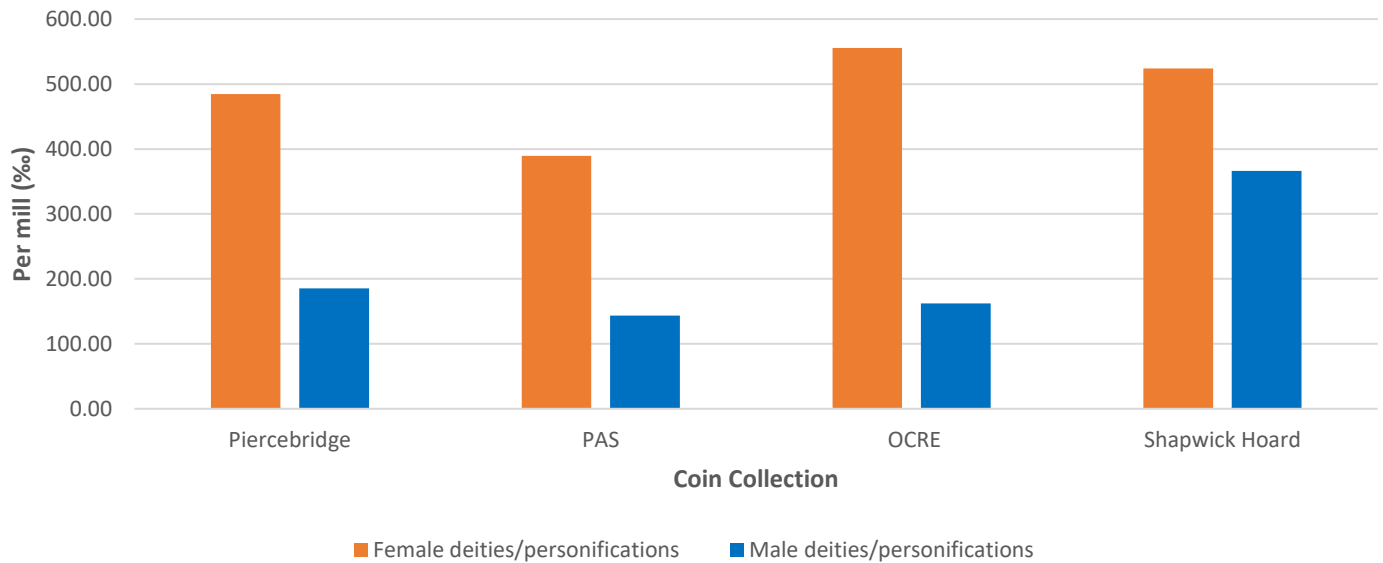
Reverse type	Number from Pierce-bridge	Per mill (‰) from Pierce-bridge	Number from PAS	Per mill (‰) from PAS	Number from OCRE	Per mill (‰) from OCRE	Number from Shapwick	Per mill (‰) from Shapwick
Illegible/uncertain /blank/just text	4	41	353	220	0	0	0	0
Unidentified figure	7	72	133	83	3	3	0	0
Deities/ Personifications	65	670	854	533	761	718	1330	890
Emperor	11	113	168	105	70	66	106	71
Imperial family	1	10	5	3	111	105	0	0
Captives	5	52	59	37	33	31	14	9
Corn with cornucopiae	1	10	3	2	25	24	1	11
Trophy/Trophy and arms	2	21	7	4	12	11	1	1
Military (Eagle and Standards)	1	10	0	0	7	7	17	1
Other images	0	0	20	12	38	36	25	17
<b>Total</b>	<b>97</b>	<b>1000</b>	<b>1602</b>	<b>1000</b>	<b>1060</b>	<b>1000</b>	<b>1494</b>	<b>1000</b>



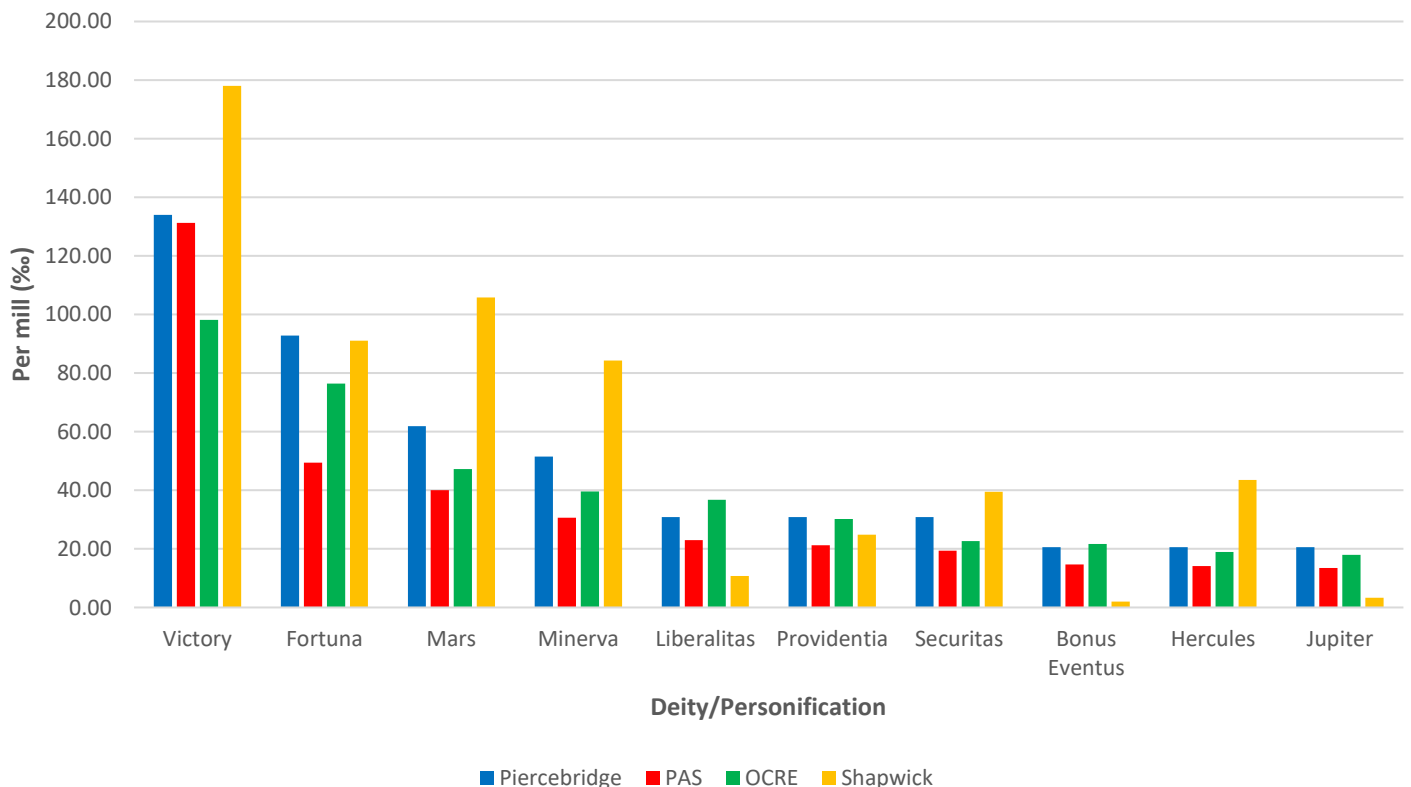
## Deities

Gender of deity / personification	Number from Pierce-bridge	Per mill (‰) from Pierce-bridge	Number from PAS	Per mill (‰) from PAS	Number from OCRE	Per mill (‰) from OCRE	Number from Shapwick	Per mill (‰) from Shapwick
Female deities/personifications	47	485	624	390	589	556	783	524
Male deities/personifications	18	186	230	144	172	162	547	366
<b>Total</b>	<b>65</b>	<b>670</b>	<b>854</b>	<b>533</b>	<b>761</b>	<b>718</b>	<b>1330</b>	<b>890</b>

### Gender of the deities depicted on Severan Denarii



### Most common deities from Severan denarii



Deity / personification	Number from Pierce-bridge	Per mill (‰) from Pierce-bridge	Number from PAS	Per mill (‰) from PAS	Number from OCRE	Per mill (‰) from OCRE	Number from Shapwick	Per mill (‰) from Shapwick
Victory	13	134	223	131	104	98	266	178
Fortuna	9	93	84	49	81	76	136	91
Mars	6	62	68	40	50	47	158	106
Minerva	5	52	52	31	42	40	126	84
Liberalitas	3	31	39	23	39	37	16	11
Providentia	3	31	36	21	32	30	37	25
Securitas	3	31	33	19	24	23	59	40
Bonus Eventus	2	21	25	15	23	22	3	2
Hercules	2	21	24	14	20	19	65	44
Jupiter	2	21	23	14	19	18	5	3
Moneta	2	21	22	13	18	17	5	3
Roma	2	21	20	12	18	17	0	0
Salus	2	21	19	11	17	16	23	15
Virtus	2	21	19	11	14	13	10	7
Bacchus or Liber	2	21	19	11	12	11	30	20
Annona	1	10	17	10	11	10	80	54
Apollo	1	10	16	9	11	10	13	9
Aequitas	1	10	14	8	10	9	1	1
Concordia	1	10	8	5	8	8	1	1
Genius	1	10	8	5	8	8	69	46
Pax	1	10	7	4	5	5	142	95
The Dea Caelestis	1	10	6	4	4	4	0	0
Sol	0	0	21	12	17	16	60	40
Felicitas	0	0	8	5	27	26	0	0
Hilaritas	0	0	8	5	6	6	1	1
Neptune	0	0	5	3	5	5	0	0
spes	0	0	5	3	28	26	2	1
Pietas	0	0	4	2	12	11	0	0
Ceres	0	0	3	2	11	10	1	1
Cybele	0	0	3	2	0	0	0	0
Equity	0	0	3	2	0	0	0	0
Unknown deity	0	0	3	2	2	2	0	0
Venus	0	0	2	1	18	17	0	0
Africa	0	0	1	1	4	4	0	0
Athena	0	0	1	1	0	0	0	0
Fides	0	0	1	1	13	12	4	3
Indulgentia	0	0	1	1	2	2	16	11
Justitia	0	0	1	1	4	4	0	0
laetitia	0	0	1	1	4	4	0	0
Pudicitia	0	0	1	1	4	4	0	0
Juno	0	0	0	0	6	6	0	0
Vesta	0	0	0	0	7	7	0	0
Diana	0	0	0	0	3	3	0	0
Italia	0	0	0	0	2	2	0	0
Isis	0	0	0	0	2	2	0	0
Fecunditas	0	0	0	0	2	2	0	0
The 4 Seasons	0	0	0	0	2	2	0	0
Clementia	0	0	0	0	1	1	0	0
Saeculum Frugiferum	0	0	0	0	1	1	1	1
Nobilitas	0	0	0	0	1	1	0	0
Terra	0	0	0	0	1	1	0	0

Castor	0	0	0	0	1	1	0	0
Asclepius	0	0	0	0	1	1	0	0
<b>Total</b>	<b>65</b>	<b>670</b>	<b>854</b>	<b>503</b>	<b>761</b>	<b>718</b>	<b>1330</b>	<b>890</b>

### Emperor and Imperial Family

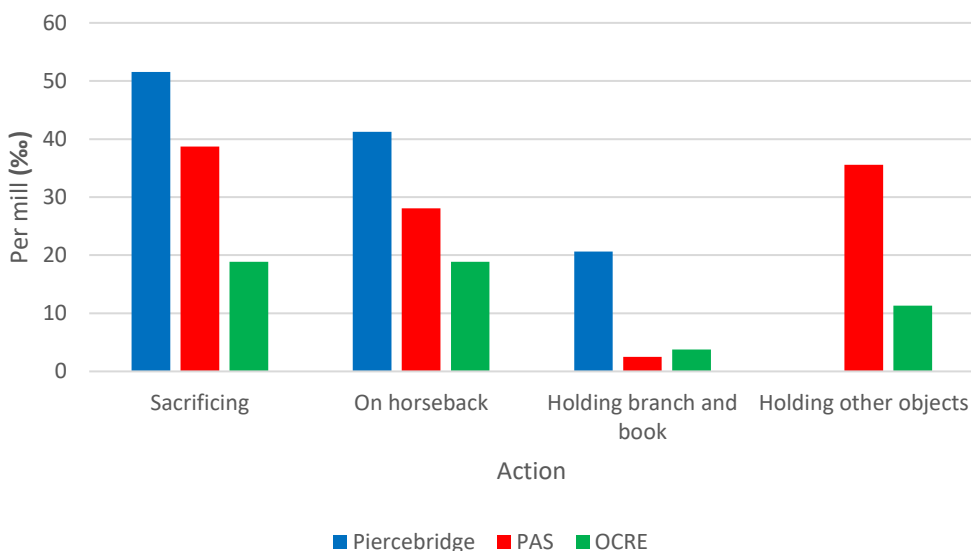
- Piercebridge has slightly more images with the emperor on than the other coin collections with the most popular pose being the emperor sacrificing.

Action of emperor	Number from Pierce-bridge	Per mill (‰) from Pierce-bridge	Number from PAS	Per mill (‰) from PAS	Number from OCRE	Per mill (‰) from OCRE	Number from Shapwick	Per mill (‰) from Shapwick
Sacrificing	5	52	62	39	20	19	0	0
On horseback	4	41	45	28	20	19	69	46
Holding branch and book	2	21	4	2	4	4	0	0
Holding other objects	0	0	57	36	12	11	0	0
<b>Total</b>	<b>11</b>	<b>113</b>	<b>168</b>	<b>105</b>	<b>56</b>	<b>53</b>	<b>69</b>	<b>46</b>

Identified or unidentified?	Number from Pierce-bridge	Per mill (‰) from Pierce-bridge	Number from PAS	Per mill (‰) from PAS	Number from OCRE	Per mill (‰) from OCRE	Number from Shapwick	Per mill (‰) from Shapwick
Unidentified	4	41	70	44	5	5	0	0
Identified as Severus	7	72	98	61	65	61	106	71
<b>Total</b>	<b>11</b>	<b>113</b>	<b>168</b>	<b>105</b>	<b>70</b>	<b>66</b>	<b>106</b>	<b>71</b>

Imperial family members	Number from Pierce-bridge	Per mill (‰) from Pierce-bridge	Number from PAS	Per mill (‰) from PAS	Number from OCRE	Per mill (‰) from OCRE	Number from Shapwick	Per mill (‰) from Shapwick
Julia Domna	1	10	0	0	16	15	0	0
Geta	0	0	3	2	55	52	0	0
Caracalla	0	0	2	1	87	82	0	0
Plautilla	0	0	0	0	1	1	0	0
<b>Total</b>	<b>1</b>	<b>10</b>	<b>5</b>	<b>3</b>	<b>159</b>	<b>150</b>	<b>0</b>	<b>0</b>

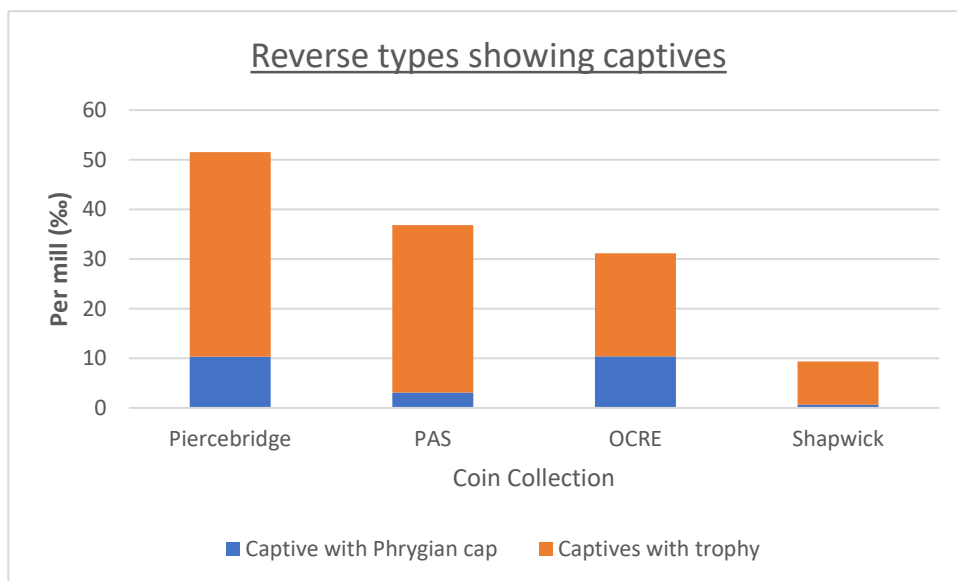
### Actions of emperor on reverse



## Captives

- Piercebridge has slightly more captive reverse types than the other coin collections
- The most popular pose is captives with trophies.

Description of captives	Number from Pierce-bridge	Per mill (‰) from Pierce-bridge	Number from PAS	Per mill (‰) from PAS	Number from OCRE	Per mill (‰) from OCRE	Number from Shapwick	Per mill (‰) from Shapwick
Captive with Phrygian cap	1	10	5	3	11	10	1	1
Captives with trophy	4	41	54	34	22	21	13	9
<b>Total</b>	<b>5</b>	<b>52</b>	<b>59</b>	<b>37</b>	<b>33</b>	<b>31</b>	<b>14</b>	<b>9</b>



## Actions and Objects

- There appears to be no reverse type selection based on the actions of the person depicted on the coin
- The most popular objects are spears, cornucopias, trophies, and wreaths and palms. Piercebridge has more trophies and wreaths and palms than the other coin collections.

Actions	Number from Pierce-bridge	Per mill (‰) from Pierce-bridge	Number from PAS	Per mill (‰) from PAS	Number from OCRE	Per mill (‰) from OCRE	Number from Shapwick	Per mill (‰) from Shapwick
Sacrificing over altar	6	62	96	60	76	72	0	0
Figure standing with object	4	41	686	428	479	452	0	0
On horseback	4	41	48	30	38	36	69	46
Seated	15	155	213	133	222	209	147	98
Standing (only if described)	9	93	559	349	58	55	717	480
<b>Total</b>	<b>38</b>	<b>392</b>	<b>1602</b>	<b>1000</b>	<b>873</b>	<b>824</b>	<b>933</b>	<b>624</b>

Objects holding/with	Number from Pierce-bridge	Per mill (‰) from Pierce-bridge	Number from PAS	Per mill (‰) from PAS	Number from OCRE	Per mill (‰) from OCRE	Number from Shapwick	Per mill (‰) from Shapwick
Spear	18	186	203	127	203	192	NA	NA
Cornucopia	18	186	162	101	229	216	NA	NA

Trophy	14	144	111	69	88	83	NA	NA
Wreath and palm	10	103	70	44	85	80	NA	NA
Shield	9	93	141	88	121	114	NA	NA
Sceptre	8	83	113	71	132	125	NA	NA
Patera	8	83	88	55	119	112	NA	NA
Rudder	8	83	61	38	59	56	NA	NA
Branch	4	41	112	70	42	40	NA	NA
Corn	4	41	3	2	66	62	NA	NA
Animal	4	41	62	39	94	89	<b>25</b>	17
Scales	3	31	33	21	45	43	NA	NA
Account board or abacus	3	31	9	6	38	36	NA	NA
Thyrsus	2	21	14	9	9	9	NA	NA
Fruit	2	21	8	5	28	26	NA	NA
Club and bow	2	21	23	14	9	9	NA	NA
Standard	2	21	10	6	34	32	NA	NA
Book	2	21	4	3	0	0	NA	NA
Lyre	1	10	<b>0</b>	0	5	5	<b>NA</b>	NA
Oenochoe	1	10	<b>0</b>	0	6	6	<b>NA</b>	NA
<b>Total</b>	<b>123</b>	186	<b>1227</b>	127	<b>1412</b>	192	<b>NA</b>	NA

