

NOTES

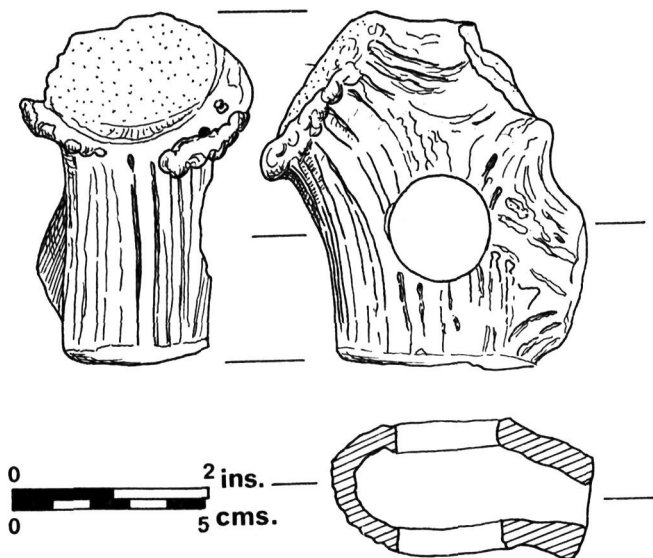
It is hoped that this series of notes continues and that it will be used to provide a place to publish important individual objects or finds that would otherwise remain unpublished.—*Editor.*

AN ANTLER MACEHEAD FROM THE THAMES

BY T. G. MANBY

In the collection of the Municipal Museum and Art Gallery, Clifton Park, Rotherham is an antler Macehead, Accession Number 158.571.21. The implement is attached to a card describing it as "Found in the Thames, Strand-on-the-Green, Middlesex, 1935 January". No further details are available relating to the history or this specimen of the means by which it arrived at the Museum. But it may have formed part of the collection of Ethert Brand, who was Honorary Curator of the Rotherham Museum immediately before the Second World War.

The Macehead presumably came from the Thames at Strand Green, Brentford and is an addition to the many similar finds already published from the Middle Thames.¹ The base of a shed antler of a red deer has been utilised, leaving the burr intact although portions of this have been broken off in recent time. The brow tine had been crudely cut off but the bez tine and the beam have been cleanly cut across and the facets smoothed down. The centre portion of the beam has been perforated in a similar clean manner. The cellular tissue forming the interior of the beam and the base of the bez tine has largely disappeared and inside are small patches of ferruginous sand and gravel concretion. Total length $3\frac{3}{4}$ inches, perforation one inch diameter.



Antler Macehead from the River Thames, Rotherham Museum

The term "Crown antler Maceheads" has been proposed for these implements that have been regarded as the proto-types for the pestle and ovoid stone Maceheads of the Later Neolithic Period.² The majority of antler Maceheads are unassociated finds including many recovered from the Thames during dredging operations.³ Some of the Thames Maceheads have had the burr completely ground away but this feature is retained on the Stand Green implement making it comparable with the Maceheads accompanying burials at Cowlam, Crosby Garrett and Warminster.⁴

ACKNOWLEDGEMENT

The writer is indebted to Mr. L. G. Lovell, Director, Libraries, Museum and Arts, Rotherham, for study facilities and permission to publish this macehead.

NOTES

- ¹ Smith R. "Specimens from the Layton Collection, in Brentford Public Library", *Archaeologia* LXIX (1918), 1-30.
- ² Roe, F., "Stone maceheads and the Latest Neolithic Cultures of the British Isles", in Coles, J. M. and Simpson, D. D. A. (Ed.) *Studies in Ancient Europe* (1968), 159-162.
- ³ Smith, R., *op. cit.*, 7, Figs. 5-7.
- Lawrence, G. F., "Antiquities from the Middle Thames". *Arch. J.*, LXXXVI (1929), 69-98.
- ⁴ Piggot, S., *Neolithic Cultures of the British Isles* (1954), 360.