

Report BAU 1698



nau archaeology

## An Historic Building Recording Photographic Survey at Former Glassworks, Langham, Norfolk

ENF125703



**Prepared for**  
AVADA Country Homes  
11 Brudenhall Avenue  
Canford Cliffs  
Poole  
Dorset  
BH13 7NW



Andy Phelps BA

February 2011



[www.nps.co.uk](http://www.nps.co.uk)

<b>PROJECT CHECKLIST</b>		
Project Manager	David Whitmore	
Draft Completed	Andy Phelps	31/01/2011
Graphics Completed	David Dobson	04/02/2011
Edit Completed	Jayne Bown	07/02/2011
Signed Off	David Whitmore	09/02/2011
<i>Issue 1</i>		

## **NAU Archaeology**

Scandic House  
85 Mountergate  
Norwich  
NR1 1PY

T 01603 756150

F 01603 756190

E [jayne.bown@nps.co.uk](mailto:jayne.bown@nps.co.uk)

[www.nau.org.uk](http://www.nau.org.uk)

BAU 2405

© NAU Archaeology

## Contents

---

<i>Summary</i> .....	1
1.0 Introduction .....	1
2.0 Historical Background .....	1
3.0 Methodology .....	3
4.0 Building Survey Photos .....	3
<i>Acknowledgements</i> .....	34
<i>Bibliography</i> .....	34

## **Figures**

- Figure 1 Site Location  
Figure 2 Location of photos, Blocks A to H  
Figure 3 Location of photos within Blocks A to C

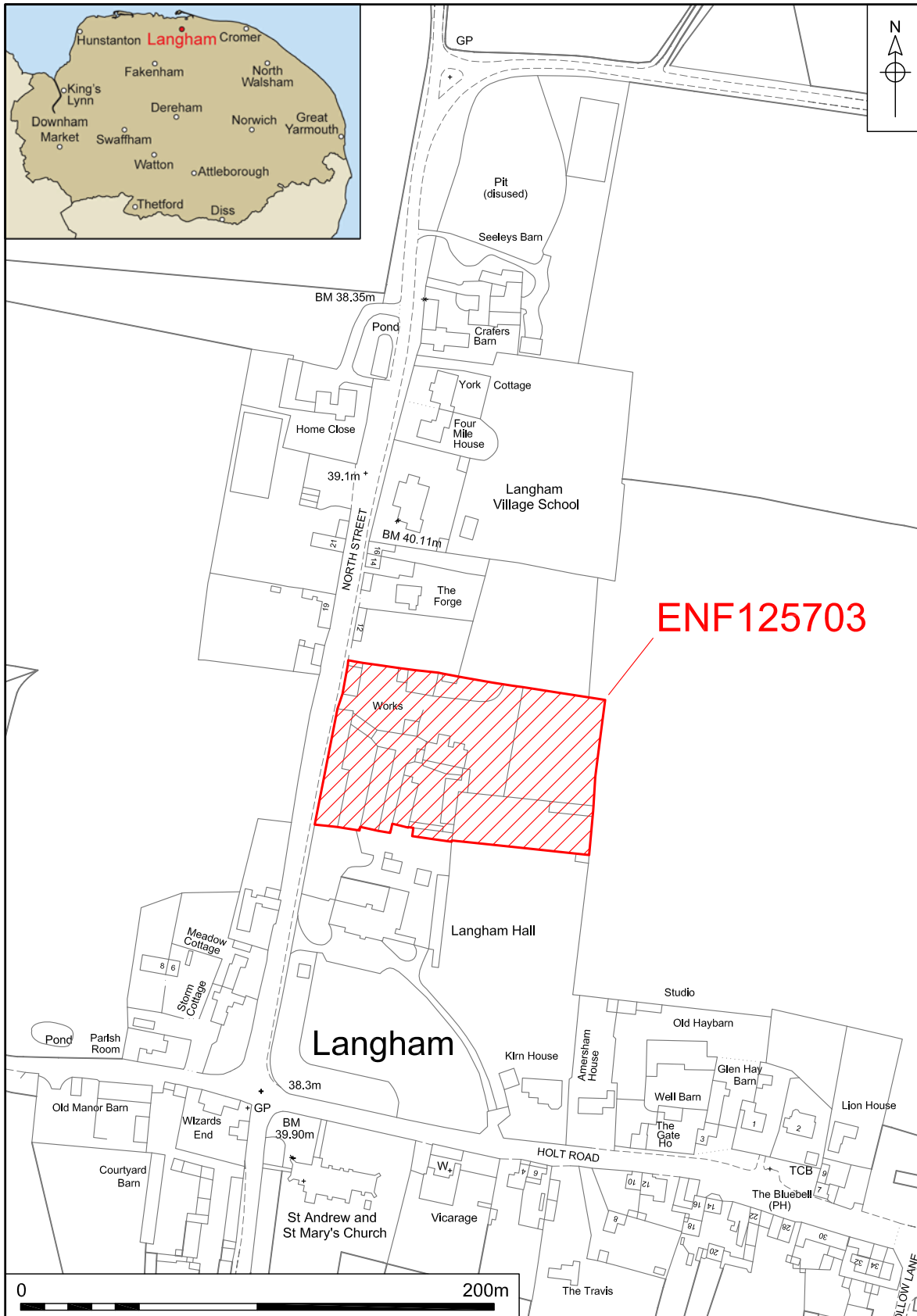
## **Plates**

- Plate 1 Building A, facing north-east  
Plate 2 Building A, facing south-east  
Plate 3 Building G, facing north-east  
Plate 4 Buildings H and A, facing south-west  
Plate 5 Building A north gable, facing east  
Plate 6 Building E, facing south-west  
Plate 7 Building C, facing south-west  
Plate 8 Building E, facing south-west  
Plate 9 Building E, facing north-west  
Plate 10 Building E, facing north  
Plate 11 Building D, facing west  
Plate 12 Central wall, facing north-east  
Plate 13 Yard, facing south-west towards Buildings D and F  
Plate 14 Building D, facing south-west  
Plate 15 Building C, facing north  
Plate 16 Building E, facing east  
Plate 17 Building B, facing south-west  
Plate 18 Building D, facing south  
Plate 19 Building C, facing north-east  
Plate 20 Building A, facing north  
Plate 21 Building A, facing south-west  
Plate 22 Troughs, facing south-west  
Plate 23 Number tags, facing south-east  
Plate 24 Building B, facing north-east  
Plate 25 Crucibles, 0.5m scale  
Plate 26 Building H, facing north  
Plate 27 Building A, facing south-west  
Plate 28 Buildings A and H, facing north  
Plate 29 Building C interior, facing north-east

Plate 30	Building C, interior
Plate 31	Building B, facing north
Plate 32	Building B, facing West, south end of building
Plate 33	Building B, facing west, detail
Plate 34	Building D, facing north-east
Plate 35	Yard between Buildings B and D, facing south
Plate 36	Building B, facing north-west
Plate 37	Building B, facing south
Plate 38	Building D, facing south
Plate 39	Building C with Building E to rear, facing south-east
Plate 40	Interior of Building F, facing west
Plate 41	Interior of Building F, south end facing south
Plate 42	Building F, facing east
Plate 43	Building D, facing north
Plate 44	Building B south corridor, facing south
Plate 45	Building A interior, looking south-west
Plate 46	Central Wall east elevation, facing north
Plate 47	Central wall east elevation, facing west
Plate 48	Central wall northern end, facing west
Plate 49	Building A interior, looking north
Plate 50	Building A interior, looking west
Plate 51	Building A interior, looking north-east
Plate 52	Building A interior, looking north
Plate 53	Building A sliding door, looking south
Plate 54	Interior of porch, Building A, facing east
Plate 55	Building A interior, looking south
Plate 56	Building A interior, facing north
Plate 57	Building A interior, facing north-east
Plate 58	Building A interior, facing north-west
Plate 59	Building A Interior extraction fan facing east, 1x0.5m scale
Plate 60	Interior Building A, facing north
Plate 61	Interior of Building A, straw below tiles
Plate 62	Geometric vent, facing north-west, 0.5m scale
Plate 63	Geometric vent, facing west
Plate 64	Building A, facing south, 0.5m scale

- Plate 65 Building A, facing north
- Plate 66 Building A, facing south from gantry
- Plate 67 Building A, facing south-east from gantry
- Plate 68 Building A, facing south-west
- Plate 69 Building A on gantry, facing north-west
- Plate 70 Building A, facing north from upper door
- Plate 71 Building A interior, facing south
- Plate 72 Building A extraction duct
- Plate 73 Building A blocked vent, 0.5m scale
- Plate 74 Building A interior, looking south from gantry
- Plate 75 Door lintel Building A
- Plate 76 Building A interior north end upper floor, facing west
- Plate 77 Building A North end upper floor, facing north-west
- Plate 78 Building A East door north end
- Plate 79 Building B, facing south
- Plate 80 Building B northern roller
- Plate 81 Building B partition wall hatch
- Plate 82 Building B interior, looking north
- Plate 83 Building B interior central section, facing south-west
- Plate 84 Building B interior central section, facing south-east
- Plate 85 Building B interior facing south
- Plate 86 Building B interior southern cell, facing west
- Plate 87 Building B interior southern cell, looking north
- Plate 88 Empty socket in Building B east wall, 0.5m scale
- Plate 89 Building B blocked window, 0.5m scale
- Plate 90 Building B corridor, facing north
- Plate 91 Building B corridor, facing south
- Plate 92 Building B southern cell, looking south-east
- Plate 93 Building B central cell roof detail
- Plate 94 Building B north cell, facing north
- Plate 95 Building A entrance, facing west
- Plate 96 Dentil cornice on Building A
- Plate 97 Building B, north end west elevation
- Plate 98 Building E west gable
- Plate 99 Building H north elevation

Plate 100	Building B north elevation
Plate 101	West wall of playground
Plate 102	South wall of playground
Plate 103	North wall of playground
Plate 104	West wall of playground
Plate 105	South wall of playground
Plate 106	Southern perimeter wall
Plate 107	Courtyard between Buildings D and F
Plate 108	Initialled stone on north-east corner Building H
Plate 109	Courtyard wall, facing east
Plate 110	Courtyard wall, facing west
Plate 111	Blocked opening on Building C
Plate 112	West elevation of Building G
Plate 113	Blocked opening on Building A, 0.5m scale
Plate 114	Blocked vent on Building A, 0.5m scale 1
Plate 115	West elevation north end Building A
Plate 116	Dentil cornice west elevation Building A



© Crown Copyright. All rights reserved. Local Authority No. 100019340

Figure 1. Site location. Scale 1:2500



Location:	Former Langham Glassworks, Langham, Norfolk
District:	North Norfolk
Grid Ref.:	TG 00765 41412
HER No.:	ENF 125703
OASIS Ref.:	92589
Client:	AVADA Country Homes
Dates of Fieldwork:	21 January 2011

---

## **Summary**

*In January 2011 NAU Archaeology carried out a photographic survey of several agricultural buildings at the former Langham Glassworks site in the village of Langham in north Norfolk.*

## **1.0 INTRODUCTION**

The application to alter several agricultural buildings at Former Langham Glasswork, Langham, north Norfolk by AVADA Country Homes (2006 0770) prompted North Norfolk District Council, acting under the advice of Norfolk Landscape Archaeology (Edwin Rose, 10 September 2007), to request the completion of an historic building recording photographic survey prior to any conversion works. In response AVADA Country Homes commissioned NAU Archaeology to undertake the survey according to an agreed project design prepared by David Whitmore of NAU Archaeology (BAU1698/DW).

The work was carried out on 21 January 2011. The site archive is currently held by NAU Archaeology and on completion of the project will be deposited with the Norfolk Museums and Archaeology Service (NMAS), following the relevant policies on archiving standards.

## **2.0 HISTORICAL BACKGROUND**

The Former Langham Glassworks site was housed within several 18th- and 19th-century agricultural buildings in the north Norfolk village of Langham. The complex of buildings is located on the eastern side of North Street on the northern side of the village, some 150m north of Ss Andrew and Mary's church.

The long threshing barn aligned against and parallel to North Street carries a date stone of 1722 and the initials MSF, although this may refer to a later alteration to the building (NHER 40323). This building carries a Grade II listing along with 'The Implement Shed' immediately to the north (LBNs 223398 and 223399 respectively). The Ordnance Survey 1st edition mapping suggests the farm is associated with Langham Hall (NHER 6173) a Grade II listed early 19th-century hall immediately to the south.

The buildings were converted to industrial use in 1979 when the glass works was established on the site. The glass works operated with a visitor centre as a popular tourist attraction until 2005 when it was relocated and the site has lain disused since.

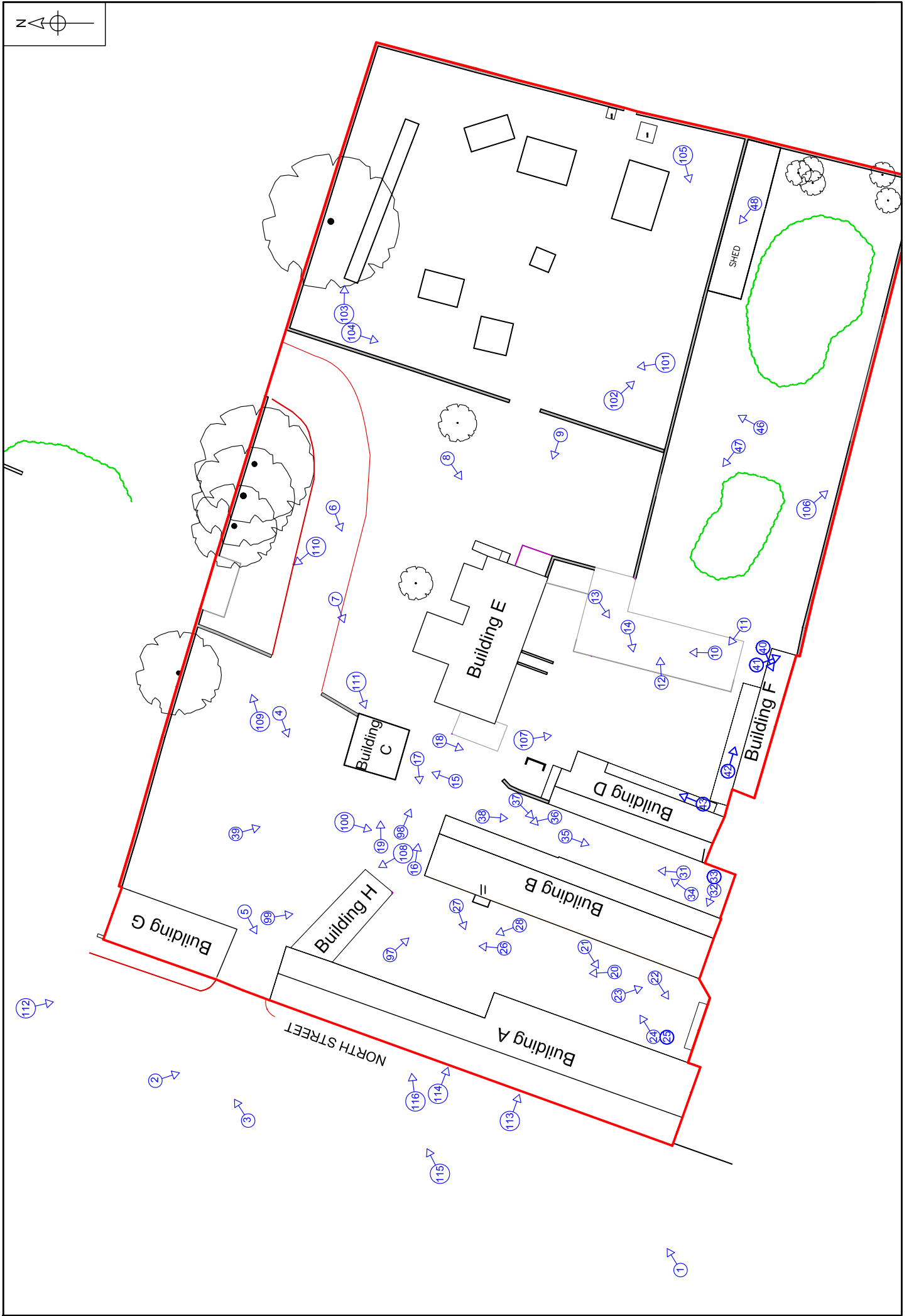


Figure 2. Location of photos. Not to scale

### **3.0 METHODOLOGY**

The following survey conforms to the Photographic Survey as defined in *Understanding Historic Buildings: a guide to good practice* (English Heritage 2006).

The archive photographic record was created using black and white 35mm film with digital photographs taken to provide illustrative material for the report.

The buildings have been disused for several years and undergrowth has established itself across some areas. In particular bushes in the courtyard west of Building B obscured the eastern external views of Building A. At the time of the visit parts of the site were being used as a storage yard preventing examination of the eastern elevation of Building G. Internal access was not available to Buildings D, E, F or G, however the latter two appeared to have been converted to office space while the former two had been used as tea rooms associated with the visitor centre during its use as a glass works.

### **4.0 BUILDING SURVEY PHOTOS**



Plate 1. Building A, facing north-east



Plate 2. Building A, facing south-east



Plate 3. Building G, facing north-east



Plate 4. Buildings H and A, facing south-west



Plate 5. Building A north gable, facing east



Plate 6. Building E, facing south-west



Plate 8. Building E, facing south-west



Plate 7. Building C, facing south-west



Plate 9. Building E, facing north-west



Plate 10. Building E, facing north



Plate 11. Building D, facing west



Plate 12. Central wall, facing north-east



Plate 13. Yard, facing south-west towards Buildings D and F



Plate 14. Building D, facing south-west



Plate 15. Building C, facing north



Plate 16. Building E, facing east



Plate 17. Building B, facing south-west



Plate 18. Building D, facing south



Plate 19. Building C, facing north-east



Plate 20. Building A, facing north





Plate 21. Building A, facing south-west



Plate 22. Troughs, facing south-west



Plate 23. Number tags, facing south-east



Plate 24. Building B, facing north-east



Plate 26. Building H, facing north

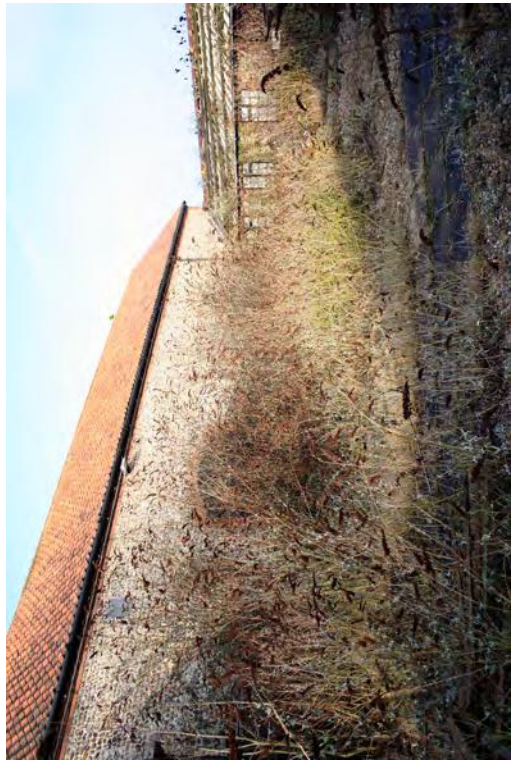


Plate 28. Buildings A and H, facing north



Plate 25. Crucibles, 0.5m scale



Plate 27. Building A, facing south-west



Plate 29. Building C interior, facing north-east



Plate 30. Building C, interior



Plate 31. Building B, facing north



Plate 32. Building B, facing west, south end of building



Plate 34. Building D, facing north-east

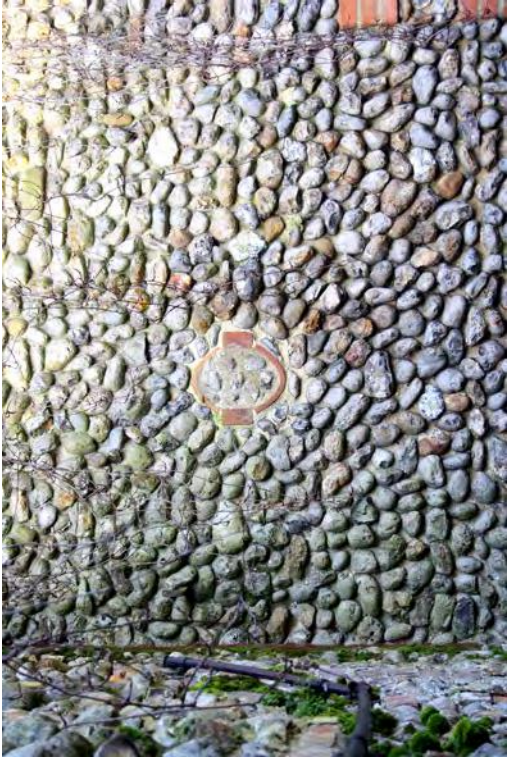


Plate 33. Building B, facing west, detail



Plate 36. Building B, facing north-west



Plate 35. Yard between Buildings B and D, facing south



Plate 37. Building B, facing south



Plate 38. Building D, facing south



Plate 39. Building C with Building E to rear, facing south-east

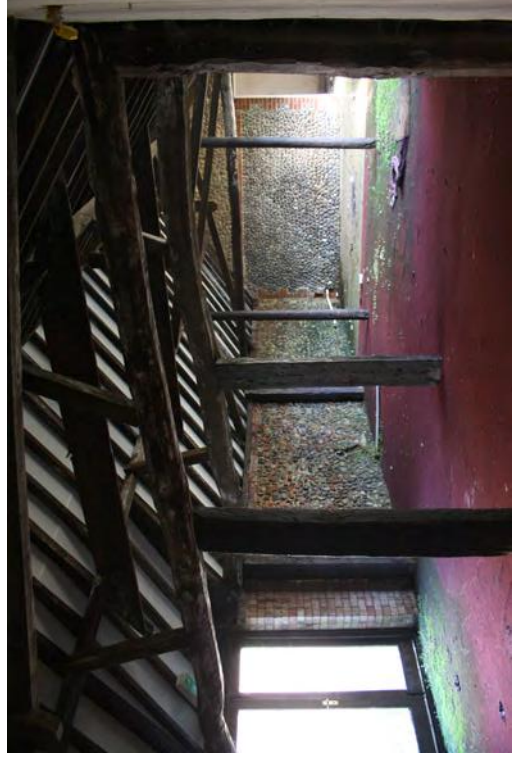


Plate 40. Interior of building F, facing west



Plate 41. Interior of Building F, south end facing south

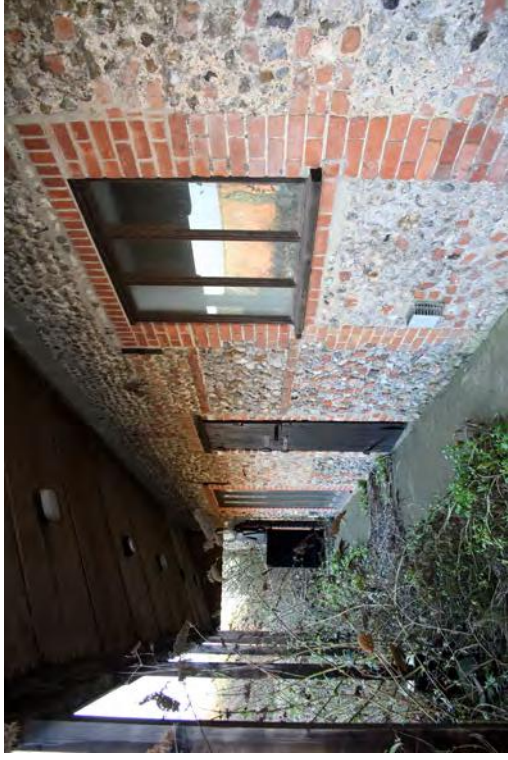


Plate 42. Building F, facing east



Plate 43. Building D, facing north



Plate 44. Building B south corridor, facing south

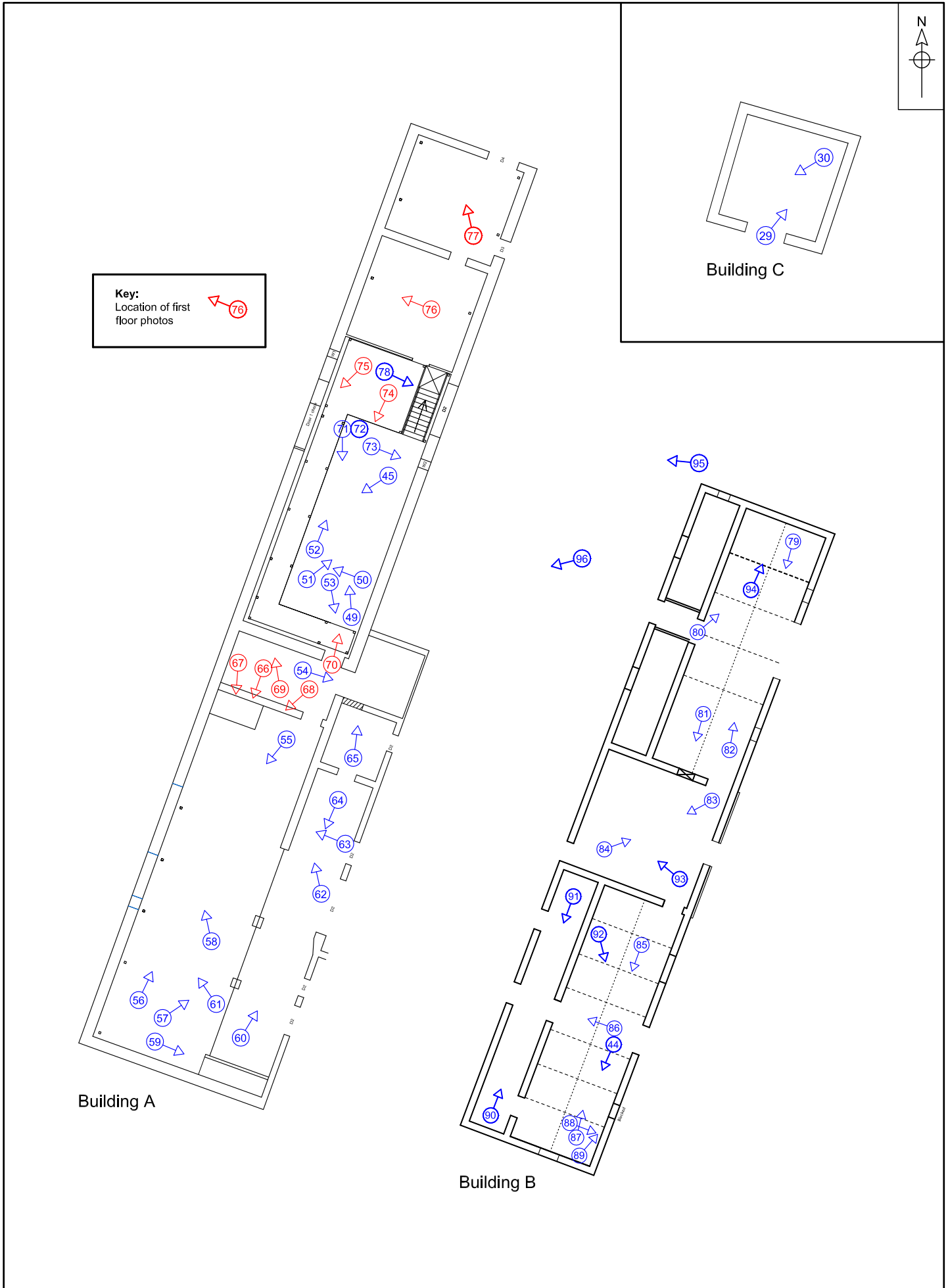


Figure 3. Location of photos within Buildings A to C. Not to scale



Plate 45. Building A interior, looking south-west



Plate 46. Central Wall east elevation, facing north



Plate 47. Central wall east elevation, facing west



Plate 48. Central wall northern end, facing west





Plate 49. Building A interior, looking north



Plate 50. Building A interior, looking west



Plate 51. Building A interior, looking north-east



Plate 52. Building A interior, looking north



Plate 53. Building A sliding door, looking south



Plate 54. Interior of porch, Building A, facing east



Plate 55. Building A interior, looking south



Plate 56. Building A interior, facing north



Plate 58. Building A interior, facing north-west



Plate 60. Interior building A, facing north



Plate 57. Building A interior, facing north-east



Plate 59. Building A Interior extraction fan facing east,  
1x0.5m scale



Plate 61. Interior of Building A, straw below tiles



Plate 62. Geometric vent, facing north-west, 0.5m scale



Plate 63. Geometric vent, facing west



Plate 64. Building A, facing south, 0.5m scale



Plate 65. Building A, facing north



Plate 66. Building A, facing south from gantry



Plate 67. Building A, facing south-east  
from gantry

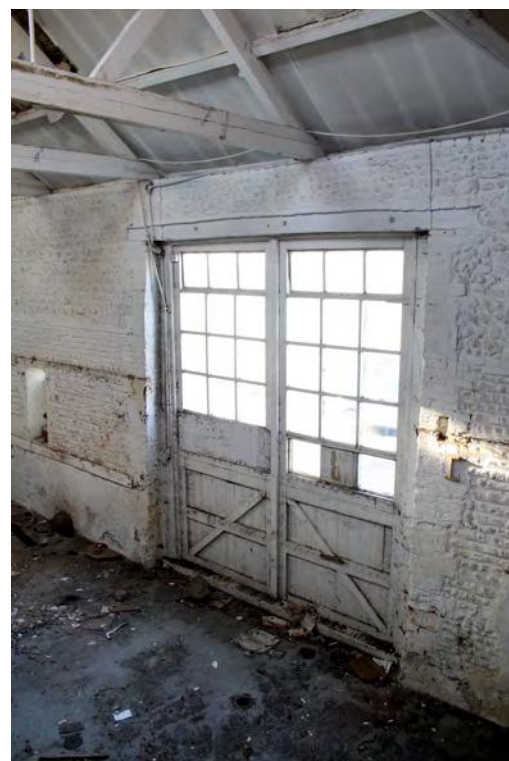


Plate 68. Building A, facing south-west



Plate 70. Building A, facing north from upper door



Plate 72. Building A extraction duct



Plate 69. Building A on gantry, facing north-west



Plate 71. Building A interior, facing south



Plate 73. Building A blocked vent, 0.5m scale



Plate 74. Building A interior, looking south from gantry



Plate 75. Door lintel Building A



Plate 76. Building A interior north end upper floor, facing west



Plate 77. Building A north end upper floor, facing north-west

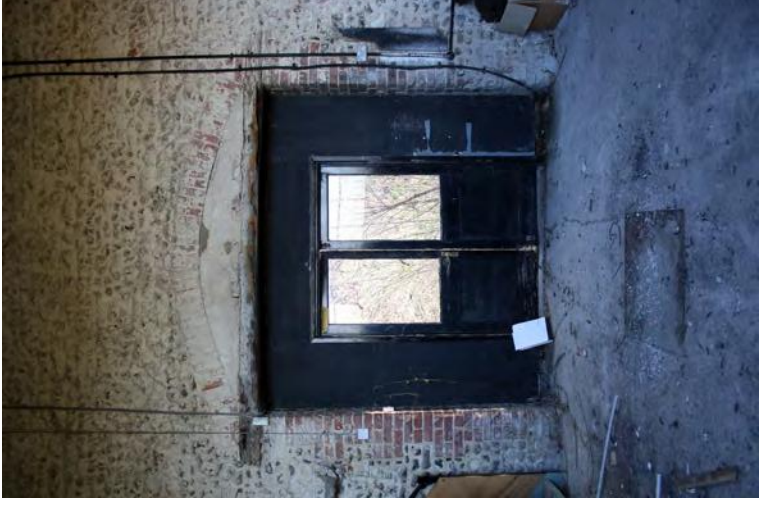


Plate 78. Building A east door north end



Plate 79. Building B, facing south



Plate 80. Building B northern roller





Plate 81. Building B partition wall hatch



Plate 82. Building B interior, looking north



Plate 83. Building B interior central section, facing south-west



Plate 84. Building B interior central section, facing north-east



Plate 85. Building B interior facing south



Plate 86. Building B interior southern cell, facing west



Plate 87. Building B interior southern cell, looking north



Plate 88. Empty socket in Building B east wall, 0.5m scale



Plate 89. Building B blocked window, 0.5m scale



Plate 90. Building B corridor, facing north



Plate 91. Building B corridor, facing south



Plate 92. Building B southern cell, looking south-east



Plate 93. Building B central cell roof detail



Plate 94. Building B north cell, facing north



Plate 95. Building A entrance, facing west



Plate 96. Dentil cornice on Building A



Plate 98. Building E west gable



Plate 100. Building B north elevation



Plate 97. Building B, north end west elevation



Plate 99. Building H north elevation



Plate 102. South wall of playground



Plate 104. West wall of playground



Plate 101. West wall of playground



Plate 103. North wall of playground



Plate 106. Southern perimeter wall



Plate 108. Initialled stone on north-east corner Building H



Plate 105. South wall of playground



Plate 107. Courtyard between Buildings D and F



Plate 109. Courtyard wall, facing east



Plate 110. Courtyard wall, facing west



Plate 111. Blocked opening on Building C



Plate 112. West elevation of Building G





Plate 114. Blocked vent on Building A, 0.5m scale



Plate 116. Dentil cornice west elevation Building A



Plate 113. Blocked opening on Building A, 0.5m scale



Plate 115. West elevation north end Building A

## ***Acknowledgements***

The field work was carried out by the author with graphics prepared by the author and David Dobson. The report was edited by Jayne Bown.

## ***Bibliography***

- |                                  |      |   |
|----------------------------------|------|---|
| Communities and Local Government | 2010 | <i>Planning Policy Statement 5: Planning for the Historic Environment</i> , TSO, Norwich                |
| English Heritage                 | 2006 | <i>Understanding historic buildings: A guide to good recording practice</i> . London, English Heritage. |