

# Lasswade High School: Evaluation Data Structure Report

AOC Project 21857  
OASIS No. aocarcha1-108805

22<sup>nd</sup> August 2011



ARCHAEOLOGY

HERITAGE

CONSERVATION

# Lasswade High School: Evaluation Data Structure Report

---

<b>On Behalf of:</b>	<b>BAM Construction Ltd</b> Currie House, 597 Calder Road, Pentland Gait Office Park, Edinburgh, EH11 4HJ
<b>National Grid Reference (NGR):</b>	<b>NT 30259 64906</b>
<b>AOC Project No:</b>	<b>21857</b>
<b>OASIS Project No:</b>	<b>aocarcha1-108805</b>
<b>Prepared by:</b>	<b>Lindsay Dunbar &amp; Charlie Morris</b>
<b>Illustration by:</b>	<b>Stefan Sagrott</b>
<b>Date of Fieldwork:</b>	<b>1<sup>st</sup> to 8<sup>th</sup> August 2011</b>
<b>Date of Report:</b>	<b>22<sup>nd</sup> August 2011</b>

This document has been prepared in accordance with AOC standard operating procedures.

<b>Author: Lindsay Dunbar &amp; Charlie Morris</b>	<b>Date: 22<sup>nd</sup> August 2011</b>
<b>Approved by: John Gooder</b>	<b>Date: 22<sup>nd</sup> August 2011</b>
<b>Draft/Final Report Stage: Draft</b>	<b>Date: 22<sup>nd</sup> August 2011</b>

**Enquiries to:** AOC Archaeology Group  
Edgefield Industrial Estate  
Edgefield Road  
Loanhead  
EH20 9SY

Tel. 0131 440 3593  
Fax. 0131 440 3422  
e-mail. [admin@aocarchaeology.com](mailto:admin@aocarchaeology.com)



## Contents

	Page
List of illustrations.....	3
List of appendices .....	3
Abstract.....	4
1 INTRODUCTION.....	5
1.1 Background.....	5
1.2 Location.....	5
1.3 Archaeological background.....	5
2 OBJECTIVES.....	6
3 METHODOLOGY.....	6
4 RESULTS.....	6
5 CONCLUSION .....	7
6 RECOMMENDATIONS.....	7
7 REFERENCES.....	7
APPENDIX 1: Trench Descriptions .....	9
APPENDIX 2: Photographic Record .....	14
APPENDIX 3: ' <i>Discovery and Excavation in Scotland</i> ' Report.....	15

## List of illustrations

Figure 1      Site Location & Plan of Evaluation Trenches

## List of appendices

Appendix 1      Trench Descriptions  
 Appendix 2      Photographic Record  
 Appendix 3      '*Discovery and Excavation in Scotland*' Report

## Abstract

---

This report represents the results of an archaeological evaluation undertaken by AOC Archaeology Group prior to a new school development at Lasswade High School, Bonnyrigg, Midlothian.

The archaeological evaluation comprised excavation of 21 trenches totalling 2048 m<sup>2</sup> equating to just over the required 5% evaluation trenching sample. Neither significant archaeological features nor unstratified artefacts were observed during the evaluation.

# 1 INTRODUCTION

## 1.1 Background

- 1.1.1 AOC Archaeology Group was commissioned by BAM Construction to undertake a programme of archaeological works ahead of the construction of the new Lasswade High School. Bonnyrigg, Midlothian. The need for and scope of archaeological works had been determined by the Midlothian Council who are advised on archaeological matters by East Lothian Council Archaeology Service (ELCAS).
- 1.1.2 The proposed development lies within the administrative area of Midlothian Council, which is advised on archaeological matters by East Lothian Council Archaeology Service (ELCAS). A programme of archaeological works has been specified by ELCAS; with the required works in keeping with the policies outlined in Scottish Planning Policy (Scottish Government, February 2010) and *Planning and Archaeology 2/2011 (Scottish Government 2011)* in order to determine and record the extent and significance of any archaeological remains which may be present within the development area.
- 1.3 A *Written Scheme of Investigation* (AOC 2011) was agreed with ELCAS in advance of the evaluation being undertaken.

## 1.2 Location

- 1.2.1 The development area (centred NGR: NT 30259 64906) lies immediately to the south of the existing Lasswade High School buildings and currently serves as an area of playing fields amounting to approximately 4 ha.

## 1.3 Archaeological background

- 1.3.1 Neither known archaeological sites existed nor had prior archaeological interventions occurred within the development area prior to the evaluation. A large area of ground to the south around the former Polton Colliery was evaluated in 2004; this revealed extensive rig & furrow cultivation remains of probable medieval/early post-medieval date (Jones & Conolly 2004).
- 1.3.2 Generally heritage sites in the immediate are built structures of late date. However isolated finds of significant artefactual material are recorded - a 'Food Vessel' (prehistoric burial) was unearthed below Dobbie's Knowe (PSAS 1938) and in 1918 a 'first brass' of Hadrian (AD 117-138) was found on East Polton Farm (McDonald 1918).
- 1.3.3 It was considered highly probable that the construction of the existing school buildings will have archaeologically sterilised their immediate area (this area will be the location of the new school's playing fields). However in the area to the south, where the new school will be built, cartographic evidence shows this area as remaining in agricultural usage until most recent utilisation as playing fields (McCarthy 2010). Some potential for archaeological survival was therefore to be expected.

## 2 OBJECTIVES

2.1 The objectives of the archaeological evaluation were:

- i) to determine and assess the character, extent, condition, quality, date and significance of any buried archaeological remains within the proposed development area;
- ii) to advise and implement an appropriate form of mitigation, such as excavation, post-excavation analyses and publication, given the infeasibility of preserving the archaeological material *in situ*, should significant archaeological remains be encountered.

## 3 METHODOLOGY

- 3.1 Trenching comprised the excavation of 21 trenches of varying size and orientation located across the site, while excavated in locations that would allow continued use of the existing playing fields. The evaluation was undertaken by means of a JCB 3CX wheeled excavator (or 360° tracked excavator in southern area) equipped with a 2 m wide toothless ditching bucket. Excavation was undertaken in shallow units/spits until the first significant archaeological horizon or natural subsoil was reached. All machine excavation was supervised by an experienced field archaeologist.
- 3.2 All trial trenching was undertaken according to AOC Archaeology Group's standard operating procedures. The trenches were backfilled on completion of the evaluation.

## 4 RESULTS

### 4.1 Introduction

- 4.1.1 The archaeological evaluation was undertaken between 1<sup>st</sup> and 8<sup>th</sup> August 2011. Overall weather conditions were good; comprising clear and dry conditions yielding good archaeological visibility. In total 2048 m<sup>2</sup> of trenching were opened, equating to just over the required 5% evaluation. The following should be read in conjunction with the data presented in Appendices 1-3.
- 4.1.2 Topsoil comprised a dark brown clay rich matrix overlying a natural subsoil of a varying yellow/orange/brown clay with occasional gravel sized inclusions. Occasional deposits of made ground and areas of buried hardstanding showed the development area to have been previously disturbed in places. Former land improvement regimes were evidenced by considerable numbers of field drains predominantly ceramic field drains with the occasional stone/rubble filled drain. Orientation of the drains was relatively constant across the site with an even spread between E/W and NW/SE. Occasional modern ceramic and glass herds together with recent detritus (not retained) were observed within the topsoil.
- 4.1.3 A single linear feature was recorded in Trenches 1 and 2. It was aligned NW-SE and extended over approximately 25 m. A section through the feature in Trench 1 revealed a shallow gently sloping

profile onto a rounded base 0.12 m deep and a single homogenous fill. The edges of the feature are diffuse and it measures on average 1.5 m wide though the width does range from 1.0 m to nearly 2.0 m.

## 5 CONCLUSION

- 5.1 The made ground encountered across the site is interpreted as levelling material originating when the playing field and existing school was constructed.
- 5.2 The linear feature in Trenches 1 and 2 is interpreted as either a field boundary or the last remaining vestiges of 'rig and furrow' agriculture. Regardless of its exact function the feature is interpreted as of limited significance and most likely agricultural in origin. No artefacts were recovered from this feature.
- 5.3 No structural remains, negative cut features or anthropic deposits of any archaeological significance were found. No unstratified artefactual material of archaeological significance was recovered from the topsoil.

## 6 RECOMMENDATIONS

- 6.1 Neither archaeological features nor residual artefacts were revealed by the evaluation. The significant balance of probability is that the development area is archaeologically sterile. No further archaeological works are considered necessary. This recommendation will require confirmation by ELCAS on behalf of Midlothian Council.

## 7 REFERENCES

- Jones, E & Conolly, R 2004 'Hopefield, Bonnyrigg (Cockpen parish), evaluation'. *Discovery & Excavation in Scotland*, vol 5.
- McDonald, G 1918 'Roman coins found in Scotland, *Proc Soc Antiq Scot*, vol 52.
- PSAS 1938 'Donations to and purchases for the Museum and Library, *Proc Soc Antiq Scot*, vol 72.
- Scottish Government 2010 *Scottish Planning Policy*.
- Scottish Government 2011 *Planning and Archaeology 2/2011*.

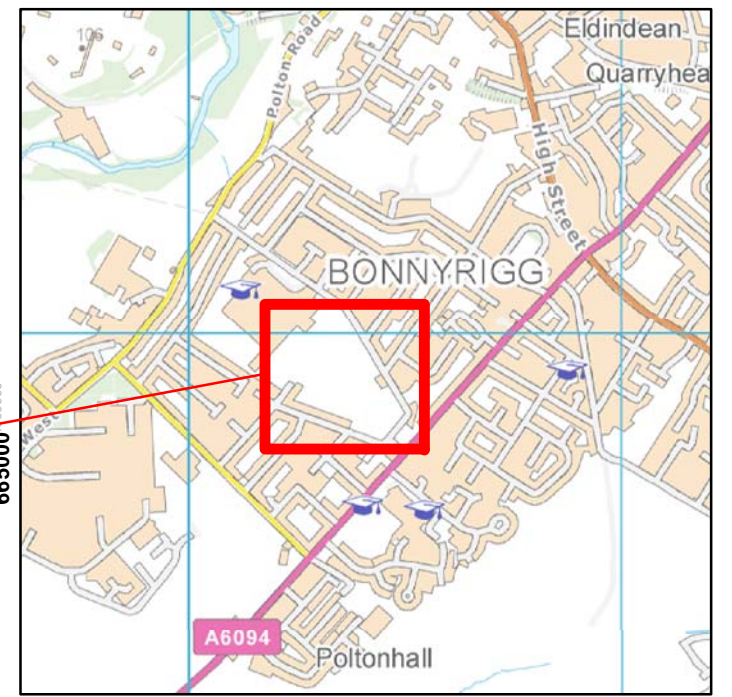
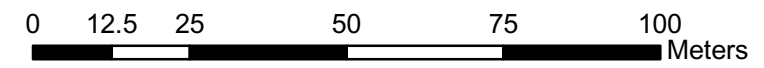
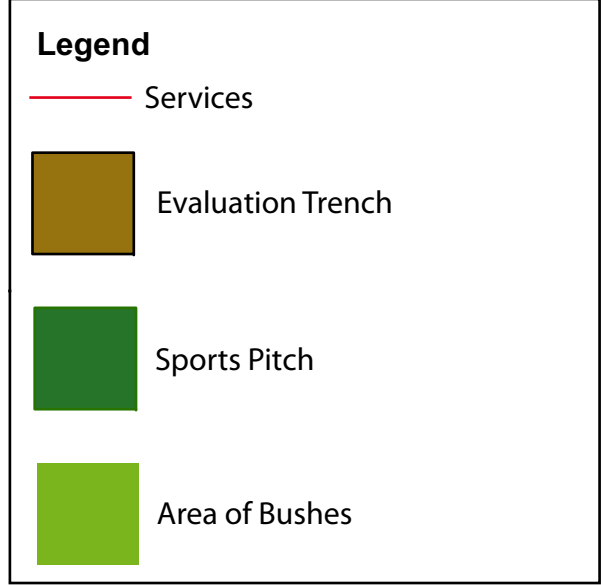


Figure 1: Evaluation trench locations, Lasswade High School





# **Lasswade High School: Evaluation Data Structure Report**

## **Section 2: Appendices**

## APPENDIX 1: Trench Descriptions

### Trench 1

<i>Dimensions</i>	35 m by 2 m
<i>Orientation</i>	NE-SW
<i>Depth of Topsoil</i>	0.20 - 0.25 m
<i>Depth of Excavations</i>	Up to 0.65 m
<i>Subsoil</i>	Yellow brown sandy clay
<i>Features</i>	Three stone filled drains and 3 ceramic field drains; area of hard-standing (cinder & industrial waste) overlies subsoil at NE end of trench
<i>Significant Features</i>	Very shallow NW-SE aligned feature, c.1.5 m wide, cut by field drains.
<i>Finds</i>	None

### Trench 2

<i>Dimensions</i>	55 m by 2 m
<i>Orientation</i>	NW-SE
<i>Depth of Topsoil</i>	0.22 - 0.24 m
<i>Depth of Excavations</i>	Up to 0.49 m
<i>Subsoil</i>	Yellow brown sandy clay
<i>Features</i>	Seven stone filled drains and nine ceramic field drains; area of red blaze overlies subsoil at NW end of trench
<i>Significant Features</i>	Very shallow NW-SE aligned feature, c.1.5 m wide, cut by field drains. A continuation of feature in Trench 1.
<i>Finds</i>	None

### Trench 3

<i>Dimensions</i>	30 m by 2 m
<i>Orientation</i>	NE - SW
<i>Depth of Topsoil</i>	0.28 - 0.30 m
<i>Depth of Excavations</i>	Up to 0.55 m
<i>Subsoil</i>	Yellow brown sandy clay
<i>Features</i>	Four stone filled drains
<i>Significant Features</i>	None
<i>Finds</i>	None

### Trench 4

<i>Dimensions</i>	30 m by 2 m
<i>Orientation</i>	NE - SW
<i>Depth of Topsoil</i>	0.25 - 0.30 m
<i>Depth of Excavations</i>	Up to 0.70 m
<i>Subsoil</i>	Yellow brown sandy clay
<i>Features</i>	Three ceramic field drains. Modern playing field topsoil lay over a buried topsoil some 0.4 m deep.
<i>Significant Features</i>	None
<i>Finds</i>	None

### Trench 5

<i>Dimensions</i>	30 m by 2 m
<i>Orientation</i>	NE - SW
<i>Depth of Topsoil</i>	0.27 - 0.35 m
<i>Depth of Excavations</i>	Up to 0.70 m
<i>Subsoil</i>	Yellow brown sandy clay
<i>Features</i>	Five ceramic field drains. Modern playing field topsoil lay over a buried topsoil some 0.4 m deep.

*Significant Features* None  
*Finds* None

**Trench 6**

*Dimensions* 52 m by 2 m  
*Orientation* NW-SE  
*Depth of Topsoil* 0.25 - 0.35 m  
*Depth of Excavations* Up to 0.62 m  
*Subsoil* Yellow brown sandy clay  
*Features* Eleven ceramic field drains. Modern playing field topsoil lay over a buried topsoil some 0.3 m deep. AT SE end of trench a layer of industrial waste – ash, blaze lay between the two topsoil layers.  
*Significant Features* None  
*Finds* None

**Trench 7**

*Dimensions* 52 m by 2 m  
*Orientation* NW-SE  
*Depth of Topsoil* 0.30 - 0.31 m  
*Depth of Excavations* Up to 0.73 m  
*Subsoil* Orange brown sandy clay  
*Features* Eight ceramic field drains. Modern playing field topsoil lay over a buried topsoil up to 0.45 m deep.  
*Significant Features* None  
*Finds* None

**Trench 8**

*Dimensions* 52 m by 2 m  
*Orientation* NW-SE  
*Depth of Topsoil* 0.25 - 31 m  
*Depth of Excavations* Up to 1.13 m  
*Subsoil* Orange brown sandy clay  
*Features* Eight ceramic field drains. Modern playing field topsoil lay over redeposited natural clay up to 0.7 m deep which in turn covered a buried topsoil up to 0.25 m deep.  
*Significant Features* None  
*Finds* None

**Trench 9**

*Dimensions* 52 m by 2 m  
*Orientation* NE - SW  
*Depth of Topsoil* 0.25 - 0.55 m  
*Depth of Excavations* Up to 0.55 m  
*Subsoil* Orange/yellow brown sandy clay  
*Features* Seven ceramic field drains. Modern playing field topsoil lay over a clay rich buried topsoil up to 0.30 m deep.  
*Significant Features* None  
*Finds* None

**Trench 10**

*Dimensions* 52 m by 2 m  
*Orientation* NE - SW  
*Depth of Topsoil* 0.25 - 0.30 m  
*Depth of Excavations* Up to 0.55 m  
*Subsoil* Orange/yellow brown sandy clay

<i>Features</i>	Seven ceramic field drains. Modern playing field topsoil lay over a clay rich buried topsoil up to 0.30 m deep.
<i>Significant Features</i>	None
<i>Finds</i>	None
<b>Trench 11</b>	
<i>Dimensions</i>	52 m by 2 m
<i>Orientation</i>	NE - SW
<i>Depth of Topsoil</i>	0.25 - 0.27 m
<i>Depth of Excavations</i>	Up to 0.50 m
<i>Subsoil</i>	Orange/yellow brown sandy clay
<i>Features</i>	Nine ceramic field drains. Modern playing field topsoil lay over a clay rich buried topsoil up to 0.30 m deep.
<i>Significant Features</i>	None
<i>Finds</i>	None
<b>Trench 12</b>	
<i>Dimensions</i>	52 m by 2 m
<i>Orientation</i>	NW-SE
<i>Depth of Topsoil</i>	0.25 - 0.26 m
<i>Depth of Excavations</i>	Up to 0.50 m
<i>Subsoil</i>	Orange/yellow brown sandy clay
<i>Features</i>	Nine ceramic field drains. Modern playing field topsoil lay over a clay rich buried topsoil up to 0.30 m deep.
<i>Significant Features</i>	None
<i>Finds</i>	None
<b>Trench 13</b>	
<i>Dimensions</i>	60 m by 2 m
<i>Orientation</i>	NW-SE
<i>Depth of Topsoil</i>	0.21 - 0.26 m
<i>Depth of Excavations</i>	Up to 1.1 m
<i>Subsoil</i>	Orange/yellow brown sandy clay
<i>Features</i>	Five ceramic field drains. Modern playing field topsoil lay over redeposited natural clay up to 0.55 m deep which in turn covered a buried topsoil up to 0.40 m deep.
<i>Significant Features</i>	None
<i>Finds</i>	None
<b>Trench 14</b>	
<i>Dimensions</i>	52 m by 2 m
<i>Orientation</i>	NE - SW
<i>Depth of Topsoil</i>	0.23 - 0.34 m
<i>Depth of Excavations</i>	Up to 0.49 m
<i>Subsoil</i>	Yellow brown sandy clay
<i>Features</i>	Nine ceramic field drains; Topsoil lays over a mixed deposit of red blaze, redeposited natural, hardcore overlies subsoil at SW end of trench
<i>Significant Features</i>	None
<i>Finds</i>	None
<b>Trench 15</b>	
<i>Dimensions</i>	52 m by 2 m
<i>Orientation</i>	NE - SW
<i>Depth of Topsoil</i>	0.20 - 0.26 m
<i>Depth of Excavations</i>	Up to 0.45 m

<i>Subsoil</i>	Yellow brown sandy clay
<i>Features</i>	Nine ceramic field drains; Topsoil lays over a mixed deposit of red blaze, redeposited natural, hardcore overlies subsoil at SW end of trench
<i>Significant Features</i>	None
<i>Finds</i>	None

**Trench 16**

<i>Dimensions</i>	52 m by 2 m
<i>Orientation</i>	NE - SW
<i>Depth of Topsoil</i>	0.20 - 0.24 m
<i>Depth of Excavations</i>	Up to 0.42 m
<i>Subsoil</i>	Orange brown sandy clay
<i>Features</i>	Six ceramic field drains; Topsoil lays over a mixed deposit of red blaze, redeposited natural, hardcore overlies subsoil at SW end of trench
<i>Significant Features</i>	None
<i>Finds</i>	None

**Trench 17**

<i>Dimensions</i>	52 m by 2 m
<i>Orientation</i>	E - W
<i>Depth of Topsoil</i>	0.23 - 0.38 m
<i>Depth of Excavations</i>	Up to 0.40 m
<i>Subsoil</i>	Orange brown sandy clay
<i>Features</i>	Seven ceramic field drains; some NE-SW plough scarring evident
<i>Significant Features</i>	None
<i>Finds</i>	None

**Trench 18**

<i>Dimensions</i>	32 m by 2 m
<i>Orientation</i>	NW-SE
<i>Depth of Topsoil</i>	0.31 - 0.33 m
<i>Depth of Excavations</i>	Up to 0.78 m
<i>Subsoil</i>	Orange brown sandy clay
<i>Features</i>	Five ceramic field drains; Topsoil lays over a mixed deposit of topsoil & redeposited natural.
<i>Significant Features</i>	None
<i>Finds</i>	None

**Trench 19**

<i>Dimensions</i>	52 m by 2 m
<i>Orientation</i>	NW-SE
<i>Depth of Topsoil</i>	0.24 - 0.45 m
<i>Depth of Excavations</i>	Up to 0.54 m
<i>Subsoil</i>	Orange brown sandy clay
<i>Features</i>	Three ceramic field drains; some NE-SW plough scarring evident where topsoil shallow
<i>Significant Features</i>	None
<i>Finds</i>	None

**Trench 20**

<i>Dimensions</i>	64 m by 2 m
<i>Orientation</i>	NW-SE
<i>Depth of Topsoil</i>	0.27 – 0.42 m
<i>Depth of Excavations</i>	Up to 1.01 m
<i>Subsoil</i>	Orange brown sandy clay

*Features* Three ceramic field drains; some NE-SW plough scarring evident where topsoil shallow. Topsoil lays over a mixed deposit of topsoil & redeposited natural where trench deeper to SE.

*Significant Features* None

*Finds* None

**Trench 21**

*Dimensions* 70 m by 2 m

*Orientation* NW-SE

*Depth of Topsoil* 0.32 - 0.41 m

*Depth of Excavations* Up to 0.57 m

*Subsoil* Orange brown sandy clay

*Features* Three ceramic field drains; some NE-SW plough scarring evident where topsoil shallow. Topsoil lays over a mixed deposit of topsoil & redeposited natural where trench deeper to SE.

*Significant Features* None

*Finds* None

## APPENDIX 2: Photographic Record

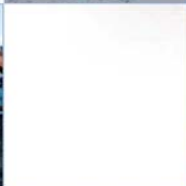
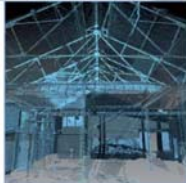
Black & White Print Film & Digital

Frame	Trench	Description	From
1-2		Registration	
3	1	Post excavation overall view	SE
4	1	Field drain	S
5	2	Post excavation overall view	SE
6	2	Intersection of field drains	SW
7	3	Post excavation overall view	NE
8	4	Post excavation overall view	NE
9	5	Post excavation overall view	SW
10	5	Field drains	
11	6	Post excavation overall view	SE
12	6	Service track	
13	7	Post excavation overall view	NW
14	8	Post excavation overall view	SE
15	8	Post excavation SE end of trench - drain & section	SW
16	8	Post excavation view of SE end of trench	NW
17	9	Post excavation overall view	SE
18	9	Post excavation overall view	SE
19	10	Post excavation overall view	SE
20	11	Post excavation overall view	NE
21	12	Post excavation overall view	SE
22	12	Post excavation view of NW end	NE
23	13	Post excavation view of SE end of trench	NW
24	13	Post excavation overall NW end of trench	NW
25	13	Drain & trench section	W
26	14	Post excavation overall view	SW
27	15	Post excavation overall view	SW
28	16	Post excavation overall view	SW
29	17	Post excavation overall view	W
30	18	Post excavation overall view	NW
31	19	Post excavation overall view	NW
32	20	Post excavation overall view	NW
33	21	Post excavation overall view	NW
34	22	Post excavation overall view	NW
35		General view of back-filled trenches	

**APPENDIX 3: 'Discovery and Excavation in Scotland' Report**

<b>LOCAL AUTHORITY:</b>	East Lothian Council
<b>PROJECT TITLE/SITE NAME</b>	Lasswade High School
<b>PROJECT CODE:</b>	AOC 21857
<b>PARISH:</b>	Cockpen
<b>NAME OF CONTRIBUTOR:</b>	Lindsay Dunbar & Charlie Morris
<b>NAME OF ORGANISATION:</b>	AOC Archaeology Group
<b>TYPE(S) OF PROJECT:</b>	Archaeological Evaluation
<b>NMRS NO(S)</b>	N/A
<b>SITE/MONUMENT TYPE(S):</b>	N/A
<b>SIGNIFICANT FINDS:</b>	None
<b>NGR (2 letters, 6 figures)</b>	NT 30259 64906
<b>START DATE</b> (this season)	1 <sup>st</sup> August 2011
<b>END DATE</b> (this season)	8 <sup>th</sup> August 2011
<b>PREVIOUS WORK</b> (incl. DES ref.)	N/A
<b>MAIN (NARRATIVE) DESCRIPTION:</b> (May include information from other fields)	<p>An archaeological evaluation was undertaken prior to a new school development at Lasswade High School. Bonnyrigg.</p> <p>The archaeological evaluation comprised excavation of 21 trenches totalling 2048 m<sup>2</sup> equating to just over the required 5% evaluation trenching sample. Neither significant archaeological features nor unstratified artefacts were observed during the evaluation.</p>
<b>PROPOSED FUTURE WORK:</b>	N/A
<b>CAPTION(S) FOR ILLUSTRS:</b>	N/A
<b>SPONSOR OR FUNDING BODY:</b>	Bam Construction Ltd
<b>ADDRESS OF MAIN CONTRIBUTOR:</b>	Edgefield Road Industrial Estate, Loanhead, Midlothian, EH20 9SY
<b>EMAIL ADDRESS:</b>	<a href="mailto:admin@aocarchaeology.com">admin@aocarchaeology.com</a>
<b>ARCHIVE LOCATION</b> (intended/deposited)	Archive to be deposited in NMRS





**AOC Archaeology Group**, Edgefield Industrial Estate, Edgefield Road, Loanhead EH20 9SY  
tel: 0131 440 3593 | fax: 0131 440 3422 | e-mail: [admin@aocarchaeology.com](mailto:admin@aocarchaeology.com)

[www.aocarchaeology.com](http://www.aocarchaeology.com)