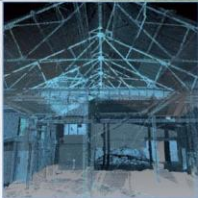


South East Ayr, Phase 1 Corton, Areas B & E Archaeological Evaluation: Data Structure Report

OASIS No. aocarcha1- 132655

AOC 22156

22nd August 2012



South-East Ayr, Phase 1 Corton, Areas B and E: Evaluation Data Structure Report

On Behalf of: Geddes Consulting
The Quadrant
17 Bernard Street
Leith
Edinburgh
EH6 6PW

National Grid Reference (NGR): NS 351 181

Planning Application No: 07/001795/OUT

AOC Project No: 22156

OASIS Number aocarcha1 -

Prepared by: Martin Cook & Kevin Paton

Illustration by: Stefan Sagrott

Date of Fieldwork: 6th to 10th August 2012

Date of Report: 22nd August 2012

This document has been prepared in accordance with AOC standard operating procedures.

Author: Martin Cook

Date: 22nd August 2012

Approved by: John Gooder

Date: 22nd August 2012

Draft Report Stage:

Date: 22nd August 2012

Enquiries to: AOC Archaeology Group
Edgefield Industrial Estate
Edgefield Road
Loanhead
EH20 9SY

Tel. 0131 440 3593
Fax. 0131 440 3422
e-mail. admin@aocarchaeology.com



www.aocarchaeology.com

Contents

| | Page |
|---|------|
| List of illustrations | 3 |
| Plates..... | 3 |
| List of appendices..... | 3 |
| Abstract..... | 4 |
| 1 INTRODUCTION | 5 |
| 2 OBJECTIVES | 6 |
| 3 METHOD | 6 |
| 4 RESULTS | 7 |
| 5 DISCUSSION | 9 |
| 6 CONCLUSION AND RECOMMENDATIONS..... | 9 |
| 7 REFERENCES | 9 |
| APPENDIX 1: TRENCH SUMMARIES | 12 |
| APPENDIX 2: PHOTOGRAPHIC REGISTER | 23 |
| APPENDIX 3: CONTEXT REGISTER | 24 |
| APPENDIX 4: SAMPLE REGISTER | 25 |
| APPENDIX 5: SMALL FINDS REGISTER | 25 |
| APPENDIX 6: DRAWING REGISTER | 25 |
| APPENDIX 7: 'DISCOVERY AND EXCAVATION IN SCOTLAND' REPORT | 26 |

List of illustrations

| | |
|----------|------------------|
| Figure 1 | Site Location |
| Figure 2 | Trench Locations |
| Figure 3 | Plan and section |

Plates

| | |
|---------|--|
| Plate 1 | Plate 1 General working shot of site |
| Plate 2 | Plate 2 Post-excavation shot of feature [007] |
| Plate 3 | Plate 3 Detail of stripping around feature [007] |

List of appendices

| | |
|------------|---|
| Appendix 1 | Trench Summaries |
| Appendix 2 | Photographic Register |
| Appendix 3 | Context Register |
| Appendix 4 | Sample Register |
| Appendix 5 | Small Find Register |
| Appendix 6 | Drawing Register |
| Appendix 7 | <i>'Discovery and Excavation in Scotland'</i> Entry |

Abstract

AOC Archaeology Group was commissioned by Geddes Consulting, on behalf of their client LxB Retail, to undertake a phased programme of archaeological works at Corton, South East Ayr (Planning Ref 07/001795/OUT). The 'B' and 'E' development areas totalled approximately 17.4 ha of agricultural land.

Fifty-three linear trenches and a box trench totalling 9492 m² were excavated with the Area B and E land parcels. Generally, these areas were archaeologically sterile; however, two discrete features were identified and fully excavated. A single sherd of Scottish Post-Medieval Reduced Ware occurred as a topsoil find.

1 INTRODUCTION

1.1 Project Background

- 1.1.1 AOC Archaeology Group was commissioned by Geddes Consulting, on behalf of their client, to undertake a phased programme of archaeological works including evaluation by trial trenching and historic building recording prior to the construction of new residential development, Corton, South East Ayr, South Ayrshire (Planning Ref 07/001795/OUT). The proposed development lies within the administrative area of South Ayrshire Council, which is advised on archaeological matters by the West of Scotland Archaeology Service (WoSAS). A programme of archaeological works had been specified by WoSAS in keeping with the policies outlined in *Scottish Planning Policy* (2010) and *PAN 2/2011 Planning and Archaeology* (2011) in order to record the extent and significance of any archaeological remains which may be present within the development area.

1.2 Site Location

- 1.2.1 The Phase 1 Corton development area lies on the south eastern edge of the town of Ayr, South Ayrshire and presently comprises open farmland (centred NGR NS 351 181). The development area is approximately triangular in plan with the A77 forming the western boundary of the site. The southern extent is marked by an unclassified road which leads to both Laigh Corton farm and High Corton farm. The remaining north-eastern boundary to the site is marked by local railway line extending south from Ayr town centre.

- 1.2.2. The Phase 1 'B' and 'E' development areas total 17.4 ha of farm land. This report presents the results of the archaeological evaluation of these two land parcels. The High Glengall Farm (Area E) Level 1 historic building recording will be subject to a separate report.

1.3 Archaeological background

- 1.3.1 The Planning Application for South East Ayr was approved at Committee, subject to a number of conditions. Condition no 57 relates to Archaeology:

'That the developer shall submit at the first formal application for each phase, for the approval of the Planning Authority, an archaeological mitigation strategy. Thereafter, the developer shall ensure that the approved strategy is fully implemented, that all significant archaeological remains are preserved in situ as may be required by the planning authority, or that any necessary recording and recovery of archaeological resources within the development site is undertaken to the satisfaction of the Planning Authority in agreement with the West of Scotland Archaeology Service (WoSAS).'

- 1.3.2 The Planning Application was accompanied by an Environmental Statement, which included a Chapter on Cultural Heritage, prepared by Headland Archaeology Ltd in 2004. No cultural heritage sites with any formal designations are contained within the application site. The assessment identified few known cultural heritage sites within the site: mainly comprising Early Modern farmsteads; a section of Early Modern road/track and a short section of a possible Roman road; all classified as of Local Importance or of uncertain provenance. There is potential, however, for as yet unidentified archaeological sites and features to survive within the development area as subsurface remains and that is the focus for the archaeological site investigations.

- 1.3.3 Headland Archaeology also prepared '*A Strategic Plan for Archaeological Site Investigations*' (Headland Sep 2010) which was approved by WoSAS. This provided an overall framework for the approach to site investigations for the full application site. Headland also prepared a '*Written Scheme of Archaeological Investigation*' (Sep 2010) which was approved by WoSAS. This provided specific archaeological proposals for Area A of Corton Phase 1.
- 1.3.4 In late 2010 Headland Archaeology undertook an evaluation of the Corton Phase 1 Area A (Headland, Dec 2010). The evaluation uncovered suspected archaeological features in ten of the 73 trenches opened. These features comprised ditches, pits and postholes though the lack of finds made dating such features problematic. However, on the basis of the evaluation findings an area some 54 m by 43 m was stripped and investigated further. The area strip revealed settlement remains in the form of clusters of postholes, hearths and curvilinear ditches with at least three possible structures identified. Prehistoric pottery sherds and a pitchstone bladelet recovered from a posthole suggest that these are the remains of early prehistoric roundhouses, potentially Late Neolithic/Early Bronze Age. Given the presence of such a prehistoric settlement within Area A it is possible that contemporary associated prehistoric remains may be located within the adjacent fields.
- 1.3.5 The RCAHMS and the local Sites and Monuments Records do not list any other archaeological sites within the development landtake. However, given the identification of previously unknown prehistoric archaeological features in Area A, there is a possibility of finding more in the remaining development phases.

2 OBJECTIVES

- 2.1 The objectives of the archaeological works were:
- i) to determine and assess the character, extent, condition, quality, date and significance of any archaeological remains within the proposed development area (Phase 1 Areas B and E) through evaluation trenching (specifically across the footprint of the new build and any associated areas of disturbance) totalling a 5% sample of the development area;
 - ii) should significant archaeological deposits be discovered, to prepare a mitigation strategy compliant with *Scottish Planning Policy* (Scottish Government 2010) and *Planning and Archaeology 2/2011* (Scottish Government 2011).

3 METHOD

- 3.1 The *Written Scheme of Investigation* (AOC 2012) proposed the excavation of trenches equating to a 5% sample of the development area (Phase 1 Areas B and E). The site covered approximately 17.4 ha resulting in evaluation trenching with a minimum total basal area of 8700 m². The trenches were randomly distributed across the development, though in the field trenching was adjusted to take account of topography and local ground conditions.

- 3.1.1 Due to the identification of possibly significant archaeological features, and on the request of WoSAS (and in accordance with the Written Scheme of Investigation Section 4.1.1) an additional 792 m² was excavated (combination of linear trenching and box trench) resulting in a total sample of 9492 m².
- 3.3 All trenches were excavated with a 13 tonne tracked excavator using a 2.0 m wide ditching bucket. The trench details are summarised in Appendix 1. Machine excavation was conducted in shallow units/spits through topsoil/overburden to the upper surface of the underlying geological deposits. All spoil was scanned by metal detector to recover any unstratified finds. The evaluation trial trenching was undertaken according to AOC Archaeology Group's standard operating procedures as detailed within the *Written Scheme of Investigation* (AOC 2012).

4 RESULTS

- 4.1 The works were conducted between 6th and 10th August 2012. The weather conditions during the evaluation were clear and dry. Overall archaeological visibility was good.
- 4.2 At the time of the evaluation the land was being used as pasture, although had obviously been 'improved' in the past by ploughing and insertion of field drains. The soil profile across the development comprised a thin layer of topsoil between 0.30 m and 0.60 m in depth, depending on the topography, overlying a combination of clay and silt. Ceramic field drains were noted across the majority of the site, although very few rubble drains were identified. The paucity of rubble drains perhaps suggesting that land improvement within this land parcel came relatively late
- 4.3 The overwhelming majority of the proposed development area was sterile of archaeological features. Plough scars were identified within the natural subsoil across the site. It appeared evident that any prior prehistoric or historic activity within the development area would have been severely compromised by horizontal truncation deriving from agricultural ploughing.
- 4.4 Two features, a possible hearth [007] and adjacent possible post-hole [009] were identified in Trench 27, on a flat area, between a south-facing and a north-facing slope (Figures 2 & 3). These two features were fully excavated and sampled. The largest and most prominent feature [007] comprised a sub-circular hearth pit with shallow sides running in to a rounded base. Measuring 1.08 m by 0.94 m by 0.05 m in depth, the pit was filled by a single context [008], consisting an orange brown silt with inclusions of charcoal and burnt clay. Feature [009] comprised a possible post-hole, sub-circular in plan, with very shallow sides running into a flat base. Measuring 0.24 m by 0.16 m by 0.04 m in depth, the feature was filled by a single deposit of brown silt [010] with occasional charcoal flecks.
- 4.5 On the request of the West of Scotland Archaeology Service, and keeping with the remit of the Written Scheme of Investigation (AOC 2012 Section 4.1.1), additional trenching was undertaken in an attempt to clearly expose and define the full lateral extent of any suite of archaeology present. A 20 m by 20 m box trench was excavated around the features, and additional ancillary linear trenching was opened up around the box trench, but no further archaeological features were identified.



Plate 1 General working shot of site



Plate 2 Post-excavation shot of feature [007]

- 4.6 No other significant archaeological features were identified by the evaluation.
- 4.7 A single body sherd of Scottish Post-Medieval Reduced Ware (late 17th - early 18th century) (George Haggarty pers comm.) was found in the Trench 12 topsoil.



Plate 3 Detail of box trench stripping around feature [007]

5 DISCUSSION

- 5.1 Of the two identified features, hearth [007] is clearly anthropic in character. The possible posthole [009] was extremely shallow in nature and may represent nothing more than the infill of a variation in the surface of the natural subsoil or a stone drag. That said it was clearly evident that considerable erosion of the subsoil surface by modern ploughing regimes had occurred, thus compromising the survival of the uppermost part of any negative feature (or entire feature) present. Most telling is the location of post-hole [009], just 3.5 m from hearth [007], which is probably more that coincidence with both features perhaps representing the vestigial remnants of a post-built structure with associated hearth. Unfortunately no associated artefactual material was recovered to provide either a date or assist in the interpretation of a specific function for the features.

6 CONCLUSION AND RECOMMENDATIONS

- 6.1 The evaluation has identified these areas as generally archaeologically sterile. Two adjacent features in Trench 27 were excavated and recorded. The other evaluation trenches yielded negative results.
- 6.2 No further on-site works within Areas B and E are considered necessary. This recommendation will require confirmation by WoSAS on behalf of the planning authority. Following a site monitoring visits by the WoSAS case officer (Mr McBrien) it was indicated that post-excavation analyses (soil processing and radiocarbon date) will be required on soil samples recovered from hearth [007].

7 REFERENCES

AOC Archaeology 2012 *South East Ayr, Phase 1: Corton Areas B, C, D and E: Archaeological Works Written Scheme of Investigation* AOC Archaeology Client Report

Headland Archaeology 2010 '*Strategic Plan for Archaeological Site Investigations*' (Sep 2010) unpublished client report

Headland Archaeology 2010 '*Corton, Area A Evaluation and Strip, Map & Record Excavation, Interim Report*' (Dec 2010) unpublished client report

Scottish Government 2010 *Scottish Planning Policy*.

Scottish Government 2011 *2011 Planning and Archaeology*.

.

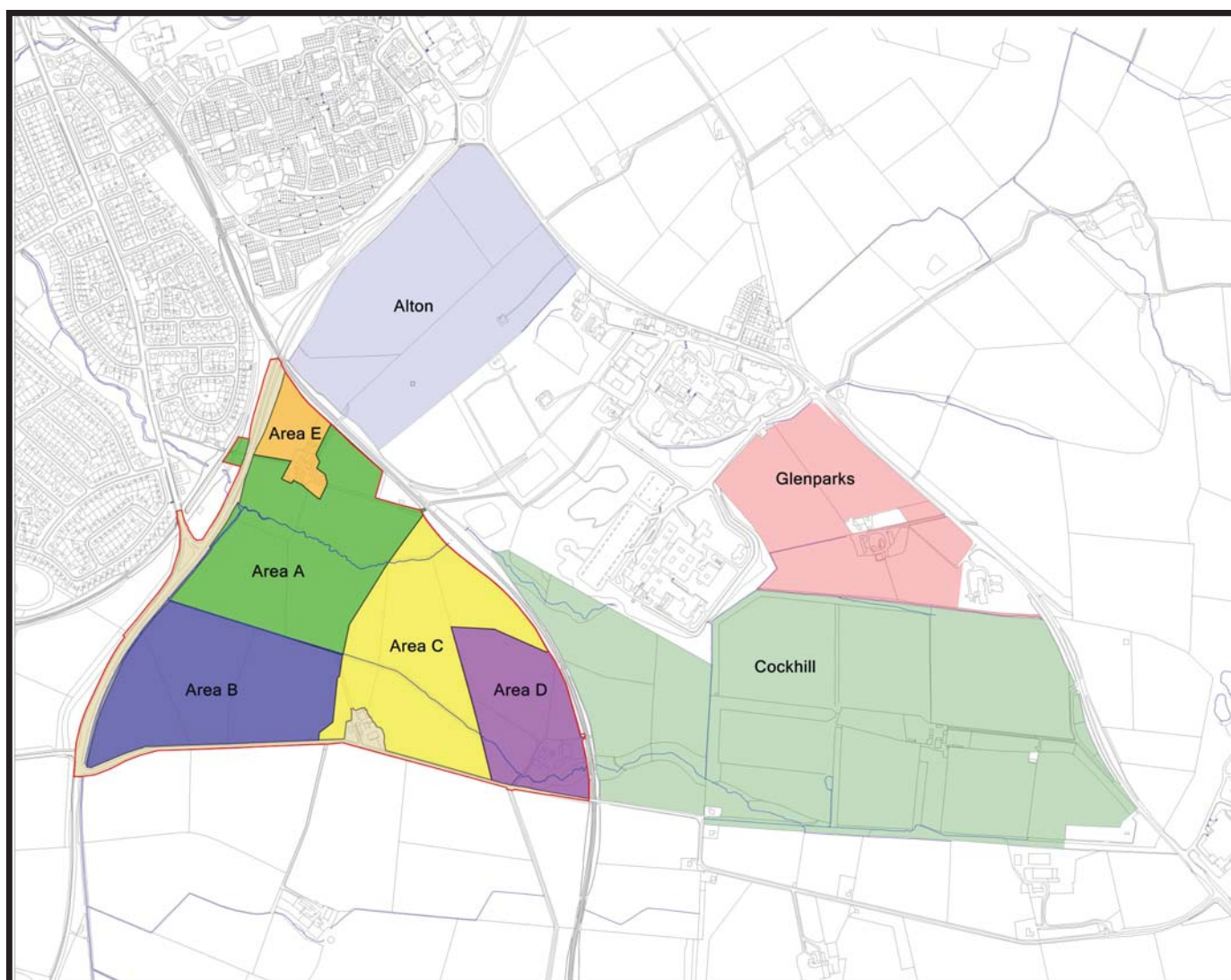
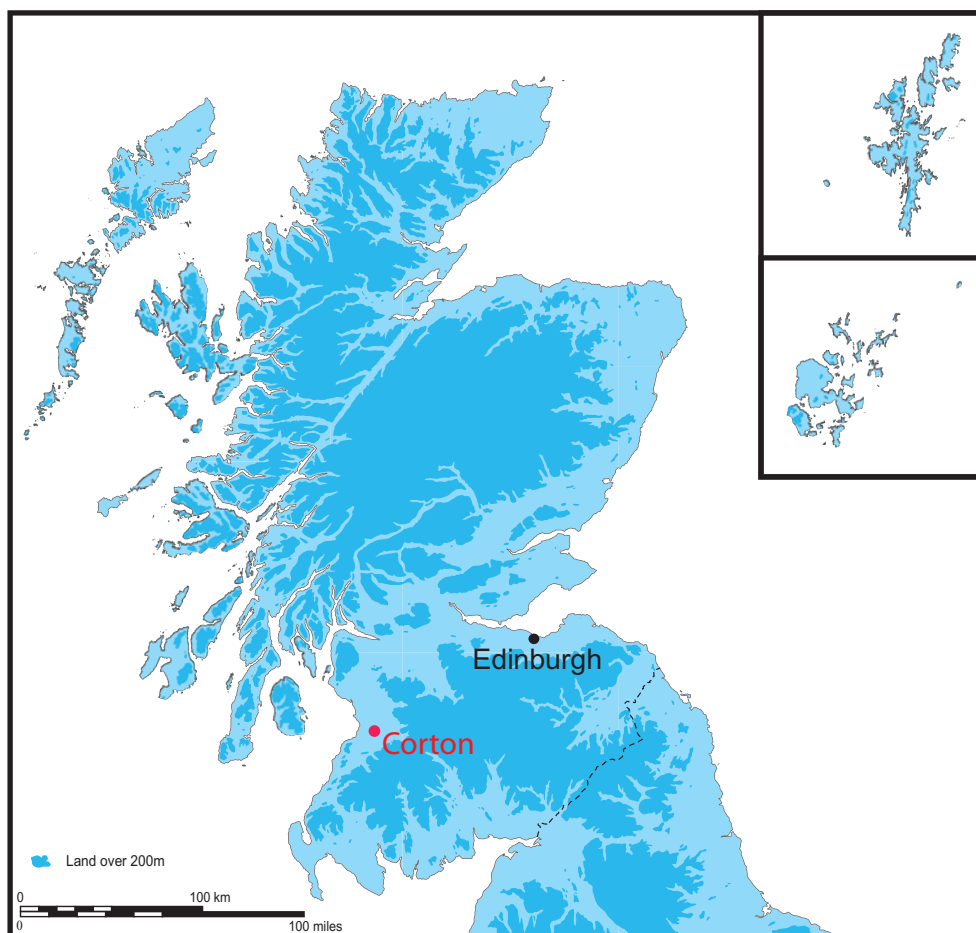


Figure 1: Location of the site at Corton, South Ayrshire

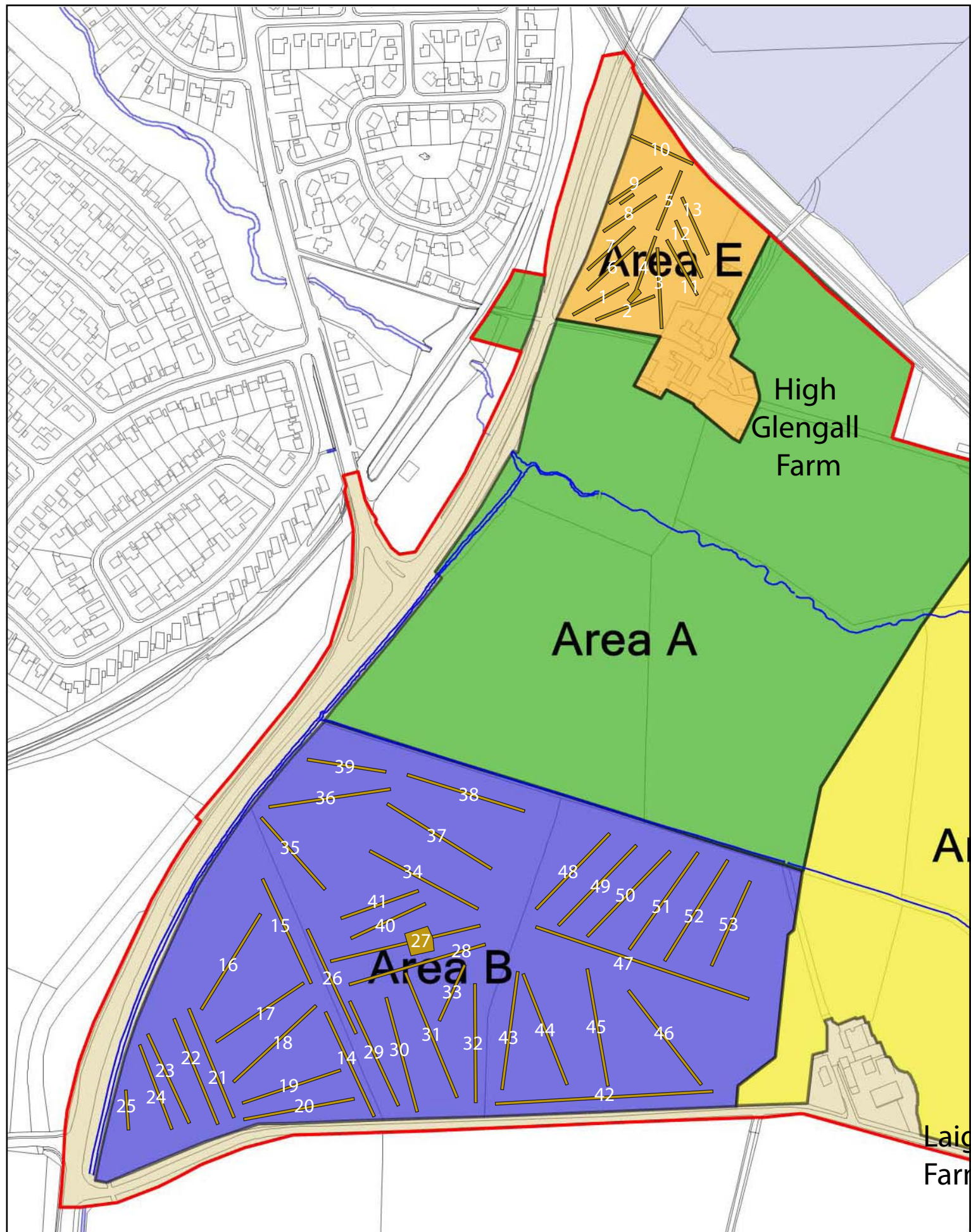
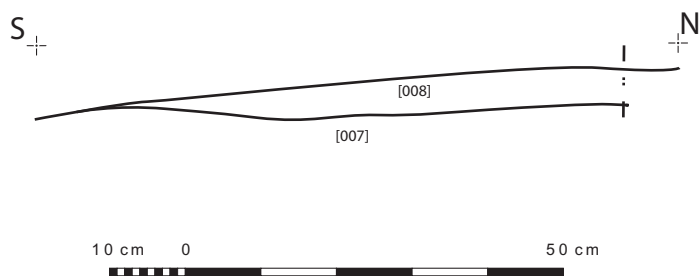
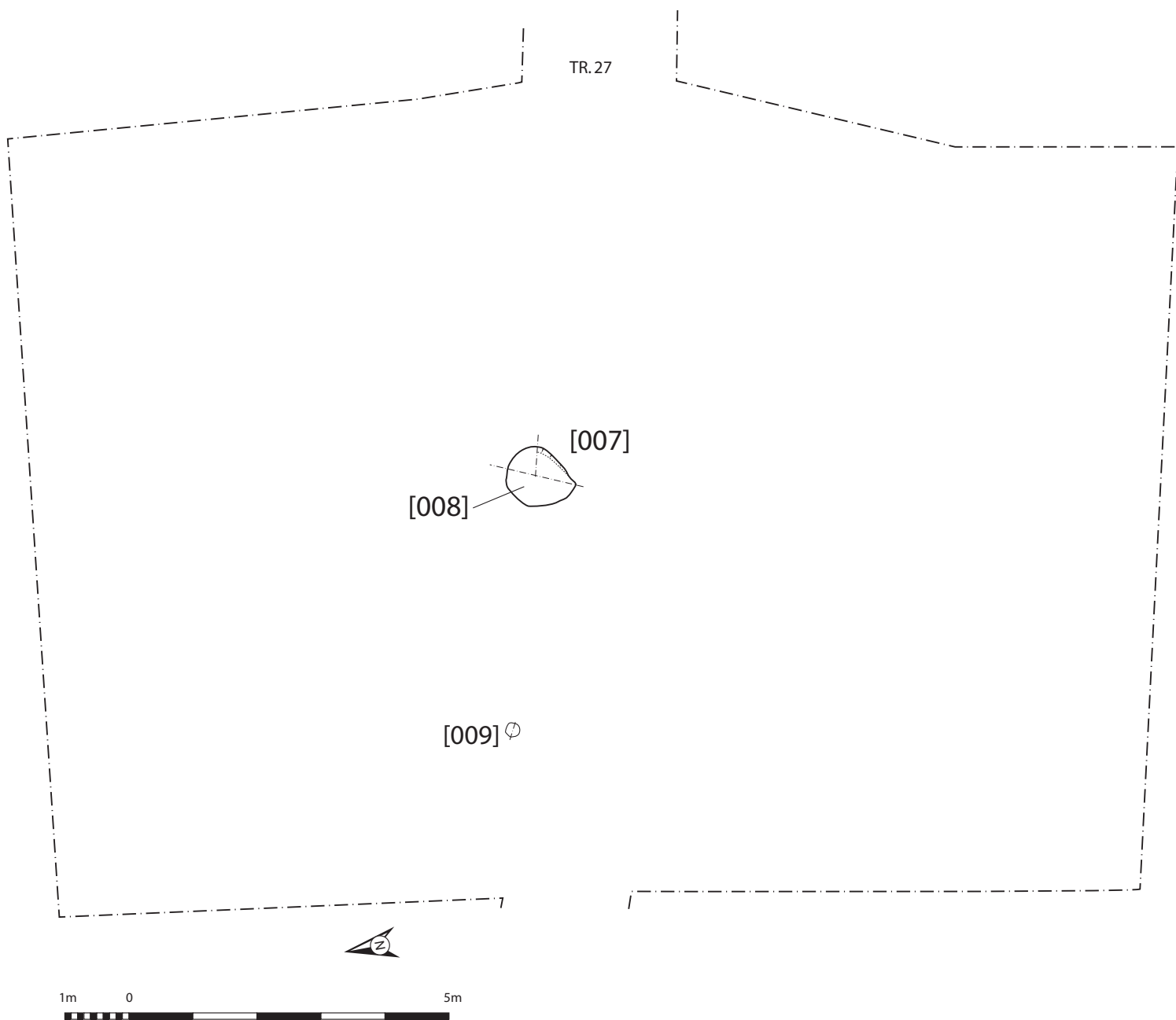


Figure 2: Location of Trial Trenches at Corton



Figures 3 & 4: location plan and section of Feature [007]

South East Ayr, Phase 1 Corton Areas B & E: Evaluation Data Structure Report

Section 2: Appendices

APPENDIX 1: TRENCH SUMMARIES

Trench 1

| | |
|----------------------|-------------------------------|
| Dimensions | 54 m by 2.0 m |
| Orientation | SW-NE |
| Depth of Topsoil | 0.25 m to 0.60 m |
| Significant Features | None |
| Modern Features | Ceramic drains aligned N-S, |
| Subsoil | Clay |
| Finds | Modern ceramic (not retained) |

Trench 2

| | |
|----------------------|-------------------------------|
| Dimensions | 52 m by 2.0 m |
| Orientation | SW-NE |
| Depth of Topsoil | 0.25 m to 0.77 m |
| Significant Features | None |
| Modern Features | Ceramic drains aligned N-S |
| Subsoil | Clay |
| Finds | Modern ceramic (not retained) |

Trench 3

| | |
|----------------------|-------------------------------|
| Dimensions | 52 m by 2.0 m |
| Orientation | N-S |
| Depth of Topsoil | 0.25 m to 0.60 m |
| Significant Features | None |
| Modern Features | Ceramic drains aligned E-W, |
| Subsoil | Clay |
| Finds | Modern ceramic (not retained) |

Trench 4

| | |
|----------------------|--|
| Dimensions | 53 m by 2.0 m |
| Orientation | SSW-NNE |
| Depth of Topsoil | 0.40 m to 0.70 m |
| Significant Features | None |
| Modern Features | Ceramic drain aligned E-W and rubble drain aligned N-S |
| Subsoil | Clay |
| Finds | Modern ceramic (not retained) |

Trench 4a

| | |
|----------------------|-------------------------------|
| Dimensions | 9 m by 2.0 m |
| Orientation | SW-NE |
| Depth of Topsoil | 0.44 m to 0.50 m |
| Significant Features | None |
| Modern Features | Ceramic and ceramic drains |
| Subsoil | Clay |
| Finds | Modern ceramic (not retained) |

Trench 5

| | |
|----------------------|-------------------------------|
| Dimensions | 53 m by 2.0 m |
| Orientation | SSW-NNE |
| Depth of Topsoil | 0.20 m to 0.46 m |
| Significant Features | None |
| Modern Features | Ceramic drains |
| Subsoil | Clay |
| Finds | Modern ceramic (not retained) |

Trench 6

| | |
|----------------------|-------------------------------|
| Dimensions | 51 m by 2.0 m |
| Orientation | SW-NE |
| Depth of Topsoil | 0.40 m average |
| Significant Features | None |
| Modern Features | Ceramic drains |
| Subsoil | Clay |
| Finds | Modern ceramic (not retained) |

Trench 7

| | |
|----------------------|-------------------------------|
| Dimensions | 50 m by 2.0 m |
| Orientation | SW-NE |
| Depth of Topsoil | 0.40 m average |
| Significant Features | None |
| Modern Features | Ceramic drains |
| Subsoil | Clay |
| Finds | Modern ceramic (not retained) |

Trench 8

| | |
|----------------------|-------------------------------|
| Dimensions | 53 m by 2.0 m |
| Orientation | SW-NE |
| Depth of Topsoil | 0.35 m average |
| Significant Features | None |
| Modern Features | Ceramic drains |
| Subsoil | Clay |
| Finds | Modern ceramic (not retained) |

Trench 9

| | |
|----------------------|-----------------------------------|
| Dimensions | 54 m by 2.0 m |
| Orientation | SW-NE |
| Depth of Topsoil | 0.50 m to 0.70 m |
| Significant Features | None |
| Modern Features | Ceramic drains and field boundary |
| Subsoil | Clay |
| Finds | Modern ceramic (not retained) |

Trench 9a

| | |
|----------------------|-------------------------------|
| Dimensions | 10 m by 2.0 m |
| Orientation | SW-NE |
| Depth of Topsoil | 0.50 m average |
| Significant Features | None |
| Modern Features | Ceramic drains |
| Subsoil | Clay |
| Finds | Modern ceramic (not retained) |

Trench 10

| | |
|----------------------|-------------------------------|
| Dimensions | 52 m by 2.0 m |
| Orientation | NW-SE |
| Depth of Topsoil | 0.30 m to 0.65 m |
| Significant Features | None |
| Modern Features | Ceramic drains |
| Subsoil | Clay |
| Finds | Modern ceramic (not retained) |

Trench 11

| | |
|----------------------|-------------------------------|
| Dimensions | 52 m by 2.0 m |
| Orientation | N-S |
| Depth of Topsoil | 0.32 m to 0.60 m |
| Significant Features | None |
| Modern Features | Ceramic drains |
| Subsoil | Clay |
| Finds | Modern ceramic (not retained) |

Trench 12

| | |
|----------------------|---|
| Dimensions | 54 m by 2.0 m |
| Orientation | N-S |
| Depth of Topsoil | 0.30 m to 0.40 m |
| Significant Features | None |
| Modern Features | Ceramic drains |
| Subsoil | Clay |
| Finds | Scottish Post-Medieval Reduced Ware (late 17 th - early 18 th century), body sherd measuring 32 mm by 25 mm |

Trench 13

| | |
|----------------------|-------------------------------|
| Dimensions | 51 m by 2.0 m |
| Orientation | N-S |
| Depth of Topsoil | 0.30 m to 0.40 m |
| Significant Features | None |
| Modern Features | Ceramic drains |
| Subsoil | Clay |
| Finds | Modern ceramic (not retained) |

Trench 14

| | |
|------------|----------------|
| Dimensions | 100 m by 2.0 m |
|------------|----------------|

| | |
|----------------------|-------------------------------|
| Orientation | N-S |
| Depth of Topsoil | 0.30 m average |
| Significant Features | None |
| Modern Features | Ceramic drains |
| Subsoil | Clay |
| Finds | Modern ceramic (not retained) |

Trench 15

| | |
|----------------------|-------------------------------|
| Dimensions | 100 m by 2.0 m |
| Orientation | N-S |
| Depth of Topsoil | 0.35 m to 0.50 m |
| Significant Features | None |
| Modern Features | Ceramic drains |
| Subsoil | Clay |
| Finds | Modern ceramic (not retained) |

Trench 16

| | |
|----------------------|-------------------------------|
| Dimensions | 100 m by 2.0 m |
| Orientation | NE-SW |
| Depth of Topsoil | 0.25 m average |
| Significant Features | None |
| Modern Features | Ceramic drains |
| Subsoil | Clay |
| Finds | Modern ceramic (not retained) |

Trench 17

| | |
|----------------------|-------------------------------|
| Dimensions | 100 m by 2.0 m |
| Orientation | NE-SW |
| Depth of Topsoil | 0.30 m average |
| Significant Features | None |
| Modern Features | Ceramic drains |
| Subsoil | Clay |
| Finds | Modern ceramic (not retained) |

Trench 18

| | |
|----------------------|-------------------------------|
| Dimensions | 100 m by 2.0 m |
| Orientation | SW-NE |
| Depth of Topsoil | 0.25 m |
| Significant Features | None |
| Modern Features | Ceramic drains |
| Subsoil | Clay |
| Finds | Modern ceramic (not retained) |

Trench 19

| | |
|----------------------|------------------|
| Dimensions | 100 m by 2.0 m |
| Orientation | NE-SW |
| Depth of Topsoil | 0.28 m to 0.50 m |
| Significant Features | None |

| | |
|-----------------|-------------------------------|
| Modern Features | Ceramic drains |
| Subsoil | Clay |
| Finds | Modern ceramic (not retained) |

Trench 20

| | |
|----------------------|-------------------------------|
| Dimensions | 100 m by 2.0 m |
| Orientation | NE-SW |
| Depth of Topsoil | 0.25 m to 0.50 m |
| Significant Features | None |
| Modern Features | Ceramic drains |
| Subsoil | Clay |
| Finds | Modern ceramic (not retained) |

Trench 21

| | |
|----------------------|-------------------------------|
| Dimensions | 100 m by 2.0 m |
| Orientation | NW-SE |
| Depth of Topsoil | 0.35 m |
| Significant Features | None |
| Modern Features | Ceramic drains |
| Subsoil | Clay |
| Finds | Modern ceramic (not retained) |

Trench 22

| | |
|----------------------|-------------------------------|
| Dimensions | 100 m by 2.0 m |
| Orientation | NW-SE |
| Depth of Topsoil | 0.25 m to 0.60 m |
| Significant Features | None |
| Modern Features | Ceramic drains |
| Subsoil | Clay |
| Finds | Modern ceramic (not retained) |

Trench 23

| | |
|----------------------|-------------------------------|
| Dimensions | 100 m by 2.0 m |
| Orientation | N-S |
| Depth of Topsoil | 0.40 m |
| Significant Features | None |
| Modern Features | Ceramic drains |
| Subsoil | Clay |
| Finds | Modern ceramic (not retained) |

Trench 24

| | |
|----------------------|-------------------------------|
| Dimensions | 70 m by 2.0 m |
| Orientation | SW-NE |
| Depth of Topsoil | 0.30 m |
| Significant Features | None |
| Modern Features | Ceramic drains |
| Subsoil | Clay |
| Finds | Modern ceramic (not retained) |

Trench 25

| | |
|----------------------|-------------------------------|
| Dimensions | 35 m by 2.0 m |
| Orientation | N-S |
| Depth of Topsoil | 0.30 m |
| Significant Features | None |
| Modern Features | Ceramic drains |
| Subsoil | Clay |
| Finds | Modern ceramic (not retained) |

Trench 26

| | |
|----------------------|-------------------------------|
| Dimensions | 100 m by 2.0 m |
| Orientation | NE-SW |
| Depth of Topsoil | 0.30 m |
| Significant Features | None |
| Modern Features | Ceramic drains |
| Subsoil | Clay |
| Finds | Modern ceramic (not retained) |

Trench 27

| | |
|----------------------|---|
| Dimensions | 130 m by 2.0 m, plus 20 m by 20 m extension |
| Orientation | E-W |
| Depth of Topsoil | 0.30 m |
| Significant Features | Hearth feature [007] and possible post-hole [009] |
| Modern Features | Ceramic drains |
| Subsoil | Clay |
| Finds | Modern ceramic (not retained) |

Trench 28

| | |
|----------------------|-------------------------------|
| Dimensions | 120 m by 2.0 m |
| Orientation | E-W |
| Depth of Topsoil | 0.25 m average |
| Significant Features | None |
| Modern Features | Ceramic drains |
| Subsoil | Clay |
| Finds | Modern ceramic (not retained) |

Trench 29

| | |
|----------------------|-------------------------------|
| Dimensions | 100 m by 2.0 m |
| Orientation | N-S |
| Depth of Topsoil | 0.30 m average |
| Significant Features | None |
| Modern Features | Ceramic drains |
| Subsoil | Clay |
| Finds | Modern ceramic (not retained) |

Trench 30

| | |
|------------|----------------|
| Dimensions | 100 m by 2.0 m |
|------------|----------------|

| | |
|----------------------|-------------------------------|
| Orientation | N-S |
| Depth of Topsoil | 0.35 m average |
| Significant Features | None |
| Modern Features | Ceramic drains |
| Subsoil | Clay |
| Finds | Modern ceramic (not retained) |

Trench 31

| | |
|----------------------|-------------------------------|
| Dimensions | 100 m by 2.0 m |
| Orientation | N-S |
| Depth of Topsoil | 0.25 m to 0.40 m |
| Significant Features | None |
| Modern Features | Ceramic drains |
| Subsoil | Clay |
| Finds | Modern ceramic (not retained) |

Trench 32

| | |
|----------------------|-------------------------------|
| Dimensions | 100 m by 2.0 m |
| Orientation | N-S |
| Depth of Topsoil | 0.25 m to 0.60 m |
| Significant Features | None |
| Modern Features | Ceramic drains |
| Subsoil | Clay |
| Finds | Modern ceramic (not retained) |

Trench 33

| | |
|----------------------|-------------------------------|
| Dimensions | 50 m by 2.0 m |
| Orientation | NE-SW |
| Depth of Topsoil | 0.30 m average |
| Significant Features | None |
| Modern Features | Ceramic drains |
| Subsoil | Clay |
| Finds | Modern ceramic (not retained) |

Trench 34

| | |
|----------------------|-------------------------------|
| Dimensions | 100 m by 2.0 m |
| Orientation | E-W |
| Depth of Topsoil | 0.30 m to 0.40 m |
| Significant Features | None |
| Modern Features | Ceramic drains |
| Subsoil | Clay |
| Finds | Modern ceramic (not retained) |

Trench 35

| | |
|----------------------|------------------|
| Dimensions | 85 m by 2.0 m |
| Orientation | N-S |
| Depth of Topsoil | 0.30 m to 0.50 m |
| Significant Features | None |

| | |
|-----------------|-------------------------------|
| Modern Features | Ceramic drains |
| Subsoil | Clay |
| Finds | Modern ceramic (not retained) |

Trench 36

| | |
|----------------------|-------------------------------|
| Dimensions | 100 m by 2.0 m |
| Orientation | NW-SE |
| Depth of Topsoil | 0.30 m average |
| Significant Features | None |
| Modern Features | Ceramic drains |
| Subsoil | Clay |
| Finds | Modern ceramic (not retained) |

Trench 37

| | |
|----------------------|-------------------------------|
| Dimensions | 100 m by 2.0 m |
| Orientation | N-S |
| Depth of Topsoil | 0.30 m average |
| Significant Features | None |
| Modern Features | Ceramic drains |
| Subsoil | Clay |
| Finds | Modern ceramic (not retained) |

Trench 38

| | |
|----------------------|-------------------------------|
| Dimensions | 100 m by 2.0 m |
| Orientation | N-S |
| Depth of Topsoil | 0.35 m |
| Significant Features | None |
| Modern Features | Ceramic drains |
| Subsoil | Clay |
| Finds | Modern ceramic (not retained) |

Trench 39

| | |
|----------------------|-------------------------------|
| Dimensions | 60 m by 2.0 m |
| Orientation | NW-SE |
| Depth of Topsoil | 0.40 m average |
| Significant Features | None |
| Modern Features | Ceramic drains |
| Subsoil | Clay |
| Finds | Modern ceramic (not retained) |

Trench 40

| | |
|----------------------|-------------------------------|
| Dimensions | 66 m by 2.0 m |
| Orientation | E-W |
| Depth of Topsoil | 0.25 m to 0.60 m |
| Significant Features | None |
| Modern Features | Ceramic drains |
| Subsoil | Clay |
| Finds | Modern ceramic (not retained) |

Trench 41

| | |
|----------------------|-------------------------------|
| Dimensions | 65 m by 2.0 m |
| Orientation | E-W |
| Depth of Topsoil | 0.30 m average |
| Significant Features | None |
| Modern Features | Ceramic drains |
| Subsoil | Clay |
| Finds | Modern ceramic (not retained) |

Trench 42

| | |
|----------------------|-------------------------------|
| Dimensions | 190 m by 2.0 m |
| Orientation | E-W |
| Depth of Topsoil | 0.40 m average |
| Significant Features | None |
| Modern Features | Ceramic drains |
| Subsoil | Clay |
| Finds | Modern ceramic (not retained) |

Trench 43

| | |
|----------------------|-------------------------------|
| Dimensions | 100 m by 2.0 m |
| Orientation | N-S |
| Depth of Topsoil | 0.45 m average |
| Significant Features | None |
| Modern Features | Ceramic drains |
| Subsoil | Clay |
| Finds | Modern ceramic (not retained) |

Trench 44

| | |
|----------------------|-------------------------------|
| Dimensions | 100 m by 2.0 m |
| Orientation | NW-SE |
| Depth of Topsoil | 0.45 m average |
| Significant Features | None |
| Modern Features | Ceramic drains |
| Subsoil | Clay |
| Finds | Modern ceramic (not retained) |

Trench 45

| | |
|----------------------|-------------------------------|
| Dimensions | 100 m by 2.0 m |
| Orientation | NW-SE |
| Depth of Topsoil | 0.30 m to 0.50 m |
| Significant Features | None |
| Modern Features | Ceramic drains |
| Subsoil | Clay |
| Finds | Modern ceramic (not retained) |

Trench 46

| | |
|----------------------|-------------------------------|
| Dimensions | 100 m by 2.0 m |
| Orientation | NW-SE |
| Depth of Topsoil | 0.30 m to 0.50 m |
| Significant Features | None |
| Modern Features | Ceramic drains |
| Subsoil | Clay |
| Finds | Modern ceramic (not retained) |

Trench 47

| | |
|----------------------|-------------------------------|
| Dimensions | 190 m by 2.0 m |
| Orientation | E-W |
| Depth of Topsoil | 0.40 m average |
| Significant Features | None |
| Modern Features | Ceramic drains aligned N-S |
| Subsoil | Clay |
| Finds | Modern ceramic (not retained) |

Trench 48

| | |
|----------------------|-------------------------------|
| Dimensions | 100 m by 2.0 m |
| Orientation | SW-NE |
| Depth of Topsoil | 0.40 m average |
| Significant Features | None |
| Modern Features | Ceramic drains aligned N-S |
| Subsoil | Clay |
| Finds | Modern ceramic (not retained) |

Trench 49

| | |
|----------------------|-------------------------------|
| Dimensions | 100 m by 2.0 m |
| Orientation | SW-NE |
| Depth of Topsoil | 0.40 m average |
| Significant Features | None |
| Modern Features | Ceramic drains aligned N-S |
| Subsoil | Clay |
| Finds | Modern ceramic (not retained) |

Trench 50

| | |
|----------------------|-------------------------------|
| Dimensions | 100 m by 2.0 m |
| Orientation | SW-NE |
| Depth of Topsoil | 0.30 m average |
| Significant Features | None |
| Modern Features | Ceramic drains |
| Subsoil | Clay |
| Finds | Modern ceramic (not retained) |

Trench 51

| | |
|------------------|----------------|
| Dimensions | 100 m by 2.0 m |
| Orientation | SW-NE |
| Depth of Topsoil | 0.30 m average |

| | |
|----------------------|-------------------------------|
| Significant Features | None |
| Modern Features | Ceramic drains |
| Subsoil | Clay |
| Finds | Modern ceramic (not retained) |

Trench 52

| | |
|----------------------|-------------------------------|
| Dimensions | 85 m by 2.0 m |
| Orientation | SW-NE |
| Depth of Topsoil | 0.30 m average |
| Significant Features | None |
| Modern Features | Ceramic drains |
| Subsoil | Clay |
| Finds | Modern ceramic (not retained) |

APPENDIX 2: PHOTOGRAPHIC REGISTER

Black & White Print Film 1

| Frame | Trench | Description | From |
|-------|--------|--|------|
| 1-2 | - | Registration | - |
| 3 | 12 | Post-excavation shot of trench | S |
| 4 | 10 | Post-excavation shot of trench | SE |
| 5 | 9 | Post-excavation shot of trench | NE |
| 6 | 8 | Post-excavation shot of trench | SW |
| 7 | 7 | Post-excavation shot of trench | NE |
| 8 | 5 | Post-excavation shot of trench | SSW |
| 9 | 4 | Post-excavation shot of trench | NNE |
| 10 | 4 | Post-excavation shot of pit | W |
| 11 | 2 | Post-excavation shot of trench | NE |
| 12 | 1 | Post-excavation shot of trench | SW |
| 13 | 9a | Post-excavation shot of trench | SW |
| 14 | 4a | Post-excavation shot of trench | SW |
| 15 | 14 | Post-excavation shot of trench | NW |
| 16 | 18 | Post-excavation shot of trench | N |
| 17 | 20 | Post-excavation shot of trench | W |
| 18 | 21 | Post-excavation shot of trench | S |
| 19 | | General view of trench | |
| 20 | 27 | East-facing section through [007] | E |
| 21-22 | 27 | General view of feature [007] | S |
| 23-24 | 27 | South-facing section through pit [009] | S |

Digital Film 1

| Frame | Trench | Description | From |
|-------|--------|--------------------------------|------|
| 1 | - | Registration | - |
| 2 | 12 | Post-excavation shot of trench | S |
| 3 | 11 | Post-excavation shot of trench | S |
| 4 | 10 | Post-excavation shot of trench | SE |
| 5 | 9 | Post-excavation shot of trench | NE |
| 6 | 8 | Post-excavation shot of trench | SW |
| 7 | 7 | Post-excavation shot of trench | NE |
| 8 | 5 | Post-excavation shot of trench | SSW |
| 9 | 4 | Post-excavation shot of trench | NNE |
| 10 | 4 | Post-excavation shot of pit | W |
| 11 | 2 | Post-excavation shot of trench | NE |
| 12 | 1 | Post-excavation shot of trench | SW |

| | | | |
|----|----|--|----|
| 13 | 9a | Post-excavation shot of trench | SW |
| 14 | 4a | Post-excavation shot of trench | SW |
| 15 | 14 | Post-excavation shot of trench | NW |
| 16 | 18 | Post-excavation shot of trench | N |
| 17 | 20 | Post-excavation shot of trench | W |
| 18 | 21 | Post-excavation shot of trench | S |
| 19 | | General view of trench | |
| 20 | 27 | East-facing section through [007] | E |
| 21 | 27 | General view of feature [007] | S |
| 22 | 27 | South-facing section through pit [009] | S |

APPENDIX 3: CONTEXT REGISTER

| Context | Description |
|---------|---|
| 001 | Cut of natural feature |
| 002 | Fill of cut [001] |
| 003 | Cut of drain |
| 004 | Fill of field drain [003] |
| 005 | Natural feature |
| 006 | Fill of [005] |
| 007 | Cut of sub-circular feature, with shallow sides running in to a rounded base. Measuring 1.08 m by 0.94 m by 0.05 m in depth. Filled by [008]. |
| 008 | Fill of cut [007], comprising orange/brown silt, with inclusions of charcoal and burnt clay. |
| 009 | Cut of possible post-hole, sub-circular in plan, with shallow sides running in to a flat base. Measuring 0.24 m by 0.16 m by 0.04 m in depth. |
| 010 | Fill of cut [009] comprising brown silt with possible charcoal flecks. |

APPENDIX 4: SAMPLE REGISTER

| Context | Tubs | Description |
|---------|------|----------------------------|
| 008 | 1 | Fill of hearth feature |
| 010 | 1 | Fill of possible post-hole |

APPENDIX 5: SMALL FINDS REGISTER

| Small Find | Context | Description |
|------------|--------------------|---|
| 1 | Tr.12 (unstrat) | Post-med ceramic (green glaze body sherd) x 1 |

APPENDIX 6: DRAWING REGISTER

| Drawing Number | Scale | Description |
|----------------|-------|---|
| 1 | 1:10 | E-facing section through hearth feature [007] |
| 2 | 1:10 | Plan of features [007] and [009] Trench 27 |
| 3 | 1:10 | E-facing section through [009] |

APPENDIX 7: 'DISCOVERY AND EXCAVATION IN SCOTLAND' REPORT

| | |
|---|--|
| LOCAL AUTHORITY: | South Ayrshire Council |
| PROJECT TITLE/SITE NAME: | South East Ayr, Phase 1 Corton Areas B and E |
| PROJECT CODE: | AOC 22156 |
| PARISH: | Ayr |
| NAME OF CONTRIBUTOR: | Martin Cook and Kevin Paton |
| NAME OF ORGANISATION: | AOC Archaeology Group |
| TYPE(S) OF PROJECT: | Archaeological Evaluation |
| NMRS NO(S): | None |
| SITE/MONUMENT TYPE(S): | Possible hearth feature |
| SIGNIFICANT FINDS: | Single sherd of post-medieval ceramic |
| NGR (2 letters, 6 figures) | NS 351 181 |
| START DATE (this season) | 6 th August 2012 |
| END DATE (this season) | 10 th August 2012 |
| PREVIOUS WORK (incl. DES ref.) | None |
| MAIN (NARRATIVE) DESCRIPTION: (May include information from other fields) | <p>An evaluation was undertaken prior to the development of land at Corton, South Ayr. The development area consisted of approximately 17.4 ha of agricultural land.</p> <p>Fifty-two trenches totalling 9492 m² metres were excavated. Generally, the areas were sterile of archaeological features. However, two adjacent features, a possible hearth and post-hole were identified within one evaluation trench. Excavation of a 400 m² box trench centred on the features and ancillary linear trenching in the immediate area failed in identifying further archaeological features. Elsewhere a single Scottish Post-Medieval Reduced Ware sherd was found in topsoil.</p> |
| PROPOSED FUTURE WORK: | To be confirmed |
| CAPTION(S) FOR ILLUSTRS: | n/a |
| SPONSOR OR FUNDING BODY: | LxB Retail |
| ADDRESS OF MAIN CONTRIBUTOR: | AOC Archaeology Group; Edgefield Road Industrial Estate; Loanhead, Midlothian, EH20 9SY |
| EMAIL ADDRESS: | admin@aocarchaeology.com |
| ARCHIVE LOCATION | Archive to be deposited in NMRS |



AOC Archaeology Group, Edgefield Industrial Estate, Edgefield Road, Loanhead EH20 9SY
tel: 0131 440 3593 | fax: 0131 440 3422 | e-mail: edinburgh@aocarchaeology.com

www.aocarchaeology.com