

NOTES

1. Do not scale from this drawing.
2. The information provided on this drawing about the existing utility services is based on historic records provided by the statutory utilities. The actual position and status of any mains and services must be verified and established on site. This drawing is provided for information only.
3. The information on this drawing is given without obligation or warranty. No liability of any kind whatsoever is accepted by Premier Energy Services Ltd, its agents or servants for any errors or omissions.
4. Services to buildings are not shown but it must be assumed that any existing building is served with live supplies until proven otherwise. Written confirmation that a supply is dead must be obtained from the relevant utility.
5. Cables to street lighting, road signs and illuminated bollards are not shown but must be assumed to exist.
6. The location of any mains and services must be undertaken by hand dug trial holes. The approval of the appropriate utility must be sought before any mechanical plant is used.
7. Underground services must be located in accordance with HSE Guidance note HS (5) 47.
8. Overhead power lines must be dealt with in accordance with HSE Guidance Note GS 6 (Third edition).
9. For clarity existing plant is represented by single lines. Please note, this does not indicate the number of cables, ducts and pipes that may exist in the location indicated.

KEY

REV	CAD	REVISION DETAILS	DATE

Premier Energy Services
 4 THE COURTYARD, PONDITALL FARM, WEST GRINSTEAD,
 HORSHAM, WEST SUSSEX, RH13 8JN
 TEL: 01403 740 240 FAX: 01403 740 250 EMAIL: load@premierenergy.co.uk

PROJECT:

CLIENT:

DRAWING TITLE:

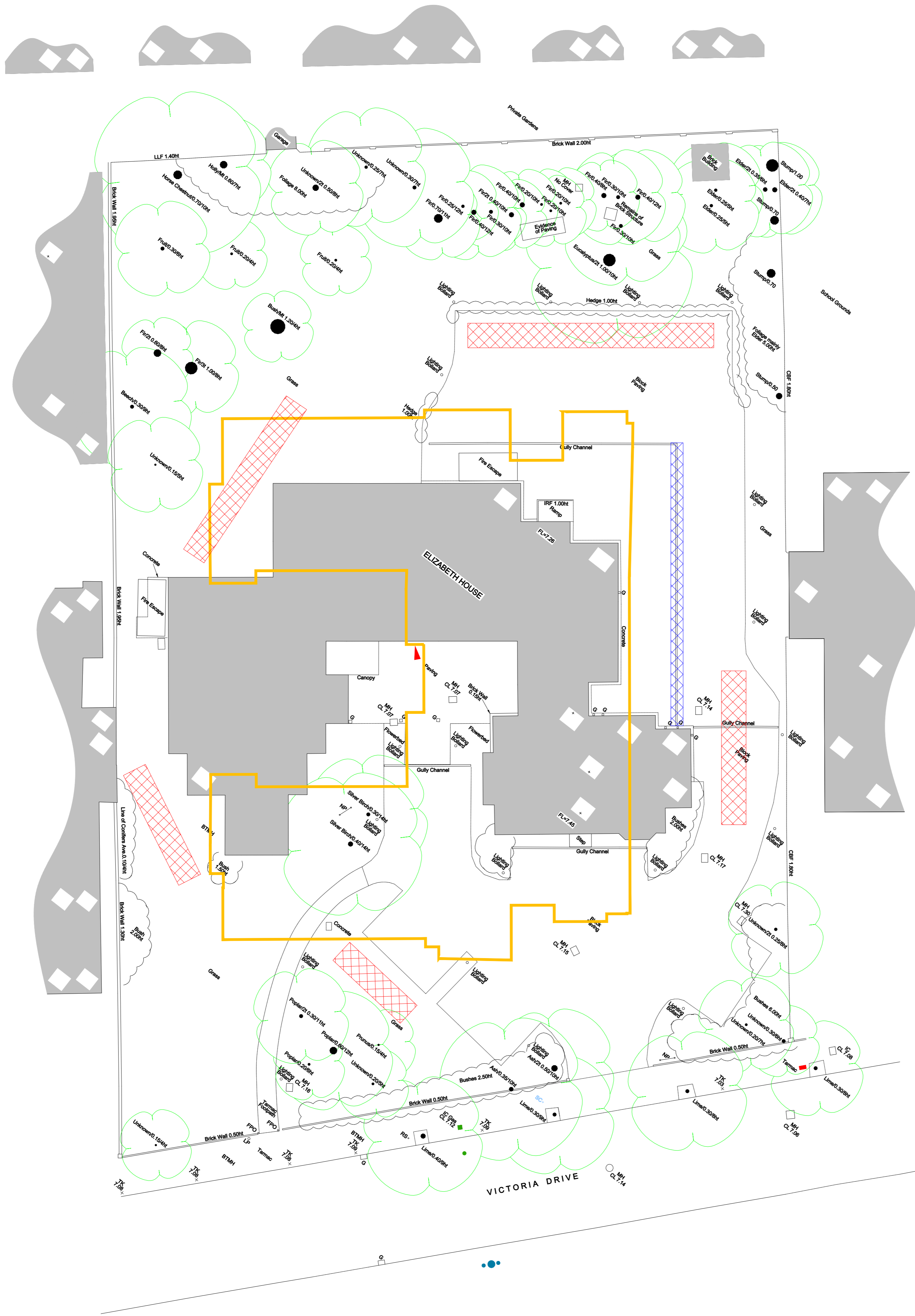
DRAWING STATUS:

DRAWN BY: CHECKED BY: APPROVED BY:

DATE: --/--/200- SCALE: 1:200 @ A0
 DRAWING NUMBER: PES-20????-001 REVISION: -

UTILITY PLANT CONTACT SCHEDULE - EXISTING SERVICES		
UTILITY	ORGANISATION	CONTACT
WATER	Portsmouth Water	Helpdesk 02392 477999 Emergency 0800 111 999
GAS	Transco	Emergency Helpline 0800 917 2468
BT	British Telecom	Dial Before You Dig 0800 917 3993
Electricity	Scottish & Southern	Emergency 0800 096 3766 Helpdesk 02932 624200
CATV	None in Area	

INFORMATION & BASE DATA SCHEDULE		
COMPONENT	SOURCE	REFERENCES
Site Layout	Pentan Partnership	Drawing 2544/FS/01 Dated May 05
Existing Site	Maltby Land Surveys Ltd	Drawing 05/101/05 Dated June 05
Existing Water Network	Portsmouth Water	O.S. Extract Ref SZ93999NW Dated 07.09.05
Existing Gas Network	Transco	O.S. Extract dated 25.08.05
Existing BT Network	BT Maps by E-Mail	BT Ref: KGW12456E & GOM12486U Dated 25.08.05
Existing Electric Network (HV & LV Networks)	Scottish & Southern	Drawing Grid Ref: SZ93029953 Dated 30.08.05
Existing CATV Network	None in area	



- NOTES**
- Do not scale from this drawing.
 - The information provided on this drawing about the existing utility services is based on historic records provided by the statutory utilities. The actual position and status of any mains and services must be verified and established on site. This drawing is provided for information only.
 - The information on this drawing is given without obligation or warranty. No liability of any kind whatsoever is accepted by Premier Energy Services Ltd, its agents or servants for any errors or omissions.
 - Services to buildings are not shown but it must be assumed that any existing building is served with live supplies until proven otherwise. Written confirmation that a supply is dead must be obtained from the relevant utility.
 - Cables to street lighting, road signs and illuminated bollards are not shown but must be assumed to exist.
 - The location of any mains and services must be undertaken by hand dig trial holes. The approval of the appropriate utility must be sought before any mechanical plant is used.
 - Underground services must be located in accordance with HSE Guidance note HS (G) 47.
 - Overhead power lines must be dealt with in accordance with HSE Guidance Note GS 6 (Third edition).
 - For clarity existing plant is represented by single lines. Please note, this does not indicate the number of cables, ducts and pipes that may exist in the location indicated.

KEY

BT SERVICES

- EXISTING BT DUCT/S.
- EXISTING BT OVERHEAD CABLES.
- EXISTING BT CHAMBER.

WATER SERVICES

- EXISTING WATER MAIN.
- WASH OUT.
- WATER VALVE.

LP GAS SERVICES

- EXISTING LP GAS MAIN.
- GAS REDUCER.
- GAS VALVE.
- GAS CAP END.

LOW VOLTAGE ELECTRIC SERVICES

- EXISTING LV ELECTRIC MAIN.
- EXISTING DUCTED LV ELECTRIC MAIN.
- ELECTRIC P.E.

MEDIUM INTERMEDIATE & HIGH PRESSURE GAS SERVICES

NONE ON OR ADJACENT TO SITE.

CATV & COMMS SERVICES - NONE ON OR ADJACENT TO SITE.

NONE ON OR ADJACENT TO SITE.

EXTRA HIGH VOLTAGE ELECTRIC SERVICES

NONE ON OR ADJACENT TO SITE.

HIGH VOLTAGE ELECTRIC SERVICES

NONE ON OR ADJACENT TO SITE.

STREETLIGHT DUCTING

EXISTING LV STREET LIGHTING DUCT ROUTES.

REV	CAD	REVISION DETAILS	DATE

Premier Energy Services

4 THE COURTYARD, PONDTAIL FARM, WEST GRINSTEAD,
HORSHAM, WEST SUSSEX, RH13 8LN.
TEL: 01403 740 240 FAX: 01403 740 250 EMAIL: cad@premierenergy.co.uk

PROJECT:
**ELIZABETH HOUSE
VICTORIA DRIVE
BOGNOR REGIS**

CLIENT:
GYOURY SELF

DRAWING TITLE:
EXISTING SERVICES DRAWING

DRAWING STATUS: **FOR INFORMATION**

DRAWN BY: M.R.W.	CHECKED BY: M.J.N.	APPROVED BY: R.M.
DATE: 21.09.05	SCALE: 1:200 @ A1	
DRAWING NUMBER: PES/245254/001	REVISION: -	

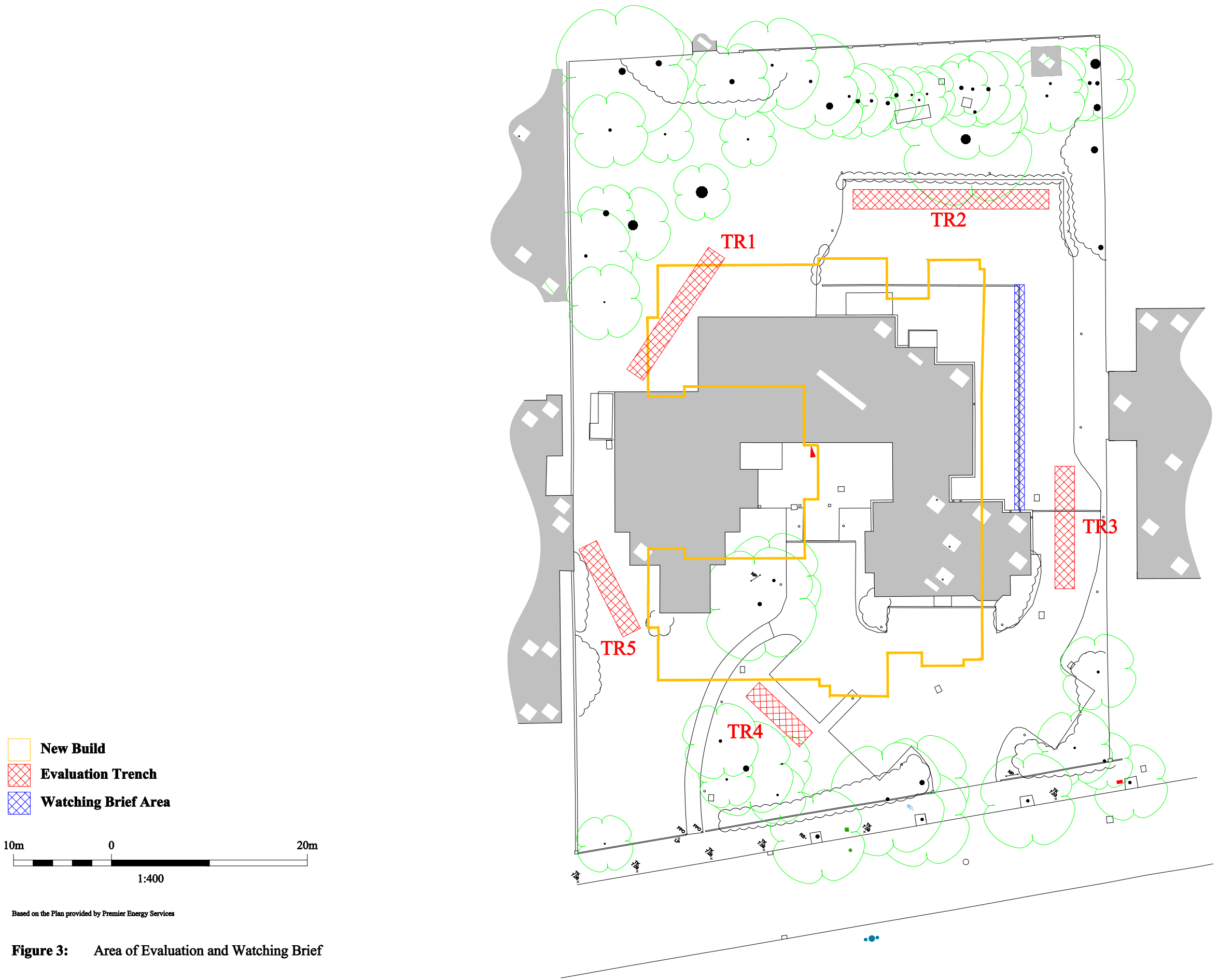
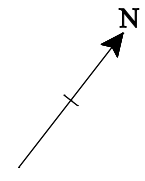


Figure 3: Area of Evaluation and Watching Brief