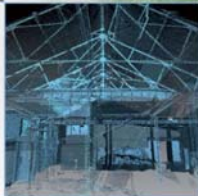


Standhill Farm, Bathgate, West Lothian: Archaeological Evaluation Data Structure Report

AOC Project 22245
Oasis No. aocarcha1-144618
26th February 2013



Standhill Farm, Bathgate, West Lothian: Archaeological Evaluation Data Structure Report

On Behalf of: **Barratt East Scotland**
Telford House
3 Mid New Cultins
Edinburgh
EH11 4DH

National Grid Reference (NGR): **NS 9675 6720**

AOC Project No: **22245**

Prepared by: **Kevin Paton**

Illustration by: **Kevin Paton**

Date of Fieldwork: **18th – 23rd February 2013**

Date of Report: **26th February 2013**

This document has been prepared in accordance with AOC standard operating procedures.

Author: Kevin Paton

Date: 26th February 2013

Approved by: Martin Cook

Date: 27th February 2013

Draft/Final Report Stage: Draft

Date: 27th February 2013

Enquiries to: AOC Archaeology Group
Edgefield Industrial Estate
Edgefield Road
Loanhead
EH20 9SY

Tel. 0131 440 3593
Fax. 0131 440 3422
e-mail. admin@aocarchaeology.com



Contents

	Page
List of Illustrations	3
List of Plates	3
List of Appendices	3
Abstract	4
1 INTRODUCTION	5
1.1 Background	5
1.2 Location	5
1.3 Archaeological Background	5
2 OBJECTIVES	5
3 METHODOLOGY	6
4 RESULTS	7
5 CONCLUSION AND RECOMMENDATIONS	7
6 REFERENCES	8
6.1 Bibliographic references.....	8
6.2 Cartographic references.....	8
APPENDIX 1: Trench Descriptions	10
APPENDIX 2: Photographic Record	23
APPENDIX 3: ‘Discovery and Excavation in Scotland’ Report	25

List of Illustrations

- Figure 1 Site location
Figure 2 Evaluation trench locations

List of Plates

- Plate 1 Boggy area to north of site with spoil heap beyond
Plate 2 Modern spoil tip at site access
Plate 3 Trench 44 showing disturbance

List of Appendices

- Appendix 1 Trench Descriptions
Appendix 2 Photographic Record
Appendix 3 '*Discovery and Excavation in Scotland*' Report

Abstract

This report presents the results of an archaeological evaluation undertaken in relation to a proposed residential development around Standhill Farm, Bathgate, West Lothian.

The evaluation required an 8% trenching sample of the available development area, excluding a large boggy area as well as a number of overhead and underground services.

A total of 60 trenches of varying lengths and alignments were excavated encountering neither significant archaeological features nor artefacts.

No further works are considered necessary.

1 INTRODUCTION

1.1 Background

1.1.1 AOC Archaeology Group was commissioned by Barratt East Scotland to undertake an archaeological evaluation of a proposed residential development to be situated around Standhill Farm, Bathgate, West Lothian. The evaluation was undertaken in order to satisfy the requirements of the local planning authority, West Lothian Council who are advised on archaeological matters by the West of Scotland Archaeology Service (WoSAS). The works were conducted according to the terms of a *Written Scheme of Investigation* (AOC 2013) approved on behalf of West Lothian Council by WoSAS and in accordance with the principles set out in *Scottish Planning Policy* (Scottish Government 2010) and *PAN 2/2011 Planning & Archaeology* (Scottish Government 2011).

1.2 Location

1.2.1 The site (centred on NGR NS 9675 6720) is situated within 5 fields to the south and west of Standhill Farm and was most recently used for agricultural grazing related to the farm. The southern boundary is formed by the A7066 with new housing developments to the east and north and warehouses and housing to the west (see Figure 1).

1.3 Archaeological Background

1.3.1 A search of both the National Monuments Record of Scotland and the online West Lothian Sites and Monuments Record, held by WoSAS, found no confirmed archaeological sites on the proposed development site. Discoveries within the vicinity of the site include a souterrain reported in 1863 and a Roman coin found in 1984. Unfortunately the location of these discoveries has now been lost, although it is believed that they were both found to the north of the application site within the vicinity of Whiteside and Bathgate.

1.3.2 Although the client's development plan indicates the approximate position of two mine shafts within the application site, no trace of either shaft could be found during a thorough map regression of all publicly available Ordnance Survey Maps dating from 1856 to 1990. Cartographic evidence revealed no evidence of colliery working on the site with the only post-medieval industrial activity being focused to the west of the application site where a chemical works is shown on the 1854 Ordnance Survey. This chemical works is seen to expand considerably over the course of the 19th and 20th centuries. A spoil heap most likely associated with this chemical works is shown extending onto the application site on the 1896 and 1917 Ordnance Survey, lining the southern bank of the Boghead Burn.

2 OBJECTIVES

2.1 The objectives of the archaeological evaluation were:

- i) to determine and assess the character, extent, condition, quality, date and significance of any buried archaeological remains within the proposed development area;
- ii) to advise and implement an appropriate form of mitigation, such as excavation, post-excavation analyses and publication given the infeasibility of preserving the archaeological material *in situ*, should significant archaeological remains be encountered.

3 METHODOLOGY

- 3.1 The evaluation was to comprise machine trenching of an 8% sample of the available development area taking into consideration a known area of boggy ground with standing water, as well as several services including a high power overhead and gas main. The initial target area to be evaluated equated to 9600m² (total basal trench dimensions) however, due to the presence of further services, other areas of standing water, a recently created spoil tip area and the 19th century bund of material to the north of the site, the total area evaluated has been reduced to 5744m² (see figure 2 and Plates 1). This reduction was discussed and agreed with Mr. Paul Robins of WoSAS during the archaeological works.



Plate 1 - Boggy area to north of site with spoil heap beyond



Plate 2 - Modern spoil tip at site access

- 3.2 The evaluation was undertaken by two 22 tonne tracked excavators with 2.2m wide ditching buckets. Excavation was undertaken in shallow units/spits until the first significant archaeological horizon. All machine excavation was supervised by an experienced field archaeologist and according to AOC Archaeology Group's standard operating procedures, and as per the methodology within the *Written Scheme of Investigation* (AOC 2013). The trenches were backfilled on completion of the evaluation.

4 RESULTS

- 4.1 The archaeological evaluation was undertaken between the 18th February 2013 and the 23rd February 2013. Overall weather conditions were fair allowing for good archaeological visibility throughout the evaluation. In total, 2611 m of trenching was opened, varying in alignment and length, with trenches being placed to fit between areas of standing water, service buffers and other exclusion zones (Figure 2).
- 4.2 The topsoil throughout the development area changed from field to field from a dark brown clayey silt to a greyish brown clayey silt, varying in depth from 0.2m to 0.7m in places. The natural subsoil was mainly a mottled orange, grey and brown clay with some areas of clayey sand around areas of standing water.
- 4.3 The changes in topsoil from field to field provide an indication of differing land uses throughout the development area. Furthermore, the trenching showed that the topsoil in some areas had been previously stripped due to the lack of interface with the natural subsoil. This disturbance occurred in trenches 1, 5, 10, 13, 15, 17 and 19 to the south of site, and also in trenches 46, 48, 54, 55 and 57 surrounding the possible mining and dumping activity to the north of site (Plate 3). No archaeological features or artefacts were revealed throughout the evaluation.



Plate 3 - Trench 44 showing disturbance

5 CONCLUSION AND RECOMMENDATIONS

- 5.1 From the trenches excavated within the Standhill Farm development area, it has been demonstrated that the majority of the area is archaeologically sterile with 19th Century mining activity truncating areas to the north and modern activity truncating areas to the south. No archaeological features or artefacts were revealed throughout the evaluation.
- 5.3 No further archaeological works are deemed necessary within the development area. These recommendations will have to be approved by WoSAS on behalf of West Lothian Council.

6 REFERENCES

6.1 Bibliographic references

AOC Archaeology 2013, *Standhill Farm, Bathgate, West Lothian: Written Scheme of Investigation*
Unpublished AOC project design

Scottish Government 2010 *Scottish Planning Policy*, February 2010

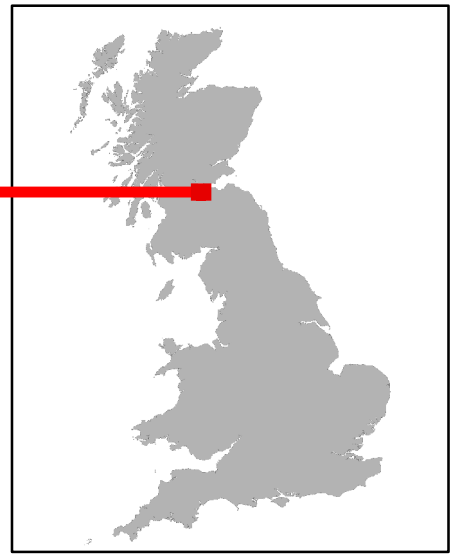
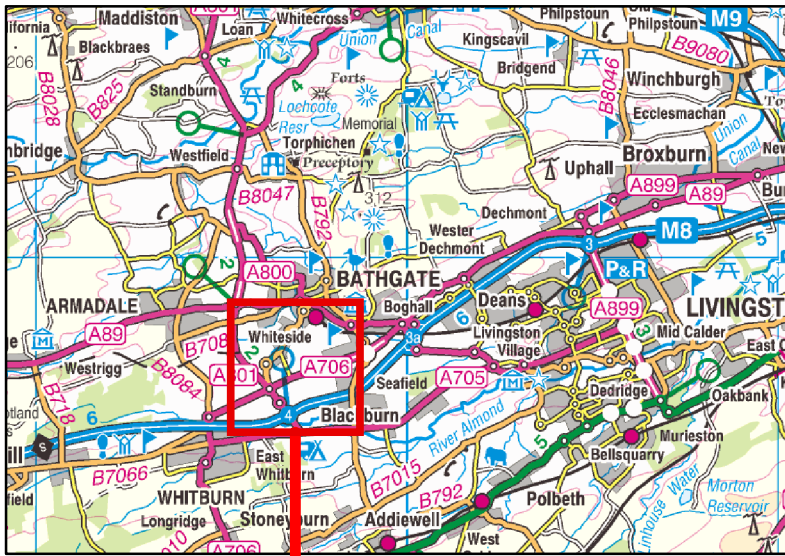
Scottish Government 2011 *Planning And Archaeology 2/2011*

6.2 Cartographic references

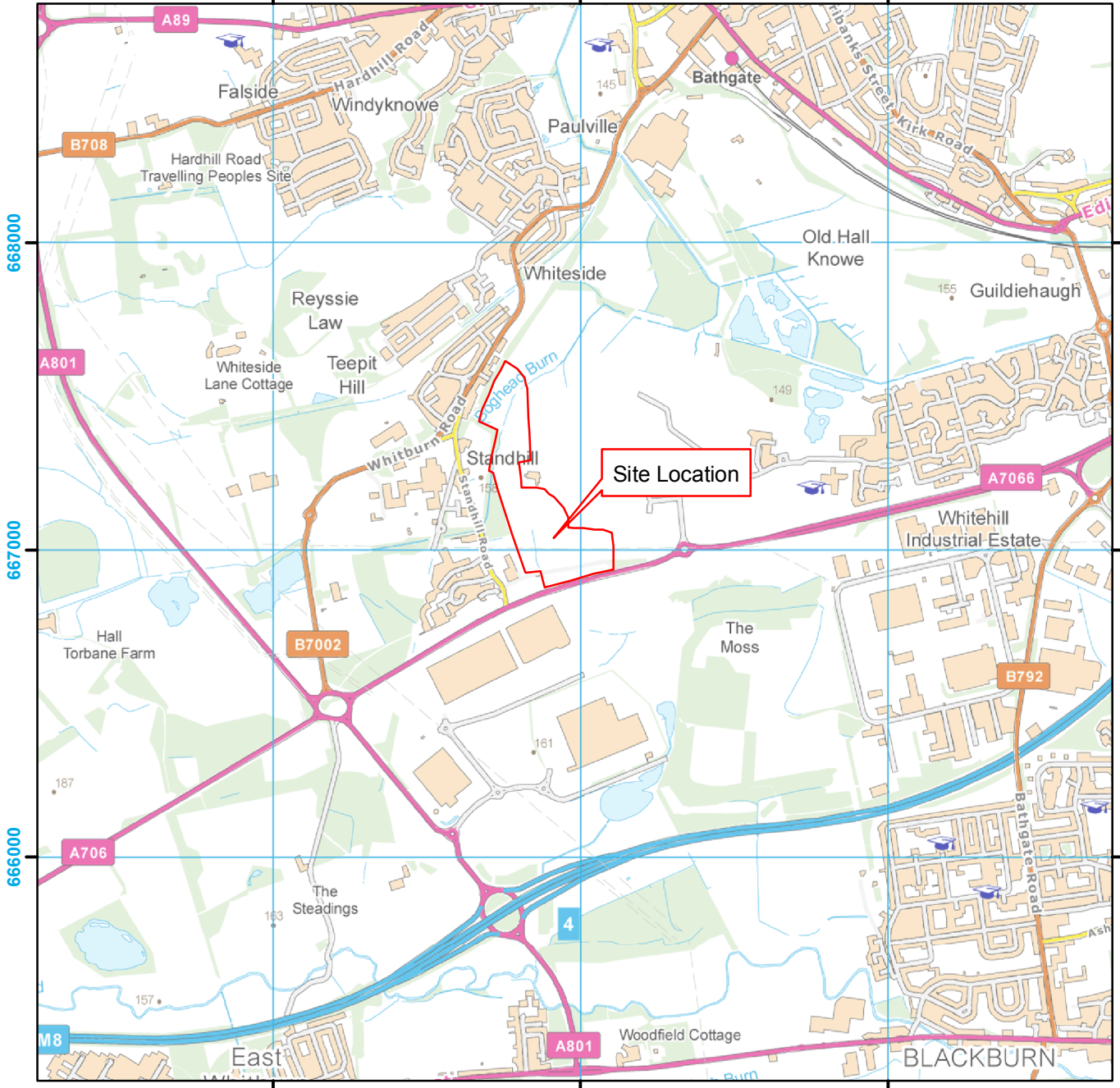
Ordnance Survey Map 1856 *Linlithgow Sheet IX.10 (Bathgate)*

Ordnance Survey Map 1897 *Linlithgowshire Sheet 009.10*

Ordnance Survey Map 1917 *Linlithgowshire, Sheet n011.02*



296000 297000 298000



296000 297000 298000

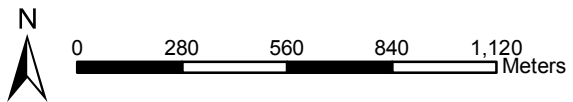


Figure 1: Site Location Plan

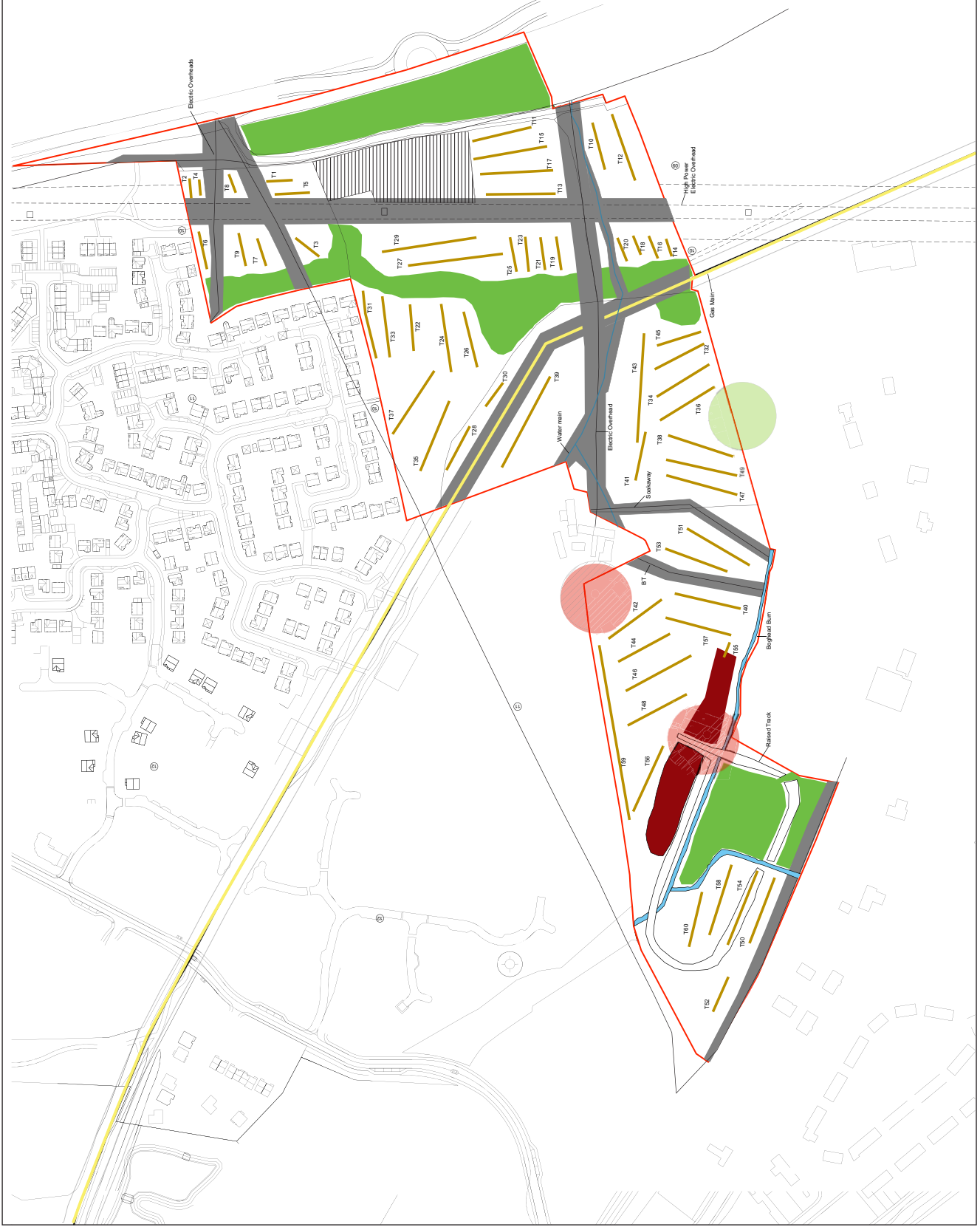
AOC 22245 Standhill Farm, Bathgate

Figure 2: Trench location plan

(Based on a drawing provided by the client)
Scale 1:250 at A1



-  2.2m wide evaluation trench
-  Development Area
-  Boggy Areas with standing water
-  Mine shaft exclusion zone
-  Badger sett exclusion zone
-  Spoil tip area
-  19th Century spoil heap
-  Approximate service buffers



Standhill Farm, Bathgate, West Lothian: Archaeological Evaluation Data Structure Report

Section 2: Appendices

APPENDIX 1: Trench Descriptions

Trench 1

<i>Dimensions</i>	20m by 2.2m
<i>Total Area</i>	44m ²
<i>Excavated Orientation</i>	E to W
<i>Soil Make-up</i>	Topsoil - dark brown silty clay with frequent stone inclusions and occasional modern ceramics and glass etc. – max depth 0.3m; Made ground – Re-deposited or disturbed natural – max depth 0.3m
<i>Depth of Excavation</i>	1.8m
<i>Significant Features</i>	None
<i>Other Features</i>	Ceramic tile field drain at 5m aligned N-S
<i>Natural Subsoil</i>	Mottled orange and grey clay with abundant stone and occasional large stone and boulders onto a purplish grey boulder clay
<i>Finds</i>	None

Trench 2

<i>Dimensions</i>	11m by 2.2m
<i>Total Area</i>	24.2m ²
<i>Excavated Orientation</i>	S to N
<i>Soil Make-up</i>	Topsoil - dark brown silty clay with frequent stone inclusions and occasional modern ceramics and glass etc. – max depth 0.44m
<i>Depth of Excavation</i>	0.45m
<i>Significant Features</i>	None
<i>Other Features</i>	None
<i>Natural Subsoil</i>	Mottled orange and grey clay with abundant stone and occasional large stone and boulders onto a purplish grey boulder clay
<i>Finds</i>	None

Trench 3

<i>Dimensions</i>	20m by 2.2m
<i>Total Area</i>	44m ²
<i>Excavated Orientation</i>	NW to SE
<i>Soil Make-up</i>	Topsoil - dark brown silty clay with frequent stone inclusions and occasional modern ceramics and glass etc. – max depth 0.44m; Subsoil – Mid greyish brown clayey silt (waterlogged topsoil/peat) – max depth 0.25m
<i>Depth of Excavation</i>	0.65m
<i>Significant Features</i>	None
<i>Other Features</i>	Ceramic tile field drain at 15m aligned N-S
<i>Natural Subsoil</i>	Mottled orange and grey clay with abundant stone and occasional large stone inclusions
<i>Finds</i>	None

Trench 4

<i>Dimensions</i>	12m by 2.2m
<i>Total Area</i>	26.4m ²
<i>Excavated Orientation</i>	S to N
<i>Soil Make-up</i>	Topsoil - dark brown silty clay with frequent stone inclusions and occasional modern ceramics and glass etc. – max depth 0.48m
<i>Depth of Excavation</i>	0.5m
<i>Significant Features</i>	None
<i>Other Features</i>	None
<i>Natural Subsoil</i>	Mottled orange and grey clay with abundant stone and occasional large stone and boulders onto a purplish grey boulder clay
<i>Finds</i>	None

Trench 5

<i>Dimensions</i>	25m by 2.2m
<i>Total Area</i>	55m ²
<i>Excavated Orientation</i>	E to W
<i>Soil Make-up</i>	Topsoil - dark brown silty clay with frequent stone inclusions and occasional modern ceramics and glass etc. – max depth 0.3m; Made ground – Re-deposited or disturbed natural – max depth 0.3m
<i>Depth of Excavation</i>	0.6m
<i>Significant Features</i>	None
<i>Other Features</i>	Ceramic tile field drain at 5m and 15m aligned N-S
<i>Natural Subsoil</i>	Mottled orange and grey clay with abundant stone and occasional large stone inclusions
<i>Finds</i>	None

Trench 6

<i>Dimensions</i>	28m by 2.2m
<i>Total Area</i>	61.6m ²
<i>Excavated Orientation</i>	S to N
<i>Soil Make-up</i>	Topsoil - dark brown silty clay with frequent stone inclusions and occasional modern ceramics and glass etc. – max depth 0.6m
<i>Depth of Excavation</i>	0.6m
<i>Significant Features</i>	None
<i>Other Features</i>	None
<i>Natural Subsoil</i>	Mottled orangey brown and purplish grey clay with abundant stone then orange sandy clay with frequent stone inclusions from 10m
<i>Finds</i>	None

Trench 7

<i>Dimensions</i>	25m by 2.2m
<i>Total Area</i>	55m ²
<i>Excavated Orientation</i>	N to S
<i>Soil Make-up</i>	Topsoil - dark brown silty clay with frequent stone inclusions and occasional modern ceramics and glass etc. – max depth 0.7m
<i>Depth of Excavation</i>	0.7m
<i>Significant Features</i>	None
<i>Other Features</i>	None
<i>Natural Subsoil</i>	Orange sandy clay with frequent stone inclusions
<i>Finds</i>	None

Trench 8

<i>Dimensions</i>	15m by 2.2m
<i>Total Area</i>	33m ²
<i>Excavated Orientation</i>	S to N
<i>Soil Make-up</i>	Topsoil - dark brown silty clay with frequent stone inclusions and occasional modern ceramics and glass etc. – max depth 0.5m
<i>Depth of Excavation</i>	1.2m
<i>Significant Features</i>	None
<i>Other Features</i>	None
<i>Natural Subsoil</i>	Purplish grey clay with large stone and boulder inclusions
<i>Finds</i>	None

Trench 9

<i>Dimensions</i>	25m by 2.2m
<i>Total Area</i>	55m ²

<i>Excavated Orientation</i>	N to S
<i>Soil Make-up</i>	Topsoil - dark brown silty clay with frequent stone inclusions and occasional modern ceramics and glass etc. – max depth 0.7m
<i>Depth of Excavation</i>	0.7m
<i>Significant Features</i>	None
<i>Other Features</i>	None
<i>Natural Subsoil</i>	Orange sandy clay with frequent stone inclusions
<i>Finds</i>	None

Trench 10

<i>Dimensions</i>	46m by 2.2m
<i>Total Area</i>	101.2m ²
<i>Excavated Orientation</i>	S to N
<i>Soil Make-up</i>	Topsoil - dark greyish brown silty clay with occasional stone inclusions and rare modern ceramics – max depth 0.53m; Peat (starting at 31m) – Mid grey organic rich clayey silt
<i>Depth of Excavation</i>	1.5m
<i>Significant Features</i>	None
<i>Other Features</i>	Ceramic pipe aligned E-W at 16m; field drain aligned SW-NE at 40m
<i>Natural Subsoil</i>	Mottled orange, grey, brown and pink clay and stone
<i>Finds</i>	None

Trench 11

<i>Dimensions</i>	50m by 2.2m
<i>Total Area</i>	110m ²
<i>Excavated Orientation</i>	E to W
<i>Soil Make-up</i>	Topsoil - dark brown silty clay with frequent stone inclusions – max depth 0.3m; Made ground – Dark brown clayey silt with abundant modern glass, plastic, ceramics etc – max depth 0.5m
<i>Depth of Excavation</i>	0.8m
<i>Significant Features</i>	None
<i>Other Features</i>	None
<i>Natural Subsoil</i>	Mottled yellow and pink clay with frequent stone inclusions
<i>Finds</i>	None

Trench 12

<i>Dimensions</i>	51m by 2.2m
<i>Total Area</i>	112.2m ²
<i>Excavated Orientation</i>	S to N
<i>Soil Make-up</i>	Topsoil - dark greyish brown silty clay with occasional stone inclusions and rare modern ceramics – max depth 0.45m
<i>Depth of Excavation</i>	0.45m
<i>Significant Features</i>	None
<i>Other Features</i>	None
<i>Natural Subsoil</i>	Mottled orange, grey, brown and pink clay and stone
<i>Finds</i>	None

Trench 13

<i>Dimensions</i>	50m by 2.2m
<i>Total Area</i>	110m ²
<i>Excavated Orientation</i>	E to W
<i>Soil Make-up</i>	Topsoil - dark brown silty clay with frequent stone inclusions – max depth 0.2m
<i>Depth of Excavation</i>	0.3m
<i>Significant Features</i>	None

<i>Other Features</i>	None
<i>Natural Subsoil</i>	Mottled yellow and white clay with frequent stone inclusions
<i>Finds</i>	None

Trench 14

<i>Dimensions</i>	12.5m by 2.2m
<i>Total Area</i>	27.5m ²
<i>Excavated Orientation</i>	S to N
<i>Soil Make-up</i>	Topsoil - dark greyish brown silty clay with occasional stone inclusions – max depth 0.3m
<i>Depth of Excavation</i>	0.4m
<i>Significant Features</i>	None
<i>Other Features</i>	None
<i>Natural Subsoil</i>	Mottled orange and grey clay with abundant stone
<i>Finds</i>	None

Trench 15

<i>Dimensions</i>	60m by 2.2m
<i>Total Area</i>	132m ²
<i>Excavated Orientation</i>	E to W
<i>Soil Make-up</i>	Topsoil - dark brown silty clay with frequent stone inclusions – max depth 0.2m; Made ground (Cut starts at 15m) – Dark brown clayey silt with abundant modern glass, plastic, ceramics etc – max depth 0.6m
<i>Depth of Excavation</i>	0.8m
<i>Significant Features</i>	None
<i>Other Features</i>	None
<i>Natural Subsoil</i>	Mottled yellow and pink clay with frequent stone inclusions
<i>Finds</i>	None

Trench 16

<i>Dimensions</i>	17.5m by 2.2m
<i>Total Area</i>	38.5m ²
<i>Excavated Orientation</i>	S to N
<i>Soil Make-up</i>	Topsoil - dark greyish brown silty clay with occasional stone inclusions – max depth 0.45m
<i>Depth of Excavation</i>	0.45m
<i>Significant Features</i>	None
<i>Other Features</i>	None
<i>Natural Subsoil</i>	Mottled orange and grey clay with abundant stone
<i>Finds</i>	None

Trench 17

<i>Dimensions</i>	60m by 2.2m
<i>Total Area</i>	132m ²
<i>Excavated Orientation</i>	E to W
<i>Soil Make-up</i>	Topsoil - dark brown silty clay with frequent stone inclusions – max depth 0.2m
<i>Depth of Excavation</i>	0.5m
<i>Significant Features</i>	None
<i>Other Features</i>	None
<i>Natural Subsoil</i>	Mottled yellow and white clay with frequent stone inclusions
<i>Finds</i>	None

Trench 18

<i>Dimensions</i>	15m by 2.2m
<i>Total Area</i>	33m ²
<i>Excavated Orientation</i>	S to N

<i>Soil Make-up</i>	Topsoil - dark greyish brown silty clay with occasional stone inclusions – max depth 0.6m
<i>Depth of Excavation</i>	0.6m
<i>Significant Features</i>	None
<i>Other Features</i>	Ceramic tile field drain running south to north
<i>Natural Subsoil</i>	Mottled orange and grey clay with abundant stone
<i>Finds</i>	None

Trench 19

<i>Dimensions</i>	25m by 2.2m
<i>Total Area</i>	55m ²
<i>Excavated Orientation</i>	N to S
<i>Soil Make-up</i>	Topsoil - dark brown silty clay with frequent stone inclusions – max depth 0.25m
<i>Depth of Excavation</i>	0.3m
<i>Significant Features</i>	None
<i>Other Features</i>	None
<i>Natural Subsoil</i>	Mid orange clayey sand
<i>Finds</i>	None

Trench 20

<i>Dimensions</i>	20m by 2.2m
<i>Total Area</i>	44m ²
<i>Excavated Orientation</i>	S to N
<i>Soil Make-up</i>	Topsoil - dark greyish brown silty clay with occasional stone inclusions – max depth 0.4m
<i>Depth of Excavation</i>	0.4m
<i>Significant Features</i>	None
<i>Other Features</i>	None
<i>Natural Subsoil</i>	Mottled orange and pale brown clayey sand
<i>Finds</i>	None

Trench 21

<i>Dimensions</i>	25m by 2.2m
<i>Total Area</i>	55m ²
<i>Excavated Orientation</i>	N to S
<i>Soil Make-up</i>	Topsoil - dark brown silty clay with frequent stone inclusions – max depth 0.25m
<i>Depth of Excavation</i>	0.3m
<i>Significant Features</i>	None
<i>Other Features</i>	None
<i>Natural Subsoil</i>	Mid orange clayey sand
<i>Finds</i>	None

Trench 22

<i>Dimensions</i>	25m by 2.2m
<i>Total Area</i>	55m ²
<i>Excavated Orientation</i>	N to S
<i>Soil Make-up</i>	Topsoil - dark brown silty clay with frequent stone inclusions – max depth 0.6m
<i>Depth of Excavation</i>	0.6m
<i>Significant Features</i>	None
<i>Other Features</i>	None
<i>Natural Subsoil</i>	Mottled orange and brown clay with abundant stone
<i>Finds</i>	None

Trench 23

<i>Dimensions</i>	25m by 2.2m
<i>Total Area</i>	55m ²

<i>Excavated Orientation</i>	N to S
<i>Soil Make-up</i>	Topsoil - dark brown silty clay with frequent stone inclusions – max depth 0.35m
<i>Depth of Excavation</i>	0.35m
<i>Significant Features</i>	None
<i>Other Features</i>	None
<i>Natural Subsoil</i>	Mid orange clayey sand
<i>Finds</i>	None

Trench 24

<i>Dimensions</i>	50m by 2.2m
<i>Total Area</i>	110m ²
<i>Excavated Orientation</i>	S to N
<i>Soil Make-up</i>	Topsoil - dark brown silty clay with frequent stone inclusions – max depth 0.5m
<i>Depth of Excavation</i>	0.5m
<i>Significant Features</i>	None
<i>Other Features</i>	None
<i>Natural Subsoil</i>	Mottled orange and brown clay with abundant stone
<i>Finds</i>	None

Trench 25

<i>Dimensions</i>	25m by 2.2m
<i>Total Area</i>	55m ²
<i>Excavated Orientation</i>	N to S
<i>Soil Make-up</i>	Topsoil - dark brown silty clay with frequent stone inclusions – max depth 0.38m
<i>Depth of Excavation</i>	0.38m
<i>Significant Features</i>	None
<i>Other Features</i>	Ceramic field drain running N-S
<i>Natural Subsoil</i>	Mid orange clayey sand
<i>Finds</i>	None

Trench 26

<i>Dimensions</i>	42m by 2.2m
<i>Total Area</i>	92.4m ²
<i>Excavated Orientation</i>	S to N
<i>Soil Make-up</i>	Topsoil - dark brown silty clay with frequent stone inclusions – max depth 0.4m
<i>Depth of Excavation</i>	0.4m
<i>Significant Features</i>	None
<i>Other Features</i>	None
<i>Natural Subsoil</i>	Mottled orange and brown clayey sand to 7m then mottled orange and brown clay with abundant stone
<i>Finds</i>	None

Trench 27

<i>Dimensions</i>	80m by 2.2m
<i>Total Area</i>	176m ²
<i>Excavated Orientation</i>	E to W
<i>Soil Make-up</i>	Topsoil - dark brown silty clay with frequent stone inclusions – max depth 0.4m
<i>Depth of Excavation</i>	0.4m
<i>Significant Features</i>	None
<i>Other Features</i>	None
<i>Natural Subsoil</i>	Mottled orange, brown and grey clay with abundant stone
<i>Finds</i>	None

Trench 28

<i>Dimensions</i>	36m by 2.2m
<i>Total Area</i>	79.2m ²
<i>Excavated Orientation</i>	SW to NE
<i>Soil Make-up</i>	Topsoil – Mid brown loam with frequent stone inclusions – max depth 0.75m
<i>Depth of Excavation</i>	0.75m
<i>Significant Features</i>	None
<i>Other Features</i>	None
<i>Natural Subsoil</i>	Light grey clayey sand to 7m then orange and grey clay with abundant stone
<i>Finds</i>	None

Trench 29

<i>Dimensions</i>	80m by 2.2m
<i>Total Area</i>	176m ²
<i>Excavated Orientation</i>	E to W
<i>Soil Make-up</i>	Topsoil - dark brown silty clay with frequent stone inclusions – max depth 0.2m
<i>Depth of Excavation</i>	0.2m
<i>Significant Features</i>	None
<i>Other Features</i>	Ceramic field drain at 71m; rubble drains aligned N-S at 4m, 9m, 19m, and 36m
<i>Natural Subsoil</i>	Mottled orange, brown and grey clay with abundant stone
<i>Finds</i>	None

Trench 30

<i>Dimensions</i>	22m by 2.2m
<i>Total Area</i>	48.4m ²
<i>Excavated Orientation</i>	NE to SW
<i>Soil Make-up</i>	Topsoil – Mid brown loam with frequent stone inclusions – max depth 0.62m
<i>Depth of Excavation</i>	0.62m
<i>Significant Features</i>	None
<i>Other Features</i>	None
<i>Natural Subsoil</i>	Light grey clayey sand
<i>Finds</i>	None

Trench 31

<i>Dimensions</i>	50m by 2.2m
<i>Total Area</i>	110m ²
<i>Excavated Orientation</i>	N to S
<i>Soil Make-up</i>	Topsoil - dark brown silty clay with frequent stone inclusions – max depth 0.3m
<i>Depth of Excavation</i>	0.3m
<i>Significant Features</i>	None
<i>Other Features</i>	None
<i>Natural Subsoil</i>	Mottled orange and grey clay with abundant stone
<i>Finds</i>	None

Trench 32

<i>Dimensions</i>	44m by 2.2m
<i>Total Area</i>	96.8m ²
<i>Excavated Orientation</i>	SW to NE
<i>Soil Make-up</i>	Topsoil – mid greyish brown silty clay with frequent stone inclusions – max depth 0.36m
<i>Depth of Excavation</i>	0.36m
<i>Significant Features</i>	None
<i>Other Features</i>	Ceramic tile drain running W-E at 2.75m and S-N at 16.9m
<i>Natural Subsoil</i>	Orange clay with abundant stone
<i>Finds</i>	None

Trench 33

<i>Dimensions</i>	55m by 2.2m
<i>Total Area</i>	122m ²
<i>Excavated Orientation</i>	N to S
<i>Soil Make-up</i>	Topsoil - dark brown silty clay with frequent stone inclusions – max depth 0.21m
<i>Depth of Excavation</i>	0.3m
<i>Significant Features</i>	None
<i>Other Features</i>	None
<i>Natural Subsoil</i>	Mottled orange and grey clay with abundant stone
<i>Finds</i>	None

Trench 34

<i>Dimensions</i>	45m by 2.2m
<i>Total Area</i>	99m ²
<i>Excavated Orientation</i>	SW to NE
<i>Soil Make-up</i>	Topsoil – mid greyish brown silty clay with frequent stone inclusions – max depth 0.44m
<i>Depth of Excavation</i>	0.44m
<i>Significant Features</i>	None
<i>Other Features</i>	Ceramic tile drain running E-W at 13m and 34m; cast iron pipe at 39m
<i>Natural Subsoil</i>	Orange clay with abundant stone
<i>Finds</i>	None

Trench 35

<i>Dimensions</i>	60m by 2.2m
<i>Total Area</i>	132m ²
<i>Excavated Orientation</i>	SW to NE
<i>Soil Make-up</i>	Topsoil - dark brown silty clay with frequent stone inclusions – max depth 0.35m
<i>Depth of Excavation</i>	0.35m
<i>Significant Features</i>	None
<i>Other Features</i>	Ceramic tile drain at 7m
<i>Natural Subsoil</i>	Mottled orange and grey clay with abundant stone
<i>Finds</i>	None

Trench 36

<i>Dimensions</i>	47m by 2.2m
<i>Total Area</i>	103.4m ²
<i>Excavated Orientation</i>	SW to NE
<i>Soil Make-up</i>	Topsoil – mid greyish brown silty clay with frequent stone inclusions – max depth 0.44m
<i>Depth of Excavation</i>	0.44m
<i>Significant Features</i>	None
<i>Other Features</i>	Ceramic tile drain running E-W at 33.5m
<i>Natural Subsoil</i>	Mottled orange and grey clay with abundant stone
<i>Finds</i>	None

Trench 37

<i>Dimensions</i>	55m by 2.2m
<i>Total Area</i>	121m ²
<i>Excavated Orientation</i>	SW to NE
<i>Soil Make-up</i>	Topsoil - dark brown silty clay with frequent stone inclusions – max depth 0.35m
<i>Depth of Excavation</i>	0.35m
<i>Significant Features</i>	None
<i>Other Features</i>	None
<i>Natural Subsoil</i>	Mottled orange and grey clay with abundant stone

Finds None

Trench 38

Dimensions 49m by 2.2m
 Total Area 107.8m²
 Excavated Orientation NW to SE
 Soil Make-up Topsoil – mid greyish brown silty clay with frequent stone inclusions – max depth 0.5m
 Depth of Excavation 0.5m
 Significant Features None
 Other Features Area of ash and grey sand between 14m and 31m – mining waste; field drain at 11m to 14.8m
 Natural Subsoil Orange clay with abundant stone
 Finds None

Trench 39

Dimensions 80m by 2.2m
 Total Area 176m²
 Excavated Orientation SW to NE
 Soil Make-up Topsoil – mid greyish brown silty clay with frequent stone inclusions – max depth 0.38m
 Depth of Excavation 0.38m
 Significant Features None
 Other Features None
 Natural Subsoil Orange clay with abundant stone
 Finds None

Trench 40

Dimensions 51m by 2.2m
 Total Area 112.2m²
 Excavated Orientation WNW-ESE
 Soil Make-up Topsoil – dark brown/black clayey silt – max depth 0.45m; Colluvium – mid brown sandy clay – max depth 0.43m (from 0m to 15m); Grey sandy clay with ashy material throughout at 36m to 35.7m
 Depth of Excavation 0.8m
 Significant Features None
 Other Features Ceramic tile field drain running E-W at 2.3m to 17m; cast iron pipe at 33m
 Natural Subsoil Orange clay with abundant stone
 Finds None

Trench 41

Dimensions 35m by 2.2m
 Total Area 77m²
 Excavated Orientation SW to NE
 Soil Make-up Topsoil – mid greyish brown silty clay with frequent stone inclusions – max depth 0.28m
 Depth of Excavation 0.28m
 Significant Features None
 Other Features None
 Natural Subsoil Orange clay with abundant stone
 Finds None

Trench 42

Dimensions 50m by 2.2m
 Total Area 110m²
 Excavated Orientation SW to NE
 Soil Make-up Topsoil – mid grey silty clay with frequent stone inclusions – max depth 0.45m
 Depth of Excavation 0.45m

<i>Significant Features</i>	None
<i>Other Features</i>	Ceramic tile field drain at 1.5m to 4.2m (E-W) and at 8.1m to 14.4m (N-S)
<i>Natural Subsoil</i>	Mottled orange and brown clay with abundant stone
<i>Finds</i>	None

Trench 43

<i>Dimensions</i>	80m by 2.2m
<i>Total Area</i>	176m ²
<i>Excavated Orientation</i>	SW to NE
<i>Soil Make-up</i>	Topsoil – mid greyish brown silty clay with frequent stone inclusions – max depth 0.35m
<i>Depth of Excavation</i>	0.35m
<i>Significant Features</i>	None
<i>Other Features</i>	Ceramic tile field drain running N-S at 50m to 54m
<i>Natural Subsoil</i>	Orange clay with abundant stone
<i>Finds</i>	None

Trench 44

<i>Dimensions</i>	50m by 2.2m
<i>Total Area</i>	110m ²
<i>Excavated Orientation</i>	SW to NE
<i>Soil Make-up</i>	Topsoil – mid grey silty clay with frequent stone inclusions – max depth 0.5m
<i>Depth of Excavation</i>	0.8m
<i>Significant Features</i>	None
<i>Other Features</i>	Red blaes and brick rubble filled drainage track at 11m
<i>Natural Subsoil</i>	Orange clay with abundant stone
<i>Finds</i>	None

Trench 45

<i>Dimensions</i>	30m by 2.2m
<i>Total Area</i>	66m ²
<i>Excavated Orientation</i>	E to W
<i>Soil Make-up</i>	Topsoil – mid greyish brown silty clay with frequent stone inclusions – max depth 0.38m
<i>Depth of Excavation</i>	0.32m
<i>Significant Features</i>	None
<i>Other Features</i>	Ceramic tile field drain at 10m (SW-NE) and rubble drain at 22m (SW-NE)
<i>Natural Subsoil</i>	Orange clay with abundant stone
<i>Finds</i>	None

Trench 46

<i>Dimensions</i>	55m by 2.2m
<i>Total Area</i>	121m ²
<i>Excavated Orientation</i>	SW to NE
<i>Soil Make-up</i>	Topsoil – mid grey silty clay with frequent stone inclusions – max depth 0.3m; Mix of coal dust and clay from 0m to 6.7m – max depth 1.2m
<i>Depth of Excavation</i>	1.5m
<i>Significant Features</i>	None
<i>Other Features</i>	None
<i>Natural Subsoil</i>	Orange clay with abundant stone from 7m to 15m then orange and grey boulder clay
<i>Finds</i>	None

Trench 47

<i>Dimensions</i>	50m by 2.2m
<i>Total Area</i>	110m ²
<i>Excavated Orientation</i>	N to S

<i>Soil Make-up</i>	Topsoil – mid greyish brown silty clay with frequent stone inclusions – max depth 0.28m
<i>Depth of Excavation</i>	0.28m
<i>Significant Features</i>	None
<i>Other Features</i>	Ceramic tile field drain at 10m and 24m (NW-SE); cast iron pipe at 39m
<i>Natural Subsoil</i>	Orange clay with abundant stone
<i>Finds</i>	None

Trench 48

<i>Dimensions</i>	46m by 2.2m
<i>Total Area</i>	101.2m ²
<i>Excavated Orientation</i>	SW to NE
<i>Soil Make-up</i>	Topsoil – mid grey silty clay with frequent stone inclusions – max depth 0.42m
<i>Depth of Excavation</i>	0.42m
<i>Significant Features</i>	None
<i>Other Features</i>	Probable mining disturbance from 32m to 36m then up NW edge until 40m
<i>Natural Subsoil</i>	Yellow and orange clay with abundant stone then pale yellow clay at end of trench
<i>Finds</i>	None

Trench 49

<i>Dimensions</i>	50m by 2.2m
<i>Total Area</i>	110m ²
<i>Excavated Orientation</i>	N to S
<i>Soil Make-up</i>	Topsoil – mid greyish brown silty clay with frequent stone inclusions – max depth 0.38m
<i>Depth of Excavation</i>	0.38m
<i>Significant Features</i>	None
<i>Other Features</i>	Ceramic tile field drains (NW-SE) at 9m and 20m; cast iron pipe at 42m
<i>Natural Subsoil</i>	Orange clay with abundant stone
<i>Finds</i>	None

Trench 50

<i>Dimensions</i>	53m by 2.2m
<i>Total Area</i>	132.5m ²
<i>Excavated Orientation</i>	S to N
<i>Soil Make-up</i>	Topsoil – dark grey/black sandy silt – max depth 0.34m; Subsoil – mid brown sandy clay from 0m to 25m – max depth 0.24m
<i>Depth of Excavation</i>	0.6m
<i>Significant Features</i>	None
<i>Other Features</i>	None
<i>Natural Subsoil</i>	Mottled orange and brown clay with abundant stone
<i>Finds</i>	None

Trench 51

<i>Dimensions</i>	55m by 2.2m
<i>Total Area</i>	121m ²
<i>Excavated Orientation</i>	NW to SE
<i>Soil Make-up</i>	Topsoil – dark brown/black clayey silt – max depth 0.28m
<i>Depth of Excavation</i>	0.28m
<i>Significant Features</i>	None
<i>Other Features</i>	None
<i>Natural Subsoil</i>	Orange clay with abundant stone
<i>Finds</i>	None

Trench 52

<i>Dimensions</i>	26m by 2.2m
-------------------	-------------

<i>Total Area</i>	57.2m ²
<i>Excavated Orientation</i>	S to N
<i>Soil Make-up</i>	Topsoil – dark grey sandy silt – max depth 0.4m
<i>Depth of Excavation</i>	0.4m
<i>Significant Features</i>	None
<i>Other Features</i>	None
<i>Natural Subsoil</i>	Mottled orange and pale yellow clay with abundant stone
<i>Finds</i>	None

Trench 53

<i>Dimensions</i>	55m by 2.2m
<i>Total Area</i>	121m ²
<i>Excavated Orientation</i>	WNW to ESE
<i>Soil Make-up</i>	Topsoil – dark brown/black clayey silt – max depth 0.3m
<i>Depth of Excavation</i>	0.3m
<i>Significant Features</i>	None
<i>Other Features</i>	None
<i>Natural Subsoil</i>	Orange clay with abundant stone
<i>Finds</i>	None

Trench 54

<i>Dimensions</i>	50m by 2.2m
<i>Total Area</i>	110m ²
<i>Excavated Orientation</i>	S to N
<i>Soil Make-up</i>	Made Ground – dark grey sandy silt with lenses of red blaes and shale onto a dark brown clay – max depth 0.9m
<i>Depth of Excavation</i>	0.9m
<i>Significant Features</i>	None
<i>Other Features</i>	None
<i>Natural Subsoil</i>	Mottled grey and brown clay with large stone and boulder inclusions
<i>Finds</i>	None

Trench 55

<i>Dimensions</i>	10m by 2.2m
<i>Total Area</i>	22m ²
<i>Excavated Orientation</i>	N to S
<i>Soil Make-up</i>	Made ground (0m to 5m) – dark grey clayey silt – max depth 0.7m; Topsoil (5m to 10m) – dark brown/black clayey silt – max depth 0.2m
<i>Depth of Excavation</i>	0.7m
<i>Significant Features</i>	None
<i>Other Features</i>	None
<i>Natural Subsoil</i>	Orange clay with abundant stone
<i>Finds</i>	None

Trench 56

<i>Dimensions</i>	50m by 2.2m
<i>Total Area</i>	110m ²
<i>Excavated Orientation</i>	S to N
<i>Soil Make-up</i>	Topsoil – dark grey silt – max depth 0.4m
<i>Depth of Excavation</i>	0.4m
<i>Significant Features</i>	None
<i>Other Features</i>	None
<i>Natural Subsoil</i>	Mottled orange and brown clay with large stone and boulder inclusions
<i>Finds</i>	None

Trench 57

<i>Dimensions</i>	50m by 2.2m
<i>Total Area</i>	110m ²
<i>Excavated Orientation</i>	E to W
<i>Soil Make-up</i>	Topsoil – dark brown/black clayey silt – max depth 0.38m; Colluvium – mid brown sandy clay – max depth 0.15m (from 0m to 15m)
<i>Depth of Excavation</i>	0.55m
<i>Significant Features</i>	None
<i>Other Features</i>	Cinder and shale road from 5m to 10m; ceramic tile field drain at 45m (NE-SW)
<i>Natural Subsoil</i>	Orange clay with abundant stone
<i>Finds</i>	None

Trench 58

<i>Dimensions</i>	50m by 2.2m
<i>Total Area</i>	110m ²
<i>Excavated Orientation</i>	S to N
<i>Soil Make-up</i>	Topsoil – mid greyish brown peaty clay – max depth 0.4m
<i>Depth of Excavation</i>	0.5m
<i>Significant Features</i>	None
<i>Other Features</i>	None
<i>Natural Subsoil</i>	Mottled orange, pale yellow and grey clay with frequent stone inclusions
<i>Finds</i>	None

Trench 59

<i>Dimensions</i>	130m by 2.2m
<i>Total Area</i>	286m ²
<i>Excavated Orientation</i>	SE to NW
<i>Soil Make-up</i>	Topsoil – mid grey silty clay with frequent stone inclusions – max depth 0.4m
<i>Depth of Excavation</i>	0.4m
<i>Significant Features</i>	None
<i>Other Features</i>	Ceramic tile field drain aligned SE-NW
<i>Natural Subsoil</i>	Orange and yellow clay with abundant stone
<i>Finds</i>	None

Trench 60

<i>Dimensions</i>	45m by 2.2m
<i>Total Area</i>	99m ²
<i>Excavated Orientation</i>	S to N
<i>Soil Make-up</i>	Topsoil – mid greyish brown peaty clay – max depth 0.4m
<i>Depth of Excavation</i>	0.4m
<i>Significant Features</i>	None
<i>Other Features</i>	None
<i>Natural Subsoil</i>	Light grey clayey sand at 0m to 5m then mottled grey, yellow and orange clayey sand to 45m
<i>Finds</i>	None

APPENDIX 2: Photographic Record

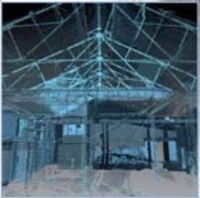
Digital Photographs

Frame	Description	From	Date
1	Boggy area next to A7066	E	19/2/13
2-6	Overheads on site	S	19/2/13
7-11	Backfilled trenches in SE corner	Var	19/2/13
12	Spoil tip area	E	19/2/13
13	T11 Post-ex	E	19/2/13
14	T17 Post-ex	E	19/2/13
15	T15 Post-ex	E	19/2/13
16	T13 Post-ex	E	19/2/13
17	T31 Post-ex	S	19/2/13
18	T22 Post-ex	S	19/2/13
19	General shot of south west area T19, T21, T23 & T25	NE	19/2/13
20	General shot of south west area T27 & T29	N	19/2/13
21	T24 Post-ex	S	19/2/13
22	T26 Post-ex	S	19/2/13
23	T33 Post-ex	S	19/2/13
24	T35 Post-ex	SW	19/2/13
25-26	Line of gas main	Var	19/2/13
27	T28 Post-ex	SW	19/2/13
28	T30 Post-ex	NE	19/2/13
29	T32 Post-ex	SW	19/2/13
30	T34 Post-ex	SW	19/2/13
31	T36 Post-ex	SW	19/2/13
32	T38 Post-ex	NW	19/2/13
33	T40 Post-ex	WNW	19/2/13
34	T55 showing dumped deposit	S	19/2/13
35	Section of T55	SW	19/2/13
36	T57 section	S	19/2/13
37	T42 Post-ex	SW	19/2/13
38	T44 Post-ex	SW	19/2/13
39	Section of T46 showing disturbance	S	19/2/13
40-46	General shot of spoil tips/bunds	Var	19/2/13
47-49	Boggy area with trackway around it	Var	19/2/13
50	Trackway raised above burn	S	20/2/13
51-54	General shots of boggy area	Var	20/2/13
55	Scottish water drain	W	20/2/13
56	View of boggy area and raised track	NW	20/2/13
57-61	View of boggy area and raised track	Var	20/2/13

62-63	View of trenches	N	20/2/13
64	T50 Post-ex	N	20/2/13
65	T52 Post-ex	N	20/2/13
66	T54 Post-ex	S	20/2/13
67	E-facing section of T54 showing made ground	E	20/2/13
68	T56 Post-ex	S	20/2/13
69	T60 Post-ex	N	20/2/13
70-75	General shots of backfilled areas	Var	20/2/13

APPENDIX 3: 'Discovery and Excavation in Scotland' Report

LOCAL AUTHORITY:	West Lothian Council
PROJECT TITLE/SITE NAME	Standhill Farm
PROJECT CODE:	AOC 22245
PARISH:	Bathgate
NAME OF CONTRIBUTOR:	Kevin Paton
NAME OF ORGANISATION:	AOC Archaeology Group
TYPE(S) OF PROJECT:	Archaeological Evaluation
NMRS NO(S)	None
SITE/MONUMENT TYPE(S):	N/A
SIGNIFICANT FINDS:	N/A
NGR (2 letters, 6 figures)	NS 9675 6720
START DATE (this season)	18 th February 2013
END DATE (this season)	23 rd February 2013
PREVIOUS WORK (incl. DES ref.)	None
MAIN (NARRATIVE) DESCRIPTION: (May include information from other fields)	<p>An archaeological evaluation was undertaken in relation to a proposed residential development around Standhill Farm, Bathgate, West Lothian.</p> <p>The evaluation required an 8% trenching sample of the available development area, excluding a large boggy area as well as a number of overhead and underground services.</p> <p>A total of 60 trenches of varying lengths and alignments were excavated encountering neither significant archaeological features nor artefacts</p>
PROPOSED FUTURE WORK:	None
CAPTION(S) FOR ILLUSTRS:	---
SPONSOR OR FUNDING BODY:	Barratt East Scotland
ADDRESS OF MAIN CONTRIBUTOR:	Edgefield Road Industrial Estate, Loanhead, Midlothian, EH20 9SY
EMAIL ADDRESS:	Kevin.paton@aocarchaeology.com
ARCHIVE LOCATION (intended/deposited)	Archive to be deposited in NMRS



AOC Archaeology Group, Edgefield Industrial Estate, Edgefield Road, Loanhead EH20 9SY
tel: 0131 440 3593 | fax: 0131 440 3422 | e-mail: admin@aocarchaeology.com

www.aocarchaeology.com