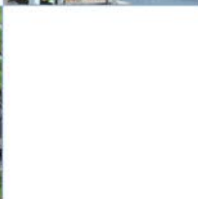
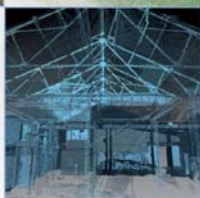
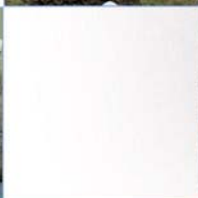
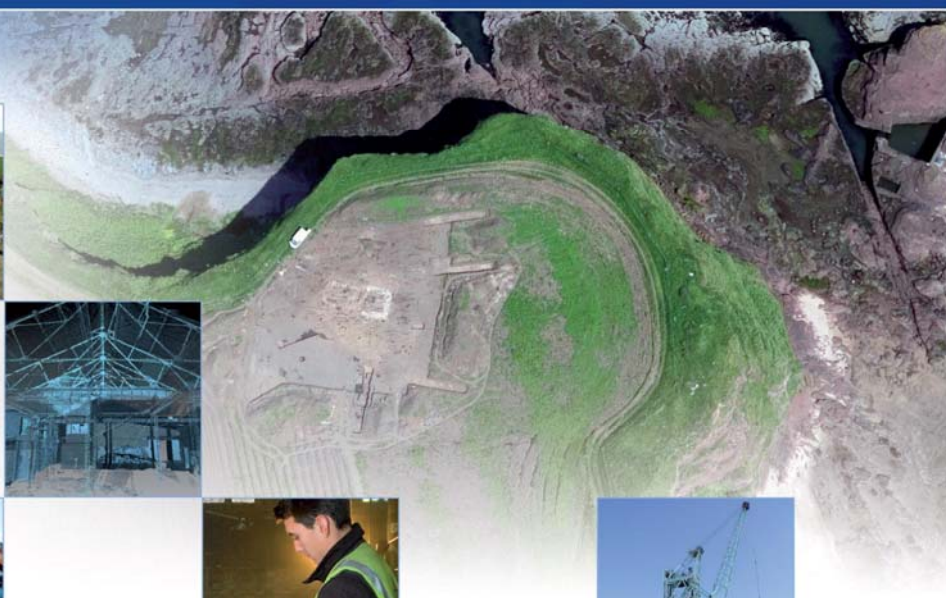


# Results of archaeological trial trenching at Mains Farm, North Berwick Data Structure Report

OASIS No. aocarcha1-145147

14<sup>th</sup> March 2013



# Results of archaeological trial trenching at Mains Farm, North Berwick

## Data Structure Report

---

**On Behalf of:** CgMs Consulting,  
Planning, Archaeology & Historic Buildings  
Consultants  
9-10 St Andrew Square,  
Edinburgh  
EH2 2AF

**National Grid Reference (NGR):** NT 5470 8425

**AOC Project No:** 21017

**Prepared by:** Lindsay Dunbar

**Illustration by:** Jake Streatfeild-James

**Date of Fieldwork:** 25<sup>th</sup> February - 6<sup>th</sup> March 2013

**Date of Report:** 8<sup>th</sup> March 2013

This document has been prepared in accordance with AOC standard operating procedures.

**Author:** Lindsay Dunbar

**Date:** 07/03/2013

**Approved by:** Martin Cook

**Date:** 14/03/2013

**Draft Report Stage:**

**Date:**

**Enquiries to:** AOC Archaeology Group  
Edgefield Industrial Estate  
Edgefield Road  
Loanhead  
EH20 9SY

Tel. 0131 440 3593  
Fax. 0131 440 3422  
e-mail. [admin@aocarchaeology.com](mailto:admin@aocarchaeology.com)

## Contents

	Page
List of illustrations.....	3
List of plates.....	3
List of appendices.....	3
Abstract.....	4
<b>1 INTRODUCTION</b> .....	<b>5</b>
<b>1.1 Project Background</b> .....	<b>5</b>
<b>1.2 Site Location</b> .....	<b>5</b>
<b>1.3 Archaeological background</b> .....	<b>5</b>
<b>2 OBJECTIVES</b> .....	<b>5</b>
<b>3 METHOD</b> .....	<b>6</b>
<b>4 RESULTS</b> .....	<b>7</b>
<b>5 CONCLUSION</b> .....	<b>8</b>
<b>6 RECOMMENDATIONS</b> .....	<b>9</b>
<b>8 REFERENCES</b> .....	<b>9</b>
APPENDIX 1: TRENCH SUMMARIES.....	11
APPENDIX 2: PHOTOGRAPHIC REGISTER.....	21
APPENDIX 3: FINDS REGISTER.....	21
APPENDIX 4: 'DISCOVERY AND EXCAVATION IN SCOTLAND' REPORT.....	29

## List of illustrations

Figure 1: Site location

Figure 2: Trench Location

## List of plates

Plate 1: Trench 34 post-excavation

Plate 2: Trench 24 showing stone backfill of ceramic drain

## List of appendices

Appendix 1 Trench Summaries

Appendix 2 Photographic Register

Appendix 3 Finds Register

Appendix 3 *'Discovery and Excavation in Scotland'* Entry

## Abstract

---

AOC Archaeology Group was commissioned by CgMs Consulting, acting on behalf of their client (Walker Group Ltd), to undertake an archaeological evaluation on a proposed development site at Mains Farm, North Berwick, East Lothian. The development is located on a greenfield site and covers up to 37 ha of which the northern 22 ha was to be significantly impacted upon by the development and hence was subject to an 8% evaluation by trial trenching. The scope of works was agreed with East Lothian Council Archaeology Service (ELCAS) and set out in a Written Scheme of Investigation (WSI). It was undertaken prior to submission of the planning application. In total 84 trenches covering more than 18,300 m<sup>2</sup> were opened. A Heritage Assessment (CgMs 2013) noted that whilst no known sites of archaeological interest lay within the development boundary there was potential for hitherto unknown archaeological sites to be under threat from the proposed development. However the evaluation did not uncover any significant archaeological features. A simple stratigraphic sequence of thin topsoil derived from a firm glacial till was recorded. Areas of standing water and the presence of numerous field drains suggested that historically the ground has been relatively poorly drained. A limited assemblage of unstratified artefacts recovered from topsoil during the evaluation suggested that ploughing on the site, evidenced by the plough scarring found in many of the trenches, had not truncated or completely removed any significant archaeological deposits. In summary, no significant archaeological finds or features were encountered during the evaluation and it is concluded that this reflects historic land-use being restricted to agriculture rather than settlement.

# 1 INTRODUCTION

## 1.1 Project Background

- 1.1.1 AOC Archaeology Group was commissioned by CgMs Consulting acting on behalf of the Walker Group Ltd. to undertake an archaeological evaluation on a proposed development at Mains Farm, North Berwick, East Lothian. The proposed development lies within the administrative area of East Lothian Council which is advised on archaeological matters by East Lothian Council Archaeology Service (ELCAS). In accordance with government guidance on archaeology and planning (PAN 2/2011) and more specifically in response to East Lothian Council's requirements set out in a Development Framework and SEA Environmental Report (28/6/11 and 28/6/12), which contained requirements to investigate the proposed development site's archaeological potential, this report will be submitted as supplementary information in support of a planning application.
- 1.1.2 The objective of the archaeological works was to determine the existence of any buried archaeological remains within the development area by means of a programme of trial trenching. A Heritage Assessment and Written Scheme of Investigation (CgMs, January 2013) outlining the programme of archaeological works was agreed with East Lothian Council Archaeology Service on behalf of East Lothian Council in advance of the evaluation being undertaken. The assessment contains details of the planning background and a full consideration of potential impacts associated with the proposed development.

## 1.2 Site Location

- 1.2.1 The proposed development area occupies agricultural land lying to the southwest side of the town of North Berwick close to the Primary School and due west of Berwick Law, which overlooks the development area. The site is approximately 37 hectares in extent and is bounded to the north by Grange Road, with predominantly modern housing on its north side, and the B1347 (Haddington Road) on part of its east side (Fig.1). Elsewhere it is bordered by arable land and an active drainage ditch to the south. The site occupies most of three arable fields separated by post and wire fencing. External boundaries are formed by hedges; an overhead utility, supported on wooden posts, crosses in the south. The topography is undulating with a noticeable knoll extending into the southeast of the site from beneath the B1347 at a height of 59.5 m OD; gentle slopes extend away from this knoll to 44 m OD in the northwest.

## 1.3 Site & Archaeological Background

- 1.3.1 A desk based assessment of the application area was completed by CgMs Consulting (CgMs 2013). The desk based assessment summarised the available evidence and concluded that the proposed development area had a moderate potential to contain previously unrecorded sub-surface archaeological remains. However, it also noted that the most likely area where such remains may be present was on higher ground in the south, which fell within a zone of the development left as open space, where there would be little sub-surface impact and hence was not within the area selected for evaluation. The full assessment is not repeated here.

# 2 OBJECTIVES



2.1 The objectives of the archaeological works were:

- i) to determine the presence or absence of any archaeological remains that could be subject to disturbance during development
- ii) if present to determine the nature, extent and significance of any remains in order to inform an appropriate mitigation strategy (likely to be preservation by record, ie. excavation, analysis and dissemination of results)

### 3 METHOD

3.1 The *Written Scheme of Investigation* (CgMs 2013) proposed the excavation of trenches equating to an 8% sample of the application area minus areas that will not be directly impacted upon by the proposed development. Of the 37 ha application area the northern portion that required evaluation covered an area of c.22.0 ha for which a 8% sample evaluation would require the excavation of trenching up to 17,600 m<sup>2</sup> (total basal trench dimensions).



Plate 1 - Trench 34 Post-excavation

3.2 In total eighty-four trenches were excavated which totalled 18,320 m<sup>2</sup> which equates to a little over a 8.3% sample of the development area.



**Plate 2 - Trench 24 showing stone backfill of ceramic drain**

- 3.3 All trenches were excavated with a 17-22 tonne tracked excavators using ditching buckets measuring 2.0 m and 2.4 m. The trench details are summarised in Appendix 1. Machine excavation was conducted in shallow units/spits through topsoil/overburden to the upper surface of the underlying geological deposits. The evaluation trial trenching was undertaken according to AOC Archaeology Group's standard operating procedures and as detailed within the *Written Scheme of Investigation* (CgMs 2013).

## **4 RESULTS**

- 4.1 The various data gathered from the evaluation is presented as a series of appendices

- i) Appendix 1 contains the trench summaries
- ii) Appendix 2 contains the photographic register
- iii) Appendix 3 contains finds register



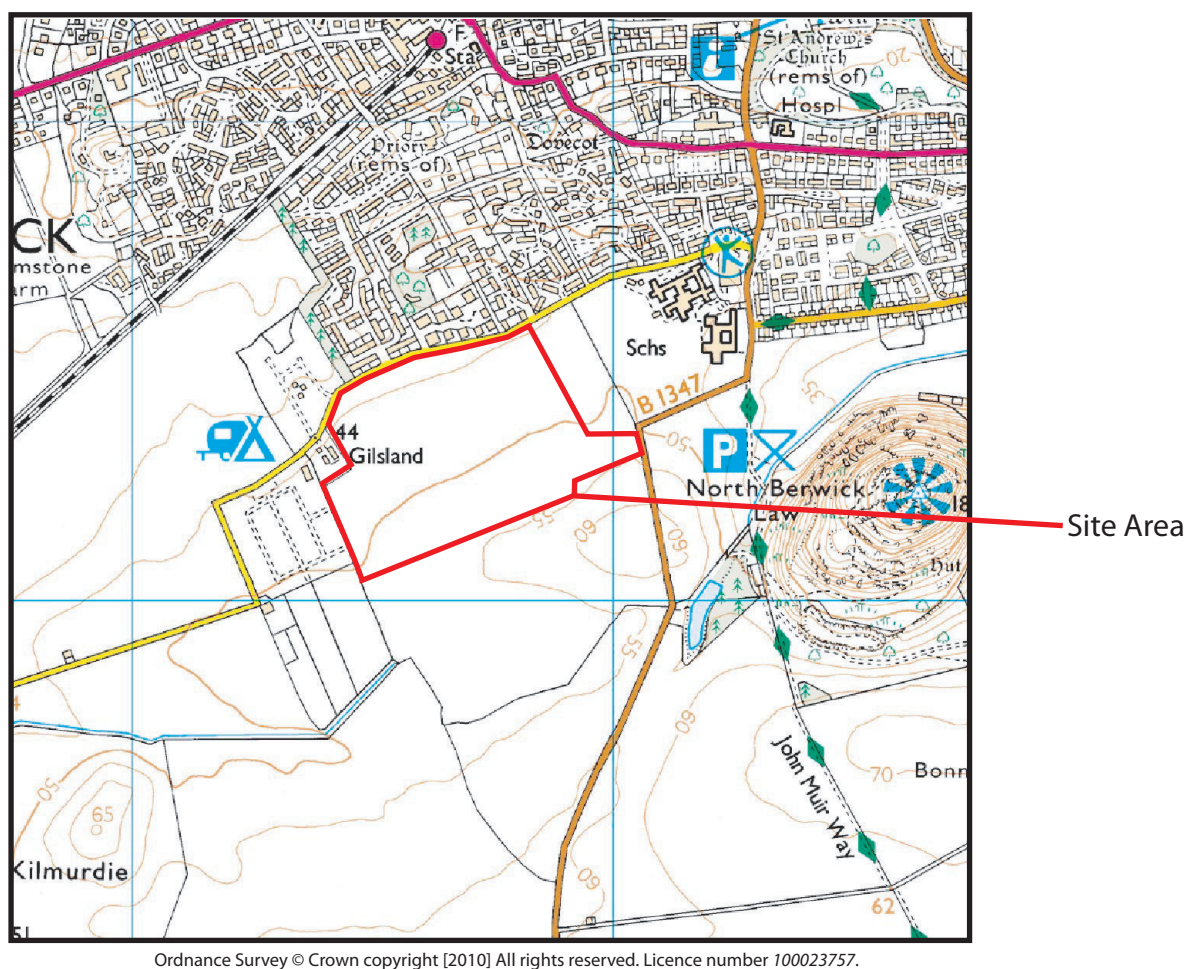
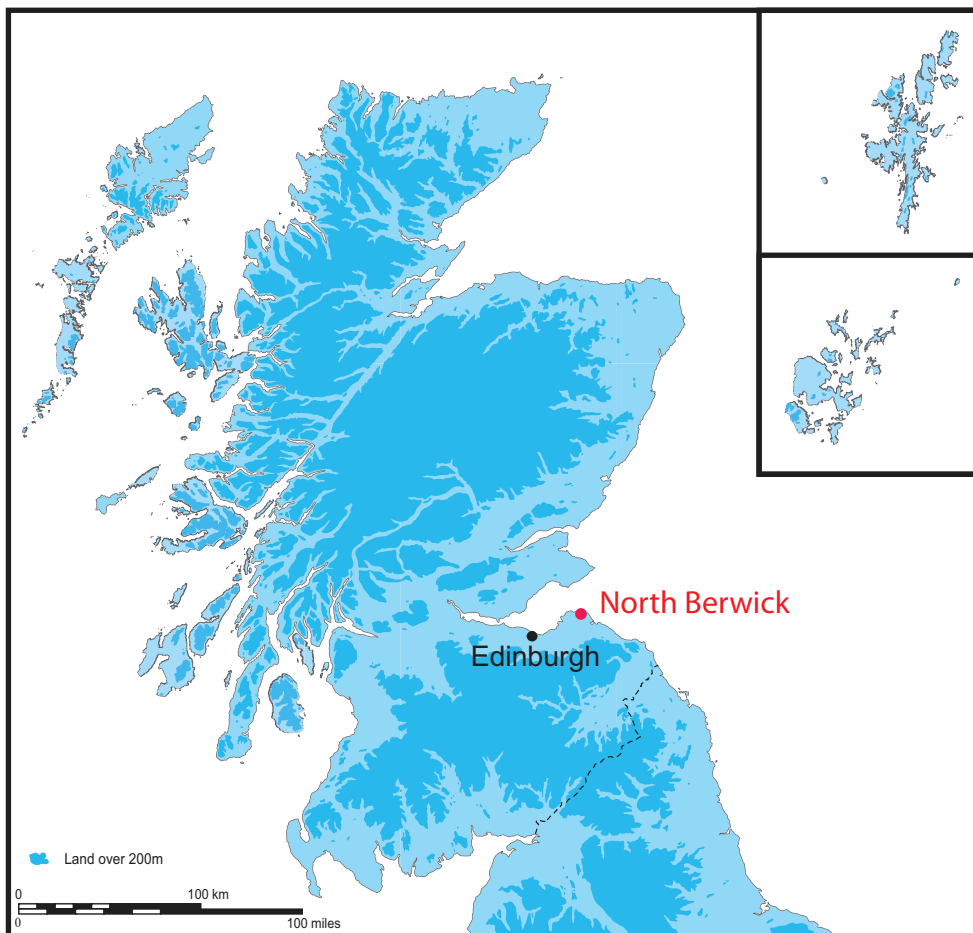






Figure 1: Location of the site at North Mains Farm





(Based on a drawing provided by the client)

AOC 21017 - North Mains Farm

-  Waterlogged Ground
-  Path
-  Trial Trench
-  Field Drains

1:3000 at A3

Figure 2: Trenching Plan

iv) Appendix 4 reproduces the '*Discovery and Excavation in Scotland*' entry

- 4.2 The works were conducted between 25<sup>th</sup> February and 6<sup>th</sup> March 2013. The weather conditions during the evaluation were mostly clear and dry. Overall archaeological visibility was good. In total eighty-four trenches were opened totalling 18,320 m<sup>2</sup> (Figure 2).
- 4.3 The proposed development was covered by a clay rich agricultural topsoil varying in depth from 0.23 m to 0.45 m in depth. As to be expected the topsoil was generally shallower on the higher ground and slopes to the south and deeper to the north. In the southern area there was extensive plough scarring across most of the trenches. The geological subsoil was predominantly orange/pink/grey boulder clay with patches of sandier material.
- 4.4 In the area immediately north of Trench 42 there was a large area of standing water up to c0.3 m deep. The area to the north of this was especially soft and muddy and drainage was obviously a on-going issue. On the western side of the site there was another local area of poor drainage with pockets of standing water. In general, the northern half of the evaluation area was crossed by a systematic pattern of ceramic drains. The higher ground to the south had a few drains present but the main drainage issues were clearly on the lower lying ground to the north.
- 4.5 No archaeological features were identified during the evaluation with the area examined proving to be archaeologically sterile. It is also of note that despite being conducted in a recently ploughed field, the evaluation did not yield any unstratified finds of significance, producing only a very small assemblage of water washed flint nodules and two likely plough-struck flint flakes. A single sherd of heavily abraded post-medieval reduced ware with a date range of 16<sup>th</sup> to 18<sup>th</sup> century was also recovered. The limited number of unstratified finds was suggestive that little activity, other than agriculture, had occurred in this area.

## 5 CONCLUSION

- 5.1 The evaluation has not uncovered any significant *in situ* archaeological deposits or features. The evaluation revealed various drains, on differing alignments and of different types, suggesting at least two phases and possibly more of agricultural land improvement. The drains were especially prevalent in the lower lying northern part of the development area. Moving south to the higher ground the drains are less frequent.
- 5.2 This north to south pattern is mirrored with the noted plough scarring, which was more common over the higher ground where the topsoil was noticeably thinner, than the lower lying ground to the north. The very limited nature of the unstratified finds assemblage did not attest to any prehistoric activity and it is concluded that any plough truncation occurring over the higher ground has not led to the disturbance and complete removal of any significant archaeological features.
- 5.3 It is further suggested that the generally thin topsoil over firm, and poorly draining, glacial till appears to have limited any prehistoric and later activity on the site. The balance of probability is that the development area is archaeologically sterile and the evaluation is concluded to have established an absence of archaeological remains.

## 6 RECOMMENDATIONS

- 6.1 The evaluation has achieved its agreed objective, namely establishing an absence of archaeological remains within the area subject to disturbance in the proposed development. Therefore, it is recommended that no further archaeological works are undertaken in connection with the planning application associated with the site.

## 7 REFERENCES

CgMs 2013 *Heritage Assessment, Mains Farm, North Berwick*, CgMs Consulting client report

CgMs 2013 *Heritage Assessment, Mains Farm, North Berwick Written Scheme of Investigation*, CgMs Consulting client report

Scottish Government 2010 *Scottish Planning Policy*.

Scottish Government 2011 *PAN 2/2011 2/2011 Planning and Archaeology*.

# **Results of archaeological trial trenching at Mains Farm, North Berwick Data Structure Report**

## **Section 2: Appendices**



## APPENDIX 1: TRENCH SUMMARIES

### Trench 1

Dimensions	102 m by 2.4 m
Orientation	NE-SW
Depth of Topsoil	0.25 m to 0.31 m
Features	None
Drains	None
Subsoil	Orange/pink clays with patches of sand
Finds	None

### Trench 2

Dimensions	101 m by 2.4 m
Orientation	c.N-S
Depth of Topsoil	0.28 m to 0.32 m
Features	None
Drains	N-S aligned ceramic drains covered by gravel/broken stone at c.10-12 m intervals
Subsoil	Orange/pink clays with patches of sand
Finds	None

### Trench 3

Dimensions	100 m by 2.0 m
Orientation	c.E-W
Depth of Topsoil	0.25 m to 0.30 m
Features	None
Drains	N-S aligned ceramic drains covered by gravel/broken stone at c.10-12 m intervals
Subsoil	Orange/pink clays with patches of sand
Finds	None

### Trench 4

Dimensions	100 m by 2.0 m
Orientation	c.N-S
Depth of Topsoil	0.25 m to 0.31 m
Features	None
Drains	N-S aligned ceramic drains covered by gravel/broken stone at c.10-12 m intervals
Subsoil	Orange/pink clays with patches of sand
Finds	None

### Trench 5

Dimensions	101 m by 2.0 m
Orientation	NE-SW
Depth of Topsoil	0.31 m to 0.35 m
Features	None
Drains	N-S aligned ceramic drains covered by gravel/broken stone at c.10-12 m intervals
Subsoil	Orange/brown/pink clays with patches of sand
Finds	None

### Trench 6

Dimensions	100 m by 2.4 m
------------	----------------

Orientation	E-W
Depth of Topsoil	0.25 m to 0.28 m
Features	None
Drains	N-S aligned ceramic drains covered by gravel/broken stone at c.10-12 m intervals
Subsoil	Orange/brown/pink clays with patches of sand
Finds	None

**Trench 7**

Dimensions	101 m by 2.0 m
Orientation	c.E-W
Depth of Topsoil	0.36 m to 0.40 m
Features	None
Drains	N-S aligned ceramic drains covered by gravel/broken stone at c.10-12 m intervals
Subsoil	Orange/brown/pink clays with patches of sand
Finds	None

**Trench 8**

Dimensions	100 m by 2.4 m
Orientation	c.NE-SW
Depth of Topsoil	0.25 m to 0.27 m
Features	None
Drains	N-S aligned ceramic drains covered by gravel/broken stone at c.10-12 m intervals
Subsoil	Orange/brown/pink clays with patches of sand
Finds	None

**Trench 9**

Dimensions	102 m by 2.0 m
Orientation	N-S
Depth of Topsoil	0.32 m to 0.39 m
Features	None
Drains	N-S aligned ceramic drains covered by gravel/broken stone at c.10-12 m intervals
Subsoil	Orange/brown/pink clays with patches of sand
Finds	None

**Trench 10**

Dimensions	100 m by 2.4 m
Orientation	c.E-W
Depth of Topsoil	0.24 m to 0.28 m
Features	None
Drains	N-S aligned ceramic drains covered by gravel/broken stone at c.10-12 m intervals
Subsoil	Orange/brown/pink clays with patches of sand
Finds	None

**Trench 11**

Dimensions	100 m by 2.0 m
Orientation	c.NE-SW
Depth of Topsoil	0.35 m to 0.40 m
Features	None
Drains	N-S aligned ceramic drains covered by gravel/broken stone at c.10-12 m intervals

Subsoil	Orange/brown/pink clays with patches of sand
Finds	None

**Trench 12**

Dimensions	101 m by 2.4 m
Orientation	c.E-W
Depth of Topsoil	0.28 m to 0.35 m
Features	None
Drains	N-S aligned ceramic drains covered by gravel/broken stone at c.10-12 m intervals
Subsoil	Orange/brown/pink clays with patches of sand
Finds	None

**Trench 13**

Dimensions	100 m by 2.0 m
Orientation	c.E-W
Depth of Topsoil	0.33 m to 0.40 m
Features	None
Drains	N-S aligned ceramic drains covered by gravel/broken stone at c.10-12 m intervals
Subsoil	Orange/brown/pink clays with patches of sand
Finds	None

**Trench 14**

Dimensions	100 m by 2.4 m
Orientation	c.N-S
Depth of Topsoil	0.27 m to 0.35 m
Features	None
Drains	N-S aligned ceramic drains covered by gravel/broken stone at c.10-12 m intervals
Subsoil	Orange/brown/pink clays with patches of sand
Finds	None

**Trench 15**

Dimensions	100 m by 2.0 m
Orientation	E-W
Depth of Topsoil	0.30 m to 0.31 m
Features	None
Drains	N-S aligned ceramic drains covered by gravel/broken stone at c.10-12 m intervals
Subsoil	Orange/brown/pink clays with patches of sand
Finds	None

**Trench 16**

Dimensions	100 m by 2.4 m
Orientation	c.E-W
Depth of Topsoil	0.26 m to 0.32 m
Features	None
Drains	N-S aligned ceramic drains covered by gravel/broken stone at c.10-12 m intervals
Subsoil	Grey/brown clays with patches of sand
Finds	None

**Trench 17**

Dimensions	101 m by 2.0 m
Orientation	c.E-W
Depth of Topsoil	0.28 m to 0.38 m
Features	None
Drains	N-S aligned ceramic drains covered by gravel/broken stone at c.10-12 m intervals
Subsoil	Orange/brown/pink clays with patches of sand
Finds	None

**Trench 18**

Dimensions	90 m by 2.4 m
Orientation	c.E-W
Depth of Topsoil	0.26 m to 0.30 m
Features	None
Drains	N-S aligned ceramic drains covered by gravel/broken stone at c.10-12 m intervals
Subsoil	Orange/brown clays with patches of sand
Finds	None

**Trench 19**

Dimensions	100 m by 2.0 m
Orientation	NE-SW
Depth of Topsoil	0.29 m to 0.30 m
Features	None
Drains	N-S aligned ceramic drains covered by gravel/broken stone at c.10-12 m intervals
Subsoil	Orange/brown/pink clays with patches of sand
Finds	None

**Trench 20**

Dimensions	100 m by 2.4 m
Orientation	c.E-W
Depth of Topsoil	0.25 m to 0.29 m
Features	None
Drains	N-S aligned ceramic drains covered by gravel/broken stone at c.10-12 m intervals
Subsoil	Orange/brown clays with patches of sand
Finds	None

**Trench 21**

Dimensions	100 m by 2.0 m
Orientation	c.NE-SW
Depth of Topsoil	0.28 m to 0.37 m
Features	None
Drains	N-S aligned ceramic drains covered by gravel/broken stone at c.10-12 m intervals
Subsoil	Orange/brown/pink clays with patches of sand
Finds	None

**Trench 22**

Dimensions	100 m by 2.4 m
Orientation	E-W
Depth of Topsoil	0.24 m to 0.27 m
Features	None

Drains	N-S aligned ceramic drains covered by gravel/broken stone at c.10-12 m intervals
Subsoil	Orange/brown clays with patches of sand
Finds	None

### **Trench 23**

Dimensions	101 m by 2.0 m
Orientation	c.E-W
Depth of Topsoil	0.32 m to 0.38 m
Features	None
Drains	N-S aligned ceramic drains covered by gravel/broken stone at c.10-12 m intervals
Subsoil	Orange/brown/pink clays with patches of sand
Finds	None

### **Trench 24**

Dimensions	100 m by 2.0 m
Orientation	c.NE-SW
Depth of Topsoil	0.30 m to 0.32 m
Features	None
Drains	N-S aligned ceramic drains covered by gravel/broken stone at c.10-12 m intervals
Subsoil	Orange/brown/pink clays with patches of sand
Finds	None

### **Trench 25**

Dimensions	100 m by 2.0 m
Orientation	E-W
Depth of Topsoil	0.25 m to 0.36 m
Features	None
Drains	N-S aligned ceramic drains covered by gravel/broken stone at c.10-12 m intervals
Subsoil	Orange/brown/pink clays with patches of sand
Finds	None

### **Trench 26**

Dimensions	120 m by 2.4 m
Orientation	NW-SE
Depth of Topsoil	0.30 m to 0.35 m
Features	None
Drains	N-S aligned ceramic drains covered by gravel/broken stone at c.10-12 m intervals
Subsoil	Orange/brown/pink clays with patches of sand
Finds	None

### **Trench 27**

Dimensions	105 m by 2.0 m
Orientation	c.N-S
Depth of Topsoil	0.29 m to 0.31 m
Features	N-S plough scarring visible
Drains	N-S aligned ceramic drains covered by gravel/broken stone at c.10-12 m intervals
Subsoil	Orange/brown/pink clays with patches of sand
Finds	None



**Trench 28**

Dimensions	101 m by 2.4 m
Orientation	c.NW-SE
Depth of Topsoil	0.36 m to 0.37 m
Features	N-S plough scarring visible
Drains	N-S aligned ceramic drains covered by gravel/broken stone at c.10-12 m intervals
Subsoil	Orange/pink clays
Finds	None

**Trench 29**

Dimensions	100 m by 2.0 m
Orientation	NE-SW
Depth of Topsoil	0.30 m to 0.35 m
Features	N-S plough scarring visible
Drains	N-S aligned ceramic drains covered by gravel/broken stone at c.10-12 m intervals
Subsoil	Orange/brown/pink clays with patches of sand
Finds	None

**Trench 30**

Dimensions	105 m by 2.4 m
Orientation	c.E-W
Depth of Topsoil	0.37 m to 0.39 m
Features	None
Drains	N-S aligned ceramic drains covered by gravel/broken stone at c.10-12 m intervals
Subsoil	Orange/ pink clays with patches of sand
Finds	1 x unstratified flint chunk

**Trench 31**

Dimensions	100 m by 2.0 m
Orientation	c.NE-SW
Depth of Topsoil	0.30 m to 0.34 m
Features	None
Drains	N-S aligned ceramic drains covered by gravel/broken stone at c.10-12 m intervals
Subsoil	Orange/brown/pink clays with patches of sand
Finds	None

**Trench 32**

Dimensions	100 m by 2.4 m
Orientation	c.NE-SW
Depth of Topsoil	0.37 m to 0.39 m
Features	None
Drains	N-S aligned ceramic drains covered by gravel/broken stone at c.10-12 m intervals
Subsoil	Orange/brown/pink clays with patches of sand
Finds	None

**Trench 33**

Dimensions	100 m by 2.0 m
------------	----------------

Orientation	E-W
Depth of Topsoil	0.28 m to 0.35 m
Features	None
Drains	N-S aligned ceramic drains covered by gravel/broken stone at c.10-12 m intervals
Subsoil	Orange/brown/pink clays with patches of sand
Finds	None

**Trench 34**

Dimensions	121 m by 2.4 m
Orientation	c.E-W
Depth of Topsoil	0.35 m to 0.39 m
Features	N-S plough scarring visible
Drains	N-S aligned ceramic drains covered by gravel/broken stone at c.10-12 m intervals
Subsoil	Orange/brown/pink clays with patches of sand
Finds	None

**Trench 35**

Dimensions	100 m by 2.0 m
Orientation	c.E-W
Depth of Topsoil	0.38 m to 0.40 m
Features	None
Drains	N-S aligned ceramic drains covered by gravel/broken stone at c.10-12 m intervals
Subsoil	Orange/brown/pink clays with patches of sand
Finds	None

**Trench 36**

Dimensions	104 m by 2.4 m
Orientation	c.E-W
Depth of Topsoil	0.36 m to 0.37 m
Features	N-S plough scarring visible
Drains	N-S aligned ceramic drains covered by gravel/broken stone at c.10-12 m intervals
Subsoil	Orange/brown/pink clays with patches of sand
Finds	Unstratified flint flake

**Trench 37**

Dimensions	100 m by 2.0 m
Orientation	c.E-W
Depth of Topsoil	0.26 m to 0.33 m
Features	N-S plough scarring visible
Drains	N-S aligned ceramic drains covered by gravel/broken stone at c.10-12 m intervals
Subsoil	Orange/brown/pink clays with patches of sand
Finds	None

**Trench 38**

Dimensions	100 m by 2.4 m
Orientation	NW-SE
Depth of Topsoil	0.36 m to 0.38 m
Features	N-S plough scarring visible
Drains	N-S aligned ceramic drains covered by gravel/broken stone at c.10-12 m intervals
Subsoil	Orange/brown/pink clays with patches of sand

Finds                      None

### **Trench 39**

Dimensions              100 m by 2.0 m  
Orientation              c.N-S  
Depth of Topsoil        0.30 m to 0.31 m  
Features                  N-S plough scarring visible  
Drains                    N-S aligned ceramic drains covered by gravel/broken stone at c.10-12 m intervals  
Subsoil                   Orange/brown/pink clays with patches of sand  
Finds                      None

### **Trench 40**

Dimensions              102 m by 2.4 m  
Orientation              c.N-S  
Depth of Topsoil        0.36 m to 0.38 m  
Features                  N-S plough scarring visible  
Drains                    N-S aligned ceramic drains covered by gravel/broken stone at c.10-12 m intervals  
Subsoil                   Orange/brown/pink clays with patches of sand  
Finds                      Unstratified heavily abraded sherd of post-medieval reduced ware

### **Trench 41**

Dimensions              100 m by 2.0 m  
Orientation              c.NE-SW  
Depth of Topsoil        0.29 m to 0.32 m  
Features                  N-S plough scarring visible  
Drains                    N-S aligned ceramic drains covered by gravel/broken stone at c.10-12 m intervals  
Subsoil                   Orange/brown/pink clays with patches of sand  
Finds                      None

### **Trench 42**

Dimensions              100 m by 2.4 m  
Orientation              NE-SW  
Depth of Topsoil        0.32 m to 0.33 m  
Features                  N-S plough scarring visible  
Drains                    N-S aligned ceramic drains covered by gravel/broken stone at c.10-12 m intervals  
Subsoil                   Orange/brown/pink clays with patches of sand  
Finds                      1 x unstratified flint chunk

### **Trench 43**

Dimensions              100 m by 2.0 m  
Orientation              c.NE-SW  
Depth of Topsoil        0.36 m to 0.38 m  
Features                  N-S plough scarring visible  
Drains                    N-S aligned ceramic drains covered by gravel/broken stone at c.10-12 m intervals  
Subsoil                   Orange/brown/pink clays with patches of sand  
Finds                      None

**Trench 44**

Dimensions	141 m by 2.4 m
Orientation	c.NE-SW
Depth of Topsoil	0.36 m to 0.38 m
Features	N-S plough scarring visible
Drains	N-S aligned ceramic drains covered by gravel/broken stone at c.10-12 m intervals
Subsoil	Orange/ /pink clays
Finds	None

**Trench 45**

Dimensions	100 m by 2.0 m
Orientation	c.N-S
Depth of Topsoil	0.26 m to 0.31 m
Features	N-S plough scarring visible
Drains	N-S aligned ceramic drains covered by gravel/broken stone at c.10-12 m intervals plus single E-W rubble drain
Subsoil	Orange/brown/pink clays with patches of sand
Finds	None

**Trench 46**

Dimensions	104 m by 2.4 m
Orientation	c.NE-SW
Depth of Topsoil	0.32 m to 0.38 m
Features	N-S plough scarring visible
Drains	N-S aligned ceramic drains covered by gravel/broken stone at c.10-12 m intervals
Subsoil	Orange/brown/pink clays with patches of sand
Finds	None

**Trench 47**

Dimensions	100 m by 2.0 m
Orientation	c.NE-SW
Depth of Topsoil	0.36 m to 0.38 m
Features	N-S plough scarring visible
Drains	N-S aligned ceramic drains covered by gravel/broken stone at c.10-12 m intervals plus single E-W rubble drain.
Subsoil	Orange/brown/pink clays with patches of sand
Finds	None

**Trench 48**

Dimensions	103 m by 2.4 m
Orientation	c.E-W
Depth of Topsoil	0.36 m to 0.38 m
Features	N-S plough scarring visible
Drains	N-S aligned ceramic drains covered by gravel/broken stone at c.10-12 m intervals
Subsoil	Orange/brown/pink clays with patches of sand
Finds	None

**Trench 49**

Dimensions	100 m by 2.0 m
Orientation	c.E-W

Depth of Topsoil	0.30 m to 0.33 m
Features	N-S plough scarring visible
Drains	N-S aligned ceramic drains covered by gravel/broken stone at c.10-12 m intervals
Subsoil	Orange/brown/pink clays with patches of sand
Finds	Unstratified water washed flint x 1

**Trench 50**

Dimensions	100 m by 2.4 m
Orientation	c.E-W
Depth of Topsoil	0.31 m to 0.35 m
Features	N-S plough scarring visible
Drains	N-S aligned ceramic drains covered by gravel/broken stone at c.10-12 m intervals
Subsoil	Orange/pink clays with patches of sand
Finds	None

**Trench 51**

Dimensions	100 m by 2.0 m
Orientation	c.NE-SW
Depth of Topsoil	0.40 m
Features	N-S plough scarring visible
Drains	N-S aligned ceramic drains covered by gravel/broken stone at c.10-12 m intervals plus two E-W rubble drains
Subsoil	Orange/brown/pink clays with patches of sand
Finds	None

**Trench 52**

Dimensions	102 m by 2.4 m
Orientation	N-S
Depth of Topsoil	0.36 m to 0.40 m
Features	None
Drains	N-S aligned ceramic drains covered by gravel/broken stone at c.10-12 m intervals plus two E-W rubble drains
Subsoil	Orange/brown/pink clays with patches of sand
Finds	None

**Trench 53**

Dimensions	100 m by 2.0 m
Orientation	c.NE-SW
Depth of Topsoil	0.32 m to 0.38 m
Features	N-S plough scarring visible
Drains	None
Subsoil	Orange/brown/pink clays with patches of sand
Finds	None

**Trench 54**

Dimensions	123 m by 2.4 m
Orientation	E-W
Depth of Topsoil	0.38 m to 0.41 m
Features	N-S plough scarring visible
Drains	A NE-SW aligned rubble drain



Subsoil	Orange/brown/pink clays with patches of sand
Finds	None

**Trench 55**

Dimensions	50 m by 2.0 m
Orientation	NW-SE
Depth of Topsoil	0.31 m to 0.34 m
Features	N-S plough scarring visible
Drains	None
Subsoil	Orange/brown/pink clays with patches of sand
Finds	1x unstratified flint chunk

**Trench 56**

Dimensions	101 m by 2.4 m
Orientation	c.E-W
Depth of Topsoil	0.36 m to 0.38 m
Features	N-S plough scarring visible
Drains	N-S aligned ceramic drains covered by gravel/broken stone at c.10-12 m intervals plus single E-W aligned rubble drain
Subsoil	Orange/brown/pink clays with patches of sand
Finds	None

**Trench 57**

Dimensions	100 m by 2.0 m
Orientation	NE-SW
Depth of Topsoil	0.32 m to 0.31 m
Features	N-S plough scarring visible
Drains	None
Subsoil	Orange/brown/pink clays with patches of sand
Finds	None

**Trench 58**

Dimensions	107 m by 2.4 m
Orientation	NW-SE
Depth of Topsoil	0.36 m to 0.38 m
Features	N-S plough scarring visible
Drains	N-S aligned ceramic drains covered by gravel/broken stone at c.10-12 m intervals plus single E-W aligned rubble drain
Subsoil	Orange/brown/pink clays with patches of sand
Finds	None

**Trench 59**

Dimensions	100 m by 2.0 m
Orientation	E-W
Depth of Topsoil	0.30 m to 0.33 m
Features	N-S plough scarring visible
Drains	None
Subsoil	Orange/brown/pink clays with patches of sand
Finds	None

**Trench 60**

Dimensions	72 m by 2.4 m
Orientation	NW-SE
Depth of Topsoil	0.36 m to 0.38 m
Features	N-S plough scarring visible
Drains	N-S aligned ceramic drains covered by gravel/broken stone at c.10-12 m intervals plus a NW-SE rubble drain
Subsoil	Orange/brown/pink clays with patches of sand
Finds	None

**Trench 61**

Dimensions	100 m by 2.0 m
Orientation	E-W
Depth of Topsoil	0.29 m to 0.32 m
Features	N-S plough scarring visible
Drains	None
Subsoil	Orange/brown/pink clays with patches of sand
Finds	None

**Trench 62**

Dimensions	88 m by 2.4 m
Orientation	NW-SE
Depth of Topsoil	0.33 m to 0.37 m
Features	N-S plough scarring visible
Drains	N-S aligned ceramic drains covered by gravel/broken stone at c.10-12 m intervals plus two E-W aligned rubble drains
Subsoil	Orange/brown/pink clays with patches of sand
Finds	None

**Trench 63**

Dimensions	100 m by 2.0 m
Orientation	NW-SE
Depth of Topsoil	0.36 m to 0.38 m
Features	N-S plough scarring visible
Drains	Single E-W aligned rubble drain
Subsoil	Orange/pink clays with patches of sand
Finds	None

**Trench 64**

Dimensions	86 m by 2.4 m
Orientation	NE-SW
Depth of Topsoil	0.36 m to 0.39 m
Features	N-S plough scarring visible
Drains	N-S aligned ceramic drains covered by gravel/broken stone at c.10-12 m intervals
Subsoil	Orange/brown/pink clays with patches of sand
Finds	None

**Trench 65**

Dimensions	100 m by 2.0 m
Orientation	NE-SW

Depth of Topsoil	0.30 m to 0.35 m
Features	N-S plough scarring visible
Drains	None
Subsoil	Orange/brown/pink clays with patches of sand
Finds	None

**Trench 66**

Dimensions	87 m by 2.4 m
Orientation	NE-SW
Depth of Topsoil	0.35 m to 0.37 m
Features	N-S plough scarring visible
Drains	N-S aligned ceramic drains covered by gravel/broken stone at c.10-12 m intervals
Subsoil	Orange/brown/pink clays with patches of sand
Finds	None

**Trench 67**

Dimensions	100 m by 2.0 m
Orientation	NW-SE
Depth of Topsoil	0.34 m to 0.37 m
Features	N-S plough scarring visible
Drains	None
Subsoil	Orange/brown/pink clays with patches of sand
Finds	None

**Trench 68**

Dimensions	100 m by 2.4 m
Orientation	E-W
Depth of Topsoil	0.31 m to 0.36 m
Features	N-S plough scarring visible
Drains	None
Subsoil	Orange/grey/pink clays
Finds	1x unstratified flint chunk

**Trench 69**

Dimensions	100 m by 2.0 m
Orientation	c.E-W
Depth of Topsoil	0.28 m to 0.32 m
Features	N-S plough scarring visible
Drains	None
Subsoil	Orange/grey/pink clays with patches of sand
Finds	None

**Trench 70**

Dimensions	98 m by 2.4 m
Orientation	NW-SE
Depth of Topsoil	0.36 m to 0.38 m
Features	N-S plough scarring visible
Drains	None
Subsoil	Orange/grey/pink clays with patches of sand
Finds	None

**Trench 71**

Dimensions	100 m by 2.0 m
Orientation	C.NE-SW
Depth of Topsoil	0.24 m to 0.25 m
Features	N-S plough scarring visible
Drains	Single E-W aligned rubble drain
Subsoil	Orange/grey/pink clays with patches of sand
Finds	None

**Trench 72**

Dimensions	102 m by 2.4 m
Orientation	E-W
Depth of Topsoil	0.30 m to 0.34 m
Features	N-S plough scarring visible
Drains	None
Subsoil	Orange/grey/pink clays with patches of sand
Finds	None

**Trench 73**

Dimensions	100 m by 2.0 m
Orientation	NW-SE
Depth of Topsoil	0.27 m to 0.31 m
Features	N-S plough scarring visible
Drains	None
Subsoil	Orange/brown/pink clays with patches of sand
Finds	None

**Trench 74**

Dimensions	110 m by 2.4 m
Orientation	NE-SW
Depth of Topsoil	0.28 m to 0.33 m
Features	N-S plough scarring visible
Drains	Three N-S aligned ceramic drains
Subsoil	Orange/grey/pink clays with patches of sand
Finds	Unstratified water washed flint x 1

**Trench 75**

Dimensions	100 m by 2.0 m
Orientation	NE-SW
Depth of Topsoil	0.26 m to 0.33 m
Features	N-S plough scarring visible
Drains	None
Subsoil	Orange/grey/pink clays with patches of sand
Finds	None

**Trench 76**

Dimensions	76 m by 2.4 m
Orientation	c.E-W
Depth of Topsoil	0.30 m to 0.34 m

Features	N-S plough scarring visible
Drains	Single N-S aligned ceramic drain
Subsoil	Orange/grey/pink clays with patches of sand
Finds	None

**Trench 77**

Dimensions	100 m by 2.0 m
Orientation	NE-SW
Depth of Topsoil	0.28 m to 0.30 m
Features	N-S plough scarring visible
Drains	None
Subsoil	Orange/grey/pink clays with patches of sand
Finds	Unstratified water washed flint x 1

**Trench 78**

Dimensions	103 m by 2.4 m
Orientation	c.NE-SW
Depth of Topsoil	0.29 m to 0.32 m
Features	N-S plough scarring visible
Drains	Three N-S aligned ceramic drains
Subsoil	Orange/grey/pink clays with patches of sand
Finds	None

**Trench 79**

Dimensions	100 m by 2.0 m
Orientation	E-W
Depth of Topsoil	0.25 m to 0.28 m
Features	N-S plough scarring visible
Drains	Single E-W aligned rubble drain
Subsoil	Orange/grey/pink clays with patches of sand
Finds	1x unstratified flint flake

**Trench 80**

Dimensions	76 m by 2.4 m
Orientation	NW-SE
Depth of Topsoil	0.30 m to 0.33 m
Features	N-S plough scarring visible
Drains	Four N-S aligned ceramic drains
Subsoil	Orange/grey/pink clays with patches of sand
Finds	None

**Trench 81**

Dimensions	100 m by 2.0 m
Orientation	NE-SW
Depth of Topsoil	0.26 m to 0.29 m
Features	N-S plough scarring visible
Drains	None
Subsoil	Orange/grey/pink clays with patches of sand
Finds	None



**Trench 82**

Dimensions	100 m by 2.4 m
Orientation	NW-SE
Depth of Topsoil	0.28 m to 0.31 m
Features	N-S plough scarring visible
Drains	None
Subsoil	Orange/grey/pink clays with patches of sand
Finds	Unstratified water washed flint x 1

**Trench 83**

Dimensions	100 m by 2.0 m
Orientation	c.NE-SW
Depth of Topsoil	0.22 m to 0.27 m
Features	N-S plough scarring visible
Drains	None
Subsoil	Orange/grey/pink clays with patches of sand
Finds	1x flint chunk

**Trench 84**

Dimensions	100 m by 2.4 m
Orientation	c. E-W
Depth of Topsoil	0.36 m to 0.39 m
Features	N-S plough scarring visible
Drains	N-S aligned ceramic drains covered by gravel/broken stone at c.10-12 m intervals
Subsoil	Orange/brown/pink clays with patches of sand
Finds	None

## APPENDIX 2: PHOTOGRAPHIC REGISTER

### Black & White Print Film 1 & Digital

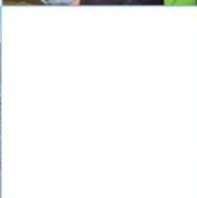
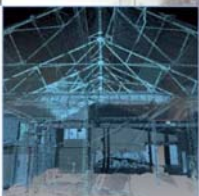
Frame	Trench	Description	From
1-2		Registration Shots	
3		Post-excavation view of Trench 78	SW
4		Post-excavation view of Trench 74 showing Ce drain	S
5		Post-excavation view of Trench 67	NE
6		Post-excavation view of Trench 71	NE
7		Post-excavation view of Trench 39	S
8		Post-excavation view of Trench 52	S
9		Post-excavation view of Trench 62 showing rubble filled drain	SW
10		Post-excavation view of Trench 34	W
11		Post-excavation view of Trench 48	W
12		Post-excavation view of Trench 2	SE
13		Post-excavation view of Trench 15	E
14		Post-excavation view of Trench 24	SW
15		Post-excavation view of Trench 16	W
16		Post-excavation view of Trench 24 showing drain	S
17		Post-excavation view of Trench 26	S
18		Post-excavation view of Trench 22	E
19-22		General views of site from East	Various
23-25		General views of path and trenches on south side of site	Various

## APPENDIX 3: FINDS REGISTER

Find No.	Context	Description
1	U/S	Unstratified topsoil finds of 4x flint chunks, 3x water washed flint pieces and 2x flakes.
2	U/S	Unstratified topsoil find of single sherd of abraded reduced ware

**APPENDIX 4: 'DISCOVERY AND EXCAVATION IN SCOTLAND' REPORT**

<b>LOCAL AUTHORITY:</b>	East Lothian Council
<b>PROJECT TITLE/SITE NAME:</b>	Mains Farm, North Berwick
<b>PROJECT CODE:</b>	AOC 21017
<b>PARISH:</b>	North Berwick
<b>NAME OF CONTRIBUTOR:</b>	Lindsay Dunbar
<b>NAME OF ORGANISATION:</b>	AOC Archaeology Group
<b>TYPE(S) OF PROJECT:</b>	Archaeological Evaluation
<b>NMRS NO(S):</b>	None
<b>SITE/MONUMENT TYPE(S):</b>	None
<b>SIGNIFICANT FINDS:</b>	None
<b>NGR (2 letters, 6 figures)</b>	NT 5470 8425
<b>START DATE (this season)</b>	25 <sup>th</sup> February 2013
<b>END DATE (this season)</b>	6 <sup>th</sup> March 2013
<b>PREVIOUS WORK (incl. DES ref.)</b>	None
<b>MAIN (NARRATIVE) DESCRIPTION:</b> (May include information from other fields)	AOC Archaeology Group undertook an archaeological evaluation on a proposed development at Mains Farm, North Berwick, East Lothian. The development is located over a greenfield site and covers up to 37 ha of which the northern 22 ha was to be significantly impacted upon and hence subject to an 8% evaluation. In total 84 trenches totaling more than 18,300 m <sup>2</sup> were opened. An earlier desk based assessment, noted that whilst no known sites of archaeological interest lay within the development boundary there was a potential for hitherto unknown archaeological sites to be under threat from the development. However the evaluation did not uncover any significant archaeological features. The ground conditions including areas of standing water and presence of numerous field drains suggests that historically the ground has been relatively poor. The limited assemblage of unstratified artefacts recovered during the evaluation suggests that the deep ploughing on site, evidenced by the plough scarring found in many of the trenches, has not truncated any significant archaeological deposits. In summary no significant archaeological finds or features were encountered during the evaluation.
<b>PROPOSED FUTURE WORK:</b>	None
<b>CAPTION(S) FOR ILLUSTRS:</b>	n/a
<b>SPONSOR OR FUNDING BODY:</b>	CgMs Ltd on behalf of Walker Group Ltd.
<b>ADDRESS OF MAIN CONTRIBUTOR:</b>	AOC Archaeology Group; Edgefield Road Industrial Estate; Loanhead, Midlothian, EH20 9SY
<b>EMAIL ADDRESS:</b>	Lindsay.dunbar@aocarchaeology.com
<b>ARCHIVE LOCATION</b>	Archive to be deposited in NMRS



AOC Archaeology Group, **Edgefield Industrial Estate, Edgefield Road, Loanhead EH20 9SY**  
tel: **0131 440 3593** | fax: **0131 440 3422** | e-mail: **edinburgh@aocarchaeology.com**

[www.aocarchaeology.com](http://www.aocarchaeology.com)