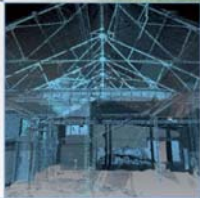


**R3 Grantown Road, Forres:
2013 Phase 1 Excavation
Data Structure Report
Oasis No. AOC 1-146021**

AOC 21581



ARCHAEOLOGY

HERITAGE

CONSERVATION

R3 Grantown Road, Forres: 2013 Phase 1 Excavation Data Structure Report

On Behalf of:	Springfield Properties Pentland House, Grampian Road, Elgin, IV301XJ
National Grid Reference (NGR):	NJ 0308 5720
AOC Project No:	AOC 21581
Prepared by:	Rob Engl
Illustration by:	J Streatfeild-James
Date of Fieldwork:	January-February 2013
Date of Report:	March 2013

This document has been prepared in accordance with AOC standard operating procedures.

Author: Rob Engl

Date: 22nd March 2013

Approved by: Martin Cook

Date: 25th March 2013

Draft/Final Report Stage: Draft

Date: 26th March 2013

Enquiries to: AOC Archaeology Group
Edgefield Industrial Estate
Edgefield Road
Loanhead
EH20 9SY

Tel. 0131 440 3593
Fax. 0131 440 3422
e-mail. edinburgh@aacarchaeology.com



Contents

	Page
List of illustrations	2
List of appendices	2
Abstract.....	3
1 INTRODUCTION.....	4
2 OBJECTIVES.....	5
3 METHOD.....	5
4 RESULTS.....	6
5 DISCUSSION.....	7
6 RECOMMENDATIONS.....	7
7 REFERENCES.....	8
APPENDIX 1: Photographic Register	14
APPENDIX 2: Context Register	18
APPENDIX 3: Small Finds Register	28
APPENDIX 4: Sample Register.....	29
APPENDIX 5: Drawing Register	30
APPENDIX 6: DES Entry	34

List of illustrations

Figure 1: Site location

Figure 2: Areas A, B & F

Figure 3: Plan of Structure 1 recorded in Area A

Figure 3: Plan of Structure 2 recorded in Area B

Figure 3: Plan of Structure 3 recorded in Area F

Figure 3: Plan of Structure 4 & 5 recorded in Area F

List of plates

Plate 1: Feature Group 4 Ring-ditch Structure 1 from south-east

Plate 2: Feature Group 6 Structure 2 south facing section through ring-ditch

Plate 3: Midden spread [608] and pit [610] west facing section

Abstract

This report presents the results of an archaeological excavation undertaken by AOC Archaeology Group on a proposed residential development on the southern outskirts of Forres, Morayshire. The works, undertaken prior to a residential development, followed on from previous phases of archaeological evaluation and excavation undertaken within a 34 ha land parcel situated on rough pasture centred at NGR: NJ 0308 5720.

The evaluation of 2010 identified features across the entire site (Area of roundabout, Areas A, B, C, D, E and F). This comprised linear ditches, pits and post-holes. Artefactual material recovered included Grooved Ware pottery, coarse stone, flint and later prehistoric ceramics.

A subsequent phase of archaeological works was required based on the results of this evaluation. The 2013 Phase 1 excavation comprised the complete excavation of a series of features identified specifically within Areas A, B and F.

The excavation identified the remains of a series of truncated prehistoric structures including three ring-ditch roundhouses, post-ring structures and isolated pits. Artefactual evidence was recovered in the form of prehistoric ceramic, coarse stone and chipped stone assemblages.

Two previous phases of excavation within the general area (Cook 2008, 2010) identified further evidence for prehistoric activity in the area. The results will be subject to post-excavation analyses and published together.

1 INTRODUCTION

1.1 Development Background

1.1.1 A programme of archaeological works was required by Springfield Properties PLC in respect to a proposed housing development at the R3 site, on the southern side of Forres, Moray (centred NGR: NJ 0308 5720, Figure 1). The planned development consists of an extensive greenfield site covering approximately 34 ha. The site lies within the administrative area of Moray Council, which is advised on archaeological matters by Aberdeenshire Council Archaeology Service (ACAS). A programme of archaeological works was required in keeping with the policies outlined in Scottish Planning Policy (Scottish Government 2010) and PAN 2/2011 (Scottish Government 2011)) in order to record the extent and significance of any archaeological remains which may be present within the development area.

1.2 Archaeological Background

1.2.1 Forres is present on maps from as early as the mid 17th century when it appears on Gordon's map of this date and Balnakeith to the north-west of the proposed development site appears on Roy's military survey of 1747 to 1755. Ordnance Survey maps from the mid 19th century through to the early 1990s indicate that the fields proposed for development were not subject to any development during this time.

1.2.2 The Royal Commission on Ancient and Historical Monuments of Scotland records two cropmark sites lying within the development boundaries, NMRS NJ05NW 72 and NJ05NW 116, both named 'Balnaferry' (See Figure 2). The southernmost of these two sites, NMRS NJ05NW 72, is described as cropmark of a ring-ditch though given its size it may represent a small enclosure or palisade. The other site lies a few hundred metres north and is described as a thin oval enclosure of substantial size. Both cropmarks were visible in photographs from 1976 and 1982 though continued ploughing in the intervening years may have further truncated these potential archaeological features.

1.2.3 The Aberdeenshire Council Archaeology Service, ACAS has two other sites registered within their Sites and Monuments Record that fall within the extents of the development area (Figure 2). These sites, NJ05NW0081 and NJ05NW0083, are both listed as 'Knockomie.' Site NJ05NW0081 consists of simple circular enclosure noted from photographs taken in 1994. Site NJ05NW0083 is more complicated with the thin trace of a possible subsquare or rectilinear enclosure, linear marks that may represent earlier field boundaries or trackways and a number of small dark 'blobs' which may represent pits. At the eastern end of the field lie cropmark reflecting a possible souterrain and a suggestion of a circular enclosure. As with the cropmarks described above there has been a number of years of continued ploughing since the photographs were taken, so again some degree of attrition to these sites must be anticipated.

1.2.4 Immediately to the west of the A940 within metres of the western edge of the development area, evaluation and excavation works in 2007 and 2008 on the 'Grantown Road R2 site' unearthed later prehistoric settlement features comprising a souterrain, a ring-ditch, two four poster structures, a circular structure and two furnaces (Figure 2). Artefacts recovered from the excavation include a Neolithic ceramic vessel, two whetstones, fragments of two rotary querns, a saddle quern, two pieces of worked bone and a huge amount of slag type material (Cook, 2008).

1.2.5 In 2010, an archaeological evaluation was undertaken prior to a residential development across the proposed development area, a greenfield site on the southern outskirts of Forres, Moray.

The works consisted of a 10% sample evaluation (34,000 m²) of a c.34 ha land parcel. The proposed development contained a series of cropmark sites identified from aerial photographs (NMRS No. NJ05NW 72 and NJ05NW 116). The trenching distribution was therefore both specific to the known sites and subject to random placement. The evaluation identified features across the entire site. This comprised linear ditches pits and post-holes. Artefactual material recovered included Grooved Ware, coarse stone, flint and later prehistoric ceramics. A secondary phase of archaeological works was required on part of the development site based on the results of the evaluation. The excavation phase ran concurrently with the latter phases of the evaluation. The archaeological excavation comprised the complete excavation of a series of features identified underlying the area of a proposed roundabout and access road situated alongside the Grantown Road (A490).

- 1.2.6 In the immediate vicinity of the development area lie a few later sites: Balnaferry House, NMRS NJ05NW 116 with associated cottages and farm adjacent to the north-west corner of the site. Off the A940 in south-west corner of the site there are the gateposts leading to the Grade B-Listed Knockomie House, NMRS NJ05NW 276.

2 OBJECTIVES

2.1 The objectives of the excavation were:

- i) to uncover fully any archaeological remains which may exist within land take of Areas A, B and F;
- ii) to record through drawn, written, and photographic record the archaeological features present within the identified archaeologically sensitive areas;
- iii) to recover artefacts and samples that will enable the characterisation of the archaeological sediments present;
- iv) to advise and implement an appropriate programme of post-excavation analyses and publication.

3 METHOD

3.1 The excavation was achieved through the excavation of three square/rectangular areas using two tracked 360° excavators equipped with a 2 m wide ditching buckets (Figure 2).

3.2 Excavation was undertaken in shallow units/spits until the first significant archaeological horizon or natural drift geology was reached. All machine excavation was supervised by an experienced field archaeologist. All potentially significant archaeological features were cleaned and defined prior to sample excavation to determine their significance.

4 RESULTS

4.1 Introduction

4.1.1 The excavation was completed between 28th January and 22nd February 2013. The weather conditions during the excavation were poor, with heavy snow, gale force storms and heavy rain; overall archaeological visibility was good. In total three areas were stripped of topsoil (Areas A, B & C; Figure 1) and all the features excavated. Although the features were assigned numbers during the evaluation phase (Cook 2010) they were all re-assigned new numbers during the excavation and it is these numbers that are referred to in the current Data Structure Report. The various data gathered from the excavation are presented as a series of appendices:

Appendix 1: photographic register;

Appendix 2 the excavation contexts register;

Appendix 3 the excavation small finds register;

Appendix 4 the excavation samples register;

Appendix 5 the excavation drawings register;

Appendix 6 reproduces the '*Discovery & Excavation in Scotland*' entry.

4.2 Area A (Figure 2)

4.2.1 The stripping of Area A revealed a total of 30 truncated archaeological features. These were divided into five disparate groupings with several additional isolated features. No strong structural evidence was recognised, with the exception of the curvilinear feature [502] within Group 4, which represents the truncated remains of a ring-ditch roundhouse. It is likely that the majority of the features excavated within the area represent the truncated remains of prehistoric activity, perhaps rubbish pits and possible structures.

4.2.2. *Feature Group 1 [510,512, 514,516 & 524]*

These shallow features were located at the south-eastern corner of the area. Pits [510, 512 & 514] were roughly circular in plan and ranged from 0.50 m to 0.85 m in diameter. Depths ranged from only 0.16 m to 0.22 m. Pit [510] contained numerous fire-cracked stones and fragments of hazel nut shell. To the immediate east of these features lay the larger, more irregular sub-circular pits [516 & 524]. These features measured 2.15 m to 1.1 m in plan and had and had maximum depths of 0.35 m and 0.55 m respectively.

4.2.3 Feature Group 2 [518,527, 529,531 & 535]

A small group of circular and elongated features was located along the eastern boundary of the area. Features [518 & 535] were truncated postholes 0.40 m in diameter, with depths of 0.28 m and 0.10 m. Feature [529] was most probably a further posthole which had been heavily disturbed by ploughing. Two curvilinear features [527 & 531] measuring 1.9 m and 2.5 m in length were also recorded within this grouping. Both had been truncated by burrows and ploughing with depths ranging from 0.14 m to 0.28 m. The features had relatively flat bases and are possibly the remains of a fence-line.

4.2.4 Feature Group 3 [520, 522 & 524]

This small grouping was comprised of three circular pit/post-hole features ranging from 0.55 m to 0.79 m in plan and 0.23 m in depth. All three had been truncated by burrowing and ploughing.

4.2.5 Feature Group 4 [502, 504, 506 & 508] Structure 1 (Figure 3)

This grouping contained the remains of a probable curvilinear ring-ditch feature [502] with two associated post-holes [506 & 508] and a truncated pit [504]. The probable ring-ditch was 2.8 m in length with a width of 1.4m. The feature was relatively shallow (0.28 m) with moderately sloping sides and a flat base. The feature was cut on its south-western edge by an oval, shallow pit [504]. A large piece of slag was identified within this fill.

4.2.6 Feature Group 5 [543, 545, 547, 549, 551 & 553]

This set of features consists of six truncated pits/post-holes ranging from 0.38 m to 0.80 m in diameter and 0.24 m to 0.32 m in depth. The features may represent the truncated remains of a prehistoric structure.

4.2.7 Isolated Features [537, 539, 541 & 556]

Four isolated pits and post-holes were also recorded within the area. With the exception of the large irregular pit [537] the features were circular in plan with diameters ranging from 0.30 m to 0.60 m. Depths ranged from 0.10 m to 0.30 m.



Plate 1 Feature Group 4 Ring-ditch Structure 1 from south-east

4.3. **Area B (Figure 2)**

4.3.1 Fifty-eight archaeological features were investigated within Area B. These included the remains of a ring-ditch with an associated partial internal post-ring (Feature Group 6 Structure 2). With the exception of Feature Group 7 the remainder of the features can be classified as isolated pits and post-holes. As with Area A the features appeared to be heavily truncated by modern ploughing.

4.3.2 Feature Group 6 [686, 688, 690, 692, 694, 696, 698, 704, 706, 708, 710, 712, 714, 716, 718, 722, 724, 726, 728, 730, 732, 736, 739, 741, 743, 749, 751, 753, 755 & 780] Structure 2 (Figure 3)

The majority of these features occur as pits and post-holes and are located to the immediate north of the ring-ditch feature [728]. Several of the larger pits in this group [686, 688, 690, 730 & 732] provided small finds in the form of prehistoric ceramics (McLaren pers comm.). The ring-ditch feature [728] itself was curvilinear in shape with a length of 6.00 m and a maximum width of 1.30 m. The feature had shallow terminals measuring 0.20 m in depth and a deeper central portion measuring 0.50 m. The ring-ditch was filled with medium brown sandy silt which contained a deposit of large sub-rounded stones within the centre of the ditch. A Hammerstone (SF 8) and saddle-quern (SF 7) were recovered from the fill.

4.3.3 A partial arc of four truncated post-holes [696, 708, 710 & 712] was located within the inner curve of the ring-ditch. These ranged from 0.32 m to 0.40 m in diameter and from 0.14 m to 0.22 m in depth. It is probable that these features form the remains of an inner post-ring associated with a large roundhouse structure. The ring-ditch feature [728] would be external to this inner ring within the structure and probably formed through the process of erosion. Two post-holes [716 & 718] and a large circular pit [714] were situated to the immediate south of the post-ring and can be explained as associated structural features within the roundhouse.



Plate 2 Feature Group 6 Structure 2 south facing section through ring-ditch

4.3.4 Feature Group 7 [765, 793, 767, 791, 769 & 795]

A linear group of five post-holes were arranged in an east-west alignment. These features possibly represent the remains of a fence-line. A further post-hole [795] was located immediately to the south and is possibly associated.

4.3.5 Feature Group 8 [781, 783, 789 & 797]

A small group of four pits and post-holes were recorded within the south-eastern corner of Area B. The pit [789] contained several body sherds of decorated prehistoric ceramics (SF 14 & 15). This ceramics has been provisionally identified as Neolithic Carinated bowl (McLaren pers comm.)

4.3.6 Isolated Features [700, 702, 720, 734, 743, 745, 747, 757, 759, 761, 763, 773, 775, 777, 779, 785, 787, 799, 801 & 803]

Twenty isolated pits and post-holes were spread across the remainder of Area B. The majority of these features were relatively large pit features over a metre in diameter. Most appeared heavily truncated with depths ranging from 0.13 m to 0.36 m. Several examples such as pit [777] contained dark brown organic silts containing fire-cracked stone and charcoal fragments. No further artefacts were recovered from these features.

4.4 **Area F (Figure 2)**

4.4.1 A series of 64 features were identified within Area F. These were largely concentrated within three feature groupings (9, 10 & 11). Within these broad groupings the truncated remains of a further ring-ditch and three post-ring structures (3, 4 & 5) were tentatively recognised.

4.4.2 Feature Group 9 [558, 560, 562, 564, 566, 568, 570, 572, 574, 576, 578, 580, 582, 594, 596, 598, 600, 602, 604, 606, 610, 612, 614, 618, 620, 622, 624 & 652] (Structure 3) (Figure 3)

This large group of features contained numerous substantial pits surrounding a partial post-ring structure with associated ring-ditch (Structure 3). The post-ring was 2.5 m in diameter and consisted of eight truncated post-holes [570, 572, 574, 576, 578, 582, 598 & 604]. The post-holes ranged from 0.20 m to 0.28 m in diameter and from 0.11 m to 0.19 m in depth. The post-holes were spaced at one metre intervals. Post-hole [604] was cut by the shallow ring-ditch [602]. This feature was 2.07 m in length, 1.10 m in width and 0.12 m in depth.

4.4.3 Feature Group 10 [584, 586, 588, 590, 608, 610, 626, 632, 634, 642 & 644] (Structure 4) (Figure 3)

Structure 4 consisted of a partial arc of post-holes [584, 586, 588 & 590] which appeared to be associated with the probable midden spread [608]. The post-holes were 0.30 m to 0.50 m in diameter and 0.10 m to 0.18 m in depth. The midden spread was three metres in length and one metre in width. It had weak, gently sloping sides and an irregular base. The spread was dark brown organic silt with numerous charcoal fragments. The spread was 0.28 m in depth

and was itself cut by the truncated pit [610]. Various prehistoric ceramics including a decorated rim (SF 1) were recovered from the spread, with at least two fragments of Neolithic Impressed Ware (McLaren pers comm.). Several large stone filled pits [626, 642, 634 & 644] were located to the immediate west of the spread.



Plate 3 Midden spread [608] and pit [610] west facing section

4.4.4 Feature Group 11 [654, 656, 658, 662, 664, 666, 668, 674, 674, 676, 678, 680 & 682] (Structure 5) (Figure 3)

This group of features consisted of a tight spread of truncated post-holes with several larger pit features. Four of the features [654, 658, 684 & 674] formed a partial arc. It is possible that these form part of an internal post-ring for a roundhouse structure. The post-holes [656, 668, 666, 678, 680, 682 & 662] were located within the arc and may represent the remains of internal divisions or other structural elements. The pit [676] contained a saddle-quern (SF 5), a side/endscraper (SF 6) and numerous sherds of prehistoric pottery (SF 4). This varied assemblage of artefacts may illustrate some form of structured deposition as the quern and scraper appeared relatively fresh.

4.4.5 Isolated Features [636, 630, 628 & 660]

Four isolated pit features were recorded within Area F. No dating evidence and no function was identified.

5 DISCUSSION

- 5.1 Despite the considerable truncation visible in all three excavated areas, the recorded features survived enough to provide several identifiable ground plans. The features identified include three probable ring-ditch roundhouses (Structures 1, 2 and 3) and two post-ring structures (Structures 4 and 5). In addition, a series of isolated pits comprising a combination of rubbish disposal pits, storage pits and possible cooking pits were identified.
- 5.2 Artefactually, the excavation was relatively rich, especially in comparison to the structures excavated during the 2008 and 2010 phases of work. The nature of the artefacts probably suggests a wider chronological range to the prehistoric occupation of the site comprising material diagnostic to the Early Neolithic through to the Iron Age. In addition to finds of coarse and chipped stone, at least three forms of prehistoric ceramic were recovered including decorated rim and body sherds from Impressed Ware and Carinated Bowls. Three of the five structures contained diagnostic material, with Structure 2 containing material suggestive of the Iron Age, while Structures 4 and 5 contained material dating to the Neolithic. The discovery of the latter two structures is hugely significant, providing rare evidence for possible Neolithic domestic settlement.
- 5.3 Generally the excavation of 2013 has revealed evidence for the wider spatial and chronological occupation of the site. The stratigraphic evidence remained poor with little physical evidence of phasing within the excavated features. However, the evidence does confirm that substantial if truncated occupation does occur across the site. While the final chronology and subsequent use of the site must await a programme of absolute dating, the feature types and artefacts recovered during the 2013 excavation offers some indication that prehistoric activity on site can be pushed back to the Early Neolithic.

6 RECOMMENDATIONS

- 6.1. This DSR report is both preliminary and provisional, with many issues raised by the excavation data still to be addressed. In ascertaining a fuller knowledge of the excavation results, a post-excavation research design will be prepared for approval by the planning authority's archaeological advisor. This will describe all necessary and appropriate assessment processes and consequent post-excavation analyses together with publication proposals for the final report.
- 6.2 This report will integrate the stratigraphic, contextual and descriptive data from the excavation with specialist post-excavation analyses covering dating, palaeoenvironmental and economic issues. These will then be included with the findings from the previous phases of work culminating in an article fit for academic publication.

7 REFERENCES

AOC Archaeology Group 2010, *Grantown Road, R3, Moray, Written Scheme of Investigation*. Unpublished client report

AOC Archaeology Group 2010, *Grantown Road, R3, Moray, Written Scheme of Investigation Addendum*. Unpublished client report

Cook, M 2008 *Grantown Road R2 Forres, Moray Excavation* Unpublished client report

Cook, M 2010 *Grantown Road R3 Forres, Moray Evaluation and Excavation* Unpublished client report

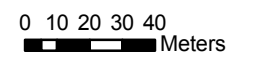
Scottish Government 2010 *Scottish Planning Policy*. (February 2010)

Scottish Government 2011 *Planning Advice Note 2/2011: Planning and Archaeology*



Figure 1:
Proposed excavation areas

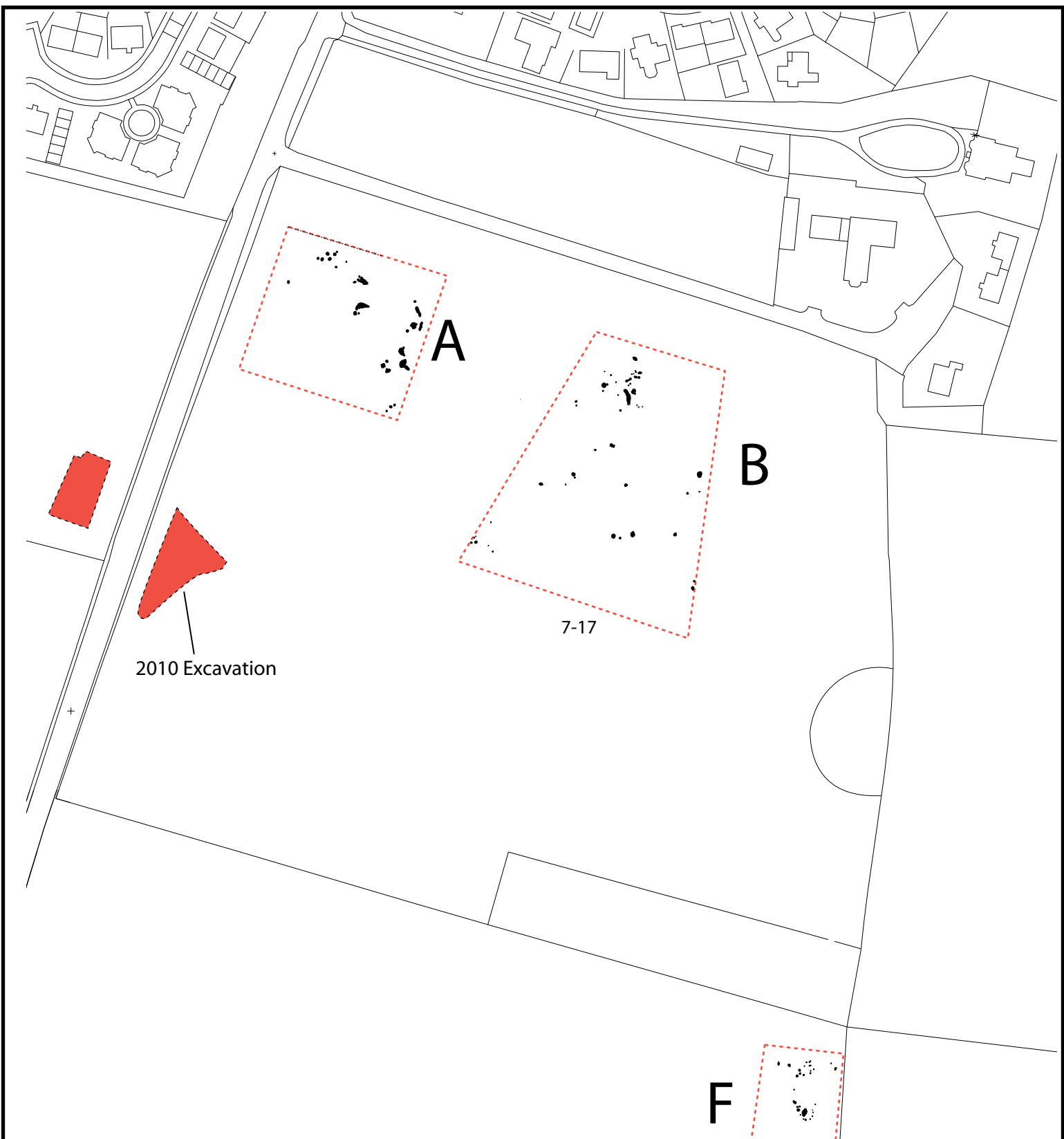
Legend
 Areas of archaeological significance



Project No.:	21581
Date:	18.8.2010
Scale at A3:	1:2,325

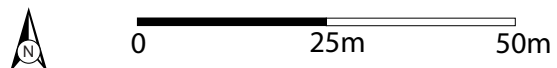


(c) AOC Archaeology 2010



AOC 21581
 Granton Road Forres R3

Figure 2: Location of Features



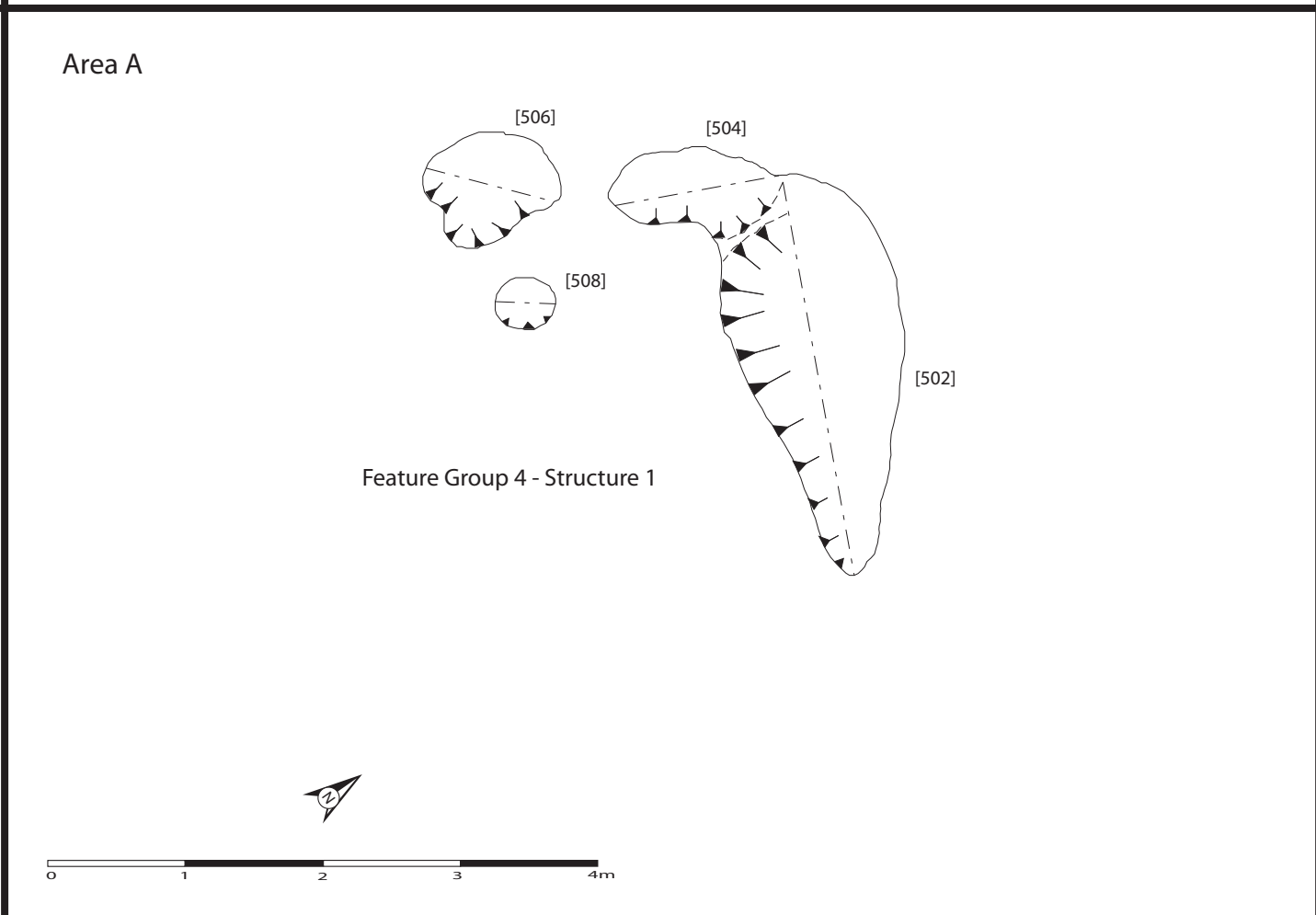
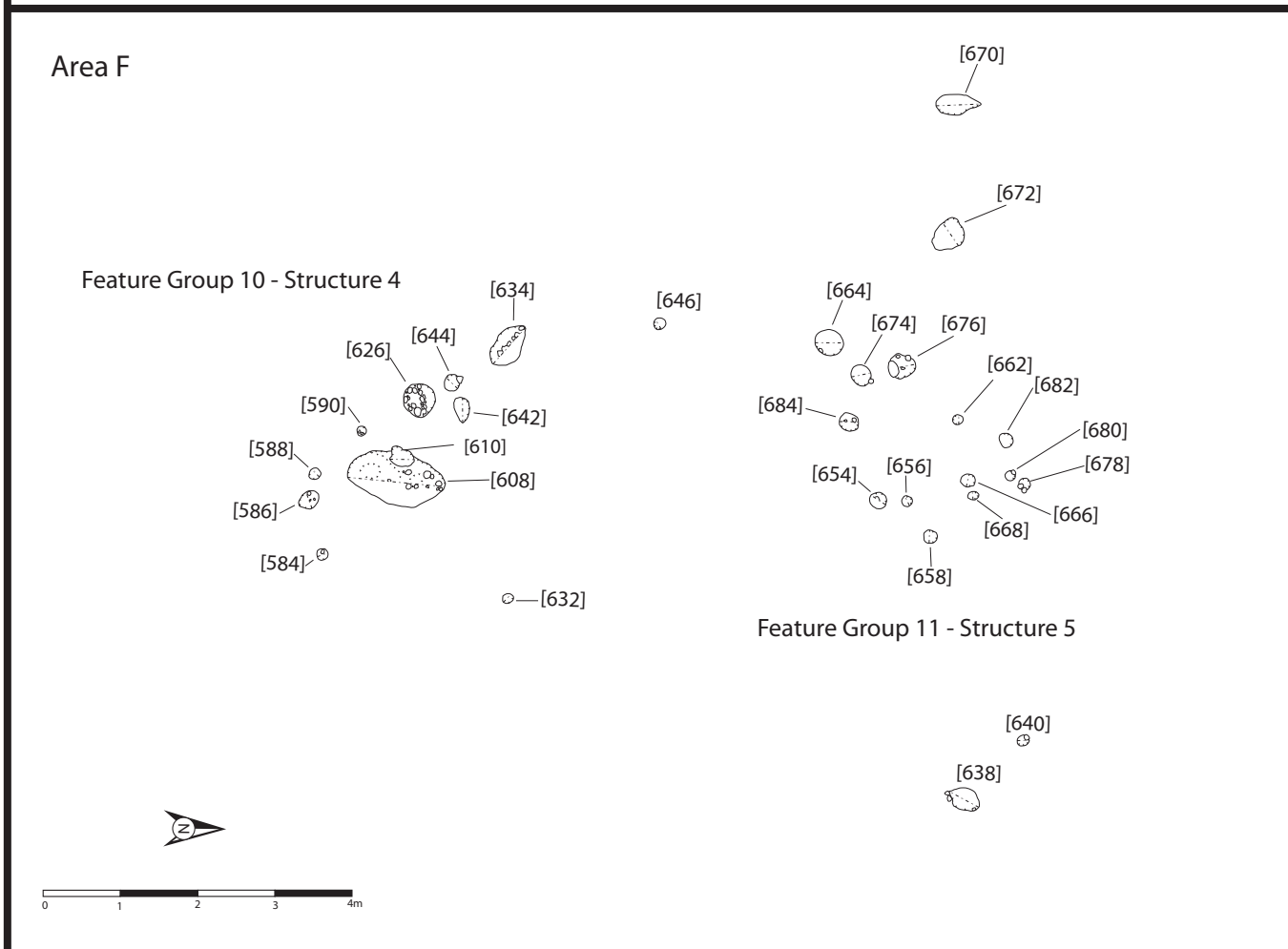
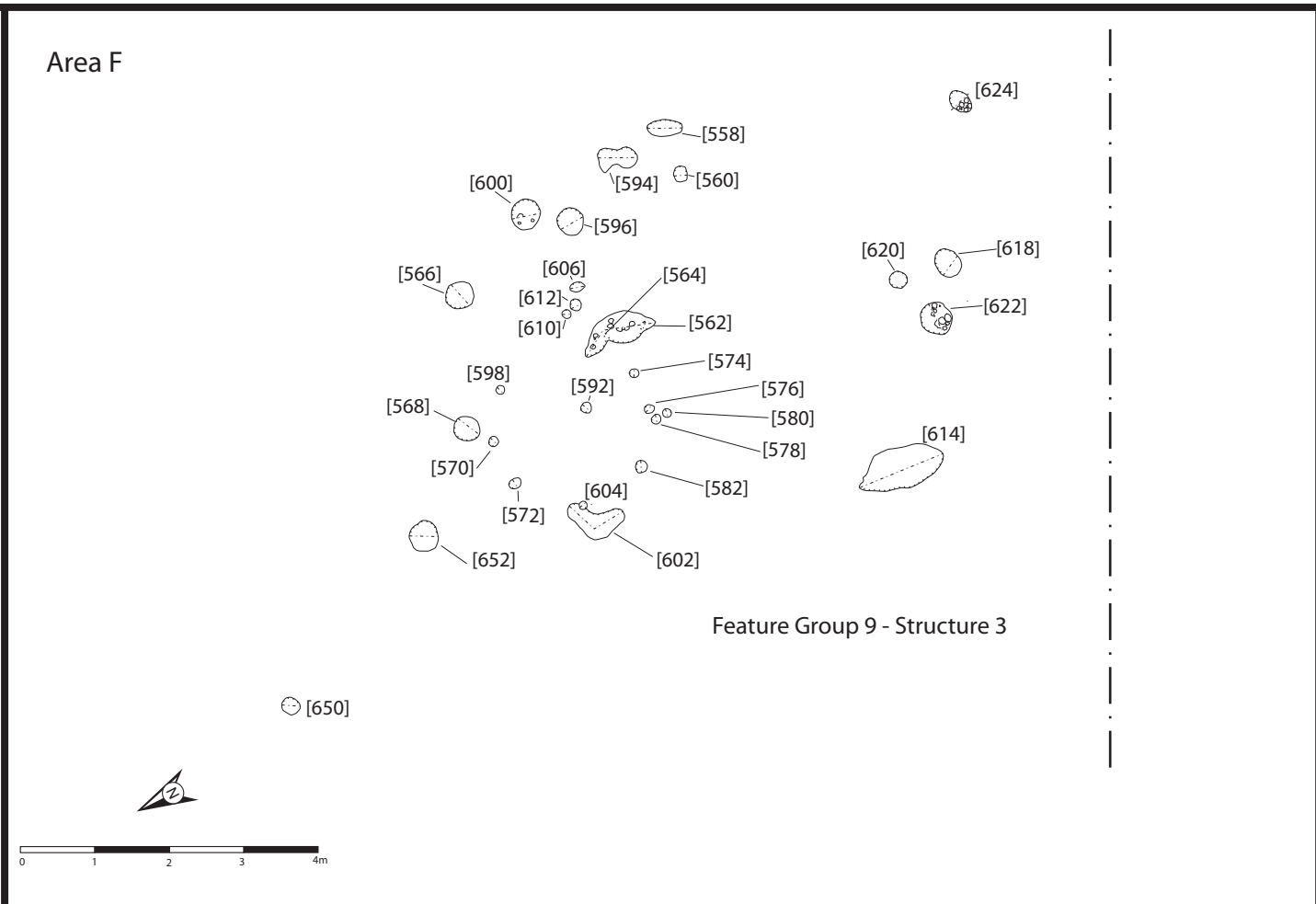
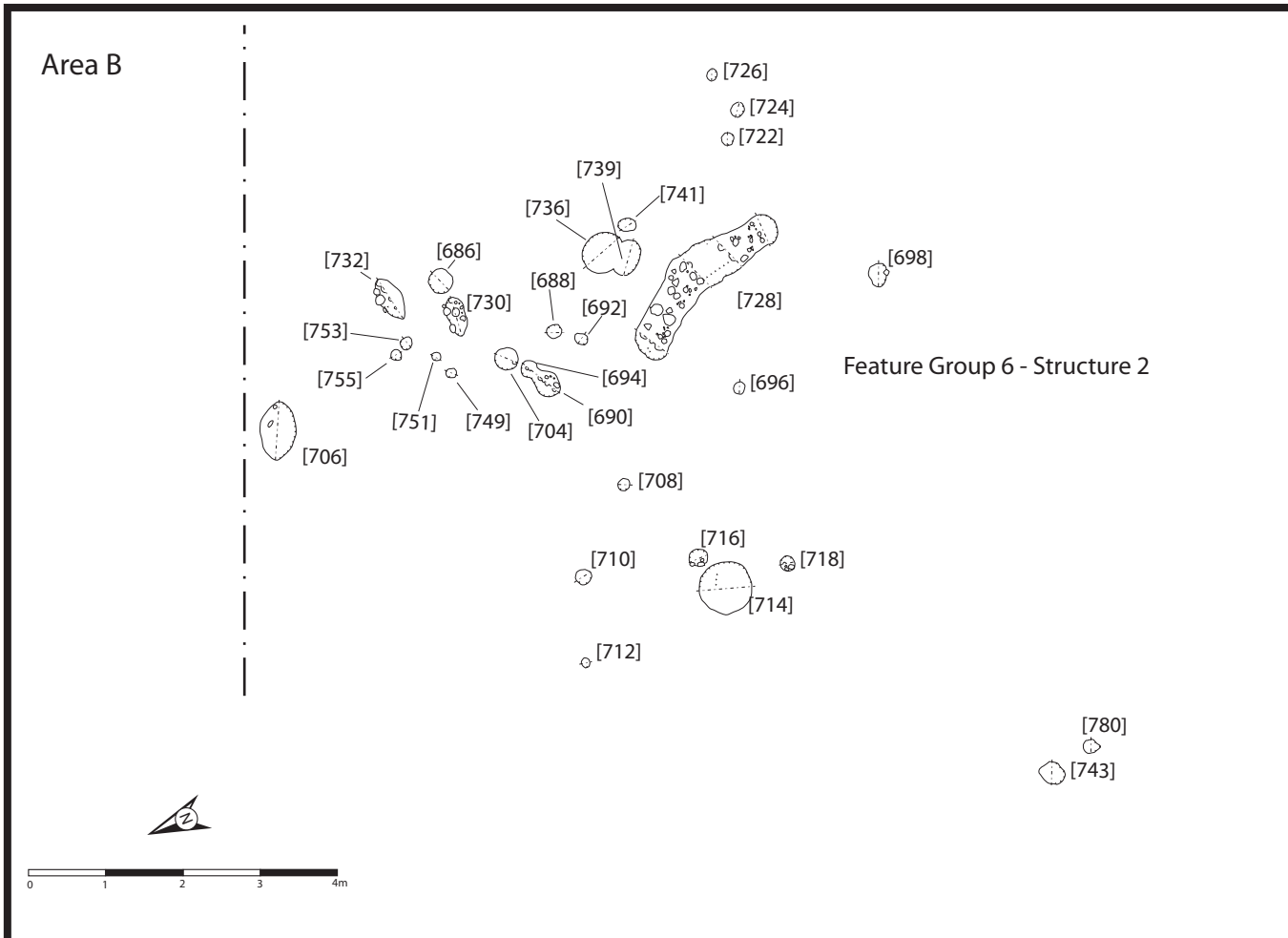


Figure 3 - Plans of Structures at Granton Road R3

R3 Grantown Road, Forres: Excavation Data Structure Report

Section 2: Appendices

APPENDIX 1: Photographic Register

Digital Film 1 Area A

Frame	Trench	Description	From
30		Registration shot	
31	502-9	Section of pit	SE
32	502-3	Close up of section [502-3]	S
33	504-9	Close up of section [502-9]	E
34-35	520	South-west facing section	SW
36	522	South facing section	S
37	524	South-east facing section	SE
38	510	North-west facing section of pit	NW
39	510	Plan of pit	NW
40	512	North-west facing section of pit	NW
41	512	Plan of pit	NW
42	514	North facing section of pit	N
43	514	Plan of pit	N
44	510-512-514	Plan of pits	W
45	516	North-east facing section of pit	NE
46	516	Plan of pit	NE
47	516	South-west facing section of pit	SW
48	516	Plan of pit	SW
49	516	North-west facing section of pit	NW
50	518	West facing section of pit	W
51	518	Plan of pit	W
52	526	North-east/south-east facing section of pit	E
53	526	North-west/south-west facing section of pit	W
54	529	South facing section of pit	S
55	529	Plan of pit	S
56	527	East facing section of pit	E
57	527	Plan of pit	E
58	529	Slot A south facing section	N
59	529	Slot B north facing section	N
60	535	North-east facing section of post-hole	NE
61	537	North-east facing section of pit	NE

62	541	Plan of feature	NE
63	543	Plan of feature	S
64	545	Plan of feature	S
65	547	Plan of feature	S
66	549	Plan of feature	S
67	539	South facing section of pit	S
68	556	North facing section of pit	N
69	551	South-west facing section of pit	SW
70	553	South-west facing section of pit	SW

Digital Film 2 Area F

Frame	Trench	Description	From
71	562	Working shot	SW
72	558	East facing section of pit	E
73	560	East facing section of pit	E
74	566	North-west facing section of pit	NW
75	562	South-west facing section of pit	SW
76	568	North-west facing section of pit	NW
77	572	North-west facing section of pit	NW
78	570	North-west facing section of pit	NW
79	574	North facing section of pit	N
80	576	North facing section of pit	N
81	578	North facing section of pit	N
82	580	South facing section of pit	S
83	582	North facing section of pit	N
84	584	East facing section of pit	E
85	586	South facing section of pit	S
86	588	South facing section of pit	S
87	590	North facing section of pit	N
88	592	North-west facing section of pit	NW
89	594	East facing section of pit	E
90	596	East facing section of pit	E
91	598	North-west facing section of pit	NW
92	600	East facing section of pit	E
93	602	South-east facing section	SE
94	604	South-west facing section	SW
95	606	East facing section of pit	E
96	608	West facing section through midden	W
97	608	West facing section through midden	W
98	608	Plan of pit	N
99	610	West facing section of pit	W

100	610	Plan of pit	W
101	614	South-west facing section	SW
102	612	East facing section of post-hole	E
103	616	East facing section of post-hole	E
104	618	North-east facing section	NE
105	620	North-east facing section	NE
106	622	East facing section	NW
107	624	Plan of pit	E
108	626	North facing section of pit	N
109	626	East facing section	N
110	628	North-east facing section	E
111	632	East facing section	NE
112	630	East facing section	E
113	634	Working shot	NE
114	634	South-west facing section	SW
115	638	South-east facing section	SE
116	640	North-east facing section	NE
117	637	East facing section	E
118	642	North-west facing section	NW
119	644	West facing section	W
120	646	South facing section	S
121	652	East facing section	E
122	658	North facing section	N
123	656	North-west facing section	NW
124	654	West facing section	W
125	648	East facing section	E
126	650	East facing section	E
127	660	East facing section	E
128	662	South-east facing section	SE
129	664	South facing section	S
130	666	South facing section	S
131	668	South facing section	S
132	670	North-west facing section	NW
133	672	North-east facing section	NE
134	674	East facing section	E
135	676	East facing section	E
136	678/680	North-west facing section	NW
137	682	North-west facing section	NW
138	684	West facing section	W

Digital Film 3 Area B

Frame	Trench	Description	From
139	686	South-west facing section	SW
140	688	West facing section	W
141	688	Plan of pit	W
142	690	West facing section	W
143	690	Plan of pit	W
144	692	South facing section	S
145	694	East facing section	E
146	696	South facing section	S
147	698	South facing section	S
148	700	West facing section	W
149	702	East facing section	E
150	706	South facing section	S
151	708	West facing section	W
152	710	West facing section	W
153	712	West facing section	W
154	714	East facing section	E
155	714	East facing section	E
156	716	East facing section	E
157	718	East facing section	E
158	720	South facing section	S
159	722	South facing section	S
160	724	South facing section	S
161	726	South facing section	S
162	728	Section 1	S
163	728	Section 1	NW
164	728	Section 1	SE
165	728	Section 1	W
166	735	East facing section	E
167	736	South-east facing section	SE
168	739	North-east facing section	NE
169	741	South facing section	S
170	730	South facing section	S
171	732	South facing section	S
172	743	South facing section	S
173	745	East facing section	E
174	747	West facing section	W
175	759	West facing section	W
176	749/751	North facing section	N
177	753/755	North facing section	N
178	757	North facing section	N
179	759	North facing section	N

180	761	North facing section	N
181	765	North facing section	W
182	767	North facing section	NW
183	769	North facing section	W
184	771	North facing section	E
185	773/775	North facing section	SE
186	777	North facing section	SE
187	779	North facing section	N
188	781	North facing section	N
189	783	North facing section	N
190	785	North facing section	N
191	787	North facing section	N
192	789	North facing section	N
193	797	North facing section	N
194	799	North facing section	N
195	801	North facing section	N
196	903	North facing section	N

APPENDIX 2: Excavation Context Register

Area A

Context	Type	Description
500	All	Topsoil
501	All	Subsoil
502	Cut	Linear cut feature with moderately sloping sides and flat base. Dimensions; 1.40 m (N-S) by 2.80 m (E-W). Depth 0.28 m. Filled by (503). Pit. Cut by pit [504] in SW corner.
503	Fill	Dark brown sandy silt with gravel inclusions >10%. Contains slag. Fill of [502]
504	Cut	Oval cut feature with steeply sloping sides and rounded base. Dimensions; 1.20 m (N-S) by 0.80 m (E-W). Depth 0.18 m. Filled by (505). Pit. Cuts pit [502] in SW corner.
505	Fill	Dark brown sandy silt with gravel inclusions >10%. Fill of [504].
506	Cut	Oval cut feature with moderately sloping sides and gently rounded base. Dimensions; 1.10 m (N-S) by 0.50 m (E-W). Depth 0.24 m. Filled by (507). Pit.
507	Fill	Medium brown sandy silt with gravel inclusions >20%. Fill of [506]
508	Cut	Small circular cut feature with moderately sloping sides and rounded base. Dimensions; 0.35 m in diameter. Depth 0.20 m. Filled by (509). Post-hole.
509	Fill	Dark brown organic sandy silt with gravel inclusions >10%. Fill of [508].
510	Cut	Circular cut feature with moderately sloping sides and rounded irregular base. Dimensions; 0.80 m in diameter. Depth 0.22 m. Filled by (511). Pit.
511	Fill	Dark brown organic sandy silt with gravel inclusions >10%. Fill of [510]. Contains numerous fire-cracked stones. Some hazel nut shell fragments present.
512	Cut	Circular yet irregular cut feature with moderately sloping sides and rounded base. Dimensions; 0.85 m in diameter. Depth 0.20 m. Filled by (513). Truncated pit.
513	Fill	Grey brown sandy silt with gravel inclusions >10%. Fill of [512].
514	Cut	Small circular cut feature with moderately sloping sides and rounded irregular base. Dimensions; 0.50 m in diameter. Depth 0.16 m. Filled by (515). Truncated pit.
515	Fill	Dark brown sandy silt with <10 % gravel inclusions. Fill of [514].
516	Cut	Sub-circular cut feature. Shallow with moderately sides and rounded base. Dimensions; 1.55 m (N/S) by 1.1 m (E/W). Depth 0.30 m. Filled by (517). Pit disturbed by animal burrows and ploughing.

517	Fill	Mixed disturbed fill of medium grey sandy silt with gravel inclusions <20%. Fill of [516].
518	Cut	Circular cut feature with steeply sloping sides and rounded base. Dimensions; 0.40 m in diameter. Depth 0.28 m. Filled by (517). Post-hole
519	Fill	Dark grey sandy silt with gravel inclusions <15%. Fill of [518].
520	Cut	Sub-circular cut feature with moderately sloping sides and rounded base. Dimensions; 0.55 m (N-S) by 0.45 m (E-W). Depth 0.23 m. Filled by (521). Pit.
521	Fill	Dark grey brown sandy silt with gravel inclusions <20%. Fill of [520]. Occasional charcoal fragments.
522	Cut	Sub-circular cut feature. Shallow with steep sides and flat base. Dimensions; 0.79 m (N/S) by 0.74 m (E/W). Depth 0.23 m. Filled by (523).
523	Fill	Dark grey brown coarse sandy silt. Fill of [522]
524	Cut	Oval cut feature. Shallow with steep sides and rounded base. Feature has a broad step along the NE edge. Dimensions; 2.15 m (NE/SW) by 1.37 m (SE/NW). Depth 0.55 m. Large post-hole with insertion step. Filled by (533) & (534).
525	Void	Void
526	Void	Void
527	Cut	Large elongated cut feature. Narrow with steep irregular sides and base. Dimensions; 1.90 m (N/S) by 1.37 m (E/W). Depth 0.28 m. Disturbed pit affected by ploughing and stone drags. Filled by (528).
528	Fill	Mixed medium brown sandy clay with gravel and stone inclusions >10%. Fill of [528]
529	Cut	Circular cut feature irregular in plan with steeply sloping sides and rounded base. Dimensions; 0.50 m in diameter. Depth 0.35 m. Filled by (517). Pit affected by ploughing.
530	Fill	Mixed medium brown sandy clay with gravel and stone inclusions >10%. Fill of [529]
531	Cut	Curvilinear cut feature with moderately sloping sides and flat base. Two 0.50 m wide slots (A&B) excavated through the feature. Dimensions; 2.50 m (N/S) by 0.60 m (Slot A), 0.90 m (Slot B) m Depth 0.14 m (Slot A), 0.24 m (Slot B). Slot A truncated by animal burrow. Pit. Filled by (532)
532	Fill	Medium grey brown sandy silt very stony with >20% gravel inclusions. Animal burrow has disturbed fill in Slot A. Fill of [531]
533	Fill	Pale brown sandy silt with <10% gravel inclusions. Fill of [524]. Overlies (534)
534	Fill	Dark brown sandy silt with <10% gravel inclusions. Lower fill of [524]. Underlies (533)
535	Cut	Circular cut feature with gently sloping sides and rounded base. Dimensions; 0.40 m in diameter. Depth 0.10 m. Filled by (536). Truncated post-hole.
536	Fill	Medium red brown sandy silt with <20% gravel inclusions. Fill of [535].
537	Cut	Oval cut feature. Shallow with gently sloping sides and rounded base. Dimensions; 1.45 m (N/S) by 1.08 m (E/W). Depth 0.31 m. Pit. Filled by (538)
538	Fill	Medium grey brown sandy silt with <10% gravel inclusions. Fill of [537].
539	Cut	Circular cut feature with gently sloping sides and rounded base. Dimensions; 0.60 m in diameter. Depth 0.10 m. Filled by (536). Truncated pit/post-hole.
540	Fill	Dark brown sandy silt with >20% gravel inclusions. Fill of [539]
541	Cut	Circular cut feature with gently sloping sides and rounded base. Dimensions; 0.60 m in diameter. Depth 0.19 m. Filled by (542). Truncated pit/post-hole.
542	Fill	Dark brown sandy silt with >10% gravel inclusions. Contains small charcoal fragments. Fill of [539]
543	Cut	Circular cut feature with moderately sloping concave sides and rounded base. Dimensions; 0.80 m in diameter. Depth 0.31 m. Filled by (544). Truncated pit/post-hole.
544	Fill	Medium grey brown sandy silt with <10% gravel inclusions. Fill of [543].
545	Cut	Circular cut feature with steep sloping concave sides and rounded base. Dimensions; 0.80 m in diameter. Depth 0.32 m. Filled by (546). Truncated pit/post-hole.
546	Fill	Dark brown sandy silt with >10% gravel inclusions. Fill of [545]
547	Cut	Circular cut feature with steep sloping concave sides and rounded base. Dimensions; 0.70 m in diameter. Depth 0.26 m. Filled by (548). Truncated pit/post-hole.
548	Fill	Dark brown sandy silt with >10% gravel inclusions. Fill of [547]
549	Cut	Circular cut feature with steep sloping concave sides and rounded base. Dimensions; 0.38 m in diameter. Depth 0.28 m. Filled by (550). Truncated pit/post-hole.
550	Fill	Dark brown sandy silt with >10% gravel inclusions. Fill of [549]
551	Cut	Sub-circular cut feature. Shallow with steep sides and flat base. Dimensions; 0.72 m (N/S) by 0.87 m (E/W). Depth 0.24 m. Pit. Filled by (552).
552	Fill	Dark brown sandy silt with >10% gravel inclusions. Contains small charcoal fragments. Fill of [551]
553	Cut	Sub-circular cut feature. Shallow with steep sides and flat base. Dimensions; 0.68 m (N/S) by 0.78 m (E/W). Depth 0.30 m. Pit. Filled by (554) & (555).

554	Fill	Dark brown sandy silt with >10% gravel inclusions. Depth 0.30 m. Lower fill of [553]
555	Fill	Dark brown sandy silt with >10% gravel inclusions. Depth 0.30 m. Contains small charcoal fragments. Upper fill of [553]
556	Cut	Circular cut feature with steep sloping concave sides and rounded base. Dimensions; 0.30 m in diameter. Depth 0.30 m. Filled by (557). Truncated post-hole.
557	Fill	Medium red brown sandy silt with >20% gravel inclusions. Fill of [556]

Area F

Context	Type	Description
558	Cut	Small elongated oval cut with shallow gently sloping sides and irregular flat base. Dimensions; 1.20 m (N/S) by 0.60 m (E/W). Depth 0.10 m. Truncated pit. Filled by (559).
559	Fill	Compact red brown sandy silt.
560	Cut	Circular cut feature with steep sloping concave sides and rounded base. Dimensions; 0.50 m in diameter. Depth 0.40 m. Filled by (561). Post-hole.
561	Fill	Medium red brown sandy silt with >10% gravel inclusions. Contains several large sub-rounded packing stones. Fill of [560]
562	Cut	Large oval cut feature. Shallow with moderately sloping sides and flat base. Dimensions; 2.20 m (N/S) by 1.13 m (E/W). Depth 0.27 m. Pit. Cut by [564]. Filled by (563).
563	Fill	Medium red brown sandy silt with >10% gravel inclusions. Contains several large sub-rounded stones within middle. Fill of [562]
564	Cut	Small oval cut feature. Shallow with moderately sloping sides and round base. Dimensions; 0.82 m (N/S) by 0.57 m (E/W). Depth 0.18 m. Pit. Cuts [563]. Filled by (565).
565	Fill	Medium brown sandy silt with >10% gravel inclusions. Fill of [564]
566	Cut	Circular cut feature with moderately sloping concave sides and rounded base. Dimensions; 1.02 m in diameter. Depth 0.35 m. Filled by (567). Pit.
567	Fill	Medium brown sandy silt with >10% gravel inclusions. Fill of [566]
568	Cut	Circular shallow cut feature with moderately sloping concave sides and rounded base. Dimensions; 0.95 m in diameter. Depth 0.09 m. Filled by (569). Pit.
569	Fill	Medium brown sandy silt with <10% gravel inclusions. Fill of [568]
570	Cut	Circular shallow cut feature with steep sloping concave sides and flat base. Dimensions; 0.23 m in diameter. Depth 0.11 m. Filled by (569). Truncated post-hole.
571	Fill	Dark grey brown sandy silt with <10% gravel inclusions. Fill of [570]
572	Cut	Circular shallow cut feature with steep sloping concave sides and flat base. Dimensions; 0.28 m in diameter. Depth 0.15 m. Filled by (573). Truncated post-hole.
573	Fill	Dark grey brown sandy silt with <10% gravel inclusions. Fill of [572]
574	Cut	Circular shallow cut feature with steep sloping concave sides and round base. Dimensions; 0.20 m in diameter. Depth 0.15 m. Filled by (575). Truncated post-hole.
575	Fill	Dark grey brown sandy silt with <10% gravel inclusions. Fill of [574]
576	Cut	Circular shallow cut feature with steep sloping concave sides and round base. Dimensions; 0.26 m in diameter. Depth 0.19 m. Filled by (577). Truncated post-hole.
577	Fill	Grey brown sandy silt with <10% gravel inclusions. Fill of [576]
578	Cut	Circular very shallow cut feature with slightly sloping concave sides and round base. Dimensions; 0.20 m in diameter. Depth 0.04 m. Filled by (579). Truncated post-hole.
579	Fill	Grey brown sandy silt with <10% gravel inclusions. Fill of [578]
580	Cut	Circular very shallow cut feature with slightly sloping concave sides and round base. Dimensions; 0.24 m in diameter. Depth 0.08 m. Filled by (581). Truncated post-hole.
581	Fill	Medium brown sandy silt with <10% gravel inclusions. Fill of [580]

582	Cut	Circular shallow cut feature with slightly sloping concave sides and round base. Dimensions; 0.30 m in diameter. Depth 0.14 m. Filled by (583). Truncated post-hole.
583	Fill	Medium brown sandy silt with <10% gravel inclusions. Fill of [582]
584	Cut	Circular shallow cut feature with slightly sloping concave sides and round base. Dimensions; 0.30 m in diameter. Depth 0.10 m. Filled by (585). Truncated pit/post-hole. Possibly associated with features [586], [588] & [590]
585	Fill	Medium brown sandy silt with <10% gravel inclusions. Fill of [582]
586	Cut	Circular shallow cut feature with slightly sloping concave sides and round base. Dimensions; 0.50 m in diameter. Depth 0.18 m. Filled by (585). Truncated pit/post-hole. Possibly associated with features [584], [588] & [590]
587	Fill	Medium brown sandy silt with <10% gravel inclusions. Fill of [582]
588	Cut	Circular shallow cut feature with slightly sloping concave sides and round base. Dimensions; 0.30 m in diameter. Depth 0.10 m. Filled by (589). Truncated pit/post-hole. Possibly associated with features [584], [586] & [590]
589	Fill	Medium grey brown sandy silt with <10% gravel inclusions. Fill of [588]
590	Cut	Circular shallow cut feature with slightly sloping concave sides and round base. Dimensions; 0.30 m in diameter. Depth 0.10 m. Filled by (591). Truncated pit/post-hole. Possibly associated with features [584], [586] & [588]
591	Fill	Medium grey brown sandy silt with inclusions of sandy clay. <10% gravel inclusions. Fill of [590]
592	Cut	Circular shallow cut feature with slightly sloping concave sides and round base. Dimensions; 0.26 m in diameter. Depth 0.12 m. Filled by (593). Truncated post-hole.
593	Fill	Medium grey brown sandy silt with inclusions of sandy clay. <10% gravel inclusions. Fill of [592]
594	Cut	Circular cut feature with steeply sloping concave sides and round base. Dimensions; 0.60 m in diameter. Depth 0.40 m. Filled by (595). Truncated post-hole.
595	Fill	Dark grey brown sandy silt with <10% gravel inclusions. Contains occasional charcoal fragments and two large packing stones. Fill of [594]
596	Cut	Oval cut feature with moderately sloping concave sides and round base. Dimensions; 0.90 m (N/S) by 1.00 m (E/W). Depth 0.24 m. Pit. Filled by (597).
597	Fill	Dark grey brown sandy silt with <5% gravel inclusions and occasional fire-cracked stone. Fill of [596]
598	Cut	Circular cut feature with steeply sloping concave sides and flat base. Dimensions; 0.33 m in diameter. Depth 0.11 m. Filled by (599). Truncated post-hole.
599	Fill	Dark grey brown sandy silt. Fill of [598]
600	Cut	Circular cut feature with moderately sloping concave sides and round base. Dimensions; 1.00 m in diameter. Depth 0.25 m. Filled by (601). Truncated pit.
601	Fill	Dark grey brown sandy silt with <5% gravel inclusions and occasional charcoal fragments. Fill of [600]
602	Cut	Irregular curvilinear pit with gently sloping concave sides and flat base. Dimensions; 2.07 m (N/S) by 1.10 m (E/W). Depth 0.12 m. Probable ring-ditch. Cuts post-hole [604]. Possibly associated with post-holes [604], [598], [572], [570], [582] & [580]. Cut Filled by (603).
603	Fill	Dark grey brown sandy silt with <5% gravel inclusions. Fill of [602]
604	Cut	Circular cut feature with steeply sloping concave sides and flat base. Dimensions; 0.24 m in diameter. Depth 0.12 m. Filled by (605). Truncated post-hole. Cut by [603]. Possibly associated with post-holes [604], [598], [572], [570], [582] & [580].
605	Fill	Dark grey brown sandy silt with <5% gravel inclusions. Fill of [604]
606	Cut	Oval cut feature with steeply sloping concave sides and round base. Dimensions; 0.40 m (N/S) by 0.30 m (E/W). Depth 0.17 m. Pit. Filled by (607).

607	Fill	Medium red brown sandy silt. Fill of [606]
608	Cut	Irregular curvilinear cut with weakly sloping irregular concave sides and flat irregular base. Dimensions; 3.03 m (N/S) by 1.04 m (E/W). Depth 0.28 m. Probable midden spread. Filled by (609).
609	Fill	Dark grey brown sandy silt with <20% gravel inclusions and occasional charcoal fragments. Contains Neolithic ceramic sherds. Fill of [608]
610	Cut	Irregular cut feature with moderately sloping concave sides and flat base. Dimensions; 0.50 m in diameter. Depth 0.10 m. Filled by (611). Truncated pit. Heavily Bioturbated by animal burrowing.
611	Fill	Mixed grey brown sandy silt with <20% gravel inclusions and occasional charcoal fragments. Fill of [610]
612	Cut	Circular cut feature with steeply sloping concave sides and round base. Dimensions; 0.35 m in diameter. Depth 0.27 m. Filled by (613). Post-hole.
613	Fill	Medium grey brown sandy silt with <10% gravel inclusions. Fill of [612]
614	Cut	Linear cut with gently sloping concave sides and flat base. Dimensions; 3.10 m (N/S) by 1.05 m (E/W). Depth 0.14 m. Erosional hollow. Cut Filled by (615).
615	Fill	Medium grey brown sandy silt with <10% gravel inclusions. Contains charcoal fragments. Fill of [614]
616	Cut	Circular cut feature with steeply sloping concave sides and round base. Dimensions; 0.26 m in diameter. Depth 0.20 m. Filled by (617). Post-hole.
617	Fill	Medium grey brown sandy silt with <10% gravel inclusions. Contains several packing stones. Fill of [616]
618	Cut	Circular cut feature with gently sloping concave sides and round base. Dimensions; 0.75 m in diameter. Depth 0.11 m. Filled by (619). Pit
619	Fill	Dark grey brown sandy silt with <10% gravel inclusions. Fill of [618]
620	Cut	Circular cut feature with steeply sloping concave sides and round base. Dimensions; 0.52 m in diameter. Depth 0.18 m. Filled by (621). Pit
621	Fill	Dark grey brown sandy silt with <10% gravel inclusions. Fill of [620]
622	Cut	Oval cut with moderately sloping concave sides and round base. Dimensions; 1.21 m (N/S) by 0.91 m (E/W). Depth 0.32 m. Pit. Filled by (623).
623	Fill	Very dark brown sandy silt with <10% gravel inclusions. Contains occasional charcoal fragments Fill of [622]
624	Cut	Oval cut with moderately sloping concave sides and round base. Dimensions; 0.67 m (N/S) by 0.76 m (E/W). Depth 0.08 m. Pit. Filled by (625).
625	Fill	Light grey brown sandy silt with <10% gravel inclusions. Fill of [624]
626	Cut	Circular cut feature with steeply sloping concave sides and round base. Dimensions; 1.15 m in diameter. Depth 0.40 m. Filled by (627). Pit
627	Fill	Mixed grey brown sandy silt with <10% gravel inclusions. Fill of [626]
628	Cut	Circular cut feature with steeply sloping concave sides and round base. Dimensions; 0.60 m in diameter. Depth 0.30 m. Filled by (629). Pit
629	Fill	Medium red brown sandy silt with <10% gravel inclusions. Fill of [628]
630	Cut	Large circular cut feature with moderately sloping concave sides and flat base. Dimensions; 1.10 m in diameter. Depth 0.20 m. Filled by (631). Stone filled Pit/Fire-pit.
631	Fill	Dark brown sandy silt with >50% fire-cracked stone. Contains charcoal fragments. Fill of [630]
632	Cut	Circular cut feature with gently sloping concave sides and round base. Dimensions; 0.28 m in diameter. Depth 0.09 m. Filled by (631). Truncated pit/post-hole
633	Fill	Dark grey brown sandy silt with >10% gravel inclusions. Fill of [632]
634	Cut	Oval cut with moderately sloping concave sides and round base. Dimensions; 1.40 m (N/S) by 0.80 m (E/W). Depth 0.08 m. Pit. Filled by (635).

635	Fill	Medium red brown sandy silt with <10% gravel inclusions. Fill of [634]
636	Cut	Sub-circular cut with moderately sloping concave sides and round base. Dimensions; 0.80 m (N/S) by 0.70 m (E/W). Depth 0.23 m. Pit. Filled by (635).
637	Fill	Dark grey brown sandy silt with >10% fire-cracked stone and > 40% burnt organic material. Fill of [636]. Contains SF 2 (quartz flakes).
638	Cut	Irregular sub-circular cut with gently sloping concave sides and round base. Dimensions; 0.88 m (N/S) by 0.71 m (E/W). Depth 0.23 m. Fire-Pit or possible hearth. Filled by (639).
639	Fill	Very dark brown sandy silt with <10% gravel inclusions. Contains numerous charcoal pieces. Fill of [638]
640	Cut	Circular cut feature with steeply sloping concave sides and round base. Dimensions; 0.29 m in diameter. Depth 0.18 m. Filled by (641). Truncated pit/post-hole
641	Fill	Dark grey brown sandy silt with >10% gravel inclusions. Fill of [640]
642	Cut	Oval cut with moderately sloping concave sides and flat base. Dimensions; 0.71 m (N/S) by 0.41 m (E/W). Depth 0.14 m. Pit. Filled by (643).
643	Fill	Medium brown sandy silt with <10% gravel inclusions. Fill of [642]
644	Cut	Sub-circular cut with moderately sloping concave sides and round base. Dimensions; 0.33 m (N/S) by 0.45 m (E/W). Depth 0.26 m. Pit. Filled by (645).
645	Fill	Medium brown sandy silt with <10% gravel inclusions. Fill of [644]
646	Cut	Circular cut feature with gently sloping concave sides and round base. Dimensions; 0.30 m in diameter. Depth 0.15 m. Filled by (647). Truncated pit/post-hole
647	Fill	Medium brown sandy silt with <10% gravel inclusions. Fill of [646]
648	Cut	Oval cut with steeply sloping concave sides and rounded base. Dimensions; 0.65 m (N/S) by 0.50 m (E/W). Depth 0.25 m. Pit. Filled by (649).
649	Fill	Medium grey brown sandy silt with <10% gravel inclusions. Fill of [648]
650	Cut	Sub-circular cut with steeply sloping concave sides and round base. Dimensions; 0.60 m (N/S) by 0.70 m (E/W). Depth 0.45 m. Pit. Filled by (651).
651	Fill	Dark brown sandy silt with >25% fire-cracked stone. Contains charcoal fragments and burnt bone. Fill of [650]
652	Cut	Irregular sub-circular cut with moderately sloping concave sides and round base. Dimensions; 0.95 m (N/S) by 1.15 m (E/W). Depth 0.26 m. Possible modern pit. Filled by (653).
653	Fill	Medium grey brown sandy silt with <10% gravel inclusions. Fill of [652]
654	Cut	Circular cut feature with gently sloping concave sides and round base. Dimensions; 0.58 m in diameter. Depth 0.08 m. Filled by (655). Truncated pit.
655	Fill	Medium grey brown sandy silt with <10% gravel inclusions. Fill of [654]
656	Cut	Circular cut feature with steeply sloping concave sides and round base. Dimensions; 0.31 m in diameter. Depth 0.21 m. Filled by (657). Truncated post-hole.
657	Fill	Dark grey brown sandy silt with <10% gravel inclusions. Fill of [656]
658	Cut	Oval cut with gently sloping concave sides and rounded base. Dimensions; 0.37 m (N/S) by 0.28 m (E/W). Depth 0.12 m. Pit. Filled by (659).
659	Fill	Dark grey brown sandy silt with <10% gravel inclusions. Fill of [658]
660	Cut	Circular cut feature with moderately sloping concave sides and round base. Dimensions; 0.50 m in diameter. Depth 0.15 m. Filled by (661). Truncated pit.
661	Fill	Medium red brown sandy silt with <10% gravel inclusions. Fill of [662]
662	Cut	Circular cut feature with steeply sloping concave sides and round base. Dimensions; 0.29 m in diameter. Depth 0.15 m. Filled by (663). Truncated post-hole.

663	Fill	Dark grey brown sandy silt with <10% gravel inclusions. Fill of [662]
664	Cut	Circular cut feature with moderately sloping concave sides and flat base. Dimensions; 0.50 m in diameter. Depth 0.32 m. Filled by (665). Pit.
665	Fill	Dark organic grey brown sandy silt with <20% fire-cracked stone. Fill of [664]. Contains SF 3 (Saddle Quern)
666	Cut	Circular cut feature with steeply sloping concave sides and round base. Dimensions; 0.38 m in diameter. Depth 0.17 m. Filled by (667). Truncated post-hole.
667	Fill	Dark grey brown sandy silt with <10% gravel inclusions. Fill of [666]
668	Cut	Circular cut feature with steeply sloping concave sides and round base. Dimensions; 0.22 m in diameter. Depth 0.13 m. Filled by (669). Truncated post-hole.
669	Fill	Dark grey brown sandy silt with <10% gravel inclusions. Fill of [668]
670	Cut	Oval cut with gently sloping concave sides and rounded base. Dimensions; 1.56 m (N/S) by 0.73 m (E/W). Depth 0.23 m. Pit. Filled by (671).
671	Fill	Medium grey brown sandy silt with <10% gravel inclusions. Fill of [670]
672	Cut	Square cut feature with steeply sloping concave sides and flat base. Dimensions; 0.80 m in diameter. Depth 0.45 m. Filled by (673). Pit
673	Fill	Medium grey brown sandy silt with <10% gravel inclusions. Fill of [672]
674	Cut	Circular cut feature with moderately sloping concave sides and flat base. Dimensions; 0.60 m in diameter. Depth 0.15 m. Filled by (675). Truncated pit
675	Fill	Dark grey brown sandy silt with <10% gravel inclusions and occasional fire-cracked stone. Fill of [674]
676	Cut	Oval cut with moderately sloping concave sides and uneven flat base. Dimensions; 0.80 m (N/S) by 0.60 m (E/W). Depth 0.20 m. Pit. Filled by (677). Contains SF 4 (prehistoric ceramics)
677	Fill	Dark grey brown sandy silt with <10% gravel inclusions and <20% fire-cracked stone. Fill of [676]. Contains SF 4 (prehistoric ceramics)
678	Cut	Circular cut feature with steeply sloping concave sides and rounded base. Dimensions; 0.25 m in diameter. Depth 0.13 m. Filled by (679). Truncated pit/post-hole
679	Fill	Dark grey brown sandy silt with <10% gravel inclusions. Fill of [678]
680	Cut	Circular cut feature with steeply sloping concave sides and rounded base. Dimensions; 0.25 m in diameter. Depth 0.18 m. Filled by (681). Truncated pit/post-hole
681	Fill	Dark grey brown sandy silt with <10% gravel inclusions. Fill of [680]
682	Cut	Circular cut feature with steeply sloping concave sides and rounded base. Dimensions; 0.28 m in diameter. Depth 0.28 m. Filled by (681). Truncated pit/post-hole
683	Fill	Dark grey brown sandy silt with <10% gravel inclusions. Fill of [682]
684	Cut	Circular cut feature with steeply sloping concave sides and rounded base. Dimensions; 0.70 m in diameter. Depth 0.40 m. Filled by (681). Pit/post-hole
685	Fill	Dark grey brown sandy silt with <10% gravel inclusions. Fill of [684]

Area B

Context	Type	Description
686	Cut	Circular cut feature with steeply sloping concave sides and rounded base. Dimensions; 0.70 m in diameter. Depth 0.40 m. Filled by (681). Pit. Contains SF 6 (prehistoric ceramics)
687	Fill	Compact red brown sandy silt. Contains SF 6 (prehistoric ceramics)
688	Cut	Circular cut feature with steeply sloping concave sides and flat base. Dimensions; 0.70 m in diameter. Depth 0.30 m. Filled by (689). Pit
689	Fill	Dark grey brown sandy silt with <10% gravel inclusions. Fill of [688]. Contains numerous charcoal fragments and SF ? (prehistoric pottery sherds).
690	Cut	Circular cut feature with steeply sloping concave sides and flat base. Dimensions; 0.90 m in diameter.

		Depth 0.30 m. Filled by (691). Pit. Indeterminate relationship with pit [704].
691	Fill	Dark grey brown sandy silt with <20% large stone inclusions. Fill of [690]. Contains numerous charcoal chunks and SF ? (prehistoric pottery sherds).
692	Cut	Circular cut feature with steeply sloping concave sides and round base. Dimensions; 0.45 m in diameter. Depth 0.30 m. Filled by (693). Pit
693	Fill	Grey brown sandy silt with <10% gravel inclusions. Fill of [692]
694	Cut	Circular cut feature with steeply sloping concave sides and round base. Dimensions; 0.40 m in diameter. Depth 0.20 m. Filled by (695). Pit
695	Fill	Grey brown sandy silt with <10% gravel inclusions. Fill of [694]
696	Cut	Circular cut feature with steeply sloping concave sides and round base. Dimensions; 0.40 m in diameter. Depth 0.20 m. Filled by (697). Pit
697	Fill	Grey brown sandy silt with <10% gravel inclusions. Fill of [696]
698	Cut	Circular cut feature with steeply sloping concave sides and round base. Dimensions; 0.50 m in diameter. Depth 0.20 m. Filled by (699). Pit
699	Fill	Grey brown sandy silt with <10% gravel inclusions. Fill of [698]
700	Cut	Rectangular cut feature with steeply sloping concave sides and flat base. Dimensions; 1.50 m (N/S) by 0.80 m (E/W). Depth 0.20 m. Probable modern pit. Filled by (701).
701	Fill	Grey brown sandy silt with re-deposited clay.<10% gravel inclusions. Fill of [700]
702	Cut	Circular cut feature with steeply sloping concave sides and round base. Dimensions; 0.50 m in diameter. Depth 0.20 m. Filled by (703). Pit
703	Fill	Dark grey brown sandy silt with <10% gravel inclusions. Fill of [702]
704	Cut	Circular cut feature with steeply sloping concave sides and round base. Dimensions; 0.60 m in diameter. Depth 0.20 m. Filled by (705). Pit. Indeterminate relationship with pit [690].
705	Fill	Dark grey brown sandy silt with <20% large stone inclusions. Fill of [704]. Contains numerous charcoal chunks.
706	Cut	Oval cut with moderately sloping concave sides and rounded base. Dimensions; 1.80 m (N/S) by 1.00 m (E/W). Depth 0.40 m. Pit. Filled by (707).
707	Fill	Compact grey brown sandy silt with <10% rounded stone inclusions. Fill of [706]
708	Cut	Circular cut feature with steeply sloping concave sides and round base. Dimensions; 0.40 m in diameter. Depth 0.22 m. Filled by (709). Truncated post-hole.
709	Fill	Medium grey brown sandy silt with <20% gravel inclusions. Fill of [708]
710	Cut	Circular cut feature with steeply sloping concave sides and round base. Dimensions; 0.45 m in diameter. Depth 0.20 m. Filled by (711). Post-hole.
711	Fill	Medium grey brown sandy silt with <20% gravel inclusions. Fill of [710]
712	Cut	Circular cut feature with steeply sloping concave sides and round base. Dimensions; 0.32 m in diameter. Depth 0.14 m. Filled by (713). Truncated post-hole.
713	Fill	Dark grey brown organic burnt sandy silt. Fill of [712]
714	Cut	Large circular cut feature with steeply sloping concave sides and round base. Dimensions; 1.82 m in diameter. Depth 0.75 m. Filled by (715). Pit.
715	Fill	Medium grey brown sandy silt with <20% gravel inclusions. Fill of [714]
716	Cut	Circular cut feature with steeply sloping concave sides and round base. Dimensions; 0.44 m in diameter. Depth 0.30 m. Filled by (717). Post-hole.
717	Fill	Dark grey brown sandy silt with <10% gravel inclusions. Fill of [716]
718	Cut	Circular cut feature with steeply sloping concave sides and flat base. Dimensions; 0.40 m in diameter. Depth 0.35 m. Filled by (717). Post-hole.
719	Fill	Pale brown sandy silt with <10% gravel inclusions. Occasional charcoal fragments fill of [718]
720	Cut	Sub-circular cut with steeply sloping concave sides and round base. Dimensions; 0.60 m (N/S) by 0.40 m (E/W). Depth 0.20 m. Pit. Filled by (721).
721	Fill	Medium grey brown sandy silt with <10% gravel inclusions. Fill of [720]
722	Cut	Circular cut feature with moderately sloping concave sides and base. Dimensions; 0.40 m in diameter. Depth 0.14 m. Filled by (723). Post-hole.
723	Fill	Medium brown sandy silt with <10% gravel inclusions. Fill of [722]
724	Cut	Circular cut feature with moderately sloping concave sides and base. Dimensions; 0.40 m in diameter. Depth 0.18 m. Filled by (725). Truncated post-hole.
725	Fill	Medium brown sandy silt with <10% gravel inclusions. Fill of [724]
726	Cut	Sub-circular cut with moderately sloping concave sides and round base. Dimensions; 0.28 m (N/S) by 0.39 m (E/W). Depth 0.16 m. Pit/post-hole. Filled by (727).

727	Fill	Medium brown sandy silt with <20% gravel inclusions. Fill of [726]
728		Large curvilinear cut feature. Steeply sloping sides with rounded base Slot 2 with more moderately sloping sides in terminus Slots 1 & 3. Dimensions; 6.00 m (NW/S) by 1.30 m (E/SW). Depth 0.50 m Slot 2, 0.20 m Slot 1 & 3. Ring-ditch. Filled by (729). Contains Hammerstone and Saddle-quern SF ?.
729	Fill	Medium brown sandy silt with <10% gravel inclusions. Contains numerous larger sub-rounded stones within the center of the feature. Fill of [728]. Contains Hammerstone and Saddle-quern SF ?.
730	Cut	Oval cut with varying sloping concave sides and irregular rounded base. Dimensions; 0.60 m (N/S) by 1.30 m (E/W). Depth 0.30 m. Pit. Filled by (731).
731	Fill	Mixed deposit of medium grey brown sandy silt and dark brown sandy silt with numerous large sub-rounded stones. Fill of [730]. Contains prehistoric ceramics SF ?
732	Cut	Oval cut with varying sloping concave sides and irregular flat base. Dimensions; 0.70 m (N/S) by 1.50 m (E/W). Depth 0.25 m. Pit. Filled by (733).
733	Fill	Mixed deposit of medium grey brown sandy silt and dark brown sandy silt with numerous large sub-rounded stones. Fill of [732]. Contains prehistoric ceramics SF ?
734	Cut	Circular cut feature with steeply sloping concave sides and base. Dimensions; 0.30 m in diameter. Depth 0.21 m. Filled by (735). Truncated post-hole.
735	Fill	Medium brown sandy silt with <10% gravel inclusions. Fill of [734]. Contains charcoal fragments.
736	Cut	Sub-circular cut with steeply sloping concave sides and flat base. Dimensions; 1.44 m (N/S) by 1.30 m (E/W). Depth 0.42 m. Pit. Filled by (737) & (738). Cut by pit [739].
737	Fill	Dark brown sandy silt with <10% gravel inclusions. Fill 0.13 m in depth. Contains numerous charcoal fragments. Lower fill of [736] underlies (737).
738	Fill	Medium brown sandy silt with <10% gravel inclusions. Fill 0.29 m in depth. Upper fill of [736]. Contains occasional charcoal fragments.
739	Cut	Oval cut with gently sloping concave sides and rounded base. Dimensions; 1.13 m (N/S) by 0.73 m (E/W). Depth 0.12 m. Pit. Filled by (740). Pit cuts [736].
740	Fill	Dark brown sandy silt with <10% gravel inclusions. Fill of [739].
741	Cut	Sub-circular cut with steeply sloping concave sides and flat base. Dimensions; 0.53 m (N/S) by 0.44 m (E/W). Depth 0.24 m. Pit. Filled by (742).
742	Fill	Dark brown sandy silt with <10% gravel inclusions. Contains occasional charcoal fragments. Fill of [741].
743	Cut	Circular cut feature with steeply sloping concave sides and flat base. Dimensions; 0.85 m in diameter. Depth 0.15 m. Filled by (744). Pit.
744	Fill	Medium brown sandy silt with <10% gravel inclusions. Fill of 0.15 m.
745	Cut	Oval cut with moderately sloping concave sides and rounded base. Dimensions; 0.80 m (N/S) by 1.40 m (E/W). Depth 0.30 m. Pit. Filled by (740). Pit cuts [736].
746	Fill	Medium brown sandy silt with numerous sub-rounded stones and occasional charcoal fragments. Fill of [745].
747	Cut	Circular cut feature with steeply sloping concave sides and rounded base. Dimensions; 1.03 m in diameter. Depth 0.33 m. Filled by (748). Pit.
748	Fill	Dark brown sandy silt with <10% gravel inclusions. Contains occasional charcoal fragments. Fill of [747].
749	Cut	Circular cut feature with steeply sloping concave sides and rounded base. Dimensions; 0.30 m in diameter. Depth 0.16 m. Filled by (750). Post-hole.
750	Fill	Dark red brown sandy silt with >10% gravel inclusions. Fill of [749].
751	Cut	Circular cut feature with steeply sloping concave sides and rounded base. Dimensions; 0.32 m in diameter. Depth 0.13 m. Filled by (752). Post-hole.
752	Fill	Dark red brown sandy silt with >10% gravel inclusions. Fill of [751].
753	Cut	Circular cut feature with steeply sloping concave sides and rounded base. Dimensions; 0.33 m in diameter. Depth 0.26 m. Filled by (752). Post-hole.
754	Fill	Dark red brown sandy silt with >10% gravel inclusions and several large packers. Fill of [751].
755	Cut	Circular cut feature with steeply sloping concave sides and rounded base. Dimensions; 0.33 m in diameter. Depth 0.25 m. Filled by (756). Post-hole.
756	Fill	Dark red brown sandy silt with >10% gravel inclusions and several large packers. Fill of [755].
757	Cut	Oval cut with moderately sloping concave sides and irregular base. Dimensions; 1.37 m (N/S) by 1.10 m (E/W). Depth 0.35 m. Pit. Filled by (758).
758	Fill	Dark brown sandy silt with >10% gravel inclusions. Fill of [757].
759	Cut	Oval cut with moderately sloping concave sides and flat base. Dimensions; 1.10 m (N/S) by 1.00 m (E/W). Depth 0.25 m. Pit. Filled by (760).
760	Fill	Dark red brown sandy silt with >10% gravel inclusions and occasional charcoal fragments. Fill of [761].

761	Cut	Circular cut feature with steeply sloping concave sides and rounded base. Dimensions; 0.34 m in diameter. Depth 0.25 m. Filled by (762). Post-hole.
762	Fill	Dark red brown sandy silt with >10% gravel inclusions and occasional charcoal fragments. Fill of [761].
763	Cut	Circular cut feature with steeply sloping concave sides and rounded base. Dimensions; 0.29 m in diameter. Depth 0.18 m. Filled by (764). Post-hole.
764	Fill	Dark brown sandy silt with >10% gravel inclusions. Fill of [763].
765	Cut	Sub-circular cut with steeply sloping concave sides and rounded base. Dimensions; 0.66 m (N/S) by 0.59 m (E/W). Depth 0.18 m. Pit. Filled by (766).
766	Fill	Dark brown sandy silt with <10% gravel inclusions. Fill of [765].
767	Cut	Circular cut feature with steeply sloping concave sides and rounded base. Dimensions; 0.30 m in diameter. Depth 0.15 m. Filled by (768). Pit/post-hole.
768	Fill	Dark brown sandy silt with <10% gravel inclusions. Contains occasional charcoal fragments. Fill of [767].
769	Cut	Circular cut feature with steeply sloping concave sides and rounded base. Dimensions; 0.38 m in diameter. Depth 0.22 m. Filled by (770). Pit/post-hole.
770	Fill	Medium brown sandy silt with <10% gravel inclusions. Contains occasional charcoal fragments. Fill of [769].
771	Cut	Circular cut feature with moderately sloping concave sides and rounded base. Dimensions; 0.40 m in diameter. Depth 0.23 m. Filled by (770). Pit/post-hole.
772	Fill	Medium red brown sandy silt with >10% gravel inclusions. Fill of [771].
773	Cut	Sub-circular cut with gently sloping concave sides and rounded base. Dimensions; 0.92 m (N/S) by 0.86 m (E/W). Depth 0.13 m. Pit. Filled by (774).
774	Fill	Dark brown organic sandy silt with frequent charcoal fragments. Fill of [773].
775	Cut	Sub-circular cut with gently sloping concave sides and rounded base. Dimensions; 0.45 m (N/S) by 0.38 m (E/W). Depth 0.08 m. Pit. Filled by (776).
776	Fill	Dark brown organic sandy silt with frequent charcoal fragments. Fill of [775].
777	Cut	Sub-circular cut with almost vertical sides and rounded base. Dimensions; 1.21 m (N/S) by 0.90 m (E/W). Depth 0.31 m. Pit. Filled by (778).
778	Fill	Dark brown organic coarse sandy silt with occasional charcoal fragments and sub-rounded stone. Fill of [777].
779	Cut	Circular cut feature with shallow sloping concave sides and rounded base. Dimensions; 0.30 m in diameter. Depth 0.14 m. Filled by (780). Truncated post-hole.
780	Fill	Medium grey brown sandy silt with <20% gravel inclusions. Fill of [779]
781	Cut	Circular cut feature with steeply sloping concave sides and rounded base. Dimensions; 0.30 m in diameter. Depth 0.19 m. Filled by (782). Truncated post-hole.
782	Fill	Medium grey brown sandy silt with <20% gravel inclusions. Fill of [781]
783	Cut	Circular cut feature with moderately sloping concave sides and rounded base. Dimensions; 0.40 m in diameter. Depth 0.19 m. Filled by (784). Truncated post-hole.
784	Fill	Medium grey brown sandy silt with <20% gravel inclusions. Fill of [783]
785	Cut	Circular cut feature with moderately sloping concave sides and rounded base. Dimensions; 0.23 m in diameter. Depth 0.14 m. Filled by (786). Truncated post-hole.
786	Fill	Medium grey brown sandy silt with <20% gravel inclusions. Fill of [785]
787	Cut	Sub-circular cut with almost vertical sides and rounded base. Dimensions; 0.45 m (N/S) by 0.38 m (E/W). Depth 0.36 m. Pit. Filled by (788).
788	Fill	Medium grey brown sandy silt with <20% gravel inclusions. Fill of [785]
789	Cut	Oval cut with steeply sloping sides and rounded base. Dimensions; 1.62 m (N/S) by 0.90 m (E/W). Depth 0.38 m. Pit. Filled by (790).
790	Fill	Medium grey brown sandy silt with <20% gravel inclusions. Fill of [789]. Contains occasional charcoal and prehistoric ceramics [SF ??]
791	Cut	Circular cut feature with gently sloping concave sides and rounded base. Dimensions; 0.56 m in diameter. Depth 0.12 m. Filled by (792). Truncated pit/post-hole.
792	Fill	Medium grey brown sandy silt with <20% gravel inclusions. Fill of [791]
793	Cut	Oval cut with very steeply sloping sides and rounded base. Dimensions; 0.60 m (N/S) by 0.42 m (E/W). Depth 0.17 m. Pit. Filled by (794).
794	Fill	Medium grey brown sandy silt with <20% gravel inclusions. Fill of [793]
795	Cut	Sub-circular cut with gently sloping sides and rounded base. Dimensions; 0.54 m (N/S) by 0.43 m (E/W). Depth 0.09 m. Pit. Filled by (796).
796	Fill	Dark grey brown sandy silt with <20% gravel inclusions. Fill of [795]

797	Cut	Oval cut with steeply sloping sides and flattish base. Dimensions; 0.84 m (N/S) by 0.70 m (E/W). Depth 0.21 m. Pit. Filled by (798).
798	Fill	Medium grey brown sandy silt with <20% gravel inclusions. Fill of [797]
799	Cut	Circular cut feature with steeply sloping concave sides and rounded base. Dimensions; 0.70 m in diameter. Depth 0.36 m. Filled by (800). Pit.
800	Fill	Dark grey brown sandy silt with <20% gravel inclusions. Fill of [799]
801	Cut	Circular cut feature with steeply sloping concave sides and rounded base. Dimensions; 0.45 m in diameter. Depth 0.25 m. Filled by (802). Pit.
802	Fill	Medium grey brown sandy silt with <10% gravel inclusions. Fill of [801]
803	Cut	Circular cut feature with moderately sloping concave sides and rounded base. Dimensions; 0.80 m in diameter. Depth 0.20 m. Filled by (803). Pit.
804	Fill	Dark grey brown sandy silt with <10% gravel inclusions. Fill of [803]

APPENDIX 3: Excavation Small Finds Register

Small Find	Context	Description
01	609	Prehistoric ceramics including decorated rim
02	637	2 x quartz flakes
03	665	Saddle-quern
04	677	Prehistoric ceramics including rim and body sherds
05	677	Saddle-quern
06	677	Side/end scraper
07	729	Saddle-quern
08	729	Hammerstone
09	689	Prehistoric ceramics
10	733	Prehistoric ceramics
11	691	Prehistoric rim-sherd
12	687	Prehistoric ceramics
13	731	Prehistoric ceramics
14	790	Prehistoric ceramics
15	790	Prehistoric ceramics

APPENDIX 4: Excavation Sample Register

Context	Quantity (Litres)	Context	Quantity (Litres)
605	10	707	10
607	10	709	10
609	30	711	10
611	10	713	10
613	10	715	20
615	20	717	10
617	10	719	10
619	20	721	10
621	20	723	10
623	20	725	10
625	10	727	10
627	20	729	20
629	20	731	20
631	20	733	10
633	10	736	10
635	20	737	20
637	20	738	10
639	20	740	10
641	10	742	10
643	10	744	10
645	10	746	20
647	10	748	20
649	20	750	10
651	20	752	10
653	20	754	10
655	20	756	10
657	10	758	20
659	10	760	20
661	10	762	10
663	20	764	10
665	20	772	10
667	10	774	20
669	10	776	10
671	20	778	20
673	20	780	10
675	10	782	10
677	20	784	10
679	10	786	10
681	10	788	20
683	10	790	20
685	20	792	10
687	20	794	10
689	20	796	10
691	20	798	20
693	10	800	20
695	10	802	20
697	10	804	20
699	10		
701	10		
703	10		
705	20		

APPENDIX 5: Excavation Drawing Register

Area A Sections (Scale 1:10)

Number	Context	Description
01	502	North facing section
02	504-506	East facing section
03	508	West facing section
04	541	West facing section
05	543	South facing section
06	545	South facing section
07	547	South facing section
08	520	South facing section
09	531	South facing section Slot A
10	531	North facing section Slot B
11	522	South facing section
12	524	South facing section
13	510	North-west facing section
14	512	North-west facing section
15	514	North facing section
16	516	South-east facing section
17	516	South-west facing section
18	516	North-west facing section
19	516	North -east facing section
20	518	West facing section
21	529	South facing section
22	527	East facing section
23	526	North-west facing section
24	526	South-east facing section
25	526	South-west facing section
26	539	South facing section
27	526	North -east facing section
28	535	North -east facing section
29	537	North -east facing section
30	553	South facing section
31	551	South facing section

Area B Sections (Scale 1:10)

Number	Context	Description
32	686	West facing section
33	706	South facing section
34	714	East facing section
35	688	West facing section
36	708	West facing section
37	718	East facing section
38	710	West facing section
39	722	South facing section
40	724	South facing section
41	726	South facing section
42	801	West facing section
43	690	West facing section
44	716	East facing section
45	712	West facing section
46	728	South facing section
47	728	East facing section

48	728	North -east facing section
49	728	South facing section
50	692	South facing section
51	694	East facing section
52	735	East facing section
53	696	South facing section
54	698	South facing section
55	700	West facing section
56	720	South facing section
57	736	East facing section
58	739	South-west facing section
59	741	East facing section
60	702	East facing section
61	745	South facing section
62	757	East facing section
63	730	North facing section
64	732	North facing section
65	747	South facing section
66	763	East facing section
67	771	East facing section
68	779	West facing section
69	783	East facing section
70	781	East facing section
71	785	East facing section
72	743	South facing section
73	765	West facing section
74	767	West facing section
75	769	West facing section
76	787	East facing section
77	791	East facing section
78	749	West facing section
79	751	North-west facing section
80	753	North-west facing section
81	755	West facing section
82	759	North-east facing section
83	761	East facing section
84	773	East facing section
85	775	East facing section
86	803	West facing section
87	777	East facing section
88	795	West facing section
89	791	West facing section
90	797	East facing section
91	793	North-east facing section
92	799	South-east facing section

Area F Sections (Scale 1:10)

Number	Context	Description
--------	---------	-------------

93	566	North-west facing section
94	562-564	West facing section
95	568	North-west facing section
96	574	North facing section
97	576	North facing section
98	578	North facing section
99	580	South facing section
100	582	North facing section
101	592	West facing section
102	684	East facing section
103	570	North-west facing section
104	572	North-west facing section
105	598	North-west facing section
106	584	East facing section
107	586	South facing section
108	588	South facing section
109	590	North facing section
110	602	East facing section
111	602	South-east facing section
112	604	South-west facing section
113	618	North-east facing section
114	620	North-east facing section
115	624	East facing section
116	632	North-east facing section
117	662	South-east facing section
118	600	East facing section
119	596	East facing section
120	594	East facing section
121	560	East facing section
122	672	West facing section
123	676	East facing section
124	674	East facing section
125	558	East facing section
126	606	East facing section
127	612	East facing section
128	614	West facing section
129	608	West facing section
130	616	East facing section
131	664	East facing section
132	610	West facing section
133	622	West facing section
134	682	West facing section
135	678	West facing section
136	626	North facing section
137	644	West facing section
138	646	East facing section
139	634	West facing section
140	642	North facing section
141	652	East facing section
142	638	South-east facing section
143	640	North-east facing section
144	630	East facing section
145	636	East facing section
146	654	West facing section
147	656	North-west facing section
148	658	North-west facing section

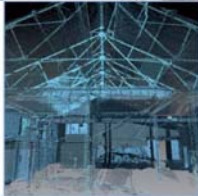
149	666	North facing section
150	668	North facing section
151	680	North-west facing section
152	628	East facing section
153	670	East facing section
154	648	East facing section
155	651	East facing section

Plans (Scale 1:50)

Number	Context	Description
156	Var	Area A 1 of 3
157	Var	Area A 2 of 3
158	Var	Area A 3 of 3
159	Var	Area B 1 of 3
160	Var	Area B 2 of 3
161	Var	Area B 3 of 3
162	Var	Area F 3 of 3
163	Var	Area F 3 of 3
164	Var	Area F 3 of 3

APPENDIX 6: Discovery and Excavation in Scotland Entry

LOCAL AUTHORITY:	Moray Council
PROJECT TITLE/SITE NAME:	R3 Grantown Road, Forres 2013 Phase 1 Excavation
PROJECT CODE:	AOC 21581
PARISH:	Forres
NAME OF CONTRIBUTOR:	Rob Engl
NAME OF ORGANISATION:	AOC Archaeology Group
TYPE(S) OF PROJECT:	Archaeological Excavation
NMRS NO(S):	NMRS No. NJ05NW 72 and NJ05NW 116
SITE/MONUMENT TYPE(S):	Prehistoric negative features including three ring-ditch and two partial post-ring structures.
SIGNIFICANT FINDS:	Neolithic ceramics, coarse stone, chipped stone
NGR:	NMRS: NJ 0308 5720
START DATE (this season)	28 th January 2013
END DATE (this season)	22 nd February 2013
PREVIOUS WORK (incl. DES)	DES 2008, DES 2010
MAIN DESCRIPTION: (May include information from other fields)	<p>This report presents the results of an archaeological excavation undertaken by AOC Archaeology Group on a proposed residential development on the southern outskirts of Forres, Morayshire. The works, undertaken prior to a residential development, followed on from previous phases of archaeological evaluation and excavation undertaken within a 34 ha land parcel situated on rough pasture centred at NGR: NJ 0308 5720.</p> <p>The evaluation of 2008 identified features across the entire site (Area of roundabout, Areas A, B, C, D, E and F). This comprised linear ditches, pits and post-holes. Artefactual material recovered included Grooved Ware pottery, coarse stone, flint and later prehistoric ceramics.</p> <p>A subsequent phase of archaeological works was required based on the results of this evaluation. The 2013 Phase 1 excavation comprised the complete excavation of a series of features identified specifically within Areas A, B and F.</p> <p>The excavation identified the remains of a series of truncated prehistoric structures including two ring-ditch roundhouses, post-ring structures and isolated pits. Artefactual evidence was recovered in the form of prehistoric ceramic, coarse stone and chipped stone assemblages.</p>
PROPOSED FUTURE WORK:	Excavation and post-excavation phases
CAPTION(S) FOR ILLUSTRS:	n/a
SPONSOR OR FUNDING BODY:	Springfield Properties Ltd
ADDRESS OF MAIN CONTRIBUTOR:	C/o AOC Archaeology Group
EMAIL ADDRESS:	Admin@aocarchaeology.com



AOC Archaeology Group, Edgefield Industrial Estate, Edgefield Road, Loanhead EH20 9SY
tel: 0131 440 3593 | fax: 0131 440 3422 | e-mail: edinburgh@aocarchaeology.com

www.aocarchaeology.com