

# Polwarth Street, Galston, East Ayrshire: Archaeological Evaluation

## Data Structure Report

AOC Project 21978

Oasis No. aocarcha1-146379

27<sup>th</sup> March 2013



ARCHAEOLOGY

HERITAGE

CONSERVATION

# Polwarth Street, Galston, East Ayrshire: Archaeological Evaluation Data Structure Report

<b>On Behalf of:</b>	<b>Santon Retail Limited, Tesco Stores Limited and Royal Bank of Scotland Limited</b>
<b>National Grid Reference (NGR):</b>	<b>NS 5022 3688</b>
<b>AOC Project No:</b>	<b>21978</b>
<b>Prepared by:</b>	<b>Kevin Paton</b>
<b>Illustration by:</b>	<b>Kevin Paton</b>
<b>Date of Fieldwork:</b>	<b>25<sup>th</sup> to 26<sup>th</sup> March 2013</b>
<b>Date of Report:</b>	<b>27<sup>th</sup> March 2013</b>

This document has been prepared in accordance with AOC standard operating procedures.

**Author: Kevin Paton**

**Date: 27<sup>th</sup> March 2013**

**Approved by: Martin Cook**

**Date: 27<sup>th</sup> March 2013**

**Draft/Final Report Stage: Draft**

**Date: 27<sup>th</sup> March 2013**

**Enquiries to:** AOC Archaeology Group  
Edgefield Industrial Estate  
Edgefield Road  
Loanhead  
EH20 9SY

Tel. 0131 440 3593  
Fax. 0131 440 3422  
e-mail. [admin@aocarchaeology.com](mailto:admin@aocarchaeology.com)



## Contents

	Page
List of Illustrations .....	3
List of Plates .....	3
List of Appendices .....	3
Abstract.....	4
<b>1 INTRODUCTION .....</b>	<b>5</b>
1.1 Background .....	5
1.2 Location .....	5
1.3 Archaeological Background .....	5
<b>2 OBJECTIVES .....</b>	<b>5</b>
<b>3 METHODOLOGY .....</b>	<b>5</b>
<b>4 RESULTS .....</b>	<b>6</b>
<b>5 CONCLUSION AND RECOMMENDATIONS.....</b>	<b>7</b>
<b>6 REFERENCES .....</b>	<b>7</b>
<b>APPENDIX 1: Trench Descriptions .....</b>	<b>9</b>
<b>APPENDIX 3: Photographic Record .....</b>	<b>10</b>
<b>APPENDIX 3: ‘Discovery and Excavation in Scotland’ Report.....</b>	<b>11</b>

This report has been prepared for the benefit of Santon Retail Limited (company number: 03575203), Tesco Stores Limited (company number: 519500) and The Royal Bank of Scotland Limited (company number: SC 090312) (together, "the Beneficiaries"). We acknowledge and accept that the Beneficiaries each have an interest in the property and are relying on, and will be continuing to rely on, the report. We further acknowledge that the Beneficiaries may incur losses (including economic losses) as a result of any failure on our part in carrying out the report.

---

## List of Illustrations

- Figure 1      Site location plan  
Figure 2      Trench locations

## List of Plates

- Plate 1      Post excavation shot of Trench 1  
Plate 2      North facing section of Trench 3 showing dumped top-soil

## List of Appendices

- Appendix 1    Trench Descriptions  
Appendix 2    Photographic Record  
Appendix 3    *'Discovery and Excavation Scotland'* Report

## Abstract

---

This report presents the results of an archaeological evaluation undertaken in relation to a proposed commercial development at Polwarth Street, Galston, East Ayrshire.

The evaluation required an 8% trenching sample of the available development area. A total of 7 trenches of varying lengths and alignments were excavated totalling 760 m<sup>2</sup> (total basal dimensions).

Neither significant archaeological features nor artefacts were encountered.

## 1 INTRODUCTION

### 1.1 Background

1.1.1 AOC Archaeology Group was commissioned by Tesco Ltd. to undertake an archaeological evaluation of a proposed commercial development on land adjacent to Polwarth Street, Galston, East Ayrshire (Planning Ref: 08/0374/FL). The evaluation was undertaken in order to satisfy the requirements of the local planning authority, East Ayrshire Council who are advised on archaeological matters by West of Scotland Archaeology Service (WOSAS). The works were conducted according to the terms of a *Written Scheme of Investigation* (AOC 2013) in accordance with the policies outlined in *Scottish Planning Policy* (Scottish Government 2010) and *PAN 2/2011 Planning and Archaeology* (Scottish Government 2011).

### 1.2 Location

1.2.1 The proposed development area lies to the immediate north of Galston, and presently comprises open farmland (centred NGR NS 50221 36884). The development area is irregular in plan with the A7 forming the northern boundary and the A719 forming the western boundary of the site with a large roundabout to its north-western extent. To the south is the River Irvine, with Galston Bridge to the south-west.

### 1.3 Archaeological Background

1.3.1 The RCAHMS and the local Sites and Monuments Records do not list any archaeological sites within the development area. However, the potential of identifying previously unknown buried archaeological features exists.

1.3.2 A settlement has been known to exist at Galston since at least 1307, when it was garrisoned by Robert Bruce (Smith 2001). However, there is no evidence to suggest the town became a burgh of barony and remained relatively small in plan. No maps show any early development on the site in the 18<sup>th</sup> century and by the mid-19<sup>th</sup> century, the 1860 Ordnance Survey map shows the area to be free of development. The site continues to be undeveloped throughout the late 19<sup>th</sup> and mid-20<sup>th</sup> century, as can be seen on the 1947 map.

## 2 OBJECTIVES

2.1 The objectives of the archaeological evaluation were:

- i) to determine and assess the character, extent, condition, quality, date and significance of any buried archaeological remains within the proposed development area through evaluation trenching;
- ii) to advise and implement an appropriate form of mitigation, such as excavation, post-excavation analyses and publication, given the infeasibility of preserving the archaeological material *in situ*, should significant archaeological remains be encountered.

## 3 METHODOLOGY

3.1 The evaluation comprised machine trenching of an 8% sample of the available development area which equated to 1560 m<sup>2</sup>. However the presence of several live services including a gas main running across the site reduced the ground available for evaluation significantly. Subsequently, this



necessitated a reduction of trenching to 760 m<sup>2</sup>. The evaluation was undertaken by a 13 tonne tracked excavator with 2 m wide ditching bucket. Excavation was undertaken in shallow units/spits until the first significant archaeological horizon. All machine excavation was supervised by an experienced field archaeologist and according to AOC Archaeology Group's standard operating procedures, and as per the methodology within the *Written Scheme of Investigation* (AOC 2013).

## 4 RESULTS

- 4.1 The archaeological evaluation was undertaken on the 25<sup>th</sup> to 26<sup>th</sup> March 2013. Weather conditions were fair allowing for good archaeological visibility throughout the evaluation. In total, 380 m of linear trenching was opened varying in alignment and length (Figure 2).
- 4.2 The topsoil throughout the majority of the development area was light grey brown clay loam varying in depth from 0.30m to 0.50m. This in turn overlay a fine alluvial deposit of red-brown sandy silt in Trenches 1-5. Natural consisted of orange clays and sands and gravels. Evidence of dumped topsoil was observed within Trench 3 where topsoil reached 1.20 m in depth and contained demolition rubble. The depth of topsoil found across the site is perhaps related to the construction of the existing commercial buildings and car-park next to the evaluation area.



**Plate 1 - General shot of Trench 1**



**Plate 2 – East facing section of Trench 3 showing dumped topsoil**

- 4.3 No archaeological features or artefacts were encountered within any of the evaluation trenches.

## **5 CONCLUSION AND RECOMMENDATIONS**

- 5.1 From the trenches excavated within the development area, it has been demonstrated that the area is archaeologically sterile with no archaeological features or artefacts revealed throughout the evaluation.
- 5.3 No further archaeological works are deemed necessary within the development area. These recommendations will have to be approved by WoSAS on behalf of East Ayrshire Council.

## **6 REFERENCES**

AOC Archaeology 2013 *Polwarth Street, Galston, East Ayrshire: Evaluation Written Scheme of Investigation* Unpublished AOC project design

Scottish Government 2010 *Scottish Planning Policy*, February 2010

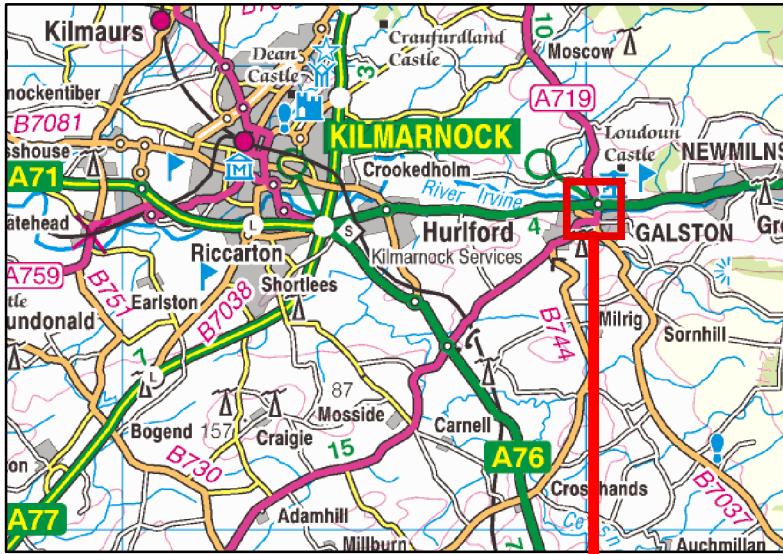
Scottish Government 2011 *Planning And Archaeology 2/2011*

Smith, R 2001 *The Making of Scotland: A Comprehensive Guide to the Growth of Scotland's Cities, Towns and Villages*. Canongate

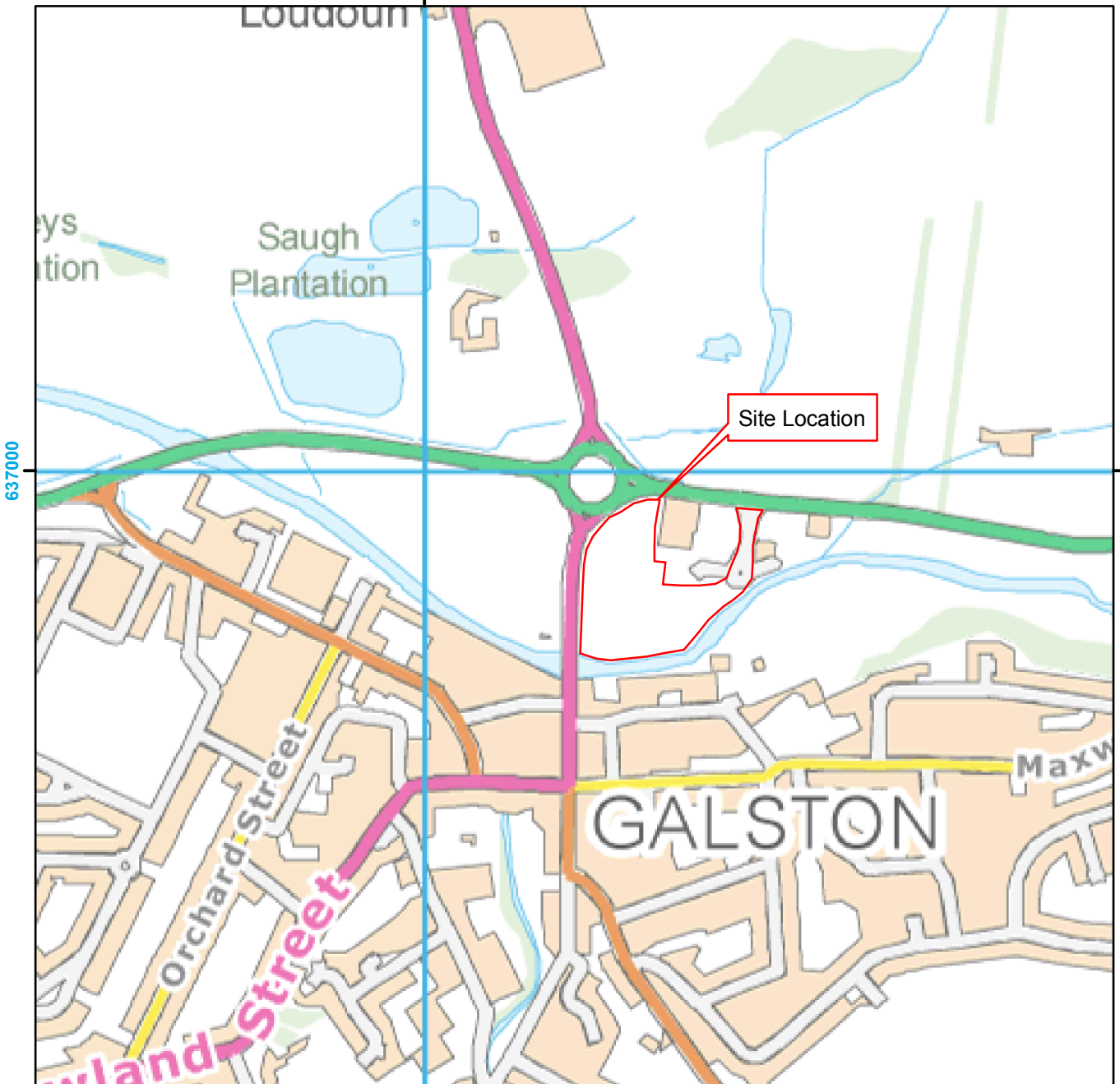


# **Polwarth Street, Galston, East Ayrshire: Archaeological Evaluation Data Structure Report**

## **Section 2: Appendices**



250000



637000

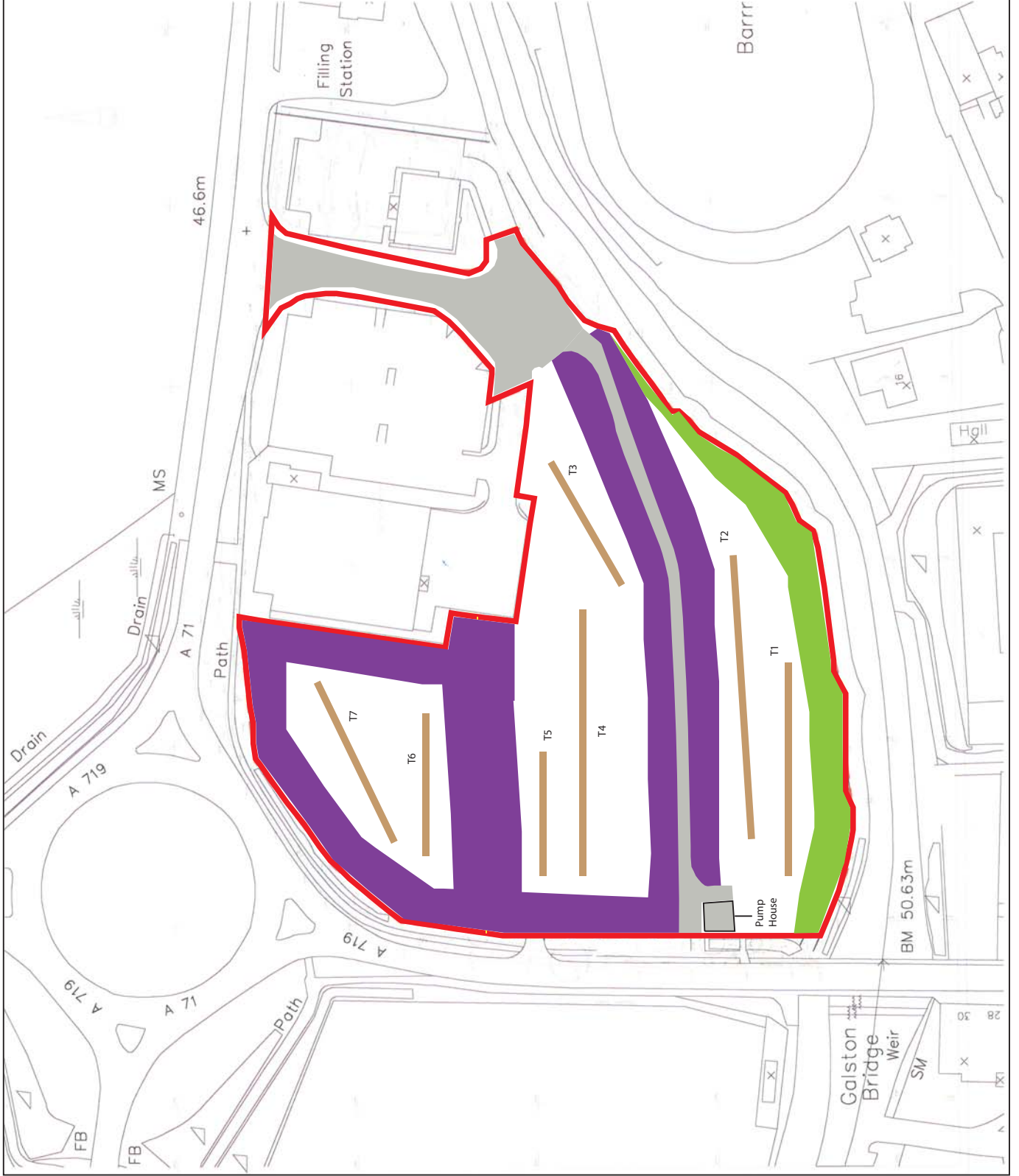
637000

250000



0 75 150 225 300 Meters

Figure 1: Site Location Plan



- Service Buffers
- Tarmac Areas
- Tree-lined River bank
- Site Boundary
- Evaluation Trench



Figure 2 - Evaluation Trench Locations

## APPENDIX 1: Trench Descriptions

### Trench 1

<i>Dimensions</i>	60 m by 2 m
<i>Excavated Orientation</i>	N to S
<i>Soil Make-up</i>	Topsoil – grey brown loam– max depth 0.5 m overlying fine red brown alluvial silt - max depth 0.50 m
<i>Depth of Excavation</i>	1.0 m
<i>Significant Features</i>	None
<i>Other Features</i>	None
<i>Natural Subsoil</i>	Red brown clay changing to gravel at 52.0 m
<i>Finds</i>	None

### Trench 2

<i>Dimensions</i>	80 m by 2 m
<i>Excavated Orientation</i>	S to N
<i>Soil Make-up</i>	Topsoil – grey brown loam– max depth 0.5 m overlying fine red brown alluvial silt - max depth 0.40 m
<i>Depth of Excavation</i>	0.90 m
<i>Significant Features</i>	None
<i>Other Features</i>	None
<i>Natural Subsoil</i>	Red brown clay changing to gravel at 40.0 m
<i>Finds</i>	None

### Trench 3

<i>Dimensions</i>	40 m by 2 m
<i>Excavated Orientation</i>	SSE to NNW
<i>Soil Make-up</i>	Topsoil – grey brown loam– max depth 0.50 m - 1.20 m overlying fine red brown alluvial silt - max depth 0.50 m
<i>Depth of Excavation</i>	1.70 m
<i>Significant Features</i>	None
<i>Other Features</i>	None
<i>Natural Subsoil</i>	Red brown clays and gravels
<i>Finds</i>	None

### Trench 4

<i>Dimensions</i>	75 m by 2 m
<i>Excavated Orientation</i>	S to N
<i>Soil Make-up</i>	Topsoil – grey brown loam– max depth 0.3 m overlying fine red brown alluvial silt - max depth 0.50 m
<i>Depth of Excavation</i>	0.90 m
<i>Significant Features</i>	None
<i>Other Features</i>	None
<i>Natural Subsoil</i>	Orange clay
<i>Finds</i>	None

### Trench 5

<i>Dimensions</i>	35 m by 2 m
<i>Excavated Orientation</i>	S to N
<i>Soil Make-up</i>	Topsoil – grey brown loam– max depth 0.3 m – 0.50 m overlying fine red brown alluvial silt - max depth 0.30 m
<i>Depth of Excavation</i>	0.80 m
<i>Significant Features</i>	None
<i>Other Features</i>	None

*Natural Subsoil* Gravel to 13.0 m then orange clay  
*Finds* None

**Trench 6**

*Dimensions* 40 m by 2 m  
*Excavated Orientation* N to S  
*Soil Make-up* Topsoil – grey brown loam– max depth 0.4 m  
*Depth of Excavation* 0.60 m  
*Significant Features* None  
*Other Features* None  
*Natural Subsoil* Gravel to 21.0 m then orange clay  
*Finds* None

**Trench 7**

*Dimensions* 50 m by 2 m  
*Excavated Orientation* NW to SE  
*Soil Make-up* Topsoil – grey brown loam– max depth 0.3 m  
*Depth of Excavation* 0.60 m  
*Significant Features* None  
*Other Features* Rubble drain at 40.0 m (E-W)  
*Natural Subsoil* Orange clay  
*Finds* None

**APPENDIX 3: Photographic Record**

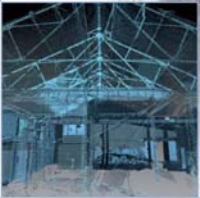
## Digital Photographs

Frame	Description	From	Date
1	Registration shot		25/3/13
2	Trench 1 post-excavation	S	25/3/13
4	Trench 2 post-excavation	N	25/3/13
5	Trench 3 post-excavation	NNW	25/3/13
6	Trench 4 post-excavation	N	25/3/13
7	Trench 5 post-excavation	N	25/3/13
8	Trench 6 post-excavation	S	25/3/13
9	Trench 7 post-excavation	SE	25/3/13



**APPENDIX 3: 'Discovery and Excavation in Scotland' Report**

<b>LOCAL AUTHORITY:</b>	East Ayrshire Council
<b>PROJECT TITLE/SITE NAME</b>	Polwarth Street, Galston, east Ayrshire
<b>PROJECT CODE:</b>	AOC 21978
<b>PARISH:</b>	Galston
<b>NAME OF CONTRIBUTOR:</b>	Kevin Paton
<b>NAME OF ORGANISATION:</b>	AOC Archaeology Group
<b>TYPE(S) OF PROJECT:</b>	Archaeological Evaluation
<b>NMRS NO(S)</b>	None
<b>SITE/MONUMENT TYPE(S):</b>	N/A
<b>SIGNIFICANT FINDS:</b>	N/A
<b>NGR (2 letters, 6 figures)</b>	NS 50221 36884
<b>START DATE</b> (this season)	25 <sup>th</sup> March 2013
<b>END DATE</b> (this season)	26 <sup>th</sup> March 2013
<b>PREVIOUS WORK</b> (incl. DES ref.)	None
<b>MAIN (NARRATIVE) DESCRIPTION:</b> (May include information from other fields)	<p>An archaeological evaluation was undertaken in relation to a proposed commercial development at Polwarth Street, Galston, East Ayrshire,</p> <p>The evaluation required an 8% trenching sample of the available development area. A total of 7 trenches of varying lengths and alignments were excavated totalling 760 m<sup>2</sup> (total basal dimensions).</p> <p>Neither significant archaeological features nor artefacts were encountered.</p>
<b>PROPOSED FUTURE WORK:</b>	None
<b>CAPTION(S) FOR ILLUSTRS:</b>	---
<b>SPONSOR OR FUNDING BODY:</b>	Tesco Ltd.
<b>ADDRESS OF MAIN CONTRIBUTOR:</b>	Edgefield Road Industrial Estate, Loanhead, Midlothian, EH20 9SY
<b>EMAIL ADDRESS:</b>	Kevin.paton@aocarchaeology.com
<b>ARCHIVE LOCATION</b> (intended/deposited)	Archive to be deposited in NMRS



**AOC Archaeology Group**, Edgefield Industrial Estate, Edgefield Road, Loanhead EH20 9SY  
tel: 0131 440 3593 | fax: 0131 440 3422 | e-mail: [admin@aocarchaeology.com](mailto:admin@aocarchaeology.com)

[www.aocarchaeology.com](http://www.aocarchaeology.com)