

# Jacksbank Farm Windfarm, Glenbervie, nr Stonehaven: Archaeological Watching Brief Data Structure Report

AOC Project 22153

31<sup>st</sup> August 2013



ARCHAEOLOGY

HERITAGE

CONSERVATION

## Jacksbank Farm Windfarm, Glenberrie, nr Stonehaven

### Archaeological Watching Brief Data Structure Report

On Behalf of:	The Greenspan Agency 151 West George Street Glasgow G2 2JJ
National Grid Reference (NGR):	Point of access road to N: NO 77938 83146 East extent of site: NO 77665 82613 West extent of site: NO 7705782894
AOC Project No:	22153
OASIS No:	157864
Prepared by:	Diana Sproat
Illustration by:	Diana Sproat
Date of Fieldwork:	5 <sup>th</sup> August – 16 <sup>th</sup> August 2013
Date of Report:	31 <sup>st</sup> August 2013

This document has been prepared in accordance with AOC standard operating procedures.

Author: Diana Sproat	Date: 31 <sup>st</sup> August 2013
Approved by: Lindsay Dunbar	Date: 31 <sup>st</sup> August 2013
Draft/Final Report Stage: Draft	Date: 31 <sup>st</sup> August 2013

**Enquiries to:** AOC Archaeology Group  
Edgefield Industrial Estate  
Edgefield Road  
Loanhead  
EH20 9SY

Tel. 0131 440 3593  
Fax. 0131 440 3422  
e-mail. [admin@aocarchaeology.com](mailto:admin@aocarchaeology.com)



## Contents

	Page
List of illustrations .....	3
List of plates .....	3
List of appendices .....	3
Summary .....	4
<b>1 INTRODUCTION .....</b>	<b>5</b>
1.1 Background .....	5
1.2 Site Location .....	5
1.3 Archaeological background .....	5
<b>2 OBJECTIVES.....</b>	<b>5</b>
<b>3 METHODOLOGY .....</b>	<b>5</b>
<b>4 RESULTS.....</b>	<b>6</b>
<b>5 CONCLUSIONS .....</b>	<b>6</b>
<b>6 REFERENCES.....</b>	<b>7</b>

---

### **List of illustrations**

Figure 1 : Site Location map

Figure 2: Site plan showing extent of area subject to watching brief

### **List of plates**

Plate 1: General view of stripped access road

Plate 2: General view of stripped area of WTG1 showing extensive plough-marks

### **List of appendices**

Appendix 1: Colour Digital Photographic Record

Appendix 2: Discovery and Excavation in Scotland (DES) Report

## Summary

---

*AOC Archaeology Groups was commissioned by the Greenspan Agency to undertake an archaeological watching brief on the topsoil strip for the three wind turbines and their access roads at Jacksbank Farm to the north of the village of Glenbervie near Stonehaven, Aberdeenshire.*

*No significant features or artefacts were revealed during the archaeological works.*

## 1 INTRODUCTION

### 1.1 Background

1.1.1 AOC Archaeology Group was commissioned by the Greenspan Agency to undertake an archaeological watching brief on the topsoil strip for three wind turbines and their access roads at Jacksbank Farm to the north of the village of Glenbervie near Stonehaven, Aberdeenshire. The works were undertaken in order to satisfy a condition set by the Aberdeenshire Council as advised on archaeological matters by the Aberdeenshire Council Archaeology Service (ACAS). The works were conducted according to the terms of an *Written Scheme of Investigation* approved by ACAS and in accordance with the principles set out in *Scottish Planning Policy* (Scottish Government 2010) and *PAN 2/2011 Planning & Archaeology* (Scottish Government 2011).

### 1.2 Site Location

1.2.1 The area subject to watching brief was located to the south-east of Jacksbank Farm to the north of the villages of Glenbervie and Drumlithie in open fields and is centred between NGR: NO 77938 831146, NO 77665 82613 and NO 77057 82894 (Figure 1).

### 1.3 Archaeological background

1.3.1 There are no known archaeological sites within the development boundaries. However, whilst no known archaeological sites are under direct threat from the development there are a number of sites that lie within a few hundred metres of the trackway and turbines. These include Jacksbank field systems and clearance cairns (NMRS No. NO78SE 22) which is described as roughly rectilinear fields which are bounded by stony banks 2m in thickness and up to 0.40m in height, measuring at least 60m by 30m, although only one is complete (measuring 32m by 27m). The cairns (at least twenty-five) are up to 5m in diameter and 0.40m in height. Also from Jacksbank Farm itself there are records for the recovery of two Bronze Age swords from a newly cut farm drain, found in the 1880s (NMRS No. NO78SE 1) and a Bronze Age tanged and barbed arrowhead found in the 1870s (NMRS No. NO78SE 5).

## 2 OBJECTIVES

2.1 The objectives of the watching brief were:

- i) to monitor the topsoil strip of the proposed turbine areas, sub-stations and access roads to prevent the destruction of significant archaeological features prior to their recording;
- ii) given the discovery of significant archaeological material in quantity that will suffer an adverse impact from the development (ie, where preservation *in situ* is impractical), the recording of all archaeological features by means of a mitigation strategy to be formulated with ACAS.

## 3 METHODOLOGY

3.1 Topsoil stripping was conducted by a large 360° excavator with a bladed ditching bucket. All excavation was monitored by an experienced field archaeologist and all recording was carried out according to AOC Archaeology Group's standard practices.

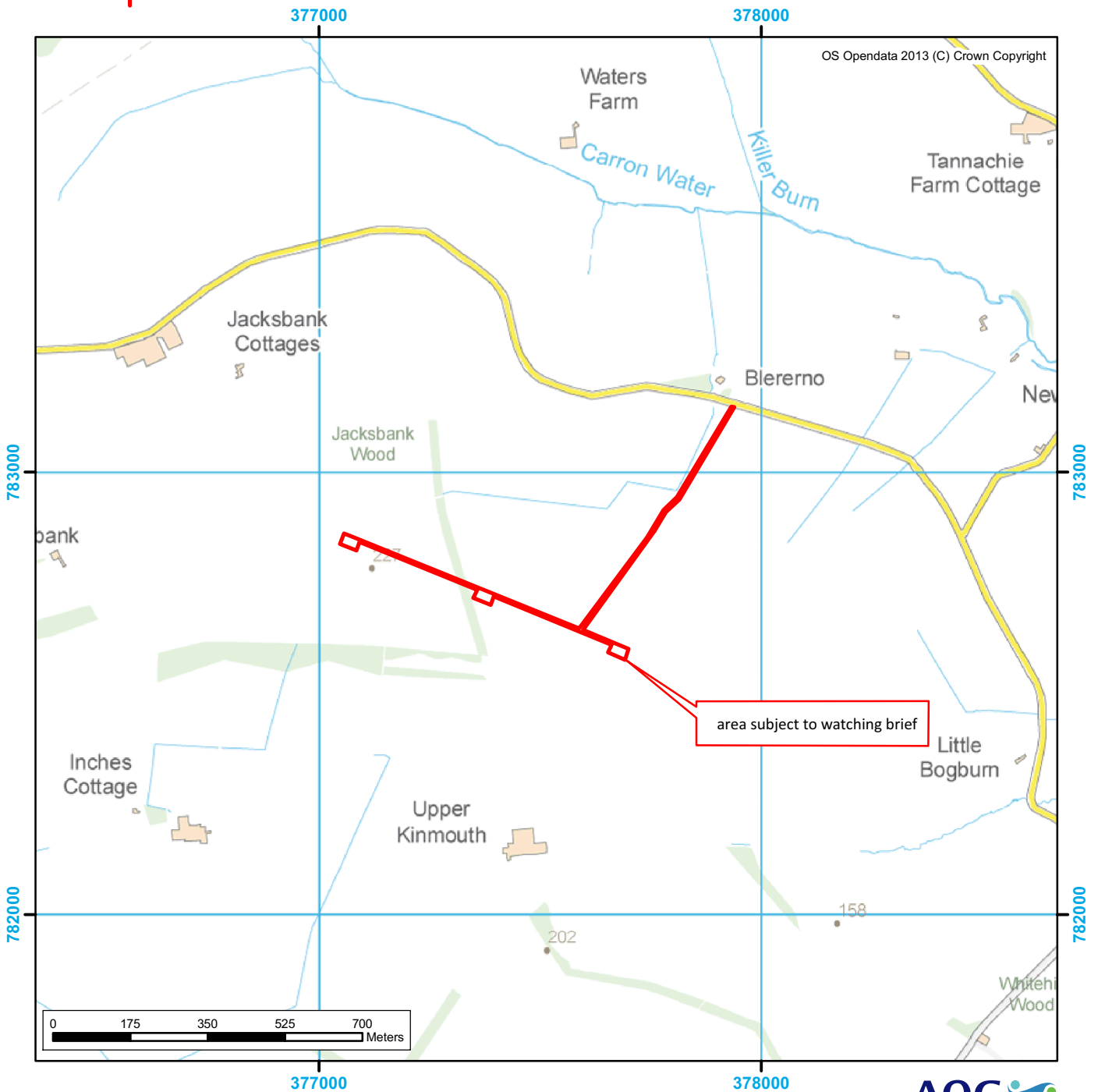
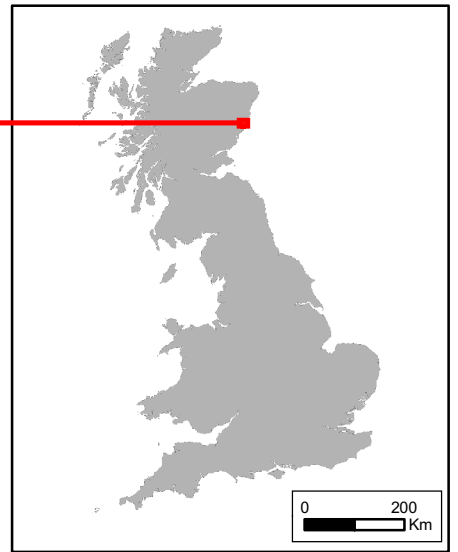
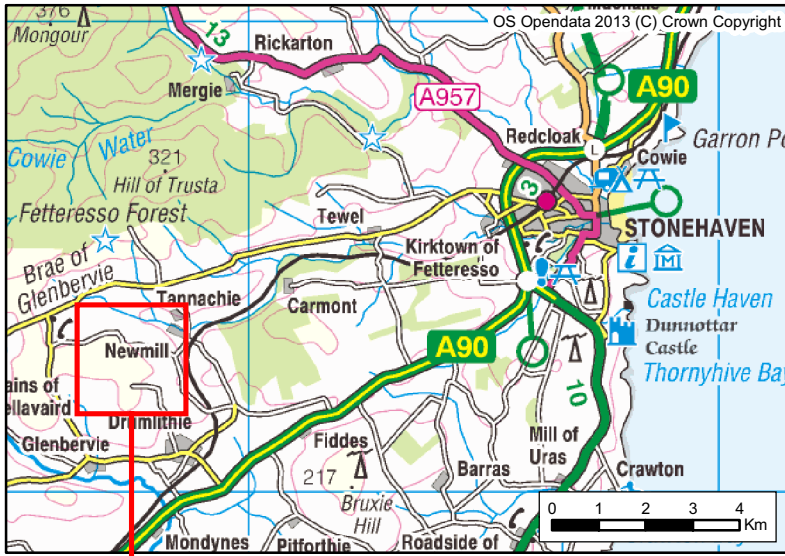


Figure 1: Site location plan

## 4 RESULTS

- 4.1 The area watched as part of this programme of works can be found in [Figure 1](#). Being in such an exposed area on top of a hill, the topsoil was fairly thin in depth, between 100 – 200mm in depth. This overlay a natural orange clay subsoil throughout the watched area, a general homogenous sandy silt with occasional – moderate stone inclusions, some large rounded stone boulders and stony patches in general ([Plate 1](#)).
- 4.2 In the excavations in the western field, which included part of an access road and the strip for turbine WTG1, there was a heavy concentration of ploughmarks approximately 200mm in width and 450mm apart ([Plate 2](#)).



Plate 1: General view of strip of the initial haul road, from the north



Plate 2: General view of completed strip of WGT3, general view of completed strip from the south-west, showing the deep plough marks

## 5 CONCLUSIONS

- 5.1 No significant archaeological features or artefacts were revealed during the monitored topsoil strip. No further archaeological works are considered necessary within the development area. This recommendation will require confirmation by the Aberdeenshire Council.



## 6 REFERENCES

McWilliam, C 2003 *The Buildings of Scotland: Lothians (Except Edinburgh)*. Penguin: Edinburgh

Scottish Government 2010 *Scottish Planning Policy*.

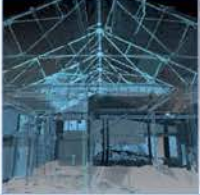
Scottish Government 2011 *PAN 2/2011 Planning & Archaeology*.

## APPENDIX 1: COLOUR DIGITAL PHOTOGRAPHIC REGISTER

Ref No	Description	From	Date
1	Looking at the stripped haul road	N	05/08/2013
2	Plough Scars in the subsoil on the haul road	S	05/08/2013
3	Strip of the haul road complete in Field 1	S	05/08/2013
4	Shrubs removed in the upper field on the haul road	N	05/08/2013
5	Strip of the haul road complete in the upper field	S	05/08/2013
6	Completed strip of WGT2	NE	15/08/2013
7	General view of access road between WGT3 & WGT2	W	16/08/2013
8	General view of the completed strip on WGT3 showing the deep plough marks	SW	16/08/2013

## APPENDIX 2: DISCOVERY AND EXCAVATION IN SCOTLAND (DES) REPORT

<b>LOCAL AUTHORITY:</b>	Aberdeenshire Council
<b>PROJECT TITLE/SITE NAME</b>	Jacksbank Farm
<b>PROJECT CODE:</b>	AOC 22153
<b>PARISH:</b>	Glenbervie
<b>NAME OF CONTRIBUTOR:</b>	Diana Sproat
<b>NAME OF ORGANISATION:</b>	AOC Archaeology Group
<b>TYPE(S) OF PROJECT:</b>	Monitored Topsoil Strip
<b>NMRS NO(S)</b>	N/A
<b>SITE/MONUMENT TYPE(S):</b>	None
<b>SIGNIFICANT FINDS:</b>	None
<b>NGR (2 letters, 6 figures)</b>	NO 77665 82613
<b>START DATE (this season)</b>	5 <sup>th</sup> August 2013
<b>END DATE (this season)</b>	16 <sup>th</sup> August 2013
<b>PREVIOUS WORK (incl. DES ref.)</b>	None
<b>MAIN DESCRIPTION:</b> (May include information from other fields)	<p>(NARRATIVE)</p> <p>AOC Archaeology Groups was commissioned by the Greenspan Agency to undertake an archaeological watching brief on the topsoil strip for the three wind turbines and their access roads at Jacksbank Farm to the north of the village of Glenbervie near Stonehaven, Aberdeenshire.</p> <p>No significant features or artefacts were revealed during the archaeological works.</p>
<b>PROPOSED FUTURE WORK:</b>	None
<b>CAPTION(S) FOR ILLUSTRS:</b>	N/A
<b>SPONSOR OR FUNDING BODY:</b>	The Greenspan Agency
<b>ADDRESS OF MAIN CONTRIBUTOR:</b>	Edgefield Road Industrial Estate, Loanhead, Midlothian, EH20 9SY
<b>EMAIL ADDRESS:</b>	admin@aocarchaeology.com
<b>ARCHIVE LOCATION</b> (intended/deposited)	Archive to be deposited in NMRS



**AOC Archaeology Group**, Edgefield Industrial Estate, Edgefield Road, Loanhead EH20 9SY  
tel: 0131 440 3593 | fax: 0131 440 3422 | e-mail: [admin@aocarchaeology.com](mailto:admin@aocarchaeology.com)

[www.aocarchaeology.com](http://www.aocarchaeology.com)