

# Ravenscroft Gardens, Edinburgh: Archaeological Evaluation Data Structure Report

AOC Project 22569

15<sup>th</sup> October 2013  
aocarcha1 - 161235



ARCHAEOLOGY

| HERITAGE

| CONSERVATION

# Ravenscroft Gardens, Edinburgh

## Archaeological Evaluation Data Structure Report

---

**On Behalf of:** Jim Ryce

**National Grid Reference (NGR):** NT29305 68433

**AOC Project No:** 22569

**Prepared by:** Nicholas Johnstone

**Illustration by:** Kevin Paton

**Date of Fieldwork:** 14th October 2013

**Date of Report:** 15th October 2013

This document has been prepared in accordance with AOC standard operating procedures.

**Author:** Nicholas Johnstone **Date:** 15<sup>th</sup> October 2013

**Approved by:** Martin Cook **Date:** 15<sup>th</sup> October 2013

**Draft/Final Report Stage:** **Date:** 15<sup>th</sup> October 2013

**Enquiries to:** AOC Archaeology Group  
Edgefield Industrial Estate  
Edgefield Road  
Loanhead  
EH20 9SY

Tel. 0131 440 3593  
Fax. 0131 440 3422  
e-mail. [admin@aocarchaeology.com](mailto:admin@aocarchaeology.com)



## Contents

	<b>Page</b>
List of plates .....	3
List of appendices .....	3
Abstract.....	4
<b>1 INTRODUCTION .....</b>	<b>5</b>
1.1 Background .....	5
1.2 Location.....	5
1.3 Historical background.....	5
<b>2 OBJECTIVES .....</b>	<b>5</b>
<b>3 METHODOLOGY .....</b>	<b>5</b>
<b>4 RESULTS .....</b>	<b>6</b>
<b>5 CONCLUSION AND RECOMMENDATIONS.....</b>	<b>7</b>
<b>6 BIBLIOGRAPHY .....</b>	<b>7</b>
<b>APPENDIX 1: Trench Descriptions .....</b>	<b>9</b>
<b>APPENDIX 2: Photographic Record .....</b>	<b>9</b>
<b>APPENDIX 3: ‘Discovery and Excavation in Scotland’ Report.....</b>	<b>10</b>

## List of plates

Plate 1	Trench 1 showing depth of modern made ground
Plate 2	Trench 3 showing natural subsoil at south east of site

## List of appendices

Appendix 1	Trench Descriptions
Appendix 2	Photographic Record
Appendix 3	' <i>Discovery and Excavation in Scotland</i> ' Report

## Abstract

---

This report presents the results of an archaeological evaluation undertaken during the development of an empty plot of unkempt grassland between houses 13 and 23 Ravenscroft Gardens, Edinburgh.

The evaluation required a 10% trenching sample throughout the development area, consisting of trenching with combined basal dimensions of 36m<sup>2</sup>.

Neither significant archaeological features nor artefacts were encountered.

## 1 INTRODUCTION

### 1.1 Background

- 1.1.1 AOC Archaeology Group was commissioned by Jim Ryce to undertake an archaeological evaluation during the development of a plot of unkempt grassland on Ravenscroft Gardens, Edinburgh. The evaluation was undertaken in order to satisfy the requirements of the local planning authority, Edinburgh City Council who are advised on archaeological matters by the City of Edinburgh Council Archaeology Service (CECAS). The works were conducted according to the terms of a *Written Scheme of Investigation* (AOC 2012) approved on behalf of Edinburgh City Council by CECAS and in accordance with the principles set out in *Scottish Planning Policy* (Scottish Government 2010) and *PAN 2/2011 Planning & Archaeology* (Scottish Government 2011).
- 1.1.2 Due to a misunderstanding caused by the change in ownership of the land, the site was prematurely stripped of the top 0.5m to 0.8m of topsoil before archaeological investigation was begun.

### 1.2 Location

- 1.2.1 The site is located in an area of unkempt grassland located approximately 40m into Ravenscroft Gardens, between houses 13 (to the north west) and 23 (to the south west). To the north east of the site is a dwelling house, 35 Limefeild, and to the south east is an agricultural field designated as Green Belt.

### 1.3 Historical background

- 1.3.1 A brief survey of the RCAHMS records no monuments in this location. However, the site is located within close proximity to the Medieval core of Golmerton and as such the possibility of identifying significant remains existed.

## 2 OBJECTIVES

- 2.1 The objectives of the archaeological evaluation were:
- i) to determine and assess the character, extent, condition, quality, date and significance of any buried archaeological remains within the proposed development area;
  - ii) to advise and implement an appropriate form of mitigation, such as excavation, post-excavation analyses and publication given the infeasibility of preserving the archaeological material *in situ*, should significant archaeological remains be encountered.

## 3 METHODOLOGY

- 3.1 The evaluation comprised machine trenching of a 10% sample within the development area that was approximately 360m<sup>2</sup>. Total trenching consisted of 36m<sup>2</sup> (total basal trench dimensions). Three Trenches were excavated two at 4m long and one at 10m long, all were 2m wide. The trenches were laid out to across the site to give maximum coverage of the development area.
- 3.2 The evaluation was undertaken by a 30 tonne excavator with a 2m wide bladed ditching bucket. Excavation was undertaken in units/spits through demolition material until the first significant archaeological horizon or natural subsoil was reached. All machine excavation was supervised by an experienced field archaeologist and according to AOC Archaeology Group's standard operating

procedures, and as per the methodology within the *Written Scheme of Investigation* (AOC 2012). The trenches were backfilled immediately after completion of the recording required.

## 4 RESULTS

- 4.1 The archaeological evaluation was undertaken on the 14th of October 2013. Weather conditions were dry and archaeological visibility was good throughout the evaluation. Upon arriving at site the topsoil had already been stripped to a depth of 0.5m across site exposing made ground across the whole area. In total 36 m of trenching was opened in three staggered trenches orientated from the north west to the south east.



Plate 1: Trench 1 showing depth of modern made ground

- 4.2 Throughout most of the site it was evident that modern quarrying and subsequent deposition of construction debris had removed all potential archaeological deposits. The trenches excavated at the north west end of site were excavated to a depth of 4m through modern made ground (comprising of mostly of building demolition material) and natural subsoils were not reached before the limit of safe excavation was reached (plate 1). To the south east of the site a natural subsoil of pale grey and yellow/orange sandy clay was discovered at 10m into the site from the south east site boundary (plate 2). A clear line could be distinguished where this material had been cut into for quarrying out material. Above the natural material any other potential archaeological deposits had been removed and built over with made ground.



Plate 2: Trench 3 showing natural subsoil at south east of site

## 5 CONCLUSION AND RECOMMENDATIONS

- 5.1 No significant archaeological remains or artefacts were identified during the evaluation. It was discovered that the area has previously been quarried for building material to a significant depth, removing any possibility of any surviving archaeology. Currently the site is mostly covered by a dump of made ground to a significant depth of more than 4m. The significant balance of probability is that the site is free of archaeological material. No further archaeological works are considered necessary. This recommendation will require confirmation by the City of Edinburgh Council Archaeology Service (CECAS) on behalf of Edinburgh City Council.

## 6 BIBLIOGRAPHY

Scottish Government 2010 *Scottish Planning Policy*, February 2010.

Scottish Government 2011 *Planning And Archaeology 2/2011*.



# **Ravenscroft Gardens, Edinburgh: Archaeological Evaluation Data Structure Report**

## **Section 2: Appendices**

## APPENDIX 1: Trench Descriptions

### Trench 1

<i>Dimensions</i>	4 m by 2 m
<i>Total Area</i>	8 m <sup>2</sup>
<i>Orientation</i>	NW-SE
<i>Depth of Made Ground</i>	4 m (crushed stone, building demolition material, modern rubbish, and re-deposited natural)
<i>Depth of Excavation</i>	3.2m (around 4m depth from the surface, as topsoil was already removed)
<i>Significant Features</i>	None
<i>Other Features</i>	None
<i>Subsoil</i>	Not reached, excavations below 4m were impractical
<i>Finds</i>	None

### Trench 2

<i>Dimensions</i>	4 m by 2 m
<i>Total Area</i>	8 m <sup>2</sup>
<i>Orientation</i>	NW-SE
<i>Depth of Made Ground</i>	4 m (crushed stone, building demolition material, modern rubbish, and re-deposited natural)
<i>Depth of Excavation</i>	3.2m (around 4m depth from the surface, as topsoil was already removed)
<i>Significant Features</i>	None
<i>Other Features</i>	None
<i>Subsoil</i>	Not reached, excavations below 4m were impractical
<i>Finds</i>	None

### Trench 3

<i>Dimensions</i>	10 m by 2 m
<i>Total Area</i>	20 m <sup>2</sup>
<i>Orientation</i>	NW-SE
<i>Depth of Made Ground</i>	1.4 m (crushed stone, building demolition material, modern rubbish, and re-deposited natural)
<i>Depth of Excavation</i>	1.4m
<i>Significant Features</i>	None
<i>Other Features</i>	Cut through natural for quarrying of material visible at 10m in from the limit of the site
<i>Subsoil</i>	Pale grey and yellow/orange sandy clay
<i>Finds</i>	None

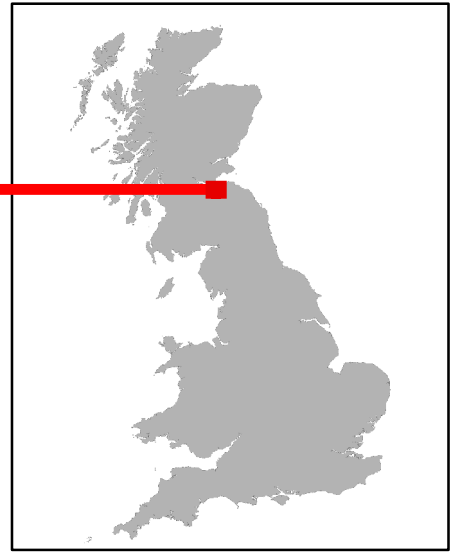
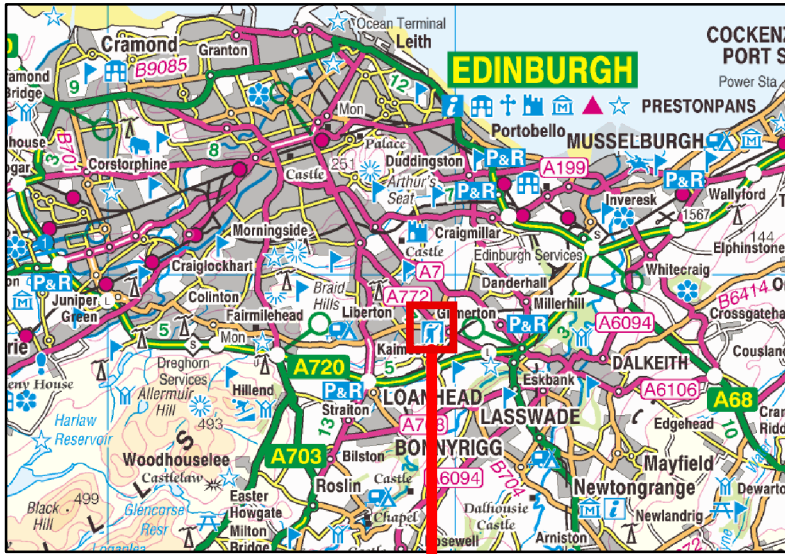
## APPENDIX 2: Photographic Record

Digital Photographs

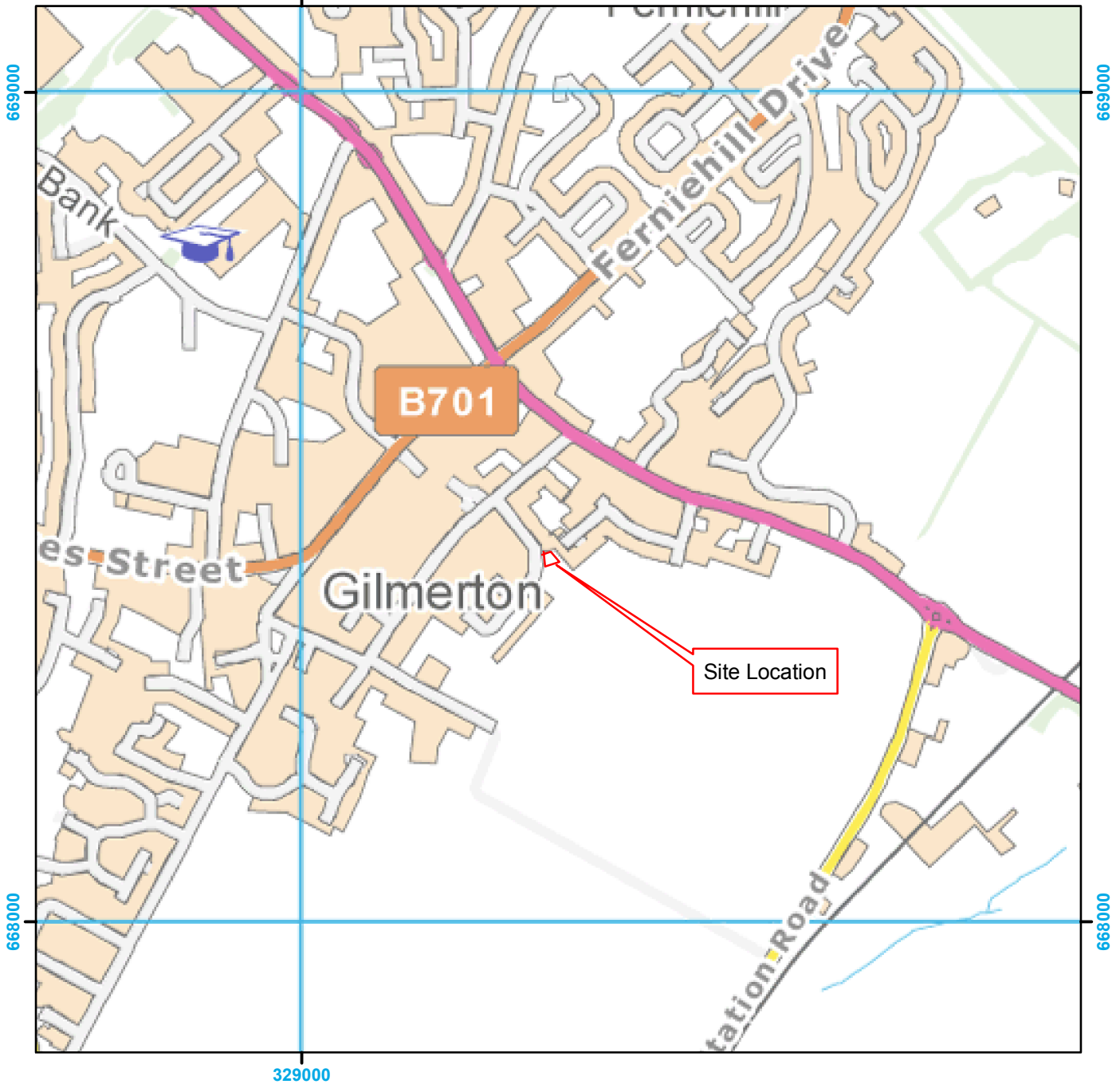
Frame	Description	From	Date
1	Registration	-	14/10/13
2	Trench 1	NE	14/10/13
3	Trench 2	NE	14/10/13
4	Trench 3	NE	14/10/13
5	General view of site	S	14/10/13

**APPENDIX 3: 'Discovery and Excavation in Scotland' Report**

<b>LOCAL AUTHORITY:</b>	Edinburgh City Council
<b>PROJECT TITLE/SITE NAME</b>	Ravenscroft Gardens, Edinburgh
<b>PROJECT CODE:</b>	AOC 22569
<b>PARISH:</b>	Edinburgh
<b>NAME OF CONTRIBUTOR:</b>	Nicholas Johnstone
<b>NAME OF ORGANISATION:</b>	AOC Archaeology Group
<b>TYPE(S) OF PROJECT:</b>	Archaeological Evaluation
<b>NMRS NO(S)</b>	None
<b>SITE/MONUMENT TYPE(S):</b>	N/A
<b>SIGNIFICANT FINDS:</b>	N/A
<b>NGR (2 letters, 6 figures)</b>	NT 26339 73115
<b>START DATE</b> (this season)	14 <sup>th</sup> October 2013
<b>END DATE</b> (this season)	15 <sup>th</sup> October 2013
<b>PREVIOUS WORK</b> (incl. DES ref.)	None
<b>MAIN (NARRATIVE) DESCRIPTION:</b> (May include information from other fields)	<p>An archaeological evaluation was undertaken during the development of an empty patch of unkempt land at Ravenscroft Gardens, Edinburgh.</p> <p>The area was subject to a 10% sample evaluation comprising combined basal dimensions of 36m<sup>2</sup>. The works revealed that the former truncation of the site by quarrying has removed any archaeological remains.</p> <p>Neither significant archaeological features nor artefacts were encountered.</p>
<b>PROPOSED FUTURE WORK:</b>	None
<b>CAPTION(S) FOR ILLUSTRS:</b>	---
<b>SPONSOR OR FUNDING BODY:</b>	Jim Ryce
<b>ADDRESS OF MAIN CONTRIBUTOR:</b>	Edgefield Road Industrial Estate, Loanhead, Midlothian, EH20 9SY
<b>EMAIL ADDRESS:</b>	admin@aocarchaeology.com
<b>ARCHIVE LOCATION</b> (intended/deposited)	Archive to be deposited in NMRS



329000



329000



0 80 160 240 320 Meters

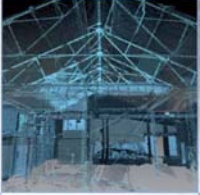
Figure 1: Site Location Plan



Evaluation Trench



DSR Figure 2 - Trench Location Plan



**AOC Archaeology Group**, Edgefield Industrial Estate, Edgefield Road, Loanhead EH20 9SY  
tel: 0131 440 3593 | fax: 0131 440 3422 | e-mail: [admin@aocarchaeology.com](mailto:admin@aocarchaeology.com)

[www.aocarchaeology.com](http://www.aocarchaeology.com)