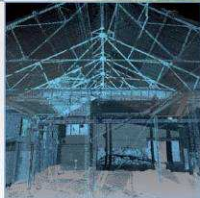
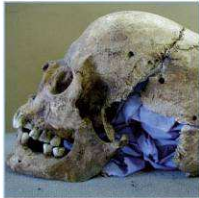
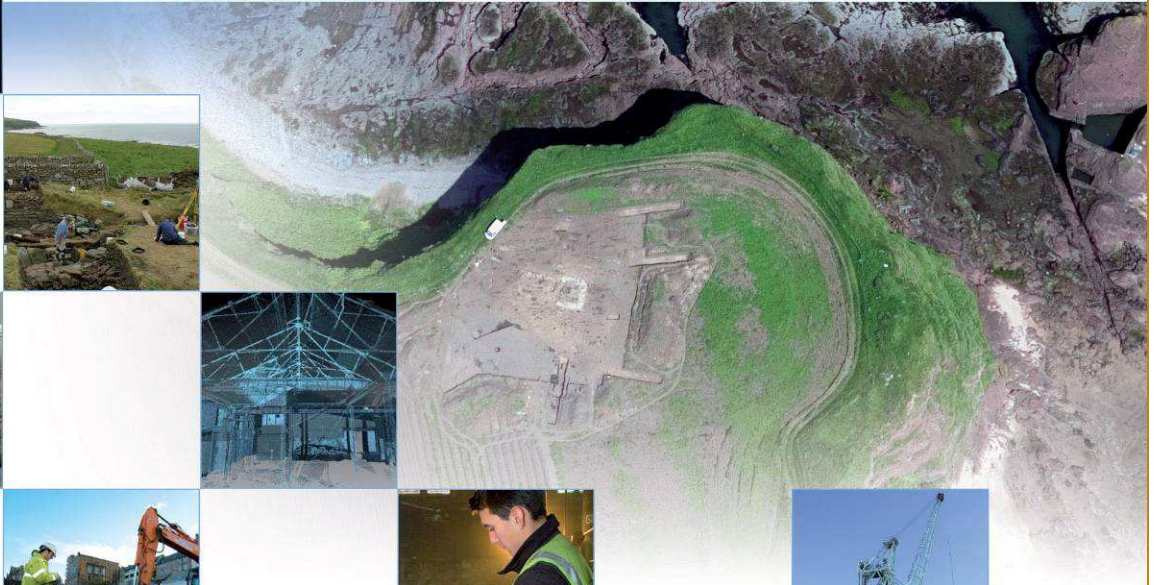


# Arc

# December 2013



**Friarsfield Road, Cults, Aberdeen:**  
**Archaeological Evaluation & Excavation**  
**Data Structure Report**

---

**On Behalf of:**      **Cala Homes (East) Ltd**  
Cairnlee House  
Callendar Business Park  
Callendar Road  
Falkirk  
FK1 1XE

**National Grid Reference (NGR):**      **NJ 8930 0362**

**AOC Project No:**      **22625**

**Prepared by:**      **Jamie Humble**

**Illustration by:**

**Date of Fieldwork:**      **10<sup>th</sup> – 18<sup>th</sup> December 2013**

**Date of Report:**

**This document has been prepared in accordance with AOC standard operating procedures.**

**Author:** Jamie Humble

**Date:**

**Approved by:**

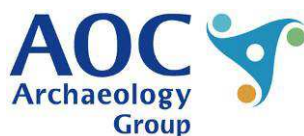
**Date:**

**Draft/Final Report Stage:**

**Date:**

**Enquiries to:** AOC Archaeology Group  
Edgefield Industrial Estate  
Edgefield Road  
Loanhead  
EH20 9SY

Tel.      0131 440 3593  
Fax.      0131 440 3422  
e-mail.    [edinburgh@aocarchaeology.com](mailto:edinburgh@aocarchaeology.com)



**[www.aocarchaeology.com](http://www.aocarchaeology.com)**

---

## Contents

	Page
List of Illustrations.....	2
List of Plates .....	2
List of Appendices .....	2
<b>1 INTRODUCTION.....</b>	<b>4</b>
1.1 Background .....	4
1.2 Site Location.....	4
<b>2 HISTORICAL BACKGROUND .....</b>	<b>4</b>
<b>3 OBJECTIVES.....</b>	<b>5</b>
<b>4 METHODOLOGY .....</b>	<b>5</b>
4.1 Archaeological evaluation .....	5
4.2 Archaeological excavation.....	5
<b>5 RESULTS.....</b>	<b>5</b>
5.1 Introduction .....	5
5.2 Evaluation .....	6
5.3 Excavation .....	7
<b>6 CONCLUSIONS AND RECOMMENDATIONS.....</b>	<b>9</b>
6.1 Evaluation .....	9
6.2 Excavation .....	9
<b>7 REFERENCES.....</b>	<b>10</b>
7.1 Bibliographic References.....	10
7.2 Cartographic References.....	10
<b>APPENDIX 1: EVALUATION TRENCH DESCRIPTIONS.....</b>	<b>12</b>
<b>APPENDIX 2: CONTEXT REGISTER.....</b>	<b>16</b>
<b>APPENDIX 3: PHOTOGRAPHIC REGISTER .....</b>	<b>18</b>
<b>APPENDIX 4: DRAWING REGISTER .....</b>	<b>20</b>
<b>APPENDIX 5: FINDS REGISTER.....</b>	<b>20</b>
<b>APPENDIX 6: SAMPLE REGISTER .....</b>	<b>20</b>
<b>APPENDIX 7: 'DISCOVERY AND EXCAVATION IN SCOTLAND' REPORT .....</b>	<b>21</b>

## List of Illustrations

Figure 1: Site Location

Figure 2: Plan of evaluation trenches

Figure 3: Plan of excavated features

## List of Plates

Plate 1: Extract from Ordnance Survey 1925 Aberdeenshire sheet 086.01.

Plate 2: Trench 6 post-excavation, from south-east.

Plate 3: Stone filled pit [027], from south.

Plate 4: Area of excavation, from north-east.

Plate 5: Pits [008, 010 & 012], from east.

Plate 6: Pit [024], from south-east.

## List of Appendices

Appendix 1: Evaluation Trench Descriptions

Appendix 2: Context Register

Appendix 3: Photographic Register

Appendix 4: Drawing Register

Appendix 5: Finds Register

Appendix 6: Samples Register

Appendix 7: *'Discovery and Excavation in Scotland'* Report

## ABSTRACT

---

*AOC Archaeology Group undertook an archaeological evaluation and excavation on behalf of Cala Homes (East) Ltd during residential development of land at Friarsfield Road, Cults, Aberdeen. Prior to any archaeological work development on-site had begun limiting the area available for archaeological investigation.*

*A total of 16 evaluation trenches with an area of 2318 m<sup>2</sup> were excavated in the 1.8 ha area that was unaffected by the development works representing more than the 10% sample required. The evaluation revealed a simple stratigraphic sequence of thin topsoil overlying sandy clay glacial till subsoil. No significant archaeological features were identified during the evaluation.*

*Archaeological features were identified in an area stripped of topsoil during the development works. This area was hand cleaned and series of small pits was revealed. No identifiable patterns or structures were apparent, however all the features were heavily truncated. No diagnostic dating material was recovered from the excavation.*

## 1 INTRODUCTION

## 1.1 Background

- 1.1.1 An archaeological evaluation and excavation were required by Cala Homes (East) Ltd during residential development (Planning Ref P120340) of land at Friarsfield Road, Cults, Aberdeen. The scope of the works was determined by the Aberdeen City Council who are advised on archaeological matters by Judith Stones, Keeper of Archaeology. The works were conducted according to the terms of a *Written Scheme of Investigation* (AOC 2013) approved on behalf of Aberdeen City Council by Judith Stones and in accordance with *Scottish Planning Policy* (Scottish Government 2010) and *PAN 2/2011 Planning And Archaeology* (Scottish Government 2011).
- 1.1.2 The development area is centred at approximately on Grid Ref NJ 8930 0362 (Figure 1) and comprises a total area of approximately 7 ha. Prior to any archaeological work on the site development had begun in the southern portion of the site.

## 1.2 Site Location

- 1.2.1 The development area lies within open farmland. The development is bounded by Friarsfield Road to the south, by recent housing development to the east. To the north and west lies farmland and a small scale housing development.

## 2 HISTORICAL BACKGROUND

- 2.1 The Royal Commission on Ancient and Historical Monuments of Scotland lists a number of monuments showing the immediate landscape around the development is rich in prehistoric remains. These include a stone circle (now destroyed) (NMRS no: NJ80SE 25); a cairn and cists excavated by antiquarians (NMRS no: NJ80SE 18); a possible standing stone with cup mark (NMRS no: NJ80SE 48) and the findspot of a saddle quern (NMRS no: NJ80SE 119). Medieval to post-medieval remains are limited to an area of rig and furrow (NMRS no: NJ80SE 187).

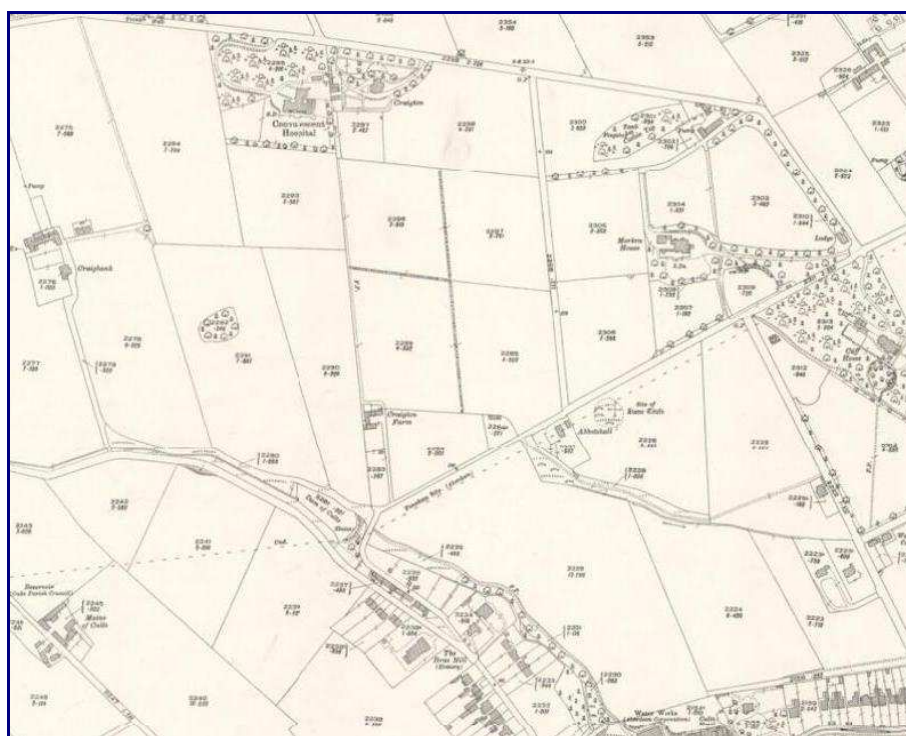


Plate 1: Extract from Ordnance Survey 1925 Aberdeenshire sheet 086.01



- 2.2 Historic mapping of the area (Plate 1) does not indicate any prior activity in the area of the development but does show that the field in which the development is located was, until at least the 1920's, split into four.
- 2.3 Whilst the RCAHMS does not list any known archaeological sites within the development area as a previously undeveloped greenfield site there always exists the possibility that hitherto unknown archaeological site may survive within the development area.

### **3 OBJECTIVES**

- 3.1 The objectives of the archaeological evaluation was to determine and assess the character, extent, condition, quality, date and significance of any buried archaeological remains within the proposed development area through evaluation trenching. The excavation of the previously stripped area fully excavated and recorded any archaeological remains.

### **4 METHODOLOGY**

#### **4.1 Archaeological evaluation**

- 4.1.1 The development area comprised a total of approximately 7 ha in total area however prior to any archaeological work taking place on-site development had started in the southern portion of the site, along with excavations for re-routing of a power cable across the north of the site. This development work meant that the actual area available for archaeological evaluation was 17,800 m<sup>2</sup> in total area. A 10% sample this undisturbed area was subject to machine excavation to uncover the nature and extent of any archaeological remains which may be present on the site.
- 4.1.2 The evaluation phase consisted of 16 trenches being excavated by a 13 tonne 360 machine equipped with a flat bladed ditching bucket operating under the constant supervision of an experienced field archaeologist. Each trench was recorded using AOC *pro forma* trench record sheets and any potential features investigated further to assess their character and date.
- 4.1.3 The trenches were placed to ensure comprehensive coverage of the development area and to investigate areas of potential better survival of archaeological deposits.

#### **4.2 Archaeological excavation**

- 4.2.1 During a site visit to establish the impact of the development in the southern portion of the site a number of archaeological features were noted in an area had already been stripped of topsoil. The area containing archaeological features was cleaned by hand before being excavated. It was then recorded by both digital and Black & White photography, drawn to an appropriate scale and a written record produced using AOC *pro forma* context sheets.

### **5 RESULTS**

#### **5.1 Introduction**

- 5.1.1 All archaeological works were conducted between the 10<sup>th</sup> and the 18<sup>th</sup> December 2013. Overall weather conditions were cold but dry throughout the course of the work and the archaeological visibility was good.
- 5.1.2 The various data gathered from the evaluation and excavations are presented as a series of appendices:

Appendix 1: Evaluation trench descriptions;

Appendix 2: Context Register;  
Appendix 3: Photographic Register;  
Appendix 4: Drawing Register;  
Appendix 5: Finds Register;  
Appendix 6: Samples Register;  
Appendix 7: reproduces the '*Discovery and Excavation in Scotland*' entry

## 5.2 Evaluation

5.2.1 The evaluation comprised 16 trenches set on a variety of alignments with a total area of 2,318m<sup>2</sup> representing more than the 10% sample required of the 17,800 m<sup>2</sup> area available for archaeological evaluation (Figure 2). The evaluation revealed a generally thin topsoil of dark brown/grey silty clay and gravel, typically around 0.35m thick, but slightly deeper at the base of the gentle south facing slope that comprised most of the evaluation area. The topsoil overlay a sandy clay glacial till with frequent plough scarring showing that the area has been subject to plough truncation.



Plate 2: Trench 6 post-excavation, from south-east.

5.2.2 Two stone filled pits [027 & 029] were revealed during the evaluation, in trenches 10 and 8 respectively. Pits [027 & 029] were oval in plan, measured 1.6 m by 1.2 m by 0.32 m deep and 1.5 m by 1.0 m by 0.18 m deep respectively. Both pits were filled with similar deposits (028 & 030) of sub-angular stone in a medium compact dark grey brown silty clayey sand. Neither of these pits produced any dating evidence but they were very similar in character to pits [002 and 024] in the excavation area which contained 19<sup>th</sup> to 20<sup>th</sup> century pottery and glass (see below). No further archaeological features were revealed during the evaluation.





Plate 3: Stone filled pit [027], from south.

### 5.3 Excavation

- 5.3.1 In an area stripped of topsoil during the development works a number of archaeological features were identified within an area measuring c. 22 m by 15 m at the north-east of the excavation area (Figure 3). The natural subsoil in this area was composed of clayey sands and gravels, as opposed to the sandy clays found across the remainder of the development. The area of the archaeological features was subsequently hand cleaned and the features excavated and recorded. A total of 11 cut features and two spreads of material were identified.



Plate 4: Area of excavation, from north-east.

- 5.3.2 The majority of the cut features comprised a series of small, shallow pits [004, 006, 008, 010, 012, 014, 017, 019 & 022] cut into the natural subsoil (026) (Figure 3). These pits were sub-circular to oval in plan, measuring between 0.2 m by 0.2 m and 0.6 m by 0.6 m and were between 0.08 m and 0.21 m in depth. Each of these pits contained similar single fill (005, 007, 009, 011, 013, 015, 016, 018 & 023) of dark brown to grey silty sand with occasional gravel and stone. No clear pattern could be discerned in the spatial arrangement to the pits that would suggest they formed a structure and no diagnostic dating material was recovered during the excavation of these features.



Plate 5: Pits [008, 010 & 012], from east.

- 5.3.3 Two large stone filled pits [002 & 024] were identified of similar character were identified (Figure 3). Pit [002] was oval in plan, measuring 1.35 m by 0.97 m and 0.37 m deep. Pit [024] was keyhole shaped in plan, measuring 2.19 m by 2.09 m and 0.30 m deep with a deeper (0.45m) sub-triangular bowl to the south-east. The natural sandy clay (026) underlying this deeper bowl was heat affected, being baked hard and reddish. Both of these pits were filled with similar deposits of deliberately dumped stone (003 & 025) with water borne silty sands filling the boulder interstices. Both (003 & 025) contained 19<sup>th</sup> to 20<sup>th</sup> century pottery and glass. The function of these two pits is obscure, the heat affected natural below [024] is indicative of *in-situ* burning but no charcoal rich deposits or other evidence was recovered from this feature to suggest the nature of the burning.
- 5.3.4 Along side the cut features two linear spreads of material were revealed (020 & 021) oriented east to west (Figure 3). Deposit (020) was similar in character to the topsoil (001) and formed an irregular spread measuring 3.8m by 0.5m and was between 0.05m and 0.1m deep. Deposit (021) was composed of large sub-rounded stone set within an organic rich silty material and measured 7.0m by 3.0m and was between 0.05m and 0.10m deep. Both of these deposits align with a former field boundary depicted on the 19<sup>th</sup> to 20<sup>th</sup> century mapping (Plate 1), Deposit (020) probably represents the boundary line with stone rich deposit (021) being the remains of field clearance to the edges of the field.





Plate 6: Pit [024], from south-east.

## **6 CONCLUSIONS AND RECOMMENDATIONS**

### **6.1 Evaluation**

- 6.1.1 The undisturbed area of the development site was subject to a comprehensive archaeological evaluation given the limitations imposed by the development works. No significant archaeological remains pre-dating the 19<sup>th</sup> to 20<sup>th</sup> century were identified.

### **6.2 Excavation**

- 6.2.1 Despite the fact that there was no diagnostic dating evidence for the majority of the small pits identified in the excavation area, these could well represent prehistoric activity, of which the surrounding landscape is rich in evidence for. Little can be said about the nature of this activity however as the features do not form any readily identifiable structures. The archaeological remains appear confined to an area of sand and gravel subsoil, fully exposed in the topsoil strip.
- 6.2.2 As the archaeological features were fully recorded during the current phase of work and no significant features were identified in the evaluation trenches no further archaeological works on site are considered necessary. This recommendation will require confirmation by Aberdeen City Council as advised by Judith Stones, Keeper of Archaeology.

## **7 REFERENCES**

### **7.1 Bibliographic References**

AOC Archaeology 2013 *Friarsfield Road, Cults, Aberdeen Archaeological Evaluation and Excavation: Written Scheme of Investigation*. Unpublished AOC Project Design

Scottish Government 2010 Scottish Planning Policy.

Scottish Government 2010 PAN 2/2011 Planning & Archaeology.

### **7.2 Cartographic References**

Ordnance Survey 1925 Aberdeenshire sheet 086.01.

---

# **Friarsfield Road, Cults, Aberdeen: Archaeological Evaluation & Excavation Data Structure Report**

## **Section 2: Appendices**

## APPENDIX 1: EVALUATION TRENCH DESCRIPTIONS

### Trench 1

<i>Dimensions</i>	100m by 4m
<i>Orientation</i>	N-S
<i>Depth of Excavation</i>	0.3m
<i>Significant Features</i>	None
<i>Non-Significant features</i>	Modern stone filled pit
<i>Soil make-up</i>	Topsoil of dark brown/grey silty clay and gravel with roots, some larger rocks and occasional pieces of modern ceramics and glass.
<i>Natural</i>	Pale orange sandy clay and rocks. Glacial till
<i>Finds</i>	None

### Trench 2

<i>Dimensions</i>	100m by 2m
<i>Orientation</i>	N-S
<i>Depth of Excavation</i>	0.3m – 0.5m
<i>Significant Features</i>	None
<i>Non-Significant features</i>	none
<i>Soil make-up</i>	Topsoil of dark brown/grey silty clay and gravel with roots, some larger rocks and occasional pieces of modern ceramics and glass.
<i>Natural</i>	Pale orange sandy clay and rocks. Glacial till
<i>Finds</i>	None

### Trench 3

<i>Dimensions</i>	50m by 2m
<i>Orientation</i>	NW-SE
<i>Depth of Excavation</i>	0.32m
<i>Significant Features</i>	None
<i>Non-Significant features</i>	From NW, at 30m rubble filled field drain, at 36m water pipe tap, 40m ceramic field drain
<i>Soil make-up</i>	Topsoil of dark brown/grey silty clay and gravel with roots, some larger rocks and occasional pieces of modern ceramics and glass.
<i>Natural</i>	Pale orange sandy clay and rocks. Glacial till
<i>Finds</i>	None

### Trench 4

<i>Dimensions</i>	50m by 2m
<i>Orientation</i>	NW-SE
<i>Depth of Excavation</i>	0.28m – 0.35m
<i>Significant Features</i>	None
<i>Non-Significant features</i>	At NW end 0m Rubble filled field drain, orientation E-W
<i>Soil make-up</i>	Topsoil of dark brown/grey silty clay and gravel with roots, some larger rocks and occasional pieces of modern ceramics and glass.
<i>Natural</i>	Pale orange sandy clay and rocks. Glacial till
<i>Finds</i>	None

### Trench 5

<i>Dimensions</i>	50m by 2m
<i>Orientation</i>	NW-SE
<i>Depth of Excavation</i>	0.28m
<i>Significant Features</i>	None
<i>Non-Significant features</i>	31m-37m from NW, plough scars running N-S, 0.6m wide.
<i>Soil make-up</i>	Topsoil of dark brown/grey silty clay and gravel with roots, some larger rocks and occasional pieces of modern ceramics and glass.
<i>Natural</i>	Pale orange sandy clay and rocks. Glacial till
<i>Finds</i>	None



#### Trench 6

<i>Dimensions</i>	50m by 2m
<i>Orientation</i>	NW-SE
<i>Depth of Excavation</i>	0.30m
<i>Significant Features</i>	None
<i>Non-Significant features</i>	None
<i>Soil make-up</i>	Topsoil of dark brown/grey silty clay and gravel with roots, some larger rocks and occasional pieces of modern ceramics and glass.
<i>Natural</i>	Pale orange sandy clay and rocks. Glacial till
<i>Finds</i>	None

#### Trench 7

<i>Dimensions</i>	50m by 2m
<i>Orientation</i>	NW-SE
<i>Depth of Excavation</i>	0.40m - 0.66m
<i>Significant Features</i>	None
<i>Non-Significant features</i>	From NW end at 29m field boundary line of shallow irregular disturbance filled with topsoil.
<i>Soil make-up</i>	Topsoil of dark brown/grey silty clay and gravel with roots, some larger rocks and occasional pieces of modern ceramics and glass.
<i>Natural</i>	Pale orange sandy clay and rocks. Glacial till
<i>Finds</i>	None

#### Trench 8

<i>Dimensions</i>	50m by 2m
<i>Orientation</i>	NW-SE
<i>Depth of Excavation</i>	0.34m – 0.50m
<i>Significant Features</i>	Small oval pit [029] with fill [030]. Likely a modern feature.
<i>Non-Significant features</i>	At 30-34m from NW disturbed patch filled with topsoil reflecting the old hedge line. At 50m ceramic field drain orientation N-S
<i>Soil make-up</i>	Topsoil of dark brown/grey silty clay and gravel with roots, some larger rocks and occasional pieces of modern ceramics and glass.
<i>Natural</i>	Pale orange sandy clay and rocks. Glacial till
<i>Finds</i>	None

#### Trench 9

<i>Dimensions</i>	50m by 2m
<i>Orientation</i>	W-E
<i>Depth of Excavation</i>	0.33m – 0.35m
<i>Significant Features</i>	None
<i>Non-Significant features</i>	At 37-40m from W disturbed patch filled with topsoil reflecting the old hedge line.
<i>Soil make-up</i>	Topsoil of dark brown/grey silty clay and gravel with roots, some larger rocks and occasional pieces of modern ceramics and glass.
<i>Natural</i>	Pale orange sandy clay and rocks. Glacial till
<i>Finds</i>	None

#### Trench 10

<i>Dimensions</i>	105m by 2m
<i>Orientation</i>	S-N
<i>Depth of Excavation</i>	0.35m – 0.70m
<i>Significant Features</i>	Stone filled pit [027] with fill [028] at 15.3m from S end. Likely a modern feature.
<i>Non-Significant features</i>	From S end, 71m-76m broken bedrock, 80m-83m spread of dark material, possibly hedge line.
<i>Soil make-up</i>	Topsoil of dark brown/grey silty clay and gravel with roots, some larger rocks and occasional pieces of modern ceramics and glass.
<i>Natural</i>	Pale orange sandy clay and rocks. Glacial till

<i>Finds</i>	None
<b>Trench 11</b>	
<i>Dimensions</i>	130m by 2m
<i>Orientation</i>	W-E
<i>Depth of Excavation</i>	0.35m – 0.45m
<i>Significant Features</i>	None
<i>Non-Significant features</i>	From W end, 3m stone filled pit 1.7m diameter, 0.1m deep. At 13m bedrock outcrop, at 33-39m hedge line, at 62m modern test pit.
<i>Soil make-up</i>	Topsoil of dark brown/grey silty clay and gravel with roots, some larger rocks and occasional pieces of modern ceramics and glass.
<i>Natural</i>	Pale orange sandy clay and rocks. Glacial till
<i>Finds</i>	None
<b>Trench 12</b>	
<i>Dimensions</i>	53m by 2m
<i>Orientation</i>	N-S
<i>Depth of Excavation</i>	0.28m – 0.40m
<i>Significant Features</i>	None
<i>Non-Significant features</i>	Plough scars orientation N-S.
<i>Soil make-up</i>	Topsoil of dark brown/grey silty clay and gravel with roots, some larger rocks and occasional pieces of modern ceramics and glass.
<i>Natural</i>	Pale orange sandy clay and rocks. Glacial till
<i>Finds</i>	None
<b>Trench 13</b>	
<i>Dimensions</i>	55m by 2m
<i>Orientation</i>	E-W
<i>Depth of Excavation</i>	0.37m – 0.40m
<i>Significant Features</i>	None
<i>Non-Significant features</i>	From E end at 12-20m topsoil filled hollow, possibly old hedge line.
<i>Soil make-up</i>	Topsoil of dark brown/grey silty clay and gravel with roots, some larger rocks and occasional pieces of modern ceramics and glass.
<i>Natural</i>	Pale orange sandy clay and rocks. Glacial till
<i>Finds</i>	None
<b>Trench 14</b>	
<i>Dimensions</i>	55m by 2m
<i>Orientation</i>	E-W
<i>Depth of Excavation</i>	0.35m – 0.37m
<i>Significant Features</i>	None
<i>Non-Significant features</i>	None
<i>Soil make-up</i>	Topsoil of dark brown/grey silty clay and gravel with roots, some larger rocks and occasional pieces of modern ceramics and glass.
<i>Natural</i>	Pale orange sandy clay and rocks. Glacial till
<i>Finds</i>	None
<b>Trench 15</b>	
<i>Dimensions</i>	55m by 2m
<i>Orientation</i>	W-E
<i>Depth of Excavation</i>	0.27m – 0.37m
<i>Significant Features</i>	None
<i>Non-Significant features</i>	None
<i>Soil make-up</i>	Topsoil of dark brown/grey silty clay and gravel with roots, some larger rocks and occasional pieces of modern ceramics and glass.

## Friarsfield Road, Cults, Aberdeen: Archaeological Evaluation & Excavation Data Structure Report

*Natural*

Pale orange sandy clay and rocks. Glacial till

*Finds*

None

### **Trench 16**

*Dimensions*

60m by 2m

*Orientation*

E-W

*Depth of Excavation*

0.28m – 0.32m

*Significant Features*

None

*Non-Significant features*

From E end, at 35-50m natural is all fragmented pink/red bedrock.

*Soil make-up*

Topsoil of dark brown/grey silty clay and gravel with roots, some larger rocks and occasional pieces of modern ceramics and glass.

*Natural*

Pale orange sandy clay and rocks. Glacial till

*Finds*

None

## APPENDIX 2: CONTEXT REGISTER

Context No.	Area	Description and Interpretation
001	A	Dark brown humic clayey sand with frequent roots and water rounded stone with 19 <sup>th</sup> to 20 <sup>th</sup> century pottery and glass (not retained). Across site up to 0.3m deep. <b>Topsoil.</b>
002	A	Oval cut oriented E-W measuring 1.35m by 0.97m and 0.37m deep. Sharp break of slope at top leads to near vertical sides which break gently to a concave base <b>Cut of pit.</b>
003	A	Sub-angular to sub-rounded stone up to 0.4m by 0.3m by 0.1m in size in a matrix of loose silty sand with frequent roots and gravel with 19 <sup>th</sup> to 20 <sup>th</sup> century pottery and glass (not retained).. <b>Deliberately dumped stone filling pit [002].</b>
004	A	Sub-circular cut, measuring 0.26m by 0.24m and 0.10m deep. Sharp break of slope at top leads to steep sides that break sharply to a rounded base. <b>Cut of posthole or small pit.</b>
005	A	Dark brown soft silty sand with occasional gravel <b>Fill of [004].</b>
006	A	Oval pit oriented NW-SE, measuring 0.39m by 0.23m and 0.08m deep. Sharp break of slope at top leads to steep sides that break gently to a concave base. <b>Cut of small pit.</b>
007	A	Dark brown soft silty sand with occasional gravel. <b>Fill of pit [006].</b>
008	A	Oval cut oriented E-W, measuring 0.47m by 0.42m and 0.21m deep. Sharp break of slope at top leads to steep sides that break sharply to a pointed base. <b>Cut of small pit or posthole.</b>
009	A	Dark brown soft silty sand with occasional gravel. <b>Fill of [008].</b>
010	A	Circular cut, measuring 0.28m by 0.28m and 0.10m deep. Sharp break of slope at top leads to vertical sides that break sharply to a flat base. <b>Cut of small pit or posthole.</b>
011	A	Dark brown soft silty sand with occasional gravel. <b>Fill of [010].</b>
012	A	Sub-circular pit, measuring 0.66m by 0.59m and 0.10m deep. Gentle break of slope at top leads to shallow sides that break gently to a concave base. <b>Cut of pit.</b>
013	A	Dark brown soft silty sand with rounded stone up to 0.2m by 0.2m by 0.1m in size and occasional gravel. <b>Fill of [012].</b>
014	A	Oval cut oriented E-W, measuring 0.70m by 0.40m and 0.12m deep. Sharp break of slope at top leads to steep sides which break sharply to a flat base. <b>Cut of pit.</b>
015	A	Dark greyish brown firm silty sand with frequent sub-angular stone up to 0.3m by 0.2m by 0.1m in size. Lithic fragment (Find 001) within deposit. <b>Fill of [014].</b>
016	A	Dark greyish brown firm silty sand with frequent roots and sub-angular stone up to 0.2m by 0.2m by 0.1m in size. <b>Fill of [019]</b>
017	A	Sub-circular cut, measuring 0.56m by 0.50m and 0.09m deep. Gentle break of slope at top leads to gently sloping sides which break gently to a pointed base. <b>Cut of pit.</b>
018	A	Dark greyish brown firm silty sand with frequent sub-angular stone up to 0.3m by 0.3m by 0.1m in size. <b>Fill of [017]</b>
019	A	Circular cut, measuring 0.56m by 0.50m and 0.14m deep. Sharp break of slope at top leads to steep sides that break sharply to a flat base. <b>Cut of pit.</b>
020	A	Irregular linear deposit, measuring 3.8m by 0.5m and 0.1m deep of topsoil and sub-angular stone with 19 <sup>th</sup> to 20 <sup>th</sup> century pottery and glass (not retained).

		<b>Plough scar or hedge row of modern origin.</b>
021	A	Spread of stone and organic rich material, measuring 7.0m by 3.0m and 0.10m deep. Composed of large sub-rounded stone within a dark grey to black organic rich silt with 19 <sup>th</sup> to 20 <sup>th</sup> century pottery and glass (not retained). <b>Probable field clearance of modern origin.</b>
022	A	Sub-oval cut oriented NE-SW, measuring 0.38m by 0.28m and 0.17m deep. Sharp break of slope at top leads to steep sides that break gently to a concave base. <b>Cut of small pit.</b>
023	A	Dark grey silty sand with occasional gravel. <b>Fill of [022].</b>
024	A	Keyhole shaped cut oriented N-S, measuring 2.19m by 2.09m and 0.45m deep. Sharp break of slope at top leads to near vertical sides that break sharply to a flat base. At the SE corner there is a deeper sub-triangular bowl (0.45m deep) with steep sides and flat base the natural clay below this bowl is heat affected. <b>Cut of pit of modern origin.</b>
025	A	Deposit of sub-angular to sub-rounded stone up to 0.3m by 0.2m by 0.1m with a loose, heavily rooted silty sand filling the boulder interstices with 19 <sup>th</sup> to 20 <sup>th</sup> century pottery and glass (not retained). <b>Deliberate in-fill of stone to [024] with a silting deposit around the stones.</b>
026	A	Varied deposit - Orange brown clayey sands and gravels and yellow orange sandy clay and gravel. <b>Natural glacial till.</b>
027	TR 10	Cut of oval pit oriented E-W, measuring 1.6m by 1.2m and 0.32m deep. Medium steep concave sides and flat base. <b>Cut of pit of probable modern origin.</b>
028	TR10	Deposit sub-angular stone up to 0.3m by 0.15m by 0.1m with a medium compact dark grey brown silty/clay/sand filling the boulder interstices. <b>Fill of pit [027]</b>
029	TR 8	Cut of oval pit oriented NW-SE, measuring 1.52m by 1.00m and 0.18m deep. Medium to gentle sloping concave sides with a flat base. <b>Cut of pit of probable modern origin.</b>
030	TR8	Deposit of sub-angular stone up to 0.12m by 0.10m by 0.08m with a medium compact dark grey/brown silt/clay/sand filling the boulder interstices. <b>Fill of pit [029]</b>

## APPENDIX 3: PHOTOGRAPHIC REGISTER

## Digital Photographs

Frame	Area	F. No	Description	From	Date
1-2	A	-	Registration	-	10/12/13
3-4	A	-	Pre-excavation of features	N	10/12/13
5-6	A	-	Pre-excavation of features	NE	10/12/13
7-8	A	-	Pre-excavation of features	E	10/12/13
9	A	020	Post-excavation of organic rich spread (020)	SW	11/12/13
10	A	020	Post-excavation of organic rich spread (020)	S	11/12/13
11-12	A	002	S-facing section	S	11/12/13
13-14	A	004	S-facing section	S	11/12/13
15-16	A	006	NE-facing section	NE	11/12/13
17-18	A	008	E-facing section	E	11/12/13
19-20	A	010 & 012	SE-facing section	SE	11/12/13
21-22	A	014	ESE-facing section	ESE	11/12/13
23-24	A	017	W-facing section	W	11/12/13
25-26	A	019	WSW-facing section	WSW	11/12/13
27	A	021	Post-excavation view of field clearance deposit (021)	SE	11/12/13
28	A	021	Post-excavation view of field clearance deposit (021)	SW	11/12/13
29	A	021	Post-excavation view of field clearance deposit (021) – Western end	S	11/12/13
30	A	021	Post-excavation view of field clearance deposit (021) – Eastern end	S	11/12/13
31-32	A	022	SE-facing section	SE	11/12/13
33-34	A	-	General post-excavation view	NE	12/12/13
35-36	A	-	General post-excavation view	E	12/12/13
37-38	A	-	General post-excavation view	SW	12/12/13
39-40	A	-	General post-excavation view	E	12/12/13
41-42	A	-	General post-excavation view	N	12/12/13
43-44	A	-	General post-excavation view	S	12/12/13
45-46	A	-	General post-excavation view	SW	12/12/13
47-48	A	-	General post-excavation view	E	12/12/13
49-50	A	024	E-facing section	E	12/12/13
51	A	024	Possible kiln [024]	SE	12/12/13
52	A	024	Possible kiln [024]	NE	12/12/13
53	A	024	Possible kiln [024] – post-excavation	NW	12/12/13
54	A	024	Possible kiln [024] – post-excavation	NE	12/12/13
55	A	024	Possible kiln [024] – post-excavation	SE	12/12/13
56	A	024	Possible kiln [024] – post-excavation	SW	12/12/13
57	A	024	Possible kiln [024] – post-excavation	W	12/12/13
58	TR1	-	General post-excavation view	W	16/12/13
59	TR2	-	Bedrock in TR2	S	16/12/13
60	TR2	-	Bedrock in TR2	SW	16/12/13
61	TR2	-	General post-excavation view	S	16/12/13
62	TR3	-	General post-excavation view	SE	16/12/13
63	TR4	-	General post-excavation view	SE	16/12/13
64	TR5	-	General post-excavation view	SE	16/12/13
65	TR6	-	General post-excavation view	SE	16/12/13
66	TR7	-	General post-excavation view	SE	16/12/13
67	TR8	-	General post-excavation view	SE	17/12/13
68	TR9	-	General post-excavation view	E	17/12/13



## Friarsfield Road, Cults, Aberdeen: Archaeological Evaluation & Excavation Data Structure Report

Frame	Area	F. No	Description	From	Date
69-70	TR10	027	Post excavation shot of pit [027] south facing section	S	17/12/13
71-72	TR8	029	Post excavation shot of pit [029] north west facing section	NW	17/12/13
73	TR10	-	General post-excavation view	S	17/12/13
74	TR11	-	General post-excavation view	E	17/12/13
75	TR12	-	General post-excavation view	S	17/12/13
76	TR13	-	General post-excavation view	W	18/12/13
77	TR14	-	General post-excavation view	W	18/12/13
78	TR15	-	General post-excavation view	E	18/12/13
79	TR16	-	General post-excavation view	W	18/12/13

### Black & White and Digital Film No. 1

Frame	Area	F. No	Description	From	Date
1-2	A	-	Registration	-	10/12/13
3-4	A	-	Pre-excavation of features	N	
5-6	A	-	Pre-excavation of features	NE	
7-8	A	-	Pre-excavation of features	E	
9-10	A	002	S-facing section	S	
11-12	A	004	S-facing section	S	
13-14	A	006	NE-facing section	NE	
15-16	A	008	E-facing section	E	
17-18	A	010 & 012	SE-facing section	SE	
19-20	A	014	ESE-facing section	ESE	
21-22	A	017	W-facing section	W	
23-24	A	019	WSW-facing section	WSW	
25-26	A	022	SE-facing section	SE	
27-28	A	-	General post-excavation view	NE	12/12/13
29-30	A	-	General post-excavation view	E	
31-32	A	-	General post-excavation view	SW	
33-34	A	-	General post-excavation view	E	
35	A	-	General post-excavation view	N	

**APPENDIX 4: DRAWING REGISTER**

Drawing No.	Area	Feature No.	Details	Scale
1	A	-	Plan of area A	1:50
2	A	002	S-Facing section	1:10
3	A	010 & 012	S-Facing section	1:10
4	A	004	SE-Facing section	1:10
5	A	006	NE-Facing section	1:10
6	A	008	E-Facing section	1:10
7	A	014	E-Facing section	1:10
8	A	017	W-Facing section	1:10
9	A	019	E-Facing section	1:10
10	A	022	SE-Facing section	1:10
11	A	024	E-Facing section	1:10
12	A	024	Post-excavation plan	1:20

**APPENDIX 5: FINDS REGISTER**

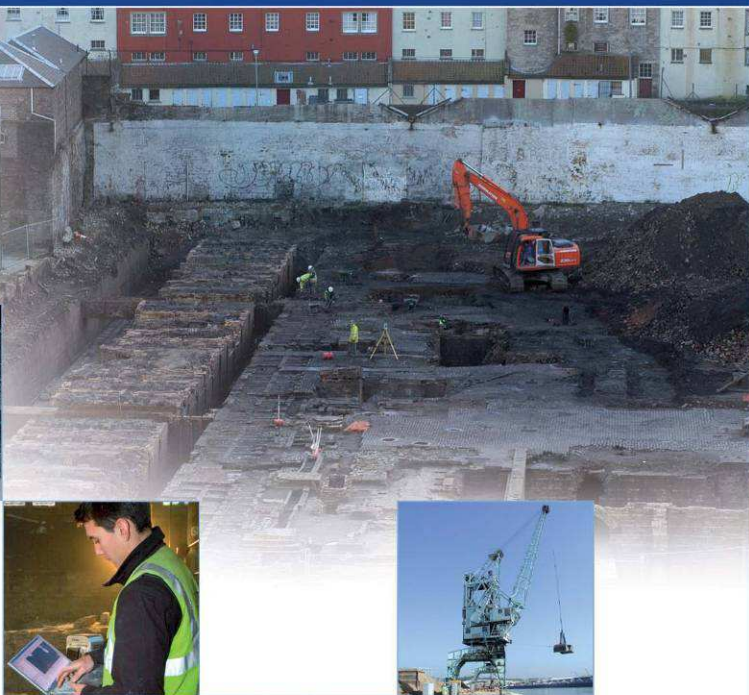
Finds No.	Area	Context No.	Description
1	A	015	Lithic fragment (Flint)

**APPENDIX 6: SAMPLE REGISTER**

Context No.	Area	Quantity (litres)
003	A	20
005	A	10
007	A	10
009	A	10
011	A	10
013	A	10
016	A	10
018	A	10
023	A	10

**APPENDIX 7: 'DISCOVERY AND EXCAVATION IN SCOTLAND' REPORT**

<b>LOCAL AUTHORITY:</b>	Aberdeen City Council
<b>PROJECT TITLE/SITE NAME:</b>	Friarsfield Road, Cults, Aberdeen
<b>PROJECT CODE:</b>	22625
<b>PARISH:</b>	Peterculter
<b>NAME OF CONTRIBUTOR:</b>	Jamie Humble
<b>NAME OF ORGANISATION:</b>	AOC Archaeology Group
<b>TYPE(S) OF PROJECT:</b>	Evaluation and Excavation
<b>NMRS NO(S):</b>	N/A
<b>SITE/MONUMENT TYPE(S):</b>	Pits
<b>SIGNIFICANT FINDS:</b>	None
<b>NGR (2 letters, 6 figures)</b>	NJ 8930 0362
<b>START DATE (this season)</b>	10 <sup>th</sup> December 2013
<b>END DATE (this season)</b>	18 <sup>th</sup> December 2013
<b>PREVIOUS WORK (inc DES)</b>	None
<b>MAIN (NARRATIVE) DESCRIPTION:</b> (May include information from other fields)	<p>AOC Archaeology Group undertook an archaeological evaluation and excavation on behalf of Cala Homes (East) Ltd during residential development of land at Friarsfield Road, Cults, Aberdeen. Prior to any archaeological work development on-site had begun limiting the area available for archaeological investigation.</p> <p>A total of 16 evaluation trenches with an area of 2318 m<sup>2</sup> were excavated in the 1.8 ha area that was unaffected by the development works representing more than the 10% sample required. The evaluation revealed a simple stratigraphic sequence of thin topsoil overlying sandy clay glacial till subsoil. No significant archaeological features were identified during the evaluation.</p> <p>Archaeological features were identified in an area stripped of topsoil during the development works. This area was hand cleaned and series of small pits was revealed. No identifiable patterns or structures were apparent, however all the features were heavily truncated. No diagnostic dating material was recovered from the excavation.</p>
<b>PROPOSED FUTURE WORK:</b>	To be confirmed
<b>CAPTION(S) FOR ILLUSTRATIONS:</b>	N/A
<b>SPONSOR OR FUNDING BODY:</b>	Cala Homes (East) Ltd
<b>ADDRESS OF MAIN CONTRIBUTOR:</b>	AOC Archaeology Group, Edgefield Road Industrial Estate, Loanhead, Midlothian, EH20 9SY
<b>EMAIL ADDRESS:</b>	admin@aocarchaeology.com
<b>ARCHIVE LOCATION</b>	Archive to be deposited in NMRS



**AOC Archaeology Group**, Edgefield Industrial Estate, Edgefield Road, Loanhead EH20 9SY  
 tel: 0131 440 3593 | fax: 0131 440 3422 | e-mail: [edinburgh@aocarchaeology.com](mailto:edinburgh@aocarchaeology.com)

[www.aocarchaeology.com](http://www.aocarchaeology.com)