

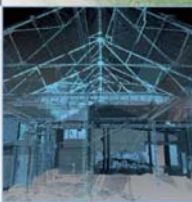
# Stenton House, East Lothian: Evaluation Data Structure Report

AOC 22503

Planning Ref: 130037-P

OASIS ID: aocarcha1-157873

29<sup>th</sup> August 2013



# Stenton House, East Lothian: Evaluation Data Structure Report

<b>On Behalf of:</b>	<b>Mr. Brian Fowler,</b> Stenton House, Stenton, nr. East Linton East Lothian
<b>National Grid Reference (NGR):</b>	<b>NT 6223 7426</b>
<b>AOC Project No:</b>	<b>AOC 22503</b>
<b>Prepared by:</b>	<b>Jake Streatfeild-James</b>
<b>Illustration by:</b>	<b>Jake Streatfeild- James</b>
<b>Date of Fieldwork:</b>	<b>23<sup>rd</sup> August 2013</b>
<b>Date of Report:</b>	<b>27<sup>th</sup> August 2013</b>

This document has been prepared in accordance with AOC standard operating procedures.

<b>Author: Jake Streatfeild-James</b>	<b>Date: 28<sup>th</sup> August 2013</b>
<b>Approved by: Lindsay Dunbar</b>	<b>Date: 29<sup>th</sup> August 2013</b>
<b>Draft/Final Report Stage: Draft</b>	<b>Date:</b>

**Enquiries to:** AOC Archaeology Group  
Edgefield Industrial Estate  
Edgefield Road  
Loanhead  
EH20 9SY

Tel. 0131 440 3593  
Fax. 0131 440 3422  
e-mail. [edinburgh@aocarchaeology.com](mailto:edinburgh@aocarchaeology.com)



## Contents

	<b>Page</b>
<b>List of illustrations</b> .....	<b>5</b>
<b>List of plates</b> .....	<b>5</b>
<b>List of appendices</b> .....	<b>5</b>
<b>1 INTRODUCTION</b> .....	<b>7</b>
1.1 Development Background .....	7
1.2 Location .....	7
1.3 Archaeological Background .....	7
<b>2 OBJECTIVES</b> .....	<b>7</b>
<b>3 METHOD</b> .....	<b>7</b>
<b>4 RESULTS</b> .....	<b>8</b>
4.1 Introduction .....	8
<b>5 CONCLUSION</b> .....	<b>9</b>
<b>6 RECOMMENDATIONS</b> .....	<b>9</b>
<b>7 REFERENCES</b> .....	<b>9</b>
<b>APPENDIX 1: Trench Descriptions</b> .....	<b>11</b>
<b>APPENDIX 2: Photographic Register</b> .....	<b>12</b>
<b>APPENDIX 3: ‘Discovery and Excavation in Scotland’ Report</b> .....	<b>13</b>

## List of illustrations

Figure 1: Site Location

Figure 2: Trench Locations

## List of plates

Plate 1: Area pre-excavation

Plate 2: Trench 3 post excavation

## List of appendices

Appendix 1: Trench Descriptions

Appendix 2: Photographic Register

Appendix 3: '*Discovery and Excavation in Scotland*' Entry

## Abstract

---

This report presents the results of an archaeological evaluation undertaken by AOC Archaeology Group at Stenton House near East Linton, East Lothian in advance of the construction of a new house, associated access and gardens.

Four trenches totalling 64 m<sup>2</sup> and accounting for the required 5% evaluation were opened across the house plot. No structures, features, deposits or artefactual material of any archaeological significance were found by the evaluation. No further works are considered necessary.

# 1 INTRODUCTION

## 1.1 Development Background

1.1.1 A programme of archaeological works comprising an Archaeological Evaluation was required by PR Design, on behalf of their client, prior to the construction of a single house plot within the grounds of Stenton House, Stenton, nr East Linton in East Lothian (Planning Ref: 10/0037/P). The need for, and scope of, the archaeological works was determined by the East Lothian Council who are advised on archaeological matters by the East Lothian Council Archaeology Service (ELCAS).

1.1.2 The area lies within the administrative jurisdiction of the East Lothian Council (ELC), who are advised on archaeological matters by the East Lothian Council Archaeology Service (ELCAS). ELCAS required an intrusive archaeological evaluation of the development area. The works were conducted under the terms of a *Written Scheme of Investigation* (AOC 2012), approved by ELCAS on behalf of the Council and carried out in accordance with *Scottish Planning Policy* (2010) and *PAN 2/2011 Planning And Archaeology* (2011), in order to determine the nature, extent, condition, date and significance of any archaeological remains within the proposed development area.

## 1.2 Location

1.2.1 The proposed development lies wholly within the grounds of Stenton House, Stenton, East Linton, East Lothian (see figure 1).

## 1.3 Archaeological Background

1.3.1 There are no known sites of archaeological interest within the proposed development area. However, the site lies adjacent to the medieval village of Stenton and within the designed landscape of Stenton House, a Category B Listed Building built around 1820, and originally serving as the church manse. The possibility of identifying the remains of the original designed landscape therefore exists.

# 2 OBJECTIVES

2.1 The objectives of the evaluation, as set out within the *Written Scheme of Investigation* (AOC 2010) and approved by ELCAS, were:

- i) to determine the character, extent, condition, quality, date and significance of any buried archaeological remains within the proposed development area
- ii) to advise and implement an appropriate form of archaeological mitigation, such as excavation, post-excavation analyses and publication, given the infeasibility of preserving the archaeological material *in situ*, should significant archaeological remains be encountered.

# 3 METHOD

3.1 ELCAS requested a 5% sample evaluation of the development area. The site amounts to approximately 1,270 m<sup>2</sup> therefore a 5% sample equates to a minimum of 64 m<sup>2</sup>. The evaluation area excluded the south-west part of the site to maintain access and focused the trenches over the areas to be subjected to the greatest disturbance by the development, namely the house

footprint.

- 3.2 The trial trenching will establish the extent, condition, character, quality and date of any archaeological features present. Excavation was undertaken in shallow units/spits until the first significant archaeological horizon or natural drift geology was reached. All machine excavation was supervised by an experienced field archaeologist. All potentially significant archaeological features were cleaned and defined prior to sample excavation to determine their significance.



Plate 1 – Area Pre Excavation

## 4 RESULTS

### 4.1 Introduction

- 4.1.1 The evaluation was conducted on 23rd August 2013. The weather conditions during the evaluation were dry and clear allowing for good archaeological visibility.

- 4.1.2 The various data gathered from the evaluation are presented as a series of appendices:

Appendix 1: Trench Descriptions;  
Appendix 2: Photographic Register;  
Appendix 3: reproduces the '*Discovery & Excavation in Scotland*' entry.

- 4.1.3 Four ten metre trenches were opened across the site and all showed similar profiles comprising of a topsoil of soft dark brown sandy silt varying in depth between 0.4 m and 0.5 m. This overlay an orange brown silty sand with frequent sub rounded stones. No archaeological features or deposits were found within any of the trenches nor were any significant small finds noted (Plates 1 and 2).



Plate 2 – Trench 3 Post Excavation

## 5 CONCLUSION

- 5.1 No significant archaeological structures/features or deposits were identified by the evaluation. Scanning of the spoil arisings from the evaluation trenches failed in identifying any residual artefactual material. The significant balance of probability is that the development area is archaeologically sterile.

## 6 RECOMMENDATIONS

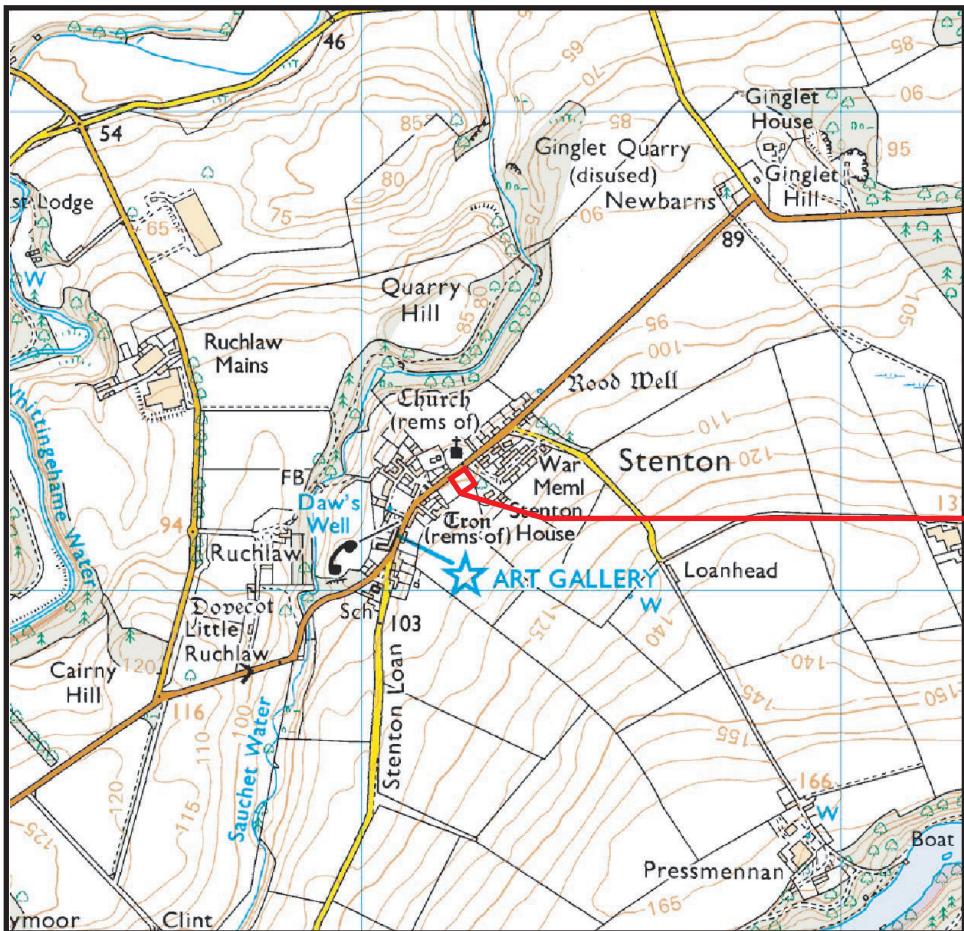
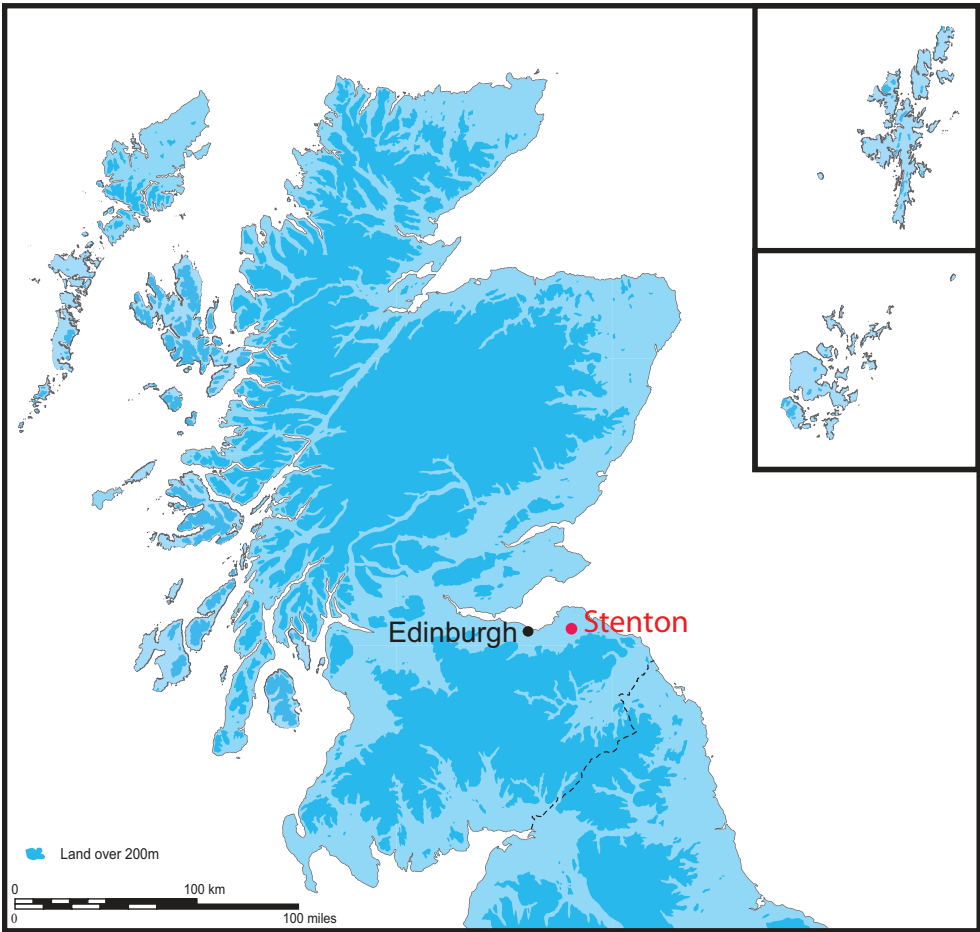
- 6.1 As no significant archaeological features or artefacts were identified it is recommended that no further archaeological works are required. This recommendation will require confirmation by ELCAS on behalf of East Lothian Council

## 7 REFERENCES

Scottish Government 2010 *Scottish Planning Policy*.

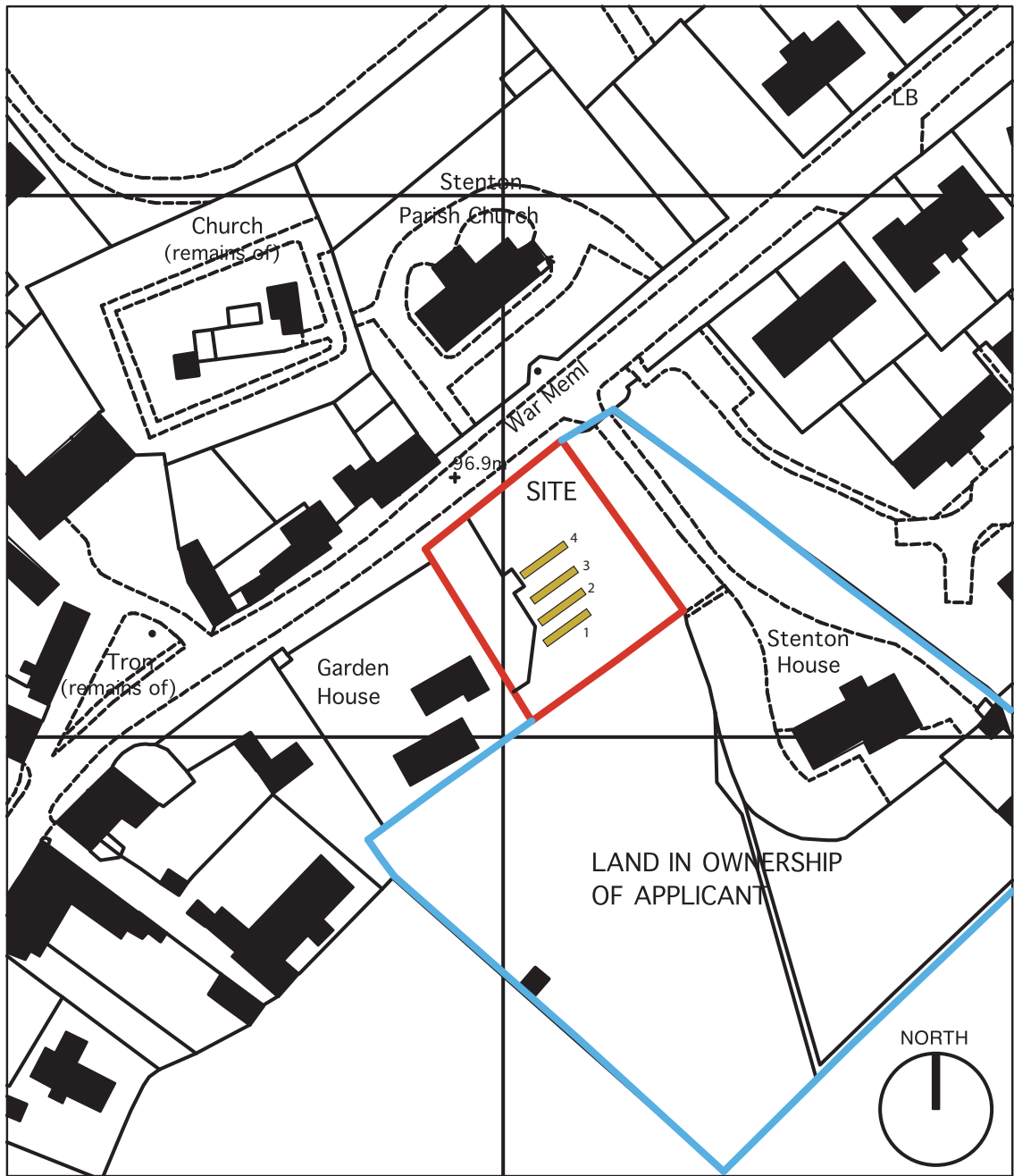
Scottish Government 2011 *Planning And Archaeology 2/2011*.





Ordnance Survey © Crown copyright [2009] All rights reserved. Licence number 100023757.

Figure 1: Location of the site at Stenton House



10m Evaluation Trench

Figure 2: Trench Layout

adapted from a drawing provided by the client

# Stenton House, East Lothian: Evaluation Data Structure Report

## Section 2: Appendices

## APPENDIX 1: Trench Descriptions

### Trench 1

<i>Dimensions</i>	10 m x 1.6 m
<i>Orientation</i>	E – W
<i>Depth of trench</i>	0.5 m
<i>Depth of topsoil</i>	0.4m
<i>Features</i>	None
<i>Significant Features</i>	None
<i>Subsoil</i>	Orange Silty Sand
<i>Finds</i>	None

### Trench 2

<i>Dimensions</i>	10 m x 1.6 m
<i>Orientation</i>	E – W
<i>Depth of trench</i>	0.5 m
<i>Depth of topsoil</i>	0.4 m
<i>Features</i>	None
<i>Significant Features</i>	None
<i>Subsoil</i>	Orange Silty Sand
<i>Finds</i>	None

### Trench 3

<i>Dimensions</i>	10 m x 1.6 m
<i>Orientation</i>	E – W
<i>Depth of trench</i>	1.17 m
<i>Depth of topsoil</i>	0.3 m
<i>Features</i>	None
<i>Significant Features</i>	None
<i>Subsoil</i>	Orange Silty Sand
<i>Finds</i>	None

### Trench 4

<i>Dimensions</i>	10 m x 1.6 m
<i>Orientation</i>	E – W
<i>Depth of trench</i>	0.7 m
<i>Depth of topsoil</i>	0.7 m
<i>Features</i>	None
<i>Significant Features</i>	None
<i>Subsoil</i>	Orange Silty Sand
<i>Finds</i>	None

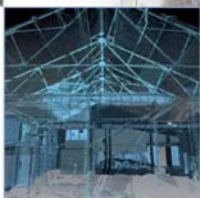
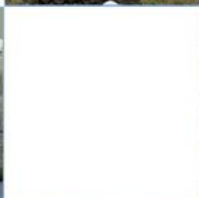
## APPENDIX 2: Photographic Register

Digital Film 1

Frame	Trench	Description	From
1		General Shot of Area Pre-excavation	NE
2	Tr.1	Post excavation view of Tr.1	W
3	Tr.2	Post excavation view of Tr.2	W
4	Tr.3	Post excavation view of Tr.3	E
5	Tr.4	Post excavation view of Tr.4	W
6	-	Post excavation shot of Area	SE

**APPENDIX 3: 'Discovery and Excavation in Scotland' Report**

<b>LOCAL AUTHORITY:</b>	East Lothian Council
<b>PROJECT TITLE/SITE NAME</b>	Stenton House, East Lothian: Evaluation
<b>PROJECT CODE:</b>	AOC 22503
<b>PARISH:</b>	East Linton
<b>NAME OF CONTRIBUTOR:</b>	Jake Streatfeild-James
<b>NAME OF ORGANISATION:</b>	AOC Archaeology Group
<b>TYPE(S) OF PROJECT:</b>	Archaeological Evaluation
<b>NMRS NO(S):</b>	None
<b>SITE/MONUMENT TYPE(S):</b>	None
<b>SIGNIFICANT FINDS:</b>	None
<b>NGR</b> (2 letters, 6 figures)	NT 622 742
<b>START DATE</b> (this season)	23 <sup>rd</sup> August 2013
<b>END DATE</b> (this season)	23 August 2013
<b>PREVIOUS WORK</b> (incl. <i>DES</i> ref.)	Designed Landscape survey DES 2005, 50 Evaluation and Excavation DES 2006, 59
<b>MAIN DESCRIPTION:</b> (May include information from other fields)	An archaeological evaluation was undertaken at Stenton House, East Lothian in advance of the construction of a new house, associated access and gardens.  Four trenches totalling 64 m <sup>2</sup> and accounting for the required 5% evaluation were opened across the house plot. No structures, features, deposits or artefactual material of any archaeological significance were found by the evaluation. No further works are considered necessary.
<b>PROPOSED FUTURE WORK:</b>	None
<b>CAPTION(S) FOR ILLUSTRS:</b>	N/A
<b>SPONSOR OR FUNDING BODY:</b>	PR Design
<b>ADDRESS OF MAIN CONTRIBUTOR:</b>	AOC Archaeology Group, Edgefield Road Industrial Estate, Edgefield Road, Loanhead, Midlothian, EH20 9SY
<b>EMAIL ADDRESS:</b>	<a href="mailto:edinburgh@acarchaeology.com">edinburgh@acarchaeology.com</a>
<b>ARCHIVE LOCATION</b> (intended/deposited)	Archive to be deposited in NMRS



**AOC Archaeology Group**, Edgefield Industrial Estate, Edgefield Road, Loanhead EH20 9SY  
tel: 0131 440 3593 | fax: 0131 440 3422 | e-mail: [edinburgh@aacarchaeology.com](mailto:edinburgh@aacarchaeology.com)

[www.aocarchaeology.com](http://www.aocarchaeology.com)