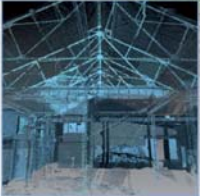


Stage 1A (Infrastructure Works), Chapelton of Elsick, Aberdeenshire Archaeological Evaluation Data Structure Report

28th August 2013

AOC22471



Stage 1A (Infrastructure Works), Chapelton of Elsick, Aberdeenshire

Archaeological Evaluation

Data Structure Report

On Behalf of: Elsick Development Company (EDC)
c/o Turnberry Planning Limited
41-43maddox Street
London
W1S 2PD

National Grid Reference (NGR): NO 8970 9346

AOC Project No: 22471

Prepared by: Lindsay Dunbar

Illustration by: Gemma Hudson

Date of Fieldwork: 12th – 16th August 2013

Date of Report: 27th August 2013

This document has been prepared in accordance with AOC standard operating procedures.

Author: Lindsay Dunbar

Date: 27th August 2013

Approved by: Diana Sproat

Date: 28th August 2013

Draft Report Stage: Draft

Date: 28th August 2013

Enquiries to: AOC Archaeology Group
Edgefield Industrial Estate
Edgefield Road
Loanhead
EH20 9SY

Tel. 0131 440 3593
Fax. 0131 440 3422
e-mail. admin@aocarchaeology.com

Contents

	Page
List of illustrations	3
List of plates	3
List of appendices	3
Summary	4
1 INTRODUCTION	5
1.1 Project Background	5
1.2 Development Proposal	5
1.3 Site Location	5
1.4 Site & Archaeological background	5
2 OBJECTIVES	6
3 METHODOLOGY	6
4 RESULTS.....	7
5 CONCLUSION	9
6 RECOMMENDATIONS.....	10
7 REFERENCES	10
APPENDIX 1: TRENCH SUMMARIES	12
APPENDIX 2: CONTEXT REGISTER	18
APPENDIX 3: FINDS REGISTER.....	18
APPENDIX 4: PHOTOGRAPHIC REGISTER	19
APPENDIX 5: ' <i>DISCOVERY AND EXCAVATION IN SCOTLAND</i> ' (DES) REPORT	21

List of illustrations

Figure 1: Site location

Figure 2: Trench location

List of plates

Plate 1: View of southernmost trenches, Trench 20 to Trench 28 from northeast

Plate 2: View of plough scarring commonly encountered throughout the evaluation, Trench 2

Plate 3: View of bedrock outcrop, eastern end of Trench 4

Plate 4: View of pit [2201], southwest facing section, Trench 22

List of appendices

Appendix 1 Trench Summaries

Appendix 2 Context Register

Appendix 3 Finds Register

Appendix 4 Photographic Register

Appendix 5 *'Discovery and Excavation in Scotland'* Entry

Summary

AOC Archaeology Group was commissioned by Turnberry Planning Limited on behalf of the Elsick Development Company (EDC) to undertake an archaeological evaluation on Stage 1 of the large scale mixed use development at Chapelton of Elsick, Aberdeenshire. The development encompasses a large area with the Stage 1 split into two separate phases, Stage 1A (Infrastructure) and Stage 1B (Residential). This report details the evaluation results from the Stage 1A (Infrastructure) works.

In total a 7% evaluation was required totaling some 6,027m² of evaluation trenches. Twenty-eight trenches were opened with only a single feature, an undated stone filled pit, was identified. Two unstratified lithics were recovered and the remains of 'rig and furrow' agriculture were found in some trenches, alongside extensive plough scarring and numerous outcrops of bedrock.

1 INTRODUCTION

1.1 Project Background

1.1.1 AOC Archaeology Group was commissioned by Turnberry Planning Limited on behalf of the Elsick Development Company (EDC) to undertake an archaeological evaluation ahead of a large scale mixed use development at Chapelton of Elsick, Aberdeenshire. The proposed development lies within the administrative area of Aberdeenshire Council which are advised on archaeological matters by the Aberdeenshire Council Archaeology Service, ACAS. A programme of archaeological works had been specified by ACAS on behalf of Aberdeenshire Council in keeping with the policies outlined in *Scottish Planning Policy* (2010) and *PAN 2/2011 Planning And Archaeology* (2011) in order to record the extent and significance of any archaeological remains which may be present within the development area.

1.1.2 The objective of the archaeological works was to determine the existence of any buried archaeological remains within the development area by means of a programme of trial trenching. A Written Scheme of Investigation outlining the entire programme of archaeological works was agreed with Aberdeenshire Council in advance of the evaluation being undertaken (AOC Archaeology 2013). The works undertaken and reported on within this report are on the Stage 1A (Infrastructure Works). The Stage 1B (Residential works) scheduled for later 2014.

1.2 Development Proposal

1.2.1 The EDC have gained 'Permission in Principle' from Aberdeenshire Council for up to 4,045 units with associated retail, commercial and community development (reference APP/2011/3100) and also Full Permission for 'Phase 1a' which comprises 802 residential units and associated infrastructure including main roads and SUDS basin (reference APP/2011/3103).

1.2.2 Phase 1a permission will be brought forwards in development 'stages'. Stage 1 comprises the first 255 units and associated infrastructure. Stage 1 will be further subdivided into the 'Infrastructure Works' (Stage 1A), which are scheduled for Autumn 2013, and 'Residential Works' (Stage 1B) which are scheduled for later in 2014.

1.3 Site Location

1.3.1 The development area occupies mostly agricultural land located to the immediate west of the A90, opposite Newtonhill (Figure 1). The overall development is focused around Elsick House and the Stage 1 works are located within the south-east corner, centred on NGR NO 89498 93508 (centre). It is focused around the farms of Cairnhall, Nether Cairnhall and Windyledge.

1.4 Site & Archaeological background

1.4.1 The Royal Commission on Ancient and Historical Monuments of Scotland (RCAHMS) lists only one site that is within the boundaries of the Phase 1a Permission. Upper Cairnhill Cairn, (NMRS No.NO89SE 8) is the site of a large stone cairn recorded in the 1864 Name Book as the '...base of a cairn (which) can be traced on the ground and a large quantity of stones remains...'. Unfortunately nothing now remains and the area of the cairn's location is now under cultivation.

1.4.2 The local Sites and Monuments Record (SMR) list a further two sites within the Stage 1 development area. Firstly there is the old Aberdeen to Edinburgh road (SMR No: NO99SW0007) which dates from 1684 and runs along the eastern edge of the Stage 1 area. It is still in active use as a road. Secondly, there is Auchnahar Farmstead (SMR No: NO99SW0078) which is depicted on the First and Second Edition Ordnance Survey maps as two buildings neither of which now exist.

- 1.4.3 A final site is Nether Cairnhill Farmstead which was identified by an EIA. This site is a farmstead which is depicted on the 1st Edition map and elements of this structure are believed to be present within existing farm of Nether Cairnhill.
- 1.4.4 In the larger environment around the development area (some 250m) there are a further three possible sites, all farms, including Windyedge Farm (NMRS No. NO89SE 61), Wester Cairnhill Farm (SMR No. NO89SE0077) and Rockhead Farm, all on First Edition Ordnance Survey map. There is also a single site of a possible archaeological monument in the form a standing stone at Cairnhill (SMR No. NO89SE0085). The First Edition map shows a standing stone but no trace now exists.

2 OBJECTIVES

- 2.1 The objectives of the archaeological works were:
- to determine and assess the character, extent, condition, quality, date and significance of any buried archaeological remains within the proposed development area;
 - to advise and implement an appropriate form of mitigation, such as excavation, post-excavation analyses and publication, given the infeasibility of preserving the archaeological material in situ, should significant archaeological remains be encountered.

3 METHODOLOGY

- 3.1 The *Written Scheme of Investigation* proposed the excavation of trenches equating to a 7% sample of the development area thus requiring the excavation of trenching up to 6,025m² (AOC Archaeology 2013). A further 3% contingency was available should the initial 7% evaluation uncover significant archaeological remains.
- 3.2 Upon arrival on site it was apparent that the trench nearest to the A90 was within an area that had seen considerable landscaping as part of the construction of the slip-road of the A90 and it was decided not to open any trenches within this area. All of the remaining 28 trenches as shown on trenching plan contained within the *Written Scheme of Investigation* were opened (see Figure 2).
- 3.3 In total the area evaluated totalled 6,115m² just over the required 7% figure specified within the *Written Scheme of Investigation* (AOC Archaeology 2013).
- 3.4 All trenches were excavated with a 17 tonne excavator using a 2.5m wide ditching bucket. The trench details are summarised in Appendix 1. machine excavation was conducted in shallow units/spits through topsoil/overburden to the upper surface of the underlying geological deposits. The evaluation trial trenching was undertaken according to AOC Archaeology Group's standard operating procedures as detailed with the *Written Scheme of Investigation* (AOC 2012).

4 RESULTS

4.1 The various detailed data gathered from the evaluation is presented as a series of appendices:

- Appendix 1 trench summaries;
- Appendix 2 context register;
- Appendix 3 finds register
- Appendix 4 photographic register
- Appendix 5 '*Discovery and Excavation in Scotland*' (DES) entry.

4.2 Figure 2 identifies the position and orientations of all trenches 0065cavated (Plate 1). The works were conducted between 12th August and 16th August 2013. The weather conditions during the evaluation were very favourable with sunshine prevalent and only a few rain short showers. Overall archaeological visibility was good.



Plate 1: View of southernmost trenches (Trench 20 to Trench 28) from the north-east

4.3 The site was covered by agricultural topsoil varying in depth from 0.25m to 0.51m. The natural geology was predominantly orangish-brown mottled fine-medium sandy clay subsoil with occasional patches of gravel and clay. The thin topsoil meant that in many trenches there was evidence of plough scarring, both in a north/south and east/west orientation (Plate 2). There were also areas where the natural bedrock was close to the surface and exposed by the evaluation. Trenches 4, 11, 12 and 17 all contained bedrock outcrops (Plate 3).

4.4 Most of the trenches opened revealed at least a single land drain with a heavier concentration of these to the southern part of the development area. Two drain types were encountered - the narrow cut with a ceramic drain and the larger stone filled 'rubble' drains.

4.5 In a number of the trenches there were remains of 'rig and furrow' agriculture in Trenches 6, 7, 13, 16, 23 and 24, although this had in places been truncated by later ploughmarks, which had reduced the remains to shallow furrows with no traces visible at ground surface. The 'rig and furrow' measured between 4m and 8m wide across these fields, mostly around 6m apart, on both north/south and east/west alignments. Plough truncation has reduced the remains to shallow furrows with no traces visible at ground surface.



Plate 2: View of plough scarring commonly encountered throughout the evaluation, Trench 2



Plate 3: View of bedrock outcrop, eastern end of Trench 4



Plate 4: View of pit [2201], south-west facing section, located in Trench 22

- 4.6 A single pit [2201] was found in Trench 22 (Plate 4). This pit measured 1.12m by 0.91m and was sub-circular in plan. In profile the pit was u-shaped and well-defined with a maximum depth of 0.31m. The single fill [2202] consisted of a dark brown medium sandy matrix with some charcoal flecking and lots of sub-angular and sub-rounded stones which were especially prevalent in the base and around the eastern side of the pit. No other inclusions were noted.
- 4.7 Two finds were recorded during the evaluation. Both finds were found within the topsoil and as such unstratified. Both are flint, one a burnt flint chunk and the other a flint split flint nodule. Both are of prehistoric date but are not diagnostic enough to date more closely.
- 4.8 No archaeological features or finds were identified during the evaluation with the area examined proving to be generally archaeologically sterile.

5 CONCLUSION

- 5.1 The 'rig and furrow' identified on site is a common feature within the countryside of Aberdeenshire. The Royal Commission on Ancient and Historical Monuments (RCAHMS) notes that more than 800 sites exist within the boundaries of Aberdeenshire Council that are classed as 'rig and furrow'. Similarly the Aberdeenshire Council Sites and Monuments Record (SMR) shows over 500 sites which are described as 'rig and furrow'. Descriptions of these remains are consistent with those found during the evaluation. It dates from the medieval period onwards, although the remains on this site are most likely post-medieval or later in date given that no earlier medieval pottery was recovered.
- 5.2 The pit, though undeniably archaeological in nature, is difficult to interpret. It is undated and, although stony charcoal rich pits are a feature of Neolithic activity, no artefacts were present within its fill to successfully date it. A 50m² area was opened around the feature in an attempt to locate other contemporary features, although nothing was found.

- 5.3 The recovery of the two unstratified lithics point to prehistoric activity in this area, although such a small amount of material and only a single feature does suggest more background activity than the presence of a significant site.
- 5.4 The evaluation was able to examine a representative sample of the site and neither significant archaeological features nor significant unstratified artefacts were encountered during the evaluation beyond the possible truncated rig and furrow, a single undated pit and two struck lithics.
- 5.5 The significant balance of probability is that the development area is archaeologically sterile.

6 RECOMMENDATIONS

- 6.1 No further archaeological works are considered necessary. The recommendation will require confirmation by ACAS on behalf of Aberdeenshire Council.

7 REFERENCES

AOC Archaeology 2013 *Stage 1, Chapelton of Elsick, Aberdeenshire: Archaeological Evaluation Written Scheme of Investigation*. AOC Archaeology Project Design.

Scottish Government 2010 *Scottish Planning Policy*.

Scottish Government 2011 *PAN 2/2011 2/2011 Planning and Archaeology*.

**Stage 1A (Infrastructure
Works), Chapelton of Elsick,
Aberdeenshire:
Archaeological Evaluation
Data Structure Report**

Section 2: Appendices

APPENDIX 1: TRENCH SUMMARIES

Trench 1

Dimensions	51m by 2.5m
Orientation	N-S
Depth of Topsoil	0.26m to 0.32m
Features	Some N-S and E-W plough scarring
Drains	None
Subsoil	Fine/medium sand with clay, mottled orange/brown with clay rich grey patches
Finds	None

Trench 2

Dimensions	102m by 2.5m
Orientation	NW-SE
Depth of Topsoil	0.31m to 0.52m
Features	Some N-S and E-W plough scarring. Deep topsoil at SE end of trench, shallower up slope to NW
Drains	None
Subsoil	Fine/medium sand with clay, mottled orange/brown with clay rich grey patches
Finds	None

Trench 3

Dimensions	50m by 2.5m
Orientation	NW-SE
Depth of Topsoil	0.32m to 0.58m
Features	Some N-S and E-W plough scarring. Deep topsoil at SE end of trench, shallower up slope to NW
Drains	None
Subsoil	Fine/medium sand with clay, mottled orange/brown with clay rich grey patches
Finds	None

Trench 4

Dimensions	101m by 2.5m
Orientation	E-W
Depth of Topsoil	0.27m to 0.33m
Features	Some N-S and E-W plough scarring.
Drains	None
Subsoil	Fine/medium sand with clay, mottled dark orange/brown very stony with bedrock outcrops towards eastern end
Finds	None

Trench 5

Dimensions	101m by 2.5m
Orientation	E-W
Depth of Topsoil	0.28m to 0.32m
Features	None
Drains	None
Subsoil	Fine/medium sand with clay, mottled dark orange/brown
Finds	None

Trench 6

Dimensions	101m by 2.5m
Orientation	WNW-ESE
Depth of Topsoil	0.31m to 0.32m
Features	Large N-S linear shallow gullies, c.1m wide spaced c. every 6 -7m – remnant rig-and-furrow
Drains	None
Subsoil	Fine/medium sand with clay, mottled dark orange/brown
Finds	None

Trench 7

Dimensions	101m by 2.5m
Orientation	E-W
Depth of Topsoil	0.32m to 0.35m
Features	Large N-S linear shallow gullies, c.1m wide spaced c. every 6 -7m – remnant rig-and-furrow. Some E-W plough scarring
Drains	Two N-S narrow ceramic drains
Subsoil	Fine/medium sand with clay, mottled dark orange/brown
Finds	None

Trench 8

Dimensions	50m by 2.5m
Orientation	c.N-S
Depth of Topsoil	0.31m to 0.32m
Features	Some N-S plough scarring
Drains	Single NNW-SSE rubble drain 0.7m wide
Subsoil	Fine/medium sand with clay, mottled dark orange/brown
Finds	None

Trench 9

Dimensions	101m by 2.5m
Orientation	E-W
Depth of Topsoil	0.31m to 0.33m
Features	Some N-S and E-W plough scarring
Drains	Two N-S narrow ceramic drains
Subsoil	Fine/medium sand with clay, mottled dark orange/brown becoming increasingly stony to the west as the trench moves upslope
Finds	None

Trench 10

Dimensions	100m by 2.5m
Orientation	N-S
Depth of Topsoil	0.29m to 0.32m
Features	None
Drains	None
Subsoil	Fine/medium sand with clay, mottled dark orange/brown becoming increasingly stony to the west
Finds	None

Trench 11

Dimensions	100m by 2.5m
Orientation	N-S
Depth of Topsoil	0.26m to 0.32m
Features	None
Drains	None
Subsoil	Fine sand with clay, mottled dark orange/brown becoming increasingly stony to the south where bedrock outcrops encountered
Finds	None

Trench 12

Dimensions	101m by 2.5m
Orientation	E-W
Depth of Topsoil	0.28m to 0.32m
Features	None
Drains	None
Subsoil	Fine sand with clay, mottled dark orange/brown with bedrock outcrops encountered along length of trench
Finds	None

Trench 13

Dimensions	100m by 2.5m
Orientation	NE-SW
Depth of Topsoil	0.32m to 0.41m
Features	Four large N-S linear shallow gullies, c.1m wide spaced c. every 6 -7m – remnant rig-and-furrow. Some N-S and E-W plough scarring
Drains	None
Subsoil	Fine/medium sand with clay, mottled dark orange/brown
Finds	None

Trench 14

Dimensions	50m by 2.5m
Orientation	N-S
Depth of Topsoil	0.29m to 0.46m
Features	None
Subsoil	Fine/medium sand with clay, mottled dark orange/brown
Finds	None

Trench 15

Dimensions	100m by 2.5m
Orientation	NW-SE
Depth of Topsoil	0.32m to 0.33m
Features	Some N-S plough scarring
Drains	None
Subsoil	Fine/medium sand mottled dark orange/brown with clay rich patches and concentrations of gravel
Finds	None

Trench 16

Dimensions	100m by 2.5m
Orientation	NE-SW
Depth of Topsoil	0.31m to 0.35m
Features	Four large N-S linear shallow gullies, c.1m wide spaced c. every 6 -7m – remnant rig-and-furrow. Some N-S and E-W plough scarring
Drains	None
Subsoil	Fine/medium sand mottled dark orange/brown with clay rich patches and concentrations of gravel
Finds	None

Trench 17

Dimensions	101m by 2.5m
Orientation	NW-SE
Depth of Topsoil	0.30m to 0.41m
Features	None
Drains	Two N-S rubble drains and single N-S ceramic drain
Subsoil	Fine/medium sand mottled dark orange/brown with grey clay rich patches and bedrock outcrops at NW end of trench.
Finds	None

Trench 18

Dimensions	101m by 2.5m
Orientation	N-S
Depth of Topsoil	0.32m to 0.36m
Features	Some N-S plough scarring
Drains	Three N-S rubble drains
Subsoil	Fine/medium sand with clay, mottled dark orange/brown
Finds	None

Trench 19

Dimensions	52m by 2.5m
Orientation	N-S
Depth of Topsoil	0.31m to 0.42m
Features	Some N-S and E-W plough scarring
Drains	Single N-S rubble drain
Subsoil	Fine/medium sand with clay, mottled dark orange/brown
Finds	None

Trench 20

Dimensions	52m by 2.5m
Orientation	N-S
Depth of Topsoil	0.33m to 0.36m
Features	Some N-S plough scarring
Drains	Two N-S narrow ceramic drains
Subsoil	Fine/medium sand with clay, mottled dark orange/grey
Finds	None

Trench 21

Dimensions	101m by 2.5m
Orientation	E-W
Depth of Topsoil	0.34m to 0.56m
Features	Deep topsoil at southern end of trench masks a depression in subsoil in which the drains are situated. Some N-S and E-W plough scarring
Drains	One NW-SE rubble drain and two NW-SE narrow ceramic drains
Subsoil	Fine/medium sand with clay, mottled dark orange/brown with occasional stones
Finds	None

Trench 22

Dimensions	102m by 2.5m, plus 8m by 6m trench extension
Orientation	NW-SE
Depth of Topsoil	0.32m to 0.47m
Features	At northern end of trench a single stony pit, [2201]. Deep topsoil at southern end of trench masks a depression in subsoil in which the drains are situated. Some N-S and E-W plough scarring
Drains	One NW-SE rubble drain and four N-S narrow ceramic drains
Subsoil	Fine/medium sand with clay, mottled dark orange/brown.
Finds	Find No.1 Unstratified burnt flint chunk

Trench 23

Dimensions	102m by 2.5m
Orientation	E-W
Depth of Topsoil	0.31m to 0.33m
Features	Three large N-S linear shallow gullies, c.2.0m wide spaced c. every 6 -7m – remnant rig-and-furrow. Some N-S and E-W plough scarring
Drains	One N-S narrow ceramic drain
Subsoil	Fine/medium sand with clay, mottled dark orange/grey
Finds	None

Trench 24

Dimensions	103m by 2.5m
Orientation	E-W
Depth of Topsoil	0.31m to 0.33m
Features	Five large N-S linear shallow gullies, c.1m wide spaced c. every 6 -7m – remnant rig-and-furrow. Some N-S and E-W plough scarring
Drains	One N-S narrow ceramic drain
Subsoil	Fine/medium sand with clay, mottled dark orange/grey
Finds	None

Trench 25

Dimensions	50m by 2.5m
Orientation	NE-SW
Depth of Topsoil	0.32m to 0.45m
Features	Some N-S plough scarring
Drains	Single N-S narrow ceramic drain
Subsoil	Fine/medium grey sandy clay, some dark orange mottling
Finds	None

Trench 26

Dimensions	100m by 2.5m
Orientation	E-W
Depth of Topsoil	0.34m to 0.36m
Features	None
Drains	Single large N-S rubble drain
Subsoil	Fine/medium sand with clay, mottled dark orange/brown with lots of stone
Finds	None

Trench 27

Dimensions	102m by 2.5m
Orientation	E-W
Depth of Topsoil	0.33m to 0.35m
Features	Some N-S and E-W plough scarring
Drains	Two N-S narrow ceramic drains
Subsoil	Fine/medium grey sandy clay, some dark orange mottling
Finds	Find No.2 Unstratified split flint nodule

Trench 28

Dimensions	51m by 2.5m
Orientation	N-S
Depth of Topsoil	0.32m to 0.36m
Features	Some N-S plough scarring
Drains	None
Subsoil	Fine/medium grey sandy clay, some dark orange mottling
Finds	None

APPENDIX 2: CONTEXT REGISTER

Context No	Trench	Description
[2201]	Tr.22	Cut of pit. Sub-circular pit measuring 1.1m by 0.9m. Well defined with single fill [2202]. Pit u-shaped in profile with maximum depth of 0.3m
[2202]	Tr.22	Fill of pit [2201] - medium dark brown sandy matrix with charcoal flecking and numerous sub-angular and sub-rounded stone inclusions along abase and up eastern side.

APPENDIX 3: FINDS REGISTER

Find No.	Trench	Type	Description
1	Tr.21	ST	Burnt flint chunk
2	Tr.26	ST	Piece of flint nodule

APPENDIX 4: PHOTOGRAPHIC REGISTER

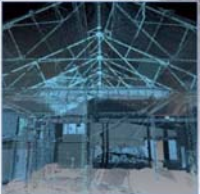
Digital

Frame	Trench	Description	From
1-2	Tr.1	PX view of Trench 1	N
3-4	Tr.3	Trench 3 under excavation	SE
5-6	-	General views of eastern end of development area	SE
7-8	Tr.3	PX view of Trench 3	NW
9-10	Tr.2	Views of plough scarring in Trench2	SE
11-12	Tr.2	PX view of Trench 2	NW
13	Tr.4	View of bedrock outcrop in eastern end of Trench 4	W
14-15	Tr.4	PX view of Trench 4	W
16	Tr.5	Trench 5 under excavation	E
17	Tr.5	PX view of Trench 5	W
18	Tr.6	PX view of Trench 6	W
19	Tr.7	PX view of Trench 7	W
20	Tr.8	Trench 8 under excavation	N
21	Tr.8	PX view of Trench 8	S
22	Tr.9	PX view of Trench 9	W
23	Tr.10	Trench 10 under excavation	E
24	Tr.10	PX view of Trench 10	W
25	Tr.11	PX view of Trench 11	S
26	Tr.11	View of bedrock in Trench 11	S
27	Tr.12	PX view of Trench 12	W
28	Tr.13	Trench 13 under excavation	SW
29	Tr.13	PX view of Trench 13	NE
30	Tr.14	PX view of Trench 14	N
31	Tr.15	Trench 15 under excavation	SE
32	Tr.15	PX view of Trench 15	NW
33	Tr.16	Trench 16 under excavation	NE
34	Tr.16	PX view of Trench 16	SW
35	Tr.17	Trench 3 under excavation	SE
36	Tr.17	PX view of Trench	NW
37	Tr.18	Trench 18 under excavation	S
38	Tr.18	PX view of Trench 18	N
39	Tr.19	Trench 19 under excavation showing plough scarring	S
40	Tr.19	PX view of Trench 19	N
41	Tr.20	PX view of Trench 20	N
42	Tr.21	PX view of Trench 21	S
43	Tr.22	PX view of Trench 22	NW
44-45	Tr.22	Pit [2201] showing SW facing section	SW
46	Tr.23	PX view of Trench 23	E
47	Tr.24	PX view of Trench 24	W
48-52	Tr.22	Showing general location of pit [2201] with trench extension	Various
53-55	Tr.22	Pit [2201] showing SW facing section	SW
56	Tr.25	PX view of Trench 25	NE
57	Tr.26	PX view of Trench 26	W
58	Tr.28	PX view of Trench 28	N

59	Tr.27	Trench 27 under excavation	SW
60	Tr.27	PX view of Trench 27	NE
61-65	-	General views of southern evaluation area	Various

APPENDIX 5: 'DISCOVERY AND EXCAVATION IN SCOTLAND' (DES) REPORT

LOCAL AUTHORITY:	Aberdeenshire Council
PROJECT TITLE/SITE NAME:	Stage 1A (Infrastructure Works), Chapelton of Elsick, Aberdeenshire
PROJECT CODE:	AOC 22471
PARISH:	Fetteresso
NAME OF CONTRIBUTOR:	Lindsay Dunbar
NAME OF ORGANISATION:	AOC Archaeology Group
TYPE(S) OF PROJECT:	Archaeological Evaluation
NMRS NO(S):	None
SITE/MONUMENT TYPE(S):	None
SIGNIFICANT FINDS:	None
NGR (2 letters, 6 figures)	NO 8970 9346 centrepoint
START DATE (this season)	12 th August 2013
END DATE (this season)	16 th August 2013
PREVIOUS WORK (incl. DES ref.)	None
MAIN (NARRATIVE) DESCRIPTION: (May include information from other fields)	AOC Archaeology Group was commissioned to undertake an archaeological evaluation on the Stage 1 of the large scale mixed use development at Chapelton of Elsick, Aberdeenshire. The development encompasses a large area with the Stage 1 split into two separate phases, Stage 1A (Infrastructure) and Stage 1B (Residential). In total a 7% evaluation was required totaling some 6,027m ² of evaluation trenches. 28 trenches were opened with only a single feature, an undated stone filled pit, identified. Two unstratified lithics were recovered and the remains of 'rig and furrow' agriculture were also found, alongside extensive plough scarring and numerous outcrops of bedrock. However in summary the trenching revealed neither features nor artefacts of archaeological significance.
PROPOSED FUTURE WORK:	None
CAPTION(S) FOR ILLUSTRS:	n/a
SPONSOR OR FUNDING BODY:	Elsick Development Company
ADDRESS OF MAIN CONTRIBUTOR:	AOC Archaeology Group; Edgefield Road Industrial Estate; Loanhead. Midlothian, EH20 9SY
EMAIL ADDRESS:	lindsay.dunbar@aocarchaeology.com
ARCHIVE LOCATION	Archive to be deposited in NMRS



AOC Archaeology Group, Edgefield Industrial Estate, Edgefield Road, Loanhead EH20 9SY
tel: 0131 440 3593 | fax: 0131 440 3422 | e-mail: edinburgh@aacarchaeology.com

www.aocarchaeology.com