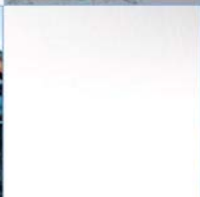
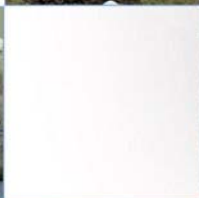


136 Peffermill Road, Edinburgh: Archaeological Watching Brief Data Structure Report

AOC 22762

OASIS No. aocarcha1-183572

3rd July 2014



AOC
Archaeology
Group



ARCHAEOLOGY

HERITAGE

CONSERVATION

136 Peffermill Road, Edinburgh: Archaeological Watching Brief Data Structure Report

On Behalf of: The City of Edinburgh Council

National Grid Reference (NGR): NT 2830 7150

AOC Project No: 22762

Prepared by: Kevin Paton

Illustration by: Kevin Paton

Date of Fieldwork: 9th June 2014 to 1st July 2014

Date of Report: 3rd July 2014

This document has been prepared in accordance with AOC standard operating procedures.

Author: Kevin Paton

Date: 3rd July 2014

Approved by: Martin Cook

Date: 8th July 2014

Draft/Final Report Stage: Draft

Date: 8th July 2014

Enquiries to: AOC Archaeology Group
Edgefield Industrial Estate
Edgefield Road
Loanhead
EH20 9SY

Tel. 0131 440 3593
Fax. 0131 440 3422
e-mail. edinburgh@aocarchaeology.com



Contents

	Page
List of Illustrations	2
List of Plates	2
List of Appendices	2
ABSTRACT	3
1 INTRODUCTION	4
1.1 Background	4
1.2 Site Location	4
1.3 Archaeological Background	4
3 OBJECTIVES	5
4 METHODOLOGY	5
5 RESULTS	5
6 CONCLUSION AND RECOMENDATIONS	5
7 REFERENCES	6
APPENDIX 1: CONTEXT REGISTERS	10
APPENDIX 2: PHOTOGRAPHIC REGISTER	10
APPENDIX 3: <i>'DISCOVERY AND EXCAVATION IN SCOTLAND'</i> REPORT	12

List of Illustrations

Figure 1: Site Location

Figure 2: 1850's OS map showing development area

Figure 3: Areas of watching brief

List of Plates

Plate 1: General shot of main drain trench

Plate 2: Shot of stones [003] and mortar [004]

Plate 3: General shot showing deposit [005]

List of Appendices

Appendix 1: Context Register

Appendix 2: Photographic Register

Appendix 3: Discovery and Excavation in Scotland Report

ABSTRACT

This report presents the results of an archaeological watching brief undertaken by AOC Archaeology Group on behalf of the City of Edinburgh SAC Consulting during ground breaking works associated with the creation of football pitches at 136 Peffermill Road, Edinburgh.

The works mainly involved the excavation of drainage trenches across the pitch areas using a bladed cutting wheel 0.25 m wide with a few larger drainage and cable trenches 0.5 m wide excavated around the football pitch.

No significant archaeological features or artefacts were revealed during the ground breaking works.

1 INTRODUCTION

1.1 Background

1.1.1 An archaeological watching brief was required by SAC Consulting on behalf of Edinburgh City Council during ground breaking works associated with the creation of football pitches at 136 Peffermill Road, Edinburgh. The scope of the works was determined by the City of Edinburgh Council as advised on archaeological matters by the City of Edinburgh Council Archaeology Service (CECAS). The works were conducted according to the terms of a *Written Scheme of Investigation* (AOC 2014) approved on behalf of the City of Edinburgh Council by CECAS and in accordance with *Scottish Planning Policy* (Scottish Government 2010) and *PAN 2/2011 Planning And Archaeology* (Scottish Government 2011).

1.2 Site Location

1.2.1 The development area lies to the south of Peffermill Road and is bounded by the railway line to the south and east and the Braid Burn to the west (Figure 1; centred at NT 2830 7150). The area is already currently being used as playing fields.

1.3 Archaeological Background

1.3.1 The development area is located within what were historically open fields due south of Peffermill House. In the area of Peffermill House there was a mill recorded as being in existence in 1630. The First Edition Ordnance Survey map of the 1850's (Figure 3) shows a surviving mill pond to the west of Peffermill House and to the north of the development area. This mill pond appear to be fed by a possibly an earlier course of the Braid (Peffer) Burn or an actual mill lade which can be clearly seen as a tree lined north to south aligned feature crossing the development area on Figure 2. The Braid (Peffer) Burn has since been canalized and presently forms the northwestern boundary of the current development area.



Figure 2 - 1850's OS map showing development area

3 OBJECTIVES

3.1 The objectives of the archaeological works are:

- i) to safeguard the archaeological resource from any adverse impacts created by ground works associated with the construction of a residential development at the site of the former Fort House;
- ii) to liaise with CECAS and the client in the event of significant archaeological features and/or small finds being unearthed as to the most appropriate response in safeguarding these features either by preservation *in situ*, if at all feasible, or by archaeological recording;
- iii) to report on the results of the watching brief.

4 METHODOLOGY

4.1 The majority of drainage trenches across the proposed football pitch were excavated using a bladed cutting wheel measuring 0.25 m wide. These trenches were not watched but they were left open for inspection when other works were taking place. All other excavations were conducted using a narrow bladed bucket measuring 0.5 m wide (Figure 3). All wider trenches associated with the football pitch were monitored by an experienced field archaeologist.

5 RESULTS

- 5.1 The archaeological works were conducted between the 9th June 2014 and the 1st July 2014. Weather conditions were fair throughout the course of the work conducted and archaeological visibility was good.
- 5.2 Topsoil [001] throughout the site was a very compact dark greyish brown silty clay averaging 0.35 m deep across the site. This covered a made ground [002] up to 0.8 m deep that consisted of compact greyish brown silty clay with frequent small sub angular stones and coal flecks (Plate 1). Some larger stones [003] and a mortar spread [004] were noted within the natural boulder clay [006] along the NE edge, most likely representing disturbance of the subsoil by previous activity on site (Plate 2).
- 5.3 Furthermore, a deposit of sub-angular stones [005] aligned NE-SW were also noted along the NE edge drain (Plate 3). The stone deposit measured 5.5 m wide but was not noted in any other trenches to the south or west and is most likely natural.

6 CONCLUSION AND RECOMENDATIONS

- 6.1 The archaeological excavations revealed two stone deposits that most likely relate to disturbance of the subsoil during the earlier creation of the playing fields and the deposition of the made ground that covers the site.
- 6.2 No significant archaeological features or artefacts were encountered during the watching brief.

7 REFERENCES

AOC Archaeology 2014 *Football pitches 136 Peffermill Road, Edinburgh: Archaeological Watching Brief Written Scheme of Investigation*. Unpublished AOC Project Design

Scottish Government 2010 Scottish Planning Policy.

Scottish Government 2010 PAN 2/2011 Planning & Archaeology.



Plate 1 - General shot of main drain trench



Plate 2- Shot of stones [003] and mortar [004]



Plate 3 - General shot showing deposit [005]

FOOTBALL PITCHES 136 PEFFERMILL ROAD, EDINBURGH:
ARCHAEOLOGICAL WATCHING BRIEF WRITTEN SCHEME OF INVESTIGATION

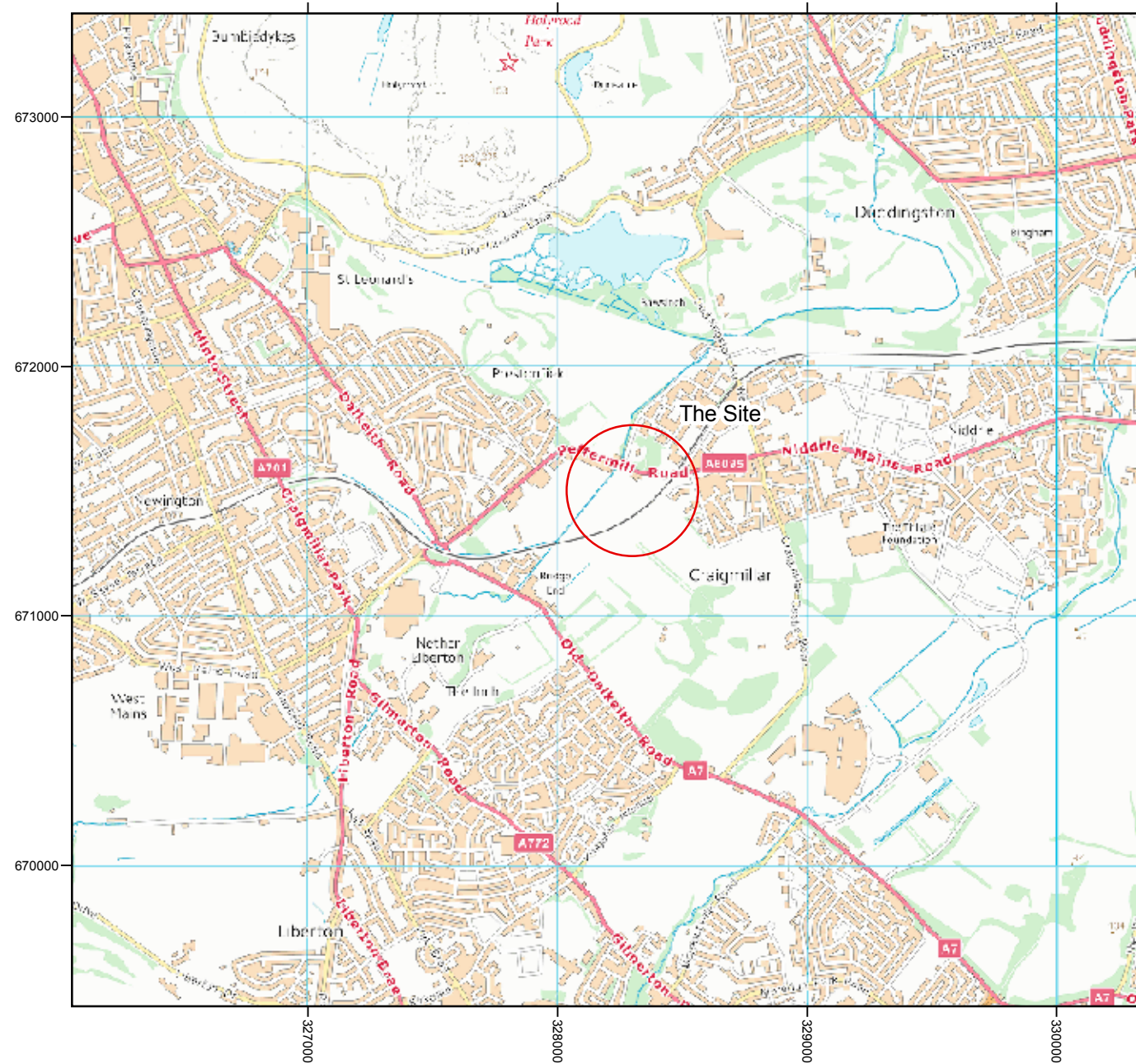
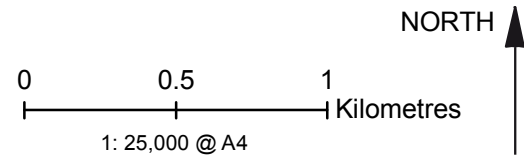


Figure 1: Site Location



Contains Ordnance Survey data © Crown Copyright and database right [2014]

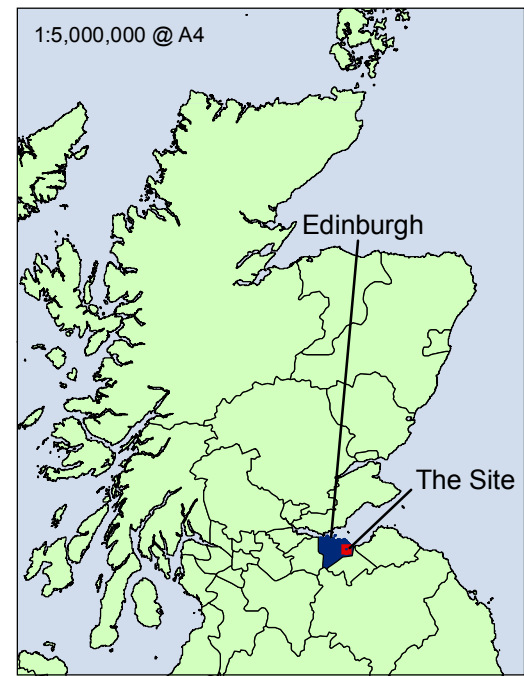
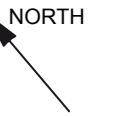


Figure 2: Detailed Site Plan showing
 Location of Drainage Works to be Monitored



- 160mm Ø Main Drain
- 80mm Ø Laterals @ 5m Centres
- 160mm Ø Cut-off Drain
- 150mm Filter Drain



Scale: 1:750 @ A3

Plan by SAC Commercial Ltd and S-WP Ltd.

136 Peffermill Road, Edinburgh: Archaeological Watching Brief Data Structure Report

Section 2: Appendices

APPENDIX 1: CONTEXT REGISTERS

Context No.	Description and Interpretation
001	Mid greyish brown silty clay averaging 0.35 m thick. Topsoil
002	Greyish brown silty clay with sub angular stone inclusions and coal flecks measuring 0.8 m thick. Made ground
003	Two large sub angular stones next to a mortar spread [004] and sitting in natural [006] measuring 0.5 m long (only seen in section). Demolition rubble
004	Degraded mortar deposit at base of made ground [002] and next to stones [003] measuring 0.25 m by 0.35 m by 0.05m. Mortar spread at base of made ground
005	Deposit of sub angular stones within natural clay [006] measuring 5.5 m wide. Probable natural stone
006	Light orange sandy clay with occasional sandstone boulder inclusions. Natural boulder clay

APPENDIX 2: PHOTOGRAPHIC REGISTER

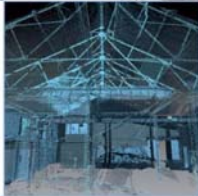
Digital Photographs

Frame	Description	From	Date
1	Sondage for sewage pipe in drain trench to SSW	SSW	9/6/14
2	W-facing section of sewage pipe	W	9/6/14
3	Ground works for concrete stand	W	9/6/14
4	Ground works for concrete stand	WSW	9/6/14
5	Ground works for concrete stand	SSW	9/6/14
6	Main drain trench – partial SSW section with 001, 002 and pipe	SSW	9/6/14
7-8	Main drain trench – with gravel layer 005	ESE	9/6/14
9-10	Main drain trench – possible feature 003 and 004	SSW	9/6/14
11-12	Main drain trench – detail of 005	SSW	9/6/14
13	Main drain trench – with gravel spread 005	ESE	9/6/14
14	Main drain trench – ceramic pipe in SSW section	SSW	9/6/14
15	Main drain trench – 003 and 004 detail	NNE	9/6/14
16	Main drain trench	SSW	9/6/14
17	Main drain trench	W	9/6/14
18-19	Manhole excavation – main drain trench E section	E	9/6/14
20	Main drain trench – general shot of portion dug on 12/6/14	S	13/6/14
21	Main drain trench – SSW facing section with made ground, cinder and pipe	SSW	13/6/14
22-23	Main drain trench – general shot of different type of natural clay	S	13/6/14
24	Light stand pit (L1) post ex	E	13/6/14
25	Light stand pit and its relation to main drain	E	13/6/14
26	L1 general post ex with ceramic pipe	W	13/6/14
27	Location of floodlights L3 and L4	N	13/6/14
28	Flood lights pit L2 with old ceramic drain	W	13/6/14
29	Trencher cut drain going towards main drain	W	13/6/14
30	Trencher cut drain detail of width	W	13/6/14
31	Floodlight pit L5 – post ex	W	13/6/14
32	Location of L5	SSW	13/6/14
33	Concreted flood light pit L4	S	13/6/14
34	Floodlight pit L6	W	13/6/14
35	Floodlight pit L6	WNW	13/6/14
36-37	Trencher machine cutting narrow drain	E	13/6/14

38	Detail of narrow trencher cut drain leading to main drain	E	13/6/14
39	General shot of concreted dug out 1	NNE	13/6/14
40	General shot of concreted dug out 1	NNE	13/6/14
41	T2 General post ex	SSW	13/6/14
42	T2 General post ex	NNW	13/6/14
43	Registration shot new camera	-	17/6/14
44-45	Sandstone outcrop in base of trench	Var	17/6/14
46-47	Sandstone rocks in subsoil/made ground	Var	17/6/14
48-49	Second out crop of sandstone	Var	17/6/14
50-51	General shots of two outcrops of sandstone	Var	17/6/14
52-53	Drainage channel – brick filled	SW	19/6/14
54-55	Drainage channel	NW	19/6/14
56-57	Typical profile of drainage channel	NE	19/6/14
58	General shot of track location	E	26/6/14
59	Shot of open track	E	26/6/14
60-61	General shots of track location	Var	26/6/14
62	General shot of larger backfilled area	N	30/6/14
63	Electric cable trench – general shot	ESE	30/6/14
64	General shot of site with backfilled larger area	E	30/6/14
65-66	General shot of electric cable trenches 1,2,3	NW	30/6/14
67	Ceramic drain in T3	SSW	30/6/14
68	View of excavations	SE	1/7/14
69-70	View of excavations	NW	1/7/14

APPENDIX 3: 'DISCOVERY AND EXCAVATION IN SCOTLAND' REPORT

LOCAL AUTHORITY:	City of Edinburgh Council
PROJECT TITLE/SITE NAME:	136 Peffermill Road, Edinburgh
PROJECT CODE:	22762
PARISH:	Edinburgh
NAME OF CONTRIBUTOR:	Kevin Paton
NAME OF ORGANISATION:	AOC Archaeology Group
TYPE(S) OF PROJECT:	Watching Brief
NMRS NO(S):	N/A
SITE/MONUMENT TYPE(S):	N/A
SIGNIFICANT FINDS:	None
NGR (2 letters, 6 figures)	NT 2386 7150
START DATE (this season)	9 th June 2014
END DATE (this season)	1 st July 2014
PREVIOUS WORK (inc DES)	N/A
MAIN (NARRATIVE) DESCRIPTION: (May include information from other fields)	<p>This report presents the results of an archaeological watching brief undertaken by AOC Archaeology Group on behalf of SAC Consulting during ground breaking works associated with the creation of football pitches at 136 Peffermill Road, Edinburgh.</p> <p>The works mainly involved the excavation of drainage trenches across the pitch areas using a bladed cutting wheel 0.25 m wide with a few larger drainage and cable trenches 0.5 m wide excavated around the football pitch.</p> <p>No significant archaeological features or artefacts were revealed during the ground breaking works.</p>
PROPOSED FUTURE WORK:	None
CAPTION(S) FOR ILLUSTRATIONS:	N/A
SPONSOR OR FUNDING BODY:	City of Edinburgh Council
ADDRESS OF MAIN CONTRIBUTOR:	AOC Archaeology Group Edgefield Road Industrial Estate Loanhead, Midlothian, EH20 9SY
EMAIL ADDRESS:	Kevin.paton@aocarchaeology.com
ARCHIVE LOCATION	Archive to be deposited in NMRS



AOC Archaeology Group, Edgefield Industrial Estate, Edgefield Road, Loanhead EH20 9SY
tel: 0131 440 3593 | fax: 0131 440 3422 | e-mail: edinburgh@aocarchaeology.com

www.aocarchaeology.com