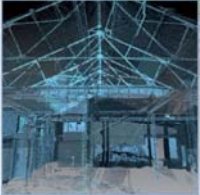


Perceton, Irvine (Phase 1): Archaeological Evaluation Data Structure Report

AOC Project 22828
Oasis No. aocarcha1-187006
25th September 2014



Perce-ton, Irvine (Phase 1): Archaeological Evaluation Data Structure Report

On Behalf of: Dawn Homes Ltd.
220 West George Street
Glasgow
G2 2PG

National Grid Reference (NGR): NS 3562 4095

AOC Project No: 22828

Prepared by: Kevin Paton

Illustration by: Kevin Paton

Date of Fieldwork: 5th – 7th August & 11th September 2014

Date of Report: 25th September 2014

This document has been prepared in accordance with AOC standard operating procedures.

Author: Kevin Paton

Date: 25th September 2014

Approved by: Martin Cook

Date: 29th September 2014

Draft/Final Report Stage: Draft

Date: 29th September 2014

Enquiries to: AOC Archaeology Group
Edgefield Industrial Estate
Edgefield Road
Loanhead
EH20 9SY

Tel. 0131 440 3593
Fax. 0131 440 3422
e-mail. admin@aocarchaeology.com



Contents

	Page
List of Illustrations	3
List of Plates	3
List of Appendices	3
Abstract.....	4
1 INTRODUCTION	5
1.1 Background	5
1.2 Location.....	5
1.3 Archaeological Background.....	5
2 OBJECTIVES	5
3 METHODOLOGY	6
4 RESULTS	6
5 CONCLUSION AND RECOMMENDATIONS.....	6
6 REFERENCES	7
APPENDIX 1: Trench Descriptions	10
APPENDIX 2: Context Register	17
APPENDIX 3: Photographic Record	17
APPENDIX 4: Drawing Register	18
APPENDIX 5: ‘Discovery and Excavation in Scotland’ Report.....	19

List of Illustrations

- Figure 1 Site location
Figure 2 Evaluation trench locations

List of Plates

- Plate 1 General shot of furrow [301] in Trench 3
Plate 2 Field boundary ditch [1601]

List of Appendices

- Appendix 1 Trench Descriptions
Appendix 2 Context Register
Appendix 3 Photographic Record
Appendix 4 Drawing Register
Appendix 5 '*Discovery and Excavation in Scotland*' Report

Abstract

This report presents the results of an archaeological evaluation undertaken in relation to a proposed residential development at Perceton, Irvine, North Ayrshire.

The evaluation required an 8% trenching sample of the available Phase 1 development area. A total of 28 trenches of varying lengths and alignments were excavated encountering agricultural furrows and a single field boundary ditch aligned WSW-ENE in the NW corner of the site. Out with the agricultural features no significant archaeological features or artefacts were revealed.

No further works are considered necessary within the evaluated area.

1 INTRODUCTION

1.1 Background

1.1.1 AOC Archaeology Group was commissioned by Dawn Homes Ltd. to undertake an archaeological evaluation of a proposed residential development at Perceton, Irvine, North Ayrshire. The evaluation was undertaken in order to satisfy the requirements of the local planning authority, North Ayrshire Council who are advised on archaeological matters by the West of Scotland Archaeology Service (WoSAS). The works were conducted according to the terms of a *Written Scheme of Investigation* (AOC 2014) approved on behalf of North Ayrshire Council by WoSAS and in accordance with the principles set out in *Scottish Planning Policy* (Scottish Government 2014) and *PAN 2/2011 Planning & Archaeology* (Scottish Government 2011).

1.2 Location

1.2.1 The site (centred on NGR NS 3562 4095) is situated within two fields to the NW of the B769, NE of the centre of Irvine (Figure 1). The Annick Water bounds the site to the NW, a residential estate to the SW and open fields to the NE (see Figure 1). The field being evaluated was previously used for agricultural grazing.

1.3 Archaeological Background

1.3.1 The Royal Commission on Ancient and Historical Monument of Scotland does not show any sites as lying within the development boundaries. However, a limekiln was depicted at this location on the 1st edition Ordnance Survey map of 1860 (WoSAS Site ID: 51443). This structure does not appear on current OS maps of the area. The Royal Commission does note that an archaeological desk based assessment and subsequent evaluation was conducted ahead of a housing development to the immediate southwest of the development area. These works uncovered a range of medieval and post-medieval features within the walled garden of the former Perceton House (NMRS No. NS34SE 7, WoSAS Site ID: 42796 & 5127). The features uncovered included a palisade enclosing a substantial timber building accessed through a defended entrance of probable 14th century date which was replaced by a sub-rectangular ditched enclosure.

1.3.2 Elsewhere to the southwest of the development area, a Mill Lade was depicted on the 1st edition Ordnance Survey map of 1860, running from the Annick Water to Perceton Mill (WoSAS Site ID: 51442). A dam (WoSAS Site ID: 51441) and sluice (WoSAS Site ID: 51440) were also depicted at the Annick Water end of the lade on the 1st edition which lies to the immediate west of the development area.

1.3.3 Further west, another archaeological assessment ahead of a residential development investigated a series of cropmarks at Holehouse (NMRS No. NS34SE 12, WoSAS Site ID: 893 & 6617). Geophysical survey and trial trenching demonstrated that much of the cropmarks were natural however the location of the ring-ditch roundhouse was confirmed.

2 OBJECTIVES

2.1 The objectives of the archaeological evaluation were:

- i) to determine and assess the character, extent, condition, quality, date and significance of any buried archaeological remains within the proposed development area;
- ii) to advise and implement an appropriate form of mitigation, such as excavation, post-excavation analyses and publication given the infeasibility of preserving the

archaeological material *in situ*, should significant archaeological remains be encountered.

3 METHODOLOGY

- 3.1 The evaluation comprised machine trenching of an 8% sample of the available development area (2.54 hectares). In total 1325 linear metres of trenching was completed using a 13 tonne and 22 tonne tracked excavator with a 2 m to 2.2 m wide ditching bucket. Excavation was undertaken in shallow units/spits until the first significant archaeological horizon. All machine excavation was supervised by an experienced field archaeologist and according to AOC Archaeology Group's standard operating procedures, and as per the methodology within the *Written Scheme of Investigation* (AOC 2014).

4 RESULTS

- 4.1 The archaeological evaluation was undertaken on the 5th to 7th August & 11th September 2014. Overall weather conditions were fair allowing for good archaeological visibility throughout the evaluation. In total, 1325 m of trenching was opened, varying in alignment and length.
- 4.2 The topsoil throughout the development area was a consistent dark greyish brown clay loam with occasional small stone inclusions and a few fragments of 19th and 20th century ceramics. The natural subsoil in the majority of the field was orangey brown sandy clay with frequent small stone inclusions with occasional yellowish grey clay seams.
- 4.3 Throughout the majority of trenches, furrows aligned WNW-ESE were encountered ranging in width from 1 m to 3.6 m wide (see contexts [201], [301] and [303]) and spaced approximately 4-5 m apart (Plate 1). Due to variable modern plough truncation throughout the field the furrows were between 0.05 m and 0.27 m deep. Similarly, modern ceramic tile field drains were encountered throughout the trenches aligned NW-SE.
- 4.3 A single field boundary ditch [1601] aligned at right angles to the furrows (WSW-ESE) was encountered in the NW corner of the field, visible in trenches 16, 17 and 18 (Figure 2; Plate 2). The ditch measured 1.4 m wide and 0.32 m deep filled with a dark brown clayey sand with coal fragment inclusions and containing a fragment of Scottish post medieval reduced ware. The bottom of a probable furrow [1701] was noted to the NW of this ditch, running parallel to it.

5 CONCLUSION AND RECOMMENDATIONS

- 5.1 From the trenches excavated within the development area, it has been demonstrated that the modern field system realigned an earlier system of post medieval rig and furrow. No other significant archaeological features or artefacts were revealed throughout the evaluation.
- 5.3 No further archaeological works are deemed necessary within this phase of the development. These recommendations will have to be approved by WoSAS on behalf of North Ayrshire Council.

6 REFERENCES

AOC Archaeology 2014, *Perceton, Irvine Archaeological Evaluation Written Scheme of Investigation*
Unpublished AOC project design

Scottish Government 2014 *Scottish Planning Policy 2014*

Scottish Government 2011 *Planning And Archaeology 2/2011*



Plate 1 - General shot of furrow [301] in Trench 3



Plate 2 - Field boundary ditch [1601]

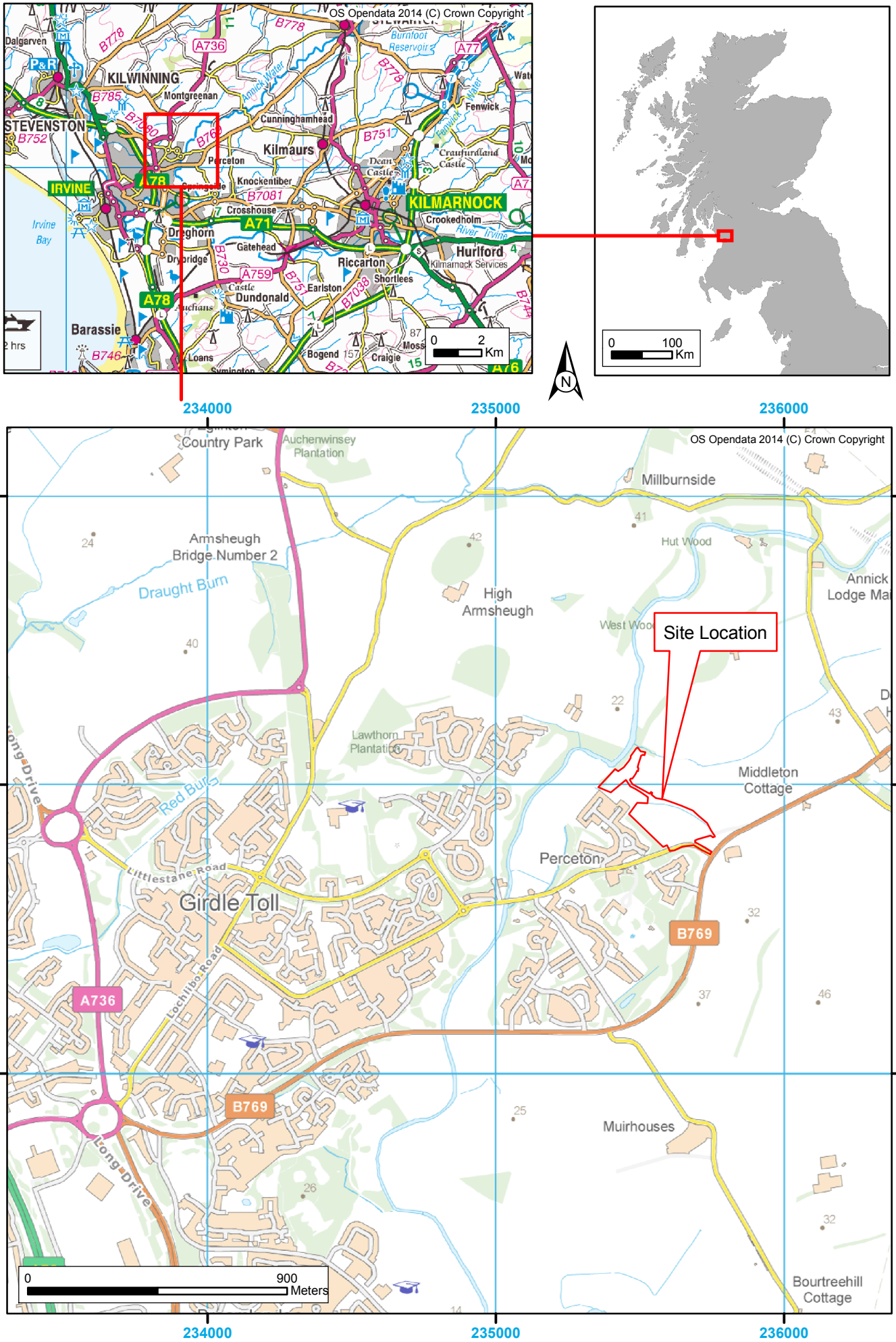
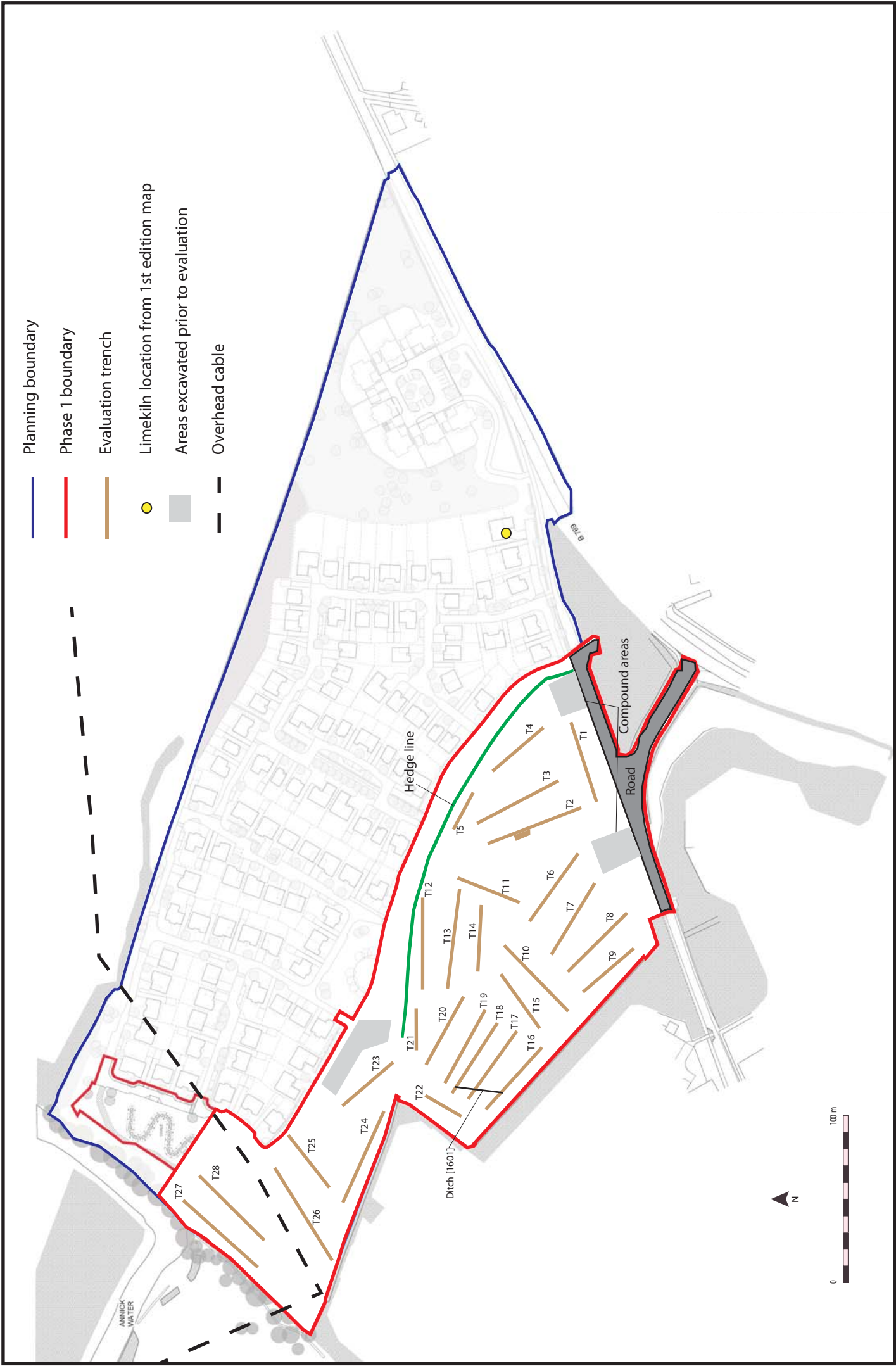


Figure 1: Site Location Plan



- Planning boundary
- Phase 1 boundary
- Evaluation trench
- Limekiln location from 1st edition map
- Areas excavated prior to evaluation
- - - Overhead cable

Figure 2 - Evaluation trench location plan

(Based on a drawing provided by the client)

Perceton, Irvine (Phase 1): Archaeological Evaluation Data Structure Report

Section 2: Appendices

APPENDIX 1: Trench Descriptions

Trench 1

<i>Dimensions</i>	50 m by 2 m
<i>Total Area</i>	100 m ²
<i>Excavated Orientation</i>	NE to SW
<i>Soil Make-up</i>	Topsoil - dark greyish brown clay loam with occasional small stone inclusions and frequent coal flecks and fragments – max depth 0.31 m
<i>Depth of Excavation</i>	0.31 m
<i>Significant Features</i>	None
<i>Other Features</i>	Ceramic tile field drain at 1.4 m to 2.7 m; 6.3 m to 7.4 m; 10.5 m to 11.5 m all aligned NW-SE
<i>Natural Subsoil</i>	Mottled orangey brown sandy clay with frequent small sandstone inclusions
<i>Finds</i>	None

Trench 2

<i>Dimensions</i>	60 m by 2 m plus 3 m by 10 m addition
<i>Total Area</i>	150 m ²
<i>Excavated Orientation</i>	S to N
<i>Soil Make-up</i>	Topsoil - dark greyish brown clay loam with occasional small stone inclusions and frequent coal flecks and fragments – max depth 0.33 m
<i>Depth of Excavation</i>	0.33 m
<i>Significant Features</i>	Furrow recorded as [201]
<i>Other Features</i>	Furrow at 19.5 m to 22 m aligned WNW-ESE; Ceramic tile field drain at 45.5 m to 49 m aligned NW-SE
<i>Natural Subsoil</i>	Mottled orangey brown sandy clay with frequent small sandstone inclusions
<i>Finds</i>	None

Trench 3

<i>Dimensions</i>	55 m by 2 m
<i>Total Area</i>	110 m ²
<i>Excavated Orientation</i>	N to S
<i>Soil Make-up</i>	Topsoil - dark greyish brown clay loam with occasional small stone inclusions and frequent coal flecks and fragments – max depth 0.31 m
<i>Depth of Excavation</i>	0.31 m
<i>Significant Features</i>	Furrows recorded as [301] and [303]
<i>Other Features</i>	Ceramic tile field drain at 10.2 m to 14.9 m; 21.2 m to 25 m; 34 m to 38 m all aligned NW-SE
<i>Natural Subsoil</i>	Mottled orangey brown sandy clay with frequent small sandstone inclusions
<i>Finds</i>	None

Trench 4

<i>Dimensions</i>	35 m by 2 m
<i>Total Area</i>	70 m ²
<i>Excavated Orientation</i>	SE to NW
<i>Soil Make-up</i>	Topsoil - dark greyish brown clay loam with occasional small stone inclusions and frequent coal flecks and fragments – max depth 0.3 m
<i>Depth of Excavation</i>	0.3 m
<i>Significant Features</i>	None
<i>Other Features</i>	Furrow at 22 m to end of trench aligned WNW-ESE
<i>Natural Subsoil</i>	Mottled orangey brown sandy clay with frequent small sandstone inclusions – evidence of plough scarring in some areas
<i>Finds</i>	None

Trench 5

<i>Dimensions</i>	25 m by 2 m
-------------------	-------------

<i>Total Area</i>	50 m ²
<i>Excavated Orientation</i>	ESE to WNW
<i>Soil Make-up</i>	Topsoil - dark greyish brown clay loam with occasional small stone inclusions and frequent coal flecks and fragments – max depth 0.4 m
<i>Depth of Excavation</i>	0.4 m
<i>Significant Features</i>	None
<i>Other Features</i>	Ceramic tile field drain at 2.5 m to 8 m; 19.4 m to 25 m aligned NW-SE
<i>Natural Subsoil</i>	Mottled orangey brown sandy clay with frequent small sandstone inclusions
<i> Finds</i>	None

Trench 6

<i>Dimensions</i>	50 m by 2 m
<i>Total Area</i>	100 m ²
<i>Excavated Orientation</i>	SE to NW
<i>Soil Make-up</i>	Topsoil - dark greyish brown clay loam with occasional small stone inclusions and frequent coal flecks and fragments – max depth 0.33 m
<i>Depth of Excavation</i>	0.33 m
<i>Significant Features</i>	None
<i>Other Features</i>	Ceramic tile field drain at 0,0.45 m to 15 m aligned NW-SE. Furrow at 34 m to 50 m aligned WNW-ESE
<i>Natural Subsoil</i>	Mottled orangey brown sandy clay with frequent small sandstone inclusions
<i> Finds</i>	None

Trench 7

<i>Dimensions</i>	50 m by 2 m
<i>Total Area</i>	100 m ²
<i>Excavated Orientation</i>	SE to NW
<i>Soil Make-up</i>	Topsoil - dark greyish brown clay loam with occasional small stone inclusions and frequent coal flecks and fragments – max depth 0.38 m
<i>Depth of Excavation</i>	0.38 m
<i>Significant Features</i>	None
<i>Other Features</i>	Ceramic tile field drain at 1.5 m to 9.4 m; 35 m to 42.4 m aligned NW-SE
<i>Natural Subsoil</i>	Mottled orangey brown sandy clay with frequent small sandstone inclusions
<i> Finds</i>	None

Trench 8

<i>Dimensions</i>	50 m by 2 m
<i>Total Area</i>	100 m ²
<i>Excavated Orientation</i>	NW to SE
<i>Soil Make-up</i>	Topsoil - dark greyish brown clay loam with occasional small stone inclusions and frequent coal flecks and fragments – max depth 0.37 m
<i>Depth of Excavation</i>	0.37 m
<i>Significant Features</i>	None
<i>Other Features</i>	None
<i>Natural Subsoil</i>	Mottled orangey brown sandy clay with frequent small sandstone inclusions, and a seam of yellowish grey clay
<i> Finds</i>	None

Trench 9

<i>Dimensions</i>	35 m by 2 m
<i>Total Area</i>	100 m ²
<i>Excavated Orientation</i>	SE to NW
<i>Soil Make-up</i>	Topsoil - dark greyish brown clay loam with occasional small stone inclusions and frequent coal flecks and fragments – max depth 0.37 m

<i>Depth of Excavation</i>	0.37 m
<i>Significant Features</i>	None
<i>Other Features</i>	Furrow at 7.2 m to 13.4 m; 24.4 m to 30 m aligned WNW-ESE. Ceramic tile field drain at 15.4 m to 25 m aligned NW-SE
<i>Natural Subsoil</i>	Mottled orangey brown sandy clay with frequent small sandstone inclusions
<i>Finds</i>	None

Trench 10

<i>Dimensions</i>	55 m by 2 m
<i>Total Area</i>	110 m ²
<i>Excavated Orientation</i>	SW to NE
<i>Soil Make-up</i>	Topsoil - dark greyish brown clay loam with occasional small stone inclusions and frequent coal flecks and fragments – max depth 0.36 m
<i>Depth of Excavation</i>	0.36 m
<i>Significant Features</i>	None
<i>Other Features</i>	Furrows at 0 m to 0.9 m; 5.2 m to 6 m; 10.9 m to 11.7 m; 16.5 m to 17.2 m; 2 m to 22.6 m; 28.4 m to 29 m; 34.6 m to 35.1 m; 41.4 m to 42.1 m; 47.9 m to 48.6 m aligned WNW-ESE. Ceramic tile field drain at 2.7 m; 13.9 m; 27 m; 30.4 m; 33.1 m; 39.6 m; 46 m; 52 m aligned NW-SE
<i>Natural Subsoil</i>	Mottled orangey brown sandy clay with frequent small sandstone inclusions
<i>Finds</i>	None

Trench 11

<i>Dimensions</i>	40 m by 2 m
<i>Total Area</i>	80 m ²
<i>Excavated Orientation</i>	WSW to ENE
<i>Soil Make-up</i>	Topsoil - dark greyish brown clay loam with occasional small stone inclusions and frequent coal flecks and fragments – max depth 0.36 m
<i>Depth of Excavation</i>	0.36 m
<i>Significant Features</i>	None
<i>Other Features</i>	Ceramic tile field drain at 0.7 m to 1.6 m; 6 m to 6.8 m; 12.8 m to 13.4 m; 25 m to 25.5 m aligned NW-SE. Furrows at 2.4 m to 2.8 m; 7.6 m to 8.7 m; 15.4 m to 16 m; 23.5 m to 24 m; 31.6 m to 32.2 m aligned WNW-ESE.
<i>Natural Subsoil</i>	Mottled orangey brown sandy clay with frequent small sandstone inclusions
<i>Finds</i>	None

Trench 12

<i>Dimensions</i>	55 m by 2 m
<i>Total Area</i>	110 m ²
<i>Excavated Orientation</i>	ESE to WNW
<i>Soil Make-up</i>	Topsoil - dark greyish brown clay loam with occasional small stone inclusions and frequent coal flecks and fragments – max depth 0.62 m
<i>Depth of Excavation</i>	0.62 m
<i>Significant Features</i>	None
<i>Other Features</i>	Furrows at 0 m to 5.5 m; 13.4 m to 18.9 m; 29.3 m to 33.4 m aligned WNW-ESE. Ceramic tile field drain at 4.5 m to 6.6 m; 18.6 m to 20.2 m; 28.4 m to 30.1 m; 38.5 m to 40.1 m aligned NW-SE
<i>Natural Subsoil</i>	Mottled orangey brown sandy clay with frequent small sandstone inclusions
<i>Finds</i>	None

Trench 13

<i>Dimensions</i>	60 m by 2 m
<i>Total Area</i>	120 m ²
<i>Excavated Orientation</i>	ESE to WNW

<i>Soil Make-up</i>	Topsoil - dark greyish brown clay loam with occasional small stone inclusions and frequent coal flecks and fragments – max depth 0.31 m
<i>Depth of Excavation</i>	0.31 m
<i>Significant Features</i>	None
<i>Other Features</i>	Ceramic tile field drain at 3.5 m to 5.7 m; 20.4 m to 22.1 m; 35.9 m to 38.6 m aligned NW-SE. Furrow at 9.5 m to 19.2 m aligned WNW-ESE
<i>Natural Subsoil</i>	Mottled orangey brown sandy clay with frequent small sandstone inclusions
<i>Finds</i>	None

Trench 14

<i>Dimensions</i>	40 m by 2 m
<i>Total Area</i>	80 m ²
<i>Excavated Orientation</i>	ESE to WNW
<i>Soil Make-up</i>	Topsoil - dark greyish brown clay loam with occasional small stone inclusions and frequent coal flecks and fragments – max depth 0.26 m
<i>Depth of Excavation</i>	0.26 m
<i>Significant Features</i>	None
<i>Other Features</i>	Furrows at 4.7 m to 15.3 m; 26.1 m to 28.2 m aligned WNW to ESE. Ceramic tile field drain at 15 m to 17.8 m; 36 m to 37.4 m aligned NW-SE
<i>Natural Subsoil</i>	Mottled orangey brown sandy clay with frequent small sandstone inclusions
<i>Finds</i>	None

Trench 15

<i>Dimensions</i>	40 m by 2 m
<i>Total Area</i>	80 m ²
<i>Excavated Orientation</i>	SW to NE
<i>Soil Make-up</i>	Topsoil - dark greyish brown clay loam with occasional small stone inclusions and frequent coal flecks and fragments – max depth 0.34 m
<i>Depth of Excavation</i>	0.34 m
<i>Significant Features</i>	None
<i>Other Features</i>	Furrows at 2.3 m to 3.4 m; 9 m to 10.1 m; 16.2 m to 16.9 m; 22.3 m to 22.9 m; 28.1 m to 29 m; 33.8 m to 34.7 m; 38.3 m to 39.2m aligned WNW-ESE.
<i>Natural Subsoil</i>	Mottled orangey brown sandy clay with frequent small sandstone inclusions with a seam of yellowish grey clay at 25 m to 27 m.
<i>Finds</i>	None

Trench 16

<i>Dimensions</i>	50 m by 2 m
<i>Total Area</i>	100 m ²
<i>Excavated Orientation</i>	SE to NW
<i>Soil Make-up</i>	Topsoil - dark greyish brown clay loam with occasional small stone inclusions and frequent coal flecks and fragments – max depth 0.31 m
<i>Depth of Excavation</i>	0.31 m
<i>Significant Features</i>	Field boundary ditch [1601]
<i>Other Features</i>	Ceramic tile field drain at 0, 1 m to 50 m aligned NW-SE. Furrows at 20 m to 21.3 m; 27.6 to 29.5 m aligned WNW-ESE. Furrow at 39 m to 40.1 m aligned WSW-ESE (See [1701]).
<i>Natural Subsoil</i>	Mottled orangey brown sandy clay with frequent small sandstone inclusions. Change to orange and brown clayey sand and areas of gravel with degraded stone in places.
<i>Finds</i>	None

Trench 17

<i>Dimensions</i>	50 m by 2 m
<i>Total Area</i>	100 m ²
<i>Excavated Orientation</i>	NW to SE

<i>Soil Make-up</i>	Topsoil - dark greyish brown clay loam with occasional small stone inclusions and frequent coal flecks and fragments – max depth 0.31 m
<i>Depth of Excavation</i>	0.31 m
<i>Significant Features</i>	Furrow recorded as [1701]. Continuation of field boundary ditch [1601]
<i>Other Features</i>	Ceramic tile field drain at 13 m to 27.2 m; 26 m to 40.2 m aligned NNW-SSE
<i>Natural Subsoil</i>	Mottled orangey brown sandy clay with frequent small sandstone inclusions. Change to orange and brown clayey sand and areas of gravel with degraded stone in places.
<i>Finds</i>	None

Trench 18

<i>Dimensions</i>	50 m by 2 m
<i>Total Area</i>	100 m ²
<i>Excavated Orientation</i>	SE to NW
<i>Soil Make-up</i>	Topsoil - dark greyish brown clay loam with occasional small stone inclusions and frequent coal flecks and fragments – max depth 0.31 m
<i>Depth of Excavation</i>	0.31 m
<i>Significant Features</i>	Continuation of field boundary ditch [1601].
<i>Other Features</i>	Ceramic tile field drain at 2.2 m to 10 m; 9.5 m to 18 m aligned NW-SE. Furrow at 28.5 m to 32 m aligned WNW-ESE.
<i>Natural Subsoil</i>	Mottled orangey brown sandy clay with frequent small sandstone inclusions
<i>Finds</i>	None

Trench 19

<i>Dimensions</i>	55 m by 2 m
<i>Total Area</i>	110 m ²
<i>Excavated Orientation</i>	NW to SE
<i>Soil Make-up</i>	Topsoil - dark greyish brown clay loam with occasional small stone inclusions and frequent coal flecks and fragments – max depth 0.5 m
<i>Depth of Excavation</i>	0.5 m
<i>Significant Features</i>	None
<i>Other Features</i>	Ceramic tile field drain at 0, 0.85 m to 5.3 m; 16.4 m to 23 m; 28.2 m to 35.3 m; 34.5 m to 41.3 m aligned NW-SE
<i>Natural Subsoil</i>	Mottled orangey brown sandy clay with frequent small sandstone inclusions
<i>Finds</i>	None

Trench 20

<i>Dimensions</i>	45 m by 2 m
<i>Total Area</i>	90 m ²
<i>Excavated Orientation</i>	SE to NW
<i>Soil Make-up</i>	Topsoil - dark greyish brown clay loam with occasional small stone inclusions and frequent coal flecks and fragments – max depth 0.33 m
<i>Depth of Excavation</i>	0.33 m
<i>Significant Features</i>	None
<i>Other Features</i>	Furrow at 0 m to 9 m aligned WNW-ESE. Ceramic tile field drain at 23.8 m to 29 m; 34 m to 40.8 m aligned NW-SE
<i>Natural Subsoil</i>	Mottled orangey brown sandy clay with frequent small sandstone inclusions
<i>Finds</i>	None

Trench 21

<i>Dimensions</i>	25 m by 2 m
<i>Total Area</i>	50 m ²
<i>Excavated Orientation</i>	ESE to WNW
<i>Soil Make-up</i>	Topsoil - dark greyish brown clay loam with occasional small stone inclusions and frequent coal flecks and fragments – max depth 0.4 m

<i>Depth of Excavation</i>	0.4 m
<i>Significant Features</i>	None
<i>Other Features</i>	Ceramic tile field drain at 3.5 m to 5.2 m; 5.3 m to 6.7 m; 10.1 m to 11.9 m; 17 m to 18.8m aligned NW-SE
<i>Natural Subsoil</i>	Mottled orangey brown sandy clay with frequent small sandstone inclusions
<i>Findings</i>	None

Trench 22

<i>Dimensions</i>	25 m by 2 m
<i>Total Area</i>	50 m ²
<i>Excavated Orientation</i>	NE to SW
<i>Soil Make-up</i>	Topsoil - dark greyish brown clay loam with occasional small stone inclusions and frequent coal flecks and fragments – max depth 0.33 m
<i>Depth of Excavation</i>	0.33 m
<i>Significant Features</i>	None
<i>Other Features</i>	Ceramic tile field drain at 10 m aligned NW-SE
<i>Natural Subsoil</i>	Greyish brown gravel to 20 m then mottled orangey brown sandy clay with frequent small sandstone inclusions
<i>Findings</i>	None

Trench 23

<i>Dimensions</i>	30 m by 2.2 m
<i>Total Area</i>	66 m ²
<i>Excavated Orientation</i>	SE to NW
<i>Soil Make-up</i>	Topsoil - dark greyish brown clay loam with occasional small stone inclusions and frequent coal flecks and fragments – max depth 0.41 m
<i>Depth of Excavation</i>	0.41 m
<i>Significant Features</i>	None
<i>Other Features</i>	None
<i>Natural Subsoil</i>	Mottled orangey brown sandy clay with frequent small sandstone inclusions
<i>Findings</i>	None

Trench 24

<i>Dimensions</i>	60 m by 2.2 m
<i>Total Area</i>	132 m ²
<i>Excavated Orientation</i>	ESE to WNW
<i>Soil Make-up</i>	Topsoil - dark greyish brown clay loam with occasional small stone inclusions and frequent coal flecks and fragments – max depth 0.42 m
<i>Depth of Excavation</i>	0.42 m
<i>Significant Features</i>	None
<i>Other Features</i>	Ceramic tile drain at 25 m to end of trench aligned ESE-WNW
<i>Natural Subsoil</i>	Mottled orangey brown sandy clay with frequent small sandstone inclusions
<i>Findings</i>	None

Trench 25

<i>Dimensions</i>	65 m by 2.2 m
<i>Total Area</i>	143 m ²
<i>Excavated Orientation</i>	SW to NE
<i>Soil Make-up</i>	Topsoil - dark greyish brown clay loam with occasional small stone inclusions and frequent coal flecks and fragments – max depth 0.43 m
<i>Depth of Excavation</i>	0.43 m
<i>Significant Features</i>	None
<i>Other Features</i>	Ceramic tile drain at 1.1 m to 2.4 m; 23.7 m to 25.6 m; 38.2 m to 39.8 m aligned ESE-WNW. Plastic duct at 4.1 m to 5.7 m aligned ESE-WNW.

Natural Subsoil Mottled orangey brown sandy clay with frequent small sandstone inclusions to 47 m then orange sand and gravel.

Finds None

Trench 26

Dimensions 40 m by 2.2 m

Total Area 88 m²

Excavated Orientation NE to SW

Soil Make-up Topsoil - dark greyish brown clay loam with occasional small stone inclusions and frequent coal flecks and fragments – max depth 0.4 m

Depth of Excavation 0.4 m

Significant Features None

Other Features Ceramic tile drain at 4.7 m to 6.1 m; 12.1 m to 13.2 m; 25.7 m to 26.8 m aligned ESE-WNW

Natural Subsoil Mottled orangey brown sandy clay with frequent small sandstone inclusions

Finds None

Trench 27

Dimensions 60 m by 2.2 m

Total Area 132 m²

Excavated Orientation NE to SW

Soil Make-up Topsoil - dark greyish brown clay loam with occasional small stone inclusions and frequent coal flecks and fragments – max depth 0.4 m

Depth of Excavation 0.4 m

Significant Features None

Other Features Plastic duct drain at 13 m to 13.7 m aligned ESE-WNW. Furrows at 19.1 m to 20.4 m; 27.9 m to 29.6 m; 37.5 m to 39 m aligned ESE-WNW.

Natural Subsoil Mottled orangey brown sandy clay with frequent small sandstone inclusions

Finds None

Trench 28

Dimensions 55 m by 2.2 m

Total Area 121 m²

Excavated Orientation SW to NE

Soil Make-up Topsoil - dark greyish brown clay loam with occasional small stone inclusions and frequent coal flecks and fragments – max depth 0.33 m

Depth of Excavation 0.33 m

Significant Features None

Other Features Ceramic tile drain at 11.4 m to 13 m; 42.9 m to 44.4 m aligned ESE-WNW; Rubble drain at 46.6 m to 48 m aligned ESE-WNW

Natural Subsoil Mottled orangey brown sandy clay with frequent small sandstone inclusions

Finds None

APPENDIX 2: Context Register

Context No.	Area	Description and Interpretation
201	Tr.2	Linear cut aligned WNW-ESE measuring 3.6 m wide by 0.27 m deep and filled by deposit [202]. Very gently sloping sides to a concave base. Post medieval furrow
202	Tr.2	Dark brown sandy clay loam with patches of coal and fired clay fragments measuring 3.6 m wide by 0.27 m. Truncated by modern ceramic field drain aligned NW-SE but no cut for the pipe was visible. Fill of furrow [201]
301	Tr.3	Linear cut aligned WNW-ESE with gradual sloping sides onto a slightly concave base. Measures 2.3 m wide by 0.2 m deep. Post medieval furrow
302	Tr.3	Dark brown sandy clay loam with frequent coal fragments and some stone inclusions. Measures 2.3 m by 0.2 m. Fill of furrow [301]
303	Tr.3	Linear cut aligned WNW-ESE with gradual sloping sides onto a slightly concave base. Measures 2m wide. Approx 5 m from [301] Post medieval furrow
304	Tr.4	Dark brown sandy clay loam with frequent coal fragments and some stone inclusions. Fill of furrow [303]
1601	Tr.16	Linear cut aligned WSW-ENE, visible in Trench 16, 17 and 18. Measures 1.4 m wide by 0.32 m deep with steep sides and a concave base. Post medieval field boundary ditch
1602	Tr.16	Dark brown silty clay with rare coal fleck inclusions measuring 1.4 m by 0.32 m. two fragments of SPMRW within fill

APPENDIX 3: Photographic Record

Digital Photographs

Frame	Description	From	Date
1	Pre-ex shot of trench 1	E	5/8/14
2	Post ex Tr 1	E	5/8/14
3-11	General shots showing compounds and field	Var	5/8/14
12	Post ex Tr 2	NW	5/8/14
13	Post ex Tr 3	NW	5/8/14
14-19	Post ex of slot through possible furrow [301]	Var	5/8/14
20-21	Possible furrow [303]	NNW	5/8/14
22	Post ex Tr 4	NW	5/8/14
23	Post ex Tr 5	SE	5/8/14
24	Post ex Tr 6	NW	5/8/14
25	Post ex Tr 7	NW	5/8/14
26	Post ex Tr 8	NW	5/8/14
27	Post ex Tr 9	SE	5/8/14
28	Post ex Tr 10	E	5/8/14
29	Post ex Tr 11	E	5/8/14
30	Post ex Tr 12	N	5/8/14
31-34	Post ex of [201]	NNW	5/8/14
35	Post ex Tr 13	SE	5/8/14
36	Post ex Tr 14	NW	5/8/14

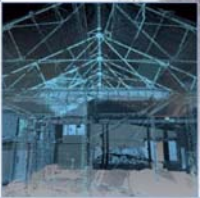
37	Post ex Tr 15	W	5/8/14
38	Post ex Tr 16	SE	5/8/14
39	Field boundary [1601] – SW facing section	SW	5/8/14
40	General shot of [1601]	SE	5/8/14
41	Post ex Tr 17	NW	5/8/14
42	Post ex Tr 19	SE	5/8/14
43	Post ex Tr 20	NW	5/8/14
44	Post ex Tr 21	S	5/8/14
45	Post ex Tr 22	W	5/8/14
46-48	General view of area stripped prior to arrival on site	Var	11/9/14
49	Post ex Tr 23	SE	11/9/14
50	Post ex Tr	ESE	11/9/14
51	Post ex Tr	SW	11/9/14
52	Post ex Tr	SW	11/9/14
53	Post ex Tr	NE	11/9/14
54	Post ex Tr	NE	11/9/14

APPENDIX 4: Drawing Register

Drawing No.	Area	Feature No.	Details	Scale
1	Tr.3	301-303	Plan of features in Trench 3	1:50
2	Tr.3	301	E-facing section of furrow [301]	1:20
3	Tr.16	1601	Plan of trench 16	1:100
4	Tr.16	1601	SW-facing section of field boundary ditch [1601]	1:20
5	Tr.17		Plan of Trench 17	1:100

APPENDIX 5: 'Discovery and Excavation in Scotland' Report

LOCAL AUTHORITY:	North Ayrshire Council
PROJECT TITLE/SITE NAME	Perceton, Irvine
PROJECT CODE:	AOC 22828
PARISH:	Irvine
NAME OF CONTRIBUTOR:	Kevin Paton
NAME OF ORGANISATION:	AOC Archaeology Group
TYPE(S) OF PROJECT:	Archaeological Evaluation
NMRS NO(S)	None
SITE/MONUMENT TYPE(S):	N/A
SIGNIFICANT FINDS:	N/A
NGR (2 letters, 6 figures)	NS 3562 4095
START DATE (this season)	5 th August 2014
END DATE (this season)	11 th September 2014
PREVIOUS WORK (incl. DES ref.)	None
MAIN (NARRATIVE) DESCRIPTION: (May include information from other fields)	<p>An archaeological evaluation was undertaken by AOC Archaeology in relation to a proposed residential development at Perceton, Irvine, North Ayrshire.</p> <p>The evaluation required an 8% trenching sample of the available Phase 1 development area. A total of 28 trenches of varying lengths and alignments were excavated encountering agricultural furrows and a single field boundary ditch aligned WSW-ENE in the NW corner of the site. Out with the agricultural features no significant archaeological features or artefacts were revealed.</p> <p>No further works are considered necessary within the evaluated area.</p>
PROPOSED FUTURE WORK:	None
CAPTION(S) FOR ILLUSTRS:	---
SPONSOR OR FUNDING BODY:	Dawn Homes Ltd.
ADDRESS OF MAIN CONTRIBUTOR:	Edgefield Road Industrial Estate, Loanhead, Midlothian, EH20 9SY
EMAIL ADDRESS:	Kevin.paton@aocarchaeology.com
ARCHIVE LOCATION (intended/deposited)	Archive to be deposited in NMRS



AOC Archaeology Group, Edgefield Industrial Estate, Edgefield Road, Loanhead EH20 9SY
tel: 0131 440 3593 | fax: 0131 440 3422 | e-mail: admin@aocarchaeology.com

www.aocarchaeology.com