

# Archaeological Evaluation on Land at Malleny Park, Currie Rugby Football Club: Evaluation Data Structure Report

AOC Project 22840

Planning Ref No 14/00821/FUL

11<sup>th</sup> August 2014



# Archaeological Evaluation on Land at Malleny Park, Currie Rugby Football Club: Evaluation Data Structure Report

<b>On Behalf of:</b>	<b>Sports Lab Ltd</b> Currie Rugby Football Club Malleny Park Balerno Midlothian EH14
<b>National Grid Reference (NGR):</b>	<b>NT 1650 6670</b>
<b>AOC Project No:</b>	<b>22840</b>
<b>Oasis Entry</b>	<b>1-187160</b>
<b>Prepared by:</b>	<b>Rob Engl</b>
<b>Illustration by:</b>	<b>Jamie Humble</b>
<b>Date of Fieldwork:</b>	<b>9<sup>th</sup> August 2014</b>
<b>Date of Report:</b>	<b>11<sup>th</sup> August 2014</b>

This document has been prepared in accordance with AOC standard operating procedures.

**Author: Rob Engl**

**Date: August 2014**

**Approved by: Martin Cook**

**Date: August 2014**

**Draft/Final Report Stage:**

**Date: August 2014**

**Enquiries to:** AOC Archaeology Group  
Edgefield Industrial Estate  
Edgefield Road  
Loanhead  
EH20 9SY

Tel. 0131 440 3593  
Fax. 0131 440 3422  
e-mail. [admin@aocarchaeology.com](mailto:admin@aocarchaeology.com)



## Contents

	<b>Page</b>
List of illustrations .....	1
List of Plates .....	1
List of appendices .....	1
Abstract.....	2
<b>1 INTRODUCTION .....</b>	<b>3</b>
1.1 Background .....	3
1.2 Location.....	3
1.3 Archaeological background .....	3
<b>2 OBJECTIVES .....</b>	<b>4</b>
<b>3 METHODOLOGY .....</b>	<b>4</b>
<b>4 RESULTS .....</b>	<b>4</b>
<b>5 CONCLUSION.....</b>	<b>5</b>
<b>6 RECOMMENDATIONS .....</b>	<b>5</b>
<b>7 BIBLIOGRAPHY .....</b>	<b>5</b>
<b>APPENDIX 1: Trench Descriptions .....</b>	<b>8</b>
<b>APPENDIX 2: Photographic Record .....</b>	<b>9</b>
<b>APPENDIX 3: ‘Discovery and Excavation in Scotland’ Report.....</b>	<b>10</b>

## List of illustrations

- Figure 1      Site Location  
Figure 2      Trench Location Plan

## List of Plates

- Plate 1      Pre-excavation of area from north-east  
Plate 2      Trench 4 post-excavation from south-east

## List of appendices

- Appendix 1    Trench Descriptions  
Appendix 2    Photographic Record  
Appendix 3    '*Discovery and Excavation in Scotland*' Report

## Abstract

---

This report presents the results of an archaeological evaluation undertaken by AOC Archaeology Group on behalf of Currie Rugby Football Club, on the site of a new training pitch on ground at Malleny Park, Balerno (NGR: NT 1650 6670 centered),

The archaeological evaluation consisted of the machine trenching of 800 m<sup>2</sup>. A total of 1020 m<sup>2</sup> was originally required. However, the presence of live services curtailed the area available for evaluation. In total four trenches were opened over the area of the proposed pitch.

The area had been heavily truncated during the construction of the current playing fields with modern drains spaced at regular one metre intervals.

Neither significant archaeological features nor artefacts were encountered.

# 1 INTRODUCTION

## 1.1 Background

- 1.1.1 AOC Archaeology Group was commissioned by Currie Rugby Football Club to carry out a programme of archaeological works prior to the construction of a new artificial rugby/football with fencing and lighting at their ground in Malleny Park, Balerno (Planning Ref. No. 14/00821/FUL). The development lies within the administrative area of the City of Edinburgh Council, which is advised on archaeological matters by the City of Edinburgh Council Archaeology Service (CECAS). The archaeological works were conducted in accordance with the principals set out in *Scottish Planning Policy* (2014) and *Planning & Archaeology* (2011) and in accordance with City of Edinburgh Council requirements as advised by CECAS.
- 1.1.2 The objective of the archaeological works was to determine the existence of any buried archaeological remains within the development area by means of a programme of trial trenching. A Written Scheme of Investigation (Dunbar 2014) outlining the entire programme of archaeological works was agreed with CECAS in advance of the evaluation being undertaken.

## 1.2 Location

- 1.2.1 The proposed site (NGR: NT 1650 6670 centered) lies due north of the Clubhouse of Currie Rugby Football Club (Figure 1) and is currently used as a playing field. The site is 1.02 ha in area, and is bounded by banks of mature trees on the eastern and south-eastern boundaries with playing fields to the north.

## 1.3 Archaeological background

- 1.3.1 There are no archaeological sites within the proposed development. However, the site lies within the former grounds of Malleny House (NMRS: NT16NE 21). The existing Malleny House was built c.1635, but is thought to incorporate elements of an earlier building. The estate comprises many interesting and contemporary features such as a Doocot (NMRS: NT16NE 21.01), sundial and walled garden (NMRS: NT16NE 21.03), gate piers (NMRS: NT16NE 21.05) and a burial vault/mausoleum (NMRS: NT16NE 21.02).
- 1.3.2 In December 2012 AOC Archaeology undertook an evaluation ahead of the creation of a training pitch to the east of the proposed current development. The archaeological evaluation consisted of the machine trenching of 812 m<sup>2</sup> equating to just over the required 10% evaluation. In total seven trenches were opened and these were focused over the area of the proposed pitch. Neither significant archaeological features nor artefacts were encountered.

## 2 OBJECTIVES

2.1 The objectives of the archaeological evaluation were:

- i) to determine and assess the character, extent, condition, quality, date and significance of any buried archaeological remains within the proposed development area;
- ii) to advise and implement an appropriate form of mitigation, such as, excavation, post-excavation analyses and publication given the infeasibility of preserving the archaeological material *in situ*, should significant archaeological remains be encountered.

## 3 METHODOLOGY

3.1 The archaeological works on 9<sup>th</sup> August 2014. The evaluation trenching was undertaken using an excavator fitted with a 2.0 m wide toothless ditching bucket. The 10% evaluation required the excavation of trenching totalling in excess of 1020 m<sup>2</sup> (Figure 2). However, the presence of several live services reduced the area available for evaluation. Nevertheless, 800 m<sup>2</sup> were excavated. The evaluation was undertaken in dry, clear conditions. Good archaeological visibility was maintained throughout. Trenches were recorded using digital photography and hand measurement and subsequently backfilled and tracked-over by the machine.



Plate 1 – Pre-excavation shot of area from north-east

## 4 RESULTS

4.1 The various data gathered from the evaluation is presented as a series of appendices

- i) Appendix 1 contains the trench summaries
- ii) Appendix 2 contains the photographic register
- iii) Appendix 3 reproduces the '*Discovery and Excavation in Scotland*' entry

- 4.2 The entire site was covered in a thin layer of a well sorted imported top-soil, comprising a red brown clay rich sandy matrix. This topsoil varied in depth from c.0.15 m to 0.25 m and contained very little anthropic material with only very occasional fragments of white glazed ceramics or green bottle glass noticed. The subsoil consisted of a dark brown to orange coloured sandy clay with numerous small to medium sized sub-angular stones.
- 4.3 All four trenches revealed plastic drains covered in pea gravel. These were placed at one metre intervals and were aligned north-west to south-east.
- 4.4 Neither significant archaeological features nor unstratified artefacts were found in any of the trenches. Archaeological material was restricted to occasional white ceramics and modern glass within the topsoil.



**Plate 2 - Trench 4 from north-east**

## **5 CONCLUSION**

- 5.1 No significant archaeological finds or features were encountered. No traces of features associated with Malleny House were revealed. The area was heavily truncated with an imported topsoil was overlying numerous modern plastic drains.
- 5.2 The significant balance of probability is that area is now archaeologically sterile.

## **6 RECOMMENDATIONS**

- 6.1 No further archaeological works are considered necessary. This recommendation will require confirmation by CECAS on behalf of City of Edinburgh Council.

## **7 BIBLIOGRAPHY**

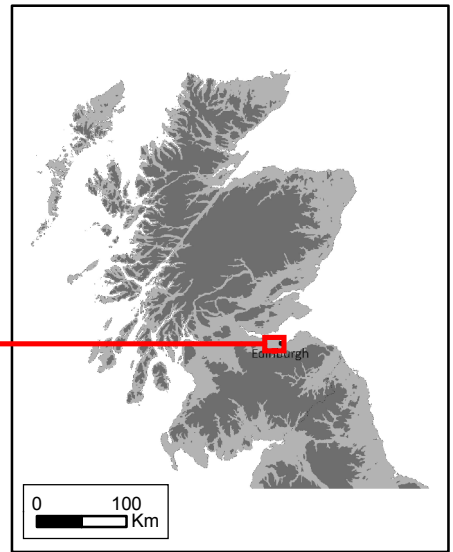
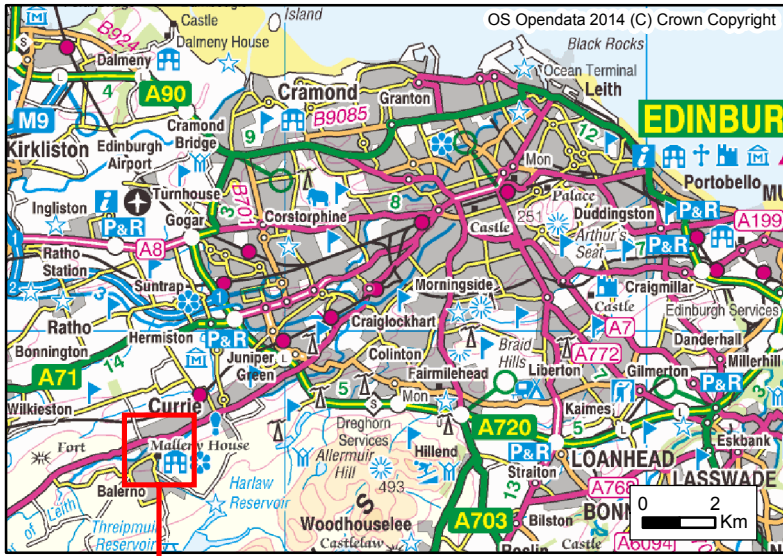


Dunbar L (2012) *Land at Malleny Park, Currie Rugby Football Club Archaeological Evaluation: Data Structure Report*. Unpublished Client Report.

Dunbar L (2014) *Land at Malleny Park, Currie Rugby Football Club Archaeological Evaluation: Written Scheme of Investigation* Unpublished Client Report.

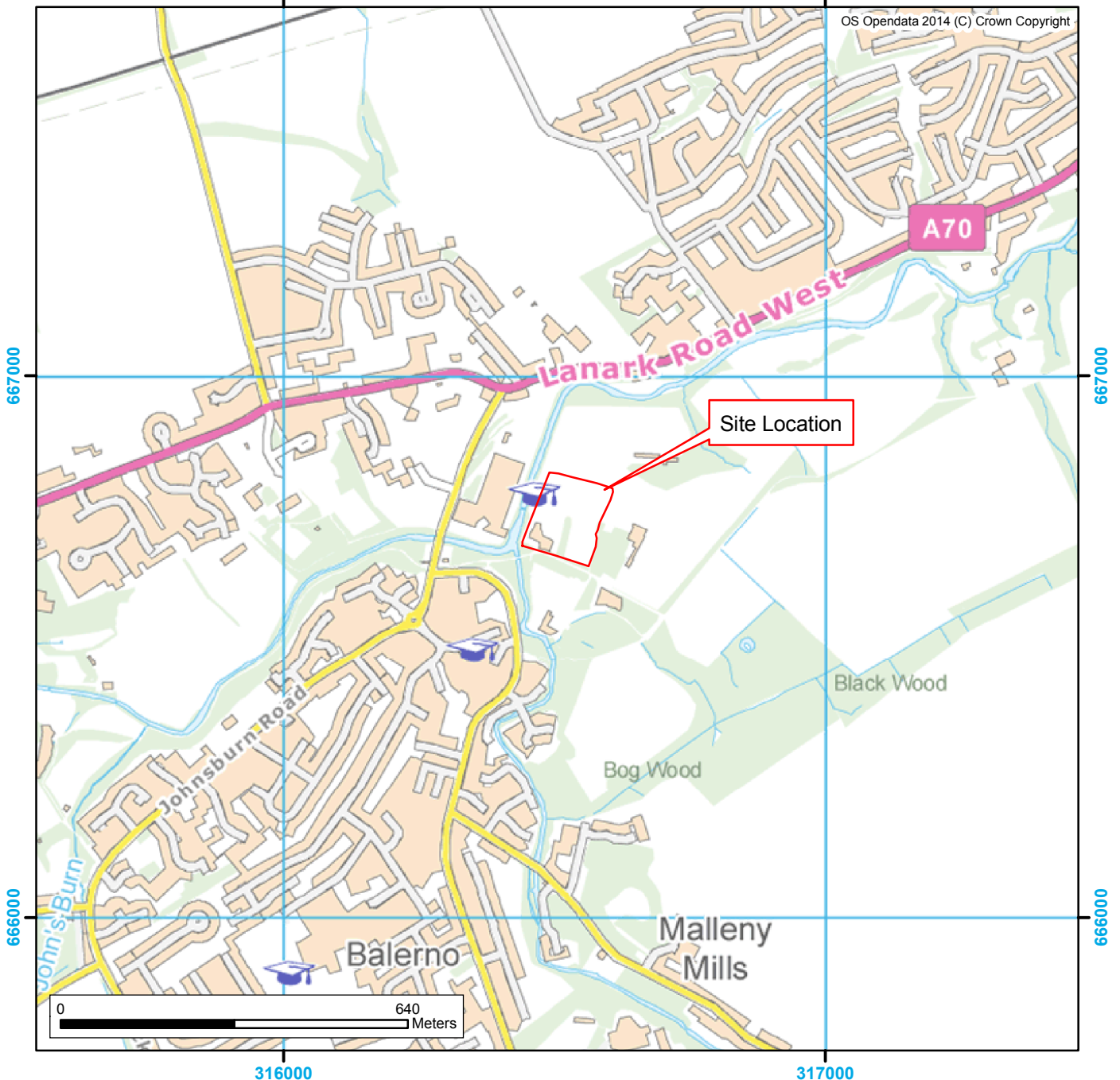
Scottish Government 2014 *Scottish Planning Policy*.

Scottish Government 2011 *PAN 2/2011 Planning and Archaeology*.



316000

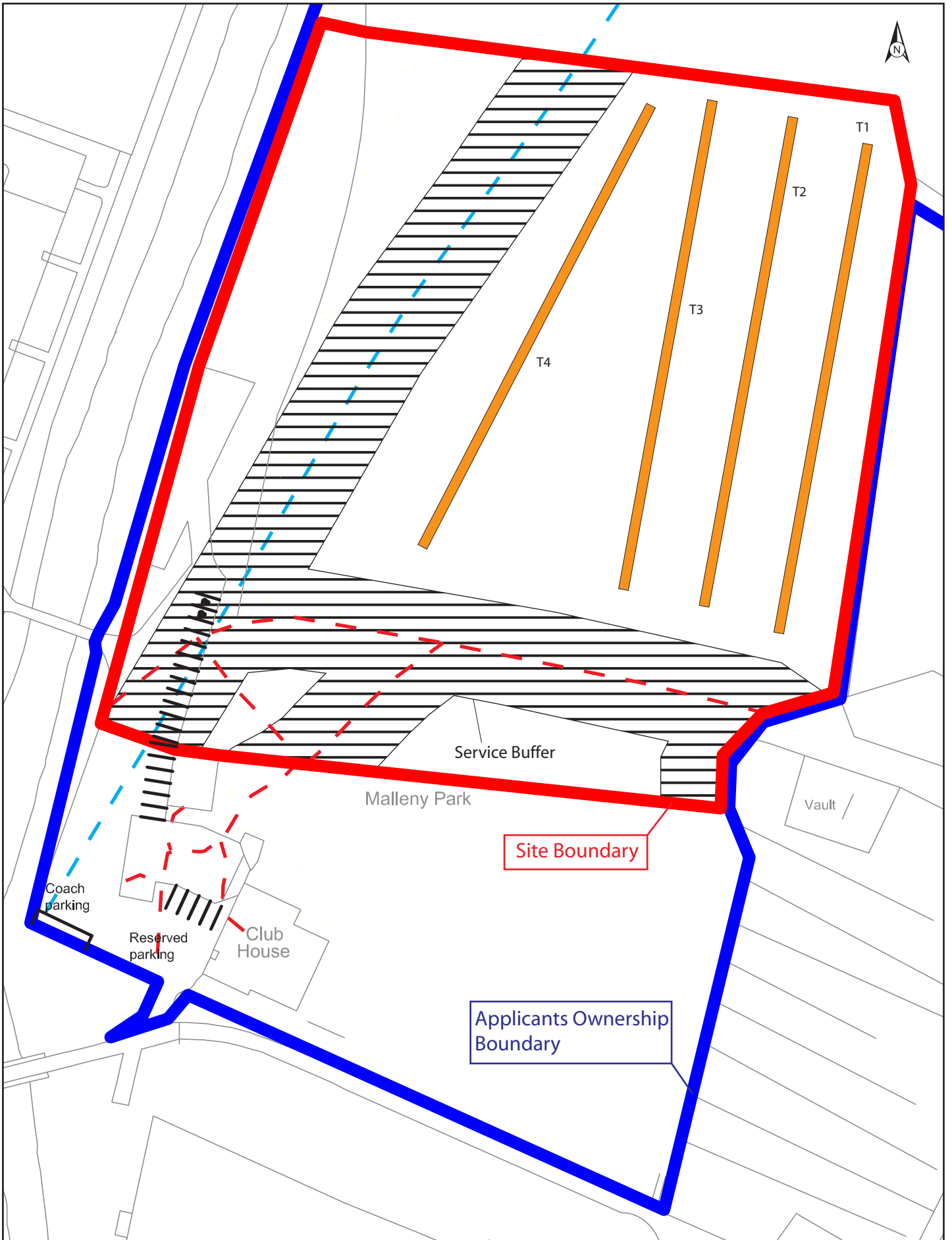
317000



316000

317000

Figure 1: Site Location Plan



Based on a drawing provided by the client

Figure 2: Trench Location Plan

---

**Land at Malleny Park, Currie Rugby Football Club  
Archaeological Evaluation:  
Evaluation Data Structure Report**

**Section 2: Appendices**

## APPENDIX 1: Trench Descriptions

### Trench 1

<i>Dimensions</i>	100 m by 2.0 m
<i>Total Area</i>	200 m <sup>2</sup>
<i>Orientation</i>	N/S
<i>Depth of Topsoil</i>	0.15 m and 0.20 m
<i>Depth of Excavation</i>	Up to 0.25 m
<i>Significant Features</i>	None
<i>Other Features</i>	Plastic drains at 1.0 m intervals NW/SE
<i>Subsoil</i>	Orange/brown clayey sand with occasional sub-angular stones.
<i>Finds</i>	Occasional white ceramics

### Trench 2

<i>Dimensions</i>	100 m by 2.0 m
<i>Total Area</i>	200 m <sup>2</sup>
<i>Orientation</i>	N/S
<i>Depth of Topsoil</i>	0.20 m
<i>Depth of Excavation</i>	0.25 m
<i>Significant Features</i>	None
<i>Other Features</i>	Plastic drains at 1.0 m intervals NW/SE
<i>Subsoil</i>	Orange/brown clayey sand
<i>Finds</i>	None

### Trench 3

<i>Dimensions</i>	100 m by 2.0 m
<i>Total Area</i>	200 m <sup>2</sup>
<i>Orientation</i>	N/S
<i>Depth of Topsoil</i>	0.20 m
<i>Depth of Excavation</i>	0.25 m
<i>Significant Features</i>	None
<i>Other Features</i>	Plastic drains at 1.0 m intervals NW/SE
<i>Subsoil</i>	Orange/brown clayey sand
<i>Finds</i>	Occasional white ceramics and glass

### Trench 4

<i>Dimensions</i>	100 m by 2.0 m
<i>Total Area</i>	200 m <sup>2</sup>
<i>Orientation</i>	N/S
<i>Depth of Topsoil</i>	0.20 m
<i>Depth of Excavation</i>	0.25 m
<i>Significant Features</i>	None
<i>Other Features</i>	Plastic drains at 1.0 m intervals NW/SE
<i>Subsoil</i>	Orange/brown clayey sand
<i>Finds</i>	None

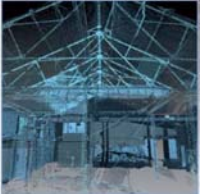
## APPENDIX 2: Photographic Record

### Digital Film 1

Frame	Trench	Description	From
1	-	Registration shot	-
2-3	-	General view area pre-excavation	N
4	Tr.1	Trench 1 Post-Ex	N
5	Tr.2	Trench 2 Post-Ex	S
6	Tr.3	Trench 3 Post Ex	N
7	Tr.4	Trench 4 Post-Ex	NE
8-9	-	Back-filled area	SW

**APPENDIX 3: 'Discovery and Excavation in Scotland' Report**

<b>LOCAL AUTHORITY:</b>	City of Edinburgh Council
<b>PROJECT TITLE/SITE NAME</b>	Land at Malleny Park, Currie Rugby Football Club Archaeological Evaluation
<b>PROJECT CODE:</b>	AOC 22840
<b>PARISH:</b>	Currie
<b>NAME OF CONTRIBUTOR:</b>	Rob Engl
<b>NAME OF ORGANISATION:</b>	AOC Archaeology Group
<b>TYPE(S) OF PROJECT:</b>	Evaluation
<b>NMRS NO(S)</b>	None
<b>SITE/MONUMENT TYPE(S):</b>	None
<b>SIGNIFICANT FINDS:</b>	None
<b>NGR (2 letters, 6 figures)</b>	NT 1670 6676
<b>START DATE (this season)</b>	9/8/2014
<b>END DATE (this season)</b>	9/8/2014
<b>PREVIOUS WORK (incl. DES ref.)</b>	Dunbar L 2012 Land at Malleny Park, Currie Rugby Football Club Archaeological Evaluation DES
<b>MAIN (NARRATIVE) DESCRIPTION:</b> (May include information from other fields)	<p>This report presents the results of an archaeological evaluation undertaken by AOC Archaeology Group on behalf of Currie Rugby Football Club, on the site of a new training pitch on ground at Malleny Park, Balerno (NGR: NT 1650 6670 centered),</p> <p>The archaeological evaluation consisted of the machine trenching of 800 m<sup>2</sup>. A total of 1020 m<sup>2</sup> was originally required. However, the presence of live services curtailed the area available for evaluation. In total four trenches were opened over the area of the proposed pitch.</p> <p>The area had been heavily truncated during the construction of the current playing fields with modern drains spaced at regular one metre intervals.</p> <p>Neither significant archaeological features nor artefacts were encountered.</p>
<b>PROPOSED FUTURE WORK:</b>	None
<b>CAPTION(S) FOR ILLUSTRS:</b>	None
<b>SPONSOR OR FUNDING BODY:</b>	Currie Rugby Football Club
<b>ADDRESS OF MAIN CONTRIBUTOR:</b>	AOC Archaeology Group
<b>EMAIL ADDRESS:</b>	admin@aocarchaeology.com
<b>ARCHIVE LOCATION (intended/deposited)</b>	NMRS



**AOC Archaeology Group**, Edgefield Industrial Estate, Edgefield Road, Loanhead EH20 9SY  
tel: 0131 440 3593 | fax: 0131 440 3422 | e-mail: [admin@aocarchaeology.com](mailto:admin@aocarchaeology.com)

[www.aocarchaeology.com](http://www.aocarchaeology.com)