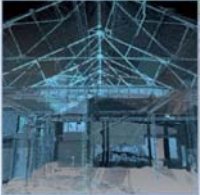


Broomhills Road, Edinburgh: Archaeological Evaluation Data Structure Report

AOC Project 22560

OASIS ID: aocarcha1-189121

29th August 2014



ARCHAEOLOGY

HERITAGE

CONSERVATION

Broomhills Road, Edinburgh: Archaeological Evaluation

Data Structure Report

On Behalf of:	BDW Trading Ltd
National Grid Reference (NGR):	NT 27198 67690
AOC Project No:	22560
Prepared by:	Kevin Paton
Illustration by:	Kevin Paton
Date of Fieldwork:	11th August to 29th August 2014
Date of Report:	29th August 2014

This document has been prepared in accordance with AOC standard operating procedures.

Author: Kevin Paton

Date: 29th August 2014

Approved by: Martin Cook

Date: 29th August 2014

Draft/Final Report Stage: Final

Date: 6th November 2014

Enquiries to: AOC Archaeology Group
Edgefield Industrial Estate
Edgefield Road
Loanhead
EH20 9SY

Tel. 0131 440 3593

Fax. 0131 440 3422

e-mail. admin@aocarchaeology.com



Contents

	Page
List of illustrations	3
List of plates	3
List of appendices	3
Abstract	4
1 INTRODUCTION	5
1.1 Background	5
1.2 Location.....	5
1.3 Archaeological Background.....	5
2 OBJECTIVES	7
3 METHODOLOGY	7
4 RESULTS	7
5. DISCUSSION	9
6 CONCLUSIONS AND RECOMMENDATIONS	9
7 BIBLIOGRAPHY	9
APPENDIX 1: Trench Descriptions	17
APPENDIX 2: Context Register	52
APPENDIX 3: Photographic Register	55
APPENDIX 4: Drawing Register	59
APPENDIX 5: Finds Register	59
APPENDIX 6: Samples Register	59
APPENDIX 7: <i>Discovery and Excavation in Scotland Report</i>	60

List of illustrations

Figure 1	Site Location map
Figure 2	Evaluation trench location plan
Figure 3	Plan of features in trenches surrounding natural hollow
Figure 4	Plan and section of Pit [901] in Trench 9
Figure 5	Section drawings of prehistoric features excavated

List of plates

Plate 1	General view of Trench 118 showing subsoil
Plate 2	SW facing section of ditch [7201]
Plate 3	General view of pit [901]
Plate 4	Rubble drain in Trench 29
Plate 5	NE facing section of ditch [2901]
Plate 6	NE facing section of pit [4703]
Plate 7	Ring ditch [7205]
Plate 8	Ditch [5107] in Trench 51
Plate 9	Pit or large ditch [5305]
Plate 10	Enclosure ditches [5101] and [5103]
Plate 11	Ditches [7603] and [7605]

List of appendices

Appendix 1	Trench Descriptions
Appendix 2	Context Register
Appendix 3	Photographic Register
Appendix 4	Drawing Register
Appendix 5	Finds Register
Appendix 6	Samples Register
Appendix 7	' <i>Discovery and Excavation in Scotland</i> ' Report

Abstract

This report presents the results of an archaeological evaluation on the site of a proposed future development to the east of Broomhills Road, Edinburgh. A 10% evaluation was required of the c. 27 ha site with a total of 12,195 m of trenching excavated across the development area.

Despite the high level of plough scarring across the site, a cluster of shallow features was revealed at the W edge of site behind the cottages on Broomhills Road. The features were mainly curvilinear ditches set on various alignments all to the immediate west of a large natural hollow. At least two ring ditches were revealed, and two of the trenches revealed intercutting features, suggesting various phases of use. Excavation of a percentage of the features did not reveal anything in terms of artefactual evidence but charcoal was found within each feature providing possibilities for use in carbon dating.

Further north in an isolated position a large pit feature was also found, filled with deposits of heat affected soils. Again no artefacts were found but charcoal was evident within the pit deposits.

1 INTRODUCTION

1.1 Background

1.1.1 An archaeological evaluation was undertaken by AOC Archaeology on behalf of BDW Trading Ltd as part of a programme of pre-planning works prior to a possible development to the east of Broomhills Road, Edinburgh. The site lies within the administrative area of the City of Edinburgh Council, which is advised on archaeological matters by the City of Edinburgh Council Archaeology Service (CECAS). The archaeological works were conducted in accordance with the principles set out in *Scottish Planning Policy (2014)* and *Planning and Archaeology 2/2011 (2011)*.

1.2 Location

1.2.1 The proposed development area lies within three fields to the east of Broomhills Road and is immediately south of Frogston Road East (Figure 1; centred on NT 27198 67690). Burdiehouse Village is to the SE and the properties on Burdiehouse Road overlook the site from the east. Burdiehouse burn provides the southern boundary to the site.

1.3 Archaeological Background

1.3.1 The proposed development area was subject to a desk-based assessment which comprised both analysis of the historical records and the cartographic material. Neither, the Royal Commission on Ancient and Historical Monuments of Scotland or the local Sites and Monuments Records list any known sites as lying within the development area.

1.3.2 *Prehistoric and Roman (10,000BC-AD410)*

1.3.2.1 While no known prehistoric or Roman remains or artefacts have been confirmed on the proposed development site itself, antiquarian sources cite a range of either prehistoric or potentially prehistoric sites and artefacts within the vicinity. Although some of the locations are approximate, these sites appear to be focussed to the west and northwest of the proposed development, suggesting concentration of prehistoric activity within the vicinity of Mortonhall. Prehistoric remains and artefacts reported at Mortonhall include a standing stone, a Celtic Brigantine scabbard of the late 1st Century AD, tumuli and 'the two Kaimes in which there have been various fortifications' (Whyte 1792).

1.3.2.2 Although undated a series of cropmarks identified through aerial photographs could potentially be prehistoric. The NMRS contains no details of a possible enclosure reported at Muirhouse and consequently it is not therefore possible to accurately interpret or date this feature.

1.3.3 *Early Historic (AD410 –AD1100)*

1.3.3.1 An Anglo-Saxon disc headed pin, was recovered by metal detector to the southwest of the proposed development in 2005.

1.3.4 *Medieval (AD1100 - AD1500)*

1.3.4.1 A fragment of a free-standing stone cross was recovered from a rockery within the garden of a house at Liberton in 1893. The location of this findspot is now lost and the NMRS is only able to locate it to the nearest 1km grid square.

- 1.3.4.2 St Catherine's balm well, extruding a black tarry substance derived from the underlying shale oils survives to the north of the proposed development. Although the Category B Listed well house is post-medieval, the origins of the well go back further, the first references to it relating to Queen Margaret (AD1045-93). In reality, curative associations attached to geological oddities such as this can go back much further, potentially into prehistory. Waters from the well were reportedly used to treat eczema as late as 1910. A chapel stood close to the well although no trace of it survives above ground.
- 1.3.4.3 Although the current Mortonhall dates to 1769 the estate itself is medieval, being granted by James III to Oliver Sinclair of Roslin in November 1486. Writing in 1792 Whyte notes '*a small eminence or rising ground*' near the present house which '*in earlier times... had been a moated stronghold with a drawbridge*' (Whyte 1792). Nothing now survives of this earlier castle.
- 1.3.5 *Post-medieval (AD1500-1900)*
- 1.3.5.1 The line of a water culvert is shown extending from SSW to NNE across the extreme eastern edge of the development area on the First Edition 6 inch Ordnance Survey of 1855. The culvert formed part of a 15.3km aqueduct, known further north as the Crawley Tunnel, built to carry water onto the Royal Mile from the Glencorse Reservoir built in the Pentlands in 1822. However whilst the line of the aqueduct is clearly visible on the surface immediately southeast of the proposed development as it approaches the Burdiehouse Burn, after crossing the Burn on a distinctive stone bridge surmounted by an earthen bank, the line of the culvert is apparently truncated by a modern builders yard which cuts the bank. The conduit cannot be detected at ground level within the proposed development site and its survival is consequently uncertain.
- 1.3.5.2 Antiquarian sources record the site of Broomhill House to the southwest of the proposed development, within the fields to the north of the bypass. Writing in 1792 Whyte noted that '*South-east from Morton are the ruins of the house of Brownhill, once a place of strength. It is situated in a morass; it was surrounded by water, and the access to it was only by a drawbridge*' (Whyte 1792). Later sources cite some uncertainty about whether Broomhill House and Straiton Hall were separate properties.
- 1.3.5.3 A metal detecting survey undertaken on the site of a supposed Cromwellian Army Encampment to the west of the proposed development recovered a number of potentially 17th century artefacts, although none could be definitively associated with Cromwellian troops.
- 1.3.5.4 Mortonhall House and its associated gardens, structures and policies lie behind tree belts to the northwest of the proposed development. Constructed around 1769 and altered in the 1830's Mortonhall house is a large classical villa. The associated burial ground, terraces and fountain statue plinth are included within the house's Category A listing, whilst the walled garden is Category C listed. The stable court and granary which are contemporary with the house are Category B listed, whilst the later kennels, factor's house and icehouse are Category C listed.
- 1.3.5.5 Two undesignated post medieval quarries are recorded at Burdiehouse, the first lay considerably to the east of the A701 and is recorded on the 2nd Edition Ordnance Survey Six

inch of 1895. The second on the eastern edge of the proposed development site is recorded as a 'Gravel Pit' on the 1st Edition Ordnance Survey Six inch of 1855.

1.3.6 Modern (AD1900-present)

1.3.6.1 Mortonhall Crematorium and Remembrance Chapel lies north of the proposed development on the southern bank of the Stenhouse Burn. Dating from 1967, the complex's Category A Listed is derived from the quality of its modernist architecture and the fame of its creator, the renowned Edinburgh Architect Sir Basil Spence. The unrelated 1, 3 and 4 Howdenhall Road, dating from 1934, at the start of Spence's career, is Category B Listed. An undesignated public cemetery lies to the west of the Crematorium.

1.3.6.2 The NMRS records a range of modern sites within 1km of the proposed development including World War II sites, the Straiton Transformer Station, a poultry house, a police call box, the Burdiehouse Primary School, the Straiton Mains Retail Park, contemporary public art as well as three demolished tower blocks.

1.3.6.3 A ditch encountered during a watching brief to the northwest of the proposed development contained 19th or 20th century pottery within its basal fill, suggesting it is modern in date.

2 OBJECTIVES

2.1 The objective of the archaeological works were:

- i. to determine the character, extent, condition, quality, date and significance of any sub-surface archaeological remains within the development area.
- ii. should significant archaeological deposits be discovered, to liaise with the client and CECAS in preparing a mitigation strategy compliant with *Scottish Planning Policy* (2010) and *Planning and Archaeology 2/2011* (2011).

3 METHODOLOGY

3.1 The evaluation was undertaken by two 22 tonne excavators with 2.2 m wide bladed ditching buckets. Excavation was undertaken in shallow units/spits until the first significant archaeological horizon or natural subsoil was reached. All machine excavation was supervised by an experienced field archaeologist and according to AOC Archaeology Group's standard operating procedures, and as per the methodology within the *Written Scheme of Investigation* (AOC 2014). The trenches were backfilled on completion of the evaluation.

4 RESULTS

4.1 The weather during the evaluation was mainly fair allowing for good archaeological visibility. In total 12,195 linear metres of trenching was excavated, placed throughout the three fields that form the development area.

- 4.2 Topsoil within the development area consisted of 0.3 m to 0.4 m of dark grey clay loam that had the remains of a harvested crop within it. A number of white ceramic, late post medieval ceramics and glass as well as modern rubbish were found within the topsoil. Throughout the majority of the fields the natural subsoil was a very compact mottled orange and brown sandy clay with abundant large stone inclusions (Plate 1). Within two large natural hollows the subsoil was a compact purple boulder clay with areas of bedrock in places. Also, two areas containing orange sand and gravels were encountered: one to the immediate west of a natural hollow and the other along the far eastern edge of the site.
- 4.3 *Features of unknown provenance*
- 4.3.1 Two similar ditch features [7201] and [7401], aligned NE-SW and NW-SE respectively were revealed at the W edge of the development area in Trenches 72 and 74 (Figure 3; Plate 2). The ditches measured 1.15 m and 1.45 m wide respectively and were both filled by a greyish brown sandy clay with rare coal flecks. The coal flecks within the fill indicate a probable post medieval date but the alignment and position of the ditches make them difficult to interpret as field boundaries or furrows. Furthermore, the fact that they do not appear in the trenches to the N or S creates further interpretive issues.
- 4.3.2 Another feature revealed in Trench 9 that was isolated from all the other features on site was a large pit [901], filled by deposits [902], [903] and [904] (Figure 4; Plate 3). The pit measured 5.65 m by 3.75 m by 0.26 m and the deposits filling it showed signs of being heat affected and contained some charcoal flecks throughout.
- 4.4 *Post-medieval and modern features*
- 4.4.1 An abundance of agricultural drains in the form of rubble and ceramic tile drains were encountered in almost all trenches (Plate 4). Furthermore, a few furrows were revealed in some areas that had not been ploughed as deeply. The furrows were aligned mainly N-S in Areas B and E, with the alignment changing to NW-SE in Area C. This change in alignment may indicate a former field system, further evidenced by the post medieval ditch that was encountered in Trenches 29, 31, and 35 (See Figure 2).
- 4.4.2 This ditch was aligned N-S with steep sides and a concave base, excavated through the very compact sandy clay natural (Plate 5). It varied in width between 0.96 m and 1.3 m wide and was 0.31 m deep where excavated.
- 4.5 *Possible Prehistoric features*
- 4.5.1 Situated within the sand and gravels to the immediate west of a natural hollow, a large number of probable prehistoric features were encountered (Figure 3). The majority of the features were linear ditches ([4701], [4901], [4903], [5101], [5103], [5105], [5107], [5109], [5111], [5113], [5301], [5303], [5305], [5310], [7203], [7205], [7207], [7209], [7211], [7601], [7603], [7605], [7607], and [7609]) with two small pits [4703] and [4705].
- 4.5.2 The two pits were situated within a few metres of each other, with [4703] measuring 0.3 m diameter and by 0.12 m deep (Plate 6). The fill of both pits contained an abundance of charcoal, and given the close proximity to ditch terminal [4701] may represent internal features of a round house. Another round house could be interpreted from ditches [4901], [4903] and [7205] (Plate 7), measuring approximately 10 m diameter. The internal area of

the round house would be located under the current field boundary, with other ditches noted in Trench 72 indicating further houses in these areas.

- 4.5.3 Further north and located in Trenches 51, 53 and 76 were further curvilinear ditches and ditch terminals indicating further potential settlement areas (Plate 8&9). Furthermore, a possible double ditch enclosure formed by [5101], [5103], [5301], and [5303] may surround the northern half of the settlement area (Plate 10). This potential enclosed settlement also shows indications of at least two phases as some of the ditch features, e.g. [7603] and [7605] were cutting each other (Plate 11).

5. DISCUSSION

- 5.1 The majority of the proposed development area is sterile of archaeological features. However, the evaluation indicated that archaeological features are present within the western fragment of the area. The probable prehistoric features exist within an area of sands and gravels to the immediate west of the large natural hollow. The identified clusters of pit features and linear ditches are suggestive of a later prehistoric or possibly early historic settlement. The other features identified relate to later post-medieval and modern agricultural field systems. This provides an opportunity to study changing patterns of land use over a wide chronological period.

6 CONCLUSIONS AND RECOMMENDATIONS

- 6.1 Given the archaeological features and finds recovered during the evaluation, it is recommended that a mitigation strategy be prepared compliant with SPP 23 and *Scottish Planning Policy* (2014). In line with current planning policy the preservation *in situ* of the archaeological material is the preferred option. However, it is not possible that the archaeological features found can be left in-situ so a further programme of archaeological mitigation works (*preservation by record*) comprising excavation fieldwork and any necessary post-excavation works will be required. The full scope and scale of these works would be defined by City of Edinburgh Council, with the detailed methodology for their undertaking set out in further Written Schemes of Investigation.
- 6.2 In addition, the most westerly field was not available for investigation and will require work in the future.

7 BIBLIOGRAPHY

AOC Archaeology Group 2014 *Frogston Road East, City of Edinburgh: Archaeological Works Written Scheme of Investigation*, Unpublished Client Report

Scottish Government 2014 *Scottish Planning Policy* (2014)

Scottish Government 2011 PAN 2/2011 Planning & Archaeology



Plate 1 - General view of Trench 118 showing subsoil



Plate 2 - SW facing section of ditch [7201]



Plate 3 - General view of pit [901]



Plate 4 - Rubble drain in Trench 29



Plate 5 - NE facing section of ditch [2901]



Plate 6 - NE facing section of Pit [4703]



Plate 7 - Ring ditch [7205]



Plate 8 - Ditch [5107] in Trench 51



Plate 9 - Pit or large ditch [5305]



Plate 10 - Enclosure ditches [5101] and [5103]



Plate 11 - Ditches [7603] and [7605]

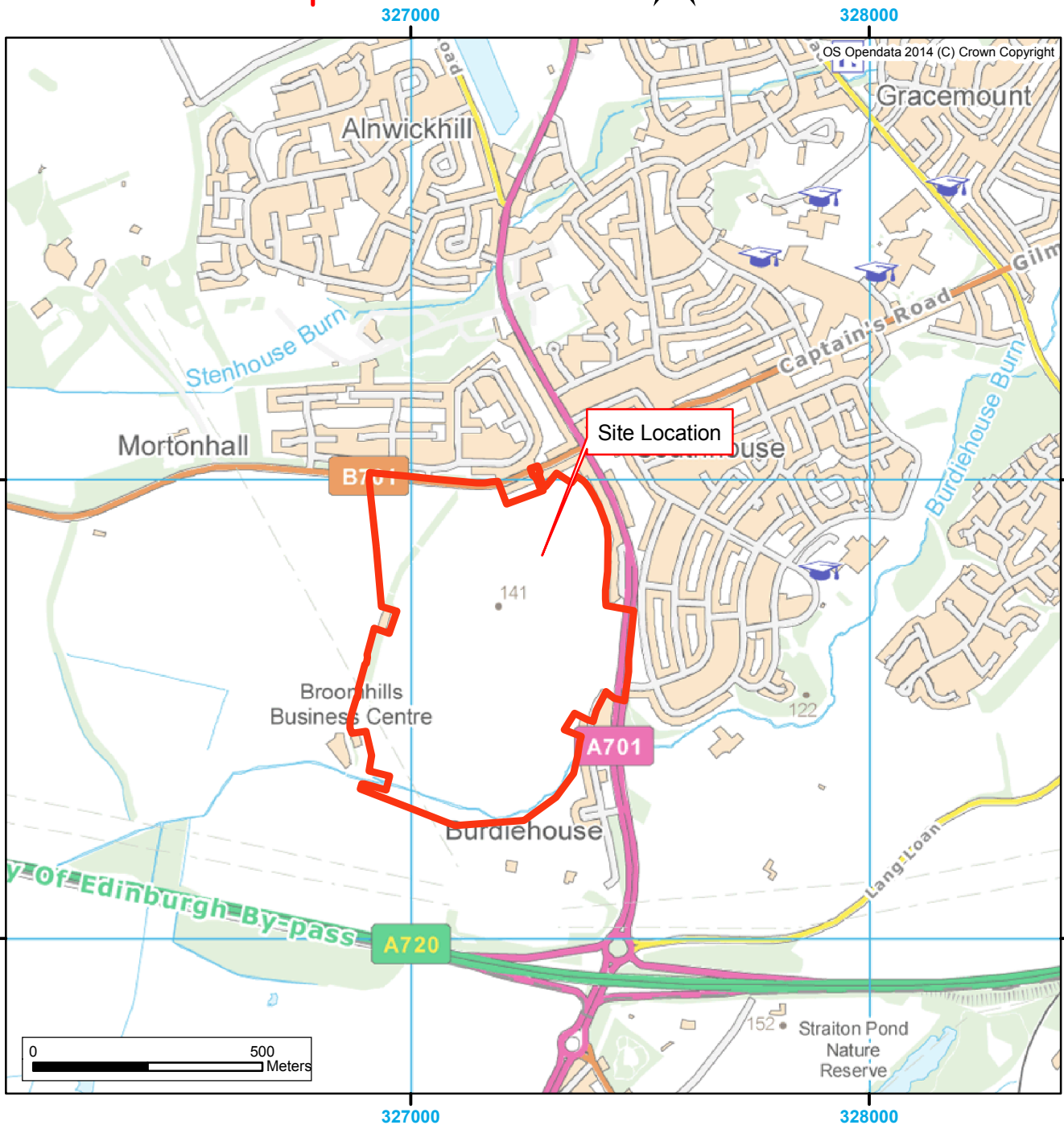
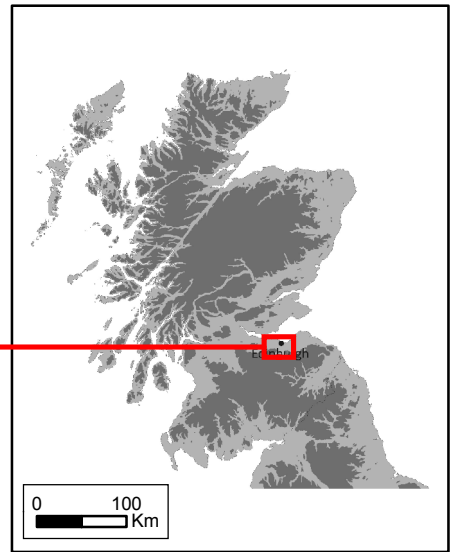
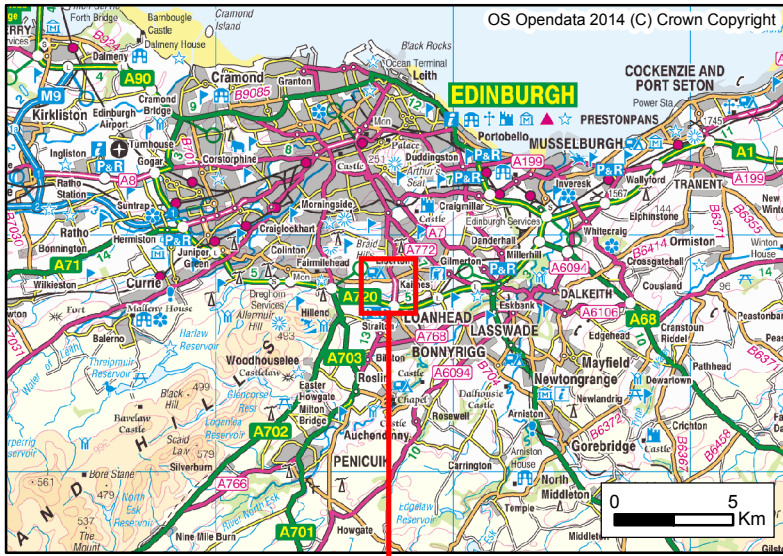
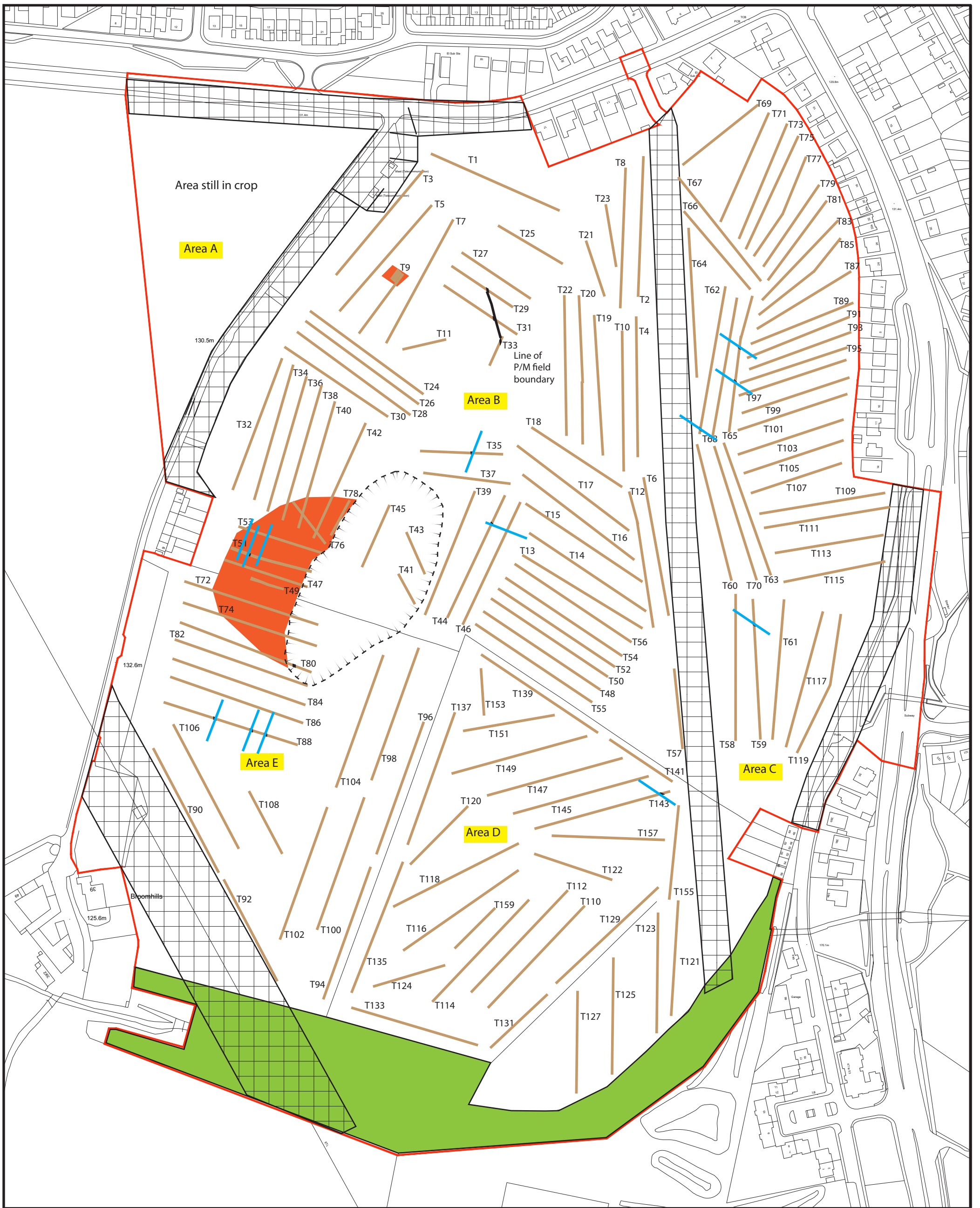


Figure 1: Site Location Plan



- Ecology buffer around burn
- Areas of prehistoric activity
- Electrical services buffer
- Projected line of furrows
- Evaluation Trench



Figure 2 - Evaluation trench location plan

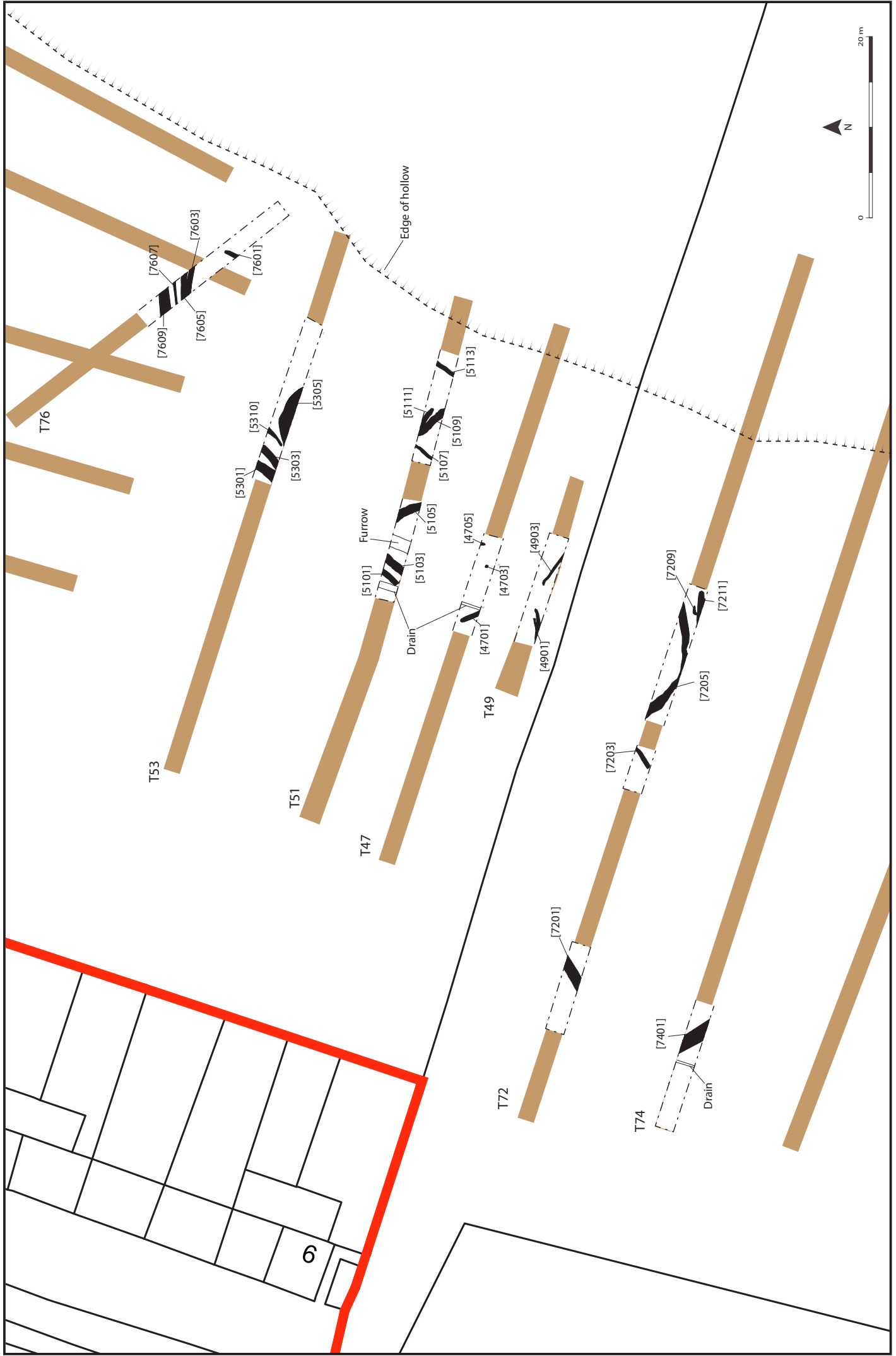


Figure 3 - Plan of features in trenches surrounding natural hollow

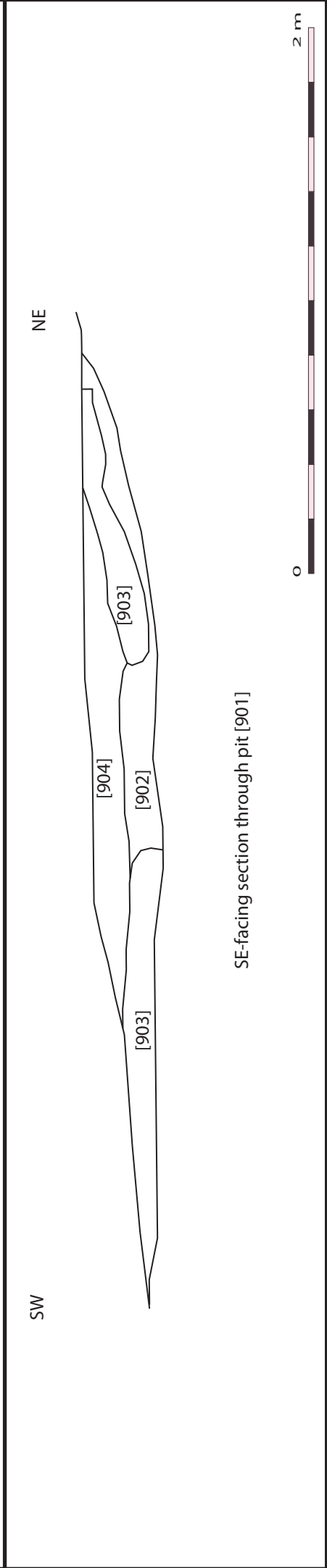
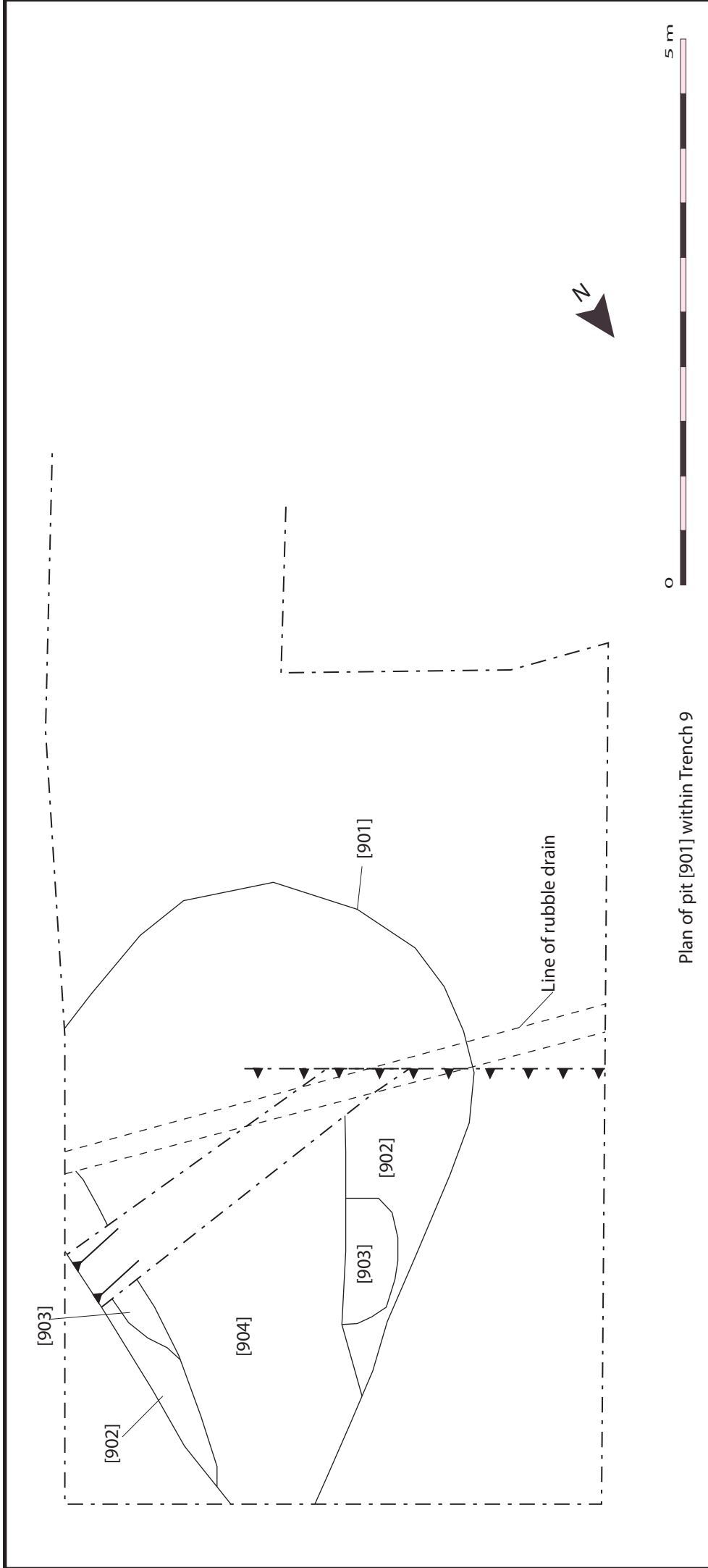


Figure 4 - Plan and section of Pit [901] in Trench 9

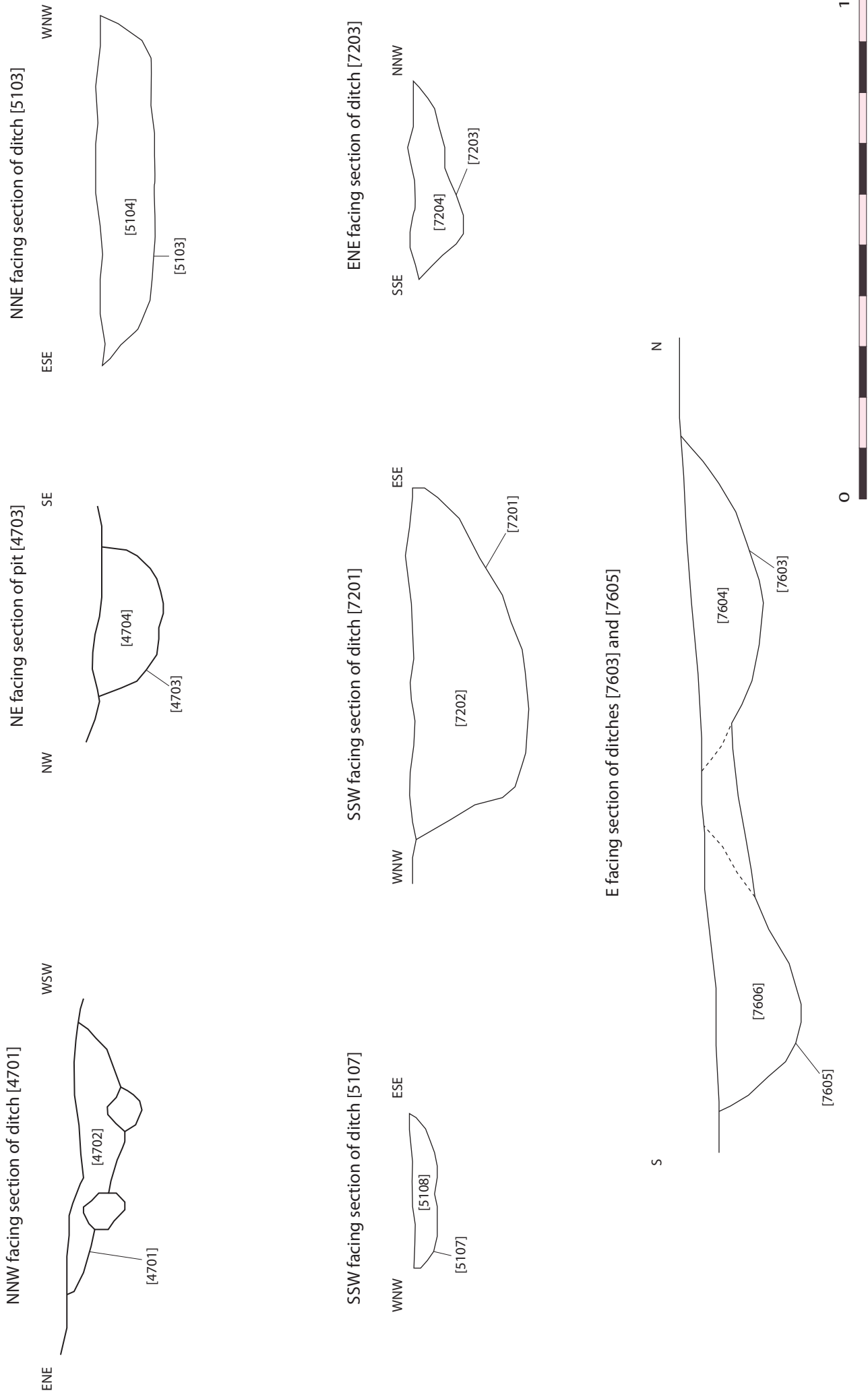


Figure 5 - Section drawings of prehistoric features excavated



Approximate site location

Figure 6 - Extract from Laurie's 1766 'Plan of Edinburgh and areas adjacent from an actual survey

Broomhills Road, Edinburgh: Archaeological Evaluation Data Structure Report

Section 2: Appendices

APPENDIX 1: Trench Descriptions

Trench 1

<i>Dimensions</i>	100 m by 2.2 m
<i>Total Area</i>	220 m ²
<i>Excavated Orientation</i>	W to E
<i>Soil Make-up</i>	Ploughed topsoil – Dark greyish brown sandy clay loam with occasional small to large stone inclusions – 0.3 to 0.4 m; Colluvium – dark brown clayey sand with abundant rounded stone inclusions – max depth 0.7 m
<i>Depth of Excavation</i>	1.2 m
<i>Significant Features</i>	None
<i>Other Features</i>	Rubble drains at 0 to 12 m aligned NE-SW. Rubble drains at 31 to 15 m; 42 m; 94 m aligned N-S. Ce tile drain at 34 to 45 m aligned NE-SW
<i>Natural Subsoil</i>	Pale orangey brown sandy clay with frequent gravel and stone inclusions
<i>Finds</i>	None

Trench 2

<i>Dimensions</i>	100 m by 2.2 m
<i>Total Area</i>	220 m ²
<i>Excavated Orientation</i>	N to S
<i>Soil Make-up</i>	Ploughed topsoil – Dark greyish brown sandy clay loam with occasional small to large stone inclusions – 0.3 to 0.4 m
<i>Depth of Excavation</i>	0.4 m
<i>Significant Features</i>	None
<i>Other Features</i>	Ce tile drain at 3 m aligned E to W
<i>Natural Subsoil</i>	Pale orangey brown sandy clay with frequent gravel and stone inclusions
<i>Finds</i>	None

Trench 3

<i>Dimensions</i>	100 m by 2.2 m
<i>Total Area</i>	220 m ²
<i>Excavated Orientation</i>	N to S
<i>Soil Make-up</i>	Ploughed topsoil – Dark greyish brown sandy clay loam with occasional small to large stone inclusions – 0.3 to 0.4 m
<i>Depth of Excavation</i>	0.4 m
<i>Significant Features</i>	None
<i>Other Features</i>	Ce tile drain at 19.6 to 20.6 m; 29.8 to 30.9 m; aligned E-W; Rubble drains at 4 to 4.9 m; 13.7 to 14.6 m; 23.7 to 24.4 m; 33.1 to 33.8 m; 43.1 to 44 m; 52.9 to 53.9 m aligned E-W (0.22 m wide); Rubble drain at 82.4 to 92 m aligned NE-SW (0.5 m wide)
<i>Natural Subsoil</i>	Pale orangey brown sandy clay with frequent gravel and stone inclusions
<i>Finds</i>	None

Trench 4

<i>Dimensions</i>	100 m by 2.2 m
<i>Total Area</i>	220 m ²
<i>Excavated Orientation</i>	N to S
<i>Soil Make-up</i>	Ploughed topsoil – Dark greyish brown sandy clay loam with occasional small to large stone inclusions – 0.3 to 0.4 m
<i>Depth of Excavation</i>	0.4 m
<i>Significant Features</i>	None

<i>Other Features</i>	Ce tile drain at 31.5 m; 53 m; 90 m aligned E-W; Rubble drains at 0 to 1 m; 9 to 14 m; 43.5 m; 49 m aligned NE-SW
<i>Natural Subsoil</i>	Pale orangey brown sandy clay with frequent gravel and stone inclusions
<i>Finds</i>	None

Trench 5

<i>Dimensions</i>	100 m by 2.2 m
<i>Total Area</i>	220 m ²
<i>Excavated Orientation</i>	N to S
<i>Soil Make-up</i>	Ploughed topsoil – Dark greyish brown sandy clay loam with occasional small to large stone inclusions – 0.3 to 0.4 m; Early plough soil – medium brown sandy clay with frequent coal flecks and small stones – 0.2 m
<i>Depth of Excavation</i>	0.4 m
<i>Significant Features</i>	None
<i>Other Features</i>	Ce tile drain at 5.4 to 6.1 m; 15.5 to 16.3 m; 26.5 to 27.4 m; 35.3 to 36.1 m; 49.9 to 50.8 m; 54.5 to 55.5 m; 69.5 to 70.4 m aligned E-W; Rubble drains at 10.2 to 11 m; 11.6 to 12.3 m; 20 to 21 m; 29.9 to 30.8 m; 39.7 to 40.7 m; 45.2 to 45.9 m; 59.7 to 60.6 m; 79.2 to 80.2 m; 89.3 to 90 m aligned E-W
<i>Natural Subsoil</i>	Pale orangey brown sandy clay with frequent gravel and stone inclusions
<i>Finds</i>	None

Trench 6

<i>Dimensions</i>	100 m by 2.2 m
<i>Total Area</i>	220 m ²
<i>Excavated Orientation</i>	N to S
<i>Soil Make-up</i>	Ploughed topsoil – Dark greyish brown sandy clay loam with occasional small to large stone inclusions – 0.3 to 0.4 m
<i>Depth of Excavation</i>	0.4 m
<i>Significant Features</i>	None
<i>Other Features</i>	Rubble drains at 62 m aligned E-W
<i>Natural Subsoil</i>	Pale orangey brown sandy clay with frequent gravel and stone inclusions
<i>Finds</i>	None

Trench 7

<i>Dimensions</i>	100 m by 2.2 m
<i>Total Area</i>	220 m ²
<i>Excavated Orientation</i>	N to S
<i>Soil Make-up</i>	Ploughed topsoil – Dark greyish brown sandy clay loam with occasional small to large stone inclusions – 0.3 to 0.4 m
<i>Depth of Excavation</i>	0.4 m
<i>Significant Features</i>	None
<i>Other Features</i>	Ce tile drain at 18.9 m; 88.3 m aligned E-W; Rubble drain at 4.9 m; 14.2 m; 23.4 m; 32.7 m; 41.9 m; 60.5 m; 69.7 m; 79 m; 88.3 m aligned E-W
<i>Natural Subsoil</i>	Pale orangey brown sandy clay with frequent gravel and stone inclusions
<i>Finds</i>	None

Trench 8

<i>Dimensions</i>	100 m by 2.2 m
<i>Total Area</i>	220 m ²
<i>Excavated Orientation</i>	N to S
<i>Soil Make-up</i>	Ploughed topsoil – Dark greyish brown sandy clay loam with occasional small to large stone inclusions – 0.3 to 0.4 m
<i>Depth of Excavation</i>	0.4 m

<i>Significant Features</i>	None
<i>Other Features</i>	None
<i>Natural Subsoil</i>	Pale orangey brown sandy clay with frequent gravel and stone inclusions. Becomes white sandy bedrock at 78 to 90 m.
<i>Finds</i>	None

Trench 9

<i>Dimensions</i>	50 m by 2.2 m; 3 m by 10 m
<i>Total Area</i>	155 m ²
<i>Excavated Orientation</i>	N to S
<i>Soil Make-up</i>	Ploughed topsoil – Dark greyish brown sandy clay loam with occasional small to large stone inclusions – 0.3 to 0.4 m; Early plough soil – medium brown sandy clay with frequent coal flecks and small stones – 0.2 m
<i>Depth of Excavation</i>	0.4 m
<i>Significant Features</i>	Large pit [901] with deposits [902], [903] and [904]
<i>Other Features</i>	Ce tile drain at 42.1 m aligned E-W; Rubble drains at 13.2 m; 22.7 m; 33.3 m aligned E-W
<i>Natural Subsoil</i>	Pale orangey brown sandy clay with frequent gravel and stone inclusions
<i>Finds</i>	None

Trench 10

<i>Dimensions</i>	100 m by 2.2 m
<i>Total Area</i>	220 m ²
<i>Excavated Orientation</i>	N to S
<i>Soil Make-up</i>	Ploughed topsoil – Dark greyish brown sandy clay loam with occasional small to large stone inclusions – 0.3 to 0.4 m
<i>Depth of Excavation</i>	0.4 m
<i>Significant Features</i>	None
<i>Other Features</i>	Ce tile drain at 14 to 16 m; 22 to 24 m; 27 to 29 m; 74 to 76 m; 88 to 90 m; 90 to 92 m aligned ENE-WSW; Rubble drain at 12 to 17 m; 23 to 27 m; 29 to 31 m aligned NE-SW; Rubble drain at 36.5 m aligned E-W; Ce tile drain at 78 to 100 m aligned N-S
<i>Natural Subsoil</i>	Pale orangey brown sandy clay with frequent gravel and stone inclusions.
<i>Finds</i>	None

Trench 11

<i>Dimensions</i>	30 m by 2.2 m
<i>Total Area</i>	66 m ²
<i>Excavated Orientation</i>	SW to NE
<i>Soil Make-up</i>	Ploughed topsoil – Dark greyish brown sandy clay loam with occasional small to large stone inclusions – 0.3 to 0.4 m
<i>Depth of Excavation</i>	0.4 m
<i>Significant Features</i>	None
<i>Other Features</i>	Ce tile drain at 0 to 2.9 m aligned E-W; Rubble drain at 4.7 to 6.5 m aligned N-S; Rubble drain at 8.7 m aligned NW-SE
<i>Natural Subsoil</i>	Pale orangey brown sandy clay with frequent gravel and stone inclusions.
<i>Finds</i>	None

Trench 12

<i>Dimensions</i>	100 m by 2.2 m
<i>Total Area</i>	220 m ²
<i>Excavated Orientation</i>	N to S
<i>Soil Make-up</i>	Ploughed topsoil – Dark greyish brown sandy clay loam with occasional small to large stone inclusions – 0.3 to 0.4 m
<i>Depth of Excavation</i>	0.4 m

<i>Significant Features</i>	None
<i>Other Features</i>	None
<i>Natural Subsoil</i>	Pale orangey brown sandy clay with frequent gravel and stone inclusions.
<i>Finds</i>	None

Trench 13

<i>Dimensions</i>	100 m by 2.2 m
<i>Total Area</i>	220 m ²
<i>Excavated Orientation</i>	SE to NW
<i>Soil Make-up</i>	Ploughed topsoil – Dark greyish brown sandy clay loam with occasional small to large stone inclusions – 0.3 to 0.4 m
<i>Depth of Excavation</i>	0.4 m
<i>Significant Features</i>	None
<i>Other Features</i>	Ce tile drain at 41 to 100 m aligned NW-SE; Rubble drain at 41 m aligned SW-NE
<i>Natural Subsoil</i>	Pale orangey brown sandy clay with frequent gravel and stone inclusions.
<i>Finds</i>	None

Trench 14

<i>Dimensions</i>	100 m by 2.2 m
<i>Total Area</i>	220 m ²
<i>Excavated Orientation</i>	SE to NW
<i>Soil Make-up</i>	Ploughed topsoil – Dark greyish brown sandy clay loam with occasional small to large stone inclusions – 0.3 to 0.4 m
<i>Depth of Excavation</i>	0.4 m
<i>Significant Features</i>	None
<i>Other Features</i>	Ce tile drain at 0 to 52.6 m aligned NW-SE; Rubble drain at 24.4 m aligned NE-SW
<i>Natural Subsoil</i>	Pale orangey brown sandy clay with frequent gravel and stone inclusions.
<i>Finds</i>	None

Trench 15

<i>Dimensions</i>	100 m by 2.2 m
<i>Total Area</i>	220 m ²
<i>Excavated Orientation</i>	SE to NW
<i>Soil Make-up</i>	Ploughed topsoil – Dark greyish brown sandy clay loam with occasional small to large stone inclusions – 0.3 to 0.4 m
<i>Depth of Excavation</i>	0.4 m
<i>Significant Features</i>	None
<i>Other Features</i>	Rubble drain at 86.3 m aligned SW-NE
<i>Natural Subsoil</i>	Pale orangey brown sandy clay with frequent gravel and stone inclusions.
<i>Finds</i>	None

Trench 16

<i>Dimensions</i>	100 m by 2.2 m
<i>Total Area</i>	220 m ²
<i>Excavated Orientation</i>	SE to NW
<i>Soil Make-up</i>	Ploughed topsoil – Dark greyish brown sandy clay loam with occasional small to large stone inclusions – 0.3 to 0.4 m
<i>Depth of Excavation</i>	0.4 m
<i>Significant Features</i>	None
<i>Other Features</i>	None
<i>Natural Subsoil</i>	Pale orangey brown sandy clay with frequent gravel and stone inclusions.
<i>Finds</i>	None

Trench 17

<i>Dimensions</i>	100 m by 2.2 m
<i>Total Area</i>	220 m ²
<i>Excavated Orientation</i>	NW to SE
<i>Soil Make-up</i>	Ploughed topsoil – Dark greyish brown sandy clay loam with occasional small to large stone inclusions – 0.3 to 0.4 m
<i>Depth of Excavation</i>	0.4 m
<i>Significant Features</i>	None
<i>Other Features</i>	None
<i>Natural Subsoil</i>	Pale orangey brown sandy clay with frequent gravel and stone inclusions.
<i> Finds</i>	None

Trench 18

<i>Dimensions</i>	80 m by 2.2 m
<i>Total Area</i>	176 m ²
<i>Excavated Orientation</i>	NW to SE
<i>Soil Make-up</i>	Ploughed topsoil – Dark greyish brown sandy clay loam with occasional small to large stone inclusions – 0.3 to 0.4 m
<i>Depth of Excavation</i>	0.4 m
<i>Significant Features</i>	None
<i>Other Features</i>	None
<i>Natural Subsoil</i>	Pale orangey brown sandy clay with frequent gravel and stone inclusions.
<i> Finds</i>	None

Trench 19

<i>Dimensions</i>	100 m by 2.2 m
<i>Total Area</i>	220 m ²
<i>Excavated Orientation</i>	S to N
<i>Soil Make-up</i>	Ploughed topsoil – Dark greyish brown sandy clay loam with occasional small to large stone inclusions – 0.3 to 0.4 m
<i>Depth of Excavation</i>	0.4 m
<i>Significant Features</i>	None
<i>Other Features</i>	Ce tile drain at 13 to 15.6 m; 25 to 26.4 m aligned NW-SE; Rubble drain at 56.8 to 57.7 m aligned SW-NE; Rubble drain at 58.8 to 59.8 m aligned NW-SE
<i>Natural Subsoil</i>	Pale orangey brown sandy clay with frequent gravel and stone inclusions.
<i> Finds</i>	None

Trench 20

<i>Dimensions</i>	105 m by 2.2 m
<i>Total Area</i>	231 m ²
<i>Excavated Orientation</i>	S to N
<i>Soil Make-up</i>	Ploughed topsoil – Dark greyish brown sandy clay loam with occasional small to large stone inclusions – 0.3 to 0.4 m
<i>Depth of Excavation</i>	0.4 m
<i>Significant Features</i>	None
<i>Other Features</i>	None
<i>Natural Subsoil</i>	Pale orangey brown sandy clay with frequent gravel and stone inclusions.
<i> Finds</i>	None

Trench 21

<i>Dimensions</i>	45 m by 2.2 m
<i>Total Area</i>	99 m ²
<i>Excavated Orientation</i>	SE to NW
<i>Soil Make-up</i>	Ploughed topsoil – Dark greyish brown sandy clay loam with occasional small to large stone inclusions – 0.3 to 0.4 m

<i>Depth of Excavation</i>	0.4 m
<i>Significant Features</i>	None
<i>Other Features</i>	None
<i>Natural Subsoil</i>	Pale orangey brown sandy clay with frequent gravel and stone inclusions. Some areas of very large stone or bedrock
<i>Finds</i>	None

Trench 22

<i>Dimensions</i>	100 m by 2.2 m
<i>Total Area</i>	220 m ²
<i>Excavated Orientation</i>	S to N
<i>Soil Make-up</i>	Ploughed topsoil – Dark greyish brown sandy clay loam with occasional small to large stone inclusions – 0.3 to 0.4 m
<i>Depth of Excavation</i>	0.4 m
<i>Significant Features</i>	None
<i>Other Features</i>	None
<i>Natural Subsoil</i>	Pale orangey brown sandy clay with frequent gravel and stone inclusions.
<i>Finds</i>	None

Trench 23

<i>Dimensions</i>	45 m by 2.2 m
<i>Total Area</i>	99 m ²
<i>Excavated Orientation</i>	SE to NW
<i>Soil Make-up</i>	Ploughed topsoil – Dark greyish brown sandy clay loam with occasional small to large stone inclusions – 0.3 to 0.4 m
<i>Depth of Excavation</i>	0.4 m
<i>Significant Features</i>	None
<i>Other Features</i>	None
<i>Natural Subsoil</i>	Pale orangey brown sandy clay with frequent gravel and stone inclusions.
<i>Finds</i>	None

Trench 24

<i>Dimensions</i>	90 m by 2.2 m
<i>Total Area</i>	198 m ²
<i>Excavated Orientation</i>	NW to SE
<i>Soil Make-up</i>	Ploughed topsoil – Dark greyish brown sandy clay loam with occasional small to large stone inclusions – 0.3 to 0.4 m; Colluvium – dark brown clayey sand with abundant rounded stone inclusions – max depth 0.24 m
<i>Depth of Excavation</i>	0.64 m
<i>Significant Features</i>	None
<i>Other Features</i>	Rubble drain at 72.1 to 72.9 m; 30.2 to 32.1 aligned N-S
<i>Natural Subsoil</i>	Pale orangey brown sandy clay with frequent gravel and stone inclusions.
<i>Finds</i>	None

Trench 25

<i>Dimensions</i>	50 m by 2.2 m
<i>Total Area</i>	110 m ²
<i>Excavated Orientation</i>	E to W
<i>Soil Make-up</i>	Ploughed topsoil – Dark greyish brown sandy clay loam with occasional small to large stone inclusions – 0.3 to 0.4 m; Colluvium – dark brown clayey sand with abundant rounded stone inclusions – max depth 0.4 m (between 32 to 45 m)
<i>Depth of Excavation</i>	0.8 m

<i>Significant Features</i>	None
<i>Other Features</i>	None
<i>Natural Subsoil</i>	Pale orangey brown sandy clay with frequent gravel and stone inclusions.
<i>Finds</i>	None

Trench 26

<i>Dimensions</i>	100 m by 2.2 m
<i>Total Area</i>	220 m ²
<i>Excavated Orientation</i>	NW to SE
<i>Soil Make-up</i>	Ploughed topsoil – Dark greyish brown sandy clay loam with occasional small to large stone inclusions – 0.3 to 0.4 m; Colluvium – dark brown clayey sand with abundant rounded stone inclusions – max depth 0.54 m
<i>Depth of Excavation</i>	0.94 m
<i>Significant Features</i>	None
<i>Other Features</i>	Rubble drain at 6.3 to 7.32 m aligned E-W; Rubble drain at 40.1 to 41.1 m aligned N-S; Ce tile at 9.9 to 10.1 m; 42.2 to 47.3 m aligned E-W
<i>Natural Subsoil</i>	Pale orangey brown sandy clay with frequent gravel and stone inclusions.
<i>Finds</i>	None

Trench 27

<i>Dimensions</i>	60 m by 2.2 m
<i>Total Area</i>	132 m ²
<i>Excavated Orientation</i>	NW to SE
<i>Soil Make-up</i>	Ploughed topsoil – Dark greyish brown sandy clay loam with occasional small to large stone inclusions – 0.3 to 0.4 m; Colluvium from 12 to 31 m – dark brown clayey sand with abundant rounded stone inclusions – max depth 0.7 m; Natural hollow infill - Greyish brown clayey sand and stone from 45 to 60 m – max depth 0.4 m
<i>Depth of Excavation</i>	1 m
<i>Significant Features</i>	None
<i>Other Features</i>	Rubble drain at 72.1 to 72.9 m; 30.2 to 32.1 aligned N-S
<i>Natural Subsoil</i>	Pale orangey brown sandy clay with frequent gravel and stone inclusions until 12 m then Dark brown and grey clayey sand to 28 m then mid yellowish brown clayey sand to 39 m then purplish grey sandy clay with large stone inclusions to 42 m then pale orangey brown sandy clay with frequent grey sandstone inclusions.
<i>Finds</i>	None

Trench 28

<i>Dimensions</i>	100 m by 2.2 m
<i>Total Area</i>	220 m ²
<i>Excavated Orientation</i>	NW to SE
<i>Soil Make-up</i>	Ploughed topsoil – Dark greyish brown sandy clay loam with occasional small to large stone inclusions – 0.3 to 0.4 m; Colluvium – dark brown clayey sand with abundant rounded stone inclusions – max depth 0.8 m
<i>Depth of Excavation</i>	1.2 m
<i>Significant Features</i>	None
<i>Other Features</i>	Rubble drain at 4 m; 79.4 m aligned NE-SW; Ce tile drain at 72.2 to 78.6 m aligned E-W
<i>Natural Subsoil</i>	Pale orangey brown sandy clay with frequent gravel and stone inclusions.
<i>Finds</i>	None

Trench 29

<i>Dimensions</i>	50 m by 2.2 m
<i>Total Area</i>	110 m ²
<i>Excavated Orientation</i>	SE to NW
<i>Soil Make-up</i>	Ploughed topsoil – Dark greyish brown sandy clay loam with occasional small to large stone inclusions – 0.3 to 0.4 m; Colluvium – dark brown clayey sand with abundant rounded stone inclusions – max depth 0.3 m
<i>Depth of Excavation</i>	0.4 m
<i>Significant Features</i>	Post medieval ditch [2901]
<i>Other Features</i>	Rubble drain at 34.2 m aligned NE-SW (0.7 m wide); Ce tile drain at 37.7 m aligned NE-SW; Rubble drain at 38.3 to 41.1 m aligned E-W (0.3 m wide).
<i>Natural Subsoil</i>	Dark greyish brown sandy clay and grey stone until 15 m then pale orangey brown sandy clay with frequent gravel and stone inclusions.
<i>Finds</i>	None

Trench 30

<i>Dimensions</i>	90 m by 2.2 m
<i>Total Area</i>	198 m ²
<i>Excavated Orientation</i>	NW to SE
<i>Soil Make-up</i>	Ploughed topsoil – Dark greyish brown sandy clay loam with occasional small to large stone inclusions – 0.3 to 0.4 m;
<i>Depth of Excavation</i>	0.4 m
<i>Significant Features</i>	None
<i>Other Features</i>	Rubble drain at 0.1 to 0.4 m; 3.5 to 3.8 m aligned N-S; Ce tile drain at 7.9 aligned E-W
<i>Natural Subsoil</i>	Pale orangey brown sandy clay with frequent gravel and stone inclusions.
<i>Finds</i>	None

Trench 31

<i>Dimensions</i>	60 m by 2.2 m
<i>Total Area</i>	132 m ²
<i>Excavated Orientation</i>	NW to SE
<i>Soil Make-up</i>	Ploughed topsoil – Dark greyish brown sandy clay loam with occasional small to large stone inclusions – 0.3 to 0.4 m; Colluvium from 14 m – dark brown clayey sand with abundant rounded stone inclusions – max depth 0.73 m
<i>Depth of Excavation</i>	1.03 m
<i>Significant Features</i>	Post medieval ditch [2901]
<i>Other Features</i>	Rubble drain at 3.5 m aligned SW-NE
<i>Natural Subsoil</i>	Pale orangey brown sandy clay with frequent gravel and stone inclusions.
<i>Finds</i>	None

Trench 32

<i>Dimensions</i>	100 m by 2.2 m
<i>Total Area</i>	220 m ²
<i>Excavated Orientation</i>	N to S
<i>Soil Make-up</i>	Ploughed topsoil – Dark greyish brown sandy clay loam with occasional small to large stone inclusions – 0.3 to 0.4 m;
<i>Depth of Excavation</i>	0.4 m
<i>Significant Features</i>	None
<i>Other Features</i>	Rubble drain at 0 m; 52.4 m aligned SW-NE; Rubble drain at 8.4 m; 79.4 m aligned E-W
<i>Natural Subsoil</i>	Pale orangey brown sandy clay with frequent gravel and stone inclusions.
<i>Finds</i>	None

Trench 33

<i>Dimensions</i>	25 m by 2.2 m
<i>Total Area</i>	55 m ²
<i>Excavated Orientation</i>	N to S
<i>Soil Make-up</i>	Ploughed topsoil – Dark greyish brown sandy clay loam with occasional small to large stone inclusions – 0.3 to 0.4 m;
<i>Depth of Excavation</i>	1 m
<i>Significant Features</i>	Post medieval ditch [2901]
<i>Other Features</i>	Large pit associated with white Ce. Filled with large sandstone blocks up to 1 m deep – modern quarrying
<i>Natural Subsoil</i>	Pale orangey brown sandy clay with frequent gravel and stone inclusions.
<i>Finds</i>	None

Trench 34

<i>Dimensions</i>	100 m by 2.2 m
<i>Total Area</i>	220 m ²
<i>Excavated Orientation</i>	N to S
<i>Soil Make-up</i>	Ploughed topsoil – Dark greyish brown sandy clay loam with occasional small to large stone inclusions – 0.3 to 0.4 m;
<i>Depth of Excavation</i>	0.4 m
<i>Significant Features</i>	Ditch [2901]
<i>Other Features</i>	Rubble drain at 26.1 m aligned E-W Ce tile drain at 10.5 m; 20.4 m; 30 m; 39.8 m aligned E-W
<i>Natural Subsoil</i>	Pale orangey brown sandy clay with frequent gravel and stone inclusions.
<i>Finds</i>	None

Trench 35

<i>Dimensions</i>	60 m by 2.2 m
<i>Total Area</i>	132 m ²
<i>Excavated Orientation</i>	E to W
<i>Soil Make-up</i>	Ploughed topsoil – Dark greyish brown sandy clay loam with occasional small to large stone inclusions – 0.3 to 0.4 m;
<i>Depth of Excavation</i>	0.4 m
<i>Significant Features</i>	Ditch [3501]
<i>Other Features</i>	Ce tile drain at 0 to 3.1 m
<i>Natural Subsoil</i>	Pink and yellowish brown sandy clay and stone to 8.8 m then pale orangey brown sandy clay with very large stone or bedrock throughout
<i>Finds</i>	None

Trench 36

<i>Dimensions</i>	100 m by 2.2 m
<i>Total Area</i>	220 m ²
<i>Excavated Orientation</i>	N to S
<i>Soil Make-up</i>	Ploughed topsoil – Dark greyish brown sandy clay loam with occasional small to large stone inclusions – 0.3 to 0.4 m;
<i>Depth of Excavation</i>	0.4 m
<i>Significant Features</i>	None
<i>Other Features</i>	Modern pit at 12.4 m; Ce tile drain at 83 m aligned E-W
<i>Natural Subsoil</i>	Pale orangey brown sandy clay with frequent gravel and stone inclusions.
<i>Finds</i>	None

Trench 37

<i>Dimensions</i>	60 m by 2.2 m
<i>Total Area</i>	132 m ²
<i>Excavated Orientation</i>	W to E

<i>Soil Make-up</i>	Ploughed topsoil – Dark greyish brown sandy clay loam with occasional small to large stone inclusions – 0.3 to 0.4 m;
<i>Depth of Excavation</i>	0.4 m
<i>Significant Features</i>	None
<i>Other Features</i>	None
<i>Natural Subsoil</i>	Pale orangey brown sandy clay with frequent gravel and stone inclusions.
<i>Finds</i>	None

Trench 38

<i>Dimensions</i>	100 m by 2.2 m
<i>Total Area</i>	220 m ²
<i>Excavated Orientation</i>	N to S
<i>Soil Make-up</i>	Ploughed topsoil – Dark greyish brown sandy clay loam with occasional small to large stone inclusions – 0.3 to 0.4 m;
<i>Depth of Excavation</i>	0.4 m
<i>Significant Features</i>	None
<i>Other Features</i>	Ce tile drain at 41.4 m aligned E-W
<i>Natural Subsoil</i>	Pale orangey brown sandy clay with frequent gravel and stone inclusions.
<i>Finds</i>	None

Trench 39

<i>Dimensions</i>	90 m by 2.2 m
<i>Total Area</i>	198 m ²
<i>Excavated Orientation</i>	N to S
<i>Soil Make-up</i>	Ploughed topsoil – Dark greyish brown sandy clay loam with occasional small to large stone inclusions – 0.3 to 0.4 m;
<i>Depth of Excavation</i>	0.4 m
<i>Significant Features</i>	None
<i>Other Features</i>	None
<i>Natural Subsoil</i>	Pale orangey brown sandy clay with frequent gravel and stone inclusions with seams of grey and yellow clay throughout.
<i>Finds</i>	None

Trench 40

<i>Dimensions</i>	100 m by 2.2 m
<i>Total Area</i>	220 m ²
<i>Excavated Orientation</i>	N to S
<i>Soil Make-up</i>	Ploughed topsoil – Dark greyish brown sandy clay loam with occasional small to large stone inclusions – 0.3 to 0.4 m; Colluvium – dark brown clayey sand with abundant rounded stone inclusions – max depth 0.8 m
<i>Depth of Excavation</i>	1.2 m
<i>Significant Features</i>	None
<i>Other Features</i>	Ce tile drain at 47.2 m aligned E-W
<i>Natural Subsoil</i>	Pale orangey brown sandy clay with frequent gravel and stone inclusions.
<i>Finds</i>	None

Trench 41

<i>Dimensions</i>	25 m by 2.2 m
<i>Total Area</i>	55 m ²
<i>Excavated Orientation</i>	SE to NW
<i>Soil Make-up</i>	Ploughed topsoil – Dark greyish brown sandy clay loam with occasional small to large stone inclusions – 0.3 to 0.4 m;
<i>Depth of Excavation</i>	0.4 m

<i>Significant Features</i>	None
<i>Other Features</i>	None
<i>Natural Subsoil</i>	Blue grey and yellow clay with seams of bedrock to 11.2 m then pale orangey brown sandy clay with frequent gravel and stone inclusions
<i>Finds</i>	None

Trench 42

<i>Dimensions</i>	90 m by 2.2 m
<i>Total Area</i>	198 m ²
<i>Excavated Orientation</i>	S to N
<i>Soil Make-up</i>	Ploughed topsoil – Dark greyish brown sandy clay loam with occasional small to large stone inclusions – 0.3 to 0.4 m; Colluvium – dark brown clayey sand with abundant rounded stone inclusions – max depth 0.6 m
<i>Depth of Excavation</i>	1 m
<i>Significant Features</i>	None
<i>Other Features</i>	None
<i>Natural Subsoil</i>	Pale orangey brown sandy clay with frequent gravel and stone inclusions.
<i>Finds</i>	None

Trench 43

<i>Dimensions</i>	30 m by 2.2 m
<i>Total Area</i>	66 m ²
<i>Excavated Orientation</i>	SE to NW
<i>Soil Make-up</i>	Ploughed topsoil – Dark greyish brown sandy clay loam with occasional small to large stone inclusions – 0.3 to 0.4 m;
<i>Depth of Excavation</i>	0.4 m
<i>Significant Features</i>	None
<i>Other Features</i>	None
<i>Natural Subsoil</i>	Blue grey and yellow clay with seams of bedrock to 11.2 m then pale orangey brown sandy clay with frequent gravel and stone inclusions
<i>Finds</i>	None

Trench 44

<i>Dimensions</i>	100 m by 2.2 m
<i>Total Area</i>	220 m ²
<i>Excavated Orientation</i>	S to N
<i>Soil Make-up</i>	Ploughed topsoil – Dark greyish brown sandy clay loam with occasional small to large stone inclusions – 0.3 to 0.4 m;
<i>Depth of Excavation</i>	0.4 m
<i>Significant Features</i>	None
<i>Other Features</i>	Furrow aligned E-W at 76.5 m; Rubble drain at 46.7 m aligned E-W; Rubble drain at 66.4 m; 86.1 m aligned SE-NW; Ce tile drain at 68 m; 80 m aligned E-W
<i>Natural Subsoil</i>	Pale orangey brown sandy clay with frequent gravel and stone inclusions.
<i>Finds</i>	None

Trench 45

<i>Dimensions</i>	50 m by 2.2 m
<i>Total Area</i>	110 m ²
<i>Excavated Orientation</i>	N to S
<i>Soil Make-up</i>	Ploughed topsoil – Dark greyish brown sandy clay loam with occasional small to large stone inclusions – 0.3 to 0.4 m;

	Early plough soil/colluvium – medium brown sandy clay with frequent coal flecks and small stones – 0.75 m
<i>Depth of Excavation</i>	1.2 m
<i>Significant Features</i>	None
<i>Other Features</i>	None
<i>Natural Subsoil</i>	Pale orangey brown sandy clay with frequent gravel and stone inclusions mixed with mid grey sandy clay and grey sandstone inclusions
<i>Finds</i>	None

Trench 46

<i>Dimensions</i>	100 m by 2.2 m
<i>Total Area</i>	220 m ²
<i>Excavated Orientation</i>	N to S
<i>Soil Make-up</i>	Ploughed topsoil – Dark greyish brown sandy clay loam with occasional small to large stone inclusions – 0.3 to 0.4 m;
<i>Depth of Excavation</i>	0.4 m
<i>Significant Features</i>	None
<i>Other Features</i>	Rubble drain at 63.4 m aligned NW-SE
<i>Natural Subsoil</i>	Pale orangey brown sandy clay with frequent gravel and stone inclusions.
<i>Finds</i>	None

Trench 47

<i>Dimensions</i>	60 m by 2.2 m
<i>Total Area</i>	132 m ²
<i>Excavated Orientation</i>	W to E
<i>Soil Make-up</i>	Ploughed topsoil – Dark greyish brown sandy clay loam with occasional small to large stone inclusions – 0.3 to 0.4 m;
<i>Depth of Excavation</i>	0.4 m
<i>Significant Features</i>	Curvilinear [4701]; Pits [4703] and [4705]
<i>Other Features</i>	Ce tile drain at 29.55 m aligned N-S
<i>Natural Subsoil</i>	Pale orangey brown sandy clay with frequent gravel and stone inclusions until 20 m then orange sandy gravel
<i>Finds</i>	None

Trench 48

<i>Dimensions</i>	100 m by 2.2 m
<i>Total Area</i>	220 m ²
<i>Excavated Orientation</i>	W to E
<i>Soil Make-up</i>	Ploughed topsoil – Dark greyish brown sandy clay loam with occasional small to large stone inclusions – 0.3 to 0.4 m;
<i>Depth of Excavation</i>	0.4 m
<i>Significant Features</i>	None
<i>Other Features</i>	Ce tile drain at 38.6 m aligned N-S
<i>Natural Subsoil</i>	Pale orangey brown sandy clay with frequent gravel and stone inclusions.
<i>Finds</i>	None

Trench 49

<i>Dimensions</i>	25 m by 2.2 m
<i>Total Area</i>	55 m ²
<i>Excavated Orientation</i>	W to E
<i>Soil Make-up</i>	Ploughed topsoil – Dark greyish brown sandy clay loam with occasional small to large stone inclusions – 0.3 to 0.4 m;
<i>Depth of Excavation</i>	0.4 m
<i>Significant Features</i>	Curvilinears [4901] and [4903]; possible continuation of ditch [4701]

<i>Other Features</i>	None
<i>Natural Subsoil</i>	Orange sandy gravel
<i>Finds</i>	None

Trench 50

<i>Dimensions</i>	100 m by 2.2 m
<i>Total Area</i>	220 m ²
<i>Excavated Orientation</i>	N to S
<i>Soil Make-up</i>	Ploughed topsoil – Dark greyish brown sandy clay loam with occasional small to large stone inclusions – 0.3 to 0.4 m;
<i>Depth of Excavation</i>	0.4 m
<i>Significant Features</i>	None
<i>Other Features</i>	Rubble drain at 70.1 m aligned N-S; Ce tile drain at 44.8 m aligned NE-SW
<i>Natural Subsoil</i>	Pale orangey brown sandy clay with frequent gravel and stone inclusions.
<i>Finds</i>	None

Trench 51

<i>Dimensions</i>	60 m by 2.2 m
<i>Total Area</i>	132 m ²
<i>Excavated Orientation</i>	E to W
<i>Soil Make-up</i>	Ploughed topsoil – Dark greyish brown sandy clay loam with occasional small to large stone inclusions – 0.3 to 0.4 m;
<i>Depth of Excavation</i>	0.4 m
<i>Significant Features</i>	Ditches [5101], [5103], [5105], [5107], [5109], [5111] and [5113]
<i>Other Features</i>	Furrows at 8.7 m; 16.6 m; 24.6 m aligned N-S. Ce tile drain at 0 to 20 m aligned E-W; Ce tile drain at 28.1 m aligned N-S
<i>Natural Subsoil</i>	Pale orangey brown sandy clay with frequent gravel and stone inclusions until 25 m then orange sandy gravel
<i>Finds</i>	None

Trench 52

<i>Dimensions</i>	100 m by 2.2 m
<i>Total Area</i>	220 m ²
<i>Excavated Orientation</i>	W to E
<i>Soil Make-up</i>	Ploughed topsoil – Dark greyish brown sandy clay loam with occasional small to large stone inclusions – 0.3 to 0.4 m;
<i>Depth of Excavation</i>	0.4 m
<i>Significant Features</i>	None
<i>Other Features</i>	Rubble drain at 63 m aligned N-S
<i>Natural Subsoil</i>	Pale orangey brown sandy clay with frequent gravel and stone inclusions.
<i>Finds</i>	None

Trench 53

<i>Dimensions</i>	65 m by 2.2 m
<i>Total Area</i>	143 m ²
<i>Excavated Orientation</i>	W to E
<i>Soil Make-up</i>	Ploughed topsoil – Dark greyish brown sandy clay loam with occasional small to large stone inclusions – 0.3 to 0.4 m; Colluvium from 40 to 60 m– dark brown clayey sand with abundant rounded stone inclusions – max depth 0.85 m
<i>Depth of Excavation</i>	1.25 m
<i>Significant Features</i>	Ditches [5301], [5303] and [5310]. Large pit/cut feature [5305]
<i>Other Features</i>	Furrows at 10.6 m; 18.5 m aligned N-S; Ce tile drain at 26.7 m aligned N-S

<i>Natural Subsoil</i>	Pale orangey brown sandy clay with frequent gravel and stone inclusions until 22 m then orange sandy gravel to 60 m then purple boulder clay
<i>Finds</i>	None
Trench 54	
<i>Dimensions</i>	100 m by 2.2 m
<i>Total Area</i>	220 m ²
<i>Excavated Orientation</i>	W to E
<i>Soil Make-up</i>	Ploughed topsoil – Dark greyish brown sandy clay loam with occasional small to large stone inclusions – 0.3 to 0.4 m;
<i>Depth of Excavation</i>	0.4 m
<i>Significant Features</i>	None
<i>Other Features</i>	None
<i>Natural Subsoil</i>	Pale orangey brown sandy clay with frequent gravel and stone inclusions.
<i>Finds</i>	None
Trench 55	
<i>Dimensions</i>	100 m by 2.2 m
<i>Total Area</i>	220 m ²
<i>Excavated Orientation</i>	W to E
<i>Soil Make-up</i>	Ploughed topsoil – Dark greyish brown sandy clay loam with occasional small to large stone inclusions – 0.3 to 0.4 m;
<i>Depth of Excavation</i>	0.4 m
<i>Significant Features</i>	None
<i>Other Features</i>	Rubble drain at 64.3 m to 65.3 m
<i>Natural Subsoil</i>	Pale orangey brown sandy clay with frequent gravel and stone inclusions.
<i>Finds</i>	None
Trench 56	
<i>Dimensions</i>	100 m by 2.2 m
<i>Total Area</i>	220 m ²
<i>Excavated Orientation</i>	W to E
<i>Soil Make-up</i>	Ploughed topsoil – Dark greyish brown sandy clay loam with occasional small to large stone inclusions – 0.3 to 0.4 m;
<i>Depth of Excavation</i>	0.4 m
<i>Significant Features</i>	None
<i>Other Features</i>	Rubble drain at 61.8 m aligned SE-NW
<i>Natural Subsoil</i>	Pale orangey brown sandy clay with frequent gravel and stone inclusions.
<i>Finds</i>	None
Trench 57	
<i>Dimensions</i>	60 m by 2.2 m
<i>Total Area</i>	132 m ²
<i>Excavated Orientation</i>	S to N
<i>Soil Make-up</i>	Ploughed topsoil – Dark greyish brown sandy clay loam with occasional small to large stone inclusions – 0.3 to 0.4 m;
<i>Depth of Excavation</i>	0.4 m
<i>Significant Features</i>	None
<i>Other Features</i>	Rubble drain at 25.1 to 26.6 m aligned NE-SW
<i>Natural Subsoil</i>	Pale orangey brown sandy clay with frequent gravel and stone inclusions.
<i>Finds</i>	None
Trench 58	
<i>Dimensions</i>	100 m by 2.2 m

<i>Total Area</i>	220 m ²
<i>Excavated Orientation</i>	S to N
<i>Soil Make-up</i>	Ploughed topsoil – Dark greyish brown sandy clay loam with occasional small to large stone inclusions – 0.3 to 0.4 m;
<i>Depth of Excavation</i>	0.4 m
<i>Significant Features</i>	None
<i>Other Features</i>	Rubble drain at 2.5 m; 21.3 m; 39.6 m; 85.5 m aligned NE-SW
<i>Natural Subsoil</i>	Pale orangey brown sandy clay with frequent gravel and stone inclusions.
<i>Finds</i>	None

Trench 59

<i>Dimensions</i>	100 m by 2.2 m
<i>Total Area</i>	220 m ²
<i>Excavated Orientation</i>	N to S
<i>Soil Make-up</i>	Ploughed topsoil – Dark greyish brown sandy clay loam with occasional small to large stone inclusions – 0.3 to 0.4 m; Early plough soil – medium brown sandy clay with frequent coal flecks and small stones – 0.05 to 0.15 m
<i>Depth of Excavation</i>	0.52 m
<i>Significant Features</i>	None
<i>Other Features</i>	Furrow at 14.2 m aligned NW-SE measuring 1.1 m wide; Rubble drain at 2.5 m; 21.3 m; 39.6 m; 85.5 m aligned NE-SW
<i>Natural Subsoil</i>	Pale orangey brown sandy clay with frequent gravel and stone inclusions.
<i>Finds</i>	None

Trench 60

<i>Dimensions</i>	100 m by 2.2 m
<i>Total Area</i>	220 m ²
<i>Excavated Orientation</i>	S to N
<i>Soil Make-up</i>	Ploughed topsoil – Dark greyish brown sandy clay loam with occasional small to large stone inclusions – 0.3 to 0.4 m; Early plough soil – medium brown sandy clay with frequent coal flecks and small stones – 0.05 to 0.15 m
<i>Depth of Excavation</i>	0.45 m
<i>Significant Features</i>	None
<i>Other Features</i>	Rubble drain at 79.1 m aligned NW-SE; Ce tile drain at 76.8 m aligned NW-SE
<i>Natural Subsoil</i>	Pale orangey brown sandy clay with frequent gravel and stone inclusions.
<i>Finds</i>	None

Trench 61

<i>Dimensions</i>	100 m by 2.2 m
<i>Total Area</i>	220 m ²
<i>Excavated Orientation</i>	S to N
<i>Soil Make-up</i>	Ploughed topsoil – Dark greyish brown sandy clay loam with occasional small to large stone inclusions – 0.3 to 0.4 m; Early plough soil – medium brown sandy clay with frequent coal flecks and small stones – 0.05 to 0.15 m
<i>Depth of Excavation</i>	0.52 m
<i>Significant Features</i>	None
<i>Other Features</i>	Rubble drain at 70.1 m aligned NW-SE
<i>Natural Subsoil</i>	Pale orangey brown sandy clay with frequent gravel and stone inclusions.
<i>Finds</i>	None

Trench 62

<i>Dimensions</i>	100 m by 2.2 m
<i>Total Area</i>	220 m ²
<i>Excavated Orientation</i>	S to N
<i>Soil Make-up</i>	Ploughed topsoil – Dark greyish brown sandy clay loam with occasional small to large stone inclusions – 0.3 to 0.4 m; Early plough soil – medium brown sandy clay with frequent coal flecks and small stones – 0.05 to 0.15 m
<i>Depth of Excavation</i>	0.46 m
<i>Significant Features</i>	None
<i>Other Features</i>	Furrow at 3.8 m aligned NW-SE measuring 1.3 m wide; Rubble drain at 0 m aligned NW-SE; Rubble drain at 84.1 m aligned N-S; Ce tile drain at 13.6 m aligned E-W
<i>Natural Subsoil</i>	Pale orangey brown sandy clay with frequent gravel and stone inclusions.
<i>Finds</i>	None

Trench 63

<i>Dimensions</i>	100 m by 2.2 m
<i>Total Area</i>	220 m ²
<i>Excavated Orientation</i>	S to N
<i>Soil Make-up</i>	Ploughed topsoil – Dark greyish brown sandy clay loam with occasional small to large stone inclusions – 0.3 to 0.4 m; Early plough soil – medium brown sandy clay with frequent coal flecks and small stones – 0.05 to 0.15 m
<i>Depth of Excavation</i>	0.52 m
<i>Significant Features</i>	None
<i>Other Features</i>	Ce tile drain at 87.8 m aligned NW-SE
<i>Natural Subsoil</i>	Pale orangey brown sandy clay with frequent gravel and stone inclusions.
<i>Finds</i>	None

Trench 64

<i>Dimensions</i>	75 m by 2.2 m
<i>Total Area</i>	165 m ²
<i>Excavated Orientation</i>	S to N
<i>Soil Make-up</i>	Ploughed topsoil – Dark greyish brown sandy clay loam with occasional small to large stone inclusions – 0.3 to 0.4 m; Early plough soil – medium brown sandy clay with frequent coal flecks and small stones – 0.05 to 0.15 m
<i>Depth of Excavation</i>	0.47 m
<i>Significant Features</i>	None
<i>Other Features</i>	None
<i>Natural Subsoil</i>	Pale orangey brown sandy clay with frequent gravel and stone inclusions.
<i>Finds</i>	None

Trench 65

<i>Dimensions</i>	100 m by 2.2 m
<i>Total Area</i>	220 m ²
<i>Excavated Orientation</i>	S to N
<i>Soil Make-up</i>	Ploughed topsoil – Dark greyish brown sandy clay loam with occasional small to large stone inclusions – 0.3 to 0.4 m; Early plough soil – medium brown sandy clay with frequent coal flecks and small stones – 0.05 to 0.15 m
<i>Depth of Excavation</i>	0.52 m
<i>Significant Features</i>	None
<i>Other Features</i>	Furrow at 36.4 m; 63.7 m aligned SE-NW measuring 1.5 m wide; Rubble drain at 3.1 m aligned SW-NE; Rubble drain at 48.5 m aligned NW-SE

<i>Natural Subsoil</i>	Pale orangey brown sandy clay with frequent gravel and stone inclusions.
<i>Finds</i>	None
Trench 66	
<i>Dimensions</i>	97 m by 2.2 m
<i>Total Area</i>	213 m ²
<i>Excavated Orientation</i>	N to S
<i>Soil Make-up</i>	Ploughed topsoil – Dark greyish brown sandy clay loam with occasional small to large stone inclusions – 0.3 to 0.4 m;
<i>Depth of Excavation</i>	0.49 m
<i>Significant Features</i>	Possible pit 0.5m diameter at 21.1m, possible pit 0.33m diameter at 26.8m
<i>Other Features</i>	Rubble drain at 41.5m aligned NE-SW; Rubble drain at 81m aligned NW-SE
<i>Natural Subsoil</i>	Pale orangey brown sandy clay with frequent gravel and stone inclusions.
<i>Finds</i>	None
Trench 67	
<i>Dimensions</i>	100 m by 2.2 m
<i>Total Area</i>	220 m ²
<i>Excavated Orientation</i>	S to N
<i>Soil Make-up</i>	Ploughed topsoil – Dark greyish brown sandy clay loam with occasional small to large stone inclusions – 0.3 to 0.4 m;
<i>Depth of Excavation</i>	0.49 m
<i>Significant Features</i>	None
<i>Other Features</i>	None
<i>Natural Subsoil</i>	Pale orangey brown sandy clay with frequent gravel and stone inclusions.
<i>Finds</i>	None
Trench 68	
<i>Dimensions</i>	101 m by 2.2 m
<i>Total Area</i>	222 m ²
<i>Excavated Orientation</i>	N to S
<i>Soil Make-up</i>	Ploughed topsoil – Dark greyish brown sandy clay loam with occasional small to large stone inclusions – 0.3 to 0.4 m;
<i>Depth of Excavation</i>	0.46 m
<i>Significant Features</i>	None
<i>Other Features</i>	Rubble drain 26.8m orientation NW-SE
<i>Natural Subsoil</i>	Pale orangey brown sandy clay with frequent gravel and stone inclusions.
<i>Finds</i>	None
Trench 69	
<i>Dimensions</i>	70 m by 2.2 m
<i>Total Area</i>	222 m ²
<i>Excavated Orientation</i>	NE to SW
<i>Soil Make-up</i>	Ploughed topsoil – Dark greyish brown sandy clay loam with occasional small to large stone inclusions – 0.3 to 0.4 m;
<i>Depth of Excavation</i>	0.5m
<i>Significant Features</i>	None
<i>Other Features</i>	None
<i>Natural Subsoil</i>	Pale orangey brown sandy clay with frequent gravel and stone inclusions.
<i>Finds</i>	None
Trench 70	
<i>Dimensions</i>	100 m by 2.2 m
<i>Total Area</i>	220 m ²

<i>Excavated Orientation</i>	N to S
<i>Soil Make-up</i>	Ploughed topsoil – Dark greyish brown sandy clay loam with occasional small to large stone inclusions – 0.3 to 0.4 m;
<i>Depth of Excavation</i>	0.55 m
<i>Significant Features</i>	None
<i>Other Features</i>	Ditch, likely fairly modern at 14.6m orientation NW – SE; possible ditch at 23.3m orientation NW - SE
<i>Natural Subsoil</i>	Pale orangey brown sandy clay with frequent gravel and stone inclusions.
<i>Finds</i>	None

Trench 71

<i>Dimensions</i>	87.6 m by 2.2 m
<i>Total Area</i>	192 m ²
<i>Excavated Orientation</i>	SW to NE
<i>Soil Make-up</i>	Ploughed topsoil – Dark greyish brown sandy clay loam with occasional small to large stone inclusions – 0.3 to 0.4 m;
<i>Depth of Excavation</i>	0.44 m
<i>Significant Features</i>	None
<i>Other Features</i>	Rubble drain 43.4m orientation NW-SE; Rubble drains 61.6m, 69.7m, 71.4m orientation N-S
<i>Natural Subsoil</i>	Pale orangey brown sandy clay with frequent gravel and stone inclusions.
<i>Finds</i>	None

Trench 72

<i>Dimensions</i>	100 m by 2.2 m
<i>Total Area</i>	220 m ²
<i>Excavated Orientation</i>	W to E
<i>Soil Make-up</i>	Ploughed topsoil – Dark greyish brown sandy clay loam with occasional small to large stone inclusions – 0.3 to 0.4 m; Early plough soil from 40 m to 70 m – medium brown sandy clay with frequent coal flecks and small stones – 0.1 to 0.25 m
<i>Depth of Excavation</i>	0.65 m
<i>Significant Features</i>	Ditch [7201], [7203], [7205], [7209] and [7211]
<i>Other Features</i>	Rubble drain at 3.15 m; 4.9 m; 14 m; 21.7 m aligned N-S
<i>Natural Subsoil</i>	Pale orangey brown sandy clay with frequent gravel and stone inclusions until 14 m then orange sandy gravel until 75 m then purple boulder clay.
<i>Finds</i>	None

Trench 73

<i>Dimensions</i>	92 m by 2.2 m
<i>Total Area</i>	202 m ²
<i>Excavated Orientation</i>	NE to SW
<i>Soil Make-up</i>	Ploughed topsoil – Dark greyish brown sandy clay loam with occasional small to large stone inclusions – 0.3 to 0.4 m;
<i>Depth of Excavation</i>	0.49 m
<i>Significant Features</i>	None
<i>Other Features</i>	Rubble drain at 23m orientation N-S
<i>Natural Subsoil</i>	Pale orangey brown sandy clay with frequent gravel and stone inclusions.
<i>Finds</i>	None

Trench 74

<i>Dimensions</i>	100 m by 2.2 m
<i>Total Area</i>	220 m ²
<i>Excavated Orientation</i>	W to E

<i>Soil Make-up</i>	Ploughed topsoil – Dark greyish brown sandy clay loam with occasional small to large stone inclusions – 0.3 to 0.4 m; Early plough soil from 42 m to 63 m – medium brown sandy clay with frequent coal flecks and small stones – 0.1 to 0.25 m Colluvium and dumped soil from 85 m to end – dark brown clayey sand with abundant rounded stone inclusions – max depth 0.77 m
<i>Depth of Excavation</i>	1.2 m
<i>Significant Features</i>	Ditch [7401]
<i>Other Features</i>	Rubble drain at 7.5 m; 37.7 m aligned N-S; Ce tile drain at 44.8 m; 54 m aligned N-S
<i>Natural Subsoil</i>	Pale orangey brown sandy clay with frequent gravel and stone inclusions until 56 m then orange sandy gravel until 72 m then purple boulder clay.
<i>Finds</i>	None

Trench 75

<i>Dimensions</i>	91 m by 2.2 m
<i>Total Area</i>	200 m ²
<i>Excavated Orientation</i>	NE to SW
<i>Soil Make-up</i>	Ploughed topsoil – Dark greyish brown sandy clay loam with occasional small to large stone inclusions – 0.3 to 0.4 m;
<i>Depth of Excavation</i>	0.42 m
<i>Significant Features</i>	None
<i>Other Features</i>	Rubble drain at 28.9m orientation N-S
<i>Natural Subsoil</i>	Pale orangey brown sandy clay with frequent gravel and stone inclusions.
<i>Finds</i>	None

Trench 76

<i>Dimensions</i>	40 m by 2.2 m
<i>Total Area</i>	88 m ²
<i>Excavated Orientation</i>	SE to NW
<i>Soil Make-up</i>	Ploughed topsoil – Dark greyish brown sandy clay loam with occasional small to large stone inclusions – 0.3 to 0.4 m; Colluvium from 4 to 35 m – dark brown clayey sand with abundant rounded stone inclusions – max depth 0.7 m
<i>Depth of Excavation</i>	0.65 m
<i>Significant Features</i>	Ditch [7601], [7603], [7605], [7607] and [7609]
<i>Other Features</i>	Rubble drain at 3.15 m; 4.9 m; 14 m; 21.7 m aligned N-S
<i>Natural Subsoil</i>	Orange sand and gravel until 17.6 m then grey sandy clay with dark orange mottling and frequent stone inclusions to 23 m then mottled sandy clay and gravel.
<i>Finds</i>	None

Trench 77

<i>Dimensions</i>	88 m by 2.2 m
<i>Total Area</i>	193 m ²
<i>Excavated Orientation</i>	NE to SW
<i>Soil Make-up</i>	Ploughed topsoil – Dark greyish brown sandy clay loam with occasional small to large stone inclusions – 0.3 to 0.4 m;
<i>Depth of Excavation</i>	0.51 m
<i>Significant Features</i>	None
<i>Other Features</i>	Rubble drain at 19.6m orientation N-S
<i>Natural Subsoil</i>	Pale orangey brown sandy clay with frequent gravel and stone inclusions.
<i>Finds</i>	None

Trench 78

<i>Dimensions</i>	30 m by 2.2 m
<i>Total Area</i>	66 m ²
<i>Excavated Orientation</i>	N to S
<i>Soil Make-up</i>	Ploughed topsoil – Dark greyish brown sandy clay loam with occasional small to large stone inclusions – 0.3 to 0.4 m;
<i>Depth of Excavation</i>	0.42m
<i>Significant Features</i>	None
<i>Other Features</i>	None
<i>Natural Subsoil</i>	Pale orangey brown sandy clay with frequent gravel and stone inclusions.
<i>Finds</i>	None

Trench 79

<i>Dimensions</i>	74 m by 2.2 m
<i>Total Area</i>	162 m ²
<i>Excavated Orientation</i>	NE to SW
<i>Soil Make-up</i>	Ploughed topsoil – Dark greyish brown sandy clay loam with occasional small to large stone inclusions – 0.3 to 0.4 m;
<i>Depth of Excavation</i>	0.42 m
<i>Significant Features</i>	None
<i>Other Features</i>	Rubble drain at 17.6m orientation N-S
<i>Natural Subsoil</i>	Pale orangey brown sandy clay with frequent gravel and stone inclusions.
<i>Finds</i>	None

Trench 80

<i>Dimensions</i>	100 m by 2.2 m
<i>Total Area</i>	220 m ²
<i>Excavated Orientation</i>	E to W
<i>Soil Make-up</i>	Ploughed topsoil – Dark greyish brown sandy clay loam with occasional small to large stone inclusions – 0.3 to 0.4 m; Colluvium– Medium brown clayey sand with some rounded stone inclusions – max depth 0.65 m
<i>Depth of Excavation</i>	0.9 m
<i>Significant Features</i>	None
<i>Other Features</i>	Furrow at 11m orientation N-S; Ce drain at 14m, 16m, orientation N-S; Rubble drain at 26m, 44m, 54m orientation N-S
<i>Natural Subsoil</i>	Pale orangey brown sandy clay with frequent gravel and stone inclusions.
<i>Finds</i>	None

Trench 81

<i>Dimensions</i>	70 m by 2.2 m
<i>Total Area</i>	154 m ²
<i>Excavated Orientation</i>	SE to NW
<i>Soil Make-up</i>	Ploughed topsoil – Dark greyish brown sandy clay loam with occasional small to large stone inclusions – 0.3 to 0.4 m;
<i>Depth of Excavation</i>	0.42 m
<i>Significant Features</i>	None
<i>Other Features</i>	Rubble drain at 27.8m orientation N-S
<i>Natural Subsoil</i>	Pale orangey brown sandy clay with frequent gravel and stone inclusions.
<i>Finds</i>	None

Trench 82

<i>Dimensions</i>	100 m by 2.2 m
<i>Total Area</i>	220 m ²
<i>Excavated Orientation</i>	W to E

<i>Soil Make-up</i>	Ploughed topsoil – Dark greyish brown sandy clay loam with occasional small to large stone inclusions – 0.3 to 0.4 m; Colluvium– Medium brown clayey sand with some rounded stone inclusions – max depth 0.65 m
<i>Depth of Excavation</i>	0.4 m
<i>Significant Features</i>	None
<i>Other Features</i>	Rubble drain at 25m, 43m orientation N-S; Ce drains at 13m, 15m, 23m, 34m, 42m, 62m, 69m
<i>Natural Subsoil</i>	Pale orangey brown sandy clay with frequent gravel and stone inclusions.
<i>Finds</i>	None

Trench 83

<i>Dimensions</i>	78 m by 2.2 m
<i>Total Area</i>	171 m ²
<i>Excavated Orientation</i>	N to S
<i>Soil Make-up</i>	Ploughed topsoil – Dark greyish brown sandy clay loam with occasional small to large stone inclusions – 0.3 to 0.4 m;
<i>Depth of Excavation</i>	0.53 m
<i>Significant Features</i>	None
<i>Other Features</i>	Rubble drain at 31m orientation NE - SW
<i>Natural Subsoil</i>	Pale orangey brown sandy clay with frequent gravel and stone inclusions.
<i>Finds</i>	None

Trench 84

<i>Dimensions</i>	100 m by 2.2 m
<i>Total Area</i>	220 m ²
<i>Excavated Orientation</i>	E to W
<i>Soil Make-up</i>	Ploughed topsoil – Dark greyish brown sandy clay loam with occasional small to large stone inclusions – 0.3 to 0.4 m;
<i>Depth of Excavation</i>	0.33 m
<i>Significant Features</i>	possible ditch at 82m
<i>Other Features</i>	Rubble drain at 59m, 70m orientation N-S; Ce drain at 14m, 21m, 40m, 42m, 61m, 63m, 68m, 70m, 89m orientation N-S
<i>Natural Subsoil</i>	Pale orangey brown sandy clay with frequent gravel and stone inclusions.
<i>Finds</i>	None

Trench 85

<i>Dimensions</i>	82 m by 2.2 m
<i>Total Area</i>	180 m ²
<i>Excavated Orientation</i>	NE -SW
<i>Soil Make-up</i>	Ploughed topsoil – Dark greyish brown sandy clay loam with occasional small to large stone inclusions – 0.3 to 0.4 m;
<i>Depth of Excavation</i>	0.49 m
<i>Significant Features</i>	None
<i>Other Features</i>	Rubble drain at 17m orientation N-S
<i>Natural Subsoil</i>	Pale orangey brown sandy clay with frequent gravel and stone inclusions.
<i>Finds</i>	None

Trench 86

<i>Dimensions</i>	100 m by 2.2 m
<i>Total Area</i>	220 m ²
<i>Excavated Orientation</i>	W to E
<i>Soil Make-up</i>	Ploughed topsoil – Dark greyish brown sandy clay loam with occasional small to large stone inclusions – 0.3 to 0.4 m;

<i>Depth of Excavation</i>	0.36 m
<i>Significant Features</i>	None
<i>Other Features</i>	Rubble drain at 31m, 40m, 50m orientation N-S, Ce drains at 2m, 22m, 29m, 35m, 38m, 48m, 57m, 54m, 69m
<i>Natural Subsoil</i>	Pale orangey brown sandy clay with frequent gravel and stone inclusions.
<i>Finds</i>	None

Trench 87

<i>Dimensions</i>	77 m by 2.2 m
<i>Total Area</i>	169 m ²
<i>Excavated Orientation</i>	SE to NW
<i>Soil Make-up</i>	Ploughed topsoil – Dark greyish brown sandy clay loam with occasional small to large stone inclusions – 0.3 to 0.4 m;
<i>Depth of Excavation</i>	0.43 m
<i>Significant Features</i>	None
<i>Other Features</i>	Rubble drain at 18m, 32m orientation N-S
<i>Natural Subsoil</i>	Pale orangey brown sandy clay with frequent gravel and stone inclusions.
<i>Finds</i>	None

Trench 88

<i>Dimensions</i>	100 m by 2.2 m
<i>Total Area</i>	220 m ²
<i>Excavated Orientation</i>	E to W
<i>Soil Make-up</i>	Ploughed topsoil – Dark greyish brown sandy clay loam with occasional small to large stone inclusions – 0.3 to 0.4 m;
<i>Depth of Excavation</i>	0.38 m
<i>Significant Features</i>	None
<i>Other Features</i>	Rubble drain at 81m orientation N-S, furrows at 21m, 36m, 61m orientation N-S; Ce drains at 9m, 18m, 29m, 34m, 51m, 55m, 64m, 74m orientation N-S
<i>Natural Subsoil</i>	Pale orangey brown sandy clay with frequent gravel and stone inclusions.
<i>Finds</i>	None

Trench 89

<i>Dimensions</i>	75 m by 2.2 m
<i>Total Area</i>	165 m ²
<i>Excavated Orientation</i>	SW to NE
<i>Soil Make-up</i>	Ploughed topsoil – Dark greyish brown sandy clay loam with occasional small to large stone inclusions – 0.3 to 0.4 m;
<i>Depth of Excavation</i>	0.45 m
<i>Significant Features</i>	None
<i>Other Features</i>	Rubble drain at 20 m orientation N-S
<i>Natural Subsoil</i>	Pale orangey brown sandy clay with frequent gravel and stone inclusions.
<i>Finds</i>	None

Trench 90

<i>Dimensions</i>	100 m by 2.2 m
<i>Total Area</i>	220 m ²
<i>Excavated Orientation</i>	NW to SE
<i>Soil Make-up</i>	Ploughed topsoil – Dark greyish brown sandy clay loam with occasional small to large stone inclusions – 0.3 to 0.4 m;
<i>Depth of Excavation</i>	0.38 m
<i>Significant Features</i>	None
<i>Other Features</i>	Rubble drain at 4m, 32m, 44m orientation N-S, Ce drains at 19m, 42m, 57m, 70m, 83m orientation N-S

Natural Subsoil Pale orangey brown sandy clay with frequent gravel and stone inclusions.
Finds None

Trench 91

Dimensions 77 m by 2.2 m
Total Area 169 m²
Excavated Orientation E to W
Soil Make-up Ploughed topsoil – Dark greyish brown sandy clay loam with occasional small to large stone inclusions – 0.3 to 0.4 m;
Depth of Excavation 0.45 m
Significant Features None
Other Features Rubble drain at 23m orientation N-S
Natural Subsoil Pale orangey brown sandy clay with frequent gravel and stone inclusions.
Finds None

Trench 92

Dimensions 80 m by 2.2 m
Total Area 176 m²
Excavated Orientation NW - SE
Soil Make-up Ploughed topsoil – Dark greyish brown sandy clay loam with occasional small to large stone inclusions – 0.3 to 0.4 m;
 Colluvium– Medium brown clayey sand with some rounded stone inclusions – max depth 0.4 m
Depth of Excavation 0.8 m
Significant Features None
Other Features Rubble drains at 2m, 15m, 53m, 26m, 70m, orientation N-S
Natural Subsoil Pale orangey brown sandy clay with frequent gravel and stone inclusions.
Finds None

Trench 93

Dimensions 78 m by 2.2 m
Total Area 171 m²
Excavated Orientation W to E
Soil Make-up Ploughed topsoil – Dark greyish brown sandy clay loam with occasional small to large stone inclusions – 0.3 to 0.4 m;
 Colluvium– Medium brown clayey sand with some rounded stone inclusions – max depth 0.4 m
Depth of Excavation 0.46 m
Significant Features None
Other Features Rubble drains at 25m orientation N-S
Natural Subsoil Pale orangey brown sandy clay with frequent gravel and stone inclusions.
Finds None

Trench 94

Dimensions 100 m by 2.2 m
Total Area 220 m²
Excavated Orientation S to N
Soil Make-up Ploughed topsoil – Dark greyish brown sandy clay loam with occasional small to large stone inclusions – 0.3 to 0.4 m;
 Colluvium– Medium brown clayey sand with some rounded stone inclusions – max depth 0.3 m
Depth of Excavation 0.5 m
Significant Features None
Other Features Rubble drain full length of trench, orientation N-S

Natural Subsoil Pale orangey brown sandy clay with frequent gravel and stone inclusions.
Finds Sherd of green glazed PMRD ceramic in the topsoil

Trench 95

Dimensions 79 m by 2.2 m
Total Area 173 m²
Excavated Orientation W to E
Soil Make-up Ploughed topsoil – Dark greyish brown sandy clay loam with occasional small to large stone inclusions – 0.3 to 0.4 m;
 Colluvium– Medium brown clayey sand with some rounded stone inclusions – max depth 0.4 m
Depth of Excavation 0.45 m
Significant Features None
Other Features Rubble drain at 26m orientation N-S
Natural Subsoil Pale orangey brown sandy clay with frequent gravel and stone inclusions.
Finds None

Trench 96

Dimensions 100 m by 2.2 m
Total Area 220 m²
Excavated Orientation S to N
Soil Make-up Ploughed topsoil – Dark greyish brown sandy clay loam with occasional small to large stone inclusions – 0.3 to 0.4 m;
 Colluvium– Medium brown clayey sand with some rounded stone inclusions – max depth 0.4 m
Depth of Excavation 0.5 m
Significant Features None
Other Features Rubble drain full length of trench orientation N-S also at 14m orientation E-W
Natural Subsoil Pale orangey brown sandy clay with frequent gravel and stone inclusions.
Finds None

Trench 97

Dimensions 77 m by 2.2 m
Total Area 169 m²
Excavated Orientation NW - SE
Soil Make-up Ploughed topsoil – Dark greyish brown sandy clay loam with occasional small to large stone inclusions – 0.3 to 0.4 m;
 Colluvium– Medium brown clayey sand with some rounded stone inclusions – max depth 0.4 m
Depth of Excavation 0.44 m
Significant Features None
Other Features Rubble drain at 27m, orientation N-S
Natural Subsoil Pale orangey brown sandy clay with frequent gravel and stone inclusions.
Finds None

Trench 98

Dimensions 100 m by 2.2 m
Total Area 220 m²
Excavated Orientation N to S
Soil Make-up Ploughed topsoil – Dark greyish brown sandy clay loam with occasional small to large stone inclusions – 0.3 to 0.4 m;
 Colluvium– Medium brown clayey sand with some rounded stone inclusions – max depth 0.4 m
Depth of Excavation 0.4 m

<i>Significant Features</i>	None
<i>Other Features</i>	plough scars N-S
<i>Natural Subsoil</i>	Pale orangey brown sandy clay with frequent gravel and stone inclusions.
<i>Finds</i>	None

Trench 99

<i>Dimensions</i>	80 m by 2.2 m
<i>Total Area</i>	176 m ²
<i>Excavated Orientation</i>	W to E
<i>Soil Make-up</i>	Ploughed topsoil – Dark greyish brown sandy clay loam with occasional small to large stone inclusions – 0.3 to 0.4 m; Colluvium– Medium brown clayey sand with some rounded stone inclusions – max depth 0.4 m
<i>Depth of Excavation</i>	0.49 m
<i>Significant Features</i>	None
<i>Other Features</i>	Rubble drains at 10m, 28m, 42m orientation N-S
<i>Natural Subsoil</i>	Pale orangey brown sandy clay with frequent gravel and stone inclusions.
<i>Finds</i>	None

Trench 100

<i>Dimensions</i>	100 m by 2.2 m
<i>Total Area</i>	220 m ²
<i>Excavated Orientation</i>	N to S
<i>Soil Make-up</i>	Ploughed topsoil – Dark greyish brown sandy clay loam with occasional small to large stone inclusions – 0.3 to 0.4 m; Colluvium– Medium brown clayey sand with some rounded stone inclusions – max depth 0.4 m
<i>Depth of Excavation</i>	0.35 m
<i>Significant Features</i>	None
<i>Other Features</i>	Rubble drain at 33m orientation E-W also plough scars
<i>Natural Subsoil</i>	Pale orangey brown sandy clay with frequent gravel and stone inclusions.
<i>Finds</i>	None

Trench 101

<i>Dimensions</i>	81 m by 2.2 m
<i>Total Area</i>	178 m ²
<i>Excavated Orientation</i>	W to E
<i>Soil Make-up</i>	Ploughed topsoil – Dark greyish brown sandy clay loam with occasional small to large stone inclusions – 0.3 to 0.4 m; Colluvium– Medium brown clayey sand with some rounded stone inclusions – max depth 0.4 m
<i>Depth of Excavation</i>	0.38 m
<i>Significant Features</i>	None
<i>Other Features</i>	Rubble drain at 28m, 38m orientation N-S
<i>Natural Subsoil</i>	Pale orangey brown sandy clay with frequent gravel and stone inclusions.
<i>Finds</i>	None

Trench 102

<i>Dimensions</i>	100 m by 2.2 m
<i>Total Area</i>	220 m ²
<i>Excavated Orientation</i>	S to N
<i>Soil Make-up</i>	Ploughed topsoil – Dark greyish brown sandy clay loam with occasional small to large stone inclusions – 0.3 to 0.4 m;

	Colluvium– Medium brown clayey sand with some rounded stone inclusions – max depth 0.4 m
<i>Depth of Excavation</i>	0.4 m
<i>Significant Features</i>	None
<i>Other Features</i>	plough scars orientation E-W
<i>Natural Subsoil</i>	Pale orangey brown sandy clay with frequent gravel and stone inclusions.
<i>Finds</i>	None

Trench 103

<i>Dimensions</i>	78 m by 2.2 m
<i>Total Area</i>	171 m ²
<i>Excavated Orientation</i>	W to E
<i>Soil Make-up</i>	Ploughed topsoil – Dark greyish brown sandy clay loam with occasional small to large stone inclusions – 0.3 to 0.4 m; Colluvium– Medium brown clayey sand with some rounded stone inclusions – max depth 0.4 m
<i>Depth of Excavation</i>	0.43 m
<i>Significant Features</i>	None
<i>Other Features</i>	Rubble drain at 30m orientation N-S
<i>Natural Subsoil</i>	Pale orangey brown sandy clay with frequent gravel and stone inclusions.
<i>Finds</i>	None

Trench 104

<i>Dimensions</i>	100 m by 2.2 m
<i>Total Area</i>	220 m ²
<i>Excavated Orientation</i>	S to N
<i>Soil Make-up</i>	Ploughed topsoil – Dark greyish brown sandy clay loam with occasional small to large stone inclusions – 0.3 to 0.4 m; Colluvium– Medium brown clayey sand with some rounded stone inclusions – max depth 0.4 m
<i>Depth of Excavation</i>	0.4 m
<i>Significant Features</i>	None
<i>Other Features</i>	None
<i>Natural Subsoil</i>	Pale orangey brown sandy clay with frequent gravel and stone inclusions.
<i>Finds</i>	None

Trench 105

<i>Dimensions</i>	73 m by 2.2 m
<i>Total Area</i>	160 m ²
<i>Excavated Orientation</i>	W to E
<i>Soil Make-up</i>	Ploughed topsoil – Dark greyish brown sandy clay loam with occasional small to large stone inclusions – 0.3 to 0.4 m; Colluvium– Medium brown clayey sand with some rounded stone inclusions – max depth 0.4 m
<i>Depth of Excavation</i>	0.49 m
<i>Significant Features</i>	None
<i>Other Features</i>	None
<i>Natural Subsoil</i>	Pale orangey brown sandy clay with frequent gravel and stone inclusions.
<i>Finds</i>	None

Trench 106

<i>Dimensions</i>	100 m by 2.2 m
<i>Total Area</i>	220 m ²
<i>Excavated Orientation</i>	NW to SE

<i>Soil Make-up</i>	Ploughed topsoil – Dark greyish brown sandy clay loam with occasional small to large stone inclusions – 0.3 to 0.4 m; Colluvium– Medium brown clayey sand with some rounded stone inclusions – max depth 0.4 m
<i>Depth of Excavation</i>	0.5 m
<i>Significant Features</i>	None
<i>Other Features</i>	Rubble drain at 14m, 32m, 62m, 74m, 100m orientation N-S; and N-S plough scars
<i>Natural Subsoil</i>	Pale orangey brown sandy clay with frequent gravel and stone inclusions.
<i>Finds</i>	None

Trench 107

<i>Dimensions</i>	70 m by 2.2 m
<i>Total Area</i>	154 m ²
<i>Excavated Orientation</i>	W to E
<i>Soil Make-up</i>	Ploughed topsoil – Dark greyish brown sandy clay loam with occasional small to large stone inclusions – 0.3 to 0.4 m; Colluvium– Medium brown clayey sand with some rounded stone inclusions – max depth 0.4 m
<i>Depth of Excavation</i>	0.46 m
<i>Significant Features</i>	None
<i>Other Features</i>	Rubble drain at 23m orientation N-S
<i>Natural Subsoil</i>	Pale orangey brown sandy clay with frequent gravel and stone inclusions.
<i>Finds</i>	None

Trench 108

<i>Dimensions</i>	100 m by 2.2 m
<i>Total Area</i>	220 m ²
<i>Excavated Orientation</i>	SE to NW
<i>Soil Make-up</i>	Ploughed topsoil – Dark greyish brown sandy clay loam with occasional small to large stone inclusions – 0.3 to 0.4 m; Colluvium– Medium brown clayey sand with some rounded stone inclusions – max depth 0.4 m
<i>Depth of Excavation</i>	0.35 m
<i>Significant Features</i>	None
<i>Other Features</i>	Rubble drain at 18m, 30m, 45m orientation N-S
<i>Natural Subsoil</i>	Pale orangey brown sandy clay with frequent gravel and stone inclusions.
<i>Finds</i>	None

Trench 109

<i>Dimensions</i>	91 m by 2.2 m
<i>Total Area</i>	200 m ²
<i>Excavated Orientation</i>	W to E
<i>Soil Make-up</i>	Ploughed topsoil – Dark greyish brown sandy clay loam with occasional small to large stone inclusions – 0.3 to 0.4 m; Colluvium– Medium brown clayey sand with some rounded stone inclusions – max depth 0.4 m
<i>Depth of Excavation</i>	0.45 m
<i>Significant Features</i>	None
<i>Other Features</i>	Rubble drain at 22m orientation N-S
<i>Natural Subsoil</i>	Pale orangey brown sandy clay with frequent gravel and stone inclusions.
<i>Finds</i>	None

Trench 110

<i>Dimensions</i>	100 m by 2.2 m
-------------------	----------------

<i>Total Area</i>	220 m ²
<i>Excavated Orientation</i>	SW to NE
<i>Soil Make-up</i>	Ploughed topsoil – Dark greyish brown sandy clay loam with occasional small to large stone inclusions – 0.3 to 0.4 m; Colluvium– Medium brown clayey sand with some rounded stone inclusions – max depth 0.4 m
<i>Depth of Excavation</i>	0.35 m
<i>Significant Features</i>	None
<i>Other Features</i>	Rubble drain at 2m, 31m, 41m, 50m, 53m, 59m, 70m, 78m orientation E-W
<i>Natural Subsoil</i>	Pale orangey brown sandy clay with frequent gravel and stone inclusions.
<i>Finds</i>	None

Trench 111

<i>Dimensions</i>	90 m by 2.2 m
<i>Total Area</i>	198 m ²
<i>Excavated Orientation</i>	W to E
<i>Soil Make-up</i>	Ploughed topsoil – Dark greyish brown sandy clay loam with occasional small to large stone inclusions – 0.3 to 0.4 m; Colluvium– Medium brown clayey sand with some rounded stone inclusions – max depth 0.4 m
<i>Depth of Excavation</i>	0.6 m
<i>Significant Features</i>	None
<i>Other Features</i>	Rubble drain at 12m orientation N-S
<i>Natural Subsoil</i>	Pale orangey brown sandy clay with frequent gravel and stone inclusions.
<i>Finds</i>	None

Trench 112

<i>Dimensions</i>	100 m by 2.2 m
<i>Total Area</i>	220 m ²
<i>Excavated Orientation</i>	NE to SW
<i>Soil Make-up</i>	Ploughed topsoil – Dark greyish brown sandy clay loam with occasional small to large stone inclusions – 0.3 to 0.4 m; Colluvium– Medium brown clayey sand with some rounded stone inclusions – max depth 0.4 m
<i>Depth of Excavation</i>	0.45 m
<i>Significant Features</i>	None
<i>Other Features</i>	Rubble drain at 7m, 26m, 38m, 47m, 59m, 76m, 85m, 95m orientation E-W
<i>Natural Subsoil</i>	Pale orangey brown sandy clay with frequent gravel and stone inclusions.
<i>Finds</i>	None

Trench 113

<i>Dimensions</i>	83 m by 2.2 m
<i>Total Area</i>	182 m ²
<i>Excavated Orientation</i>	W to E
<i>Soil Make-up</i>	Ploughed topsoil – Dark greyish brown sandy clay loam with occasional small to large stone inclusions – 0.3 to 0.4 m; Colluvium– Medium brown clayey sand with some rounded stone inclusions – max depth 0.4 m
<i>Depth of Excavation</i>	0.55 m
<i>Significant Features</i>	None
<i>Other Features</i>	Rubble drain a 8m orientation N-S
<i>Natural Subsoil</i>	Pale orangey brown sandy clay with frequent gravel and stone inclusions.
<i>Finds</i>	None

Trench 114

<i>Dimensions</i>	100 m by 2.2 m
<i>Total Area</i>	220 m ²
<i>Excavated Orientation</i>	NE to SW
<i>Soil Make-up</i>	Ploughed topsoil – Dark greyish brown sandy clay loam with occasional small to large stone inclusions – 0.0 to 0.3 m; Colluvium – dark brown clayey sand with abundant rounded stone inclusions – max depth 0.1 m
<i>Depth of Excavation</i>	0.4 m
<i>Significant Features</i>	None
<i>Other Features</i>	Stone field drains at 9 m; 19 m; 38 m; 48 m; 58 m; 70 m; 80 m; 90 m and 100 m from the SW end of the trench, all aligned E-W. Plough scars aligned N-S.
<i>Natural Subsoil</i>	Pale orangey brown sandy clay with frequent gravel and stone inclusions
<i>Finds</i>	None

Trench 115

<i>Dimensions</i>	75 m by 2.2 m
<i>Total Area</i>	165 m ²
<i>Excavated Orientation</i>	E to W
<i>Soil Make-up</i>	Ploughed topsoil – Dark greyish brown sandy clay loam with occasional small to large stone inclusions – 0.2 to 0.25 m. Colluvium – dark brown clayey sand with abundant rounded stone inclusions – max depth 0.1 m
<i>Depth of Excavation</i>	0.36 m
<i>Significant Features</i>	None
<i>Other Features</i>	Stone rubble drain at 1.35 m from west end and aligned N-S
<i>Natural Subsoil</i>	Pale orangey brown sandy clay with frequent gravel and stone inclusions, some sand at east end of the trench.
<i>Finds</i>	None

Trench 116

<i>Dimensions</i>	100 m by 2.2 m
<i>Total Area</i>	220 m ²
<i>Excavated Orientation</i>	NE to SW
<i>Soil Make-up</i>	Ploughed topsoil – Dark greyish brown sandy clay loam with occasional small to large stone inclusions – 0.35 to 0.45 m. Colluvium – dark brown clayey sand with abundant rounded stone inclusions – max depth 0.1 m
<i>Depth of Excavation</i>	0.55 m
<i>Significant Features</i>	Stone drain at 70 m from NE end which is of a different construction from the other uncovered field drains and is probably much older. It is aligned E-W, 0.6 m wide and composed of rounded stones, with terminal in the middle of the trench.
<i>Other Features</i>	Plough scars aligned N-S. Stone field drains, approximately 0.2 to 0.3 m wide, at 10 m; 20 m; 30 m; 40 m; 50 m; 62 m; 70 m; 73 m; 86 m; 91 m; and 100 m from NE end, aligned E-W.
<i>Natural Subsoil</i>	Pale orangey brown sandy clay with frequent gravel and stone inclusions
<i>Finds</i>	None

Trench 117

<i>Dimensions</i>	101 m by 2.2 m
<i>Total Area</i>	222.2 m ²
<i>Excavated Orientation</i>	N to S
<i>Soil Make-up</i>	Ploughed topsoil – Dark greyish brown sandy clay loam with occasional small to large stone inclusions – 0.32 to 0.34 m. Colluvium – dark brown clayey sand with abundant rounded stone inclusions – max depth 0.1 m
<i>Depth of Excavation</i>	0.46 m

<i>Significant Features</i>	None
<i>Other Features</i>	Rubble drains at 4.20 m, aligned E-W, and 92.10 m, aligned NW-SE from S end of the trench
<i>Natural Subsoil</i>	Pale orangey brown sandy clay with frequent gravel and stone inclusions
<i>Finds</i>	None

Trench 118

<i>Dimensions</i>	100 m by 2.2 m
<i>Total Area</i>	220 m ²
<i>Excavated Orientation</i>	NE to SW
<i>Soil Make-up</i>	Ploughed topsoil – Dark greyish brown sandy clay loam with occasional small to large stone inclusions – 0.3 to 0.4 m. Colluvium – dark brown clayey sand with abundant rounded stone inclusions – max depth 0.1 m.
<i>Depth of Excavation</i>	0.5 m
<i>Significant Features</i>	None
<i>Other Features</i>	Stone field drains, approximately 0.3 m wide, at 5.0 m; 15 m; 26 m; 36 m; 47 m; 58 m; 69 m; 80 m and 90 m from SW end of the trench and aligned E-W.
<i>Natural Subsoil</i>	Pale orangey brown sandy clay with frequent gravel and stone inclusions
<i>Finds</i>	None

Trench 119

<i>Dimensions</i>	101 m by 2.2 m
<i>Total Area</i>	222.2 m ²
<i>Excavated Orientation</i>	N to S
<i>Soil Make-up</i>	Ploughed topsoil – Dark greyish brown sandy clay loam with occasional small to large stone inclusions – 0.2 to 0.29 m. Colluvium – dark brown clayey sand with abundant rounded stone inclusions – max depth 0.1 m.
<i>Depth of Excavation</i>	0.4 m
<i>Significant Features</i>	None
<i>Other Features</i>	None
<i>Natural Subsoil</i>	Pale orangey brown sandy clay with frequent gravel and stone inclusions
<i>Finds</i>	None

Trench 120

<i>Dimensions</i>	50 m by 2.2 m
<i>Total Area</i>	110 m ²
<i>Excavated Orientation</i>	N to S
<i>Soil Make-up</i>	Ploughed topsoil – Dark greyish brown sandy clay loam with occasional small to large stone inclusions – 0.25 m. Colluvium – dark brown clayey sand with abundant rounded stone inclusions – max depth 0.1 m.
<i>Depth of Excavation</i>	0.35 m
<i>Significant Features</i>	None
<i>Other Features</i>	N-S aligned plough scars. Stone field drains at 5 m; 14 m; 24 m; 34 m; and 44 m from SW end, all aligned E-W.
<i>Natural Subsoil</i>	Pale orangey brown sandy clay with frequent gravel and stone inclusions
<i>Finds</i>	None

Trench 121

<i>Dimensions</i>	67 m by 2.2 m
<i>Total Area</i>	147.4 m ²
<i>Excavated Orientation</i>	SSW to NNE
<i>Soil Make-up</i>	Ploughed topsoil – Dark greyish brown sandy clay loam with occasional small to large stone inclusions – 0.19 to 0.38 m. Colluvium – dark brown clayey sand with abundant rounded stone inclusions – max depth 0.1 m.
<i>Depth of Excavation</i>	0.49 m

<i>Significant Features</i>	None
<i>Other Features</i>	None
<i>Natural Subsoil</i>	Pale orangey brown sandy clay with frequent gravel and stone inclusions.
<i>Finds</i>	None

Trench 122

<i>Dimensions</i>	60 m by 2.2 m
<i>Total Area</i>	132 m ²
<i>Excavated Orientation</i>	E to W
<i>Soil Make-up</i>	Ploughed topsoil – Dark greyish brown sandy clay loam with occasional small to large stone inclusions – 0.25 to 0.45 m. Colluvium – dark brown clayey sand with abundant rounded stone inclusions – max depth 0.1 m- 0.2 m.
<i>Depth of Excavation</i>	0.65 m
<i>Significant Features</i>	None
<i>Other Features</i>	Stone field drains between 3 m - 12 m and 40 m - 55 m from west end of the trench, aligned NNE-SSW
<i>Natural Subsoil</i>	Pale orangey brown sandy clay with frequent gravel and stone inclusions
<i>Finds</i>	None

Trench 123

<i>Dimensions</i>	28.30 m by 2.2 m
<i>Total Area</i>	62.26 m ²
<i>Excavated Orientation</i>	NNE-SSW
<i>Soil Make-up</i>	Ploughed topsoil – Dark greyish brown sandy clay loam with occasional small to large stone inclusions – 0.26 to 0.36 m Colluvium – dark brown clayey sand with abundant rounded stone inclusions – max depth 0.1 m.
<i>Depth of Excavation</i>	0.52 m
<i>Significant Features</i>	None
<i>Other Features</i>	None
<i>Natural Subsoil</i>	Pale orangey brown sandy clay with frequent gravel and stone inclusions.
<i>Finds</i>	None

Trench 124

<i>Dimensions</i>	60 m by 2.2 m
<i>Total Area</i>	132 m ²
<i>Excavated Orientation</i>	NE to SW
<i>Soil Make-up</i>	Ploughed topsoil – Dark greyish brown sandy clay loam with occasional small to large stone inclusions – 0.25 to 0.3 m. Colluvium – dark brown clayey sand with abundant rounded stone inclusions – max depth 0.1 m.
<i>Depth of Excavation</i>	0.4 m
<i>Significant Features</i>	None
<i>Other Features</i>	Two pits at 35 m and 40 m from NE end, with inclusions of modern pottery. Stone field drains at 12 m; 22 m; 34 m and 45 m from NE end of the trench, aligned E-W. Ceramic drains at 24 m and 35 m from NE end of the trench and aligned E-W.
<i>Natural Subsoil</i>	Pale orangey brown sandy clay with frequent gravel and stone inclusions.
<i>Finds</i>	None

Trench 125

<i>Dimensions</i>	82 m by 2.2 m
<i>Total Area</i>	180.4 m ²
<i>Excavated Orientation</i>	NNE to SSW
<i>Soil Make-up</i>	Ploughed topsoil – Dark greyish brown sandy clay loam with occasional small to large stone inclusions – 0.31 to 0.42 m. Colluvium – dark brown clayey sand with abundant rounded stone inclusions – max depth 0.1 m.

<i>Depth of Excavation</i>	0.59 m
<i>Significant Features</i>	None
<i>Other Features</i>	None
<i>Natural Subsoil</i>	Pale orangey brown sandy clay with frequent gravel and stone inclusions.
<i>Finds</i>	None

Trench 127

<i>Dimensions</i>	72 m by 2.2 m
<i>Total Area</i>	220 m ²
<i>Excavated Orientation</i>	NNE to SSW
<i>Soil Make-up</i>	Ploughed topsoil – Dark greyish brown sandy clay loam with occasional small to large stone inclusions – 0.30 to 0.32 m. Colluvium – dark brown clayey sand with abundant rounded stone inclusions – max depth 0.1 m.

<i>Depth of Excavation</i>	0.43 m
<i>Significant Features</i>	None
<i>Other Features</i>	None
<i>Natural Subsoil</i>	Pale orangey brown sandy clay with frequent gravel and stone inclusions.
<i>Finds</i>	None

Trench 129

<i>Dimensions</i>	99 m by 2.2 m
<i>Total Area</i>	217.8 m ²
<i>Excavated Orientation</i>	NE to SW
<i>Soil Make-up</i>	Ploughed topsoil – Dark greyish brown sandy clay loam with occasional small to large stone inclusions – 0.23 to 0.33 m. Colluvium – dark brown clayey sand with abundant rounded stone inclusions – max depth 0.1 m.

<i>Depth of Excavation</i>	0.52 m
<i>Significant Features</i>	None
<i>Other Features</i>	Rubble drains at 32.30 m aligned, NE-SW, and 58.20 m, aligned E-W, from NE end of the trench. Ceramic drain at 4.80 m from NE end of the trench, aligned E-W.
<i>Natural Subsoil</i>	Pale orangey brown sandy clay with frequent gravel and stone inclusions.
<i>Finds</i>	None

Trench 131

<i>Dimensions</i>	56 m by 2.2 m
<i>Total Area</i>	123.2 m ²
<i>Excavated Orientation</i>	NE to SW
<i>Soil Make-up</i>	Ploughed topsoil – Dark greyish brown sandy clay loam with occasional small to large stone inclusions – 0.25 to 0.36 m. Colluvium – dark brown clayey sand with abundant rounded stone inclusions – max depth 0.1 m.

<i>Depth of Excavation</i>	0.42 m
<i>Significant Features</i>	None
<i>Other Features</i>	None
<i>Natural Subsoil</i>	Pale orangey brown sandy clay with frequent gravel and stone inclusions.
<i>Finds</i>	None

Trench 133

<i>Dimensions</i>	95 m by 2.2 m
<i>Total Area</i>	209 m ²
<i>Excavated Orientation</i>	NW to SE
<i>Soil Make-up</i>	Ploughed topsoil – Dark greyish brown sandy clay loam with occasional small to large stone inclusions – 0.28 to 0.34 m. Colluvium – dark brown clayey sand with abundant rounded stone inclusions – max depth 0.1 m.

<i>Depth of Excavation</i>	0.45 m
----------------------------	--------

<i>Significant Features</i>	None
<i>Other Features</i>	Rubble drain at 33.20 m from SE end, aligned NW-SE
<i>Natural Subsoil</i>	Pale orangey brown sandy clay with frequent gravel and stone inclusions.
<i>Finds</i>	None
Trench 135	
<i>Dimensions</i>	101 m by 2.2 m
<i>Total Area</i>	222.2 m ²
<i>Excavated Orientation</i>	N-S
<i>Soil Make-up</i>	Ploughed topsoil – Dark greyish brown sandy clay loam with occasional small to large stone inclusions – 0.25 to 0.3 m. Colluvium – dark brown clayey sand with abundant rounded stone inclusions – max depth 0.1 m.
<i>Depth of Excavation</i>	0.52 m
<i>Significant Features</i>	None
<i>Other Features</i>	Rubble drains at 19.56 m; 29.10 m and 76.10 from south end and aligned E-W.
<i>Natural Subsoil</i>	Pale orangey brown sandy clay with frequent gravel and stone inclusions. Some areas of very large stone or bedrock
<i>Finds</i>	None
Trench 137	
<i>Dimensions</i>	102 m by 2.2 m
<i>Total Area</i>	224.4 m ²
<i>Excavated Orientation</i>	N to S
<i>Soil Make-up</i>	Ploughed topsoil – Dark greyish brown sandy clay loam with occasional small to large stone inclusions – 0.29 to 0.38 m. Colluvium – dark brown clayey sand with abundant rounded stone inclusions – max depth 0.1 m.
<i>Depth of Excavation</i>	0.42 m
<i>Significant Features</i>	None
<i>Other Features</i>	None
<i>Natural Subsoil</i>	Pale orangey brown sandy clay with frequent gravel and stone inclusions.
<i>Finds</i>	None
Trench 139	
<i>Dimensions</i>	101 m by 2.2 m
<i>Total Area</i>	222.2 m ²
<i>Excavated Orientation</i>	SE to NW
<i>Soil Make-up</i>	Ploughed topsoil – Dark greyish brown sandy clay loam with occasional small to large stone inclusions – 0.26 to 0.31 m. Colluvium – dark brown clayey sand with abundant rounded stone inclusions – max depth 0.1 m.
<i>Depth of Excavation</i>	0.46 m
<i>Significant Features</i>	None
<i>Other Features</i>	None
<i>Natural Subsoil</i>	Pale orangey brown sandy clay with frequent gravel and stone inclusions.
<i>Finds</i>	None
Trench 141	
<i>Dimensions</i>	55 m by 2.2 m
<i>Total Area</i>	121 m ²
<i>Excavated Orientation</i>	SE to NW
<i>Soil Make-up</i>	Ploughed topsoil – Dark greyish brown sandy clay loam with occasional small to large stone inclusions – 0.26 to 0.31 m. Colluvium – dark brown clayey sand with abundant rounded stone inclusions – max depth 0.1 m.
<i>Depth of Excavation</i>	0.49 m
<i>Significant Features</i>	None

<i>Other Features</i>	None
<i>Natural Subsoil</i>	Pale orangey brown sandy clay with frequent gravel and stone inclusions
<i>Finds</i>	None
Trench 143	
<i>Dimensions</i>	100 m by 2.2 m
<i>Total Area</i>	220 m ²
<i>Excavated Orientation</i>	E to W
<i>Soil Make-up</i>	Ploughed topsoil – Dark greyish brown sandy clay loam with occasional small to large stone inclusions – 0.23 to 0.38 m. Colluvium – dark brown clayey sand with abundant rounded stone inclusions – max depth 0.1 m.
<i>Depth of Excavation</i>	0.49 m
<i>Significant Features</i>	None
<i>Other Features</i>	Ditch/ furrow at 4.2 m from east end, aligned NW-SE. Rubble drains at 31.2 m aligned W-E and at 83.1 m, aligned NW-SE.
<i>Natural Subsoil</i>	Pale orangey brown sandy clay with frequent gravel and stone inclusions.
<i>Finds</i>	None
Trench 145	
<i>Dimensions</i>	100 m by 2.2 m
<i>Total Area</i>	220 m ²
<i>Excavated Orientation</i>	E to W
<i>Soil Make-up</i>	Ploughed topsoil – Dark greyish brown sandy clay loam with occasional small to large stone inclusions – 0.25 to 0.38 m. Colluvium – dark brown clayey sand with abundant rounded stone inclusions – max depth 0.1 m.
<i>Depth of Excavation</i>	0.46 m
<i>Significant Features</i>	None
<i>Other Features</i>	Rubble drains at 31.20 m and 80.90 m from east end, aligned NE-SW
<i>Natural Subsoil</i>	Pale orangey brown sandy clay with frequent gravel and stone inclusions.
<i>Finds</i>	None
Trench 147	
<i>Dimensions</i>	100 m by 2.2 m
<i>Total Area</i>	220 m ²
<i>Excavated Orientation</i>	E to W
<i>Soil Make-up</i>	Ploughed topsoil – Dark greyish brown sandy clay loam with occasional small to large stone inclusions – 0.27 to 0.39 m. Colluvium – dark brown clayey sand with abundant rounded stone inclusions – max depth 0.1 m.
<i>Depth of Excavation</i>	0.48 m
<i>Significant Features</i>	None
<i>Other Features</i>	None
<i>Natural Subsoil</i>	Pale orangey brown sandy clay with frequent gravel and stone inclusions.
<i>Finds</i>	None
Trench 149	
<i>Dimensions</i>	101 m by 2.2 m
<i>Total Area</i>	222.2 m ²
<i>Excavated Orientation</i>	E to W
<i>Soil Make-up</i>	Ploughed topsoil – Dark greyish brown sandy clay loam with occasional small to large stone inclusions – 0.28 to 0.31 m. Colluvium – dark brown clayey sand with abundant rounded stone inclusions – max depth 0.1 m.
<i>Depth of Excavation</i>	0.42 m
<i>Significant Features</i>	None
<i>Other Features</i>	Rubble drain at 33.90 m from east end aligned NE-SW

<i>Natural Subsoil</i>	Pale orangey brown sandy clay with frequent gravel and stone inclusions.
<i>Finds</i>	None
Trench 151	
<i>Dimensions</i>	78 m by 2.2 m
<i>Total Area</i>	171.6 m ²
<i>Excavated Orientation</i>	E to W
<i>Soil Make-up</i>	Ploughed topsoil – Dark greyish brown sandy clay loam with occasional small to large stone inclusions – 0.29 to 0.32 m; Colluvium – dark brown clayey sand with abundant rounded stone inclusions – max depth 0.1 m.
<i>Depth of Excavation</i>	0.42 m
<i>Significant Features</i>	None
<i>Other Features</i>	Rubble drain at 37.50 m from east end aligned NE-SW
<i>Natural Subsoil</i>	Pale orangey brown sandy clay with frequent gravel and stone inclusions.
<i>Finds</i>	None
Trench 153	
<i>Dimensions</i>	34 m by 2.2 m
<i>Total Area</i>	74.8 m ²
<i>Excavated Orientation</i>	N to S
<i>Soil Make-up</i>	Ploughed topsoil – Dark greyish brown sandy clay loam with occasional small to large stone inclusions – 0.31 to 0.33 m; Colluvium – dark brown clayey sand with abundant rounded stone inclusions – max depth 0.1 m.
<i>Depth of Excavation</i>	0.48 m
<i>Significant Features</i>	None
<i>Other Features</i>	Rubble drain at 29.10 m from north end aligned NW-SE
<i>Natural Subsoil</i>	Pale orangey brown sandy clay with frequent gravel and stone inclusions.
<i>Finds</i>	None
Trench 155	
<i>Dimensions</i>	71.40 m by 2.2 m
<i>Total Area</i>	157.08 m ²
<i>Excavated Orientation</i>	W to S
<i>Soil Make-up</i>	Ploughed topsoil – Dark greyish brown sandy clay loam with occasional small to large stone inclusions – 0.28 m to 0.38 m; Colluvium – dark brown clayey sand with abundant rounded stone inclusions – max depth 0.1 m.
<i>Depth of Excavation</i>	0.52 m
<i>Significant Features</i>	None
<i>Other Features</i>	None
<i>Natural Subsoil</i>	Pale orangey brown sandy clay with frequent gravel and stone inclusions.
<i>Finds</i>	None
Trench 157	
<i>Dimensions</i>	80 m by 2.2 m
<i>Total Area</i>	176 m ²
<i>Excavated Orientation</i>	E to W
<i>Soil Make-up</i>	Ploughed topsoil – Dark greyish brown sandy clay loam with occasional small to large stone inclusions – 0.3 m to 0.35 m; Colluvium – dark brown clayey sand with abundant rounded stone inclusions – max depth 0.1 m.
<i>Depth of Excavation</i>	0.48 m
<i>Significant Features</i>	None
<i>Other Features</i>	None
<i>Natural Subsoil</i>	Pale orangey brown sandy clay with frequent gravel and stone inclusions.
<i>Finds</i>	None

Trench 159

<i>Dimensions</i>	40 m by 2.2 m
<i>Total Area</i>	88 m ²
<i>Excavated Orientation</i>	NE to SW
<i>Soil Make-up</i>	Ploughed topsoil – Dark greyish brown sandy clay loam with occasional small to large stone inclusions – 0.18 to 0.35 m; Colluvium – dark brown clayey sand with abundant rounded stone inclusions – max depth 0.1 m.
<i>Depth of Excavation</i>	0.57 m
<i>Significant Features</i>	None
<i>Other Features</i>	Rubble drain at 34.0 m from SW end aligned E-W
<i>Natural Subsoil</i>	Pale orangey brown sandy clay with frequent gravel and stone inclusions.
<i> Finds</i>	None

APPENDIX 2: Context Register

Context No.	Area	Description and Interpretation
901	B-T9	Sub-circular pit with moderate sides onto a flat base. Filled with deposits [902], [903] and [904] measuring 3.75 m by 5.65 m by 0.26 m. Cuts natural clay seam and overlain by plough soil similar to upper fill [904]. Possible prehistoric pit
902	B-T9	Dark grey silty clay with frequent charcoal flecks measuring 4 m by 1.82 m by 0.14 m. Primary fill of pit [901]
903	B-T9	Mid to dark yellow sandy clay with rare charcoal fleck inclusions. Colour indicates a possibly heat affected deposit measuring 3.75 m by 6 m by 0.16 m. Secondary fill of pit [901]
904	B-T9	Dark brown silty clay with rare medium stone inclusions similar to early plough soil. Cut by rubble drain. Measures 6 m by 4 m by 0.1 m. Upper fill of pit [901]
2901	B-29	Linear cut aligned N-S with steep sides and a concave base. Filled with deposit [2902]. Measures 0.96 m wide by 0.31 m deep. Continues into Trench 31 Possible post medieval field boundary
2902	B-29	Mid brown sandy clay with frequent stone inclusions. Red tile ceramics and oyster shell within the fill (not retained). 0.96 m wide by 0.31 m deep. Fill of ditch [2901]
3501	B-35	Linear cut aligned N-S (possibly continuation of ditch [2901]) measuring 1.8 m wide. Filled by [3502]. Possible post medieval field boundary
3502	B-35	Dark brown sandy clay with abundant stone inclusions. Coal flecks and white Ce present. Measures 1.3 m wide. Fill of ditch [3501]
4701	B-T47	Linear cut aligned SSE-NNW terminating at its NNW end. Cut has moderate sides onto a concave base. Measures 2.25 m by 0.56 m by 0.08 m. Filled by deposit [4702] and associated with pits [4703] and [4705]. Probable ditch of prehistoric round house
4702	B-T47	Compact mid to dark brown silty clay with frequent charcoal flecks and occasional small to medium stone inclusions. Measures 2.25 m by 0.56 m by 0.08 m. Fill of ditch [4701]
4703	B-T47	Circular pit with steep sides and a concave base filled by deposit [4704]. Measures 0.3 m by 0.29 m by 0.12 m. Probable prehistoric pit
4704	B-T47	Dark brown sandy silty clay with abundant charcoal flecks and fragment inclusions measuring 0.3 m by 0.29 m by 0.08 m. Fill of pit [4703]
4705	B-T47	Sub-circular cut NE of [4703] measuring 0.39 m by 0.2 m. Probable prehistoric pit
4706	B-T47	Dark brown sandy silty clay with abundant charcoal flecks and fragment inclusions

		measuring 0.39 m by 0.2 m. Fill of pit [4705]
4901	B-T49	Curvilinear cut [4901] aligned SW-NE and terminating at NE end. Filled by deposit [4902]. Associated with ditch [4903]. Measures 2.5 m by 0.25 m. Probable ditch of prehistoric round house
4902	B-T49	Compact mid to dark brown silty clay with frequent charcoal flecks and occasional small to medium stone inclusions. Measures 2.5 m by 0.25 m. Fill of ditch [4901]
4903	B-T49	Curvilinear cut [4903] aligned SE-NW and terminating at NW end. Filled by deposit [4904]. Associated with ditch [4901]. Measures 4 m by 0.25 m. Probable ditch of prehistoric round house
4904	B-T49	Compact mid to dark brown silty clay with frequent charcoal flecks and occasional small to medium stone inclusions. Measures 4 m by 0.25 m. Fill of ditch [4903]
5101	B-T51	Linear cut aligned NE-SW measuring 0.7 m wide. Parallel and adjacent to ditch [5103]. Filled by deposit [5102]. Possible enclosure ditch
5102	B-T51	Compact mid to dark brown silty clay with frequent charcoal flecks and occasional small to medium stone inclusions. Measures 0.7 m wide. Fill of ditch [5101]
5103	B-T51	Linear cut aligned NE-SW with steep sides and a flat base measuring 0.73 m wide by 0.12 m deep. Filled by deposit [5104]. Parallel and adjacent to ditch [5101]. Possible enclosure ditch
5104	B-T51	Compact mid to dark brown silty clay with frequent charcoal flecks and occasional small to medium stone inclusions. Measures 0.73 m by 0.12 m. Fill of ditch [5103]
5105	B-T51	Linear cut aligned NW-SE measuring 0.85 m wide and filled by deposit [5106]. Probable prehistoric ditch
5106	B-T51	Compact mid to dark brown silty clay with frequent charcoal flecks and occasional small to medium stone inclusions. Measures 0.85 m wide. Fill of ditch [5105]
5107	B-T51	Linear cut with moderately sloping sides and a flat base aligned NE-SW and measuring 0.35 m wide by 0.05 m deep. Probable prehistoric ditch
5108	B-T51	Compact mid to dark brown silty clay with frequent charcoal flecks and occasional small to medium stone inclusions. Fill of ditch [5107]
5109	B-T51	Linear cut aligned NW-SE measuring 0.7 m. Filled by deposit [5110]. Probable prehistoric ditch
5110	B-T51	Compact mid to dark brown silty clay with frequent charcoal flecks and occasional small to medium stone inclusions. Measures 0.7 m wide. Fill of ditch [5109]
5111	B-T51	Linear cut aligned NW-SE and terminating at its SE end. Measures 2.4 m by 0.5 m. Filled by deposit [5112]. Probable prehistoric ring ditch
5112	B-T51	Compact mid to dark brown silty clay with frequent charcoal flecks and occasional small to medium stone inclusions. Measures 2.4 m by 0.5 m Fill of ditch [5111]
5113	B-T51	Linear cut aligned NE-SW measuring 0.4 m wide and filled by deposit [5114]. Probable prehistoric ditch
5114	B-T51	Compact mid to dark brown silty clay with frequent charcoal flecks and occasional small to medium stone inclusions. Measures 0.4 m wide. Fill of ditch [5114]
5301	B-T53	Linear cut aligned NNE-SSW measuring 1.15 m wide and filled by deposit [5302]. Most likely relates to ditch [5101] Possible enclosure ditch
5302	B-T53	Compact mid to dark brown silty clay with frequent charcoal flecks and occasional small to medium stone inclusions. Measures 1.15 m wide. Fill of ditch [5301]
5303	B-T53	Linear cut aligned NNE-SSW measuring 0.85 m wide and filled by deposit [5304]. Most likely relates to ditch [5103]. Possible enclosure ditch

5304	B-T53	Compact mid to dark brown silty clay with frequent charcoal flecks and occasional small to medium stone inclusions. Measures 0.85 m wide. Fill of ditch [5303]
5305	B-T53	Semi-circular edge of a cut feature measuring 8.15 m by 1.3 m. Exposed on S edge of trench and filled by deposit [5306]. Possible pit or sunken feature
5306	B-T53	Compact mid to dark brown silty clay with frequent charcoal flecks and occasional small to medium stone inclusions. Larger stones within deposit along the edge of the cut. Measures 8.15 m by 1.3 m. Fill of pit [5305]
5307	N/A	Void
5308	N/A	Void
5309	N/A	Void
5310	B-T53	Linear cut aligned NNE-SSW adjacent to possible enclosure ditch [5303] and terminating at its SSW end. Measures 2.5 m by 0.55 m. Filled by deposit [5311]. Probable prehistoric ring ditch
5311	B-T53	Compact mid to dark brown silty clay with frequent charcoal flecks and occasional small to medium stone inclusions. Measures 2.5 m by 0.55 m. Fill of ditch [5310]
7201	B-T72	Linear cut with moderately sloping sides and a concave base aligned SW-NE. Measures 1.15 m wide by 0.22 m deep. Cuts the sandy clay natural. May not be related to the prehistoric features in the remainder of the trench. Ditch of unknown date (probably post medieval)
7202	B-T72	Mid greyish brown sandy clay with frequent stone inclusions. Measures 1.15 m by 0.22 m. Fill of ditch [7201]
7203	B-T72	Linear cut with steeply sloping sides onto a flattish base aligned ENE-WSW, terminating at its ENE end. Measures 2.5 m by 0.5 m by 0.12 m. Probable prehistoric ring ditch
7204	B-T72	Compact mid to dark brown silty clay with frequent charcoal flecks and occasional small to medium stone inclusions. Measures 2.5 m by 0.5 m by 0.12 m. Fill of ditch [7203]
7205	B-T72	Curvilinear ditch forming an arc within Trench 72 continuing under the N edge of Trench 72. Top of arc under S edge. Measures 9 m diameter by 1.2 m wide. Probably related to ditches [4901] and [4903]. Probable ditch of prehistoric round house
7206	B-T72	Compact mid to dark brown silty clay with frequent charcoal flecks and occasional small to medium stone inclusions. Measures 9 m diameter by 1.2 m wide. Fill of ditch [7205]
7207	N/A	Void
7208	N/A	Void
7209	B-T72	Linear cut aligned N-S, filled by deposit [7210] and terminating at its N end. Measures 1 m by 0.7 m. Probable prehistoric ring ditch
7210	B-T72	Compact mid to dark brown silty clay with frequent charcoal flecks and occasional small to medium stone inclusions. Measures 1 m by 0.7 m. Fill of ditch [7209]
7211	B-T72	Linear cut aligned NE-SW terminating at its NE end and measuring 3.6 m by 0.6 m. Cuts deposit [7210]. Probable prehistoric ring ditch
7212	B-T72	Compact mid to dark brown silty clay with frequent charcoal flecks and occasional small to medium stone inclusions. Measures 3.6 m by 0.6 m. Fill of ditch [7211]
7401	B-T74	Linear cut with moderate sides and a flat base aligned NW-SE. Similar in shape and width to ditch [7201]. Filled by deposit [7402]. Measures 1.45 m by 0.12 m. Ditch of unknown date (probably post medieval)
7402	B-T74	Mid greyish brown sandy clay with frequent stone inclusions and rare coal flecks. Measures 1.45 m by 0.22 m. Fill of ditch [7401]
7601	B-T76	Linear cut aligned SSW-NNE terminating at NNE end. Measures 1.6 m by 0.4 m and is filled by deposit [7602]. Probable prehistoric ring ditch
7602	B-T76	Compact dark brown sandy silt with frequent charcoal flecks and occasional small to

		medium stone inclusions. Measures 1.6 m by 0.4 m. Fill of ditch [7601]
7603	B-T76	Linear cut with moderate sides and a concave base aligned E-W running parallel to and immediately S of ditch [7605] (South). Filled by deposit [7604] and measures 2.75 m by 0.65 m by 0.14 m. Probable prehistoric ring ditch
7604	B-T76	Compact dark brown sandy silt with frequent charcoal flecks and occasional small to medium stone inclusions. Measures 2.75 m by 0.65 m by 0.14 m. Fill of ditch [7601]
7605	B-T76	Linear cut with steep sides and a concave base aligned E-W running parallel to and immediately N of ditch [7603]. Filled by deposit [7604] and measures 2.75 m by 0.55 m by 0.16 m. Probable prehistoric ring ditch
7606	B-T76	Compact dark brown sandy silt with frequent charcoal flecks and occasional small to medium stone inclusions. Measures 2.75 m by 0.55 m by 0.16 m. Fill of ditch [7605]
7607	B-T76	Linear cut aligned E-W, located between ditches [7605] and [7609] and filled by deposit [7608]. Measures 2.5 m by 0.25 m. Probable prehistoric ring ditch
7608	B-T76	Compact dark brown sandy silt with frequent charcoal flecks and occasional small to medium stone inclusions. Measures 2.5 m by 0.25 m. Fill of ditch [7607]
7609	B-T76	Linear cut aligned E-W filled by deposit [7610] and measures 2.5 m by 1 m. Probable prehistoric enclosure ditch
7610	B-T76	Compact dark brown sandy silt with frequent charcoal flecks and occasional small to medium stone inclusions. Measures 2.5 m by 1 m. Fill of ditch [7609]

APPENDIX 3: Photographic Register

Digital Images

Frame	Description	From	Date
1-3	General shots of field B pre excavation	NW	11/08/14
4	Post excavation shot of trench 1	E	11/08/14
5	Post excavation shot of trench 2	S	11/08/14
6	Post excavation shot of trench 4	S	11/08/14
7	Post excavation shot of trench 6	N	11/08/14
8	Post excavation shot of trench 3	S	11/08/14
9	Post excavation shot of trench 5	S	11/08/14
10	Post excavation shot of trench 8	S	11/08/14
11	Post excavation shot of trench 10	S	11/08/14
12	Post excavation shot of trench 12	S	11/08/14
13	Post excavation shot of trench 11	NE	11/08/14
14	Post excavation shot of trench 9	S	11/08/14
15	Post excavation shot of trench 14	NW	12/08/14
16	Post excavation shot of trench 15	SE	12/08/14
17	SE facing section through pit [901]	SE	12/08/14
18	General shot of pit [901]	SE	12/08/14
19-21	Detailed views of [901]	SE	12/08/14
22	Rubble drain above pit [901]	W	12/08/14
23	Post excavation shot of trench 16	NW	12/08/14
24	Sounding through clay	SE	12/08/14
25	Post excavation shot of trench 23	SW	12/08/14
26	Post excavation shot of trench 21	SW	12/08/14

27	Post excavation shot of trench 19	S	12/08/14
28	Post excavation shot of trench 20	S	12/08/14
29	Post excavation shot of trench 22	S	12/08/14
30	Post excavation shot of trench 17	S	12/08/14
31	Post excavation shot of trench 18	SE	12/08/14
32	Post excavation shot of trench 24	E	13/08/14
33-35	Rubble drains in TR 27	W	13/08/14
36	Post excavation shot of trench 27	E	13/08/14
37	Post excavation shot of trench 29	W	13/08/14
38	Ditch [2901]	SE	13/08/14
39	Colluvium in TR 31	NW	13/08/14
40	Post excavation shot of trench 26	W	13/08/14
41	Post excavation shot of trench 28	W	13/08/14
42	Rubble in TR 33	W	13/08/14
43	Post excavation shot of trench 35	W	13/08/14
44	Post excavation shot of trench 37	E	13/08/14
45	Silted ceramic drain in T39	E	13/08/14
46	Bedrock seam In TR 39	N	13/08/14
47	Post excavation shot of trench 39	S	13/08/14
48	Post excavation shot of trench 41	SE	13/08/14
49	Post excavation shot of trench 43	NW	13/08/14
50	Post excavation shot of trench 34	N	13/08/14
51	Post excavation shot of trench 32	N	13/08/14
52	Post excavation shot of trench 47	W	14/08/14
53	Post excavation shot of trench 51	W	14/08/14
54	Post excavation shot of trench 50	W	14/08/14
55	Post excavation shot of trench 48	W	14/08/14
56	Post excavation shot of trench	-	14/08/14
57	Post excavation shot of trench 55	W	14/08/14
58	Post excavation shot of trench 46	S	14/08/14
59	Post excavation shot of trench 44	S	14/08/14
60	Shot of pit [4705]	SE	18/04/14
61	Shot of pit [4705]	NE	18/04/14
62	NE facing section of pit [4705]	NE	18/04/14
63	General shot of pits [4703] and [4705]	SE	18/04/14
64	NNW facing section of ditch [4701]	NNW	18/04/14
65	General shots of ditch [4701]	SSE	18/04/14
66	General shots of ditch [4701]	NE	18/04/14
67	General shots of ditch [4701]	SE	18/04/14
68	General shots of ditches [4901] and [4903]	NE	18/04/14
69	Possible continuation of ditch [4901]	SSE	18/04/14
70-71	Furrows in TR 51	S	18/04/14
72	TR 51 ditch [5101] and rubble drain	S	18/04/14
73	TR 51 ditch [5101] and rubble drain	W	18/04/14
74	TR 51 double ditched [5101] and [5103]	S	18/04/14
75	TR 51 double ditched [5101] and [5103]	ESE	18/04/14
76	TR 51 ditch [5103]	SSW	18/04/14
77	TR 51 furrow	S	18/04/14
78	TR 51 curvilinear ditch [5105]	SSE	18/04/14
79	TR 51 ditch [5107]	SSW	18/04/14

80-81	TR 51 ditches [5109] and [5111]	SSE	18/04/14
82	TR 51 ditches [5109] and [5111]	WNW	18/04/14
83-84	TR 51 ditch [5113]	SSW	18/04/14
85	TR 51 post excavation shot of slot through [5107]	SSW	18/04/14
86	TR 51 SSW facing section of slot through [5107]	SSW	18/04/14
87	TR 51 post excavation shot of [5103] NNE facing section	NNE	18/08/14
88	TR 51 post excavation slot through [5103]	NNE	18/08/14
89	Post excavation shot of trench 50	NW	18/08/14
90	Post excavation shot of trench 52	NW	18/08/14
91	Post excavation shot of trench 54	NW	18/08/14
92	Post excavation shot of trench 56	NW	18/08/14
93	Post excavation shot of trench 58	NW	18/08/14
94	Post excavation shot of trench 62	S	18/08/14
95	Post excavation shot of trench 64	S	18/08/14
96	Post excavation shot of trench 66	S	18/08/14
97	Post excavation shot of trench 68	SE	18/08/14
98	Post excavation shot of trench 70	S	18/08/14
99	Post excavation shot of trench 58	S	18/08/14
100	Post excavation shot of trench 59	S	18/08/14
101	Post excavation shot of trench 61	SE	18/08/14
102	Post excavation shot of trench 63	S	18/08/14
103	Post excavation shot of trench 65	S	18/08/14
104	Post excavation shot of trench 67	S	18/08/14
105	Post excavation shot of trench 69	SE	18/08/14
106	Post excavation shot of trench 71	W	18/08/14
107	Post excavation shot of trench 73	W	18/08/14
108	Post excavation shot of trench 75	W	18/08/14
109	Post excavation shot of trench 77	W	18/08/14
110	Post excavation shot of trench 79	W	18/08/14
112	Post excavation shot of trench 81	W	18/08/14
113-121	Post excavation shots of trenches	various	18/08/14
122	TR 53 cut feature [5305]	E	19/08/14
123	TR 53 Small ditch terminal [5311]	W	19/08/14
124	TR 53 Deposits [5307] and [5308]	E	19/08/14
125	TR 53 Deposits [5307] and [5308]	W	19/08/14
126	TR 53 double ditch [5301] and [5303]	SSW	20/08/14
127	TR 53 double ditch [5301] and [5303]	W	20/08/14
128	TR 53 small ditch terminal [5311]	W	20/08/14
129	TR 53 Cut feature [5305]	W	20/08/14
130-131	TR 53 double ditch [5301] and [5303]	SSE	20/08/14
132	TR 72 Terminal of a linear [7211]	NNE	20/08/14
133	TR 72 [7211] and possible small cut feature	ENE	20/08/14
134	TR 72 cut feature [7207]	E	20/08/14
135	TR 72 curvilinear ditch [7205]	NNE	20/08/14
136-138	TR 72 Enclosure around feature [7205]	ENE	20/08/14
139	TR 72 west part of the ditch circle [7205]	SSE	20/08/14
140	TR 72 small linear beside terminal [7203]	NNE	20/08/14
141-142	TR 72 ditch [7201]	SSW	20/08/14
143	TR 72 post excavation shot of NNE facing section of [7203]	ENE	20/08/14
144	TR 72 post excavation shot of slot through [7203]	ENE	20/08/14

145	TR 72 post excavation shot of ditch [7201] SSW facing section	SSW	20/08/14
146	TR 72 post excavation shot of ditch [7201] SSW facing section	SSW	20/08/14
147	TR 74 pre excavation shot of ditch [7401]	N	20/08/14
148	Post excavation shot of trench 104	N	20/08/14
149	Post excavation shot of trench 98	S	20/08/14
150	Post excavation shot of trench 96 – partially backfilled	N	20/08/14
151	Post excavation shot of trench 94	S	20/08/14
152	Post excavation shot of trench 100	S	20/08/14
153	Post excavation shot of trench 102	SE	20/08/14
154	Post excavation shot of trench 92	SE	20/08/14
155-156	Slot through ditch [7401]	SE	20/08/14
157-171	Post excavation shots of trenches 83 - 121	various	21/08/14
172	General shot of ditches [7603] and [7605]	W	22/08/14
173	General shot of ditches [7603] and [7605]	S	22/08/14
174	E-facing section of ditches [7603] and [7605]	W	22/08/14
175	General shot of ditches [7603] and [7605]	NE	22/08/14
176	Post excavation shot of trench 106	SE	22/08/14
177	Post excavation shot of trench 108	SE	22/08/14
178	Post excavation shot of trench 110	NE	22/08/14
179	Post excavation shot of trench 112	SW	22/08/14
180	Post excavation shot of trench 114	NE	22/08/14
181	Stone drain terminal in TR 116	NE	22/08/14
182	Post excavation shot of trench 116	SW	22/08/14
183	Post excavation shot of trench 118	NE	22/08/14
184	Post excavation shot of trench 123	N	22/08/14
185	Post excavation shot of trench 125	N	22/08/14
186	Post excavation shot of trench 127	NE	22/08/14
187	Post excavation shot of trench 129	NE	22/08/14
189	Post excavation shot of trench 131	SE	22/08/14
190	Post excavation shot of trench 133	SW	22/08/14
191	Post excavation shot of trench 135	SW	22/08/14
192	Post excavation shot of trench 137	NW	22/08/14
193	Post excavation shot of trench 139	NW	22/08/14
194	Post excavation shot of trench 141	NE	22/08/14
195	Post excavation shot of trench 143	NE	22/08/14
196	Post excavation shot of trench 147	NE	22/08/14
197	Post excavation shot of trench 149	NE	22/08/14
198	Post excavation shot of trench 151	NE	22/08/14
199	Post excavation shot of trench 153	S	22/08/14
200	Post excavation shot of trench 120	NE	22/08/14
201	Post excavation shot of trench 122	E	22/08/14
202	Post excavation shot of trench 155	W	22/08/14
203	Post excavation shot of trench 157	E	22/08/14
204	Post excavation shot of trench 159	SW	22/08/14
205	Post excavation shot of trench 124	E	22/08/14

APPENDIX 4: Drawing Register

Drawing No.	Area	Details	Scale
1	B	Plan of pit [901]	1:50
2	B	SE facing section of pit [901]	1:20
3	B	NNE facing section of ditch [4701]	1:10
4	B	NE facing section of pit [4703]	1:10
5	B	Plan of features in Trench 47	1:50
6	B	Plan of Trench 49	1:50
7	B	Trench 51 – SSW facing section through linear [5107]	1:10
8	B	Trench 51 – NNE facing section through linear [5103]	1:10
9	B	Trench 51 – Plan of features	1:50
10	B	Trench 53 – Plan of features	1:50
11	E	Trench 72 – Plan of features	1:50
12	E	Trench 72 – ENE facing section through ditch [7203]	1:10
13	E	Trench 72 – SSW facing section through ditch [7201]	1:10
14	E	Trench 74 – SSE facing section through ditch [7401]	1:10
15	E	Trench 74 – plan of feature	1:50
16	B	Plan of trench 76	1:50
17	B	E-facing section through ditches [7603] and [7605]	1:10

APPENDIX 5: Finds Register

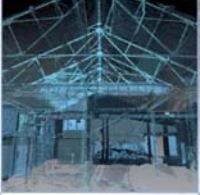
Finds No.	Trench	Context No.	Description
1	47	[4702]	Fragment of canal coal
2	94	U/S	Ceramic green glaze PMRW

APPENDIX 6: Samples Register

Context No.	Trench	Area	Quantity (litres)
4702	47	B	6L
4704	47	B	1L
4706	47	B	1L
5104	51	B	5L
5108	51	B	5L
5309	53	B	3L
7204	72	C	3L
7402	74	C	2L

APPENDIX 7: *Discovery and Excavation in Scotland* Report

LOCAL AUTHORITY:	City of Edinburgh
PROJECT TITLE/SITE NAME	Broomhills Road, Edinburgh
PROJECT CODE:	22560
PARISH:	Edinburgh
NAME OF CONTRIBUTOR:	Kevin Paton
NAME OF ORGANISATION:	AOC Archaeology Group
TYPE(S) OF PROJECT:	Archaeological Evaluation
NMRS NO(S)	None
SITE/MONUMENT TYPE(S):	None
SIGNIFICANT FINDS:	None
NGR (2 letters, 6 figures)	NT 27198 67690
START DATE (this season)	11 th August 2014
END DATE (this season)	29 th August 2014
PREVIOUS WORK (incl. DES ref.)	N/A
MAIN (NARRATIVE) DESCRIPTION: (May include information from other fields)	<p>An archaeological evaluation was undertaken on the site of a proposed future development to the east of Broomhills Road, Edinburgh. A 10% evaluation was required of the c. 27 ha site with a total of 12,195 m of trenching excavated across the development area.</p> <p>Despite the high level of plough scarring across the site, a cluster of shallow features was revealed at the W edge of site behind the cottages on Broomhills Road. The features were mainly curvilinear ditches set on various alignments all to the immediate west of a large natural hollow. At least two ring ditches were revealed, and two of the trenches revealed intercutting features, suggesting various phases of use. Excavation of a percentage of the features did not reveal anything in terms of artefactual evidence but charcoal was found within each feature providing possibilities for use in carbon dating.</p> <p>Further north in an isolated position a large pit feature was also found, filled with deposits of heat affected soils. Again no artefacts were found but charcoal was evident within the pit deposits.</p>
PROPOSED FUTURE WORK:	None
CAPTION(S) FOR ILLUSTRS:	None
SPONSOR OR FUNDING BODY:	BDW Trading Ltd.
ADDRESS OF MAIN CONTRIBUTOR:	Edgefield Road Industrial Estate, Loanhead, Midlothian, EH20 9SY
EMAIL ADDRESS:	admin@aocarchaeology.com
ARCHIVE LOCATION (intended/deposited)	Archive to be deposited in NMRS



AOC Archaeology Group, Edgefield Industrial Estate, Edgefield Road, Loanhead EH20 9SY
tel: 0131 440 3593 | fax: 0131 440 3422 | e-mail: admin@aocarchaeology.com

www.aocarchaeology.com