

The Glebe, Ratho, Edinburgh: Archaeological Evaluation Data Structure Report

AOCarcha1-189459
AOC Project 22884
5th September 2014



The Glebe, Ratho, Edinburgh Archaeological Evaluation Data Structure Report

On Behalf of: CALA Homes,
Callender House
Callender Business Park,
Callender Road,
Falkirk,
FK1 1XE

National Grid Reference (NGR): centred on NT 1407 7099

AOC Project No: 22884

Prepared by: Rob Engl

Illustration by: Jamie Humble

Date of Fieldwork: 2nd September – 4th September 2014

Date of Report: 5th September 2014

This document has been prepared in accordance with AOC standard operating procedures.

Author: Rob Engl **Date:** 5th September 2014

Approved by: Martin Cook **Date:** 5th September 2014

Draft/Final Report Stage: **Date:** 5th September 2014

Enquiries to: AOC Archaeology Group
Edgefield Industrial Estate
Edgefield Road
Loanhead
EH20 9SY

Tel. 0131 440 3593
Fax. 0131 440 3422
e-mail. admin@aocarchaeology.com



Contents

	Page
List of illustrations	3
List of plates	3
List of appendices	3
Abstract.....	4
1 INTRODUCTION	5
1.1 Background	5
1.2 Location.....	5
1.3 Archaeological background	5
2 OBJECTIVES	5
3 METHODOLOGY	6
4 RESULTS	6
5 CONCLUSION AND RECOMMENDATIONS.....	7
6 BIBLIOGRAPHY	7
APPENDIX 1: Trench Descriptions	9
APPENDIX 2: Photographic Record	13
APPENDIX 3: ‘Discovery and Excavation in Scotland’ Report.....	14

List of illustrations

- Figure 1 Site Location
Figure 2 Trench Location Plan

List of plates

- Plate 1 Trench 2 post-excavation from east
Plate 2 Trench 5 west facing section showing made ground

List of appendices

- Appendix 1 Trench Descriptions
Appendix 2 Photographic Record
Appendix 3 '*Discovery and Excavation in Scotland*' Report

Abstract

This report presents the results of an archaeological evaluation undertaken in respect to a proposed development at The Glebe, Ratho, Edinburgh (centred on NGR: NT 1407 7099).

The development area measures approximately 1.9 ha in total. A 10% (1,950 linear metres) sample of the available area was investigated by the evaluation.

No significant archaeological remains were recorded within the development area and no further works are considered necessary.

1 INTRODUCTION

1.1 Background

- 1.1.1 A programme of archaeological works was undertaken by AOC Archaeology at 'The Glebe', Freelands Road, Ratho, Edinburgh. The works were required by CALA Homes (East) prior to the construction of a residential development. The site lies within the administrative area of the City of Edinburgh Council, which is advised on archaeological matters by CECAS. The archaeological works were conducted in accordance with the principles as set out in *Scottish Planning Policy* (2014) and *Planning and Archaeology 2/2011* (2011) and consisted of an archaeological evaluation by trial trenching.
- 1.1.2 The development area (centred on NGR: NT 1407 7099; Figure 1) measures approximately 1.9 ha in total. The entire area is comprised of arable land and is presently under crop.
- 1.1.3 No significant archaeological features or finds were revealed during the evaluation.

1.2 Location

- 1.2.1 The proposed development lies on the western edge of Edinburgh, on the outskirts of the village of Ratho (Figure 1, centred on NT 1407 7099). Presently it is in use as greenfield agricultural land and is currently under crop. The site is bounded by Freelands Road to the north and Freelands Way to the south. The western site boundary is formed by the Manse and the eastern by recent residential development.

1.3 Archaeological background

- 1.3.1 The Royal Commission on Ancient and Historical Monuments of Scotland show that there are no known archaeological sites lying within the development area however there are a few Listed buildings lying close to the development area. The site lies within the village of Ratho to the west of the Manse (NMRS No. NT17SW 129). The Manse is a B-Listed, (Ref No. 27729) 2-storey building over a raised basement which was built in 1803 replacing an earlier manse building demolished in the early 19th century.
- 1.3.2 A little to the west of the Manse, on the west side of Baird Road lies, Ratho Kirk (NMRS No. NT17SW 14) is noted by the RCAHMS as dating from the 12th century to 13th century and described as oblong in plan 76' by 20'2" internally, but it was considerably altered and added to in the 17th century and later. A further programme of renovation and restoration was undertaken in 1932. Historic Scotland record the church as, '12th century Romanesque church with substantial additions late 17th century, circa 1830 and earlier 20th century' and it is A-Listed, (Ref No. 27685). Included within the A-Listing is the graveyard, which is included within the RCAHMS database as site NT17SW 14.1.

2 OBJECTIVES

- 2.1 The objectives of the archaeological evaluation were:
- i) to determine and assess the character, extent, condition, quality, date and significance of any buried archaeological remains within the proposed development area through evaluation trenching;
 - ii) to advise and implement an appropriate form of mitigation strategy compliant with Scottish Planning Policy (2014) and Planning and Archaeology 2/2011 (2011), such as

excavation, post-excavation analyses and publication, given the infeasibility of preserving the archaeological material *in situ*, should significant archaeological remains be encountered.

3 METHODOLOGY

- 3.1 The details of the archaeological evaluation, laid out below, were designed to meet the requirements of City of Edinburgh Council as advised by CECAS.
- 3.2 The evaluation was based on the trenching of a 10% sample of the 1.9 ha development area, for a total basal trench area of c.1,950 m². This amounts to a linear meterage of 975 m.
- 3.3 The evaluation was undertaken by a single tracked excavator equipped with 2.0 m wide bladed and ditching bucket. Excavation was undertaken in units/spits until the first significant archaeological horizon or natural subsoil was reached. All machine excavation was supervised by an experienced field archaeologist and undertaken according to AOC Archaeology Group's standard operating procedures, and the methodology within the *Written Scheme of Investigation* (AOC 2014). The trenches were immediately backfilled upon completion.

4 RESULTS

- 4.1 The archaeological evaluation was undertaken during the 2nd September – 4th September 2014. Overall weather conditions were dry and archaeological visibility was good.
- 4.2 The proposed development area consisted of a single large arable field with a pronounced slope to the south. The field ranges from 55m to 65m OD in height. The field was covered by a relatively shallow deposit of active sandy loam plough-soil ranging from 0.30 m to 0.60 m in depth. The top-soil had been frequently improved and numerous sherds of modern ceramics and glass were observed. The top-soil directly overlay a sub-soil of orange sands and gravels and sandy clay with numerous boulders. The sub-soil was heavily scarred by ploughing and stone holes and revealed little interface with the top-soil.
- 4.3 The south-eastern corner of the site area had undergone significant alteration with up to 0.40 m of made ground being introduced probably in order to raise the existing ground level.



Plate 1: Trench 2 Post-excavation from east



Plate 2: Trench 5 West facing section showing made ground

5 CONCLUSION AND RECOMMENDATIONS

- 5.1 The proposed development site was subject to a full and comprehensive archaeological evaluation. Neither significant archaeological features nor artefacts pre-dating the late 19th/ early 20th century were identified.
- 5.2 No further archaeological works are considered necessary. This recommendation will require confirmation by Mr John Lawson Archaeological Officer for the City of Edinburgh Archaeology Service (CECAS) on behalf of City of Edinburgh Council.

6 BIBLIOGRAPHY

AOC 2014 *The Glebe, Ratho, Edinburgh: Written Scheme of Investigation*' Unpublished client report

Scottish Planning Policy SPP23. Archaeology and Planning. Scottish Government April 2014.

Scottish Government 2011 *Planning and Archaeology 2/2011*

The Glebe, Ratho, Edinburgh: Archaeological Evaluation Data Structure Report

Section 2: Appendices

APPENDIX 1: Trench Descriptions

Trench 1

<i>Dimensions</i>	50 m by 2.0 m
<i>Orientation</i>	W-E
<i>Top-soil</i>	0.50 m – 0.60 m
<i>Depth of Excavation</i>	0.60 m
<i>Significant Features</i>	None
<i>Other Features</i>	None
<i>Subsoil</i>	Orange sands and gravels with plough scars and stone holes
<i>Finds</i>	Numerous white ceramics and glass within top-soil

Trench 2

<i>Dimensions</i>	50 m by 2.0 m
<i>Orientation</i>	NW-SE
<i>Top-soil</i>	0.30 m – 0.40 m
<i>Depth of Excavation</i>	0.40 m
<i>Significant Features</i>	None
<i>Other Features</i>	None
<i>Subsoil</i>	Orange sands and gravels with plough scars and stone holes
<i>Finds</i>	Numerous white ceramics and glass within top-soil

Trench 3

<i>Dimensions</i>	50 m by 2.0 m
<i>Orientation</i>	NW-SE
<i>Top-soil</i>	0.30 m – 0.40 m
<i>Depth of Excavation</i>	0.40 m
<i>Significant Features</i>	None
<i>Other Features</i>	None
<i>Subsoil</i>	Orange sands and gravels with plough scars and stone holes
<i>Finds</i>	Numerous white ceramics and glass within top-soil

Trench 4

<i>Dimensions</i>	50 m by 2.0 m
<i>Orientation</i>	NW-SE
<i>Top-soil</i>	0.30 m
<i>Depth of Excavation</i>	0.40 m
<i>Significant Features</i>	None
<i>Other Features</i>	None
<i>Subsoil</i>	Orange sands and gravels with plough scars and stone holes
<i>Finds</i>	Numerous white ceramics and glass within top-soil

Trench 5

<i>Dimensions</i>	50 m by 2.0 m
<i>Orientation</i>	NW-SE
<i>Top-soil</i>	0.30 m – 0.40 m
<i>Depth of Excavation</i>	0.40 m – 0.70 m
<i>Significant Features</i>	None
<i>Other Features</i>	Made ground at 8.0 m from NW to end of trench
<i>Subsoil</i>	Orange sands and gravels with plough scars and stone holes
<i>Finds</i>	Numerous white ceramics and glass within top-soil

Trench 6

<i>Dimensions</i>	50 m by 2.0 m
<i>Orientation</i>	NW-SE
<i>Top-soil</i>	0.40 m
<i>Depth of Excavation</i>	0.80 m
<i>Significant Features</i>	None
<i>Other Features</i>	Made ground 0 m to 50.0 m
<i>Subsoil</i>	Orange brown sandy clay
<i>Finds</i>	Numerous white ceramics and glass within top-soil

Trench 7

<i>Dimensions</i>	50 m by 2.0 m
<i>Orientation</i>	NNW-SSE
<i>Top-soil</i>	0.40 m
<i>Depth of Excavation</i>	0.60 m
<i>Significant Features</i>	None
<i>Other Features</i>	None
<i>Subsoil</i>	Orange brown sandy clay
<i>Finds</i>	Numerous white ceramics and glass within top-soil

Trench 8

<i>Dimensions</i>	50 m by 2.0 m
<i>Orientation</i>	NNW-SSE
<i>Top-soil</i>	0.60 m
<i>Depth of Excavation</i>	0.70 m
<i>Significant Features</i>	None
<i>Other Features</i>	None
<i>Subsoil</i>	Orange brown sandy clay
<i>Finds</i>	Numerous white ceramics and glass within top-soil

Trench 9

<i>Dimensions</i>	100 m by 2.0 m
<i>Orientation</i>	N-S
<i>Top-soil</i>	0.40 m
<i>Depth of Excavation</i>	0.50 m – 0.70 m
<i>Significant Features</i>	None
<i>Other Features</i>	Made-ground from 80.0 m to 100.0 m
<i>Subsoil</i>	Orange brown sandy clay
<i>Finds</i>	Numerous white ceramics and glass within top-soil

Trench 10

<i>Dimensions</i>	50 m by 2.0 m
<i>Orientation</i>	E-W
<i>Top-soil</i>	0.30 m
<i>Depth of Excavation</i>	0.40 m
<i>Significant Features</i>	None
<i>Other Features</i>	None
<i>Subsoil</i>	Orange sands and gravels with plough scars and stone holes
<i>Finds</i>	Numerous white ceramics and glass within top-soil

Trench 11

<i>Dimensions</i>	50 m by 2.0 m
<i>Orientation</i>	NE-SW
<i>Top-soil</i>	0.35 m
<i>Depth of Excavation</i>	0.40 m
<i>Significant Features</i>	None
<i>Other Features</i>	None
<i>Subsoil</i>	Orange sands and gravels with plough scars and stone holes
<i>Finds</i>	Numerous white ceramics and glass within top-soil

Trench 12

<i>Dimensions</i>	50 m by 2.0 m
<i>Orientation</i>	NW-SE
<i>Top-soil</i>	0.40 m
<i>Depth of Excavation</i>	0.40 m
<i>Significant Features</i>	None
<i>Other Features</i>	None
<i>Subsoil</i>	Orange sandy clay with plough scars and stone holes
<i>Finds</i>	Numerous white ceramics and glass within top-soil

Trench 13

<i>Dimensions</i>	50 m by 2.0 m
<i>Orientation</i>	NW-SE
<i>Top-soil</i>	0.40 m
<i>Depth of Excavation</i>	0.50 m
<i>Significant Features</i>	None
<i>Other Features</i>	None
<i>Subsoil</i>	Orange sandy clay with plough scars and stone holes
<i>Finds</i>	Numerous white ceramics and glass within top-soil

Trench 14

<i>Dimensions</i>	50 m by 2.0 m
<i>Orientation</i>	NW-SE
<i>Top-soil</i>	0.40 m
<i>Depth of Excavation</i>	0.50 m
<i>Significant Features</i>	None
<i>Other Features</i>	None
<i>Subsoil</i>	Orange sandy clay with plough scars and stone holes
<i>Finds</i>	Numerous white ceramics and glass within top-soil

Trench 15

<i>Dimensions</i>	50 m by 2.0 m
<i>Orientation</i>	NW-SE
<i>Top-soil</i>	0.30 m - 0.40 m
<i>Depth of Excavation</i>	0.40 m
<i>Significant Features</i>	None
<i>Other Features</i>	None
<i>Subsoil</i>	Orange sandy clay with plough scars and stone holes
<i>Finds</i>	Numerous white ceramics and glass within top-soil

Trench 16

<i>Dimensions</i>	30 m by 2.0 m
<i>Orientation</i>	E-W
<i>Top-soil</i>	0.30 m – 0.35 m
<i>Depth of Excavation</i>	0.40 m
<i>Significant Features</i>	None
<i>Other Features</i>	None
<i>Subsoil</i>	Orange sandy clay with plough scars and stone holes
<i>Finds</i>	Numerous white ceramics and glass within top-soil

Trench 17

<i>Dimensions</i>	50 m by 2.0 m
<i>Orientation</i>	NW-SE
<i>Top-soil</i>	0.30 m - 0.40 m
<i>Depth of Excavation</i>	0.40 m
<i>Significant Features</i>	None
<i>Other Features</i>	None
<i>Subsoil</i>	Orange sandy clay with plough scars and stone holes
<i>Finds</i>	Numerous white ceramics and glass within top-soil

Trench 18

<i>Dimensions</i>	50 m by 2.0 m
<i>Orientation</i>	W-E
<i>Top-soil</i>	0.40 m
<i>Depth of Excavation</i>	0.50 m
<i>Significant Features</i>	None
<i>Other Features</i>	Made ground 15.0 m to 50.0 m
<i>Subsoil</i>	Orange sandy clay with plough scars and stone holes
<i>Finds</i>	Numerous white ceramics and glass within top-soil

Trench 19

<i>Dimensions</i>	50 m by 2.0 m
<i>Orientation</i>	SSE-NNW
<i>Top-soil</i>	0.30 m - 0.40 m
<i>Depth of Excavation</i>	0.40 m
<i>Significant Features</i>	None
<i>Other Features</i>	Made ground 0.0 m to 25.0 m
<i>Subsoil</i>	Orange sandy clay with plough scars and stone holes
<i>Finds</i>	Numerous white ceramics and glass within top-soil

Trench 20

<i>Dimensions</i>	35 m by 2.0 m
<i>Orientation</i>	SS-NW
<i>Top-soil</i>	0.30 m - 0.40 m
<i>Depth of Excavation</i>	0.40 m
<i>Significant Features</i>	None
<i>Other Features</i>	None
<i>Subsoil</i>	Orange sandy clay with plough scars and stone holes
<i>Finds</i>	Numerous white ceramics and glass within top-soil

Trench 21

<i>Dimensions</i>	25 m by 2.0 m
<i>Orientation</i>	NE-SW
<i>Top-soil</i>	0.30 m – 0.35 m
<i>Depth of Excavation</i>	0.40 m
<i>Significant Features</i>	None
<i>Other Features</i>	None
<i>Subsoil</i>	Orange sandy clay with plough scars and stone holes
<i>Finds</i>	Numerous white ceramics and glass within top-soil

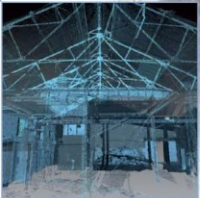
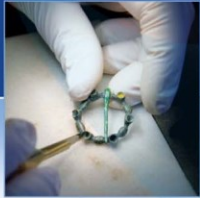
APPENDIX 2: Photographic Record

Digital Photographs

Frame	Description	From
1	Registration	-
2-5	Pre-excavation shots of site	NW
6	Trench 1 post-excavation	E
7	Trench 2 post-excavation	SE
8	Trench 3 post-excavation	SE
9	Trench 4 post-excavation	SE
10	Trench 5 post-excavation	SE
11	South facing section showing made ground Trench 5	S
12	Trench 6 post-excavation	SE
13	Trench 7 post-excavation	SSE
14	Trench 8 post-excavation	SSE
15	Trench 9 post-excavation	S
16	Trench 10 post-excavation	W
17	Trench 11 post-excavation	SW
18	Trench 12 post-excavation	NW
19	Trench 13 post-excavation	SE
17	Trench 14 post-excavation	SE
18	Trench 15 post-excavation	NE
19	Trench 16 post-excavation	SE
20	Trench 17 post-excavation	E
21	Trench 18 post-excavation	E
22	Trench 19 post-excavation	NW
23	Trench 20 post-excavation	NW
24	Trench 21 post-excavation	SW

APPENDIX 3: 'Discovery and Excavation in Scotland' Report

LOCAL AUTHORITY:	City of Edinburgh Council
PROJECT TITLE/SITE NAME	The Glebe, Ratho, Edinburgh
PROJECT CODE:	AOC 22884
PARISH:	Ratho
NAME OF CONTRIBUTOR:	Rob Engl
NAME OF ORGANISATION:	AOC Archaeology Group
TYPE(S) OF PROJECT:	Archaeological Evaluation
NMRS NO(S)	None
SITE/MONUMENT TYPE(S):	None
SIGNIFICANT FINDS:	None
NGR (2 letters, 6 figures)	NT 1407 7099
START DATE (this season)	2 nd September 2014
END DATE (this season)	4 th September 2014
PREVIOUS WORK (incl. DES ref.)	None
MAIN (NARRATIVE) DESCRIPTION: (May include information from other fields)	<p>This report presents the results of an archaeological evaluation undertaken in respect to a proposed development at The Glebe, Ratho, Edinburgh (centred on NGR: NT 1407 7099).</p> <p>The development area measures approximately 1.9 ha in total. A 10% (1,950 linear metres) sample of the available area was investigated by the evaluation.</p> <p>No significant archaeological remains were recorded within the development area and no further works are considered necessary.</p>
PROPOSED FUTURE WORK:	None
CAPTION(S) FOR ILLUSTRS:	---
SPONSOR OR FUNDING BODY:	Cala Homes
ADDRESS OF MAIN CONTRIBUTOR:	Edgefield Road Industrial Estate, Loanhead, Midlothian, EH20 9SY
EMAIL ADDRESS:	Rob.Engl@aocarchaeology.com
ARCHIVE LOCATION (intended/deposited)	Archive to be deposited in NMRS



AOC Archaeology Group, Edgefield Industrial Estate, Edgefield Road, Loanhead EH20 9SY
tel: 0131 440 3593 | fax: 0131 440 3422 | e-mail: admin@aocarchaeology.com

www.aocarchaeology.com