

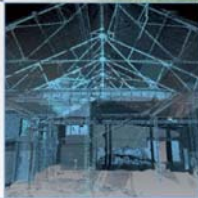
Newbigging Quarry, Newbigging: Archaeological Works (2014)

Data Structure Report

AOC 1911

OASIS No. aocarcha1-191397

30th September 2014



ARCHAEOLOGY

HERITAGE

CONSERVATION

Newbigging Quarry, Newbigging: Archaeological Works (2014)

Data Structure Report

On Behalf of: Tarmac Ltd
Technical Services
PO Box 8723
Bellshill
ML4 3 WF

National Grid Reference (NGR): NT 0283 4505

AOC Project No: AOC 1911

Prepared by: Kevin Paton

Illustration by: Kevin Paton

Date of Fieldwork: 1st September to 16th September 2014

Date of Report: 30th September 2014

This document has been prepared in accordance with AOC standard operating procedures.

Author: Kevin Paton

Date: 30th September 2014

Approved by: Martin Cook

Date: 10th October 2014

Draft/Final Report Stage: Draft

Date: 10th October 2014

Enquiries to: AOC Archaeology Group
Edgefield Industrial Estate
Edgefield Road
Loanhead
EH20 9SY

Tel. 0131 440 3593
Fax. 0131 440 3422
e-mail. edinburgh@aocarchaeology.com

Contents

	Page
List of illustrations	2
List of Plates	2
List of Appendices	2
Abstract	3
1 INTRODUCTION	4
1.1 Development Background	4
1.2 Site Location.....	4
1.3 Archaeological Background	4
2 OBJECTIVES	5
3 METHODOLOGY	5
4 RESULTS	5
4.1 Introduction.....	5
4.2 The linear features.....	5
4.3 The pit grouping and isolated pits.....	6
5 DISCUSSION	7
6 CONCLUSIONS AND RECOMMENDATIONS	7
7 REFERENCES	7
Appendix 1: Context Descriptions	25
Appendix 2: Photographic Register	27
Appendix 3: Drawing Register	30
Appendix 4: Finds Register	31
Appendix 5: Bulk Sample Register	31
Appendix 6: <i>Discovery and Excavation in Scotland</i> Entry	33

List of illustrations

- Figure 1: Site location Plan
- Figure 2: Location of features compared with previous excavations
- Figure 3: Plan of cursus monument ditches
- Figure 4: Sections of cursus monument ditches and pit [010]
- Figure 5: Plan of pit grouping
- Figure 6: Sections of features in pit grouping and isolated pits [001] and [024]

List of Plates

- Plate 1: View of ditch [006] showing modern cut
- Plate 2: E-facing section of pit [010] adjacent to ditch [006]
- Plate 3: View of ephemeral NE ends of ditches [027] and [029]
- Plate 4: Ditches [027] and [029] continuing under limits of excavation
- Plate 5: General post-ex view of cursus ditches from SW
- Plate 6: Post ex view of ditch [031]
- Plate 7: General mid-ex view of pit grouping
- Plate 8: Post ex view of pit grouping
- Plate 9: Section through pits [034] and [018]
- Plate 10: Mid-ex view of pit [016]
- Plate 11: Pre-ex view of pit [024]
- Plate 12: N-facing section of pit [001]

List of Appendices

- Appendix 1: Context Descriptions
- Appendix 2: Photographic Register
- Appendix 3: Drawing register
- Appendix 4: Finds Register
- Appendix 5: Bulk Sample Register
- Appendix 6: *Discovery and Excavation in Scotland* Report

Abstract

This report presents the results of a monitored topsoil strip conducted as part of the ongoing programme of archaeological works related to the extension to Newbigging Quarry, South Lanarkshire. These works recorded a number of archaeological features including the western extension of the Neolithic cursus monument revealed during the 2009 and 2012 excavations.

Furthermore, two isolated pits and a pit grouping that may continue further west was also recorded. These proved to be broadly similar in nature to the archaeological features recorded by excavations in 2007, 2009 and 2012 prior to previous extensions of the quarry. The excavation also produced a small assemblage of prehistoric ceramics.

A post-excavation analyses and associated publication phase of works will be required.

1 INTRODUCTION

1.1 Development Background

1.1.1 AOC Archaeology Group was commissioned by Tarmac Ltd to undertake a programme of archaeological works running concurrently with a programme of quarry extension at Newbigging Quarry, Carnwath, South Lanarkshire. The works were undertaken in order to satisfy the requirements of the local planning authority, South Lanarkshire Council, who are advised on archaeological matters by the West of Scotland Archaeology Service (WoSAS). The archaeological works were conducted according to the terms of a *Written Scheme of Investigation* (2012) approved on behalf of South Lanarkshire Council by WoSAS and in accordance with the principles set out in *Scottish Planning Policy* (Scottish Government 2014) and *Planning and Archaeology 2/2011* (Scottish Government 2011).

1.2 Site Location

1.2.1 The proposed quarry extension (centred NGR: NT 0283 4505) is located approximately 200 m to the north-east of Newbigging Mill, near Carnwath, South Lanarkshire (Figure 1). The site is to the immediate north of South Medwin river and is surrounded by arable and pastoral fields.

1.3 Archaeological Background

1.3.1 Thirteen sites of archaeological interest were known within the immediate area of the development. There were no known sites prior to the 2007-2009 findings located within the actual development area. The area to the north of the proposed quarry extension contains the site of a henge at Whitewellbrae Wood, a Scheduled Ancient Monument (NMRS No. NT04NW9; SAM Index No. 3369). Just to the north of the henge site several artefacts have been found, at Weston Camps. These artefacts include a stone pounder, an arrowhead and chert cores, flakes and blades (NMRS No's. NT04NW12, NT04NW38, NT04NW41) To the east of the site a ring ditch has been identified by aerial reconnaissance (NMRS NT04NW62).

1.3.2 To the west of the quarry extension is the location of a standing stone which stood *in situ* until the early 20th Century (NMRS No. NT04NW8). The find-spot of a silver chain may also be associated with the stone, although it may have been given an erroneous provenance. There is potential for further archaeological and cultural heritage sites, which may date back to the Neolithic with evidence at Weston Farm and Ogscastle for human occupation.

1.3.3 The site of a cist directly to the east of the quarry extension was discovered in 1977 – rescue excavation revealed the burial of an adult female and possibly an infant (NMRS No. NT04NW32). Artefacts found in the cist included several beakers, the first to be found associated with cists in the South Medwin Valley (Welfare, 1977).

1.3.4 There are also two mills in the immediate area, Newbigging (NMRS No. NT04SW35) and Walston. To the south lies Ogscastle, a residential building which lies on the site of a tower dating back to 1662. The site of the tower was excavated in 1968 by the owner of the site.

1.3.5 Archaeological investigations associated with the programme of earlier quarry extensions, undertaken at Newbigging Quarry (Cook et al 2012), identified sporadic activity between the Mesolithic and Early Historic period. These included pit groupings, a cist burial, a cursus

monument and a beaker burial. A substantial artefact assemblage was recovered including Later Neolithic and Bronze Age lithics and ceramics.

2 OBJECTIVES

2.1 The objectives of the archaeological works were:

- i. the identification, excavation, soil sampling and recording of all significant archaeological features within the quarry expansion;
- ii. the retrieval of a representative artefact assemblage;
- iii. upon conclusion of the excavation, the preparation and undertaking of a post-excavation and publication programme;
- iv. the post-excavation analysis of recovered material and publication of results of the excavation to bring the findings into the public and academic domain.

3 METHODOLOGY

3.1 A controlled topsoil strip was undertaken across the entire quarry extension, monitored by an archaeologist. Reduction to natural subsoil or the first significant archaeological horizon was carried out using a 360⁰ mechanical excavator equipped with a toothless bucket. All features were subject to 100% excavation and recording. Standard bulk samples, routine soil chemistry sampling and specialist sampling was undertaken as per normal AOC Archaeology procedure.

4 RESULTS

4.1 Introduction

4.1.1 The archaeological works were undertaken between the 18th October and 9th October 2012. The excavations were conducted in predominantly fine weather conditions allowing for good archaeological visibility. The various data gathered is presented as a series of appendices,

- i) Appendix 1 contains the context register;
- ii) Appendix 2 contains the photographic register;
- iii) Appendix 3 contains the drawing register;
- iv) Appendix 4 contains the finds register;
- v) Appendix 5 contains the bulk samples register;
- vi) Appendix 6 reproduces the '*Discovery and Excavation in Scotland*' entry

4.1.2 The topsoil-stripping covered a rectangular area of approximately 12,800 m². The findings broadly mirrored those of the previous excavations, revealing an apparent continuation of the probable Neolithic cursus monument and another isolated pit grouping.

4.2 The linear features

- 4.2.1 At the NW end of the stripped area several linear ditches were revealed that may tie in to the linear features found in 2012. No immediate relationship with the 2012 ditches was apparent as the first 15 m of the stripped area was sterile of archaeology. However, the remainder of the area contained six ditches, the first of which [006] was aligned E-W with the other five ditches [025], [027], [029], [031] and [036] running parallel and adjacent to each other, aligned NE-SW before curving W out of the stripped area (Figures 3&4).
- 4.2.2 Ditch [006] measured 8.73 m long by 0.7 m by 0.13 m and was truncated by a modern service trench (Plate 1). The alignment of this ditch corresponds to the alignment of the three parallel ditches found in 2012. To the immediate S of the ditch a small circular pit [010] measuring 0.88 m by 0.42 m by 0.19 m (Plate 2). No artefacts were found within the ditch or pit but charcoal was present within both fills providing possible dating evidence.
- 4.2.3 Further S of ditch [006], two very ephemeral linear cuts [029] and [027] aligned NE-SW were revealed that became more substantial to the SW (Plate 3). These features had clearly been heavily truncated by ploughing to the NE and would potentially have continued further NE in their original state. The ditches were immediately adjacent to each other with ditch [029] cutting the fill of ditch [027] at some points. Ditch [029] measured 21.6 m by 0.58 m by 0.32 m and ditch [027] measured 18.66 m by 0.42 m by 0.36 m, with both seen to continue out with the stripped area (Plate 4).
- 4.2.4 The other three ditches revealed in this area [025], [036] and [031] were parallel to [027] and [029] but all started and terminated within the stripped area (Plate 5). Ditch [025] also cut the fill of ditch [027] along its SE edge and measured 11.18 m by 0.38 m by 0.15 m. The fill of this ditch was in turn truncated on its SE edge by ditch [036] which was the shortest of the linears measuring 4.16 m by 0.34 m by 0.09 m. Approximately 0.5 m SE of this cluster of intercutting ditches another ditch [031] was revealed, also running parallel to the cluster and therefore related to it. It measured 5.76 m by 0.56 m by 0.18 m (Plate 6).

4.3 The pit grouping and isolated pits

- 4.3.1 Approximately 30 m SE of the cursus ditches was a grouping of four sub-circular pits [018], [020], [022] and [034] ranging in size from 0.65 m to 1 m in diameter and up to 0.28 m deep (Plates 7-9); Figures 5&6). One other pit [016] at the NW edge of the grouping was sub-rectangular or oblong in shape and was more ephemeral than the others (Plate 10). All of the pits contained prehistoric pottery and worked flint, with some containing abundant charcoal deposits. Pit [018] also contained some burnt nutshells within a lens of charcoal rich soil. The grouping covered an area 8 m (NW-SE) by 5 m (NE-SW) and may continue out with the stripped area to the SW.
- 4.3.2 Further SE of the grouping (approximately 25 m) was another isolated pit [024] (Figures 2&6). It was similar to the sub-rectangular pit [016], measuring 0.9 m by 0.55 m by 0.12 m (Plate 11). It also contained prehistoric pottery shards and some charcoal flecks. The final isolated pit [001] was at the SE end of the stripped area (Figures 2&6) and contained an abundance of medium angular stones that showed signs of being affected by heat (Plate 12). No artefacts were found within this final pit but it is most likely contemporary with the other prehistoric features found within the quarry.

5 DISCUSSION

- 5.1 The 2014 archaeological works have both confirmed and complimented the results of the earlier phases of work. The excavations have unearthed further evidence of highly significant archaeological remains, both in terms of their form and their juxtaposition with previously known archaeological sites, notably Whitewellbrae Wood Henge. The fieldwork data, artefactual material and soil samples will supplement the data set retrieved from the 2007, 2009 and 2012 excavations.
- 5.2 The excavation illustrated the continuity of the archaeological activity recorded by the 2007, 2009 and 2012 excavations. The fragmentary Neolithic cursus monument recognised in 2009 and 2012 (Cook *et al* forthcoming) continued within the current land take. The full excavation of the cursus revealed a partially segmented monument with parallels throughout Scotland.
- 5.3 Artefactually, the site was relatively poor in comparison to previous seasons. However, prehistoric ceramic was recovered from all of the pits within the pit grouping as well as some worked flint tools. An initial assessment of the ceramic and flint provides an approximate Neolithic date for the features.

6 CONCLUSIONS AND RECOMMENDATIONS

- 6.4 This report is both preliminary and provisional, with many issues raised by the excavation data still to be addressed. A post-excavation research design will be prepared for approval by WoSAS who advise South Lanarkshire Council on archaeological matters. This will describe all necessary and appropriate assessment processes and consequent post-excavation analyses together with publication proposals for the final report of this and the 2012 phases of work. This report will integrate the stratigraphic, contextual and descriptive data from the excavation with specialist post-excavation analyses covering dating, palaeoenvironmental and artefact issues, culminating in an article fit for academic publication.

7 REFERENCES

Hunter Blair, A 2007 *Newbigging Quarry: Evaluation: Data Structure Report*. Unpubl AOC Archaeology Archive Report.

Hunter Blair, A 2008 *Newbigging Quarry: Excavation: Data Structure Report*. Unpubl AOC Archaeology Archive Report.

Cook, M., Engl, R., Hunter Blair, A. & MacSween, A. forthcoming *Prehistoric Settlement and Occupation at Newbigging Quarry*

Scottish Government 2014 *Scottish Planning Policy*

Scottish Government 2011 *PAN 2/2011: Planning and Archaeology*

Welfare, H (1976-7) 'A beaker cist at Newbiggingmill quarry, Lanarkshire' *Proc Soc Antiq Scot*, 108: 73-79.



Plate 1 - View of ditch [006] showing modern cut



Plate 2 - E-facing section of pit [010] adjacent to ditch [006]



Plate 3 - View of ephemeral NE ends of ditches [027] and [029]



Plate 4 - Ditches [027] and [029] continuing under limits of excavation



Plate 5 - General post-ex view of cursus ditches from SW



Plate 6 - Post ex view of ditch [031]



Plate 7 - General mid-ex view of pit grouping

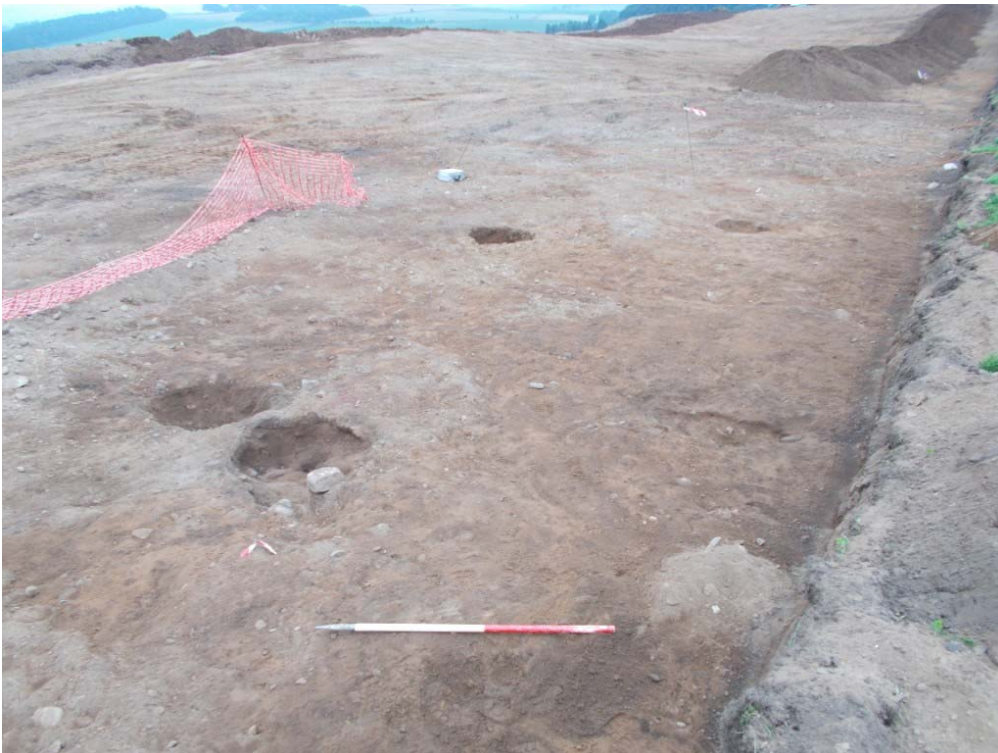


Plate 8 - Post ex view of pit grouping



Plate 9 - Section through pits [034] and [018]



Plate 10 - Mid-ex view of pit [016]



Plate 11 - Pre-ex view of pit [024]



Plate 12 - N-facing section of pit [001]

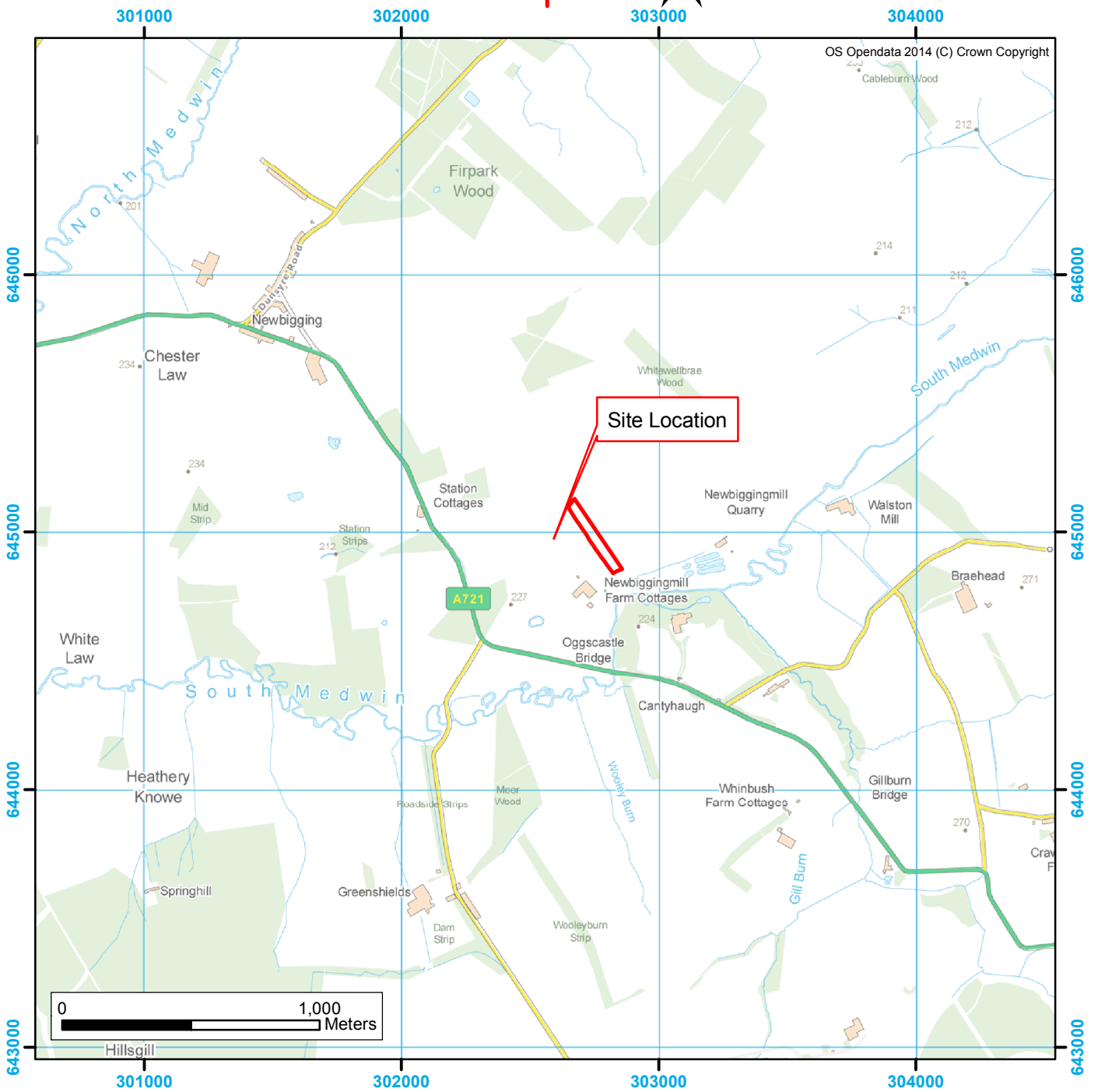
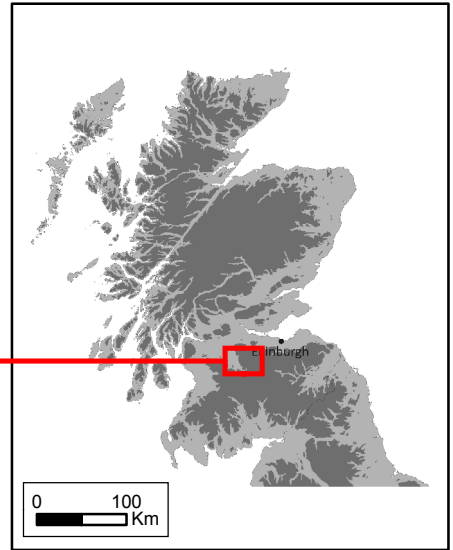
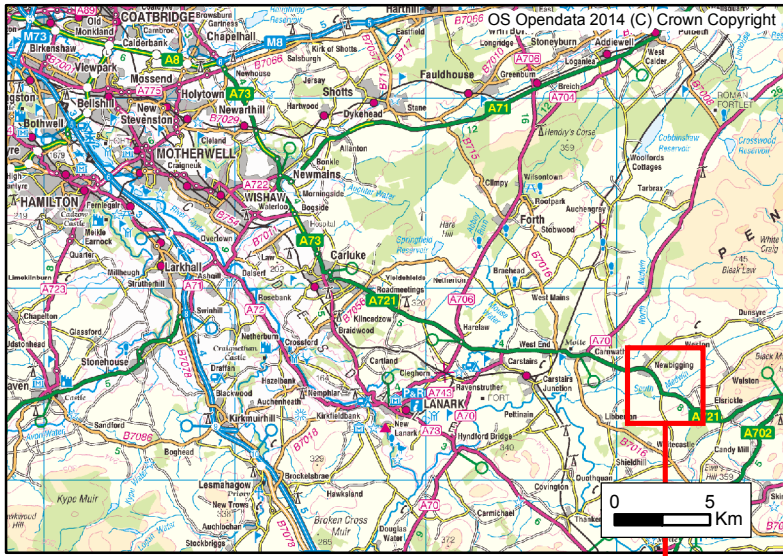


Figure 1: Site Location Plan

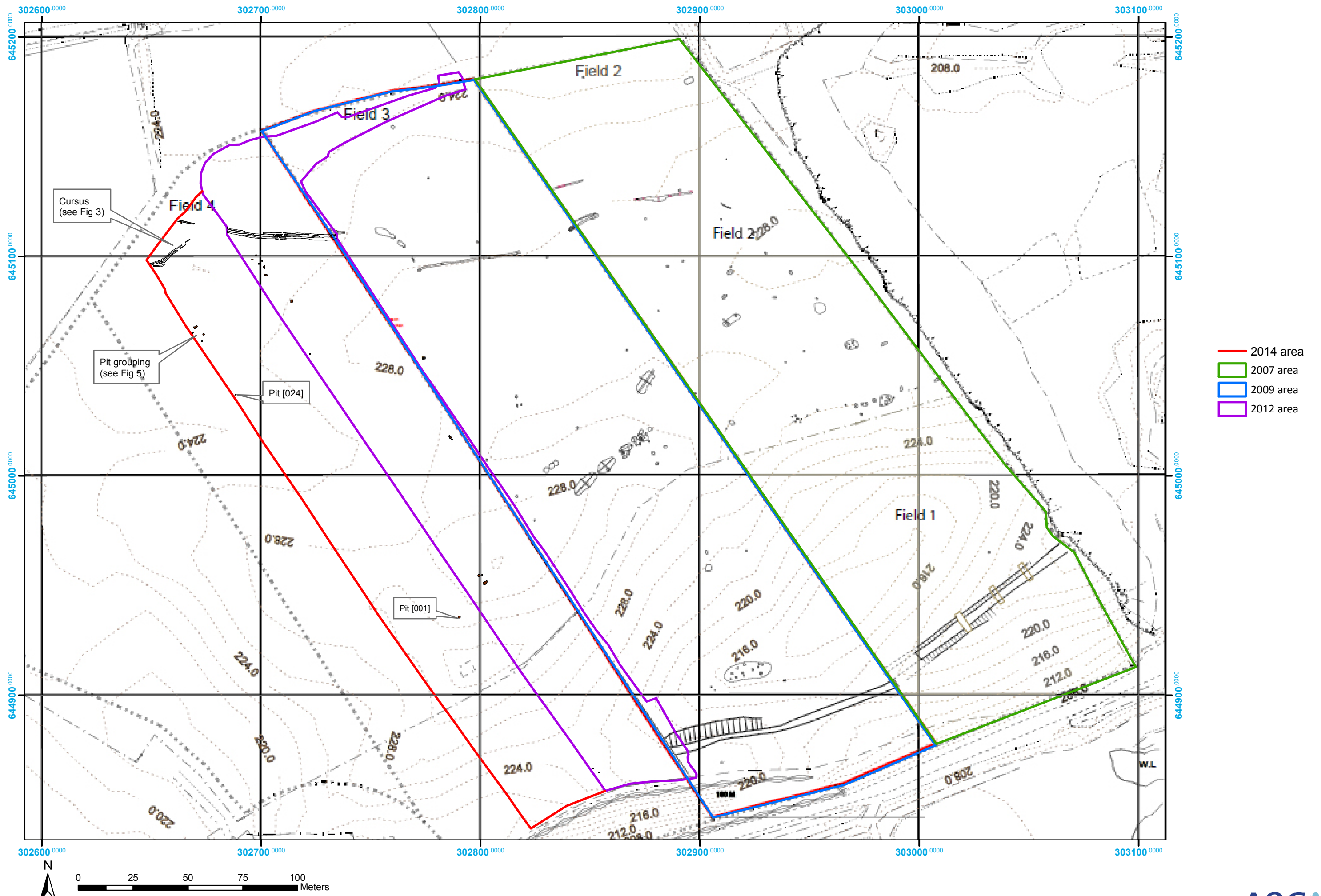


Figure 2: Location of features compared with previous excavations

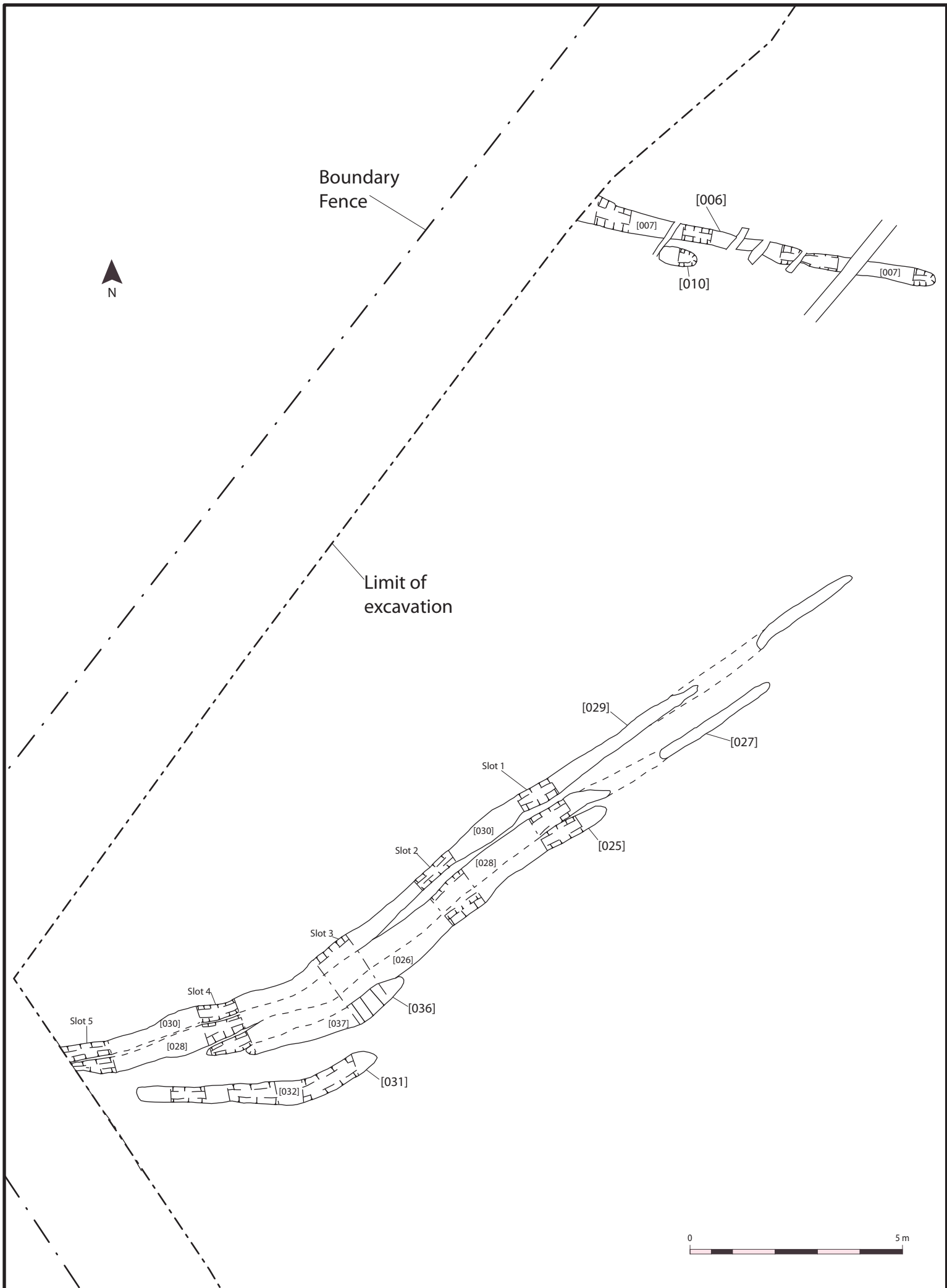
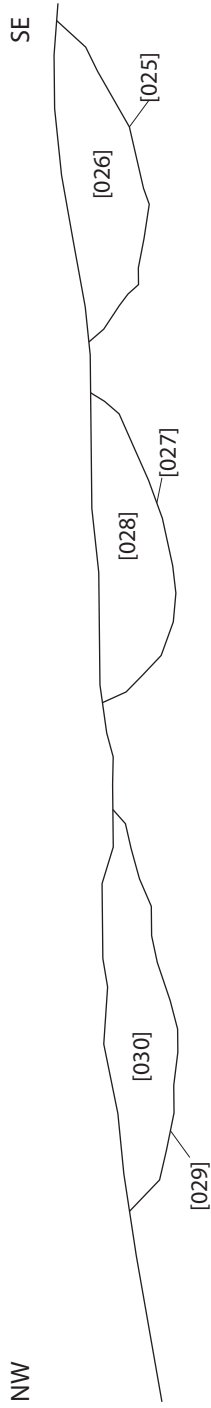
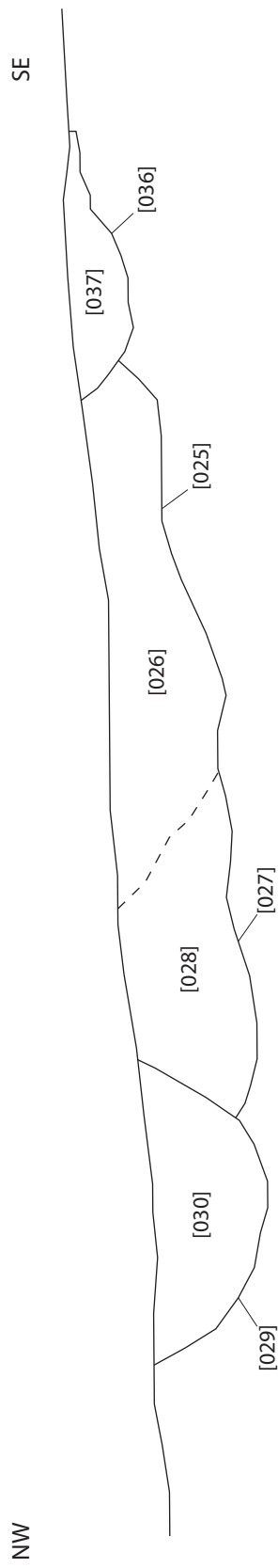


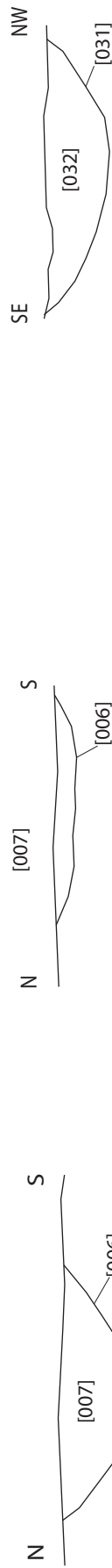
Figure 3 - Plan of cursus monument ditches and pit [010]



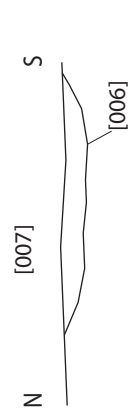
SW-facing section of ditches [025], [027], and [029] - slot 1



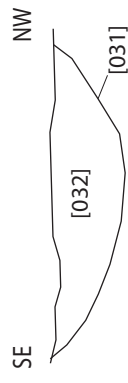
SW-facing section of ditches [025], [027], [029] and [036] - slot 3



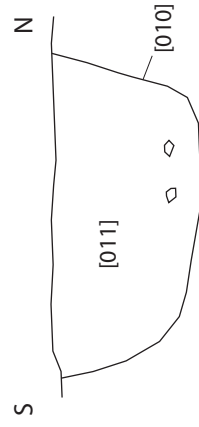
W-facing section of ditch [006] - slot 2



W-facing section of ditch [006] - slot 1



NE-facing section of ditch [031]



E-facing section of pit [010]



Figure 4 - Sections of cursus ditches and pit [010]

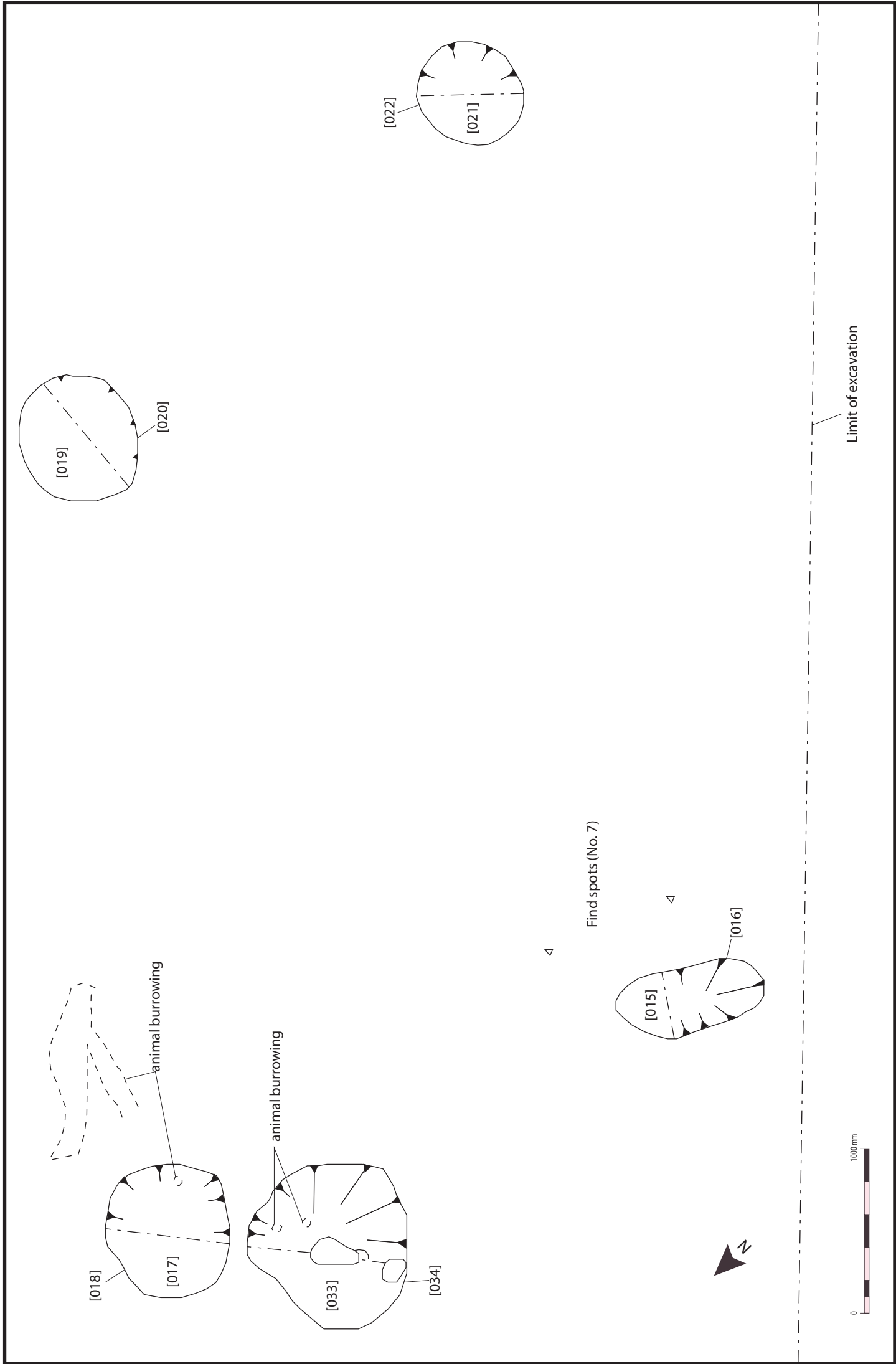
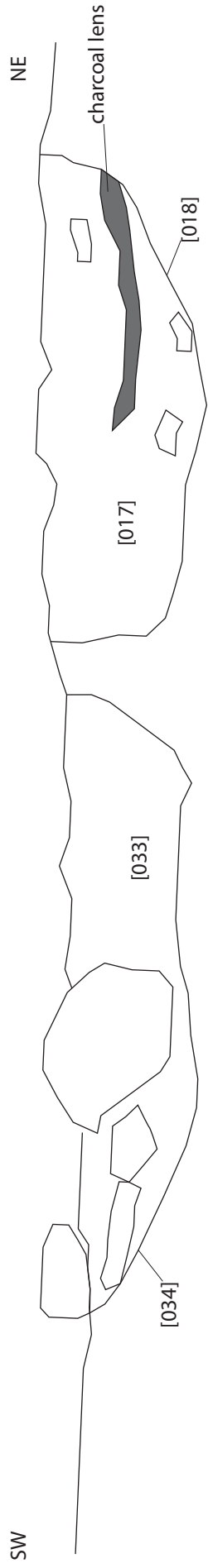
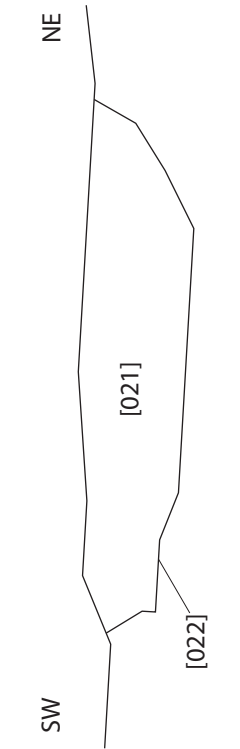


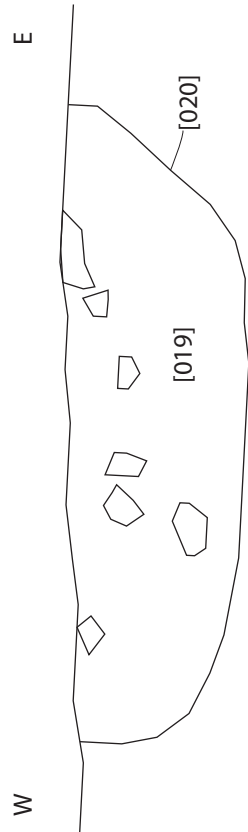
Figure 5 - Plan of pit grouping



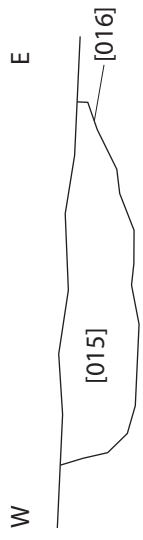
SE-facing section of pits [034] & [018]



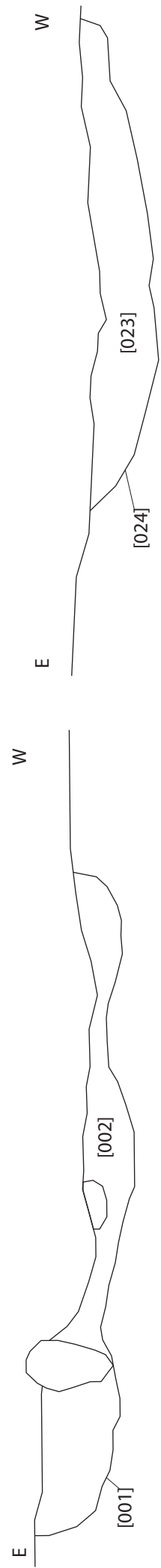
SE-facing section of pit [022]



S-facing section of pit [020]



S-facing section of pit [016]



N-facing section of pit [001]

N-facing section of pit [024]



Figure 6 - Sections of pit grouping features and isolated pits [001] and [024]

Newbigging Quarry, 2014 Archaeological Works: Data Structure Report

Section 2: Appendices

Appendix 1: Context Descriptions

Context No.	Description and Interpretation
001	Isolated sub-rectangular cut with moderate sides and an undulating base measuring 1.16 m by 0.97 m by 0.07 m. Situated on a north facing slope at SE end of stripped area. Filled by deposit (002). Prehistoric pit
002	Moderately compact black sand with frequent charcoal flecks and small to medium heat affected stones. Measures 1.16 m by 0.97 m by 0.07 m. Fill of pit [001]
003	Dark brown silty sand with abundant small to large rounded stones and occasional boulders up to 0.9 m deep. Under topsoil in SE area of strip. Colluvium
004	Dark greyish brown sandy loam with occasional stone inclusions between 0.28 m and 0.45 m deep. Topsoil
005	Orange sands and gravels Natural subsoil
006	Linear cut with steep sides and a concave base aligned E-W running W out of quarry area and E end terminating within stripped area. Measures 8.73 m by 0.7 m by 0.13m. Ditch becomes shallower and thinner to E end. Pit [010] to immediate S. Prehistoric ditch
007	Moderately compact dark greyish brown silty sand with occasional charcoal flecks and small stone inclusions. Cut by modern service track towards E end. Measures 8.73 m by 0.7 m by 0.13 m. Fill of ditch [006]
008	Same as ditch [006]
009	Same as deposit [007]
010	Oblong shaped cut with steep sides and a concave base aligned E-W. Situated to immediate S of ditch [006]. Measures 0.88 m by 0.42 m by 0.19 m. Filled by deposit [011]. Prehistoric cut
011	Moderately compact dark greyish brown silty sand with frequent charcoal inclusions and occasional small stones. Measures 0.88 m by 0.42 m by 0.19 m. Fill of pit [010]
012-014	Void
015	Mid greyish and reddish brown silty sand with frequent small to medium stone inclusions and occasional charcoal lumps and flecks. Measures 0.92 m by 0.42 m by 0.1 m Fill of pit [016]
016	Oblong shaped cut with very steep W edge and moderate E edge with flat to concave base. Aligned N-S measuring 0.92 m by 0.42 m by 0.1 m. Situated to NW edge of pit grouping Prehistoric pit
017	Dark greyish brown silty sand with frequent small to medium stone and frequent charcoal lumps and flecks. Possible lens of charcoal rich soil through centre. Measures 0.8 m by 0.74 m by 0.28 m. Fill of pit [018]
018	Circular cut with steep sides and a flat to concave base filled by deposit [017]. Immediately SW of pit [034]. Measures 0.8 m by 0.74 m by 0.28 m. Filled by deposit [017]. Part of pit grouping along with [020], [022], and [034]. Prehistoric pit
019	Dark greyish brown silty sand with frequent small to medium stone and frequent charcoal lumps and flecks. Lenses of reddish brown sand at sides due to slumping. Measures 0.8 m by 0.72 m by 0.23 m. Fill of pit [020]
020	Circular cut with steep to vertical sides and a flat base filled by deposit [019]. Measures 0.8 m by 0.72 m by 0.23 m. Part of pit grouping along with [018], [022] and [034]. Prehistoric pit
021	Dark reddish brown silty sand with lenses of dark grey silty sand throughout and with frequent stone and charcoal inclusions. Measures 0.65 m by 0.61 m by 0.13 m.

	Fill of pit [022]
022	Circular cut with steep sides and a flat base filled by deposit [021]. Measures 0.65 m by 0.61 m by 0.13 m. Part of pit grouping along with [018], [020], and [034] Prehistoric pit
023	Dark reddish brown silty sand frequent small stone and occasional charcoal inclusions. Measures 0.9 m by 0.55 m by 0.12 m. Fill of pit [024]
024	Sub rectangular cut with steep sides and an irregular base aligned E-W. Filled by deposit [023]. Measures 0.9 m by 0.55 m by 0.12 m. Situated approx. 20 m SE of pit grouping. Prehistoric pit
025	Linear cut aligned NE-SW with moderate to steep sides and a concave base. Immediately parallel to and cutting fill of ditch [027]. Measures 11.8 m by 0.38 m by 0.1 to 0.15 m deep. Terminates at SW and NE ends within stripped area. Cursus ditch – additional
026	Compact mid greyish silty sand with occasional small to medium stone inclusions and occasional charcoal flecks. Truncated by ditch cut [036] along part of its SE edge. Measures 11.8 m by 0.38 m by 0.1 to 0.15 m. Fill of ditch [025]
027	Curvilinear cut aligned NE-SW and curving WSW at SW end out of excavation area. Very ephemeral at NE end due to plough damage and most likely would have continued further NE. WSW end also very shallow. Measures 18.66 m by 0.42 m by 0.36 m. Ditch [029] is to the NW and ditch [025] to the SE. Cursus ditch – original
028	Compact mid greyish silty sand with occasional small to medium stone inclusions and occasional charcoal flecks. Truncated by ditch [025] to SE and [029] to the NW. Measures 18.66 m by 0.42 m by 0.36 m. Fill of ditch [027]
029	Curvilinear cut aligned NE-SW and curving WSW at SW end out of excavation area. Very ephemeral at NE end due to plough damage and most likely would have continued further NE. Cuts ditch deposit [028] and filled by deposit [030]. Measures 21.6 m by 0.58 m by 0.32 m. Cursus ditch - additional
030	Compact mid greyish silty sand with occasional small to medium stone inclusions and occasional charcoal flecks. Measures 21.6 m by 0.58 m by 0.32 m. Fill of ditch [029]
031	Curvilinear cut aligned NE-SW before curving WSW and SW end. Gently sloping sides onto a concave base. Measures 5.76 m by 0.56 m by 0.18 m. Terminates at WSW and NE ends within stripped area. 0.5 m to the SE of other ditches but still curves parallel to them. Cursus ditch – outlying
032	Compact mid greyish silty sand with occasional small to medium stone inclusions and occasional charcoal flecks. Measures 5.76 m by 0.56 m by 0.18 m. Fill of ditch [032]
033	Dark reddish brown silty sand with lenses of dark grey silty sand throughout and with frequent stone and charcoal inclusions. Measures 1 m by 0.96 m by 0.16 m. Fill of pit [034]
034	Sub-circular cut with steep sides and irregular base immediately SW of pit [018] and part of pit grouping along with [018], [020] and [022]. Filled by deposit [033] Measures 1 m by 0.96 m by 0.16 m. Prehistoric pit
035	Orange sand Natural subsoil around pit grouping
036	Curvilinear cut aligned NE-SW then curving WSW with moderate sides and a concave base. Truncates SE edge of ditch fill [026]. Measures 4.16 m by 0.34 m by 0.09 m. Cursus ditch – additional
037	Compact mid greyish silty sand with occasional small to medium stone inclusions and occasional charcoal flecks. Measures 4.16 m by 0.34 m by 0.09 m. Fill of ditch [036]

Appendix 2: Photographic Register

Digital Photographs

Frame	Description	From	Date
1	N-facing section of pit [001]	N	4/9/14
2	General view of pit [001]	E	4/9/14
3	General view of pit [001]	W	4/9/14
4	General view of pit [001]	NW	4/9/14
5	Possible cursus ditches – pre ex	NE	4/9/14
6	Possible cursus ditches – pre ex	W	4/9/14
7	Modern service track	N	4/9/14
8	Post ex view of pit [001]	NW	5/9/14
9	NW-facing section of ditch [029]	NW	5/9/14
10	Detail view of ephemeral cursus ditches	NW	5/9/14
11	Detail view of ephemeral cursus ditches	NW	5/9/14
12	E-facing section of ditch [006] – slot 1	E	5/9/14
13	E-facing section of ditch [006] and [008]	E	5/9/14
14	W-facing section of ditch [008]	W	5/9/14
15	E-facing section of pit [010] and ditch [006] – slot 2	E	5/9/14
16	W-facing section of ditch [006] – slot 2	W	5/9/14
17	E-facing section of pit [010] and ditch [006] – slot 2	E	5/9/14
18	E-facing section of pit [010]	E	5/9/14
19	E-facing section of ditch [006] – slot 2	E	5/9/14
20	E-facing section of ditch [008]	E	5/9/14
21-22	General shot of ditch [008] with terminus excavated	Var	5/9/14
23	E-facing section of ditch [006] – slot 3	E	5/9/14
24-25	Possible truncation of cursus	NE	5/9/14
26	Post ex view of ditch [008]	E	8/9/14
27	Modern truncation of ditch [008]	NE	8/9/14
28	N-facing section of ditch [006] showing modern truncation	N	8/9/14
29	Detail view to east of section	N	8/9/14
30	Detail view to west of section	N	8/9/14
31	Post ex view of ditch [006]	E	8/9/14
32	Post ex view of ditch [006] and [008]	W	8/9/14
33	Oblique SE-facing section of ditch [006]	SE	8/9/14
34	Post ex view of pit [010]	N	8/9/14
35	Pre-ex view of pit [012]	SW	9/9/14
36	SW-facing section of pit [012] – mid ex	SW	9/9/14
37-38	General shots of pit [012] – mid ex	Var	9/9/14
39-40	Possible pit [012] with stone fully revealed	Var	9/9/14
41	Pre-ex of cursus ditches S of [006]	W	9/9/14
42	Pre-ex of cursus ditches S of [006]	NE	9/9/14
43	E-facing section of ditches [025]-[029] – slot 1	W	9/9/14
44	W-facing section of ditches [025]-[029] – slot 1	E	9/9/14
45	E-facing section of ditches [025]-[029] – slot 2	W	10/9/14
46	W-facing section of ditches [025]-[029] – slot 2	E	10/9/14
47	W-facing section of ditches [025]-[029] – slot 3	E	11/9/14

48	E-facing section of ditches [025]-[029] – slot 3	W	11/9/14
49	W-facing section of ditches [025]-[029] – slot 4	E	11/9/14
50	E-facing section of ditches [025]-[029] – slot 4	W	11/9/14
51	Post ex shots of ditch [029]	W	11/9/14
52	Post ex shots of ditch [029]	W	11/9/14
53	Post ex shots of ditch [029]	W	11/9/14
54	Post ex shots of ditch [029]	W	11/9/14
55	NW-facing section of ditch [031] – slot 1	SE	11/9/14
56	SE-facing section of ditch [031] – slot 1	NW	11/9/14
57	NW-facing section of ditch [031] – slot 2	SE	11/9/14
58	SE-facing section of ditch [031] – slot 2	NW	11/9/14
59	NW-facing section of ditch [031] – slot 3	SE	11/9/14
60	SE-facing section of ditch [031] – slot 3	NW	11/9/14
61-62	Pre-ex view of pit [024]	S	11/9/14
63	N-facing section of pit [024]	S	11/9/14
64	Post ex pit [024]	S	11/9/14
65	General view of pit cluster	S	12/9/14
66	General view of pit cluster	W	12/9/14
67	SE-facing section of pit [022]	SE	12/9/14
68	General shot of pit [022]	SW	12/9/14
69	S-facing section of pit [020]	S	12/9/14
70	General shot of pit [020]	E	12/9/14
71	SE-facing section of pits [034] and [018]	SE	12/9/14
72	General shot of pits [034] and [018]	NE	12/9/14
73	SW-facing section of pit [016]	SW	12/9/14
74	General shot of pit [016]	SE	12/9/14
75	Post ex of pit [016]	E	12/9/14
76	Post ex of pits [034] and [018]	NW	15/9/14
77	Post ex view of pits [016], [034] and [018]	SE	15/9/14
78	Post ex of pit [020]	E	15/9/14
79	Post ex of pit [022]	NE	15/9/14
80	View of pits [020] and [022]	S	15/9/14
81	General shot of pit cluster	S	15/9/14
82	General shot of pit cluster	W	15/9/14
83	W-facing section of ditches [027] and [029]	W	15/9/14
84-89	Post ex view of cursus ditches from NE to SW	NE	16/9/14
90	Post ex view of cursus ditches	SW	16/9/14

Black & White film 1

Frame	Description	From	Date
1-2	Registration	-	4/9/14
3-4	N-facing section of pit [001]	N	4/9/14
5-6	General view of pit [001]	E	4/9/14
7-8	Possible cursus ditches – pre ex	NE	4/9/14
9-10	Possible cursus ditches – pre ex	W	4/9/14
11	Modern service track	N	4/9/14

Black & White film 2

Frame	Description	From	Date
1-2	Registration	-	5/9/14
3-4	General view of pit [001]	NW	4/9/14
5-6	E-facing section of ditch [006] – slot 1	E	5/9/14
7-8	E-facing section of ditch [006] and [008]	E	5/9/14
9-10	W-facing section of ditch [008]	W	5/9/14
11-12	E-facing section of pit [010] and ditch [006] – slot 2	E	5/9/14
13-14	W-facing section of ditch [006] – slot 2	W	5/9/14
15	E-facing section of pit [010] and ditch [006] – slot 2	E	5/9/14
16	E-facing section of pit [010]	E	5/9/14
17	E-facing section of ditch [006] – slot 2	E	5/9/14
18	E-facing section of ditch [008]	E	5/9/14
19-20	E-facing section of ditch [006] – slot 3	E	5/9/14
21-22	Possible truncation of cursus	NE	5/9/14
23-24	Possible truncation of cursus	NE	5/9/14
25-26	Post ex view of ditch [008]	E	8/9/14
27-28	N-facing section of ditch [006] showing modern truncation	N	8/9/14
29-30	Post ex view of ditch [006]	E	8/9/14
31-32	Post ex view of ditch [006] and [008]	W	8/9/14
33-34	Oblique SE-facing section of ditch [006]	SE	8/9/14
35-36	Post ex view of pit [010]	N	8/9/14

Black & White Film 3

Frame	Description	From	Date
1-2	Registration	-	5/9/14
3-4	SW-facing section of pit [012] – mid ex	SW	9/9/14
5-6	Pre-ex of cursus ditches S of [006]	W	9/9/14
7-8	Pre-ex of cursus ditches S of [006]	NE	9/9/14
9-10	E-facing section of ditches [025]-[029] – slot 1	W	9/9/14
11-12	W-facing section of ditches [025]-[029] – slot 1	E	9/9/14
13-14	E-facing section of ditches [025]-[029] – slot 2	W	10/9/14
15-16	W-facing section of ditches [025]-[029] – slot 2	E	10/9/14
17-18	W-facing section of ditches [025]-[029] – slot 3	E	11/9/14
19-20	E-facing section of ditches [025]-[029] – slot 3	W	11/9/14
21-22	W-facing section of ditches [025]-[029] – slot 4	E	11/9/14
23-24	E-facing section of ditches [025]-[029] – slot 4	W	11/9/14
25-26	NW-facing section of ditch [031] – slot 1	SE	11/9/14
27-28	SE-facing section of ditch [031] – slot 1	NW	11/9/14
29-30	NW-facing section of ditch [031] – slot 2	SE	11/9/14
31-32	SE-facing section of ditch [031] – slot 2	NW	11/9/14
33-34	NW-facing section of ditch [031] – slot 3	SE	11/9/14
35-36	SE-facing section of ditch [031] – slot 3	NW	11/9/14

Black & White Film 4

Frame	Description	From	Date
1-2	Pre-ex view of pit [024]	S	11/9/14

3	Registration	-	11/9/14
4-5	N-facing section of pit [024]	S	11/9/14
6-7	Pre ex of pit [022]	E	11/9/14
8-9	Pre ex of pit [020]	E	11/9/14
10-11	Pre ex of pit [018]	E	11/9/14
12-13	Pre ex of pit [034]	E	11/9/14
14-15	Pre ex of pit [016]	E	11/9/14
16-17	Post ex pit [024]	S	11/9/14
18-19	General view of pit cluster	S	12/9/14
20-21	General view of pit cluster	W	12/9/14
22	SE-facing section of pit [022]	SE	12/9/14
23	General shot of pit [022]	SW	12/9/14
24	S-facing section of pit [020]	S	12/9/14
25	General shot of pit [020]	E	12/9/14
26	SE-facing section of pits [034] and [018]	SE	12/9/14
27	General shot of pits [034] and [018]	NE	12/9/14
28	SW-facing section of pit [016]	SW	12/9/14
29	General shot of pit [016]	SE	12/9/14
30	Post ex of pit [016]	E	12/9/14
31	Post ex of pits [034] and [018]	NW	15/9/14
32	Post ex view of pits [016], [034] and [018]	SE	15/9/14
33	Post ex of pit [020]	E	15/9/14
34	Post ex of pit [022]	NE	15/9/14
35	View of pits [020] and [022]	S	15/9/14

Black & White Film 5

Frame	Description	From	Date
1-2	W-facing section of ditches [027] and [029]	W	15/9/14
3-4	Registration	-	15/9/14
5-16	Post ex view of cursus ditches from NE to SW	NE	16/9/14
17-18	Post ex view of cursus ditches	SW	16/9/14

Appendix 3: Drawing Register

Drawing No.	Details	Scale
1	N-facing section of pit [001]	1:10
2	Plan of pit [001]	1:20
3	E-facing section of ditch [006] – slot 1	1:10
4	E-facing sections of pit [010] and ditch [006] – slot 2	1:10
5	W-facing section of ditch [006] – slot 2	1:10
6	E-facing section of ditch [006] – slot 3	1:10
7	W-facing section of ditch [008] – slot 1	1:10
8	E-facing section of ditch [008] – slot 2	1:10
9	Plan of ditches [006] and [008] and pit [010]	1:20
10	SW-facing section of ditches [025], [027] and [029] – slot 1	1:10

11	NE-facing section of ditches [025], [027] and [029] – slot 2	1:10
12	SW-facing section of ditches [025], [027], [029] and [036] – slot 3	1:10
13	E-facing section of ditch [025], [027], and [029] – slot 4	1:10
14	W-facing section of ditch [027] and [029] – slot 5	1:10
15	Plan of ditches [025]-[029], [032] and [036]	1:20
16	SE-facing section of ditch [032] – slot 1	1:10
17	NW- facing section of ditch [032] – slot 2	1:10
18	SE- facing section of ditch [032] – slot 3	1:10
19	Plan of pit [024]	1:20
20	N-facing section of pit [024]	1:10
21	Plan of pits [016], [018], [020], [022] and [034]	1:20
22	SE-facing section of pit [022]	1:20
23	S-facing section of pit [020]	1:20
24	SE-facing section of pits [034] and [018]	1:20
25	S-facing section of pit [016]	1:20

Appendix 4: Finds Register

Finds No.	Context No.	Description
1	U/S	Prehistoric ceramic body shard
2	015	Prehistoric ceramic
3	021	Flint fragment
4	023	Prehistoric ceramics
5	021	Prehistoric ceramics
6	021	Flint flake
7	035	Prehistoric ceramics
8	019	Possible steatite fragment
9	019	Prehistoric ceramics
10	017	Prehistoric ceramics
11	017	Flint flakes and fragments
12	033	Flint flake
13	015	Prehistoric ceramic

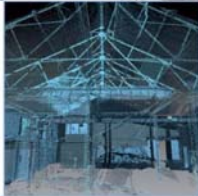
Appendix 5: Bulk Sample Register

Context No.	Quantity (litres)
002	20
007	40
009	20
011	20

015	10
017	10
019	10
021	10
023	30
026	20
028	20
030	20
032	20
033	10
037	10

Appendix 6: Discovery and Excavation in Scotland Entry

LOCAL AUTHORITY:	South Lanarkshire
PROJECT TITLE/SITE NAME	Newbigging Mill Quarry
PROJECT CODE:	1911
PARISH:	Carnwath
NAME OF CONTRIBUTOR:	Kevin Paton
NAME OF ORGANISATION:	AOC Archaeology Group
TYPE(S) OF PROJECT:	Monitored Strip & Excavation
NMRS NO(S):	-
SITE/MONUMENT TYPE(S):	Cursus Monument, Prehistoric pits
SIGNIFICANT FINDS:	Prehistoric ceramics
NGR (2 letters, 6 figures)	NT 0283 4505
START DATE (this season)	1 st September 2014
END DATE (this season)	16 th September 2014
PREVIOUS WORK (incl. DES ref.)	Hunter Blair (2007) DES Newbigging Quarry Excavation Hunter Blair (2009) DES Newbigging Quarry Evaluation Rob Engl (2012) DES Newbigging Quarry Monitored Strip & excavation
MAIN (NARRATIVE) DESCRIPTION: (May include information from other fields)	<p>A monitored topsoil strip was conducted as part of the ongoing programme of archaeological works related to the extension to Newbigging Quarry, South Lanarkshire. These works recorded a number of archaeological features including the western extension of the Neolithic cursus monument revealed during the 2009 and 2012 excavations.</p> <p>Furthermore, two isolated pits and a pit grouping that may continue further west was also recorded. These proved to be broadly similar in nature to the archaeological features recorded by excavations in 2007, 2009 and 2012 prior to previous extensions of the quarry. The excavation also produced a small assemblage of prehistoric ceramics.</p>
PROPOSED FUTURE WORK:	Post-excavation and publication programme.
CAPTION(S) FOR ILLUSTRS:	N/A
SPONSOR OR FUNDING BODY:	Tarmac Ltd
ADDRESS OF MAIN CONTRIBUTOR:	AOC Archaeology Group, Edgefield Road Industrial Estate, Edgefield Road, Loanhead, Midlothian, EH20 9SY edinburgh@aacarchaeology.com
ARCHIVE LOCATION	Archive to be deposited in NMRS



AOC Archaeology Group, Edgefield Industrial Estate, Edgefield Road, Loanhead EH20 9SY
tel: 0131 440 3593 | fax: 0131 440 3422 | e-mail: edinburgh@aocarchaeology.com

www.aocarchaeology.com