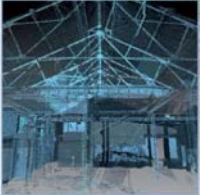
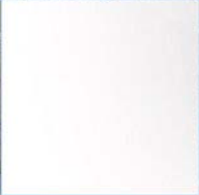


Tomaknock, Crieff: Archaeological Evaluation Data Structure Report

AOC Project 22919
Oasis No. aocarcha1-195313
14th November 2014



Tomaknock, Crieff:

Archaeological Evaluation Data Structure Report

| | |
|--------------------------------|---|
| On Behalf of: | G-S Brown Construction Ltd., St. Madoes Glencarse Perth PH2 7NF |
| National Grid Reference (NGR): | NN 8770 2170 |
| AOC Project No: | 22919 |
| Prepared by: | Kevin Paton |
| Illustration by: | Kevin Paton |
| Date of Fieldwork: | 11 th to 13 th November 2014 |
| Date of Report: | 14 th November 2014 |

This document has been prepared in accordance with AOC standard operating procedures.

Author: Kevin Paton

Date: 14th November 2014

Approved by: Martin Cook

Date: 18th November 2014

Draft/Final Report Stage: Final

Date: 10th December 2014

Enquiries to: AOC Archaeology Group
Edgefield Industrial Estate
Edgefield Road
Loanhead
EH20 9SY

Tel. 0131 440 3593
Fax. 0131 440 3422
e-mail. admin@aocarchaeology.com



www.aocarchaeology.com

Contents

| | Page |
|---|------|
| List of Illustrations | 3 |
| List of Plates | 3 |
| List of Appendices | 3 |
| Abstract..... | 4 |
| 1 INTRODUCTION | 5 |
| 1.1 Background | 5 |
| 1.2 Location..... | 5 |
| 1.3 Archaeological Background | 5 |
| 2 OBJECTIVES | 5 |
| 3 METHODOLOGY | 6 |
| 4 RESULTS | 6 |
| 5 CONCLUSION AND RECOMMENDATIONS..... | 6 |
| 6 REFERENCES | 7 |
| APPENDIX 1: Trench Descriptions | 11 |
| APPENDIX 2: Context Register | 18 |
| APPENDIX 3: Photographic Record | 18 |
| APPENDIX 4: Drawing Register | 19 |
| APPENDIX 5: Samples Register..... | 20 |
| APPENDIX 6: ' <i>Discovery and Excavation in Scotland</i> ' Report..... | 21 |

List of Illustrations

| | |
|----------|--|
| Figure 1 | Site location |
| Figure 2 | Evaluation trench location plan |
| Figure 3 | Plans and sections of Pits in Trench 18 & 19 |

List of Plates

| | |
|---------|--------------------------------|
| Plate 1 | Post ex view of Trench 27 |
| Plate 2 | View of Pits [1801] and [1803] |
| Plate 3 | View of Pit [1901] |

List of Appendices

| | |
|------------|--|
| Appendix 1 | Trench Descriptions |
| Appendix 2 | Context Register |
| Appendix 3 | Photographic Record |
| Appendix 4 | Drawing Register |
| Appendix 5 | Samples Register |
| Appendix 6 | <i>'Discovery and Excavation in Scotland'</i> Report |

Abstract

This report presents the results of an archaeological evaluation undertaken as part of pre-planning works for a proposed development at Tomaknock Farm, Crieff, Perth and Kinross.

The evaluation required a 5% trenching sample of the available development area. A total of 30 trenches of varying lengths and alignments were excavated.

Throughout the majority of the site no significant archaeological features or artefacts were encountered. Three potentially related pit features were encountered on the slope to the NE of the farmstead. Two of the pits were approximately 25 m from a post-medieval quarry road and may relate to the use of the area during this period. The third was further down the slope in a partially waterlogged part of the site.

1 INTRODUCTION

1.1 Background

- 1.1.1 AOC Archaeology Group was commissioned by G-S Brown Construction Ltd. to undertake an archaeological evaluation prior to a planning application for a proposed development at Tomaknock, Crieff, Perth and Kinross. The evaluation was undertaken in order to satisfy the requirements of the local planning authority, Perth and Kinross Council who are advised on archaeological matters by the Perth and Kinross Heritage Trust (PKHT). The works were conducted according to the terms of a *Written Scheme of Investigation* (AOC 2014) approved on behalf of Perth and Kinross Council by PKHT and in accordance with the principles set out in *Scottish Planning Policy* (Scottish Government 2014) and *PAN 2/2011 Planning & Archaeology* (Scottish Government 2011).

1.2 Location

- 1.2.1 The site (centred on NGR NN 8770 2710) is situated within fields surrounding Tomaknock farmstead to the N, E and W (Figure 1). Dollerie Terrace bounds the site to the South, with fields to the E and N and the housing estate of Ritchie Place to the W.

1.3 Archaeological Background

- 1.3.1 There are no known archaeological sites within the development area. A listed building, the 'whitehouse' (NMRS NN82SE 51) lies on the southern boundary. Further post-medieval buildings occur to the E at Tomaknock (NMRS NN82SE 120) and to the S (NMRS NN82SE 119). The former is shown on the 1st edition OS map (Perthshire 1866 XCV) as an unnamed roofed building. It currently survives as a fragmentary single wall. The latter is depicted as 'Cornton' on the 2nd edition OS map (Perthshire 1901 XCV SE) and is described as a 'Cothouse' one storey in height'. This site is now marked by a scatter of stones.
- 1.3.2 An earthwork of 17th/18th century date is located to the NE of the development area at Callum's Hill (NMRS NN82SE8). This is thought to be a military camp attributed to the army of Montrose in 1645 (Hunter 1892). It is also stated that the earthworks were constructed by the Duke of Montrose in 1715 (Name Book 1863).
- 1.3.3 Prehistoric archaeology within the immediate vicinity is represented by an Early Bronze Age Cinerary urn (NMRS NN82SE 39) also recorded on Callum's Hill (Hall & Sheridan 2008). This contained the remains of two children, an adult and the partial remains of a goat. A Neolithic polished stone axe (NMRS NN82SE 42) was also recorded to the NE of the site.

2 OBJECTIVES

- 2.1 The objectives of the archaeological evaluation were:
- i) to determine and assess the character, extent, condition, quality, date and significance of any buried archaeological remains within the proposed development area;
 - ii) should significant archaeological deposits be discovered, to prepare a mitigation strategy compliant with *Scottish Planning Policy* (2014) and *Planning and Archaeology 2/2011* (2011).

3 METHODOLOGY

- 3.1 The evaluation was to consist of machine excavated trenches equating to a minimum 5% sample of the 8.8 hectare development area. This total area was reduced due to the eastern edge of the development not having access permission; two areas of marshy ground designated as flood plain areas that will not be impacted by the development; and the farmstead and access track were not available as the farm buildings are still in use, and are surrounded by overhead service cables. This reduced the total available area to approximately 6.5 hectares (Figure 2).
- 3.2 In total, 1540 m of linear trench was completed using a 16 tonne tracked excavator with a 2.2 m wide ditching bucket. Excavation was undertaken in shallow units/spits until the first significant archaeological horizon. All machine excavation was supervised by an experienced field archaeologist and according to AOC Archaeology Group's standard operating procedures, and as per the methodology within the *Written Scheme of Investigation* (AOC 2014).

4 RESULTS

- 4.1 The archaeological evaluation was undertaken between the 11th to the 14th November 2014. Overall weather conditions were fair allowing for good archaeological visibility throughout the evaluation. In total, 30 trenches were excavated, varying in alignment and length (Figure 2).
- 4.2 The topsoil throughout the site consisted a dark brown silty clay with occasional small stones and rare large stone inclusions. Coal flecks, modern ceramic fragments and modern rubbish were encountered within the top 0.2 m of topsoil throughout the majority of the trenches. The underlying geology was a mixture of pink clay bedrock, orange clayey sand and gravel and reddish brown sandy clay with frequent large boulders (Plate 1).
- 4.3 Three features were recorded within Trenches 18 and 19, either side of the gas main buffer (Figure 3). Two adjacent pits, [1801] and [1803] were revealed in Trench 18 (Plate 2). The trench was extended to reveal their full extent, but was limited due to the presence of the gas main. Pit [1801] was oval shaped with shallow sides and a flat base, measuring 2.5 m by 0.9 m by 0.06 m. It was filled by deposit [1802], which was a mid brown sandy clay with abundant charcoal lumps, visible within the bottom 0.1 m of topsoil. Pit [1803] was only 0.5 m NE of [1801] and was sub-circular with steep sides and a concave base measuring 3.1 m by 2.4 m by 0.4 m. The fill of the pit [1804] was a dark grey silty clay with occasional large stones near the base of the pit. No artefacts were recovered from either pit to allowing for an approximate date.
- 4.4 The other pit [1901] in Trench 19 was sub-oval with steep sides and a flat base measuring 2.1 m by 1.1 m by 0.23 m (Plate 3). It was filled by deposit [1902] which consisted of dark grey gravelly silty sand with occasional coal/charcoal flecks.
- 4.5 All three pits were located on a slope to the east of a former quarry track that runs through the field to the north of the farmstead (Figure 2). The lack of artefactual material within the pits, the existence of deposit [1802] within the topsoil, and the lack of other associated archaeology in the area pre-dating the post medieval period would suggest that the pits are related to the quarry activity in the early 19th century (Roy 1793, OS 1866).

5 CONCLUSION AND RECOMMENDATIONS

- 5.1 From the trenches excavated within the development area, it has been demonstrated that the majority of the area is archaeologically sterile. To the E of the quarry track, the three pits are most likely post medieval pits related to the quarries use in the early 19th century.

- 5.2 No further works are considered necessary within the development area. These recommendations will have to be approved by PKHT on behalf of Perth and Kinross Council.

6 REFERENCES

AOC Archaeology 2014, Tomaknock, Crieff, Perth and Kinross Written Scheme of Investigation
Unpublished AOC project design

Hall, M.A & Sheridan, A 2008 'Callum's Hill, Crieff, Perth and Kinross (Crieff parish), Early Bronze Age cinerary urn and cremated bone', *Discovery Excav Scot, New*, vol.9

Hunter, T 1897 *Illustrated Guide to Perthshire*, 122

Ordnance Survey (Name Book), 1863 Object Name Books of the Ordnance Survey (6 inch and 1/2500 scale) Book No.19, 17

Ordnance Survey 1866 Perthshire XCV

Ordnance Survey 1901 Perthshire XCV SE

Roy, W. 1793 *Plan shewing the relative situation of the Roman works at Ardoch, Strageth, and Dealgin Ross*

Scottish Government 2014 Scottish Planning Policy 2014

Scottish Government 2011 Planning And Archaeology 2/2011



Plate 1 - Post ex view of Trench 27



Plate 2 - View of Pits [1801] and [1803]



Plate 3 - View of Pit [1901]

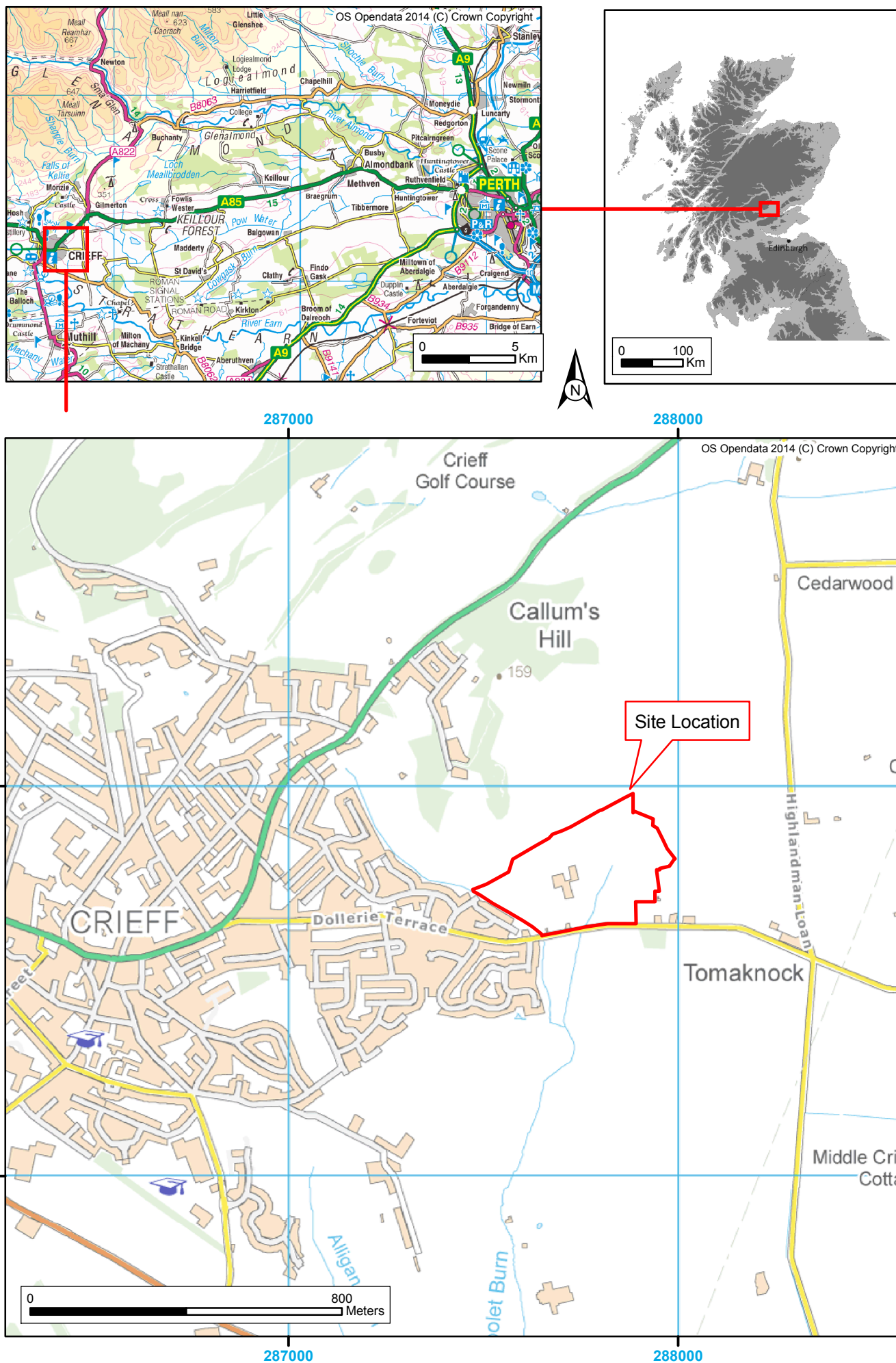


Figure 1: Site Location Plan

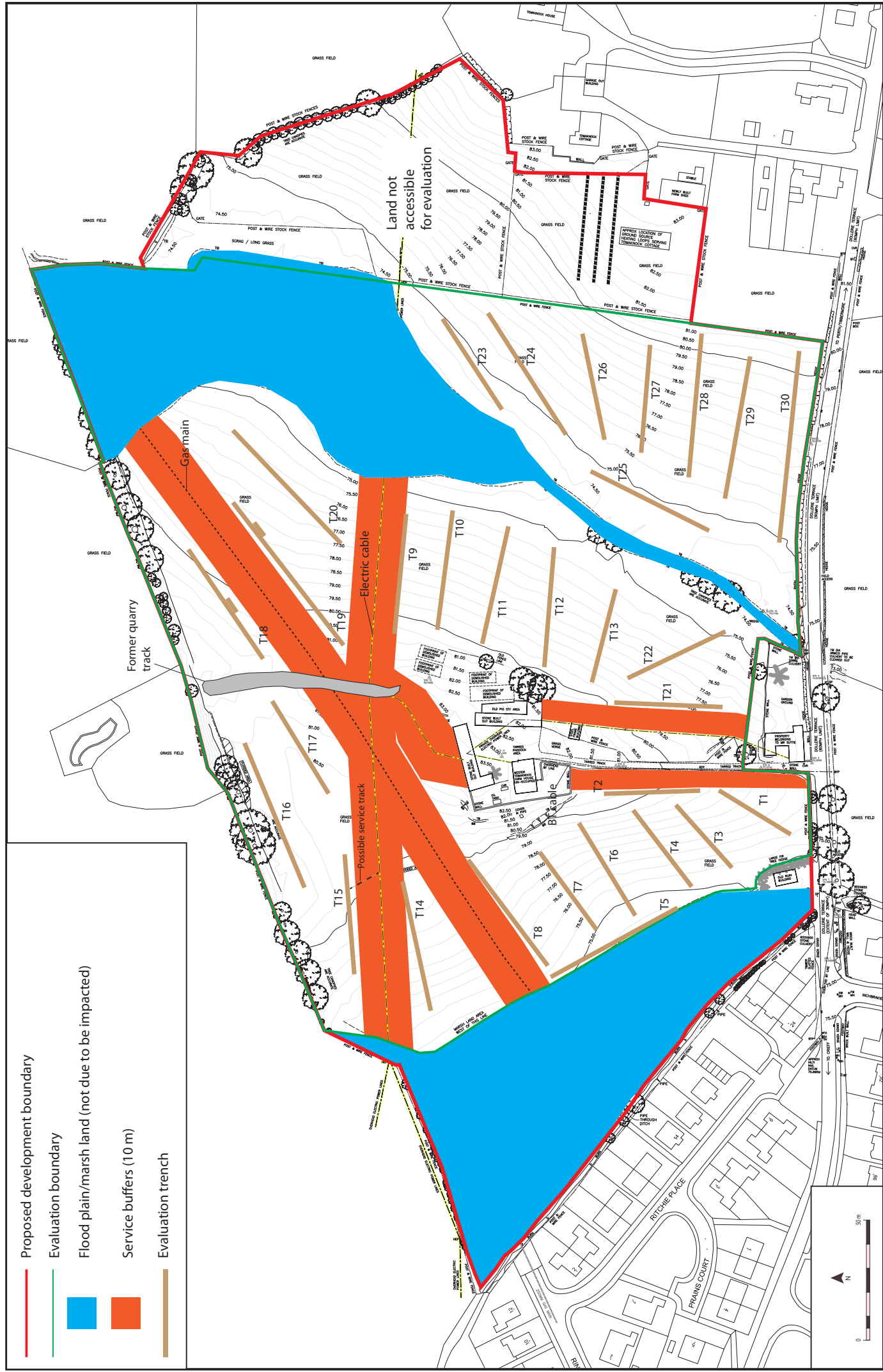
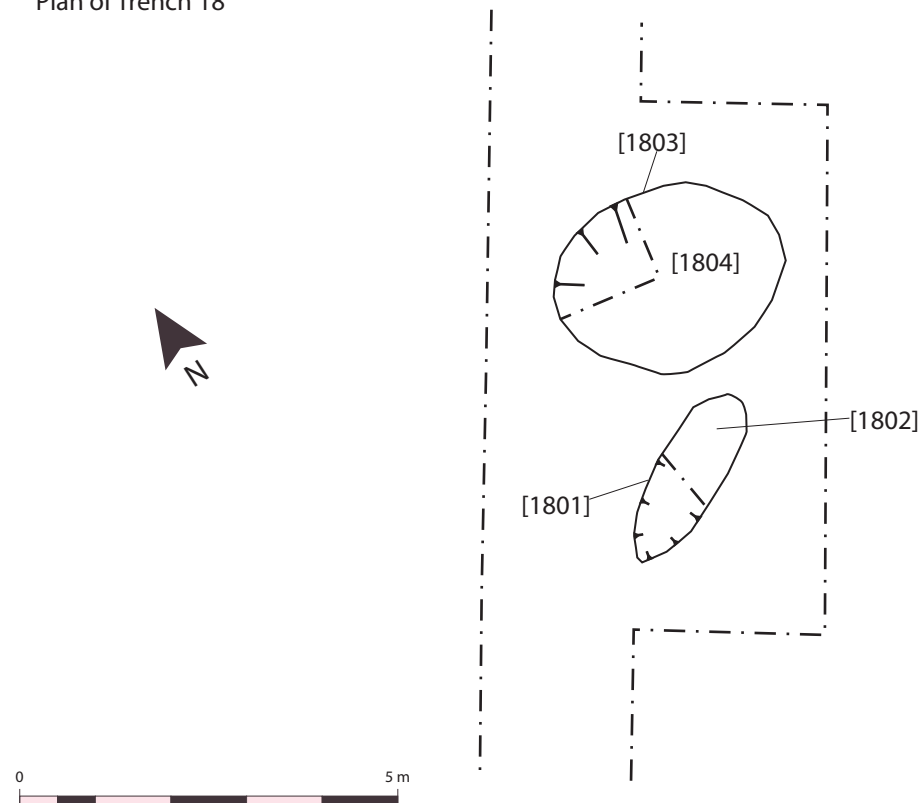


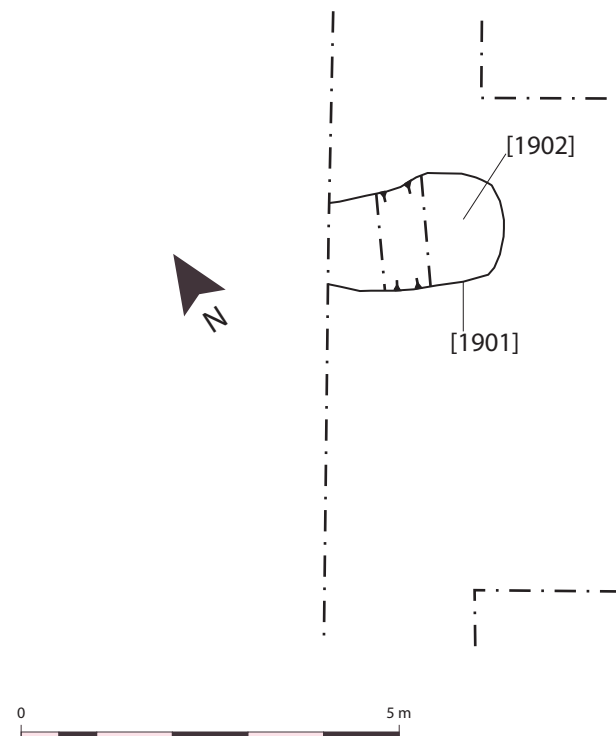
Figure 2 - Evaluation trench location plan

(based on a drawing provided by the client)

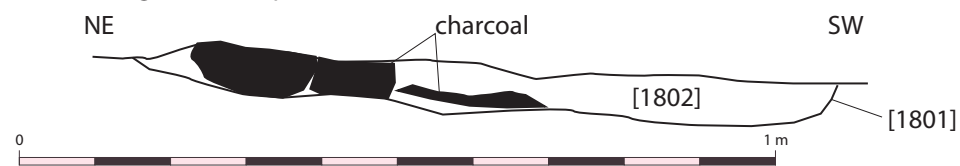
Plan of Trench 18



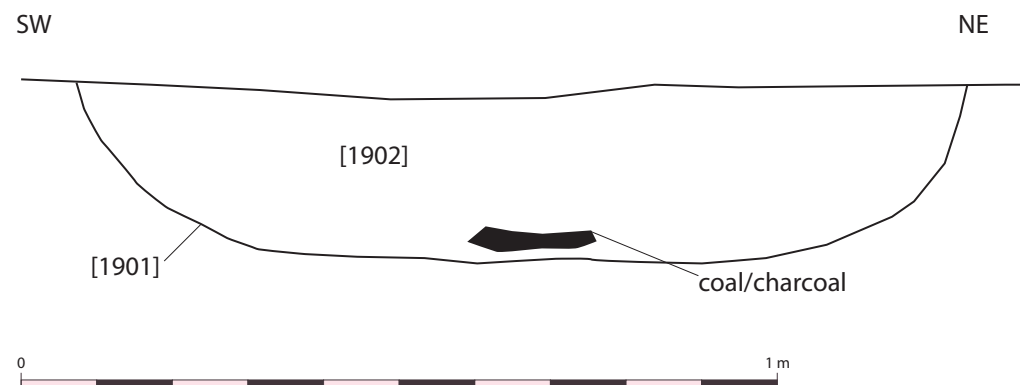
Plan of Trench 19



NW-facing section of pit [1801]



SE-facing section of pit [1901]



NW & NE facing section of pit [1803]

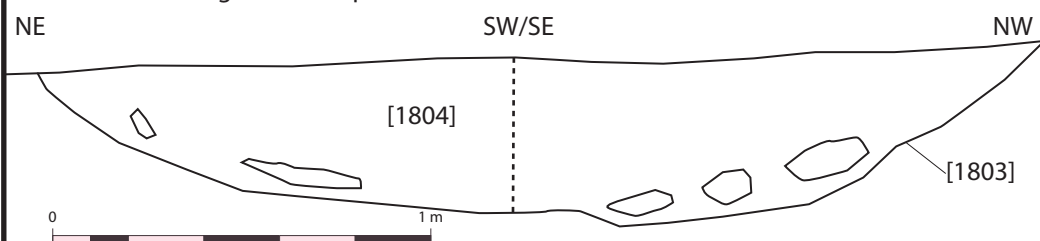


Figure 3 - Plan of Trench 18 and 19 and sections of features

Tomaknock, Crieff: Archaeological Evaluation Data Structure Report

Section 2: Appendices

APPENDIX 1: Trench Descriptions

Trench 1

| | |
|------------------------------|---|
| <i>Dimensions</i> | 35 m by 2.2 m |
| <i>Total Area</i> | 77 m ² |
| <i>Excavated Orientation</i> | SSW to NNE |
| <i>Soil Make-up</i> | Topsoil – dark brown silty clay with occasional small angular stones and rare large stone inclusions with coal flecks throughout – max depth 0.65 m |
| <i>Depth of Excavation</i> | 0.65 m |
| <i>Significant Features</i> | None |
| <i>Other Features</i> | Post medieval ditch at 3.1 m to 4.4 m aligned NE-SW measuring 0.4 m wide by 0.13 m deep, containing white ce and crushed (??) red tile fragments. |
| <i>Natural Subsoil</i> | Reddish brown silty clay until 4.8 m then pink bedrock |
| <i>Finds</i> | None |

Trench 2

| | |
|------------------------------|---|
| <i>Dimensions</i> | 40 m by 2.2 m |
| <i>Total Area</i> | 88 m ² |
| <i>Excavated Orientation</i> | S to N |
| <i>Soil Make-up</i> | Topsoil – dark brown silty clay with occasional small angular stones and rare large stone inclusions with coal flecks throughout – max depth 0.37 m |
| <i>Depth of Excavation</i> | 0.37 m |
| <i>Significant Features</i> | None |
| <i>Other Features</i> | None |
| <i>Natural Subsoil</i> | Pink bedrock with some patches of yellow sand until 12.2 m then yellow sand and gravel until 17.6 m then pink bedrock |
| <i>Finds</i> | None |

Trench 3

| | |
|------------------------------|---|
| <i>Dimensions</i> | 35 m by 2.2 m |
| <i>Total Area</i> | 77 m ² |
| <i>Excavated Orientation</i> | NE to SW |
| <i>Soil Make-up</i> | Topsoil – dark brown silty clay with occasional small angular stones and rare large stone inclusions with coal flecks throughout – max depth 0.42 m |
| <i>Depth of Excavation</i> | 0.42 m |
| <i>Significant Features</i> | None |
| <i>Other Features</i> | None |
| <i>Natural Subsoil</i> | Pink bedrock to 19.4 m then yellow sand and gravel to 24.5 m then reddish brown sandy clay |
| <i>Finds</i> | None |

Trench 4

| | |
|------------------------------|---|
| <i>Dimensions</i> | 40 m by 2.2 m |
| <i>Total Area</i> | 88 m ² |
| <i>Excavated Orientation</i> | NE to SW |
| <i>Soil Make-up</i> | Topsoil – dark brown silty clay with occasional small angular stones and rare large stone inclusions with coal flecks throughout – max depth 0.55 m |
| <i>Depth of Excavation</i> | 0.55 m |
| <i>Significant Features</i> | None |
| <i>Other Features</i> | None |
| <i>Natural Subsoil</i> | Pink bedrock to 16 m then reddish brown sandy clay |
| <i>Finds</i> | None |

Trench 5

| | |
|-------------------|---------------|
| <i>Dimensions</i> | 60 m by 2.2 m |
|-------------------|---------------|

| | |
|------------------------------|---|
| <i>Total Area</i> | 132 m ² |
| <i>Excavated Orientation</i> | SE to NW |
| <i>Soil Make-up</i> | Topsoil – dark brown silty clay with occasional small angular stones and rare large stone inclusions with coal flecks throughout – max depth 0.48 m |
| <i>Depth of Excavation</i> | 0.48 m |
| <i>Significant Features</i> | None |
| <i>Other Features</i> | Rubble Drain at 25.7 m aligned NE-SW; Rubble drain at 35 m to 45 m aligned SSE-NNW |
| <i>Natural Subsoil</i> | Orange sandy clay and reddish brown sandy clay with occasional boulders to 30 m then reddish brown sandy clay to 52 m then grey clay |
| <i>Finds</i> | None |

Trench 6

| | |
|------------------------------|---|
| <i>Dimensions</i> | 45 m by 2.2 m |
| <i>Total Area</i> | 99 m ² |
| <i>Excavated Orientation</i> | SW to NE |
| <i>Soil Make-up</i> | Topsoil – dark brown silty clay with occasional small angular stones and rare large stone inclusions with coal flecks throughout – max depth 0.48 m |
| <i>Depth of Excavation</i> | 0.48 m |
| <i>Significant Features</i> | None |
| <i>Other Features</i> | None |
| <i>Natural Subsoil</i> | Reddish brown sandy clay to 40 m then pink bedrock |
| <i>Finds</i> | None |

Trench 7

| | |
|------------------------------|---|
| <i>Dimensions</i> | 40 m by 2.2 m |
| <i>Total Area</i> | 88 m ² |
| <i>Excavated Orientation</i> | SW to NE |
| <i>Soil Make-up</i> | Topsoil – dark brown silty clay with occasional small angular stones and rare large stone inclusions with coal flecks throughout – max depth 0.51 m |
| <i>Depth of Excavation</i> | 0.51 m |
| <i>Significant Features</i> | None |
| <i>Other Features</i> | None |
| <i>Natural Subsoil</i> | Reddish brown sandy clay |
| <i>Finds</i> | None |

Trench 8

| | |
|------------------------------|---|
| <i>Dimensions</i> | 55 m by 2.2 m |
| <i>Total Area</i> | 121 m ² |
| <i>Excavated Orientation</i> | SW to NE |
| <i>Soil Make-up</i> | Topsoil – dark brown silty clay with occasional small angular stones and rare large stone inclusions with coal flecks throughout – max depth 0.48 m |
| <i>Depth of Excavation</i> | 0.48 m |
| <i>Significant Features</i> | None |
| <i>Other Features</i> | None |
| <i>Natural Subsoil</i> | Orange clayey sand and gravel with occasional bedrock seams |
| <i>Finds</i> | None |

Trench 9

| | |
|------------------------------|---|
| <i>Dimensions</i> | 50 m by 2.2 m |
| <i>Total Area</i> | 110 m ² |
| <i>Excavated Orientation</i> | W to E |
| <i>Soil Make-up</i> | Topsoil – dark brown silty clay with occasional small angular stones and rare large stone inclusions with coal flecks throughout – max depth 0.56 m |
| <i>Depth of Excavation</i> | 0.56 m |

| | |
|-----------------------------|-------------------------------|
| <i>Significant Features</i> | None |
| <i>Other Features</i> | None |
| <i>Natural Subsoil</i> | Orange clayey sand and gravel |
| <i>Finds</i> | None |

Trench 10

| | |
|------------------------------|--|
| <i>Dimensions</i> | 50 m by 2.2 m |
| <i>Total Area</i> | 110 m ² |
| <i>Excavated Orientation</i> | W to E |
| <i>Soil Make-up</i> | Topsoil – dark brown silty clay with occasional small angular stones and rare large stone inclusions with coal flecks throughout – max depth 0.4 m; Colluvium from 45 m – reddish brown silty clay with frequent small stone inclusions – max depth 0.55 m |
| <i>Depth of Excavation</i> | 0.95 m |
| <i>Significant Features</i> | None |
| <i>Other Features</i> | None |
| <i>Natural Subsoil</i> | Orange clayey sand and gravel |
| <i>Finds</i> | None |

Trench 11

| | |
|------------------------------|---|
| <i>Dimensions</i> | 50 m by 2.2 m |
| <i>Total Area</i> | 110 m ² |
| <i>Excavated Orientation</i> | W to E |
| <i>Soil Make-up</i> | Topsoil – dark brown silty clay with occasional small angular stones and rare large stone inclusions with coal flecks throughout – max depth 0.43 m; Colluvium from 36 m – reddish brown silty clay with frequent small stone inclusions – max depth 0.55 m |
| <i>Depth of Excavation</i> | 0.9 m |
| <i>Significant Features</i> | None |
| <i>Other Features</i> | None |
| <i>Natural Subsoil</i> | Orange clayey sand and gravel |
| <i>Finds</i> | None |

Trench 12

| | |
|------------------------------|---|
| <i>Dimensions</i> | 50 m by 2.2 m |
| <i>Total Area</i> | 110 m ² |
| <i>Excavated Orientation</i> | W to E |
| <i>Soil Make-up</i> | Topsoil – dark brown silty clay with occasional small angular stones and rare large stone inclusions with coal flecks throughout – max depth 0.43 m; Colluvium from 33 m – reddish brown silty clay with frequent small stone inclusions – max depth 0.55 m |
| <i>Depth of Excavation</i> | 0.9 m |
| <i>Significant Features</i> | None |
| <i>Other Features</i> | None |
| <i>Natural Subsoil</i> | Orange clayey sand and gravel |
| <i>Finds</i> | None |

Trench 13

| | |
|------------------------------|--|
| <i>Dimensions</i> | 40 m by 2.2 m |
| <i>Total Area</i> | 88 m ² |
| <i>Excavated Orientation</i> | W to E |
| <i>Soil Make-up</i> | Topsoil – dark brown silty clay with occasional small angular stones and rare large stone inclusions with coal flecks throughout – max depth 0.42 m; Colluvium from 27 m – reddish brown silty clay with frequent small stone inclusions – max depth 0.6 m |
| <i>Depth of Excavation</i> | 0.9 m |
| <i>Significant Features</i> | None |
| <i>Other Features</i> | None |

Natural Subsoil Compact orange gravel
Finds None

Trench 14

Dimensions 55 m by 2.2 m
Total Area 121 m²
Excavated Orientation ENE to WSW
Soil Make-up Topsoil – dark brown silty clay with occasional small angular stones and rare large stone inclusions with coal flecks throughout – max depth 0.34 m; Colluvium from 45 m – reddish brown silty clay with frequent small stone inclusions – max depth 0.47 m
Depth of Excavation 0.9 m
Significant Features None
Other Features None
Natural Subsoil Reddish brown sandy clay and gravel with bedrock and yellow sand and gravel to 24 m then pink bedrock to 41 m then orange sand and gravel.
Finds None

Trench 15

Dimensions 50 m by 2.2 m
Total Area 110 m²
Excavated Orientation E to W
Soil Make-up Topsoil – dark brown silty clay with occasional small angular stones and rare large stone inclusions with coal flecks throughout – max depth 0.36 m
Depth of Excavation 0.36 m
Significant Features None
Other Features Rubble drain at 0 m to 7 m aligned NE-SW; Rubble drain at 37 m to 40.6 m aligned NW-SE. Modern service track at 15 m aligned N-S, possibly leading from electric pole.
Natural Subsoil Reddish brown sandy clay with occasional stone to 10 m then orange sand and gravel
Finds None

Trench 16

Dimensions 65 m by 2.2 m
Total Area 143 m²
Excavated Orientation SW to NE
Soil Make-up Topsoil – mid greyish brown sandy clay loam with occasional small stone and frequent coal fleck inclusions – max depth 0.51 m
Depth of Excavation 0.51 m
Significant Features None
Other Features Rubble drain at 61.5 m to 64.3 m aligned N-S
Natural Subsoil Very compact orange sand and gravel and bedrock to 24 m then reddish brown sandy clay
Finds None

Trench 17

Dimensions 45 m by 2.2 m
Total Area 99 m²
Excavated Orientation NE to SW
Soil Make-up Topsoil – dark brown silty clay with occasional small angular stones and rare large stone inclusions with coal flecks throughout – max depth 0.45 m
Depth of Excavation 0.45 m
Significant Features None
Other Features Rubble drain at 34.4 m to 41.5 m aligned N-S the E-W
Natural Subsoil Reddish brown sandy clay
Finds None

Trench 18

| | |
|------------------------------|---|
| <i>Dimensions</i> | 55 m by 2.2 m plus 7 m by 2 m extension to SE |
| <i>Total Area</i> | 135 m ² |
| <i>Excavated Orientation</i> | NE to SW |
| <i>Soil Make-up</i> | Topsoil – dark brown silty clay with occasional small angular stones and rare large stone inclusions with coal flecks throughout – max depth 0.39 m |
| <i>Depth of Excavation</i> | 0.39 m |
| <i>Significant Features</i> | Pit [1801]/[1802] and Pit [1803]/[1804] |
| <i>Other Features</i> | None |
| <i>Natural Subsoil</i> | Orange sand and gravel to 2 m then reddish brown sandy clay to 10 m then orange brown sandy clay |
| <i>Finds</i> | None |

Trench 19

| | |
|------------------------------|--|
| <i>Dimensions</i> | 75 m by 2.2 m |
| <i>Total Area</i> | 165 m ² |
| <i>Excavated Orientation</i> | SW to NE |
| <i>Soil Make-up</i> | Topsoil – dark brown silty clay with occasional small angular stones and rare large stone inclusions with coal flecks throughout – max depth 0.35 m ; Colluvium from 45 m – reddish brown silty clay with frequent small stone inclusions – max depth 0.27 m |
| <i>Depth of Excavation</i> | 0.6 m |
| <i>Significant Features</i> | Pit [1901]/[1902] |
| <i>Other Features</i> | None |
| <i>Natural Subsoil</i> | Pink bedrock until 20 m then orange clayey sand and gravel |
| <i>Finds</i> | None |

Trench 20

| | |
|------------------------------|--|
| <i>Dimensions</i> | 65 m by 2.2 m |
| <i>Total Area</i> | 143 m ² |
| <i>Excavated Orientation</i> | NE to SW |
| <i>Soil Make-up</i> | Topsoil – dark brown silty clay with occasional small angular stones and rare large stone inclusions with coal flecks throughout – max depth 0.4 m |
| <i>Depth of Excavation</i> | 0.4 m |
| <i>Significant Features</i> | None |
| <i>Other Features</i> | None |
| <i>Natural Subsoil</i> | Reddish brown sandy clay to 12 m then orange clayey sand and gravel |
| <i>Finds</i> | None |

Trench 21

| | |
|------------------------------|---|
| <i>Dimensions</i> | 45 m by 2.2 m |
| <i>Total Area</i> | 99 m ² |
| <i>Excavated Orientation</i> | N to S |
| <i>Soil Make-up</i> | Topsoil – dark brown silty clay with occasional small angular stones and rare large stone inclusions with coal flecks throughout – max depth 0.45 m |
| <i>Depth of Excavation</i> | 0.45 m |
| <i>Significant Features</i> | None |
| <i>Other Features</i> | None |
| <i>Natural Subsoil</i> | Pink bedrock until 10 m then orange sand and gravel |
| <i>Finds</i> | None |

Trench 22

| | |
|------------------------------|-------------------|
| <i>Dimensions</i> | 45 m by 2.2 m |
| <i>Total Area</i> | 99 m ² |
| <i>Excavated Orientation</i> | NNW to SSE |

| | |
|-----------------------------|--|
| <i>Soil Make-up</i> | Topsoil – dark brown silty clay with occasional small angular stones and rare large stone inclusions with coal flecks throughout – max depth 0.6 m |
| <i>Depth of Excavation</i> | 0.6 m |
| <i>Significant Features</i> | None |
| <i>Other Features</i> | None |
| <i>Natural Subsoil</i> | Orange sand and gravel |
| <i>Finds</i> | None |

Trench 23

| | |
|------------------------------|--|
| <i>Dimensions</i> | 45 m by 2.2 m |
| <i>Total Area</i> | 99 m ² |
| <i>Excavated Orientation</i> | SW to NE |
| <i>Soil Make-up</i> | Topsoil – dark brown silty clay with occasional small angular stones and rare large stone inclusions with coal flecks throughout – max depth 0.4 m |
| <i>Depth of Excavation</i> | 0.4 m |
| <i>Significant Features</i> | None |
| <i>Other Features</i> | Ce tile drain at 6.9 m to 9.1 m; 14.5 m to 16.3 m; 29 m to 31.5 m; 37.1 m to 39.2 m aligned E-W |
| <i>Natural Subsoil</i> | Yellow and orange sandy clay with occasional stone and seams of grey clay |
| <i>Finds</i> | None |

Trench 24

| | |
|------------------------------|---|
| <i>Dimensions</i> | 60 m by 2.2 m |
| <i>Total Area</i> | 132 m ² |
| <i>Excavated Orientation</i> | NE to SW |
| <i>Soil Make-up</i> | Topsoil – dark brown silty clay with occasional small angular stones and rare large stone inclusions with coal flecks throughout – max depth 0.49 m |
| <i>Depth of Excavation</i> | 0.49 m |
| <i>Significant Features</i> | None |
| <i>Other Features</i> | Ce tile drain at 6.7 m to 8.8 m; 14.5 m to 16.5 m; 22.7 m to 25 m; 30.3 m to 32.8 m; 38.3 m to 40.2 m; 46 m to 48.7 m; 53.9 m to 56.1 m aligned E-W |
| <i>Natural Subsoil</i> | Reddish brown sandy clay to 8 m then orange sandy clay |
| <i>Finds</i> | None |

Trench 25

| | |
|------------------------------|---|
| <i>Dimensions</i> | 55 m by 2.2 m |
| <i>Total Area</i> | 121 m ² |
| <i>Excavated Orientation</i> | NNE to SSW |
| <i>Soil Make-up</i> | Topsoil – dark brown silty clay with occasional small angular stones and rare large stone inclusions with coal flecks throughout – max depth 0.42 m |
| <i>Depth of Excavation</i> | 0.42 m |
| <i>Significant Features</i> | None |
| <i>Other Features</i> | Ce tile drain at 4.3 m; 10.2 m; 16 m; 21.5 m aligned E-W |
| <i>Natural Subsoil</i> | Yellow and orange sandy clay and occasional boulders |
| <i>Finds</i> | None |

Trench 26

| | |
|------------------------------|---|
| <i>Dimensions</i> | 45 m by 2.2 m |
| <i>Total Area</i> | 99 m ² |
| <i>Excavated Orientation</i> | WSW to ENE |
| <i>Soil Make-up</i> | Topsoil – dark brown silty clay with occasional small angular stones and rare large stone inclusions with coal flecks throughout – max depth 0.42 m |
| <i>Depth of Excavation</i> | 0.42 m |
| <i>Significant Features</i> | None |

| | |
|------------------------|---|
| <i>Other Features</i> | Ce tile drain at 1.7 m to 5.8 m; 14 m to 18.3 m; 26.8 m to 30 m aligned E-W |
| <i>Natural Subsoil</i> | Yellow and orange sandy clay to 6 m then reddish brown sandy clay |
| <i>Finds</i> | None |

Trench 27

| | |
|------------------------------|---|
| <i>Dimensions</i> | 45 m by 2.2 m |
| <i>Total Area</i> | 99 m ² |
| <i>Excavated Orientation</i> | W to E |
| <i>Soil Make-up</i> | Topsoil – dark brown silty clay with occasional small angular stones and rare large stone inclusions with coal flecks throughout – max depth 0.35 m |
| <i>Depth of Excavation</i> | 0.35 m |
| <i>Significant Features</i> | None |
| <i>Other Features</i> | Ce tile drain at 5.9 m to 14.5 m aligned WNW-ESE |
| <i>Natural Subsoil</i> | Orange sandy clay and occasional boulders to 19 m then pink clay and bedrock to 36 m then orange sandy clay and gravel |
| <i>Finds</i> | None |

Trench 28

| | |
|------------------------------|---|
| <i>Dimensions</i> | 60 m by 2.2 m |
| <i>Total Area</i> | 132 m ² |
| <i>Excavated Orientation</i> | E to W |
| <i>Soil Make-up</i> | Topsoil – dark brown silty clay with occasional small angular stones and rare large stone inclusions with coal flecks throughout – max depth 0.36 m |
| <i>Depth of Excavation</i> | 0.36 m |
| <i>Significant Features</i> | None |
| <i>Other Features</i> | Ce tile drain at 0 m to 5.4 m aligned ESE-WNW |
| <i>Natural Subsoil</i> | Pink bedrock to 11 m then orange clayey gravel to 24 m then reddish pink and orange sandy clay |
| <i>Finds</i> | None |

Trench 29

| | |
|------------------------------|---|
| <i>Dimensions</i> | 60 m by 2.2 m |
| <i>Total Area</i> | 132 m ² |
| <i>Excavated Orientation</i> | W to E |
| <i>Soil Make-up</i> | Topsoil – dark brown silty clay with occasional small angular stones and rare large stone inclusions with coal flecks throughout – max depth 0.36 m |
| <i>Depth of Excavation</i> | 0.36 m |
| <i>Significant Features</i> | None |
| <i>Other Features</i> | None |
| <i>Natural Subsoil</i> | Pink and orange sandy clay and boulders to 26 m then pink bedrock |
| <i>Finds</i> | None |

Trench 30

| | |
|------------------------------|---|
| <i>Dimensions</i> | 80 m by 2.2 m |
| <i>Total Area</i> | 176 m ² |
| <i>Excavated Orientation</i> | E to W |
| <i>Soil Make-up</i> | Topsoil – dark brown silty clay with occasional small angular stones and rare large stone inclusions with coal flecks throughout – max depth 0.38 m ; Colluvium from 63 m – reddish brown silty clay with frequent small stone inclusions – max depth 0.5 m |
| <i>Depth of Excavation</i> | 0.85 m |
| <i>Significant Features</i> | None |
| <i>Other Features</i> | None |
| <i>Natural Subsoil</i> | Pink bedrock to 19 m then pink and orange sandy clay to 28 m then orange sandy clay to 65 m then reddish brown sandy clay |

Finds

None

APPENDIX 2: Context Register

| Context No. | Area | Description and Interpretation |
|-------------|------|--|
| 1801 | T18 | Oval shaped cut with moderate to steep, shallow sides and a flat base. Filled by deposit [1802]. Measures 2.5 m by 0.9 m by 0.06 m. Probable post medieval pit |
| 1802 | T18 | Mid brown sandy clay with abundant charcoal lumps throughout. Fill also seen at base of topsoil. Fill of [1801] |
| 1803 | T18 | Large sub-circular pit with steep sides and a concave base immediately NE of pit [1801]. Measures 3.1 m by 2.4 m by 0.4 m Probable post medieval pit |
| 1804 | T18 | Dark grey silty clay with frequent stone inclusions from medium to very large. Measures 3.1 m by 2.4 m by 0.4 m Fill of pit [1803] |
| 1901 | T19 | Oval/sub circular pit with steep sides and flat base measuring 2.11 m by 1.1 m by 0.23 m. Filled by deposit [1902]. Probable post medieval pit |
| 1902 | T19 | Dark grey gravelly silty sand measuring 2.11 m (+) by 1.1 m by 0.23 m. Fill of pit [1901] |

APPENDIX 3: Photographic Record

Digital Photographs

| Frame | Description | From | Date |
|-------|---------------------------------|------|----------|
| 1-6 | General view of field (west) | Var | 11/11/14 |
| 7 | Septic tank next to house | W | 11/11/14 |
| 8 | Line of gas main | E | 11/11/14 |
| 9-10 | Overhead cables with bunting | Var | 11/11/14 |
| 11 | Disturbed area at back of farm | N | 11/11/14 |
| 12 | NE corner of site | SW | 11/11/14 |
| 13 | Demolished farm buildings | N | 11/11/14 |
| 14-15 | General view of field (east) | Var | 11/11/14 |
| 16 | Marsh area next to ditch | S | 11/11/14 |
| 17 | Livestock in fields to far east | W | 11/11/14 |
| 18 | Post ex T1 | NNE | 11/11/14 |
| 19 | Post ex T2 | N | 11/11/14 |
| 20 | Post ex T3 | SW | 11/11/14 |
| 21 | Post ex T4 | SW | 11/11/14 |
| 22 | Post ex T5 | NW | 11/11/14 |
| 23 | Post ex T6 | NE | 11/11/14 |
| 24 | Ditch in T1 | SW | 11/11/14 |
| 25 | SW-facing section of T1 ditch | SW | 11/11/14 |
| 26 | Post ex T7 | NE | 11/11/14 |
| 27 | Post ex T8 | NE | 11/11/14 |
| 28 | Post ex T9 | E | 11/11/14 |

| | | | |
|-------|------------------------------------|-----|----------|
| 29 | Post ex T10 | E | 11/11/14 |
| 30 | Post ex T11 | E | 11/11/14 |
| 31 | Post ex T12 | E | 11/11/14 |
| 32 | Post ex T13 | E | 11/11/14 |
| 33 | Post ex T14 | WSW | 12/11/14 |
| 34-35 | View of backfilled trenches (west) | Var | 12/11/14 |
| 36 | Post ex T15 | W | 12/11/14 |
| 37 | Post ex T16 | NE | 12/11/14 |
| 38 | Post ex T17 | SW | 12/11/14 |
| 39 | Post ex T18 | NE | 12/11/14 |
| 40 | Post ex T19 | NE | 12/11/14 |
| 41 | General view of pit [1803] | N | 12/11/14 |
| 42 | General view of pit [1803] | W | 12/11/14 |
| 43 | General view of pit [1801] | W | 12/11/14 |
| 44 | View of pits [1801] and [1803] | W | 12/11/14 |
| 45 | NW-facing section of pit [1803] | NW | 12/11/14 |
| 46 | NW-facing section of pit [1801] | NW | 12/11/14 |
| 47 | NE facing section of pit [1803] | NE | 12/11/14 |
| 48 | Post ex T21 | S | 13/11/14 |
| 49 | Post ex T22 | SSE | 13/11/14 |
| 50-52 | View of backfilled trenches (east) | Var | 13/11/14 |
| 53 | Post ex T23 | NE | 13/11/14 |
| 54 | Post ex T24 | SW | 13/11/14 |
| 55 | Post ex T25 | SSW | 13/11/14 |
| 56 | SE facing section of pit [1901] | SE | 13/11/14 |
| 57 | General view of pit [1901] | NE | 13/11/14 |
| 58 | Post ex T26 | ENE | 13/11/14 |
| 59 | Post ex T27 | E | 13/11/14 |
| 60 | Post ex T28 | W | 13/11/14 |
| 61 | Post ex T30 | W | 13/11/14 |

APPENDIX 4: Drawing Register

| Drawing No. | Area | Details | Scale |
|-------------|------|--|-------|
| 1 | T18 | Plan of Trench 18 | 1:50 |
| 2 | T18 | NW and NE facing section of pit [1803] | 1:20 |
| 3 | T18 | NW facing section of pit [1801] | 1:10 |
| 4 | T19 | Plan of Trench 19 | 1:50 |
| 5 | T19 | SE facing section of pit [1901] | 1:10 |

APPENDIX 5: Samples Register

| Context No. | Trench | Quantity (litres) |
|-------------|--------|-------------------|
| [1802] | T18 | 5 |
| [1804] | T18 | 5 |
| [1902] | T19 | 5 |

APPENDIX 6: 'Discovery and Excavation in Scotland' Report

| | |
|---|---|
| LOCAL AUTHORITY: | Perth and Kinross Council |
| PROJECT TITLE/SITE NAME | Tomaknock, Crieff |
| PROJECT CODE: | AOC 22919 |
| PARISH: | Crieff |
| NAME OF CONTRIBUTOR: | Kevin Paton |
| NAME OF ORGANISATION: | AOC Archaeology Group |
| TYPE(S) OF PROJECT: | Archaeological Evaluation |
| NMRS NO(S) | None |
| SITE/MONUMENT TYPE(S): | N/A |
| SIGNIFICANT FINDS: | N/A |
| NGR (2 letters, 6 figures) | NN 8770 2170 |
| START DATE (this season) | 11 th November 2014 |
| END DATE (this season) | 14 th November 2014 |
| PREVIOUS WORK (incl. DES ref.) | None |
| MAIN (NARRATIVE) DESCRIPTION: (May include information from other fields) | <p>An archaeological evaluation was undertaken as part of pre-planning works for a proposed development at Tomaknock Farm, Crieff, Perth and Kinross.</p> <p>The evaluation required a 5% trenching sample of the available development area. A total of 30 trenches of varying lengths and alignments were excavated.</p> <p>Throughout the majority of the site no significant archaeological features or artefacts were encountered. Three potentially related pit features were encountered on the slope to the NE of the farmstead. Two of the pits were approximately 25 m from a post medieval quarry road and may relate to the use of the area during this period. The third was further down the slope in a partially waterlogged part of the site.</p> |
| PROPOSED FUTURE WORK: | None |
| CAPTION(S) FOR ILLUSTRS: | --- |
| SPONSOR OR FUNDING BODY: | G-S Brown Construction Ltd. |
| ADDRESS OF MAIN CONTRIBUTOR: | Edgefield Road Industrial Estate, Loanhead, Midlothian, EH20 9SY |
| EMAIL ADDRESS: | admin@aocarchaeology.com |
| ARCHIVE LOCATION (intended/deposited) | Archive to be deposited in NMRS |



AOC Archaeology Group, Edgefield Industrial Estate, Edgefield Road, Loanhead EH20 9SY
tel: 0131 440 3593 | fax: 0131 440 3422 | e-mail: admin@aocarchaeology.com

www.aocarchaeology.com